

WELL LOG BUREAU - KANSAS GEOLOGICAL SOCIETY
508 East Murdock Wichita, Kansas

Company - LEE PHILLIPS OIL COMPANY
Farm - Standinger " B " No. 3

SEC. 6 T. 16 R. 12W
SW SE NE

County. Barton

KANSAS

Total Depth. 3307

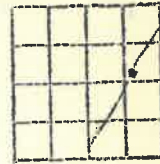
Comm. 5-21-51

Comp. 6-1-51

Shot or Treated.

Contractor. Anschutz Drilling Co., Inc.

Issued. 7-14-51



CASING:

8 5/8" 446' cem. w/225 sx
5 1/2" 3302' cem. w/75 sx

Elevation. 1859

Production. dry

Figures Indicate Bottom of Formations.

shale & shells	436
shale	460
shale & shells	480
redbed	800
Anhydrite	835
shale & shells	1270
salt	1480
shale & shells	1515
lime	1605
lime & shale	1975
broken lime	2000
shale & lime	2330
shale & shells	2665
shale & lime	2730
lime	2813
lime & shale	2895
lime	2985
lime & shale	3070
lime	3307

Total Depth
RTD 3302

Tops:	
Arbuckle	3300
RTD	3302

Scout Tops:	
Topeka	2672
Heebner	2943
Brown lime	3030
Lansing	3040
Arbuckle chert	3298
Arbuckle dolomite	3300
Total depth	3307