

TRILOBITE TESTING L.L.C.

OPERATOR : L.D. Davis. DATE 4/07/95  
 WELL NAME: Mildred Bentley KB 2606.00 ft TICKET NO: 8289 DST #1  
 LOCATION : 12-16S-28W GR 2601.00 ft FORMATION: Myric sta./Pawnee  
 INTERVAL : 4265.00 To 4340.00 ft TD 4340.00 ft TEST TYPE: CONVENTIONAL

RECORDER DATA

Mins		Field	1	2	3	4	TIME DATA-----
PF 30	Rec.	24174	24174				PF Fr. 30 to hr
SI 30	Range(Psi )	3050.0	3050.0	0.0	0.0	0.0	IS Fr. 30 to hr
SF 30	Clock(hrs)	12hr.					SF Fr. 30 to hr
FS 30	Depth(ft )	4334.0	4334.0	0.0	0.0	0.0	FS Fr. 30 to hr

	Field	1	2	3	4	
A. Init Hydro	2175.0	2155.0	0.0	0.0	0.0	T STARTED 2239 hr
B. First Flow	52.0	48.0	0.0	0.0	0.0	T ON BOTM 0003 hr
B1. Final Flow	52.0	48.0	0.0	0.0	0.0	T OPEN 0005 hr
C. In Shut-in	67.0	59.0	0.0	0.0	0.0	T PULLED 0205 hr
D. Init Flow	52.0	48.0	0.0	0.0	0.0	T OUT 0310 hr
E. Final Flow	52.0	48.0	0.0	0.0	0.0	
F. Fl Shut-in	52.0	48.0	0.0	0.0	0.0	TOOL DATA-----
G. Final Hydro	2151.0	2140.0	0.0	0.0	0.0	Tool Wt. 1800.00 lbs
Inside/Outside	0	0				Wt Set On Packer 20000.00 lbs

RECOVERY

Tot Fluid	5.00 ft of	0.00 ft in DC and	5.00 ft in DP	Unseated Str Wt	50.00 lbs
5.00	ft of Drlg. mud			Bot Choke	7.50 in
0.00	ft of			Hole Size	7.88 in
0.00	ft of			D Col. ID	2.25 in
0.00	ft of			D. Pipe ID	3.80 in
0.00	ft of			D.C. Length	0.00 ft
0.00	ft of			D.P. Length	4275.00 ft
0.00	ft of				
SALINITY	0.00 P.P.M.	A.P.I. Gravity	0.00		

BLOW DESCRIPTION

INITIAL  
Weak blow

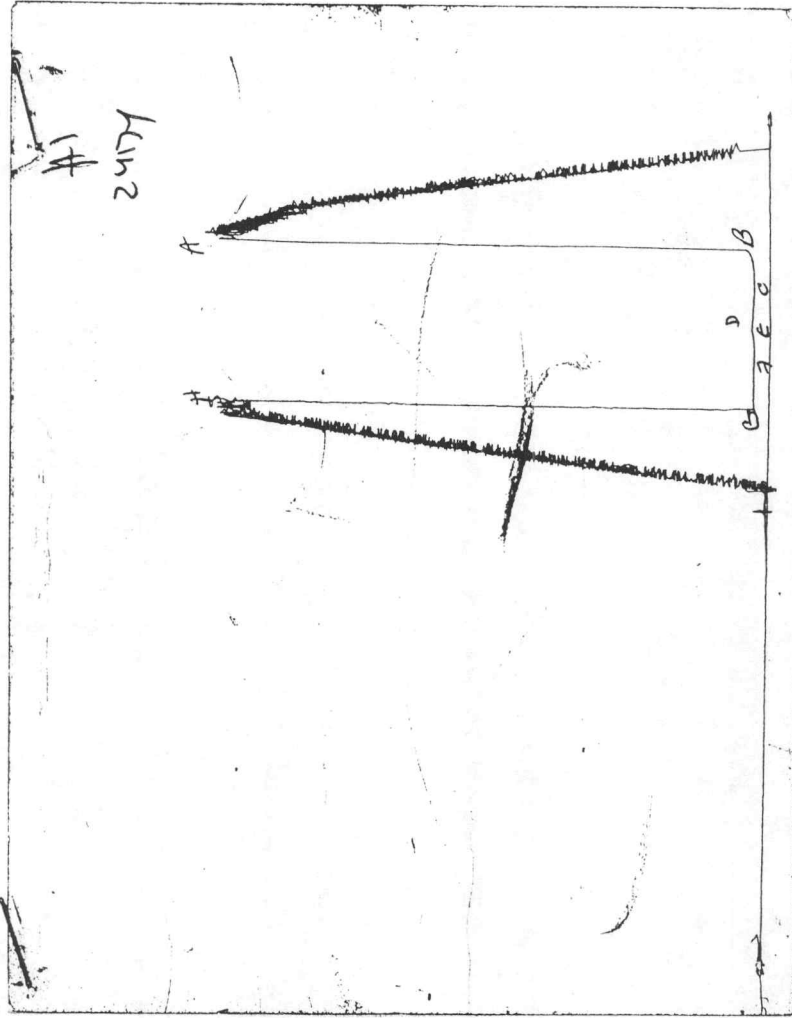
FINAL  
No blow

SAMPLES:  
SENT TO:

MUD DATA-----  
 Mud Type chem  
 Weight 9.60 lb/  
 Vis. 43.00 S/I  
 W.L. 12.40 in  
 F.C. 0.00 in  
 Mud Drop Y 10.0 ft  
 Amt. of fill 1.00 ft  
 Btm. H. Temp. 109.00 F  
 Hole Condition Good  
 % Porosity 0.00  
 Packer Size 6.75 in  
 No. of Packers 2  
 Cushion Amt. 0.00  
 Cushion Type  
 Reversed Out N  
 Tool Chased N  
 Tester Paul Simpson  
 Co. Rep. Scott Oatsdean  
 Contr. L.D. Drilling.  
 Rig # 1  
 Unit #  
 Pump T.

Test Successful: Y

CHART PAGE



This is an actual photograph of an AK1 recorder chart

\*\*\* TOOL DIAGRAM \*\*\* CONVENTIONAL

WELL NAME: Mildred Bentley

LOCATION : 12-16S-28W

TICKET No. 8289 D.S.T. No. 1 DATE 4/07/95

TOTAL TOOL TO BOTTOM OF TOP PACKERS ..... 21

INTERVAL TOOL .....

BOTTOM PACKERS AND ANCHOR ..... 12

TOTAL TOOL ..... 33

DRILL COLLAR ANCHOR IN INTERVAL .....

D.C. ANCHOR STND.Stands Single Total

D.P. ANCHOR STND.Stands 1 Single Total 63

TOTAL ASSEMBLY ..... 96 ft.

D.C. ABOVE TOOLS.Stands Single Total

D.P. ABOVE TOOLS.Stands68 Single Total 4275 ft.

TOTAL DRILL COLLARS DRILL PIPE & TOOLS .. 4371 ft.

TOTAL DEPTH ..... 4340 ft.

TOTAL DRILL PIPE ABOVE K.B. .... 31 ft.

REMARKS:

	P.O. SUB	
	C.O. SUB	4244
	S.I. TOOL	4249
	HMV Hyd. Tool	4254
	JARS	
	SAFETY JOINT	4256
	PACKER top packer	4260
	PACKER bottom packer	4265
	DEPTH 4265	
	STUBB	4266
	ANCHOR 3'perf	4269
	stand & subs	4334
	3' perf	4337
	T.C.	
	DEPTH	
	BULLNOSE	
	T.D.	4340

TRILOBITE TESTING L.L.C.

OPERATOR : L.D. DAVIS DATE 04/07/95  
 WELL NAME: MILDRED BENTLEY #1 KB 0.00 ft TICKET NO: 8290 DST #2  
 LOCATION : 12-16S-28W GR 0.00 ft FORMATION: FORT SCOTT  
 INTERVAL : 0.00 To 0.00 ft TD 0.00 ft TEST TYPE: CONVENTIONAL

RECORDER DATA

Mins	Field	1	2	3	4	TIME DATA-----
PF 30 Rec.	24174	24174				PF Fr. 30 to hr
SI 30 Range(Psi )	3050.0	3050.0	0.0	0.0	0.0	IS Fr. 30 to hr
SF 30 Clock(hrs)	23839	23839				SF Fr. 30 to hr
FS 30 Depth(ft )	4384.0	4384.0	0.0	0.0	0.0	FS Fr. 30 to hr

	Field	1	2	3	4	
A. Init Hydro	2214.0	2216.0	0.0	0.0	0.0	T STARTED hr
B. First Flow	37.0	42.0	0.0	0.0	0.0	T ON BOTM hr
B1. Final Flow	37.0	42.0	0.0	0.0	0.0	T OPEN 13:4 hr
C. In Shut-in	44.0	49.0	0.0	0.0	0.0	T PULLED 15:4 hr
D. Init Flow	37.0	42.0	0.0	0.0	0.0	T OUT hr
E. Final Flow	37.0	42.0	0.0	0.0	0.0	
F. Fl Shut-in	37.0	42.0	0.0	0.0	0.0	TOOL DATA-----
G. Final Hydro	2182.0	2180.0	0.0	0.0	0.0	Tool Wt. 0.00 lbs
Inside/Outside	0	0				Wt Set On Packer 0.00 lbs
						Wt Pulled Loose 0.00 lbs
						Initial Str Wt 0.00 lbs
						Unseated Str Wt 0.00 lbs
						Bot Choke 7.50 in
						Hole Size 7.88 in
						D Col. ID 0.00 in
						D. Pipe ID 3.80 in
						D.C. Length 0.00 ft
						D.P. Length 0.00 ft

RECOVERY

Tot Fluid 2.00 ft of 0.00 ft in DC and 2.00 ft in DP  
 2.00 ft of MUD  
 0.00 ft of  
 0.00 ft of  
 0.00 ft of  
 0.00 ft of  
 0.00 ft of  
 0.00 ft of  
 0.00 ft of

SALINITY 0.00 P.P.M. A.P.I. Gravity 0.00

BLOW DESCRIPTION

INITIAL BLOW: WEAK SURFACE BLOW, DIED  
 IN 6 MIN.

FINAL BLOW: NO BLOW

MUD DATA-----

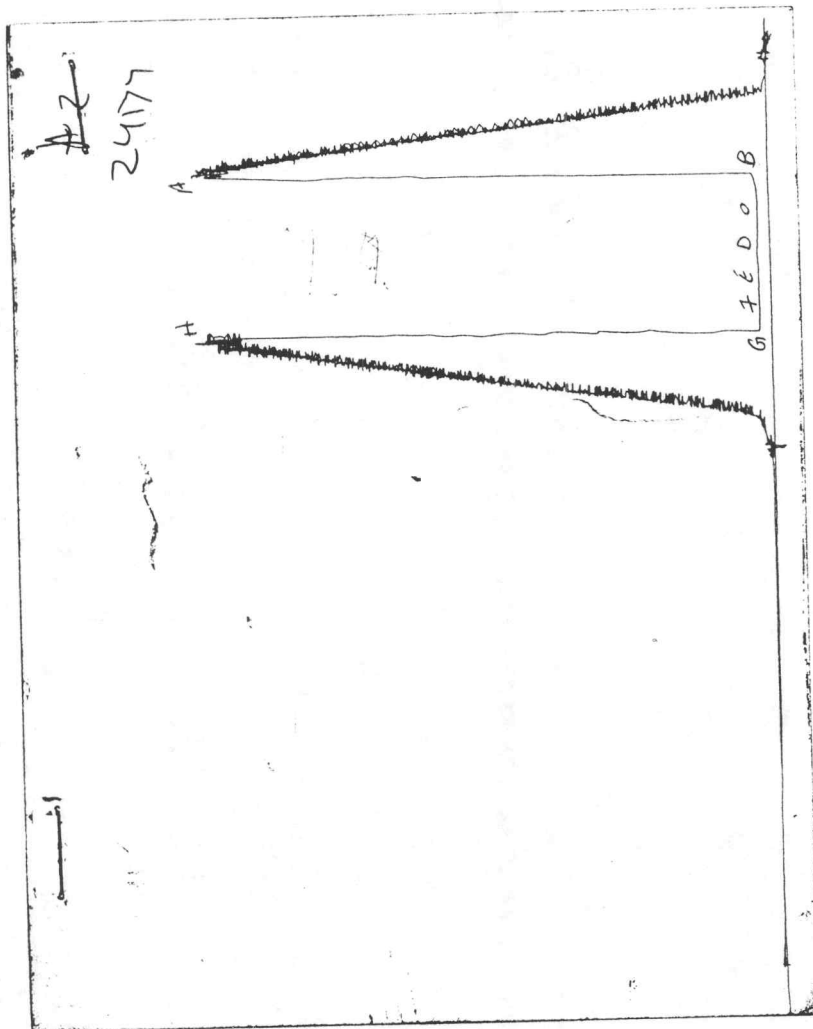
Mud Type	CHEMICAL
Weight	9.10 lb/
Vis.	40.00 S/I
W.L.	9.00 in
F.C.	0.00 in
Mud Drop	

Amt. of fill	0.00 ft
Btm. H. Temp.	109.00 F
Hole Condition	
% Porosity	0.00
Packer Size	6.75 in
No. of Packers	2
Cushion Amt.	0.00
Cushion Type	
Reversed Out	
Tool Chased	
Tester	PAUL SIMPSON
Co. Rep.	SCOTT OATSDEAN
Contr.	LD DRILLING
Rig #	1
Unit #	
Pump T.	

SAMPLES:  
 SENT TO:

Test Successful: Y

CHART PAGE



This is an actual photograph of an AK1 recorder chart