

Computer Inventoried

15-009-24667

WELL NAME:
COMPANY:
LOCATION:

DATE:

Hoffman "A" #15
John O. Farmer, Inc.
7-16s-13w
Barton co Kansas
3/24/00

ORIGINAL

TRILOBITE TESTING L.L.C.

ORIGINAL

OPERATOR : John O. Farmer, Inc.

DATE 3-19-00

WELL NAME: Hoffman "A" #15

KB 1921.00 ft

TICKET NO: 12934 DST #1

LOCATION : 7-16s-13w Barton co KS

GR 1913.00 ft

FORMATION: Plattsmouth

INTERVAL : 2945.00 To 2965.00 ft

TD 2965.00 ft

TEST TYPE: CONVETIONAL

RECORDER DATA

Mins		Field	1	2	3	4	TIME DATA-----
PF 15	Rec.	11085	11085				PF Fr. 1545 to 1600 hr
SI 30	Range(Psi)	4300.0	4300.0	0.0	0.0	0.0	IS Fr. 1600 to 1630 hr
SF 15	Clock(hrs)	12	12				SF Fr. 1630 to 1645 hr
FS 15	Depth(ft)	2956.0	2956.0	0.0	0.0	0.0	FS Fr. 1645 to 1700 hr

	Field	1	2	3	4	
A. Init Hydro	1419.0	1429.0	0.0	0.0	0.0	T STARTED 1430 hr
B. First Flow	66.0	89.0	0.0	0.0	0.0	T ON BOTM 1540 hr
B1. Final Flow	66.0	73.0	0.0	0.0	0.0	T OPEN 1545 hr
C. In Shut-in	77.0	78.0	0.0	0.0	0.0	T PULLED 1700 hr
D. Init Flow	66.0	70.0	0.0	0.0	0.0	T OUT 1825 hr
E. Final Flow	66.0	56.0	0.0	0.0	0.0	
F. Fl Shut-in	66.0	58.0	0.0	0.0	0.0	
G. Final Hydro	1397.0	1352.0	0.0	0.0	0.0	
Inside/Outside	I	I				

TOOL DATA-----

Tool Wt.	2000.00 lbs
Wt Set On Packer	20000.00 lbs
Wt Pulled Loose	48000.00 lbs
Initial Str Wt	40000.00 lbs
Unseated Str Wt	40000.00 lbs
Bot Choke	0.75 in
Hole Size	7.78 in
D Col. ID	2.25 in
D. Pipe ID	3.80 in
D.C. Length	30.00 ft
D.P. Length	2895.00 ft

RECOVERY

Tot Fluid 20.00 ft of 20.00 ft in DC and 0.00 ft in DP
 20.00 ft of Mud w/ show of oil
 0.00 ft of 100% mud
 0.00 ft of
 0.00 ft of
 0.00 ft of
 0.00 ft of
 0.00 ft of
 0.00 ft of

SALINITY 0.00 P.P.M. A.P.I. Gravity 0.00

MUD DATA-----

Mud Type	Chemical
Weight	9.20 lb/cf
Vis.	40.00 S/L
W.L.	11.20 in3
F.C.	0.00 in
Mud Drop	

BLOW DESCRIPTION

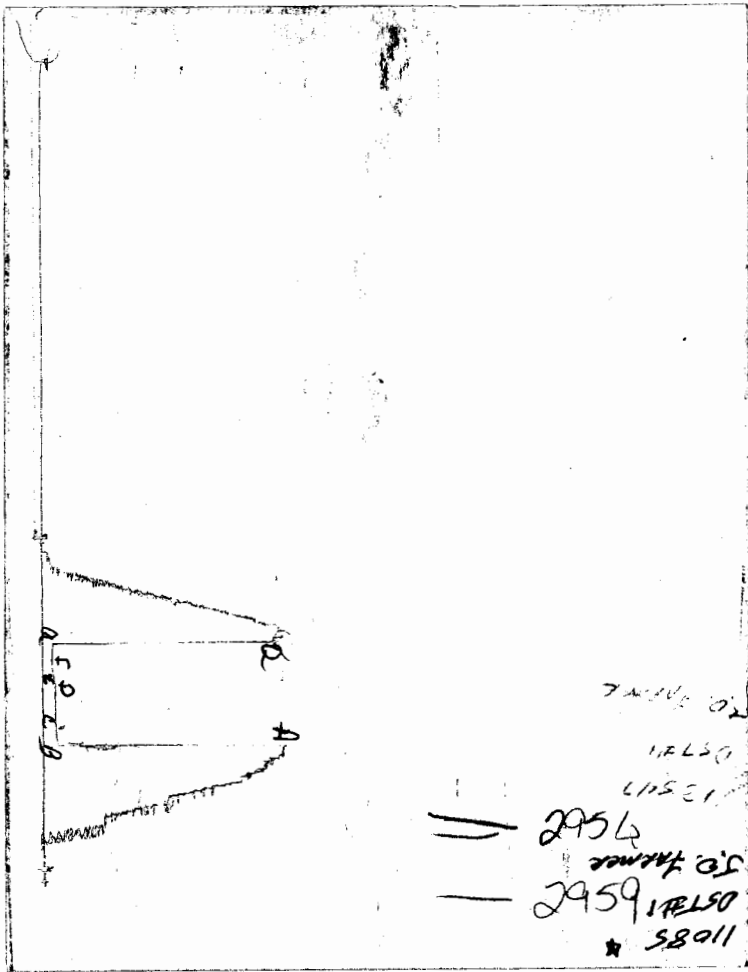
Initial Flow:
 Weak surface blow throughout
 Final Flow:
 No blow.

Amt. of fill	0.00 ft
Btm. H. Temp.	1000.00 F
Hole Condition	
% Porosity	0.00
Packer Size	6.75 in
No. of Packers	2
Cushion Amt.	0.00
Cushion Type	
Reversed Out	
Tool Chased	
Tester	Ray Schwager
Co. Rep.	Robert Stolzle
Contr.	Discovery
Rig #	2
Unit #	
Pump T.	

SAMPLES:
 SENT TO:

Test Successful: Y

CHART PAGE



This is a photocopy of the actual AK-1 recorder chart

TRILOBITE TESTING L.L.C.

P.O. Box 362 • Hays, Kansas 67601

Nº 12934

Test Ticket

Well Name & No.	<u>Hoffman "A" #15</u>	Test No.	<u>1</u>	Date	<u>3-19-00</u>
Company	<u>John O. Farmer, Inc</u>	Zone Tested	<u>PLATTSMOUTH</u>		
Address	<u>P.O. Box 352 Russell, Ks 67665</u>	Elevation	<u>1921</u>	KB	<u>1913</u> GL
Co. Rep / Geo.	<u>Bob</u>	Cont.	<u>DISCOVERY rig 2</u>	Est. Ft. of Pay	<u>-</u> Por. <u>-</u> %
Location: Sec.	<u>7</u>	Twp.	<u>16^s</u>	Rge.	<u>13^w</u>
			Co.	<u>BARTON</u>	State <u>Ks</u>
No. of Copies	<u>Reg</u>	Distribution Sheet (Y, N)	<u>N</u>	Turnkey (Y, N)	<u>N</u>
				Evaluation (Y, N)	<u>N</u>

Interval Tested	<u>2945-2965</u>	Initial Str Wt./Lbs.	<u>40000</u>	Unseated Str Wt./Lbs.	<u>40000</u>
Anchor Length	<u>20</u>	Wt. Set Lbs.	<u>20000</u>	Wt. Pulled Loose/Lbs.	<u>48000</u>
Top Packer Depth	<u>2940</u>	Tool Weight	<u>2000</u>		
Bottom Packer Depth	<u>2945</u>	Hole Size — 7 7/8"	<u>yes</u>	Rubber Size — 6 3/4"	<u>yes</u>
Total Depth	<u>2965</u>	Wt. Pipe Run	<u>-</u>	Drill Collar Run	<u>30</u>
Mud Wt.	<u>9.2</u> LCM <u>-</u> Vis. <u>40</u> WL <u>11.2</u>	Drill Pipe Size	<u>4 1/2 XH</u>	Ft. Run	<u>2895</u>
Blow Description	<u>IFP - WEAK SURFACE BLOW THROUGHOUT</u> <u>FFP - NO BLOW</u>				

Recovery — Total Feet	<u>20</u>	GIP	<u>-</u>	Ft. in DC	<u>20</u>	Ft. in DP	<u>-</u>
Rec.	<u>20</u>	Feet Of	<u>Mud</u>	%gas	%oil	%water	%mud
Rec.		Feet Of	<u>w/show of oil</u>	%gas	%oil	%water	%mud
Rec.		Feet Of		%gas	%oil	%water	%mud
Rec.		Feet Of		%gas	%oil	%water	%mud
Rec.		Feet Of		%gas	%oil	%water	%mud
BHT	<u>100</u>	°F Gravity	<u>-</u>	°API D@	<u>-</u>	°F Corrected Gravity	<u>-</u>
RW	<u>-</u>	@	<u>-</u>	°F Chlorides	<u>-</u>	ppm Recovery	Chlorides <u>7200</u> ppm System

	AK-1	Alpine		
(A) Initial Hydrostatic Mud	<u>1419</u>	PSI Recorder No.	<u>11085</u>	T-On Location <u>1400</u>
(B) First Initial Flow Pressure	<u>66</u>	PSI (depth)	<u>4300 2956</u>	T-Started <u>1430</u>
(C) First Final Flow Pressure	<u>66</u>	PSI Recorder No.	<u>13547</u>	T-Open <u>1545</u>
(D) Initial Shut-In Pressure	<u>77</u>	PSI (depth)	<u>4225 2959</u>	T-Pulled <u>1800</u>
(E) Second Initial Flow Pressure	<u>66</u>	PSI Recorder No.	<u>-</u>	T-Out <u>1825</u>
(F) Second Final Flow Pressure	<u>66</u>	PSI (depth)	<u>-</u>	T-Off Location <u>1835</u>
(G) Final Shut-in Pressure	<u>66</u>	PSI Initial Opening	<u>15</u>	Test <input checked="" type="checkbox"/>
(Q) Final Hydrostatic Mud	<u>1397</u>	PSI Initial Shut-in	<u>30</u>	Jars

Final Flow	<u>30 15</u>	Safety Joint	<input checked="" type="checkbox"/>
Final Shut-in	<u>30 15</u>	Straddle	

TRILOBITE TESTING L.L.C. SHALL NOT BE LIABLE FOR DAMAGE OF ANY KIND OF THE PROPERTY OR PERSONNEL OF THE ONE FOR WHOM A TEST IS MADE, OR FOR ANY LOSS SUFFERED OR SUSTAINED, DIRECTLY OR INDIRECTLY, THROUGH THE USE OF ITS EQUIPMENT, OR ITS STATEMENTS OR OPINION CONCERNING THE RESULTS OF ANY TEST. TOOLS LOST OR DAMAGED IN THE HOLE SHALL BE PAID FOR AT COST BY THE PARTY FOR WHOM THE TEST IS MADE.

Approved By Roland Stoffle
 Our Representative Ray Schwager Thank you

Circ. Sub _____
 Sampler _____
 Extra Packer _____
 Elec. Rec. _____
 Mileage _____
 Other _____
 TOTAL PRICE \$

TRILOBITE TESTING L.L.C.

OPERATOR : John O. Farmer, Inc.

DATE 3-20-00

WELL NAME: Hoffman "A" #15

KB 1921.00 ft

TICKET NO: 12935 DST #2

LOCATION : 7-16s-13w Barton co KS

GR 1913.00 ft

FORMATION: Lansing "B"

INTERVAL : 3081.00 To 3096.00 ft

TD 3096.00 ft

TEST TYPE: CONVENTIONAL

RECORDER DATA

Mins	Field	1	2	3	4	TIME DATA-----
PF 15 Rec.	11085					PF Fr. 1115 to 1130 hr
SI 30 Range(Psi)	4300.0	0.0	0.0	0.0	0.0	IS Fr. 1130 to 1200 hr
SF 30 Clock(hrs)	12	mis-	run			SF Fr. 1200 to 1230 hr
FS 60 Depth(ft)	3087.0	0.0	0.0	0.0	0.0	FS Fr. 1230 to 1330 hr

	Field	1	2	3	4	
A. Init Hydro	0.0	0.0	0.0	0.0	0.0	T STARTED 1015 hr
B. First Flow	0.0	0.0	0.0	0.0	0.0	T ON BOTM 1110 hr
B1. Final Flow	0.0	0.0	0.0	0.0	0.0	T OPEN 1115 hr
C. In Shut-in	0.0	0.0	0.0	0.0	0.0	T PULLED 1330 hr
D. Init Flow	0.0	0.0	0.0	0.0	0.0	T OUT 1500 hr
E. Final Flow	0.0	0.0	0.0	0.0	0.0	
F. Fl Shut-in	0.0	0.0	0.0	0.0	0.0	
G. Final Hydro	0.0	0.0	0.0	0.0	0.0	

RECOVERY

Tot Fluid 45.00 ft of 30.00 ft in DC and 15.00 ft in DP
 45.00 ft of Mud
 0.00 ft of
 0.00 ft of
 0.00 ft of
 0.00 ft of
 0.00 ft of
 0.00 ft of
 0.00 ft of

SALINITY 0.00 P.P.M. A.P.I. Gravity 0.00

BLOW DESCRIPTION

Initial Flow:
 Weak blow throughout 3" to 1 1/2" blow.
 Final Flow:
 No blow.
 Pool slid approximately 6 feet to bottom misrun

SAMPLES:

SENT TO:

TOOL DATA-----

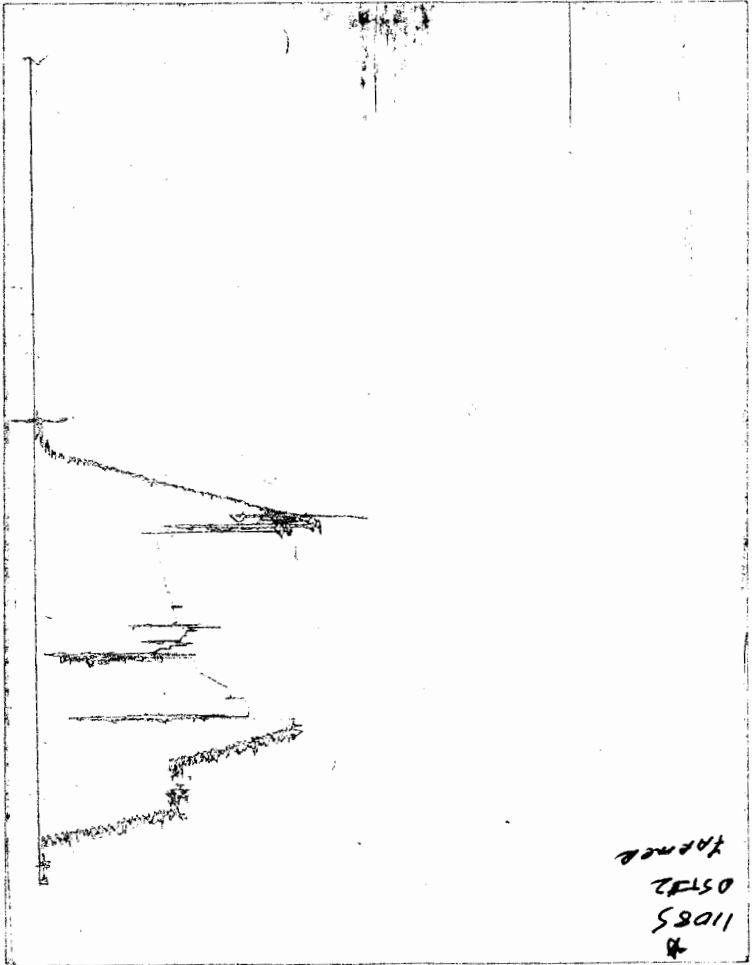
Tool Wt.	2000.00 lbs
Wt Set On Packer	20000.00 lbs
Wt Pulled Loose	80000.00 lbs
Initial Str Wt	40000.00 lbs
Unseated Str Wt	40000.00 lbs
Bot Choke	0.75 in
Hole Size	7.78 in
D Col. ID	2.25 in
D. Pipe ID	3.80 in
D.C. Length	30.00 ft
D.P. Length	3031.00 ft

MUD DATA-----

Mud Type	Chemical
Weight	9.10 lb/cf
Vis.	39.00 S/L
W.L.	10.00 in3
F.C.	0.00 in
Mud Drop	
Amt. of fill	0.00 ft
Btm. H. Temp.	1000.00 F
Hole Condition	
% Porosity	0.00
Packer Size	6.75 in
No. of Packers	2
Cushion Amt.	0.00
Cushion Type	
Reversed Out	
Tool Chased	
Tester	Ray Schwager
Co. Rep.	Robert Stolzle
Contr.	Discovery
Rig #	2
Unit #	
Pump T.	

Test Successful: N

CHART PAGE



This is a photocopy of the actual AK-1 recorder chart

TRILOBITE TESTING L.L.C.

P.O. Box 362 • Hays, Kansas 67601

Nº 12935

Test Ticket

Well Name & No.	<u>Hoffman "A" #15</u>	Test No.	<u>2</u>	Date	<u>3-20-00</u>
Company	<u>John O. Farmer, Inc</u>	Zone Tested	<u>Lansing "B"</u>		
Address	<u>P.O. Box 352 Russell, Ks 67665</u>	Elevation	<u>1921</u>	KB	<u>1913</u> GL
Co. Rep / Geo.	<u>Bob Stalale</u>	Cont.	<u>Discovery rig 2</u>	Est. Ft. of Pay	<u>-</u> Por. <u>-</u> %
Location: Sec.	<u>7</u>	Twp.	<u>16^s</u>	Rge.	<u>13^w</u> Co. <u>Barton</u> State <u>Ks</u>
No. of Copies	<u>Reg</u>	Distribution Sheet (Y, N)	<u>n</u>	Turnkey (Y, N)	<u>n</u> Evaluation (Y, N) <u>n</u>

Interval Tested	<u>3081-3096</u>	Initial Str Wt./Lbs.	<u>40000</u>	Unseated Str Wt./Lbs.	<u>40000</u>
Anchor Length	<u>15</u>	Wt. Set Lbs.	<u>20000</u>	Wt. Pulled Loose/Lbs.	<u>80000</u>
Top Packer Depth	<u>3076</u>	Tool Weight	<u>2000</u>		
Bottom Packer Depth	<u>3081</u>	Hole Size — 7 7/8"	<u>yes</u>	Rubber Size — 6 3/4"	<u>yes</u>
Total Depth	<u>3096</u>	Wt. Pipe Run	<u>-</u>	Drill Collar Run	<u>30</u>
Mud Wt.	<u>9.1</u> LCM <u>2#</u> Vis. <u>39</u> WL <u>10</u>	Drill Pipe Size	<u>4 1/2 XH</u>	Ft. Run	<u>30.31</u>
Blow Description	<u>IFP - Weak Blow throughout 3" to 1 1/2" Blow</u> <u>FFP - NO Blow</u>				

Slid Tool approx 6ft to Bottom

Recovery — Total Feet	<u>45</u>	GIP	<u>-</u>	Ft. in DC	<u>30</u>	Ft. in DP	<u>15</u>
Rec.	<u>45</u>	Feet Of	<u>Mud</u>	%gas	%oil	%water	%mud
Rec.		Feet Of	<u>Misrun</u>	%gas	%oil	%water	%mud
Rec.		Feet Of	<u>plugged Tool</u>	%gas	%oil	%water	%mud
Rec.		Feet Of		%gas	%oil	%water	%mud
Rec.		Feet Of		%gas	%oil	%water	%mud
BHT	<u>100</u>	°F Gravity	<u>-</u>	°API D@	<u>-</u>	°F Corrected Gravity	<u>-</u> °API
RW	<u>-</u>	@	<u>-</u>	°F Chlorides	<u>-</u>	ppm Recovery	Chlorides <u>8500</u> ppm System

(A) Initial Hydrostatic Mud	AK-1	Alpine	PSI Recorder No.	<u>11085</u>	T-On Location	<u>1000</u>
(B) First Initial Flow Pressure			PSI (depth)	<u>3087</u>	T-Started	<u>1015</u>
(C) First Final Flow Pressure			PSI Recorder No.	<u>13547</u>	T-Open	<u>1115</u>
(D) Initial Shut-In Pressure			PSI (depth)	<u>3090</u>	T-Pulled	<u>1330</u>
(E) Second Initial Flow Pressure			PSI Recorder No.	<u>-</u>	T-Out	<u>1500</u>
(F) Second Final Flow Pressure			PSI (depth)	<u>-</u>	T-Off Location	<u>1510</u>
(G) Final Shut-in Pressure			PSI Initial Opening	<u>15</u>	Test	<input checked="" type="checkbox"/>
(Q) Final Hydrostatic Mud			PSI Initial Shut-in	<u>30</u>	Jars	
			Final Flow	<u>30</u>	Safety Joint	<input checked="" type="checkbox"/>
			Final Shut-in	<u>60</u>	Straddle	

TRILOBITE TESTING L.L.C. SHALL NOT BE LIABLE FOR DAMAGE OF ANY KIND OF THE PROPERTY OR PERSONNEL OF THE ONE FOR WHOM A TEST IS MADE, OR FOR ANY LOSS SUFFERED OR SUSTAINED, DIRECTLY OR INDIRECTLY, THROUGH THE USE OF ITS EQUIPMENT, OR ITS STATEMENTS OR OPINION CONCERNING THE RESULTS OF ANY TEST. TOOLS LOST OR DAMAGED IN THE HOLE SHALL BE PAID FOR AT COST BY THE PARTY FOR WHOM THE TEST IS MADE.

Approved By	<u>Robert Stalale</u>	Mileage	
Our Representative	<u>Ray Schwager Thank you</u>	Other	
		TOTAL PRICE \$	<input checked="" type="checkbox"/>

TRILOBITE TESTING L.L.C.

OPERATOR : John O. Farmer, Inc.

DATE 3-21-00

WELL NAME: Hoffman "A" #15

KB 1921.00 ft

TICKET NO: 12936 DST #3

LOCATION : 7-16s-13w Barton co KS

GR 1913.00 ft

FORMATION: Lansing C & D

INTERVAL : 3101.00 To 3130.00 ft

TD 3130.00 ft

TEST TYPE: CONVETIONAL

RECORDER DATA

Mins		Field	1	2	3	4	TIME DATA-----
PF 15	Rec.	11085	11085				PF Fr. 0250 to 0305 hr
SI 30	Range(Psi)	4300.0	4300.0	0.0	0.0	0.0	IS Fr. 0305 to 0335 hr
SF 60	Clock(hrs)	12	12				SF Fr. 0335 to 0435 hr
FS 120	Depth(ft)	3121.0	3121.0	0.0	0.0	0.0	FS Fr. 0435 to 0635 hr

	Field	1	2	3	4	
A. Init Hydro	1528.0	1535.0	0.0	0.0	0.0	T STARTED 0130 hr
B. First Flow	88.0	107.0	0.0	0.0	0.0	T ON BOTM 0245 hr
B1. Final Flow	88.0	95.0	0.0	0.0	0.0	T OPEN 0250 hr
C. In Shut-in	99.0	94.0	0.0	0.0	0.0	T PULLED 0635 hr
D. Init Flow	77.0	83.0	0.0	0.0	0.0	T OUT 0820 hr
E. Final Flow	77.0	60.0	0.0	0.0	0.0	
F. Fl Shut-in	110.0	103.0	0.0	0.0	0.0	TOOL DATA-----
G. Final Hydro	1528.0	1511.0	0.0	0.0	0.0	Tool Wt. 2000.00 lbs
Inside/Outside	0	0				Wt Set On Packer 20000.00 lbs
						Wt Pulled Loose 84000.00 lbs
						Initial Str Wt 43000.00 lbs
						Unseated Str Wt 43000.00 lbs
						Bot Choke 0.75 in
						Hole Size 7.78 in
						D Col. ID 2.25 in
						D. Pipe ID 3.80 in
						D.C. Length 30.00 ft
						D.P. Length 3049.00 ft

RECOVERY

Pot Fluid 91.00 ft of 30.00 ft in DC and 61.00 ft in DP
 1.00 ft of Oil
 30.00 ft of Muddy water
 0.00 ft of 70% water 30% mud
 0.00 ft of
 0.00 ft of
 0.00 ft of
 0.00 ft of
 0.00 ft of

SALINITY 36000.00 P.P.M. A.P.I. Gravity 0.00

BLOW DESCRIPTION

Initial Flow:
 Weak blow throughout. 1/2" to 2" blow
 Final Flow:
 Weak blow throughout. 1" blow.

Tool Slid approx 5 feet to bottom.

SAMPLES:

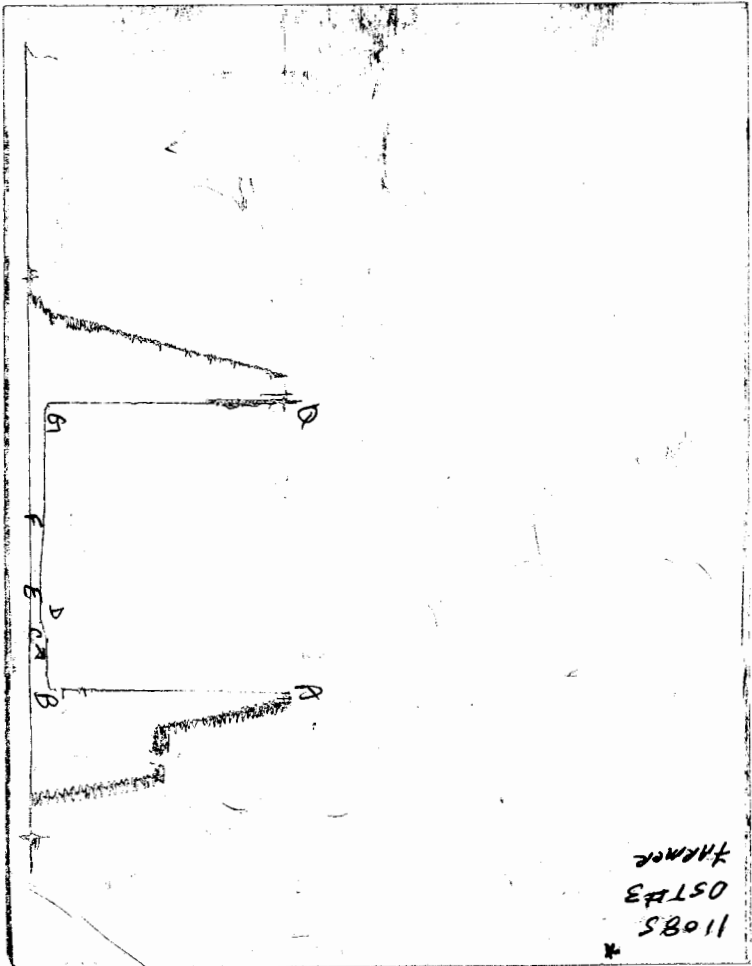
SENT TO:

MUD DATA-----

Mud Type	Chemical
Weight	9.20 lb/cf
Vis.	53.00 S/L
W.L.	10.00 in3
F.C.	0.00 in
Mud Drop	
Amt. of fill	0.00 ft
Btm. H. Temp.	1030.00 F
Hole Condition	
% Porosity	0.00
Packer Size	6.75 in
No. of Packers	2
Cushion Amt.	0.00
Cushion Type	
Reversed Out	
Tool Chased	
Tester	Ray Schwager
Co. Rep.	Robert Stolzle
Contr.	Discovery
Rig #	2
Unit #	
Pump T.	

Test Successful: Y

CHART PAGE



This is a photocopy of the actual AK-1 recorder chart

TRILOBITE TESTING L.L.C.

P.O. Box 362 • Hays, Kansas 67601

Nº 12936

Test Ticket

Well Name & No.	<u>Hoffman "A" #15</u>	Test No.	<u>3</u>	Date	<u>3-21-00</u>
Company	<u>John O. Farmer, Inc</u>	Zone Tested	<u>Lansing C=0</u>		
Address	<u>P.O. Box 352 Russell, Ks 67665</u>	Elevation	<u>1921</u>	KB	<u>1913</u> GL
Co. Rep / Geo.	<u>Bob Stolze</u>	Cont.	<u>Discovery rig 2</u>	Est. Ft. of Pay	<u>-</u> Por. <u>-</u> %
Location: Sec.	<u>7</u>	Twp.	<u>16^s</u>	Rge.	<u>13^w</u> Co. <u>BARTON</u> State <u>Ks</u>
No. of Copies	<u>Reg</u>	Distribution Sheet (Y, N)	<u>N</u>	Turnkey (Y, N)	<u>N</u> Evaluation (Y, N) <u>-</u>

Interval Tested	<u>3101 - 3130</u>	Initial Str Wt./Lbs.	<u>43000</u>	Unseated Str Wt./Lbs.	<u>43000</u>
Anchor Length	<u>29</u>	Wt. Set Lbs.	<u>20000</u>	Wt. Pulled Loose/Lbs.	<u>84000</u>
Top Packer Depth	<u>3096</u>	Tool Weight	<u>2000</u>		
Bottom Packer Depth	<u>3101</u>	Hole Size — 7 7/8"	<u>yes</u>	Rubber Size — 6 3/4"	<u>yes</u>
Total Depth	<u>3130</u>	Wt. Pipe Run	<u>-</u>	Drill Collar Run	<u>30</u>
Mud Wt.	<u>9.2</u>	LCM	<u>2#</u>	Vis.	<u>53</u> WL <u>10</u>
Blow Description	<u>IFP - WEAK BLOW THROUGHOUT 1/2" TO 2" BLOW</u> <u>FFP - WEAK BLOW THROUGHOUT 1" BLOW</u>				

Slid Tool approx 5' to bottom

Recovery — Total Feet	<u>90</u>	GIP	<u>-</u>	Ft. in DC	<u>30</u>	Ft. in DP	<u>61</u>
Rec.	<u>1</u>	Feet Of	<u>oil</u>	%gas	<u>-</u>	%oil	<u>-</u>
Rec.	<u>90</u>	Feet Of	<u>MW</u>	%gas	<u>-</u>	%oil	<u>70</u>
Rec.		Feet Of		%gas	<u>-</u>	%oil	<u>30</u>
Rec.		Feet Of		%gas	<u>-</u>	%oil	<u>-</u>
Rec.		Feet Of		%gas	<u>-</u>	%oil	<u>-</u>
BHT	<u>103</u>	°F Gravity	<u>-</u>	°API D@	<u>-</u>	°F Corrected Gravity	<u>-</u>
RW	<u>.31</u>	@	<u>48</u>	°F Chlorides	<u>36000</u>	ppm Recovery	<u>8400</u>
				Chlorides	<u>8400</u>	ppm System	<u>-</u>

	AK-1	Alpine		
(A) Initial Hydrostatic Mud	<u>1528</u>		PSI Recorder No.	<u>11085</u>
(B) First Initial Flow Pressure	<u>88</u>		(depth)	<u>3121</u>
(C) First Final Flow Pressure	<u>88</u>		PSI Recorder No.	<u>13547</u>
(D) Initial Shut-In Pressure	<u>99</u>		(depth)	<u>3124</u>
(E) Second Initial Flow Pressure	<u>77</u>		PSI Recorder No.	<u>-</u>
(F) Second Final Flow Pressure	<u>77</u>		(depth)	<u>-</u>
(G) Final Shut-in Pressure	<u>110</u>		PSI Initial Opening	<u>15</u>
(Q) Final Hydrostatic Mud	<u>1528</u>		PSI Initial Shut-in	<u>30</u>
			Final Flow	<u>60</u>
			Final Shut-in	<u>120</u>

TRILOBITE TESTING L.L.C. SHALL NOT BE LIABLE FOR DAMAGE OF ANY KIND OF THE PROPERTY OR PERSONNEL OF THE ONE FOR WHOM A TEST IS MADE, OR FOR ANY LOSS SUFFERED OR SUSTAINED, DIRECTLY OR INDIRECTLY, THROUGH THE USE OF ITS EQUIPMENT, OR ITS STATEMENTS OR OPINION CONCERNING THE RESULTS OF ANY TEST. TOOLS LOST OR DAMAGED IN THE HOLE SHALL BE PAID FOR AT COST BY THE PARTY FOR WHOM THE TEST IS MADE.

Approved By Robert Stolze
 Our Representative Ray Schwager Thank you

T-On Location 1:00 am
 T-Started 1:30
 T-Open 2:50
 T-Pulled 6:35
 T-Out 8:20
 T-Off Location 8:30
 Test
 Jars _____
 Safety Joint
 Straddle _____
 Circ. Sub _____
 Sampler _____
 Extra Packer _____
 Elec. Rec. _____
 Mileage _____
 Other _____
 TOTAL PRICE \$

TRILOBITE TESTING L.L.C.

OPERATOR : John O. Farmer, Inc.

DATE 3-21-00

WELL NAME: Hoffman "A" #15

KB 1921.00 ft

TICKET NO: 12937 DST #4

LOCATION : 7-16s-13w Barton co KS

GR 1913.00 ft

FORMATION: Lansing E & F

INTERVAL : 3140.00 To 3171.00 ft

TD 3171.00 ft

TEST TYPE: CONVENTIONAL

RECORDER DATA

Mins	Field	1	2	3	4	TIME DATA-----
PF 15 Rec.	11085	11085	13547			PF Fr. 1740 to 1755 hr
SI 30 Range(Psi)	4300.0	4300.0	4200.0	0.0	0.0	IS Fr. 1755 to 1825 hr
SF 30 Clock(hrs)	12	12	12			SF Fr. 1825 to 1855 hr
FS 60 Depth(ft)	3163.0	3163.0	3166.0	0.0	0.0	FS Fr. 1855 to 1955 hr

	Field	1	2	3	4	
A. Init Hydro	1571.0	1569.0	0.0	0.0	0.0	T STARTED 1630 hr
B. First Flow	88.0	118.0	0.0	0.0	0.0	T ON BOTM 1735 hr
B1. Final Flow	88.0	109.0	0.0	0.0	0.0	T OPEN 1740 hr
C. In Shut-in	143.0	142.0	0.0	0.0	0.0	T PULLED 1955 hr
D. Init Flow	88.0	128.0	0.0	0.0	0.0	T OUT 2115 hr
E. Final Flow	88.0	96.0	0.0	0.0	0.0	
F. Fl Shut-in	143.0	136.0	0.0	0.0	0.0	
G. Final Hydro	1571.0	1569.0	0.0	0.0	0.0	
Inside/Outside	0	0	I			

TOOL DATA-----

Tool Wt.	2000.00 lbs
Wt Set On Packer	20000.00 lbs
Wt Pulled Loose	48000.00 lbs
Initial Str Wt	43000.00 lbs
Unseated Str Wt	43000.00 lbs
Bot Choke	0.75 in
Hole Size	7.78 in
D Col. ID	2.25 in
D. Pipe ID	3.80 in
D.C. Length	30.00 ft
D.P. Length	3078.00 ft

RECOVERY

Tot Fluid 50.00 ft of 30.00 ft in DC and 20.00 ft in DP
 50.00 ft of Oil cut mud
 0.00 ft of 12% oil 88% mud
 0.00 ft of
 0.00 ft of
 0.00 ft of
 0.00 ft of
 0.00 ft of
 0.00 ft of

SALINITY 0.00 P.P.M. A.P.I. Gravity 0.00

MUD DATA-----

Mud Type	Chemical
Weight	9.20 lb/cf
Vis.	46.00 S/L
W.L.	9.20 in3
F.C.	0.00 in
Mud Drop	

Amt. of fill 0.00 ft
 Btm. H. Temp. 1020.00 F

Hole Condition
 % Porosity 0.00
 Packer Size 6.75 in
 No. of Packers 2
 Cushion Amt. 0.00

Cushion Type
 Reversed Out
 Tool Chased

Tester Ray Schwager
 Co. Rep. Robert Stolzle
 Contr. Discovery
 Rig # 2
 Unit #
 Pump T.

BLOW DESCRIPTION

Initial Flow:
 Weak blow throughout. 1/4" blow.
 Final Flow:
 Very weak surface blow throughout.

SAMPLES:
 SENT TO:

Test Successful: Y

CALCULATED RECOVERY ANALYSIS

DST 4

TICKET 12937

SAMPLE #	TOTAL FEET	GAS		OIL		WATER		MUD		
		%	FEET	%	FEET	%	FEET	%	FEET	
DRILL	1	20	0	0	12	2.4	0	0	88	17.6
PIPE	2	0	0	0	0	0	0	0	0	0
	3	0	0	0	0	0	0	0	0	0
	4	0	0	0	0	0	0	0	0	0
	5	0	0	0	0	0	0	0	0	0
	6	0	0	0	0	0	0	0	0	0
WEIGHT	1	0	0	0	0	0	0	0	0	0
PIPE	2	0	0	0	0	0	0	0	0	0
	3	0	0	0	0	0	0	0	0	0
	4	0	0	0	0	0	0	0	0	0
	5	0	0	0	0	0	0	0	0	0
DRILL	1	30	0	0	12	3.6	0	0	88	26.4
COLLARS	2	0	0	0	0	0	0	0	0	0
	3	0	0	0	0	0	0	0	0	0
	4	0	0	0	0	0	0	0	0	0
	5	0	0	0	0	0	0	0	0	0
TOTAL		50	0	0	0	6	0	0	0	44

BBL OIL= 0.051732 * HRS OPEN 0.75 = BBL/DAY 1.655424
 BBL WATER= 0 * = 0
 BBL MUD= 0.379368
 BBL GAS = 0

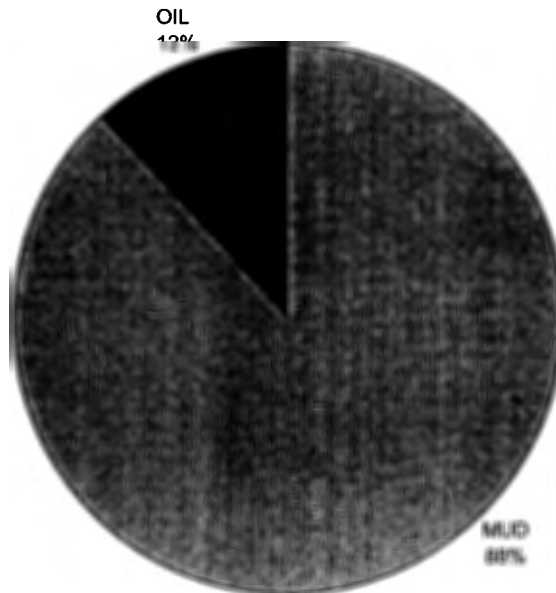
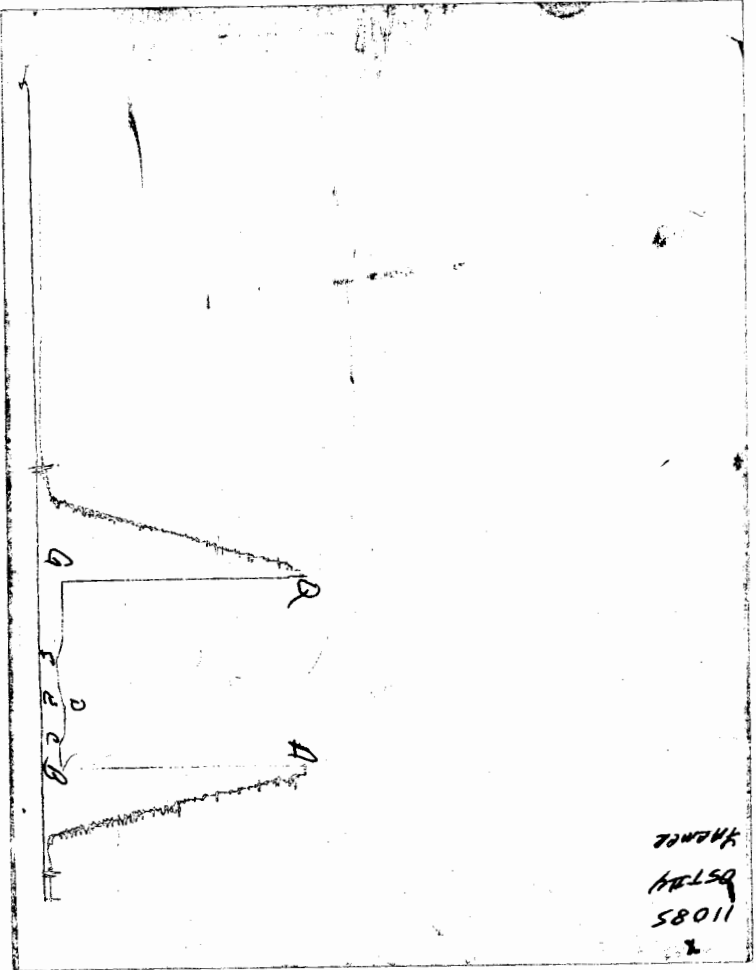


CHART PAGE



This is a photocopy of the actual AK-1 recorder chart

TRILOBITE TESTING L.L.C.

P.O. Box 362 • Hays, Kansas 67601

№ 12937

Test Ticket

Well Name & No. <u>Hoffman "A" #15</u>	Test No. <u>4</u>	Date <u>3-21-00</u>	
Company <u>John O. Farmer, Inc</u>	Zone Tested <u>Lansing E & F</u>		
Address <u>P.O. Box 352 Russell, Ks 67665</u>	Elevation <u>1921</u> KB <u>1913</u> GL		
Co. Rep / Geo. <u>Bob Stohle</u>	Cont. <u>Discovery rig 2</u>	Est. Ft. of Pay <u>-</u>	Por. <u>-</u> %
Location: Sec. <u>7</u>	Twp. <u>16^s</u>	Rge. <u>13^w</u>	Co. <u>BARTON</u> State <u>Ks</u>
No. of Copies <u>Req</u>	Distribution Sheet (Y, N) <u>N</u>	Turnkey (Y, N) <u>N</u>	Evaluation (Y, N) <u>N</u>

Interval Tested <u>3140-3171</u>	Initial Str Wt./Lbs. <u>43000</u>	Unseated Str Wt./Lbs. <u>43000</u>
Anchor Length <u>31</u>	Wt. Set Lbs. <u>20000</u>	Wt. Pulled Loose/Lbs. <u>48000</u>
Top Packer Depth <u>3135</u>	Tool Weight <u>2000</u>	
Bottom Packer Depth <u>3140</u>	Hole Size — 7 7/8" <u>yes</u>	Rubber Size — 6 3/4" <u>yes</u>
Total Depth <u>3171</u>	Wt. Pipe Run <u>-</u>	Drill Collar Run <u>30</u>
Mud Wt. <u>9.2</u> LCM <u>2#</u> Vis. <u>46</u> WL <u>9.2</u>	Drill Pipe Size <u>4 1/2 X 11</u>	Ft. Run <u>3078</u>
Blow Description <u>FFP - Weak Blow Throughout 1/4" Blow</u> <u>FFP - Very Weak Blow Throughout surface Blow</u>		

Recovery — Total Feet <u>50</u>	GIP <u>-</u>	Ft. in DC <u>30</u>	Ft. in DP <u>20</u>
Rec. <u>50</u> Feet Of <u>OCM</u>	%gas <u>12</u>	%oil <u>-</u>	%water <u>88</u>
Rec. _____ Feet Of _____	%gas _____	%oil _____	%water _____
Rec. _____ Feet Of _____	%gas _____	%oil _____	%water _____
Rec. _____ Feet Of _____	%gas _____	%oil _____	%water _____
Rec. _____ Feet Of _____	%gas _____	%oil _____	%water _____
BHT <u>102</u> °F Gravity <u>-</u>	°API D@ <u>-</u>	°F Corrected Gravity <u>-</u>	°API <u>-</u>
RW <u>-</u> @ <u>-</u> °F	Chlorides <u>-</u> ppm	Recovery Chlorides <u>6800</u> ppm	System <u>-</u>

	AK-1	Alpine		
(A) Initial Hydrostatic Mud <u>1571</u>			PSI Recorder No. <u>11085</u>	T-On Location <u>1610</u>
(B) First Initial Flow Pressure <u>88</u>			PSI (depth) <u>3163</u>	T-Started <u>1630</u>
(C) First Final Flow Pressure <u>88</u>			PSI Recorder No. <u>13547</u>	T-Open <u>1740</u>
(D) Initial Shut-In Pressure <u>143</u>			PSI (depth) <u>3166</u>	T-Pulled <u>1955</u>
(E) Second Initial Flow Pressure <u>88</u>			PSI Recorder No. <u>-</u>	T-Out <u>2115</u>
(F) Second Final Flow Pressure <u>88</u>			PSI (depth) <u>-</u>	T-Off Location <u>2130</u>
(G) Final Shut-in Pressure <u>143</u>			PSI Initial Opening <u>15</u>	Test <input checked="" type="checkbox"/>
(Q) Final Hydrostatic Mud <u>1571</u>			PSI Initial Shut-in <u>30</u>	Jars _____
			Final Flow <u>30</u>	Safety Joint <input checked="" type="checkbox"/>
			Final Shut-in <u>60</u>	Straddle _____

TRILOBITE TESTING L.L.C. SHALL NOT BE LIABLE FOR DAMAGE OF ANY KIND OF THE PROPERTY OR PERSONNEL OF THE ONE FOR WHOM A TEST IS MADE, OR FOR ANY LOSS SUFFERED OR SUSTAINED, DIRECTLY OR INDIRECTLY, THROUGH THE USE OF ITS EQUIPMENT, OR ITS STATEMENTS OR OPINION CONCERNING THE RESULTS OF ANY TEST. TOOLS LOST OR DAMAGED IN THE HOLE SHALL BE PAID FOR AT COST BY THE PARTY FOR WHOM THE TEST IS MADE.

Approved By Robert Stohle, Agent
 Our Representative Ray Schwager Thank you

Circ. Sub _____
 Sampler _____
 Extra Packer _____
 Elec. Rec. _____
 Mileage _____
 Other _____
 TOTAL PRICE \$

TRILOBITE TESTING L.L.C.

OPERATOR : John O. Farmer DATE 3-22-00
 WELL NAME: Hoffman "A" #15 KB 1921.00 ft TICKET NO: 12938 DST #5
 LOCATION : 7-16s-13w Barton co KS GR 1913.00 ft FORMATION: Lansing "G"
 INTERVAL : 3172.00 To 3200.00 ft TD 3200.00 ft TEST TYPE: COVENTIONAL

RECORDER DATA

Mins	Field	1	2	3	4	TIME DATA-----
PF 15 Rec.	11085	11085	13547			PF Fr. 0345 to 0400 hr
SI 30 Range(Psi)	4300.0	4300.0	4200.0	0.0	0.0	IS Fr. 0400 to 0430 hr
SF 60 Clock(hrs)	12	12	12			SF Fr. 0430 to 0530 hr
FS 120 Depth(ft)	3191.0	3191.0	3194.0	0.0	0.0	FS Fr. 0530 to 0730 hr

	Field	1	2	3	4	
A. Init Hydro	1560.0	1611.0	0.0	0.0	0.0	T STARTED 0250 hr
B. First Flow	88.0	128.0	0.0	0.0	0.0	T ON BOTM 0340 hr
B1. Final Flow	88.0	100.0	0.0	0.0	0.0	T OPEN 0345 hr
C. In Shut-in	154.0	134.0	0.0	0.0	0.0	T PULLED 0730 hr
D. Init Flow	88.0	122.0	0.0	0.0	0.0	T OUT 1030 hr
E. Final Flow	88.0	91.0	0.0	0.0	0.0	
F. Fl Shut-in	154.0	153.0	0.0	0.0	0.0	
G. Final Hydro	1560.0	1592.0	0.0	0.0	0.0	TOOL DATA-----
Inside/Outside	0	0	I			Tool Wt. 2000.00 lbs
						Wt Set On Packer 20000.00 lbs
						Wt Pulled Loose 60000.00 lbs
						Initial Str Wt 43000.00 lbs
						Unseated Str Wt 44000.00 lbs
						Bot Choke 0.75 in
						Hole Size 7.78 in
						D Col. ID 2.25 in
						D. Pipe ID 3.80 in
						D.C. Length 30.00 ft
						D.P. Length 3120.00 ft

RECOVERY

Pot Fluid 71.00 ft of 30.00 ft in DC and 41.00 ft in DP
 1.00 ft of Clean oil
 0.00 ft of 100% oil
 10.00 ft of Oil cut mud
 0.00 ft of 5% oil 95% mud
 0.00 ft of Slightly oil cut watery mud
 0.00 ft of 1% oil 40% water 59% mud
 1.00 ft of
 1.00 ft of
 SALINITY 27000.00 P.P.M. A.P.I. Gravity 0.00

MUD DATA-----
 Mud Type Chemical
 Weight 9.20 lb/cf
 Vis. 46.00 S/L
 W.L. 9.20 in3
 F.C. 0.00 in
 Mud Drop

Amt. of fill 0.00 ft
 Btm. H. Temp. 1040.00 F
 Hole Condition
 % Porosity 0.00
 Packer Size 6.75 in
 No. of Packers 2
 Cushion Amt. 0.00
 Cushion Type
 Reversed Out
 Tool Chased
 Tester Ray Schwager
 Co. Rep. Robert Stolzle
 Contr. Discovery
 Rig # 2
 Unit #
 Pump T.

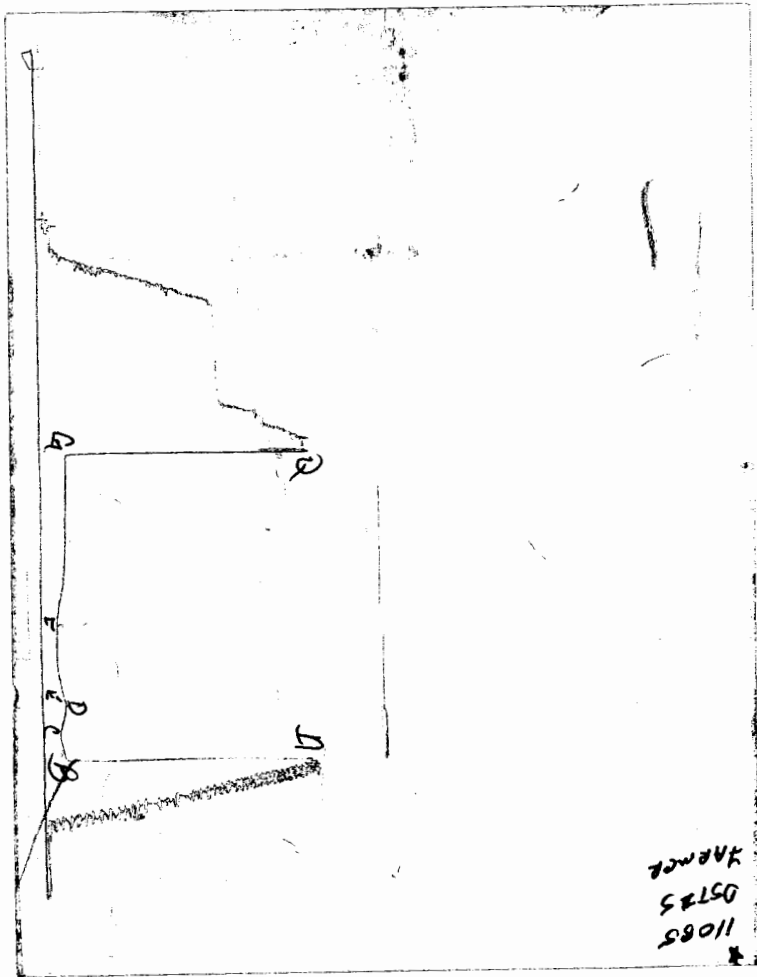
LOW DESCRIPTION

Initial Flow:
 Weak blow throughout. 1/2" to 2" blow
 Final Flow:
 Weak blow throughout. 1/2" blow.

SAMPLES:
 SENT TO:

Test Successful: Y

CHART PAGE



This is a photocopy of the actual AK-1 recorder chart

TRILOBITE TESTING L.L.C.

P.O. Box 362 • Hays, Kansas 67601

Nº 12938

Test Ticket

Well Name & No.	<u>Hoffman "A" #15</u>	Test No.	<u>5</u>	Date	<u>3-22-00</u>
Company	<u>John O. Farmer, Inc</u>	Zone Tested	<u>Lansing "G"</u>		
Address	<u>P.O. Box 352 Russell, Ks 67665</u>	Elevation	<u>1921</u>	KB	<u>1913</u> GL
Co. Rep / Geo.	<u>Bob Stolzle</u>	Cont.	<u>Discovery rig 2</u>	Est. Ft. of Pay	<u>-</u> Por. <u>-</u> %
Location: Sec.	<u>7</u>	Twp.	<u>16</u>	Rge.	<u>13</u>
			Co.	<u>BARTON</u>	State <u>Ks</u>
No. of Copies	<u>Reg</u>	Distribution Sheet (Y, N)	<u>n</u>	Turnkey (Y, N)	<u>n</u>
		Evaluation (Y, N)	<u>-</u>		

Interval Tested	<u>3172 - 3200</u>	Initial Str Wt./Lbs.	<u>43000</u>	Unseated Str Wt./Lbs.	<u>44000</u>
Anchor Length	<u>28</u>	Wt. Set Lbs.	<u>20000</u>	Wt. Pulled Loose/Lbs.	<u>60000</u>
Top Packer Depth	<u>3167</u>	Tool Weight	<u>2000</u>		
Bottom Packer Depth	<u>3172</u>	Hole Size — 7 7/8"	<u>yes</u>	Rubber Size — 6 3/4"	<u>yes</u>
Total Depth	<u>3200</u>	Wt. Pipe Run	<u>-</u>	Drill Collar Run	<u>36</u>
Mud Wt. <u>9.2</u> LCM <u>2#</u> Vis. <u>46</u> WL <u>9.2</u>		Drill Pipe Size	<u>4 1/2 XH</u>	Ft. Run	<u>3120</u>
Blow Description	<u>IFP - WEAK Blow Throughout 1/2" To 2" Blow</u>				
	<u>FFP - WEAK Blow Throughout 1/2" Blow</u>				

Recovery — Total Feet	<u>71</u>	GIP	<u>-</u>	Ft. in DC	<u>30</u>	Ft. in DP	<u>41</u>
Rec.	<u>1</u>	Feet Of	<u>CO</u>	%gas	<u>-</u>	%oil	<u>-</u>
				%water	<u>-</u>	%mud	<u>-</u>
Rec.	<u>40</u>	Feet Of	<u>OCM</u>	%gas	<u>5</u>	%oil	<u>95</u>
				%water	<u>1</u>	%mud	<u>59</u>
Rec.	<u>30</u>	Feet Of	<u>50CWM</u>	%gas	<u>40</u>	%oil	<u>59</u>
				%water	<u>-</u>	%mud	<u>-</u>
Rec.		Feet Of		%gas	<u>-</u>	%oil	<u>-</u>
				%water	<u>-</u>	%mud	<u>-</u>
BHT	<u>104</u>	°F Gravity	<u>-</u>	°API D@	<u>-</u>	°F Corrected Gravity	<u>-</u>
				°API	<u>-</u>		<u>-</u>
RW	<u>.34</u>	@	<u>57</u>	°F Chlorides	<u>27000</u>	ppm Recovery	<u>6800</u>
				ppm System	<u>-</u>		<u>-</u>

	AK-1	Alpine			
(A) Initial Hydrostatic Mud	<u>1560</u>	PSI Recorder No.	<u>11085</u>	T-On Location	<u>230</u>
(B) First Initial Flow Pressure	<u>88</u>	PSI (depth)	<u>3191</u>	T-Started	<u>250</u>
(C) First Final Flow Pressure	<u>88</u>	PSI Recorder No.	<u>13547</u>	T-Open	<u>345</u>
(D) Initial Shut-In Pressure	<u>154</u>	PSI (depth)	<u>3194</u>	T-Pulled	<u>730</u>
(E) Second Initial Flow Pressure	<u>88</u>	PSI Recorder No.	<u>-</u>	T-Out	<u>1030</u>
(F) Second Final Flow Pressure	<u>88</u>	PSI (depth)	<u>-</u>	T-Off Location	<u>1045</u>
(G) Final Shut-in Pressure	<u>154</u>	PSI Initial Opening	<u>15</u>	Test	<input checked="" type="checkbox"/>
(Q) Final Hydrostatic Mud	<u>1560</u>	PSI Initial Shut-in	<u>30</u>	Jars	<u>-</u>
		Final Flow	<u>60</u>	Safety Joint	<input checked="" type="checkbox"/>
		Final Shut-in	<u>120</u>	Straddle	<u>-</u>

TRILOBITE TESTING L.L.C. SHALL NOT BE LIABLE FOR DAMAGE OF ANY KIND OF THE PROPERTY OR PERSONNEL OF THE ONE FOR WHOM A TEST IS MADE, OR FOR ANY LOSS SUFFERED OR SUSTAINED, DIRECTLY OR INDIRECTLY, THROUGH THE USE OF ITS EQUIPMENT, OR ITS STATEMENTS OR OPINION CONCERNING THE RESULTS OF ANY TEST. TOOLS LOST OR DAMAGED IN THE HOLE SHALL BE PAID FOR AT COST BY THE PARTY FOR WHOM THE TEST IS MADE.

Approved By	<u>Robert Stolzle Agent</u>	Mileage	<u>-</u>
Our Representative	<u>Ray Schwager Thank you</u>	Other	<u>-</u>
		TOTAL PRICE \$	<u>✓</u>

TRILOBITE TESTING L.L.C.

OPERATOR : John O. Farmer, Inc.
 WELL NAME: Hoffman "A" #15
 LOCATION : 7-16s-13w Barton co KS
 INTERVAL : 3215.00 To 3380.00 ft

DATE 3-23-00
 KB 1921.00 ft TICKET NO: 12939 DST #6
 GR 1913.00 ft FORMATION: Lansing
 TD 3380.00 ft TEST TYPE: CONVENTIONAL

RECORDER DATA

Mins	Field	1	2	3	4	TIME DATA-----
PF 15 Rec.	11085	11085	13547			PF Fr. 1445 to 1500 hr
SI 30 Range(Psi)	4300.0	4300.0	4200.0	0.0	0.0	IS Fr. 1500 to 1530 hr
SF 30 Clock(hrs)	12	12	12			SF Fr. 1530 to 1600 hr
FS 60 Depth(ft)	3218.0	3218.0	3221.0	0.0	0.0	FS Fr. 1600 to 1700 hr

	Field	1	2	3	4	
A. Init Hydro	1603.0	1584.0	0.0	0.0	0.0	T STARTED 1310 hr
B. First Flow	77.0	88.0	0.0	0.0	0.0	T ON BOTM 1440 hr
B1. Final Flow	66.0	80.0	0.0	0.0	0.0	T OPEN 1445 hr
C. In Shut-in	352.0	344.0	0.0	0.0	0.0	T PULLED 1700 hr
D. Init Flow	77.0	84.0	0.0	0.0	0.0	T OUT 1845 hr
E. Final Flow	66.0	70.0	0.0	0.0	0.0	
F. Fl Shut-in	319.0	325.0	0.0	0.0	0.0	TOOL DATA-----
G. Final Hydro	1625.0	1616.0	0.0	0.0	0.0	Tool Wt. 2000.00 lbs
Inside/Outside	0	0				Wt Set On Packer 20000.00 lbs
						Wt Pulled Loose 75000.00 lbs
						Initial Str Wt 43000.00 lbs
						Unseated Str Wt 43000.00 lbs
						Bot Choke 0.75 in
						Hole Size 7.78 in
						D Col. ID 2.25 in
						D. Pipe ID 3.80 in
						D.C. Length 30.00 ft
						D.P. Length 3163.00 ft

RECOVERY

Tot Fluid 20.00 ft of 20.00 ft in DC and 0.00 ft in DP
 20.00 ft of Mud w/ slight show of oil
 0.00 ft of 100% mud
 0.00 ft of
 0.00 ft of
 0.00 ft of
 0.00 ft of
 0.00 ft of
 0.00 ft of
 0.00 ft of

SALINITY 0.00 P.P.M. A.P.I. Gravity 0.00

BLOW DESCRIPTION

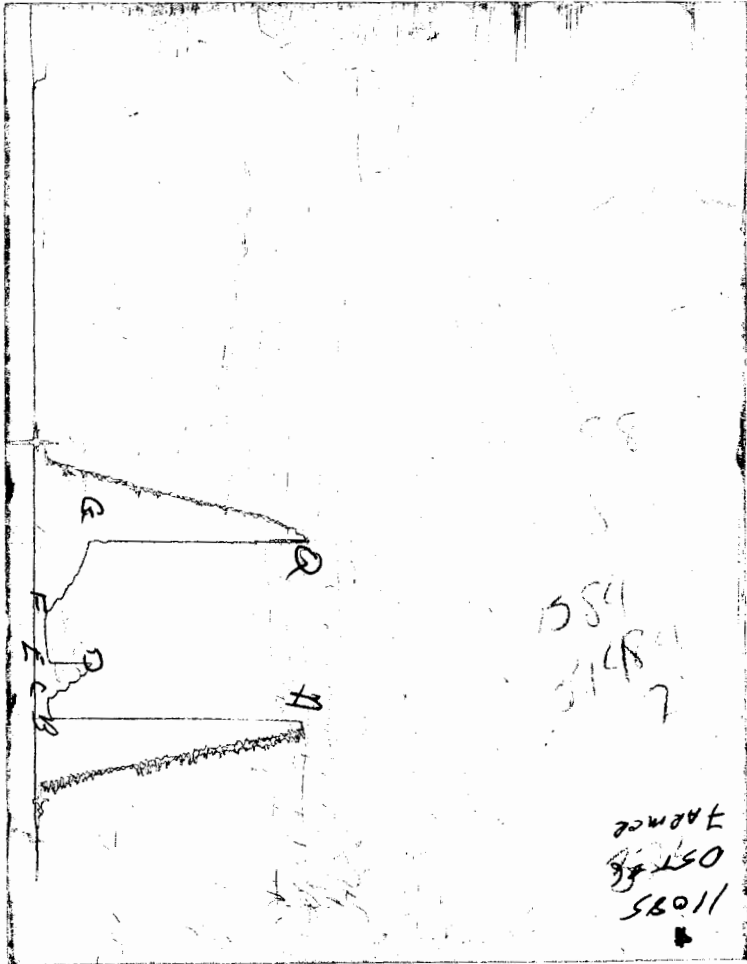
Initial Flow:
 Weak blow throughout 1/4" blow.
 Final Flow:
 Very weak surface blow, died in approximately 15 minutes.

SAMPLES:
 SENT TO:

MUD DATA-----
 Mud Type Chemical
 Weight 9.20 lb/cf
 Vis. 52.00 S/L
 W.L. 9.00 in3
 F.C. 0.00 in
 Mud Drop
 Amt. of fill 0.00 ft
 Btm. H. Temp. 1050.00 F
 Hole Condition
 % Porosity 0.00
 Packer Size 6.75 in
 No. of Packers 2
 Cushion Amt. 0.00
 Cushion Type
 Reversed Out
 Tool Chased
 Tester Ray Schwager
 Co. Rep. Robert Stolzle
 Contr. Discovery
 Rig # 2
 Unit #
 Pump T.

Test Successful: Y

CHART PAGE



This is a photocopy of the actual AK-1 recorder chart

