

15-009-25027

17-16s-13w

DIAMOND TESTING

P.O. Box 157

HOISINGTON, KANSAS 67544

(620) 653-7550 • (800) 542-7313

STC 21108.D440

Page 1 of 2 Pages

Company Hupfer Operating, Inc. Lease & Well No. Berry No. 2
 Elevation 1932 KB Formation Arbuckle Effective Pay --Ft. Ticket No. J2043
 Date 3-16-07 Sec. 17 Twp. 16S Range 13W County Barton State Kansas
 Test Approved By Josh Austin Diamond Representative John C. Riedl

Formation Test No. 1 Interval Tested from 3,400 ft. to 3,416 ft. Total Depth 3,416 ft.
 Packer Depth 3,395 ft. Size 6 3/4 in. Packer Depth -- ft. Size -- in.
 Packer Depth 3,400 ft. Size 6 3/4 in. Packer Depth -- ft. Size -- in.
 Depth of Selective Zone Set ft.

Top Recorder Depth (Inside) 3,403 ft. Recorder Number 21108 Cap. 5,000 psi
 Bottom Recorder Depth (Outside) 3,413 ft. Recorder Number 11017 Cap. 4,000 psi
 Below Straddle Recorder Depth ft. Recorder Number Cap. psi

Drilling Contractor Sterling Drilling Company - Rig 1 Drill Collar Length 250 ft. I.D. 2 1/4 in.
 Mud Type Chemical Viscosity 54 Weight Pipe Length -- ft. I.D. -- in.
 Weight 8.9 Water Loss 8.8 cc. Drill Pipe Length 3,130 ft. I.D. 3 1/2 in.
 Chlorides 2,000 P.P.M. Test Tool Length 20 ft. Tool Size 3 1/2 - IF in.
 Jars: Make Bowen Serial Number Not Run Anchor Length 16 ft. Size 4 1/2 - FH in.
 Did Well Flow? No Reversed Out No Surface Choke Size 1 in. Bottom Choke Size 5/8 in.
 Main Hole Size 7 7/8 in. Tool Joint Size 4 1/2 - XH in.

Blow: 1st Open: Strong, 10 in., blow. No blow back during shut-in.
 2nd Open: Strong, 9 in., blow. No blow back during shut-in.

Recovered 20 ft. of gas in pipe
 Recovered 160 ft. of clean gassy oil = 1.715200 bbls. (Grind out: 10%-gas; 90%-oil)
 Recovered 130 ft. of oil & gas cut watery mud = .639600 bbls. (Grind out: 20%-oil; 25%-gas; 25%-water; 30%-mud)
 Recovered 60 ft. of slightly oil cut muddy water = .295200 bbls. (Grind out: 5%-oil; 30%-mud; 65%-water)
 Recovered 350 ft. of TOTAL FLUID = 2.650000 bbls. Chlorides: 22,000 Ppm

Remarks

Time Set Packer(s) 10:25 ~~P.M.~~ ^{XXX} Time Started Off Bottom 1:25 ~~P.M.~~ ^{A.M.} Maximum Temperature 112°
 Initial Hydrostatic Pressure (A) 1644 P.S.I.
 Initial Flow Period Minutes 45 (B) 42 P.S.I. to (C) 132 P.S.I.
 Initial Closed In Period Minutes 45 (D) 1075 P.S.I.
 Final Flow Period Minutes 45 (E) 139 P.S.I. to (F) 168 P.S.I.
 Final Closed In Period Minutes 45 (G) 1064 P.S.I.
 Final Hydrostatic Pressure (H) 1610 P.S.I.

GENERAL INFORMATION

Client Information:

Company: HUPFER OPERATING INC
Contact: DENNIS HUPFER
Phone: Fax: e-mail:

Site Information:

Contact: JOSH AUSTIN
Phone: Fax: e-mail:

Well Information:

Name: BERRY #2
Operator: HUPFER OPERATING INC
Location-Downhole: DST #1 3400 TO 3416
Location-Surface: S5/16S/13W BARTON COUNTY

Test Information:

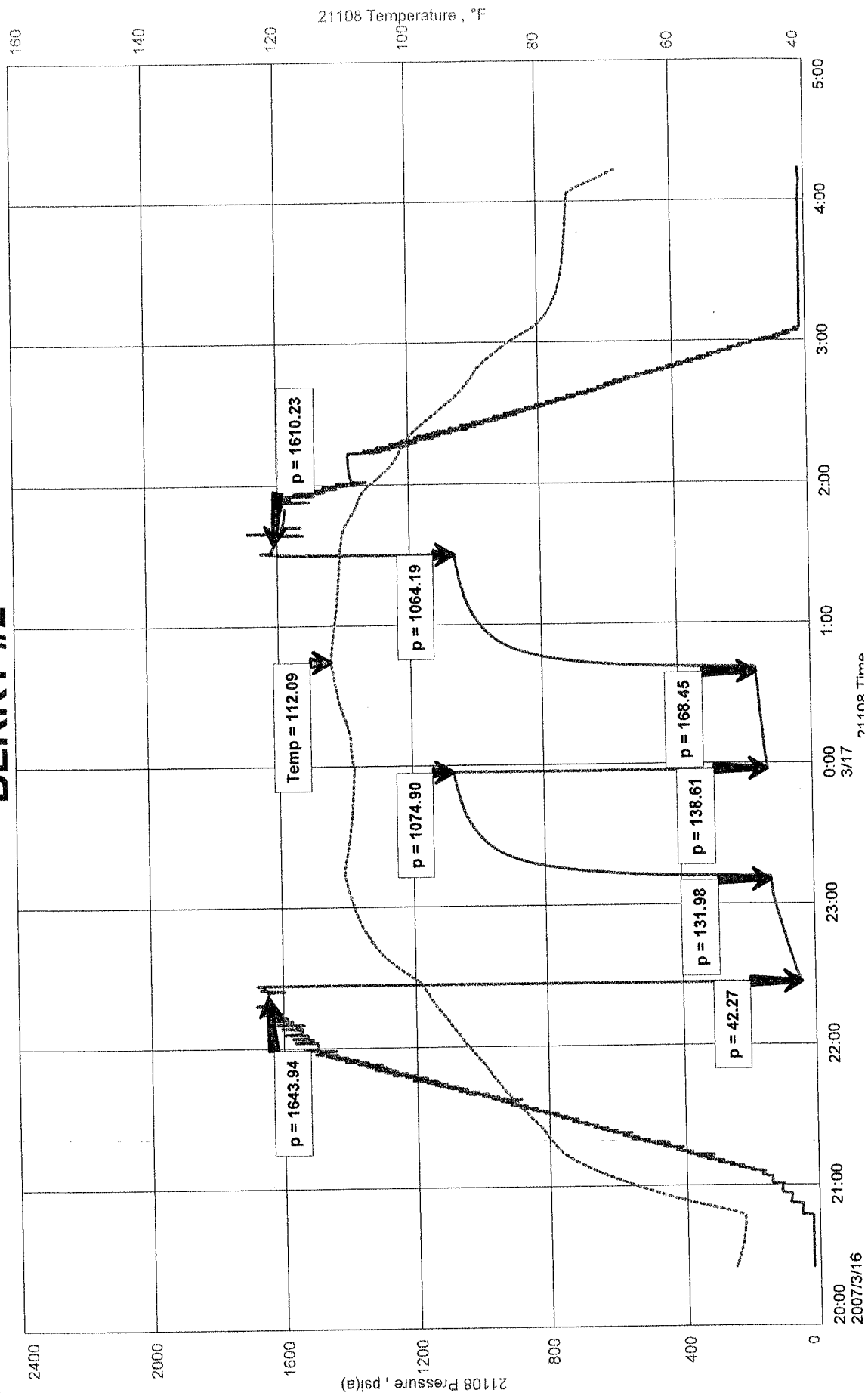
Company: DIAMOND TESTING
Representative: JOHN RIEDL
Supervisor: JOSH AUSTIN
Test Type: CONVENTIONAL Job Number: D440
Test Unit: 2
Start Date: 2007/03/16 Start Time: 20:23:00
End Date: 2007/03/17 End Time: 04:10:00
Report Date: 2007/03/17 Prepared By: JOHN RIEDL
Remarks: Qualified By: DENNIS HUPFER

RECOVERY: 350' TOTAL FLUID REC. SEE TEST TICKET FOR FLUID BREAKDOWN

BERRY #2
Formation: ARBUCKLE
Job Number: D440

HUPFER OPERATING INC
DST #1 3400 TO 3416
Start Test Date: 2007/03/16
Final Test Date: 2007/03/17

BERRY #2



HUFFER OP'NG DST #1
BERKY #2

RDC #NO 73
OUTSIDE

