

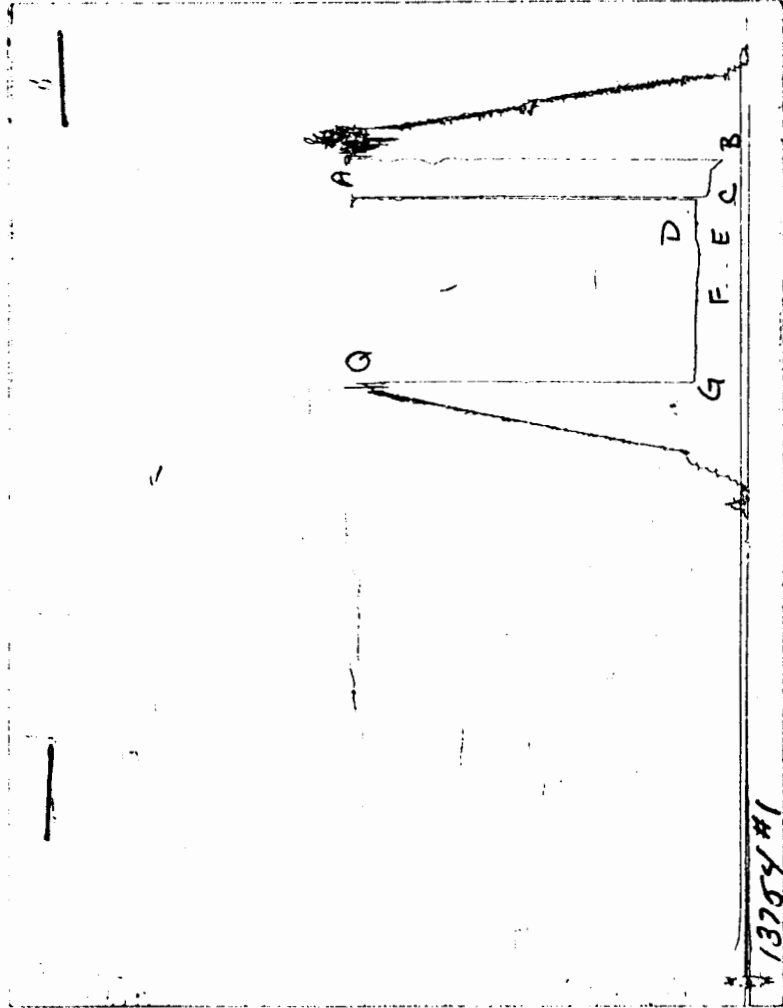
Computer Inventoried
Computer Inventoried

ORIGINAL

WELL NAME: Hiltabidle "C" #2
OPERATOR: American Energies Corp
LOCATION: Sec 28 Rge 16S Twp 21W
Ness County Kansas
DATE: 03/04/96

15-135-23913

CHART PAGE



This is a photocopy of the actual AK-1 recorder chart

CALCULATED RECOVERY ANALYSIS

DST # 1

TICKET 8708

SAMPLE #	TOTAL FEET	GAS		OIL		WATER		MUD	
		%	FEET	%	FEET	%	FEET	%	FEET
DRL PIPE	1	164	30	49.2	70	114.8	0		0
	2	267	30	80.1	40	106.8	0	30	80.1
	3			0		0	0		0
	4			0		0	0		0
	5			0		0	0		0
	6			0		0	0		0
WGT PIPE	1			0		0	0		0
	2			0		0	0		0
	3			0		0	0		0
	4			0		0	0		0
COLLARS	1	155	30	46.5	40	62	0	30	46.5
	2	62	10	6.2	10	6.2	0	80	49.6
	3			0		0	0		0
	4			0		0	0		0
	5			0		0	0		0
TOTAL	648		182		289.8		0		176.2

HRS OPE BBL/DAY

BBL OIL= 3.48465 * 1.25 66.9053
 BBL WATER= 0 * 0
 BBL MUD= 1.608951
 BBL GAS = 2.096349

