

DRILLER'S WELL LOG

COPY

DATE COMMENCED: September 8, 1991
DATE COMPLETED: September 15, 1991

Carmen Schmitt, Inc.
#1 HINMAN
100'N of NW/4
Sec. 27, T16S, R21W
Ness County, Ks.

0 - 1087' Surface Soil, Clay, Shale, Sand
1087 - 1573' Lime & Shale
1573 - 1608' Anhydrite
1608 - 4152' Lime & Shale
4152 - 4162' Sand
4162 - 4192' Lime, Shale, Sand
4192 - 4250' Lime & Shale
4250' RTD

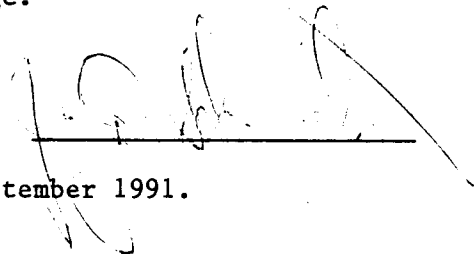
ELEVATION: 2286' K.B.

Surface Pipe: Set used
8-5/8", 20# pipe @ 216'
w/140 sacks 60/40 pozmix
25 gel 3% cc.

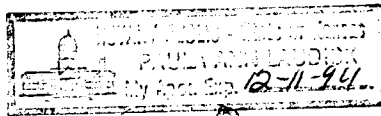
A F F I D A V I T

STATE OF KANSAS
COUNTY OF BARTON) ss

Jay Schneider of lawful age, does swear and state that the facts and statements herein are true and correct to the best of his knowledge.



Subscribed and sworn to before me this 17th day of September 1991.


Notary Public

RECEIVED
KANSAS CORPORATION COMMISSION

JAN 22 1992
CONSERVATION DIVISION
WICHITA, KS

CARMEN SCHMITT, INC.
#1 Hinman
100' N of C NW/4 Sec. 27-T16S-R21W
Ness County, Kansas

WELL SUMMARY

Well Name: Carmen Schmitt, Inc.
#1 Hinman

Location: 100' N of C NW/4 Sec. 27-T16S-R21W
Ness County, Kansas

Elevation: 2277 G.L. 2286 K.B.

Contractor: Duke Drilling Company - Rig #4

Spud Date: 9/08/91

Completion Date: 9/14/91

Bits:	Bit #1	12-1/4"	Surface	HTC	ATJ-15	0'- 220'
	Bit #2	7-7/8"	Retip	Reed	HP-12	220'-1399'
	Bit #3	7-7/8"	Rerun	Security	S85CF	1399'-3273'
	Bit #4	7-7/8"	Rerun	HTC	ATJ-11H	3273'-4250'

Cores: None

Tests: Trilobite Testing Company, Hays, Kansas.
D.S.T. #1 4152'-4162' (Cherokee 'A' Sandstone) op 15" Rec.
30' slightly oil cut mud (10% oil, 90% mud), 660' gassy oil
specked water, 120' sand; FP 165#-388#, SIP -, HP 2082#-
2067#.

Deviations: 1399' - 3/4° 3273' - 1-1/2° 4162' - 1-1/2°

Logs: Wire-Tech, Great Bend, Kansas: Dual Induction Log - Compensated
Density Neutron Log

Mud: Mud Co., Great Bend, Kansas

Status: Dry Hole

CHRONOLOGICAL LOG

- 9/08/91 Set in rig. Spud 12-1/4" Surface Hole @ 10:35 a.m. Drill 220'. Run 5 Jts. (204.90') of 8-5/8" 20# Surface Casing. Set @ 216.60' with 140 sx. 60/40 Poz, 3% CC, 2% Gel by Allied Cement. Plug down @ 3:00 p.m. Cement did circulate.
- 9/09/91 At 7:00 a.m.: Drilling @ 1087'. Bit trip @ 1399' - Straight Hole Deviation of 3/4°.
- 9/10/91 At 7:00 a.m.: Drilling @ 2312'.
- 9/11/91 At 7:00 a.m.: Drilling @ 3070'. Bit trip @ 3273' - Straight Hole Deviation of 1-1/2°; Pipe strap is 0.85' short to board.
- 9/12/91 Displace mud @ 3600'.
At 7:00 a.m.: Drilling @ 3638'. Trip pipe: hole in drill string.
- 9/13/91 At 7:00 a.m.: Drilling @ 4148'. Prepare for D.S.T. #1, 4152'-4162'; Pipe strap: 0.48' long to board; Hole Deviation 1-1/2°.
- 9/14/91 Run D.S.T. #1.
At 7:00 a.m.: Drilling @ 4197'. Drill to R.T.D. @ 4250'. Condition hole; loss of circulation. Run open hole logs. Plug and abandon #1 Hinman test well.

FORMATION LOG TOPS

Stone Corral	1572'	(+714)
Heebner Shale	3663'	(-1377)
Toronto	3686'	(-1400)
Lansing/K.C.	3707'	(-1421)
Base/K.C.	3972'	(-1686)
Pawnee	4054'	(-1768)
Labette Shale	4142'	(-1840)
Ft. Scott	4142'	(-1856)
Cherokee Shale	4152'	(-1866)
'A' Sandstone	4160'	(-1874)
'B' Sandstone	4171'	(-1885)
'C' Sandstone	4178'	(-1892)
'Basal' Sandstone	4197'	(-1911)
Mississippian	4211'	(-1925)

RECEIVED
 KANSAS CORPORATION COMMISSION
 JAN 22 1992
 CONSERVATION DIVISION
 WICHITA, KS

COPY

SAMPLE DESCRIPTION

NOTE: Samples were examined wet, logged back on drilling time and corrected for log tops.

Zones of Interest:

Heebner Shale - 3663' (-1377)

Shale, dark black, illuminescent, soft, platy, fissile.

Toronto - 3686' (-1400)

Limestone, lt. buff, crystalline, chalky, tight; fossiliferous. No show.

Lansing-Kansas City - 3707' (-1421)

3707'-3714': Limestone, lt. buff, crystalline, dense, tight. No show.

3717'-3749': Limestone, lt. buff, microcrystalline, v. hard, v. tight. No show.

3735'-3749': Limestone, buff, crystalline; sucrosic, oomoldic in part, crumbly. No show.

3753'-3768': Limestone, white, microcrystalline to crystalline, v. hard, v. tight. No show.

3773'-3786': Limestone, lt. buff, microcrystalline to crystalline, v. hard, v. tight. No show.

3789'-3800': Limestone, white, microcrystalline, hard, tight. No show.

3802'-3842': Limestone, buff, crystalline; sucrosic, peletal in part, fossiliferous, tight. No show.

3846'-3862': Limestone, white to lt. buff, microcrystalline to crystalline, tight. No show.

3870'-3888': Limestone, lt. buff, microcrystalline, hard, tight. No show.

3896'-3920': Limestone, lt. buff to buff, oolitic to macro-oolitic, no permeability. No show.

3926'-3946': Limestone, lt. buff, oolitic, no permeability. No show.

3954'-3972': Limestone, lt. buff, microcrystalline, v. hard, v. tight. No show.

RECEIVED

KANSAS CORPORATION COMMISSION

JAN 20 1982

Pawnee - 4054' (-1768)

Chert, lt. orange at top grading to opaque lt. grey at base, v. hard, v. tight. No show.

Labette Shale - 4126' (-1840)

Shale, dark grey to black, firm, soft, platy, fissile.

Ft. Scott - 4142' (-1856)

Limestone, white, v. sandy, sucrosic; v. tight, hard. No show.

Cherokee Shale - 4152' (-1866)

Shale, reddish brown, unconsolidated, gummy; silty in part.

'A' Sandstone - 4160' (-1874)

Sandstone, clear, fine to v. coarse grained quartz conglomerate, angular to sub-angular, spherical; v. clean, no visible signs of cementation or clays; scattered straining on grains; show of free oil in cluster, excellent porosity and permeability.

Tested by D.S.T. #1

'B' Sandstone - 4171' (-1886)

Sandstone, clear to white, very fine grain quartz conglomerate, angular to sub-angular, sub-spherical; indurated, fair cementation w/calcite cement. No show.

'C' Sandstone - 4178' (-1892)

Sandstone, white, very fine grain quartz conglomerate, sub-angular, sub-spherical; indurated, calcite cement; some intergranular clay. No show.

'Basal' Sandstone - 4197 (-1911)

Sandstone, speckled, very fine grained, angular; v. dirty, tightly cemented; fr. amount of intergranular clay. No show.

Mississippian - 4211' (-1925)

Dolomite, cream to buff, crystalline, sucrosic in part; v. large amounts of yellow, intercrystalline chert, v. hard, v. tight. No show.

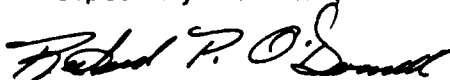
COPY

WELL SUMMARY

Carmen Schmitt's Inc. #1 Hinman test well encountered the primary objective, the Cherokee 'A' Sandstone, structurally 1' low to Chief Drilling Company's #1 Shineman abandoned producing well approximately 950' to the southeast (150' W of SE NW Sec. 27-T16S-R21W). D.S.T. #1 proved the top of the 'A' Sandstone to be of excellent reservoir quality, yet also to be primarily water bearing due to the lack of structure. There were no other significant shows of oil in the #1 Hinman.

As a result, it was decided by all parties present to plug and abandon the #1 Hinman test well.

Respectfully submitted,



Richard P. O'Donnell
Petroleum Geologist
Sheets Oil Company