



WESTERN TESTING CO., INC.
FORMATION TESTING

TICKET N° 6720

P. O. BOX 1599 WICHITA, KANSAS 67201
PHONE (316) 262-5861

Elevation 2277 G.L. Formation Eff. Pay Ft.

District Wakeeney Date 2-4-85 Customer Order No.

COMPANY NAME Pickrell Drilling Company
ADDRESS 110 N Market Suite 205 Wichita KS.

LEASE AND WELL NO. Cline #1-C COUNTY Ness STATE KS. Sec. 15 Twp. 16 S Rge. 21 W

Mail Invoice To Co. Name Address No. Copies Requested 5

Mail Charts To #1-C CLINE same Address No. Copies Requested 5

Formation Test No. 2 Interval Tested From 4109 ft. to 4161 ft. Total Depth 4161 ft.
Packer Depth 4109 ft. Size 6 3/4 in. Packer Depth ft. Size in.
Packer Depth 4109 ft. Size 6 3/4 in. Packer Depth ft. Size in.

Top Recorder Depth (Inside) 4112 ft. Recorder Number 4376 Cap. 4000
Bottom Recorder Depth (Outside) 4115 ft. Recorder Number 6234 Cap. 4500
Below Straddle Recorder Depth ft. Recorder Number Cap.

Drilling Contractor Pickrell #10 Drill Collar Length 150 I. D. 3.5 in.
Mud Type chem Viscosity 48 Weight Pipe Length I. D. in.
Weight 9.3 Water Loss 12 cc. Drill Pipe Length 3939 I. D. 3.6 in.
Chlorides 15,000 P.P.M. Test Tool Length 20 ft. Tool Size 5 1/2 in.
Jars: Make Serial Number Anchor Length 52 ft. Size 5 1/2 in.
Did Well Flow? Reversed Out YES Surface Choke Size 3/4 in. Bottom Choke Size 3/4 in.
Main Hole Size 7 1/8 in. Tool Joint Size 4 1/2 X.H. in.

Blow I.F.P. Strong Bottom of Bucket IN 1 min
F.F.P. Very weak Building to Bottom of Bucket IN 10 min. Then Dipping Down to 3" IN Buckets

Recovered 120 ft. of mud
Recovered 600 ft. of muddy water
Recovered 1500 ft. of water
Recovered ft. of
Recovered ft. of
Chlorides 32,000 P.P.M. Sample Jars used 2 Remarks Slid 5' to Bottom

Time On Location 2:00 Time Pick Up Tool 3:00 Time Off Location 1:00
Time Set Packer(s) 5:25 Time Started Off Bottom 9:25 Maximum Temperature 120°
Initial Hydrostatic Pressure (A) 2133 P.S.I.
Initial Flow Period (B) 739 P.S.I. to (C) 1042 P.S.I.
Initial Closed In Period (D) 1062 P.S.I.
Final Flow Period (E) 1052 P.S.I. to (F) 1052 P.S.I.
Final Closed In Period (G) 1052 P.S.I.
Final Hydrostatic Pressure (H) 2102 P.S.I.

RECEIVED FEB. 07. 1985

COMPANY TERMS

Western Testing Co., Inc. shall not be liable for damages of any kind to the property or personnel of the one for whom a test is made or for any loss suffered or sustained directly or indirectly through the use of its equipment, of its statements or opinion concerning the results of any test. Tools lost or damaged in the hole shall be paid at cost by the party for whom the test is made. All charges subject to 12% interest after 60 days from date of invoice. Any expense incurred for collection will be added to the original amount.

Test Approved By Signature of Customer or his authorized representative

Western Representative Kaz Kozle 1135

FIELD INVOICE

Open Hole Test \$ 2595
Misrun \$
Straddle Test \$
Jars \$
Selective Zone \$
Safety Joint \$
Standby \$
Evaluation \$
Extra Packer \$
Circ. Sub. \$ 135
Mileage \$
Fluid Sampler \$

WESTERN TESTING CO., INC.
Pressure Data

Date: 2-4-85 Test Ticket No. 6720
 Recorder No. 4376 Capacity _____ Location _____
 Clock No. _____ Elevation _____ Well Temperature _____

Point	Pressure	P.S.I.	Open Tool	Time Given	Time Computed
A Initial Hydrostatic Mud	<u>2113</u>	P.S.I.	_____ M		
B First Initial Flow Pressure	<u>704</u>	P.S.I.	First Flow Pressure	<u>30</u> Mins.	_____ Min
C First Final Flow Pressure	<u>1020</u>	P.S.I.	Initial Closed-in Pressure	<u>60</u> Mins.	_____ Min
D Initial Closed-in Pressure	<u>1048</u>	P.S.I.	Second Flow Pressure	<u>60</u> Mins.	_____ Min
E Second Initial Flow Pressure	<u>1051</u>	P.S.I.	Final Closed-in Pressure	<u>80</u> Mins.	_____ Min
F Second Final Flow Pressure	<u>1051</u>	P.S.I.			
G Final Closed-in Pressure	<u>1051</u>	P.S.I.			
H Final Hydrostatic Mud	<u>2088</u>	P.S.I.			

PRESSURE BREAKDOWN

First Flow Pressure
Breakdown: 7 Inc.
of 5 mins. and a
final inc. of 0 Min.

Initial Shut-In
Breakdown: 21 Inc.
of 3 mins. and a
final inc. of 0 Min.

Second Flow Pressure
Breakdown: 13 Inc.
of 5 mins. and a
final inc. of 0 Min.

Final Shut-In
Breakdown: 20 Inc.
of 3 mins. and a
final inc. of 0 Min.

Point Mins.	Press.	Point Minutes	Press.	Point Minutes	Press.	Point Minutes	Press.
P 1 0	<u>704</u>	0	<u>1020</u>	0	<u>1051</u>	0	<u>1051</u>
P 2 5	<u>735</u>	3	<u>1031</u>	5		3	
P 3 10	<u>824</u>	6	<u>1036</u>	10		6	
P 4 15	<u>889</u>	9	<u>1039</u>	15	<u>1051</u>	9	
P 5 20	<u>948</u>	12	<u>1040</u>	20		12	
P 6 25	<u>995</u>	15	<u>1041</u>	25		15	<u>1051</u>
P 7 30	<u>1020</u>	18	<u>1042</u>	30	<u>1051</u>	18	
P 8 35		21	<u>1043</u>	35		21	
P 9 40		24	<u>1044</u>	40		24	
P10 45		27	<u>1045</u>	45	<u>1051</u>	27	
P11 50		30	<u>1046</u>	50		30	<u>1051</u>
P12 55		33	<u>1047</u>	55		33	
P13 60		36	<u>1047</u>	60	<u>1051</u>	36	
P14 65		39	<u>1047</u>	65		39	
P15 70		42	<u>1048</u>	70		42	
P16 75		45	<u>1048</u>	75		45	<u>1051</u>
P17 80		48		80		48	
P18 85		51		85		51	
P19 90		54		90		54	
P20 95		57		95		57	
100		60	<u>1048</u>	100		60	<u>1051</u>

WESTERN TESTING CO., INC.
Pressure Data

Date _____ Test Ticket No. _____
 Recorder No. _____ Capacity _____ Location _____ Ft
 Clock No. _____ Elevation _____ Well Temperature _____ °F

Point	Pressure		Time Given	Time Computed
A	Initial Hydrostatic Mud _____ P.S.I.	Open Tool	_____ M	
B	First Initial Flow Pressure _____ P.S.I.	First Flow Pressure	_____ Mins	_____ Min
C	First Final Flow Pressure _____ P.S.I.	Initial Closed-in Pressure	_____ Mins	_____ Min
D	Initial Closed-in Pressure _____ P.S.I.	Second Flow Pressure	_____ Mins	_____ Min
E	Second Initial Flow Pressure _____ P.S.I.	Final Closed-in Pressure	_____ Mins	_____ Min
F	Second Final Flow Pressure _____ P.S.I.			
G	Final Closed-in Pressure _____ P.S.I.			
H	Final Hydrostatic Mud _____ P.S.I.			

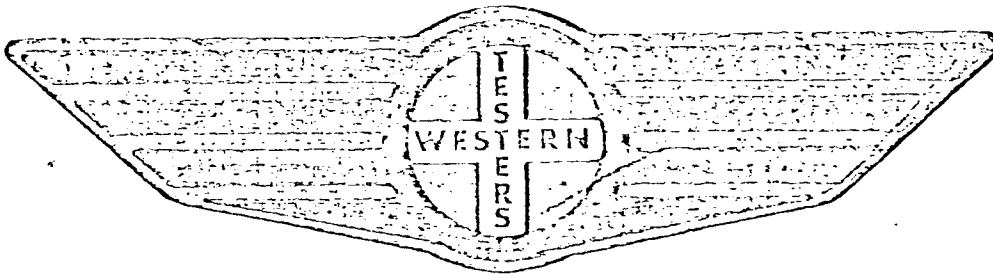
PRESSURE BREAKDOWN

Point Mins.	First Flow Pressure	Initial Shut-In	Second Flow Pressure	Final Shut-In	
	Breakdown: _____ Inc. of <u>5</u> mins. and a final inc. of <u>0</u> Min.	Breakdown: _____ Inc. of <u>3</u> mins. and a final inc. of <u>0</u> Min.	Breakdown: _____ Inc. of <u>5</u> mins. and a final inc. of <u>0</u> Min.	Breakdown: _____ Inc. of <u>3</u> mins. and a final inc. of <u>0</u> Min.	
	Press.	Point Minutes	Press.	Point Minutes	Press.
P 1	105	63	105	63	
P 2	110	66	110	66	
P 3	115	69	115	69	
P 4	120	72	120	72	
P 5	125	75	125	75	1051
P 6	130	78	130	78	
P 7	135	81	135	81	
P 8	140	84	140	84	
P 9	145	87	145	87	
P10	150	90	150	90	
P11	155	93	155	93	
P12	160	96	160	96	
P13	165	99	165	99	
P14	170	102	170	102	
P15	175	105	175	105	
P16	180	108	180	108	
P17	185	111	185	111	
P18	190	114	190	114	
P19	195	117	195	117	
P20	200	120	200	120	

FORMATION

TEST

REPORT



Home Office:

Wichita, Kansas 67201

P.O. Box 1599

Phone (316) 262-5861

Company PICKRELL DRILLING COMPANY Lease and Well No. #1 "C" CLINE Sec. 13 Twp. 16S R. 21W

WESTERN TESTING CO. INC.
SUBSURFACE PRESSURE SURVEY

DATE: 2/4/85
 CUSTOMER: PICKRELL DRILLING COMPANY
 WELL: 1 TEST: 2
 ELEVATION (KB): 2282
 SECTION: 15
 RANGE: 21W COUNTY: NESS
 GAUGE SN #4376 RANGE: 4000

TICKET #6720
 LEASE: "C" CLINE
 GEOLOGIST: FUNK
 FORMATION:
 TOWNSHIP: 16S
 STATE: KANSAS
 CLOCK: 12

INTERVAL TEST FROM: 4109 FT TO: 4161 FT TOTAL DEPTH: 4161 FT
 DEPTH OF SELECTIVE ZONE: FT
 PACKER DEPTH: 4104 FT SIZE: 6 3/4 IN PACKER DEPTH: 4109 FT SIZE: 6 3/4 IN
 PACKER DEPTH: FT SIZE: IN PACKER DEPTH: FT SIZE: IN

DRILLING CONTRACTOR: PICKRELL DRLG
 MUD TYPE: CHEMICAL VISCOSITY: 48
 WEIGHT: 9.3 WATER LOSS (CC): 12.0
 CHLORIDES (P.P.M.): 15000

JARS - MAKE: SERIAL NUMBER:
 DID WELL FLOW? REVERSED OUT? YES
 DRILL COLLAR LENGTH: 150 FT I.D.: 2.25 IN
 WEIGHT PIPE LENGTH: FT I.D.: IN
 DRILL PIPE LENGTH: 3939 FT I.D.: 3.8 IN
 TEST TOOL LENGTH: 20 FT TOOL SIZE: 5 1/2 OD IN
 ANCHOR LENGTH: 52 FT SIZE: 5 1/2 OD IN
 SURFACE CHOKE SIZE: 3/4 IN BOTTOM CHOKE SIZE: 3/4 IN
 MAIN HOLE SIZE: 7 7/8 IN TOOL JOINT SIZE: 4 1/2 XH IN

BLOW: INITIAL FLOW PERIOD STRONG BLOW. BOTTOM OF
 BUCKET IN 1 MINUTE. FINAL FLOW PERIOD VERY
 WEAK BLOW BUILDING TO BOTTOM OF BUCKET IN 10
 MINUTES; THEN DYING DOWN TO 3" IN BUCKET.

RECOVERED: 120 FT OF: MUD.
 RECOVERED: 600 FT OF: MUDDY WATER.
 RECOVERED: 1500 FT OF: WATER.
 RECOVERED: FT OF: CHLORIDES 32000 PPM.
 RECOVERED: FT OF:
 RECOVERED: FT OF:
 RECOVERED: FT OF:
 RECOVERED: FT OF:
 RECOVERED: FT OF:

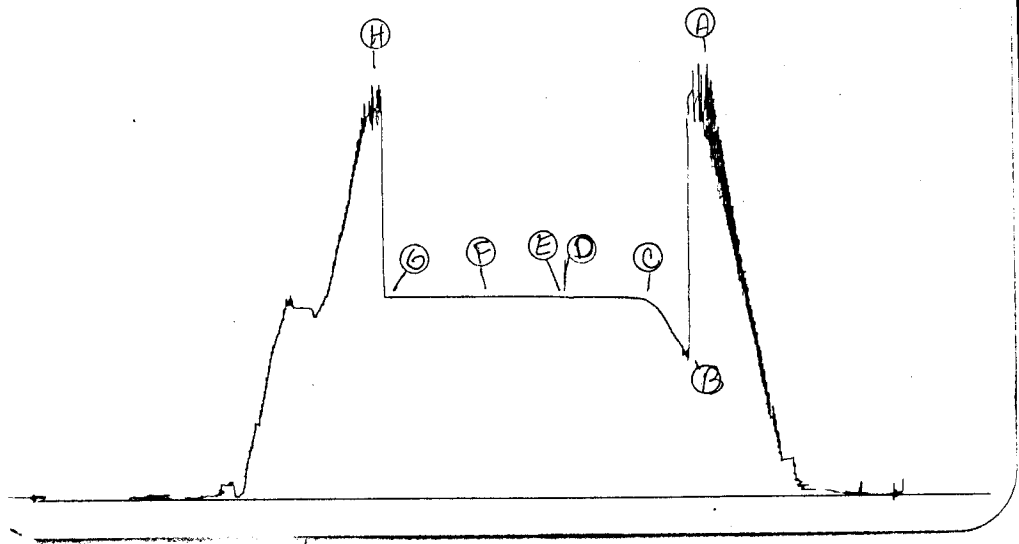
REMARKS: SLID 5 FEET TO BOTTOM.

TIME SET PACKER(S): 5:25 AM
 WELL TEMPERATURE: 120 °F
 INITIAL HYDROSTATIC PRESSURE:
 INITIAL FLOW PERIOD MIN: 30
 INITIAL CLOSED IN PERIOD MIN: 60
 FINAL FLOW PERIOD MIN: 60
 FINAL CLOSED IN PERIOD MIN: 75
 FINAL HYDROSTATIC PRESSURE

TIME STARTED OFF BOTTOM: 9:25 AM
 (A) 2113 PSI
 (B) 704 PSI TO (C) 1020 PSI
 (D) 1048 PSI
 (E) 1051 PSI TO (F) 1051 PSI
 (G) 1051 PSI
 (H) 2088 PSI

4376
D572

TKT # 6720
I



0234
DST2

TKT # 6720
0

