



WESTERN TESTING CO., INC.

FORMATION TESTING

TICKET No 20081

P. O. BOX 1599 PHONE (316) 262-5861 WICHITA, KANSAS 67201

Elevation 2425 GL Formation FT. SCOTT Eff. Pay Ft.

District GREAT Bend Date 10-17-93 Customer Order No.

COMPANY NAME Reynolds - Rexwinkle Oil, Inc.

ADDRESS 212 N. MARKET #402 WICHITA, KS 67202

LEASE AND WELL NO. BATT #1 COUNTY Ness STATE KS Sec. 30 Twp. 16 Rge. 22

Mail Invoice To Same Co. Name Address No. Copies Requested Reg

Mail Charts To Same Address No. Copies Requested Reg

Formation Test No. 1 Interval Tested From 4300 ft. to 4337 ft. Total Depth 4337 ft.

Packer Depth 4295 ft. Size 6 7/8 in. Packer Depth - ft. Size - in.

Packer Depth 4300 ft. Size 6 7/8 in. Packer Depth - ft. Size - in.

Depth of Selective Zone Set -

Top Recorder Depth (Inside) 4304 ft. Recorder Number 10270 Cap. 4150

Bottom Recorder Depth (Outside) 4307 ft. Recorder Number 13550 Cap. 4175

Below Straddle Recorder Depth - ft. Recorder Number - Cap. -

Drilling Contractor Martin Drilling rig 2 Drill Collar Length 480 I. D. 2.2 in.

Mud Type Chemical Viscosity 147 Weight Pipe Length - I. D. - in.

Weight 9.3 Water Loss 9.6 cc. Drill Pipe Length 3793 I. D. 3.8 in.

Chlorides 4000 P.P.M. Test Tool Length 27 ft. Tool Size 5 1/2 in.

Jars: Make WTC Serial Number 422 Anchor Length 37 ft. Size 5 1/2 in.

Did Well Flow? - Reversed Out - Surface Choke Size 3/4 in. Bottom Choke Size 3/4 in.

Main Hole Size 7 7/8 in. Tool Joint Size 4 1/2 x 11 in.

Blow IF - WEAK Blow throughout 1/2" to 1 1/2" Blow

FF - WEAK Blow throughout 1 1/2" to 2" Blow

Recovered 10 ft. of oil cut mud 15% oil 85% mud

Recovered 60 ft. of Heavy oil - gas cut mud 11% gas 32% oil 57% mud

Recovered 60 ft. of Heavy oil - gas cut mud

Recovered ft. of 5% gas 25% oil 20% water 50% mud

Recovered ft. of

Chlorides 5000 P.P.M. Sample Jars used 3 Remarks:

Time On Location 9:45 A.M. Time Pick Up Tool 11:50 P.M. Time Off Location P.M.

Time Set Packer(s) 1:40 A.M. Time Started Off Bottom 5:10 P.M. Maximum Temperature 122

Initial Hydrostatic Pressure (A) 2191 P.S.I.

Initial Flow Period Minutes 45 (B) 41 P.S.I. to (C) 62 P.S.I.

Initial Closed In Period Minutes 45 (D) 1070 P.S.I.

Final Flow Period Minutes 60 (E) 83 P.S.I. to (F) 93 P.S.I.

Final Closed In Period Minutes 60 (G) 1049 P.S.I.

Final Hydrostatic Pressure (H) 2118 P.S.I.

COMPANY TERMS

Western Testing Co., Inc. shall not be liable for damages of any kind to the property or personnel of the one for whom a test is made or for any loss suffered or sustained directly or indirectly through the use of its equipment, of its statements or opinion concerning the results of any test. Tools lost or damaged in the hole shall be paid at cost by the party for whom the test is made.

All charges subject to 12% interest after 60 days from date of invoice. Any expense incurred for collection will be added to the original amount.

Test Approved By [Signature] Signature of Customer or his authorized representative

Western Representative Ray Schwager THANK YOU

FIELD INVOICE

Table with 2 columns: Item Name and Amount. Items include Open Hole Test, Misrun, Straddle Test, Jars, Selective Zone, Safety Joint, Standby, Evaluation, Extra Packer, Circ. Sub., Mileage, Fluid Sampler, Extra Charts, Insurance, Telecopier, and TOTAL.

WESTERN TESTING CO., INC.
Pressure Data

Date 10-17 Test Ticket No. 20081

Recorder No. 10220 Capacity _____ Location _____ Ft.

Clock No. _____ Elevation _____ Well Temperature _____ °F

Point	Pressure	Open Tool	Time Given	Time Computed
A Initial Hydrostatic Mud	<u>2224</u> P.S.I.			M
B First Initial Flow Pressure	_____ P.S.I.	First Flow Pressure	_____ Mins.	_____ Mins.
C First Final Flow Pressure	_____ P.S.I.	Initial Closed-in Pressure	_____ Mins.	_____ Mins.
D Initial Closed-in Pressure	_____ P.S.I.	Second Flow Pressure	_____ Mins.	_____ Mins.
E Second Initial Flow Pressure	_____ P.S.I.	Final Closed-in Pressure	_____ Mins.	_____ Mins.
F Second Final Flow Pressure	_____ P.S.I.			
G Final Closed-in Pressure	_____ P.S.I.			
H Final Hydrostatic Mud	<u>2140</u> P.S.I.			

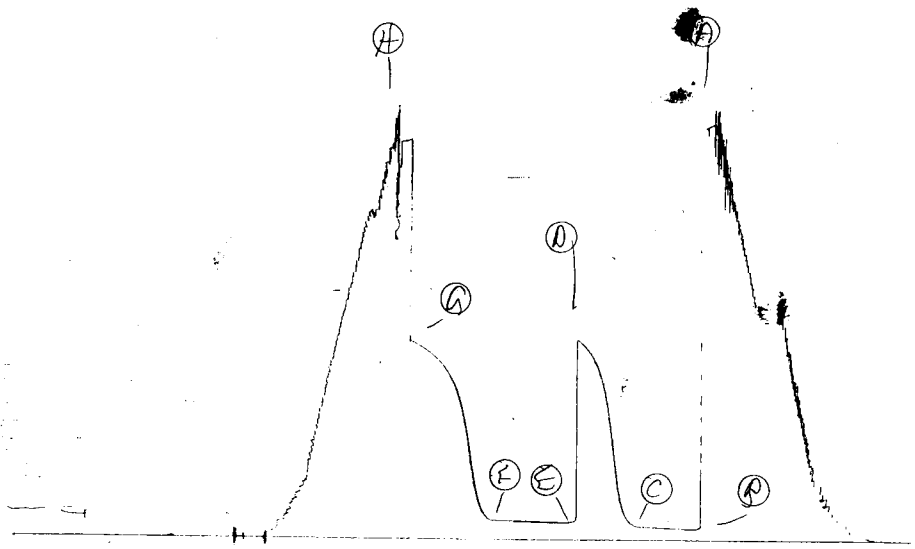
PRESSURE BREAKDOWN

First Flow Pressure		Initial Shut-In		Second Flow Pressure		Final Shut-In	
Breakdown: _____ Inc.		Breakdown: _____ Inc.		Breakdown: _____ Inc.		Breakdown: _____ Inc.	
of <u>5</u> mins. and a		of <u>3</u> mins. and a		of <u>5</u> mins. and a		of <u>3</u> mins. and a	
final inc. of <u>0</u> Min.		final inc. of <u>0</u> Min.		final inc. of <u>0</u> Min.		final inc. of <u>0</u> Min.	
Point Mins.	Press.	Point Minutes	Press.	Point Minutes	Press.	Point Minutes	Press.
P 1 0	<u>63</u>	0	<u>72</u>	0	<u>97</u>	0	<u>104</u>
P 2 5	<u>5</u>	3	<u>78</u>	5	<u>5</u>	3	<u>107</u>
P 3 10	<u>63</u>	6	<u>87</u>	10	<u>97</u>	6	<u>121</u>
P 4 15	<u>64</u>	9	<u>107</u>	15	<u>98</u>	9	<u>150</u>
P 5 20	<u>65</u>	12	<u>147</u>	20	<u>98</u>	12	<u>206</u>
P 6 25	<u>67</u>	15	<u>227</u>	25	<u>99</u>	15	<u>294</u>
P 7 30	<u>69</u>	18	<u>277</u>	30	<u>100</u>	18	<u>420</u>
P 8 35	<u>70</u>	21	<u>530</u>	35	<u>100</u>	21	<u>547</u>
P 9 40	<u>71</u>	24	<u>674</u>	40	<u>101</u>	24	<u>655</u>
P10 45	<u>72</u>	27	<u>784</u>	45	<u>102</u>	27	<u>736</u>
P11 50		30	<u>869</u>	50	<u>102</u>	30	<u>802</u>
P12 55		33	<u>924</u>	55	<u>102</u>	33	<u>857</u>
P13 60		36	<u>979</u>	60	<u>104</u>	36	<u>895</u>
P14 65		39	<u>1011</u>	65		39	<u>928</u>
P15 70		42	<u>1029</u>	70		42	<u>952</u>
P16 75		45	<u>1060</u>	75		45	<u>975</u>
P17 80		48	<u>1077</u>	80		48	<u>995</u>
P18 85		51		85		51	<u>1022</u>
P19 90		54		90		54	<u>1027</u>
P20 95		57		95		57	<u>1040</u>
100		60		100		60	<u>1052</u>
						63	<u>1061</u>
						100	<u>1061</u>

JK4 2008/1

I

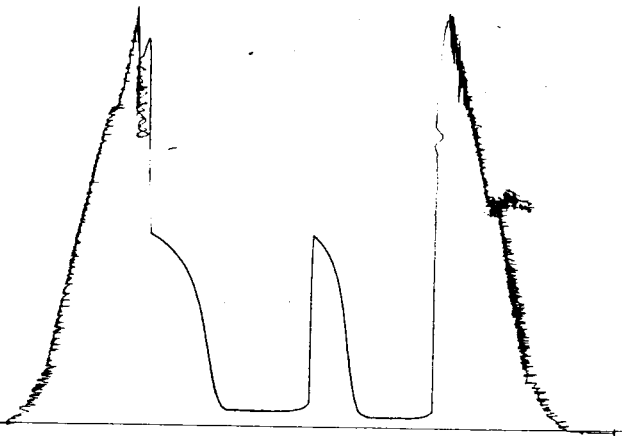
057 #1



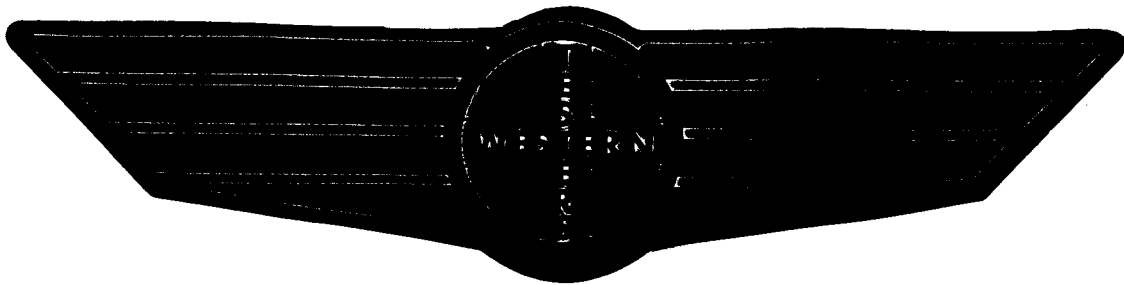
KT 20081

0

OST#
13550



FORMATION TEST REPORT



Home Office:

Wichita, Kansas 67201

P.O. Box 1599

Phone **1 - 80 - 688 - 7021**

COMPANY REYNOLDS-REXWINKLE OIL INCREASE & WELL NO. #1 BATT SEC. 30 TWP. 16S RGE. 22W TEST NO. 1 DATE 10/17/93

DST REPORT

GENERAL INFORMATION

DATE : 10/17/93	TICKET : 20081
CUSTOMER : REYNOLDS REXWINKLE OIL	LEASE : BATT
WELL : #1 TEST: 1	GEOLOGIST: REYNOLDS
ELEVATION: 2425 GL	FORMATION: FT SCOTT
SECTION : 30	TOWNSHIP : 16S
RANGE : 22W COUNTY: NESS	STATE : KS
GAUGE SN#: 10270 RANGE : 4150	CLOCK : 12

WELL INFORMATION

PERFORATION INTERVAL FROM: 4300.00 ft	TO: 4337.00 ft	TVD: 4337.0 ft
DEPTH OF SELECTIVE ZONE:		TEST TYPE: OIL
DEPTH OF RECORDERS: 4304.0 ft	4307.0 ft	
TEMPERATURE: 122.0		
DRILL COLLAR LENGTH: 480.0 ft	I.D.: 2.200 in	
WEIGHT PIPE LENGTH : 0.0 ft	I.D.: 0.000 in	
DRILL PIPE LENGTH : 3793.0 ft	I.D.: 3.800 in	
TEST TOOL LENGTH : 27.0 ft	TOOL SIZE : 5.500 in	
ANCHOR LENGTH : 37.0 ft	ANCHOR SIZE: 5.500 in	
SURFACE CHOKE SIZE : 0.750 in	BOTTOM CHOKE SIZE: 0.750 in	
MAIN HOLE SIZE : 7.875 in	TOOL JOINT SIZE : 4.5XH	
PACKER DEPTH: 4295.0 ft	SIZE: 6.630 in	
PACKER DEPTH: 4300.0 ft	SIZE: 6.630 in	
PACKER DEPTH: 0.0 ft	SIZE: 0.000 in	
PACKER DEPTH: 0.0 ft	SIZE: 0.000 in	

MUD INFORMATION

DRILLING CON. : MURFIN DRLG RIG 2	VISCOSITY : 47.00 cp
MUD TYPE : CHEMICAL	WATER LOSS: 9.600 cc
WEIGHT : 9.300 ppg	
CHLORIDES : 4000 ppm	SERIAL NUMBER: 422
JARS-MAKE : WTC	REVERSED OUT?: NO
DID WELL FLOW?: NO	

COMMENTS

Comment

INITIAL FLOW PERIOD WEAK BLOW THROUGHOUT - 1/2 TO 1 1/2 INCH BLOW. FINAL FLOW PERIOD WEAK BLOW THROUGHOUT - 1 1/2 INCH TO 2 INCH BLOW.

DST REPORT (CONTINUED)

FLUID RECOVERY

Feet of Fluid	% Oil	% Gas	% Water	% Mud	Comments
10.0	15.0	0.0	0.0	85.0	OIL CUT MUD
60.0	32.0	11.0	0.0	57.0	HEAVY OIL & GAS CUT MUD
60.0	25.0	5.0	20.0	50.0	HEAVY OIL & GAS CUT MUD
0.0	0.0	0.0	0.0	0.0	CHLORIDES 5000 PPM

RATE INFORMATION

OIL VOLUME:	0.1678 STB				
GAS VOLUME:	0.2534 SCF				
MUD VOLUME:	0.3418 STB				
WATER VOLUME:	0.0564 STB				
TOTAL FLUID :	0.5660 STB				
				TOTAL FLOW TIME:	105.0000 min.
				AVERAGE OIL RATE:	6.1295 STB/D
				AVERAGE WATER RATE:	1.6334 STB/D

FIELD TIME & PRESSURE INFORMATION

INITIAL HYDROSTATIC PRESSURE: 2191.00

Description	Duration	p1	p End
INITIAL FLOW	45.00	41.00	62.00
INITIAL SHUT-IN	45.00		1070.00
FINAL FLOW	60.00	83.00	93.00
FINAL SHUT-IN	60.00		1049.00

FINAL HYDROSTATIC PRESSURE: 2118.00

OFFICE TIME & PRESSURE INFORMATION

INITIAL HYDROSTATIC PRESSURE: 2226.00

Description	Duration	p1	p End
INITIAL FLOW	45.00	63.00	72.00
INITIAL SHUT-IN	48.00		1077.00
FINAL FLOW	60.00	97.00	104.00
FINAL SHUT-IN	66.00		1066.00

FINAL HYDROSTATIC PRESSURE: 2140.00

PRESSURE TRANSIENT REPORT

GENERAL INFORMATION

DATE	: 10/17/93	TICKET	: 20081
CUSTOMER	: REYNOLDS REXWINKLE OIL	LEASE	: BATT
WELL	: #1	TEST:	1
ELEVATION:	2425 GL	GEOLOGIST:	REYNOLDS
SECTION	: 30	FORMATION:	FT SCOTT
RANGE	: 22W	TOWNSHIP	: 16S
GAUGE SN#:	10270	STATE	: KS
		CLOCK	: 12
		COUNTY:	NESS
		RANGE	: 4150

INITIAL FLOW

<u>Time (min)</u>	<u>Pressure</u>	<u>Delta P</u>
0.00	63.00	63.00
5.00	63.00	0.00
10.00	63.00	0.00
15.00	64.00	1.00
20.00	65.00	1.00
25.00	67.00	2.00
30.00	69.00	2.00
35.00	70.00	1.00
40.00	71.00	1.00
45.00	72.00	1.00

INITIAL SHUT IN

<u>Time (min)</u>	<u>Pressure</u>	<u>Delta P</u>	<u>Horner T</u>
3.00	78.00	78.00	0.00
6.00	87.00	9.00	0.00
9.00	107.00	20.00	0.00
12.00	147.00	40.00	0.00
15.00	237.00	90.00	0.00
18.00	377.00	140.00	0.00
21.00	530.00	153.00	0.00
24.00	674.00	144.00	0.00
27.00	784.00	110.00	0.00
30.00	869.00	85.00	0.00
33.00	934.00	65.00	0.00
36.00	979.00	45.00	0.00
39.00	1011.00	32.00	0.00
42.00	1039.00	28.00	0.00
45.00	1060.00	21.00	0.00
48.00	1077.00	17.00	0.00

PRESSURE TRANSIENT REPORT (CONTINUED)

FINAL FLOW

<u>Time (min)</u>	<u>Pressure</u>	<u>Delta P</u>
0.00	97.00	97.00
5.00	97.00	0.00
10.00	97.00	0.00
15.00	98.00	1.00
20.00	98.00	0.00
25.00	99.00	1.00
30.00	100.00	1.00
35.00	100.00	0.00
40.00	101.00	1.00
45.00	102.00	1.00
50.00	102.00	0.00
55.00	103.00	1.00
60.00	104.00	1.00

FINAL SHUT IN

<u>Time (min)</u>	<u>Pressure</u>	<u>Delta P</u>	<u>Horner T</u>
3.00	107.00	107.00	0.00
6.00	121.00	14.00	0.00
9.00	150.00	29.00	0.00
12.00	206.00	56.00	0.00
15.00	294.00	88.00	0.00
18.00	420.00	126.00	0.00
21.00	547.00	127.00	0.00
24.00	655.00	108.00	0.00
27.00	736.00	81.00	0.00
30.00	803.00	67.00	0.00
33.00	857.00	54.00	0.00
36.00	895.00	38.00	0.00
39.00	928.00	33.00	0.00
42.00	952.00	24.00	0.00
45.00	975.00	23.00	0.00
48.00	995.00	20.00	0.00
51.00	1012.00	17.00	0.00
54.00	1027.00	15.00	0.00
57.00	1040.00	13.00	0.00
60.00	1052.00	12.00	0.00
63.00	1061.00	9.00	0.00
66.00	1066.00	5.00	0.00



WESTERN TESTING CO., INC.
FORMATION TESTING

TICKET No 20082

P. O. BOX 1599 PHONE (316) 262-5861
WICHITA, KANSAS 67201

Elevation 2425 Formation Choc. 5d. Eff. Pay Ft.

District GREAT Bend Date 10-18-93 Customer Order No.

COMPANY NAME Reynolds-Rexwinkle Oil, Inc.

ADDRESS 212 N. MARKET #402 WICHITA, Ks 67202

LEASE AND WELL NO. BATT #1 COUNTY Ness STATE Ks Sec. 30 Twp 16^s Rge 22^w

Mail Invoice To SAME Co. Name Address No. Copies Requested Reg

Mail Charts To SAME Co. Name Address No. Copies Requested Reg

Formation Test No. 2 Interval Tested From 4341 ft. to 4352 ft. Total Depth 4352 ft.

Packer Depth 4336 ft. Size 6 7/8 in. Packer Depth ft. Size in.

Packer Depth 4341 ft. Size 6 7/8 in. Packer Depth ft. Size in.

Depth of Selective Zone Set

Top Recorder Depth (Inside) 4344 ft. Recorder Number 10270 Cap. 4150

Bottom Recorder Depth (Outside) 4347 ft. Recorder Number 13550 Cap. 4175

Below Straddle Recorder Depth ft. Recorder Number Cap.

Drilling Contractor MURFIN drlg rig 2 Drill Collar Length 480 I. D. 2.2 in.

Mud Type CHEMICAL Viscosity 48 Weight Pipe Length I. D. in.

Weight 9.2 Water Loss 9.6 cc. Drill Pipe Length 3834 I. D. 3.8 in.

Chlorides 4000 P.P.M. Test Tool Length 27 ft. Tool Size 5 1/2 in.

Jars: Make WTC Serial Number 422 Anchor Length 11 ft. Size 5 1/2 in.

Did Well Flow? Reversed Out Surface Choke Size 3/4 in. Bottom Choke Size 3/4 in.

Main Hole Size 7/8 in. Tool Joint Size 4 1/2 XH in.

Blow: IF-Urgy WEAR Blow died in 25 min.

Recovered 5 ft. of Mud w/show of oil

Recovered ft. of

Recovered ft. of

Recovered ft. of

Recovered ft. of

Chlorides P.P.M. Sample Jars used 1 Remarks:

Time On Location 12:00 A.M. Time Pick Up Tool 3:45 P.M. Time Off Location A.M.

Time Set Packer(s) 5:35 P.M. Time Started Off Bottom 6:35 P.M. Maximum Temperature 118'

Initial Hydrostatic Pressure (A) 2191 P.S.I.

Initial Flow Period Minutes 30 (B) 31 P.S.I. to (C) 31 P.S.I.

Initial Closed In Period Minutes 30 (D) 31 P.S.I.

Final Flow Period Minutes (E) P.S.I. to (F) P.S.I.

Final Closed In Period Minutes (G) P.S.I.

Final Hydrostatic Pressure (H) 2160 P.S.I.

COMPANY TERMS

Western Testing Co., Inc. shall not be liable for damages of any kind to the property or personnel of the one for whom a test is made or for any loss suffered or sustained directly or indirectly through the use of its equipment, of its statements or opinion concerning the results of any test. Tools lost or damaged in the hole shall be paid at cost by the party for whom the test is made.

All charges subject to 12% interest after 60 days from date of invoice. Any expense incurred for collection will be added to the original amount.

Test Approved By [Signature]
Signature of Customer or his authorized representative

Western Representative Ray Schwager THANK YOU

FIELD INVOICE

Open Hole Test	\$	
Misrun	\$	
Straddle Test	\$	
Jars	\$	
Selective Zone	\$	
Safety Joint	\$	
Standby	\$	
Evaluation	\$	
Extra Packer	\$	
Circ. Sub.	\$	
Mileage	\$	
Fluid Sampler	\$	
Extra Charts	\$	
Insurance	\$	
Telecopier	\$	
TOTAL	\$	

WESTERN TESTING CO., INC.
Pressure Data

Date 10-18-94

Test Ticket No. 2082

Recorder No. 10270 Capacity _____ Location _____ Ft.

Clock No. _____ Elevation _____ Well Temperature _____ °F

Point	Pressure		Time Given	Time Computed
A Initial Hydrostatic Mud	<u>2191</u> P.S.I.	Open Tool		<u>M</u>
B First Initial Flow Pressure	_____ P.S.I.	First Flow Pressure	_____ Mins.	_____ Mins.
C First Final Flow Pressure	_____ P.S.I.	Initial Closed-in Pressure	_____ Mins.	_____ Mins.
D Initial Closed-in Pressure	_____ P.S.I.	Second Flow Pressure	_____ Mins.	_____ Mins.
E Second Initial Flow Pressure	_____ P.S.I.	Final Closed-in Pressure	_____ Mins.	_____ Mins.
F Second Final Flow Pressure	_____ P.S.I.			
G Final Closed-in Pressure	_____ P.S.I.			
H Final Hydrostatic Mud	<u>2154</u> P.S.I.			

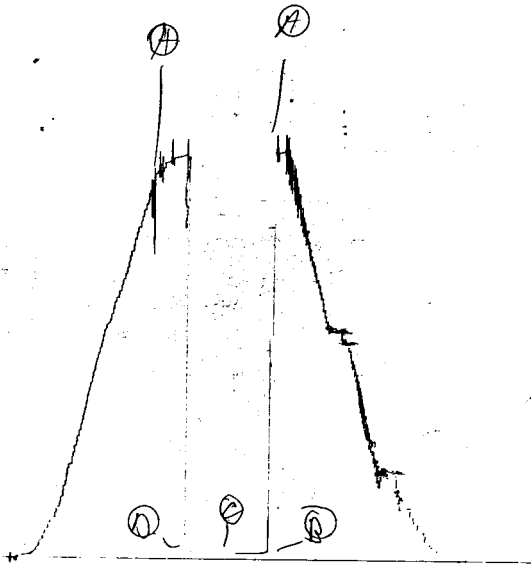
PRESSURE BREAKDOWN

Point Mins.	First Flow Pressure	Initial Shut-In	Second Flow Pressure	Final Shut-In	
	Breakdown: _____ Inc. of <u>5</u> mins. and a final inc. of <u>0</u> Min.	Breakdown: _____ Inc. of <u>3</u> mins. and a final inc. of <u>0</u> Min.	Breakdown: _____ Inc. of <u>5</u> mins. and a final inc. of <u>0</u> Min.	Breakdown: _____ Inc. of <u>3</u> mins. and a final inc. of <u>0</u> Min.	
	Press.	Point Minutes	Press.	Point Minutes	Press.
P 1	<u>35</u>	0	<u>35</u>	0	
P 2		3		3	
P 3		6		6	
P 4		9		9	
P 5		12		12	
P 6		15		15	
P 7	<u>35</u>	18		18	
P 8		21		21	
P 9		24		24	
P10		27	<u>35</u>	27	
P11		30		30	
P12		33		33	
P13		36		36	
P14		39		39	
P15		42		42	
P16		45		45	
P17		48		48	
P18		51		51	
P19		54		54	
P20		57		57	
		60		60	

KT JWS

7

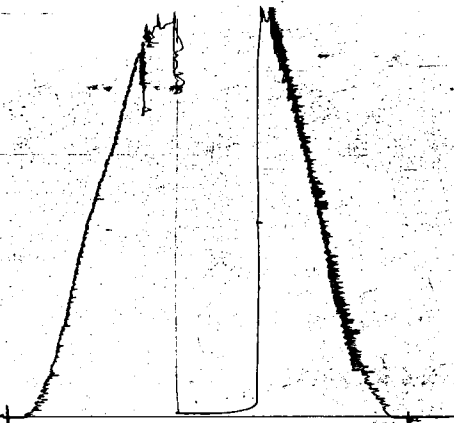
OST #2
1/2/22



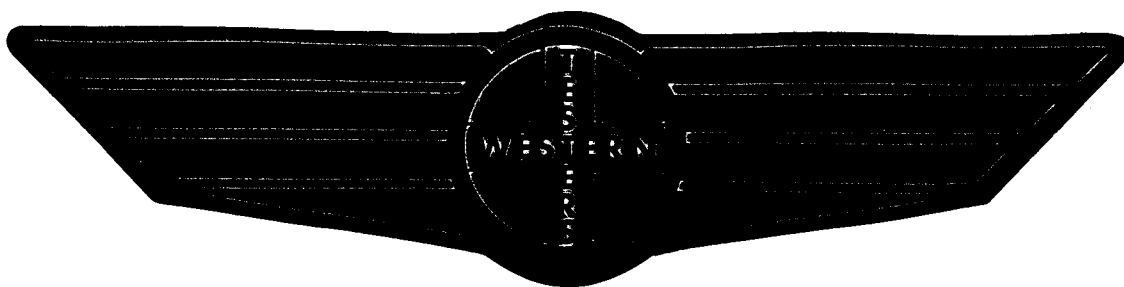
KT 20082

0

25TH 2
1978



FORMATION TEST REPORT



Home Office:

Wichita, Kansas 67201

P.O. Box 1599

Phone 1 - 80 - 688 - 7021

COMPANY REYNOLDS-REXWINKLE OIL INC LEASE & WELL NO. #1 BATT SEC. 30 TWP. 16S RGE. 22W TEST NO. 2 DATE 10/18/93

DST REPORT

GENERAL INFORMATION

DATE : 10/18/93
CUSTOMER : REYNOLDS REXWINKLE OIL
WELL : #1 TEST: 2
ELEVATION: 2425 GL
SECTION : 30
RANGE : 22W COUNTY: NESS
GAUGE SN#: 10270 RANGE : 4150
TICKET : 20082
LEASE : BATT
GEOLOGIST: REYNOLDS
FORMATION: CHEROKEE SAND
TOWNSHIP : 16S
STATE : KS
CLOCK : 12

WELL INFORMATION

PERFORATION INTERVAL FROM: 4341.00 ft TO: 4352.00 ft TVD: 4352.0 ft
DEPTH OF SELECTIVE ZONE: TEST TYPE: OIL
DEPTH OF RECORDERS: 4344.0 ft 4347.0 ft
TEMPERATURE: 118.0
DRILL COLLAR LENGTH: 480.0 ft I.D.: 2.200 in
WEIGHT PIPE LENGTH : 0.0 ft I.D.: 0.000 in
DRILL PIPE LENGTH : 3834.0 ft I.D.: 3.800 in
TEST TOOL LENGTH : 27.0 ft TOOL SIZE : 5.500 in
ANCHOR LENGTH : 11.0 ft ANCHOR SIZE: 5.500 in
SURFACE CHOKE SIZE : 0.750 in BOTTOM CHOKE SIZE: 0.750 in
MAIN HOLE SIZE : 7.875 in TOOL JOINT SIZE : 4.5XH
PACKER DEPTH: 4336.0 ft SIZE: 6.630 in
PACKER DEPTH: 4341.0 ft SIZE: 6.630 in
PACKER DEPTH: 0.0 ft SIZE: 0.000 in
PACKER DEPTH: 0.0 ft SIZE: 0.000 in

MUD INFORMATION

DRILLING CON. : MURFIN DRLG RIG 2
MUD TYPE : CHEMICAL VISCOSITY : 48.00 cp
WEIGHT : 9.200 ppg WATER LOSS: 9.600 cc
CHLORIDES : 4000 ppm
JARS-MAKE : WTC SERIAL NUMBER: 422
DID WELL FLOW?: NO REVERSED OUT?: NO

COMMENTS

Comment

INITIAL FLOW PERIOD VERY WEAK BLOW DIED IN 25 MINUTES.

DST REPORT (CONTINUED)

FLUID RECOVERY

Feet of Fluid	% Oil	% Gas	% Water	% Mud	Comments
5.0	0.0	0.0	0.0	100.0	MUD W/SHOW OF OIL

RATE INFORMATION

OIL VOLUME: 0.0000 STB	TOTAL FLOW TIME: 30.0000 min.
GAS VOLUME: 0.0000 SCF	AVERAGE OIL RATE: 0.0000 STB/D
MUD VOLUME: 0.0235 STB	AVERAGE WATER RATE: 0.0000 STB/D
WATER VOLUME: 0.0000 STB	
TOTAL FLUID : 0.0235 STB	

FIELD TIME & PRESSURE INFORMATION

INITIAL HYDROSTATIC PRESSURE: 2191.00

Description	Duration	p1	p End
INITIAL FLOW	30.00	31.00	31.00
INITIAL SHUT-IN	30.00		31.00
FINAL FLOW	0.00	0.00	0.00
FINAL SHUT-IN	0.00		0.00

FINAL HYDROSTATIC PRESSURE: 2160.00

OFFICE TIME & PRESSURE INFORMATION

INITIAL HYDROSTATIC PRESSURE: 2191.00

Description	Duration	p1	p End
INITIAL FLOW	30.00	35.00	35.00
INITIAL SHUT-IN	27.00		35.00
FINAL FLOW	0.00	0.00	0.00

FINAL HYDROSTATIC PRESSURE: 2156.00

PRESSURE TRANSIENT REPORT

GENERAL INFORMATION

DATE : 10/18/93	TICKET : 20082
CUSTOMER : REYNOLDS REXWINKLE OIL	LEASE : BATT
WELL : #1 TEST: 2	GEOLOGIST: REYNOLDS
ELEVATION: 2425 GL	FORMATION: CHEROKEE SAND
SECTION : 30	TOWNSHIP : 16S
RANGE : 22W COUNTY: NESS	STATE : KS
GAUGE SN#: 10270 RANGE : 4150	CLOCK : 12

INITIAL FLOW

<u>Time (min)</u>	<u>Pressure</u>	<u>Delta P</u>
0.00	35.00	35.00
5.00	35.00	0.00
10.00	35.00	0.00
15.00	35.00	0.00
20.00	35.00	0.00
25.00	35.00	0.00
30.00	35.00	0.00

INITIAL SHUT IN

<u>Time (min)</u>	<u>Pressure</u>	<u>Delta P</u>	<u>Horner T</u>
3.00	35.00	35.00	0.00
6.00	35.00	0.00	0.00
9.00	35.00	0.00	0.00
12.00	35.00	0.00	0.00
15.00	35.00	0.00	0.00
18.00	35.00	0.00	0.00
21.00	35.00	0.00	0.00
24.00	35.00	0.00	0.00
27.00	35.00	0.00	0.00

FINAL FLOW

<u>Time (min)</u>	<u>Pressure</u>	<u>Delta P</u>
0.00	0.00	0.00

PRESSURE TRANSIENT REPORT (CONTINUED)

FINAL SHUT IN

Time
(min)

Pressure

Delta P

Horner T

No Data Entered



WESTERN TESTING CO., INC.
FORMATION TESTING

TICKET No 20083

P. O. BOX 1599 WICHITA, KANSAS 67201
PHONE (316) 262-5861

Elevation 2425 GL Formation Congl Eff. Pay - Ft.

District Great Bend Date 10-18-93 Customer Order No. -

COMPANY NAME Reynolds-Axwinke Oil, Inc.

ADDRESS 212 N. MARKET #402 WICHITA, KS 67202

LEASE AND WELL NO. BATT #1 COUNTY Ness STATE KS Sec. 30 Twp. 16 Rge. 22

Mail Invoice To Same Co. Name Address No. Copies Requested Reg

Mail Charts To Same Address No. Copies Requested Reg

Formation Test No. 3 Interval Tested From 4368 ft. to 4422 ft. Total Depth 4422 ft.

Packer Depth 4363 ft. Size 6 5/8 in. Packer Depth - ft. Size - in.

Packer Depth 4368 ft. Size 6 5/8 in. Packer Depth - ft. Size - in.

Depth of Selective Zone Set -

Top Recorder Depth (Inside) 4371 ft. Recorder Number 10220 Cap. 4150

Bottom Recorder Depth (Outside) 4374 ft. Recorder Number 13550 Cap. 4175

Below Straddle Recorder Depth - ft. Recorder Number - Cap. -

Drilling Contractor Murfin del rig 2 Drill Collar Length 480 I. D. 2.2 in.

Mud Type Chemical Viscosity 59 Weight Pipe Length - I. D. - in.

Weight 9.3 Water Loss 8 cc. Drill Pipe Length 3861 I. D. 3.8 in.

Chlorides 4000 P.P.M. Test Tool Length 27 ft. Tool Size 5 1/2 in.

Jars: Make WTC Serial Number 422 Anchor Length 54 ft. Size 5 1/2 in.

Did Well Flow? - Reversed Out - Surface Choke Size 3/4 in. Bottom Choke Size 3/4 in.

Main Hole Size 7/8 in. Tool Joint Size 4 1/2 XH in.

Blow: IF - Strong Blow in 1 min FF - Strong Blow throughout

Recovered 120 ft. of GAS in Pipe

Recovered 1040 ft. of CLEAN OIL GRAVITY 40 J 61°

Recovered 550 ft. of Muddy gassy oil 75% oil 10% gas 15% mud

Recovered 120 ft. of Muddy gassy oil 70% oil 10% gas 20% mud

Recovered - ft. of -

Chlorides: P.P.M. Sample Jars used 5 Remarks:

Time On Location 12:00 P.M. Time Pick Up Tool 6:15 P.M. Time Off Location - P.M.

Time Set Packer(s) 8:30 P.M. Time Started Off Bottom 10:45 P.M. Maximum Temperature 132°

Initial Hydrostatic Pressure (A) 2202 P.S.I.

Initial Flow Period Minutes 30 (B) 177 P.S.I. to (C) 406 P.S.I.

Initial Closed In Period Minutes 30 (D) 1257 P.S.I.

Final Flow Period Minutes 30 (E) 499 P.S.I. to (F) 634 P.S.I.

Final Closed In Period Minutes 45 (G) 1257 P.S.I.

Final Hydrostatic Pressure (H) 2149 P.S.I.

COMPANY TERMS

Western Testing Co., Inc. shall not be liable for damages of any kind to the property or personnel of the one for whom a test is made or for any loss suffered or sustained directly or indirectly through the use of its equipment, of its statements or opinion concerning the results of any test. Tools lost or damaged in the hole shall be paid at cost by the party for whom the test is made.

All charges subject to 12% interest after 60 days from date of invoice. Any expense incurred for collection will be added to the original amount.

Test Approved By [Signature] Signature of Customer or his authorized representative

Western Representative Ray Schwager Thank you

FIELD INVOICE

Table with 2 columns: Item Name and Amount. Items include Open Hole Test, Misrun, Straddle Test, Jars, Selective Zone, Safety Joint, Standby, Evaluation, Extra Packer, Circ. Sub., Mileage, Fluid Sampler, Extra Charts, Insurance, Telecopier, and TOTAL.

WESTERN TESTING CO., INC.
Pressure Data

Date 10-18-92 Test Ticket No. 20082

Recorder No. 10270 Capacity _____ Location _____ Ft.

Clock No. _____ Elevation _____ Well Temperature _____ °F

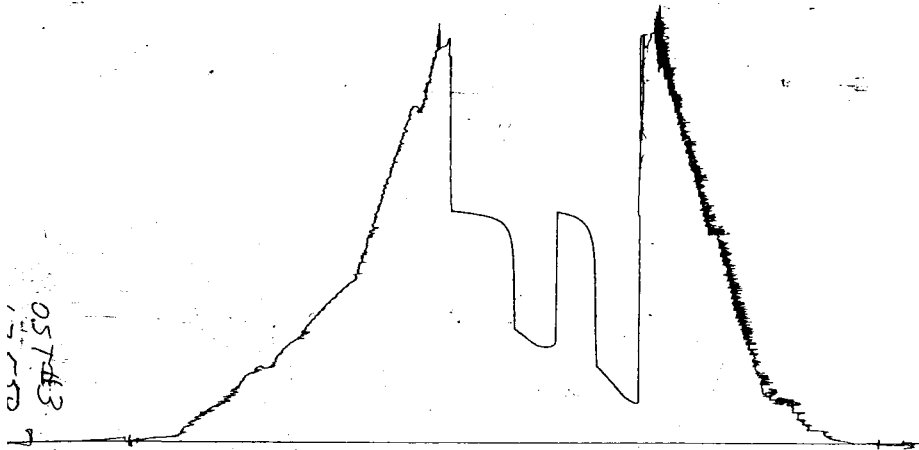
Point	Pressure	Open Tool	Time Given	Time Computed
A Initial Hydrostatic Mud	<u>2228</u> P.S.I.	_____ M	_____	_____
B First Initial Flow Pressure	_____ P.S.I.	First Flow Pressure	_____ Mins.	_____ Mins.
C First Final Flow Pressure	_____ P.S.I.	Initial Closed-in Pressure	_____ Mins.	_____ Mins.
D Initial Closed-in Pressure	_____ P.S.I.	Second Flow Pressure	_____ Mins.	_____ Mins.
E Second Initial Flow Pressure	_____ P.S.I.	Final Closed-in Pressure	_____ Mins.	_____ Mins.
F Second Final Flow Pressure	_____ P.S.I.			
G Final Closed-in Pressure	_____ P.S.I.			
H Final Hydrostatic Mud	<u>2214</u> P.S.I.			

PRESSURE BREAKDOWN

Point Mins.	First Flow Pressure	Initial Shut-In	Second Flow Pressure	Final Shut-In			
	Breakdown: _____ Inc. of <u>5</u> mins. and a final inc. of <u>0</u> Min.	Breakdown: _____ Inc. of <u>3</u> mins. and a final inc. of <u>0</u> Min.	Breakdown: _____ Inc. of <u>5</u> mins. and a final inc. of <u>0</u> Min.	Breakdown: _____ Inc. of <u>3</u> mins. and a final inc. of <u>0</u> Min.			
	Press.	Point Minutes	Press.	Point Minutes	Press.	Point Minutes	Press.
P 1	<u>191</u>	<u>0</u>	<u>420</u>	<u>0</u>	<u>520</u>	<u>0</u>	<u>655</u>
P 2	<u>241</u>	<u>3</u>	<u>1138</u>	<u>5</u>	<u>523</u>	<u>3</u>	<u>1135</u>
P 3	<u>264</u>	<u>6</u>	<u>1190</u>	<u>10</u>	<u>536</u>	<u>6</u>	<u>1103</u>
P 4	<u>298</u>	<u>9</u>	<u>1119</u>	<u>15</u>	<u>555</u>	<u>9</u>	<u>1122</u>
P 5	<u>351</u>	<u>12</u>	<u>1227</u>	<u>20</u>	<u>584</u>	<u>12</u>	<u>1133</u>
P 6	<u>380</u>	<u>15</u>	<u>1245</u>	<u>25</u>	<u>612</u>	<u>15</u>	<u>1240</u>
P 7	<u>414</u>	<u>18</u>	<u>1252</u>	<u>30</u>	<u>655</u>	<u>18</u>	<u>1245</u>
P 8	<u>430</u>	<u>21</u>	<u>1257</u>	<u>35</u>		<u>21</u>	<u>1252</u>
P 9		<u>24</u>	<u>1263</u>	<u>40</u>		<u>24</u>	<u>1256</u>
P10		<u>27</u>	<u>1268</u>	<u>45</u>		<u>27</u>	<u>1261</u>
P11		<u>30</u>	<u>1270</u>	<u>50</u>		<u>30</u>	<u>1263</u>
P12		<u>33</u>		<u>55</u>		<u>33</u>	<u>1265</u>
P13		<u>36</u>		<u>60</u>		<u>36</u>	<u>1269</u>
P14		<u>39</u>		<u>65</u>		<u>39</u>	<u>1270</u>
P15		<u>42</u>		<u>70</u>		<u>42</u>	<u>1273</u>
P16		<u>45</u>		<u>75</u>		<u>45</u>	<u>1276</u>
P17		<u>48</u>		<u>80</u>		<u>48</u>	
P18		<u>51</u>		<u>85</u>		<u>51</u>	
P19		<u>54</u>		<u>90</u>		<u>54</u>	
P20		<u>57</u>		<u>95</u>		<u>57</u>	
		<u>60</u>		<u>100</u>		<u>60</u>	

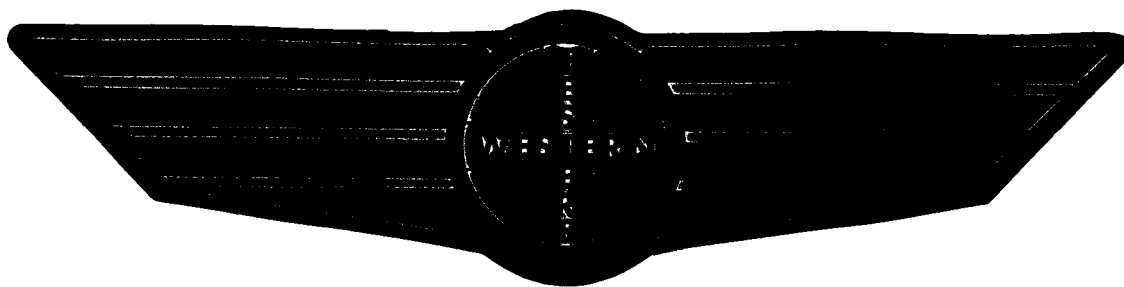
DKT 20082

0



05743

FORMATION TEST REPORT



Home Office:

Wichita, Kansas 67201

P.O. Box 1599

Phone **1 - 80 - 688 - 7021**

COMPANY REYNOLDS-REXINKIE OIL INC LEASE & WELL NO.

#1 BATT

SEC. 30

TWP. 16S

RGE. 22W

TEST NO. 3

DATE

10/18/93

DST REPORT

GENERAL INFORMATION

DATE	: 10/18/93	TICKET	: 20083
CUSTOMER	: REYNOLDS REXWINKLE OIL	LEASE	: BATT
WELL	: #1 TEST: 3	GEOLOGIST	: REYNOLDS
ELEVATION	: 2425 GL	FORMATION	: CONGLOMERATE
SECTION	: 30	TOWNSHIP	: 16S
RANGE	: 22W COUNTY: NESS	STATE	: KS
GAUGE SN#	: 10270 RANGE : 4150	CLOCK	: 12

WELL INFORMATION

PERFORATION INTERVAL FROM:	4368.00 ft	TO:	4422.00 ft	TVD:	4422.0 ft
DEPTH OF SELECTIVE ZONE:				TEST TYPE:	OIL
DEPTH OF RECORDERS:	4371.0 ft		4374.0 ft		
TEMPERATURE:	132.0				
DRILL COLLAR LENGTH:	480.0 ft	I.D.:		2.200 in	
WEIGHT PIPE LENGTH :	0.0 ft	I.D.:		0.000 in	
DRILL PIPE LENGTH :	3861.0 ft	I.D.:		3.800 in	
TEST TOOL LENGTH :	27.0 ft	TOOL SIZE :		5.500 in	
ANCHOR LENGTH :	54.0 ft	ANCHOR SIZE:		5.500 in	
SURFACE CHOKE SIZE :	0.750 in	BOTTOM CHOKE SIZE:		0.750 in	
MAIN HOLE SIZE :	7.875 in	TOOL JOINT SIZE :		4.5XH	
PACKER DEPTH:	4363.0 ft	SIZE:		6.630 in	
PACKER DEPTH:	4368.0 ft	SIZE:		6.630 in	
PACKER DEPTH:	0.0 ft	SIZE:		0.000 in	
PACKER DEPTH:	0.0 ft	SIZE:		0.000 in	

MUD INFORMATION

DRILLING CON. :	MURFIN DRLG RIG 2	VISCOSITY :	59.00 cp
MUD TYPE :	CHEMICAL	WATER LOSS:	8.000 cc
WEIGHT :	9.300 ppg	SERIAL NUMBER:	422
CHLORIDES :	4000 ppm	REVERSED OUT?:	NO
JARS-MAKE :	WTC		
DID WELL FLOW?:	NO		

COMMENTS

Comment

INITIAL FLOW PERIOD STRONG BLOW IN 1 MINUTE.
FINAL FLOW PERIOD STRONG BLOW THROUGHOUT.

DST REPORT (CONTINUED)

FLUID RECOVERY

Feet of Fluid	% Oil	% Gas	% Water	% Mud	Comments
0.0	0.0	0.0	0.0	0.0	120 FT GAS ABOVE FLUID
1040.0	100.0	0.0	0.0	0.0	CLEAN OIL
0.0	0.0	0.0	0.0	0.0	GRAVITY 40 @ 61 DEGREES
550.0	75.0	10.0	0.0	15.0	MUDDY GASSY OIL
120.0	70.0	10.0	0.0	20.0	MUDDY GASSY OIL

RATE INFORMATION

OIL VOLUME:	18.2504 STB	TOTAL FLOW TIME:	65.0000 min.
GAS VOLUME:	2.7635 SCF	AVERAGE OIL RATE:	421.2975 STB/D
MUD VOLUME:	0.7665 STB	AVERAGE WATER RATE:	0.0000 STB/D
WATER VOLUME:	0.0000 STB		
TOTAL FLUID :	19.0169 STB		

FIELD TIME & PRESSURE INFORMATION

INITIAL HYDROSTATIC PRESSURE: 2202.00

Description	Duration	p1	p End
INITIAL FLOW	30.00	177.00	406.00
INITIAL SHUT-IN	30.00		1257.00
FINAL FLOW	30.00	499.00	634.00
FINAL SHUT-IN	45.00		1257.00

FINAL HYDROSTATIC PRESSURE: 2148.00

OFFICE TIME & PRESSURE INFORMATION

INITIAL HYDROSTATIC PRESSURE: 2228.00

Description	Duration	p1	p End
INITIAL FLOW	35.00	191.00	430.00
INITIAL SHUT-IN	30.00		1270.00
FINAL FLOW	30.00	523.00	655.00
FINAL SHUT-IN	45.00		1276.00

FINAL HYDROSTATIC PRESSURE: 2214.00

PRESSURE TRANSIENT REPORT

GENERAL INFORMATION

DATE	: 10/18/93	TICKET	: 20083
CUSTOMER	: REYNOLDS REXWINKLE OIL	LEASE	: BATT
WELL	: #1	TEST:	3
ELEVATION:	2425 GL	GEOLOGIST:	REYNOLDS
SECTION	: 30	FORMATION:	CONGLOMERATE
RANGE	: 22W	TOWNSHIP	: 16S
GAUGE SN#:	10270	STATE	: KS
		CLOCK	: 12
		COUNTY:	NESS
		RANGE	: 4150

INITIAL FLOW

<u>Time (min)</u>	<u>Pressure</u>	<u>Delta P</u>
0.00	191.00	191.00
5.00	241.00	50.00
10.00	264.00	23.00
15.00	298.00	34.00
20.00	351.00	53.00
25.00	380.00	29.00
30.00	424.00	44.00
35.00	430.00	6.00

INITIAL SHUT IN

<u>Time (min)</u>	<u>Pressure</u>	<u>Delta P</u>	<u>Horner T</u>
3.00	1138.00	1138.00	0.00
6.00	1190.00	52.00	0.00
9.00	1219.00	29.00	0.00
12.00	1237.00	18.00	0.00
15.00	1245.00	8.00	0.00
18.00	1252.00	7.00	0.00
21.00	1257.00	5.00	0.00
24.00	1263.00	6.00	0.00
27.00	1268.00	5.00	0.00
30.00	1270.00	2.00	0.00

FINAL FLOW

<u>Time (min)</u>	<u>Pressure</u>	<u>Delta P</u>
-----------------------	-----------------	----------------

PRESSURE TRANSIENT REPORT (CONTINUED)

FINAL FLOW (CONTINUED)

<u>Time (min)</u>	<u>Pressure</u>	<u>Delta P</u>
0.00	523.00	523.00
5.00	523.00	0.00
10.00	536.00	13.00
15.00	555.00	19.00
20.00	584.00	29.00
25.00	613.00	29.00
30.00	655.00	42.00

FINAL SHUT IN

<u>Time (min)</u>	<u>Pressure</u>	<u>Delta P</u>	<u>Horner T</u>
3.00	1135.00	1135.00	0.00
6.00	1203.00	68.00	0.00
9.00	1222.00	19.00	0.00
12.00	1233.00	11.00	0.00
15.00	1240.00	7.00	0.00
18.00	1245.00	5.00	0.00
21.00	1252.00	7.00	0.00
24.00	1256.00	4.00	0.00
27.00	1261.00	5.00	0.00
30.00	1263.00	2.00	0.00
33.00	1265.00	2.00	0.00
36.00	1267.00	2.00	0.00
39.00	1270.00	3.00	0.00
42.00	1273.00	3.00	0.00
45.00	1276.00	3.00	0.00



WESTERN TESTING CO., INC.

FORMATION TESTING

TICKET No 20084

P. O. BOX 1599 WICHITA, KANSAS 67201 PHONE (316) 262-5861

Elevation 2425 GL Formation Congl sd. Eff. Pay Ft.

District GREAT Bend Date 10-19-93 Customer Order No.

COMPANY NAME Reynolds-Rexwinkle Oil TAC

ADDRESS 212 N. MARKET #402 WICHITA, KS 67202

LEASE AND WELL NO. BATT #1 COUNTY NESS STATE KS Secs 30 Twp 16 Rge 22

Mail Invoice To SAME Co. Name Address No. Copies Requested Reg

Mail Charts To SAME Co. Name Address No. Copies Requested Reg

Formation Test No. 4 Interval Tested From 4421 ft. to 4432 ft. Total Depth 4432 ft.

Packer Depth 4421 ft. Size 6 5/8 in. Packer Depth ft. Size in.

Packer Depth ft. Size in. Packer Depth ft. Size in.

Depth of Selective Zone Set

Top Recorder Depth (Inside) 4424 ft. Recorder Number 10270 Cap. 4150

Bottom Recorder Depth (Outside) 4427 ft. Recorder Number 13550 Cap. 4175

Below Straddle Recorder Depth ft. Recorder Number Cap.

Drilling Contractor MURFIN DRG RIG 2 Drill Collar Length 480 I. D. 2.2 in.

Mud Type CHEMICAL Viscosity 50 Weight Pipe Length I. D. in.

Weight 9.2 Water Loss 7.2 cc. Drill Pipe Length 3919 I. D. 3.8 in.

Chlorides 5000 P.P.M. Test Tool Length 22 ft. Tool Size 5 1/2 in.

Jars: Make WTC Serial Number 422 Anchor Length 16 ft. Size 5 1/2 in.

Did Well Flow? Reversed Out YES Surface Choke Size 3/4 in. Bottom Choke Size 3/4 in.

Main Hole Size 7/8 in. Tool Joint Size 4 1/2 X 4 in.

Blow IF-STRONG Blow throughout

Recovered 1130 ft. of CLEAN OIL GRAVITY 40 at 61

Recovered ft. of

Recovered ft. of

Recovered ft. of

Recovered ft. of

Chlorides P.P.M. Sample Jars used 2 Remarks:

Time On Location 12:00 P.M. Time Pick Up Tool 11:30 P.M. Time Off Location P.M.

Time Set Packer(s) 1:35 P.M. Time Started Off Bottom 1:45 P.M. Maximum Temperature

Initial Hydrostatic Pressure (A) 2202 P.S.I.

Initial Flow Period Minutes 10 (B) 322 P.S.I. to (C) 437 P.S.I.

Initial Closed In Period Minutes (D) P.S.I.

Final Flow Period Minutes (E) P.S.I. to (F) P.S.I.

Final Closed In Period Minutes (G) P.S.I.

Final Hydrostatic Pressure (H) 2149 P.S.I.

COMPANY TERMS

Western Testing Co., Inc. shall not be liable for damages of any kind to the property or personnel of the one for whom a test is made or for any loss suffered or sustained directly or indirectly through the use of its equipment, of its statements or opinion concerning the results of any test. Tools lost or damaged in the hole shall be paid at cost by the party for whom the test is made.

All charges subject to 12% interest after 60 days from date of invoice. Any expense incurred for collection will be added to the original amount.

Test Approved By Signature of Customer or his authorized representative

Western Representative Ray Schwager Thank you

FIELD INVOICE

- Open Hole Test \$
Misrun \$
Straddle Test \$
Jars \$
Selective Zone \$
Safety Joint \$
Standby \$
Evaluation \$
Extra Packer \$
Circ. Sub. \$
Mileage \$
Fluid Sampler \$
Extra Charts \$
Insurance \$
Telecopier \$
TOTAL \$

WESTERN TESTING CO., INC.
Pressure Data

Date 10-19-82 Test Ticket No. 20084
 Recorder No. 10220 Capacity _____ Location _____ Ft.
 Clock No. _____ Elevation _____ Well Temperature _____ °F

Point	Pressure	Open Tool	Time Given	Time Computed
A Initial Hydrostatic Mud	<u>2130</u> P.S.I.	_____	_____	_____ M
B First Initial Flow Pressure	_____ P.S.I.	First Flow Pressure	_____ Mins.	_____ Mins.
C First Final Flow Pressure	_____ P.S.I.	Initial Closed-in Pressure	_____ Mins.	_____ Mins.
D Initial Closed-in Pressure	_____ P.S.I.	Second Flow Pressure	_____ Mins.	_____ Mins.
E Second Initial Flow Pressure	_____ P.S.I.	Final Closed-in Pressure	_____ Mins.	_____ Mins.
F Second Final Flow Pressure	_____ P.S.I.			
G Final Closed-in Pressure	_____ P.S.I.			
H Final Hydrostatic Mud	<u>2179</u> P.S.I.			

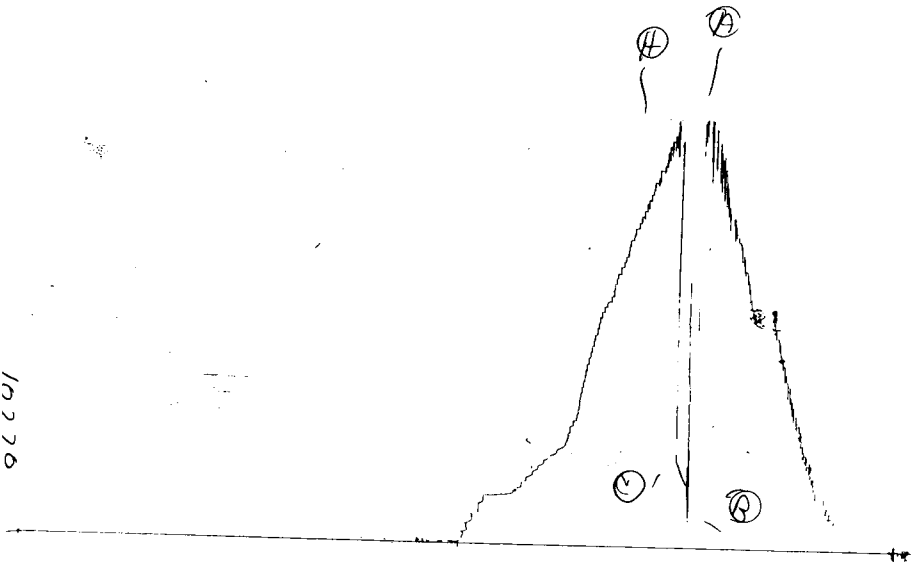
PRESSURE BREAKDOWN

First Flow Pressure		Initial Shut-In		Second Flow Pressure		Final Shut-In	
Breakdown: _____ Inc.		Breakdown: _____ Inc.		Breakdown: _____ Inc.		Breakdown: _____ Inc.	
of <u>5</u> mins. and a		of <u>3</u> mins. and a		of <u>5</u> mins. and a		of <u>3</u> mins. and a	
final inc. of <u>0</u> Min.		final inc. of <u>0</u> Min.		final inc. of <u>0</u> Min.		final inc. of <u>0</u> Min.	
Point Mins.	Press.	Point Minutes	Press.	Point Minutes	Press.	Point Minutes	Press.
P 1 0	<u>2210</u>	0	_____	0	_____	0	_____
P 2 5	<u>2172</u>	3	_____	5	_____	3	_____
P 3 10	<u>2103</u>	6	_____	10	_____	6	_____
P 4 15	_____	9	_____	15	_____	9	_____
P 5 20	_____	12	_____	20	_____	12	_____
P 6 25	_____	15	_____	25	_____	15	_____
P 7 30	_____	18	_____	30	_____	18	_____
P 8 35	_____	21	_____	35	_____	21	_____
P 9 40	_____	24	_____	40	_____	24	_____
P10 45	_____	27	_____	45	_____	27	_____
P11 50	_____	30	_____	50	_____	30	_____
P12 55	_____	33	_____	55	_____	33	_____
P13 60	_____	36	_____	60	_____	36	_____
P14 65	_____	39	_____	65	_____	39	_____
P15 70	_____	42	_____	70	_____	42	_____
P16 75	_____	45	_____	75	_____	45	_____
P17 80	_____	48	_____	80	_____	48	_____
P18 85	_____	51	_____	85	_____	51	_____
P19 90	_____	54	_____	90	_____	54	_____
P20 95	_____	57	_____	95	_____	57	_____
100	_____	60	_____	100	_____	60	_____

JKT 20084

7

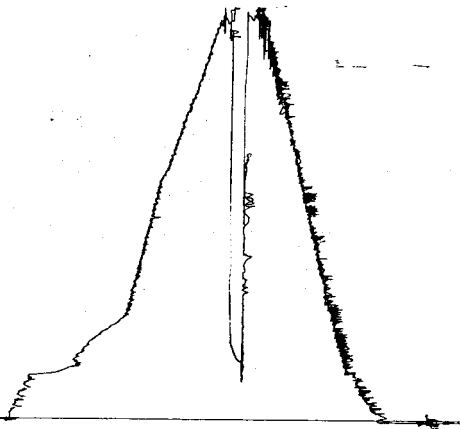
10276



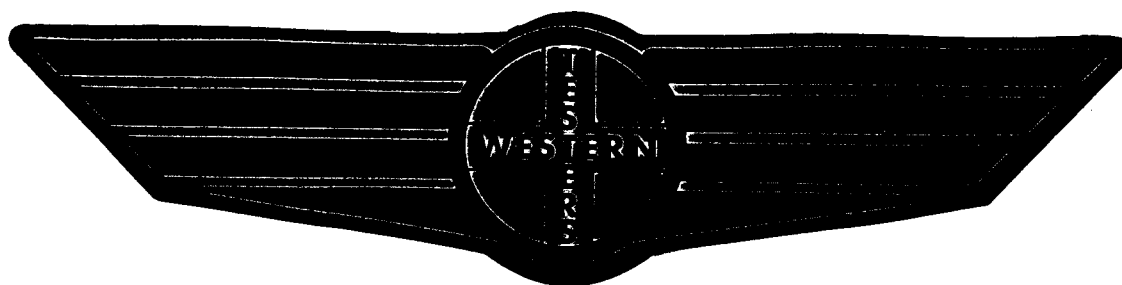
KT 2008'4

0

12550



FORMATION TEST REPORT



Home Office:

Wichita, Kansas 67201

P.O. Box 1599

Phone **1 - 80 - 688 - 7021**

COMPANY REYNOLDS-REXWINKLE OIL INC LEASE & WELL NO. #1 BATT SEC. 30 TWP. 16S RGE. 22W TEST NO. 4 DATE 10/19/93

DST REPORT

GENERAL INFORMATION

DATE : 10/19/93
CUSTOMER : REYNOLDS REXWINKLE OIL
WELL : #1 TEST: 4
ELEVATION: 2425 GL
SECTION : 30
RANGE : 22W COUNTY: NESS
GAUGE SN#: 10270 RANGE : 4150
TICKET : 20084
LEASE : BATT
GEOLOGIST: REYNOLDS
FORMATION: CONGLOMERATE SAND
TOWNSHIP : 16S
STATE : KS
CLOCK : 12

WELL INFORMATION

PERFORATION INTERVAL FROM: 4421.00 ft TO: 4432.00 ft TVD: 4432.0 ft
DEPTH OF SELECTIVE ZONE: TEST TYPE: OIL
DEPTH OF RECORDERS: 4424.0 ft 4427.0 ft
TEMPERATURE: 0.0
DRILL COLLAR LENGTH: 480.0 ft I.D.: 2.200 in
WEIGHT PIPE LENGTH : 0.0 ft I.D.: 0.000 in
DRILL PIPE LENGTH : 3919.0 ft I.D.: 3.800 in
TEST TOOL LENGTH : 22.0 ft TOOL SIZE : 5.500 in
ANCHOR LENGTH : 11.0 ft ANCHOR SIZE: 5.500 in
SURFACE CHOKE SIZE : 0.750 in BOTTOM CHOKE SIZE: 0.750 in
MAIN HOLE SIZE : 7.875 in TOOL JOINT SIZE : 4.5XH
PACKER DEPTH: 4421.0 ft SIZE: 6.630 in
PACKER DEPTH: 0.0 ft SIZE: 0.000 in
PACKER DEPTH: 0.0 ft SIZE: 0.000 in
PACKER DEPTH: 0.0 ft SIZE: 0.000 in

MUD INFORMATION

DRILLING CON. : MURFIN DRLG RIG 2
MUD TYPE : CHEMICAL VISCOSITY : 50.00 cp
WEIGHT : 9.200 ppg WATER LOSS: 7.200 cc
CHLORIDES : 5000 ppm
JARS-MAKE : WTC SERIAL NUMBER: 422
DID WELL FLOW?: NO REVERSED OUT?: YES

COMMENTS

Comment

INITIAL FLOW PERIOD STRONG BLOW THROUGHOUT.

DST REPORT (CONTINUED)

FLUID RECOVERY

Feet of Fluid	% Oil	% Gas	% Water	% Mud	Comments
1130.0	100.0	0.0	0.0	0.0	CLEAN OIL
0.0	0.0	0.0	0.0	0.0	GRAVITY 40 @ 61 DEGREES

RATE INFORMATION

OIL VOLUME:	11.3738	STB	TOTAL FLOW TIME:	10.0000	min.
GAS VOLUME:	0.0000	SCF	AVERAGE OIL RATE:	1637.8245	STB/D
MUD VOLUME:	0.0000	STB	AVERAGE WATER RATE:	0.0000	STB/D
WATER VOLUME:	0.0000	STB			
TOTAL FLUID :	11.3738	STB			

FIELD TIME & PRESSURE INFORMATION

INITIAL HYDROSTATIC PRESSURE: 2202.00

Description	Duration	p1	p End
INITIAL FLOW	10.00	322.00	437.00
INITIAL SHUT-IN	0.00		0.00
FINAL FLOW	0.00	0.00	0.00
FINAL SHUT-IN	0.00		0.00

FINAL HYDROSTATIC PRESSURE: 2149.00

OFFICE TIME & PRESSURE INFORMATION

INITIAL HYDROSTATIC PRESSURE: 2230.00

Description	Duration	p1	p End
INITIAL FLOW	10.00	326.00	463.00
INITIAL SHUT-IN	0.00		0.00

FINAL HYDROSTATIC PRESSURE: 2179.00

PRESSURE TRANSIENT REPORT

GENERAL INFORMATION

DATE : 10/19/93	TICKET : 20084
CUSTOMER : REYNOLDS REXWINKLE OIL	LEASE : BATT
WELL : #1	TEST: 4
ELEVATION: 2425 GL	GEOLOGIST: REYNOLDS
SECTION : 30	FORMATION: CONGLOMERATE SAND
RANGE : 22W	TOWNSHIP : 16S
COUNTY: NESS	STATE : KS
RANGE : 4150	CLOCK : 12
GAUGE SN#: 10270	

INITIAL FLOW

<u>Time (min)</u>	<u>Pressure</u>	<u>Delta P</u>
0.00	326.00	326.00
5.00	372.00	46.00
10.00	463.00	91.00

INITIAL SHUT IN

<u>Time (min)</u>	<u>Pressure</u>	<u>Delta P</u>	<u>Horner T</u>
-----------------------	-----------------	----------------	-----------------

FINAL FLOW

<u>Time (min)</u>	<u>Pressure</u>	<u>Delta P</u>
0.00	0.00	0.00

FINAL SHUT IN

<u>Time (min)</u>	<u>Pressure</u>	<u>Delta P</u>	<u>Horner T</u>
			No Data Entered