

CHENEY TESTING COMPANY, INC.

P. O. Box 367

HILL CITY, KANSAS 67642

DRILL-STEM TEST DATA

Company Oil Capital Corporation	Test No. 1
Well Name & Number James A #2	Zone Tested Pawnee
Company Address Farmers & Bankder Bldg., Suite 520, Wichita	Date 11-20-85
Company Rep. Glenn D. Tracy	Tester Dell Hartwell
Contractor H-30 Drilling, Inc.	Elevation 2751
Location: Sec. 24 Twp. 16s Rge. 29w Co. Lane State Ks.	Est. Feet of Pay

Recorder No. 10983 Type AK-1 Range 4100 PSI
 Recorder Depth 4367 Clock # 25829
 (A) Initial Hydrostatic Mud 2288 PSI
 (B) First Initial Flow Pressure 40 PSI
 (C) First Final Flow Pressure 40 PSI
 (D) Initial Shut-in Pressure 1125 PSI
 (E) Second Initial Flow Pressure 51 PSI
 (F) Second Final Flow Pressure 61 PSI
 (G) Final Shut-in Pressure 889 PSI
 (H) Final Hydrostatic Mud 2257 PSI
 Temperature 113^o
 Mud Weight 9.0 Viscosity 42
 Fluid Loss 10.4
 Interval Tested 4358-4375
 Anchor Length 17
 Top Packer Depth 4353
 Bottom Packer Depth 4358
 Total Depth 4375
 Drill Pipe Size 4 1/2" XH
 Wt. Pipe I. D. - Ft. Run. -
 Recovery-Total Feet 30

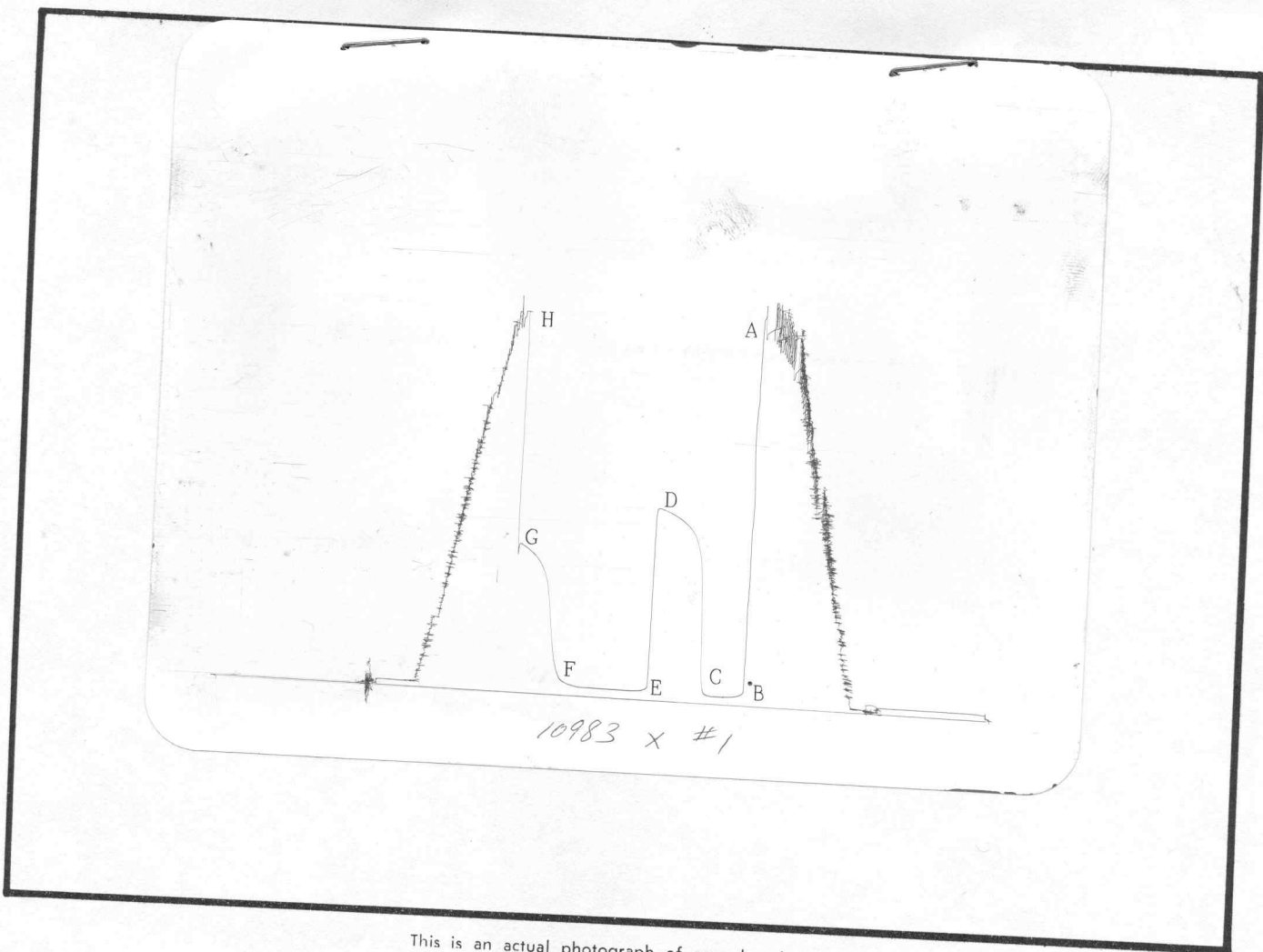
Recorder No. 13277 Type AK-1 Range 4125 PSI
 Recorder Depth 4370 Clock # 31276
 Tool Open Before I.S.I. 30 Mins.
 Initial Shut-in 45 Mins.
 Flow Period 60 Mins.
 Final Shut-in 60 Mins.
 Top Choke Size 1" Hole Size 7 7/8"
 Bottom Choke Size 3/4" Rubber Size 6 3/4"
 Tool Open @ 5:10 A.M.

Blow Remarks
 1st Open: Weak Blow, Building to 2".
 2nd Open: Weak Blow, Building to 1".

Mud Chlorides: 5,000 PPM
 Recovery Chlorides: 5,000 PPM

Recovered 30 Feet Of Heavy Oil spotted Mud (Less than 1% Oil)
 Recovered _____ Feet Of _____
 Recovered _____ Feet Of _____
 Recovered _____ Feet Of _____
 Recovered _____ Feet Of _____
 Recovered _____ Feet Of _____

Extra Equipment _____ Price of Job 625.00



This is an actual photograph of recorder chart.

POINT	PRESSURE		PSI
	Field Reading	Office Reading	
(A) Initial Hydrostatic Mud	2288		PSI
(B) First Initial Flow Pressure	40		PSI
(C) First Final Flow Pressure	40		PSI
(D) Initial Closed-in Pressure	1125		PSI
(E) Second Initial Flow Pressure	51		PSI
(F) Second Final Flow Pressure	61		PSI
(G) Final Closed-in Pressure	889		PSI
(H) Final Hydrostatic Mud	2257		PSI

CHENEY TESTING COMPANY, INC.

P. O. Box 367

HILL CITY, KANSAS 67642

DRILL-STEM TEST DATA

Company <u>Oil Capital Corporation</u>	Test No. <u>2</u>
Well Name & Number <u>James A-#2</u>	Zone Tested <u>Fort Scott</u>
Company Address <u>Farmers & Bankers Bldg., Suite 520, Wichita</u>	Date <u>11-21-85</u>
Company Rep. <u>Glenn D. Tracy</u>	Tester <u>Dell Hartwell</u>
Contractor <u>H-30 Drilling, Inc.</u>	Elevation <u>2751</u>
Location: Sec. <u>24</u> Twp. <u>16s</u> Rge. <u>29w</u> Co. <u> </u> Lane <u> </u> State <u>Ks.</u>	Est. Feet of Pay <u> </u>

Recorder No. 10983 Type AK-1 Range 4100 PSI

Recorder No. 13277 Type AK-1 Range 4125 PSI

Recorder Depth 4447 Clock # 25829

Recorder Depth 4450 Clock # 31206

(A) Initial Hydrostatic Mud 2452 PSI

Tool Open Before I.S.I. 30 Mins.

(B) First Initial Flow Pressure 30 PSI

Initial Shut-in 45 Mins.

(C) First Final Flow Pressure 30 PSI

Flow Period 60 Mins.

(D) Initial Shut-in Pressure 122 PSI

Final Shut-in 60 Mins.

(E) Second Initial Flow Pressure 40 PSI

Top Choke Size 1" Hole Size 7 7/8"

(F) Second Final Flow Pressure 40 PSI

Bottom Choke Size 3/4" Rubber Size 6 3/4"

(G) Final Shut-in Pressure 122 PSI

Tool Open @ 3:00 A.M.

(H) Final Hydrostatic Mud 2288 PSI

Blow Remarks

Temperature 114^o

1st Open: Fair Blow, Building to 8"

Mud Weight 9.2 Viscosity 58

2nd Open: Fair Blow, Building to 8"

Fluid Loss 16.4

Tool Slid 3' to Bottom When Opened.

Interval Tested 4415-4455

Anchor Length 40

Top Packer Depth 4410

Bottom Packer Depth 4415

Total Depth 4455

Drill Pipe Size 4 1/2" XH

Wt. Pipe I. D. - Ft. Run -

Recovery-Total Feet 20

Recovered 300 Feet Of Gas in Pipe

Recovered 20 Feet Of Oil Cut Mud (10% Gas/ 20% Oil/ 70% Mud)

Recovered Feet Of

Recovered Feet Of

Recovered Feet Of

Recovered Feet Of

Extra Equipment Price of Job 625.00

CHENEY TESTING CO, INC.
CALCULATION OF FORMATION CHARACTERISTICS
FROM DST DATA

FOR: OIL CAPITAL CORPORATION
JAMES A-#2
24-16S-29W
LANE COUNTY KANSAS
DST # 2
FORMATION: FORT SCOTT
ELEVATION: 2751 KB

TEST PARAMETERS

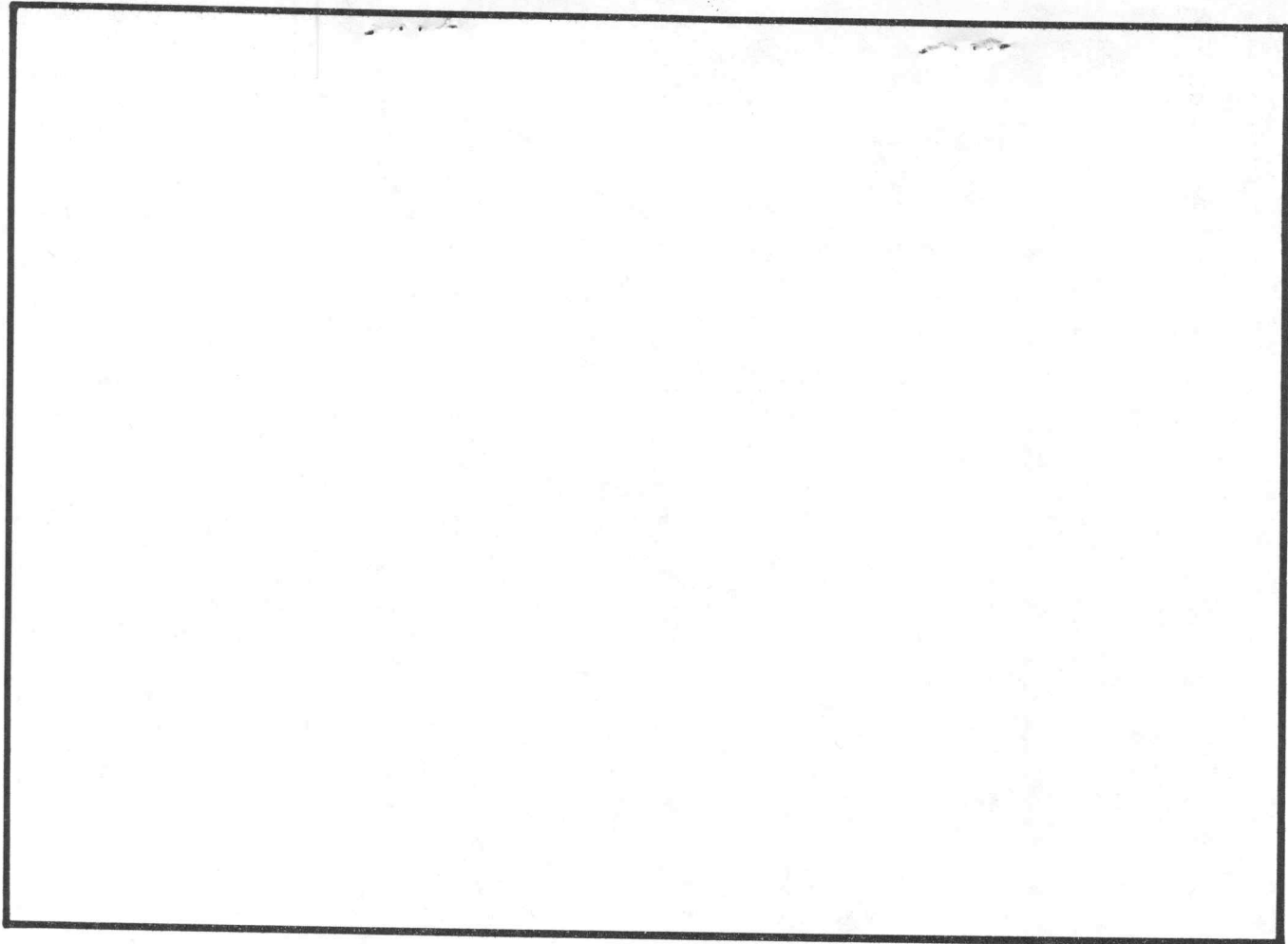
TEST INTERVAL: 4415 - 4455
TIME INTERVAL: 30 - 45 - 60 - 60
INITIAL FLOW PRESS: 43.1- 43.1
FINAL FLOW PRESS: 46.2- 46.2
SHUT-IN PRESS(I-F): 123.1- 144.6
BOTTOM HOLE TEMPERATURE: 114
TOTAL FEET OF RECOVERY: 20
EST PAY: 5
VISCOSITY OF FLUID: 2
HOLE SIZE: 7.875
D.C. CAPACITY:0.00000
W.P. CAPACITY:0.00000
D.P. CAPACITY:0.01402
TOTAL BARRELS RECOVERY: 0.2804

EXTRAPOLATED INITIAL SHUT-IN PRESSURE (PSI): 188
SLOPE (PSI-CYCLE): 288 POINTS USED: 5

EXTRAPOLATED FINAL SHUT-IN PRESSURE (PSI): 270
SLOPE (PSI-CYCLE): 318 POINTS USED: 5

CALCULATIONS

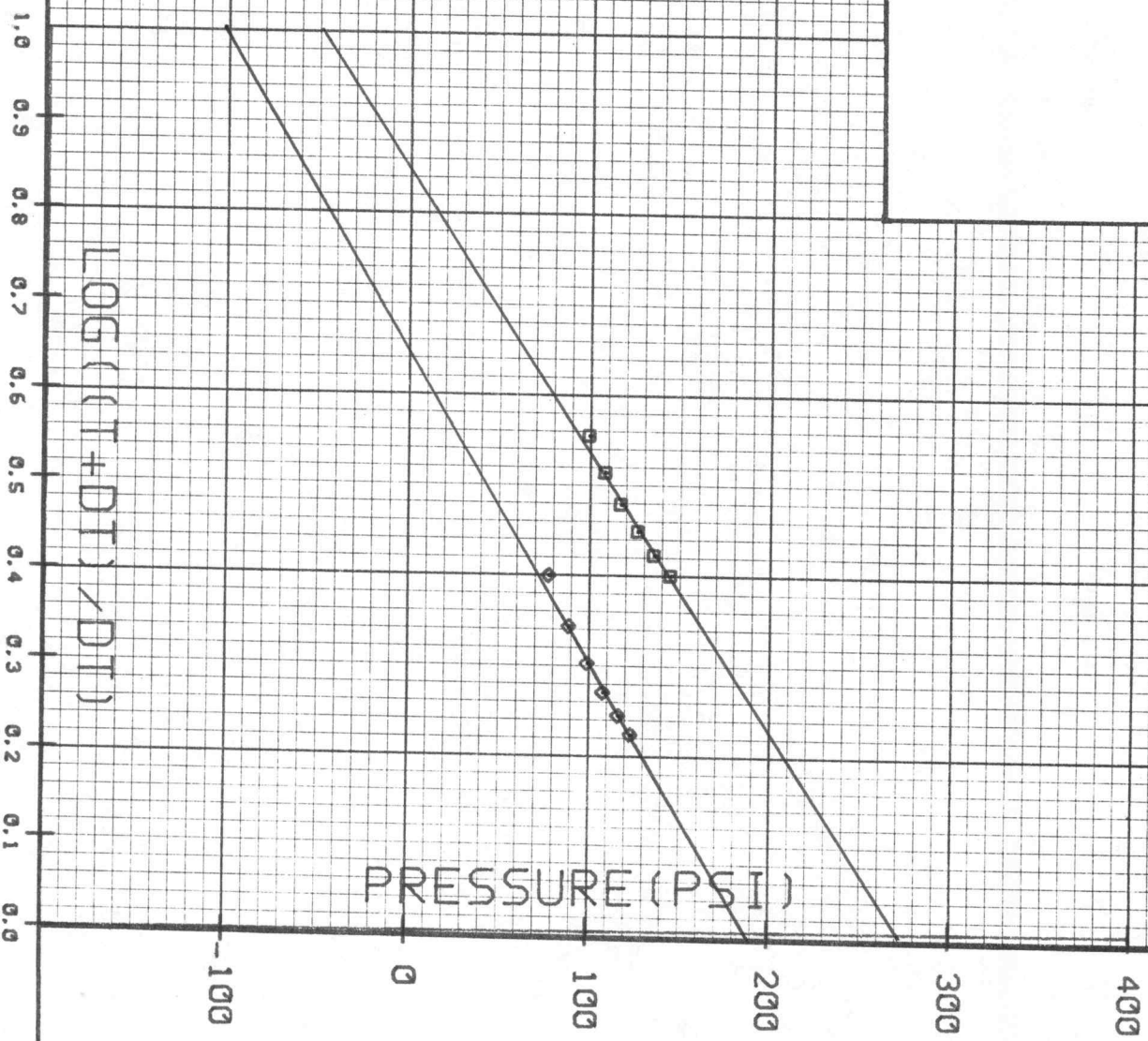
PRODUCTION POTENTIAL (B/D) : 4.49
TRANSMISSIBILITY (MD-FT/CP) : 2.29
EFFECTIVE PERMEABILITY (MD) : 0.92
PRODUCTIVITY INDEX (B/D/PSI) : 0.0026
DAMAGE RATIO : 0.129
APPROXIMATE RADIUS OF INVESTIGATION (FT) : 9.1
DRAWDOWN FACTOR (%) : %-43.617
POTENTIOMETRIC SURFACE (FT) : %-1077.87



This is an actual photograph of recorder chart.

POINT	PRESSURE		PSI
	Field Reading	Office Reading	
(A) Initial Hydrostatic Mud	2452	2447	PSI
(B) First Initial Flow Pressure	30	43.1	PSI
(C) First Final Flow Pressure	30	43.1	PSI
(D) Initial Closed-in Pressure	122	123.1	PSI
(E) Second Initial Flow Pressure	40	46.2	PSI
(F) Second Final Flow Pressure	40	46.2	PSI
(G) Final Closed-in Pressure	122	144.6	PSI
(H) Final Hydrostatic Mud	2288	2283	PSI

HORNER PLOT
 OIL CAPITAL CORPORATION
 JAMES A-#2
 DST # 2 DEPTH: 4455
 RECORDER NO. 10983
 INITIAL SHUT-IN: \diamond
 FINAL SHUT-IN: \square



INITIAL SHUT-IN

=====

RECORDER NO: 10983 DEPTH: 4455 FT.
 INITIAL FLOW TIME (T): 30 MIN.

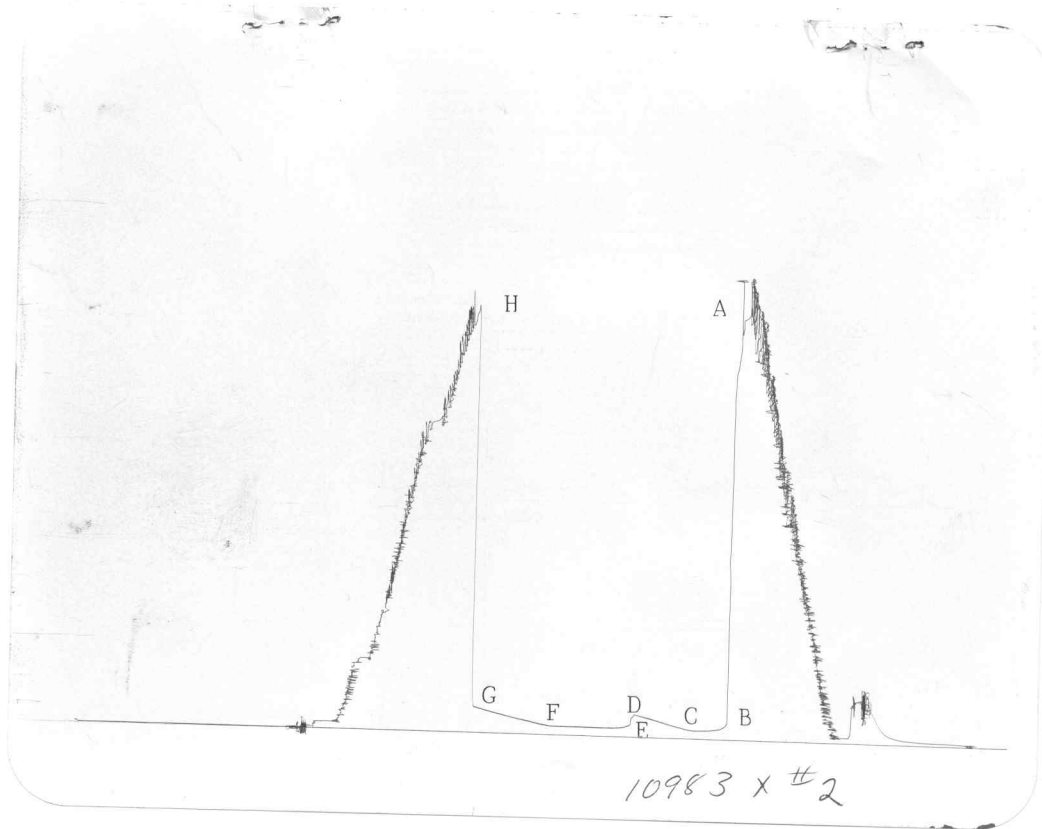
DT(MIN)	LOG((T+DT)/DT)	PRESSURE(PSIG)
0	0.000	43.1
5	0.845	48.2
10	0.602	56.4
15	0.477	64.6
20	0.398	76.9
25	0.342	88.2
30	0.301	98.5
35	0.269	107.7
40	0.243	115.9
45	0.222	123.1

FINAL SHUT-IN

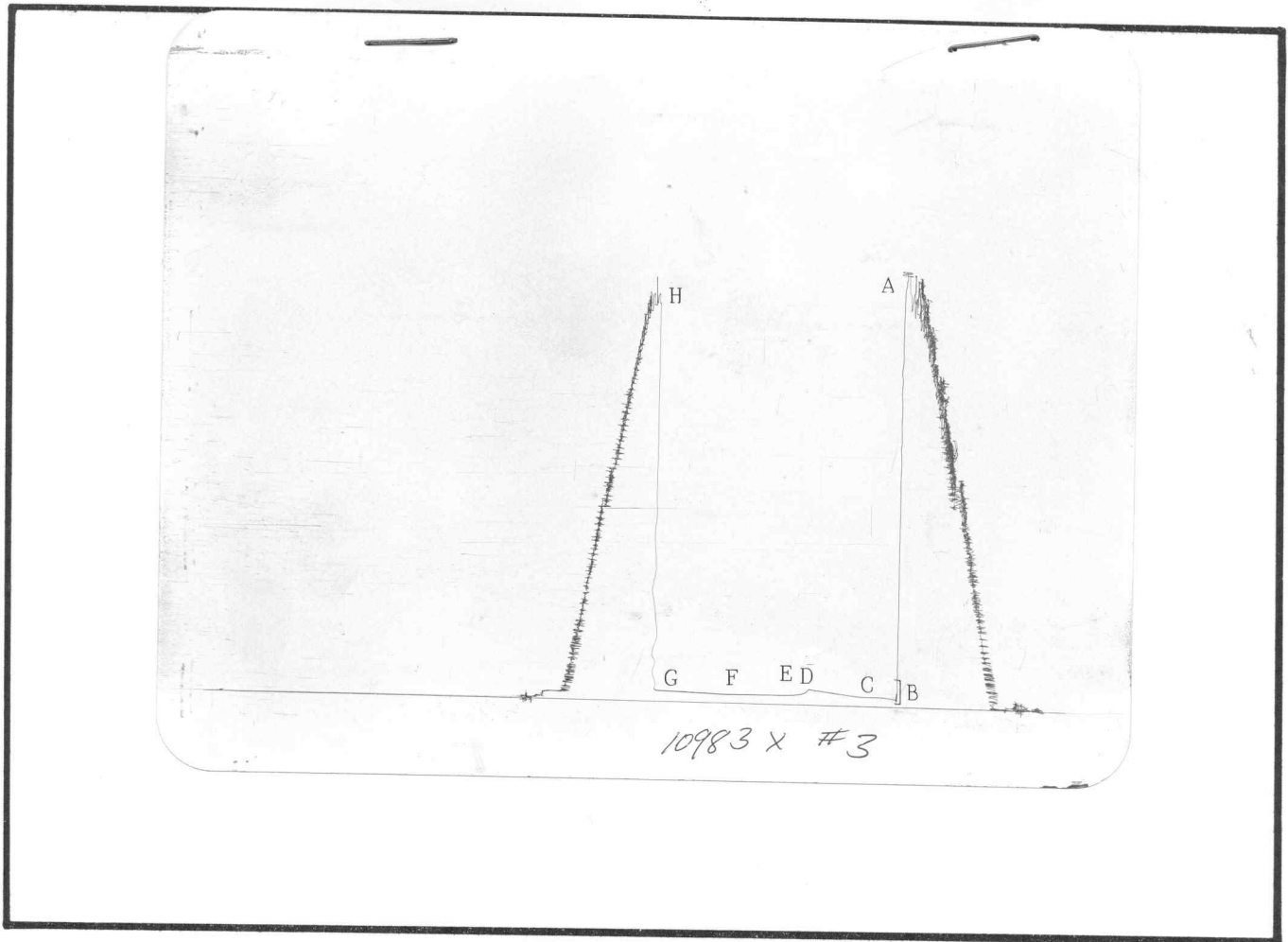
=====

RECORDER NO: 10983 DEPTH: 4455 FT.
 TOTAL FLOW TIME: 90 MIN.

DT(MIN)	LOG((T+DT)/DT)	PRESSURE(PSIG)
0	0.000	46.2
5	1.279	55.4
10	1.000	61.5
15	0.845	67.7
20	0.740	76.9
25	0.663	80.0
30	0.602	89.2
35	0.553	98.5
40	0.512	107.7
45	0.477	116.9
50	0.447	126.2
55	0.421	135.4
60	0.398	144.6



10983 x #2



This is an actual photograph of recorder chart.

POINT	PRESSURE		PSI
	Field Reading	Office Reading	
(A) Initial Hydrostatic Mud	2432		PSI
(B) First Initial Flow Pressure	51		PSI
(C) First Final Flow Pressure	51		PSI
(D) Initial Closed-in Pressure	91		PSI
(E) Second Initial Flow Pressure	40		PSI
(F) Second Final Flow Pressure	40		PSI
(G) Final Closed-in Pressure	51		PSI
(H) Final Hydrostatic Mud	2411		PSI

CHENEY TESTING COMPANY, INC.

P. O. Box 367 HILL CITY, KANSAS 67642

DRILL-STEM TEST DATA

Company <u>Oil Capital Corporation</u>	Test No. <u>3</u>
Well Name & Number <u>James A-#2</u>	Zone Tested <u>Cherokee</u>
Company Address <u>Farmers & BANKers Bldg., Suite 520, Wichita</u>	Date <u>11-22-85</u>
Company Rep. <u>Glenn Tracy</u>	Tester <u>Dell Hartwell</u>
Contractor <u>H-30 Drilling, Inc.</u>	Elevation <u>2751</u>
Location: Sec. <u>24</u> Twp. <u>16s</u> Rge. <u>29w</u> Co. <u>Lane</u> State <u>Ks.</u>	Est. Feet of Pay _____

Recorder No. 10983 Type AK-1 Range 4100 PSI
 Recorder Depth 4497 Clock # 25829

- (A) Initial Hydrostatic Mud 2432 PSI
- (B) First Initial Flow Pressure 51 PSI
- (C) First Final Flow Pressure 51 PSI
- (D) Initial Shut-in Pressure 91 PSI
- (E) Second Initial Flow Pressure 40 PSI
- (F) Second Final Flow Pressure 40 PSI
- (G) Final Shut-in Pressure 51 PSI
- (H) Final Hydrostatic Mud 2411 PSI

Temperature 114°

Mud Weight 9.1 Viscosity 62

Fluid Loss 11.8

Interval Tested 4454-4505

Anchor Length 51

Top Packer Depth 4449

Bottom Packer Depth 4454

Total Depth 4505

Drill Pipe Size 4½" XH

Wt. Pipe I. D. - Ft. Run -

Recovery-Total Feet 10

Recovered 10 Feet Of Oil Specked Mud

Recovered _____ Feet Of _____

Recovered _____ Feet Of _____

Recovered _____ Feet Of _____

Recovered _____ Feet Of _____

Recovered _____ Feet Of _____

Extra Equipment _____

Recorder No. 13277 Type AK-1 Range 4125 PSI

Recorder Depth 4500 Clock # 31206

Tool Open Before I.S.I. 30 Mins.

Initial Shut-in 45 Mins.

Flow Period 60 Mins.

Final Shut-in 60 Mins.

Top Choke Size 1" Hole Size 7 7/8"

Bottom Choke Size 3/4" Rubber Size 6 3/4"

Tool Open @ 2:05 A.M.

Blow Remarks _____

1st Open: Blow Built to 2"

2nd Open: Surface Blow, Throughout.

Price of Job 625.00

CHENEY TESTING COMPANY, INC.

P. O. Box 367

HILL CITY, KANSAS 67642

DRILL-STEM TEST DATA

Company Oil Capital Corporation	Test No. 4
Well Name & Number James A-#2	Zone Tested Johnson
Company Address Farmers & Bankers Bldg., Suite 520 Wichita, Ks.	Date 11-22-85
Company Rep. Glenn Tracy	Tester Dell Hartwell
Contractor H-30 Drilling, Inc.	Elevation 2751
Location: Sec. 24 Twp. 16s Rge. 29w Co. Lane State Ks.	Est. Feet of Pay

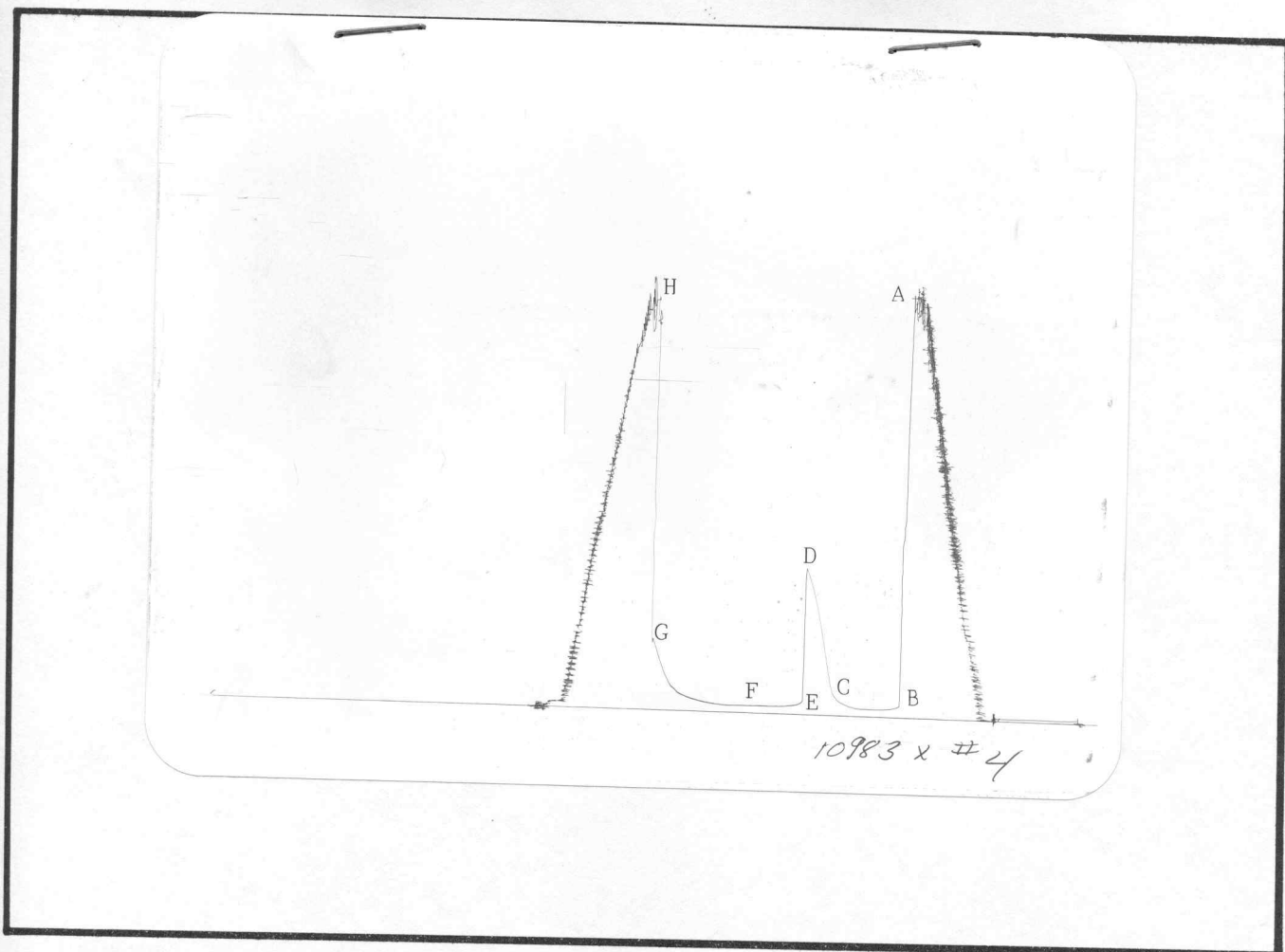
Recorder No. 10983 Type AK-1 Range 4100 PSI
 Recorder Depth 4510 Clock # 25829
 (A) Initial Hydrostatic Mud 2360 PSI
 (B) First Initial Flow Pressure 30 PSI
 (C) First Final Flow Pressure 30 PSI
 (D) Initial Shut-in Pressure 817 PSI
 (E) Second Initial Flow Pressure 30 PSI
 (F) Second Final Flow Pressure 30 PSI
 (G) Final Shut-in Pressure 377 PSI
 (H) Final Hydrostatic Mud 2308 PSI
 Temperature 114^o
 Mud Weight 9.5 Viscosity 64
 Fluid Loss 12.0
 Interval Tested 4502-4518
 Anchor Length 16
 Top Packer Depth 4497
 Bottom Packer Depth 4502
 Total Depth 4518
 Drill Pipe Size 4 1/2" XH
 Wt. Pipe I. D. - Ft. Run -
 Recovery-Total Feet 20

Recorder No. 13277 Type AK-1 Range 4125 PSI
 Recorder Depth 4513 Clock # 31206
 Tool Open Before I.S.I. 30 Mins.
 Initial Shut-in 45 Mins.
 Flow Period 60 Mins.
 Final Shut-in 60 Mins.
 Top Choke Size 1" Hole Size 7 7/8"
 Bottom Choke Size 3/4" Rubber Size 6 3/4"
 Tool Open @ 5:15 P.M.

Blow Remarks
 1st Open: Very Weak Blow, Building to 1/2"
 2nd Open: Surface Blow, Throughout.

Recovered 20 Feet Of Oil Spotted Mud (Less than 1% Oil)
 Recovered _____ Feet Of _____
 Recovered _____ Feet Of _____
 Recovered _____ Feet Of _____
 Recovered _____ Feet Of _____
 Recovered _____ Feet Of _____

Extra Equipment _____ Price of Job 625.00



This is an actual photograph of recorder chart.

POINT	PRESSURE		PSI
	Field Reading	Office Reading	
(A) Initial Hydrostatic Mud	2360		
(B) First Initial Flow Pressure	30		
(C) First Final Flow Pressure	30		
(D) Initial Closed-in Pressure	817		
(E) Second Initial Flow Pressure	30		
(F) Second Final Flow Pressure	30		
(G) Final Closed-in Pressure	377		
(H) Final Hydrostatic Mud	2308		