

DAVE LAPINSKY 403 263-0865

TERRY HERNDON

Computer Inventoried

ORIGINAL

CONFIDENTIAL

Qw

sperry-sun DRILLING SERVICES

A DRESSER INDUSTRIES, INC. COMPANY

RELEASED

APR 26 2000

**Buried Hills Production Company
Kansas**

FROM CONFIDENTIAL

Ness County

Sec. 32-T16S-R25W

Arnold SW Prospect-Maxx Lillie Lease - Complete Survey

SURVEY REPORT

30 July, 1997

Data Source: Information Provided by Bud 7/22/97

15-135-24017-0100

RECEIVED
KANSAS CORPORATION COMMISSION

SEP 03 1997

CONSERVATION DIVISION
WICHITA, KS

Survey Ref: svy1658

yes: 5

CONFIDENTIAL

ORIGINAL

SEP 03 1997

Sperry-Sun Drilling Services

Survey Report for Arnold SW Prospect-Maxx Lillie Lease - Complete Survey

Data Source: Information Provided by Bud 7/22/97

CONSERVATION DIVISION
WICHITA, KS

RELEASED

Buried Hills Production Company
Kansas

APR 26 2000

Ness County
Sec. 32-T16S-R25W

Measured Depth (ft)	Incl.	Azim.	Vertical Depth (ft)	FROM CONFIDENTIAL Northings (ft)	FROM CONFIDENTIAL Eastings (ft)	Vertical Section (ft)	Dogleg Rate (°/100ft)
0.00	0.000	0.000	0.00	0.00 N	0.00 E	0.00	
1223.90	1.200	40.700	1223.81	9.72 N	8.36 E	-12.78	0.098
1675.99	0.500	58.800	1675.85	14.33 N	13.13 E	-19.42	0.164
2128.09	1.000	142.200	2127.92	12.23 N	17.24 E	-20.84	0.236
2589.55	1.100	196.400	2589.31	4.80 N	18.45 E	-16.44	0.208
3065.05	0.400	156.200	3064.77	1.10 S	17.84 E	-11.84	0.176
3540.55	1.000	36.100	3540.25	0.74 N	20.95 E	-15.34	0.263
3890.00	0.400	347.300	3889.67	4.39 N	22.48 E	-19.00	0.228
3923.12	0.600	236.100	3922.79	4.41 N	22.31 E	-18.89	2.515
3954.72	2.800	260.000	3954.38	4.18 N	21.41 E	-18.10	7.166
3986.42	7.900	258.200	3985.93	3.60 N	18.52 E	-15.64	16.095
4018.01	11.300	264.400	4017.07	2.85 N	13.31 E	-11.43	11.234
4049.79	14.100	263.000	4048.07	2.08 N	6.37 E	-5.97	8.863
4081.51	19.400	269.700	4078.44	1.58 N	2.74 W	0.82	17.757
4113.28	23.300	268.900	4108.02	1.43 N	14.31 W	9.10	12.310
4145.00	27.700	267.200	4136.64	0.95 N	27.95 W	19.09	14.061
4176.77	31.200	269.200	4164.31	0.48 N	43.56 W	30.46	11.442
4208.40	34.700	266.900	4190.84	0.13 S	60.75 W	43.04	11.749
4240.19	38.400	264.100	4216.38	1.63 S	79.61 W	57.45	12.764
4271.83	41.600	262.000	4240.62	4.10 S	99.79 W	73.47	10.976
4303.54	44.800	261.000	4263.73	7.32 S	121.26 W	90.92	10.320
4335.38	47.800	259.100	4285.72	11.30 S	143.92 W	109.76	10.362
4367.08	50.900	258.100	4306.37	16.06 S	167.50 W	129.79	10.068
4398.68	53.100	256.300	4325.83	21.58 S	191.77 W	150.87	8.283
4430.39	55.000	253.800	4344.45	28.21 S	216.57 W	173.08	8.753
4462.09	57.500	254.400	4362.06	35.43 S	241.92 W	196.11	8.042
4493.53	60.700	254.200	4378.20	42.73 S	267.88 W	219.64	10.193
4525.58	63.100	253.300	4393.29	50.64 S	295.02 W	244.42	7.887
4557.23	65.700	253.000	4406.97	58.92 S	322.34 W	269.59	8.259
4589.02	69.200	252.300	4419.16	67.67 S	350.36 W	295.59	11.196
4620.77	70.000	252.600	4430.22	76.65 S	378.73 W	322.00	2.671
4652.46	70.600	251.900	4440.91	85.74 S	407.14 W	348.52	2.812
4684.18	71.600	252.500	4451.18	94.91 S	435.72 W	375.21	3.625
4716.10	72.300	251.300	4461.07	104.34 S	464.56 W	402.28	4.193
4747.93	74.100	251.100	4470.27	114.16 S	493.41 W	429.62	5.687
4779.61	75.600	252.500	4478.55	123.71 S	522.46 W	456.91	6.373
4811.35	76.200	251.900	4486.28	133.12 S	551.77 W	484.29	2.633
4842.96	77.500	252.600	4493.48	142.51 S	581.08 W	511.65	4.644
4874.69	79.900	253.200	4499.69	151.65 S	610.82 W	539.15	7.788
4906.00	82.300	253.500	4504.54	160.52 S	640.45 W	566.37	7.724
4991.43	85.300	255.700	4513.76	183.06 S	722.32 W	640.20	4.346
5022.99	85.300	255.800	4516.35	190.80 S	752.81 W	667.23	0.316
5054.67	86.200	256.200	4518.70	198.45 S	783.46 W	694.31	3.107
5086.48	89.500	256.200	4519.89	206.03 S	814.33 W	721.50	10.374
5118.23	93.000	255.400	4519.20	213.81 S	845.09 W	748.76	11.308

Continued...

CONFIDENTIAL**RECEIVED**
KANSAS CORPORATION COMMISSION**Sperry-Sun Drilling Services**

SEP 03 1997

Survey Report for Arnold SW Prospect-Maxx Lillie Lease - Complete Survey**Data Source: Information Provided by Bud 7/22/97**CONSERVATION DIVISION
WICHITA, KS**RELEASED****Buried Hills Production Company
Kansas**

APR 26 2000

**Ness County
Sec. 32-T16S-R25W**

				FROM CONFIDENTIAL			
Measured Depth (ft)	Incl.	Azim.	Vertical Depth (ft)	Northings (ft)	Eastings (ft)	Vertical Section (ft)	Dogleg Rate (°/100ft)
5150.01	93.400	255.900	4517.42	221.68 S	875.83 W	776.06	2.013
5181.67	94.400	255.300	4515.27	229.53 S	906.43 W	803.24	3.681
5213.50	95.300	254.200	4512.58	237.97 S	937.03 W	830.78	4.456
5245.20	93.300	252.900	4510.20	246.83 S	967.34 W	858.54	7.518
5277.00	91.700	251.800	4508.81	256.46 S	997.61 W	886.76	6.104
5308.68	90.500	249.400	4508.21	266.98 S	1027.49 W	915.32	8.469
5340.33	89.700	249.200	4508.15	278.17 S	1057.09 W	944.17	2.605
5372.07	90.100	245.100	4508.21	290.49 S	1086.33 W	973.56	12.979
5403.83	91.000	243.800	4507.90	304.18 S	1114.99 W	1003.51	4.978
5435.47	90.200	241.800	4507.57	318.65 S	1143.12 W	1033.63	6.808
5467.18	89.700	241.300	4507.60	333.75 S	1171.01 W	1064.02	2.230
5498.86	89.100	239.900	4507.93	349.30 S	1198.60 W	1094.53	4.808
5530.51	89.600	237.900	4508.29	365.65 S	1225.70 W	1125.25	6.513
5562.22	89.900	235.600	4508.43	383.03 S	1252.22 W	1156.30	7.315
5593.85	89.000	233.400	4508.73	401.40 S	1277.96 W	1187.49	7.515
5625.60	88.200	233.300	4509.51	420.35 S	1303.43 W	1218.89	2.539
5657.32	87.500	230.000	4510.70	440.01 S	1328.28 W	1250.37	10.628
5689.14	87.900	227.200	4511.97	461.03 S	1352.13 W	1282.10	8.882
5720.90	89.000	224.500	4512.83	483.15 S	1374.91 W	1313.84	9.177
5752.00	90.400	221.500	4513.00	505.89 S	1396.12 W	1344.92	10.645
5784.36	91.200	218.500	4512.54	530.67 S	1416.91 W	1377.15	9.594
5816.06	91.200	215.300	4511.88	556.01 S	1435.94 W	1408.52	10.092
5847.79	90.800	212.000	4511.33	582.42 S	1453.52 W	1439.62	10.475
5879.56	91.500	208.800	4510.69	609.81 S	1469.59 W	1470.36	10.308
5911.23	93.100	205.200	4509.42	638.00 S	1483.95 W	1500.45	12.431
5942.96	91.000	202.900	4508.28	666.95 S	1496.87 W	1530.06	9.812
5974.70	88.300	202.700	4508.48	696.21 S	1509.17 W	1559.44	8.530
6006.42	87.800	202.200	4509.56	725.51 S	1521.28 W	1588.72	2.229
6038.07	87.000	201.900	4510.99	754.81 S	1533.15 W	1617.83	2.699
6069.49	86.000	202.500	4512.91	783.85 S	1545.00 W	1646.74	3.710
6101.49	85.700	201.500	4515.22	813.44 S	1556.95 W	1676.12	3.255
6133.26	88.400	201.400	4516.86	842.97 S	1568.55 W	1705.20	8.505
6164.98	89.000	201.000	4517.58	872.53 S	1580.02 W	1734.22	2.273
6196.74	89.200	200.900	4518.08	902.19 S	1591.37 W	1763.22	0.704
6228.53	89.800	201.900	4518.36	931.79 S	1602.97 W	1792.35	3.668
6260.25	92.100	200.600	4517.83	961.34 S	1614.47 W	1821.37	8.329
6291.92	93.400	201.000	4516.31	990.92 S	1625.70 W	1850.23	4.294
6323.96	93.200	200.700	4514.47	1020.81 S	1637.09 W	1879.41	1.124
6332.96	93.600	200.100	4513.93	1029.23 S	1640.22 W	1887.58	8.003

Continued...

CONFIDENTIAL
Sperry-Sun Drilling Services

Survey Report for Arnold SW Prospect-Maxx Lillie Lease - Complete Survey

Data Source: Information Provided by Bud 7/22/97

Buried Hills Production Company
Kansas

Ness County
Sec. 32-T16S-R25W

All data is in feet unless otherwise stated. Directions and coordinates are relative to True North.
Vertical depths are relative to RKB (Est). Northings and Eastings are relative to 227' FNL, & 630' FEL.

The Dogleg Severity is in Degrees per 100ft.
Vertical Section is from 227' FNL, & 630' FEL and calculated along an Azimuth of 225.000° (True).

Based Upon Minimum Curvature type calculations, at a Measured Depth of 6332.96ft.,
The Bottom Hole Displacement is 1936.39ft., in the Direction of 237.892° (True).

RELEASED
APR 26 2000
FROM CONFIDENTIAL

RECEIVED
KANSAS CORPORATION COMMISSION

SEP 03 1997

CONSERVATION DIVISION
WICHITA, KS

CONFIDENTIAL

RECEIVED
KANSAS CORPORATION COMMISSION

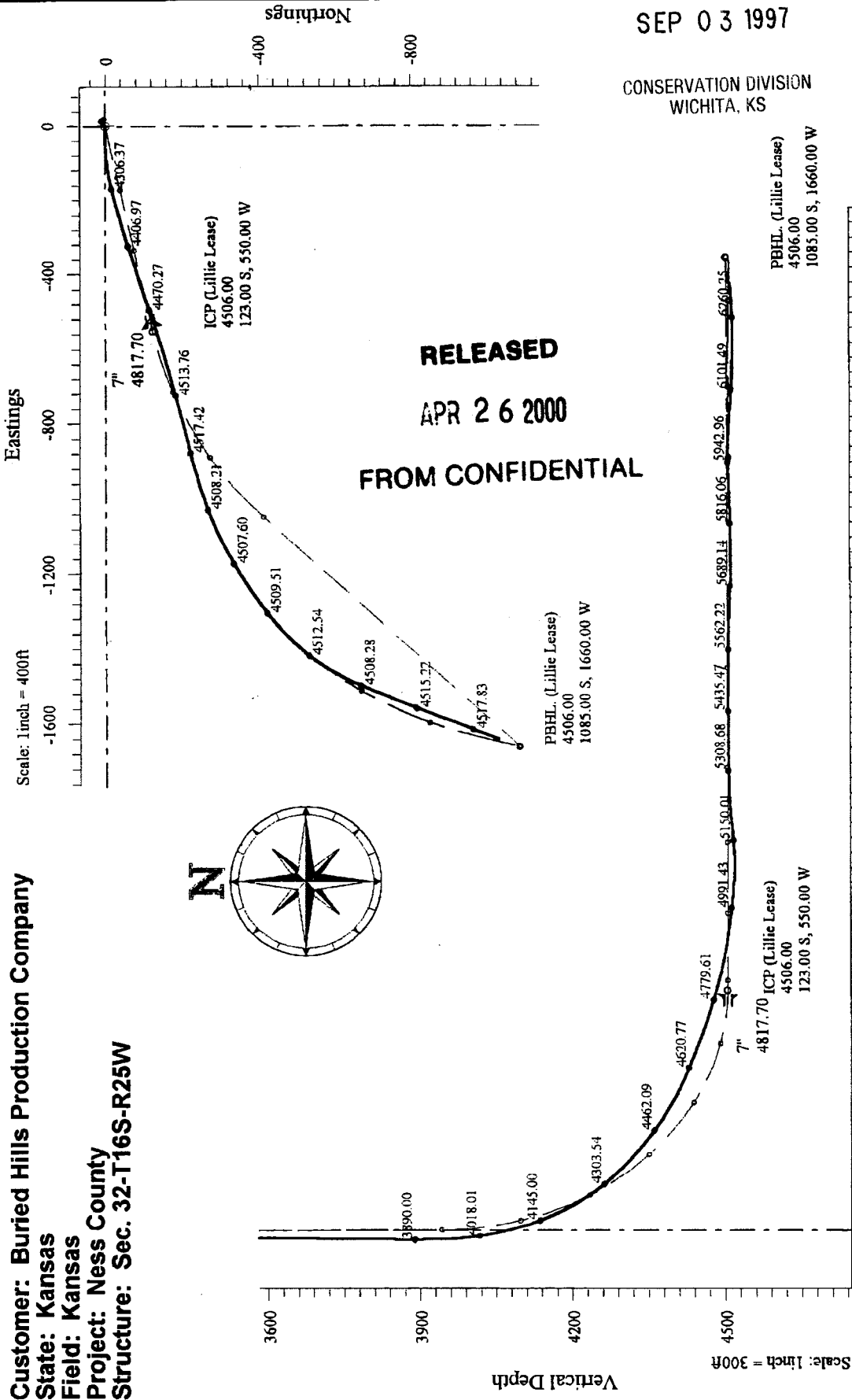
SEP 03 1997

DrillQuest

Well: Arnold SW Prospect-Maxx Lillie Lease

sperry-sun
DRILLING SERVICES

Customer: Buried Hills Production Company
State: Kansas
Field: Kansas
Project: Ness County
Structure: Sec. 32-T16S-R25W



Prepared: _____
Checked: _____
Approved: _____

Vertical Section

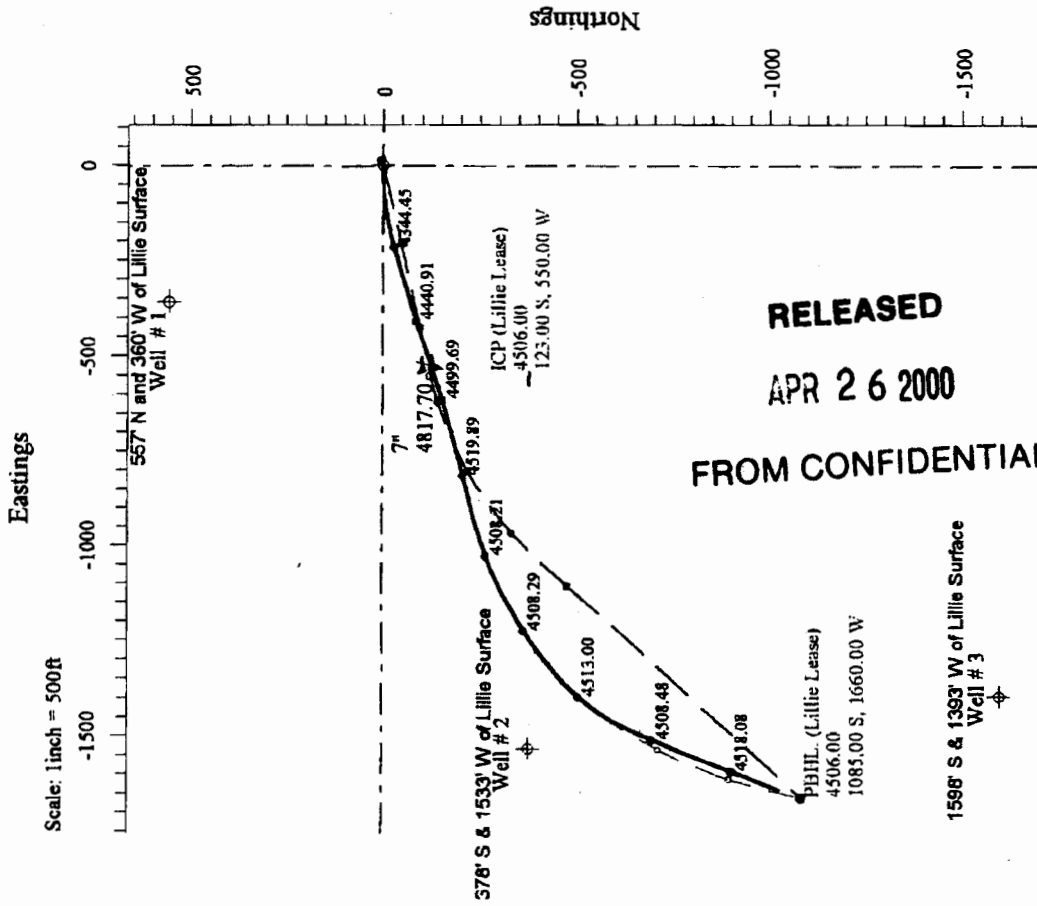
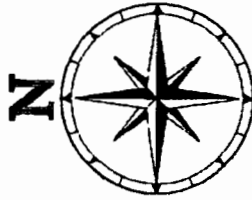
CONFIDENTIAL

DrillQuest

Well: Arnold SW Prospect-Maxx Lillie Lease



Customer: Buried Hills Production Company
 State: Kansas
 Field: Kansas
 Project: Ness County
 Structure: Sec. 32-T16S-R25W
 Well: Arnold SW Prospect-Maxx Lillie Lease



RELEASED
APR 26 2000
FROM CONFIDENTIAL

RECEIVED
 KANSAS CORPORATION COMMISSION

SEP 03 1997

CONSERVATION DIVISION
 WICHITA, KS

Prepared: _____
 Checked: _____
 Approved: _____

SEP 03 1997

CONSERVATION DIVISION
WICHITA, KS

CONFIDENTIAL

Sperry-Sun Drilling Services

Minimum Distance Proximity Scan on Current Survey Data - Highside Reference
Reference Survey: Arnold SW Prospect-Maxx Lillie Lease - Complete Survey
Comparison Survey: Well # 2 - Well # 2 Survey (assumed Vertical)
Scan Radius is Unlimited Clearance Factor cutoff is Unlimited

RELEASED
APR 26 2000

Buried Hills Production Company Kansas

Uncertainty Data for Reference Well				Uncertainty Data for Comparison Well				Separation (Ref. > Comp.)				
Meas. Depth (ft)	Vert. Depth (ft)	Ellipse Centre		Vert. Depth (ft)	Meas. Depth (ft)	Ellipse Centre		Elliptipse Major Axis/2	Between Centres (ft)	Between Ellipsoids (ft)	Relative HighSide Clearance	Factor
		Northings (ft)	Eastings (ft)			Northings (ft)	Eastings (ft)					
0.00	0.00	0.00 N	0.00 E	0.00	0.00	351.64 S	1539.26 W	0.00	1579.05	1579.05	257.13	481.30
100.00	100.00	0.06 N	0.06 E	100.00	79.00	351.64 S	1539.26 W	0.55	1578.98	1578.00	215.46	1598.39
200.00	200.00	0.26 N	0.23 E	200.00	179.00	351.64 S	1539.26 W	1.25	1579.19	1577.07	215.44	744.08
300.00	300.00	0.58 N	0.51 E	300.00	279.00	351.64 S	1539.26 W	1.95	1579.54	1576.29	215.43	484.99
400.00	400.00	1.02 N	0.91 E	400.00	379.00	351.64 S	1539.26 W	2.65	1580.03	1575.64	215.42	359.81
500.00	499.99	1.60 N	1.42 E	499.99	478.99	351.64 S	1539.26 W	3.34	1580.66	1575.13	215.40	286.04
600.00	599.99	2.30 N	2.05 E	599.99	578.99	351.64 S	1539.26 W	4.04	1581.43	1574.76	215.39	237.43
700.00	699.98	3.13 N	2.79 E	699.98	678.98	351.64 S	1539.26 W	4.74	1582.33	1574.54	215.36	202.99
800.00	799.98	4.09 N	3.64 E	799.98	778.98	351.64 S	1539.26 W	5.44	1583.38	1574.45	215.34	177.31
900.00	899.96	5.18 N	4.61 E	899.96	878.96	351.64 S	1539.26 W	6.14	1584.57	1574.50	215.31	157.44
1000.00	999.95	6.39 N	5.69 E	999.95	978.95	351.64 S	1539.26 W	6.83	1585.89	1574.69	215.27	141.60
1100.00	1099.94	7.73 N	6.88 E	1099.94	1078.94	351.64 S	1539.26 W	7.53	1587.36	1575.03	215.24	128.69
1200.00	1199.92	9.20 N	8.19 E	1199.92	1178.92	351.64 S	1539.26 W	8.23	1588.97	1575.50	215.20	117.97
1300.00	1299.90	10.69 N	9.54 E	1299.90	1278.90	351.64 S	1539.26 W	8.93	1590.62	1576.01	213.76	106.91
1400.00	1399.88	11.94 N	10.76 E	1399.88	1378.88	351.64 S	1539.26 W	9.63	1592.09	1576.35	211.35	101.15
1500.00	1499.87	12.94 N	11.83 E	1499.87	1478.87	351.64 S	1539.26 W	10.32	1593.36	1576.49	207.95	94.42
1600.00	1599.86	13.69 N	12.76 E	1599.86	1578.86	351.64 S	1539.26 W	11.02	1594.44	1576.43	202.86	88.53
1700.00	1699.86	14.19 N	13.56 E	1699.86	1678.86	351.64 S	1539.26 W	11.72	1595.33	1576.19	190.68	83.33
1800.00	1799.85	14.33 N	14.36 E	1799.85	1778.85	351.64 S	1539.26 W	12.42	1596.14	1575.86	162.32	78.71
1900.00	1899.85	14.06 N	15.23 E	1899.85	1878.85	351.64 S	1539.26 W	13.12	1596.93	1575.51	139.11	74.58
2000.00	1999.84	13.39 N	16.16 E	1999.84	1978.84	351.64 S	1539.26 W	13.81	1597.68	1575.13	124.48	70.86
2100.00	2099.83	12.31 N	17.15 E	2099.83	2078.83	351.64 S	1539.26 W	14.51	1598.40	1574.72	115.53	67.50
2200.00	2199.82	10.91 N	18.11 E	2199.82	2178.82	351.64 S	1539.26 W	15.21	1599.01	1574.19	105.34	64.44
2300.00	2299.80	9.39 N	18.72 E	2299.80	2278.80	351.64 S	1539.26 W	15.91	1599.27	1573.32	92.80	61.63
2400.00	2399.79	7.78 N	18.99 E	2399.79	2378.79	351.64 S	1539.26 W	16.61	1599.17	1572.08	80.19	59.05

SEP 03 1997

CONSERVATION DIVISION
WICHITA, KS

Sperry-Sun Drilling Services

Minimum Distance Proximity Scan on Current Survey Data - Highside Reference
Reference Survey: Arnold SW Prospect-Maxx Lillie Lease - Complete Survey
Comparison Survey: Well # 2 - Well # 2 Survey (assumed Vertical)
Scan Radius is Unlimited Clearance Factor cutoff is Unlimited

Buried Hills Production Company Kansas

Uncertainty Data for Reference Well				Uncertainty Data for Comparison Well				Separation (Ref. > Comp.)				
Meas. Depth (ft)	Vert. Ellipse Centre		Major Axis/2	Meas. Depth (ft)	Vert. Ellipse Centre		Major Axis/2	Between Centres (ft)	Between Ellipsoids (ft)	Relative Highside Clearance	Bearing	Factor
	Depth (ft)	Northings (ft)			Eastings (ft)	Depth (ft)						
2500.00	2469.78	6.09 N	18.91 E	2478.78	2469.78	351.64 S	1539.26 W	1598.70	1570.49	68.63	56.66	
2600.00	2599.76	4.29 N	18.48 E	2578.76	2599.76	351.64 S	1539.26 W	1597.88	1568.53	60.05	54.44	
2700.00	2699.74	2.61 N	18.01 E	2678.74	2699.74	351.64 S	1539.26 W	1597.05	1566.57	63.55	52.39	
2800.00	2799.73	1.18 N	17.72 E	2778.73	2799.73	351.64 S	1539.26 W	1596.46	1564.84	68.53	50.49	
2900.00	2899.73	0.00 N	17.61 E	2878.73	2899.73	351.64 S	1539.26 W	1596.09	1563.33	76.06	48.73	
3000.00	2999.72	0.93 S	17.68 E	2978.72	2999.72	351.64 S	1539.26 W	1595.95	1562.06	88.21	47.09	
3100.00	3099.72	1.60 S	17.92 E	3078.72	3099.72	351.64 S	1539.26 W	1596.04	1561.01	110.94	45.57	
3200.00	3199.72	1.88 S	18.33 E	3178.72	3199.72	351.64 S	1539.26 W	1596.38	1560.22	159.74	44.15	
3300.00	3299.72	1.73 S	18.90 E	3278.72	3299.72	351.64 S	1539.26 W	1596.97	1559.68	196.23	42.82	
3400.00	3399.71	1.16 S	19.64 E	3378.71	3399.71	351.64 S	1539.26 W	1597.82	1559.39	211.24	41.59	
3500.00	3499.70	0.15 S	20.55 E	3478.70	3499.70	351.64 S	1539.26 W	1598.92	1559.36	218.34	40.42	
3600.00	3599.69	1.17 N	21.53 E	3578.69	3599.69	351.64 S	1539.26 W	1600.16	1559.47	223.53	39.32	
3700.00	3699.68	2.34 N	22.20 E	3678.68	3699.68	351.64 S	1539.26 W	1601.08	1559.25	231.83	38.28	
3800.00	3799.67	3.31 N	22.54 E	3778.67	3799.67	351.64 S	1539.26 W	1601.63	1558.66	246.36	37.28	
3900.00	3899.67	4.05 N	22.53 E	3878.67	3899.67	351.64 S	1539.26 W	1601.78	1557.68	307.21	36.32	
4000.00	3999.35	2.94 N	16.57 E	3978.35	3999.35	351.64 S	1539.26 W	1595.72	1550.93	354.70	35.62	
4100.00	4095.75	1.55 N	9.20 W	4074.75	4095.75	351.64 S	1539.26 W	1570.32	1524.82	345.85	34.51	
4200.00	4183.90	0.65 N	56.01 W	4162.90	4183.90	351.64 S	1539.26 W	1524.60	1478.36	345.86	32.97	
4300.00	4261.21	5.83 S	118.84 W	4240.21	4261.21	351.64 S	1539.26 W	1462.07	1414.98	351.89	31.05	
4400.00	4326.62	20.17 S	192.95 W	4305.62	4326.62	351.64 S	1539.26 W	1386.72	1338.58	358.20	28.80	
4500.00	4381.34	42.10 S	273.63 W	4360.34	4381.34	351.64 S	1539.26 W	1303.13	1253.69	2.38	26.35	
4600.00	4423.03	68.11 S	360.61 W	4402.03	4423.03	351.64 S	1539.26 W	1212.42	1161.41	8.27	23.77	
4700.00	4456.13	96.35 S	450.65 W	4435.13	4456.13	351.64 S	1539.26 W	1118.21	1065.38	11.71	21.17	
4800.00	4483.56	126.10 S	542.08 W	4462.56	4483.56	351.64 S	1539.26 W	1022.32	967.47	15.45	18.64	
4900.00	4503.71	154.76 S	635.69 W	4482.71	4503.71	351.64 S	1539.26 W	924.60	867.55	19.29	16.21	

RELEASED
APR 26 2000

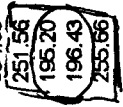
CONFIDENTIAL

SEP 03 1997

CONSERVATION DIVISION
WICHITA, KS

**Buried Hills Production Company
Kansas**

Uncertainty Data for Reference Well				Uncertainty Data for Comparison Well				Separation (Ref. > Comp.)				
Meas. Depth	Vert. Depth	Ellipse Major	Axis/2	Meas. Depth	Vert. Depth	Ellipse Major	Axis/2	Between Centres	Between Ellipsoids	Relative HighSide	Bearing	Factor
(ft)	(ft)	(ft)	(ft)	(ft)	(ft)	(ft)	(ft)	(ft)	(ft)	(ft)	(ft)	
5000.00	4514.46	180.67 S	27.96	4463.46	4514.46	351.64 S	31.37	825.25	765.90	9.20	13.90	
5100.00	4519.83	204.36 S	30.34	4498.83	4519.83	351.64 S	31.41	725.45	663.69	145.03	11.75	
5200.00	4513.78	228.90 S	32.80	4482.78	4513.78	351.64 S	31.37	625.66	561.50	157.32	9.75	
5300.00	4506.31	258.16 S	35.31	4467.31	4506.31	351.64 S	31.33	526.16	459.53	96.33	7.90	
5400.00	4507.96	286.23 S	37.84	4486.96	4507.96	351.64 S	31.32	428.16	369.00	93.13	6.19	
5500.00	4507.95	343.12 S	40.37	4486.95	4507.95	351.64 S	31.32	334.60	262.90	88.14	4.67	
5600.00	4508.85	397.81 S	42.86	4487.85	4508.85	351.64 S	31.33	251.56	177.37	88.75	3.39	
5700.00	4512.34	460.67 S	45.27	4491.34	4512.34	351.64 S	31.36	196.20	118.57	89.42	2.55	
5800.00	4512.22	534.69 S	47.53	4491.22	4512.22	351.64 S	31.35	196.43	117.54	89.56	2.49	
5900.00	4509.97	619.02 S	49.57	4488.97	4509.97	351.64 S	31.34	255.66	174.75	86.84	3.16	
6000.00	4509.31	710.23 S	51.43	4488.31	4509.31	351.64 S	31.33	341.86	259.10	94.56	4.13	
6100.00	4515.11	802.26 S	53.28	4494.11	4515.11	351.64 S	31.37	434.69	360.04	102.62	5.13	
6200.00	4518.12	894.99 S	55.17	4497.12	4518.12	351.64 S	31.40	530.59	444.02	92.84	6.13	
6300.00	4515.83	987.75 S	57.12	4494.83	4515.83	351.64 S	31.38	627.77	539.27	74.84	7.09	
6332.96	4513.93	1018.39 S	57.77	4492.93	4513.93	351.64 S	31.37	660.00	570.86	71.70	7.40	



Ellipse error terms are uncorrelated across survey tool tie-on points.
 Ellipse separations were reported only if both profiles contained survey tool information.
 Calculated ellipses do not incorporate surface errors or casing diameters.

All station coordinates were calculated using the Minimum Curvature method.
 All data is in feet unless otherwise stated. Directions and coordinates are relative to True North.
 Vertical depths are relative to RKB (Est). Northings and Eastings are relative to 227° FNL, & 630° FEL.
 Coordinate System is NAD27 Kansas State Planes, Southern Zone, US Foot. Grid Convergence at Surface is -0.983°.

RELEASED
APR 26 2000

FROM CONFIDENTIAL

CONFIDENTIAL

Sperry-Sun Drilling Services

Minimum Distance Proximity Scan on Current Survey Data - Highside Reference
 Reference Survey: Arnold SW Prospect-Maxx Lillie Lease - Complete Survey
 Comparison Survey: Well # 2 - Well # 2 Survey (assumed Vertical)
 Scan Radius is Unlimited Clearance Factor cutoff is Unlimited

CONFIDENTIAL

RECEIVED
KANSAS CORPORATION COMMISSION

SEP 03 1997

CONSERVATION DIVISION
WICHITA, KS

Sperry-Sun Drilling Services

Minimum Distance Proximity Scan on Current Survey Data - Highside Reference
Reference Survey: Arnold SW Prospect-Maxx Lillie Lease - Complete Survey
Scan Radius is Unlimited Clearance Factor cutoff is Unlimited

Buried Hills Production Company
Kansas

Survey tool program

Measured Depth (ft)	From		To		Survey Tool Description
	Measured Depth (ft)	Vertical Depth (ft)	Measured Depth (ft)	Vertical Depth (ft)	
0.00	0.00	0.00	3932.00	3931.66	BP High Accuracy Gyro
3932.00	3931.66	3931.66	6332.96	4513.93	MWD Magnetic

RELEASED

APR 26 2000

FROM CONFIDENTIAL

CONFIDENTIAL

RELEASED

APR 26 2000

Daily Operations Report

FROM CONFIDENTIAL

DATE: JULY 25 97
DAY: 1
WELL NAME: MAXX LILLIE #1 HZ
LOCATION: NE NE 32-16S -25W
TOTAL DEPTH: 6355.49' **FETD:** 6355.49'
FORMATION: WARSAW
PERFORATIONS: OPEN HOLE 4947.78' - 6355.49'
TYPE OF JOB: NEW WELL COMPLETION
PRESENT ACTIVITY: POOH WITH TUBING
RIG TIME: 14 **TOTAL: 14**
SUPERVISOR: RON ZUTZ
PHONE: 463-358-1081

<u>DAILY COST SUMMARY</u>	
AFE#:	5627
AMOUNT:	145000
<u>TYPE OF SERVICE</u>	<u>AMOUNT</u>
SUPERVISION	500
HALLIBURTON WIRELINE	2950
EXPRESS RIG	1700
PUMP SWIFT	800
TANK TRUCK	350
BED TRUCKS	450
RENTALS	850
DAILY COST: 7600	
PREVIOUS COST:	
CUMMULATIVE COST: 7600	

OPERATION:

MOVED IN AND RIGGED UP SERVICE RIG, DUMPED 50 BBLs FRESH WATER DOWN CASING TO RAISE FLUID LEVEL FOR LOGGING. MOVED IN AND RIGGED UP HALLIBURTON WIRELINE. RAN IN WITH GAMMA RAY- CCL- CBL -VDL LOG TO 4758' (75 DEGREES) AND LOGGED UP TO 4000'. CEMENT BOND GOOD TO EXCELLENT THRU OUT. LOGGED LOWER CEMENT TOP AT 2850'. PULLED UP AND LOGGED OVER STAGE TOOL AT 2040'. LOG INDICATES NO CEMENT BELOW STAGE TOOL AND GOOD CEMENT ABOVE. PULLED UP AND LOGGED UPPER CEMENT TOP AT 1328'. PULLED OUT OF HOLE. RIGGED OUT WIRELINE. INSTALLED MANUAL BOPS. RAN IN WITH 201 JOINTS 2 7/8" TUBING AND TAGGED END OF HOLE AT 6355.49' KB. MOVED IN PUMPER AND RIGGED TO REVERSE CIRCULATE. PUMPED 70 BBLs FRESH WATER FOLLOWED WITH 240 BBLs OIL DOWN CASING AND RETURNED MUD TO FRAC TANK ON LEASE. TOP 2" GOOSE NECK PLUGGED OF WITH SEVERAL 1" - 2" FORMATION ROCKS AFTER GETTING BOTTOMS UP. CLEARED SAME AND CONTINUED ON WITHOUT INCIDENT. RIGGED OUT PUMPER. PULLED BACK 50 JOINTS TUBING TO GET BACK INSIDE 7" CASING. SECURED WELL AND SDEN.

RECEIVED
 KANSAS CORPORATION COMMISSION

NOV 06 1997

CONSERVATION DIVISION
 WICHITA, KS

CONFIDENTIAL

RELEASED

APR 26 2000

Daily Operations Report

FROM CONFIDENTIAL

DATE: OCT 9 97
DAY: 1
WELL NAME: MAXX LILLIE #1 HZ
LOCATION: NE NE 32-16S -25W
TOTAL DEPTH: 6355.49' **PBTD:** 6355.49'
FORMATION: WARSAW
PERFORATIONS: OPEN HOLE 4947.78' - 6355.49'
TYPE OF JOB: STIMULATION
PRESENT ACTIVITY: RUNNING INTO OPEN HOLE
RIG TIME: 12 **TOTAL:** 12
SUPERVISOR: RON ZUTZ/RON SCHRAEDER
PHONE: 403-350-1081/316-772-6020

<u>DAILY COST SUMMARY</u>	
<u>AFE#:</u>	
<u>AMOUNT:</u>	
<u>TYPE OF SERVICE</u>	<u>AMOUNT</u>
SUPERVISION ZUTZ	400
SUPERVISION SCHRAEDER	400
SERVICE RIG PLAINS	1500
RENTALS	800
TANK TRUCK	300
TRUCKING GABEL	400
DAILY COST: 3800	
PREVIOUS COST:	
CUMMULATIVE COST: 3800	

OPERATION:

SHUT DOWN PUMPING UNIT. MOVED IN AND RIGGED UP SERVICE RIG. PICKED UP POLISH ROD AND REMOVED MOTOR AND DRIVE HEAD. PULLED OUT OF HOLE WITH RODS AND ROTOR. REMOVED WELLHEAD AND INSTALLED BOPS. UNSET ANCHOR AND PULLED OUT OF HOLE WITH 2 7/8" TUBING. LAID DOWN STATOR AND ANCHOR. RAN IN HOLE WITH OPEN ENDED 2 7/8" TUBING. PICKED UP AND ADDITIONAL 63 JOINTS TUBING AND RAN OUT INTO OPEN HOLE TO TOE AT 6379'. HAD SOME SLIGHT HOLE DRAG RUNNING IN WHICH CORRESPONDED TO DOGLEGS IN OPEN HOLE. PULLED OUT 51 JOINTS TO GET TUBING END AT 4770' INTO THE 7" CASING. SECURED WELL AND SDFN.

RECEIVED
 KANSAS CORPORATION COMMISSION

NOV 06 1997

CONSERVATION DIVISION
 WICHITA, KS

CONFIDENTIAL

RECEIVED
KANSAS CORPORATION COMMISSION

NOV 06 1997

Daily Operations Report

CONSERVATION DIVISION
WICHITA, KS

DATE: OCT 31 97
DAY: 1
WELL NAME: MAXX LILLIE #1 HZ
LOCATION: NE NE 32-16S -25W
TOTAL DEPTH: 6355.49' **PBTD:** 6355.49'
FORMATION: WARSAW
PERFORATIONS: OPEN HOLE 4947.78' - 6355.49'
TYPE OF JOB: STIMULATION
PRESENT ACTIVITY: WELL PUMPING TO BATTERY
RIG TIME: 10 **TOTAL:** 10
SUPERVISOR: RON ZUTZ/RON SCHRAEDER
PHONE: 403-350-1081/316-772-6020

<u>DAILY COST SUMMARY</u>	
AFE#:	
AMOUNT:	
<u>TYPE OF SERVICE</u>	<u>AMOUNT</u>
SUPERVISION ZUTZ	400
KUDU	1000
SERVICE RIG CHEYENNE	1200
TANK TRUCK	200
DAILY COST: 2800	
PREVIOUS COST:	
CUMMULATIVE COST: 2800	

RELEASED

APR 26 2000

FROM CONFIDENTIAL

OPERATION:

MOVED IN AND RIGGED UP SERVICE RIG. REMOVED MOTOR AND DRIVE HEAD. PULLED OUT OF HOLE WITH ROD AND FOUND ROTOR TWISTED OFF ABOUT 2 FT FROM TOP. REMOVED WELLHEAD, UNSET ANCHOR AND PULLED OUT OF HOLE WITH 2 7/8" TUBING. REPLACED STATOR AND RAN IN HOLE WITH NEW CONFIGURATION AS FOLLOWS:

8 - JOINTS 2 7/8" J-55 6.5 #/FT EUE TUBING	254.08'	4731.13'
1 - 2 7/8" X 3 1/2" EUE TUBING SWEDGE	.50'	
1 - 7 VARIPERM RIGHT HAND SET ANCHOR W/ 50000 # SH	3.10'	4473.45'
1 - 3 1/2" EUE PUMP SEATING NIPPLE	.40'	
1 - 3 1/2" X 2 7/8" BOX BY BOX CROSSOVER COLLAR	.50'	
1 - 2 7/8" EUE TUBING PUP	4.06'	
4 - JOINTS 2 7/8" TUBING	127.07'	
1 - KUDU 60 TP2000 STATOR	18.67'	4322.75'
1 - 2 7/8" EUE TUBING PUP	4.06'	
136 - JOINTS 2 7/8" J-55 6.5#/FT EUE TUBING	4307.77'	
1 - DOGNUT	.52'	
TOTAL TALLY	4720.73'	
DISTANCE H	10.40'	
TUBING END AT	4731.13' KB	

CONFIDENTIAL

MAXX LILLIE HZ # 1 OCT ³¹ 1997 DAY ¹ ROD AND ROTOR INSTALLATION

SET ANCHOR AND LANDED DOGNUT WITH 14000 # TENSION. INSTALLED WELLHEAD AND RAN IN HOLE WITH RODS AND ROTOR AS FOLLOWS:

- 1 - 60TP2000 KUDU ROTOR 18.84' LONG
- 1 - 7/8" PLAIN ROD
- 3 - 7/8" RODS WITH 5 SPIN THRU GUIDES PER ROD
- 7 - 7/8" RODS WITH 4 SPIN THRU GUIDES PER ROD
- 12 - 7/8" RODS WITH 3 SPIN THRU GUIDES PER ROD
- 137 - 7/8" RODS ALTERNATING 1 PLAIN/ 1 -WITH 2 SPIN THRU GUIDES PER ROD
- 11 - 7/8" RODS WITH 3 SPIN THRU GUIDES PER ROD
- 2 - 7/8" X 8' PONY ROD WITH 2 SPIN THRU GUIDES PER ROD
- 1 - 7/8" X 4' PONY ROD WITH 1 SPIN THRU GUIDE
- 1 - 1 1/4" X 22' POLISH ROD
- 1 - HEX HEAD.

SPACED OUT ROTR. INSTALLED DRIVE HEAD AND ELECTRIC MOTOR. RIGGED OUT SERVICE RIG. STARTED WELL PUMPING AT 100 RPM. WELL PUMPING GOOD. PRESSURE TESTED TUBING AND WELLHEAD WITH PUMP TO 200 PSI HELD GOOD. LEFT WELL PUMPING TO GUN BARREL.

RELEASED

APR 26 2000

FROM CONFIDENTIAL

RECEIVED
KANSAS CORPORATION COMMISSION

NOV 06 1997

CONSERVATION DIVISION
WICHITA, KS

CONFIDENTIAL

RELEASED

APR 26 2000

Daily Operations Report

FROM CONFIDENTIAL

DATE: JULY 26 97
DAY: 2
WELL NAME: MAXX LILLIE #1 HZ
LOCATION: NE NE 32-16S -25W
TOTAL DEPTH: 6355.49' **PRTD:** 6355.49'
FORMATION: WARSAW
PERFORATIONS: OPEN HOLE 4947.78' - 6355.49'
TYPE OF JOB: NEW WELL COMPLETION
PRESENT ACTIVITY: SWABBING
RIG TIME: 9' **TOTAL:** 23
SUPERVISOR: RON ZUTZ
PHONE: 483-358-1881

<u>DAILY COST SUMMARY</u>	
AFE#:	5627
AMOUNT:	145000
<u>TYPE OF SERVICE</u>	<u>AMOUNT</u>
SUPERVISION	500
EXPRESS RIG	1100
PACKER SWIFT	1000
RENTALS	200
TANK TRUCK	150
DAILY COST:	2950
PREVIOUS COST:	7600
CUMMULATIVE COST:	10550

OPERATION:

FOUND WELL DEAD. PULLED OUT OF HOLE WITH 2 7/8" TUBING. RAN IN WITH SWABING STRING. 27 JOINTS TUBING, BAKER R-3 PACKER AND TUBING TO SURFACE. TUBING END AT 4772.73' KB (75 DEGREES) AND PACKER SET AT 3896.89' KB WITH 8000 # COMPRESSION. RIGGED UP TO SWAB. CALCULATED LOAD OIL TO RECOVER 118 BBLs. RAN IN AND TAGGED INITIAL FLUID LEVEL AT 400'. PULLED 21 SWABS AND RECOVERED 84.29 BBLs FLUID. 68.51 BBLs OIL AND 15.78 BBLs WATER. SWABBING FLUID LEVEL CONSTANT AT 3750' WHILE PULLING 3 SWABS PER HOUR AND RECOVERING APPROXIMATELY 10 BBL/HR. WATER CUT CONSTANT AT 73% ON LAST 5 SWABS. LOAD OIL LEFT TO RECOVER 49.5 BBLs. SECURED WELL AND SDFN.

 RECEIVED
 KANSAS CORPORATION COMMISSION

NOV 06 1997

 CONSERVATION DIVISION
 WICHITA, KS

CONFIDENTIAL

SWAB REPORT

JULY 26 97 Day 2

NE NE 32-16S-25W

1.67 BBL/IN

DATE

LOCATION

TANK COEFF.

MAX LILLIE HZ #1

EXPRESS #4

116 BBLs

FLUID TO RECOVER

SWAB NO.	FLUID LEVEL	SWAB DEPTH	RECOVERED		WATER CUT %	WATER		OIL	
			THIS RUN	CUMULATIVE		THIS RUN	CUMULATIVE	THIS RUN	CUMULATIVE
		BBLs	BBLs	BBLs		BBLs	BBLs	BBLs	BBLs
1	400'	1500	6.68	6.68	0	0.00	0.00	6.68	6.68
2	1500'	2600	8.35	15.03	0	0.00	0.00	8.35	15.03
3	2200'	3300	5.84	20.87	0	0.00	0.00	5.84	20.87
4	2750'	3850	6.68	27.55	0	0.00	0.00	6.68	27.55
5	3050'	4000	5.84	33.39	0	0.00	0.00	5.84	33.39
6	3050'	4000	4.17	37.56	0	0.00	0.00	4.17	37.56
7	3300'	4000	4.17	41.73	0	0.00	0.00	4.17	41.73
8	3600'	4000	2.50	44.23	0	0.00	0.00	2.50	44.23
9	3600'	4000	2.50	46.73	0	0.00	0.00	2.50	46.73
10	3600'	4000	2.92	49.65	0	0.00	0.00	2.92	49.65
11	3200'	4000	4.59	54.24	0	0.00	0.00	4.59	54.24
12	3700'	4000	1.67	55.91	0	0.00	0.00	1.67	55.91
13	3700'	4000	1.67	57.58	0	0.00	0.00	1.67	57.58
14	3600'	4000	2.50	60.08	0	0.00	0.00	2.50	60.08
15	3600'	4300	4.17	64.25	30	1.25	1.25	2.92	63.00
16	3750'	4300	3.34	67.59	70	2.34	3.59	1.00	64.00
17	3750'	4300	3.34	70.93	73	2.44	6.03	0.90	64.90
18	3750'	4300	3.34	74.27	73	2.44	8.47	0.80	65.80
19	3750'	4300	3.34	77.61	73	2.44	10.90	0.90	66.71
20	3750'	4300	3.34	80.95	73	2.44	13.34	0.90	67.61
21	3750'	4300	3.34	84.29	73	2.44	15.78	0.90	68.51

RELEASED

APR 26 2000

FROM CONFIDENTIAL

Prepared by Ron Zutz 2/7/97

RECEIVED
FEDERAL RESERVE COMMISSION

NOV 05 1997

RESERVE DIVISION
WASH DC, DC

CONFIDENTIAL**RELEASED****APR 26 2000****Daily Operations Report****FROM CONFIDENTIAL**

DATE: OCT 10 97
DAY: 2
WELL NAME: MAXX LILLIE #1 HZ
LOCATION: NE NE 32-16S -25W
TOTAL DEPTH: 6355.49' **PBTD:** 6355.49'
FORMATION: WARSAW
PERFORATIONS: OPEN HOLE 4947.78' - 6355.49'
TYPE OF JOB: STIMULATION
PRESENT ACTIVITY: SWABBING
RIG TIME: 12 **TOTAL: 24**
SUPERVISOR: RON ZUTZ/RON SCHRAEDER
PHONE: 403-350-1081/316-772-6020

DAILY COST SUMMARY

TYPE OF SERVICE	AMOUNT
SUPERVISION ZUTZ	400
SUPERVISION SCHRAEDER	400
SERVICE RIG PLAINS	1500
ACID PUMPER SWIFT	5200
TANK TRUCK	300
PACKER SWIFT	1000

DAILY COST: 8600**PREVIOUS COST: 3800****CUMMULATIVE COST: 12600**

RECEIVED
 KANSAS CORPORATION COMMISSION

NOV 06 1997

OPERATION:

CONSERVATION DIVISION
 WICHITA, KS

FOUND WELL DEAD. RAN IN TUBING INTO OPEN HOLE TO 6265'. DRAGGING 5000 # IN. MOVED IN AND RIGGED UP ACID PUMPER. FILLED HOLE DOWN CASING USING 140 BBLS OIL. HOLE PRESSURED UP AND UNABLE TO CIRCULATE. PUMPED 18 BBLS DOWN TUBING TO FILL TUBING AND PRESSURED UP TUBING TO 500 PSL. TUBING PLUGGED. PUMPED OUT PLUG. REVERSED CIRCULATION AND ATTEMPTED TO ESTABLISH CIRCULATION. TUBING PLUGGED AGAIN. SUSPECT BRIDGING OCCURRING ON PUMP SEATING NIPPLE. PUMPED OUT PLUG DOWN TUBING USING 15 BBLS OIL. REVERSED CIRCULATION AND CIRCULATED BOTTOMS UP. RECOVERED APPROXIMATELY 30 BBLS MUD AND MUDDY WATER FROM WELL BORE. PUMPED 100 BBLS 15 % MUD CLEAN UP ACID DOWN TUBING AND SPOTTED ACROSS OPEN HOLE. RIGGED DOWN PUMPING UNIT. PULLED 48 JOINTS OF TUBING OUT OF OPEN HOLE. TUBING DRAGGING UP TO 8000 # PULLING BACK. SPOTTED TUBING END AT 4753'. RIGGED IN PUMPING UNIT TO PUMP DOWN TUBING AND CASING. FILLED HOLE WITH 40 BBLS OIL. SQUEEZED AWAY ACID AT 4 BBLS/MIN AT 300 PSI INITIALLY. FINAL SQUEEZE RATE 3 BBL/MIN AT 900 PSL SQUEEZED AWAY AN ADDITIONAL 60 BBLS. INITIAL SHUT IN WELL BORE PRESSURE 700 PSI. PRESSURE BLEW TO 300 PSI IN 5 MIN. RIGGED OUT PUMPING UNIT. PULLED OUT OF HOLE WITH 2 7/8" TUBING. RAN BACK IN HOLE WITH 2 JOINTS TUBING, PSN, 26 JOINTS TUBING, 7" BAKER R-3 PACKER AND TUBING TO SURFACE. SET PACKER WITH 15000 # COMPRESSION. TUBING END AT 4753'. PACKER SET DEPTH AT 3900'. RIGGED UP TO SWAB. RAN IN AND TAGGED INITIAL FLUID LEVEL AT 1400'. SAVER HEAD LEAKING BADLY UNABLE TO CONTINUE SWABBING. SECURED WELL AND SDFN.

CONFIDENTIAL

RELEASED

APR 26 2000

Daily Operations Report

FROM CONFIDENTIAL

DATE: JULY 27 97
DAY: 3
WELL NAME: MAXX LILLIE #1 HZ
LOCATION: NE NE 32-16S -25W
TOTAL DEPTH: 6355.49' **PETD:** 6355.49'
FORMATION: WARSAW
PERFORATIONS: OPEN HOLE 4947.78' - 6355.49'
TYPE OF JOB: NEW WELL COMPLETION
PRESENT ACTIVITY: SWABBING
RIG TIME: 9 **TOTAL:** 32
SUPERVISOR: RON ZUTZ
PHONE: 403-350-1081

DAILY COST SUMMARY	
<u>AREA:</u>	5627
<u>AMOUNT:</u>	145088
<u>TYPE OF SERVICE</u>	<u>AMOUNT</u>
SUPERVISION	500
EXPRESS RIG	1100
RENTALS	200
DAILY COST: 1800	
PREVIOUS COST: 10550	
CUMMULATIVE COST: 12350	

OPERATION:

FOUND SHUT IN TUBING PRESSURE TSTM. RIGGED UP TO SWAB, RAN IN AND TAGGED INITIAL FLUID LEVEL 2300'. PULLED 22 SWABS AND RECOVERED 76.35 BBLs FLUID. 33.06 BBLs OF OIL AND 43.29 BBLs WATER. AVERAGE CUT 56.6% WATER. SWABBING FLUID LEVEL RELATIVELY CONSTANT AT 3700'. PULLING 2 SWABS PER HOUR AND RECOVERING APPROXIMATELY 6-7 BBLs/HR. WATER CUTS STABILIZED BY END OF DAY AT 50%. LOAD OIL LEFT TO RECOVER 12.93 BBLs. SECURED WELL AND SDEN.

RECEIVED
KANSAS CORPORATION COMMISSION

NOV 06 1997

CONSERVATION DIVISION
WICHITA, KS

SWAB REPORT

CONFIDENTIAL

RECEIVED
SAS CORPORATION COMMISSION
NOV 06 1997

CONSERVATION DIVISION
WICHITA, KS

WELL NAME MAX LILLIE HZ #1
SERVICE RIG EXPRESS #4
FLUID TO RECOVER 49.49 BBL'S OIL

DATE JULY 27 97 DAY # 3
LOCATION NE NE 32-18S-25W
TANK COEF. 1.67 BBL/IN

SWAB NO.	FLUID LEVEL	SWAB DEPTH	RECOVERED		WATER CUT %	WATER		OIL	
			THIS RUN	CUMULATIVE		BARRELS THIS RUN	CUMULATIVE	BARRELS THIS RUN	CUMULATIVE
1	2500	3600	6.26	6.26	80	5.01	5.01	1.25	1.25
2	3050	4200	5.83	12.09	100	5.83	10.84	0.00	1.25
3	3500	4300	4.58	16.67	78	3.57	14.41	1.01	2.26
4	3800	4300	2.92	19.59	5	0.15	14.56	2.77	5.03
5	3750	4300	3.34	22.93	5	0.17	14.72	3.17	8.21
6	3850	4300	2.50	25.43	69	1.63	16.35	0.88	9.09
7	3700	4300	3.34	28.77	60	2.00	18.35	1.34	10.42
8	3700	4300	3.34	32.11	61	2.04	20.39	1.30	11.72
9	3803	4300	2.82	35.03	59	1.72	22.11	1.20	12.92
10	3800	4300	2.82	37.95	50	1.46	23.57	1.46	14.38
11	3650	4300	3.76	41.71	47	1.77	25.34	1.98	16.37
12	3700	4300	3.34	45.05	59	1.97	27.31	1.37	17.74
13	3700	4300	3.34	48.39	57	1.90	29.21	1.44	19.18
14	3700	4300	3.34	51.73	45	1.50	30.72	1.84	21.01
15	3700	4300	3.34	55.07	52	1.74	32.45	1.80	22.82
16	3700	4300	9.34	58.41	52	1.74	34.19	1.60	24.22
17	3700	4300	2.82	61.33	48	1.43	35.62	1.49	25.71
18	3700	4300	2.82	64.25	48	1.43	37.05	1.49	27.20
19	3700	4300	3.34	67.59	52	1.74	38.79	1.60	28.80
20	3700	4300	2.92	70.51	48	1.43	40.22	1.49	30.29
21	3700	4300	2.82	73.43	53	1.55	41.77	1.37	31.68
22	3700	4300	2.92	76.35	52	1.52	43.29	1.40	33.08

Prepared by Ron Zutz 27/7/97

CONFIDENTIAL

APR 26 2000
RELEASED

SWAB REPORT

DATE

JULY 28 97 DAY 3

LOCATION

NE NE 32-16S-25W

TANK COEF.

1.87 BBL/IN

WELL NAME

MAXX LILLIE HZ #1

SERVICE RIG

EXPRESS #4

FLUID TO RECOVER

12.93 BBL'S OIL

SWAB NO.	FLUID LEVEL	SWAB DEPTH	RECOVERED		CUMULATIVE	WATER CUT	BARRELS THIS RUN	WATER		OIL	
			THIS RUN	BBL'S				BBL'S	%	CUMULATIVE	BARRELS THIS RUN
1	2850'	4000'	5.84	5.84	5.84	75	4.38	4.38	1.46	1.46	
2	3450'	4300'	5.00	10.84	10.84	93	4.65	9.03	0.35	1.81	
3	3850'	4300'	3.76	14.60	14.60	50	1.88	10.91	1.88	3.69	
4	3800'	4300'	2.82	17.52	17.52	5	0.15	11.06	2.77	6.46	
5	3500'	4300'	4.60	22.12	22.12	61	2.81	13.86	1.79	8.26	
6	3600'	4300'	4.18	26.30	26.30	59	2.47	16.33	1.71	9.97	
7	3700'	4300'	3.34	29.64	29.64	50	1.67	18.00	1.67	11.64	
8	3650'	4300'	3.76	33.40	33.40	46	1.73	19.73	2.03	13.67	
9	3750'	4300'	3.34	36.74	36.74	48	1.54	21.26	1.80	15.48	
10	3850'	4300'	2.51	39.25	39.25	48	1.15	22.42	1.36	16.83	
11	3850'	4300'	2.51	41.76	41.76	52	1.31	23.72	1.20	18.04	
12	3800'	4300'	2.82	44.68	44.68	48	1.40	25.13	1.52	19.55	
13	3740'	4300'	3.34	48.02	48.02	48	1.60	26.73	1.74	21.29	
14	3800'	4300'	2.92	50.94	50.94	50	1.46	28.19	1.46	22.75	
15	3800'	4300'	2.92	53.86	53.86	52	1.52	29.71	1.40	24.15	
16	3800'	4300'	2.92	56.78	56.78	52	1.52	31.23	1.40	25.55	
17	3900'	4300'	2.25	59.03	59.03	52	1.17	32.40	1.06	26.63	
18	3900'	4300'	2.25	61.28	61.28	47	1.06	33.45	1.19	27.83	
19	3850'	4300'	2.50	63.78	63.78	50	1.25	34.70	1.25	29.08	
20	3850'	4300'	2.50	66.28	66.28	52	1.30	36.00	1.20	30.28	
21	3850'	4300'	2.50	68.78	68.78	53	1.33	37.33	1.18	31.45	
22				68.78	68.78			37.33		31.45	

CONFIDENTIAL

PRODUCTION DIVISION
WICHITA, KS
NOV 09 1997
RECEIVED
OIL & GAS PRODUCTION COMMISSION

Prepared by Ron Zutz 28/7/97

CONFIDENTIAL
APR 26 2000
RELEASED

CONFIDENTIAL**Daily Operations Report**

DATE: OCT 11 97
DAY: 3
WELL NAME: MAXX LILLIE #1 HZ
LOCATION: NE NE 32-16S -25W
TOTAL DEPTH: 6355.49' **PBITD:** 6355.49'
FORMATION: WARSAW
PERFORATIONS: OPEN HOLE 4947.78' - 6355.49'
TYPE OF JOB: STIMULATION
PRESENT ACTIVITY: SWABBING
RIG TIME: 9 **TOTAL:** 33
SUPERVISOR: RON ZUTZ/RON SCHRAEDER
PHONE: 403-350-1081/316-772-6020

<u>DAILY COST SUMMARY</u>	
<u>TYPE OF SERVICE</u>	<u>AMOUNT</u>
SUPERVISION ZUTZ	400
SUPERVISION SCHRAEDER	400
SERVICE RIG PLAINS	1700
TANK TRUCK	200
DAILY COST: 2700	
PREVIOUS COST: 12600	
CUMMULATIVE COST: 15300	

RELEASED**APR 26 2000****FROM CONFIDENTIAL****OPERATION:**

FOUND SHUT IN TUBING PRESSURE TSTM. RIGGED UP TO SWAB. RAN IN AND TAGGED INITIAL FLUID LEVEL AT 2000'. PULLED 36 SWABS AND RECOVERED 161.9 BBLs OF FLUID. FINAL SWABBING FLUID LEVEL AT 4050'. RECOVERED 148.16 BBLs OF OIL AND 13.74 BBLs OF ACID WATER. WATER PH INITIALLY 1.5 BY END OF DAY PH 5. LOAD OIL TO RECOVER 153 BBLs. CUMMULATIVE RECOVERED 148.16. LOAD OIL LEFT TO RECOVER 4.84 BBLs. ACID WATER TO RECOVER 100 BBLs. CUMMULATIVE RECOVERED 13.74 BBLs. ACID WATER LEFT TO RECOVER 86.26 BBLs. SECURED WELL AND SDFN.

RECEIVED
 KANSAS CORPORATION COMMISSION

NOV 06 1997

CONSERVATION DIVISION
 WICHITA, KS

CONFIDENTIAL

OCT 11 97

3.00

NE NE 32-16S-25W

RELEASED

APR 26 2000

FROM CONFIDENTIAL

DATE

DAY

LOCATION

SWAB REPORT

RECEIVED

KANSAS CORPORATION COMMISSION

NOV 06 1997

CONSERVATION DIVISION
WICHITA, KS

WELL NAME **MAXX LILLIE HZ #1**

SERVICE RIG **PLAINS**

FLUID TO RECOVER

SWAB NO.	FLUID LEVEL	SWAB DEPTH	RECOVER		OIL CUT %	BBS OIL		BBS WATER	
			THIS RUN	CUMM. BBS RECOVER		RECOVER THIS RUN	CUMM.	RECOVER THIS RUN	CUMM.
1	2000	3200	6.68	6.68	100	6.68	6.68	0.00	0.00
2	2550	3700	8.35	15.03	100	8.35	15.03	0.00	0.00
3	2800	3900	6.68	21.71	100	6.68	21.71	0.00	0.00
4	3000	4200	8.35	30.06	100	8.35	30.06	0.00	0.00
5	3200	4200	7.51	37.57	100	7.51	37.57	0.00	0.00
6	3200	4200	6.68	44.25	100	6.68	44.25	0.00	0.00
7	3200	4200	6.68	50.93	100	6.68	50.93	0.00	0.00
8	3200	4350	6.26	57.19	100	6.26	57.19	0.00	0.00
9	3200	4350	5.42	62.61	100	5.42	62.61	0.00	0.00
10	3200	4350	5.84	68.45	100	5.84	68.45	0.00	0.00
11	3200	4350	4.17	72.62	100	4.17	72.62	0.00	0.00
12	3400	4350	5.01	77.63	100	5.01	77.63	0.00	0.00
13	3600	4350	5.01	82.64	100	5.01	82.64	0.00	0.00
14	3900	4350	5.01	87.65	88	4.41	87.05	0.60	0.60
15	3900	4350	5.01	92.66	88	4.41	91.46	0.60	1.20
16	4000	4400	4.17	96.83	69	2.88	94.33	1.29	2.50
17	4000	4400	4.17	101.00	100	4.17	98.50	0.00	2.50
18	4000	4400	4.17	105.17	100	4.17	102.67	0.00	2.50
19	4050	4400	3.34	108.51	89	2.97	105.65	0.37	2.86
20	4050	4400	3.34	111.85	71	2.37	108.02	0.97	3.83
21	4050	4400	4.17	116.02	62	2.59	110.60	1.58	5.42
22	4050	4400	8.35	124.37	91	7.60	118.20	0.75	6.17
23	4050	4400	3.34	127.71	85	2.84	121.04	0.50	6.67
24	4050	4400	2.92	130.63	80	2.34	123.38	0.58	7.25
25	4050	4400	2.50	133.13	90	2.25	125.63	0.25	7.50

CONFIDENTIAL

SWAB REPORT

DATE OCT 11 97
DAY 3.00
LOCATION NE NE 32-16S-25W

WELL NAME MAXX LILLIE HZ.# 1
SERVICE RIG PLAINS
FLUID TO RECOVER _____

SWAB NO.	FLUID LEVEL	SWAB DEPTH	RECOVER THIS RUN	CUMM. BBL RECOVER	OIL CUT %	BBL OIL		BBL WATER	
						RECOVER THIS RUN	CUMM.	RECOVER THIS RUN	CUMM.
26	4050	4400	2.92	136.05	71	2.07	127.70	0.85	8.35
27	4050	4400	2.92	138.97	78	2.28	129.98	0.64	8.99
28	4050	4400	2.08	141.05	67	1.39	131.37	0.69	9.68
29	4050	4400	2.92	143.97	100	2.92	134.29	0.00	9.68
30	4050	4400	1.25	145.22	53	0.66	134.95	0.59	10.27
31	4050	4400	3.34	148.56	81	2.71	137.66	0.63	10.90
32	4050	4400	2.50	151.06	80	2.00	139.66	0.50	11.40
33	4050	4400	2.08	153.14	68	1.41	141.07	0.67	12.07
34	4050	4400	3.34	156.48	77	2.57	143.65	0.77	12.83
35	4050	4400	2.08	158.56	87	1.81	145.46	0.27	13.10
36	4050	4400	3.34	161.90	81	2.71	148.16	0.63	13.74

RELEASED
APR 26 2000
FROM CONFIDENTIAL

RECEIVED
KANSAS CORPORATION COMMISSION
NOV 06 1997
CONSERVATION DIVISION
WICHITA, KS

CONFIDENTIAL

SWAB REPORT

DATE JULY 29 87 DAY 4

LOCATION NE NE 32-16S-25W

WELL NAME MAXX LILLIE HZ #1

EXPRESS # 1.87 BBL/IN

SERVICE RIG EXPRESS #4

FLUID TO RECOVER _____

RECOVERED

SWAB NO.	FLUID LEVEL	SWAB DEPTH	RECOVERED		CUMULATIVE WATER CUT %	WATER CUT	WATER		OIL	
			THIS RUN	SWAB DEPTH			CUMULATIVE BBL'S	THIS RUN	CUMULATIVE BBL'S	THIS RUN
1	3000	4100	0.26	0.26	6.26	73	4.57	4.57	1.69	1.69
2	3700	4300	4.17	4.17	10.43	100	4.17	8.74	0.00	1.69
3	3800	4300	2.92	2.92	13.35	33	0.96	9.70	1.66	3.65
4	3750	4300	3.34	3.34	16.69	5	0.17	9.87	3.17	6.82
5	3750	4300	3.34	3.34	20.03	68	2.27	12.14	1.07	7.89
6	3750	4300	3.34	3.34	23.37	50	1.87	13.81	1.87	9.58
7	3750	4300	3.34	3.34	26.71	50	1.87	15.48	1.87	11.23
8	3800	4300	2.92	2.92	29.63	44	1.28	16.77	1.64	12.86
9	3800	4300	2.92	2.92	32.55	44	1.28	18.05	1.64	14.50
10	3850	4300	2.50	2.50	35.05	50	1.25	19.30	1.25	15.75
11	3850	4300	2.50	2.50	37.55	50	1.25	20.55	1.25	17.00
12	3850	4300	2.50	2.50	40.05	45	1.13	21.68	1.38	18.37
13	3850	4300	2.50	2.50	42.55	50	1.25	22.93	1.25	19.62
14	3850	4300	2.50	2.50	45.05	50	1.25	24.18	1.25	20.87
15	3850	4300	2.50	2.50	47.55	44	1.10	25.28	1.40	22.27
16	3850	4300	2.50	2.50	50.05	50	1.25	26.53	1.25	23.52
17	3850	4300	2.50	2.50	52.55	50	1.25	27.78	1.25	24.77
18	3850	4300	2.50	2.50	55.05	45	1.13	28.90	1.38	26.15
19	3900	4300	2.30	2.30	57.35	55	1.27	30.17	1.04	27.18
20	3900	4300	2.30	2.30	59.65	50	1.15	31.32	1.15	28.33
21	3900	4300	2.30	2.30	61.95	50	1.15	32.47	1.15	29.48
22					61.95			32.47		29.48

RELEASED

APR 26 2000

FROM CONFIDENTIAL

Prepared by Ron Zutz 28/7/87

RECEIVED

ENERGY CORPORATION COMMISSION

NOV 06 1997

CONSERVATION DIVISION
WICHITA, KS

CONFIDENTIAL

Daily Operations Report

DATE: OCT 12 97
DAY: 4
WELL NAME: MAXX LILLIE #1 HZ
LOCATION: NE NE 32-16S -25W
TOTAL DEPTH: 6355.49' **FBTD:** 6355.49'
FORMATION: WARSAW
PERFORATIONS: OPEN HOLE 4947.78' - 6355.49'
TYPE OF JOB: STIMULATION
PRESENT ACTIVITY: SWABBING
RIG TIME: 9 **TOTAL:** 42
SUPERVISOR: RON ZUTZ/RON SCHRAEDER
PHONE: 403-350-1081/316-772-6020

DAILY COST SUMMARY	
AFE#:	
AMOUNT:	
TYPE OF SERVICE	AMOUNT
SUPERVISION ZUTZ	400
SUPERVISION SCHRAEDER	400
SERVICE RIG PLAINS	1700
TANK TRUCK	200
DAILY COST:	2700
PREVIOUS COST:	15300
CUMMULATIVE COST:	18000

RELEASED

APR 26 2000

FROM CONFIDENTIAL

OPERATION:

FOUND SHUT IN TUBING PRESSURE TSTM. RIGGED UP TO SWAB. RAN IN AND TAGGED INITIAL FLUID LEVEL AT 3800'. PULLED 38 SWABS AND RECOVERED 82.95 BBLs OF FLUID. FINAL SWABBING FLUID LEVEL AT 4250'. RECOVERED 48.11 BBLs OF OIL AND 34.84 BBLs OF ACID WATER. WATER PH INITIALLY 5 BY END OF DAY PH 6. LOAD OIL TO RECOVER 4.84 BBLs. CUMMULATIVE OIL RECOVERED 196.27 BBLs. ALL LOAD OIL RECOVERED. NEW OIL RECOVERED 43.27 BBLs. ACID WATER TO RECOVER 100 BBLs. CUMMULATIVE RECOVERED 48.58 BBLs. ACID WATER LEFT TO RECOVER 51.42 BBLs. SECURED WELL AND SDFN.

RECEIVED
 KANSAS CORPORATION COMMISSION

NOV 09 1997

CONSERVATION DIVISION
 WICHITA, KS

RELEASED

APR 26 2000

CONFIDENTIAL

FROM CONFIDENTIAL

Daily Operations Report

DATE: JULY 28 97
DAY: 4
WELL NAME: MAXX LILLIE #1 HZ
LOCATION: NE NE 32-16S -25W
TOTAL DEPTH: 6355.49' **FBTD:** 6355.49'
FORMATION: WARSAW
PERFORATIONS: OPEN HOLE 4947.78' - 6355.49'
TYPE OF JOB: NEW WELL COMPLETION
PRESENT ACTIVITY: SWABBING
RIG TIME: 10 **TOTAL:** 42
SUPERVISOR: RON ZUTZ
PHONE: 403-350-1081

DAILY COST SUMMARY

AFE#:	5627
AMOUNT:	145000
TYPE OF SERVICE	AMOUNT
SUPERVISION	500
EXPRESS RIG	1300
RENTALS	200
DAILY COST: 2000	
PREVIOUS COST: 12350	
CUMMULATIVE COST: 14350	

OPERATION:

FOUND SHUT IN TUBING PRESSURE TSTM. RIGGED UP TO SWAB. RAN IN AND TAGGED INITIAL FLUID LEVEL AT 2850'. PULLED 21 SWABS AND RECOVERED 64.78 BBLs FLUID. 31.45 BBLs OIL AND 37.33 BBLs WATER. AVERAGE CUT 54% WATER. SWABBING FLUID LEVEL AT 3850' PULLING 2 SWABS PER HOUR AND RECOVERING ABOUT 5 BBLs/HOUR. ON SECOND SWAB FLUID RECOVERED CONTAINED DRILLING MUD. THIS CONTINUED THRU OUT DAY WITH AMOUNT OF MUD VARYING FROM HEAVY TO ALMOST NIL. NO QUANTITATIVE WAY TO MEASURE AMOUNT OF MUD. LOAD LEFT TO RECOVER 0.00 BBLs. NEW OIL PRODUCED 18.52 BBLs. SECURED WELL AND SDFN.

RECEIVED
KANSAS CORPORATION COMMISSION

NOV 06 1997

CONSERVATION DIVISION
WICHITA, KS

CONFIDENTIAL

RELEASED

APR 26 2000

FROM CONFIDENTIAL

OCT 12 97
4.00
NE NE 32-16S-25W

DATE
DAY
LOCATION

SWAB REPORT

RECEIVED
KANSAS CORPORATION COMMISSION

NOV 06 1997

CONSERVATION DIVISION
WICHITA, KS

WELL NAME **MAX LILLIE HZ #1**

SERVICE RIG **PLAINS**

FLUID TO RECOVER

SWAB NO.	FLUID LEVEL	SWAB DEPTH	RECOVER THIS RUN	CUMM. BBS RECOVER	OIL CUT %	BBS OIL		BBS WATER	
						RECOVER THIS RUN	CUMM.	RECOVER THIS RUN	CUMM.
1	3800	4400	4.17	4.17	88	3.67	3.67	0.50	0.50
2	3800	4400	3.34	7.51	0	0.00	3.67	3.34	3.84
3	4050	4400	3.34	10.85	0	0.00	3.67	3.34	7.18
4	4050	4400	2.50	13.35	0	0.00	3.67	2.50	9.68
5	4050	4400	3.34	16.69	0	0.00	3.67	3.34	13.02
6	4050	4400	2.92	19.61	0	0.00	3.67	2.92	15.94
7	4050	4400	2.08	21.69	0	0.00	3.67	2.08	18.02
8	4050	4400	3.34	25.03	2	0.07	3.74	3.27	21.29
9	4150	4400	2.08	27.11	38	0.79	4.53	1.29	22.58
10	4050	4400	2.92	30.03	58	1.69	6.22	1.23	23.81
11	4050	4400	2.50	32.53	67	1.68	7.90	0.83	24.63
12	4050	4400	2.08	34.61	67	1.39	9.29	0.69	25.32
13	4050	4400	3.75	38.36	80	3.00	12.29	0.75	26.07
14	4050	4400	2.08	40.44	75	1.56	13.85	0.52	26.59
15	4050	4400	2.92	43.36	67	1.96	15.81	0.96	27.55
16	4050	4400	1.25	44.61	89	1.11	16.92	0.14	27.69
17	4250	4400	1.25	45.86	50	0.63	17.54	0.63	28.32
18	4050	4400	2.08	47.94	83	1.73	19.27	0.35	28.67
19	4050	4400	2.50	50.44	66	1.65	20.92	0.85	29.52
20	4100	4400	1.87	52.11	90	1.50	22.42	0.17	29.69
21	4050	4400	2.92	55.03	81	2.37	24.79	0.55	30.24
22	4100	4400	1.67	56.70	96	1.60	26.39	0.07	30.31
23	4050	4400	2.08	58.78	55	1.14	27.53	0.94	31.25
24	4050	4400	2.50	61.28	97	2.43	29.96	0.08	31.32
25	4050	4400	2.50	63.78	90	2.25	32.21	0.25	31.57

CONFIDENTIAL

SWAB REPORT

DATE OCT 12 97
DAY 4.00
LOCATION NE NE 32-16S-25W

DATE
DAY
LOCATION

WELL NAME MAXX LILLIE HZ # 1
SERVICE RIG PLAINS
FLUID TO RECOVER _____

SWAB NO.	FLUID LEVEL	SWAB DEPTH	RECOVER		OIL CUT %	BBLs OIL		BBLs WATER	
			THIS RUN	CUMM. BBLs RECOVER		RECOVER THIS RUN	CUMM.	RECOVER THIS RUN	CUMM.
26	4100	4400	1.67	65.45	89	1.49	33.70	0.18	31.75
27	4100	4400	1.67	67.12	90	1.50	35.20	0.17	31.92
28	4050	4400	2.50	69.62	90	2.25	37.45	0.25	32.17
29	4100	4400	1.67	71.29	90	1.50	38.95	0.17	32.34
30	4100	4400	1.67	72.96	88	1.47	40.42	0.20	32.54
31	4150	4400	1.25	74.21	95	1.19	41.61	0.08	32.60
32	4050	4400	2.08	76.28	80	1.68	43.27	0.42	33.02
33	4200	4400	1.25	77.54	88	1.10	44.37	0.15	33.17
35	4200	4400	1.25	80.04	76	0.95	46.47	0.30	33.57
36	4200	4400	1.25	81.29	59	0.74	47.21	0.51	34.08
37	4250	4400	0.83	82.12	58	0.48	47.69	0.35	34.43
38	4250	4400	0.83	82.95	50	0.42	48.11	0.42	34.84

RELEASED
APR 26 2000
FROM CONFIDENTIAL

RECEIVED
KANSAS CORPORATION COMMISSION

NOV 06 1997

CONSERVATION DIVISION
WICHITA, KS

CONFIDENTIAL

RELEASED

APR 26 2000

Daily Operations Report

FROM CONFIDENTIAL

DATE: JULY 29 97
DAY: 5
WELL NAME: MAXX LILLIE #1 HZ
LOCATION: NE NE 32-16S -25W
TOTAL DEPTH: 6355.49' **FBTD:** 6355.49'
FORMATION: WARSAW
PERFORATIONS: OPEN HOLE 4947.78' - 6355.49'
TYPE OF JOB: NEW WELL COMPLETION
PRESENT ACTIVITY: SWABBING
RIG TIME: 10 **TOTAL:** 52
SUPERVISOR: RON ZUTZ
PHONE: 483-350-1081

DAILY COST SUMMARY	
AREA:	5627
AMOUNT:	145000
TYPE OF SERVICE	AMOUNT
SUPERVISION	350
EXPRESS RIG	1300
RENTALS	280
DAILY COST: 1850	
PREVIOUS COST: 14350	
CUMMULATIVE COST: 16200	

OPERATION:

FOUND SHUT IN TUBING PRESSURE TSTM. RIGGED UP TO SWAB. RAN IN AND TAGGED INITIAL FLUID LEVEL AT 3000'. PULLED 21 SWABS AND RECOVERED 61.95 BBLs FLUID. 29.48 BBLs OIL AND 32.47 BBLs WATER. AVERAGE CUT 52.5% WATER. SWABBING FLUID LEVEL AT 3900' PULLING 2 SWABS PER HOUR AND RECOVERING ABOUT 5 BBLs/HOUR. ON SECOND SWAB FLUID RECOVERED CONTAINED DRILLING MUD. THIS CONTINUED THRU OUT DAY WITH AMOUNT OF MUD VARYING FROM HEAVY TO ALMOST NIL. NO QUANTITATIVE WAY TO MEASURE AMOUNT OF MUD. NEW OIL PRODUCED 42.6 BBLs. SECURED WELL AND SDPN.

RECEIVED
CONSERVATION COMMISSION

NOV 05 1997

CONSERVATION DIVISION
WICHITA, KS

CONFIDENTIAL

SWAB REPORT

DATE JULY 30 97 DAY 5

LOCATION NE NE 32-16S-25W

TANK COEFF. 1.67 BBL/IN

DATE

LOCATION

TANK COEFF.

RECEIVED

KANSAS CORPORATION COMMISSION

NOV 08 1997

CONSERVATION DIVISION
WICHITA, KS

WELL NAME MAX LILLIE HZ #1

SERVICE RIG EXPRESS #1

FLUID TO RECOVER

SWAB NO.	FLUID LEVEL	SWAB DEPTH	RECOVERED		CUMULATIVE BBLs	WATER CUT %	BARRELS THIS RUN	WATER		OIL	
			THIS RUN	BBLs				CUMULATIVE BBLs	THIS RUN	CUMULATIVE BBLs	
1	3000	4100	6.05	6.05	75	4.54	4.54	1.51	1.51		
2	3700	4300	4.17	10.22	100	4.17	8.71	0.00	1.51		
3	3900	4300	2.30	12.52	17	0.39	9.10	1.91	3.42		
4	3750	4300	3.34	15.86	5	0.17	9.27	3.17	6.59		
5	3850	4300	2.71	18.57	60	1.63	10.89	1.08	7.68		
6	3850	4300	2.71	21.28	45	1.22	12.11	1.49	9.17		
7	3850	4300	2.71	23.99	45	1.22	13.33	1.49	10.66		
8	3850	4300	2.71	26.70	45	1.22	14.55	1.49	12.15		
9	3900	4300	2.50	29.20	40	1.00	15.55	1.50	13.65		
10	3900	4300	2.50	31.70	45	1.13	16.68	1.38	15.03		
11	3800	4300	2.50	34.20	45	1.13	17.80	1.38	16.40		
12	3900	4300	2.30	36.50	45	1.04	18.84	1.27	17.67		
13	3900	4300	2.30	38.80	45	1.04	19.87	1.27	18.93		
14	3900	4300	2.30	41.10	45	1.04	20.91	1.27	20.20		
15	3900	4300	2.30	43.40	40	0.92	21.83	1.38	21.58		
16	3900	4300	2.30	45.70	42	0.97	22.79	1.33	22.91		
17	3900	4300	2.30	48.00	50	1.15	23.94	1.15	24.06		
18	3900	4300	2.30	50.30	40	0.92	24.86	1.38	25.44		
19	3950	4300	2.09	52.39	46	0.96	25.82	1.13	26.57		
20	3950	4300	2.09	54.48	41	0.86	26.68	1.23	27.80		
21	3950	4300	2.09	56.57	45	0.94	27.62	1.15	28.95		
22			58.57	58.57			27.62		28.95		

RELEASED

APR 26 2000

FROM CONFIDENTIAL

CONFIDENTIAL

Daily Operations Report

DATE: OCT 13 97
DAY: 5
WELL NAME: MAXX LILLIE #1 HZ
LOCATION: NE NE 32-16S -25W
TOTAL DEPTH: 6355.49' **PBTD:** 6355.49'
FORMATION: WARSAW
PERFORATIONS: OPEN HOLE 4947.78' - 6355.49'
TYPE OF JOB: STIMULATION
PRESENT ACTIVITY: SETTING ANCHOR
RIG TIME: 9 **TOTAL:** 42
SUPERVISOR: RON ZUTZ/RON SCHRAEDER
PHONE: 403-350-1081/316-772-6020

<u>DAILY COST SUMMARY</u>	
AFE#:	
AMOUNT:	
<u>TYPE OF SERVICE</u>	<u>AMOUNT</u>
SUPERVISION ZUTZ	400
SUPERVISION SCHRAEDER	400
SERVICE RIG PLAINS	1700
DAILY COST:	2500
PREVIOUS COST:	18000
CUMMULATIVE COST:	20500

RELEASED

APR 26 2000

OPERATION:

FROM CONFIDENTIAL

FOUND WELL WITH SHUT IN TUBING PRESSURE TSTM. RIGGED UP TO SWAB. RAN IN AND TAGGED INITIAL FLUID LEVEL AT 4000'. PULLED 16 SWABS IN 4 HOURS AND RECOVERED 33.76 BBLs OF FLUID. FINAL SWABBING FLUID LEVEL AT 4200'. RECOVERED 8.94 BBLs OF OIL AND 24.82 BBLs OF WATER/ACID WATER. ACID IS ALL SPENT WITH A PH OF 6. RIGGED OUT SWABBING EQUIPEMENT. CUMMULATIVE OIL RECOVERED 205.21 BBLs. NEW OIL RECOVERED 52.21 BBLs. CUMMULATIVE WATER RECOVERED 73.40 BBLs. ACID WATER LEFT TO RECOVER 26.6 BBLs. PICKED UP AND UNSET BAKER R-3 PACKER. LOWERED TUBING 10 JOINTS INTO OPEN HOLE AT 5059'. DID NOT RUN INTO ANY OBSTRUCTIONS. PULLED OUT OF HOLE WITH 2 7/8" TUBING. MADE UP FINAL PRODUCTION STRING AND RAN IN WITH ANCHOR AND STATOR. COULD NOT SET ANCHOR AS BRAKES WERE TO HOT ON RIG. SECURED WELL AND SDFN.

RECEIVED
 KANSAS CORPORATION COMMISSION

NOV 06 1997

CONSERVATION DIVISION
 WICHITA, KS

CONFIDENTIAL

SWAB REPORT

DATE OCT 13 97
DAY 5.00
LOCATION NE NE 32-16S-25W

WELL NAME MAXX LILLIE HZ # 1

SERVICE RIG PLAINS

FLUID TO RECOVER

RECOVER THIS RUN

SWAB NO.	FLUID LEVEL	SWAB DEPTH	RECOVER THIS RUN	CUMM. BBS RECOVER	OIL CUT %	BBS OIL		BBS WATER	
						RECOVER THIS RUN	CUMM.	RECOVER THIS RUN	CUMM.
1	4000	4400	2.50	2.50	76	1.90	1.90	0.60	0.60
2	4000	4400	2.50	5.00	0	0.00	1.90	2.50	3.10
3	4000	4400	2.92	7.92	0	0.00	1.90	2.92	6.02
4	4050	4400	2.08	10.00	0	0.00	1.90	2.08	8.10
5	4100	4400	1.67	11.67	0	0.00	1.90	1.67	9.77
6	4100	4400	1.67	13.34	0	0.00	1.90	1.67	11.44
7	4100	4400	1.67	15.01	0	0.00	1.90	1.67	13.11
8	4050	4400	2.08	17.09	0	0.00	1.90	2.08	15.19
9	4050	4400	2.08	19.17	0	0.00	1.90	2.08	17.27
10	4150	4400	1.25	20.42	0	0.00	1.90	1.25	18.52
11	4100	4400	1.67	22.09	0	0.00	1.90	1.67	20.19
12	4050	4400	2.08	24.17	2	0.04	1.94	2.04	22.23
13	4000	4400	2.50	26.67	50	1.25	3.19	1.25	23.48
14	4050	4600	3.34	30.01	77	2.57	5.76	0.77	24.25
15	4300	4600	1.25	31.26	54	0.68	6.44	0.58	24.82
16	4200	4600	2.50	33.76	100	2.50	8.94	0.00	24.82

RELEASED
APR 26 2000
FROM CONFIDENTIAL

RECEIVED
KANSAS CORPORATION COMMISSION
NOV 06 1997
CONSERVATION DIVISION
WICHITA, KS

RELEASED

APR 26 2000

Daily Operations Report

FROM CONFIDENTIAL

DATE: JULY 30 97
DAY: 6
WELL NAME: MAXX LILLIE #1 HZ
LOCATION: NE NE 32-16S -25W
TOTAL DEPTH: 6355.49' **FETD:** 6355.49'
FORMATION: WARSAW
PERFORATIONS: OPEN HOLE 4947.78' - 6355.49'
TYPE OF JOB: NEW WELL COMPLETION
PRESENT ACTIVITY: SWABBING
RIG TIME: 10 **TOTAL:** 62
SUPERVISOR: RON ZUTZ
PHONE: 403-350-1081

<u>DAILY COST SUMMARY</u>	
AFE#:	5627
AMOUNT:	145000
TYPE OF SERVICE	AMOUNT
SUPERVISION	350
EXPRESS RIG	1300
RENTALS	200
DAILY COST: 1850	
PREVIOUS COST: 16200	
CUMMULATIVE COST: 18050	

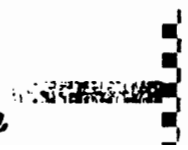
OPERATION:

FOUND SHUT IN TUBING PRESSURE TSTM. RIGGED UP TO SWAB. RAN IN AND TAGGED INITIAL FLUID LEVEL AT 3008'. PULLED 21 SWABS AND RECOVERED 56.57 BBLs FLUID, 28.95 BBLs OIL AND 27.62 BBLs WATER. AVERAGE CUT 48.8% WATER. SWABBING FLUID LEVEL AT 3950' PULLING 2 SWABS PER HOUR AND RECOVERING ABOUT 4.5 BBLs/HOUR. ON SECOND SWAB FLUID RECOVERED CONTAINED DRILLING MUD. THIS CONTINUED THRU OUT DAY WITH AMOUNT OF MUD VARYING FROM HEAVY TO ALMOST NIL. NO QUANTITATIVE WAY TO MEASURE AMOUNT OF MUD. NEW OIL PRODUCED 76.95 BBLs. SECURED WELL AND SDFN.

RECEIVED
KANSAS CORPORATION COMMISSION

NOV 05 1997

CONSERVATION DIVISION
WICHITA, KS



CONFIDENTIAL

SWAB REPORT

DATE JULY 31 97 DAY 6
LOCATION NE NE 32-18S-25W
TANK COEFF. 1.67 BBL/IN

NOV 06 1997
KANSAS CORPORATION COMMISSION
WICHITA, KS
CONSERVATION DIVISION

WELL NAME MAXX LILLIE HZ #1
SERVICE RIG EXPRESS #4
FLUID TO RECOVER _____

SWAB NO.	FLUID LEVEL	SWAB DEPTH	RECOVERED		WATER CUT %	WATER		OIL	
			THIS RUN	CUMULATIVE		BARRELS THIS RUN	CUMULATIVE BBLs	BARRELS THIS RUN	CUMULATIVE BBLs
1	3100	4100	5.63	5.63	75	4.22	4.22	1.41	1.41
2	3650	4300	3.76	8.39	85	3.57	7.79	0.19	1.60
3	3850	4300	2.71	12.10	35	0.95	8.74	1.76	3.36
4	3800	4300	2.92	15.02	5	0.15	8.89	2.77	6.13
5	3800	4300	2.92	17.94	42	1.23	10.12	1.69	7.82
6	3850	4300	2.71	20.65	50	1.36	11.47	1.96	9.18
7	3875	4300	2.50	23.15	47	1.18	12.65	1.33	10.50
8	3875	4300	2.50	25.65	43	1.08	13.72	1.43	11.83
9	3875	4300	2.50	28.15	50	1.25	14.97	1.25	13.18
10	3900	4300	2.30	30.45	42	0.97	15.94	1.33	14.51
11	3900	4300	2.30	32.75	47	1.08	17.02	1.22	15.73
12	3900	4300	2.30	35.05	45	1.04	18.05	1.27	17.00
13	3950	4300	2.09	37.14	50	1.05	19.10	1.05	18.04
14	3950	4300	2.09	39.23	50	1.05	20.14	1.05	19.09
15	3950	4300	2.09	41.32	50	1.05	21.19	1.05	20.13
16	3950	4300	2.09	43.41	50	1.05	22.23	1.05	21.18
17	3950	4300	2.09	45.50	50	1.05	23.28	1.05	22.22
18	3950	4300	2.30	47.80	50	1.15	24.43	1.15	23.37
19	3950	4300	2.09	49.89	50	1.05	25.47	1.05	24.42
20	3700	4300	3.55	53.44	50	1.78	27.25	1.78	26.19
21	3950	4300		53.44		0.00	27.25	0.00	26.19
22				53.44			27.25		26.19

RELEASED
APR 26 2000

FROM CONFIDENTIAL

CONFIDENTIAL

Daily Operations Report

DATE: OCT 14 97
DAY: 6
WELL NAME: MAXX LILLIE #1 HZ
LOCATION: NE NE 32-16S -25W
TOTAL DEPTH: 6355.49' **PBTD:** 6355.49'
FORMATION: WARSAW
PERFORATIONS: OPEN HOLE 4947.78' - 6355.49'
TYPE OF JOB: STIMULATION
PRESENT ACTIVITY: WELL PUMPING TO BATTERY
RIG TIME: 6 **TOTAL: 48**
SUPERVISOR: RON ZUTZ/RON SCHRAEDER
PHONE: 403-350-1081/316-772-6020

<u>DAILY COST SUMMARY</u>	
AFE#:	
AMOUNT:	
<u>TYPE OF SERVICE</u>	<u>AMOUNT</u>
SUPERVISION ZUTZ	400
SUPERVISION SCHRADER	400
SERVICE RIG PLAINS	800
TANK TRUCK	200
<hr/>	
DAILY COST:	1800
PREVIOUS COST:	20500
CUMMULATIVE COST:	22300

RELEASED

APR 26 2000

FROM CONFIDENTIAL

OPERATION:

FOUND WELL DEAD. LANDED DOGNOT AND REMOVED BOPS. PICKED UP DOGNOT AND SET ANCHOR. LANDED DOGNOT WITH 12000 # TENSION ON ANCHOR. FINAL INSTALLATION AS FOLLOWS:

4	- JOINTS 2 7/8" J-55 6.5 #/FT EUE TUBING	127.09'	4477.07'
1	- 2 7/8" X 3 1/2" EUE TUBING SWEDGE	.50'	
1	- 7 VARIPERM RIGHT HAND SET ANCHOR W/ 50000 # SH	3.10'	4346.38'
1	- 3 1/2" EUE PUMP SEATING NIPPLE	.40'	
1	- 3 1/2" X 2 7/8" BOX BY BOX CROSSOVER COLLAR	.50'	
1	- 2 7/8" EUE TUBING PUP	4.06'	
1	- KUDU 60 TP2000 STATOR	18.67'	4322.75'
1	- 2 7/8" EUE TUBING PUP	4.06'	RECEIVED
136	- JOINTS 2 7/8" J-55 6.5#/FT EUE TUBING	4387.77'	KANSAS CORPORATION COMMISSION
1	- DOGNOT	.52'	
TOTAL TALLY		4466.67'	
DISTANCE H		10.40'	
TUBING END AT		4477.07' KB	

NOV 06 1997

CONSERVATION DIVISION
WICHITA, KS

INSTALLED WELL HEAD. RAN IN WITH ROTOR AND RODS AS FOLLOWS ON PAGE # 2.

CONFIDENTIAL**MAXX LILLIE HZ #1 OCT 14 1997 DAY 6 ROD AND ROTOR INSTALLATION**

- 1 - 60TP2000 KUDU ROTOR 18.84' LONG
- 1 - 7/8" PLAIN ROD
- 3 - 7/8" RODS WITH 5 SPIN THRU GUIDES PER ROD
- 7 - 7/8" RODS WITH 4 SPIN THRU GUIDES PER ROD
- 12 - 7/8" RODS WITH 3 SPIN THRU GUIDES PER ROD
- 137 - 7/8" RODS ALTERNATING 1 PLAIN/ 1 -WITH 2 SPIN THRU GUIDES PER ROD
- 11 - 7/8" RODS WITH 3 SPIN THRU GUIDES PER ROD
- 2 - 7/8" X 8' PONY ROD WITH 2 SPIN THRU GUIDES PER ROD
- 1 - 7/8" X 4' PONY ROD WITH 1 SPIN THRU GUIDE
- 1 - 1 1/4" X 22' POLISH ROD
- 1 - HEX HEAD.

SPACED ROTOR 12" ABOVE TAG BAR. INSTALLED DRIVE HEAD AND ELECTRIC MOTOR. RIGGED OUT SERVICE RIG. STARTED WELL PUMPING AT 250 RPM TOOK 2 HOURS TO GET FLUID TO SURFACE. WELL PUMPING GOOD. PRESSURE TESTED TUBING AND WELLHEAD WITH PUMP TO 200 PSI HELD GOOD. SLOWED DOWN UNIT TO 200 RPM FOR NIGHT.

**RELEASED
APR 26 2000
FROM CONFIDENTIAL**

**RECEIVED
KANSAS CORPORATION COMMISSION**

NOV 06 1997

**CONSERVATION DIVISION
WICHITA, KS**

CONFIDENTIAL

Daily Operations Report

DATE: JULY 31 97
DAY: 7
WELL NAME: MAXX LILLIE #1 HZ
LOCATION: NE NE 32-16S -25W
TOTAL DEPTH: 6355.49' **PRTD:** 6355.49'
FORMATION: WARSAW
PERFORATIONS: OPEN HOLE 4947.78' - 6355.49'
TYPE OF JOB: NEW WELL COMPLETION
PRESENT ACTIVITY: SWABBING
RIG TIME: 10 **TOTAL:** 72
SUPERVISOR: RON ZUTZ
PHONE: 403-350-1081

<u>DAILY COST SUMMARY</u>	
AFF#:	5627
AMOUNT:	145000
<u>TYPE OF SERVICE</u>	<u>AMOUNT</u>
SUPERVISION	350
EXPRESS RIG	1300
RENTALS	200
DAILY COST: 1850	
PREVIOUS COST: 18050	
CUMMULATIVE COST: 19900	

RELEASED
APR 26 2000
FROM CONFIDENTIAL

OPERATION:

FOUND SHUT IN TUBING PRESSURE TSTM. RIGGED UP TO SWAB. RAN IN AND TAGGED INITIAL FLUID LEVEL AT 3100'. PULLED 20 SWABS AND RECOVERED 53.44 BBLs FLUID. 26.19 BBLs OIL AND 27.25 BBLs WATER. AVERAGE CUT 51% WATER. SWABBING FLUID LEVEL AT 3950' PULLING 2 SWABS PER HOUR AND RECOVERING ABOUT 4.2 BBLs/HOUR. ON SECOND SWAB FLUID RECOVERED CONTAINED DRILLING MUD. THIS CONTINUED THRU OUT DAY WITH AMOUNT OF MUD VARYING FROM HEAVY TO ALMOST NIL. NO QUANTITATIVE WAY TO MEASURE AMOUNT OF MUD. NEW OIL PRODUCED 103.14 BBLs. SECURED WELL AND SDFN.

RECEIVED
KANSAS CORPORATION COMMISSION

NOV 06 1997

CONSERVATION DIVISION
WICHITA, KS

CONFIDENTIAL

AUGUST 197 DAY 7

NE NE 32-18S-25W

1.67 BBL/IN

DATE

LOCATION

TANK COEFF

SWAB REPORT

RECEIVED

KANSAS CORPORATION COMMISSION

NOV 06 1997

CONSERVATION DIVISION
WICHITA, KS

WELL NAME MAXX LILLIE HZ #1

SERVICE RIG EXPRESS #4

FLUID TO RECOVER _____

SWAB NO.	FLUID LEVEL	SWAB DEPTH	RECOVERED		CUMULATIVE BBLs	WATER CUT %	WATER CUT BARRELS THIS RUN	WATER		OIL	
			THIS RUN BBLs	BBLs				CUMULATIVE BBLs	BARRELS THIS RUN	CUMULATIVE BBLs	
1	3100	4100	6.26	6.26	6.26	72	4.51	4.51	1.75	1.75	
2	3700	4300	3.55	9.81	9.81	86	3.05	7.56	0.50	2.25	
3	3750	4300	3.34	13.15	13.15	31	1.04	8.60	2.30	4.55	
4	3850	4300	2.71	15.86	15.86	15	0.41	9.00	2.30	6.86	
5	3850	4300	2.71	18.57	18.57	43	1.17	10.17	1.54	8.40	
6	3875	4300	2.50	21.07	21.07	50	1.25	11.42	1.25	9.65	
7	3875	4300	2.50	23.57	23.57	50	1.25	12.67	1.25	10.90	
8	3875	4300	2.50	26.07	26.07	45	1.13	13.79	1.38	12.28	
9	3900	4300	2.50	28.57	28.57	50	1.25	15.04	1.25	13.53	
10	3900	4300	2.30	30.87	30.87	45	1.04	16.08	1.27	14.79	
11	3950	4300	2.09	32.96	32.96	42	0.88	16.96	1.21	16.00	
12	3950	4300	2.09	35.05	35.05	50	1.05	18.00	1.05	17.05	
13	3850	4300	2.08	37.14	37.14	42	0.88	18.88	1.21	18.26	
14	3950	4300	2.09	39.23	39.23	45	0.94	19.82	1.15	19.41	
15	3950	4300	2.09	41.32	41.32	45	0.84	20.78	1.15	20.56	
16	3975	4300	1.88	43.20	43.20	50	0.94	21.70	0.94	21.50	
17	3975	4300	1.88	45.08	45.08	47	0.88	22.58	1.00	22.50	
18	3975	4300	1.88	46.96	46.96	45	0.85	23.43	1.03	23.53	
19	3975	4300	1.88	48.84	48.84	50	0.94	24.37	0.94	24.47	
20	3975	4300	1.88	50.72	50.72	50	0.84	25.31	0.94	25.41	
21		4300		50.72	50.72		0.00	25.31	0.00	25.41	
22				50.72	50.72			25.31		25.41	

FROM CONFIDENTIAL

RELEASED

APR 26 2000

CONFIDENTIAL

RELEASED

APR 26 2000

Daily Operations Report

FROM CONFIDENTIAL

DATE: AUGUST 1 97
DAY: 8
WELL NAME: MAXX LILLIE #1 HZ
LOCATION: NE NE 32-16S -25W
TOTAL DEPTH: 6355.49' **FBTD:** 6355.49'
FORMATION: WARSAW
PERFORATIONS: OPEN HOLE 4947.78' - 6355.49'
TYPE OF JOB: NEW WELL COMPLETION
PRESENT ACTIVITY: SWABBING
RIG TIME: 10 **TOTAL: 82**
SUPERVISOR: RON ZUTZ
PHONE: 403-350-1081

<u>DAILY COST SUMMARY</u>	
AFE#:	5627
AMOUNT:	145000
TYPE OF SERVICE	AMOUNT
SUPERVISION	350
EXPRESS RIG	1300
RENTALS	200
DAILY COST: 1850	
PREVIOUS COST: 19900	
CUMMULATIVE COST: 21750	

OPERATION:

FOUND SHUT IN TUBING PRESSURE TSTM. RIGGED UP TO SWAB. RAN IN AND TAGGED INITIAL FLUID LEVEL AT 3100'. PULLED 20 SWABS AND RECOVERED 50.72 BBLs FLUID. 25.41 BBLs OIL AND 25.31 BBLs WATER. AVERAGE CUT 50% WATER. SWABBING FLUID LEVEL AT 3975' PULLING 2 SWABS PER HOUR AND RECOVERING ABOUT 4.0 BBLs/HOUR. ON SECOND SWAB FLUID RECOVERED CONTAINED DRILLING MUD. MUD RECOVERED IS BECOMING LIGHTER AS TIME PROGRESSES. NEW OIL PRODUCED 128.82 BBLs. SECURED WELL AND SDFN.

RECEIVED
KANSAS CORPORATION COMMISSION

NOV 04 1997

CONSERVATION
DIVISION

CONFIDENTIAL

SWAB REPORT

DATE AUGUST 2 97 DAY 8
LOCATION NE NE 32-16S-25W
TANK CODE 1.67 BBL/IN

WELL NAME MAXX LILLIE HZ #1
SERVICE RIG EXPRESS #4

FLUID TO RECOVER

SWAB NO.	FLUID LEVEL	SWAB DEPTH	RECOVERED		CUMULATIVE WATER CUT %	WATER		OIL	
			THIS RUN	BBL		THIS RUN	BBL	THIS RUN	BBL
1	3150	4100	5.21	5.21	73	3.80	3.80	1.41	1.41
2	3750	4300	3.34	8.55	100	3.34	7.14	0.00	1.41
3	3700	4300	3.55	12.10	30	1.07	8.21	2.49	3.89
4	3800	4300	2.92	15.02	15	0.44	8.65	2.48	6.37
5	3800	4300	2.92	17.94	20	0.58	9.23	2.34	8.71

RELEASED
 APR 26 2000
 FROM CONFIDENTIAL

RECEIVED
 KANSAS CORPORATION COMMISSION

NOV 06 1997

CONSERVATION DIVISION
 WICHITA, KS

CONFIDENTIAL

RECEIVED
KANSAS CORPORATION COMMISSION

Daily Operations Report

NOV 06 1997

DATE: AUGUST 2 97
DAY: 9
WELL NAME: MAXX LILLIE #1 HZ
LOCATION: NE NE 32-16S -25W
TOTAL DEPTH: 6355.49' PBTD: 6355.49'
FORMATION: WARSAW
PERFORATIONS: OPEN HOLE 4947.78' - 6355.49'
TYPE OF JOB: NEW WELL COMPLETION
PRESENT ACTIVITY: RUNNING IN WITH ROTOR AND RODS
RIG TIME: 9 TOTAL: 91
SUPERVISOR: RON ZUTZ
PHONE: 403-350-1081

CONSERVATION DIVISION

DAILY COST SUMMARY

AFE#:	5627
AMOUNT:	145000
TYPE OF SERVICE	AMOUNT
SUPERVISION	700
EXPRESS RIG	1000
SWIFT PACKER RENTAL	300
RENTALS	200
DAILY COST: 2200	
PREVIOUS COST: 21740	
CUMMULATIVE COST: 21750	

RELEASED

APR 26 2000

FROM CONFIDENTIAL

2400

OPERATION:

FOUND SHUT IN TUBING PRESSURE TSTM. RIGGED UP TO SWAB. RAN IN AND TAGGED INITIAL FLUID LEVEL AT 3150'. PULLED 5 SWABS AND RECOVERED 17.94 BBLS FLUID. 6.71 BBLS OIL AND 9.23 BBLS WATER. AVERAGE CUT 51% WATER. SWABBING FLUID LEVEL AT 3600'. CUMMULATIVE NEW OIL RECOVERED 136.9 BBLS. RIGGED OUT SWAB EQUIPEMENT. UNSET R-3 PACKER. ALLOWED WELL TO EQUALIZE. PULLED OURT OF HOLE WITH 2 7/8" TUBING . PAKER IN GOOD SHAPE. RAN IN WITH FINAL PRODUCTION STRING AS FOLLOWS:

4 - JOINTS 2 7/8" J-55 6.5 #/FT EUE TUBING	127.09'	4477.07'
1 - 2 7/8" X 3 1/2" EUE TUBING SWEDGE	.50'	
1 - 7 VARIPERM RIGHT HAND SET ANCHOR W/ 50000 # SH	3.10'	4346.38'
1 - 3 1/2" EUE PUMP SEATING NIPPLE	.40'	
1 - 3 1/2" X 2 7/8" BOX BY BOX CROSSOVER COLLAR	.50'	
1 - 2 7/8" EUE TUBING PUP	4.06'	
1 - KUDU 60 TP2000 STATOR	18.67'	4322.75'
1 - 2 7/8" EUE TUBING PUP	4.06'	
136 - JOINTS 2 7/8" J-55 6.5#/FT EUE TUBING	4307.77'	
1 - DOGNUT	.52'	
TOTAL TALLY	4466.67'	
DISTANCE H	10.40'	
TUBING END AT	4477.07' KB	

SET ANCHOR AND LANDED DOGNUT WITH 16000 # TENSION . SECURED WELL AND SDFN

CONFIDENTIAL

RELEASED

Daily Operations Report

APR 26 2000

DATE: AUGUST 3 97
DAY: 10
WELL NAME: MAXX LILLIE #1 HZ
LOCATION: NE NE 32-16S -25W
TOTAL DEPTH: 6355.49' **PBTD:** 6355.49'
FORMATION: WARSAW
PERFORATIONS: OPEN HOLE 4947.78' - 6355.49'
TYPE OF JOB: NEW WELL COMPLETION
PRESENT ACTIVITY: RUNNING IN WITH ROTOR AND RODS
RIG TIME: \$ **TOTAL 99**
SUPERVISOR: RON ZUTZ
PHONE: 403-350-1081

FROM CONFIDENTIAL
DAILY COST SUMMARY

APE#:	5627
AMOUNT:	145000
TYPE OF SERVICE	AMOUNT
SUPERVISION	700
EXPRESS RIG	900
KUDU	37500
RENTALS	200
DAILY COST: 39200	
PREVIOUS COST: 21750	
CUMMULATIVE COST: 60950	

OPERATION:

FOUND WELL DEAD . REMOVED BOPS AN INSTALLED PUMPING WELLHEAD. RAN IN WITH ROTOR AND RODS AS FOLLOWS:

- 1 - 60TP2000 KUDU ROTOR 18.84' LONG
- 1 - 7/8" PLAIN ROD
- 3 - 7/8" RODS WITH 5 SPIN THRU GUIDES PER ROD
- 7 - 7/8" RODS WITH 4 SPIN THRU GUIDES PER ROD
- 12 - 7/8" RODS WITH 3 SPIN THRU GUIDES PER ROD
- 137 - 7/8" RODS ALTERNATING 1 PLAIN/ 1 -WITH 2 SPIN THRU GUIDES PER ROD
- 11 - 7/8" RODS WITH 3 SPIN THRU GUIDES PER ROD
- 2 - 7/8" X 8' PONY ROD WITH 2 SPIN THRU GUIDES PER ROD
- 1 - 7/8" X 4' PONY ROD WITH 1 SPIN THRU GUIDE
- 1 - 1 1/4" X 22' POLISH ROD
- 1 - HEX HEAD.

RECEIVED
KANSAS CORPORATION COMMISSION

NOV 06 1997

CONSERVATION DIVISION
WICHITA, KS

SPACED ROTOR 12" ABOVE TAG BAR. INSTALLED DRIVE HEAD AND ELECTRIC MOTOR. RIGGED OUT SERVICE RIG. SECURED WELL AND SDFN.

SCHEDULED POWER HOOK UP , FLOWLINE INSTALLATION AND TANK BATTERY INSTALLTION FOR MORNING.

CONFIDENTIAL

RELEASED

KUDU USA
PUMP INSTALLATION REPORT

APR 26 2000

FROM CONFIDENTIAL

CUSTOMER: Maxx Energy DATE: 8-3-97

LOCATION: Lilly FIELD: _____

RIG COMPANY: Express COMPANY REP: Frank

PUMP SIZE: 60TP2000 ROTOR 4272⁸⁰ SN STATOR T149¹⁹⁹ SN

ROD SIZE: 7/8" CONDITION: New D78

CENTRALIZERS: Yes SIZE: 2 7/8" x 7/8" MAKE: Huber

TUBING SIZE: 2 7/8" TUBING CONDITION: New

TUBING TALLY: 4307.77 ANCHOR PLACEMENT: 4339.14

TAIL JOINT: _____ PUP JOINTS: 4' x 2 7/8"

WELL HEAD EQUIPMENT: 2000 series flange

DRIVE HEAD: MODEL: VH100-9.2 SN: 1872 STAND: 50"-60"

DRIVE HEAD SHEAVE: 5V-23.6 x 3 MOTOR SHEAVE: 5V90 x 3

BELT SIZE: 5V1000 START UP SPEED: 450 rpm at 60Hz

MOTOR SIZE: 74 HP 30 RPM 1180 FRAME 326T

ROTOR SPACING: 40" "AFTER STRING WT

PONY RODS: 8' x 7/8 8' x 7/8 4' x 7/8

START UP AMPS: _____ COMMENTS: .83 bbls per rpm
per day at 100% EFF.

OVERALL COMMENTS: _____

RECEIVED
KANSAS CORPORATION COMMISSION

NOV 06 1997

CONSERVATION DIVISION
WICHITA, KS

CONFIDENTIAL

KUDU TEXAS CORP

RELEASED

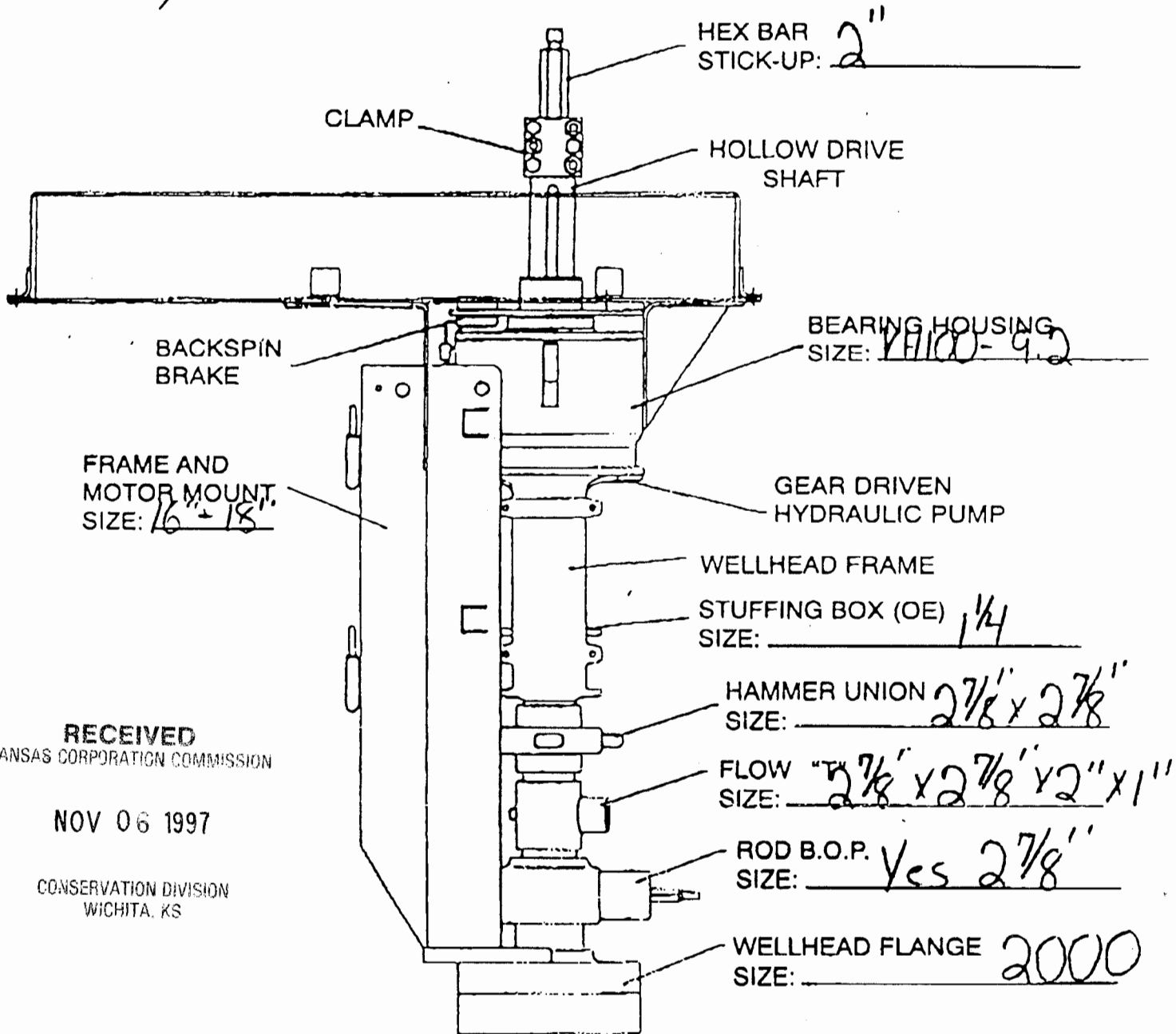
APR 26 2000

OPERATOR: Maxx Energy

FIELD: _____

WELL NO.: Lily

FROM CONFIDENTIAL



RECEIVED
KANSAS CORPORATION COMMISSION

NOV 06 1997

CONSERVATION DIVISION
WICHITA, KS

STAND HEIGHT: 50"-60"

DRIVER SHEAVE: 5V 9.0 x 3

DRIVEN SHEAVE: 5V 23.6 x 3

BELTS: 5V1000

INSTALLER: David Carver

DATE: 8-3-97

CONFIDENTIAL

KUDU TEXAS CORP

WELL NO.: Maxx Ea

OPERATOR: _____

FIELD: _____

RELEASED

APR 26 2000

HEX BAR: 2" x 2" x 7/8"
CLAMP: 2

RECEIVED
KANSAS CORPORATION COMMISSION

NOV 06 1997

FROM CONFIDENTIAL

SURFACE CASING: _____

LS CASING: 7"

TUBING: 2 7/8"

136-4307.77

COLLAR: _____

SUB: _____

COLLAR: 2 7/8"

SUB: 4" x 2 7/8"

COLLAR: 2 7/8"

CONSERVATION DIVISION
WICHITA, KS

POLISHED ROD

X/O CPLG:

SUBS:

GUIDES/ROD:

GUIDES/ROD:

11-3 per
ROD SIZE: 7/8"

68- Plain
69- 2 per
GUIDES/ROD:

12- 3 per
7- 4 per
3- 5 per

PONY
ROD: Plain

NO. RODS: 171

ROTOR NO: 4272

TEMP: 80°

SPACE OUT: 40"

PUMP
LENGTH: 18.69

ROTOR
LENGTH: 18.84

4.16

17.35

1.34

4.10

.90

3.52

PUMP: 60TP2000

ELASTOMER: 199

STATOR NO: 1149

NO. OF
ELEMENTS: 3

Tag Bar: 2 7/8" x 12"

CLR ID: 2 7/8" Collar

TAG BAR: 4" x 2 7/8" Sub

SWEDGE: 3 1/2" x 2 7/8" X/O

ANCHOR: 3 1/2" Seat nipple

STANDING VALVE: 7" Variperm

PERF. SUB: 3 1/2" Collar

MUD JT: 3 1/2" x 2 7/8" Suck

BULL PLUG: _____

PERFORATIONS: _____

PBTD: _____

4466.42