

# PETROLEUM, INC.

## GEOLOGICAL REPORT

DRILLING TIME  
AND  
SAMPLE LOG

COMPANY PETROLEUM, INC.  
LEASE KALER WELL NO 1  
FIELD \_\_\_\_\_  
LOCATION C NENE  
SECTION 14 TOWNSHIP 16S RANGE 25W  
COUNTY NESS STATE KANSAS

ELEVATIONS -  
KB 2556' FEET  
DF 2554' FEET  
GL \_\_\_\_\_ FEET  
MEASUREMENTS ARE ALL  
FROM KB

CONTRACTOR Bluegoose DRIG RIG NO. \_\_\_\_\_  
COMMENCED DRILLING 8-18-79  
COMPLETED DRILLING 8-28-79  
RTD 4553 FEET LTD 4553 FEET  
MUD UP AT 4100 FEET MUD TYPE DRISPAK

CASING  
set @ 450  
8 5/8" @ 250'

ELECTRICAL SURVEYS  
LATEROLOG G.N.  
Acoustic - Caliper

SAMPLES SAVED FROM 3600 FEET TO 4553 FEET  
DRILLING TIME KEPT FROM 3600 FEET TO 4553 FEET  
SAMPLES EXAMINED FROM 3600 FEET TO 4553 FEET  
GEOLOGICAL SUPERVISION FROM 3950 FEET TO 4553 FEET  
GEOLOGIST DAN A. NIXON

NOTES SAMPLES LAGGED  
TESTING BY: Miller TESTING GR. Bend, Ks.

RECEIVED  
SEP 10 1979  
GEOLOGICAL SURVEYS  
DIVISION

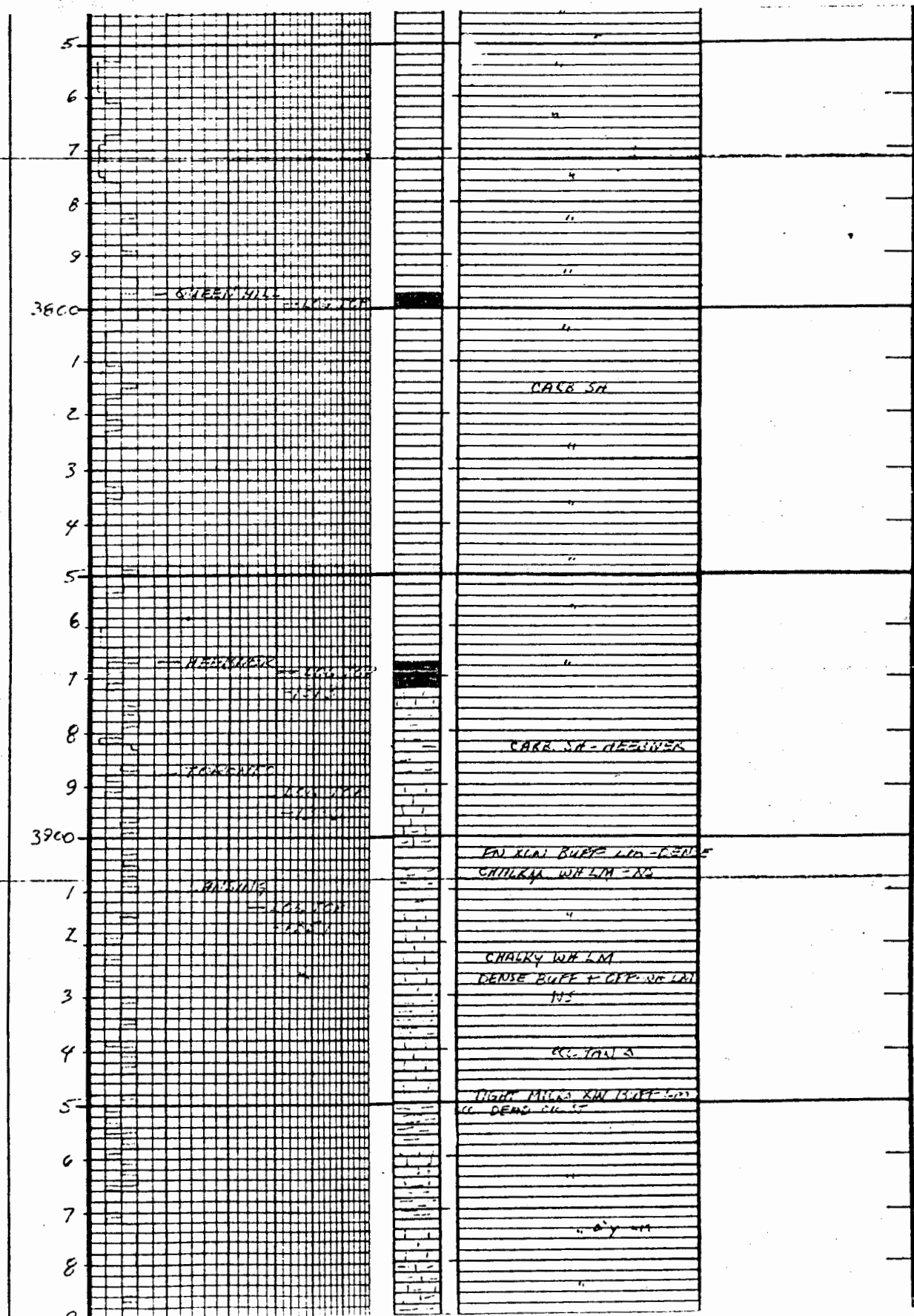
REMARKS Because of its structural position to the 5-13 Dietterich (10' high on  
 like and 4' high on Miss), results of DST #2 and calculations of zones in  
 the Mississippian, production casing was set for further testing  
 J. A. H. H. J.

LEGEND:

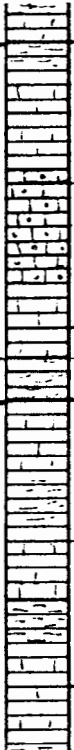
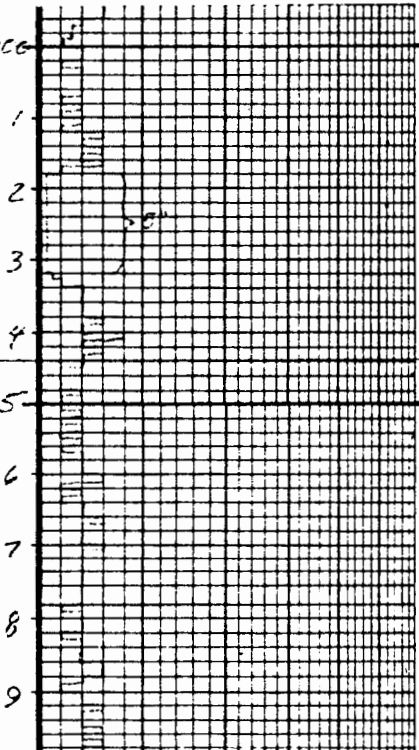
Limestone	Oolitic Limestone	Dolomite	Chert	Shale	Carbonaceous Shale	Salt	Sandstone	Anhydrite

SCALE: 5" = 100'

DEPTH	DRILLING TIME IN MINUTES PER FOOT Rate of Penetration Increases	OIL SHOWS	LITHOLOGY	SAMPLE DESCRIPTIONS	REMARKS
3600					
1				RD GRAY SH CHALKY W/CLAY FAT FR ALN GPF-RED LIM	STONE CORRAL 1934'-64' +662 to +592
2				GRN SH	
3				"	
4				"	
5				"	
6				"	
7				"	
8				"	
9				FR RED BUFF SILICA LIM	
3700					
1				"	
2				"	
3				"	



4000

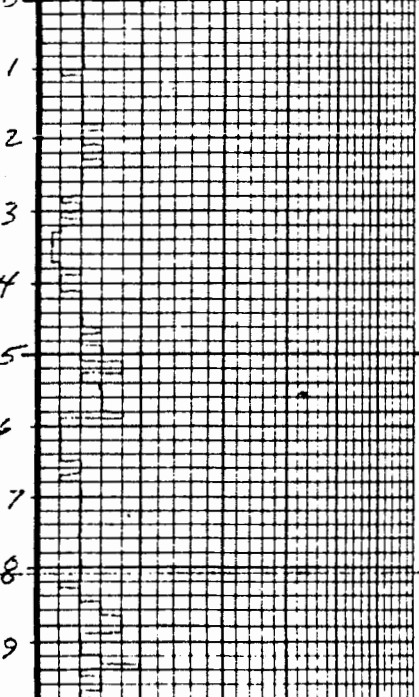


OLL - BONE A

OLL OOLIC 9 - BARI  
CHALKY DIFFICULT  
TAN A  
POSS. LIM - TIGHT - AN

DENSE GRAY, WITH LIM  
OLL DEAD OIL ST  
GRY - TAN A

4100

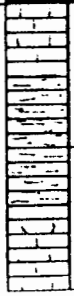
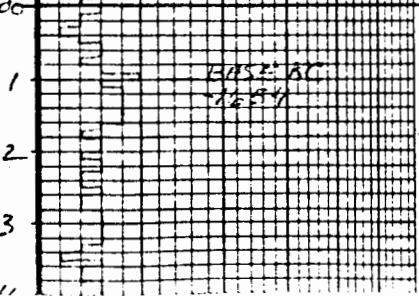


2 - 4 LIM

FIN LIM  
BARI. OOLIC WITH LIM

SUCRO, BUFF LIM  
DLK - GRAY SH

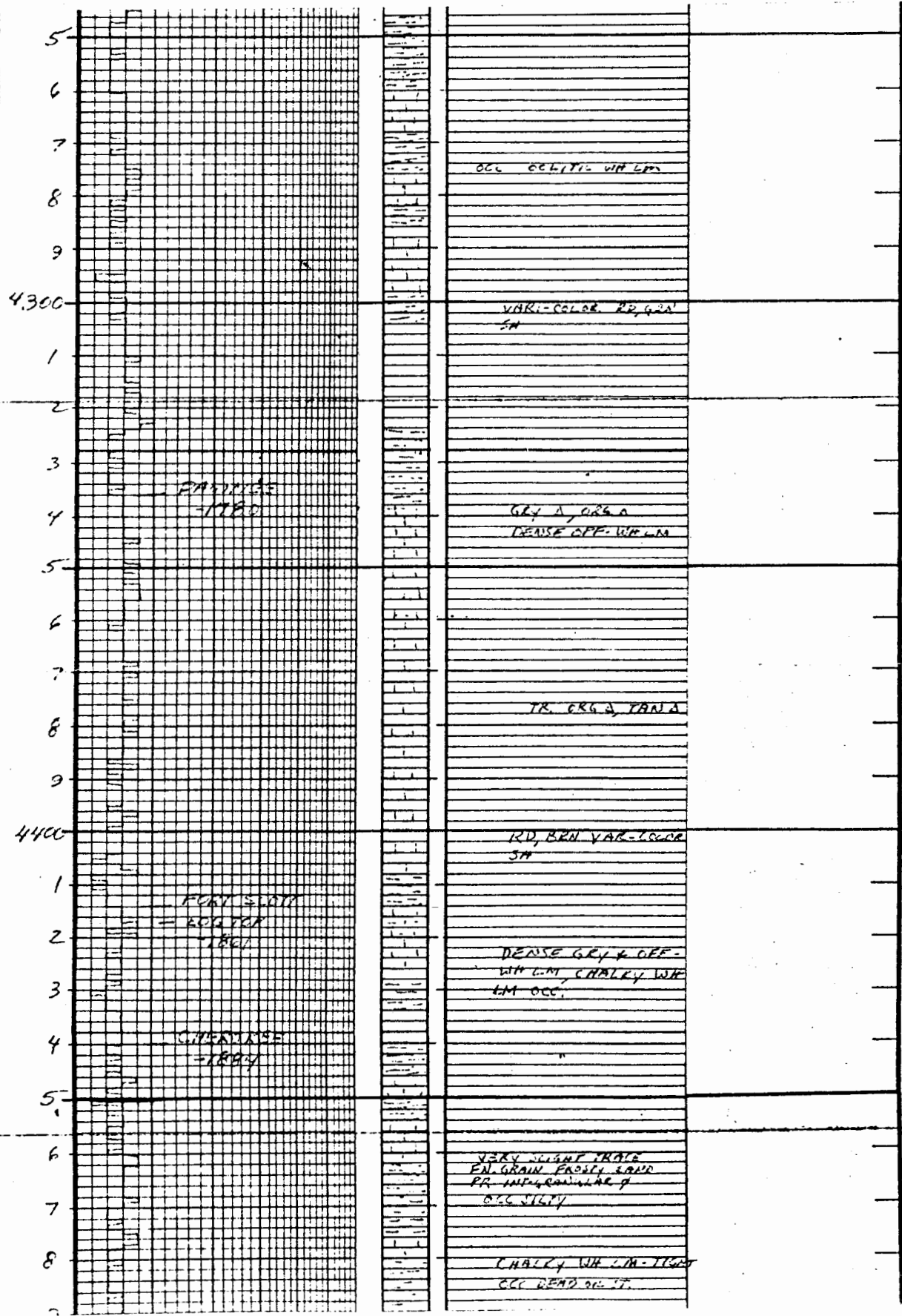
4200

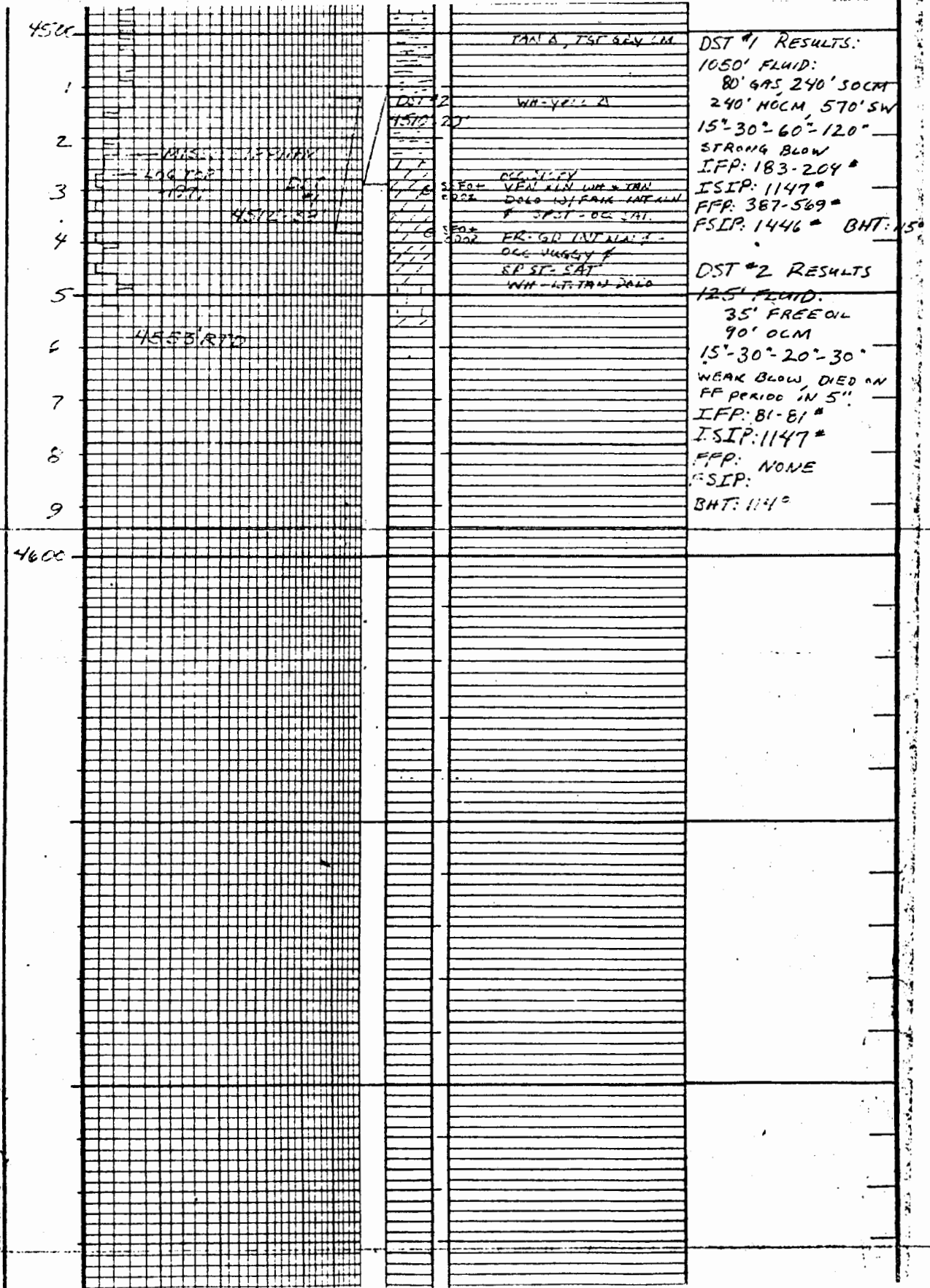


OLL OOLIC LIM - BARI  
NS

LIME, TANGY CHALKY LIM

BASE: BC  
TANGY





4500

1

2

3

4

5

6

7

8

9

4600

TAN A, TSG GEN LM

WA-YELL A

OIL SAT. 15%  
 V. FINE GR. SAND  
 D. 10-15%  
 SP. ST. SAT.  
 WH - LT TAN 240

**DST #1 RESULTS:**  
 1050' FLUID:  
 80' GAS 240' SOCMT  
 240' NOCM, 570' SW  
 15°-30°-60°-120°  
 STRONG BLOW  
 IIFP: 183-204"  
 ISIP: 1147"  
 FFP: 387-569"  
 FSIP: 1446" BHT: 150"

**DST #2 RESULTS**  
 125' FLUID:  
 35' FREE OIL  
 90' OCM  
 15°-30°-20°-30°  
 WEAK BLOW, DIED ON  
 FF PERIOD 'N 5"  
 IIFP: 81-81"  
 ISIP: 1147"  
 FFP: NONE  
 FSIP:  
 BHT: 114"

4553 RVD

DEPTH		LITHOLOGY	SAMPLE DESCRIPTIONS	REMARKS
	DRILLING TIME IN MINUTES/FOOT Rate of Penetration Increases			

COMPANY <u>PETROLEUM, I.N.C.</u>	ELEVATION: <u>2556' KB</u>
LEASE <u>#1 KALER</u>	
LOCATION <u>Q NENE</u> SEC. <u>14</u> TWP. <u>16S</u> RGE. <u>25W</u>	
COUNTY <u>NESS</u> STATE <u>KANSAS</u>	