

P.O. Box 169

Great Bend, Kansas 67530

Lease	Janssen	Well No.	1	Date	9/26/74
County	Ellsworth	Sec.	25	Twp.	16S Rng. 9W
Company	L.G. Stephenson			Test No.	1
Contractor	Red Tiger			Zone Tested	K.C.
Charge To	L.G. Stephenson			#1547	014
Approved By	Hammond			Tester	Floyd Bowman

Recorder No. 1620 Clock Range 12 Recorder No. 2826 Clock Range 12

Depth 2865 Depth 2868

Initial Hydro Mud Press. 1519 P.S.I.

Initial Flow Press. 13 To 27 P.S.I. Initial Flow Period 30 Min.

Initial Shut-in Press. 1011 P.S.I. Initial Shut-in 45 Min.

Final Flow Press. 50 To 93 P.S.I. Final Flow Period 60 Min.

Final Shut-in Press. 1005 P.S.I. Final Shut-in 90 Min.

Final Hydro Mud Press. 1437 P.S.I.

Temperature 108

Mud Weight 10.1 Viscosity 41

Fluid Loss 10.6

Interval Tested 2859 To 2871

Top Packer Depth 2854 Surface Choke Size

Bottom Packer Depth 2859 Bottom Choke Size 5/8

Total Depth 2859 Main Hole Size 7 7/8

Drill Pipe Size Wt Rubber Size 6 3/4

Drill Collar I.D. Ft. Run

Blow Strong Thru-Out Test

Recovery 10' Mud 120' Watery Mud 70' Salty Water

Damage Ratio

$$DR = .183 \frac{P_s - P_f}{m}$$

Initial

Final

Sun Oil Well Cementing, Inc.

DRILL STEM TEST DATA

P.O. Box 169

Great Bend, Kansas 67530

Lease	Jenssen	Well No.	1	Date	9/27/74
County	Ellsworth	Sec.	25	Twp.	16S
				Rng.	9W
Company	L.G. Stephenson			Test No.	2
Contractor	Red Tiger			Zone Tested	K.C.
Charge To	L.G. Stephenson			#	1548
					014
Approved By	Hammond			Tester	Floyd Bowman

Recorder No. 1620 Clock Range 12 Recorder No. 2826 Clock Range 12

Depth 2989 Depth 2992

Initial Hydro Mud Press. 1613 P.S.I.

Initial Flow Press. 19 To 19 P.S.I. Initial Flow Period 30 Min.

Initial Shut-in Press. 732 P.S.I. Initial Shut-in 45 Min.

Final Flow Press. 25 To 27 P.S.I. Final Flow Period 60 Min.

Final Shut-in Press. 220 P.S.I. Final Shut-in 45 Min.

Final Hydro Mud Press. 1541 P.S.I.

Temperature 105

Mud Weight 9.8 Viscosity 42

Fluid Loss 18

Interval Tested 2968 To 2995

Damage Ratio $DR = .183 \frac{Ps - Pf}{m}$ Initial _____ Final _____

Top Packer Depth 2963 Surface Choke Size _____

Bottom Packer Depth 2968 Bottom Choke Size 5/8

Total Depth 2995 Main Hole Size 7 7/8

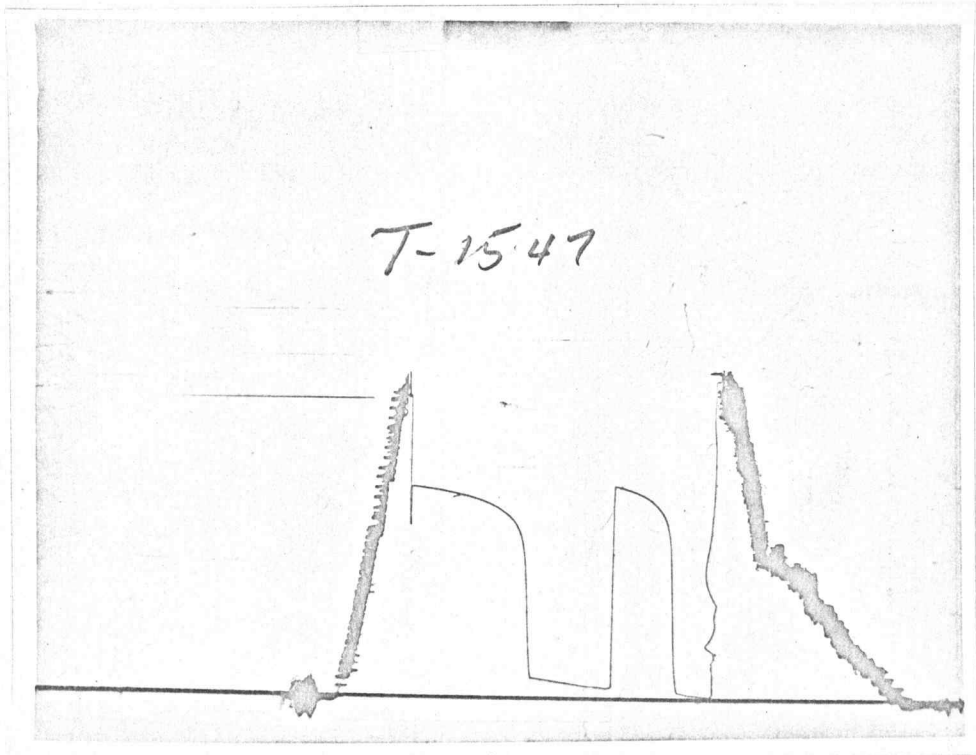
Drill Pipe Size _____ Wt _____ Rubber Size 6 3/4

Drill Collar I.D. _____ Ft. Run _____

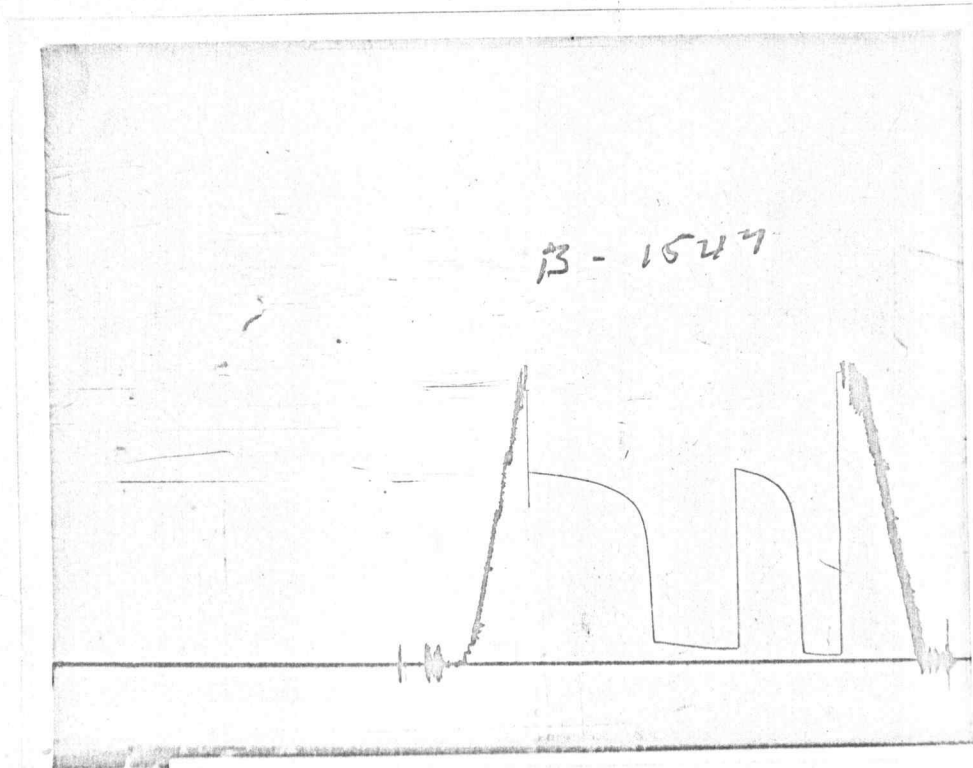
Blow Weak Dead In 25 Min.

Recovery 10' Hvy. Oil Specked Mud

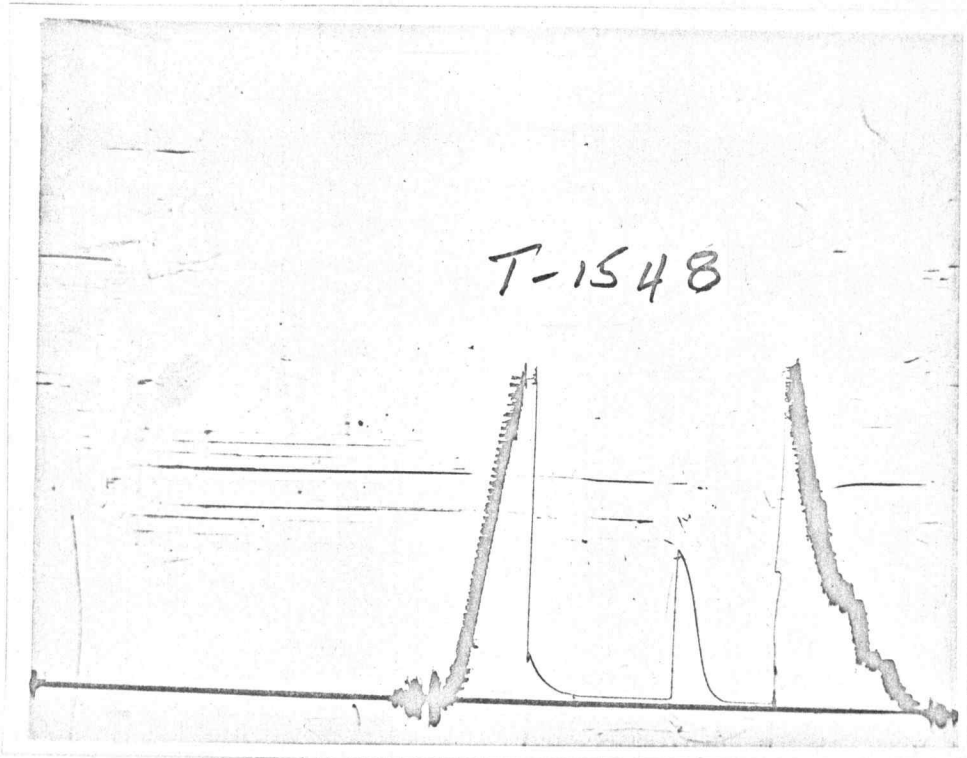
Top



Bottom



Top



Bottom

