

15-135-24721



DIAMOND TESTING

P.O. Box 157
HOISINGTON, KANSAS 67544
(620) 653-7550 • (800) 542-7313
STC 21083.D417

Company L. D. Drilling, Inc. Lease & Well No. Carlson No. 2-8

Elevation 2648KB Formation Lansing/Kansas City "H" - "J" Effective Pay -- Ft. Ticket No. J2220

Date 3-30-08 Sec. 8 Twp. 16S Range 26W County Ness State Kansas

Test Approved By Kim B. Shoemaker Diamond Representative John C. Riedl

Formation Test No. 1 Interval Tested from 4,087 ft. to 4,175 ft. Total Depth 4,175 ft.

Packer Depth 4,082 ft. Size 6 3/4 in. Packer Depth -- ft. Size -- in.

Packer Depth 4,087 ft. Size 6 3/4 in. Packer Depth -- ft. Size -- in.

Depth of Selective Zone Set ft.

Top Recorder Depth (Inside) 4,090 ft. Recorder Number 21083 Cap. 5,000 psi

Bottom Recorder Depth (Outside) 4,172 ft. Recorder Number 11073 Cap. 4,000 psi

Below Straddle Recorder Depth ft. Recorder Number Cap. psi

Drilling Contractor L. D. Drilling, Inc. - Rig 1 Drill Collar Length -- ft. I.D. -- in.

Mud Type Chemical Viscosity 51 Weight Pipe Length -- ft. I.D. -- in.

Weight 9.0 Water Loss 10.4 cc. Drill Pipe Length 4,067 ft. I.D. 3 1/2 in.

Chlorides 4,000 P.P.M. Test Tool Length 20 ft. Tool Size 3 1/2 - IF in.

Jars: Make Sterling Serial Number Not Run Anchor Length 88 ft. Size 4 1/2 - FH in.

Did Well Flow? No Reversed Out No Surface Choke Size 1 in. Bottom Choke Size 5/8 in.

Main Hole Size 7 7/8 in. Tool Joint Size 4 1/2 - XH in.

Blow: 1st Open: Weak blow, building to 2 ins. throughout. No blow back during shut-in.

2nd Open: Weak, 1 in., blow. No blow back during shut-in.

Recovered 45 ft. of drilling mud = .461700 bbls.

Recovered ft. of

Recovered ft. of

Recovered ft. of

Recovered ft. of

Remarks

Time Set Packer(s) 3:50 A.M. Time Started Off Bottom 5:50 A.M. Maximum Temperature 109°

Initial Hydrostatic Pressure (A) 2021 P.S.I.

Initial Flow Period Minutes 30 (B) 7 P.S.I. to (C) 21 P.S.I.

Initial Closed In Period Minutes 30 (D) 1121 P.S.I.

Final Flow Period Minutes 30 (E) 21 P.S.I. to (F) 31 P.S.I.

Final Closed In Period Minutes 30 (G) 1056 P.S.I.

Final Hydrostatic Pressure (H) 1964 P.S.I.

GENERAL INFORMATION

Client Information:

Company: L D DRILLING INC

Contact: L D DAVIS

Phone: Fax: e-mail:

Site Information:

Contact: KIM SHOEMAKER

Phone: Fax: e-mail:

Well Information:

Name: CARLSON #2-8

Operator: L D DRILLING INC

Location-Downhole: DST #1 4087 TO 4175

Location-Surface: S8/16S/26W NESS COUNTY

Test Information:

Company: DIAMOND TESTING

Representative: JOHN RIEDL

Supervisor: KIM SHOEMAKER

Test Type: CONVENTIONAL Job Number: D417

Test Unit: 2

Start Date: 2008/03/30 Start Time: 01:55:00

End Date: 2008/03/30 End Time: 07:45:00

Report Date: 2008/03/30 Prepared By: JOHN RIEDL

Qualified By: KIM SHOEMAKER

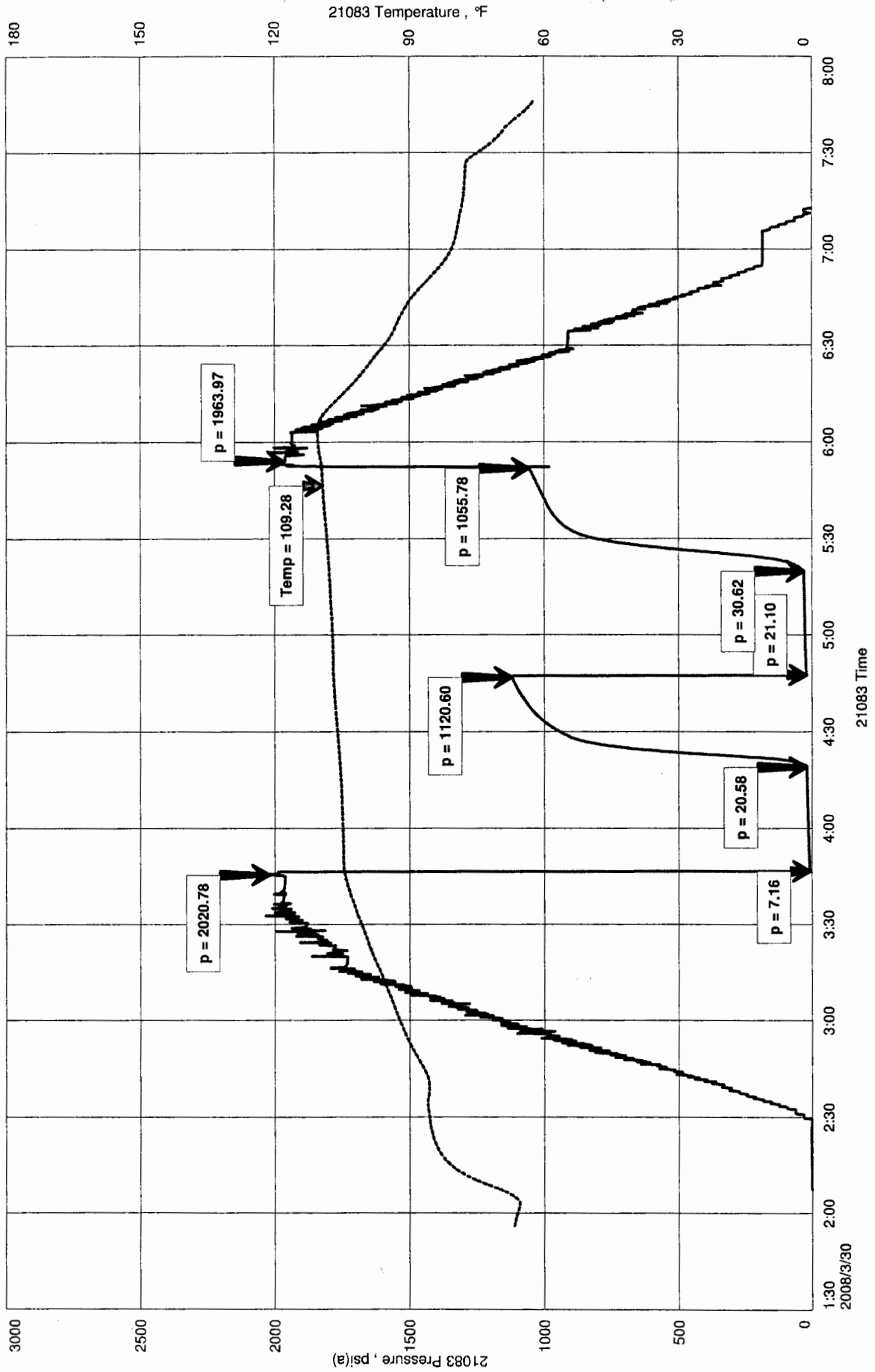
Remarks:

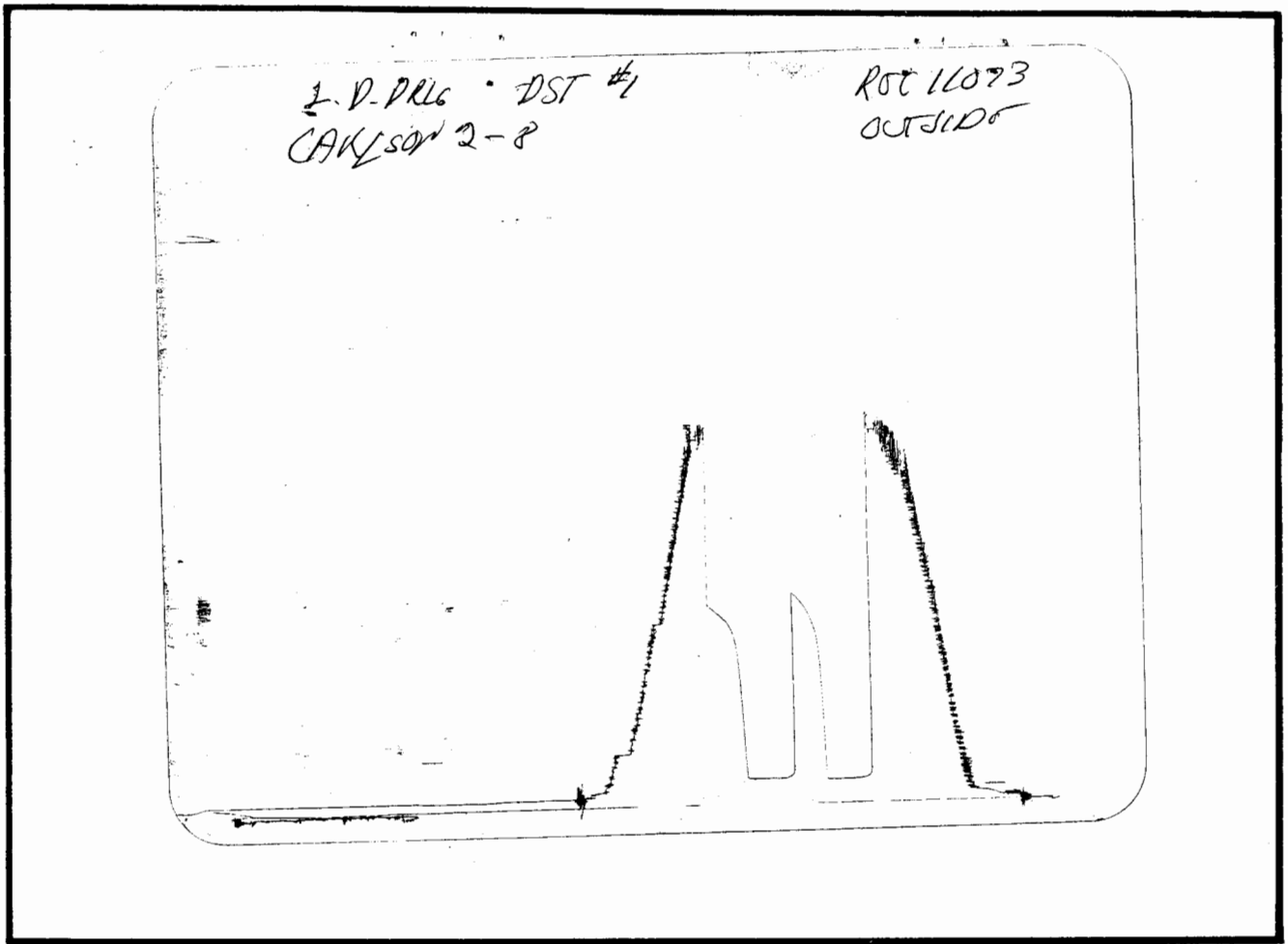
RECOVERY: 45' DRILLING MUD

CARLSON #2-8
 Formation: LKC "H,I,J"
 Job Number: D417

LD DRILLING INC
 DST #1 4087 TO 4175
 Start Test Date: 2008/03/30
 Final Test Date: 2008/03/30

CARLSON #2-8





This is an actual photograph of recorder chart.

POINT	PRESSURE Elec.		
	Field Reading	Office Reading	
(A) Initial Hydrostatic Mud	2021	2021	PSI
(B) First Initial Flow Pressure	7	7	PSI
(C) First Final Flow Pressure	21	21	PSI
(D) Initial Closed-in Pressure	1121	1121	PSI
(E) Second Initial Flow Pressure	21	21	PSI
(F) Second Final Flow Pressure	31	31	PSI
(G) Final Closed-in Pressure	1056	1056	PSI
(H) Final Hydrostatic Mud	1964	1964	PSI



DIAMOND TESTING

P.O. Box 157
HOISINGTON, KANSAS 67544
(620) 653-7550 • (800) 542-7313
STC 21083.D 418

Company L. D. Drilling, Inc. Lease & Well No. Carlson No. 2-8

Elevation 2648KB Formation Fort Scott Effective Pay -- Ft. Ticket No. J2221

Date 3-31-08 Sec. 8 Twp. 16S Range 26W County Ness State Kansas

Test Approved By Kim B. Shoemaker Diamond Representative John C. Riedl

Formation Test No. 2 Interval Tested from 4,417 ft. to 4,465 ft. Total Depth 4,465 ft.

Packer Depth 4,412 ft. Size 6 3/4 in. Packer Depth -- ft. Size -- in.

Packer Depth 4,417 ft. Size 6 3/4 in. Packer Depth -- ft. Size -- in.

Depth of Selective Zone Set ft.

Top Recorder Depth (Inside) 4,415 ft. Recorder Number 21083 Cap. 5,000 psi

Bottom Recorder Depth (Outside) 4,462 ft. Recorder Number 11073 Cap. 4,000 psi

Below Straddle Recorder Depth ft. Recorder Number Cap. psi

Drilling Contractor L. D. Drilling, Inc. - Rig 1 Drill Collar Length -- ft. I.D. -- in.

Mud Type Chemical Viscosity 48 Weight Pipe Length -- ft. I.D. -- in.

Weight 9.4 Water Loss 9.6 cc. Drill Pipe Length 4,397 ft. I.D. 3 1/2 in.

Chlorides 4,000 P.P.M. Test Tool Length 20 ft. Tool Size 3 1/2 - IF in.

Jars: Make Sterling Serial Number Not Run Anchor Length 48 ft. Size 4 1/2 - FH in.

Did Well Flow? No Reversed Out No Surface Choke Size 1 in. Bottom Choke Size 5/8 in.

Main Hole Size 7 7/8 in. Tool Joint Size 4 1/2 - XH in.

Blow: 1st Open: Weak blow, slowly building to 1/2 in. No blow back during shut-in.
2nd Open: No blow.

Recovered 8 ft. of drilling mud = .082080 bbls.

Recovered ft. of

Recovered ft. of

Recovered ft. of

Recovered ft. of

Remarks

Time Set Packer(s) 4:15 ~~AM~~ P.M. Time Started Off Bottom 5:20 ~~AM~~ P.M. Maximum Temperature 111°

Initial Hydrostatic Pressure (A) 2160 P.S.I.

Initial Flow Period Minutes 30 (B) 8 P.S.I. to (C) 12 P.S.I.

Initial Closed In Period Minutes 30 (D) 100 P.S.I.

Final Flow Period Minutes 5 (E) 6 P.S.I. to (F) 10 P.S.I.

Final Closed In Period Minutes -- (G) -- P.S.I.

Final Hydrostatic Pressure (H) 2145 P.S.I.

GENERAL INFORMATION

Client Information:

Company: L D DRILLING INC

Contact: L D DAVIS

Phone: Fax: e-mail:

Site Information:

Contact: KIM SHOEMAKER

Phone: Fax: e-mail:

Well Information:

Name: CARLSON#2-8

Operator: L D DRILLING INC

Location-Downhole: DST #2 4417 TO 4465

Location-Surface: S8/16S/26W NESS COUNTY

Test Information:

Company: DIAMOND TESTING

Representative: JOHN RIEDL

Supervisor: KIM SHOEMAKER

Test Type: CONVENTIONAL Job Number: D418

Test Unit: 2

Start Date: 2008/03/31 Start Time: 13:30:00

End Date: 2008/03/31 End Time: 18:45:00

Report Date: 2008/03/31 Prepared By: JOHN RIEDL

Qualified By: KIM SHOEMAKER

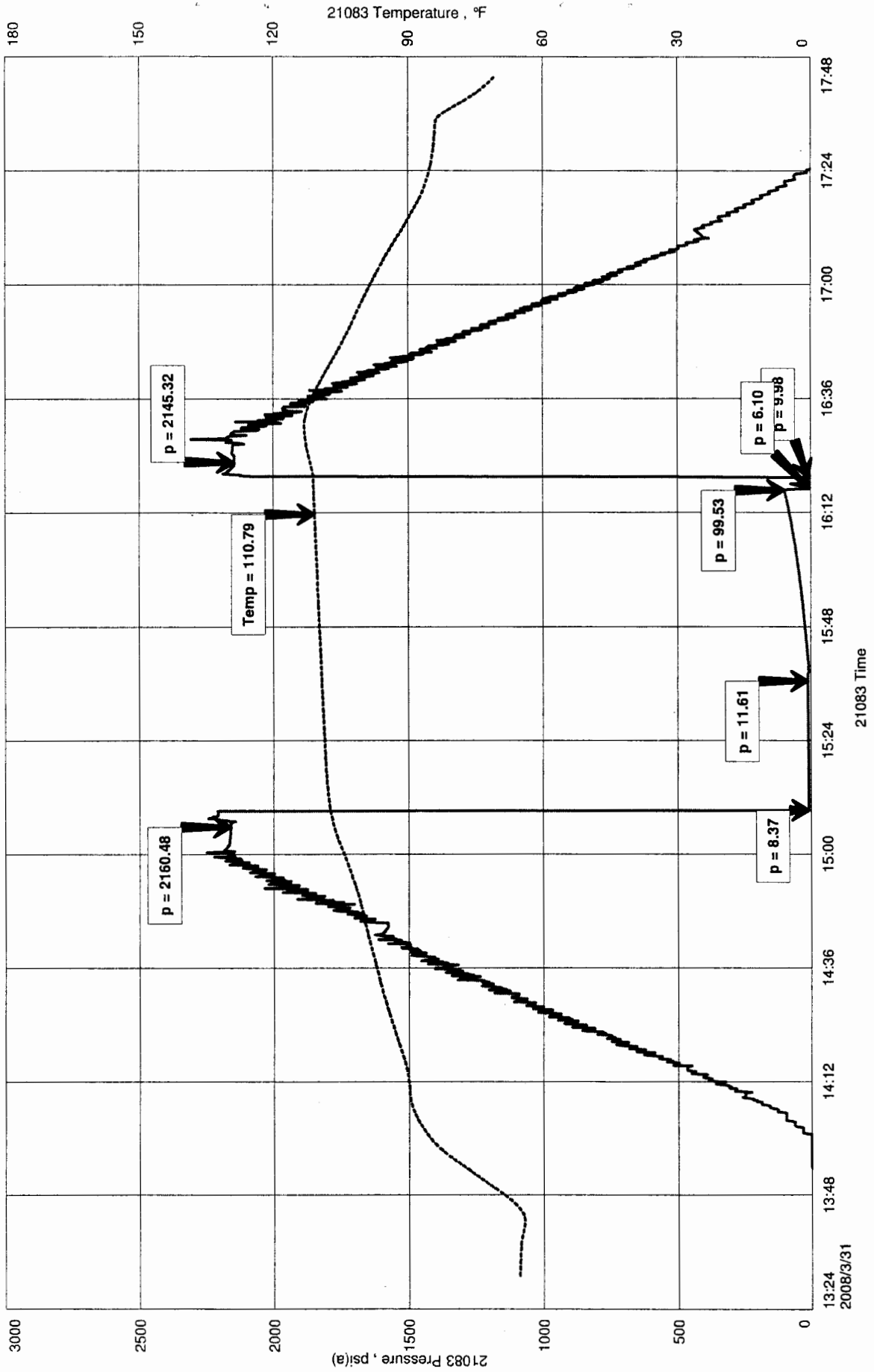
Remarks:

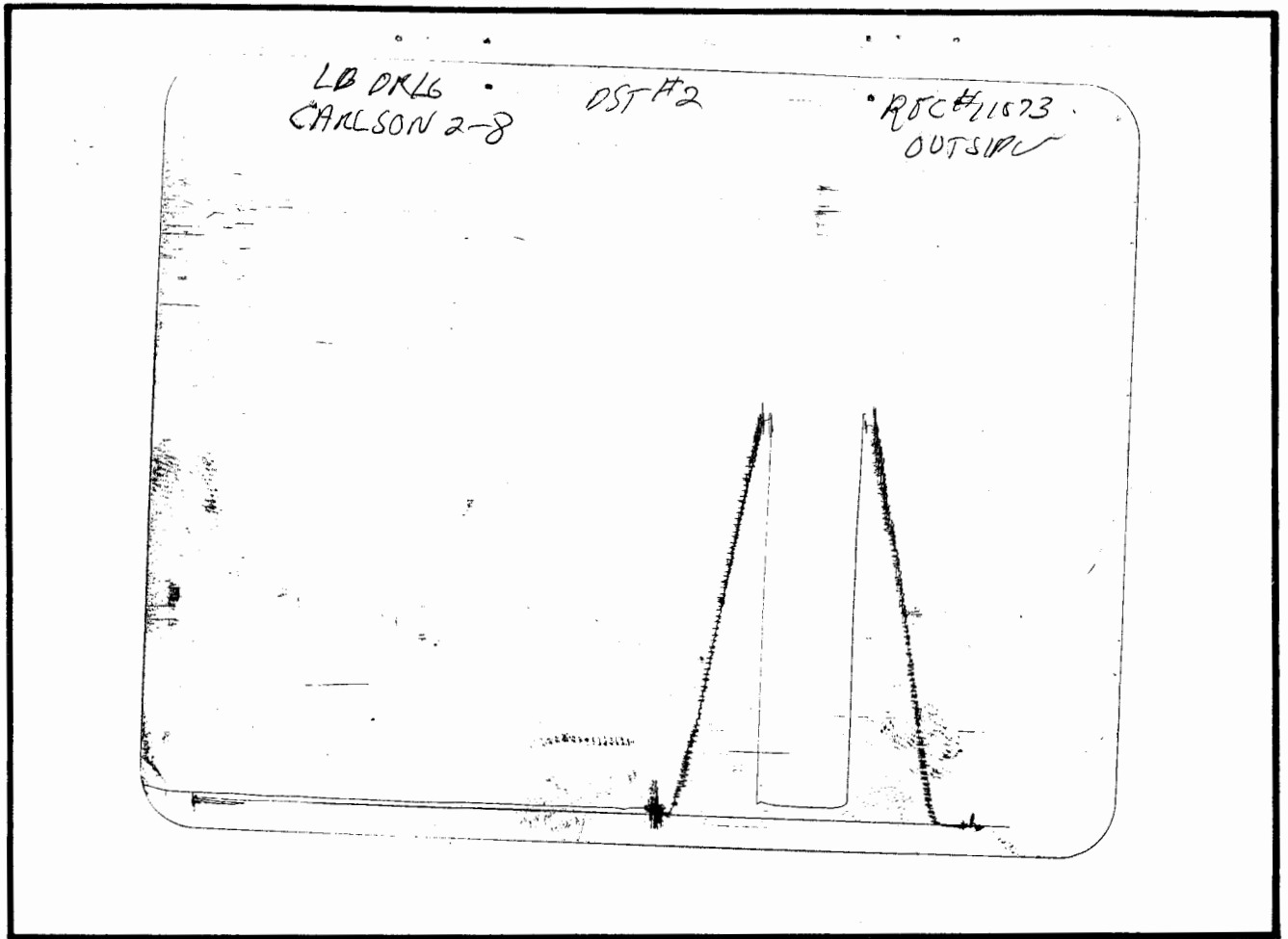
RECOVERY: 8' DRILLING MUD

CARLSON#2-8
Formation: FORT SCOTT
Job Number: D418

L D DRILLING INC
DST #2 4417 TO 4465
Start Test Date: 2008/03/31
Final Test Date: 2008/03/31

CARLSON#2-8





This is an actual photograph of recorder chart.

POINT	PRESSURE		Elec. Office Reading	PSI
	Field Reading			
(A) Initial Hydrostatic Mud	2160	2160		PSI
(B) First Initial Flow Pressure	8	8		PSI
(C) First Final Flow Pressure	12	12		PSI
(D) Initial Closed-in Pressure	100	100		PSI
(E) Second Initial Flow Pressure	6	6		PSI
(F) Second Final Flow Pressure	10	10		PSI
(G) Final Closed-in Pressure	--	--		PSI
(H) Final Hydrostatic Mud	2145	2145		PSI



DIAMOND TESTING
P.O. Box 157
HOISINGTON, KANSAS 67544
(620) 653-7550 • (800) 542-7313
STC 21083.D 419

Company L. D. Drilling, Inc. Lease & Well No. Carlson No. 2-8
Elevation 2648KB Formation Mississippi Effective Pay -- Ft. Ticket No. J2222
Date 4-01-08 Sec. 8 Twp. 16S Range 26W County Ness State Kansas
Test Approved By Kim B. Shoemaker Diamond Representative John C. Riedl

Formation Test No. 3 Interval Tested from 4,544 ft. to 4,575 ft. Total Depth 4,575 ft.
Packer Depth 4,539 ft. Size 6 3/4 in. Packer Depth -- ft. Size -- in.
Packer Depth 4,544 ft. Size 6 3/4 in. Packer Depth -- ft. Size -- in.
Depth of Selective Zone Set ft.

Top Recorder Depth (Inside) 4,547 ft. Recorder Number 21083 Cap. 5,000 psi
Bottom Recorder Depth (Outside) 4,572 ft. Recorder Number 11073 Cap. 4,000 psi
Below Straddle Recorder Depth ft. Recorder Number Cap. psi

Drilling Contractor L. D. Drilling, Inc. - Rig 1 Drill Collar Length -- ft. I.D. -- in.
Mud Type Chemical Viscosity 50 Weight Pipe Length -- ft. I.D. -- in.
Weight 9.4 Water Loss 9.0 cc. Drill Pipe Length 4,424 ft. I.D. 3 1/2 in.
Chlorides 4,000 P.P.M. Test Tool Length 20 ft. Tool Size 3 1/2 - IF in.
Jars: Make Sterling Serial Number Not Run Anchor Length 31 ft. Size 4 1/2 - FH in.
Did Well Flow? No Reversed Out No Surface Choke Size 1 in. Bottom Choke Size 5/8 in.
Main Hole Size 7 7/8 in. Tool Joint Size 4 1/2 - XH in.

Blow: 1st Open: Weak, 3/4 in., blow. No blow back during shut-in.
2nd Open: Weak, 1/4 in., blow. No blow back during shut-in.

Recovered 1 ft. of free oil = .01026 bbls.
Recovered 14 ft. of oil cut mud = .143640 bbls. (Grind out; 20%-oil; 80%-mud)
Recovered 15 ft. of TOTAL FLUID = .153900 bbls.
Recovered ft. of
Recovered ft. of
Remarks

Time Set Packer(s) 10:25 ~~XXX~~ ^{A.M.} Time Started Off Bottom 12:25 ~~XXX~~ ^{P.M.} Maximum Temperature 114°
Initial Hydrostatic Pressure (A) 2248 P.S.I.
Initial Flow Period Minutes 30 (B) 6 P.S.I. to (C) 10 P.S.I.
Initial Closed In Period Minutes 30 (D) 830 P.S.I.
Final Flow Period Minutes 30 (E) 13 P.S.I. to (F) 15 P.S.I.
Final Closed In Period Minutes 30 (G) 650 P.S.I.
Final Hydrostatic Pressure (H) 2195 P.S.I.

GENERAL INFORMATION

Client Information:

Company: L D DRILLING INC

Contact: L D AVIS

Phone:

Fax:

e-mail:

Site Information:

Contact: KIM SHOEMAKER

Phone:

Fax:

e-mail:

Well Information:

Name: CARLSON #2-8

Operator: L D DRILLING INC

Location-Downhole: DST#3 4544 TO 4575

Location-Surface: S8/16S/26W NESS COUNTY

Test Information:

Company: DIAMOND TESTING

Representative: JOHN RIEDL

Supervisor: KIM SHOEMAKER

Test Type: CONVNETIONAL

Job Number: D419

Test Unit: 2

Start Date: 2008/04/01

Start Time: 08:45:00

End Date: 2008/04/01

End Time: 14:25:00

Report Date: 2008/04/01

Prepared By: JOHN RIEDL

Remarks:

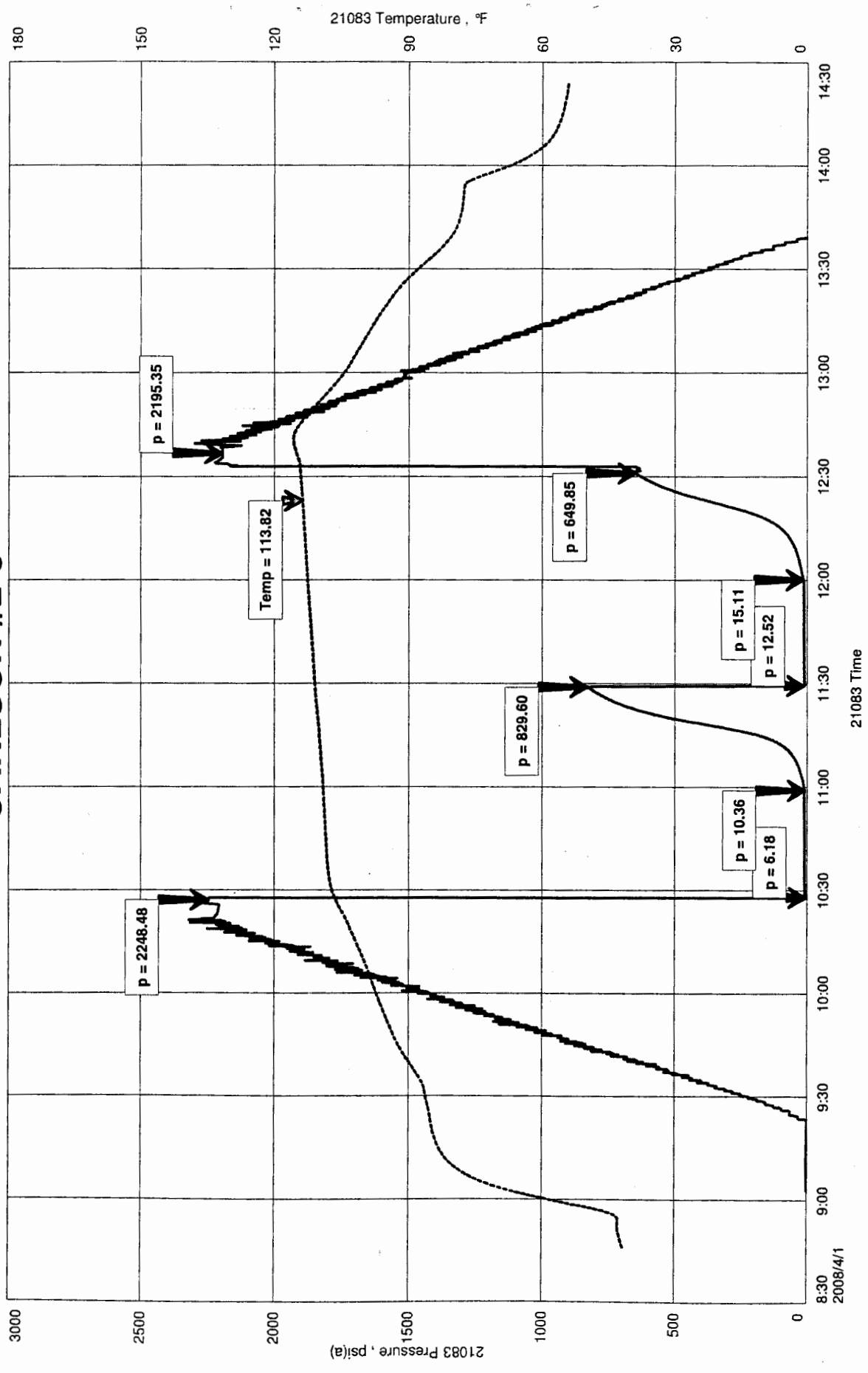
Qualified By: KIM SHOEMAKER

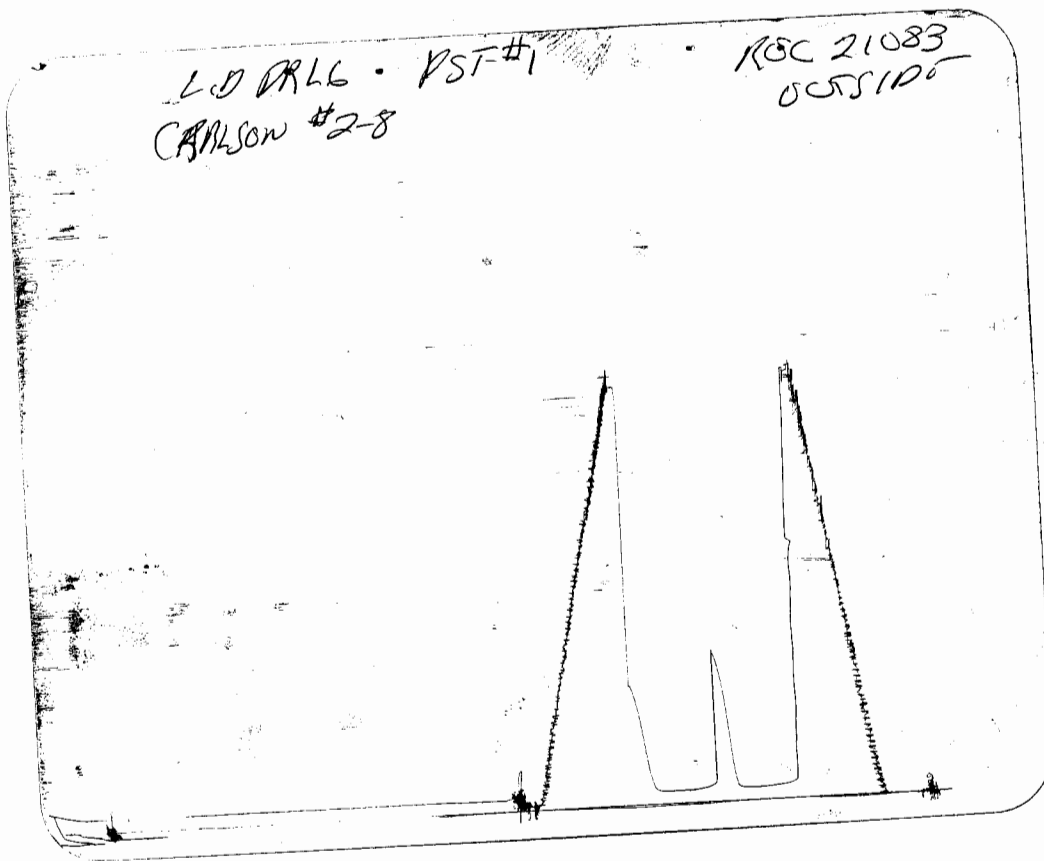
RECOVERY: 1' FREE OIL
14' OCM (20%OIL 80%MUD)
TOTAL FLUID REC. 15'

CARLSON #2-8
Formation: MISSISSIPPI
Job Number: D419

L D DRILLING INC
DST#3 4544 to 4575
Start Test Date: 2008/04/01
Final Test Date: 2008/04/01

CARLSON #2-8





This is an actual photograph of recorder chart.

POINT	PRESSURE		Elec. Office Reading	PSI
	Field Reading			
(A) Initial Hydrostatic Mud	224.8	224.8		PSI
(B) First Initial Flow Pressure	6	6		PSI
(C) First Final Flow Pressure	10	10		PSI
(D) Initial Closed-in Pressure	83.0	83.0		PSI
(E) Second Initial Flow Pressure	13	13		PSI
(F) Second Final Flow Pressure	15	15		PSI
(G) Final Closed-in Pressure	65.0	65.0		PSI
(H) Final Hydrostatic Mud	219.5	219.5		PSI



DIAMOND TESTING

P.O. Box 157
HOISINGTON, KANSAS 67544
(620) 653-7550 • (800) 542-7313
STC 21083.D420

Company L. D. Drilling, Inc. Lease & Well No. Carlson No. 2-8

Elevation 2648KB Formation Lansing/Kansas City Effective Pay --- Ft. Ticket No. J2223

Date 4-02-08 Sec. 8 Twp. 16S Range 26W County Ness State Kansas

Test Approved By Kim B. Shoemaker Diamond Representative John C. Riedl

Formation Test No. 4 Interval Tested from 4,214 ft. to 4,239 ft. Total Depth 4,586 ft.

Packer Depth 4,209 ft. Size 6 3/4 in. Packer Depth 4,239 ft. Size 6 3/4 in.

Packer Depth 4,214 ft. Size 6 3/4 in. Packer Depth --- ft. Size --- in.

Depth of Selective Zone Set --- ft.

Top Recorder Depth (Inside) 4,217 ft. Recorder Number 21083 Cap. 5,000 psi

Bottom Recorder Depth (Outside) 4,230 ft. Recorder Number 11017 Cap. 4,000 psi

Below Straddle Recorder Depth 4,583 ft. Recorder Number 11073 Cap. 4,000 psi

Drilling Contractor L. D. Drilling, Inc. - Rig 1 Drill Collar Length --- ft. I.D. --- in.

Mud Type Chemical Viscosity 50 Weight Pipe Length --- ft. I.D. --- in.

Weight 9.4 Water Loss 9.0 cc. Drill Pipe Length 4,188 ft. I.D. 3 1/2 in.

Chlorides 4,000 P.P.M. Test Tool Length 26 ft. Tool Size 3 1/2 - IF in.

Jars: Make Sterling Serial Number 2 Anchor Length 25' perf. w/ 347' tail pipe Size 4 1/2 - FH in.

Did Well Flow? No Reversed Out No Surface Choke Size 1 in. Bottom Choke Size 5/8 in.

Main Hole Size 7 7/8 in. Tool Joint Size 4 1/2 - XH in.

Blow: 1st Open: Weak, 1/2 in., blow. No blow back during shut-in.

2nd Open: No blow. No blow back during shut-in.

Recovered 20 ft. of very slightly oil cut mud = .205200 bbls. (Grind out: 2%-oil; 98%-mud)

Recovered --- ft. of ---

Recovered --- ft. of ---

Recovered --- ft. of ---

Recovered --- ft. of ---

Remarks ---

Time Set Packer(s) 1:45 ~~P.M.~~ ^{A.M.} Time Started Off Bottom 2:45 ~~P.M.~~ ^{A.M.} Maximum Temperature 108°

Initial Hydrostatic Pressure (A) 2091 P.S.I.

Initial Flow Period Minutes 30 (B) 6 P.S.I. to (C) 19 P.S.I.

Initial Closed In Period Minutes 30 (D) 1082 P.S.I.

Final Flow Period Minutes --- (E) --- P.S.I. to (F) --- P.S.I.

Final Closed In Period Minutes --- (G) --- P.S.I.

Final Hydrostatic Pressure (H) 2043 P.S.I.

GENERAL INFORMATION

Client Information:

Company: L D DRILLING INC

Contact: L D DAVIS

Phone: Fax: e-mail:

Site Information:

Contact: KIM SHOEMAKER

Phone: Fax: e-mail:

Well Information:

Name: CARLSON #2-8

Operator: L D DRILLING INC

Location-Downhole: DST #4 4214 TO 4239 TD 4586

Location-Surface: S8/16S/26W NESS COUNTY

Test Information:

Company: DIAMOND TESTING

Representative: JOHN RIEDL

Supervisor: KIM SHOEMAKER

Test Type: STRADDLE Job Number: D420

Test Unit: 2

Start Date: 2008/04/01 Start Time: 23:00:00

End Date: 2008/04/02 End Time: 03:20:00

Report Date: 2008/04/02 Prepared By: JOHN RIEDL

Qualified By: KIM SHOEMAKER

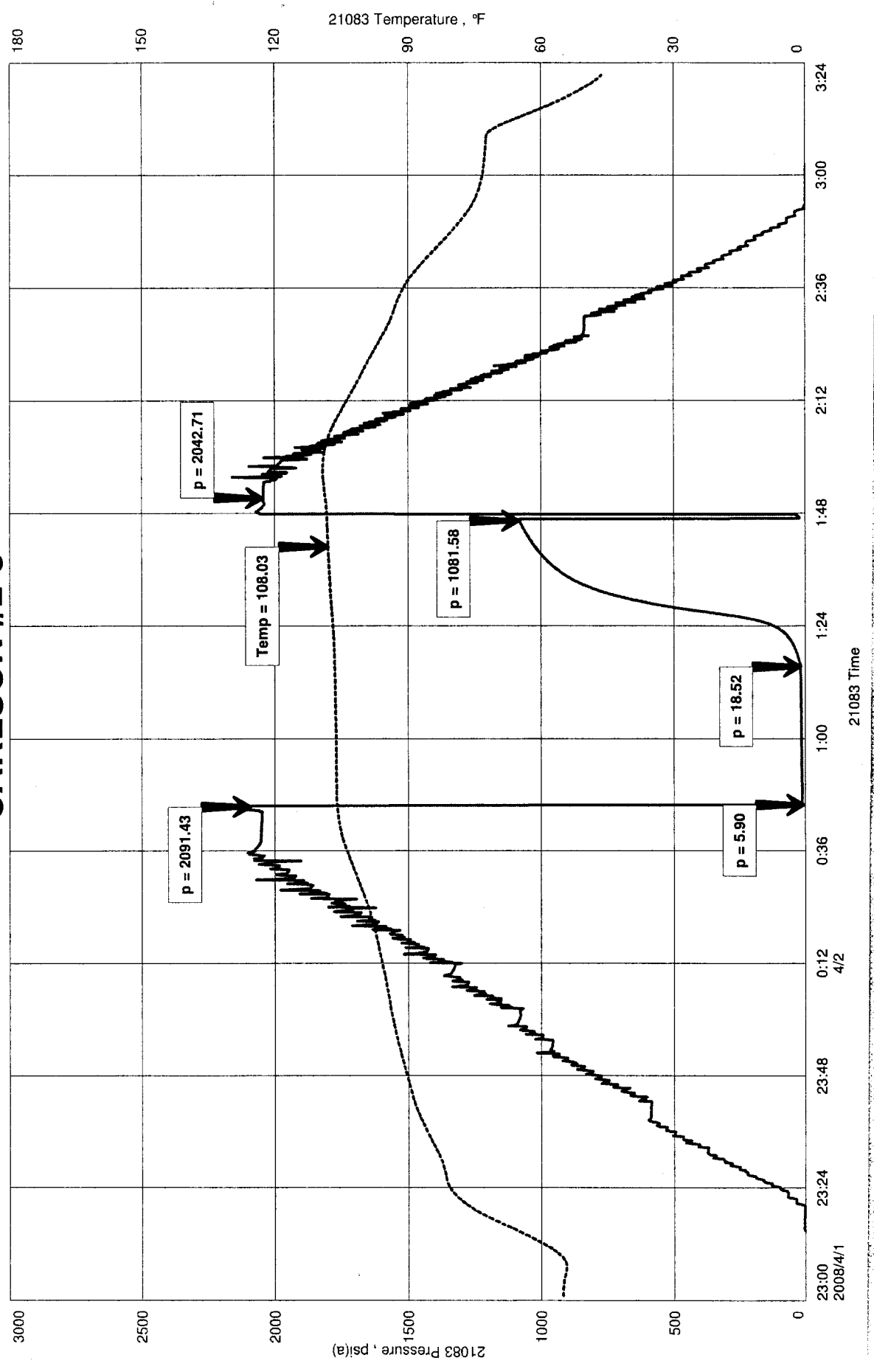
Remarks:

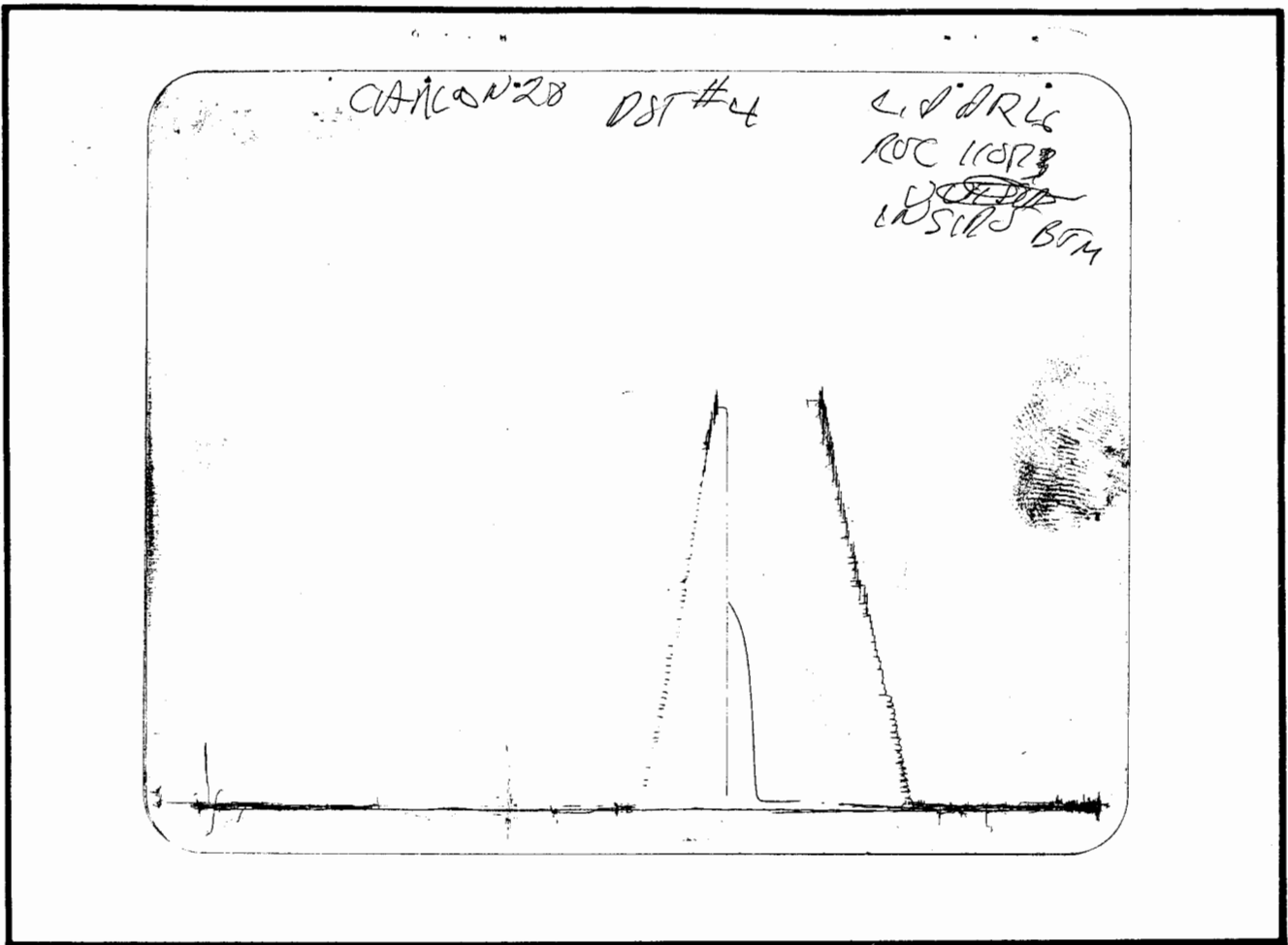
RECOVERY: 20' VERY SLIGHTLY OIL CUT MUD

CARLSON #2-8
Formation: LKC
Job Number: D420

L D DRILLING INC
DST #4 4214 TO 4239 TD 4586
Start Test Date: 2008/04/01
Final Test Date: 2008/04/02

CARLSON #2-8





This is an actual photograph of recorder chart.

POINT	PRESSURE		
	Field Reading	Elec. Office Reading	
(A) Initial Hydrostatic Mud	2091	2091	PSI
(B) First Initial Flow Pressure.....	6	6	PSI
(C) First Final Flow Pressure	19	19	PSI
(D) Initial Closed-in Pressure	1082	1082	PSI
(E) Second Initial Flow Pressure	--	--	PSI
(F) Second Final Flow Pressure.....	--	--	PSI
(G) Final Closed-in Pressure	--	--	PSI
(H) Final Hydrostatic Mud	2043	2043	PSI

WOODRUFF
CARSON'S

PST #4

APR 1973
BLOV
SFRAPLO

