

15-135-24808

9-165-26w

### DIAMOND TESTING

P.O. Box 157

HOISINGTON, KANSAS 67544

(620) 653-7550 • (800) 542-7313

STC 21083.D 445

Company L. D. Drilling, Inc. Lease & Well No. Bill No. 1-9

Elevation 2643 KB Formation Lansing/Kansas City "H" - "K" Effective Pay -- Ft. Ticket No. J2248

Date 6-15-08 Sec. 9 Twp. 16S Range 26W County Ness State Kansas

Test Approved By Kim B. Shoemaker Diamond Representative John C. Riedl

Formation Test No. 1 Interval Tested from 4,080 ft. to 4,160 ft. Total Depth 4,160 ft.

Packer Depth 4,075 ft. Size 6 3/4 in. Packer Depth -- ft. Size -- in.

Packer Depth 4,080 ft. Size 6 3/4 in. Packer Depth -- ft. Size -- in.

Depth of Selective Zone Set          ft.

Top Recorder Depth (Inside) 4,083 ft. Recorder Number 21083 Cap. 5,000 psi

Bottom Recorder Depth (Outside) 4,157 ft. Recorder Number 11017 Cap. 4,000 psi

Below Straddle Recorder Depth          ft. Recorder Number          Cap.          psi

Drilling Contractor Duke Drilling Co., Inc. - Rig 4 Drill Collar Length -- ft. I.D. -- in.

Mud Type Chemical Viscosity 47 Weight Pipe Length -- ft. I.D. -- in.

Weight 9.1 Water Loss 9.2 cc. Drill Pipe Length 4,060 ft. I.D. 3 1/2 in.

Chlorides 2,800 P.P.M. Test Tool Length 20 ft. Tool Size 3 1/2 - IF in.

Jars: Make Sterling Serial Number Not Run Anchor Length 80 ft. Size 4 1/2 - FH in.

Did Well Flow? No Reversed Out No Surface Choke Size 1 in. Bottom Choke Size 5/8 in.

Main Hole Size 7 7/8 in. Tool Joint Size 4 1/2 - XH in.

Blow: 1st Open: Weak, 1 in., blow.

2nd Open: Weak, 3/4 in., blow.

Recovered 40 ft. of very slightly oil cut mud = .515200 bbls. (Grind out: 1%-oil; 99%-mud)

Recovered          ft. of         

Recovered          ft. of         

Recovered          ft. of         

Recovered          ft. of         

Remarks         

Time Set Packer(s) 9:35 ~~AM~~ P.M. Time Started Off Bottom 11:35 ~~AM~~ P.M. Maximum Temperature 114°

Initial Hydrostatic Pressure ..... (A) 1938 P.S.I.

Initial Flow Period ..... Minutes 30 (B) 4 P.S.I. to (C) 21 P.S.I.

Initial Closed In Period ..... Minutes 30 (D) 1207 P.S.I.

Final Flow Period ..... Minutes 30 (E) 22 P.S.I. to (F) 31 P.S.I.

Final Closed In Period ..... Minutes 30 (G) 1174 P.S.I.

Final Hydrostatic Pressure ..... (H) 1919 P.S.I.

## GENERAL INFORMATION

### Client Information:

Company: L D DRILLING INC  
Contact: L D DAVIS  
Phone: Fax: e-mail:

### Site Information:

Contact: KIM SHOEMAKER  
Phone: Fax: e-mail:

### Well Information:

Name: BILL #1-9  
Operator: L D DRILLING INC  
Location-Downhole: DST #1 4080 TO 4160  
Location-Surface: S9/16S/26W

### Test Information:

Company: DIAMOND TESTING  
Representative: JOHN RIEDL  
Supervisor: KIM SHOEMAKER  
Test Type: CONVENTIONAL Job Number: D445  
Test Unit: 2  
Start Date: 2008/06/15 Start Time: 19:35:00  
End Date: 2008/06/16 End Time: 02:00:00  
Report Date: 2008/06/16 Prepared By: JOHN RIEDL  
Qualified By: KIM SHOEMAKER

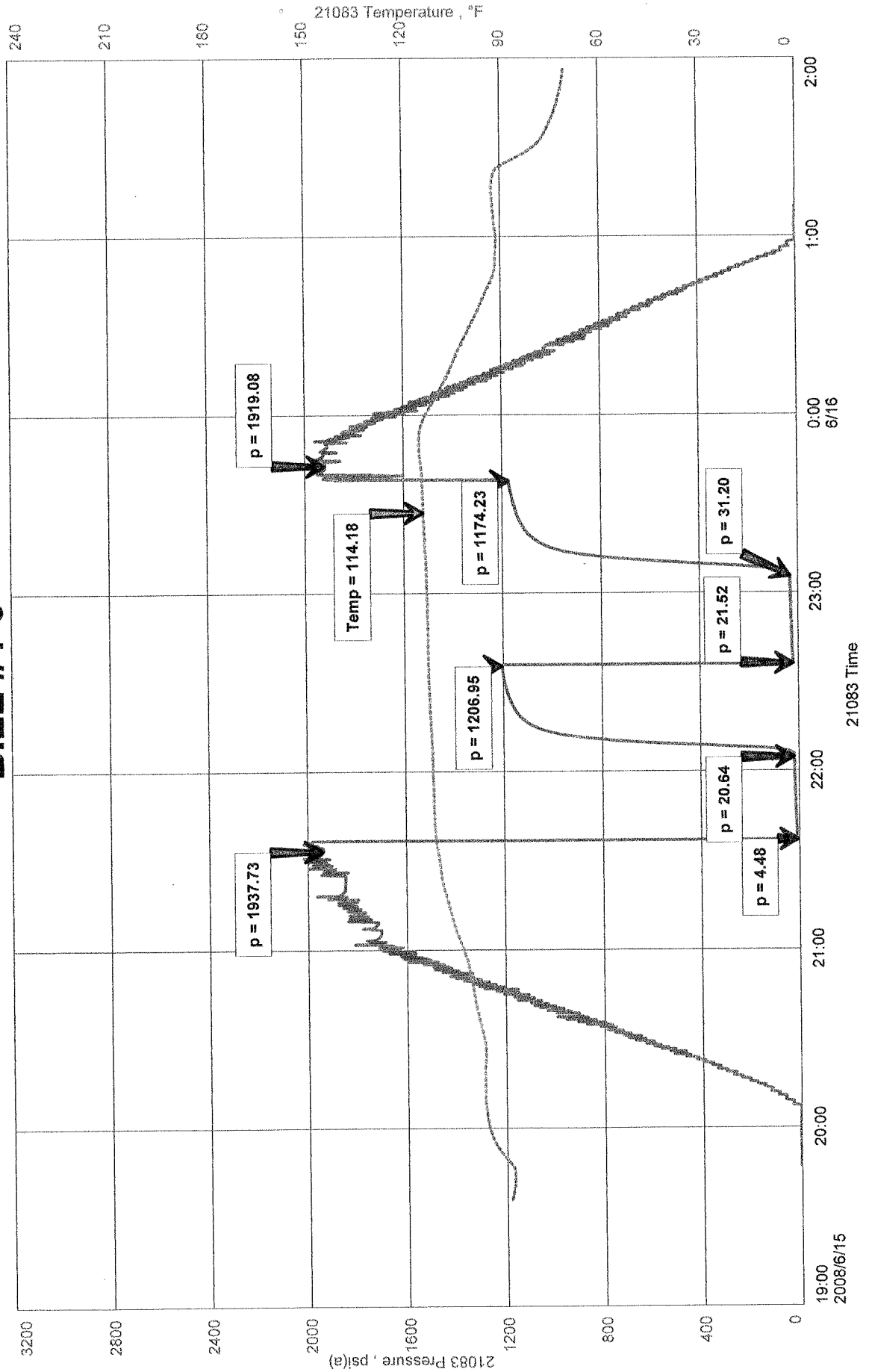
### Remarks:

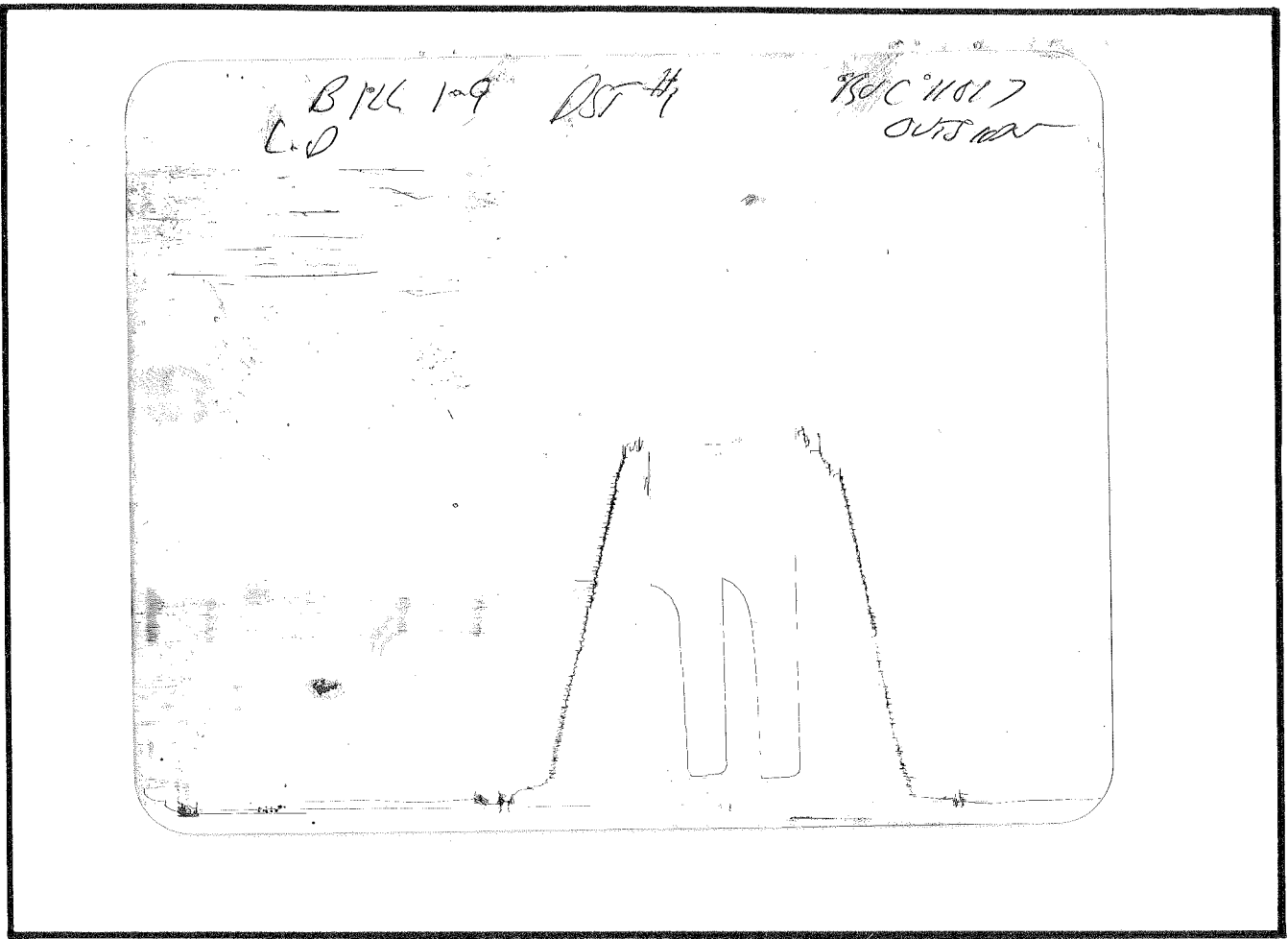
RECOVERY( 40' VERY SLIGHTLY OIL CUT MUD

BILL #1-9  
Formation: LKC "H THRU J"  
Job Number: D445

LD DRILLING INC  
DST #1 4080 TO 4160  
Start Test Date: 2008/06/15  
Final Test Date: 2008/06/16

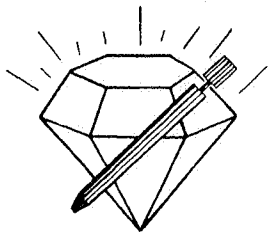
# BILL #1-9





This is an actual photograph of recorder chart.

POINT	PRESSURE		PSI
	Field Reading	Elec. Office Reading	
(A) Initial Hydrostatic Mud	1938	1938	PSI
(B) First Initial Flow Pressure	4	4	PSI
(C) First Final Flow Pressure	21	21	PSI
(D) Initial Closed-in Pressure	1207	1207	PSI
(E) Second Initial Flow Pressure	22	22	PSI
(F) Second Final Flow Pressure	31	31	PSI
(G) Final Closed-in Pressure	1174	1174	PSI
(H) Final Hydrostatic Mud	1919	1919	PSI



# DIAMOND TESTING

P.O. Box 157  
HOISINGTON, KANSAS 67544  
(620) 653-7550 • (800) 542-7313  
STC 21083.D446

Company L. D. Drilling, Inc. Lease & Well No. Bill No. 1-9

Elevation 2643 KB Formation Mississippi Effective Pay -- Ft. Ticket No. J2249

Date 6-17-08 Sec. 9 Twp. 16S Range 26W County Ness State Kansas

Test Approved By Kim B. Shoemaker Diamond Representative John C. Riedl

Formation Test No. 2 Interval Tested from 4,498 ft. to 4,545 ft. Total Depth 4,545 ft.

Packer Depth 4,493 ft. Size 6 3/4 in. Packer Depth -- ft. Size -- in.

Packer Depth 4,498 ft. Size 6 3/4 in. Packer Depth -- ft. Size -- in.

Depth of Selective Zone Set          ft.

Top Recorder Depth (Inside) 4,501 ft. Recorder Number 21083 Cap. 5,000 psi

Bottom Recorder Depth (Outside) 4,542 ft. Recorder Number 11017 Cap. 4,000 psi

Below Straddle Recorder Depth          ft. Recorder Number          Cap.          psi

Drilling Contractor Duke Drilling Co., Inc. - Rig 4 Drill Collar Length -- ft. I.D. -- in.

Mud Type Chemical Viscosity 43 Weight Pipe Length -- ft. I.D. -- in.

Weight 9.3 Water Loss 9.0 cc. Drill Pipe Length 4,472 ft. I.D. 3 1/2 in.

Chlorides 3,000 P.P.M. Test Tool Length 26 ft. Tool Size 3 1/2 - IF in.

Jars: Make Sterling Serial Number 2 Anchor Length 47 ft. Size 4 1/2 - FH in.

Did Well Flow? No Reversed Out No Surface Choke Size 1 in. Bottom Choke Size 5/8 in.

Main Hole Size 7 7/8 in. Tool Joint Size 4 1/2 - XH in.

Blow: 1st Open: Weak, 1/2 in., blow.

2nd Open: Weak, 1/2 in., blow.

Recovered 20 ft. of slightly oil cut mud = .257600 bbls. (Grind out: 5%-oil; 95%-mud)

Recovered          ft. of         

Recovered          ft. of         

Recovered          ft. of         

Recovered          ft. of         

Remarks         

Time Set Packer(s) 5:55 ~~AM~~ P.M. Time Started Off Bottom 7:55 ~~AM~~ P.M. Maximum Temperature 117°

Initial Hydrostatic Pressure ..... (A) 2180 P.S.I.

Initial Flow Period ..... Minutes 30 (B) 11 P.S.I. to (C) 16 P.S.I.

Initial Closed In Period ..... Minutes 30 (D) 906 P.S.I.

Final Flow Period ..... Minutes 30 (E) 18 P.S.I. to (F) 20 P.S.I.

Final Closed In Period ..... Minutes 30 (G) 686 P.S.I.

Final Hydrostatic Pressure ..... (H) 2166 P.S.I.

## GENERAL INFORMATION

### Client Information:

Company: L D DRILLING INC

Contact: L D DAVIS

Phone: Fax: e-mail:

### Site Information:

Contact: KIM SHOEMAKER

Phone: Fax: e-mail:

### Well Information:

Name: BILL #1-9

Operator: L D DRILLING INC

Location-Downhole: DST #2 4498 TO 4545

Location-Surface: S9/16S/26W NESS COUNTY

### Test Information:

Company: DIAMOND TESTING

Representative: JOHN RIEDL

Supervisor: KIM SHOEMAKER

Test Type: CONVENTIONAL

Job Number: D446

Test Unit: 2

Start Date: 2008/06/17

Start Time: 16:15:00

End Date: 2008/06/17

End Time: 22:00:00

Report Date: 2008/06/17

Prepared By: JOHN RIEDL

### Remarks:

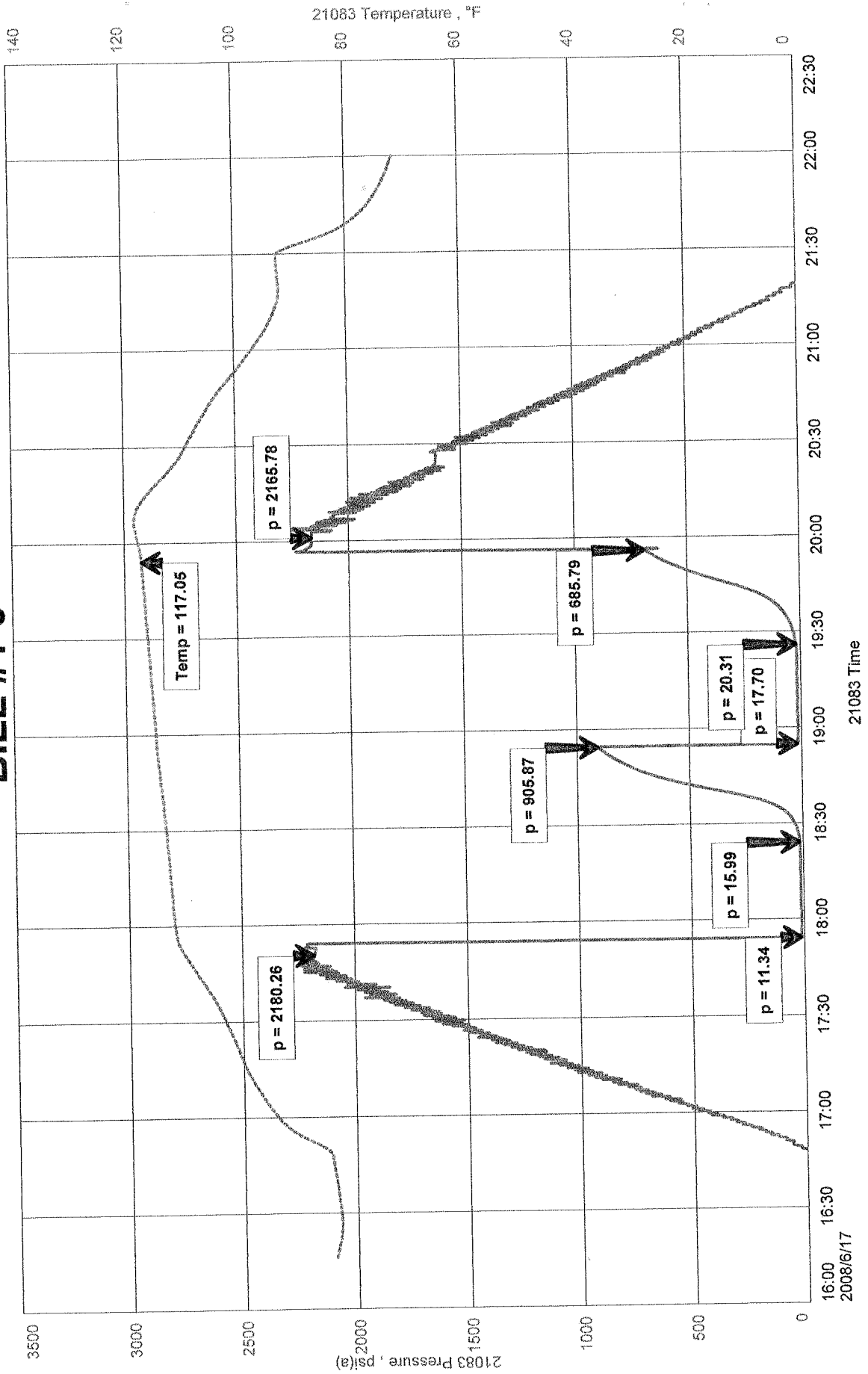
Qualified By: KIM SHOEMAKER

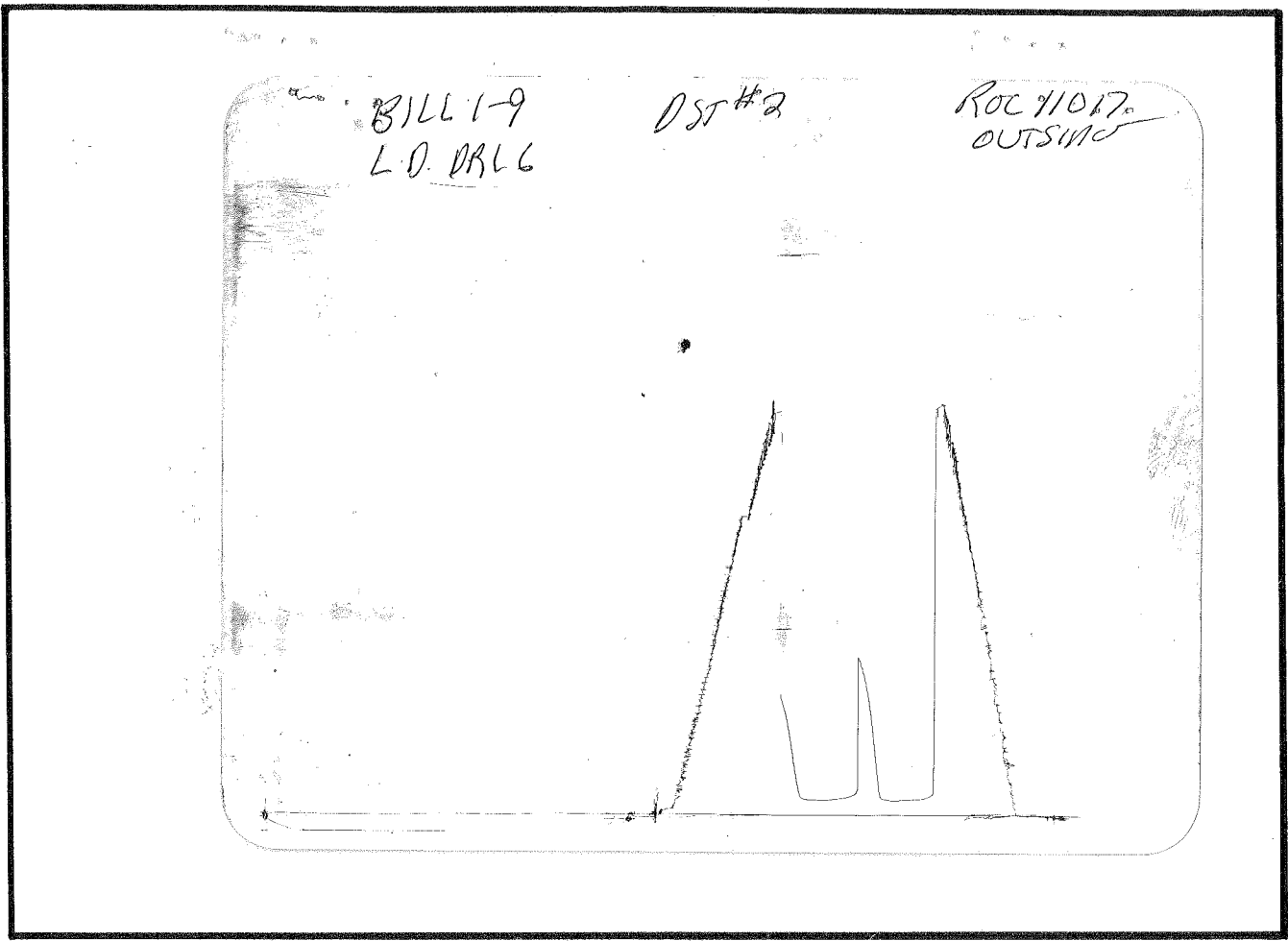
RECOVERY: 20' SLIGHTLY OIL CUT MUD

BILL #1-9  
Formation: MISSISSIPPI  
Job Number: D446

# BILL #1-9

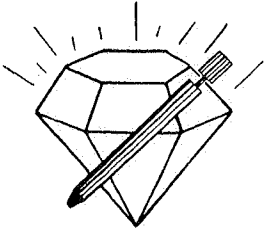
LD DRILLING INC  
DST #2 4498 TO 4545  
Start Test Date: 2008/06/17  
Final Test Date: 2008/06/17





This is an actual photograph of recorder chart.

POINT	PRESSURE		Elec. Office Reading	PSI
	Field Reading			
(A) Initial Hydrostatic Mud	2180		2180	PSI
(B) First Initial Flow Pressure	11		11	PSI
(C) First Final Flow Pressure	16		16	PSI
(D) Initial Closed-in Pressure	906		906	PSI
(E) Second Initial Flow Pressure	18		18	PSI
(F) Second Final Flow Pressure	20		20	PSI
(G) Final Closed-in Pressure	686		686	PSI
(H) Final Hydrostatic Mud	2166		2166	PSI



# DIAMOND TESTING

P.O. Box 157  
HOISINGTON, KANSAS 67544  
(620) 653-7550 • (800) 542-7313  
STC 21083.D447

Company L. D. Drilling, Inc. Lease & Well No. Bill No. 1-9

Elevation 2643 KB Formation Mississippi Effective Pay -- Ft. Ticket No. J2250

Date 6-18-08 Sec. 9 Twp. 16S Range 26W County Ness State Kansas

Test Approved By Kim B. Shoemaker Diamond Representative John C. Riedl

Formation Test No. 3 Interval Tested from 4,543 ft. to 4,561 ft. Total Depth 4,561 ft.

Packer Depth 4,538 ft. Size 6 3/4 in. Packer Depth -- ft. Size -- in.

Packer Depth 4,543 ft. Size 6 3/4 in. Packer Depth -- ft. Size -- in.

Depth of Selective Zone Set          ft.

Top Recorder Depth (Inside) 4,546 ft. Recorder Number 21083 Cap. 5,000 psi

Bottom Recorder Depth (Outside) 4,558 ft. Recorder Number 11017 Cap. 4,000 psi

Below Straddle Recorder Depth          ft. Recorder Number          Cap.          psi

Drilling Contractor Duke Drilling Co., Inc. - Rig 4 Drill Collar Length -- ft. I.D. -- in.

Mud Type Chemical Viscosity 50 Weight Pipe Length -- ft. I.D. -- in.

Weight 9.2 Water Loss 9.0 cc. Drill Pipe Length 4,517 ft. I.D. 3 1/2 in.

Chlorides 3,000 P.P.M. Test Tool Length 26 ft. Tool Size 3 1/2 - IF in.

Jars: Make Sterling Serial Number 2 Anchor Length 18 ft. Size 4 1/2 - FH in.

Did Well Flow? No Reversed Out No Surface Choke Size 1 in. Bottom Choke Size 5/8 in.

Main Hole Size 7 7/8 in. Tool Joint Size 4 1/2 - XH in.

Blow: 1st Open: Weak, 1/2 in., blow. Dead in 22 mins.

2nd Open: No blow.

Recovered 10 ft. of very slightly oil cut mud = .128800 bbls. (Grind out: 1%-oil; 99%-mud)

Recovered          ft. of         

Recovered          ft. of         

Recovered          ft. of         

Recovered          ft. of         

Remarks         

Time Set Packer(s) 7:40 ~~P.M.~~ <sup>A.M.</sup> Time Started Off Bottom 9:40 ~~P.M.~~ <sup>A.M.</sup> Maximum Temperature 118°

Initial Hydrostatic Pressure ..... (A) 2209 P.S.I.

Initial Flow Period ..... Minutes 30 (B) 12 P.S.I. to (C) 12 P.S.I.

Initial Closed In Period ..... Minutes 30 (D) 897 P.S.I.

Final Flow Period ..... Minutes 30 (E) 13 P.S.I. to (F) 14 P.S.I.

Final Closed In Period ..... Minutes 30 (G) 805 P.S.I.

Final Hydrostatic Pressure ..... (H) 2188 P.S.I.

## GENERAL INFORMATION

### Client Information:

Company: L D DRILLING INC

Contact: L D DAVIS

Phone: Fax: e-mail:

### Site Information:

Contact: KIM SHOEMAKER

Phone: Fax: e-mail:

### Well Information:

Name: BILL #1-9

Operator: L D DRILLING INC

Location-Downhole: DST #3 4543 TO 4561

Location-Surface: S9/16S/26W NESS COUNTY

### Test Information:

Company: DIAMOND TESTING

Representative: JOHN RIEDL

Supervisor: KIM SHOEMAKER

Test Type: CONVENTIONAL Job Number: D447

Test Unit: 2

Start Date: 2008/06/18 Start Time: 05:30:00

End Date: 2008/06/18 End Time: 11:40:00

Report Date: 2008/06/18 Prepared By: JOHN RIEDL

Qualified By: KIM SHOEMAKER

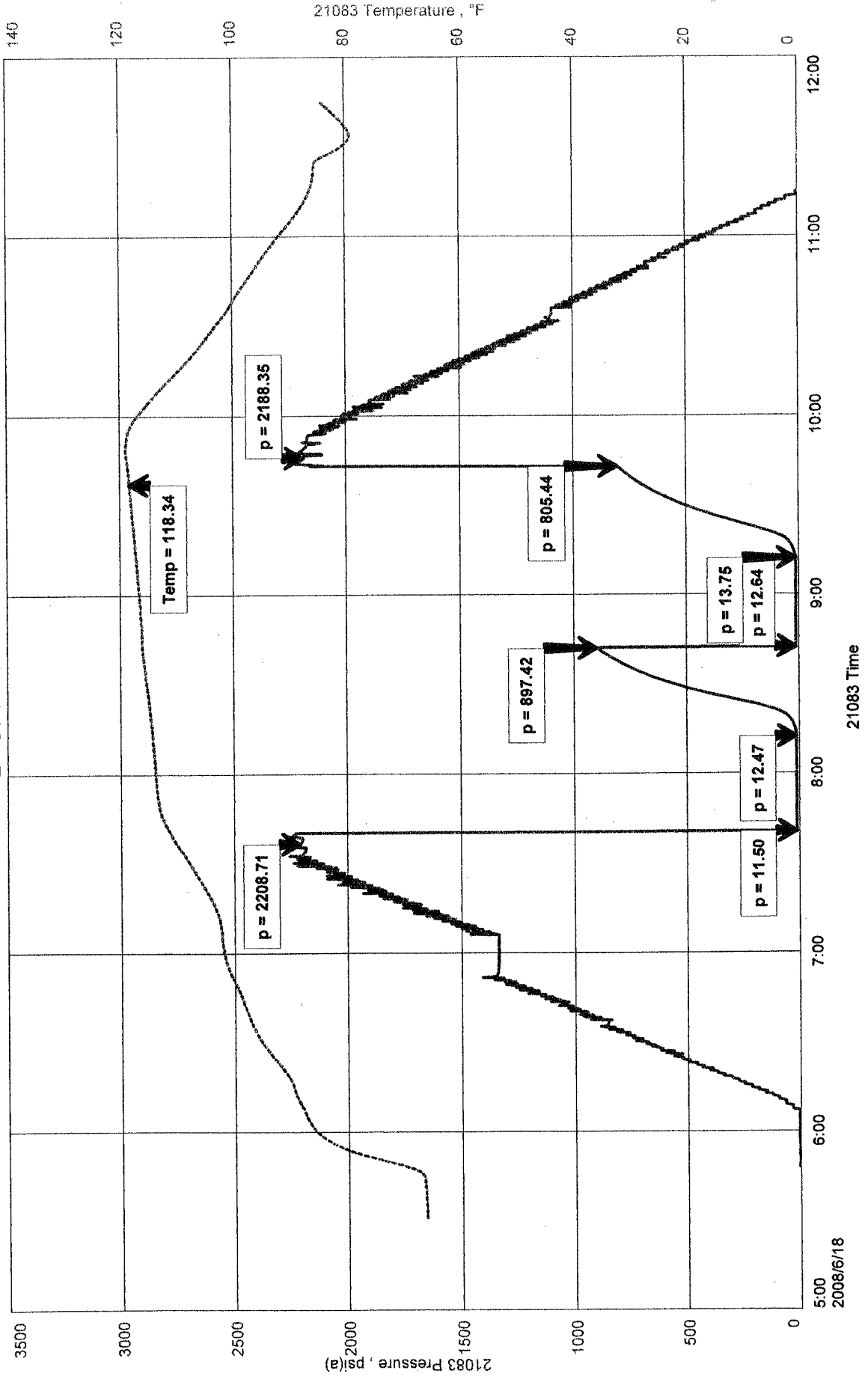
### Remarks:

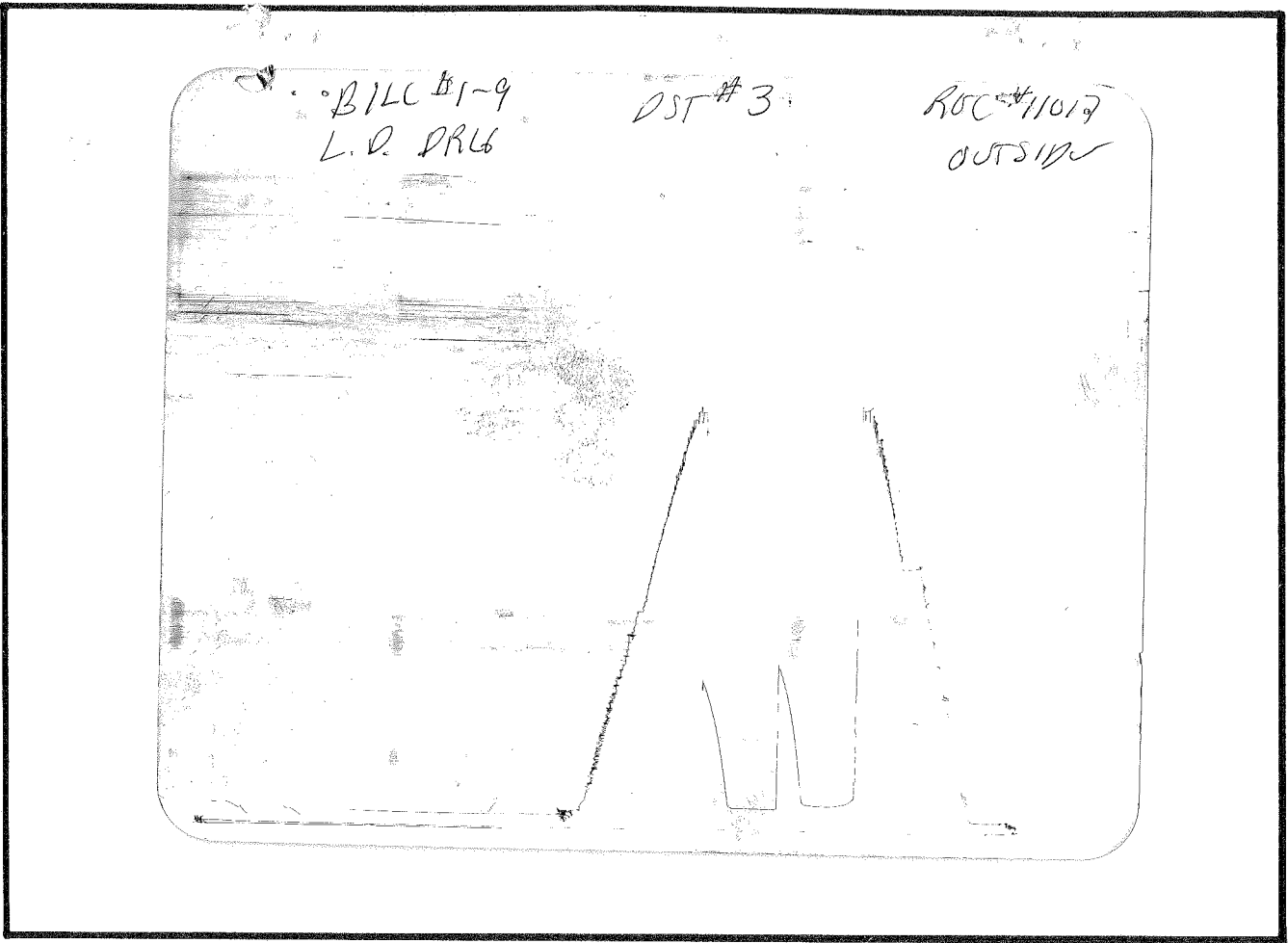
RECOVERY: 10' VSLOCM ( 1%OIL 99%MUD)

L D DRILLING INC  
DST #3 4543 TO 4561  
Start Test Date: 2008/06/18  
Final Test Date: 2008/06/18

BILL #1-9  
Formation: MISSISSIPPI  
Job Number: D447

# BILL #1-9





This is an actual photograph of recorder chart.

POINT	PRESSURE		Elec. Office Reading	PSI
	Field Reading			
(A) Initial Hydrostatic Mud .....	2209	2209		PSI
(B) First Initial Flow Pressure.....	12	12		PSI
(C) First Final Flow Pressure .....	12	12		PSI
(D) Initial Closed-in Pressure .....	897	897		PSI
(E) Second Initial Flow Pressure .....	13	13		PSI
(F) Second Final Flow Pressure.....	14	14		PSI
(G) Final Closed-in Pressure.....	805	805		PSI
(H) Final Hydrostatic Mud .....	2188	2188		PSI