

**DIAMOND TESTING**  
P.O. Box 157  
**HOISINGTON, KANSAS 67544**  
(620) 653-7550 • (800) 542-7313

Company Trans Pacific Oil Corporation Lease & Well No. Evel "A" Unit No. 1-14  
Elevation 2668 KB Formation Kansas City (70' Zone) Effective Pay -- Ft. Ticket No. C22  
Date 2-25-08 Sec. 14 Twp. 16S Range 27W County Lane State Kansas  
Test Approved By W. Bryce Bidleman Diamond Representative Chris Redetzke

Formation Test No. 1 Interval Tested from 4,017 ft. to 4,039 ft. Total Depth 4,039 ft.  
Packer Depth 4,012 ft. Size 6 3/4 in. Packer Depth -- ft. Size -- in.  
Packer Depth 4,017 ft. Size 6 3/4 in. Packer Depth -- ft. Size -- in.  
Depth of Selective Zone Set          ft.

Top Recorder Depth (Inside) 4,020 ft. Recorder Number 30035 Cap. 5,000 psi  
Bottom Recorder Depth (Outside) 4,036 ft. Recorder Number 13387 Cap. 4,000 psi  
Below Straddle Recorder Depth          ft. Recorder Number          Cap.          psi

Drilling Contractor Duke Drilling Company, Inc. - Rig 4 Drill Collar Length -- ft. I.D. -- in.  
Mud Type Chemical Viscosity 51 Weight Pipe Length -- ft. I.D. -- in.  
Weight 9.1 Water Loss 8.0 cc. Drill Pipe Length 3,997 ft. I.D. 3 1/2 in.  
Chlorides 1,200 P.P.M. Test Tool Length 20 ft. Tool Size 3 1/2 - IF in.  
Jars: Make Sterling Serial Number Not Run Anchor Length 22 ft. Size 4 1/2 - FH in.  
Did Well Flow? No Reversed Out No Surface Choke Size 1 in. Bottom Choke Size 5/8 in.  
Main Hole Size 7 7/8 in. Tool Joint Size 4 1/2 - XH in.

Blow: 1st Open: Fair,  $\frac{1}{4}$  in., blow increasing. Off bottom of bucket in 15 mins. No blow back during shut-in.  
2nd Open: Fair,  $\frac{1}{4}$  in., blow increasing. Off bottom of bucket in 20 mins. No blow back during shut-in.

Recovered 519 ft. of mud cut water with a scum of oil = 7.369800 bbls. (Grind out: 20%-mud; 80%-water)  
Recovered          ft. of          Chlorides: 40,000 Ppm  
Recovered          ft. of           
Recovered          ft. of           
Recovered          ft. of         

Remarks Tool Sample Grind Out: 20%-mud; 80%-water with a scum of oil  
Diesel in bucket.

Time Set Packer(s) 4:20 <sup>AXM.</sup> P.M. Time Started Off Bottom 8:20 <sup>AXM.</sup> P.M. Maximum Temperature 126°  
Initial Hydrostatic Pressure          (A) 1980 P.S.I.  
Initial Flow Period          Minutes 30 (B) 29 P.S.I. to (C) 117 P.S.I.  
Initial Closed In Period          Minutes 60 (D) 1087 P.S.I.  
Final Flow Period          Minutes 60 (E) 120 P.S.I. to (F) 265 P.S.I.  
Final Closed In Period          Minutes 90 (G) 1049 P.S.I.  
Final Hydrostatic Pressure          (H) 1982 P.S.I.

## GENERAL INFORMATION

### Client Information:

Company: TRANS PACIFIC OIL CORP.  
Contact: GARY SHARP  
Phone: Fax: e-mail:

### Site Information:

Contact: BRYCE BIDLEMAN  
Phone: Fax: e-mail:

### Well Information:

Name: EVEL 'A' UNIT #1-14  
Operator: TRANS PACIFIC OIL CORP.  
Location-Downhole: DST #1 K.C. 70' ZONE 4,017 - 4,039  
Location-Surface: sec 14-16S-27W LANE COUNTY

### Test Information:

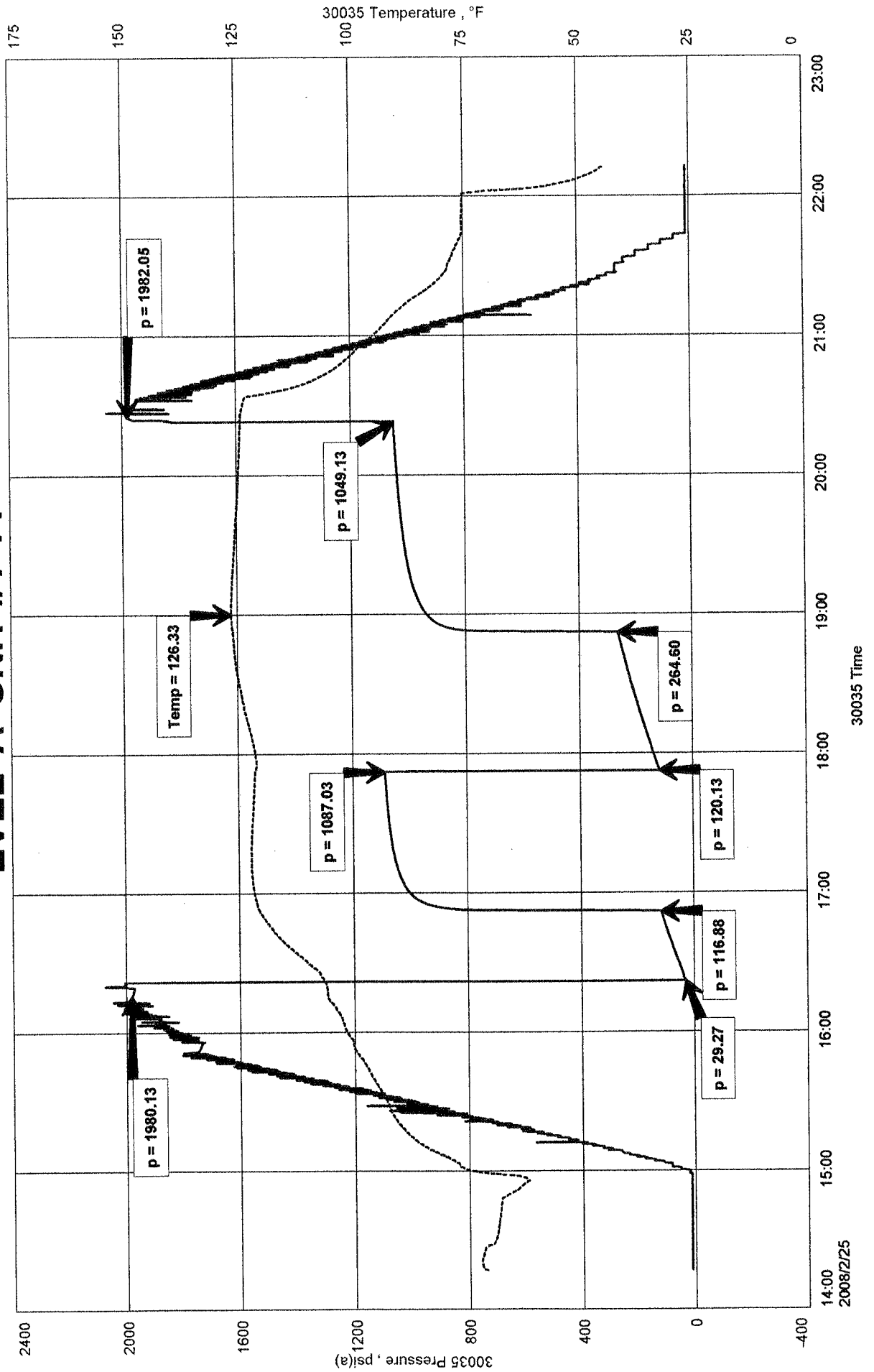
Company: DIAMOND TESTING  
Representative: CHRIS  
Supervisor: BRYCE BIDLEMAN  
Test Type: CONVENTIONAL Job Number:  
Test Unit: NO. 1  
Start Date: 2008/02/25 Start Time: 14:16:00  
End Date: 2008/02/25 End Time: 22:12:00  
Report Date: Prepared By:  
Remarks: Qualified By:

RECOVERED: 519' WTR. 20% MUD, 80% WTR WITH SCUM OF OIL CHLORIDES: 40,000 ppm  
TOOL SAMPLE: WTR. WITH SCUM OF OIL

EVEL 'A' UNIT #1-14  
 Formation: DST #1 K.C. 70' ZONE 4,017 - 4,039  
 Pool: WILKDCAT

TRANS PACIFIC OIL CORP.  
 DST #1 K.C. 70' ZONE 4,017 - 4,039  
 Start Test Date: 2008/02/25  
 Final Test Date: 2008/02/25

# EVEL 'A' UNIT #1-14

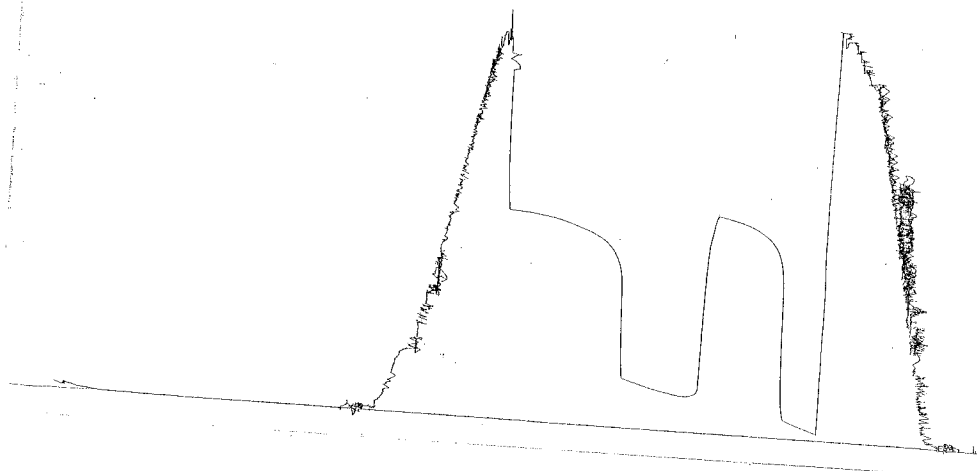


DST #1 Outside 13387

4017-4039

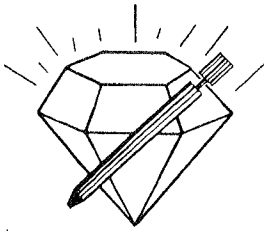
KC. 70' zone

Loc. 4036



This is an actual photograph of recorder chart.

POINT	PRESSURE Elec.		
	Field Reading	Office Reading	
(A) Initial Hydrostatic Mud .....	1980	1980	PSI
(B) First Initial Flow Pressure.....	29	29	PSI
(C) First Final Flow Pressure .....	117	117	PSI
(D) Initial Closed-in Pressure .....	1087	1087	PSI
(E) Second Initial Flow Pressure.....	120	120	PSI
(F) Second Final Flow Pressure.....	265	265	PSI
(G) Final Closed-in Pressure.....	1049	1049	PSI
(H) Final Hydrostatic Mud.....	1982	1982	PSI



**DIAMOND TESTING**  
P.O. Box 157  
**HOISINGTON, KANSAS 67544**  
(620) 653-7550 • (800) 542-7313

Company Trans Pacific Oil Corporation Lease & Well No. Evel "A" Unit No. 1-14  
Elevation 2668 KB Formation Kansas City (120', 140' & 160' Zones) Effective Pay -- Ft. Ticket No. C23  
Date 2-26-08 Sec. 14 Twp. 16S Range 27W County Lane State Kansas

Test Approved By W. Bryce Bidleman Diamond Representative Chris Redetzke

Formation Test No. 2 Interval Tested from 4,094 ft. to 4,155 ft. Total Depth 4,155 ft.

Packer Depth 4,089 ft. Size 6 3/4 in. Packer Depth -- ft. Size -- in.

Packer Depth 4,094 ft. Size 6 3/4 in. Packer Depth -- ft. Size -- in.

Depth of Selective Zone Set          ft.

Top Recorder Depth (Inside) 4,097 ft. Recorder Number 30035 Cap. 5,000 psi

Bottom Recorder Depth (Outside) 4,152 ft. Recorder Number 13387 Cap. 4,000 psi

Below Straddle Recorder Depth          ft. Recorder Number          Cap.          psi

Drilling Contractor Duke Drilling Company, Inc. - Rig 4 Drill Collar Length -- ft. I.D. -- in.

Mud Type Chemical Viscosity 48 Weight Pipe Length -- ft. I.D. -- in.

Weight 9.1 Water Loss 8.0 cc. Drill Pipe Length 4,074 ft. I.D. 3 1/2 in.

Chlorides 1,400 P.P.M. Test Tool Length 20 ft. Tool Size 3 1/2 - IF in.

Jars: Make Sterling Serial Number Not Run Anchor Length 61 ft. Size 4 1/2 - FH in.

Did Well Flow? No Reversed Out No Surface Choke Size 1 in. Bottom Choke Size 5/8 in.

Main Hole Size 7 7/8 in. Tool Joint Size 4 1/2 - XH in.

Blow: 1st Open: Fair, 1/2 in., blow increasing to 5 ins. No blow back during shut-in.

2nd Open: Weak, surface blow increasing to 6 ins. No blow back during shut-in.

Recovered 1 ft. of clean oil = .014200 bbls. (Gravity: 46 @ 60°)

Recovered 94 ft. of oil specked watery mud = 1.334800 bbls. (Grind out: 3%-oil; 47%-water; 50%-mud)

Recovered 95 ft. of TOTAL FLUID = 1.349000 bbls.

Recovered          ft. of         

Recovered          ft. of         

Remarks Tool Sample Grind Out: 2%-oil; 4%-water; 94%-mud

Diesel in bucket.

Time Set Packer(s) 4:40 <sup>XXM.</sup> P.M. Time Started Off Bottom 8:55 <sup>XXM.</sup> P.M. Maximum Temperature 117°

Initial Hydrostatic Pressure ..... (A) 2038 P.S.I.

Initial Flow Period ..... Minutes 30 (B) 27 P.S.I. to (C) 46 P.S.I.

Initial Closed In Period ..... Minutes 75 (D) 1023 P.S.I.

Final Flow Period ..... Minutes 60 (E) 47 P.S.I. to (F) 71 P.S.I.

Final Closed In Period ..... Minutes 90 (G) 996 P.S.I.

Final Hydrostatic Pressure ..... (H) 2035 P.S.I.

## GENERAL INFORMATION

### Client Information:

Company: TRANS PACIFIC OIL CORP.  
Contact: GARY SHARP  
Phone: Fax: e-mail:

### Site Information:

Contact: BRYCE BIDLEMAN  
Phone: Fax: e-mail:

### Well Information:

Name: EVEL 'A' UNIT #1-14  
Operator: TRANS PACIFIC OIL CORP.  
Location-Downhole: DST #2 K.C. 120' 140' 160' ZONES 4,094 - 4,155  
Location-Surface: sec 14-16S-27W LANE COUNTY

### Test Information:

Company: DIAMOND TESTING  
Representative: CHRIS  
Supervisor: BRYCE BIDLEMAN  
Test Type: CONVENTIONAL Job Number:  
Test Unit: NO. 1  
Start Date: 2008/02/26 Start Time: 15:11:00  
End Date: 2008/02/26 End Time: 22:42:00  
Report Date: Prepared By:  
Remarks: Qualified By:

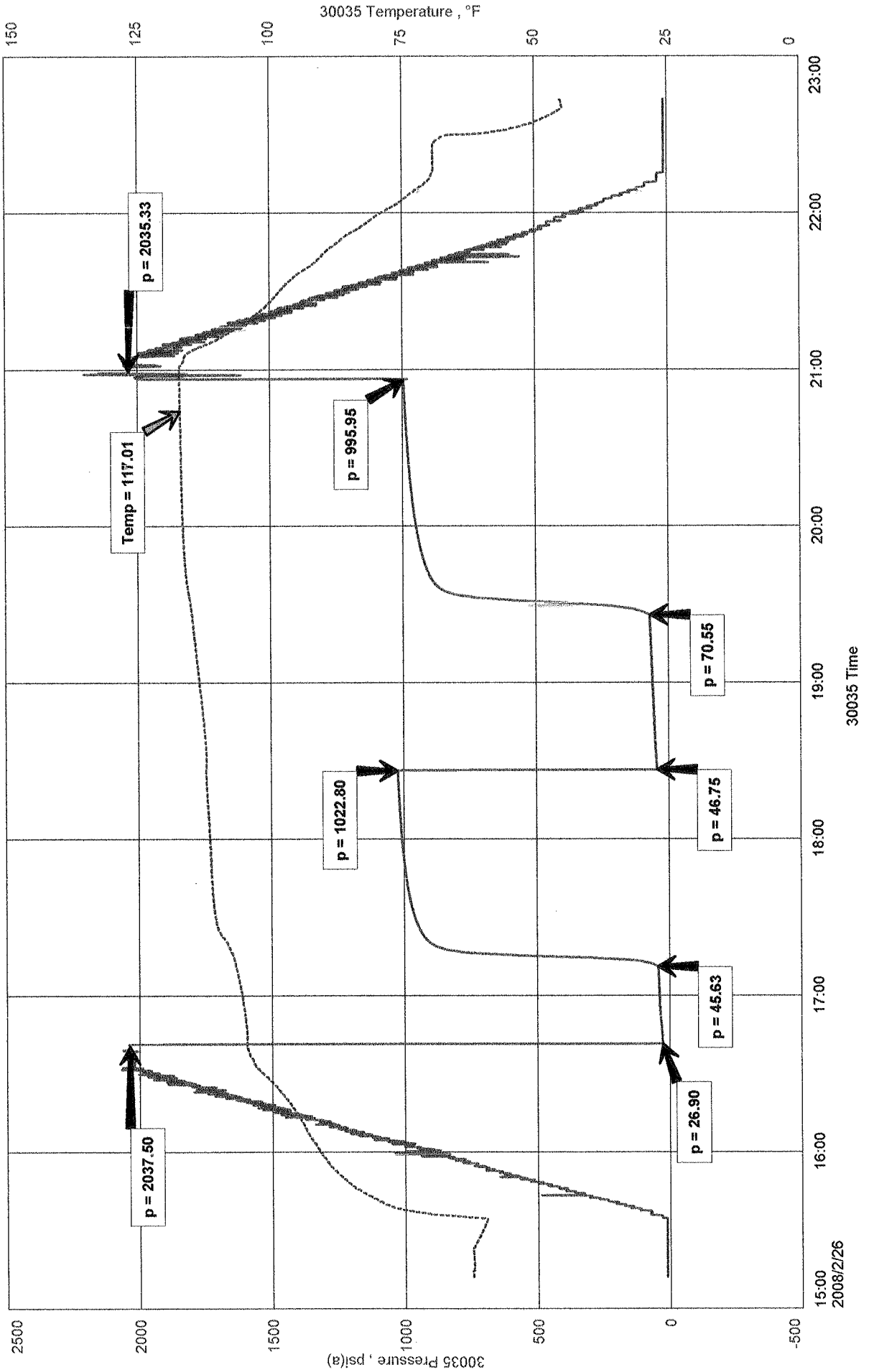
RECOVERED: 1' CLEAN OIL GRAVITY: 46 @ 60 deg. F.  
94' O.S.W.M. 50% MUD, 47% WTR, 3% OIL  
95' TOTAL FLUID

TOOL SAMPLE: 94% MUD, 4%WTR, 2% OIL

TRANS PACIFIC OIL CORP.  
 DST #2 K.C. 120' 140' 160' ZONES 4,094 - 4,155  
 Start Test Date: 2008/02/26  
 Final Test Date: 2008/02/26

EVEL 'A' UNIT #1-14  
 Formation: DST #2 K.C. 120' 140' 160' ZONES 4,094 - 4,155  
 Pool: WILDCAT

# EVEL 'A' UNIT #1-14

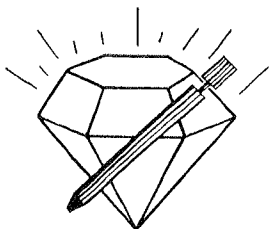


DST #2      Outside      13387      9094-4155  
 K.C. 120, 140, 160 zones      Loc. 4152



This is an actual photograph of recorder chart.

POINT	PRESSURE Elec.		PSI
	Field Reading	Office Reading	
(A) Initial Hydrostatic Mud .....	2038	2038	PSI
(B) First Initial Flow Pressure.....	27	27	PSI
(C) First Final Flow Pressure .....	46	46	PSI
(D) Initial Closed-in Pressure .....	1023	1023	PSI
(E) Second Initial Flow Pressure.....	47	47	PSI
(F) Second Final Flow Pressure.....	71	71	PSI
(G) Final Closed-in Pressure.....	996	996	PSI
(H) Final Hydrostatic Mud.....	2035	2035	PSI



# DIAMOND TESTING

P.O. Box 157

HOISINGTON, KANSAS 67544

(620) 653-7550 • (800) 542-7313

Company Trans Pacific Oil Corporation Lease & Well No. Evel "A" Unit No. 1-14  
 Elevation 2668 KB Formation Kansas City (180' Zone) Effective Pay -- Ft. Ticket No. C24  
 Date 2-27-08 Sec. 14 Twp. 16S Range 27W County Lane State Kansas

Test Approved By W. Bryce Bidleman Diamond Representative Chris Redetzke

Formation Test No. 3 Interval Tested from 4,155 ft. to 4,185 ft. Total Depth 4,185 ft.

Packer Depth 4,150 ft. Size 6 3/4 in. Packer Depth -- ft. Size -- in.

Packer Depth 4,155 ft. Size 6 3/4 in. Packer Depth -- ft. Size -- in.

Depth of Selective Zone Set          ft.

Top Recorder Depth (Inside) 4,158 ft. Recorder Number 30035 Cap. 5,000 psi

Bottom Recorder Depth (Outside) 4,182 ft. Recorder Number 13387 Cap. 4,000 psi

Below Straddle Recorder Depth          ft. Recorder Number          Cap.          psi

Drilling Contractor Duke Drilling Company, Inc. - Rig 4 Drill Collar Length -- ft. I.D. -- in.

Mud Type Chemical Viscosity 48 Weight Pipe Length -- ft. I.D. -- in.

Weight 9.1 Water Loss 8.0 cc. Drill Pipe Length 4,135 ft. I.D. 3 1/2 in.

Chlorides 1,400 P.P.M. Test Tool Length 20 ft. Tool Size 3 1/2 - IF in.

Jars: Make Sterling Serial Number Not Run Anchor Length 30 ft. Size 4 1/2 - FH in.

Did Well Flow? No Reversed Out No Surface Choke Size 1 in. Bottom Choke Size 5/8 in.

Main Hole Size 7 7/8 in. Tool Joint Size 4 1/2 - XH in.

Blow: 1st Open: Strong, 1/2 in., blow increasing. Off bottom of bucket in 3 1/2 mins. 10 in. blow back during shut-in.

2nd Open: Strong, 1/2 in., blow increasing. Off bottom of bucket in 3 mins. 3 in. blow back during shut-in.

Recovered 838 ft. of gas in pipe

Recovered 137 ft. of heavy oil cut gassy watery mud = 1.945400 bbls. (Grind out: 30%-oil; 10%-gas; 10%-water; 50%-mud)

Recovered 122 ft. of muddy water with a scum of oil = 1.732400 bbls. (Grind out: 15%-mud; 85%-water)

Recovered 366 ft. of muddy water with a scum of oil = 5.197200 bbls. (Grind out: 3%-mud; 97%-water)

Recovered 625 ft. of TOTAL FLUID = 8.875000 bbls. Chlorides: 40,000 Ppm

Remarks Tool Sample Grind Out: 1%-oil; 99%-water

Time Set Packer(s) 9:15 ~~P.M.~~ <sup>A.M.</sup> Time Started Off Bottom 1:30 ~~P.M.~~ <sup>A.M.</sup> Maximum Temperature 128°

Initial Hydrostatic Pressure ..... (A) 2071 P.S.I.

Initial Flow Period ..... Minutes 30 (B) 51 P.S.I. to (C) 160 P.S.I.

Initial Closed In Period ..... Minutes 75 (D) 1134 P.S.I.

Final Flow Period ..... Minutes 60 (E) 169 P.S.I. to (F) 319 P.S.I.

Final Closed In Period ..... Minutes 90 (G) 1042 P.S.I.

Final Hydrostatic Pressure ..... (H) 2033 P.S.I.

## GENERAL INFORMATION

### Client Information:

Company: TRANS PACIFIC OIL CORP.  
Contact: GARY SHARP  
Phone: Fax: e-mail:

### Site Information:

Contact: BRYCE BIDLEMAN  
Phone: Fax: e-mail:

### Well Information:

Name: EVEL 'A' UNIT #1-14  
Operator: TRANS PACIFIC OIL CORP.  
Location-Downhole: DST #3 KC. 180' ZONE 4,155 - 4,185  
Location-Surface: sec 14-16S-27W LANE COUNTY

### Test Information:

Company: DIAMOND TESTING  
Representative: CHRIS  
Supervisor: BRYCE BIDLEMAN  
Test Type: CONVENTIONAL Job Number:  
Test Unit: NO. 1  
Start Date: 2008/02/27 Start Time: 07:08:00  
End Date: 2008/02/27 End Time: 15:54:00  
Report Date: Prepared By:  
Remarks: Qualified By:

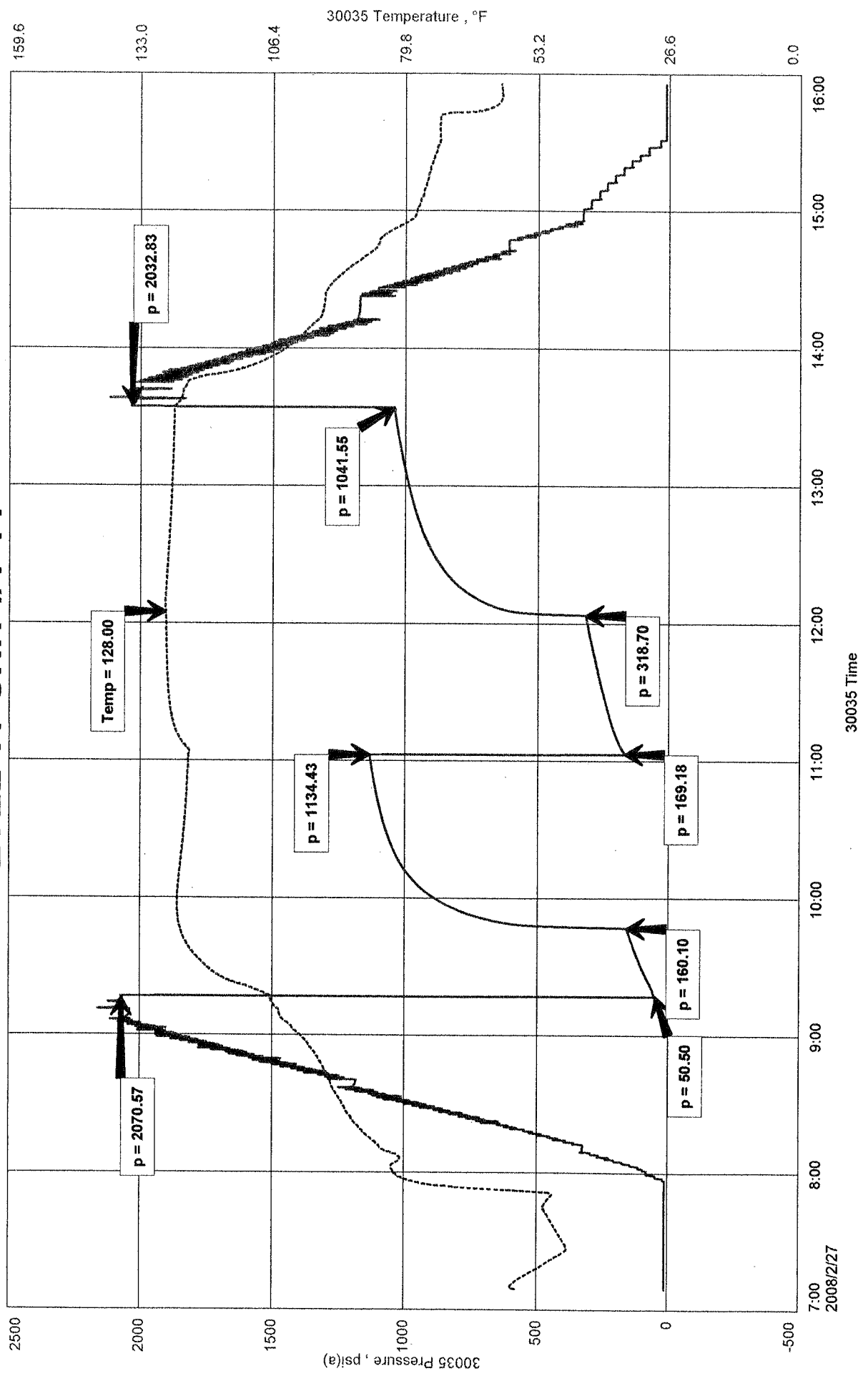
RECOVERED: 838' G.I.P.  
137' H.O.C.G.W.M. 50% MUD, 30% OIL, 10% WTR, 10% GAS  
122' M.W. 85% WTR, 15% MUD WITH SCUM OF OIL  
366' M.W. 97% WTR, 3% MUD WITH SCUM OF OIL CHLORIDES: 40,000 ppm  
625' TOTAL FLUID

TOOL SAMPLE: 99% WTR, 1% OIL

TRANS PACIFIC OIL CORP.  
 DST #3 KC. 180' ZONE 4, 155 - 4, 185  
 Start Test Date: 2008/02/27  
 Final Test Date: 2008/02/27

EVEL 'A' UNIT #1-14  
 Formation: DST #3 KC. 180' ZONE 4, 155 - 4, 185  
 Pool: WILDCAT

# EVEL 'A' UNIT #1-14

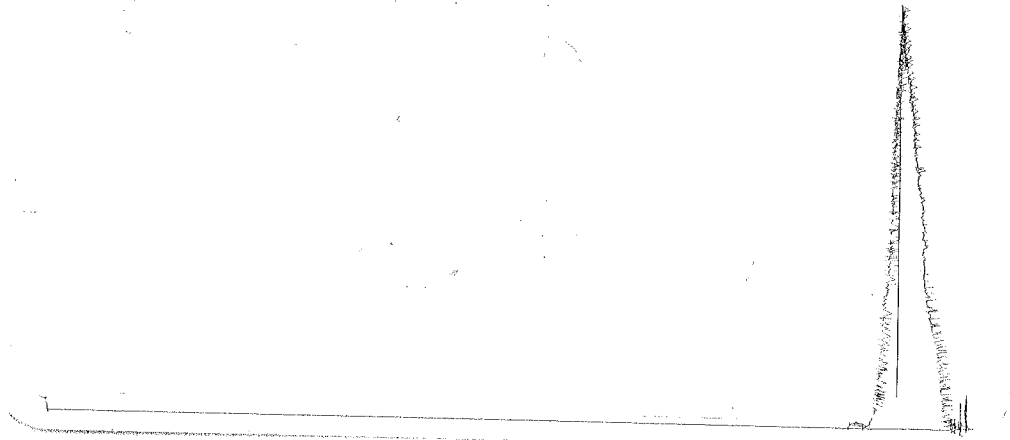


DST # 3 Outside 13387

4155-4185

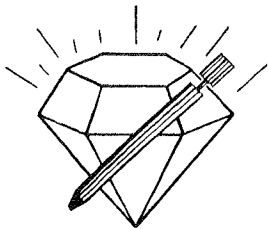
KC. 18020m

Loc. 4182



This is an actual photograph of recorder chart.

POINT	PRESSURE Elec.		
	Field Reading	Office Reading	
(A) Initial Hydrostatic Mud .....	2071	2071	PSI
(B) First Initial Flow Pressure .....	51	51	PSI
(C) First Final Flow Pressure .....	160	160	PSI
(D) Initial Closed-in Pressure .....	1134	1134	PSI
(E) Second Initial Flow Pressure .....	169	169	PSI
(F) Second Final Flow Pressure .....	319	319	PSI
(G) Final Closed-in Pressure .....	1042	1042	PSI
(H) Final Hydrostatic Mud .....	2033	2033	PSI



**DIAMOND TESTING**  
P.O. Box 157  
**HOISINGTON, KANSAS 67544**  
(620) 653-7550 • (800) 542-7313

Company Trans Pacific Oil Corporation Lease & Well No. Evel "A" Unit No. 1-14  
Elevation 2668 KB Formation Kansas City (200' Zone) Effective Pay -- Ft. Ticket No. C25  
Date 2-28-08 Sec. 14 Twp. 16S Range 27W County Lane State Kansas

Test Approved By W. Bryce Bidleman Diamond Representative Chris Redetzke

Formation Test No. 4 Interval Tested from 4,185 ft. to 4,215 ft. Total Depth 4,215 ft.

Packer Depth 4,180 ft. Size 6 3/4 in. Packer Depth -- ft. Size -- in.

Packer Depth 4,185 ft. Size 6 3/4 in. Packer Depth -- ft. Size -- in.

Depth of Selective Zone Set          ft.

Top Recorder Depth (Inside) 4,188 ft. Recorder Number 30035 Cap. 5,000 psi

Bottom Recorder Depth (Outside) 4,212 ft. Recorder Number 13387 Cap. 4,000 psi

Below Straddle Recorder Depth          ft. Recorder Number          Cap.          psi

Drilling Contractor Duke Drilling Company, Inc. - Rig 4 Drill Collar Length -- ft. I.D. -- in.

Mud Type Chemical Viscosity 48 Weight Pipe Length -- ft. I.D. -- in.

Weight 9.1 Water Loss 8.0 cc. Drill Pipe Length 4,165 ft. I.D. 3 1/2 in.

Chlorides 1,500 P.P.M. Test Tool Length 20 ft. Tool Size 3 1/2 - IF in.

Jars: Make Sterling Serial Number Not Run Anchor Length 30 ft. Size 4 1/2 - FH in.

Did Well Flow? No Reversed Out No Surface Choke Size 1 in. Bottom Choke Size 5/8 in.

Main Hole Size 7 7/8 in. Tool Joint Size 4 1/2 - XH in.

Blow: 1st Open: Weak, surface blow. No blow back during shut-in.

2nd Open: No blow. No blow back during shut-in.

Recovered 20 ft. of slightly oil specked mud with a scum of oil = .284000 bbls. (Grind out: 100%-mud)

Recovered          ft. of         

Recovered          ft. of         

Recovered          ft. of         

Recovered          ft. of         

Remarks Tool Sample Grind Out: 1%-oil; 99%-mud

Time Set Packer(s) 2:27 <sup>A.M.</sup> ~~P.M.~~ Time Started Off Bottom 4:57 <sup>A.M.</sup> ~~P.M.~~ Maximum Temperature 117°

Initial Hydrostatic Pressure ..... (A) 2075 P.S.I.

Initial Flow Period ..... Minutes 30 (B) 26 P.S.I. to (C) 28 P.S.I.

Initial Closed In Period ..... Minutes 60 (D) 1056 P.S.I.

Final Flow Period ..... Minutes 30 (E) 35 P.S.I. to (F) 34 P.S.I.

Final Closed In Period ..... Minutes 30 (G) 987 P.S.I.

Final Hydrostatic Pressure ..... (H) 2077 P.S.I.

## GENERAL INFORMATION

### Client Information:

Company: TRANS PACIFIC OIL CORP.

Contact: GARY SHARP

Phone: Fax: e-mail:

### Site Information:

Contact: BRYCE BIDLEMAN

Phone: Fax: e-mail:

### Well Information:

Name: EVEL 'A' UNIT #1-14

Operator: TRANS PACIFIC OIL CORP.

Location-Downhole: DST #4 KC. 200' ZONE 4,185 - 4,215

Location-Surface: sec 14-16S-27W LANE COUNTY

### Test Information:

Company: DIAMOND TESTING

Representative: CHRIS

Supervisor: BRYCE BIDLEMAN

Test Type: CONVENTIONAL Job Number:

Test Unit: NO. 1

Start Date: 2008/02/28 Start Time: 00:16:00

End Date: 2008/02/28 End Time: 06:57:00

Report Date: Prepared By:

Remarks: Qualified By:

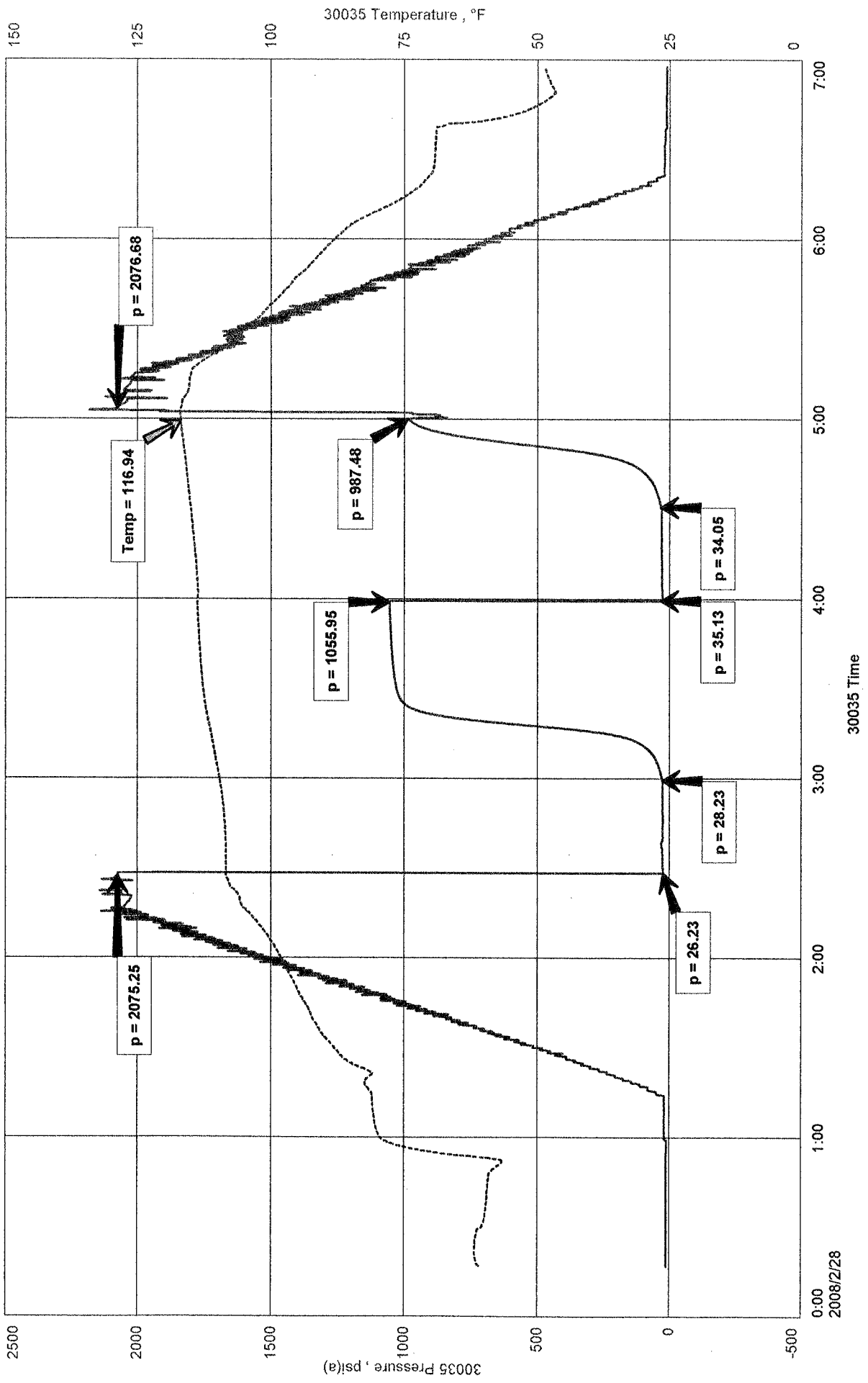
RECOVERED: 20' S.O.S.M. 100% MUD WITH SCUM OF OIL

TOOL SAMPLE: 99% MUD, 1% OIL

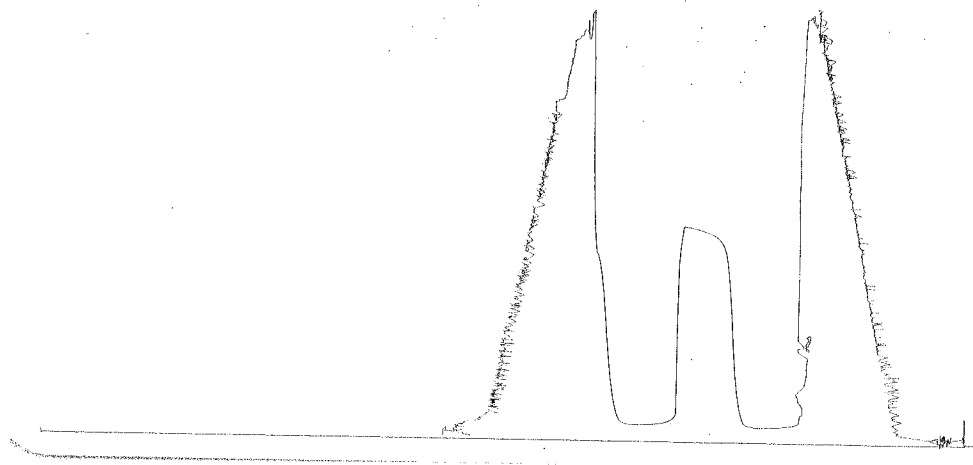
TRANS PACIFIC OIL CORP.  
 DST #4 KC. 200' ZONE 4,185 - 4,215  
 Start Test Date: 2008/02/28  
 Final Test Date: 2008/02/28

EVEL 'A' UNIT #1-14  
 Formation: DST #4 KC. 200' ZONE 4,185 - 4,215  
 Pool: WILDCAT

# EVEL 'A' UNIT #1-14

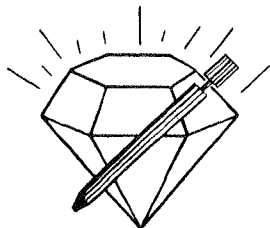


DST #4      Outside 18387      4185-4215  
 KC. 200' zone      Loc. 4212



This is an actual photograph of recorder chart.

POINT	PRESSURE		PSI
	Field Reading	Elec. Office Reading	
(A) Initial Hydrostatic Mud .....	2075	2075	PSI
(B) First Initial Flow Pressure.....	26	26	PSI
(C) First Final Flow Pressure .....	28	28	PSI
(D) Initial Closed-in Pressure .....	1056	1056	PSI
(E) Second Initial Flow Pressure.....	35	35	PSI
(F) Second Final Flow Pressure.....	34	34	PSI
(G) Final Closed-in Pressure.....	987	987	PSI
(H) Final Hydrostatic Mud.....	2077	2077	PSI



**DIAMOND TESTING**  
P.O. Box 157  
**HOISINGTON, KANSAS 67544**  
(620) 653-7550 • (800) 542-7313

Company Trans Pacific Oil Corporation Lease & Well No. Evel "A" Unit No. 1-14  
Elevation 2668 KB Formation Kansas City (220' Zone) Effective Pay -- Ft. Ticket No. C26  
Date 2-28-08 Sec. 14 Twp. 16S Range 27W County      Lane      State Kansas  
Test Approved By W. Bryce Bidleman Diamond Representative Chris Redetzke

Formation Test No. 5 Interval Tested from 4,215 ft. to 4,250 ft. Total Depth 4,250 ft.  
Packer Depth 4,210 ft. Size 6 3/4 in. Packer Depth -- ft. Size -- in.  
Packer Depth 4,215 ft. Size 6 3/4 in. Packer Depth -- ft. Size -- in.  
Depth of Selective Zone Set      ft.

Top Recorder Depth (Inside) 4,218 ft. Recorder Number 30035 Cap. 5,000 psi  
Bottom Recorder Depth (Outside) 4,247 ft. Recorder Number 13387 Cap. 4,000 psi  
Below Straddle Recorder Depth      ft. Recorder Number      Cap.      psi

Drilling Contractor Duke Drilling Company, Inc. - Rig 4 Drill Collar Length -- ft. I.D. -- in.  
Mud Type Chemical Viscosity 59 Weight Pipe Length -- ft. I.D. -- in.  
Weight 9.1 Water Loss 8.8 cc. Drill Pipe Length 4,195 ft. I.D. 3 1/2 in.  
Chlorides 1,500 P.P.M. Test Tool Length 20 ft. Tool Size 3 1/2 - IF in.  
Jars: Make Sterling Serial Number Not Run Anchor Length 35 ft. Size 4 1/2 - FH in.  
Did Well Flow? No Reversed Out No Surface Choke Size 1 in. Bottom Choke Size 5/8 in.  
Main Hole Size 7 7/8 in. Tool Joint Size 4 1/2 - XH in.

Blow: 1st Open: Fair, 1/4 in., blow increasing to 7 ins. No blow back during shut-in.  
2nd Open: Fair, 1/4 in., blow increasing. Off bottom of bucket in 40 mins. No blow back during shut-in.

Recovered 282 ft. of gas in pipe  
Recovered 30 ft. of heavy oil cut watery mud = .426000 bbls. (Grind out: 45%-oil; 5%-water; 50%-mud)  
Recovered 60 ft. of muddy water = .852000 bbls. (Grind out: 45%-mud; 55%-water) Chlorides: 35,000 Ppm  
Recovered 90 ft. of TOTAL FLUID = 1.278000 bbls.

Recovered      ft. of  
Remarks Tool Sample Grind Out: 20%-mud with a scum of oil; 80%-water

Time Set Packer(s) 5:50 <sup>AM.</sup> P.M. Time Started Off Bottom 10:05 <sup>AM.</sup> P.M. Maximum Temperature 120 °  
Initial Hydrostatic Pressure ..... (A) 2114 P.S.I.  
Initial Flow Period ..... Minutes 30 (B) 28 P.S.I. to (C) 43 P.S.I.  
Initial Closed In Period ..... Minutes 75 (D) 634 P.S.I.  
Final Flow Period ..... Minutes 60 (E) 49 P.S.I. to (F) 66 P.S.I.  
Final Closed In Period ..... Minutes 90 (G) 619 P.S.I.  
Final Hydrostatic Pressure ..... (H) 2113 P.S.I.

## GENERAL INFORMATION

### Client Information:

Company: TRANS PACIFIC OIL CORP.

Contact: GARY SHARP

Phone: Fax: e-mail:

### Site Information:

Contact: BRYCE BIDLEMAN

Phone: Fax: e-mail:

### Well Information:

Name: EVEL 'A' UNIT #1-14

Operator: TRANS PACIFIC OIL CORP.

Location-Downhole: DST #5 KC. 220' ZONE 4,215 - 4,250

Location-Surface: sec 14-16S-27W LANE COUNTY

### Test Information:

Company: DIAMOND TESTING

Representative: CHRIS

Supervisor: BRYCE BIDLEMAN

Test Type: CONVENTIONAL Job Number:

Test Unit: NO. 1

Start Date: 2008/02/28 Start Time: 16:01:00

End Date: 2008/02/29 End Time: 00:06:00

Report Date: Prepared By:

Remarks: Qualified By:

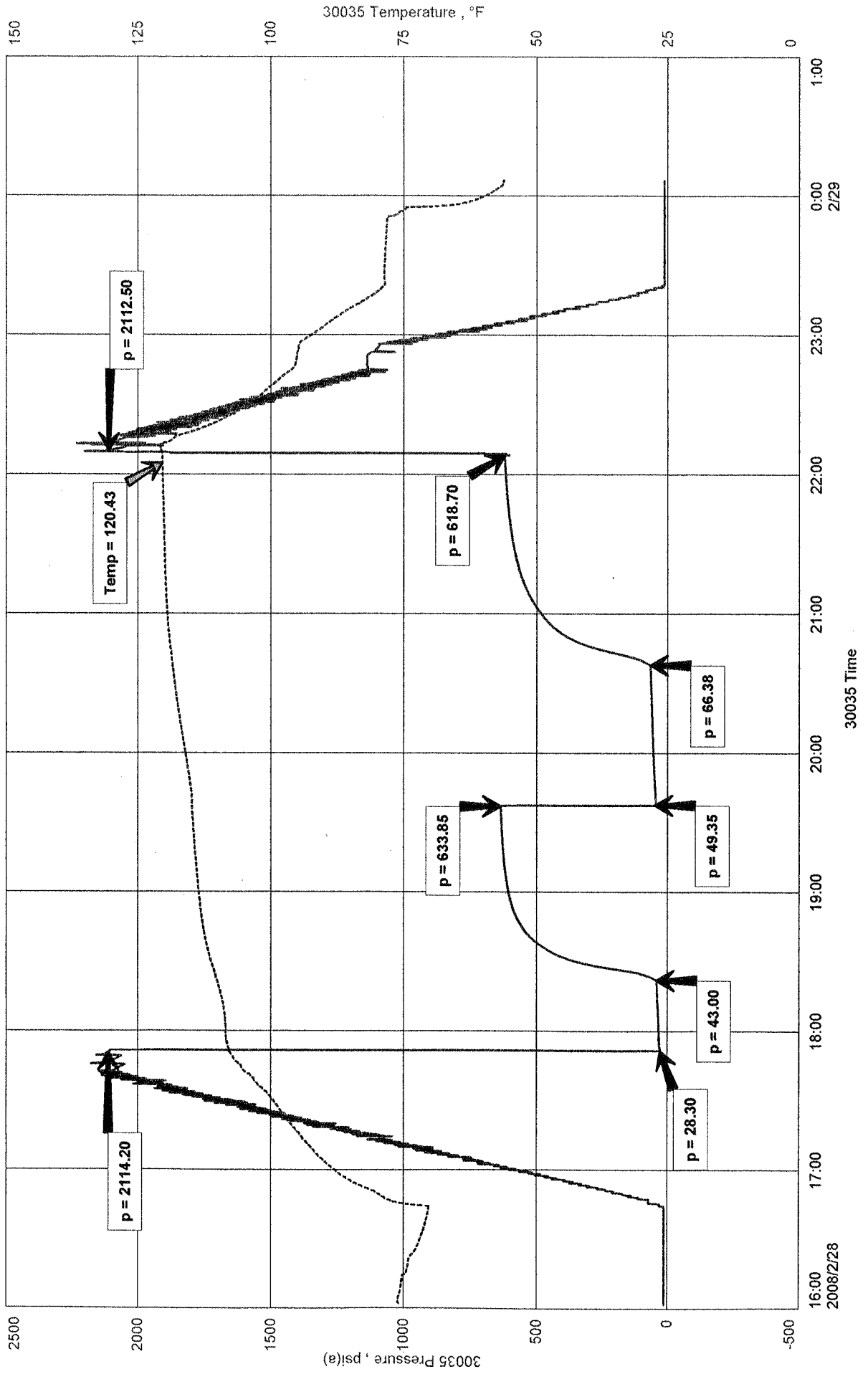
RECOVERED: 282' G.I.P.  
30' H.O.C.W.M. 50% MUD, 45% OIL, 5% WTR  
60' M.W. 55% WTR, 45% MUD CHLORIDES: 35,000 ppm  
90' TOTAL FLUID

TOOL SAMPLE: 80% WTR, 10% MUD WITH A SCUM OF OIL

TRANS PACIFIC OIL CORP.  
 DST #5 KC. 220' ZONE 4,215 - 4,250  
 Start Test Date: 2008/02/28  
 Final Test Date: 2008/02/29

EVEL 'A' UNIT #1-14  
 Formation: DST #5 KC. 220' ZONE 4,215 - 4,250  
 Pool: WILDCAT

# EVEL 'A' UNIT #1-14



DST # 5

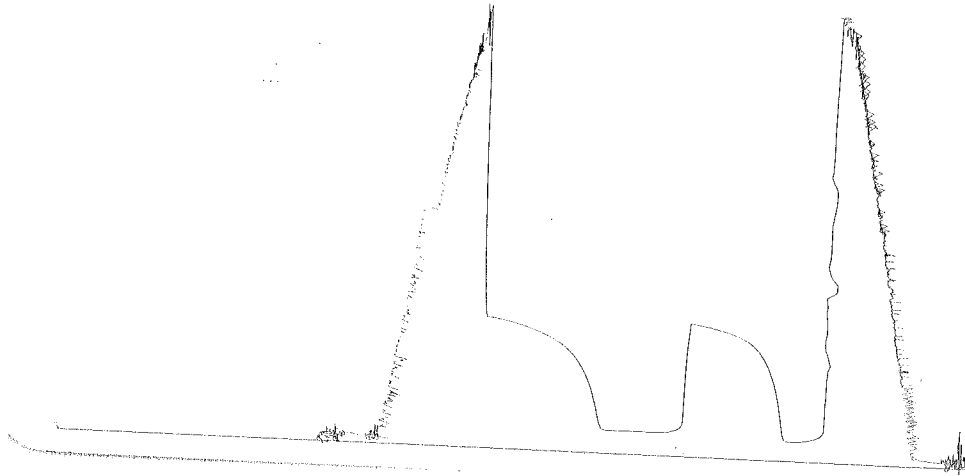
Outside

13389

9215-4280

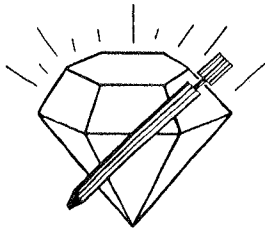
KC. 220' zone

LOC. 4247



This is an actual photograph of recorder chart.

POINT	PRESSURE		PSI
	Field Reading	Elec. Office Reading	
(A) Initial Hydrostatic Mud .....	2114	2114	PSI
(B) First Initial Flow Pressure.....	28	28	PSI
(C) First Final Flow Pressure .....	43	43	PSI
(D) Initial Closed-in Pressure .....	634	634	PSI
(E) Second Initial Flow Pressure.....	49	49	PSI
(F) Second Final Flow Pressure.....	66	66	PSI
(G) Final Closed-in Pressure.....	619	619	PSI
(H) Final Hydrostatic Mud.....	2113	2113	PSI



# DIAMOND TESTING

P.O. Box 157  
HOISINGTON, KANSAS 67544  
(620) 653-7550 • (800) 542-7313

Company Trans Pacific Oil Corporation Lease & Well No. Evel "A" Unit No. 1-14

Elevation 2668 KB Formation Pleasanton/Marmaton Effective Pay -- Ft. Ticket No. C27

Date 2-29-08 Sec. 14 Twp. 16S Range 27W County Lane State Kansas

Test Approved By W. Bryce Bidleman Diamond Representative Chris Redetzke

Formation Test No. 6 Interval Tested from 4,250 ft. to 4,301 ft. Total Depth 4,301 ft.

Packer Depth 4,245 ft. Size 6 3/4 in. Packer Depth -- ft. Size -- in.

Packer Depth 4,250 ft. Size 6 3/4 in. Packer Depth -- ft. Size -- in.

Depth of Selective Zone Set          ft.

Top Recorder Depth (Inside) 4,253 ft. Recorder Number 30035 Cap. 5,000 psi

Bottom Recorder Depth (Outside) 4,298 ft. Recorder Number 13387 Cap. 4,000 psi

Below Straddle Recorder Depth          ft. Recorder Number          Cap.          psi

Drilling Contractor Duke Drilling Company, Inc. - Rig 4 Drill Collar Length -- ft. I.D. -- in.

Mud Type Chemical Viscosity 59 Weight Pipe Length -- ft. I.D. -- in.

Weight 9.1 Water Loss 8.8 cc. Drill Pipe Length 4,230 ft. I.D. 3 1/2 in.

Chlorides 1,500 P.P.M. Test Tool Length 20 ft. Tool Size 3 1/2 - IF in.

Jars: Make Sterling Serial Number Not Run Anchor Length 51 ft. Size 4 1/2 - FH in.

Did Well Flow? No Reversed Out No Surface Choke Size 1 in. Bottom Choke Size 5/8 in.

Main Hole Size 7 7/8 in. Tool Joint Size 4 1/2 - XH in.

Blow: 1st Open: Weak, surface blow. No blow back during shut-in.  
2nd Open: Weak, surface blow. No blow back during shut-in.

Recovered 10 ft. of slightly oil specked mud with a scum of oil = .142000 bbls. (Grind out: 100%-mud)

Recovered          ft. of         

Recovered          ft. of         

Recovered          ft. of         

Recovered          ft. of         

Remarks Tool Sample Grind Out: 100%-mud with a scum of oil

Time Set Packer(s) 10:43 <sup>A.M.</sup> ~~P.M.~~ Time Started Off Bottom 12:43 <sup>A.M.</sup> ~~P.M.~~ Maximum Temperature 113°

Initial Hydrostatic Pressure ..... (A) 2105 P.S.I.

Initial Flow Period ..... Minutes 30 (B) 26 P.S.I. to (C) 34 P.S.I.

Initial Closed In Period ..... Minutes 30 (D) 57 P.S.I.

Final Flow Period ..... Minutes 30 (E) 25 P.S.I. to (F) 27 P.S.I.

Final Closed In Period ..... Minutes 30 (G) 49 P.S.I.

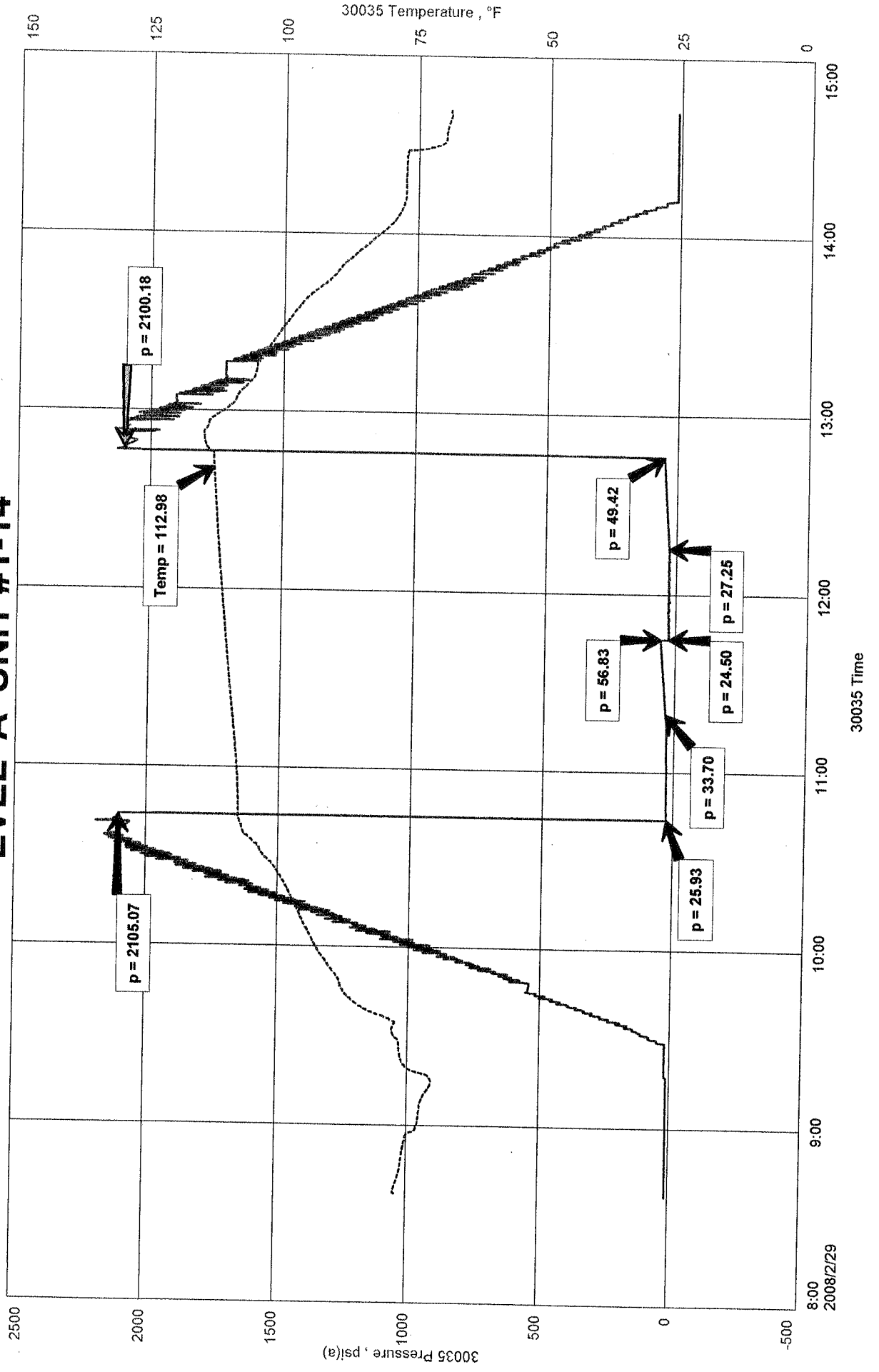
Final Hydrostatic Pressure ..... (H) 2100 P.S.I.



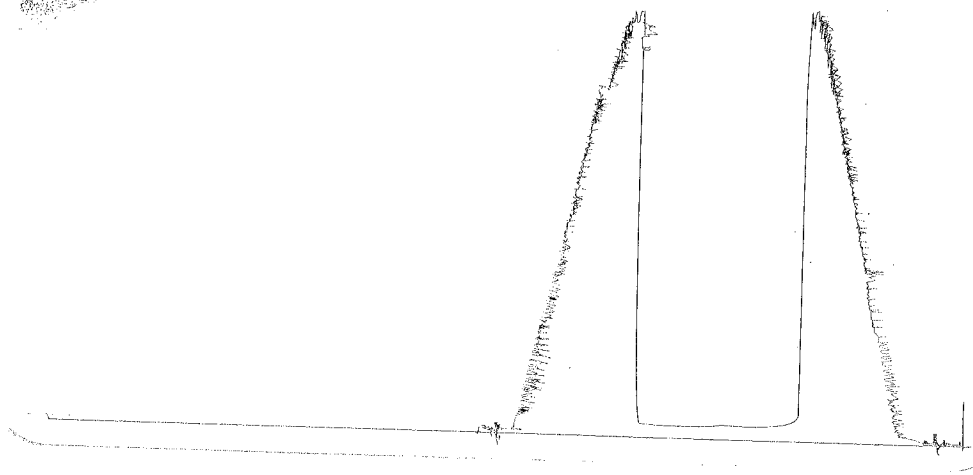
TRANS PACIFIC OIL CORP.  
 DST #6 PLEASANTON / MARMATON 4,250 - 4,301  
 Start Test Date: 2008/02/29  
 Final Test Date: 2008/02/29

# EVEL 'A' UNIT #1-14

EVEL 'A' UNIT #1-14  
 Formation: DST #6 PLEASANTON / MARMATON 4,250 - 4,301  
 Pool: WILDCAT

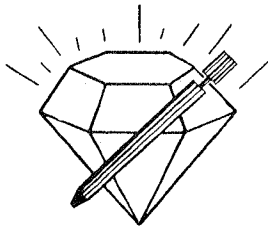


DST #6      outside 13387      4250-4301  
 Pleasanton / Marmaton      Loc. 4298



This is an actual photograph of recorder chart.

POINT	PRESSURE		PSI
	Field Reading	Elec. Office Reading	
(A) Initial Hydrostatic Mud .....	2105	2105	PSI
(B) First Initial Flow Pressure.....	26	26	PSI
(C) First Final Flow Pressure .....	34	34	PSI
(D) Initial Closed-in Pressure .....	57	57	PSI
(E) Second Initial Flow Pressure .....	25	25	PSI
(F) Second Final Flow Pressure.....	27	27	PSI
(G) Final Closed-in Pressure.....	49	49	PSI
(H) Final Hydrostatic Mud .....	2100	2100	PSI



# DIAMOND TESTING

P.O. Box 157  
HOISINGTON, KANSAS 67544  
(620) 653-7550 • (800) 542-7313

Company Trans Pacific Oil Corporation Lease & Well No. Evel "A" Unit No. 1-14

Elevation 2668 KB Formation Marmaton Effective Pay      -- Ft. Ticket No. C28

Date 3-1-08 Sec. 14 Twp. 16S Range 27W County      Lane      State Kansas

Test Approved By W. Bryce Bidleman Diamond Representative Chris Redetzke

Formation Test No. 7 Interval Tested from 4,291 ft. to 4,370 ft. Total Depth 4,370 ft.

Packer Depth 4,286 ft. Size 6 3/4 in. Packer Depth      -- ft. Size      -- in.

Packer Depth 4,291 ft. Size 6 3/4 in. Packer Depth      -- ft. Size      -- in.

Depth of Selective Zone Set      ft.

Top Recorder Depth (Inside) 4,294 ft. Recorder Number 30035 Cap. 5,000 psi

Bottom Recorder Depth (Outside) 4,367 ft. Recorder Number 13387 Cap. 4,000 psi

Below Straddle Recorder Depth      ft. Recorder Number      Cap.      psi

Drilling Contractor Duke Drilling Company, Inc. - Rig 4 Drill Collar Length      -- ft. I.D.      -- in.

Mud Type Chemical Viscosity 58 Weight Pipe Length      -- ft. I.D.      -- in.

Weight 9.2 Water Loss 9.2 cc. Drill Pipe Length 4,271 ft. I.D. 3 1/2 in.

Chlorides 1,900 P.P.M. Test Tool Length 20 ft. Tool Size 3 1/2 - IF in.

Jars: Make Sterling Serial Number Not Run Anchor Length 79 ft. Size 4 1/2 - FH in.

Did Well Flow? No Reversed Out No Surface Choke Size 1 in. Bottom Choke Size 5/8 in.

Main Hole Size 7 7/8 in. Tool Joint Size 4 1/2 - XH in.

Blow: 1st Open: Weak, surface blow. No blow back during shut-in.  
2nd Open: No blow. No blow back during shut-in.

Recovered 5 ft. of mud = .071000 bbls. (Grind out: 100%-mud)

Recovered      ft. of     

Recovered      ft. of     

Recovered      ft. of     

Recovered      ft. of     

Remarks Tool Sample Grind Out: 100%-mud

Time Set Packer(s) 4:12 ~~P.M.~~ <sup>A.M.</sup> Time Started Off Bottom 6:12 ~~P.M.~~ <sup>A.M.</sup> Maximum Temperature 112 °

Initial Hydrostatic Pressure ..... (A) 2154 P.S.I.

Initial Flow Period ..... Minutes 30 (B) 27 P.S.I. to (C) 34 P.S.I.

Initial Closed In Period ..... Minutes 30 (D) 44 P.S.I.

Final Flow Period ..... Minutes 30 (E) 30 P.S.I. to (F) 34 P.S.I.

Final Closed In Period ..... Minutes 30 (G) 36 P.S.I.

Final Hydrostatic Pressure ..... (H) 2150 P.S.I.

## GENERAL INFORMATION

### Client Information:

Company: TRANS PACIFIC OIL CORP.  
Contact: GARY SHARP  
Phone: Fax: e-mail:

### Site Information:

Contact: BRYCE BIDLEMAN  
Phone: Fax: e-mail:

### Well Information:

Name: EVEL 'A' UNIT #1-14  
Operator: TRANS PACIFIC OIL CORP.  
Location-Downhole: DST #7 MARMATON 4,291 - 4,370  
Location-Surface: sec 14-16S-27W LANE COUNTY

### Test Information:

Company: DIAMOND TESTING  
Representative: CHRIS  
Supervisor: BRYCE BIDLEMAN  
Test Type: CONVENTIONAL Job Number:  
Test Unit: NO. 1  
Start Date: 2008/03/01 Start Time: 01:54:00  
End Date: 2008/03/01 End Time: 08:25:00  
Report Date: Prepared By:  
Remarks: Qualified By:

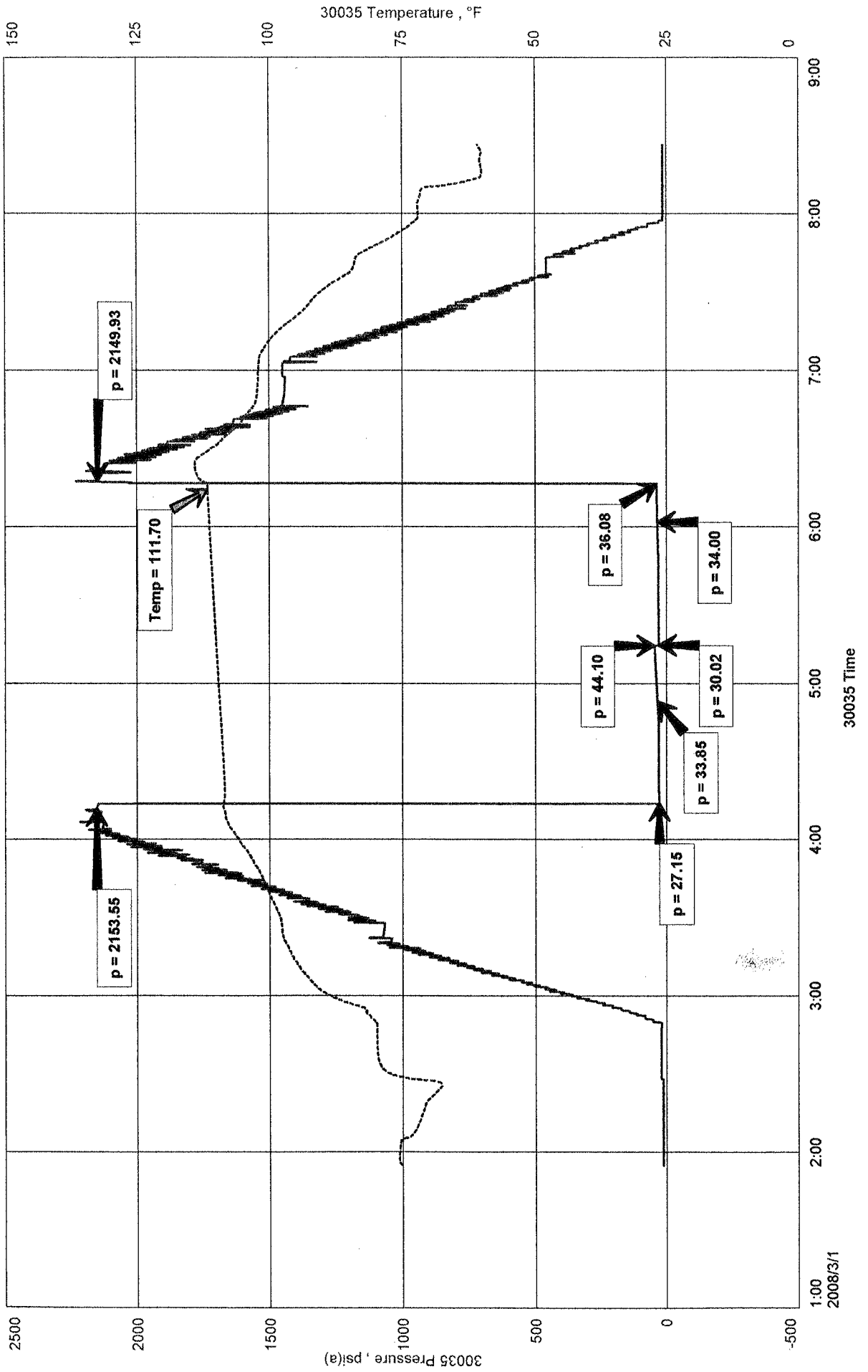
RECOVERED: 5' MUD 100% MUD

TOOL SAMPLE: 100%MUD

TRANS PACIFIC OIL CORP.  
DST #7 MARMATON 4,291 - 4,370  
Start Test Date: 2008/03/01  
Final Test Date: 2008/03/01

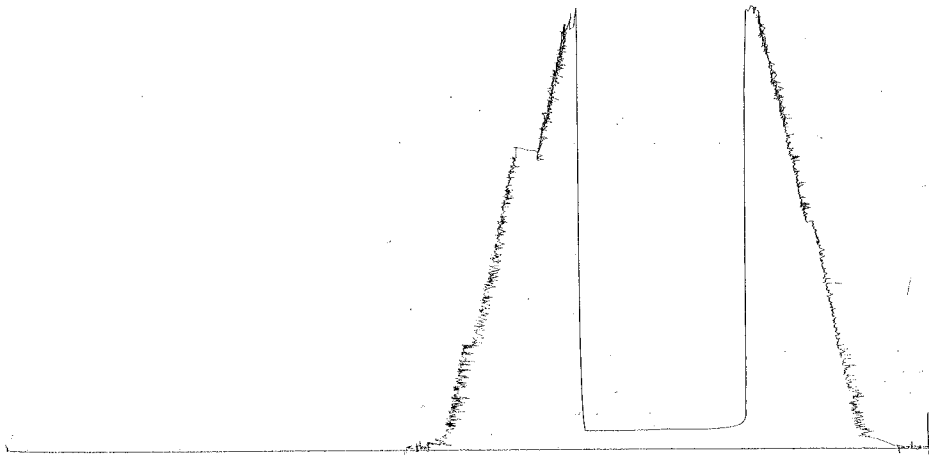
EVEL 'A' UNIT #1-14  
Formation: DST #7 MARMATON 4,291 - 4,370  
Pool: WILDCAT

# EVEL 'A' UNIT #1-14



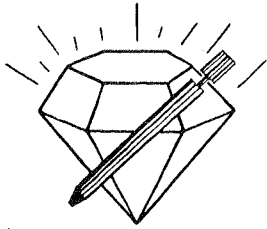
DST # 9  
Marmaton

Outside 1338? 4291-4320  
Loc 4367



This is an actual photograph of recorder chart.

POINT	PRESSURE Elec.		
	Field Reading	Office Reading	
(A) Initial Hydrostatic Mud .....	2154	2154	PSI
(B) First Initial Flow Pressure.....	27	27	PSI
(C) First Final Flow Pressure .....	34	34	PSI
(D) Initial Closed-in Pressure .....	44	44	PSI
(E) Second Initial Flow Pressure .....	30	30	PSI
(F) Second Final Flow Pressure.....	34	34	PSI
(G) Final Closed-in Pressure.....	36	36	PSI
(H) Final Hydrostatic Mud.....	2150	2150	PSI



DIAMOND TESTING

P.O. Box 157
HOISINGTON, KANSAS 67544
(620) 653-7550 • (800) 542-7313

Company Trans Pacific Oil Corporation Lease & Well No. Evel "A" Unit No. 1-14

Elevation 2668 KB Formation Fort Scott Effective Pay -- Ft. Ticket No. C29

Date 3-1-08 Sec. 14 Twp. 16S Range 27W County Lane State Kansas

Test Approved By W. Bryce Bidleman Diamond Representative Chris Redetzke

Formation Test No. 8 Interval Tested from 4,426 ft. to 4,466 ft. Total Depth 4,466 ft.

Packer Depth 4,421 ft. Size 6 3/4 in. Packer Depth -- ft. Size -- in.

Packer Depth 4,426 ft. Size 6 3/4 in. Packer Depth -- ft. Size -- in.

Depth of Selective Zone Set ft.

Top Recorder Depth (Inside) 4,429ft. Recorder Number 30035 Cap. 5,000 psi

Bottom Recorder Depth (Outside) 4,463ft. Recorder Number 13387 Cap. 4,000 psi

Below Straddle Recorder Depth ft. Recorder Number Cap. psi

Drilling Contractor Duke Drilling Company, Inc. - Rig 4 Drill Collar Length -- ft. I.D. -- in.

Mud Type Chemical Viscosity 54 Weight Pipe Length -- ft. I.D. -- in.

Weight 9.3 Water Loss 9.2 cc. Drill Pipe Length 4,406 ft. I.D. 3 1/2 in.

Chlorides 2,000 P.P.M. Test Tool Length 20ft. Tool Size 3 1/2 - IF in.

Jars: Make Sterling Serial Number Not Run Anchor Length 40ft. Size 4 1/2 - FH in.

Did Well Flow? No Reversed Out No Surface Choke Size 1 in. Bottom Choke Size 5/8 in.

Main Hole Size 7 7/8 in. Tool Joint Size 4 1/2 - XH in.

Blow: 1st Open: Weak, 1/2 in., blow. No blow back during shut-in.

2nd Open: Weak, surface blow. No blow back during shut-in.

Recovered 5 ft. of slightly oil specked mud with a scum of oil = .071000 bbls. (Grind out: 100%-mud)

Recovered ft. of

Recovered ft. of

Recovered ft. of

Recovered ft. of

Remarks Tool Sample Grind Out: 100%-mud with a scum of oil

Time Set Packer(s) 10:33 P.M. Time Started Off Bottom 1:03 P.M. Maximum Temperature 118°

Initial Hydrostatic Pressure (A) 2209 P.S.I.

Initial Flow Period Minutes 30 (B) 26 P.S.I. to (C) 28 P.S.I.

Initial Closed In Period Minutes 60 (D) 84 P.S.I.

Final Flow Period Minutes 30 (E) 25 P.S.I. to (F) 28 P.S.I.

Final Closed In Period Minutes 30 (G) 51 P.S.I.

Final Hydrostatic Pressure (H) 2198 P.S.I.

## GENERAL INFORMATION

### Client Information:

Company: TRANS PACIFIC OIL CORP.

Contact: GARY SHARP

Phone: Fax: e-mail:

### Site Information:

Contact: BRYCE BIDLEMAN

Phone: Fax: e-mail:

### Well Information:

Name: EVEL 'A' UNIT #1-14

Operator: TRANS PACIFIC OIL CORP.

Location-Downhole: DST#8 MARMATON 4,426 - 4,466

Location-Surface: sec 14-16S-27W LANE COUNTY

### Test Information:

Company: DIAMOND TESTING

Representative: CHRIS

Supervisor: BRYCE BIDLEMAN

Test Type: CONVENTIONAL

Job Number:

Test Unit: NO. 1

Start Date: 2008/03/01

Start Time: 20:53:00

End Date: 2008/03/02

End Time: 03:02:00

Report Date:

Prepared By:

### Remarks:

Qualified By:

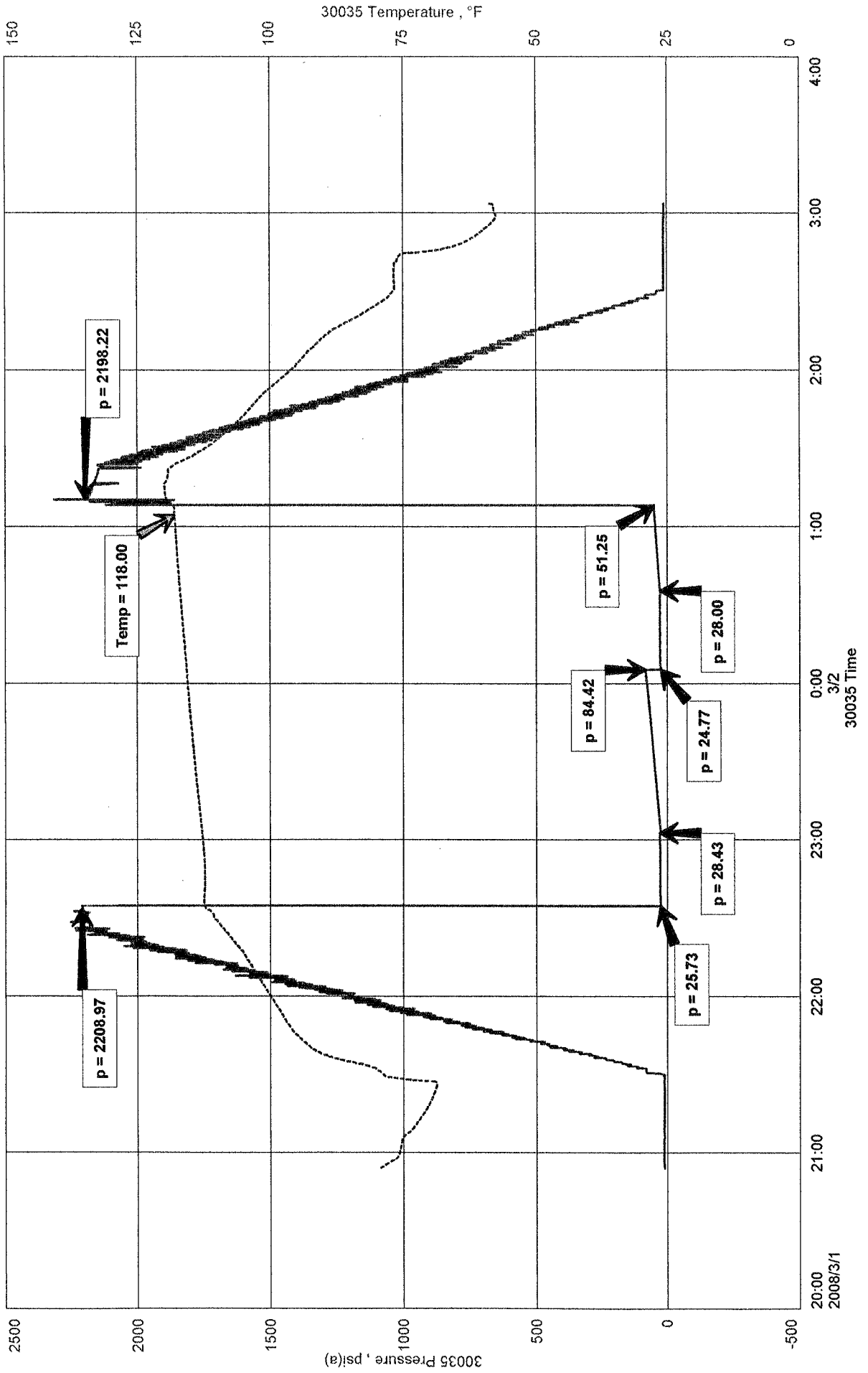
RECOVERED: 5' S.O.S.M. 100% MUD WIYH A SCUM OF OIL

TOOL SAMPLE: 100% MUD WITH A SCUM OF OIL

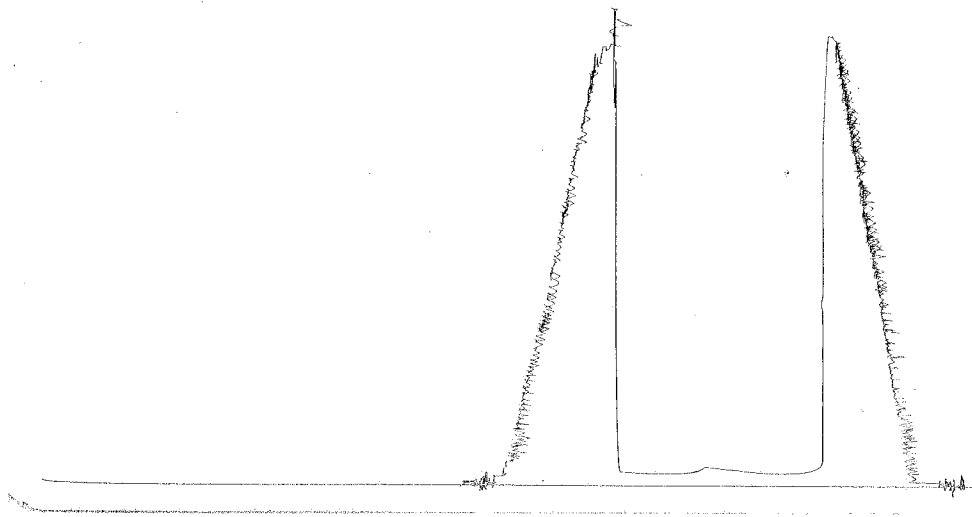
TRANS PACIFIC OIL CORP.  
 DST#8 MARMATON 4,426 - 4,466  
 Start Test Date: 2008/03/01  
 Final Test Date: 2008/03/02

EVEL 'A' UNIT #1-14  
 Formation: DST#8 MARMATON 4,426 - 4,466  
 Pool: WILDCAT

# EVEL 'A' UNIT #1-14

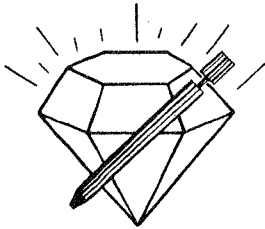


DST #8      outside 13387      4426-4466  
Marmaton      Loc. 4463



This is an actual photograph of recorder chart.

POINT	PRESSURE		Elec. Office Reading	PSI
	Field Reading			
(A) Initial Hydrostatic Mud .....	2209	2209	2209	PSI
(B) First Initial Flow Pressure.....	26	26	26	PSI
(C) First Final Flow Pressure .....	28	28	28	PSI
(D) Initial Closed-in Pressure .....	84	84	84	PSI
(E) Second Initial Flow Pressure .....	25	25	25	PSI
(F) Second Final Flow Pressure.....	28	28	28	PSI
(G) Final Closed-in Pressure.....	51	51	51	PSI
(H) Final Hydrostatic Mud .....	2198	2198	2198	PSI



DIAMOND TESTING

P.O. Box 157
HOISINGTON, KANSAS 67544
(620) 653-7550 • (800) 542-7313

Company Trans Pacific Oil Corporation Lease & Well No. Evel "A" Unit No. 1-14

Elevation 2668 KB Formation Mississippi Effective Pay -- Ft. Ticket No. C30

Date 3-2-08 Sec. 14 Twp. 16S Range 27W County Lane State Kansas

Test Approved By W. Bryce Bidleman Diamond Representative Chris Redetzke

Formation Test No. 9 Interval Tested from 4,502 ft. to 4,550 ft. Total Depth 4,550 ft.

Packer Depth 4,497 ft. Size 6 3/4 in. Packer Depth -- ft. Size -- in.

Packer Depth 4,502 ft. Size 6 3/4 in. Packer Depth -- ft. Size -- in.

Depth of Selective Zone Set ft.

Top Recorder Depth (Inside) 4,505 ft. Recorder Number 30035 Cap. 5,000 psi

Bottom Recorder Depth (Outside) 4,547 ft. Recorder Number 13387 Cap. 4,000 psi

Below Straddle Recorder Depth ft. Recorder Number Cap. psi

Drilling Contractor Duke Drilling Company, Inc. - Rig 4 Drill Collar Length -- ft. I.D. -- in.

Mud Type Chemical Viscosity 53 Weight Pipe Length -- ft. I.D. -- in.

Weight 9.1 Water Loss 8.8 cc. Drill Pipe Length 4,482 ft. I.D. 3 1/2 in.

Chlorides 2,000 P.P.M. Test Tool Length 20 ft. Tool Size 3 1/2 - IF in.

Jars: Make Sterling Serial Number Not Run Anchor Length 48 ft. Size 4 1/2 - FH in.

Did Well Flow? No Reversed Out No Surface Choke Size 1 in. Bottom Choke Size 5/8 in.

Main Hole Size 7 7/8 in. Tool Joint Size 4 1/2 - XH in.

Blow: 1st Open: Fair, 1/2 in., blow increasing to 1 1/2 ins. No blow back during shut-in.

2nd Open: Weak, surface blow. No blow back during shut-in.

Recovered 80 ft. of gas in pipe

Recovered 3 ft. of free oil = .042600 bbls. (Gravity: 36.8 @ 60°)

Recovered 37 ft. of heavy oil cut mud = .525400 bbls. (Grind out: 57%-oil; 43%-mud)

Recovered 40 ft. of TOTAL FLUID = .568000 bbls.

Recovered ft. of

Remarks Tool Sample Grind Out: 20%-oil; 80%-mud

Time Set Packer(s) 6:38 AM P.M. Time Started Off Bottom 10:53 AM P.M. Maximum Temperature 123°

Initial Hydrostatic Pressure (A) 2291 P.S.I.

Initial Flow Period Minutes 30 (B) 30 P.S.I. to (C) 34 P.S.I.

Initial Closed In Period Minutes 75 (D) 1230 P.S.I.

Final Flow Period Minutes 60 (E) 35 P.S.I. to (F) 44 P.S.I.

Final Closed In Period Minutes 90 (G) 1138 P.S.I.

Final Hydrostatic Pressure (H) 2297 P.S.I.

## GENERAL INFORMATION

### Client Information:

Company: TRANS PACIFIC OIL CORP.  
Contact: GARY SHARP  
Phone: Fax: e-mail:

### Site Information:

Contact: BRYCE BIDLEMAN  
Phone: Fax: e-mail:

### Well Information:

Name: EVEL 'A' UNIT #1-14  
Operator: TRANS PACIFIC OIL CORP.  
Location-Downhole: DST #9 MISSISSIPPI 4,502 - 4,550  
Location-Surface: sec 14-16S-27W LANE COUNTY

### Test Information:

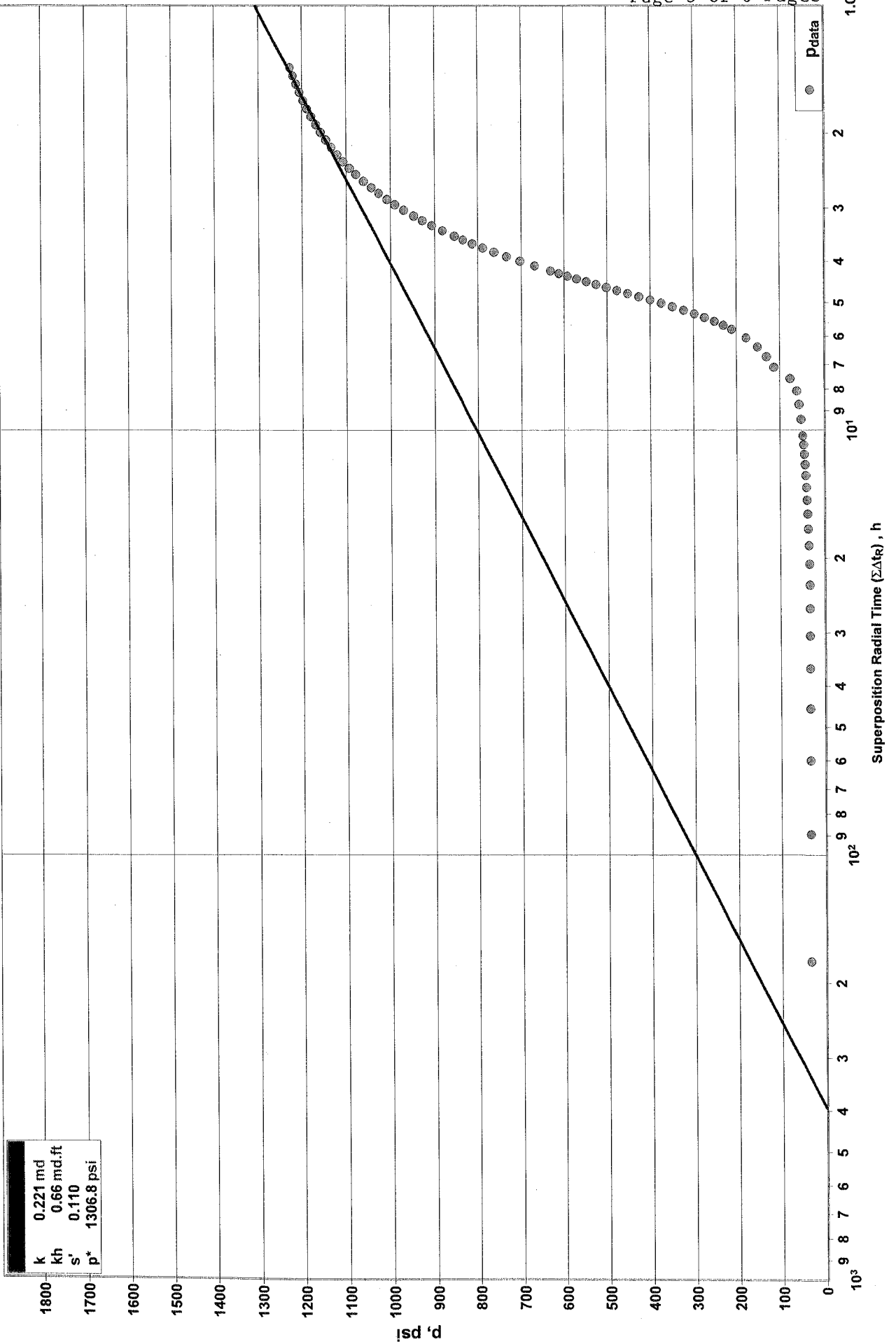
Company: DIAMOND TESTING  
Representative: CHRIS  
Supervisor: BRYCE BIDLEMAN  
Test Type: CONENTIONAL Job Number:  
Test Unit: NO. 1  
Start Date: 2008/03/02 Start Time: 16:30:00  
End Date: 2008/03/03 End Time: 00:55:00  
Report Date: Prepared By:  
Remarks: Qualified By:

RECOVERED: 80' G.I.P.  
3' FREE OIL GRFAVITY: 36.8 @ 60 deg. F.  
37' H.O.C.M. 57% OIL, 43% MUD  
40' TOTAL FLUID

TOOL SAMPLE: 20% OIL 80% MUD

# DST #9 INITIAL SHUT-IN HORNER PLOT

TRANS PACIFIC OIL CORP.  
EVEL 'A' #1-14  
DST #9



# Oil Well Test - Buildup Radial Flow Analysis

Page 4 of 6 Pages

TRANS PACIFIC OIL CORP.

DST #9

EVEL 'A' #1-14

## Analysis Results

Total Sandface Rate ( $q_t B_t$ )	1.812 bbl/d	Apparent Skin ( $s'$ )	0.803
Semilog Slope (m)	503.65	Skin - Damage	0.803
Gas Permeability ( $k_g$ )	md	Skin - Inclination	
Oil Permeability ( $k_o$ )	0.097 md	Skin - Partial Penetration	
Water Permeability ( $k_w$ )	md	Pressure Drop Due to Skin ( $\Delta p_s$ )	351.38 psi
Flow Capacity (kh)	0.292 md.ft	Damage Ratio (DR)	1.165
Total Mobility ( $k'/\mu_t$ )	0.19 md/cp	Flow Efficiency (FE)	0.858
Total Transmissivity (kh/ $\mu_t$ )	0.58 md.ft/cp		

## Reservoir Parameters

Net Pay (h)	3.000 ft
Total Porosity ( $\phi_t$ )	12.00 %
Water Saturation ( $S_w$ )	20.00 %
Oil Saturation ( $S_o$ )	80.00 %
Gas Saturation ( $S_g$ )	0.00 %
Wellbore Radius ( $r_w$ )	0.30 ft
Formation Temperature (T)	1202.0 °F
Formation Compressibility ( $c_f$ )	4.508e-6 psi <sup>-1</sup>
Total Compressibility ( $c_t$ )	7.740e-5 psi <sup>-1</sup>

## Pressures

Initial Pressure ( $p_i$ )	2508.78 psi
Extrapolated Pressure ( $p^*$ )	1306.83 psi
Final Flowing Pressure ( $p_{wfo}$ )	34.08 psi

## Production and Times

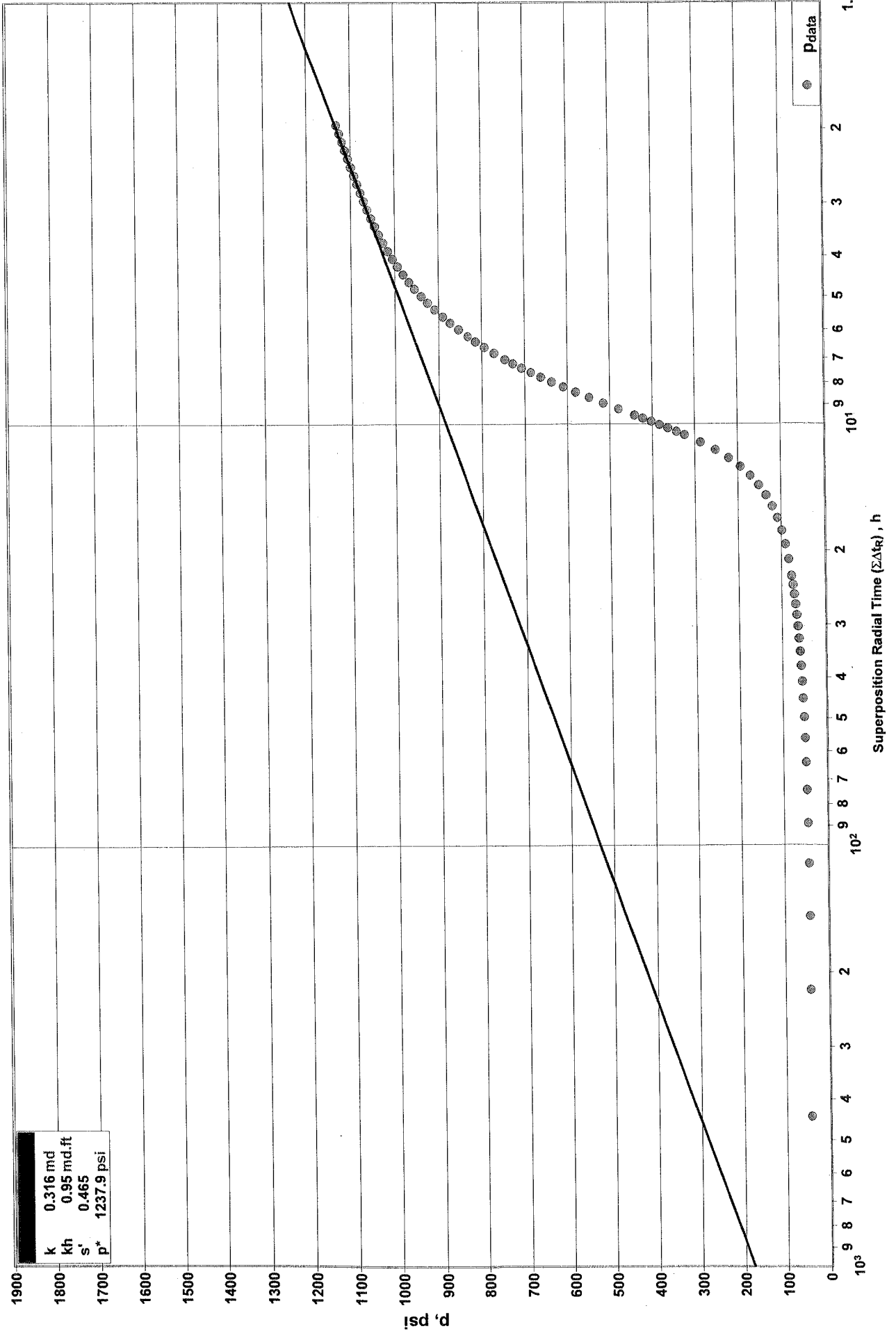
Corrected Flow Time ( $t_c$ )	0.4917 hr
Cumulative Oil Production	0.021 bbl
Final Oil Rate	1.000 bbl/d

## Fluid Properties

Oil Compressibility ( $c_o$ )	7.96478e-5 psi <sup>-1</sup>
Oil Formation Volume Factor ( $B_o$ )	1.812
Oil Viscosity ( $\mu_o$ )	0.500 cp
Solution Gas Ratio ( $R_s$ )	211 scf/bbl
Oil Gravity ( $\gamma_o$ )	36.00° API
Gas Gravity (G)	0.650
PVT Reference Pressure ( $p_{pVT}$ )	2508.78 psi

**DST #9 FINAL SHUT-IN**  
HORNER PLOT

TRANS PACIFIC OIL CORP.  
EVEL 'A' #1-14  
DST #9



# Oil Well Test - Buildup Radial Flow Analysis

TRANS PACIFIC OIL CORP.  
EVEL 'A' #1-14

DST #9

## Analysis Results

Total Sandface Rate ( $q_{tBt}$ )	1.812 bbl/d	Apparent Skin ( $s'$ )	1.158
Semilog Slope (m)	353.17	Skin - Damage	1.158
Gas Permeability ( $k_G$ )	md	Skin - Inclination	
Oil Permeability ( $k_O$ )	0.139 md	Skin - Partial Penetration	
Water Permeability ( $k_W$ )	md	Pressure Drop Due to Skin ( $\Delta p_S$ )	355.36 psi
Flow Capacity (kh)	0.417 md.ft	Damage Ratio (DR)	1.168
Total Mobility ( $k/\mu_{L,t}$ )	0.28 md/cp	Flow Efficiency (FE)	0.856
Total Transmissivity ( $kh/\mu_{L,t}$ )	0.83 md.ft/cp		

## Reservoir Parameters

Net Pay (h)	3.000 ft
Total Porosity ( $\phi_t$ )	12.00%
Water Saturation ( $S_W$ )	20.00%
Oil Saturation ( $S_O$ )	80.00%
Gas Saturation ( $S_G$ )	0.00%
Wellbore Radius ( $r_W$ )	0.30 ft
Formation Temperature (T)	1202.0°F
Formation Compressibility ( $c_f$ )	4.508e-6 psi <sup>-1</sup>
Total Compressibility ( $c_t$ )	7.740e-5 psi <sup>-1</sup>

## Pressures

Initial Pressure ( $p_i$ )	2508.78 psi
Extrapolated Pressure ( $p^*$ )	1237.88 psi
Final Flowing Pressure ( $p_{wfo}$ )	43.17 psi

## Production and Times

Corrected Flow Time ( $t_c$ )	1.4917 hr
Cumulative Oil Production	0.062 bbl
Final Oil Rate	1.000 bbl/d

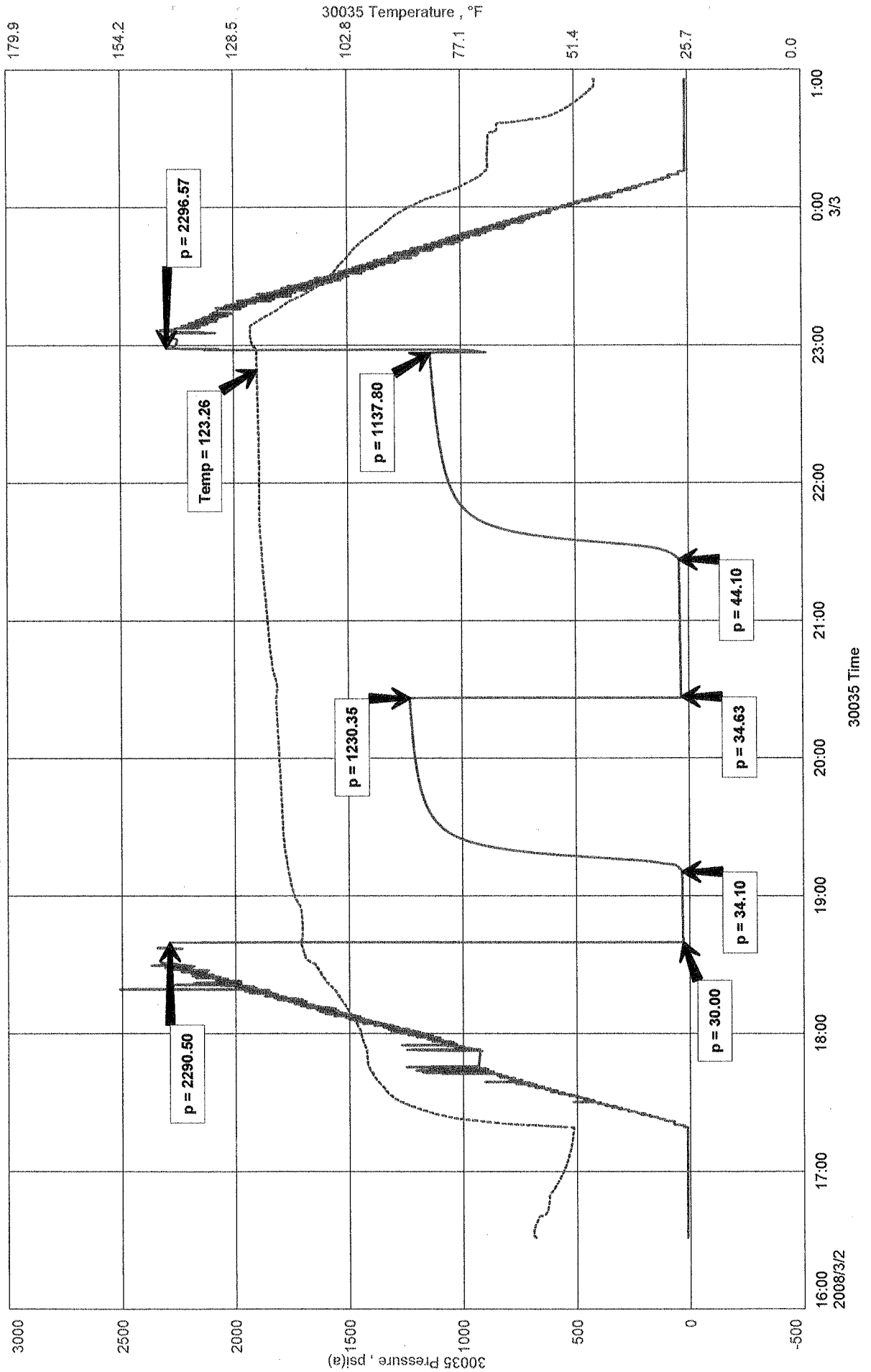
## Fluid Properties

Oil Compressibility ( $c_O$ )	7.96478e-5 psi <sup>-1</sup>
Oil Formation Volume Factor ( $B_O$ )	1.812
Oil Viscosity ( $\mu_{L,O}$ )	0.500 cp
Solution Gas Ratio ( $R_S$ )	211 scf/bbl
Oil Gravity ( $\gamma_O$ )	36.00° API
Gas Gravity (G)	0.650
PVT Reference Pressure ( $p_{pVT}$ )	2508.78 psi

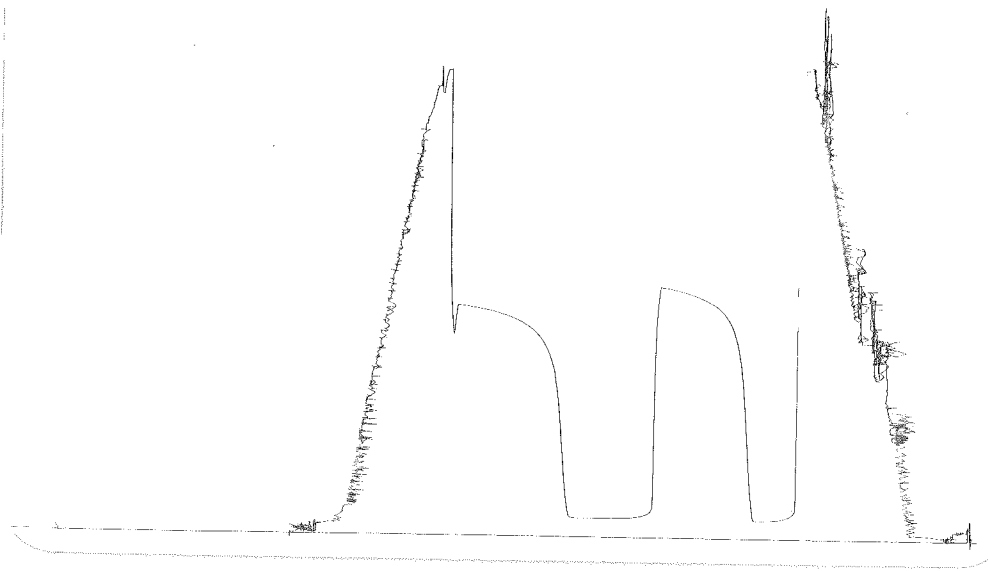
TRANS PACIFIC OIL CORP.  
DST #9 MISSISSIPPI 4,502 - 4,550  
Start Test Date: 2008/03/02  
Final Test Date: 2008/03/03

EVEL 'A' UNIT #1-14  
Formation: DST #9 MISSISSIPPI 4,502 - 4,550  
Pool: WILDCAT

# EVEL 'A' UNIT #1-14



DST # 9 • Outside 13387 4502-4580  
 Mississippi Loc. 4547



This is an actual photograph of recorder chart.

POINT	PRESSURE		PSI
	Field Reading	Elec. Office Reading	
(A) Initial Hydrostatic Mud .....	2291	2291	PSI
(B) First Initial Flow Pressure.....	30	30	PSI
(C) First Final Flow Pressure .....	34	34	PSI
(D) Initial Closed-in Pressure .....	1230	1230	PSI
(E) Second Initial Flow Pressure .....	35	35	PSI
(F) Second Final Flow Pressure.....	44	44	PSI
(G) Final Closed-in Pressure.....	1138	1138	PSI
(H) Final Hydrostatic Mud.....	2297	2297	PSI