

15-101-21956

25-165-27w

DIAMOND TESTING

P.O. Box 157

HOISINGTON, KANSAS 67544

(620) 653-7550 • (800) 542-7313
STC 21098, D310

Company Trans Pacific Oil Corporation Lease & Well No. Klitzke "A" No. 1-25
 Elevation 2692KB Formation Kansas City 70' Effective Pay Ft. Ticket No. 2192
 Date 9-25-06 Sec. 25 Twp. 16S Range 27W County Lane State Kansas
 Test Approved By W. Bryce Bidleman Diamond Representative Roger D. Friedly

Formation Test No. 1 Interval Tested from 4,050 ft. to 4,075 ft. Total Depth 4,075 ft.
 Packer Depth 4,045 ft. Size 6 3/4 in. Packer Depth ft. Size in.
 Packer Depth 4,050 ft. Size 6 3/4 in. Packer Depth ft. Size in.
 Depth of Selective Zone Set ft.

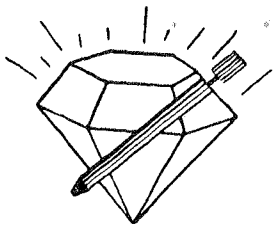
Top Recorder Depth (Inside) 4,038 ft. Recorder Number 21098 Cap. 5,000 psi
 Bottom Recorder Depth (Outside) 4,072 ft. Recorder Number 13387 Cap. 4,000 psi
 Below Straddle Recorder Depth ft. Recorder Number Cap. psi

Drilling Contractor Duke Drilling Co., Inc. - Rig 4 Drill Collar Length ft. I.D. in.
 Mud Type Chemical Viscosity 53 Weight Pipe Length ft. I.D. in.
 Weight 9.2 Water Loss 10.4 cc. Drill Pipe Length 4,025 ft. I.D. 3 1/2 in.
 Chlorides 1,400 P.P.M. Test Tool Length 25 ft. Tool Size 3 1/2 - IF in.
 Jars: Make Bowen Serial Number Not Run Anchor Length 25 ft. Size 4 1/2 - FH in.
 Did Well Flow? No Reversed Out No Surface Choke Size 1 in. Bottom Choke Size 5/8 in.
 Main Hole Size 7 7/8 in. Tool Joint Size 4 1/2 - XH in.

Blow: 1st Open: Weak, 1/8 in., blow increasing to 4 1/2 ins. No blow back during shut-in.
2nd Open: Weak surface blow in 16 mins. increasing to a weak surface blow. No blow back during shut-in.

Recovered 120 ft. of gas in pipe
 Recovered 10 ft. of clean oil = .142000 bbls. Gravity: 40.6 @ 60°
 Recovered 40 ft. of slightly gas & oil cut watery mud = .568000 bbls. (Grind out: 2%-gas; 8%-oil; 30%-water; 60%-mud)
 Recovered 50 ft. of TOTAL FLUID = .710000 bbls.
 Recovered ft. of
 Remarks Tool Sample Grind Out: 1%-oil; 3%-mud; 96%-water

Time Set Packer(s)	<u>4:59</u>	XXX P.M.	Time Started Off Bottom	<u>9:14</u>	XXX P.M.	Maximum Temperature	<u>117°</u>
Initial Hydrostatic Pressure		(A)	<u>1926</u>	P.S.I.			
Initial Flow Period	Minutes	<u>30</u>	(B)	<u>8</u>	P.S.I. to (C)	<u>16</u>	P.S.I.
Initial Closed In Period	Minutes	<u>75</u>	(D)	<u>253</u>	P.S.I.		
Final Flow Period	Minutes	<u>60</u>	(E)	<u>18</u>	P.S.I. to (F)	<u>28</u>	P.S.I.
Final Closed In Period	Minutes	<u>90</u>	(G)	<u>183</u>	P.S.I.		
Final Hydrostatic Pressure		(H)	<u>1925</u>	P.S.I.			



DIAMOND TESTING
P. O. Box 157
HOISINGTON, KANSAS 67544
(800) 542-7313

FLUID SAMPLE DATA

Company Trans Pacific Oil Corporation
Lease & Well No. Klitzke "A" No. 1-25
Date 9-25-06 Sec. 25 Twp. 16 S Range 27 W
Formation Test No. 1 Interval Tested From 4,050 ft. to 4,075 ft. Total Depth 4,075 ft.
Formation Kansas City 70'

	<u>MUD PIT</u>	<u>RECOVERY</u>	<u>RECOVERY</u>
Viscosity	<u>53</u> CP	<u>--</u> CP	
Weight	<u>9.2</u>	<u>--</u>	
Water Loss	<u>10.4</u> CC	<u>--</u> CC	
PH Factor	<u>10.5</u>	<u>--</u>	<u>Water</u> <u>7.0</u>

	<u>RESISTIVITY</u>	<u>CHLORIDE CONTENT</u>
Recovery Water	<u>.16 @ 70 °F.</u>	<u>42,000 ppm</u>
Recovery Mud	<u>-- @ -- °F.</u>	<u>-- ppm</u>
Recovery Mud Filtrate	<u>-- @ -- °F.</u>	<u>-- ppm</u>
Mud Pit Sample	<u>1.30 @ 82 °F.</u>	<u>4,200 ppm</u>
Mud Pit Sample Filtrate	<u>1.50 @ 84 °F.</u>	<u>3,200 ppm</u>

Sample Taken By ROGER D. FRIEDLY

Witness By W. BRYCE BIDLEMAN

Remarks Pit filtrate triton dish chlorides were 1,400 Ppm
Recovery water dish chlorides were 38,000 Ppm

GENERAL INFORMATION

Client Information:

Company: TRANS PACIFIC OIL CORPORATION

Contact: ALAN BANTA

Phone: Fax: e-mail:

Site Information:

Contact: BRYCE BIDLEMAN

Phone: Fax: e-mail:

Well Information:

Name: KLITZKE 'A' # 1-25

Operator: TRANS PACIFIC OIL CORPORATION

Location-Downhole: DST #1 KC 70' 4,050' - 4,075'

Location-Surface: SEC 25-16S-27W LANE COUNTY KANSAS

Test Information:

Company: DIAMOND TESTING

Representative: ROGER D. FRIEDLY

Supervisor: BRYCE BIDLEMAN

Test Type: CONVENTIONAL Job Number:

Test Unit: NO. 1

Start Date: 2006/09/25 Start Time: 14:49:00

End Date: 2006/09/25 End Time: 23:14:00

Report Date: Prepared By:

Remarks: Qualified By:

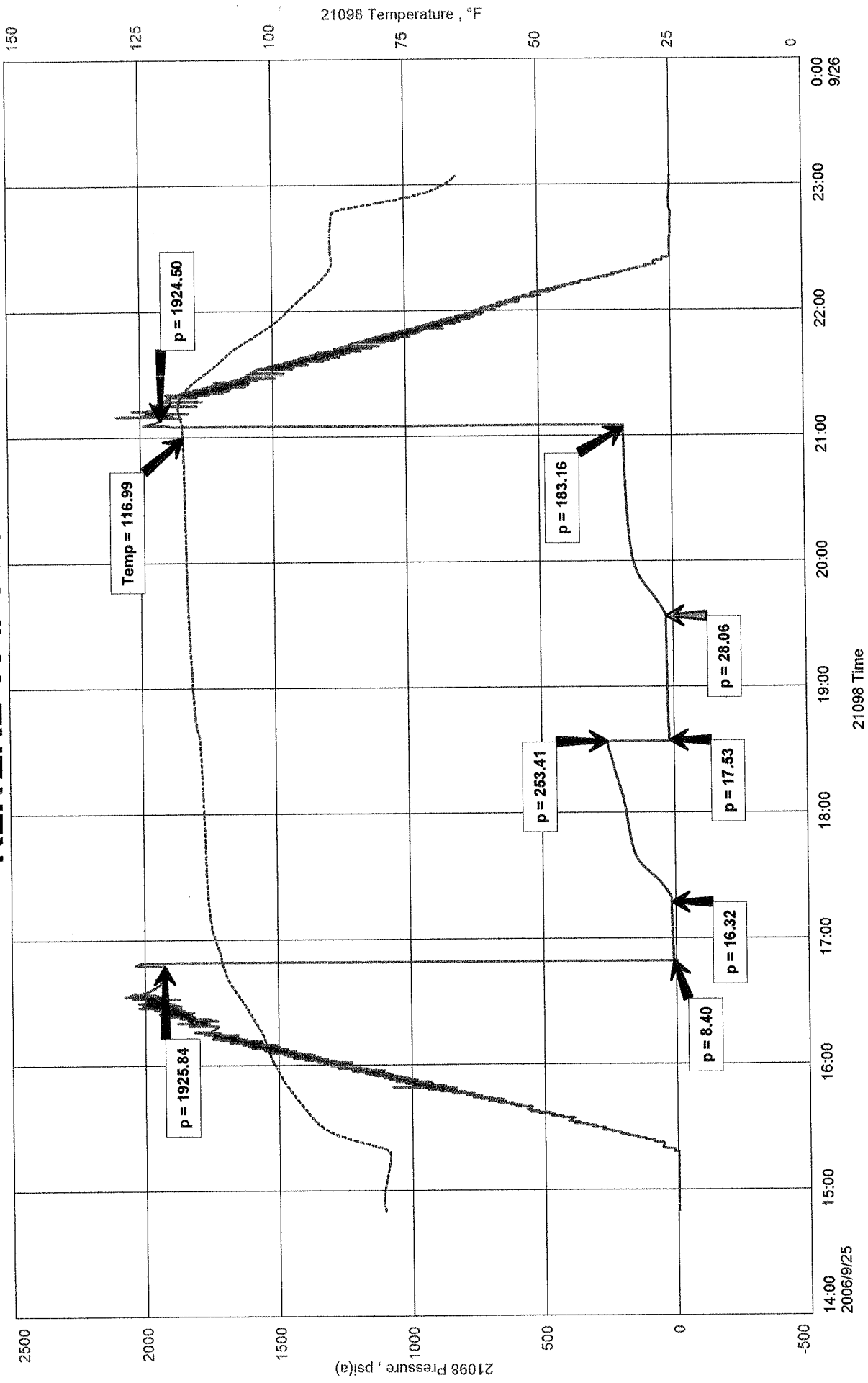
RECOVERED: 120' GAS IN PIPE
10' CLEAN OIL 40.6 GRAVITY @ 60 deg.
40' SLTG&OCWM 2% GAS, 8% OIL, 30% WTR, 60% MUD
50' TOTAL FLUID

TOOL SAMPLE: 1% OIL, 3% MUD, 96% WTR

TRANS PACIFIC OIL CORPORATION
 DST #1 KC 70' 4,050' - 4,075'
 Start Test Date: 2006/09/25
 Final Test Date: 2006/09/25

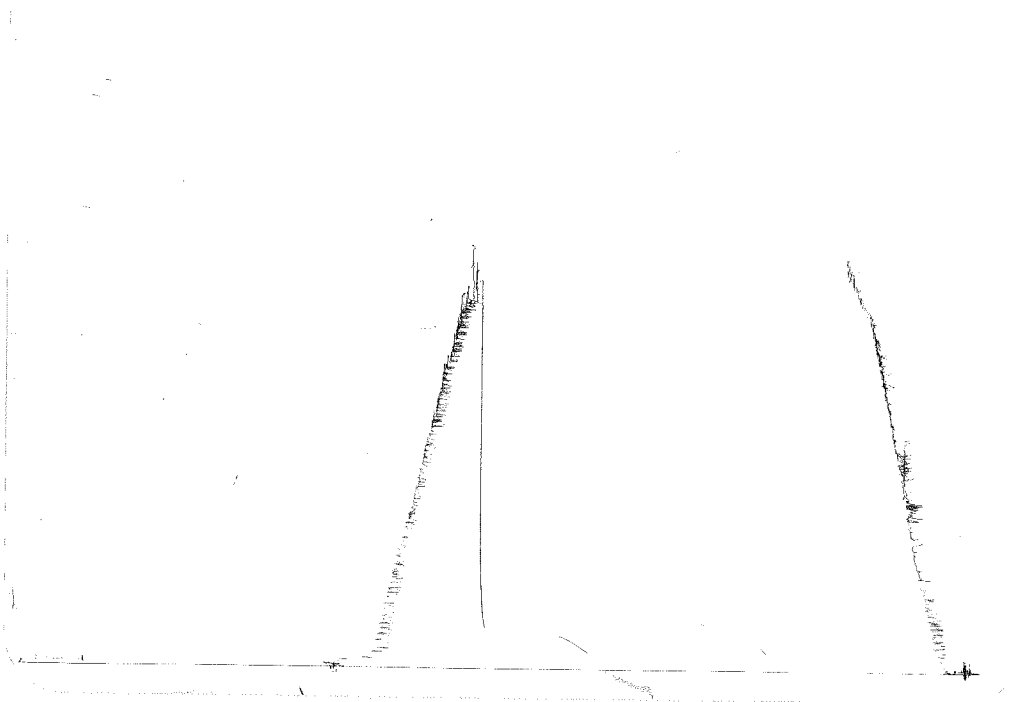
KLITZKE 'A' # 1-25
 Formation: DST #1 KC 70' 4,050' - 4,075'
 Pool: WILDCAT

KLITZKE 'A' # 1-25



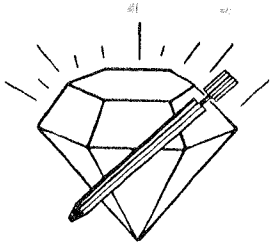
DST # 1 outside 13387
KC 701

4050-4075
LOC 4072



This is an actual photograph of recorder chart.

POINT	PRESSURE		Elec. Office Reading	PSI
	Field Reading			
(A) Initial Hydrostatic Mud	1926	1926	1926	PSI
(B) First Initial Flow Pressure	8	8	8	PSI
(C) First Final Flow Pressure	16	16	16	PSI
(D) Initial Closed-in Pressure	253	253	253	PSI
(E) Second Initial Flow Pressure	18	18	18	PSI
(F) Second Final Flow Pressure	28	28	28	PSI
(G) Final Closed-in Pressure	183	183	183	PSI
(H) Final Hydrostatic Mud	1925	1925	1925	PSI



DIAMOND TESTING

P.O. Box 157
HOISINGTON, KANSAS 67544
(620) 653-7550 • (800) 542-7313
STC 21098.D311

Company Trans Pacific Oil Corporation Lease & Well No. Klitzke "A" No. 1-25
Elevation 2692KB Formation Kansas City 200' Effective Pay -- Ft. Ticket No. 2193
Date 9-27-06 Sec. 25 Twp. 16S Range 27W County Lane State Kansas
Test Approved By W. Bryce Bidleman Diamond Representative Roger D. Friedly

Formation Test No. 2 Interval Tested from 4,213 ft. to 4,244 ft. Total Depth 4,250 ft.
Packer Depth 4,208 ft. Size 6 3/4 in. Packer Depth 4,244 ft. Size 6 3/4 in.
Packer Depth 4,213 ft. Size 6 3/4 in. Packer Depth -- ft. Size -- in.
Depth of Selective Zone Set ft.

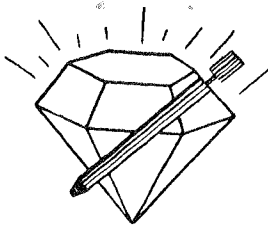
Top Recorder Depth (Inside) 4,201 ft. Recorder Number 21098 Cap. 5,000 psi
Bottom Recorder Depth (Outside) 4,237 ft. Recorder Number 13387 Cap. 4,000 psi
Below Straddle Recorder Depth 4,247 ft. Recorder Number 13387 Cap. 4,000 psi

Drilling Contractor Duke Drilling Co., Inc. - Rig 4 Drill Collar Length -- ft. I.D. -- in.
Mud Type Chemical Viscosity 49 Weight Pipe Length -- ft. I.D. -- in.
Weight 9.2 Water Loss 10.8 cc. Drill Pipe Length 4,188 ft. I.D. 3 1/2 in.
Chlorides 2,400 P.P.M. Test Tool Length 25 ft. Tool Size 3 1/2 - IF in.
Jars: Make Bowen Serial Number Not Run Anchor Length 31' perf. w/6' tail pipe Size 4 1/2 - FH in.
Did Well Flow? No Reversed Out No Surface Choke Size 1 in. Bottom Choke Size 5/8 in.
Main Hole Size 7 7/8 in. Tool Joint Size 4 1/2 - XH in.

Blow: 1st Open: Weak surface blow increasing to 1/8 in. No blow back during shut-in.
2nd Open: Very weak surface blow in 25 mins. No blow back during shut-in.

Recovered 40 ft. of drilling mud = .568000 bbls.
Recovered ft. of
Recovered ft. of
Recovered ft. of
Recovered ft. of
Remarks Below Straddle: 1,133 psi @ end
Tool Sample Grind Out: 100%-drilling mud with a few oil specks

Time Set Packer(s) 12:46 ~~P.M.~~ ^{A.M.} Time Started Off Bottom 2:46 ~~P.M.~~ ^{A.M.} Maximum Temperature 115°
Initial Hydrostatic Pressure 2019 P.S.I.
Initial Flow Period 30 Minutes (B) 6 P.S.I. to (C) 13 P.S.I.
Initial Closed In Period 30 Minutes (D) 924 P.S.I.
Final Flow Period 30 Minutes (E) 16 P.S.I. to (F) 19 P.S.I.
Final Closed In Period 30 Minutes (G) 920 P.S.I.
Final Hydrostatic Pressure 2025 P.S.I. (H)



DIAMOND TESTING
P. O. Box 157
HOISINGTON, KANSAS 67544
(800) 542-7313

FLUID SAMPLE DATA

Company Trans Pacific Oil Corporation
Lease & Well No. Klitzke "A" No. 1-25
Date 9-27-06 Sec. 25 Twp. 16 S Range 27 W
Formation Test No. 2 Interval Tested From 4,213 ft. to 4,244 ft. Total Depth 4,250 ft.
Formation Kansas City 200'

	<u>MUD PIT</u>	<u>RECOVERY</u>
Viscosity	<u>49</u> CP	<u>65</u> CP
Weight	<u>9.2</u>	<u>9.2</u>
Water Loss	<u>10.8</u> CC	<u>10.4</u> CC
PH Factor	<u>10.5</u>	<u>10.5</u>

	<u>RESISTIVITY</u>	<u>CHLORIDE CONTENT</u>
Recovery Water	<u>-- @ --</u> °F.	<u>--</u> ppm
Recovery Mud	<u>1.60 @ 54</u> °F.	<u>4,900</u> ppm
Recovery Mud Filtrate	<u>1.65 @ 58</u> °F.	<u>4,400</u> ppm
Mud Pit Sample	<u>1.30 @ 68</u> °F.	<u>4,200</u> ppm
Mud Pit Sample Filtrate	<u>1.50 @ 70</u> °F.	<u>3,900</u> ppm

Sample Taken By ROGER D. FRIEDLY

Witness By W. BRYCE BIDLEMAN

Remarks Pit filtrate triton dish chlorides were 2,400 Ppm
Recovery filtrate triton dish chlorides were 2,800 Ppm

GENERAL INFORMATION

Client Information:

Company: TRANS PACIFIC OIL CORPORATION

Contact: ALAN BANTA

Phone: Fax: e-mail:

Site Information:

Contact: BRYCE BIDLEMAN

Phone: Fax: e-mail:

Well Information:

Name: KLITZKE 'A' #1-25

Operator: TRANS PACIFIC OIL CORPORATION

Location-Downhole: DST #2 KC 200' 4,213' - 4,255' TD 4,250'

Location-Surface: SEC 25-16S-27W LANE COUNTY

Test Information:

Company: DIAMOND TESTING

Representative: ROGER D. FRIEDLY

Supervisor: BRYCE BIDLEMAN

Test Type: STRADDLE TEST Job Number:

Test Unit: NO.1

Start Date: 2006/09/26 Start Time: 22:51:00

End Date: 2006/09/27 End Time: 04:47:00

Report Date: Prepared By:

Remarks: Qualified By:

RECOVERED: 40' DRILLING MUD

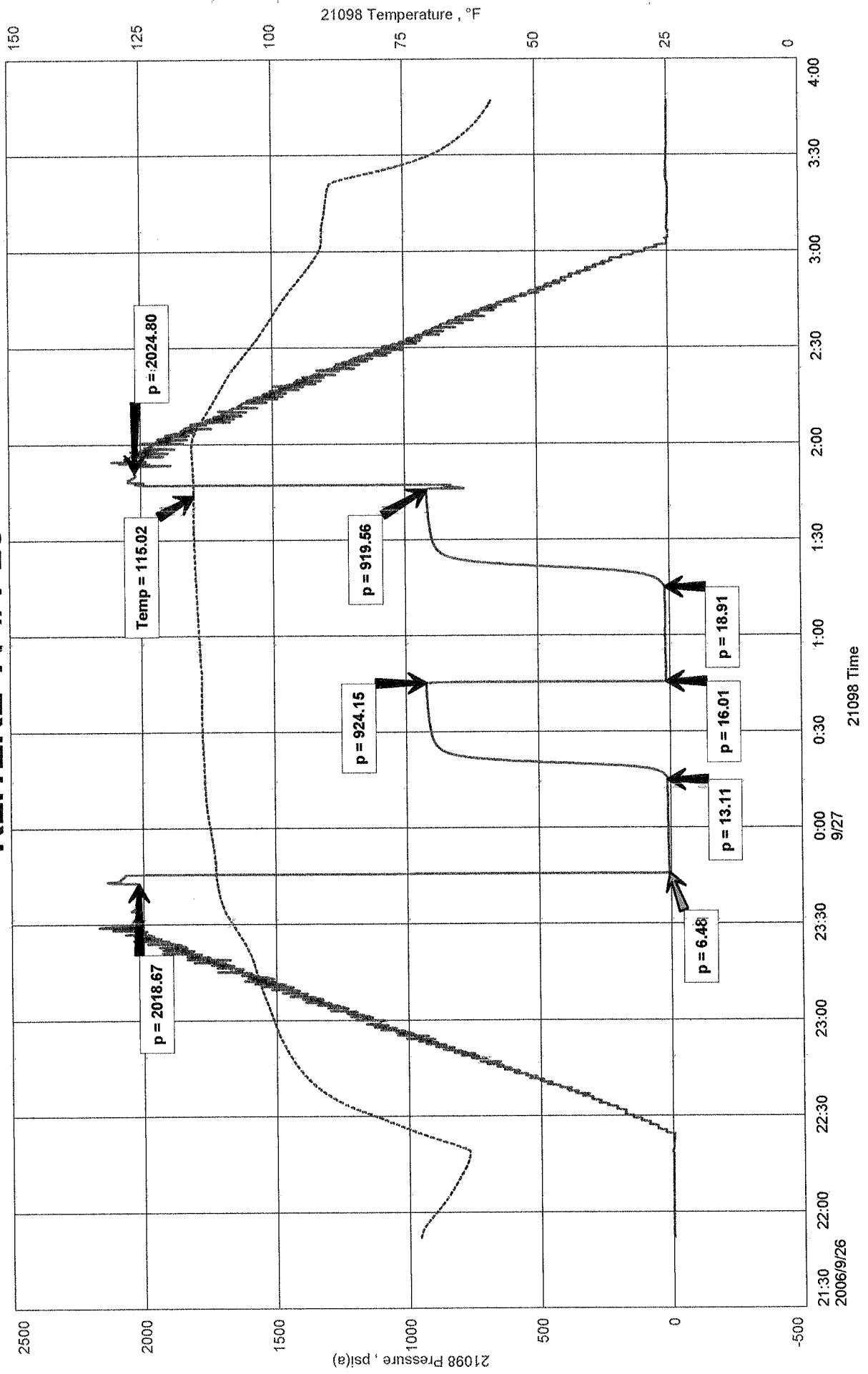
TOOL SAMPLE: 100% DRILLING MUD WITH A FEW OIL SPECKS

BELOW STRADDLE RECORDER: 1,133 PSI @ END

TRANS PACIFIC OIL CORPORATION
 DST #2 KC 200' 4,213' - 4,255' TD 4,250'
 Start Test Date: 2006/09/26
 Final Test Date: 2006/09/27

KLITZKE 'A' #1-25
 Formation: DST #2 KC 200' 4,213' - 4,244' TD 4,250'
 Pool: WILDCAT

KLITZKE 'A' #1-25



DST #2 Below straddle

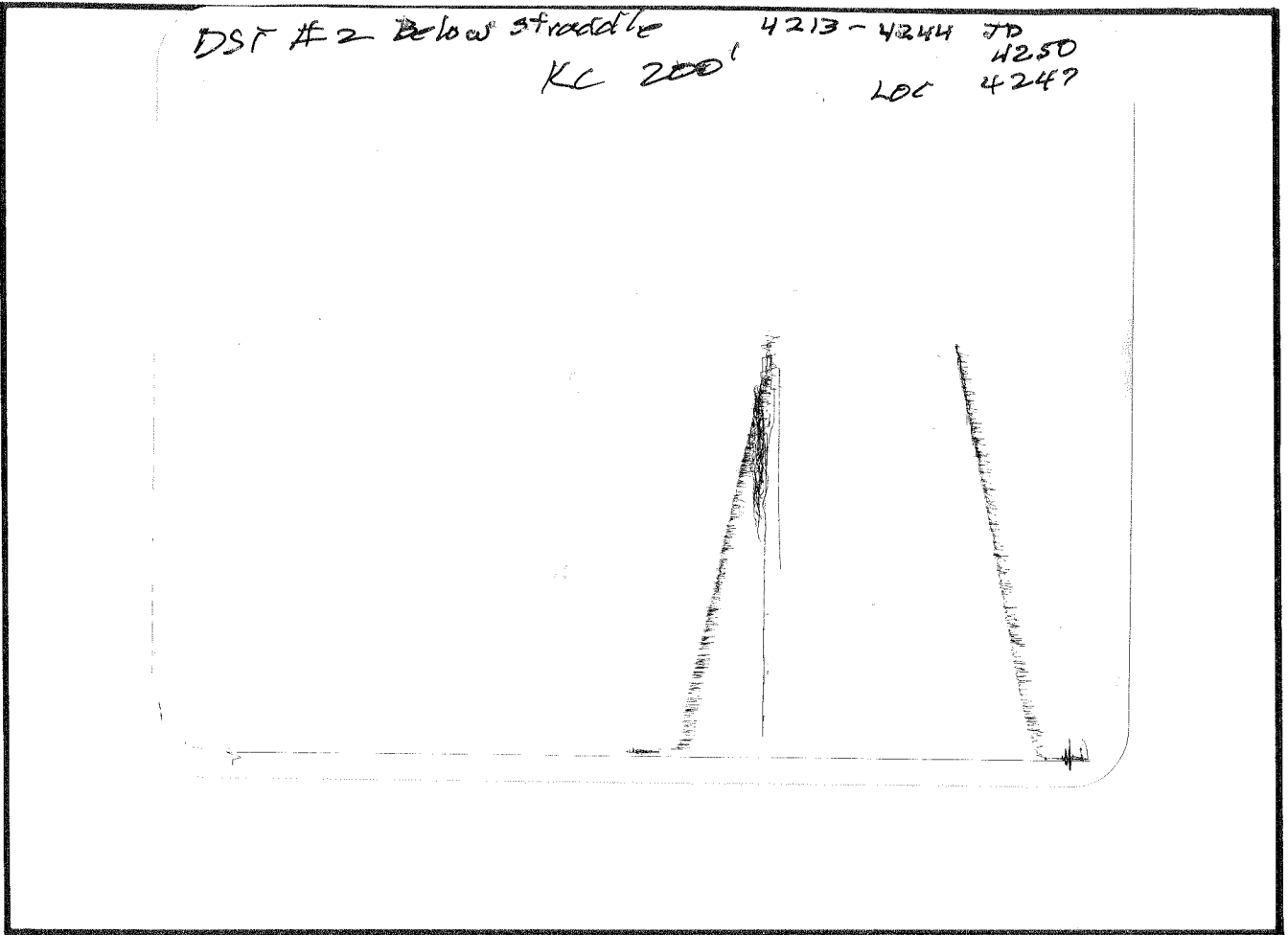
4213-4244

7D

KC 200'

4250

LOC 4249



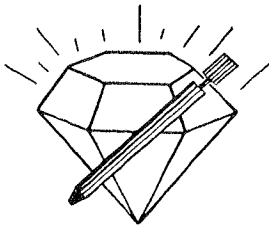
This is an actual photograph of recorder chart.

POINT	PRESSURE		Elec. Office Reading	PSI
	Field Reading			
(A) Initial Hydrostatic Mud	2019	2019		PSI
(B) First Initial Flow Pressure.....	6	6		PSI
(C) First Final Flow Pressure	13	13		PSI
(D) Initial Closed-in Pressure	924	924		PSI
(E) Second Initial Flow Pressure.....	16	16		PSI
(F) Second Final Flow Pressure.....	19	19		PSI
(G) Final Closed-in Pressure.....	920	920		PSI
(H) Final Hydrostatic Mud.....	2025	2025		PSI

KANSAS CORPORATION COMMISSION

FEB 26 2007

CONSERVATION DIV-LIC SECTION



DIAMOND TESTING

P.O. Box 157
HOISINGTON, KANSAS 67544
(620) 653-7550 • (800) 542-7313
STC 21098.D312

Company Trans Pacific Oil Corporation Lease & Well No. Klitzke "A" No. 1-25
Elevation 2692KB Formation Kansas City 220' Effective Pay -- Ft. Ticket No. 2194
Date 9-27-06 Sec. 25 Twp. 16S Range 27W County Lane State Kansas
Test Approved By W. Bryce Bidleman Diamond Representative Roger D. Friedly

Formation Test No. 3 Interval Tested from 4,262 ft. to 4,290 ft. Total Depth 4,290 ft.
Packer Depth 4,257 ft. Size 6 3/4 in. Packer Depth -- ft. Size -- in.
Packer Depth 4,262 ft. Size 6 3/4 in. Packer Depth -- ft. Size -- in.
Depth of Selective Zone Set ft.

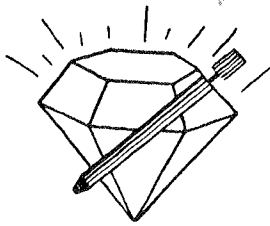
Top Recorder Depth (Inside) 4,250 ft. Recorder Number 21098 Cap. 5,000 psi
Bottom Recorder Depth (Outside) 4,287 ft. Recorder Number 13387 Cap. 4,000 psi
Below Straddle Recorder Depth ft. Recorder Number Cap. psi

Drilling Contractor Duke Drilling Co., Inc. - Rig 4 Drill Collar Length -- ft. I.D. -- in.
Mud Type Chemical Viscosity 50 Weight Pipe Length -- ft. I.D. -- in.
Weight 9.2 Water Loss 9.6 cc. Drill Pipe Length 4,237 ft. I.D. 3 1/2 in.
Chlorides (10.5 PH) 2,400 P.P.M. Test Tool Length 25 ft. Tool Size 3 1/2 - IF in.
Jars: Make Bowen Serial Number Not Run Anchor Length 28 ft. Size 4 1/2 - FH in.
Did Well Flow? No Reversed Out No Surface Choke Size 1 in. Bottom Choke Size 5/8 in.
Main Hole Size 7/8 in. Tool Joint Size 4 1/2 - XH in.

Blow: 1st Open: Weak, 1/8 in., blow increasing to 1 1/2 ins. No blow back during shut-in.
2nd Open: Weak surface blow in 52 mins. No blow back during shut-in.

Recovered 1 ft. of clean oil = .014200 bbls. Gravity: 36.6 @ 60°
Recovered 61 ft. of muddy water with oil specks = .866200 bbls. (Grind out: 32%-mud; 68%-water)
Recovered 62 ft. of TOTAL FLUID = .880400 bbls.
Recovered ft. of
Recovered ft. of
Remarks Tool Sample Grind Out: 100%-water with good oil spots

Time Set Packer(s) 3:37 ~~XXX~~ P.M. Time Started Off Bottom 7:52 ~~XXX~~ P.M. Maximum Temperature 119°
Initial Hydrostatic Pressure (A) 2051 P.S.I.
Initial Flow Period Minutes 30 (B) 3 P.S.I. to (C) 16 P.S.I.
Initial Closed In Period Minutes 75 (D) 1047 P.S.I.
Final Flow Period Minutes 60 (E) 18 P.S.I. to (F) 36 P.S.I.
Final Closed In Period Minutes 90 (G) 1025 P.S.I.
Final Hydrostatic Pressure (H) 2046 P.S.I.



DIAMOND TESTING
P. O. Box 157
HOISINGTON, KANSAS 67544
(800) 542-7313

FLUID SAMPLE DATA

Company Trans Pacific Oil Corporation
Lease & Well No. Klitzke "A" No. 1-25
Date 9-27-06 Sec. 25 Twp. 16 S Range 27 W
Formation Test No. 3 Interval Tested From 4,262 ft. to 4,290 ft. Total Depth 4,290 ft.
Formation Kansas City 220'

	<u>MUD PIT</u>	<u>RECOVERY</u>	<u>RECOVERY</u>
Viscosity	<u>50</u> CP	<u>--</u> CP	
Weight	<u>9.2</u>	<u>--</u>	
Water Loss	<u>9.6</u> CC	<u>--</u> CC	
PH Factor	<u>10.5</u>	<u>--</u>	<u>Water</u> <u>7.0</u>

	<u>RESISTIVITY</u>	<u>CHLORIDE</u> <u>CONTENT</u>
Recovery Water	<u>.20 @ 66 °F.</u>	<u>36,000 ppm</u>
Recovery Mud	<u>-- @ -- °F.</u>	<u>-- ppm</u>
Recovery Mud Filtrate	<u>-- @ -- °F.</u>	<u>-- ppm</u>
Mud Pit Sample	<u>1.20 @ 72 °F.</u>	<u>5,000 ppm</u>
Mud Pit Sample Filtrate	<u>1.45 @ 70 °F.</u>	<u>4,100 ppm</u>

Sample Taken By ROGER D. FRIEDLY

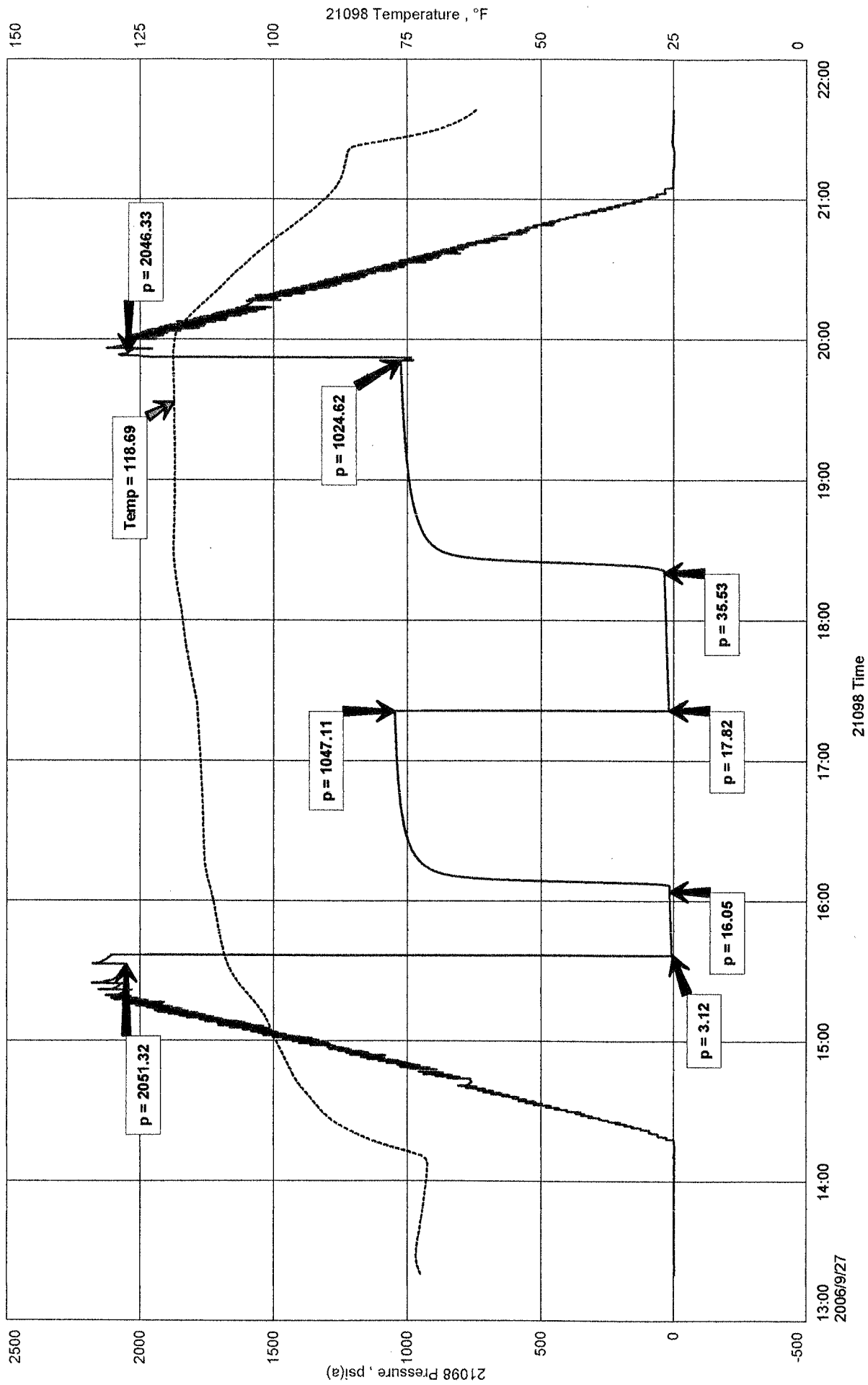
Witness By W. BRYCE BIDLEMAN

Remarks Pit filtrate triton dish chlorides were 2,400 Ppm
Recovery water dish chlorides were 25,500 Ppm

TRANS PACIFIC OIL CORPORATION
DST #3 KC 220' 4,262' - 4,290'
Start Test Date: 2006/09/27
Final Test Date: 2006/09/27

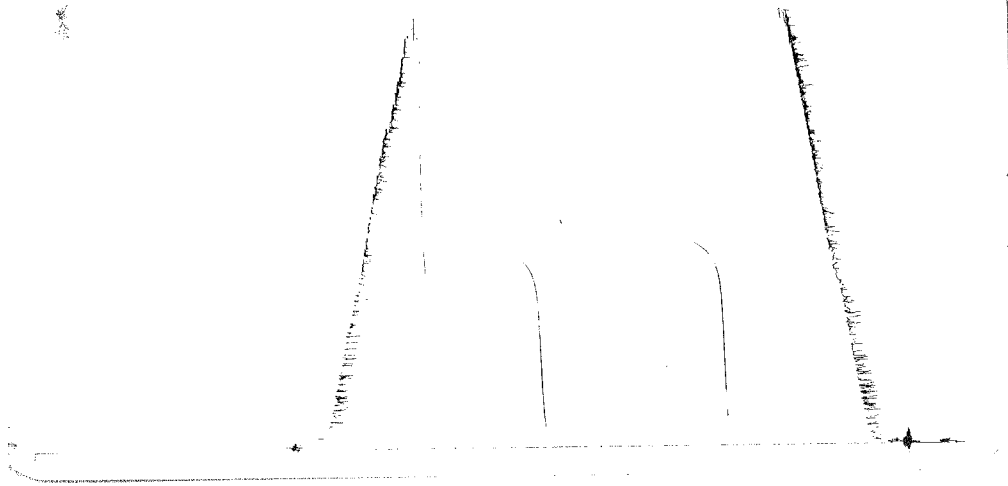
KITZKE 'A' #1-25
Formation: DST #3 KC 220' 4,262' - 4,290'
Pool: WILDCAT

KITZKE 'A' #1-25



DST #3 outside 13387
 16c 220

4262-4280
 LOL 4287



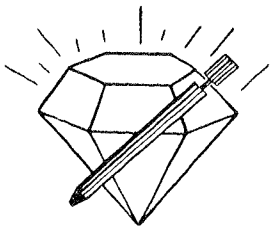
This is an actual photograph of recorder chart.

POINT	PRESSURE Elec.		
	Field Reading	Office Reading	
(A) Initial Hydrostatic Mud	2051	2051	PSI
(B) First Initial Flow Pressure.....	3	3	PSI
(C) First Final Flow Pressure	16	16	PSI
(D) Initial Closed-in Pressure	1047	1047	PSI
(E) Second Initial Flow Pressure	18	18	PSI
(F) Second Final Flow Pressure.....	36	36	PSI
(G) Final Closed-in Pressure.....	1025	1025	PSI
(H) Final Hydrostatic Mud.....	2046	2046	PSI

KANSAS CORPORATION COMMISSION

FEB 26 2007

CONSERVATION DIV-UIC SECTION



DIAMOND TESTING

P.O. Box 157
HOISINGTON, KANSAS 67544
(620) 653-7550 • (800) 542-7313
STC 21098.D313

Company Trans Pacific Oil Corporation Lease & Well No. Klitzke "A" No. 1-25
Elevation 2692KB Formation Pleasanton/Marmaton Effective Pay -- Ft. Ticket No. 2195
Date 9-28-06 Sec. 25 Twp. 16S Range 27W County Lane State Kansas

Test Approved By W. Bryce Bidleman Diamond Representative Roger D. Friedly

Formation Test No. 4 Interval Tested from 4,290 ft. to 4,340 ft. Total Depth 4,340 ft.
Packer Depth 4,285 ft. Size 6 3/4 in. Packer Depth -- ft. Size -- in.
Packer Depth 4,290 ft. Size 6 3/4 in. Packer Depth -- ft. Size -- in.
Depth of Selective Zone Set ft.

Top Recorder Depth (Inside) 4,278 ft. Recorder Number 21098 Cap. 5,000 psi
Bottom Recorder Depth (Outside) 4,337 ft. Recorder Number 13387 Cap. 4,000 psi
Below Straddle Recorder Depth ft. Recorder Number Cap. psi

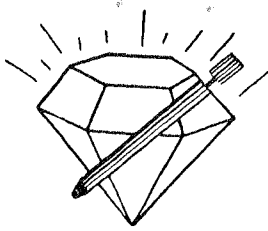
Drilling Contractor Duke Drilling Co., Inc. - Rig 4 Drill Collar Length -- ft. I.D. -- in.
Mud Type Chemical Viscosity 60 Weight Pipe Length -- ft. I.D. -- in.
Weight 9.5 Water Loss 10.0 cc. Drill Pipe Length 4,265 ft. I.D. 3 1/2 in.
Chlorides 2,500 P.P.M. Test Tool Length 25 ft. Tool Size 3 1/2 - IF in.
Jars: Make Bowen Serial Number Not Run Anchor Length 50 ft. Size 4 1/2 - FH in.
Did Well Flow? No Reversed Out No Surface Choke Size 1 in. Bottom Choke Size 5/8 in.
Main Hole Size 7 7/8 in. Tool Joint Size 4 1/2 - XH in.

Blow: 1st Open: Weak, 1/8 in., blow decreasing in 27 mins. to a weak surface blow at end. No blow back during shut-in.
2nd Open: Weak, 1/4 in., blow decreasing to 1/8 in., blow throughout. No blow back during shut-in.

Recovered 15 ft. of slightly oil specked drilling mud = .213000 bbls.
Recovered ft. of
Recovered ft. of
Recovered ft. of
Recovered ft. of

Remarks Tool Sample Grind Out: 100%-drilling mud with a good show of oil

Time Set Packer(s) 10:51 ~~P.M.~~ ^{A.M.} Time Started Off Bottom 12:51 ~~P.M.~~ ^{A.M.} Maximum Temperature 113°
Initial Hydrostatic Pressure 2108 (A) P.S.I.
Initial Flow Period 30 Minutes (B) 7 P.S.I. to (C) 14 P.S.I.
Initial Closed In Period 30 Minutes (D) 75 P.S.I.
Final Flow Period 30 Minutes (E) 7 P.S.I. to (F) 11 P.S.I.
Final Closed In Period 30 Minutes (G) 43 P.S.I.
Final Hydrostatic Pressure 2100 (H) P.S.I.



DIAMOND TESTING
P. O. Box 157
HOISINGTON, KANSAS 67544
(800) 542-7313

FLUID SAMPLE DATA

Company Trans Pacific Oil Corporation
Lease & Well No. Klitzke "A" No. 1-25
Date 9-28-06 Sec. 25 Twp. 16 S Range 27 W
Formation Test No. 4 Interval Tested From 4,290 ft. to 4,340 ft. Total Depth 4,340 ft.
Formation Pleasanton/Marmaton

	<u>MUD PIT</u>	<u>RECOVERY</u>
Viscosity	<u>60</u> CP	<u>68</u> CP
Weight	<u>9.5</u>	<u>9.45</u>
Water Loss	<u>10.0</u> CC	<u>9.6</u> CC
PH Factor	<u>10.5</u>	<u>10.0</u>

	RESISTIVITY	CHLORIDE CONTENT
Recovery Water	-- @ -- °F.	-- ppm
Recovery Mud	<u>1.10</u> @ <u>78</u> °F.	<u>4,900</u> ppm
Recovery Mud Filtrate	<u>1.30</u> @ <u>86</u> °F.	<u>3,800</u> ppm
Mud Pit Sample	<u>1.40</u> @ <u>60</u> °F.	<u>5,100</u> ppm
Mud Pit Sample Filtrate	<u>1.45</u> @ <u>66</u> °F.	<u>4,400</u> ppm

Sample Taken By ROGER D. FRIEDLY

Witness By W. BRYCE BIDLEMAN

Remarks Pit filtrate triton dish chlorides were 2,500 Ppm
Recovery filtrate triton dish chlorides were 2,600 Ppm

GENERAL INFORMATION

Client Information:

Company: TRANS PACIFIC OIL CORPORATION

Contact: ALAN BANTA

Phone: Fax: e-mail:

Site Information:

Contact: BRYCE BIDLEMAN

Phone: Fax: e-mail:

Well Information:

Name: KLITZKE 'A' # 1-25

Operator: TRANS PACIFIC OIL CORPORATION

Location-Downhole: DST #4 PLEAS. / MARM. 4,290' - 4,340'

Location-Surface: SEC 25'16S-27W LANE COUNTY

Test Information:

Company: DIAMONOND TESTING

Representative: ROGER D. FRIEDLY

Supervisor: BRYCE BIDLEMAN

Test Type: CONVENTIONAL Job Number:

Test Unit: NO. 1

Start Date: 2006/09/28 Start Time: 08:39:00

End Date: 2006/09/28 End Time: 14:50:00

Report Date: Prepared By:

Remarks: Qualified By:

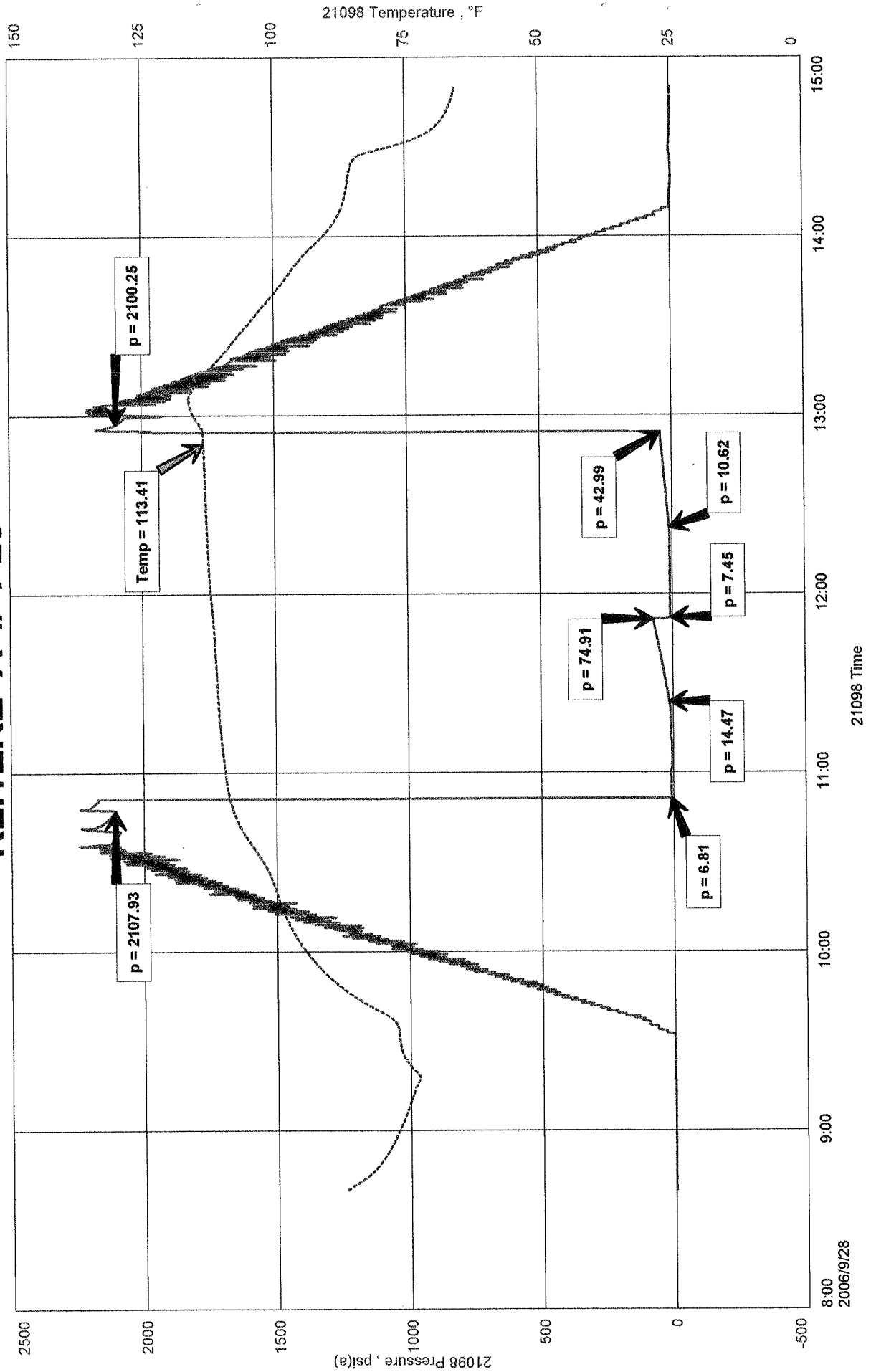
RECOVERED: 15' SLIGHTLY OIL SPECKED DRILLING MUD

TOOL SAMPLE: 100% DRILLING MUD WITH A GOOD SHOW OF FREE OIL

TRANS PACIFIC OIL CORPORATION
 DST #4 PLEAS. / MARM. 4,290' - 4,340'
 Start Test Date: 2006/09/28
 Final Test Date: 2006/09/28

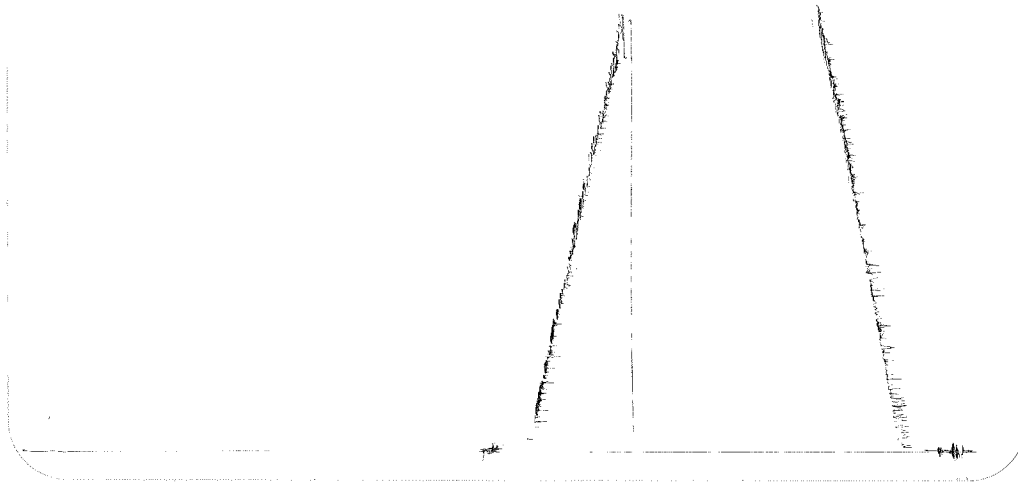
KLITZKE 'A' # 1-25
 Formation: DST #4 PLEAS. / MARM. 4,290' - 4,340'
 Pool: WILDCAT

KLITZKE 'A' # 1-25



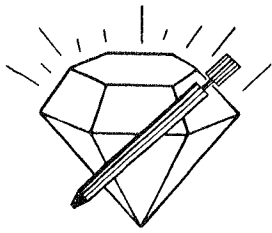
DST # 4 Outside 63387
 p100s/17acm

4290 - 4300
 LOC 4337



This is an actual photograph of recorder chart.

POINT	PRESSURE		E1ec. Office Reading	PSI
	Field Reading			
(A) Initial Hydrostatic Mud	2108	2108		PSI
(B) First Initial Flow Pressure.....	7	7		PSI
(C) First Final Flow Pressure	14	14		PSI
(D) Initial Closed-in Pressure	75	75		PSI
(E) Second Initial Flow Pressure	7	7		PSI
(F) Second Final Flow Pressure.....	11	11		PSI
(G) Final Closed-in Pressure.....	43	43		PSI
(H) Final Hydrostatic Mud.....	2100	2100		PSI



DIAMOND TESTING

P.O. Box 157
HOISINGTON, KANSAS 67544
(620) 653-7550 • (800) 542-7313
STC 21098. D314

Company Trans Pacific Oil Corporation Lease & Well No. Klitzke "A" No. 1-25
Elevation 2692KB Formation Fort Scott Effective Pay -- Ft. Ticket No. 2196
Date 9-29-06 Sec. 25 Twp. 16S Range 27W County Lane State Kansas
Test Approved By W. Bryce Bidleman Diamond Representative Roger D. Friedly

Formation Test No. 5 Interval Tested from 4,480 ft. to 4,515 ft. Total Depth 4,515 ft.
Packer Depth 4,475 ft. Size 6 3/4 in. Packer Depth -- ft. Size -- in.
Packer Depth 4,480 ft. Size 6 3/4 in. Packer Depth -- ft. Size -- in.
Depth of Selective Zone Set -- ft.

Top Recorder Depth (Inside) 4,468 ft. Recorder Number 21098 Cap. 5,000 psi
Bottom Recorder Depth (Outside) 4,512 ft. Recorder Number 13387 Cap. 4,000 psi
Below Straddle Recorder Depth -- ft. Recorder Number -- Cap. -- psi

Drilling Contractor Duke Drilling Co., Inc. - Rig 4 Drill Collar Length -- ft. I.D. -- in.
Mud Type Chemical Viscosity 55 Weight Pipe Length -- ft. I.D. -- in.
Weight 9.4 Water Loss 10.8 cc. Drill Pipe Length 4,455 ft. I.D. 3 1/2 in.
Chlorides 3,000 P.P.M. Test Tool Length 25 ft. Tool Size 3 1/2 - IF in.
Jars: Make Bowen Serial Number Not Run Anchor Length 35 ft. Size 4 1/2 - FH in.
Did Well Flow? No Reversed Out No Surface Choke Size 1 in. Bottom Choke Size 5/8 in.
Main Hole Size 7 7/8 in. Tool Joint Size 4 1/2 - XH in.

Blow: 1st Open: Weak, 1/2 in., blow decreasing in 17 mins. Died in 24 mins. No blow back during shut-in.
2nd Open: No blow. No blow back during shut-in.

Recovered 10 ft. of slightly oil cut mud = .142000 bbls. (Grind out: 1%-oil; 99%-mud)

Recovered -- ft. of --

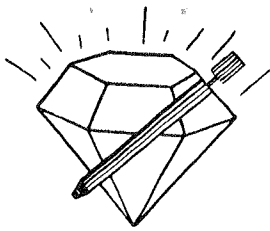
Recovered -- ft. of --

Recovered -- ft. of --

Recovered -- ft. of --

Remarks Tool Sample Grind Out: Good free oil on top of 100%-drilling mud

Time Set Packer(s) 11:25 ~~XXX~~ A.M. Time Started Off Bottom 1:25 ~~XXX~~ P.M. Maximum Temperature 119°
Initial Hydrostatic Pressure (A) 2165 P.S.I.
Initial Flow Period Minutes 30 (B) 3 P.S.I. to (C) 16 P.S.I.
Initial Closed In Period Minutes 30 (D) 704 P.S.I.
Final Flow Period Minutes 30 (E) 12 P.S.I. to (F) 16 P.S.I.
Final Closed In Period Minutes 30 (G) 273 P.S.I.
Final Hydrostatic Pressure (H) 2163 P.S.I.



DIAMOND TESTING
P. O. Box 157
HOISINGTON, KANSAS 67544
(800) 542-7313

FLUID SAMPLE DATA

Company Trans Pacific Oil Corporation
Lease & Well No. Klitzke "A" No. 1-25
Date 9-29-06 Sec. 25 Twp. 16 S Range 27 W
Formation Test No. 5 Interval Tested From 4,480 ft. to 4,515 ft. Total Depth 4,515 ft.
Formation Fort Scott

	<u>MUD PIT</u>	<u>RECOVERY</u>
Viscosity	<u>55</u> CP	<u>60</u> CP
Weight	<u>9.4</u>	<u>9.5</u>
Water Loss	<u>10.8</u> CC	<u>10.8</u> CC
PH Factor	<u>10.5</u>	<u>10.0</u>

	<u>RESISTIVITY</u>	<u>CHLORIDE CONTENT</u>
Recovery Water	<u>-- @ -- °F.</u>	<u>-- ppm</u>
Recovery Mud	<u>1.00 @ 92 °F.</u>	<u>4,900 ppm</u>
Recovery Mud Filtrate	<u>1.20 @ 94 °F.</u>	<u>3,900 ppm</u>
Mud Pit Sample	<u>.90 @ 90 °F.</u>	<u>5,200 ppm</u>
Mud Pit Sample Filtrate	<u>1.10 @ 92 °F.</u>	<u>4,100 ppm</u>

Sample Taken By ROGER D. FRIEDLY

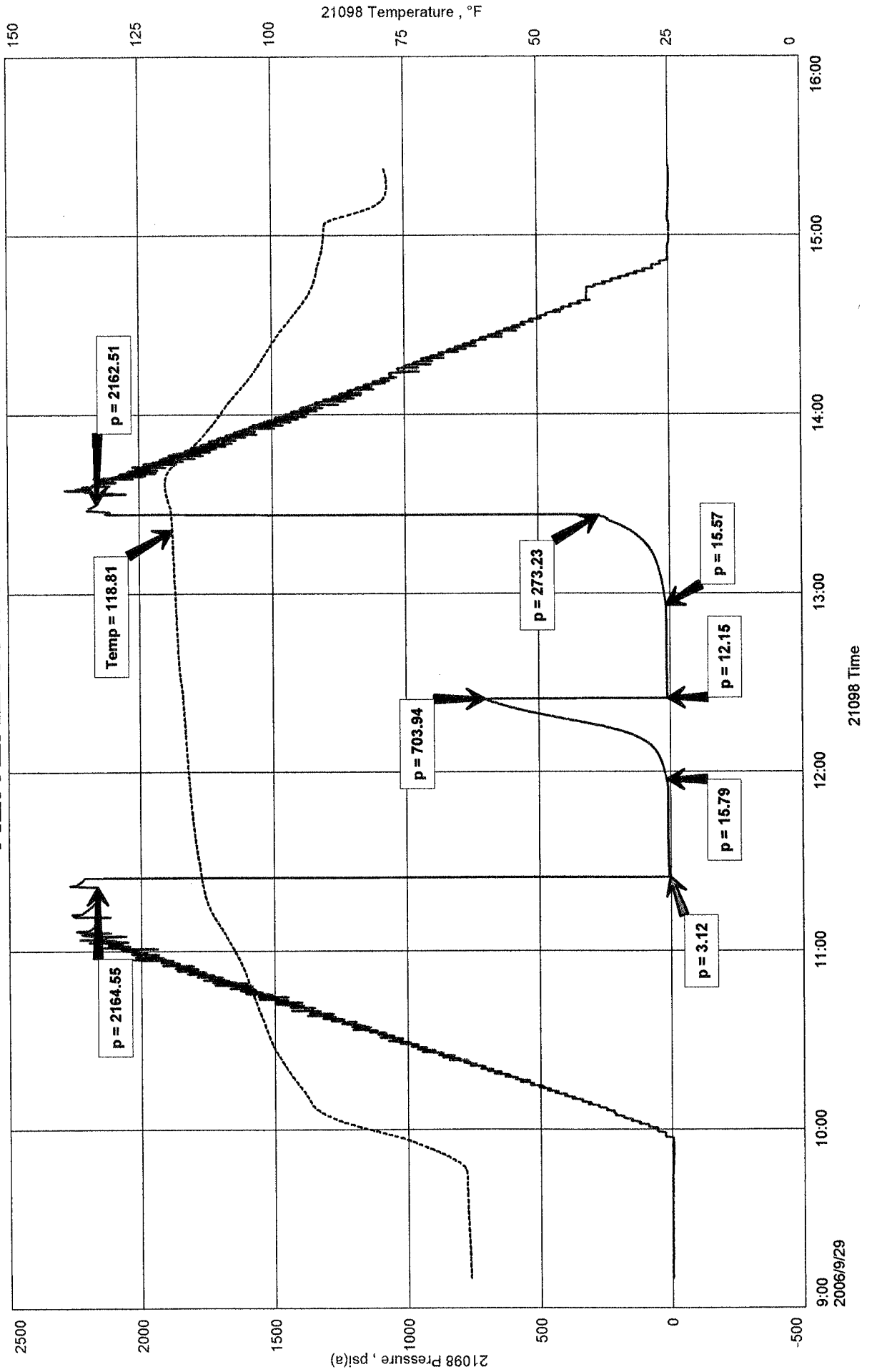
Witness By W. BRYCE BIDLEMAN

Remarks Pit filtrate triton dish chlorides were 3,000 Ppm
Recovery filtrate triton dish chlorides were 3,100 Ppm

TRANS PACIFIC OIL CORPORATION
DST #5 FT. SCOTT 4,480' - 4,515'
Start Test Date: 2006/09/29
Final Test Date: 2006/09/29

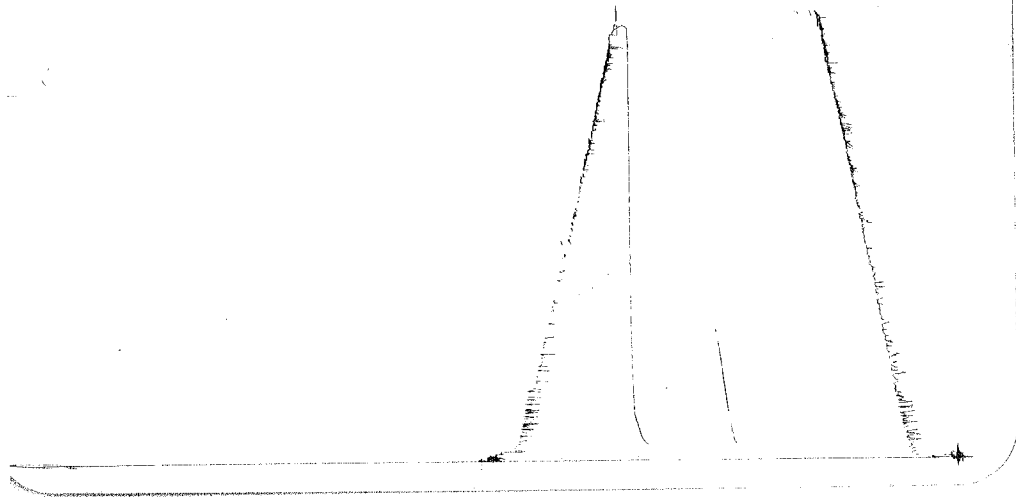
KLITZKE 'A' #1-25
Formation: DST #5 FT. SCOTT 4,480' - 4,515'
Pool: WILDCAT

KLITZKE 'A' #1-25



DST # 8 OUTSIDE 13387
 FT Scott

4480-4512
 LOC 4512



This is an actual photograph of recorder chart.

POINT	PRESSURE Elec.		
	Field Reading	Office Reading	
(A) Initial Hydrostatic Mud	2165	2165	PSI
(B) First Initial Flow Pressure.....	3	3	PSI
(C) First Final Flow Pressure	16	16	PSI
(D) Initial Closed-in Pressure	704	704	PSI
(E) Second Initial Flow Pressure	12	12	PSI
(F) Second Final Flow Pressure.....	16	16	PSI
(G) Final Closed-in Pressure.....	273	273	PSI
(H) Final Hydrostatic Mud	2163	2163	PSI

KANSAS CORPORATION COMMISSION

FEB 26 2007

CONSERVATION DIV-UIC SECTION