

TRILOBITE TESTING, L.L.C.

P.O. Box 362 • Hays, Kansas 67601

Drill-Stem Test Data

Well Name BENTLEY #1 Test No. 1 Date 3/15/95
Company A.L. ABERCROMBIE INC. Zone KC 140-160-180
Address 150 N MAIN #801 WICHITA KS 67202 Elevation 2626
Co. Rep./Geo. SCOTT OATSDEAN Cont. ABERCROMBIE #8 Est. Ft. of Pay _____
Location: Sec. 7 Twp. 16S Rge. 27W Co. LANE State KS

Interval Tested 4050-4140 Drill Pipe Size 4.5" XH
Anchor Length 90 Wt. Pipe I.D. - 2.7 Ft. Run _____
Top Packer Depth 4045 Drill Collar - 2.25 Ft. Run _____
Bottom Packer Depth 4050 Mud Wt. 9.1 lb/Gal.
Total Depth 4140 Viscosity 47 Filtrate 10.4

Tool Open @ 2:55 Initial Blow FROM SURFACE TO 6" FAIR BLOW

Final Blow NO BLOW @ OPEN - BEGAN WEAK SURFACE BLOW IN 4 MINUTES
STEADY WEAK BLOW THROUGHOUT

Recovery - Total Feet 240 Flush Tool? NO

Rec. 120 Feet of DRILLING MUD
Rec. 120 Feet of WATER CUT MUD 15%WATER/85%MUD
Rec. _____ Feet of _____
Rec. _____ Feet of _____
Rec. _____ Feet of _____

BHT 118 °F Gravity _____ °API @ _____ °F Corrected Gravity _____ °API
RW 0.6 @ 65 °F Chlorides 12000 ppm Recovery Chlorides 3000 ppm System

(A) Initial Hydrostatic Mud 1985.40 PSI AK1 Recorder No. 11086 Range 4350

(B) First Initial Flow Pressure 147.80 PSI @ (depth) 4052 w / Clock No. 25828

(C) First Final Flow Pressure 147.80 PSI AK1 Recorder No. 10332 Range 4050

(D) Initial Shut-in Pressure 1332.70 PSI @ (depth) 4137 w / Clock No. 25114

(E) Second Initial Flow Pressure 163.00 PSI AK1 Recorder No. _____ Range _____

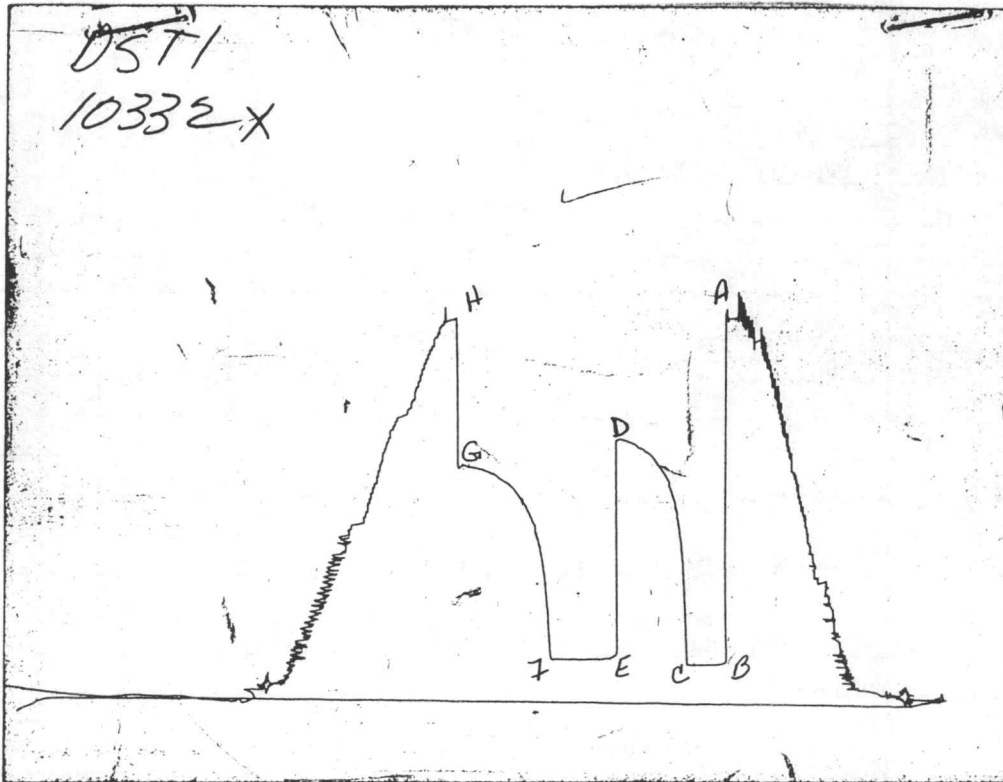
(F) Second Final Flow Pressure 163.00 PSI @ (depth) _____ w / Clock No. _____

(G) Final Shut-in Pressure 1185.50 PSI Initial Opening 30 Final Flow 45

(H) Final Hydrostatic Mud 1958.00 PSI Initial Shut-in 45 Final Shut-in 60

Our Representative GARY SPEER

CHART PAGE



This is an actual photograph of an AK1 recorder chart

	FIELD READING	OFFICE READING
(A) INITIAL HYDROSTATIC MUD	2048	1985.40
(B) FIRST INITIAL FLOW PRESSURE	222	147.80
(C) FIRST FINAL FLOW PRESSURE	226	147.80
(D) INITIAL CLOSED-IN PRESSURE	1387	1332.70
(E) SECOND INITIAL FLOW PRESSURE	232	163.00
(F) SECOND FINAL FLOW PRESSURE	232	163.00
(G) FINAL CLOSED-IN PRESSURE	1245	1185.50
(H) FINAL HYDROSTATIC MUD	2028	1958.00

TRILOBITE TESTING, L.L.C.

P.O. Box 362 • Hays, Kansas 67601

Drill-Stem Test Data

Well Name BENTLEY #1 Test No. 2 Date 3/15/95
Company A.L. ABERCROMBIE INC. Zone KC 200
Address 150 N MAIN #801 WICHITA KS 67202 Elevation 2626
Co. Rep./Geo. SCOTT OATSDEAN Cont. ABERCROMBIE #8 Est. Ft. of Pay _____
Location: Sec. 7 Twp. 16S Rge. 27W Co. LANE State KS

Interval Tested 4140-4070 Drill Pipe Size 4.5" XH
Anchor Length 30 Wt. Pipe I.D. - 2.7 Ft. Run 505
Top Packer Depth 4135 Drill Collar - 2.25 Ft. Run _____
Bottom Packer Depth 4140 Mud Wt. 9.2 lb/Gal.
Total Depth 4170 Viscosity 54 Filtrate 10.4

Tool Open @ 4:15 Initial Blow VERY WEAK SURFACE BLOW - DIED IN 16 MINUTES

Final Blow NO BLOW

Recovery - Total Feet 50 Flush Tool? NO

Rec. 50 Feet of WATER CUT MUD 5%WATER/95%MUD
Rec. _____ Feet of _____
Rec. _____ Feet of _____
Rec. _____ Feet of _____
Rec. _____ Feet of _____

BHT 117 °F Gravity _____ °API @ _____ °F Corrected Gravity _____ °API
RW 0.4 @ 70 °F Chlorides 15000 ppm Recovery Chlorides 3500 ppm System

(A) Initial Hydrostatic Mud 2022.90 PSI AK1 Recorder No. 11086 Range 4350

(B) First Initial Flow Pressure 54.70 PSI @ (depth) 4052 w / Clock No. 25828

(C) First Final Flow Pressure 58.70 PSI AK1 Recorder No. 10332 Range 4050

(D) Initial Shut-in Pressure 679.90 PSI @ (depth) 4167 w / Clock No. 25114

(E) Second Initial Flow Pressure 49.60 PSI AK1 Recorder No. _____ Range _____

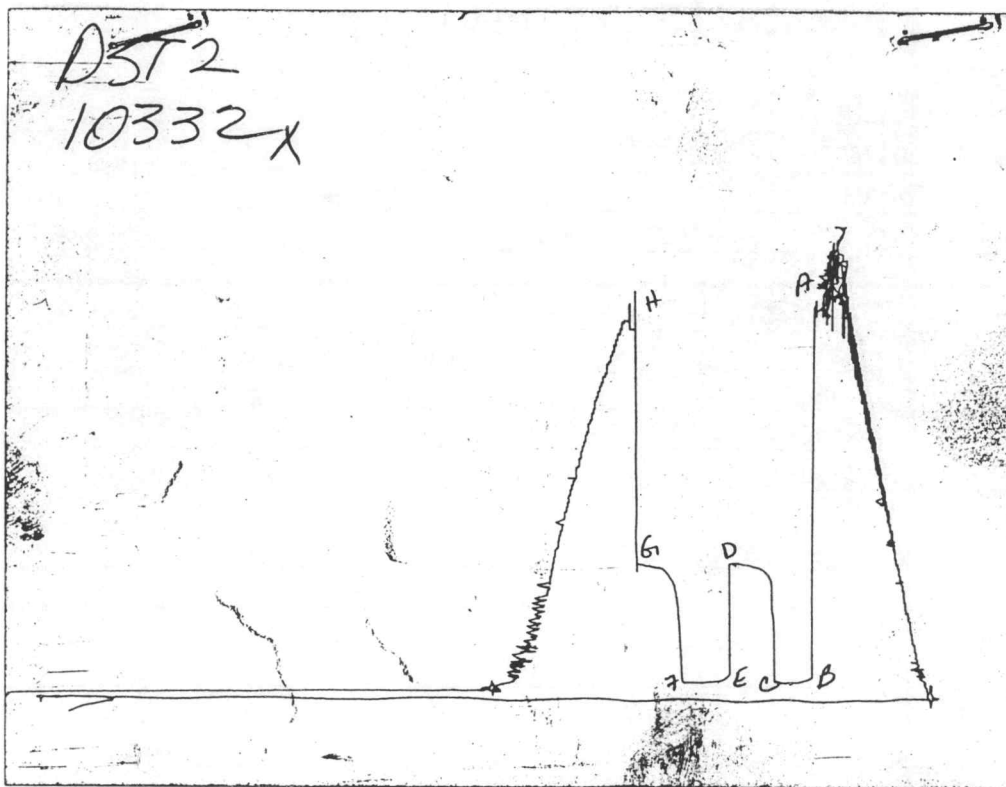
(F) Second Final Flow Pressure 49.60 PSI @ (depth) _____ w / Clock No. _____

(G) Final Shut-in Pressure 665.60 PSI Initial Opening 30 Final Flow 30

(H) Final Hydrostatic Mud 1899.00 PSI Initial Shut-in 30 Final Shut-in 30

Our Representative GARY SPEER

CHART PAGE



This is an actual photograph of an AK1 recorder chart

	FIELD READING	OFFICE READING
(A) INITIAL HYDROSTATIC MUD	2078	2022.90
(B) FIRST INITIAL FLOW PRESSURE	101	54.70
(C) FIRST FINAL FLOW PRESSURE	113	58.70
(D) INITIAL CLOSED-IN PRESSURE	729	679.90
(E) SECOND INITIAL FLOW PRESSURE	113	49.60
(F) SECOND FINAL FLOW PRESSURE	113	49.60
(G) FINAL CLOSED-IN PRESSURE	709	665.60
(H) FINAL HYDROSTATIC MUD	2028	1899.00

TRILOBITE TESTING, L.L.C.

P.O. Box 362 • Hays, Kansas 67601

Drill-Stem Test Data

Well Name BENTLEY #1 Test No. 3 Date 3/17/95
Company A.L. ABERCROMBIE INC. Zone MYRIC / FT SCOT
Address 150 N MAIN #801 WICHITA KS 67202 Elevation 2626
Co. Rep./Geo. SCOTT OATSDEAN Cont. ABERCROMBIE #8 Est. Ft. of Pay _____
Location: Sec. 7 Twp. 16S Rge. 27W Co. LANE State KS

Interval Tested 4330-4420 Drill Pipe Size 4.5" XH
Anchor Length 90 Wt. Pipe I.D. - 2.7 Ft. Run 505
Top Packer Depth 4325 Drill Collar - 2.25 Ft. Run _____
Bottom Packer Depth 4330 Mud Wt. 9.3 lb/Gal.
Total Depth 4420 Viscosity 45 Filtrate 12.8

Tool Open @ 5:55PM Initial Blow 1/2" WEAK BLOW THROUGHOUT

Final Blow NO BLOW

Recovery - Total Feet 30 Flush Tool? NO

Rec. 30 Feet of SLIGHTLY OIL CUT MUD 2%OIL/98%MUD
Rec. _____ Feet of _____
Rec. _____ Feet of _____
Rec. _____ Feet of _____
Rec. _____ Feet of _____

BHT 116 °F Gravity _____ °API @ _____ °F Corrected Gravity _____ °API
RW _____ @ _____ °F Chlorides _____ ppm Recovery Chlorides 4500 ppm System

(A) Initial Hydrostatic Mud 2137.00 PSI AK1 Recorder No. 11086 Range 4350

(B) First Initial Flow Pressure 119.40 PSI @ (depth) 4417 w / Clock No. 25828

(C) First Final Flow Pressure 124.50 PSI AK1 Recorder No. 10332 Range 4050

(D) Initial Shut-in Pressure 771.30 PSI @ (depth) 4412 w / Clock No. 25114

(E) Second Initial Flow Pressure 121.50 PSI AK1 Recorder No. _____ Range _____

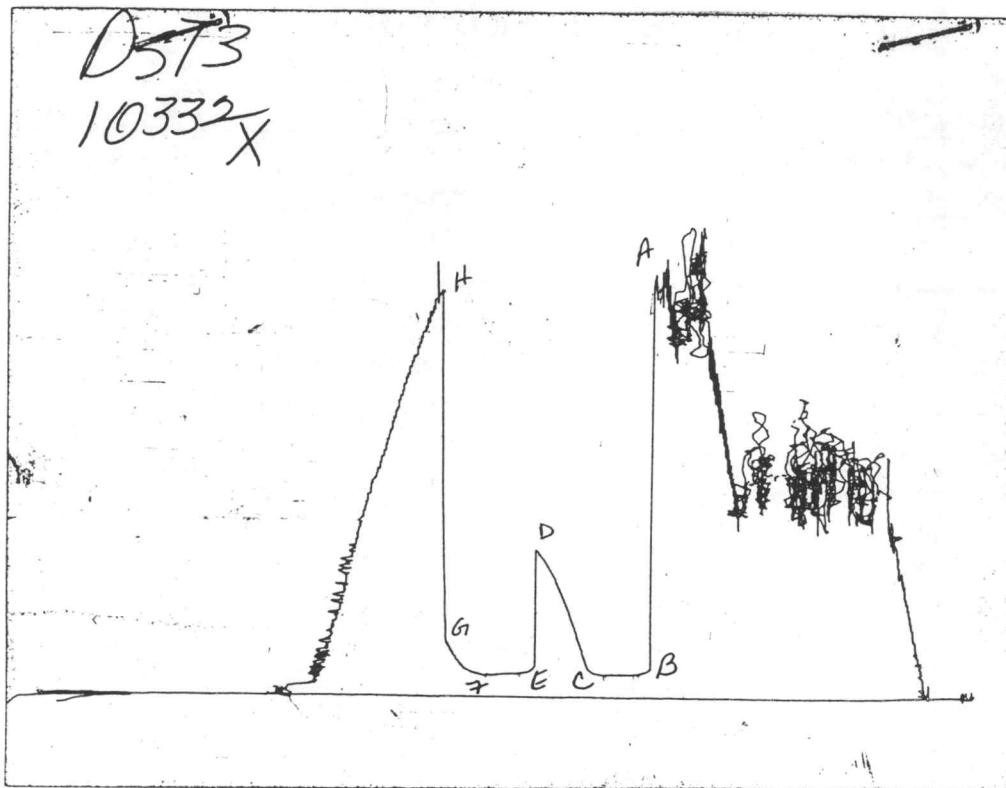
(F) Second Final Flow Pressure 121.50 PSI @ (depth) _____ w / Clock No. _____

(G) Final Shut-in Pressure 298.60 PSI Initial Opening 30 Final Flow 30

(H) Final Hydrostatic Mud 2121.00 PSI Initial Shut-in 45 Final Shut-in 30

Our Representative GARY SPEER

CHART PAGE



This is an actual photograph of an AK1 recorder chart

	FIELD READING	OFFICE READING
(A) INITIAL HYDROSTATIC MUD	2148	2137.00
(B) FIRST INITIAL FLOW PRESSURE	111	119.40
(C) FIRST FINAL FLOW PRESSURE	121	124.50
(D) INITIAL CLOSED-IN PRESSURE	760	771.30
(E) SECOND INITIAL FLOW PRESSURE	121	121.50
(F) SECOND FINAL FLOW PRESSURE	121	121.50
(G) FINAL CLOSED-IN PRESSURE	283	298.60
(H) FINAL HYDROSTATIC MUD	2148	2121.00