

Robert C. Lewellyn

Consulting Petroleum Geologist

P. O. Box 609
Kechi, KS 67067-0609
Office 316-744-2567
Cell 316-518-0495
Fax 209-396-2988
boblewellyn@yahoo.com

32-16S-29W
C W2 SW

15-101-21951

GEOLOGICAL REPORT

Larson Operating Company
No 1-32 Jennison
1210' FSL & 500' FWL Sec. 32-16S-29W
Lane County, Kansas

KCC
JAN 05 2007
CONFIDENTIAL

CONTRACTOR: Southwind Drilling Company Rig #1
SPUDDED: September 12, 2006
DRILLING COMPLETED: September 24, 2006
SURFACE CASING: 8 5/8" @ 273 KBM
ELECTRIC LOGS: Log Tech DIL CDN MEL BHCS
ELEVATIONS: 2831 KB 2821 GL

FORMATION TOPS: (Electric Log)

Anyhdrite 2240 (+ 591)
Base Anhydrite 2266 (+ 565)
Heebner Shale 3924 (-1093)
Lansing-Kansas City Group 3960 (-1129)
Muncie Creek Shale 4122 (-1291)
Stark Shale 4218 (-1387)
Hushpuckney Shale 4251 (-1420)
Base Kansas City 4301 (-1470)
Marmaton 4336 (-1505)
Altamont 4356 (-1525)
Pawnee 4413 (-1582)
Myrick Station 4444 (-1613)
Fort Scott 4464 (-1633)
Cherokee 4490 (-1659)
Mississippian 4576 (-1745)
Log Total Depth 4639 (-1808)

RECEIVED
KANSAS CORPORATION COMMISSION
JAN 08 2007

CONSERVATION DIVISION
WICHITA, KS

Samples were examined microscopically from 3900 feet to Rotary Total Depth. Samples were examined wet and dry and samples from potentially productive zones were viewed under a fluoroscope and checked for oil cut. Following is a description of zones of interest, oil and gas shows, drill stem tests, etc. For a complete lithologic description of all zones refer to the sample log in the back pages of this report. *Depths on drill stem tests as indicated in this report should be moved downhole four feet to correlate with electric log measurements.*

Lansing-Kansas City Zones:

3960-3966 (A Zone)

Limestone, buff, dense to finely crystalline, partly fossiliferous, trace of poor intercrystalline and interfossil porosity, some scattered poor spotted stain, no free oil, no odor, no fluorescence, poor cut. Zone and porosity warrant no further consideration.

3994-4001(B Zone)

Limestone, cream to buff, dense and chalky, mostly tight, no show of oil. Some tan, dense limestone.

4004-4036 (C/D Zone)

Limestone, buff to tan, dense, some chalky, some brown and buff to gray mottled limestone, zone is mostly tight with no shows of oil

4038-4052 (E Zone)

Limestone, buff, finely crystalline, partly fossiliferous, poor to fair scattered intercrystalline and vugular porosity with dead stain. Zone has a faint odor, no live free oil, no fluorescence and a poor cut. Zone warrants no further consideration.

4054-4065 (F Zone)

Limestone, buff to tan to brown, some mottled, dense to finely crystalline, poor intercrystalline porosity, no show of oil.

4068-4122 (G Zone)

Limestone, cream to buff, dense to finely crystalline and chalky, becoming tan to brown to mottled dense limestone with some gray and gray-buff mottled in lower portion of zone mostly tight, no show of oil.

4138-4144 (H Zone)

KCC
JAN 05 2007
CONFIDENTIAL

RECEIVED
KANSAS CORPORATION COMMISSION
JAN 08 2007
CONSERVATION DIVISION
WICHITA, KS

Limestone, buff, finely crystalline, fossiliferous and oolitic, good intercrystalline, interfossil, and interoolitic porosity, good show of free oil, good odor, good spotted stain, fair fluorescence, good cut.

Drill Stem Test No. 1 4115-4150
Misrun – packer failed

Drill Stem Test No. 2 4096-4150
Open 30 minutes, shut in 45 minutes, open 60 minutes, shut in 90 minutes; first flow, fair blow, built to bottom of bucket in seven minutes, no blowback, second flow, ½” blow, built to bottom of bucket in eleven minutes, no blowback; recovered 62 feet of gas in pipe and 558 feet of fluid as follows: 186 feet of oil cut mud (20% oil, 80% mud), 186 feet of gas cut, oil cut, and water cut mud (10% gas, 5% oil, 35% water, 50% mud), 124 feet of gas cut, oil cut, and water cut mud (4% gas, 1% oil, 10% water, 85% mud), 62 feet of mud cut water (70% water, 30% mud). ISIP 1517# FSIP 1361# IFP 80-168# FFP 172-263# IHP 1956# FHP 1831# BHT 122 degrees.

4162-4166 & 4169-4176 (I Zone)

Limestone, buff, finely crystalline, fossiliferous and partly oolitic, good intercrystalline, interfossil, and interoolitic porosity, good show of free oil, good spotted to saturated stain, good odor, fair fluorescence, good cut.

Drill Stem Test No. 3 4160-4182
Open 15 minutes, shut in 30 minutes, open thirty minutes, shut in 60 minutes; first flow, weak blow, died in 5 minutes, second flow, few bubbles to open tool, no blow; recovered one foot of mud with oil spots. ISIP 31# FSIP 36# IFP 17-18# FFP 17-17# IHP 1991# FHP 1907# BHT 114 degrees.

4199-4209 (J Zone)

Limestone, buff to tan, some gray, some mottled, finely crystalline and oolitic, poor oolitic porosity, 95% barren, 5% with poor spotted stain, very slight show of free oil, faint odor, no fluorescence, no cut.

4224-4232 (K Zone)

Limestone, buff, finely crystalline, trace of medium crystalline, fair intercrystalline and scattered vugular porosity, some oolitic with fair oolitic porosity, fair to good spotted to saturated stain, fair to good show of free oil, good odor, fair fluorescence, good cut.

Drill Stem Test No. 4 4208-4224
Open 15 minutes, shut in 30 minutes, open 45 minutes, shut in 90 minutes; first flow, ¼” blow building to 8 inches, no blowback, second flow, surface blow, built to bottom of bucket in 33 minutes, no blowback; recovered 30 feet of mud cut water (55% water, 45%

RECEIVED
KANSAS CORPORATION COMMISSION

JAN 08 2007

CONSERVATION DIVISION
WICHITA, KS

mud) and 240 feet of water (100 % water). ISIP 391# FSIP 392# IFP 20-58# FFP 61-146# IHP 2010# FHP 1965# BHT 126 degrees.

4254-4274 (Middle Creek and L Zones)

Middle creek is limestone, buff to tan, finely crystalline, some medium crystalline, partly fossiliferous, slightly oolitic, fair intercrystalline and small vug porosity, good show of free oil, good spotted to saturated stain, good odor, fair fluorescence, fair cut, L zone is mostly tight with scattered poor staining, no free oil, no odor, no fluorescence, no cut.

Drill Stem Test No. 5 4241-4257

Open 15 minutes, shut in 30 minutes, open 30 minutes, shut in 60 minutes; first flow, weak blow, died in 5 minutes, second flow, blow did not return; recovered 3 feet of mud with oil spots. ISIP 109# FSIP 108# IFP 14-16# FFP 16-18# IHP 2020# FHP 1941# BHT 115 degrees.

Pleasanton Zones:

4301-4336

The pleasanton section consisted of limestone, cream to buff, dense to finely crystalline. The zone was mostly tight with poor spotted stain in a few tight fragments, no odor, no free oil, no fluorescence, no cut. Zone warrants no further consideration.

Marmaton Zones:

4336-4356

Limestone, broken, buff to tan and brown, dense, one or two pieces with poor light spotted stain, no visible porosity, no show of free oil, no odor, no fluorescence, no cut.

Altamont Zones:

4356-4366

Limestone, buff to tan, dense to finely crystalline, trace of scattered poor vugular porosity, poor to fair spotted stain, slight show of free oil, faint odor, no fluorescence, no cut.

4370-4373

Limestone, buff, some tan, dense to finely crystalline, fair scattered vugular porosity, poor to fair spotted stain, slight show of free oil, fair odor, no fluorescence, poor cut.

RECEIVED
KANSAS CORPORATION COMMISSION
JAN 08 2007
CONSERVATION DIVISION
WICHITA, KS

4398-4402

Limestone, buff to tan, dense to finely crystalline, scattered poor to fair vugular porosity, slight show of free oil, fair odor, scattered poor to fair spotted stain, no fluorescence, poor cut, considerable cream chalky limestone.

Drill Stem Test No. 6 4335-4114

Open 15 minutes, shut in 30 minutes, open 45 minutes, shut in 90 minutes; first flow, ¼" blow, built to 6 inches in 15 minutes, no blowback, second flow, blow off bottom of bucket in 35 minutes, no blowback; recovered 124 feet of oil cut mud (2% oil, 98% mud), 124 feet of gas and oil cut mud (10% gas, 2% oil, 88% mud). ISIP 1184# FSIP 1173# IFP 26-61# FFP 70-127# IHP 2143# FHP 2041# BHT 121 degrees.

Pawnee Zones:

4413-4441

The Pawnee section consisted of cream to buff, dense and chalky limestones, with finely crystalline limestones. The zone had no visible porosity and contained no shows of oil.

Myrick Station Zones:

4444-4458

Limestone, buff, finely crystalline, some medium crystalline, partly fossiliferous, poor to fair intercrystalline and interfossil porosity, some fair vugular porosity, good spotted to saturated stain, good odor, good show of free oil, poor to fair fluorescence, fair cut.

Fort Scott Zones:

4464-4478

Limestone, tan to brown, dense, oolitic and dense-oolitic, some buff limestone with dark oolites, mostly tight, no show of oil.

4481-4490

Limestone, tan to brown, finely crystalline and oolitic, scattered fair vugular porosity, some interoolitic porosity, fair spotted stain, fair to good odor, fair show of free oil, poor fluorescence, fair cut.

Drill Stem Test No. 7 4417-4490

Open 15 minutes, shut in 30 minutes, open 45 minutes, shut in 90 minutes; first flow, ¼" blow, built to 7 inches in 15 minutes, no blowback, second flow, blow off bottom of bucket in 26 minutes, no blowback; recovered 310 feet of gas in drill pipe, 82 feet of oil cut mud (10% oil, 90% mud), 62 feet of gas and oil cut mud (10% gas, 10% oil, 80% mud).

RECEIVED
KANSAS CORPORATION COMMISSION

JAN 08 2007

CONSERVATION DIVISION
WICHITA, KS

mud). ISIP 815# FSIP 796# IFP 23-43# FFP 48-87# IHP 2112# FHP 2146# BHT 124 degrees.

Cherokee Zones:

4494-4500

Limestone, tan to dark brown, dense, trace of poor spotted stain in tight pieces, zone is mostly tight, no odor, no free oil, no fluorescence, no cut.

4503-4528

Limestone, broken, tan to dark brown, dense, rare fragment with poor vugular porosity and trace of poor spotted stain, no free oil, no odor, no fluorescence, no cut.

4531-4544 (Johnson)

Limestone, buff to tan to brown, dense to finely crystalline, scattered fair vugular porosity, fair spotted stain, some good saturated stain, fair show of free oil, fair odor, poor fluorescence, fair cut.

Drill Stem Test No. 8 4484-4540

Open 15 minutes, shut in 30 minutes, open 30 minutes, shut in 60 minutes; first flow, weak ¼" blow, died in 8 minutes, no blow on second flow; recovered 10 feet of mud with oil spots; ISIP 1074# FSIP 1039# IFP 16-20# FFP 21-26# IHP 2220# FHP 2117# BHT 120 degrees.

4546-4576

Sand, white, calcareous, fine grained, some medium grained, well sorted, well cemented, mostly tight, some scattered friable with poor intergranular porosity, no show of oil

Mississippian Zones:

4576-4594

Limestone, buff to tan, dense to finely crystalline, oolitic with dense-oolitic, considerable white to cream chalky limestone, no visible porosity, no show of oil, some tan to brown dense limestone, some white opaque chert.

4596-4609

Limestone, buff, some gray, finely crystalline and oolitic, mostly tight, no show of oil, some cream chalky limestone.

RECEIVED
KANSAS CORPORATION COMMISSION
JAN 08 2007
CONSERVATION DIVISION
WICHITA, KS

4609-4630

Limestone, buff, finely crystalline and oolitic, some buff with dark oolites, interval is mostly tight, no show of oil.

4630-4635

Limestone, buff, some tan, dense to finely crystalline, rare fragment with isolated vugs and trace of poor spotted stain, no free oil, no odor, no fluorescence, no cut, zone warrants no further consideration.

4635

Rotary Total Depth

Conclusions and Recommendations:

Careful analysis of sample shows, drill stem test information, structural position, and electric logs led to the decision that, while the No. 1 Jennison might produce small amounts of oil, it would either be dry or would not produce enough oil to justify the expense of setting pipe on this well. The decision was therefore made to plug and abandon the No. 1-32 Jennison

Respectfully submitted,

Robert C. Lewellyn
Petroleum Geologist

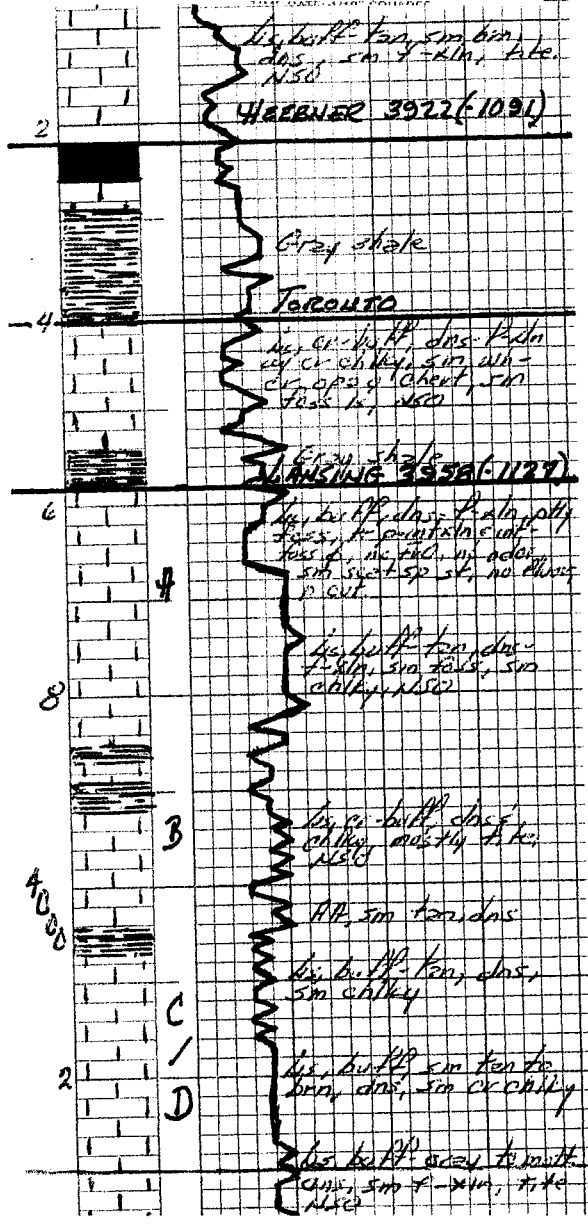
RCL:me

RECEIVED
KANSAS CORPORATION COMMISSION
JAN 08 2007
CONSERVATION DIVISION
WICHITA, KS

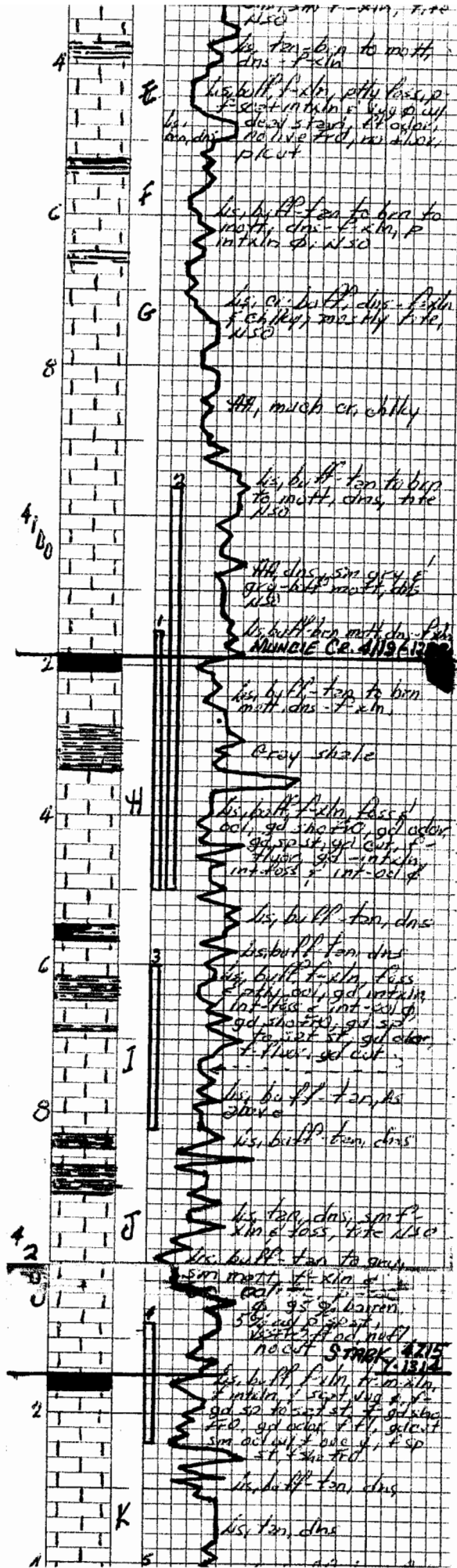
STATE **KANSAS** COMPANY **LARSON OPERATING Co.**
 COUNTY **LANE** FARM **JENNIFER** WELL NO. **1-32**
 BLOCK SURVEY
 SEC. **32** **1210 FSL E 500' FWL**
 T. **16S** R. **29W** TOTAL DEPTH **4635**
 CONTRACTOR **Southwind Rig #1**
 COMMENCED **9-12-2006**
 COMPLETED **9-24-2006**
 REMARKS **depths should be moved**
 ALTITUDE **2831 KB**
 PRODUCTION **D & A** **downhole 4 feet (for EL correction)**
Robert C. Jewell - Geologist

CASING RECORD
8 5/8" @ 273 KBM
 SHOT QUARTS BETWEEN

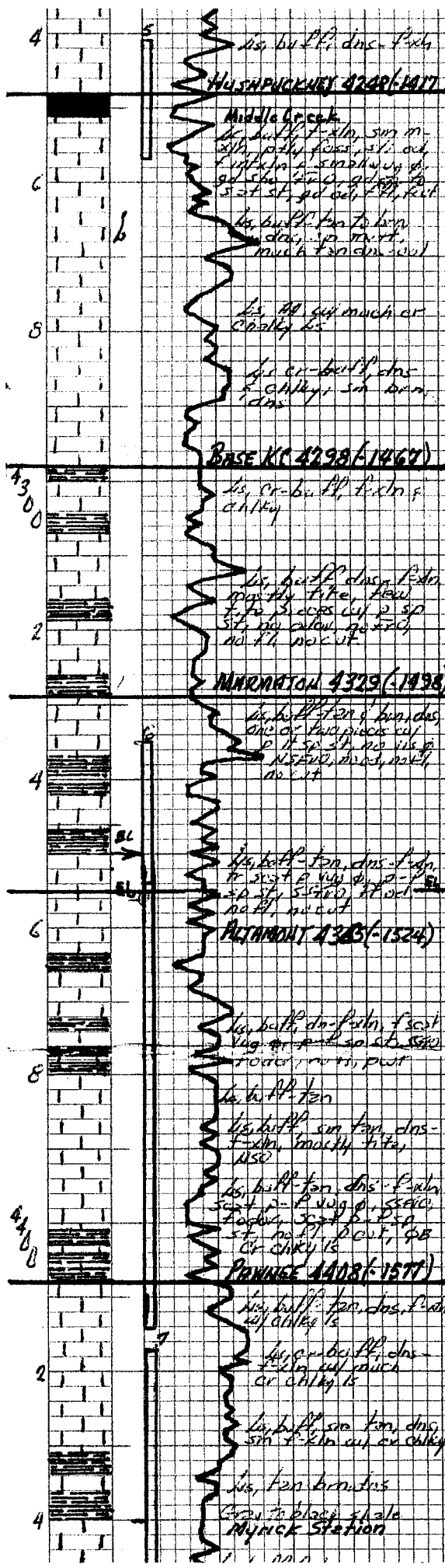
TIME RATE SCALE: 1/10" = MINUTES
Kraftbill 450-A TULSA OKLAHOMA 74101 PRINTED IN U.S.A.



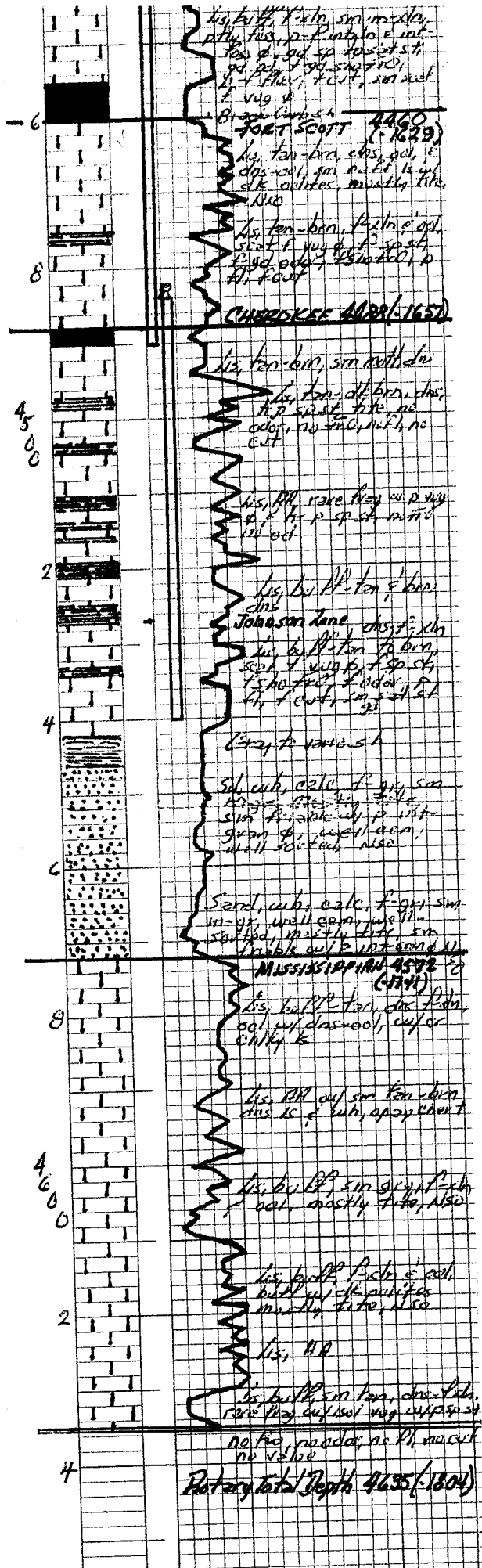
RECEIVED
 KANSAS CORPORATION COMMISSION
 JAN 08 2007
 CONSERVATION DIVISION
 WICHITA, KS



RECEIVED
 KANSAS CORPORATION COMMISSION
 JAN 08 2007
 CONSERVATION DIVISION
 WICHITA, KS



RECEIVED
 KANSAS CORPORATION COMMISSION
 JAN 08 2007
 CONSERVATION DIVISION
 WICHITA, KS



RECEIVED
 KANSAS CORPORATION COMMISSION
 JAN 08 2007
 CONSERVATION DIVISION
 WICHITA, KS