

Sun Oil Well Cementing, Inc.

DRILL STEM TEST DATA

P.O. Box 169

Great Bend, Kansas 67530

Lease	Popp	Well No.	2	Date	8-26-78
County	Barton	Sec.	4	Twp.	16
		Rng.	14	Elevation	
Company	L. G. Stephenson & Co.			Test No.	1
Contractor	Red Tiger Drlg.			Zone Tested	Topeka
Charge To	L. G. Stephenson & Co.			Ticket #	2863
Approved By	James W. Spellman			Tester	Roy Bowman

Initial Hydro Mud Press. 1701 P.S.I.

Initial Flow Press. 112 To 136 P.S.I. Initial Flow Period 45 Min.

Initial Shut-in Press. 1040 P.S.I. Initial Shut-in 45 Min.

Final Flow Press. 136 To 163 P.S.I. Final Flow Period 45 Min.

Final Shut-in Press. 1020 P.S.I. Final Shut-in 45 Min.

Final Hydro Mud Press. 1670 P.S.I. TIME TOOL OPEN 6:50 P.M.

Temperature 95

Mud Weight 9.9 Viscosity 37

Fluid Loss 8.0

Interval Tested 2978 To 3040

Top Packer Depth 2973 Surface Choke Size

Bottom Packer Depth 2978 Bottom Choke Size 5/8

Total Depth 3040 Main Hole Size 7 7/8

Drill Pipe Size Wt Rubber Size 6 3/4

Drill Collar I.D. Ft. Run

Blow Fair blow, thru-out test

Recovery 210' muddy water. Slid 4' to T.D.

Sun Oil Well Cementing, Inc.

DRILL STEM TEST DATA

P.O. Box 169

Great Bend, Kansas 67530

Lease	Popp	Well No.	2	Date	8-27-78
County	Barton	Sec.	4	Twp.	16
		Rng.	14	Elevation	
Company	L. G. Stephenson & Co.			Test No.	2
Contractor	Red Tiger Drlg.			Zone Tested	Lansing
Charge To	L. G. Stephenson & Co.			Ticket #	2864
Approved By	James W. Spellman			Tester	Roy Bowman

Initial Hydro Mud Press. 1792 P.S.I.

Initial Flow Press. 51 To 51 P.S.I. Initial Flow Period 30 Min.

Initial Shut-in Press. 604 P.S.I. Initial Shut-in 30 Min.

Final Flow Press. 51 To 46 P.S.I. Final Flow Period 30 Min.

Final Shut-in Press. 461 P.S.I. Final Shut-in 30 Min.

Final Hydro Mud Press. 1733 P.S.I. TIME TOOL OPEN 2:15 P.M.

Temperature 105

Mud Weight 9.8 Viscosity 42

Fluid Loss 8.0

Interval Tested 3140 To 3161

Top Packer Depth 3135 Surface Choke Size

Bottom Packer Depth 3140 Bottom Choke Size 5/8

Total Depth 3161 Main Hole Size 7 7/8

Drill Pipe Size Wt Rubber Size 6 3/4

Drill Collar I.D. Ft. Run

Blow Weak, dead 11 min. into I.F.P.

Recovery 15' mud. Few oil specks on top of tool. Slid 3' to T.D.

.....

.....

.....

.....

Sun Oil Well Cementing, Inc.

DRILL STEM TEST DATA

P.O. Box 169

Great Bend, Kansas 67530

Lease	Popp	Well No.	2	Date	8-28-78
County	Barton	Sec.	4	Twp.	16
		Rng.	14	Elevation	
Company	L. G. Stephenson & Co.			Test No.	3
Contractor	Red Tiger Drlg.			Zone Tested	Lansing
Charge To	L. G. Stephenson			Ticket #	2865
Approved By	James W. Spellman			Tester	Roy Bowman

Initial Hydro Mud Press. 1772 P.S.I.

Initial Flow Press. 36 To 40 P.S.I. Initial Flow Period 30 Min.

Initial Shut-in Press. 367 P.S.I. Initial Shut-in 30 Min.

Final Flow Press. 40 To 51 P.S.I. Final Flow Period 30 Min.

Final Shut-in Press. 367 P.S.I. Final Shut-in 30 Min.

Final Hydro Mud Press. 1762 P.S.I. TIME TOOL OPEN 12:30 A.M.

Temperature 105

Mud Weight 9.9 Viscosity 42

Fluid Loss 8.7

Interval Tested 3161 To 3179

Top Packer Depth 3156 Surface Choke Size _____

Bottom Packer Depth 3161 Bottom Choke Size 5/8

Total Depth 3179 Main Hole Size 7 7/8

Drill Pipe Size _____ Wt _____ Rubber Size 6 3/4

Drill Collar I.D. _____ Ft. Run _____

Blow Weak, thru-out test.

Recovery 70' muddy water.

Sun Oil Well Cementing, Inc.

DRILL STEM TEST DATA

P.O. Box 169

Great Bend, Kansas 67530

Lease	Popp	Well No.	2	Date	8-29-78
County	Barton	Sec.	4	Twp.	16
		Rng.	14	Elevation	
Company	L. G. Stephenson & Co.			Test No.	4
Contractor	Red Tiger Drlg.			Zone Tested	Lansing
Charge To	L. G. Stephenson & Co.			Ticket #	2866
Approved By	James W. Spellman			Tester	Roy Bowman

Initial Hydro Mud Press. 1863 P.S.I.

Initial Flow Press. 40 To 30 P.S.I. Initial Flow Period 30 Min.

Initial Shut-in Press. 51 P.S.I. Initial Shut-in 30 Min.

Final Flow Press. 34 To 34 P.S.I. Final Flow Period 30 Min.

Final Shut-in Press. 40 P.S.I. Final Shut-in 30 Min.

Final Hydro Mud Press. 1849 P.S.I. TIME TOOL OPEN 1:05 A.M.

Temperature 107

Mud Weight 9.3 Viscosity 39

Fluid Loss 15.7

Interval Tested 3275 To 3306

Top Packer Depth 3270 Surface Choke Size _____

Bottom Packer Depth 3275 Bottom Choke Size 5/8

Total Depth 3306 Main Hole Size 7 7/8

Drill Pipe Size _____ Wt _____ Rubber Size 6 3/4

Drill Collar I.D. _____ Ft. Run _____

Blow Weak, dead 10 min. into I.F.P.

Recovery 15' watery mud. Oil on top of tool.

Sun Oil Well Cementing, Inc.

DRILL STEM TEST DATA

P.O. Box 169

Great Bend, Kansas 67530

Lease	Popp	Well No.	2	Date	8-29-78
County	Barton	Sec.	4	Twp.	16
		Rng.	14	Elevation	
Company	L. G. Stephenson & Co.			Test No.	5
Contractor	Red Tiger Drlg.			Zone Tested	Arb.
Charge To	L. G. Stephenson & Co.			Ticket #	2867
Approved By	James Spellman			Tester	Roy Bowman

Initial Hydro Mud Press. 1884 P.S.I.

Initial Flow Press. 40 To 61 P.S.I. Initial Flow Period 30 Min.

Initial Shut-in Press. 336 P.S.I. Initial Shut-in 30 Min.

Final Flow Press. 51 To 61 P.S.I. Final Flow Period 30 Min.

Final Shut-in Press. 265 P.S.I. Final Shut-in 30 Min.

Final Hydro Mud Press. 1835 P.S.I. TIME TOOL OPEN 8:10 P.M.

Temperature 107

Mud Weight 9.9 Viscosity 40

Fluid Loss 12.0

Interval Tested 3356 To 3376

Top Packer Depth 3351 Surface Choke Size

Bottom Packer Depth 3356 Bottom Choke Size 5/8

Total Depth 3376 Main Hole Size 7 7/8

Drill Pipe Size Wt Rubber Size 6 3/4

Drill Collar I.D. Ft. Run

Blow Weak, dead 15 min. into I.F.P.

Recovery 10' Mud

.....

.....

.....

.....

Sun Oil Well Cementing, Inc.

DRILL STEM TEST DATA

P.O. Box 169

Great Bend, Kansas 67530

Lease	Popp	Well No.	2	Date	8-30-78
County	Barton	Sec.	4	Twp.	16
		Rng.	14	Elevation	
Company	L. G. Stephenson & Co.			Test No.	6
Contractor	Red Tiger Drlg.			Zone Tested	Arb.
Charge To	L. G. Stephenson & Co.			Ticket #	2868
Approved By	Jim Spellman			Tester	Roy Bowman

Initial Hydro Mud Press. 1894 P.S.I.

Initial Flow Press. 71 To 61 P.S.I. Initial Flow Period 30 Min.

Initial Shut-in Press. 673 P.S.I. Initial Shut-in 30 Min.

Final Flow Press. 61 To 51 P.S.I. Final Flow Period 30 Min.

Final Shut-in Press. 428 P.S.I. Final Shut-in 30 Min.

Final Hydro Mud Press. 1865 P.S.I. TIME TOOL OPEN 7:25 A.M.

Temperature 109

Mud Weight 9.8 Viscosity 39

Fluid Loss 12.0

Interval Tested 3368 To 3384

Top Packer Depth 3363 Surface Choke Size

Bottom Packer Depth 3368 Bottom Choke Size 5/8

Total Depth 3384 Main Hole Size 7 7/8

Drill Pipe Size Wt Rubber Size 6 3/4

Drill Collar I.D. Ft. Run

Blow ... Fair, decreasing to weak, dead 30 min. into I.F.P.

Recovery ... 50' mud ... Oil on top of tool. ... Slid 7' to T.D.

.....

.....

.....

.....

Sun Oil Well Cementing, Inc.

DRILL STEM TEST DATA

P.O. Box 169

Great Bend, Kansas 67530

Lease	Popp	Well No.	2	Date	8-30-78
County	Barton	Sec.	4	Twp.	16
		Rng.	14	Elevation	
Company	L. G. Stephenson & Co.			Test No.	7
Contractor	Red Tiger Drlg.			Zone Tested	Arb.
Charge To	L. G. Stephenson & Co.			Ticket #	7:00 P.M.
Approved By	James Spellman			Tester	Roy Bowman

Initial Hydro Mud Press. 1904 P.S.I.

Initial Flow Press. 102 To 122 P.S.I. Initial Flow Period 30 Min.

Initial Shut-in Press. 785 P.S.I. Initial Shut-in 30 Min.

Final Flow Press. 132 To 142 P.S.I. Final Flow Period 30 Min.

Final Shut-in Press. 775 P.S.I. Final Shut-in 30 Min.

Final Hydro Mud Press. 1873 P.S.I. TIME TOOL OPEN 7:00 P.M.

Temperature 110

Mud Weight 9.8 Viscosity 42

Fluid Loss 12.0

Interval Tested 3360 To 3391

Top Packer Depth 3355 Surface Choke Size _____

Bottom Packer Depth 3360 Bottom Choke Size 5/8

Total Depth 3391 Main Hole Size 7 7/8

Drill Pipe Size _____ Wt _____ Rubber Size 6 3/4

Drill Collar I.D. _____ Ft. Run _____

Blow Very weak, dead 4 min. into I.F.P. Flushed tool on I.F.P.

Recovery 125' mud. Slid 15' to T.D.

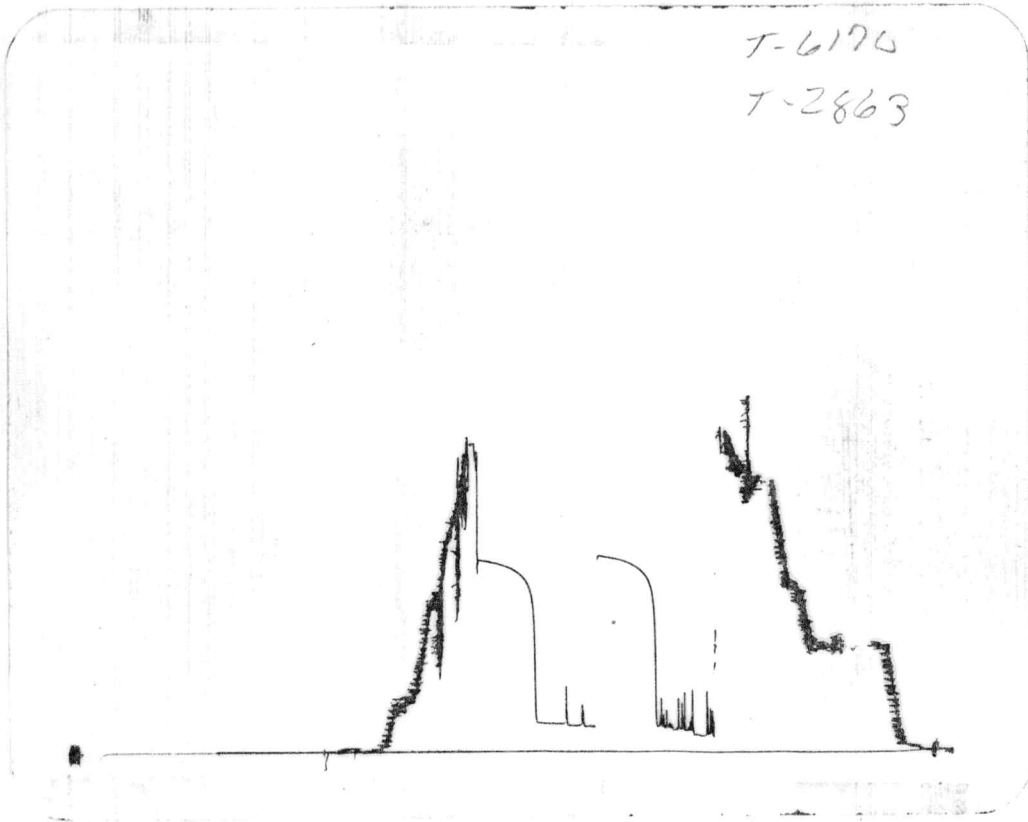
.....

.....

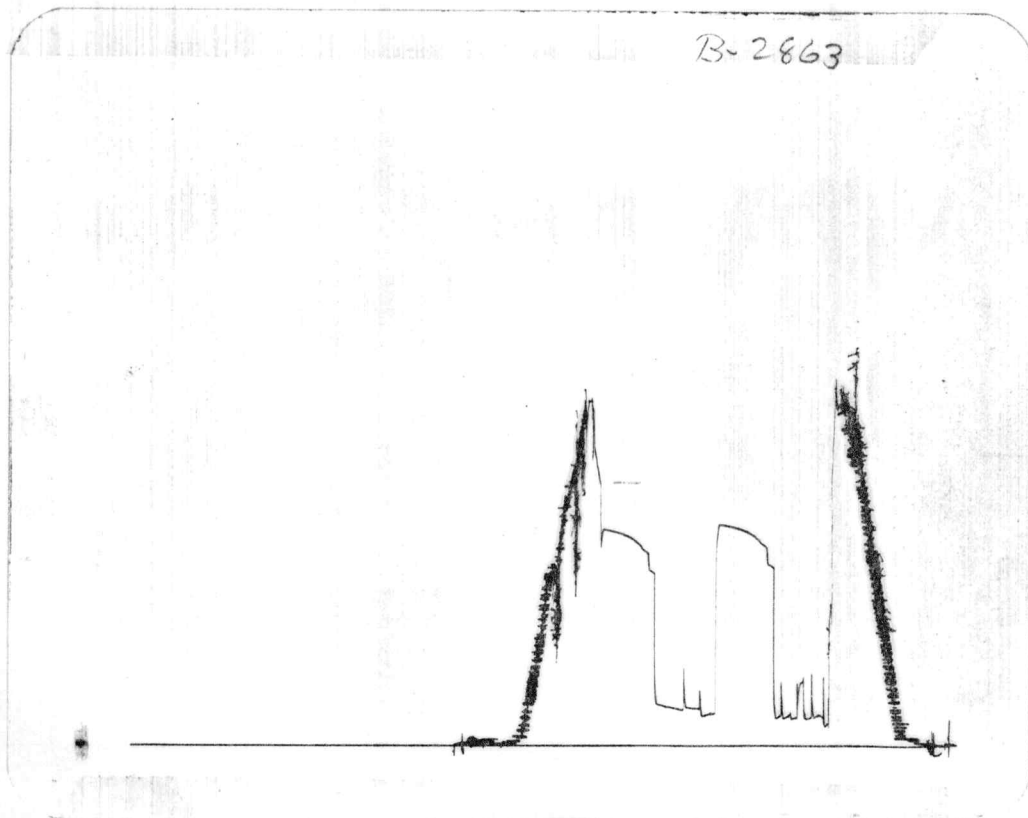
.....

.....

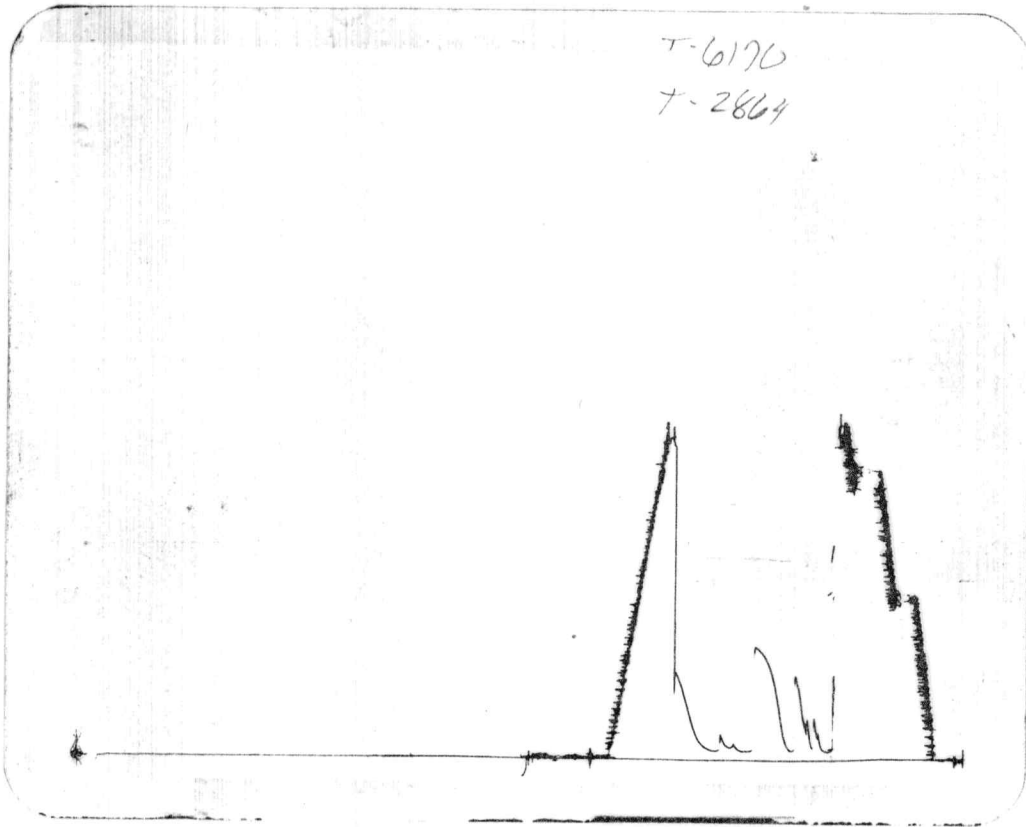
TOP



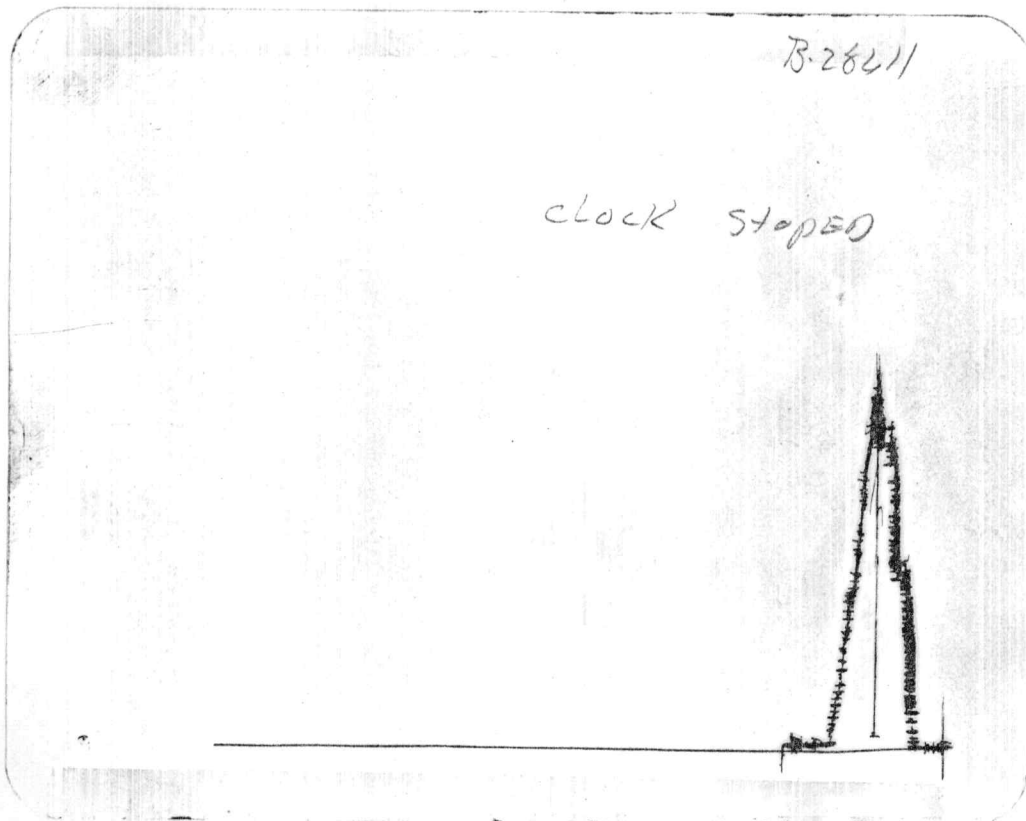
BOTTOM



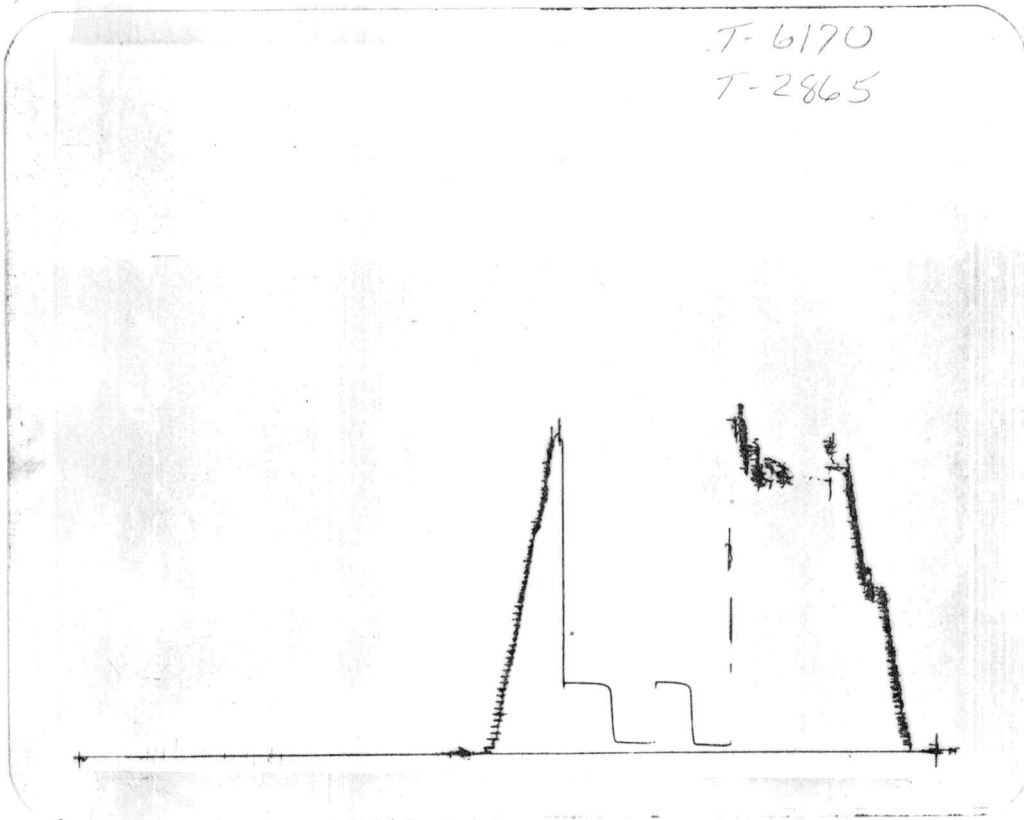
TOP



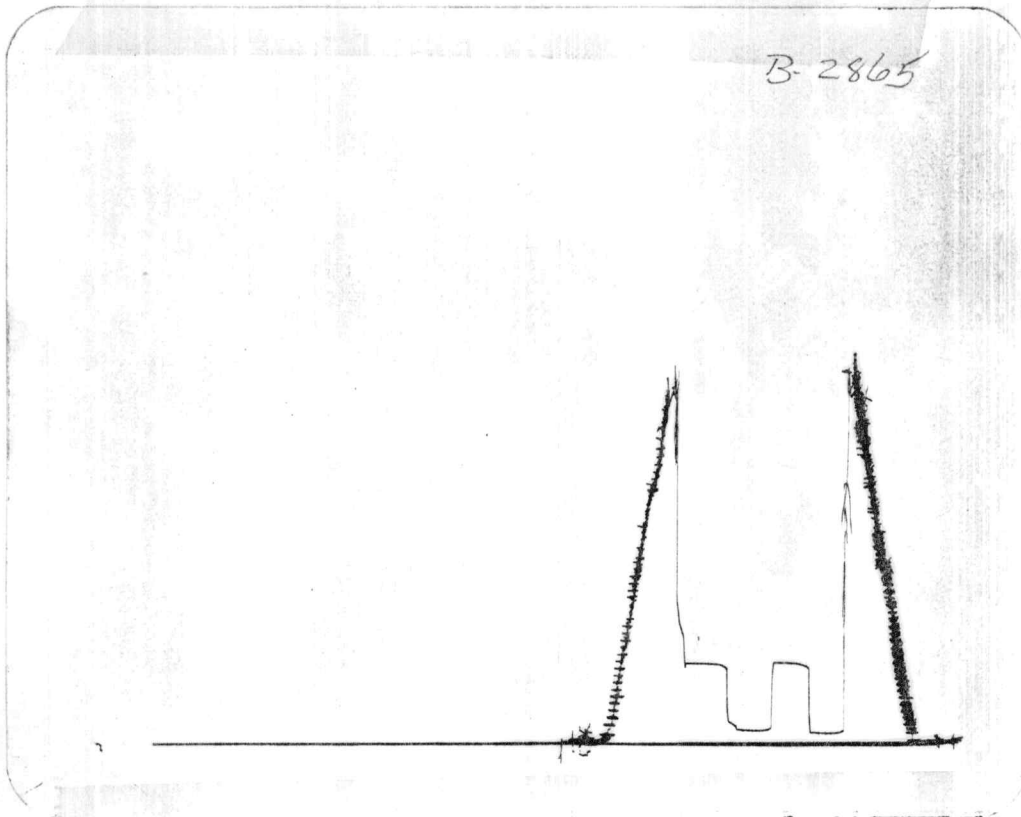
BOTTOM



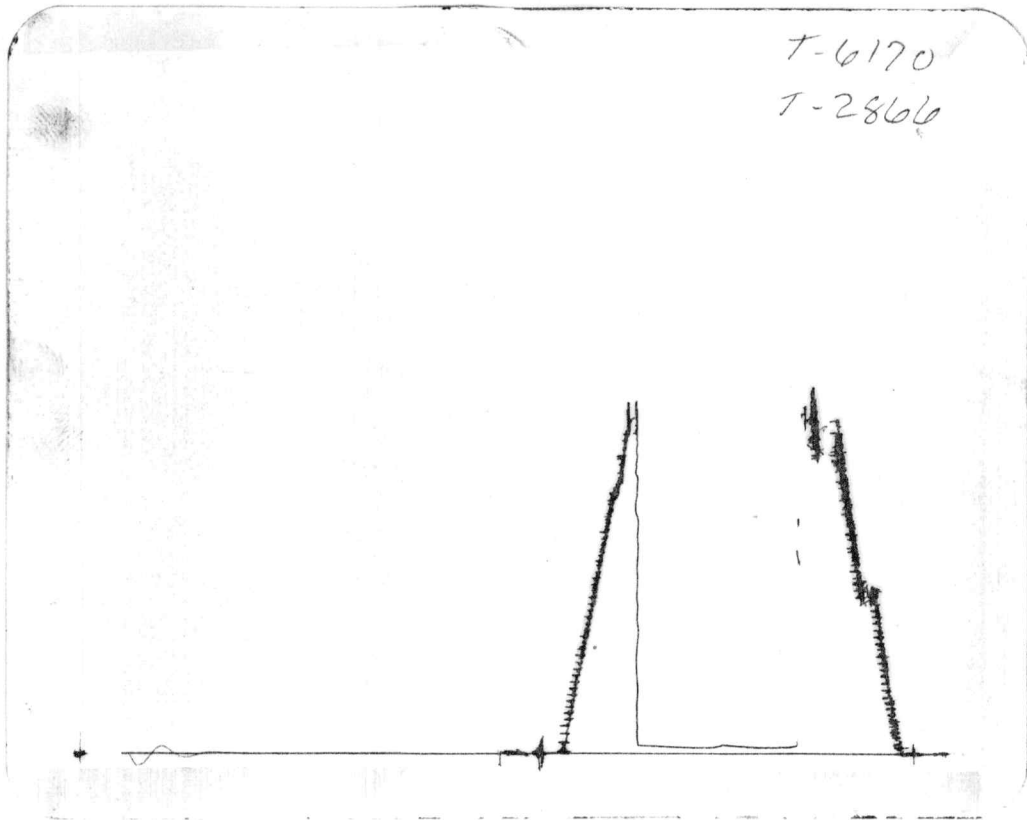
TOP



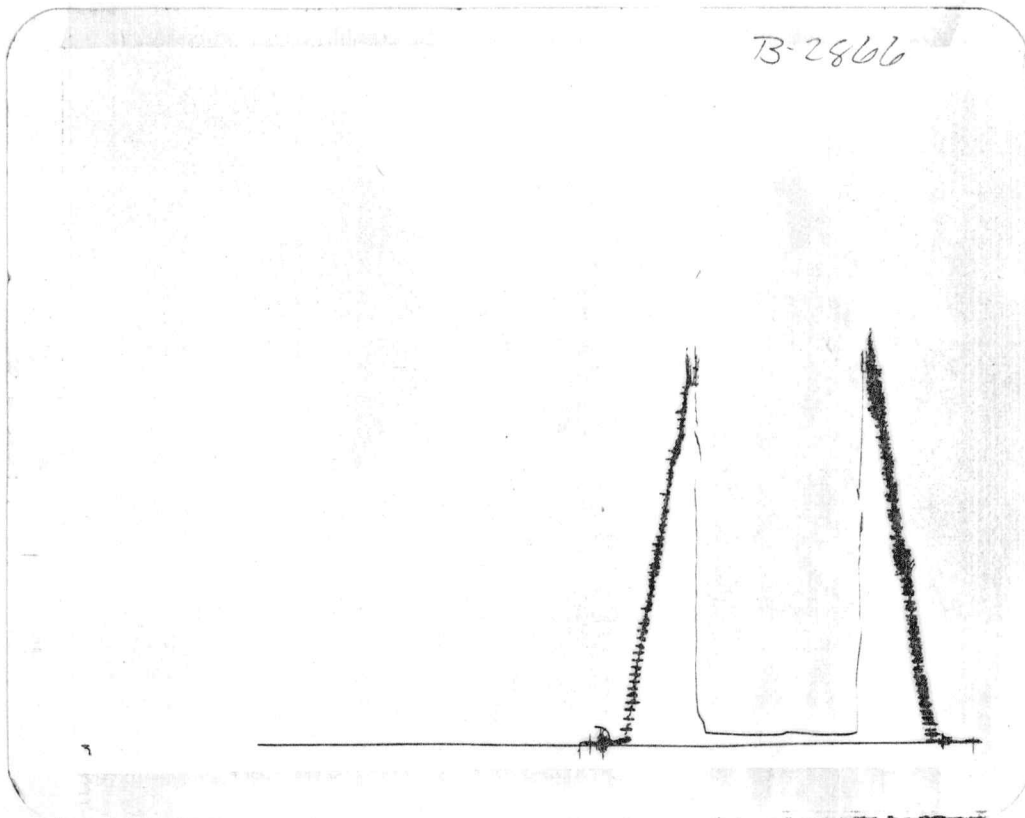
BOTTOM



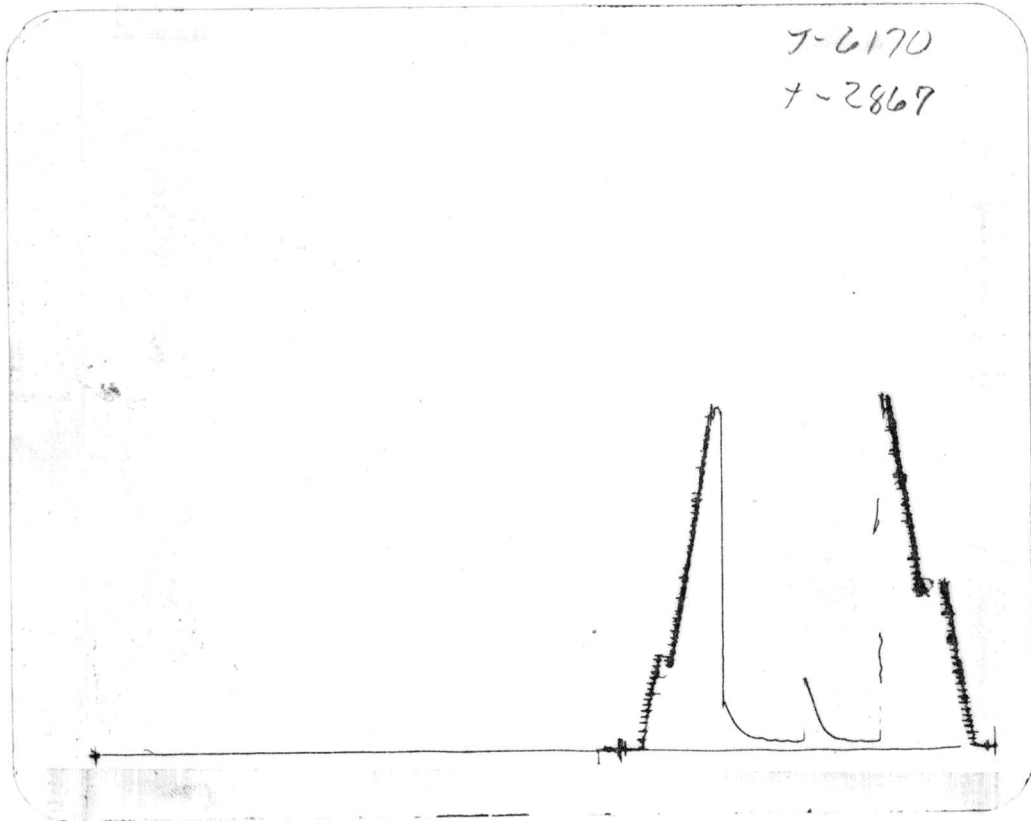
TOP



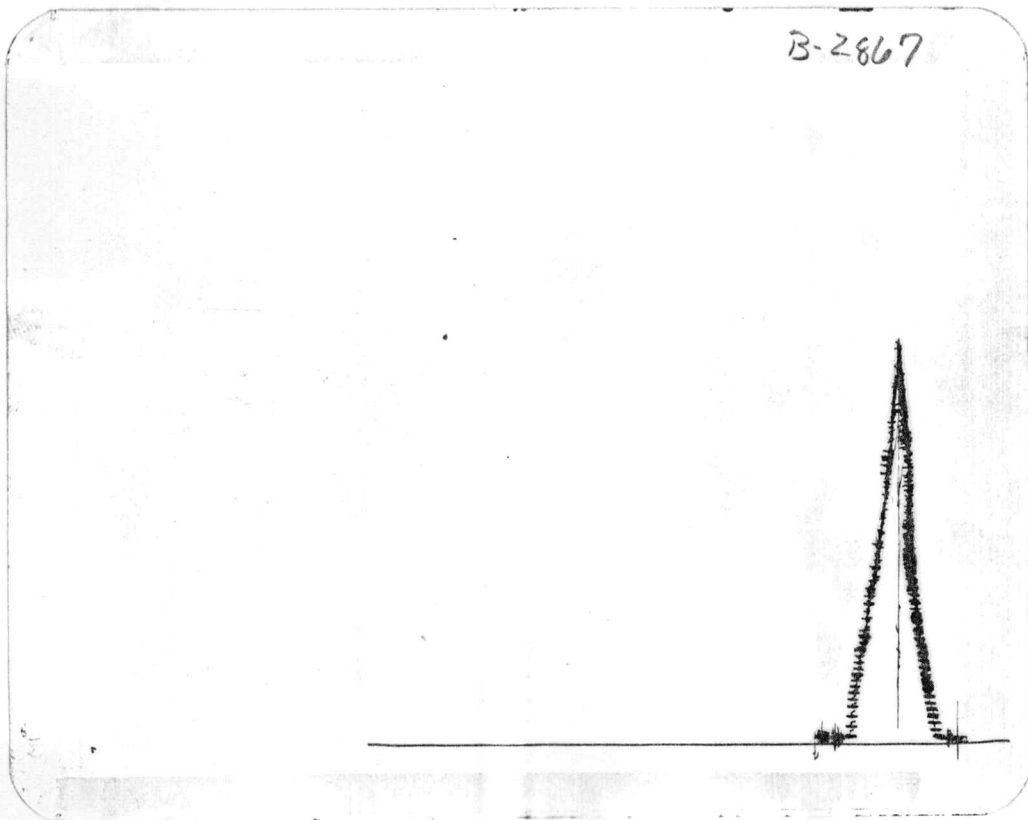
BOTTOM



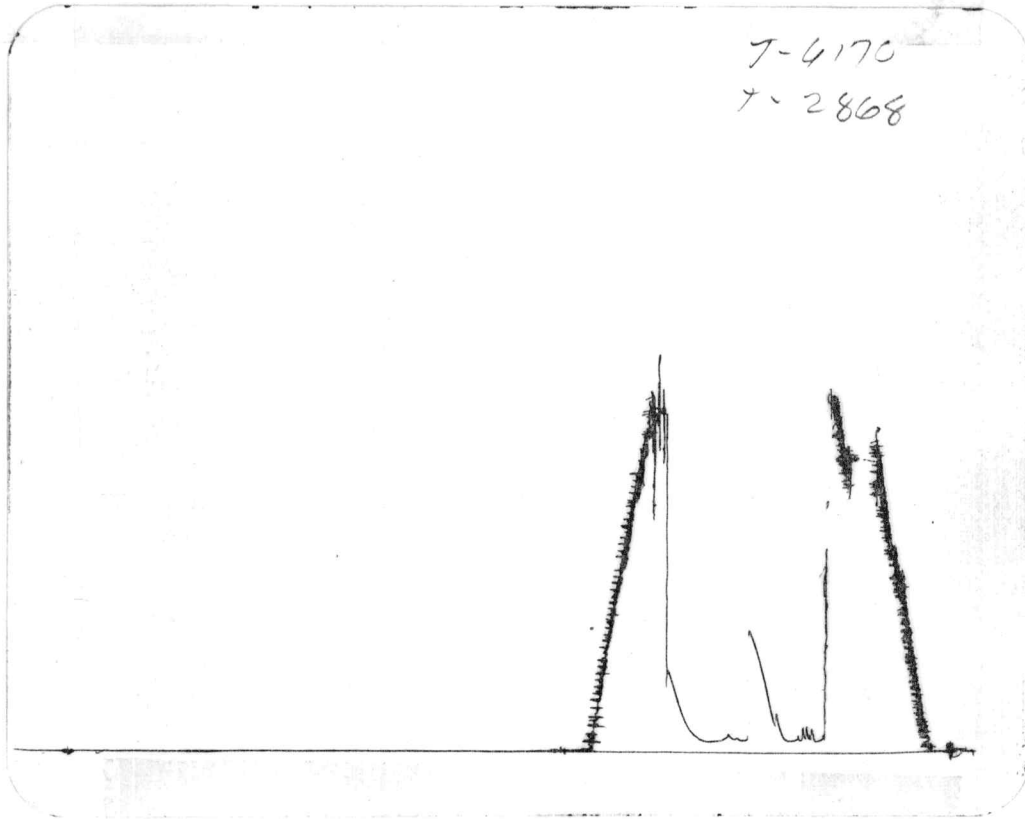
TOP



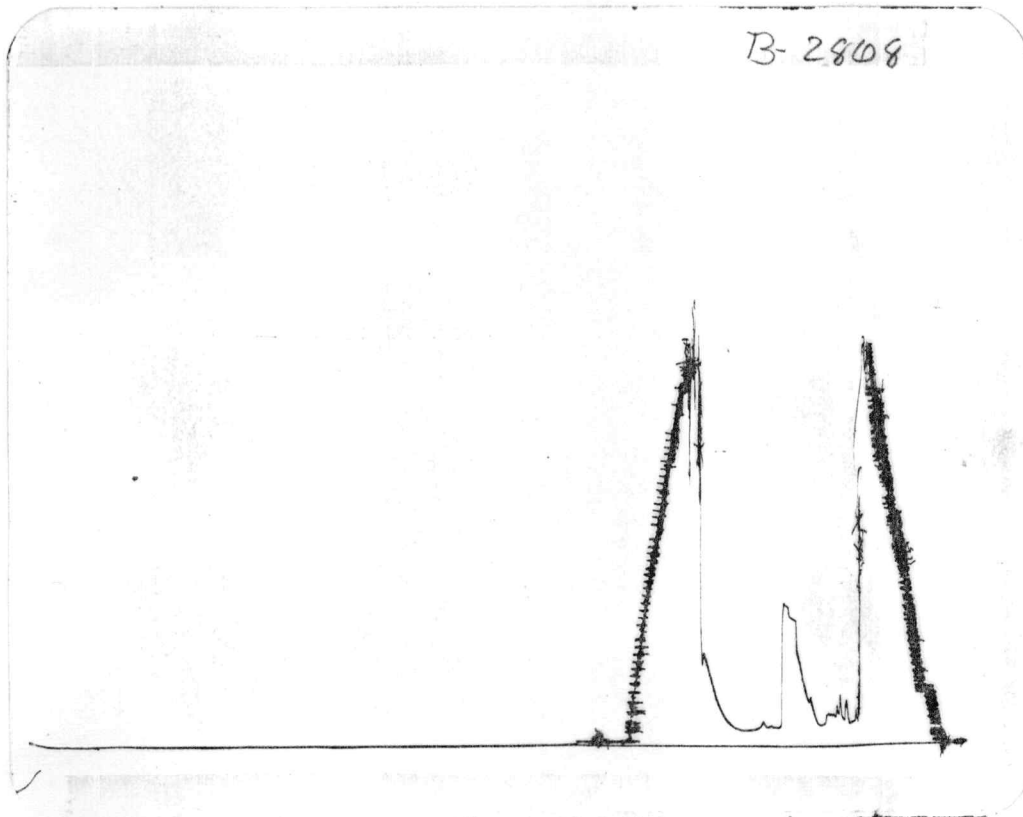
BOTTOM



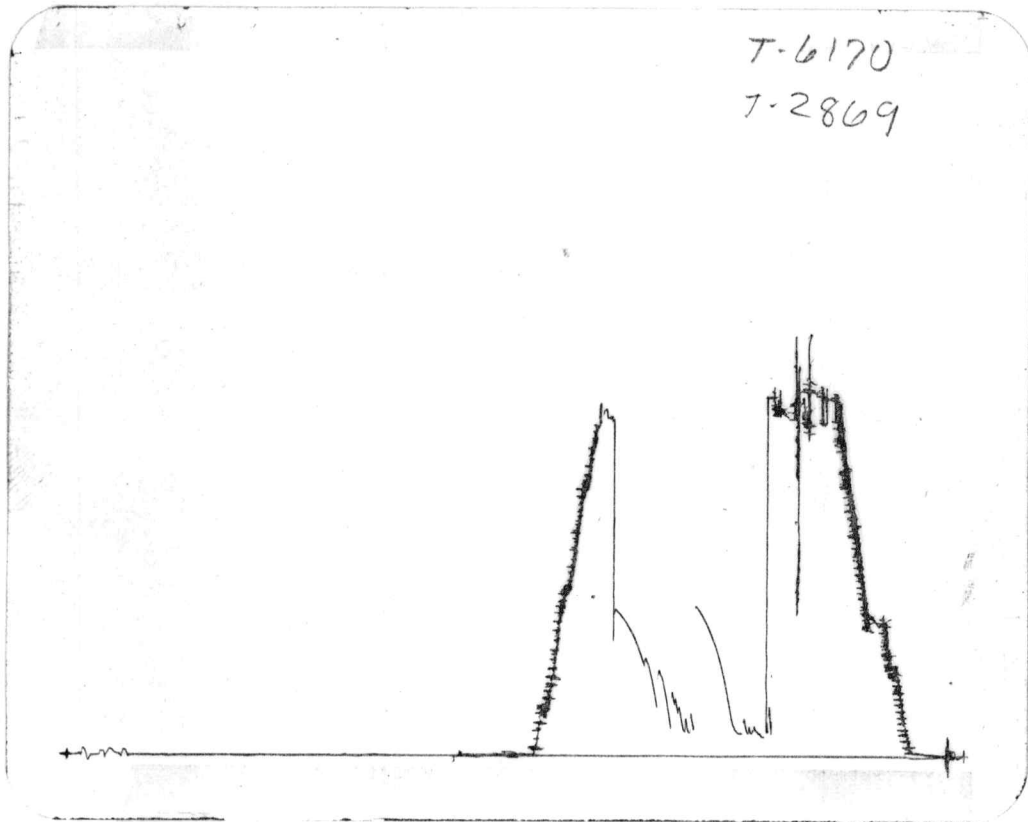
TOP



BOTTOM



TOP



BOTTOM

