

12/15/85

12-16-86

1-16-43W

**RELEASED**  
Date: JAN 1 1987  
FROM CONFIDENTIAL

CONFIDENTIAL

TXO PRODUCTION CORP.  
EDSALL "F" #7  
NESESE SEC. 4  
T16S R43W  
GREELEY COUNTY  
KANSAS

NE SE SE

RECEIVED  
STATE CORPORATION COMMISSION

OCT 7 1985

CONSERVATION DIVISION  
Wichita, Kansas

OCT 07 1985  
State Geological Survey  
WICHITA BRANCH

RICHARD E. BACON  
GEOLOGIST

1-16-43W

SUMMARY AND CONCLUSION **CONFIDENTIAL**

THE EDSALL "F" #7 WAS DRILLED TO A DRILLERS DEPTH OF 5300' SUBSEA -1379' AND A LOGGERS DEPTH OF 5298' -1377'. THE PRIMARY OBJECTIVE WAS THE JOHANNES SAND WITH POSSIBLE SECONDARY POTENTIAL IN THE STOCKHOLM SAND.

THE JOHANNES SAND CAME IN AT 5116' -1195, 26' HIGH THE THE DUE SOUTH "F" #3 AND 15' LOW TO THE DUE NORTH "F" #4. THIS SAND GRADED FROM A WHITE, TRANSLUCENT, FINE TO MEDIUM GRAIN, SUBANGULAR TO SUBROUND, FIRM, CALCAREOUS, SLIGHTLY GLAUCONITIC, WITH FAIR SORTING TO A TRANSLUCENT, CLEAR, COARSE TO VERY COARSE GRAIN, ANGULAR TO SUBANGULAR, POORLY SORTED AND UNCONSOLIDATED SAND. SAMPLE QUALITY WAS POOR THROUGHOUT THE INTERVAL. SHOWS WERE MINIMAL BUT TYPICALLY IDENTIFIED BY TRACES OF AN EVEN BRIGHT YELLOW FLUORESCENCE, A SLOW FAINT PALE YELLOW STREAMING WITH AN EVEN YELLOW GREEN RING.

LOGS ENHANCED THE SAMPLE SHOWS. GAMMA RAY GAVE A 17' SAND SECTION WITH A RESISTIVITY OF 17 TO 18 OHMSAND A POROSITY OF 17 TO 18% AND A GOOD SP AND MUD CAKE. USING A .07 R<sub>w</sub> THIS SAND CALCULATED AT 32% WATER SATURATION.

THUS, THE DECISION WAS MADE TO RUN PIPE ON THE EDSALL "F" #7 FOR COMPLETION AS A JOHANNES SAND OIL WELL.

OCT 07 1985  
State Geological Survey  
WICHITA BRANCH

1-16-43W

LITHOLOGIC TOPS

CONFIDENTIAL

	EDSALL "F" #7	EDSALL "F" #3	EDSALL "F" #4
STONE CORRAL	2761 +1160	2752 +1153	2756 +1159
FORAKER	3574 +347	3565 +340	3566 +349
TOPEKA	3922 -1	3913 -8	3916 -1
HEEBNER	4147 -226	4139 -234	4138 -223
LANSING	4248 -327	4242 -337	4243 -233
MARMATON	4634 -713	4627 -722	4621 -706
FT. SCOTT	4717 -796	4711 -806	4702 -787
CHEROKEE	4762 -841	4760 -855	4750 -835
ATOKA	4883 -962	4888 -983	4871 -956
MORROW	5058 -1137	5055 -1153	5040 -1125
JOHANNES SAND	5116 -1195	5106 -1221	5095 -1180
STOCKHOLM SAND	ABSENT	5153 -1248	ABSENT
LOWER LIME	5144 -1223	5174 -1269	5121 -1206
MISSISSIPIAN	5209 -1288	5220 -1315	5196 -1281

OCT 07 1985  
State Geological Survey  
WICHITA BRANCH

1-16-43W

**CONFIDENTIAL**

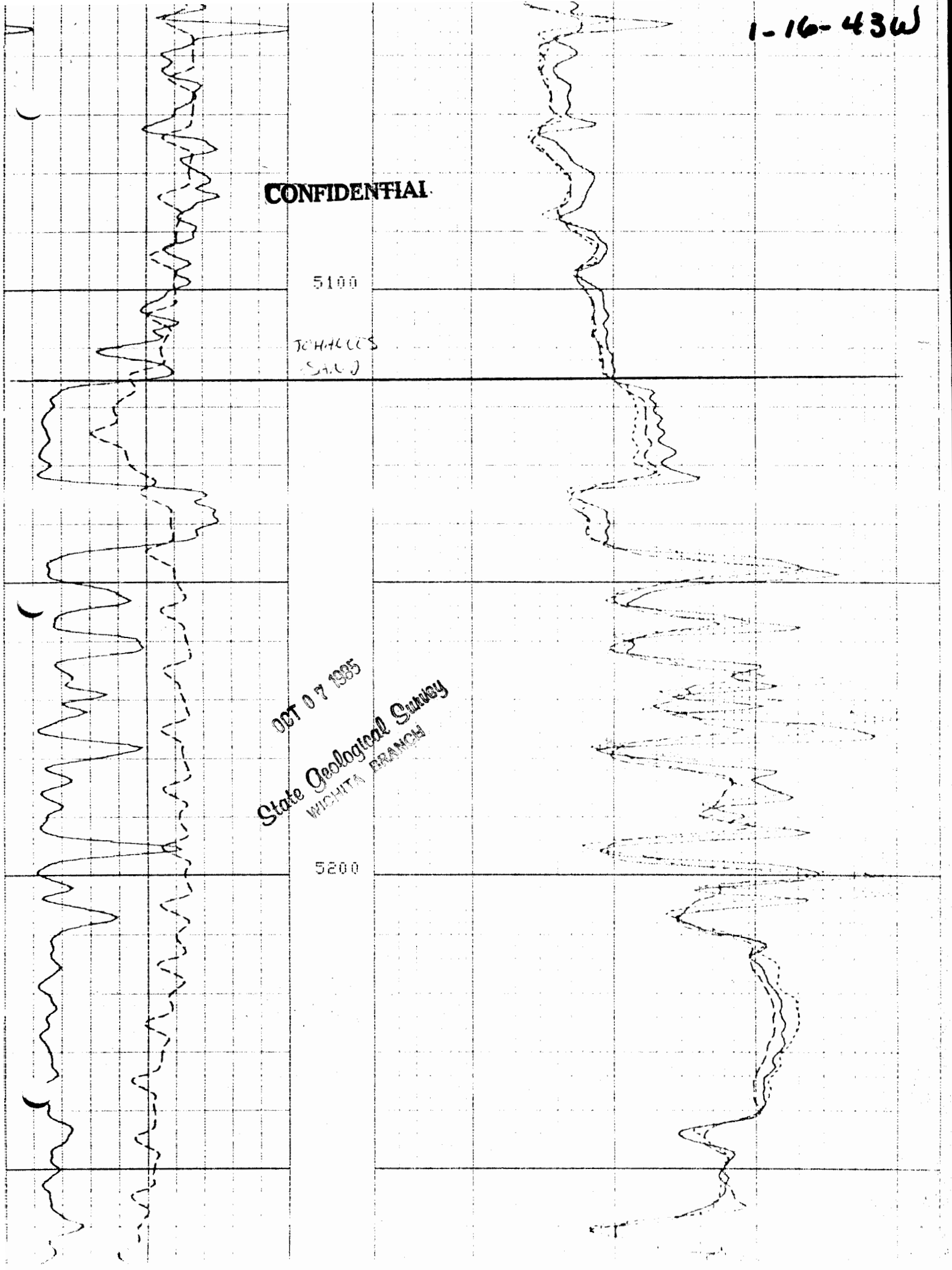
5100

JOHNALL'S  
(S.A.C.)

OCT 07 1985

State Geological Survey  
WICHITA BRANCH

5200



CONFIDENTIAL

5100

SONAQUES  
SALQ

OCT 07 1985

State Geological Survey  
WICHITA BRANCH

SS/2.68

5200

LS/2.71

gamma ray FR

1-16-43

1-16-43W

RESUME

OPERATOR: TXO PRODUCTION CORP.

WELL NAME & LOCATION: EDSALL "F" #7 NESESE SEC. 1 T16S R43W

COUNTY: GREELEY

STATE: KANSAS

SPUD DATE: SEPTEMBER 9, 1985 2:15pm

**CONFIDENTIAL**

COMPLETION DATE (TD): SEPTEMBER 15, 1985 9:15pm

ELEVATIONS: GL 3907' KB 3921'

TOTAL DEPTHS: DRILLER 5300' LOGGER 5298'

CONTRACTOR: SAGE DRILLING CO., INC. RIG #1

GEOLOGIST: RICHARD E. BACON

ENGINEER: FRANK TSURU

TOOL PUSHER: VIRGIL SHAWN

MUD COMPANY: SERVICE MUD ENGINEER JIM HERNANDEZ

TYPE OF MUD: CHEMICAL GEL

HOLE SIZES: 12 1/4" to 485' 7 7/8" 485' to TD

CASING: 11 JOINTS K-55 24# 8 5/8" TALLY 467'

CORES: NONE

DST: NONE

E-LOGS BY: SCHLUMBERGER COLBY, KS

LOG SUITE: DIL/SFL/GR 5295' to 3390'  
LDL/CNL/GR 5295' to 478'  
CYBERLOOK 5275' to 4140'

OCT 07 1985  
State Geological Survey  
WICHITA BRANCH

LOGGING ENGINEER: JON MUSSELMAN

BOTTOM FORMATION: STE: GENEVIEVE (MISSISSIPPIAN)

WELL STATUS: TO COMPLETE AS A JOHANNES SAND OIL WELL

1-16-43W

WELL CHRONOLOGY

<u>DATE</u>	7:00am <u>DEPTH</u>	<u>FOOTAGE</u>	<u>ACTIVITY</u>
9-9-85	-	-	SPUD 2:15pm TRIP OUT TO RUN PIPE 11 JOINTS 8 5/8" K-55 24#, 467' CEMENT WITH 130 SACKS HALCO LITE 3% CaCl <sub>2</sub> AND 100 SACKS CLASS H 3% CaCl <sub>2</sub>
9-10-85	485'	485'	WOC BEGIN DRILLING AT 7:15pm
9-11-85	1525'	1040'	LOST CIRCULATION 1430', 40 BBLS
9-12-85	3058'	1533'	TRIP OUT FOR BIT AT 3152' DEV. 1/2° RESUME DRILLING AT 5:45 pm
9-13-85	3711'	653'	DRILLING
9-14-85	4484'	773'	LOST CIRCULATION 4689' REGAINED IN 30 MINUTES
9-15-85	5026'	542'	TD 5300' AT 9:15pm, CIRCULATE 1 1/2 HOURS, SHORT TRIP 15 STANDS, CIRCULATE 2 HOURS DEV. 2°
9-16-85	5300	274'	LOGGING

**CONFIDENTIAL**

OCT 07 1985  
State Geological Survey  
WICHITA BRANCH

SAMPLE DESCRIPTIONS  
(NOT LAGGED)

- 3090-4020 LS-60% off white, white, buff, grey brown, crypto-fine xln, firm-hard, dense, lithic, chalky, some grainy, trace dolomitic  
SH-40% red orange, maroon, medium-dark grey, firm, massive, blocky, fissile, calcareous & micromicaceous in part free pyrite
- 4020-4050 LS-80% off white, white, buff, crypto-very fine xln, firm-hard, dense, lithic, chalky, trace oolimoldic good porosity  
SH-20% red orange, maroon, medium-dark grey, firm, massive, blocky, fissile, calcareous & micromicaceous in part
- 4050-4080 LS-70% off white, white, buff, medium grey, crypto-very fine xln, firm-hard, dense, lithic, trace arenaceous, silty in part  
SH-30% red orange, maroon, medium-dark grey, firm, massive, blocky, fissile, calcareous & micromicaceous in part
- 4080-4110 LS-60% white, off white, buff, medium grey, crypto-very fine xln, firm-hard, dense, lithic, chalky, some grainy  
SH-40% red orange, maroon, medium-dark grey, firm, massive, blocky, fissile, calcareous & micromicaceous in part free pyrite
- 4110-4140 LS-80% white, off white, buff, medium grey, crypto-very fine xln, firm-hard, dense, lithic, chalky, some grainy  
SH-20% red orange, maroon, medium-dark grey, firm, massive, blocky, fissile, flakey, calcareous & micromicaceous in part
- 4140-4170 LS-70% off white, white, buff, medium grey, crypto-fine xln, firm-hard, dense, lithic, chalky, trace arenaceous, some grainy
- 4170-4200 LS-70% off white, white, buff, medium grey, crypto-fine xln, firm-hard, dense, lithic, chalky, trace arenaceous, some grainy  
SH-30% red orange, maroon, medium-dark grey, firm, massive, blocky, fissile, flakey, calcareous & micromicaceous in part
- 4200-4230 LS-70% white, off white, buff, light grey, crypto-very fine xln, firm-hard, dense, lithic, chalky  
SH-30% red orange, maroon, medium-dark grey, firm, massive, blocky, fissile, flakey, calcareous & micromicaceous in part free pyrite

CONFIDENTIAL  
OCT 07 1985  
State Geological Survey  
WICHITA BRANCH

- 4230-4260 LS-80% white, off white, light grey, crypto-very fine xln, firm-hard, dense, lithic, chalky, some arenaceous, trace oolitic round-white  
SH-20% red orange, maroon, medium-dark grey, firm, massive, blocky, fissile, flakey, calcareous & micromicaceous in part
- CONFIDENTIAL.**
- 4260-4290 LS-10% white, off white, light grey, crypto-very fine xln, firm-hard, dense, lithic, chalky, trace arenaceous  
Poor sample 90% cavings
- 4290-4320 LS-10% white, off white, buff, tan, light grey, crypto-very fine xln, firm-hard, dense, lithic, chalky, some arenaceous  
Poor sample 90% cavings
- 4320-4350 LS-20% white, off white, buff, brown grey, crypto-very fine xln, firm-very hard, dense, lithic, chalky, trace oolitic round-white, some cherty  
Poor sample 80% cavings
- 4350-4380 LS-10% white, off white, buff, crypto-microxln, firm-hard, dense, lithic, chalky  
Poor sample 90% cavings
- 4380-4410 LS-100% off white, light grey, buff, grey brown, mottled, crypto-microxln, firm-hard, dense, lithic, some argillaceous, free pyrite  
Trace SH-medium-dark grey, firm, flakey, calcareous & micromicaceous in part
- 4410-4440 LS-100% off white, light grey, brown grey, buff, white, crypto-microxln, firm-hard, dense, lithic, chalky, some argillaceous-silty, trace pyritic  
Trace SH-medium-dark grey, firm, flakey, calcareous & micromicaceous in part free pyrite  
FOSS-fisulinid
- 4440-4470 LS-100% off white, light-medium grey, buff, mottled, crypto-microxln, firm-hard, dense, lithic, becoming more argillaceous, trace oolitic round-white  
Trace SH-medium-dark grey, firm, flakey, calcareous & micromicaceous in part
- 4470-4500 LS-100% off white, white, light-medium grey, mottled, crypto-very fine xln, firm-hard, dense, lithic, chalky, argillaceous in part, some silty, trace oolitic round-white  
Trace SH-medium-dark grey, firm, flakey, calcareous & micromicaceous in part free pyrite

OCT 07 1985  
State Geological Survey  
WICHITA BRANCH

CONFIDENTIAL

1-16-43W

- 4500-4530 LS-50% off white, buff, white, light grey, crypto-microxln, firm-hard, dense, lithic, chalky  
Trace SH-medium-dark grey, firm, flakey, calcareous & micromicaceous in part  
Poor sample 50% cavings
- 4530-4560 LS-40% off white, white, tan, buff, light grey, crypto-microxln, firm-hard, dense, lithic, chalky  
Trace SH-medium-dark grey, firm, flakey, calcareous & micromicaceous in part  
Poor sample 60% cavings
- 4560-4590 LS-20% off white, white, buff, tan, crypto-microxln, firm-hard, dense, lithic, chalky  
Poor sample 80% cavings
- 4590-4620 LS-10% off white, buff, light grey, mottled, crypto-very fine xln, firm-hard, dense, lithic  
Poor sample 90% cavings
- 4620-4650 LS-5% off white, crypto-microxln, firm, dense, trace oolimoldic good porosity  
SH-15% medium-dark grey, firm, flakey, blocky, calcareous & micromicaceous in part  
Poor sample 80% cavings
- 4650-4680 LS-10% off white, buff, mottled, crypto-very fine xln, firm-hard, dense, lithic  
SH-10% medium-dark grey, firm, flakey, blocky, calcareous & micromicaceous in part  
Poor sample 80% cavings
- 4680-4710 LS-10% off white, buff, light-medium grey, crypto-very fine xln, firm-hard, dense, lithic, chalky, some argillaceous  
SH-10% medium-dark grey, firm, flakey, blocky, calcareous & micromicaceous in part  
Poor sample 80% cavings
- 4710-4740 LS-100% light-medium grey, off white, buff, mottled, crypto-microxln, firm-hard, dense, lithic, becoming more argillaceous, trace arenaceous  
Trace SH-medium-dark grey, firm, flakey, blocky, calcareous & micromicaceous in part
- 4740-4770 LS-100% light-dark grey, off white, brown grey, crypto-microxln, firm-very hard, dense, lithic argillaceous-very argillaceous, some silty

OCT 07 1995  
State Geological Survey  
WICHITA BRANCH

- 4770-4800 LS-90% light-dark grey, off white, brown grey, buff, crypto-microxln, firm-very hard, dense, lithic, trace oolitic round-buff, argillaceous-very argillaceous, some silty  
SH-10% medium-dark grey, black, firm, flakey, fissile, calcareous & micromicaceous in part
- 4800-4830 LS-90% buff, off white, medium-dark grey, crypto-very fine xln, firm-hard, dense, lithic, argillaceous in part  
SH-10% medium-dark grey, firm, flakey, blocky, calcareous & micromicaceous in part  
Poor sample abundant cavings
- 4830-4860 LS-10% buff, off white, grey brown, crypto-microxln, firm-hard, dense, lithic  
SH-5% medium-dark grey, firm, flakey, fissile, calcareous & micromicaceous in part  
Poor sample 85% cavings
- 4860-4890 LS-20% buff, off white, medium grey, crypto-microxln, firm-very hard, dense, lithic, argillaceous in part  
SH-5% medium-dark grey, firm, flakey, blocky, calcareous & micromicaceous in part  
Poor sample 75% cavings
- 4890-4920 LS-15% buff, tan, brown grey, crypto-microxln, firm-very hard, dense, lithic  
SH-5% medium-dark grey, firm, flakey, fissile, calcareous & micromicaceous in part  
Poor sample 80% cavings
- 4920-4950 LS-80% light-dark grey, buff, off white, crypto-microxln, firm-very hard, dense, lithic, becoming very argillaceous, some silty  
SH-20% medium-dark grey, black, firm, flakey, fissile, calcareous & micromicaceous in part  
free pyrite
- 4950-4980 LS-80% light-dark grey, buff, off white, crypto-very fine xln, firm-very hard, dense, lithic, argillaceous-very argillaceous, some silty  
SH-20% medium-dark grey, black, firm, flakey, fissile, calcareous & micromicaceous in part  
Trace CHT-amber  
Trace FOSS-crinoid
- 4980-5010 LS-70% light-dark grey, buff, off white, crypto-very fine xln, firm-very hard, dense, lithic, argillaceous-very argillaceous in part, sm silty  
SH-30% medium-dark grey, black, firm, flakey, fissile, calcareous & micromicaceous in part  
free pyrite

CONFIDENTIAL

OCT 0 4 1985  
State Geological Survey  
WICHITA BRANCH

1-16-43W

5010-5040 LS-80% off white, tan, light-medium grey, crypto-very fine xln, firm-very hard, dense, lithic, trace oolitic round-buff  
SH-20% medium-dark grey, black, firm, flakey, fissile, calcareous & micromicaceous in part

5040-5050 NO SAMPLE

**CONFIDENTIAL**

5050-5060 LS-75% off white, tan, light-medium grey, crypto-very fine xln, firm-very hard, dense, lithic, argillaceous in part  
SH-25% medium-dark grey, black, firm, flakey, fissile, calcareous & micromicaceous in part, carbonaceous in part  
Trace CHT-amber

5060-5070 LS-70% off white, tan, light-medium grey, crypto-microxln, firm-very hard, dense, lithic, argillaceous in part  
SH-30% medium-dark grey, black, firm, flakey, fissile, calcareous & micromicaceous in part, carbonaceous in part free pyrite  
Abundant cavings

5070-5080 LS-80% off white, tan, light-medium grey, dark tan, crypto-microxln, firm-very hard, dense, lithic, argillaceous in part  
SH-20% medium-dark grey, black, firm, flakey, fissile, calcareous & micromicaceous in part  
Abundant cavings

5080-5090 LS-85% buff, grey brown, mottled, medium-dark grey, crypto-microxln, firm-very hard, dense, lithic, some argillaceous-silty  
SH-15% medium-dark grey, black, firm, flakey, fissile, calcareous & micromicaceous in part  
Abundant cavings

5090-5100 SH-60% medium-dark grey, black, firm, flakey, fissile, calcareous & micromicaceous in part, carbonaceous in part  
LS-40% buff, grey brown, mottled, medium-dark grey, crypto-microxln, firm-very hard, dense, lithic, some argillaceous-silty, trace pyritic

5100-5120 SH-80% medium-dark grey, black, grey green, firm, waxy, flakey, fissile, calcareous & micromicaceous in part, carbonaceous in part  
LS-20% buff, off white, crypto-medium xln, firm-very hard, dense, lithic,  
Trace COAL-black, brittle, bitumenous

OCT 07 1965  
State Geological Survey  
WICHITA BRANCH

- 5120-5130 SH-90% medium-dark grey, black, grey green, firm, waxy, flakey, fissile, calcareous & micromicaceous in part, carbonaceous in part  
 LS-10% buff, off white, crypto-medium xln, firm-very hard, dense, lithic  
 Trace SS-white, translucent, fine-medium grain, subangular-round, firm, calcareous, slightly glauconitic, trace pyritic, fair sorting, tight  
 No show
- CONFIDENTIAL.**
- 5130-5140 SH-90% medium-dark grey, black, grey green, firm, waxy, flakey, fissile, calcareous & micromicaceous in part, carbonaceous in part  
 LS-10% buff, tan, off white, crypto-microxln, firm-very hard, dense, lithic free pyrite  
 Trace SS-white, translucent, fine-medium grain, subangular-round, firm, calcareous, slightly glauconitic, fair sorting, tight No show
- 5140-5150 SH-90% medium-dark grey, black, grey green, firm, waxy, flakey, fissile, calcareous & micromicaceous in part, carbonaceous in part  
 LS-10% buff, tan, off white, crypto-microxln, firm-very hard, dense, lithic  
 Trace SS-white, translucent, fine-coarse grain, subangular-subround, firm-hard, calcareous, slightly glauconitic, poor sorting, tight  
 TRACE EVEN BRIGHT YELLOW FLUORESCENCE  
 SLOW PALE YELLOW STREAMING  
 UNEVEN FAINT YELLOW RING, DRY CUT
- 5150-5160 SH-95% medium-dark grey, black, grey green, firm, waxy, flakey, fissile, calcareous & micromicaceous in part, carbonaceous in part  
 LS-5% buff, off white, tan, crypto-microxln, firm-very hard, dense, lithic abundant free pyrite  
 Trace SS-white, translucent, fine-coarse grain, subangular-subround, firm-hard, calcareous, slightly glauconitic, poor sorting, tight  
 No show
- 5160-5170 SH-90% medium-dark grey, black, grey green, firm, waxy, flakey, fissile, calcareous & micromicaceous in part, carbonaceous in part, sm splintery  
 LS-5% off white, buff, mottled, crypto-medium xln, firm-very hard, dense, lithic abundant free pyrite  
 Trace SS-white, translucent, fine-coarse grain, subangular-subround, firm-hard, calcareous, slightly glauconitic, poor sorting, tight,  
 also translucent, clear, coarse-very coarse grain, angular-subangular, poor sorting, unconsolidated  
 No show

OCT 17 1965  
 State Geological Survey  
 WICHITA BRANCH

5170-5180 SH-90% medium-dark grey, black, grey green, firm, waxy, flakey, fissile, splintery, calcareous & micromicaceous in part, carbonaceous in part  
 LS-10% buff, off white, mottled, crypto-medium xln, firm-very hard, dense, lithic  
 Trace SS-white, translucent, fine grain, subround, firm, calcareous, slightly glauconitic, fair sorting, tight, also translucent, clear, coarse-very coarse grain, angular-subround, poor sorting, unconsolidated, some quartz overgrowth  
 TRACE EVEN BRIGHT YELLOW FLUORESCENCE  
 SLOW VERY FANT PALE YELLOW STREAMING  
 EVEN FAINT YELLOW GREEN RING, DRY CUT

5180-5190 SH-50% medium-dark grey, black, grey green, firm, waxy, flakey, fissile, splintery, calcareous & micromicaceous in part, carbonaceous in part  
 LS-50% off white, buff, dark tan, crypto-microxln, firm-very hard, dense, lithic, free pyrite  
 Trace SS-white, translucent, fine grain, subround, firm, calcareous, slightly glauconitic, fair sorting, tight also translucent, clear, coarse-very coarse grain, angular-subround, poor sorting, unconsolidated No show

**CONFIDENTIAL**

5190-5200 LS-60% off white, buff, dark tan, crypto-microxln, firm-very hard, dense, lithic,  
 SH-40% medium-dark grey, black, grey green, firm, waxy, flakey, fissile, splintery, calcareous & micromicaceous in part, carbonaceous in part  
 Trace SS-white, translucent, fine grain subround, firm, calcareous, slightly glauconitic, fair sorting, tight also translucent, clear, coarse-very coarse grain, angular-subround, poor sorting, unconsolidated  
 TRACE EVEN BRIGHT YELLOW FLUORESCENCE  
 SLOW FAINT PALE YELLOW STREAMING  
 EVEN MODERATE YELLOW GREEN RING, DRY CUT

OCT 07 1985  
 State Geological Survey  
 WICHITA BRANCH

5200-5230 LS-70% off white, buff, dark tan, crypto-microxln, firm-very hard, dense, lithic, some very arenaceous  
 SH-30% medium-dark grey, black, grey green, firm, waxy, flakey, fissile, splintery, calcareous & micromicaceous in part, carbonaceous in part

5230-5240 LS-60% off white, buff, dark tan, crypto-microxln, firm-hard, dense, lithic, also white, cryptoxln, firm, dense, very arenaceous  
 SH-40% medium-dark grey, black, grey green, firm, waxy, flakey, fissile, splintery, calcareous & micromicaceous in part, carbonaceous in part

- 5240-5250 SH-60% medium-dark grey, black, grey green, firm, waxy, flakey, fissile, splintery, calcareous & micromicaceous in part, carbonaceous in part  
LS-40% off white, buff, medium-dark tan, crypto-medium xln, firm-very hard, dense, lithic
- 5250-5260 SH-80% medium-dark grey, black, grey green, firm, waxy, flakey, fissile, splintery, calcareous & micromicaceous in part, carbonaceous in part  
LS-20% off white, buff, medium-dark tan, crypto-microxln, firm-very hard, dense, lithic, sm very arenaceous free pyrite
- 5260-5270 SH-85% medium-dark grey, black, grey green, firm, flakey, fissile, splintery, calcareous & micromicaceous in part, carbonaceous in part  
LS-15% off white, buff, mottled, crypto-medium xln, firm-very hard, dense, lithic, also off white-white, cryptoxln, firm, dense, very arenaceous
- 5270-5280 SH-80% medium-dark grey, black, grey green, firm, waxy, flakey, fissile, splintery, calcareous & micromicaceous in part, carbonaceous in part  
LS-20% off white, buff, medium-dark tan, grey brown, firm-very hard, dense, lithic, also off white-white, cryptoxln, firm, dense, very arenaceous
- 5280-5290 SH-80% medium-dark grey, black, grey green, firm, waxy, flakey, fissile, splintery, calcareous & micromicaceous in part, carbonaceous in part  
LS-20% off white, buff, grey brown, firm-very hard, dense, lithic, also white-off white, cryptoxln, firm, dense, very arenaceous
- 5290-5300 SH-70% medium-dark grey, black, grey green, firm, waxy, flakey, fissile, splintery, calcareous & micromicaceous in part, carbonaceous in part  
LS-30% off white, buff, grey brown, firm-very hard, dense, lithic, also white-off white, cryptoxln, firm, dense, very arenaceous

**CONFIDENTIAL.**

OCT 07 1985

State Geological Survey  
WICHITA BRANCH

1-16-43W

MUD RECORD

<u>DEPTH</u>	<u>WEIGHT</u>	<u>VISCOSITY</u>	<u>pH</u>	<u>WATER LOSS</u>	<u>SALT</u>	<u>LCM</u>
4664	9.3	31	8.0	22.0	10,000	1#
5000	9.0	45	11.5	9.5	7,000	3#

BIT RECORD

<u>NO.</u>	<u>MAKE</u>	<u>TYPE</u>	<u>SIZE</u>	<u>DEPTH OUT</u>	<u>FOOTAGE</u>	<u>HOURS</u>
1	SEC	S-33	12 1/4	485	485	2 1/2
1	STC	F-2-H	7 7/8	3152	2667	29 1/2
2	STC	F-3	7 7/8	5300	2158	68 1/4

**CONFIDENTIAL**

DRILLING PARAMETERS

<u>DEPTH</u>	<u>WEIGHT ON BIT</u>	<u>REVOLUTIONS</u>	<u>PRESSURE</u>
1450	20/25	75	650
2715	25/30	80	800
3375	35/40	80	800
3935	40	80	800
4689	40	75	800
5200	40	75	650

OCT 07 1985  
State Geological Survey  
WICHITA BRANCH