

DST REPORT

GENERAL INFORMATION

DATE : 5-11-95 TICKET : 21256
CUSTOMER : MCCOY PETROLEUM CORP LEASE : BARBER
WELL : #1-1 TEST: 1 GEOLOGIST: CALLEWAERT
ELEVATION: 2301 KB FORMATION: CHEROKEE SAND
SECTION : 1 TOWNSHIP : 17S
RANGE : 22W COUNTY: NESS STATE : KS
GAUGE SN#: 10270 RANGE : 4150 CLOCK : 12

WELL INFORMATION

PERFORATION INTERVAL FROM: 4240.00 ft TO: 4296.00 ft TVD: 4350.0 ft
DEPTH OF SELECTIVE ZONE: TEST TYPE: OIL
DEPTH OF RECORDERS: 4243.0 ft 4246.0 ft
TEMPERATURE: 116.0

DRILL COLLAR LENGTH: 240.0 ft I.D.: 2.200 in
WEIGHT PIPE LENGTH : 0.0 ft I.D.: 0.000 in
DRILL PIPE LENGTH : 3965.0 ft I.D.: 3.800 in
TEST TOOL LENGTH : 35.0 ft TOOL SIZE : 5.500 in
ANCHOR LENGTH : 56.0 ft ANCHOR SIZE: 5.500 in
SURFACE CHOKE SIZE : 0.750 in BOTTOM CHOKE SIZE: 0.750 in
MAIN HOLE SIZE : 7.875 in TOOL JOINT SIZE : 4.5XH
PACKER DEPTH: 4235.0 ft SIZE: 6.630 in
PACKER DEPTH: 4240.0 ft SIZE: 6.630 in
PACKER DEPTH: 4295.0 ft SIZE: 6.630 in
PACKER DEPTH: 4301.0 ft SIZE: 6.630 in

MUD INFORMATION

DRILLING CON. : MALLARD DRLG #2
MUD TYPE : CHEMICAL VISCOSITY : 49.00 cp
WEIGHT : 9.300 ppg WATER LOSS: 9.800 cc
CHLORIDES : 0 ppm
JARS-MAKE : WTC SERIAL NUMBER: 411
DID WELL FLOW?: NO REVERSED OUT?: NO

COMMENTS

Comment

INITIAL FLOW PERIOD-WEAK BLOW, DIED IN 20 MINUTES.
FINAL FLOW PERIOD-NO BLOW.

DST REPORT (CONTINUED)

FLUID RECOVERY

Feet of Fluid	% Oil	% Gas	% Water	% Mud	Comments
5.0	0.0	0.0	0.0	100.0	MUD

RATE INFORMATION

OIL VOLUME:	0.0000	STB		TOTAL FLOW TIME:	60.0000	min.
GAS VOLUME:	0.0000	SCF		AVERAGE OIL RATE:	0.0000	STB/D
MUD VOLUME:	0.0235	STB		AVERAGE WATER RATE:	0.0000	STB/D
WATER VOLUME:	0.0000	STB				
TOTAL FLUID :	0.0235	STB				

FIELD TIME & PRESSURE INFORMATION

INITIAL HYDROSTATIC PRESSURE: 2170.00

Description	Duration	p1	p End
INITIAL FLOW	30.00	31.00	31.00
INITIAL SHUT-IN	30.00		62.00
FINAL FLOW	30.00	31.00	31.00
FINAL SHUT-IN	30.00		41.00

FINAL HYDROSTATIC PRESSURE: 2045.00

OFFICE TIME & PRESSURE INFORMATION

INITIAL HYDROSTATIC PRESSURE: 2183.00

Description	Duration	p1	p End
INITIAL FLOW	30.00	63.00	41.00
INITIAL SHUT-IN	27.00		57.00
FINAL FLOW	30.00	41.00	41.00
FINAL SHUT-IN	30.00		48.00

FINAL HYDROSTATIC PRESSURE: 2075.00

PRESSURE TRANSIENT REPORT

GENERAL INFORMATION

DATE	: 5-11-95	TICKET	: 21256
CUSTOMER	: MCCOY PETROLEUM CORP	LEASE	: BARBER
WELL	: #1-1	TEST: 1	GEOLOGIST: CALLEWAERT
ELEVATION	: 2301 KB	FORMATION:	CHEROKEE SAND
SECTION	: 1	TOWNSHIP	: 17S
RANGE	: 22W	COUNTY:	NESS
Gauge SN#:	10270	RANGE	: 4150
		STATE	: KS
		CLOCK	: 12

INITIAL FLOW

<u>Time (min)</u>	<u>Pressure</u>	<u>Delta P</u>
0.00	63.00	63.00
5.00	44.00	-19.00
10.00	41.00	-3.00
15.00	41.00	0.00
20.00	41.00	0.00
25.00	41.00	0.00
30.00	41.00	0.00

INITIAL SHUT IN

<u>Time (min)</u>	<u>Pressure</u>	<u>Delta P</u>	<u>Horner T</u>
3.00	41.00	41.00	0.00
6.00	41.00	0.00	0.00
9.00	41.00	0.00	0.00
12.00	44.00	3.00	0.00
15.00	48.00	4.00	0.00
18.00	51.00	3.00	0.00
21.00	53.00	2.00	0.00
24.00	55.00	2.00	0.00
27.00	57.00	2.00	0.00

FINAL FLOW

<u>Time (min)</u>	<u>Pressure</u>	<u>Delta P</u>
0.00	41.00	41.00
5.00	41.00	0.00

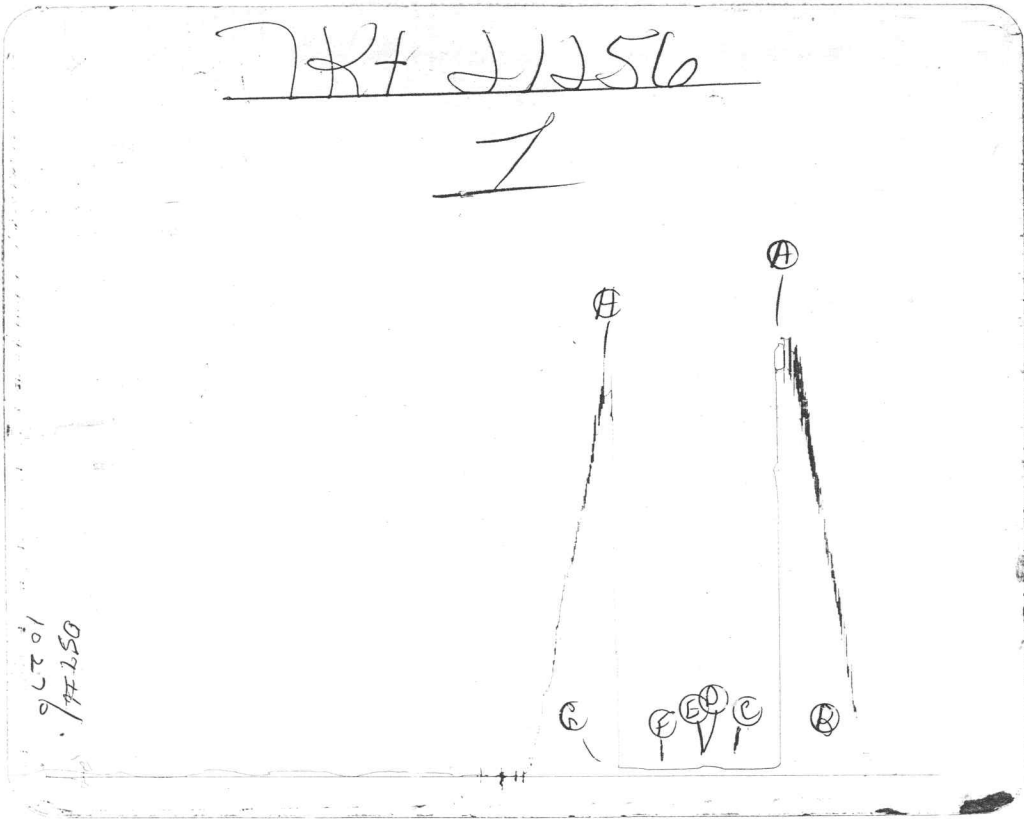
PRESSURE TRANSIENT REPORT (CONTINUED)

FINAL FLOW (CONTINUED)

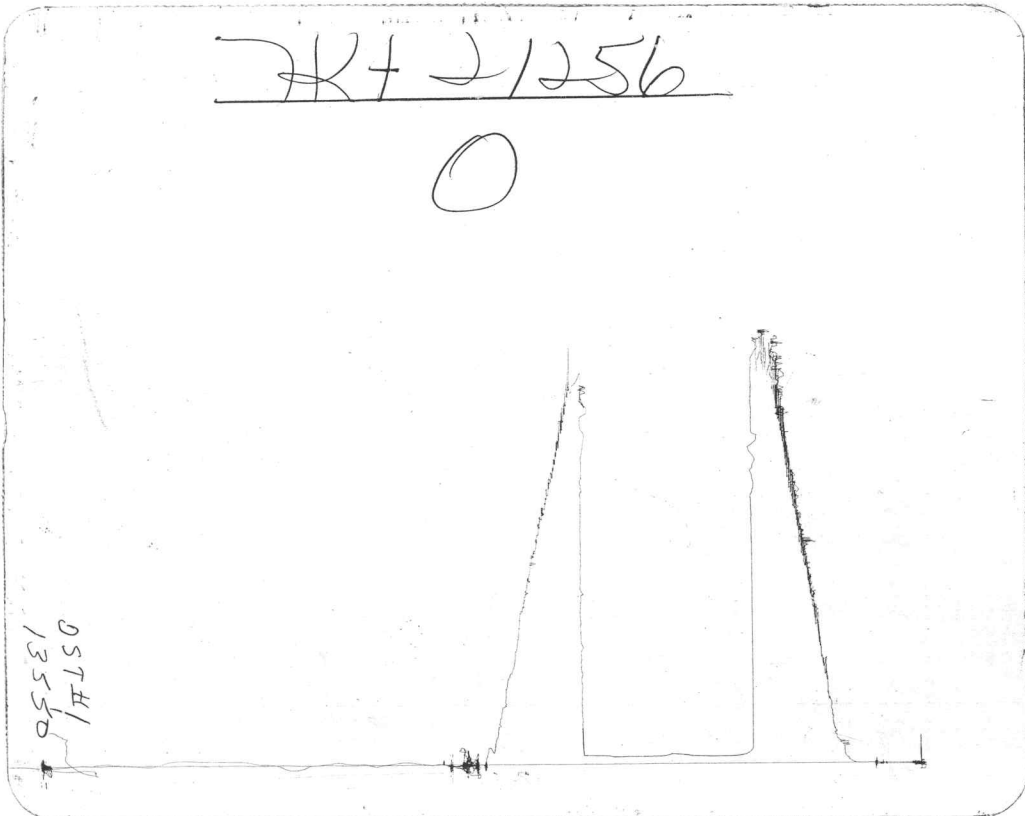
<u>Time (min)</u>	<u>Pressure</u>	<u>Delta P</u>
10.00	41.00	0.00
15.00	41.00	0.00
20.00	41.00	0.00
25.00	41.00	0.00
30.00	41.00	0.00

FINAL SHUT IN

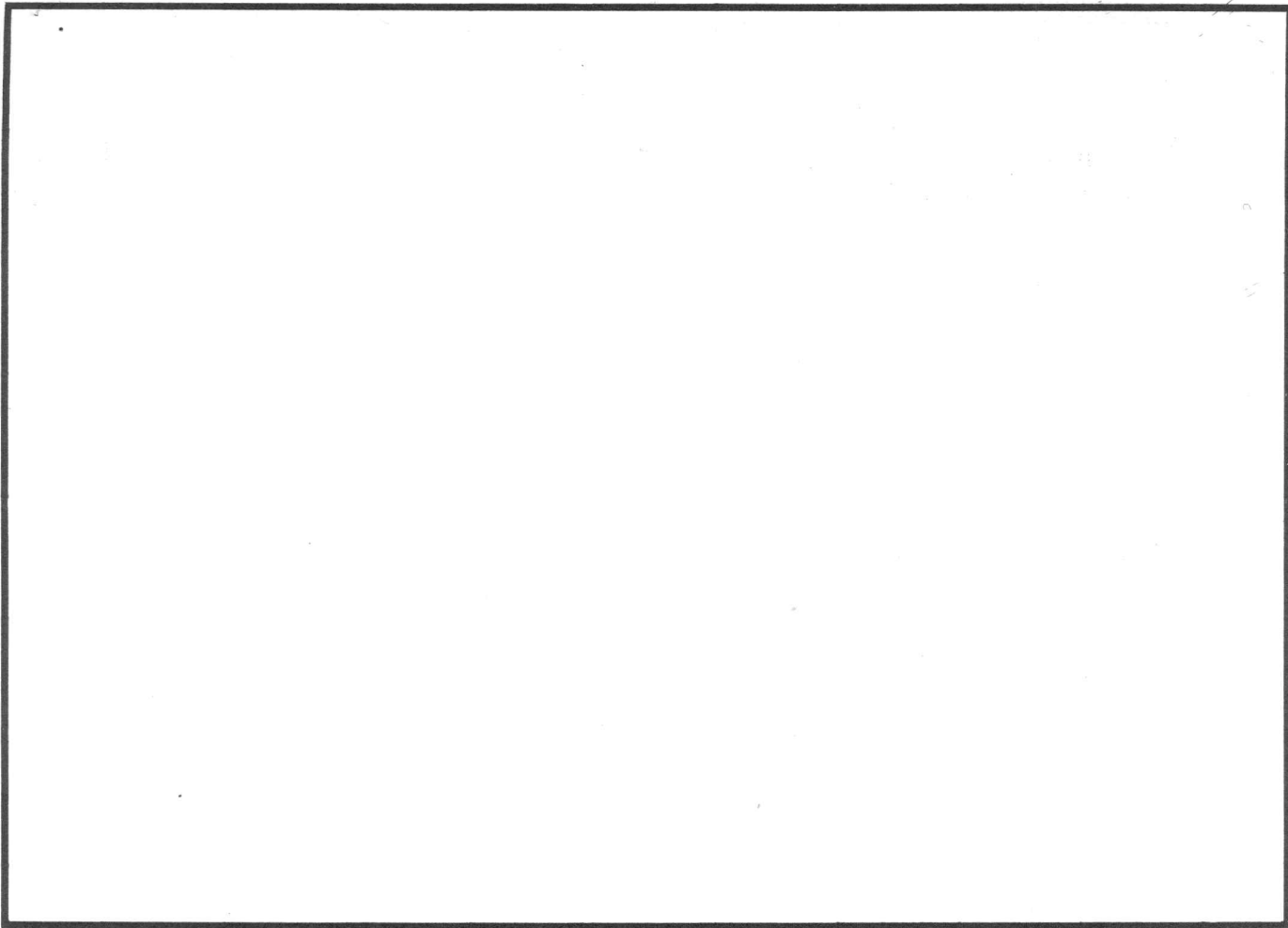
<u>Time (min)</u>	<u>Pressure</u>	<u>Delta P</u>	<u>Horner T</u>
3.00	41.00	41.00	0.00
6.00	41.00	0.00	0.00
9.00	41.00	0.00	0.00
12.00	41.00	0.00	0.00
15.00	43.00	2.00	0.00
18.00	45.00	2.00	0.00
21.00	47.00	2.00	0.00
24.00	48.00	1.00	0.00
27.00	48.00	0.00	0.00
30.00	48.00	0.00	0.00



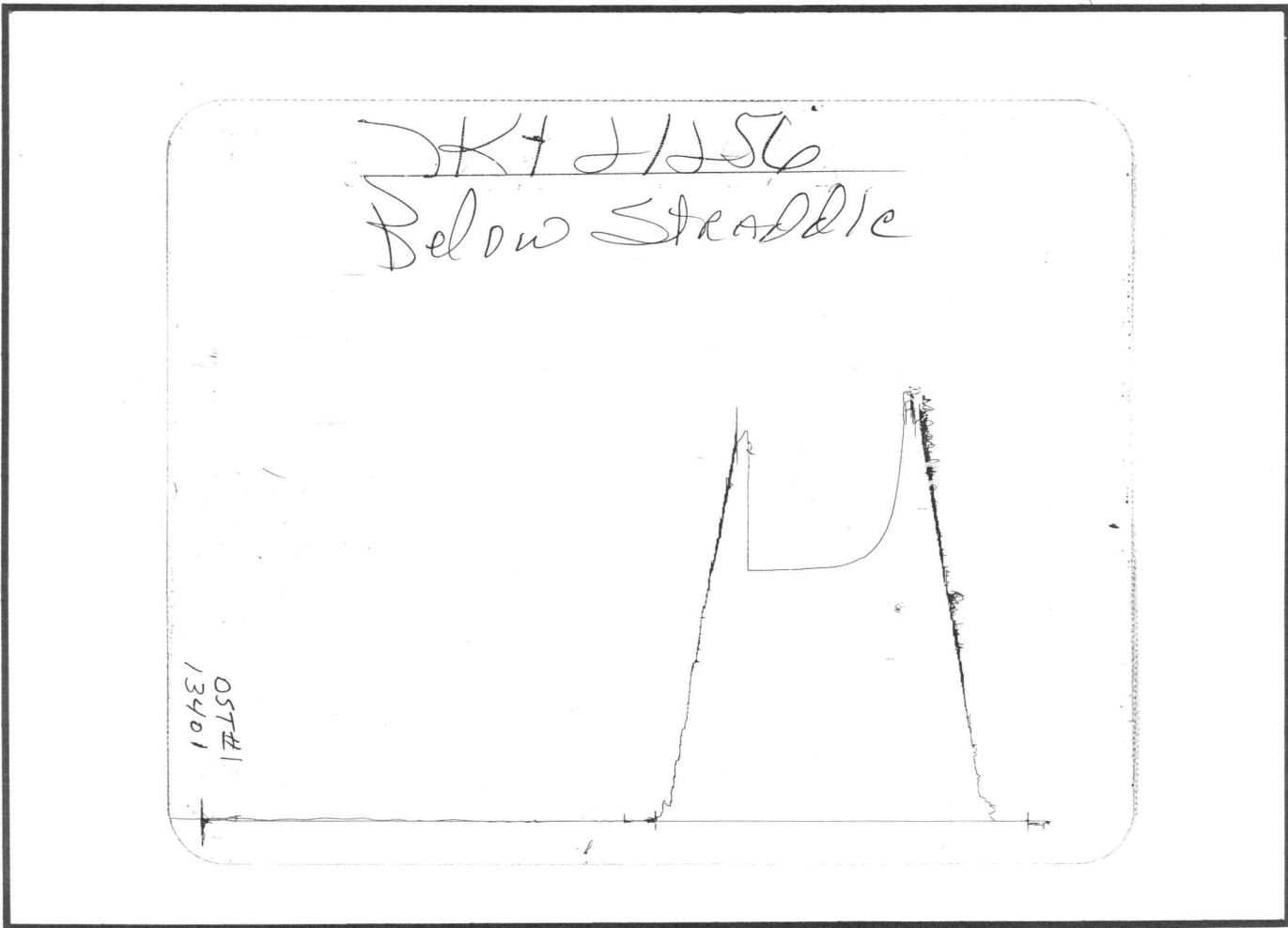
Inside Recorder



Outside Recorder



Inside Recorder



Outside Recorder

DST REPORT

GENERAL INFORMATION

DATE : 5-11-95 TICKET : 21257
CUSTOMER : MCCOY PETROLEUM CORP LEASE : BARBER
WELL : #1-1 TEST: 2 GEOLOGIST: CALLEWAERT
ELEVATION: 2301 KB FORMATION: FORT SCOTT
SECTION : 1 TOWNSHIP : 17S
RANGE : 22W COUNTY: NESS STATE : KS
GAUGE SN#: 10270 RANGE : 4150 CLOCK : 12

WELL INFORMATION

PERFORATION INTERVAL FROM: 4170.00 ft TO: 4206.00 ft TVD: 4350.0 ft
DEPTH OF SELECTIVE ZONE: TEST TYPE: OIL
DEPTH OF RECORDERS: 4174.0 ft 4177.0 ft
TEMPERATURE: 115.0

DRILL COLLAR LENGTH: 240.0 ft I.D.: 2.200 in
WEIGHT PIPE LENGTH : 0.0 ft I.D.: 0.000 in
DRILL PIPE LENGTH : 3895.0 ft I.D.: 3.800 in
TEST TOOL LENGTH : 35.0 ft TOOL SIZE : 5.500 in
ANCHOR LENGTH : 36.0 ft ANCHOR SIZE: 5.500 in
SURFACE CHOKE SIZE : 0.750 in BOTTOM CHOKE SIZE: 0.750 in
MAIN HOLE SIZE : 7.875 in TOOL JOINT SIZE : 4.5XH
PACKER DEPTH: 4165.0 ft SIZE: 6.630 in
PACKER DEPTH: 4170.0 ft SIZE: 6.630 in
PACKER DEPTH: 4206.0 ft SIZE: 6.630 in
PACKER DEPTH: 4201.0 ft SIZE: 6.630 in

MUD INFORMATION

DRILLING CON. : MALLARD DRLG #2
MUD TYPE : CHEMICAL VISCOSITY : 49.00 cp
WEIGHT : 9.300 ppg WATER LOSS: 9.800 cc
CHLORIDES : 0 ppm
JARS-MAKE : WTC SERIAL NUMBER: 422
DID WELL FLOW?: NO REVERSED OUT?: NO

COMMENTS

Comment

INITIAL FLOW PERIOD-WEAK BLOW THROUGHOUT 1/2 TO 2
INCH BLOW. FINAL FLOW PERIOD-WEAK BUILDING TO A
STRONG BLOW IN 25 MINUTES. 2 INCHES TO BOTTOM OF

DST REPORT (CONTINUED)

COMMENTS (CONTINUED)

Comment

BUCKET.

FLUID RECOVERY

Feet of Fluid	% Oil	% Gas	% Water	% Mud	Comments
0.0	0.0	0.0	0.0	0.0	560FT GAS ABOVE FLUID
65.0	100.0	0.0	0.0	0.0	CLEAN GASSY OIL
0.0	0.0	0.0	0.0	0.0	GRAVITY 40
255.0	45.0	30.0	0.0	25.0	GASSY MUDDY OIL

RATE INFORMATION

OIL VOLUME:	1.5141 STB	TOTAL FLOW TIME:	120.0000 min.
GAS VOLUME:	2.2551 SCF	AVERAGE OIL RATE:	22.1858 STB/D
MUD VOLUME:	0.3347 STB	AVERAGE WATER RATE:	0.0000 STB/D
WATER VOLUME:	0.0000 STB		
TOTAL FLUID :	1.8488 STB		

FIELD TIME & PRESSURE INFORMATION

INITIAL HYDROSTATIC PRESSURE: 2212.00

Description	Duration	p1	p End
INITIAL FLOW	30.00	52.00	72.00
INITIAL SHUT-IN	60.00		1236.00
FINAL FLOW	90.00	93.00	124.00
FINAL SHUT-IN	120.00		1215.00

FINAL HYDROSTATIC PRESSURE: 2129.00

DST REPORT (CONTINUED)

OFFICE TIME & PRESSURE INFORMATION

INITIAL HYDROSTATIC PRESSURE: 2244.00

<u>Description</u>	<u>Duration</u>	<u>p1</u>	<u>p End</u>
INITIAL FLOW	25.00	56.00	80.00
INITIAL SHUT-IN	60.00		1242.00
FINAL FLOW	95.00	108.00	131.00
FINAL SHUT-IN	120.00		1209.00

FINAL HYDROSTATIC PRESSURE: 2029.00

PRESSURE TRANSIENT REPORT

GENERAL INFORMATION

DATE : 5-11-95	TICKET : 21257
CUSTOMER : MCCOY PETROLEUM CORP	LEASE : BARBER
WELL : #1-1 TEST: 2	GEOLOGIST: CALLEWAERT
ELEVATION: 2301 KB	FORMATION: FORT SCOTT
SECTION : 1	TOWNSHIP : 17S
RANGE : 22W COUNTY: NESS	STATE : KS
GAUGE SN#: 10270 RANGE : 4150	CLOCK : 12

INITIAL FLOW

Time (min)	Pressure	Delta P
0.00	56.00	56.00
5.00	56.00	0.00
10.00	56.00	0.00
15.00	62.00	6.00
20.00	71.00	9.00
25.00	80.00	9.00

INITIAL SHUT IN

Time (min)	Pressure	Delta P	Horner T
3.00	208.00	208.00	9.33
6.00	464.00	256.00	5.17
9.00	755.00	291.00	3.78
12.00	893.00	138.00	3.08
15.00	962.00	69.00	2.67
18.00	1014.00	52.00	2.39
21.00	1054.00	40.00	2.19
24.00	1085.00	31.00	2.04
27.00	1111.00	26.00	1.93
30.00	1132.00	21.00	1.83
33.00	1149.00	17.00	1.76
36.00	1167.00	18.00	1.69
39.00	1180.00	13.00	1.64
42.00	1191.00	11.00	1.60
45.00	1203.00	12.00	1.56
48.00	1211.00	8.00	1.52
51.00	1218.00	7.00	1.49
54.00	1226.00	8.00	1.46
57.00	1234.00	8.00	1.44
60.00	1242.00	8.00	1.42

PRESSURE TRANSIENT REPORT (CONTINUED)

FINAL FLOW

Time (min)	Pressure	Delta P
0.00	108.00	108.00
5.00	108.00	0.00
10.00	110.00	2.00
15.00	115.00	5.00
20.00	119.00	4.00
25.00	120.00	1.00
30.00	121.00	1.00
35.00	121.00	0.00
40.00	121.00	0.00
45.00	121.00	0.00
50.00	122.00	1.00
55.00	122.00	0.00
60.00	122.00	0.00
65.00	123.00	1.00
70.00	124.00	1.00
75.00	125.00	1.00
80.00	126.00	1.00
85.00	127.00	1.00
90.00	129.00	2.00
95.00	131.00	2.00

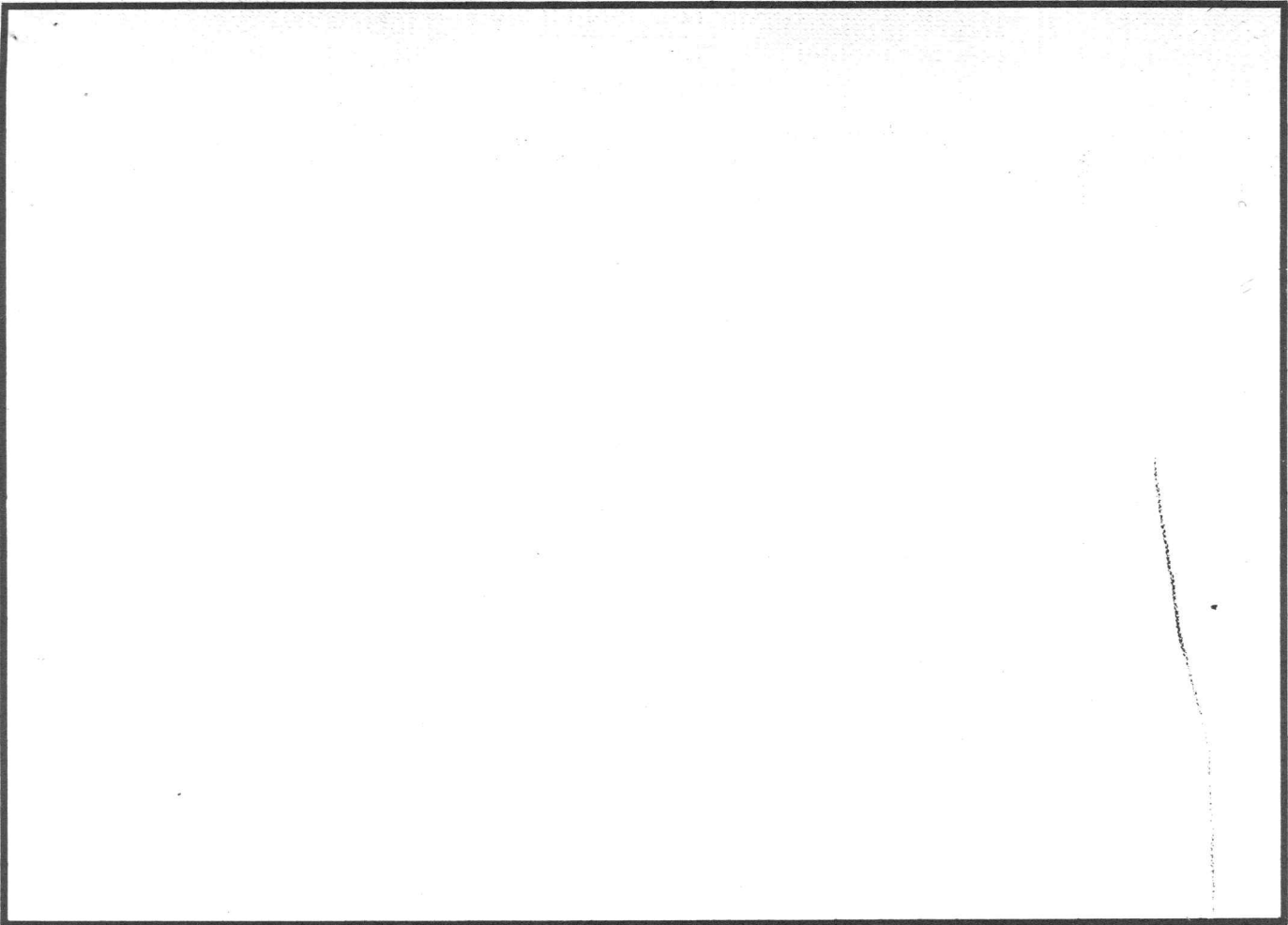
FINAL SHUT IN

Time (min)	Pressure	Delta P	Horner T
3.00	260.00	260.00	32.67
6.00	468.00	208.00	16.83
9.00	640.00	172.00	11.56
12.00	772.00	132.00	8.92
15.00	849.00	77.00	7.33
18.00	897.00	48.00	6.28
21.00	940.00	43.00	5.52
24.00	966.00	26.00	4.96
27.00	997.00	31.00	4.52
30.00	1023.00	26.00	4.17
33.00	1041.00	18.00	3.88
36.00	1060.00	19.00	3.64
39.00	1075.00	15.00	3.44
42.00	1089.00	14.00	3.26
45.00	1101.00	12.00	3.11
48.00	1112.00	11.00	2.98
51.00	1119.00	7.00	2.86
54.00	1129.00	10.00	2.76

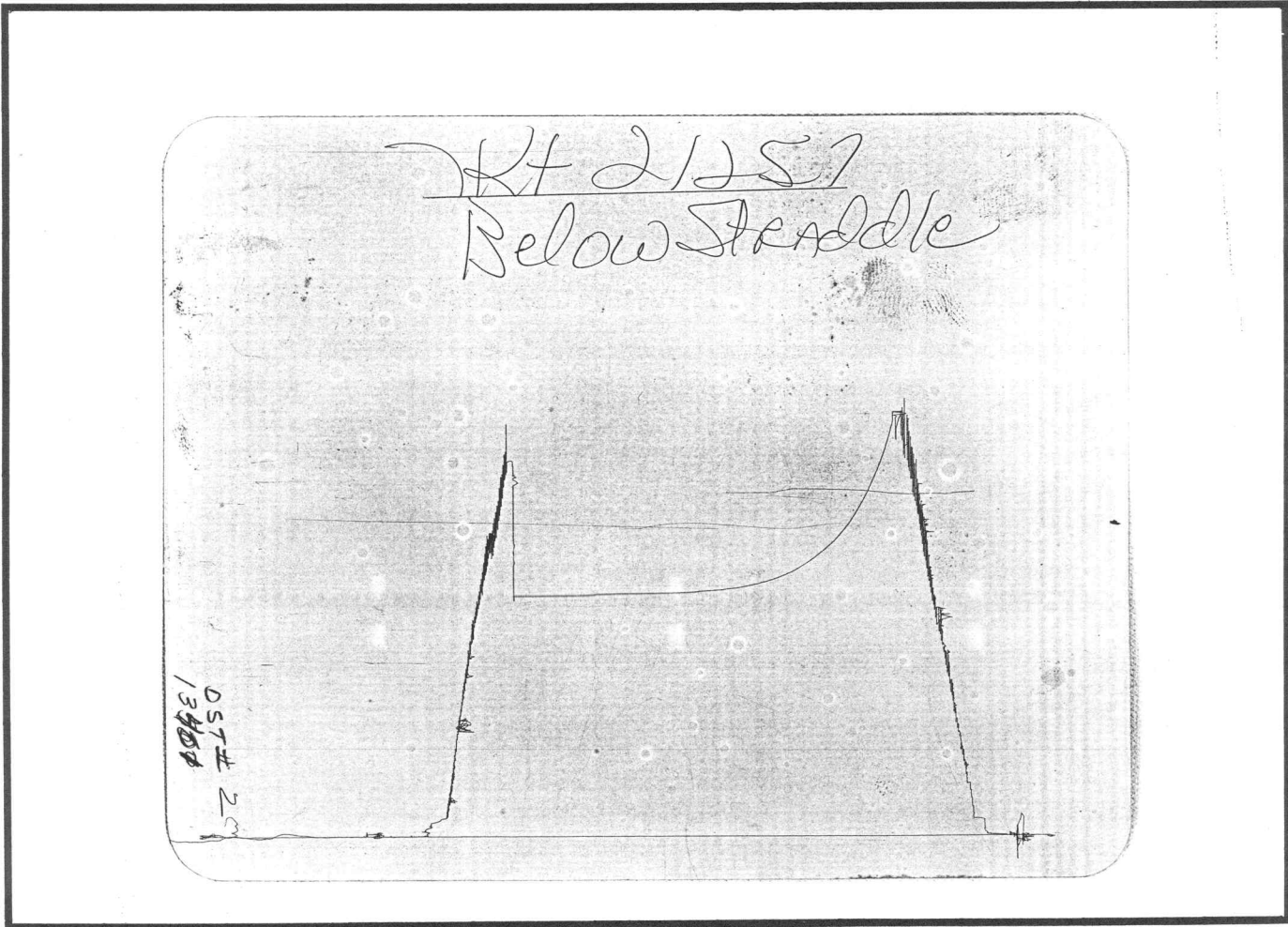
PRESSURE TRANSIENT REPORT (CONTINUED)

FINAL SHUT IN (CONTINUED)

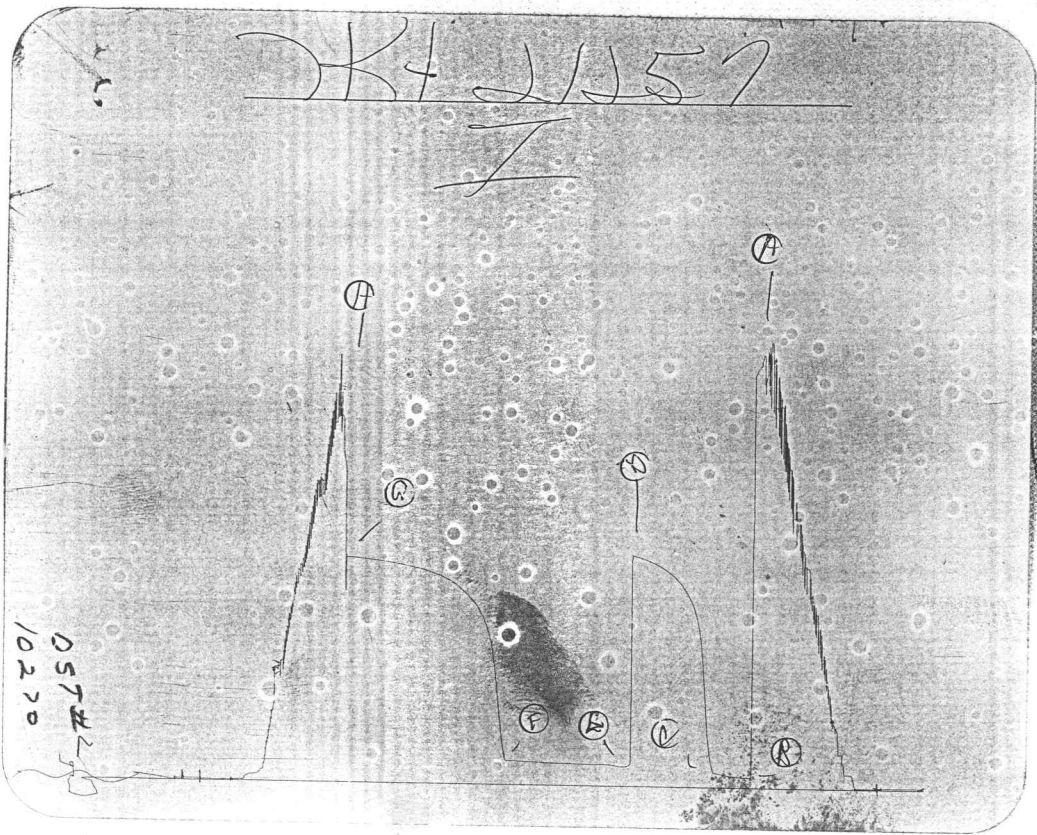
<u>Time (min)</u>	<u>Pressure</u>	<u>Delta P</u>	<u>Horner T</u>
57.00	1135.00	6.00	2.67
60.00	1145.00	10.00	2.58
63.00	1149.00	4.00	2.51
66.00	1156.00	7.00	2.44
69.00	1161.00	5.00	2.38
72.00	1165.00	4.00	2.32
75.00	1169.00	4.00	2.27
78.00	1172.00	3.00	2.22
81.00	1176.00	4.00	2.17
84.00	1180.00	4.00	2.13
87.00	1185.00	5.00	2.09
90.00	1187.00	2.00	2.06
93.00	1190.00	3.00	2.02
96.00	1192.00	2.00	1.99
99.00	1194.00	2.00	1.96
102.00	1196.00	2.00	1.93
105.00	1198.00	2.00	1.90
108.00	1200.00	2.00	1.88
111.00	1202.00	2.00	1.86
114.00	1205.00	3.00	1.83
117.00	1207.00	2.00	1.81
120.00	1209.00	2.00	1.79



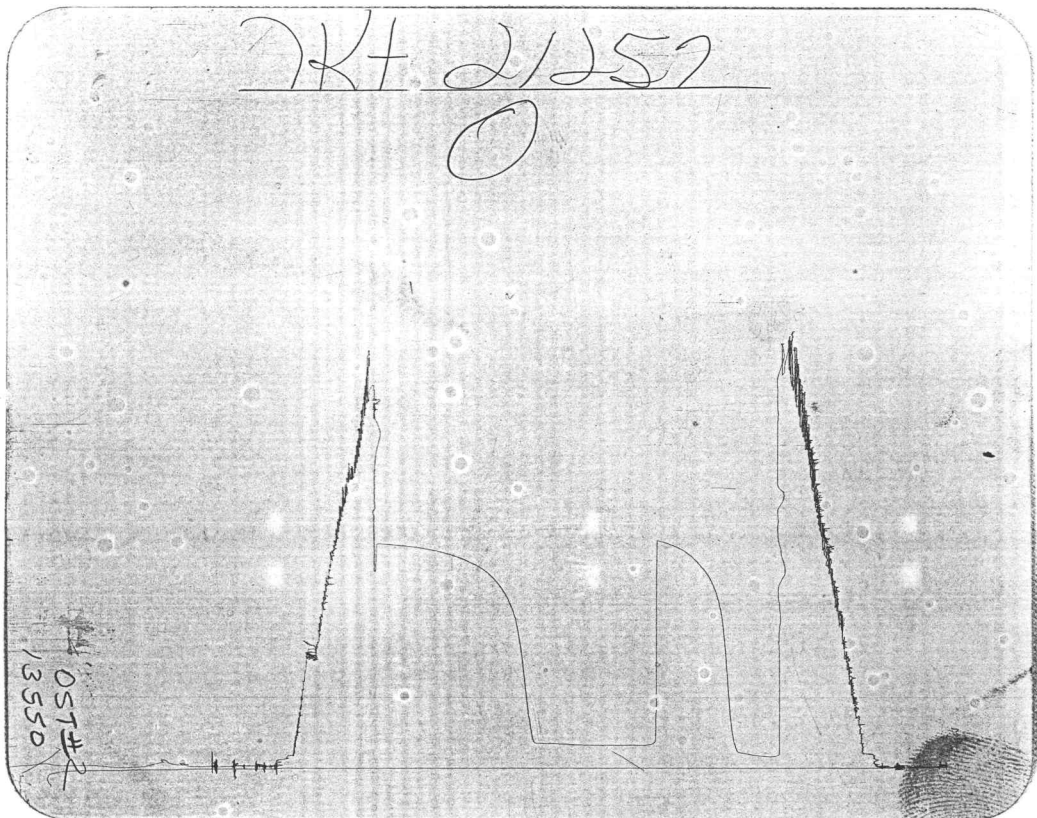
Inside Recorder



Outside Recorder



Inside Recorder



Outside Recorder