

WELL LOG BUREAU - KANSAS GEOLOGICAL SOCIETY.
412 Union National Bank Bldg, Wichita, Kansas.

TRANSWESTERN OIL CO.
Susan Dougherty No. 1.

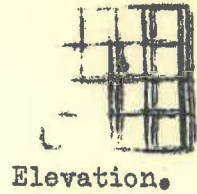
Sec 33 T. 17 R. 10W
SWc NE

Total Depth. 3282
Comm. 3-18-39 Comp. 4-11-39
Shot or Treated. 2000 gal.
Contractor. Iron Drilling Co.
Issued. 5-13-39

County Ellsworth

CASING.

10 3/4" 266'
7" 3270'



Elevation.

Production. Pot. 1718 B.

Figures Indicate Bottom of Formations.

surface	40	lime hard	3049
red bed and shale	195	lime porous	3097
sand	214	shale	3112
shells and iron	245	lime	3142
iron pyrite	278	lime and stks of	
shale and shells	332	shale	3210
red bed	416	lime	3253
red bed and shale	521	Cong. and chert	3266
anhydrite	542	lime	3270
red bed and shale	752	lime hrd tight	3274
shale and shells	996	lime soft	3276 with sh oil
salt and shells	1139	lime soft	3280 with good sh oil
salt	1190	cherty lime	3282 no increase in
shale	1231	Total Depth.	oil
shale and shells	1285		
shale	1305		
lime hard	1346	Top conglomerate	3259
lime and shale	1383	Top Arbuckle	3269
broken lime	1515		
shale and lime	1588		
lime and shells.	1651		
sticky shale and lime	1675		
lime	1813		
lime and shale	1867		
shale and shells	1947		
broken lime and shale	2018		
lime and shale	2086		
sticky shale and shells	2349		
shale and broken lime	2484		
lime and shale	2538		
lime	2753		
lime and shale	2795		
lime	2850		
shale	2888		
shale and broken lime	2923		
lime soft	2933		
lime	3019		
porous lime	3029		

Hole filled up 200' in 8 hours.