

Rupe Oil Company

1 Schepmann

OPERATOR

NO.

FARM

Ellsworth

27 17s 10w

SE NW NW

COUNTY

S T R

LOCATION

ELEVATION: 1836 gr



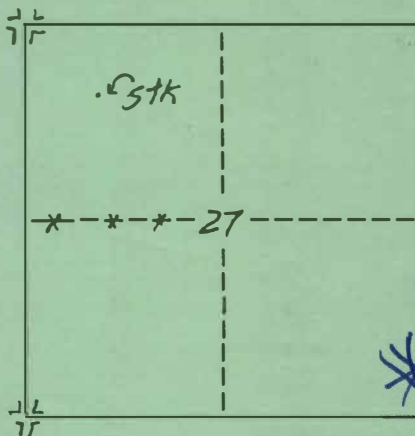
Rupe Oil Company, Inc.  
 P.O. Box 2273  
 Wichita, Kansas 67201

*COPY* JUN 11 1981

AUTHORIZED BY: Bill Clement

PHONE # 262-3748

SCALE: 2" = 1 MILE



5 1/2' stk,  
 level wheat  
Found old stake  
lying down  
nearby

FLAG from W.

\* staked  
 couldn't find  
 "old staking"

TOTAL \$ 145.00  
~~\$145.00~~

John Cecil 6/11/81

6-8-81

DATE

1 mi. S. & 1 mi. E.  
 to Bushton

L.D.

13870  
LAUGHLIN-SIMMONS & CO. OF KANSAS, INC.

OIL FIELD SURVEYING  
1337 NORTH MERIDIAN, SUITE 2  
WICHITA, KANSAS 67203

(316) 943-5351

KW1224803

INVOICE NO.

12-27-80 ✓

DATE

Ellsworth

COUNTY

27

S

17s

T

10w

R

SE NW NW

LOCATION

Rupe Oil Company

OPERATOR

1

NO.

Schepman

FARM

ELEVATION:

1836.95

Rupe Oil Company, Inc.

P.O. Box 2273

Wichita, Kansas 67201

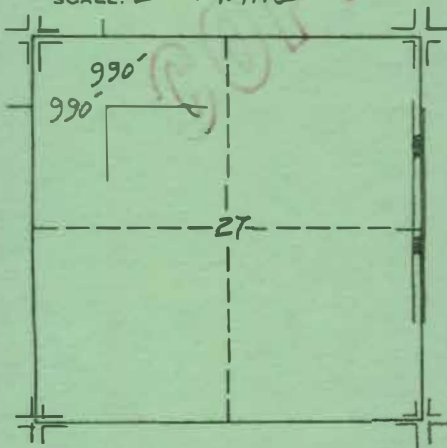
AUTHORIZED BY:

Bill Clement

PHONE #

rush this week

SCALE: 2" = 1 Mile



Set 5' + 1' stk.

Loc. fell in level wheat.

MINIMUM STAKING CHARGE:  
(INCLUDES GROUND ELEVATION)

\$175.00 "rush"

EXTRA TIME & MILEAGE:

ELEVATION CHARGE:

TOTAL:

\$175.00 ✓

L. Porzweiler

L-S SURVEYOR

miled copy John Cecil 11/18/81