

WELL NAME

Kraft #12

COMPANY

American Warrior Inc

LOCATION

10-17s-11w

Barton co Kansas

DATE

11/29/00

TRILOBITE TESTING L.L.C.

OPERATOR : American Warrior Inc. DATE 11-21-000
 WELL NAME: Kraft #12 KB 1877.00 ft TICKET NO: 13216 DST #1
 LOCATION : 10-17s-11w Barton co KS GR 1869.00 ft FORMATION: Lans.
 INTERVAL : 3012.00 To 3082.00 ft TD 3082.00 ft TEST TYPE: CONVENTIONAL

RECORDER DATA

Mins	Field	1	2	3	4	TIME DATA-----
PF 20 Rec.	10248	10248	2342			PF Fr. 1525 to 1545 hr
SI 30 Range(Psi)	4400.0	4400.0	4995.0	0.0	0.0	IS Fr. 1545 to 1615 hr
SF 30 Clock(hrs)	12 hr	12 hr	batt.			SF Fr. 1615 to 1645 hr
FS 60 Depth(ft)	3079.0	3079.0	3023.0	0.0	0.0	FS Fr. 1645 to 1745 hr

	Field	1	2	3	4	
A. Init Hydro	1522.0	0.0	1462.0	0.0	0.0	T STARTED 1335 hr
B. First Flow	25.0	0.0	26.0	0.0	0.0	T ON BOTM 1520 hr
B1. Final Flow	28.0	0.0	38.0	0.0	0.0	T OPEN 1525 hr
C. In Shut-in	773.0	0.0	762.0	0.0	0.0	T PULLED 1747 hr
D. Init Flow	37.0	0.0	43.0	0.0	0.0	T OUT 1930 hr
E. Final Flow	50.0	0.0	50.0	0.0	0.0	
F. Fl Shut-in	768.0	0.0	775.0	0.0	0.0	TOOL DATA-----
G. Final Hydro	1478.0	0.0	1434.0	0.0	0.0	Tool Wt. 2100.00 lbs
Inside/Outside	0	0	I	T		Wt Set On Packer 20000.00 lbs
						Wt Pulled Loose 62000.00 lbs
						Initial Str Wt 45000.00 lbs
						Unseated Str Wt 46000.00 lbs
						Bot Choke 0.75 in
						Hole Size 7.88 in
						D Col. ID 2.25 in
						D. Pipe ID 3.80 in
						D.C. Length 0.00 ft
						D.P. Length 3012.00 ft

RECOVERY

Tot Fluid 85.00 ft of 0.00 ft in DC and 85.00 ft in DP
 0.00 ft of Gas in all fluid free pipe.
 25.00 ft of Gas Cut Mus 12%g 88%m
 60.00 ft of Muddy Water 50%m 50%w
 0.00 ft of
 0.00 ft of
 0.00 ft of
 0.00 ft of Rw .18 ohms @ 44 degrees F.
 0.00 ft of EST.FT. of PAY-----5
 SALINITY 68000.00 P.P.M. A.P.I. Gravity 0.00

MUD DATA-----

Mud Type	Chemical
Weight	9.20 lb/c:
Vis.	50.00 S/L
W.L.	11.20 in3
F.C.	0.20 in
Mud Drop N	
Amt. of fill	3.00 ft
Btm. H. Temp.	99.00 F
Hole Condition	good
% Porosity	12.00
Packer Size	6.75 in
No. of Packers	2
Cushion Amt.	0.00 N
Cushion Type	None
Reversed Out N	
Tool Chased Y	2.00 ft
Tester	Gary Pevoteaux
Co. Rep.	Scott Corsair
Contr.	Discovery Drlg.
Rig #	2
Unit #	
Pump T.	LCM 1 #/bl

BLOW DESCRIPTION

Initial Flow:
 Strong blow bottom of bucket in
 40 seconds
 Initial shutin: No blow.
 Final Flow:
 Strong blow. Bottom of bucket in
 12 seconds
 Final Shutin:
 Gas To Surface 15 secs. in to FSIP
 while blowing down
 No blow back
 SAMPLES: none
 SENT TO: Caraway/Liberal

Test Successful: Y

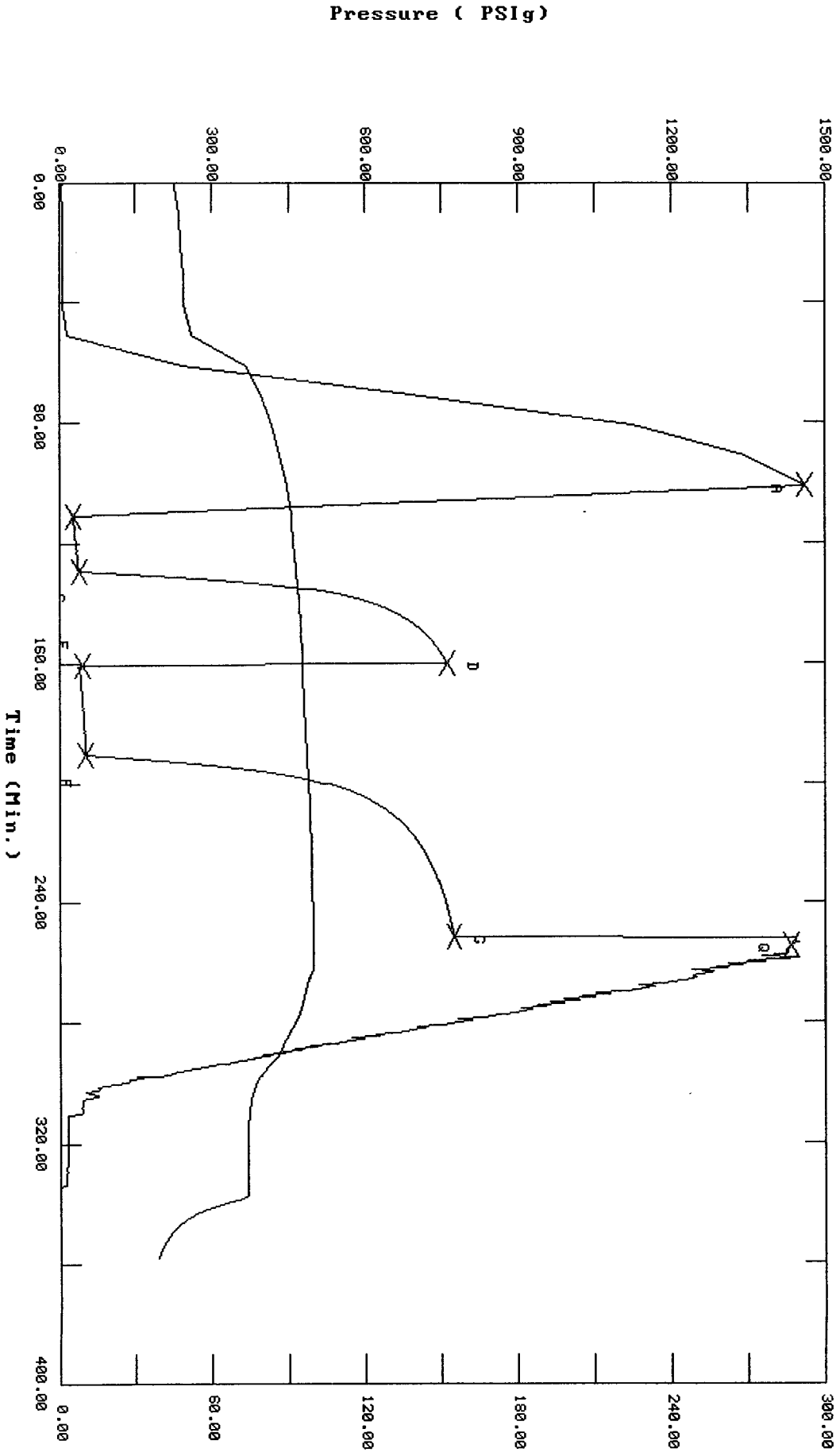
*** TOOL DIAGRAM *** CONVENTIONAL

WELL NAME: Kraft #12	H	P.O. SUB	
	H	C.O. SUB @ top of tool	2992
LOCATION : 10-17s-11w Barton co KS	H	S.I. TOOL Sterling	2998
TICKET No. 13216 D.S.T. No. 1 DATE 11-21-000	H		
TOTAL TOOL TO BOTTOM OF TOP PACKERS 20	H		
INTERVAL TOOL	H	HMV Sterling	3003
BOTTOM PACKERS AND ANCHOR 40	H	JARS	
TOTAL TOOL 50	H		
DRILL COLLAR ANCHOR IN INTERVAL	H		
D.C. ANCHOR STND.Stands Single Total	H	SAFETY JOINT none	
D.P. ANCHOR STND.Stands Single 1 Total 30	H	PACKER Top	3007
TOTAL ASSEMBLY 50	H	PACKER Btm.	3012
D.C. ABOVE TOOLS.Stands Single Total	H	DEPTH 3012	
D.P. ABOVE TOOLS.Stands48 Single 1 Total 3012	H	1 ft.	3013
TOTAL DRILL COLLARS DRILL PIPE & TOOLS .. 3102	H	ANCHOR	
	H	6'perfs & sub to	3019
TOTAL DEPTH 3082	H	Alpine rec. @ 3023	
TOTAL DRILL PIPE ABOVE K.B. 20	H		
REMARKS:	H		
Comments:	H		
	H	1 jt.pipe & sub to	3050
FLUID SAMPLER DATA (not run)	H		
GAS-----	H		
OIL----- ML.	H		
MUD----- ML.	H		
WATER----- ML.	H		
OTHER-----	H		
PRESSURE----- PSI	H		
Rw ----- ohms @ deg. F.	H	27' perfs to	3077
CHLORIDES----- ppm.	H		
GRAVITY----- n/a deg.API	H		
	H	AK-1 rec. @ 3079	
	H	BULLNOSE 5 ft. perforated	3082
	H	T.D.	

TEST HISTORY
 13216 DST#1 KRAFT #12 AMERICAN WARRIOR INC.

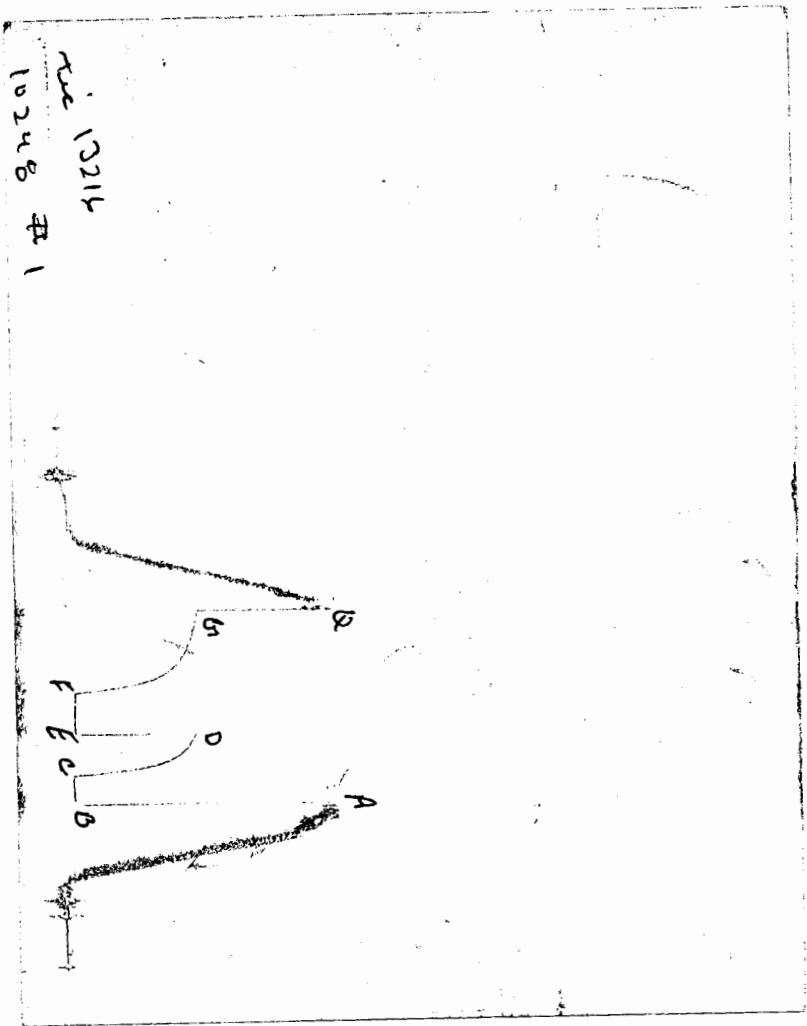
Flag Points

Time (Min.)	PK	PSig
R:	0.00	1461.76
B:	0.00	25.59
C:	18.00	37.67
D:	31.00	761.64
E:	0.00	42.71
F:	30.00	49.68
G:	61.00	775.32
Q:	0.00	1433.65



Temperature (DEG F)

CHART PAGE



This is a photocopy of the actual AK-1 recorder chart

TRILOBITE TESTING L.L.C.

P.O. Box 362 • Hays, Kansas 67601

No 13216

Test Ticket

Well Name & No. Kraft # 12 Test No. 1 Date 11-21-2000
 Company American Warrior Inc. Zone Tested Lans.
 Address P.O. Box 399, Garden City Ks 67846 Elevation 1477 KB 1851 GL
 Co. Rep / Geo. Scott Cousar Cont. Discovery Drilling #2 Est. Ft. of Pay 5 Por. %
 Location: Sec. 10 Twp. 17^s Rge. 11^w Co. Barton State Ks.
 No. of Copies 5 Distribution Sheet (Y, N) N Turnkey (Y, N) Evaluation (Y, N)

Interval Tested 3012 - 3082' Initial Str Wt./Lbs. 45,000 Unseated Str Wt./Lbs. 46,000
 Anchor Length 70' Wt. Set Lbs. 20,000 Wt. Pulled Loose/Lbs. 62,000
 Top Packer Depth 3007' Tool Weight 2100 II
 Bottom Packer Depth 3012' Hole Size — 7 7/8" Rubber Size — 6 3/4"
 Total Depth 3082' Wt. Pipe Run None Drill Collar Run None
 Mud Wt. 9.2 LCM 1[#] Vis. SO WL 11.2cc Drill Pipe Size 4 1/2" x H. Ft. Run 3012'
 Blow Description IF: Strong blow. B.O.B. in 40 secs.
ISI: No. below.
FF: Strong blow. B.O.B. in 12 secs. FSI: GTS 15 secs.
in to FSIP while blowing down. No blow back.

Recovery — Total Feet	GIP	Ft. in DC	Ft. in DP
25	yes	12	85
60			

BHT 99 °F Gravity N/A °API D@ °F Corrected Gravity N/A °API
 RW 18 @ 44 °F Chlorides 48,000 ppm Recovery Chlorides 6,000 ppm System

	AK-1	Alpine	Recorder No.	T-On Location
(A) Initial Hydrostatic Mud	1522	1462	2342	1200
(B) First Initial Flow Pressure	25	26	(depth) 3023'	1335
(C) First Final Flow Pressure	28	38	10248	1525 7:30
(D) Initial Shut-In Pressure	773	762	(depth) 3079'	1747
(E) Second Initial Flow Pressure	37	43		1930
(F) Second Final Flow Pressure	50	50	(depth)	2020
(G) Final Shut-in Pressure	768	775	Initial Opening 20	Test <input checked="" type="checkbox"/> 650 ⁰⁰
(Q) Final Hydrostatic Mud	1478	1434	Initial Shut-in 30	Jars <u> </u>
			Final Flow 30	Safety Joint <u> </u>
			Final Shut-in 60	Straddle <u> </u>
			4	Circ. Sub <u> </u>
				Sampler <u> </u>
				Extra Packer <u> </u>
				Elec. Rec. <input checked="" type="checkbox"/> 150 ⁰⁰
				Mileage <input checked="" type="checkbox"/> 75 ⁰⁰
				Other <u> </u>
				TOTAL PRICE \$ <input checked="" type="checkbox"/> 875 ⁰⁰

TRILOBITE TESTING L.L.C. SHALL NOT BE LIABLE FOR DAMAGE OF ANY KIND OF THE PROPERTY OR PERSONNEL OF THE ONE FOR WHOM A TEST IS MADE, OR FOR ANY LOSS SUFFERED OR SUSTAINED, DIRECTLY OR INDIRECTLY, THROUGH THE USE OF ITS EQUIPMENT, OR ITS STATEMENTS OR OPINION CONCERNING THE RESULTS OF ANY TEST. TOOLS LOST OR DAMAGED IN THE HOLE SHALL BE PAID FOR AT COST BY THE PARTY FOR WHOM THE TEST IS MADE.

Approved By [Signature]
 Our Representative [Signature]

TRILOBITE TESTING L.L.C.

OPERATOR : American Warrior Inc.

DATE 11-22-000

WELL NAME: Kraft #12

KB 1877.00 ft

TICKET NO: 13217

DST #2

LOCATION : 10-17s-11w Barton co KS

GR 1869.00 ft

FORMATION: Lans.

INTERVAL : 3197.00 To 3220.00 ft

TD 3220.00 ft

TEST TYPE: CONVENTIONAL

RECORDER DATA

Mins	Field	1	2	3	4	TIME DATA-----
PF 30 Rec.	10248	10248	2342			PF Fr. 1045 to 1115 hr
SI 30 Range(Psi)	4400.0	4400.0	4995.0	0.0	0.0	IS Fr. 1115 to 1145 hr
SF 14 Clock(hrs)	12 hr	12 hr	batt.			SF Fr. 1145 to 1159 hr
FS 0 Depth(ft)	3217.0	3217.0	3203.0	0.0	0.0	FS Fr. to hr

	Field	1	2	3	4	
A. Init Hydro	1657.0	0.0	1636.0	0.0	0.0	T STARTED 0918 hr
B. First Flow	34.0	0.0	19.0	0.0	0.0	T ON BOTM 1040 hr
B1. Final Flow	23.0	0.0	18.0	0.0	0.0	T OPEN 1045 hr
C. In Shut-in	244.0	0.0	236.0	0.0	0.0	T PULLED 1159 hr
D. Init Flow	28.0	0.0	18.0	0.0	0.0	T OUT 1325 hr
E. Final Flow	23.0	0.0	18.0	0.0	0.0	
F. Fl Shut-in	0.0	0.0	0.0	0.0	0.0	TOOL DATA-----
G. Final Hydro	1602.0	0.0	1534.0	0.0	0.0	Tool Wt. 2100.00 lbs
Inside/Outside	0	0	I	T		Wt Set On Packer 20000.00 lbs
						Wt Pulled Loose 65000.00 lbs
						Initial Str Wt 46000.00 lbs
						Unseated Str Wt 46000.00 lbs

RECOVERY

Tot Fluid 1.00 ft of 0.00 ft in DC and 1.00 ft in DP
 1.00 ft of Drlg. mud
 0.00 ft of
 0.00 ft of
 0.00 ft of
 0.00 ft of
 0.00 ft of
 0.00 ft of Rw n.c. ohms @ degrees F.
 0.00 ft of EST.FT. of PAY-----4
 SALINITY 6000.00 P.P.M. A.P.I. Gravity 0.00

MUD DATA-----

Mud Type Chemical
 Weight 9.20 lb/ci
 Vis. 45.00 S/L
 W.L. 11.20 in3
 F.C. 0.20 in
 Mud Drop N
 Amt. of fill 0.00 ft
 Btm. H. Temp. 100.00 F
 Hole Condition good
 % Porosity 10.00
 Packer Size 6.75 in
 No. of Packers 2
 Cushion Amt. 0.00 N
 Cushion Type None
 Reversed Out N
 Tool Chased N
 Tester Gary Pevoteaux
 Co. Rep. Scott Corsair
 Contr. Discovery Drlg.
 Rig # 2
 Unit #
 Pump T. LCM 1 #/bl

BLOW DESCRIPTION

Initial Flow:
 Weak to very weak blow (1/4" or less)

Initial Shutin: No blow.

Final Flow: No blow.

Final Shutin: n/a

SAMPLES: none

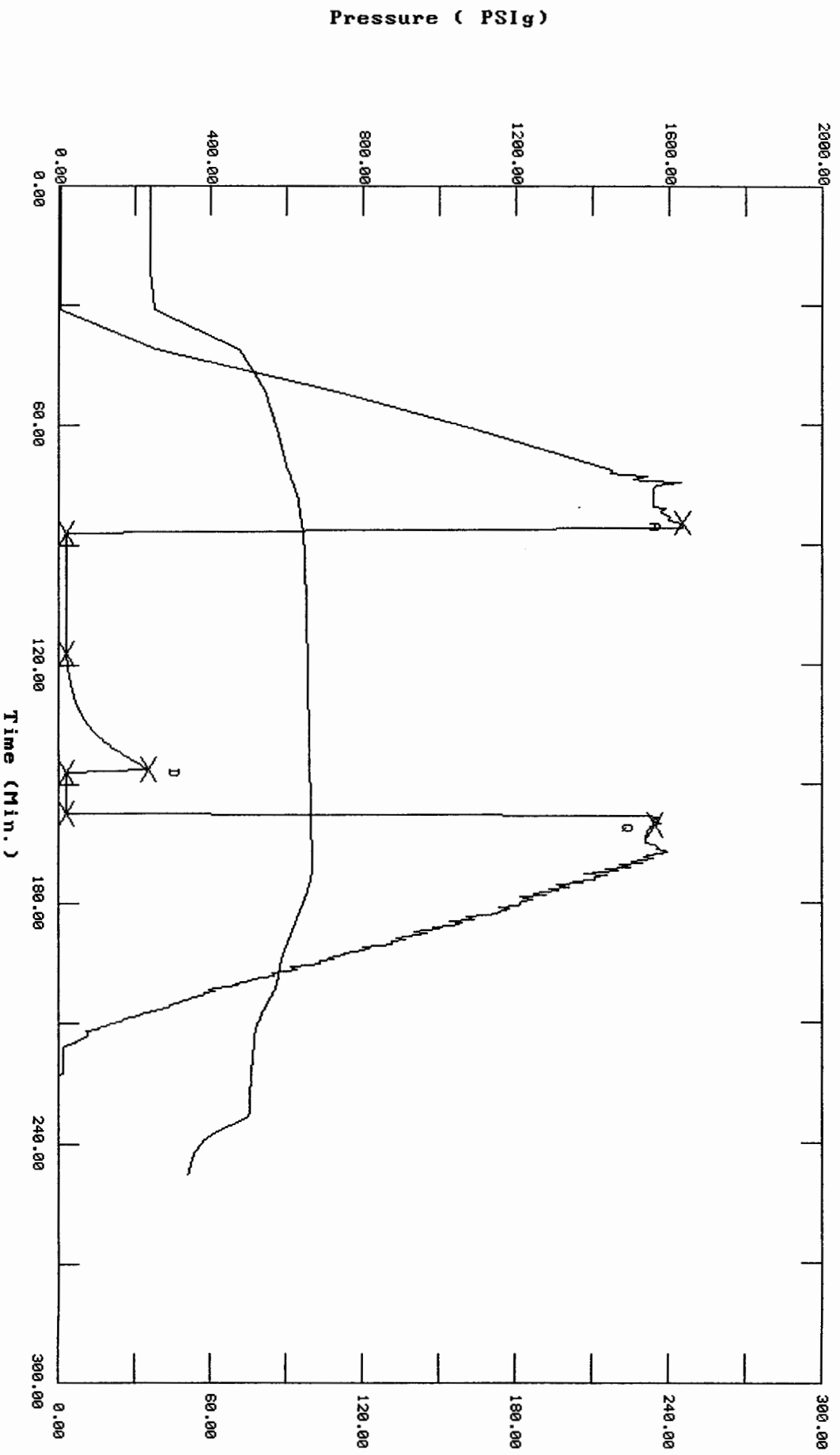
SENT TO: Caraway/Liberal

Test Successful: Y

TEST HISTORY
 13217 DST #2 KRAFT #12 AMERICAN WARRIOR INC.

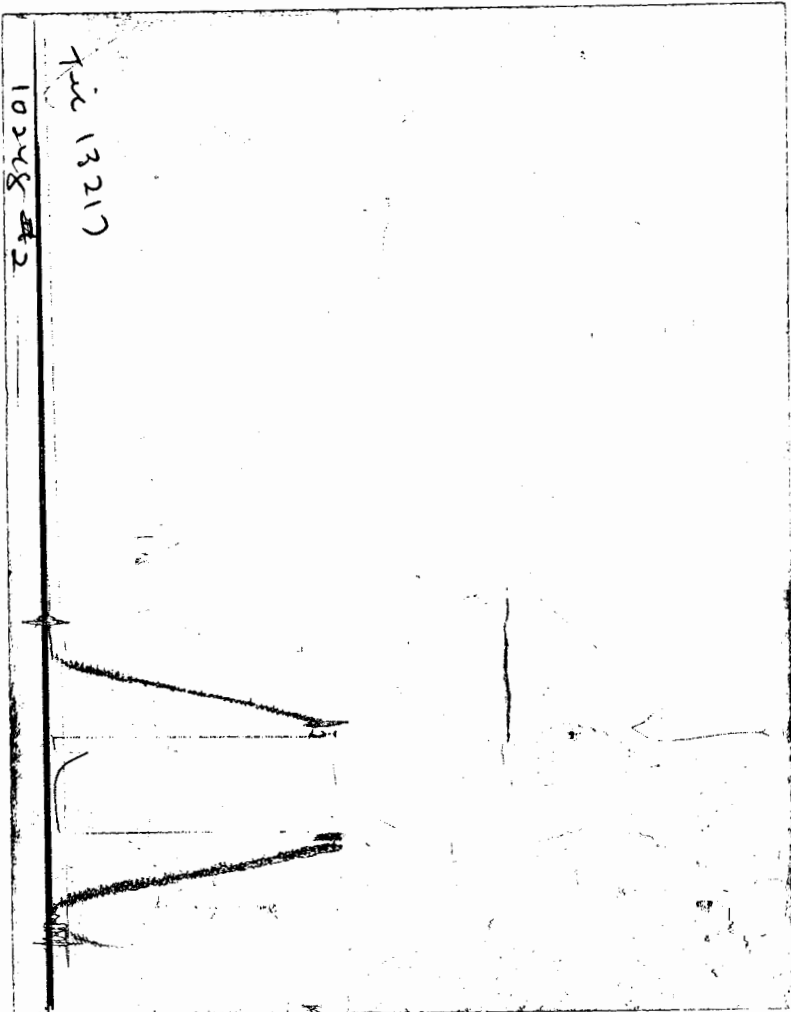
Flag Points

t (Min.)	P (PSig)
A: 0.00	1636.08
B: 0.00	18.71
C: 30.00	18.46
D: 29.50	236.42
E: 0.00	18.20
F: 10.50	18.37
G: 0.00	1564.07



Temperature (DEG F)

CHART PAGE



This is a photocopy of the actual AK-1 recorder chart

TRILOBITE TESTING L.L.C.

P.O. Box 362 • Hays, Kansas 67601

N^o 13217

Test Ticket

Well Name & No. Kraft #12 Test No. 2 Date 11-22-2000
 Company American Warrior Inc. Zone Tested Hays
 Address P.O. Box 399, Camden City, Mo. 67846 Elevation 1477 KB 1849 GL
 Co. Rep / Geo. Scott Corsair Cont. Discovery Drilling Est. Ft. of Pay 4 Por. %
 Location: Sec. 10 Twp. 17S Rge. 11W Co. Barton State Mo.
 No. of Copies 8 Distribution Sheet (Y, N) N Turnkey (Y, N) Evaluation (Y, N)

Interval Tested 3197 - 3220' Initial Str Wt./Lbs. 46,000 Unseated Str Wt./Lbs. 46,000
 Anchor Length 23' Wt. Set Lbs. 29,000 Wt. Pulled Loose/Lbs. 65,000
 Top Packer Depth 3192' Tool Weight 2100 lb
 Bottom Packer Depth 3197' Hole Size — 7 7/8" ✓ Rubber Size — 6 3/4" ✓
 Total Depth 3220' Wt. Pipe Run None Drill Collar Run None
 Mud Wt. 9.2 LCM 1# Vis. 45 WL 11.2cc Drill Pipe Size 4 1/2" x 11' Ft. Run 3199'
 Blow Description IF: weak to very weak below (1/4" or less)
FSI: No below.
FF: No below.

Recovery — Total Feet 1 GIP Reg Mud Ft. in DC Ft. in DP 1
 Rec. Feet Of %gas %oil %water %mud
 Rec. Feet Of %gas %oil %water %mud
 Rec. Feet Of %gas %oil %water %mud
 Rec. Feet Of %gas %oil %water %mud
 Rec. Feet Of %gas %oil %water %mud
 BHT 100 °F Gravity N/A °API D@ °F Corrected Gravity N/A °API
 RW N.C. @ °F Chlorides 4,000 ppm Recovery Chlorides 4,000 ppm System

	AK-1	Alpine	PSI Recorder No.	T-On Location
(A) Initial Hydrostatic Mud	1657	1636	alp 2342	0815
(B) First Initial Flow Pressure	34	19	(depth) 3203'	T-Started 0918
(C) First Final Flow Pressure	23	18	PSI Recorder No. 10248	T-Open 1045
(D) Initial Shut-In Pressure	244	236	(depth) 3217'	T-Pulled 1159
(E) Second Initial Flow Pressure	28	18	PSI Recorder No. <u> </u>	T-Out 1325
(F) Second Final Flow Pressure	23	18	(depth) <u> </u>	T-Off Location 1415
(G) Final Shut-in Pressure	None	None	PSI Initial Opening 30	Test <u>✓</u> 650
(Q) Final Hydrostatic Mud	1602	1534	PSI Initial Shut-in 30	Jars <u> </u>

Final Flow 14 Safety Joint
 Final Shut-in None Straddle
 Circ. Sub
 Sampler
 Extra Packer
 Elec. Rec. ✓ 150
 Mileage ✓ 75
 Other
 TOTAL PRICE \$ ✓ 875.00

TRILOBITE TESTING L.L.C. SHALL NOT BE LIABLE FOR DAMAGE OF ANY KIND OF THE PROPERTY OR PERSONNEL OF THE ONE FOR WHOM A TEST IS MADE, OR FOR ANY LOSS SUFFERED OR SUSTAINED, DIRECTLY OR INDIRECTLY, THROUGH THE USE OF ITS EQUIPMENT, OR ITS STATEMENTS OR OPINION CONCERNING THE RESULTS OF ANY TEST. TOOLS LOST OR DAMAGED IN THE HOLE SHALL BE PAID FOR AT COST BY THE PARTY FOR WHOM THE TEST IS MADE.

Approved By Scott
 Our Representative Conny R. Waterbury

TRILOBITE TESTING L.L.C.

OPERATOR : American Warrior Inc. DATE 11-23-000
 WELL NAME: Kraft #12 KB 1877.00 ft TICKET NO: 13218 DST #3
 LOCATION : 10-17s-11w Barton co KS GR 1869.00 ft FORMATION: Arbuckle
 INTERVAL : 3275.00 To 3292.00 ft TD 3292.00 ft TEST TYPE: CONVENTIONAL

RECORDER DATA

Mins	Field	1	2	3	4	TIME DATA-----
PF 20 Rec.	13254	13254	2342			PF Fr. 0403 to 0423 hr
SI 30 Range(Psi)	4550.0	4550.0	4995.0	0.0	0.0	IS Fr. 0423 to 0453 hr
SF 20 Clock(hrs)	12 hr	12 hr	batt.			SF Fr. 0453 to 0513 hr
FS 30 Depth(ft)	3289.0	3289.0	3281.0	0.0	0.0	FS Fr. 0513 to 0543 hr

	Field	1	2	3	4	
A. Init Hydro	1682.0	0.0	1675.0	0.0	0.0	T STARTED 0218 hr
B. First Flow	474.0	0.0	453.0	0.0	0.0	T ON BOTM 0400 hr
B1. Final Flow	851.0	0.0	917.0	0.0	0.0	T OPEN 0403 hr
C. In Shut-in	981.0	0.0	1007.0	0.0	0.0	T PULLED 0548 hr
D. Init Flow	934.0	0.0	928.0	0.0	0.0	T OUT 0910 hr
E. Final Flow	981.0	0.0	1006.0	0.0	0.0	
F. Fl Shut-in	981.0	0.0	1011.0	0.0	0.0	TOOL DATA-----
G. Final Hydro	1554.0	0.0	1565.0	0.0	0.0	Tool Wt. 2100.00 lbs
Inside/Outside	O	O	I	T		Wt Set On Packer 20000.00 lbs
						Wt Pulled Loose 80000.00 lbs
						Initial Str Wt 45000.00 lbs
						Unseated Str Wt 62000.00 lbs
						Bot Choke 0.75 in
						Hole Size 7.88 in
						D Col. ID 2.25 in
						D. Pipe ID 3.80 in
						D.C. Length 0.00 ft
						D.P. Length 3260.00 ft

RECOVERY

Tot Fluid 2190.00 ft of 0.00 ft in DC and 2190.00 ft in DP
 80.00 ft of Muddy Water 30 %mud 70%water
 2110.00 ft of Water with a trace of oil specs. 4%m 96%w
 0.00 ft of
 0.00 ft of
 0.00 ft of
 0.00 ft of
 0.00 ft of Rw .30 ohms @ 40 degrees F.
 0.00 ft of EST.FT. of PAY-----5
 SALINITY 41000.00 P.P.M. A.P.I. Gravity 0.00

MUD DATA-----

Mud Type	Chemical
Weight	9.20 lb/c
Vis.	45.00 S/L
W.L.	11.20 in3
F.C.	0.20 in
Mud Drop N	

BLOW DESCRIPTION

Initial flow:
 Strong blow - bottom of bucket in
 30 seconds

Initial shutin: no blow

Final flow:
 Strong blow - bottom of bucket in
 45 seconds

Final shutin: No blow.

SAMPLES: none
 SENT TO: Caraway/Liberal

Amt. of fill	0.00 ft
Btm. H. Temp.	99.00 F
Hole Condition	good
% Porosity	28.00
Packer Size	6.75 in
No. of Packers	2
Cushion Amt.	0.00 N
Cushion Type	None
Reversed Out Y	
Tool Chased N	
Tester	Gary Pevoteaux
Co. Rep.	Scott Corsair
Contr.	Discovery Drlg.
Rig #	2
Unit #	
Pump T.	LCM 1 #/bl

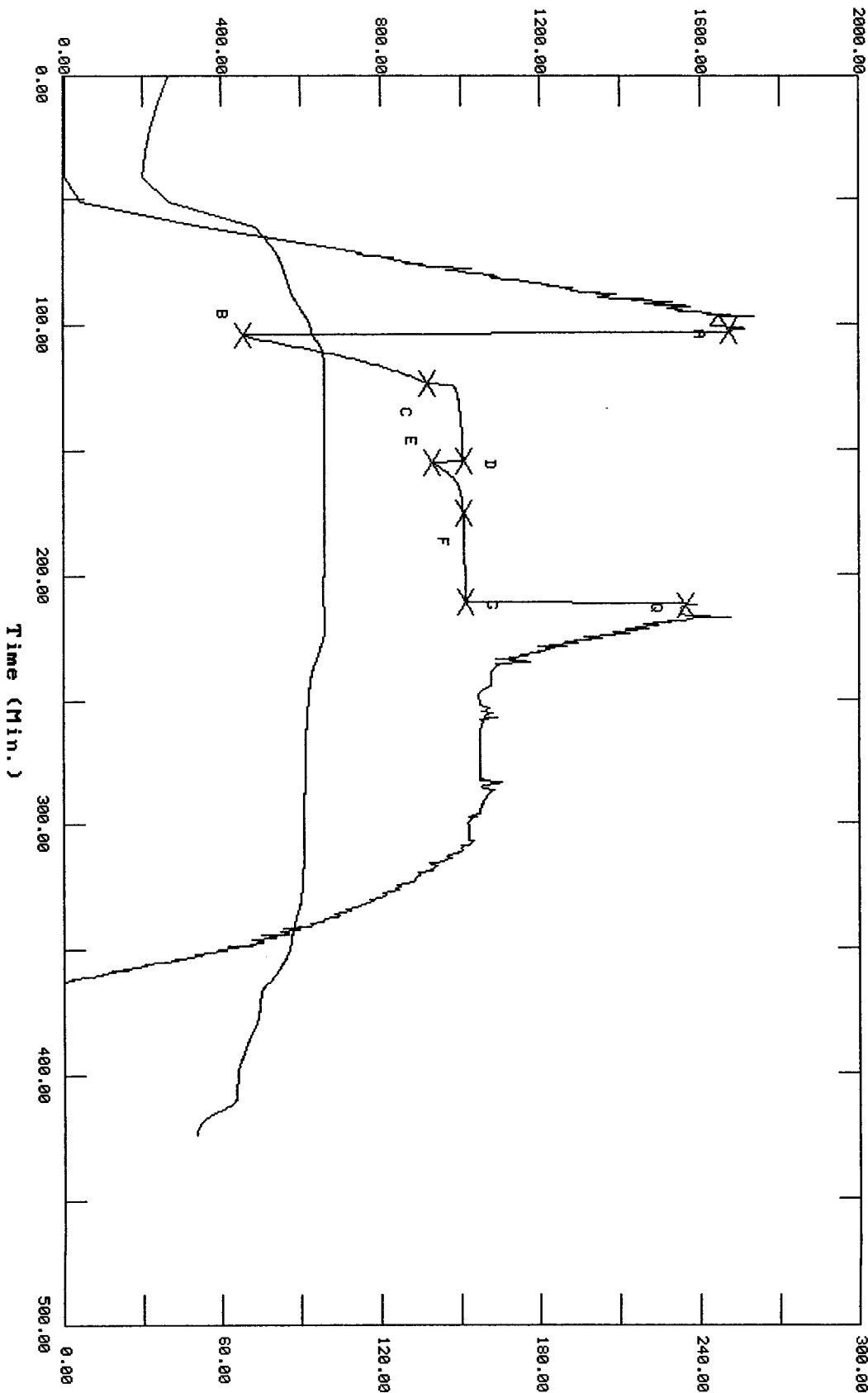
Test Successful: Y

13218 DST#3 KRAFT #12 AMERICAN WARRIOR INC.

TEST HISTORY

Flag Points
 t(Min.) P(PSig)

R1	0.00	1574.52
B1	0.00	453.37
C1	19.50	916.82
D1	31.00	1006.03
E1	0.00	927.65
F1	20.50	1006.12
G1	35.50	1011.15
O1	0.00	1564.74

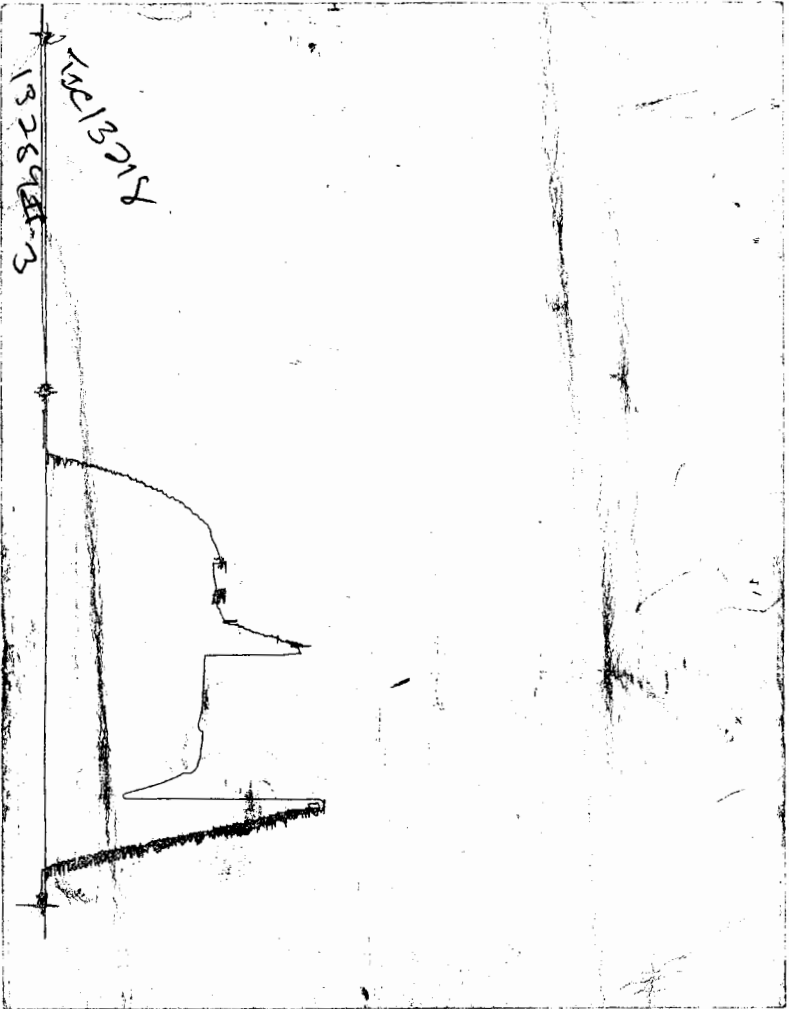


Pressure (PSig)

Temperature (DEG F)

Time (Min.)

CHART PAGE



This is a photocopy of the actual AK-1 recorder chart

TRILOBITE TESTING L.L.C.

P.O. Box 362 • Hays, Kansas 67601

No 13218

Test Ticket

Well Name & No. Kraft # 12 Test No. 3 Date 11-23-2000
 Company American Marine Inc Zone Tested Archieville
 Address P.O. Box 399, Garden City, Mo. Elevation 1877 KB 1801 GL
 Co. Rep / Geo. Dale Corvair Cont. Discovery Dept 2 Est. Ft. of Pay 5' Por. %
 Location: Sec. 16 Twp. 17 S Rge. 11 W Co. Barton State MO
 No. of Copies 5 Distribution Sheet (Y, N) N Turnkey (Y, N) Evaluation (Y, N)

Interval Tested 3275 - 3292' Initial Str Wt./Lbs. 45000 Unseated Str Wt./Lbs. 61,000
 Anchor Length 17' Wt. Set Lbs. 20,000 Wt. Pulled Loose/Lbs. 80,000
 Top Packer Depth 3276' Tool Weight 2100 lb
 Bottom Packer Depth 3275' Hole Size — 7 7/8" Rubber Size — 6 3/4"
 Total Depth 3292' Wt. Pipe Run None Drill Collar Run None
 Mud Wt. 9.0 LCM 10 Vis. 44 WL 11.2cc Drill Pipe Size 4 1/2" ext Ft. Run 3260
 Blow Description IF: Strong blow B.O.B. in 30 sec. ISL: No blow

IF: Strong blow B.O.B. in 45 sec. ISL: No blow

Recovery — Total Feet	GIP	Ft. in DC	Ft. in DP
<u>80</u>	<u>N.W.</u>	<u> </u>	<u>2190'</u>
<u>2110</u>	<u>M.W. to a trace of</u>	<u> </u>	<u> </u>
<u> </u>	<u>oil spots</u>	<u> </u>	<u> </u>
<u> </u>	<u> </u>	<u> </u>	<u> </u>
<u> </u>	<u> </u>	<u> </u>	<u> </u>

BHT 99 °F Gravity N/A °API D@ °F Corrected Gravity N/A °API
 RW .30 @ 40 °F Chlorides 41,000 ppm Recovery Chlorides 4,000 ppm System

	AK-1	Alpine	PSI Recorder No.	T-On Location
(A) Initial Hydrostatic Mud	<u>1682</u>	<u>1675</u>	<u>2342</u>	<u>0015</u>
(B) First Initial Flow Pressure	<u>474</u>	<u>453</u>	(depth) <u>3281'</u>	T-Started <u>0218</u>
(C) First Final Flow Pressure	<u>851</u>	<u>917</u>	PSI Recorder No. <u>13254</u>	T-Open <u>0403</u>
(D) Initial Shut-in Pressure	<u>981</u>	<u>1007</u>	PSI (depth) <u>3280'</u>	T-Pulled <u>0548</u>
(E) Second Initial Flow Pressure	<u>934</u>	<u>928</u>	PSI Recorder No. <u>3289'</u>	T-Out <u>0910</u>
(F) Second Final Flow Pressure	<u>981</u>	<u>1006</u>	PSI (depth) <u> </u>	T-Off Location <u>1000</u>
(G) Final Shut-in Pressure	<u>981</u>	<u>1011</u>	PSI Initial Opening <u>20</u>	Test <u>✓ 650</u>
(Q) Final Hydrostatic Mud	<u>1534</u>	<u>1565</u>	PSI Initial Shut-in <u>30</u>	Jars <u>✗ No</u>
			Final Flow <u>20</u>	Safety Joint <u>✗ No</u>
			Final Shut-in <u>30</u>	Straddle <u> </u>
				Circ. Sub <u>30</u>
				Sampler <u> </u>
				Extra Packer <u> </u>
				Elec. Rec. <u>✓ 150</u>
				Mileage <u>75 ✓ 75</u>
				Other <u> </u>
				TOTAL PRICE \$ <u>✓ 945.00</u>

TRILOBITE TESTING L.L.C. SHALL NOT BE LIABLE FOR DAMAGE OF ANY KIND OF THE PROPERTY OR PERSONNEL OF THE ONE FOR WHOM A TEST IS MADE, OR FOR ANY LOSS SUFFERED OR SUSTAINED, DIRECTLY OR INDIRECTLY, THROUGH THE USE OF ITS EQUIPMENT OR ITS STATEMENTS OR OPINION CONCERNING THE RESULTS OF ANY TEST. TOOLS LOST OR DAMAGED IN THE HOLE SHALL BE PAID FOR AT COST BY THE PARTY FOR WHOM THE TEST IS MADE.

Approved By Dale Corvair
 Our Representative