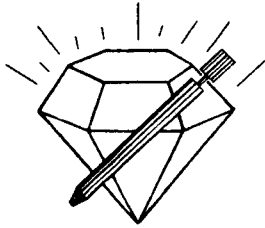


15-009-25048



DIAMOND TESTING

P.O. Box 157
HOISINGTON, KANSAS 67544
(620) 653-7550 • (800) 542-7313
STC 21108.D459

Company Reif Oil & Gas Co., LLC Lease & Well No. Lang No. 1
Elevation 1947 KB Formation Lansing/Kansas City "A"-"F" Effective Pay -- Ft. Ticket No. J2063
Date 5-2-07 Sec. 4 Twp. 17S Range 13W County Barton State Kansas
Test Approved By Jim Musgrove Diamond Representative John C. Riedl

Formation Test No. 1 Interval Tested from 3,174 ft. to 3,241 ft. Total Depth 3,241 ft.
Packer Depth 3,169 ft. Size 6 3/4 in. Packer Depth -- ft. Size -- in.
Packer Depth 3,174 ft. Size 6 3/4 in. Packer Depth -- ft. Size -- in.
Depth of Selective Zone Set ft.

Top Recorder Depth (Inside) 3,177 ft. Recorder Number 21108 Cap. 5,000 psi
Bottom Recorder Depth (Outside) 3,238 ft. Recorder Number 11017 Cap. 4,000 psi
Below Straddle Recorder Depth ft. Recorder Number Cap. psi

Drilling Contractor Sterling Drilling Company - Rig 1 Drill Collar Length 250 ft. I.D. 2 1/4 in.
Mud Type Chemical Viscosity 43 Weight Pipe Length -- ft. I.D. -- in.
Weight 8.8 Water Loss 8.8 cc. Drill Pipe Length 2,904 ft. I.D. 3 1/2 in.
Chlorides 3,700 P.P.M. Test Tool Length 20 ft. Tool Size 3 1/2 - IF in.
Jars: Make Bowen Serial Number Not Run Anchor Length 67 ft. Size 4 1/2 - FH in.
Did Well Flow? No Reversed Out No Surface Choke Size 1 in. Bottom Choke Size 5/8 in.
Main Hole Size 7 7/8 in. Tool Joint Size 4 1/2 - XH in.

Blow: 1st Open: Weak blow. Steady, 1/2 in., blow throughout.
2nd Open: Weak blow. Steady, 1/2 in., blow throughout.

Recovered 130 ft. of drilling mud with very slightly oil cut mud in tool = .639600 bbls.
Recovered ft. of
Recovered ft. of
Recovered ft. of
Recovered ft. of

Remarks

Time Set Packer(s) 1:45 ~~P.M.~~ ^{A.M.} Time Started Off Bottom 4:15 ~~P.M.~~ ^{A.M.} Maximum Temperature 106°
Initial Hydrostatic Pressure (A) 1525 P.S.I.
Initial Flow Period Minutes 30 (B) 35 P.S.I. to (C) 66 P.S.I.
Initial Closed In Period Minutes 45 (D) 669 P.S.I.
Final Flow Period Minutes 30 (E) 72 P.S.I. to (F) 92 P.S.I.
Final Closed In Period Minutes 45 (G) 627 P.S.I.
Final Hydrostatic Pressure (H) 1487 P.S.I.

GENERAL INFORMATION

Client Information:

Company: REIF OIL+GAS CO. LLC

Contact: DON REIF

Phone: Fax: e-mail:

Site Information:

Contact: JIM MUSGROVE

Phone: Fax: e-mail:

Well Information:

Name: LANG #1

Operator: REIF OIL+GAS CO. LLC

Location-Downhole: DST #1 3174 TO 3241

Location-Surface: S4/17S/13W BARTON COUNTY

Test Information:

Company: DIAMOND TESTING

Representative: JOHN RIEDL

Supervisor: JIM MUSGROVE

Test Type: CONVENTIONAL

Job Number: D458

Test Unit: 2

Start Date: 2007/05/01

Start Time: 23:45:00

End Date: 2007/05/02

End Time: 06:40:00

Report Date: 2007/05/02

Prepared By: JOHN RIEDL

Remarks:

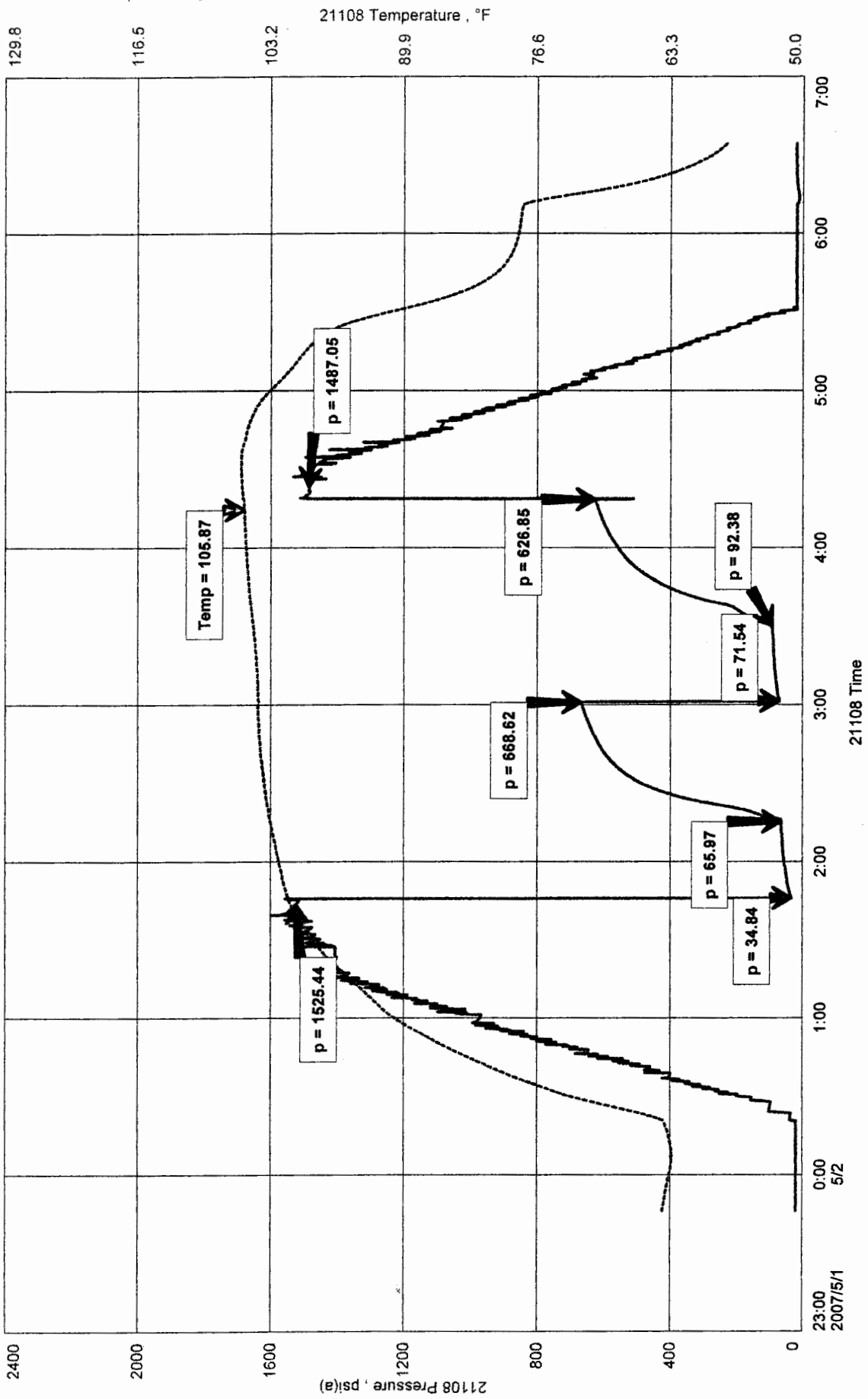
Qualified By: JIM MUSGROVE

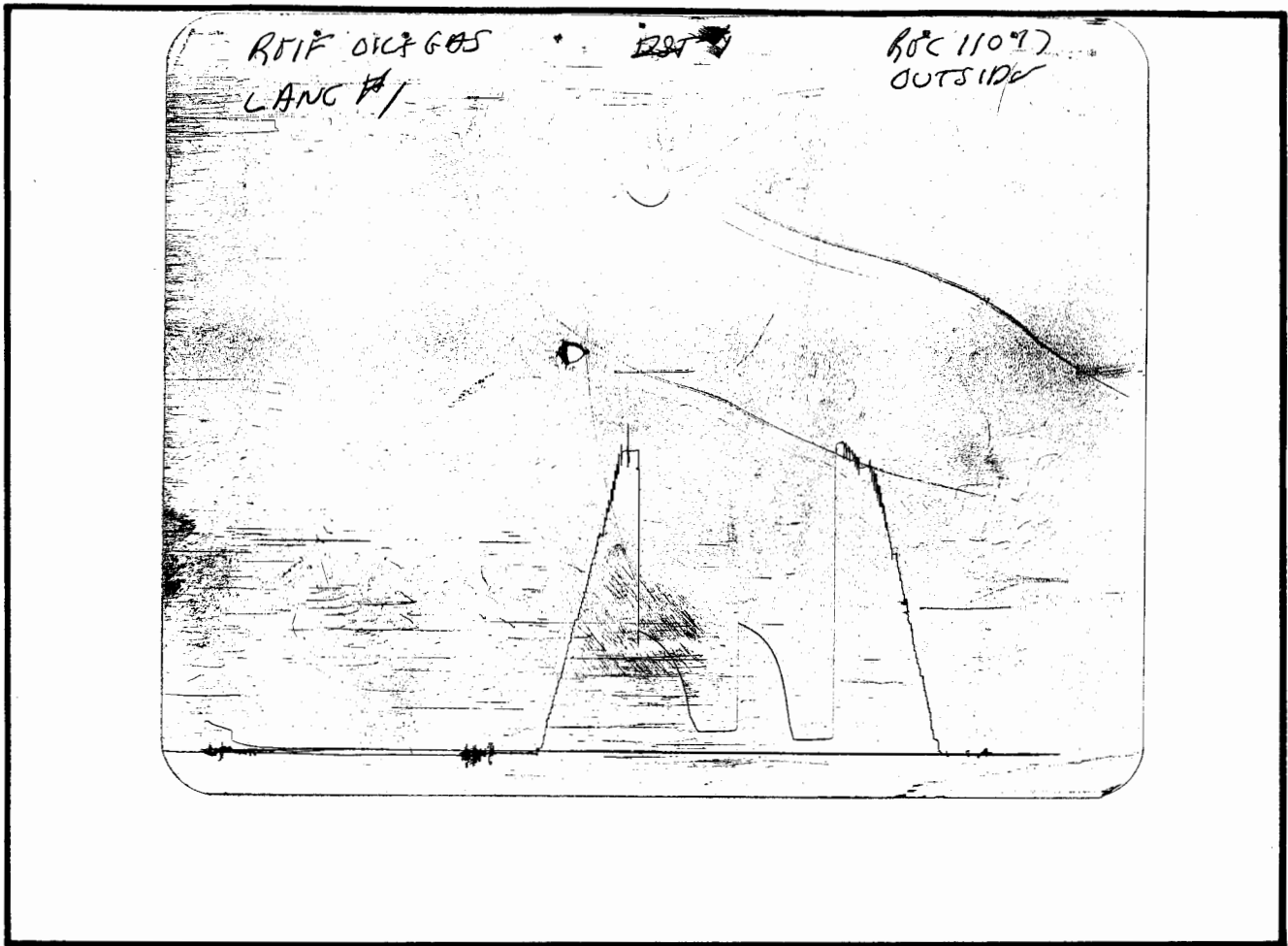
RECOVERY: 130' DRILLING MUD IN DRILL COLLARS
VSLOCM IN TOOL

LANG #1
 Formation: LKC "A THRU F"
 Job Number: D458

REIF OIL+GAS CO. LLC
 DST #1 3174 TO 3241
 Start Test Date: 2007/05/01
 Final Test Date: 2007/05/02

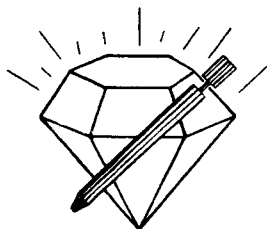
LANG #1





This is an actual photograph of recorder chart.

POINT	PRESSURE		PSI
	Field Reading	Elec. Office Reading	
(A) Initial Hydrostatic Mud	1525	1525	PSI
(B) First Initial Flow Pressure.....	35	35	PSI
(C) First Final Flow Pressure	66	66	PSI
(D) Initial Closed-in Pressure	669	669	PSI
(E) Second Initial Flow Pressure.....	72	72	PSI
(F) Second Final Flow Pressure.....	92	92	PSI
(G) Final Closed-in Pressure.....	627	627	PSI
(H) Final Hydrostatic Mud	1487	1487	PSI



DIAMOND TESTING

P.O. Box 157
HOISINGTON, KANSAS 67544
(620) 653-7550 • (800) 542-7313
STC 21108.D460

Company Reif Oil & Gas Co., LLC Lease & Well No. Lang No. 1

Elevation 1947 KB Formation Marmaton Effective Pay -- Ft. Ticket No. J2064

Date 5-2-07 Sec. 4 Twp. 17S Range 13W County Barton State Kansas

Test Approved By Jim Musgrove Diamond Representative John C. Riedl

Formation Test No. 2 Interval Tested from 3,330 ft. to 3,389 ft. Total Depth 3,389 ft.

Packer Depth 3,325 ft. Size 6 3/4 in. Packer Depth -- ft. Size -- in.

Packer Depth 3,330 ft. Size 6 3/4 in. Packer Depth -- ft. Size -- in.

Depth of Selective Zone Set ft.

Top Recorder Depth (Inside) 3,333 ft. Recorder Number 21108 Cap. 5,000 psi

Bottom Recorder Depth (Outside) 3,386 ft. Recorder Number 11017 Cap. 4,000 psi

Below Straddle Recorder Depth ft. Recorder Number Cap. psi

Drilling Contractor Sterling Drilling Company - Rig 1 Drill Collar Length 280 ft. I.D. 2 1/4 in.

Mud Type Chemical Viscosity 58 Weight Pipe Length -- ft. I.D. -- in.

Weight 9.1 Water Loss 8.0 cc. Drill Pipe Length 3,030 ft. I.D. 3 1/2 in.

Chlorides 7,300 P.P.M. Test Tool Length 20 ft. Tool Size 3 1/2 - IF in.

Jars: Make Bowen Serial Number Not Run Anchor Length 59 ft. Size 4 1/2 - FH in.

Did Well Flow? No Reversed Out No Surface Choke Size 1 in. Bottom Choke Size 5/8 in.

Main Hole Size 7/8 in. Tool Joint Size 4 1/2 - XH in.

Blow: 1st Open: Weak blow. Dead in 10 mins.

2nd Open: No blow.

Recovered 15 ft. of muddy oil = .073800 bbls.

Recovered ft. of

Recovered ft. of

Recovered ft. of

Recovered ft. of

Remarks

Time Set Packer(s) 10:35 ^{XXM.} P.M. Time Started Off Bottom 11:55 ^{XXX.} P.M. Maximum Temperature 103°

Initial Hydrostatic Pressure 1587 P.S.I. (A)

Initial Flow Period 20 Minutes (B) 33 P.S.I. to (C) 33 P.S.I.

Initial Closed In Period 20 Minutes (D) 224 P.S.I.

Final Flow Period 20 Minutes (E) 35 P.S.I. to (F) 36 P.S.I.

Final Closed In Period 20 Minutes (G) 90 P.S.I.

Final Hydrostatic Pressure 1573 P.S.I. (H)

GENERAL INFORMATION

Client Information:

Company: REIF OIL+GAS CO. LLC

Contact: DON REIF

Phone:

Fax:

e-mail:

Site Information:

Contact: JIM MUSGROVE

Phone:

Fax:

e-mail:

Well Information:

Name: LANG #1

Operator: REIF OIL+GAS CO. LLC

Location-Downhole: DST #2 3330 TO 3389

Location-Surface: S4/17S/13W BARTON COUNTY

Test Information:

Company: DIAMOND TESTING

Representative: JOHN RIEDL

Supervisor: JIM MUSGROVE

Test Type: CONVENTIONAL

Job Number: D460

Test Unit: 2

Start Date: 2007/05/02

Start Time: 21:10:00

End Date: 2007/05/03

End Time: 02:00:00

Report Date: 2007/05/03

Prepared By: JOHN RIEDL

Remarks:

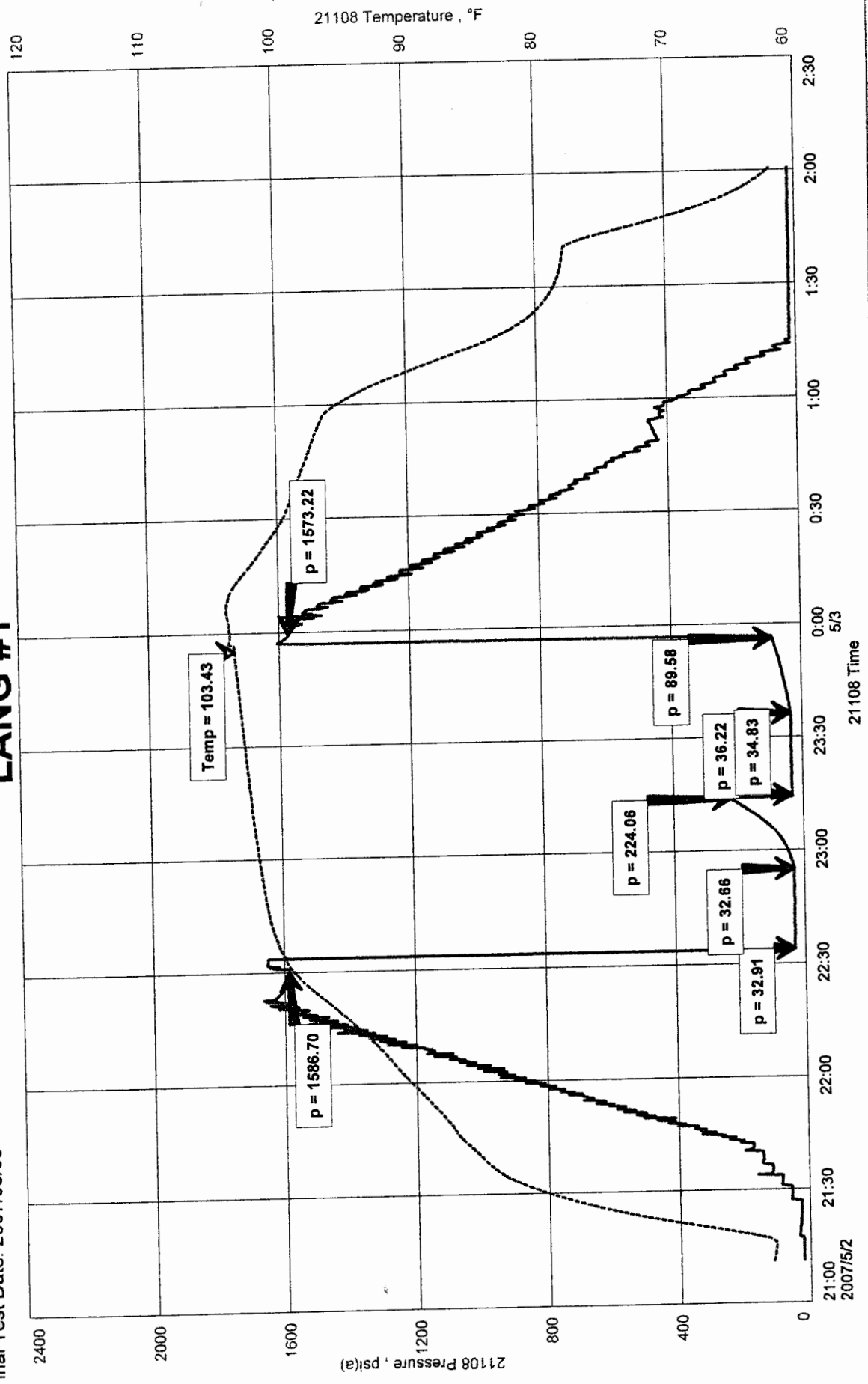
Qualified By: JIM MUSGROVE

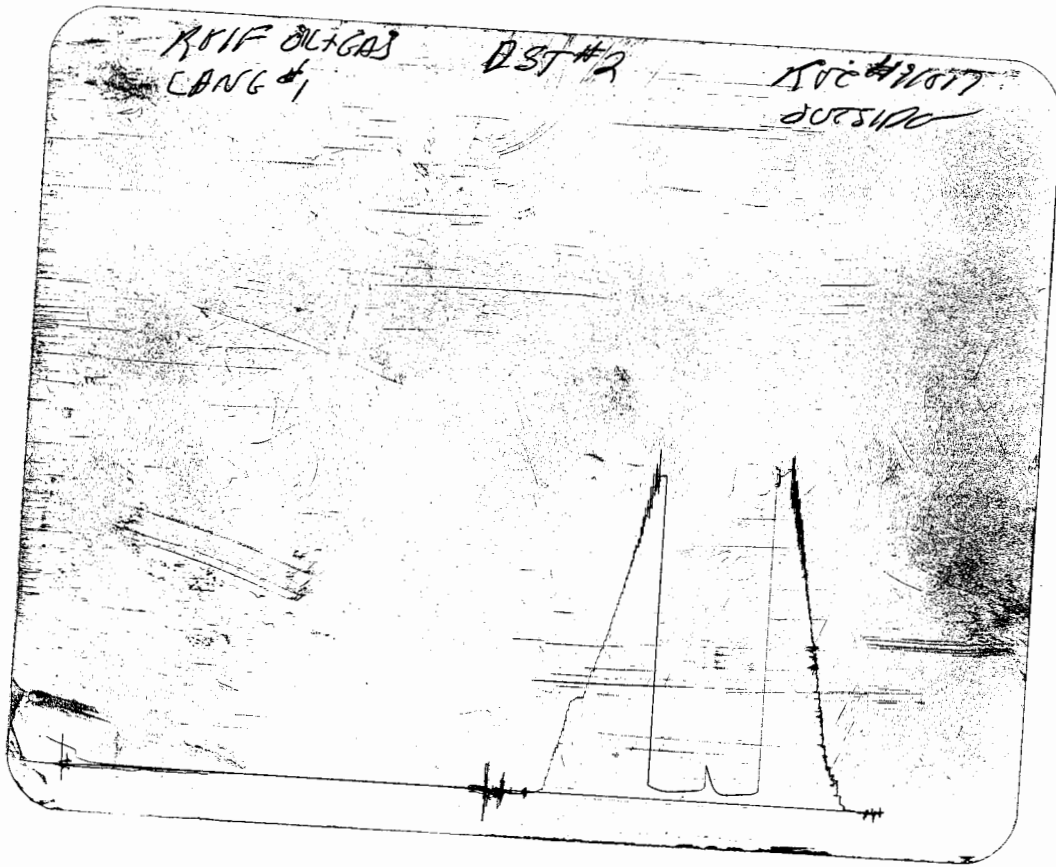
RECOVEY: 15/ MUDDY OIL IN DRILL COLLAR

LANG #1
Formation: MARMATON
Job Number: D460

LANG #1

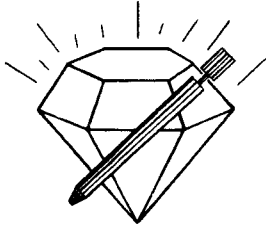
REIF OIL+GAS CO. LLC
DST #2 3330 TO 3389
Start Test Date: 2007/05/02
Final Test Date: 2007/05/03





This is an actual photograph of recorder chart.

POINT	PRESSURE		Elec. Office Reading
	Field Reading	Office Reading	
(A) Initial Hydrostatic Mud	1587	1587	PSI
(B) First Initial Flow Pressure.....	33	33	PSI
(C) First Final Flow Pressure	33	33	PSI
(D) Initial Closed-in Pressure	224	224	PSI
(E) Second Initial Flow Pressure	35	35	PSI
(F) Second Final Flow Pressure.....	36	36	PSI
(G) Final Closed-in Pressure.....	90	90	PSI
(H) Final Hydrostatic Mud	1573	1573	PSI



DIAMOND TESTING

P.O. Box 157
HOISINGTON, KANSAS 67544
(620) 653-7550 • (800) 542-7313
STC 21108.D461

Company Reif Oil & Gas Co., LLC Lease & Well No. Lang No. 1

Elevation 1947 KB Formation Arbuckle Effective Pay -- Ft. Ticket No. J2065

Date 5-3-07 Sec. 4 Twp. 17S Range 13W County Barton State Kansas

Test Approved By Jim Musgrove Diamond Representative John C. Riedl

Formation Test No. 3 Interval Tested from 3,371 ft. to 3,395 ft. Total Depth 3,395 ft.

Packer Depth 3,366 ft. Size 6 3/4 in. Packer Depth -- ft. Size -- in.

Packer Depth 3,371 ft. Size 6 3/4 in. Packer Depth -- ft. Size -- in.

Depth of Selective Zone Set ft.

Top Recorder Depth (Inside) 3,374 ft. Recorder Number 21108 Cap. 5,000 psi

Bottom Recorder Depth (Outside) 3,392 ft. Recorder Number 11017 Cap. 4,000 psi

Below Straddle Recorder Depth ft. Recorder Number Cap. psi

Drilling Contractor Sterling Drilling Company - Rig 1 Drill Collar Length 250 ft. I.D. 2 1/4 in.

Mud Type Chemical Viscosity 45 Weight Pipe Length -- ft. I.D. -- in.

Weight 9.1 Water Loss 10.5 cc. Drill Pipe Length 3,101 ft. I.D. 3 1/2 in.

Chlorides 10,000 P.P.M. Test Tool Length 20 ft. Tool Size 3 1/2 - IF in.

Jars: Make Bowen Serial Number Not Run Anchor Length 24 ft. Size 4 1/2 - FH in.

Did Well Flow? No Reversed Out No Surface Choke Size 1 in. Bottom Choke Size 5/8 in.

Main Hole Size 7 7/8 in. Tool Joint Size 4 1/2 - XH in.

Blow: 1st Open: Strong blow. Off bottom of bucket in 5 mins. Weak, 1/2 in., blow back during shut-in.

2nd Open: Strong blow. Off bottom of bucket in 4 1/2 mins. No blow back during shut-in.

Recovered 30 ft. of gas in pipe

Recovered 670 ft. of clean gassy oil = 8.864400 bbls. (Grind out: 10%-gas; 90%-oil) Gravity: 37 @ 60°

Recovered 180 ft. of mud cut gassy oil = .885600 bbls. (Grind out: 25%-mud; 20%-gas; 55%-oil)

Recovered 850 ft. of TOTAL FLUID = 9.750000 bbls.

Recovered ft. of

Remarks

Time Set Packer(s) 9:45 AM Time Started Off Bottom 11:25 AM Maximum Temperature 114°

Initial Hydrostatic Pressure (A) 1659 P.S.I.

Initial Flow Period Minutes 20 (B) 66 P.S.I. to (C) 223 P.S.I.

Initial Closed In Period Minutes 30 (D) 1071 P.S.I.

Final Flow Period Minutes 20 (E) 234 P.S.I. to (F) 343 P.S.I.

Final Closed In Period Minutes 30 (G) 1038 P.S.I.

Final Hydrostatic Pressure (H) 1609 P.S.I.

GENERAL INFORMATION

Client Information:

Company: REIF OIL+GAS CO. INC

Contact: DON REIF

Phone: Fax: e-mail:

Site Information:

Contact: JIM MUSGROVE

Phone: Fax: e-mail:

Well Information:

Name: LANG #1

Operator: REIF OIL+GAS CO. INC

Location-Downhole: DST #3 3371 TO 3395

Location-Surface: S4/17S/13W BARTON COUNTY

Test Information:

Company: DIAMOND TESTING

Representative: JOHN RIEDL

Supervisor: JIM MUSGROVE

Test Type: CONVENTIONAL

Job Number: D461

Test Unit: 2

Start Date: 2007/05/03

Start Time: 08:30:00

End Date: 2007/05/03

End Time: 14:25:00

Report Date: 2007/05/03

Prepared By: JOHN RIEDL

Remarks:

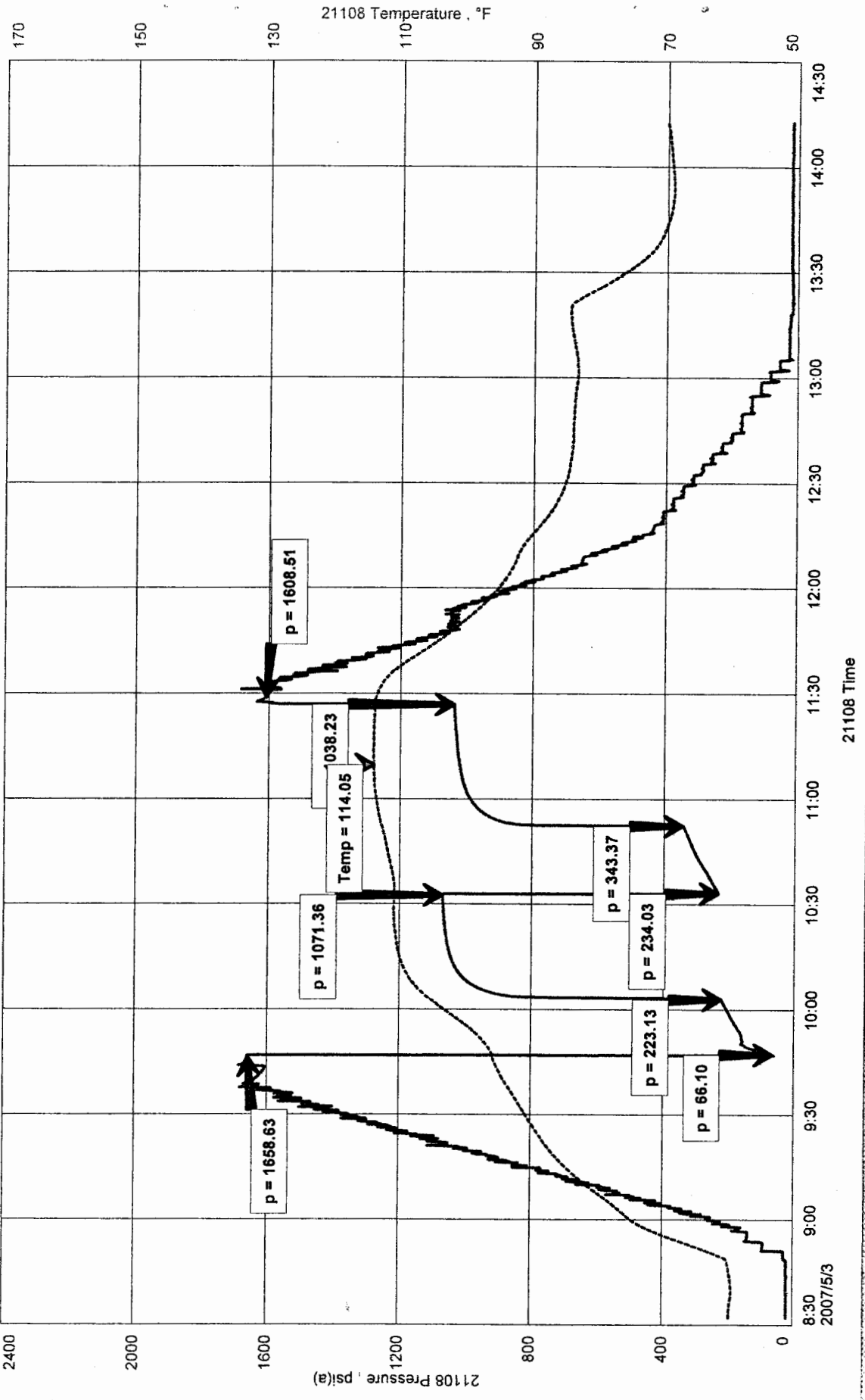
Qualified By: JIM MUSGROVE

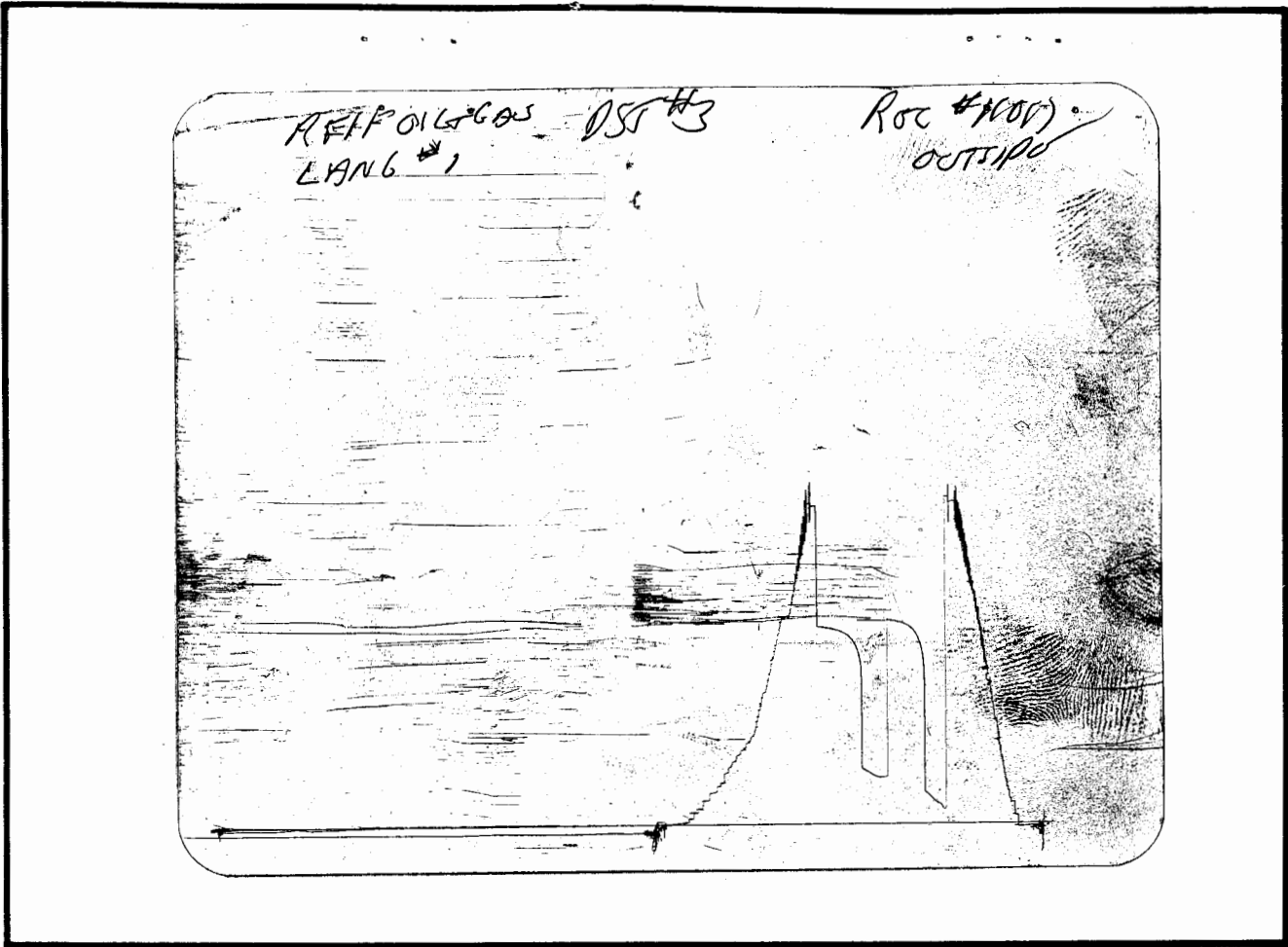
REC: 30' GAS IN PIPE
670' CLEAN GASSY OIL
180' MUDCUT GASSY OIL
850' TOTAL FLUID RECOVERY

LANG #1
 Formation: ARBUCKLE
 Job Number: D461

REIF OIL+GAS CO. INC
 DST #3 3371 TO 3395
 Start Test Date: 2007/05/03
 Final Test Date: 2007/05/03

LANG #1





This is an actual photograph of recorder chart.

POINT	PRESSURE		PSI
	Field Reading	Elec. Office Reading	
(A) Initial Hydrostatic Mud	1659	1659	PSI
(B) First Initial Flow Pressure.....	66	66	PSI
(C) First Final Flow Pressure	223	223	PSI
(D) Initial Closed-in Pressure	1071	1071	PSI
(E) Second Initial Flow Pressure.....	234	234	PSI
(F) Second Final Flow Pressure.....	343	343	PSI
(G) Final Closed-in Pressure.....	1038	1038	PSI
(H) Final Hydrostatic Mud.....	1609	1609	PSI