

15-009-25223



DIAMOND TESTING

P.O. Box 157

HOISINGTON, KANSAS 67544

(620) 653-7550 • (800) 542-7313

Company Reif Oil & Gas Co., LLC Lease & Well No. Lang No. 2
Elevation 1953 KB Formation Lansing/Kansas City "A" - "F" Effective Pay -- Ft. Ticket No. C 75
Date 7-13-08 Sec. 4 Twp. 17S Range 13W County Barton State Kansas
Test Approved By Jim Musgrove Diamond Representative Chris Redetzke

Formation Test No. 1 Interval Tested from 3,180 ft. to 3,246 ft. Total Depth 3,246 ft.
Packer Depth 3,175 ft. Size 6 3/4 in. Packer Depth -- ft. Size -- in.
Packer Depth 3,180 ft. Size 6 3/4 in. Packer Depth -- ft. Size -- in.
Depth of Selective Zone Set -- ft.

Top Recorder Depth (Inside) 3,183 ft. Recorder Number 30035 Cap. 5,000 psi
Bottom Recorder Depth (Outside) 3,243 ft. Recorder Number 13387 Cap. 4,000 psi
Below Straddle Recorder Depth -- ft. Recorder Number -- Cap. -- psi

Drilling Contractor Royal Drilling, Inc. - Rig 1 Drill Collar Length 30 ft. I.D. 2 1/4 in.
Mud Type Chemical Viscosity 53 Weight Pipe Length -- ft. I.D. -- in.
Weight 8.9 Water Loss 10.4 cc. Drill Pipe Length 3,130 ft. I.D. 3 1/2 in.
Chlorides 9,000 P.P.M. Test Tool Length 20 ft. Tool Size 3 1/2 - IF in.
Jars: Make Sterling Serial Number Not Run Anchor Length 66 ft. Size 4 1/2 - FH in.
Did Well Flow? No Reversed Out No Surface Choke Size 1 in. Bottom Choke Size 5/8 in.
Main Hole Size 7 7/8 in. Tool Joint Size 4 1/2 - XH in.

Blow: 1st Open: Weak surface blow. No blow back during shut-in.
2nd Open: Weak surface blow. No blow back during shut-in.

Recovered 15 ft. of mud - .073800 bbls. (Grind out: 100%-mud)
Recovered -- ft. of
Recovered -- ft. of
Recovered -- ft. of
Recovered -- ft. of

Remarks Tool Sample Grind Out: Mud with a scum of oil

Time Set Packer(s) 4:37 P.M. Time Started Off Bottom 5:37 P.M. Maximum Temperature 101°
Initial Hydrostatic Pressure (A) 1562 P.S.I.
Initial Flow Period Minutes 15 (B) 26 P.S.I. to (C) 32 P.S.I.
Initial Closed In Period Minutes 15 (D) 398 P.S.I.
Final Flow Period Minutes 15 (E) 34 P.S.I. to (F) 38 P.S.I.
Final Closed In Period Minutes 15 (G) 105 P.S.I.
Final Hydrostatic Pressure (H) 1515 P.S.I.

GENERAL INFORMATION

Client Information:

Company: REIF OIL & GAS CO.

Contact: DON REIF

Phone: Fax: e-mail:

Site Information:

Contact: JIM MUSGROVE

Phone: Fax: e-mail:

Well Information:

Name: LANG

Operator: REIF OIL & GAS

Location-Downhole: DST #1 LKC 'A-F' 3,180 - 3,246

Location-Surface: sec 4-17S-13W BARTON COUNTY

Test Information:

Company: DIAMOND TESTING

Representative: CHRIS

Supervisor: JIM MUSGROVE

Test Type: CONVENTIONAL Job Number:

Test Unit: NO. 1

Start Date: 2008/07/13 Start Time: 14:30:00

End Date: 2008/07/13 End Time: 19:23:00

Report Date: Prepared By:

Remarks: Qualified By:

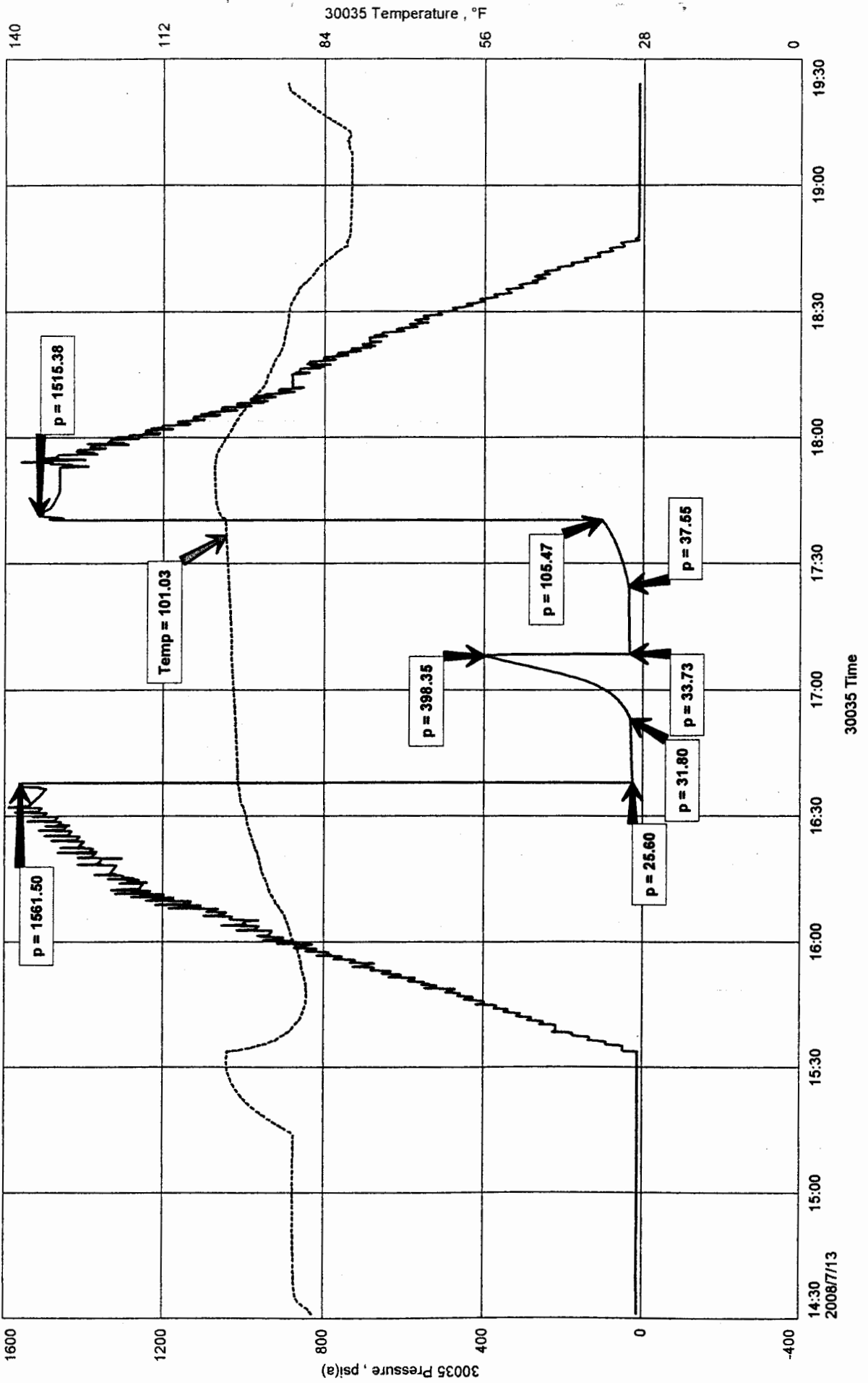
RECOVERED: 15' MUD 100% MUD

TOOL SAMPLE: 100% MUD WITH A SCUM OF OIL

REIF OIL & GAS CO.
 DST #1 LKC 'A-F' 3,180 - 3,246
 Start Test Date: 2008/07/13
 Final Test Date: 2008/07/13

LANG
 Formation: DST #1 LKC 'A-F' 3,180 - 3,246
 Pool: WILDCAT

LANG



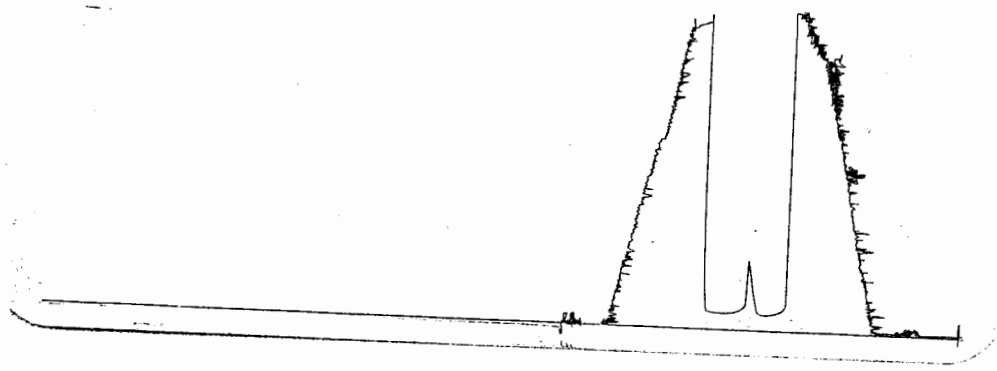
DST #1

outside 13387

3180-3246

LKC A-F

Loc. 324.3



This is an actual photograph of recorder chart.

POINT	PRESSURE		Elec. Office Reading	PSI
	Field Reading			
(A) Initial Hydrostatic Mud	1562	1562		PSI
(B) First Initial Flow Pressure	26	26		PSI
(C) First Final Flow Pressure	32	32		PSI
(D) Initial Closed-in Pressure	398	398		PSI
(E) Second Initial Flow Pressure	34	34		PSI
(F) Second Final Flow Pressure	38	38		PSI
(G) Final Closed-in Pressure	105	105		PSI
(H) Final Hydrostatic Mud	1515	1515		PSI



DIAMOND TESTING

P.O. Box 157
HOISINGTON, KANSAS 67544
(620) 653-7550 • (800) 542-7313

Company Reif Oil & Gas Co., LLC Lease & Well No. Lang No. 2
Elevation 1953 KB Formation Arbuckle Effective Pay -- Ft. Ticket No. C 76
Date 7-14-08 Sec. 4 Twp. 17S Range 13W County Barton State Kansas
Test Approved By Jim Musgrove Diamond Representative Chris Redetzke

Formation Test No. 2 Interval Tested from 3,376 ft. to 3,397 ft. Total Depth 3,397 ft.
Packer Depth 3,371 ft. Size 6 3/4 in. Packer Depth -- ft. Size -- in.
Packer Depth 3,376 ft. Size 6 3/4 in. Packer Depth -- ft. Size -- in.
Depth of Selective Zone Set ft.

Top Recorder Depth (Inside) 3,379 ft. Recorder Number 30035 Cap. 5,000 psi
Bottom Recorder Depth (Outside) 3,394 ft. Recorder Number 13387 Cap. 4,000 psi
Below Straddle Recorder Depth ft. Recorder Number Cap. psi

Drilling Contractor Royal Drilling, Inc. - Rig 1 Drill Collar Length 30 ft. I.D. 2 1/4 in.
Mud Type Chemical Viscosity 50 Weight Pipe Length -- ft. I.D. -- in.
Weight 9.2 Water Loss 12.8 cc. Drill Pipe Length 3,326 ft. I.D. 3 1/2 in.
Chlorides 10,000 P.P.M. Test Tool Length 20 ft. Tool Size 3 1/2 - IF in.
Jars: Make Sterling Serial Number Not Run Anchor Length 21 ft. Size 4 1/2 - FH in.
Did Well Flow? No Reversed Out No Surface Choke Size 1 in. Bottom Choke Size 5/8 in.
Main Hole Size 7 7/8 in. Tool Joint Size 4 1/2 - XH in.

Blow: 1st Open: Fair, 1/2 in., blow increasing. Off bottom of bucket in 30 mins. No blow back during shut-in.
2nd Open: Fair, 1/2 in., blow increasing to 10 1/2 ins. No blow back during shut-in.

Recovered 60 ft. of gas in pipe
Recovered 165 ft. of clean gassy oil = 1.966000 bbls. (Gravity: 37 @ 60°)
Recovered 10 ft. of mud cut gassy oil = .049200 bbls.
Recovered 175 ft. of TOTAL FLUID = 2.015200 bbls.
Recovered ft. of
Remarks Tool Sample Grind Out: clean gassy oil

Time Set Packer(s) 10:42 ~~P.M.~~ ^{A.M.} Time Started Off Bottom 1:07 ~~P.M.~~ ^{A.M.} Maximum Temperature 112°
Initial Hydrostatic Pressure (A) 1736 P.S.I.
Initial Flow Period Minutes 35 (B) 27 P.S.I. to (C) 64 P.S.I.
Initial Closed In Period Minutes 30 (D) 1080 P.S.I.
Final Flow Period Minutes 35 (E) 66 P.S.I. to (F) 92 P.S.I.
Final Closed In Period Minutes 45 (G) 1090 P.S.I.
Final Hydrostatic Pressure (H) 1625 P.S.I.

GENERAL INFORMATION

Client Information:

Company: REIF OIL & GAS CO.

Contact: DON REIF

Phone: Fax: e-mail:

Site Information:

Contact: JIM MUSGROVE

Phone: Fax: e-mail:

Well Information:

Name: LANG

Operator: REIF OIL & GAS CO.

Location-Downhole: DST #2 ARBUCKLE 3,376 - 3,397

Location-Surface: sec 4-17S-13W BARTON COUNTY

Test Information:

Company: DIAMOND TESTING

Representative: CHRIS

Supervisor: JIM MUSGROVE

Test Type: CONVENTIONAL Job Number:

Test Unit: NO. 1

Start Date: 2008/07/14 Start Time: 09:08:00

End Date: 2008/07/14 End Time: 14:54:00

Report Date: Prepared By:

Remarks: Qualified By:

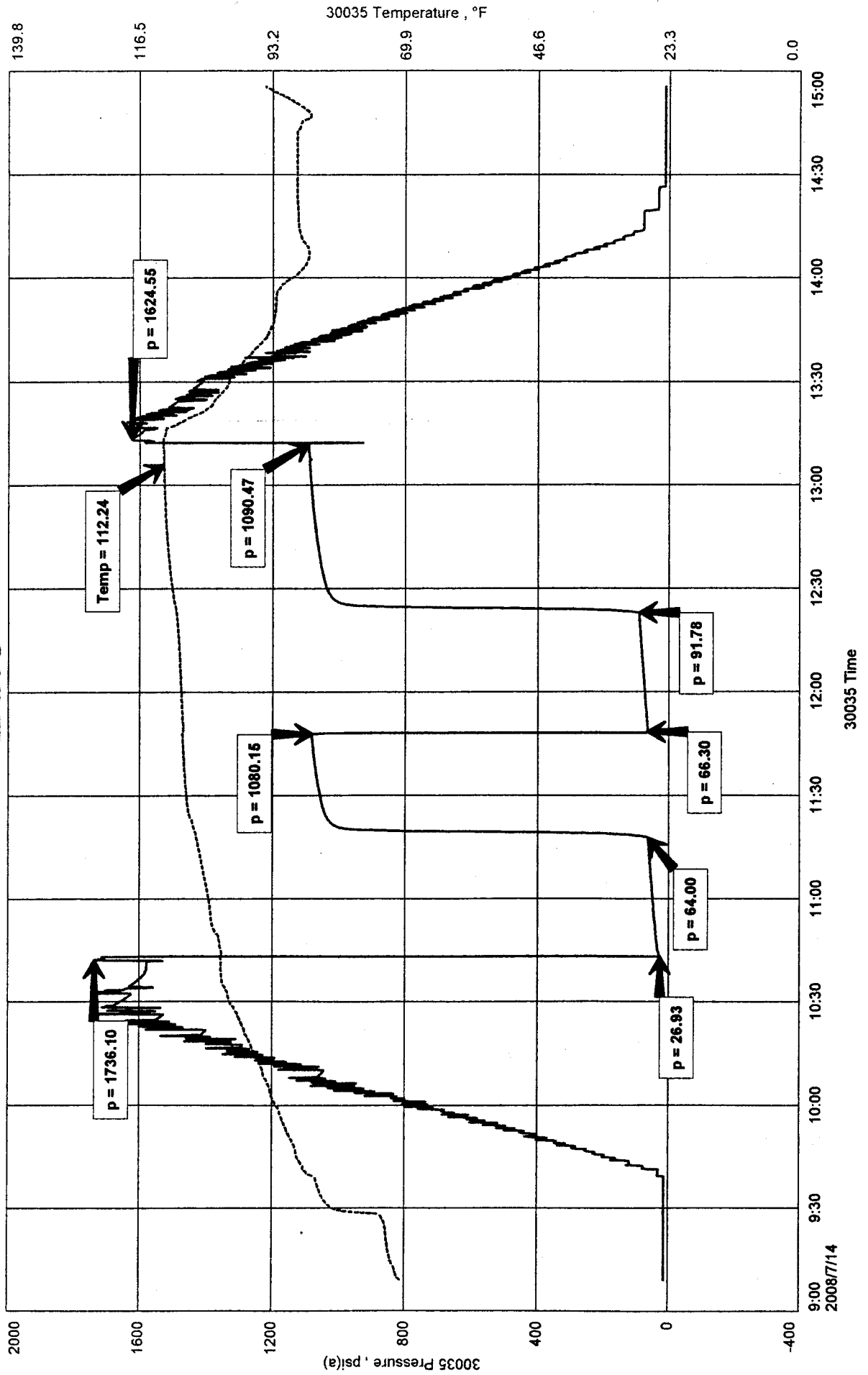
RECOVERED: 60' G.I.P.
165' CLEAN GASY OIL
10' MUD CUT GASY OIL
175' TOTAL FLUID

TOOL SAMPLE: CLEAN GASY OIL

REIF OIL & GAS CO.
 DST #2 ARBUCKLE 3,376 - 3,397
 Start Test Date: 2008/07/14
 Final Test Date: 2008/07/14

LANG
 Formation: DST #2 ARBUCKLE 3,376 - 3,397
 Pool: WILDCAT

LANG



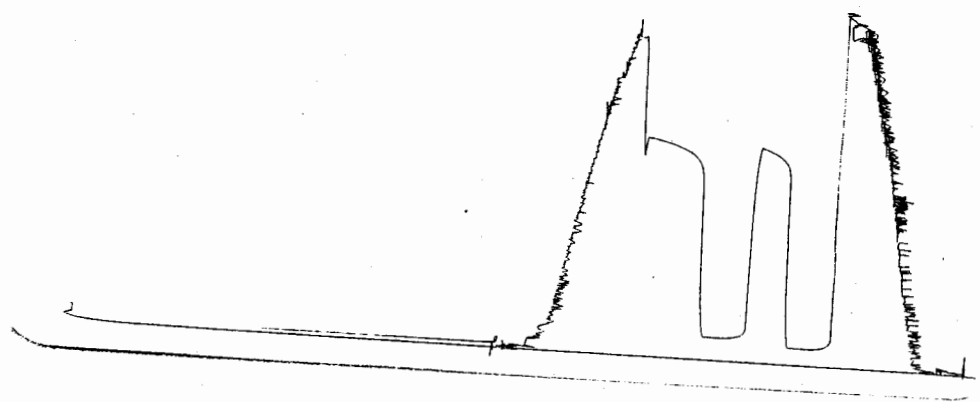
DST #2

Outside 13387

3376-3397

Arbuckle

Loc. 3394



This is an actual photograph of recorder chart.

POINT	PRESSURE		PSI
	Field Reading	Elec. Office Reading	
(A) Initial Hydrostatic Mud	1736	1736	PSI
(B) First Initial Flow Pressure.....	27	27	PSI
(C) First Final Flow Pressure	64	64	PSI
(D) Initial Closed-in Pressure	1080	1080	PSI
(E) Second Initial Flow Pressure	66	66	PSI
(F) Second Final Flow Pressure.....	92	92	PSI
(G) Final Closed-in Pressure.....	1090	1090	PSI
(H) Final Hydrostatic Mud	1625	1625	PSI