



DIAMOND TESTING
P.O. Box 157
HOISINGTON, KANSAS 67544
(620) 653-7550 • (800) 542-7313
STC 21108.D322

4-17s-14w
15-009-24970

Company Globe Operating, Inc. Lease & Well No. Christians No. 1
Elevation 1980KB Formation Lansing "A" & "B" Effective Pay -- Ft. Ticket No. J1927
Date 9-06-06 Sec. 4 Twp. 17S Range 14W County Barton State Kansas
Test Approved By Richard Stalcup Diamond Representative John C. Riedl

Formation Test No. 1 Interval Tested from 3,218 ft. to 3,246 ft. Total Depth 3,246 ft.
Packer Depth 3,213 ft. Size 6 3/4 in. Packer Depth -- ft. Size -- in.
Packer Depth 3,218 ft. Size 6 3/4 in. Packer Depth -- ft. Size -- in.
Depth of Selective Zone Set -- ft.

Top Recorder Depth (Inside) 3,221 ft. Recorder Number 21108 Cap. 5,000 psi
Bottom Recorder Depth (Outside) 3,243 ft. Recorder Number 11017 Cap. 4,000 psi
Below Straddle Recorder Depth -- ft. Recorder Number -- Cap. -- psi

Drilling Contractor Discovery Drilling - Rig 2 Drill Collar Length -- ft. I.D. -- in.
Mud Type Chemical Viscosity 55 Weight Pipe Length -- ft. I.D. -- in.
Weight 8.9 Water Loss 9.2 cc. Drill Pipe Length 3,198 ft. I.D. 3 1/2 in.
Chlorides 1,500 P.P.M. Test Tool Length 20 ft. Tool Size 3 1/2 - JF in.
Jars: Make Bowen Serial Number Not Run Anchor Length 28 ft. Size 4 1/2 - FH in.
Did Well Flow? No Reversed Out No Surface Choke Size 1 in. Bottom Choke Size 5/8 in.
Main Hole Size 7 7/8 in. Tool Joint Size 4 1/2 - XH in.

Blow: 1st Open: Weak blow. Dead in 10 mins.
2nd Open: No blow.

Recovered 5 ft. of drilling mud with oil specks in tool = .071000 bbls.

Recovered -- ft. of --

Recovered -- ft. of --

Recovered -- ft. of --

Recovered -- ft. of --

Remarks KCC WICHITA

Time Set Packer(s) 5:00 ~~P.M.~~ ^{A.M.} Time Started Off Bottom 7:00 ~~P.M.~~ ^{A.M.} Maximum Temperature 99°
Initial Hydrostatic Pressure (A) 1546 P.S.I.
Initial Flow Period Minutes 30 (B) 29 P.S.I. to (C) 31 P.S.I.
Initial Closed In Period Minutes 30 (D) 783 P.S.I.
Final Flow Period Minutes 30 (E) 32 P.S.I. to (F) 32 P.S.I.
Final Closed In Period Minutes 30 (G) 741 P.S.I.
Final Hydrostatic Pressure (H) 1531 P.S.I.

RECEIVED

OCT 30 2006

GENERAL INFORMATION

Client Information:

Company: GLOBE OPERATING INC

Contact: RICHARD STALCUP

Phone: Fax: e-mail:

Site Information:

Contact: JOSH AUSTIN

Phone: Fax: e-mail:

Well Information:

Name: CHRISTIANS #1

Operator: GLOBE OPERATING INC

Location-Downhole: DST #1 3218 TO 3246

Location-Surface: S4/17S/14W BARTON COUNTY

Test Information:

Company: DIAMOND TESTING

Representative: JOHN RIEDL

Supervisor: JOSH AUSTIN

Test Type: CONVENTIONAL Job Number: D322

Test Unit: 2

Start Date: 2006/09/06 Start Time: 03:40:00

End Date: 2006/09/06 End Time: 08:35:00

Report Date: 2006/09/06 Prepared By: JOHN RIEDL

Remarks: Qualified By: RICHARD STALCUP

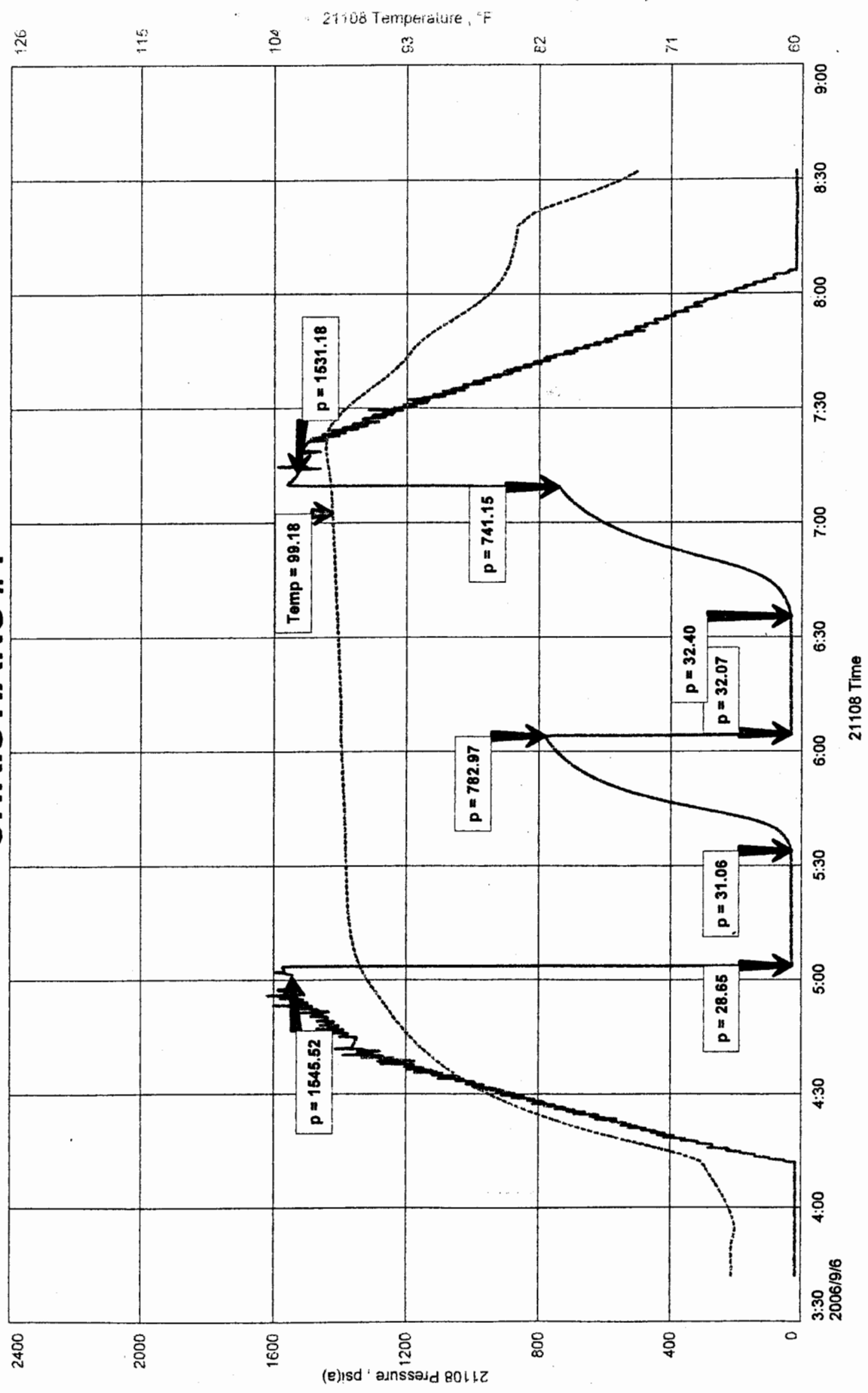
RECOVERY: 5' DRILLING MUD (WITH OIL SPECKS IN TOOL)

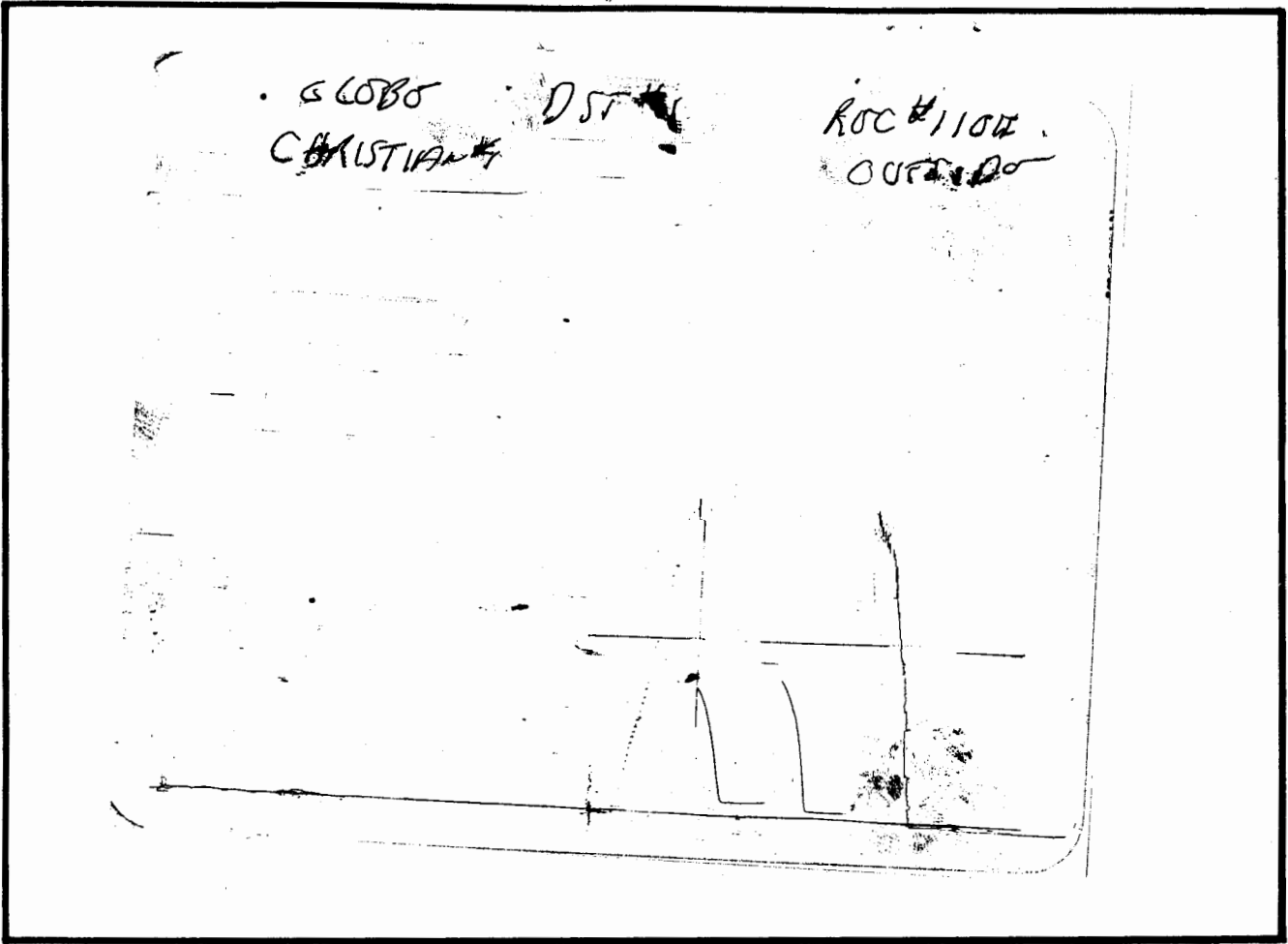
RECEIVED
OCT 30 2006
KCC WICHITA

GLOBE OPERATING INC
 DST #1 3218 TO 3246
 Start Test Date: 2006/09/06
 Final Test Date: 2006/09/06

CHRISTIANS #1
 Formation: LANSING "A+B"
 Job Number: D322

CHRISTIANS #1





This is an actual photograph of recorder chart.

POINT	PRESSURE		Elec. Office Reading	PSI
	Field Reading	Office Reading		
(A) Initial Hydrostatic Mud	1546	1546		PSI
(B) First Initial Flow Pressure.....	29	29		PSI
(C) First Final Flow Pressure	31	31		PSI
(D) Initial Closed-in Pressure	783	783		PSI
(E) Second Initial Flow Pressure.....	32	32		PSI
(F) Second Final Flow Pressure.....	32	32		PSI
(G) Final Closed-in Pressure.....	741	741		PSI
(H) Final Hydrostatic Mud.....	1531	1531		PSI



DIAMOND TESTING
P.O. Box 157
HOISINGTON, KANSAS 67544
(620) 653-7550 • (800) 542-7313
STC 21108.D323

Company Globe Operating, Inc. Lease & Well No. Christians No. 1
Elevation 1980KB Formation Lansing "H" - "I" Effective Pay -- Ft. Ticket No. J1928
Date 9-06-06 Sec. 4 Twp. 17S Range 14W County Barton State Kansas
Test Approved By Josh Austin Diamond Representative John C. Riedl

Formation Test No. 2 Interval Tested from 3,330 ft. to 3,400 ft. Total Depth 3,400 ft.
Packer Depth 3,325 ft. Size 6 3/4 in. Packer Depth -- ft. Size -- in.
Packer Depth 3,330 ft. Size 6 3/4 in. Packer Depth -- ft. Size -- in.
Depth of Selective Zone Set ft.

Top Recorder Depth (Inside) 3,333 ft. Recorder Number 21108 Cap. 5,000 psi
Bottom Recorder Depth (Outside) 3,397 ft. Recorder Number 11017 Cap. 4,000 psi
Below Straddle Recorder Depth ft. Recorder Number Cap. psi

Drilling Contractor Discovery Drilling - Rig 2 Drill Collar Length -- ft. I.D. -- in.
Mud Type Chemical Viscosity 44 Weight Pipe Length -- ft. I.D. -- in.
Weight 9.2 Water Loss 11.4 cc. Drill Pipe Length 3,310 ft. I.D. 3 1/2 in.
Chlorides 2,500 P.P.M. Test Tool Length 20 ft. Tool Size 3 1/2 - JF in.
Jars: Make Bowen Serial Number Not Run Anchor Length 70 ft. Size 4 1/2 - FH in.
Did Well Flow? No Reversed Out No Surface Choke Size 1 in. Bottom Choke Size 5/8 in.
Main Hole Size 7 7/8 in. Tool Joint Size 4 1/2 - XH in.

Blow: 1st Open: Weak blow, slowly building to 2 ins.
2nd Open: Good blow, slowly building to 5 ins.

Recovered 90 ft. of gas in pipe
Recovered 35 ft. of slightly oil cut gassy mud = .497000 bbls. (Grind out: 3%-oil; 10%-gas; 87%-mud)
Recovered 35 ft. of TOTAL FLUID = .497000 bbls.
Recovered ft. of
Recovered ft. of

Remarks

Time Set Packer(s) 10:17 ~~P.M.~~ ^{A.M.} Time Started Off Bottom 12:47 ~~P.M.~~ ^{A.M.} Maximum Temperature 101°
Initial Hydrostatic Pressure (A) 1638 P.S.I.
Initial Flow Period Minutes 30 (B) 34 P.S.I. to (C) 42 P.S.I.
Initial Closed In Period Minutes 30 (D) 247 P.S.I.
Final Flow Period Minutes 45 (E) 40 P.S.I. to (F) 51 P.S.I.
Final Closed In Period Minutes 45 (G) 256 P.S.I.
Final Hydrostatic Pressure (H) 1619 P.S.I.

RECEIVED
OCT 30 2006
KCC WICHITA

GENERAL INFORMATION

Client Information:

Company: GLOBE OPERATING INC

Contact: RICHARD STALCUP

Phone: Fax: e-mail:

Site Information:

Contact: JOSH AUSTIN

Phone: Fax: e-mail:

Well Information:

Name: CHRISTIANS #1

Operator: GLOBE OPERATING INC

Location-Downhole: DST #2 3330 TO 3400

Location-Surface: S4/17S/14W BARTON COUNTY

Test Information:

Company: DIAMOND TESTING

Representative: JOHN RIEDL

Supervisor: JOSH AUSTIN

Test Type: CONVENTIONAL Job Number: D323

Test Unit: 2

Start Date: 2006/09/06 Start Time: 20:50:00

End Date: 2006/09/07 End Time: 02:10:00

Report Date: 2006/09/07 Prepared By: JOHN RIEDL

Qualified By: JOSH AUSTIN

Remarks:

RECOVERY: 90' GAS IN PIPE
35' SLOGGM (3%OIL 10%GAS 87%MUD)

RECEIVED

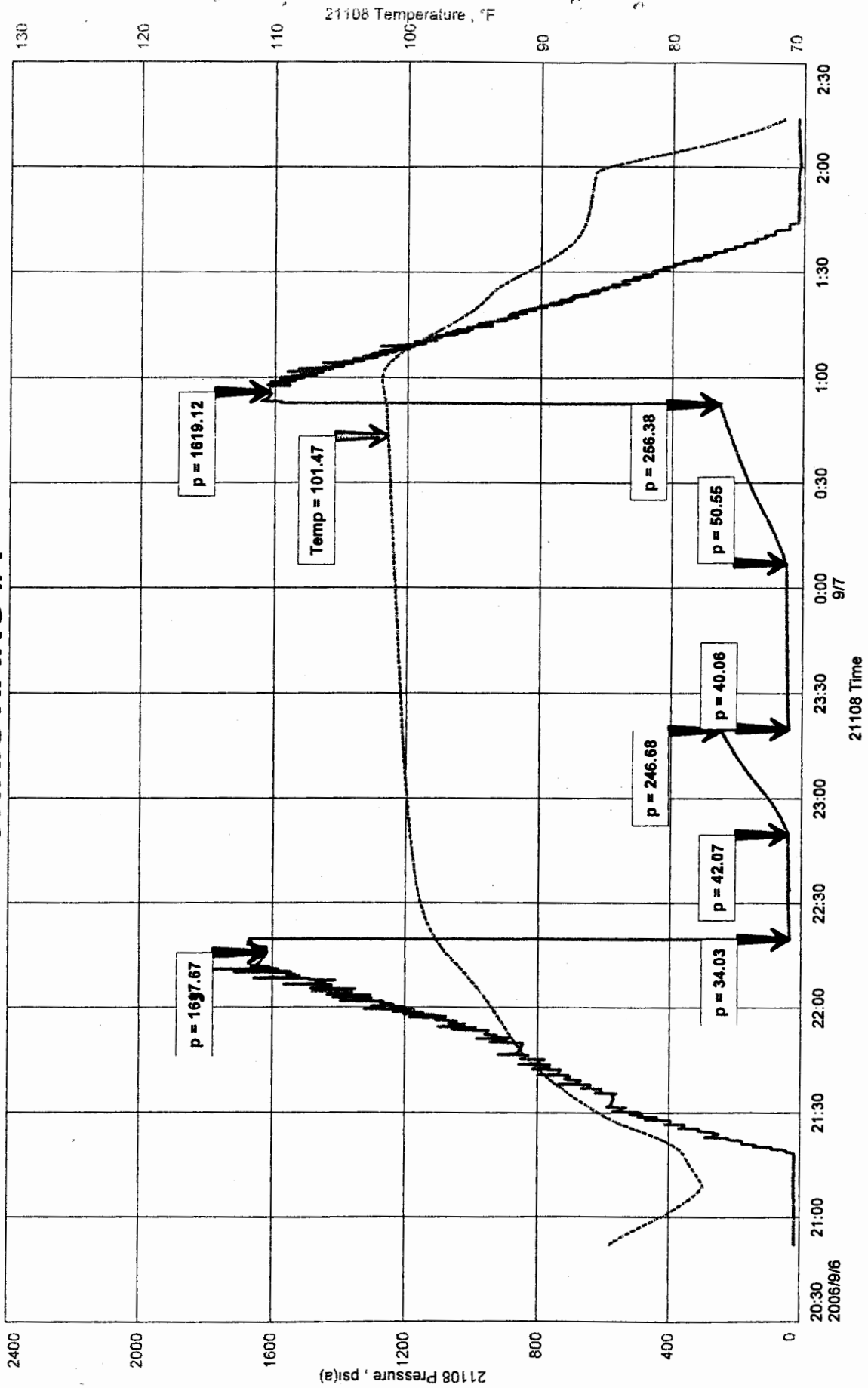
OCT 30 2006

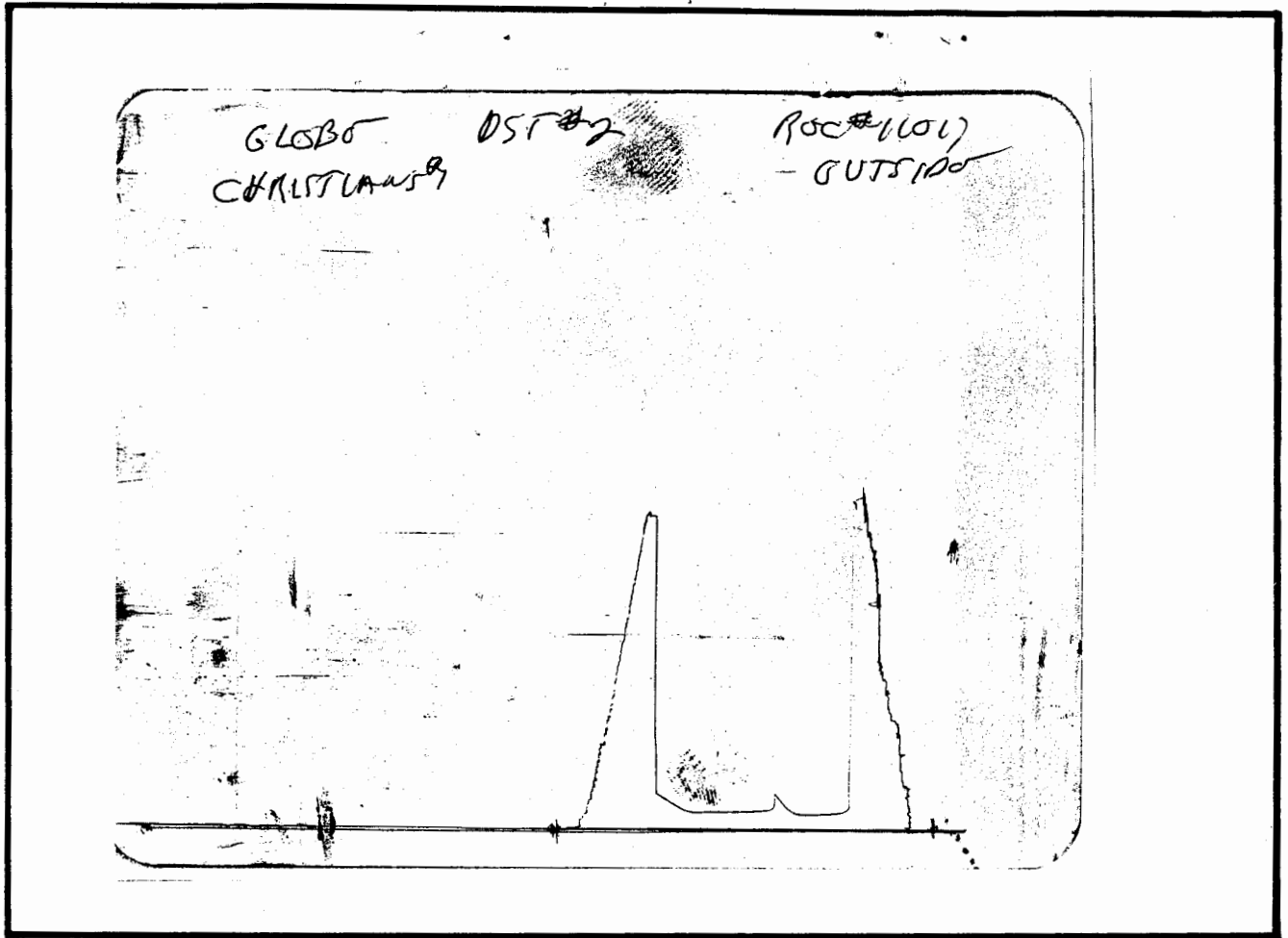
KCC WICHITA

GLOBE OPERATING INC
DST #2 3330 TO 3400
Start Test Date: 2006/09/06
Final Test Date: 2006/09/07

CHRISTIANS #1
Formation: LANSING "H+I"
Job Number: D323

CHRISTIANS #1





This is an actual photograph of recorder chart.

POINT	PRESSURE		Elec. Office Reading	PSI
	Field Reading			
(A) Initial Hydrostatic Mud	1638	1638		PSI
(B) First Initial Flow Pressure	34	34		PSI
(C) First Final Flow Pressure	42	42		PSI
(D) Initial Closed-in Pressure	247	247		PSI
(E) Second Initial Flow Pressure	40	40		PSI
(F) Second Final Flow Pressure	51	51		PSI
(G) Final Closed-in Pressure	256	256		PSI
(H) Final Hydrostatic Mud	1619	1619		PSI



DIAMOND TESTING
P.O. Box 157
HOISINGTON, KANSAS 67544
(620) 653-7550 • (800) 542-7313
STC 21108.D324

Company Globe Operating, Inc. Lease & Well No. Christians No. 1
Elevation 1980KB Formation Arbuckle Effective Pay -- Ft. Ticket No. J1929
Date 9-07-06 Sec. 4 Twp. 17S Range 14W County Barton State Kansas
Test Approved By Jim Musgrove Diamond Representative John C. Riedl

Formation Test No. 3 Interval Tested from 3,414 ft. to 3,484 ft. Total Depth 3,484 ft.
Packer Depth 3,409 ft. Size 6 3/4 in. Packer Depth -- ft. Size -- in.
Packer Depth 3,414 ft. Size 6 3/4 in. Packer Depth -- ft. Size -- in.
Depth of Selective Zone Set ft.

Top Recorder Depth (Inside) 3,417 ft. Recorder Number 21108 Cap. 5,000 psi
Bottom Recorder Depth (Outside) 3,481 ft. Recorder Number 11017 Cap. 4,000 psi
Below Straddle Recorder Depth ft. Recorder Number Cap. psi

Drilling Contractor Discovery Drilling - Rig 2 Drill Collar Length -- ft. I.D. -- in.
Mud Type Chemical Viscosity 57 Weight Pipe Length -- ft. I.D. -- in.
Weight 9.3 Water Loss 8.8 cc. Drill Pipe Length 3,394 ft. I.D. 3 1/2 in.
Chlorides 4,000 P.P.M. Test Tool Length 20 ft. Tool Size 3 1/2 - JF in.
Jars: Make Bowen Serial Number Not Run Anchor Length 70 ft. Size 4 1/2 - FH in.
Did Well Flow? No Reversed Out No Surface Choke Size 1 in. Bottom Choke Size 5/8 in.
Main Hole Size 7 7/8 in. Tool Joint Size 4 1/2 - XH in.

Blow: 1st Open: Strong, 8 in., blow. No blow back during shut-in.
2nd Open: Good, 6 in., blow. No blow back during shut-in.

Recovered 220 ft. of water cut mud with a show of oil in tool = 3.124000 bbls. (Grind out: 10%-water; 90%-mud)
Chlorides: 3,500 Ppm

Recovered ft. of
Recovered ft. of
Recovered ft. of
Recovered ft. of
Remarks

RECEIVED

OCT 30 2006

KCC WICHITA

Time Set Packer(s) 5:00 ~~AM~~ **PM** Time Started Off Bottom 7:30 ~~AM~~ **PM** Maximum Temperature 103°
Initial Hydrostatic Pressure (A) 1668 P.S.I.
Initial Flow Period Minutes 30 (B) 36 P.S.I. to (C) 78 P.S.I.
Initial Closed In Period Minutes 30 (D) 1100 P.S.I.
Final Flow Period Minutes 45 (E) 82 P.S.I. to (F) 131 P.S.I.
Final Closed In Period Minutes 45 (G) 1107 P.S.I.
Final Hydrostatic Pressure (H) 1645 P.S.I.

GENERAL INFORMATION

Client Information:

Company: GLOBE OPERATING INC

Contact: RICHARD STALCUP

Phone: Fax: e-mail:

Site Information:

Contact: JIM MUSGROVE

Phone: Fax: e-mail:

Well Information:

Name: CHRISTIANS #1

Operator: GLOBE OPERATING INC

Location-Downhole: DST #3 3414 TO 3484

Location-Surface: S4/17S/14W BARTON COUNTY

Test Information:

Company: DIAMOND TESTING

Representative: JOHN RIEDL

Supervisor: JIM MUSGROVE

Test Type: CONVENTIONAL Job Number: D324

Test Unit: 2

Start Date: 2006/09/07 Start Time: 15:33:00

End Date: 2006/09/07 End Time: 21:45:00

Report Date: 2006/09/07 Prepared By: JOHN RIEDL

Qualified By: JIM MUSGROVE

Remarks:

RECOVERY: 220' SLWCM (10%WATER 90%,MUD) CHLORIDES 3,500Ppm
SHOW OF OIL IN TOOL

RECEIVED

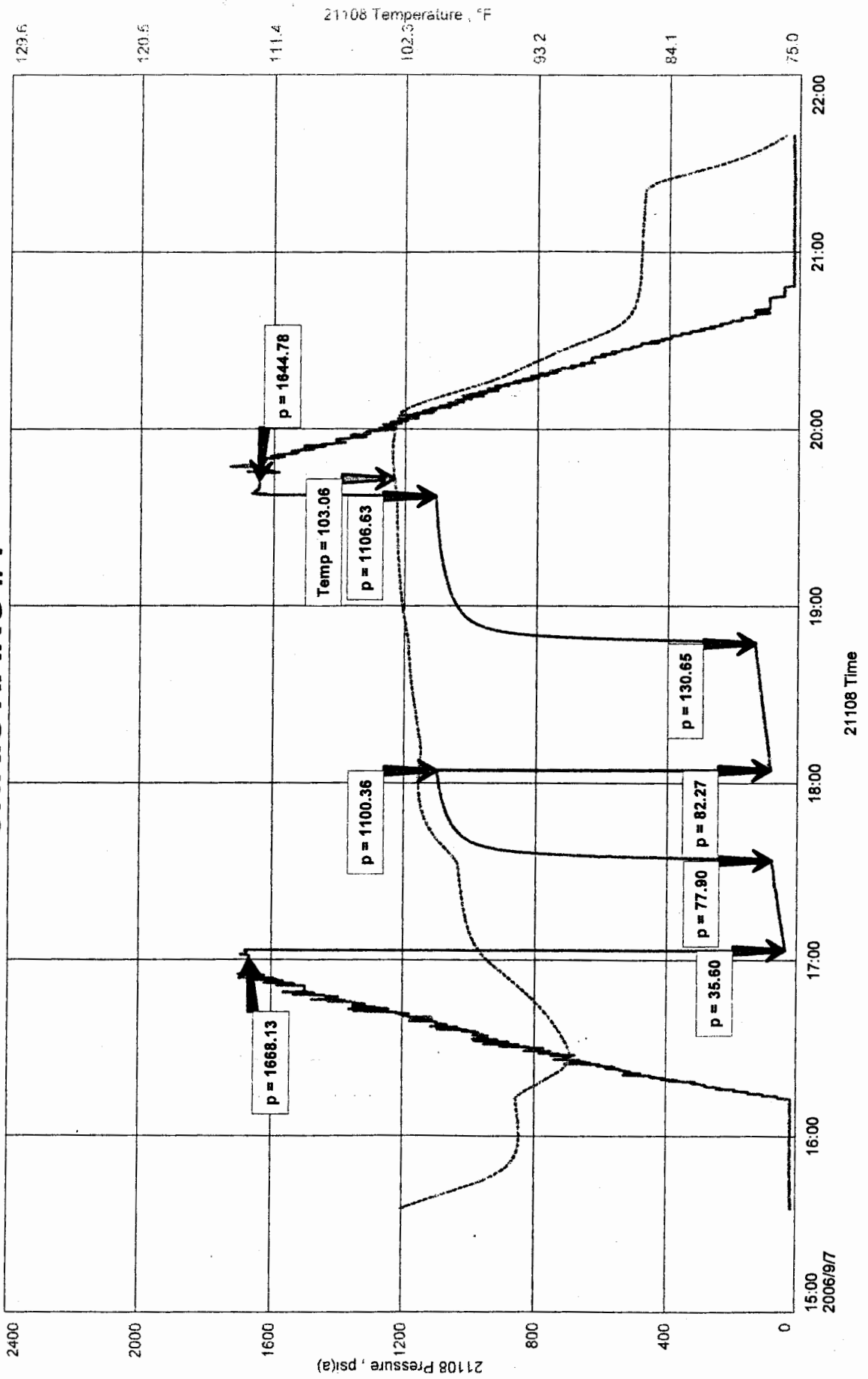
OCT 30 2006

KCC WICHITA

GLOBE OPERATING INC
 DST #3 3414 TO 3484
 Start Test Date: 2006/09/07
 Final Test Date: 2006/09/07

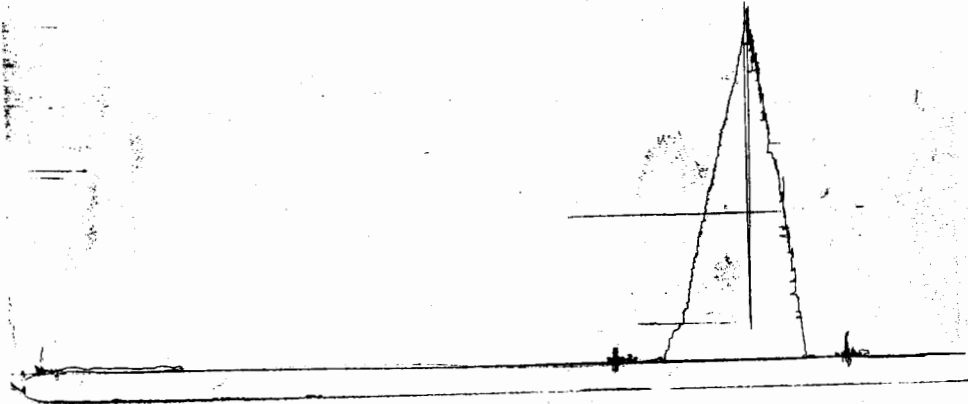
CHRISTIANS #1
 Formation: ARBUCKLE
 Job Number: D324

CHRISTIANS #1



GLOBE DST#3
 CHRISTIAN #1 BLOCK STATION

RSC 1107
 OUTSLIP



This is an actual photograph of recorder chart.

POINT	PRESSURE		Elec. Office Reading	PSI
	Field Reading	Office Reading		
(A) Initial Hydrostatic Mud	1668	1668		PSI
(B) First Initial Flow Pressure.....	36	36		PSI
(C) First Final Flow Pressure	78	78		PSI
(D) Initial Closed-in Pressure	1100	1100		PSI
(E) Second Initial Flow Pressure	82	82		PSI
(F) Second Final Flow Pressure.....	131	131		PSI
(G) Final Closed-in Pressure.....	1107	1107		PSI
(H) Final Hydrostatic Mud	1645	1645		PSI



DIAMOND TESTING

P.O. Box 157

HOISINGTON, KANSAS 67544

(620) 653-7550 • (800) 542-7313

STC 21108.D325

Page 1 of 2 Pages

Company Globe Operating, Inc. Lease & Well No. Christians No. 1
 Elevation 1980KB Formation Arbuckle Effective Pay -- Ft. Ticket No. J1930
 Date 9-08-06 Sec. 4 Twp. 17S Range 14W County Barton State Kansas
 Test Approved By Jim Musgrove Diamond Representative John C. Riedl

Formation Test No. 4 Interval Tested from 3,414 ft. to 3,490 ft. Total Depth 3,490 ft.
 Packer Depth 3,409 ft. Size 6 3/4 in. Packer Depth -- ft. Size -- in.
 Packer Depth 3,414 ft. Size 6 3/4 in. Packer Depth -- ft. Size -- in.
 Depth of Selective Zone Set ft.

Top Recorder Depth (Inside) 3,417 ft. Recorder Number 21108 Cap. 5,000 psi
 Bottom Recorder Depth (Outside) 3,487 ft. Recorder Number 11017 Cap. 4,000 psi
 Below Straddle Recorder Depth ft. Recorder Number Cap. psi

Drilling Contractor Discovery Drilling - Rig 2 Drill Collar Length -- ft. ID. -- in.
 Mud Type Chemical Viscosity 57 Weight Pipe Length -- ft. ID. -- in.
 Weight 9.3 Water Loss 8.8 cc. Drill Pipe Length 3,394 ft. ID. 3 1/2 in.
 Chlorides 5,000 P.P.M. Test Tool Length 20 ft. Tool Size 3 1/2 - IE in.
 Jars: Make Bowen Serial Number Not Run Anchor Length 76 ft. Size 4 1/2 - FH in.
 Did Well Flow? No Reversed Out No Surface Choke Size 1 in. Bottom Choke Size 5/8 in.
 Main Hole Size 7 7/8 in. Tool Joint Size 4 1/2 - XH in.

Blow: 1st Open: Strong blow. Off bottom of bucket in 1 min. No blow back during shut-in.
2nd Open: Strong blow. Off bottom of bucket in 1 min. No blow back during shut-in.

Recovered 600 ft. of muddy water = 8.520000 bbls. (Grind out: 40%-mud; 60%-water)
 Recovered 900 ft. of water = 12.780000 bbls. (Chlorides: 18,000 Ppm)
 Recovered 1,500 ft. of TOTAL FLUID = 21.300000 bbls.

RECEIVED

OCT 30 2006

KCC WICHITA

Remarks

Time Set Packer(s) 4:30 ~~P.M.~~ **A.M.** Time Started Off Bottom 5:40 ~~P.M.~~ **A.M.** Maximum Temperature 107°
 Initial Hydrostatic Pressure (A) 1680 P.S.I.
 Initial Flow Period Minutes 5 (B) 290 P.S.I. to (C) 383 P.S.I.
 Initial Closed In Period Minutes 15 (D) 1067 P.S.I.
 Final Flow Period Minutes 20 (E) 455 P.S.I. to (F) 712 P.S.I.
 Final Closed In Period Minutes 30 (G) 1048 P.S.I.
 Final Hydrostatic Pressure (H) 1649 P.S.I.

GENERAL INFORMATION

Client Information:

Company: GLOBE OPERATING INC

Contact: RICHARD STALCUP

Phone: Fax: e-mail:

Site Information:

Contact: JIM MUSGROVE

Phone: Fax: e-mail:

Well Information:

Name: CHRISTIANS #1

Operator: GLOBE OPERATING INC

Location-Downhole: #4 3414 TO 3490

Location-Surface: S4/17S/14W BARTON COUNTY

Test Information:

Company: DIAMOND TESTING

Representative: JOHN RIEDL

Supervisor: JIM MUSGROVE

Test Type: CONVENTIONAL

Job Number: D325

Test Unit: 2

Start Date: 2006/09/08

Start Time: 03:25:00

End Date: 2006/09/08

End Time: 08:12:00

Report Date: 2006/09/08

Prepared By: JOHN RIEDL

Remarks:

Qualified By: JIM MUSGROVE

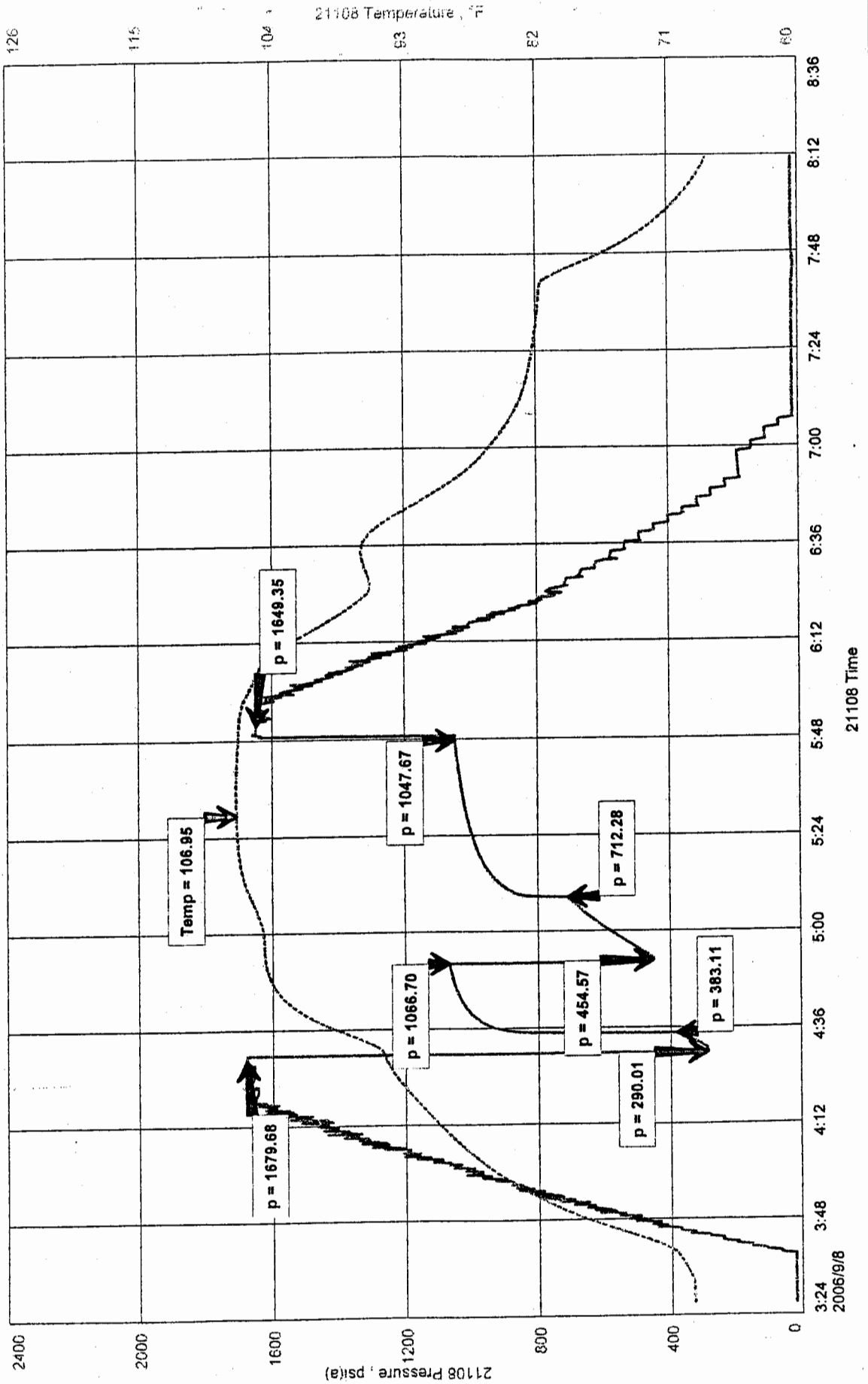
RECOVERY: 600' MUDDY WATER (40%MUD 60%WATER)
900' WATER (CHLORIDES 18,000Ppm)

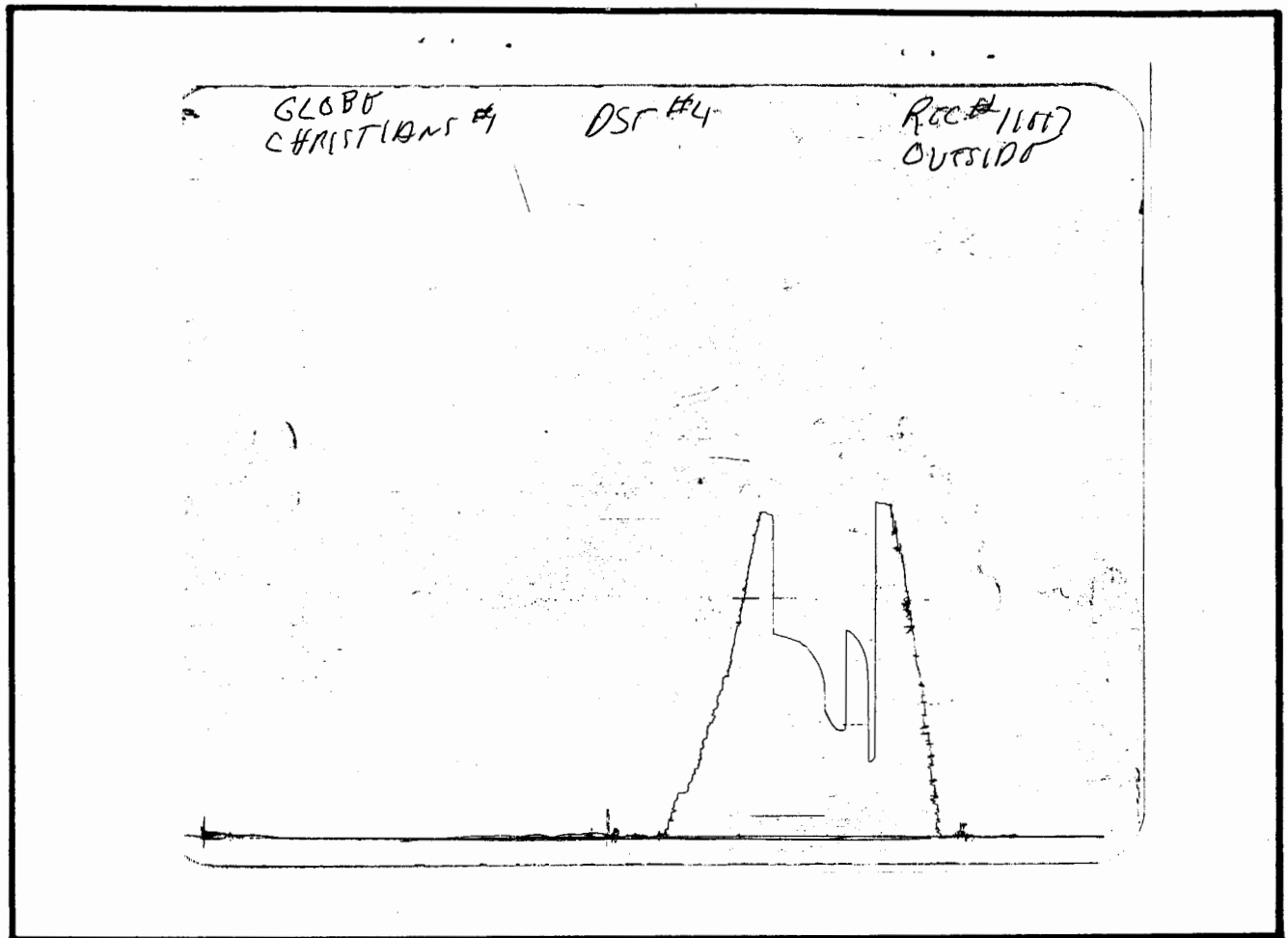
RECEIVED
OCT 30 2006
KCC WICHITA

GLOBE OPERATING INC
#4 3414 TO 3490
Start Test Date: 2006/09/08
Final Test Date: 2006/09/08

CHRISTIANS #1
Formation: ARBUCKLE
Job Number: D325

CHRISTIANS #1





This is an actual photograph of recorder chart.

POINT	PRESSURE		PSI
	Field Reading	Elec. Office Reading	
(A) Initial Hydrostatic Mud	1680	1680	PSI
(B) First Initial Flow Pressure.....	290	290	PSI
(C) First Final Flow Pressure	383	383	PSI
(D) Initial Closed-in Pressure	1067	1067	PSI
(E) Second Initial Flow Pressure.....	455	455	PSI
(F) Second Final Flow Pressure.....	712	712	PSI
(G) Final Closed-in Pressure.....	1048	1048	PSI
(H) Final Hydrostatic Mud.....	1649	1649	PSI