

15-009-25556

10-175-14w

DIAMOND TESTING
P.O. Box 157
HOISINGTON, KANSAS 67544
(620) 653-7550 • (800) 542-7313
STC 30046.D968

Page 1 of 2 Pages

Company Reif Oil & Gas CO., LLC. Lease & Well No. Linsner-Riedl Unit #1

Elevation 1962 KB Formation Lansing "A" & "B" Effective Pay -- Ft. Ticket No. J2763

Date 6-2-11 Sec. 10 Twp. 17S Range 14W County Barton State Kansas

Test Approved By Josh R. Austin Diamond Representative John C. Riedl

Formation Test No. 1 Interval Tested from 3,183 ft. to 3,225 ft. Total Depth 3,225 ft.

Packer Depth 3,178 ft. Size 6 3/4 in. Packer Depth -- ft. Size -- in.

Packer Depth 3,183 ft. Size 6 3/4 in. Packer Depth -- ft. Size -- in.

Depth of Selective Zone Set -- ft.

Top Recorder Depth (Inside) 3,186 ft. Recorder Number 30046 Cap. 6,000 psi

Bottom Recorder Depth (Outside) 3,222 ft. Recorder Number 11073 Cap. 4,000 psi

Below Straddle Recorder Depth -- ft. Recorder Number -- Cap. -- psi

Drilling Contractor Southwind Drilling, Inc. - Rig 70 Drill Collar Length -- ft. I.D. -- in.

Mud Type Chemical Viscosity 52 Weight Pipe Length -- ft. I.D. -- in.

Weight 8.8 Water Loss 9.0 cc. Drill Pipe Length 3,163 ft. I.D. 3 1/2 in.

Chlorides 6,000 P.P.M. Test Tool Length 20 ft. Tool Size 3 1/2 - IF in.

Jars: Make Sterling Serial Number Not Run Anchor Length 42 ft. Size 4 1/2 - FH in.

Did Well Flow? No Reversed Out No Surface Choke Size 1 in. Bottom Choke Size 5/8 in.

Main Hole Size 7 7/8 in. Tool Joint Size 4 1/2 - XH in.

Blow: 1st Open: Strong blow. Off bottom of bucket in 2 mins. Good, 6 in., blow back during shut-in.

2nd Open: Strong blow. Off bottom of bucket in 4 mins. Strong, 12 in., blow back during shut-in.

Recovered 1,000 ft. of gas in pipe

Recovered 400 ft. of slightly mud cut gassy oil = 5.692000 bbls. (Grind out: 5%-mud; 30%-gas; 65%-oil)

Recovered 90 ft. of slightly oil cut water = 1.280700 bbls. (Grind out: 5%-oil; 95%-water) Gravity: 40 @ 60°

Recovered 490 ft. of TOTAL FLUID = 6.972700 bbls. Chlorides: 55,000 Ppm

Recovered -- ft. of --

Remarks --

Time Set Packer(s) 4:15 ~~P.M.~~ A.M. Time Started Off Bottom 7:15 ~~P.M.~~ A.M. Maximum Temperature 105°

Initial Hydrostatic Pressure (A) 1529 P.S.I.

Initial Flow Period Minutes 30 (B) 73 P.S.I. to (C) 129 P.S.I.

Initial Closed In Period Minutes 45 (D) 574 P.S.I.

Final Flow Period Minutes 45 (E) 130 P.S.I. to (F) 203 P.S.I.

Final Closed In Period Minutes 60 (G) 570 P.S.I.

Final Hydrostatic Pressure (H) 1505 P.S.I.

GENERAL INFORMATION

Client Information:

Company: REIF OIL+GAS CO LTD

Contact: DON REIF

Phone: Fax: e-mail:

Site Information:

Contact: JOAH AUSTIN

Phone: Fax: e-mail:

Well Information:

Name: LINSNER/RIEDL UNIT 1

Operator: REIF OIL+GAS CO LLC

Location-Downhole:

Location-Surface: S10/17S/14W

Test Information:

Company: DIAMOND TESTING

Representative: JOHN RIEDL

Supervisor: JOSH AUSTIN

Test Type: CONVENTIONAL Job Number: D968

Test Unit:

Start Date: 2011/06/02 Start Time: 02:30:00

End Date: 2011/06/02 End Time: 09:30:00

Report Date: 2011/06/02 Prepared By: JOHN RIEDL

Qualified By: JOSH AUSTIN

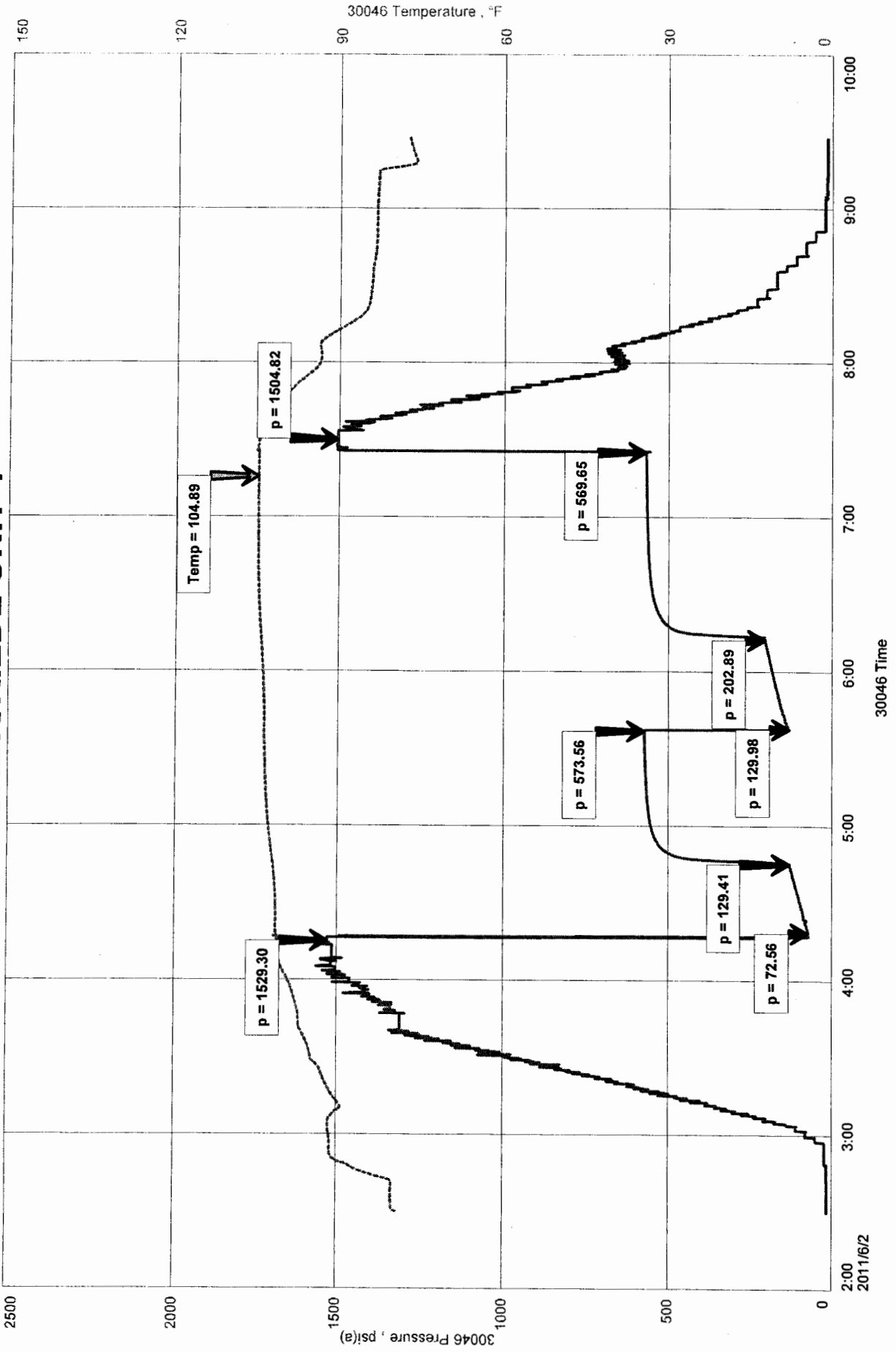
Remarks:

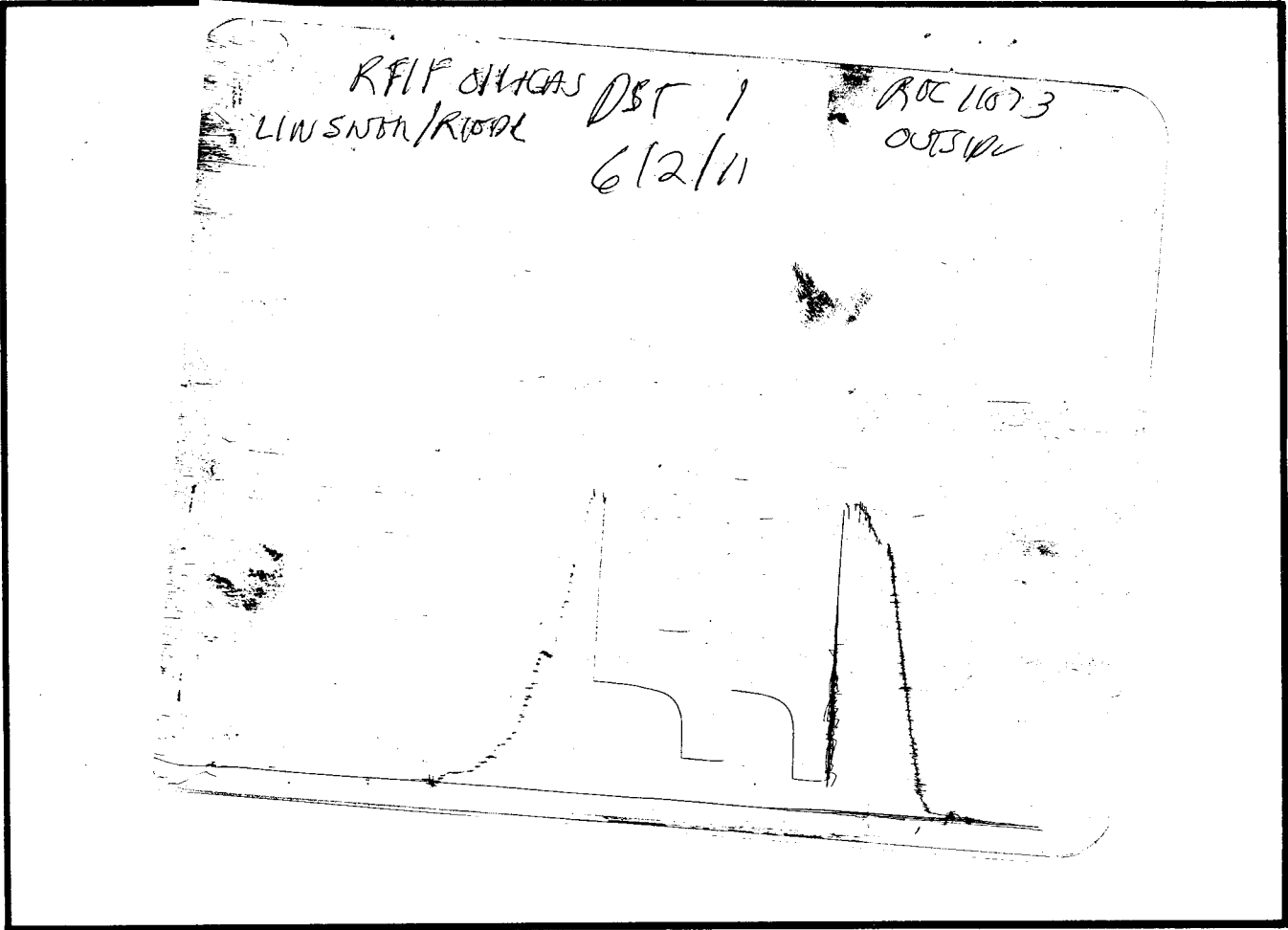
RECOVERY: 1000" GAS IN PIPE, 400' SLIGHTLY MUD CUT GASSY OIL, 90, SLIGHTLY OIL CUT WATER

REIF OIL+GAS CO LTD
Start Test Date: 2011/06/02
Final Test Date: 2011/06/02

LINSNER/RIEDL UNIT 1
Formation: LANSING A+B
Job Number: D968

LINSNER/RIEDL UNIT 1





This is an actual photograph of recorder chart.

POINT	PRESSURE		PSI
	Field Reading	Elec. Office Reading	
(A) Initial Hydrostatic Mud	1529	1529	PSI
(B) First Initial Flow Pressure.....	73	73	PSI
(C) First Final Flow Pressure	129	129	PSI
(D) Initial Closed-in Pressure	574	574	PSI
(E) Second Initial Flow Pressure.....	130	130	PSI
(F) Second Final Flow Pressure.....	203	203	PSI
(G) Final Closed-in Pressure.....	570	570	PSI
(H) Final Hydrostatic Mud.....	1505	1505	PSI



DIAMOND TESTING

P.O. Box 157
HOISINGTON, KANSAS 67544
(620) 653-7550 • (800) 542-7313
STC 30046.D969

Company Reif Oil & Gas CO., LLC. Lease & Well No. Linsner-Riedl Unit #1

Elevation 1962 KB Formation Lansing "G" Effective Pay -- Ft. Ticket No. J2764

Date 6-2-11 Sec. 10 Twp. 17S Range 14W County Barton State Kansas

Test Approved By Josh R. Austin Diamond Representative John C. Riedl

Formation Test No. 2 Interval Tested from 3,272 ft. to 3,285 ft. Total Depth 3,285 ft.

Packer Depth 3,267 ft. Size 6 3/4 in. Packer Depth -- ft. Size -- in.

Packer Depth 3,272 ft. Size 6 3/4 in. Packer Depth -- ft. Size -- in.

Depth of Selective Zone Set ft.

Top Recorder Depth (Inside) 3,275 ft. Recorder Number 30046 Cap. 6,000 psi

Bottom Recorder Depth (Outside) 3,282 ft. Recorder Number 11073 Cap. 4,000 psi

Below Straddle Recorder Depth ft. Recorder Number Cap. psi

Drilling Contractor Southwind Drilling, Inc. - Rig 70 Drill Collar Length -- ft. I.D. -- in.

Mud Type Chemical Viscosity 49 Weight Pipe Length -- ft. I.D. -- in.

Weight 9.0 Water Loss 8.0 cc. Drill Pipe Length 3,252 ft. I.D. 3 1/2 in.

Chlorides 2,500 P.P.M. Test Tool Length 20 ft. Tool Size 3 1/2 - IF in.

Jars: Make Sterling Serial Number Not Run Anchor Length 13 ft. Size 4 1/2 - FH in.

Did Well Flow? No Reversed Out No Surface Choke Size 1 in. Bottom Choke Size 5/8 in.

Main Hole Size 7 7/8 in. Tool Joint Size 4 1/2 - XH in.

Blow: 1st Open: Weak blow. Dead in 20 mins. No blow back during shut-in.

2nd Open: No blow. No blow back during shut-in.

Recovered 30 ft. of muddy water with a scum of oil = .426900 bbls. (Grind out: 40%-mud; 60%-water)

Recovered ft. of Chlorides: 60,000 Ppm

Recovered ft. of

Recovered ft. of

Recovered ft. of

Remarks

Time Set Packer(s) 9:10 ^{XXM.} P.M. Time Started Off Bottom 11:25 ^{XXM.} P.M. Maximum Temperature 105°

Initial Hydrostatic Pressure (A) 1585 P.S.I.

Initial Flow Period Minutes 30 (B) 28 P.S.I. to (C) 34 P.S.I.

Initial Closed In Period Minutes 30 (D) 637 P.S.I.

Final Flow Period Minutes 30 (E) 36 P.S.I. to (F) 40 P.S.I.

Final Closed In Period Minutes 45 (G) 640 P.S.I.

Final Hydrostatic Pressure (H) 1560 P.S.I.

GENERAL INFORMATION

Client Information:

Company: REIF OIL+GAS CO LLC

Contact: DON REIF

Phone: Fax: e-mail:

Site Information:

Contact: JOSH AUSTIN

Phone: Fax: e-mail:

Well Information:

Name: LINSNER/RIEDL UNIT 1

Operator: REIF OIL+GAS CO. LLC.

Location-Downhole:

Location-Surface: S10/17S/14W

Test Information:

Company: DIAMOND TESTING

Representative: JOHN RIEDL

Supervisor: JOSH AUSTIN

Test Type: CONVENTIONAL

Job Number: D969

Test Unit:

Start Date: 2011/06/02

Start Time: 19:00:00

End Date: 2011/06/03

End Time: 01:20:00

Report Date: 2011/06/03

Prepared By: JOHN RIEDL

Remarks:

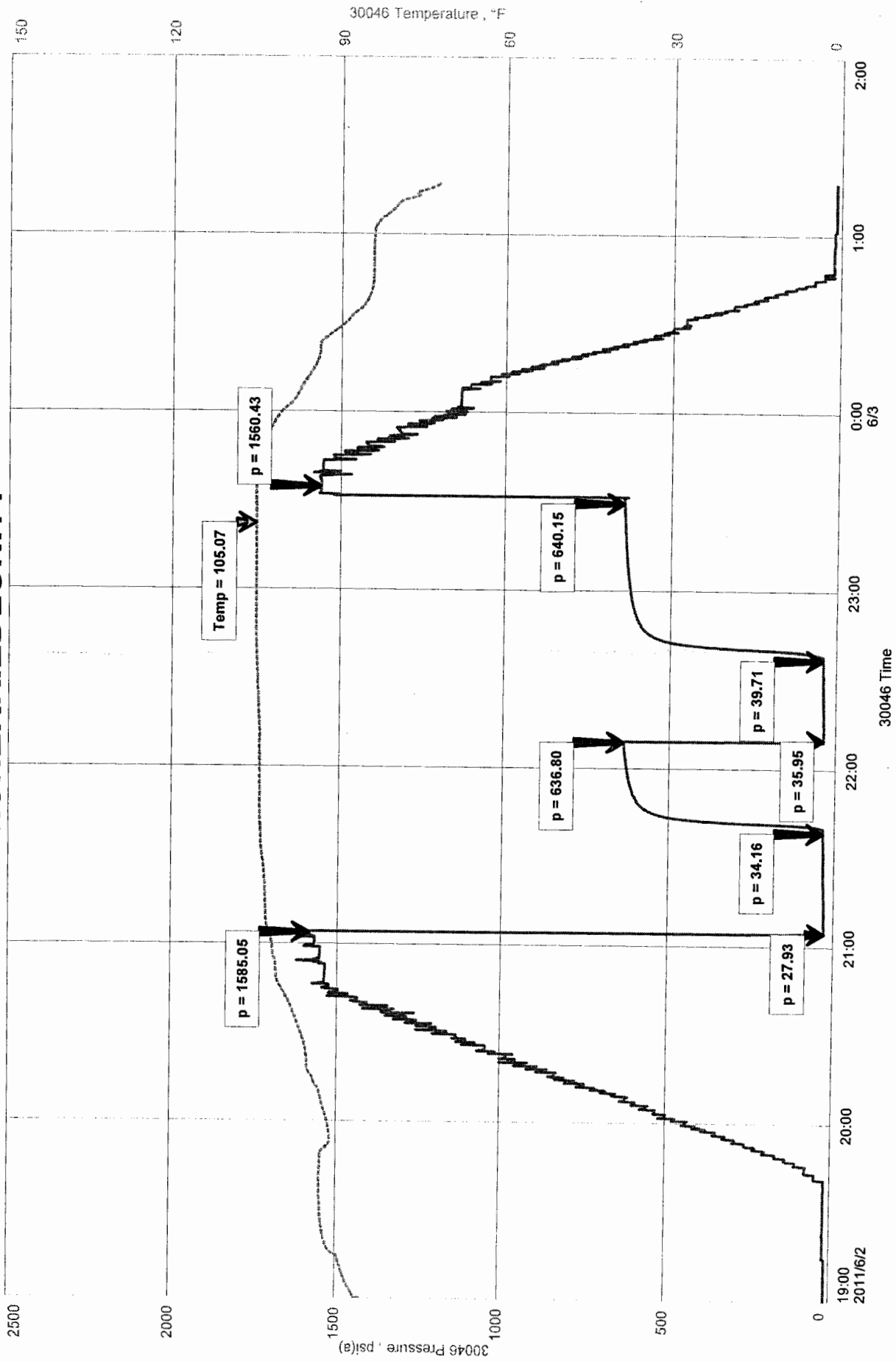
Qualified By: JOSH AUSTIN

RECOVER: 30' MUDDY WATER

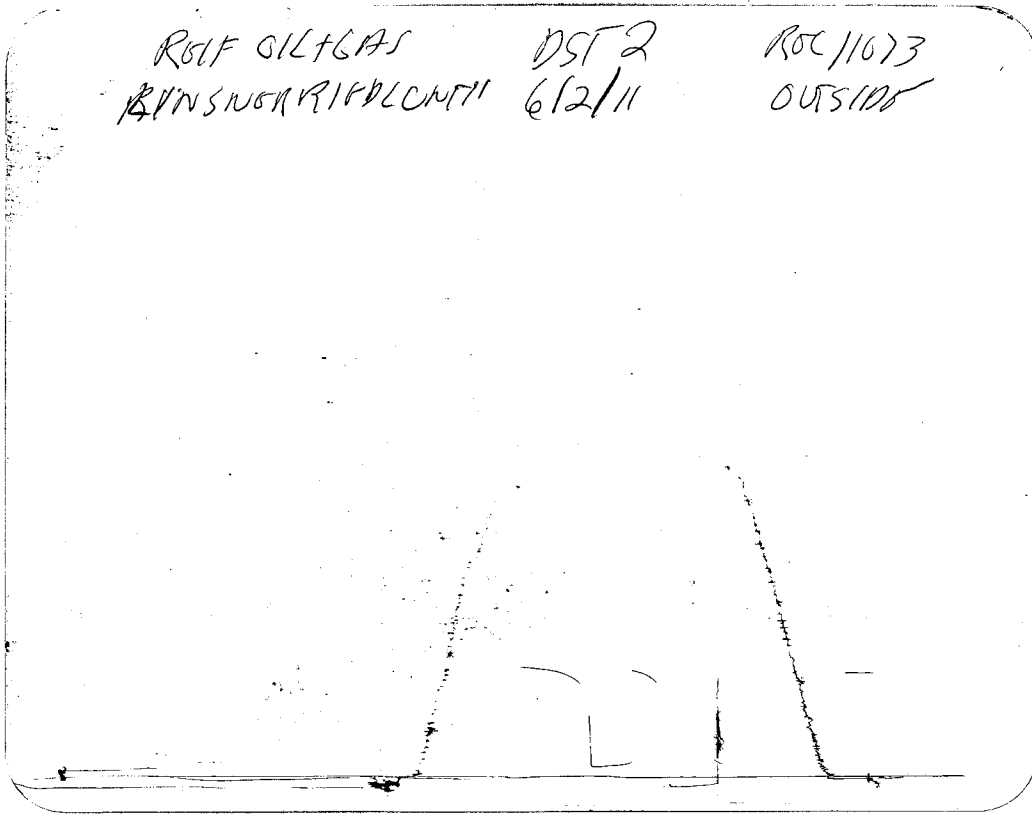
REIF OIL+GAS CO LLC
Start Test Date: 2011/06/02
Final Test Date: 2011/06/03

LINSNER/RIEDL UNIT 1
Formation: LANSING "G"
Job Number: D969

LINSNERRIEDLUNIT1



RSLF GILGAS DST 2 ROC 11673
 BINSINGRIPDLONTI 6/2/11 OUTSIDE



This is an actual photograph of recorder chart.

POINT	PRESSURE		Elec. Office Reading	PSI
	Field Reading			
(A) Initial Hydrostatic Mud	1585	1585		PSI
(B) First Initial Flow Pressure.....	28	28		PSI
(C) First Final Flow Pressure	34	34		PSI
(D) Initial Closed-in Pressure	637	637		PSI
(E) Second Initial Flow Pressure.....	36	36		PSI
(F) Second Final Flow Pressure.....	40	40		PSI
(G) Final Closed-in Pressure.....	640	640		PSI
(H) Final Hydrostatic Mud.....	1560	1560		PSI



15-009-25556

10-17s-14w

DIAMOND TESTING

P.O. Box 157
HOISINGTON, KANSAS 67544
(620) 653-7550 • (800) 542-7313
STC 30046.D970

Company Reif Oil & Gas CO., LLC. Lease & Well No. Linsner-Riedl Unit #1
Elevation 1962 KB Formation Lansing 'H'-'J' Effective Pay -- Ft. Ticket No. J2765
Date 6-3-11 Sec. 10 Twp. 17S Range 14W County Barton State Kansas
Test Approved By Josh R. Austin Diamond Representative John C. Riedl
Formation Test No. 3 Interval Tested from 3,316 ft. to 3,380 ft. Total Depth 3,380 ft.
Packer Depth 3,311 ft. Size 6 3/4 in. Packer Depth -- ft. Size -- in.
Packer Depth 3,316 ft. Size 6 3/4 in. Packer Depth -- ft. Size -- in.
Depth of Selective Zone Set -- ft.

Top Recorder Depth (Inside) 3,319 ft. Recorder Number 30046 Cap. 6,000 psi
Bottom Recorder Depth (Outside) 3,377 ft. Recorder Number 11073 Cap. 4,000 psi
Below Straddle Recorder Depth -- ft. Recorder Number -- Cap. -- psi

Drilling Contractor Southwind Drilling, Inc. - Rig 70 Drill Collar Length -- ft. I.D. -- in.
Mud Type Chemical Viscosity 49 Weight Pipe Length -- ft. I.D. -- in.
Weight 9.0 Water Loss 8.0 cc. Drill Pipe Length 3,296 ft. I.D. 3 1/2 in.
Chlorides 2,500 P.P.M. Test Tool Length 20 ft. Tool Size 3 1/2 - IF in.
Jars: Make Sterling Serial Number Not Run Anchor Length 64 ft. Size 4 1/2 - FH in.
Did Well Flow? No Reversed Out No Surface Choke Size 1 in. Bottom Choke Size 5/8 in.
Main Hole Size 7 7/8 in. Tool Joint Size 4 1/2 - XH in.

Blow: 1st Open: Weak blow. Dead in 3 mins. Flushed tool but no help. No blow back during shut-in.
2nd Open: N/A

Recovered 400 ft. of drilling mud = 5.692000 bbls.
Recovered -- ft. of
Recovered -- ft. of
Recovered -- ft. of
Recovered -- ft. of

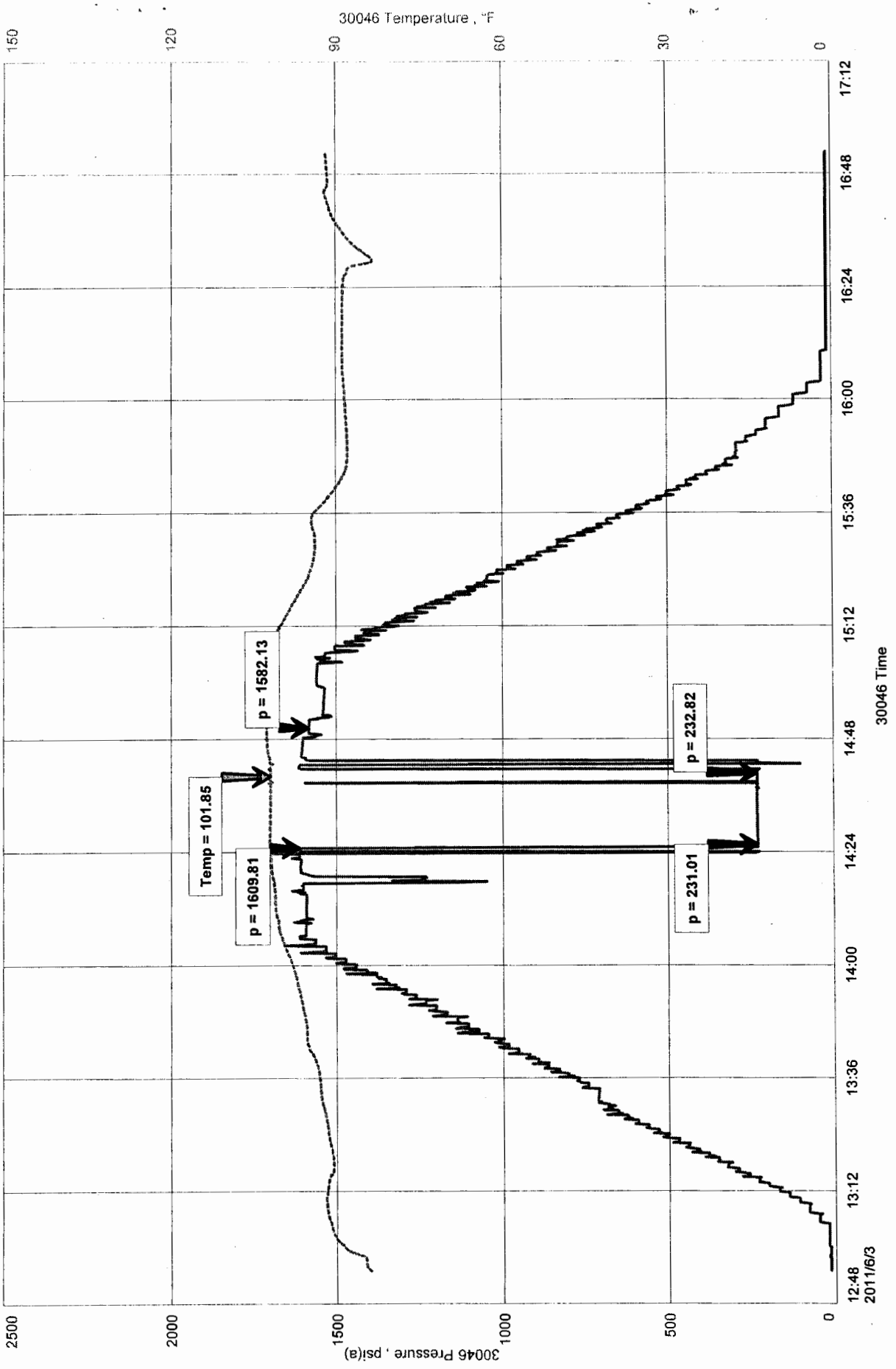
Remarks Slid tool 40 ft. during initial opening. Received drilling mud into drill string
during this time period. Tool did not plug. Clean flow.

Time Set Packer(s) 2:30 P.M. Time Started Off Bottom 3:00 P.M. Maximum Temperature 102°
Initial Hydrostatic Pressure (A) 1610 P.S.I.
Initial Flow Period Minutes 30 (B) 231 P.S.I. to (C) 233 P.S.I.
Initial Closed In Period Minutes 0 (D) -- P.S.I.
Final Flow Period Minutes 0 (E) -- P.S.I. to (F) -- P.S.I.
Final Closed In Period Minutes 0 (G) -- P.S.I.
Final Hydrostatic Pressure (H) 1582 P.S.I.

LINSNER/RIEDL UNIT 1
Formation: LANSING "H-J"
Job Number: D970

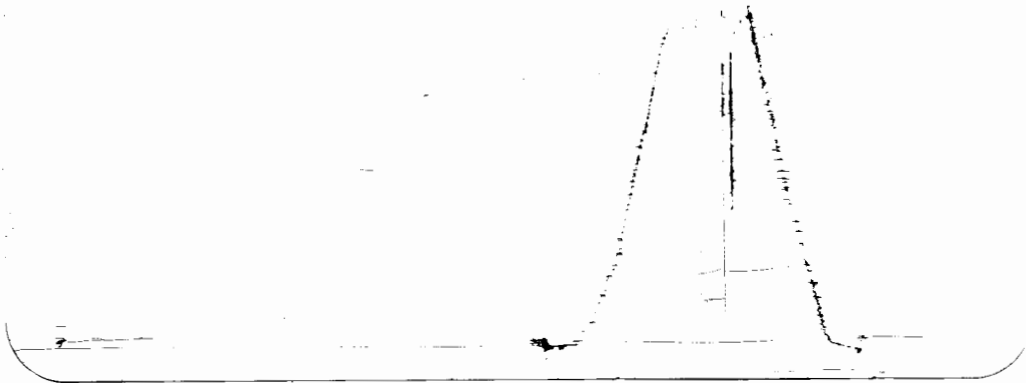
REIF OIL+GAS CO LLC
Start Test Date: 2011/06/03
Final Test Date: 2011/06/03

LINSNER/RIEDL UNIT 1



RIF OIL GAS DST 3
 LINSNON PROD UNIT 6/3/11

REC 11073.
 OUTSIDE



This is an actual photograph of recorder chart.

POINT	PRESSURE		Elec. Office Reading	PSI
	Field Reading			
(A) Initial Hydrostatic Mud	1610	1610		PSI
(B) First Initial Flow Pressure	231	231		PSI
(C) First Final Flow Pressure	233	233		PSI
(D) Initial Closed-in Pressure	--	--		PSI
(E) Second Initial Flow Pressure	--	--		PSI
(F) Second Final Flow Pressure	--	--		PSI
(G) Final Closed-in Pressure	--	--		PSI
(H) Final Hydrostatic Mud	1582	1582		PSI