

Sun Oil Well Cementing, Inc.

DRILL STEM TEST DATA

P.O. Box 169

Great Bend, Kansas 67530

Lease Putnam	Well No. 3	Date 3-20-78
County Barton Sec. 1 Twp. 17 Rng. 14		Elevation
Company L. G. Stephenson		Test No. 1
Contractor Red Tiger Drlg.		Zone Tested K.C.
Charge To L. G. Stephenson		Ticket # 2728
Approved By James W. Spellman		Tester Roy Bowman

Initial Hydro Mud Press. 1760 P.S.I.

Initial Flow Press. 71 To 61 P.S.I. Initial Flow Period 60 Min.

Initial Shut-in Press. 459 P.S.I. Initial Shut-in 45 Min.

Final Flow Press. 61 To 51 P.S.I. Final Flow Period 30 Min.

Final Shut-in Press. 204 P.S.I. Final Shut-in 45 Min.

Final Hydro Mud Press. 1731 P.S.I. TIME TOOL OPEN 10:15 A.M.

Temperature 98

Mud Weight 9.9 Viscosity 42

Fluid Loss 12.0

Interval Tested 3215 To 3229

Top Packer Depth 3210 Surface Choke Size

Bottom Packer Depth 3215 Bottom Choke Size 5/8

Total Depth 3229 Main Hole Size 7 7/8

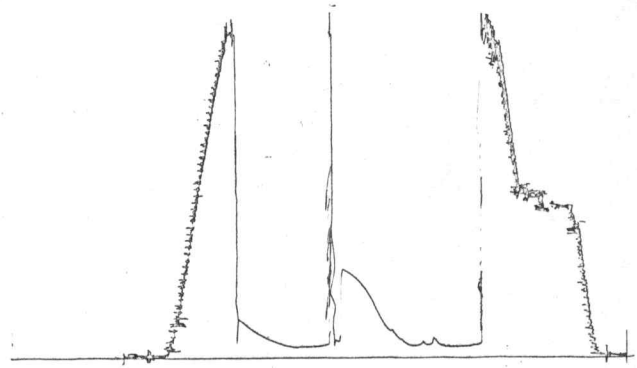
Drill Pipe Size Wt Rubber Size 6 3/4

Drill Collar I.D. Ft. Run

Blow Fair, thru-out I.F.P. F.F.P. blow dead in 1 min. flushed tool ~~was~~ blew for 3 min.

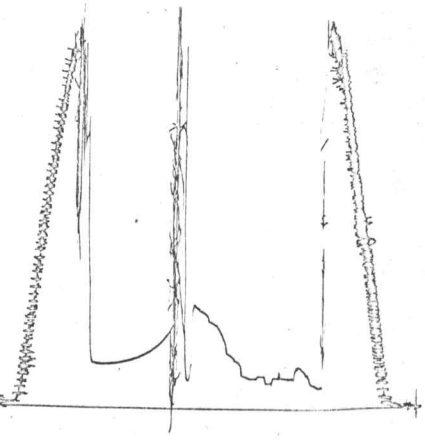
Recovery 60' watery mud Slid 5' to T.D.

T. 6170  
7-2728



BOTTOM

B-2728



Sun Oil Well Cementing, Inc.

DRILL STEM TEST DATA

P.O. Box 169

Great Bend, Kansas 67530

Lease	Putnam	Well No.	3	Date	3-21-78
County	Barton	Sec.	1	Twp.	17
		Rng.	14	Elevation	
Company	L. G. Stephenson			Test No.	2
Contractor	Red Tiger Drlg.			Zone Tested	K.C.
Charge To	L. G. Stephenson			Ticket #	2729
Approved By	James W. Spellman			Tester	Rou Bowman

Initial Hydro Mud Press. 1772 P.S.I.

Initial Flow Press. 40 To 24 P.S.I. Initial Flow Period 30 Min.

Initial Shut-in Press. 51 P.S.I. Initial Shut-in 30 Min.

Final Flow Press. 30 To 20 P.S.I. Final Flow Period 30 Min.

Final Shut-in Press. 40 P.S.I. Final Shut-in 30 Min.

Final Hydro Mud Press. 1731 P.S.I. TIME TOOL OPEN 9:40 P.M.

Temperature 112

Mud Weight 9.9 Viscosity 46

Fluid Loss 12.6

Interval Tested 3228 To 3252

Top Packer Depth 3223 Surface Choke Size \_\_\_\_\_

Bottom Packer Depth 3228 Bottom Choke Size 5/8

Total Depth 3252 Main Hole Size 7 7/8

Drill Pipe Size \_\_\_\_\_ Wt \_\_\_\_\_ Rubber Size 6 3/4

Drill Collar I.D. \_\_\_\_\_ Ft. Run \_\_\_\_\_

Blow Very weak, dead 15 min. into I.F.P. Flushed too F.F.P. no blow

Recovery 10' watery mud (20% water)

\_\_\_\_\_

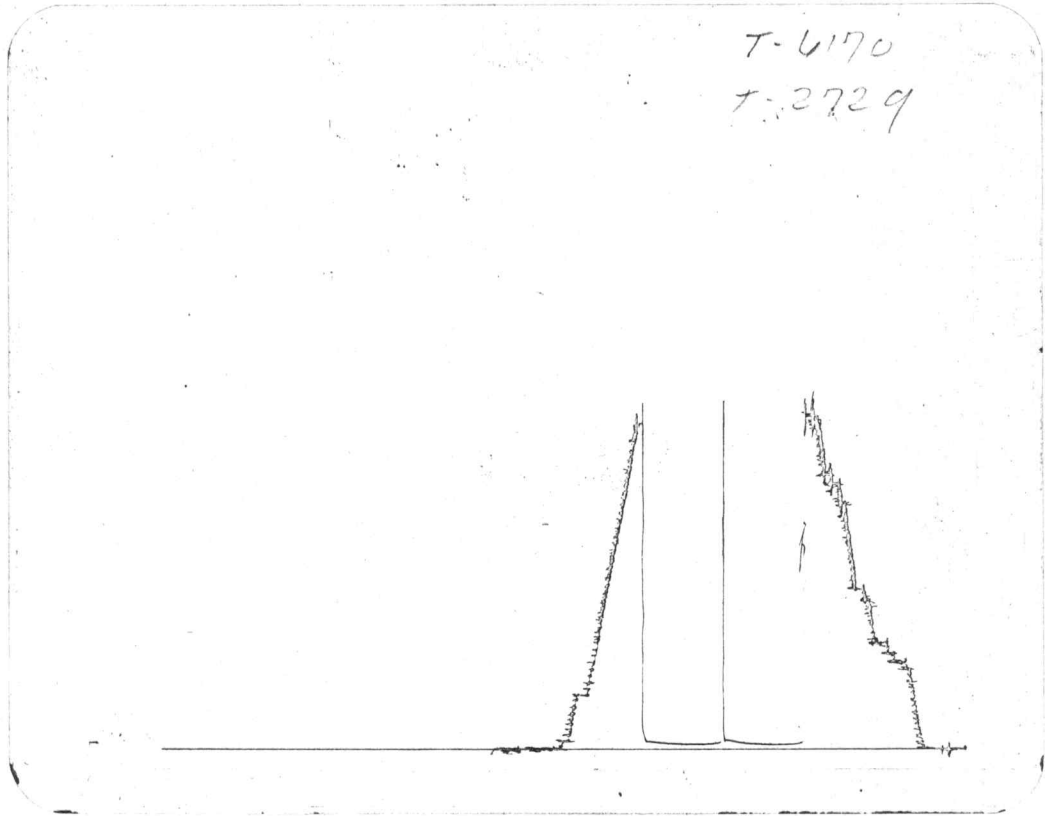
\_\_\_\_\_

\_\_\_\_\_

\_\_\_\_\_

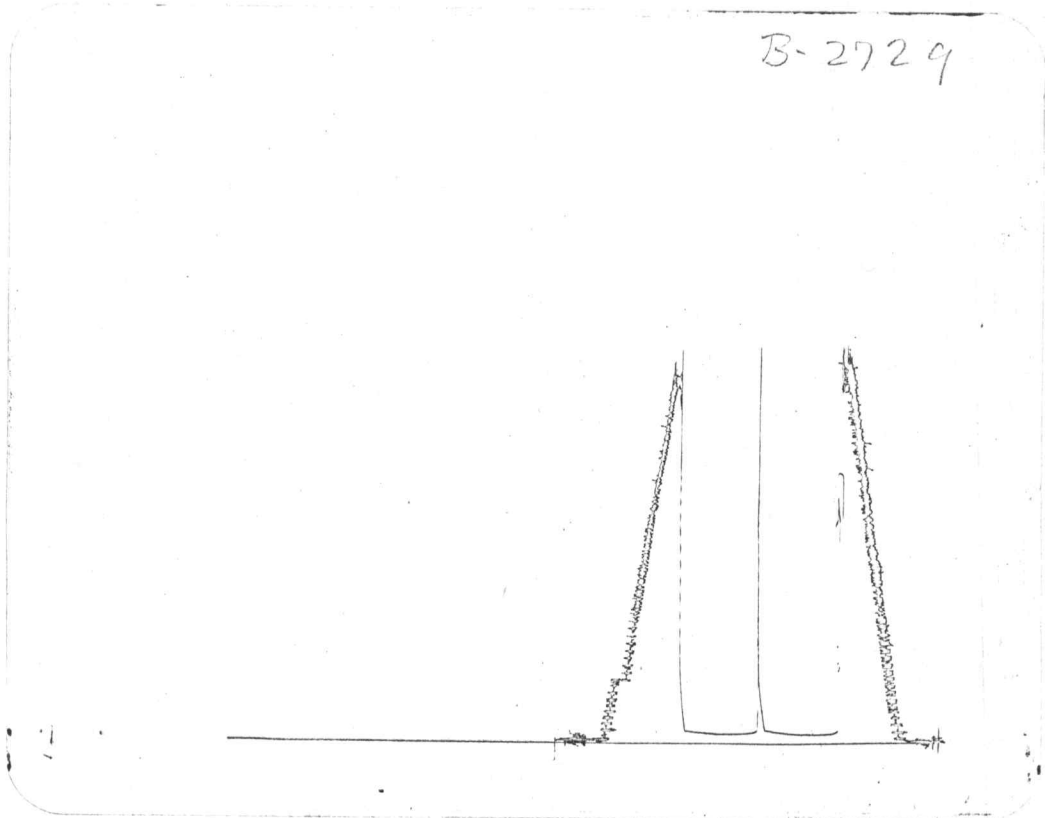
T-6170

T-2729



BOTTOM

B-2729



# Sun Oil Well Cementing, Inc.

# DRILL STEM TEST DATA

P.O. Box 169

Great Bend, Kansas 67530

Lease	Putnam	Well No.	3	Date	3-21-78
County	Barton	Sec.	1	Twp.	17
		Rng.	14	Elevation	
Company	L. G. Stephenson			Test No.	3
Contractor	Red Tiger Drlg.			Zone Tested	K.C.
Charge To	L. G. Stephenson			Ticket #	2730
Approved By	James W. Spellman			Tester	Roy Bowman

Initial Hydro Mud Press. 1823 P.S.I.

Initial Flow Press. 81 To 71 P.S.I. Initial Flow Period 30 Min.

Initial Shut-in Press. 346 P.S.I. Initial Shut-in 30 Min.

Final Flow Press. 71 To 61 P.S.I. Final Flow Period 30 Min.

Final Shut-in Press. 204 P.S.I. Final Shut-in 30 Min.

Final Hydro Mud Press. 1782 P.S.I. TIME TOOL OPEN 11:00 A.M.

Temperature 113

Mud Weight 9.8 Viscosity 40

Fluid Loss 12.6

Interval Tested 3262 To 3292

Top Packer Depth 3257 Surface Choke Size

Bottom Packer Depth 3262 Bottom Choke Size 5/8

Total Depth 3292 Main Hole Size 7 7/8

Drill Pipe Size Wt Rubber Size 6 3/4

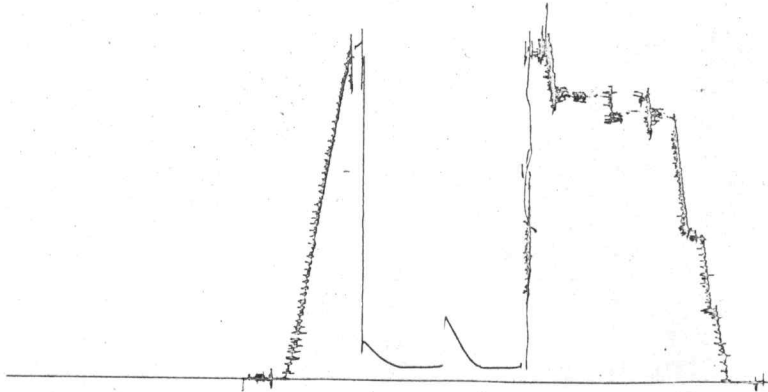
Drill Collar I.D. Ft. Run

Blow Weak, dead 8 min. into I.F.P.

Recovery 70' water cut mud. Slid 4' to T.D.

T-6170

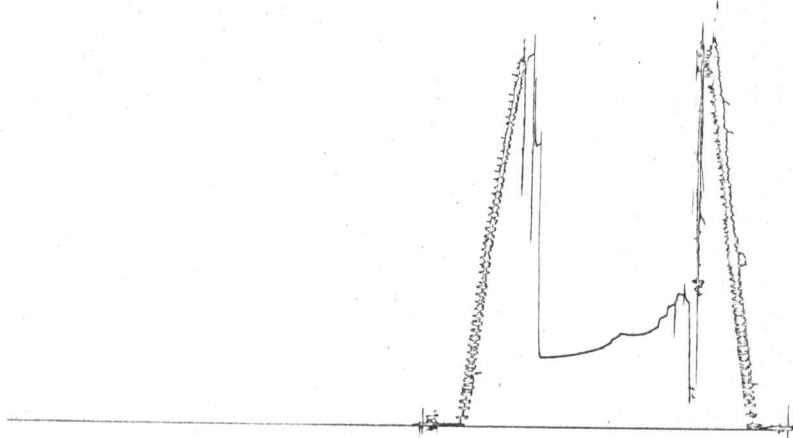
T-2730



BOTTOM

B-273

Plugged off



# Sun Oil Well Cementing, Inc.

# DRILL STEM TEST DATA

P.O. Box 169

Great Bend, Kansas 67530

Lease	Putnam	Well No.	3	Date	3-22-78
County	Barton	Sec.	1	Twp.	17
		Rng.	14	Elevation	
Company	L. G. Stephenson			Test No.	4
Contractor	Red Tiger Drlg.			Zone Tested	K.C.
Charge To	L. G. Stephenson			Ticket #	2731
Approved By	James W. Spellman			Tester	Roy Bowman

Initial Hydro Mud Press. 1924 P.S.I.

Initial Flow Press. 73 To 79 P.S.I. Initial Flow Period 60 Min.

Initial Shut-in Press. 7 700 P.S.I. Initial Shut-in 45 Min.

Final Flow Press. 84 To 89 P.S.I. Final Flow Period 60 Min.

Final Shut-in Press. 745 P.S.I. Final Shut-in 45 Min.

Final Hydro Mud Press. 1914 P.S.I. TIME TOOL OPEN 10:50 A.M.

Temperature 122

Mud Weight 9.8 Viscosity 43

Fluid Loss 12.0

Interval Tested 3313 To 3410

Top Packer Depth 3308 Surface Choke Size \_\_\_\_\_

Bottom Packer Depth 3313 Bottom Choke Size 5/8

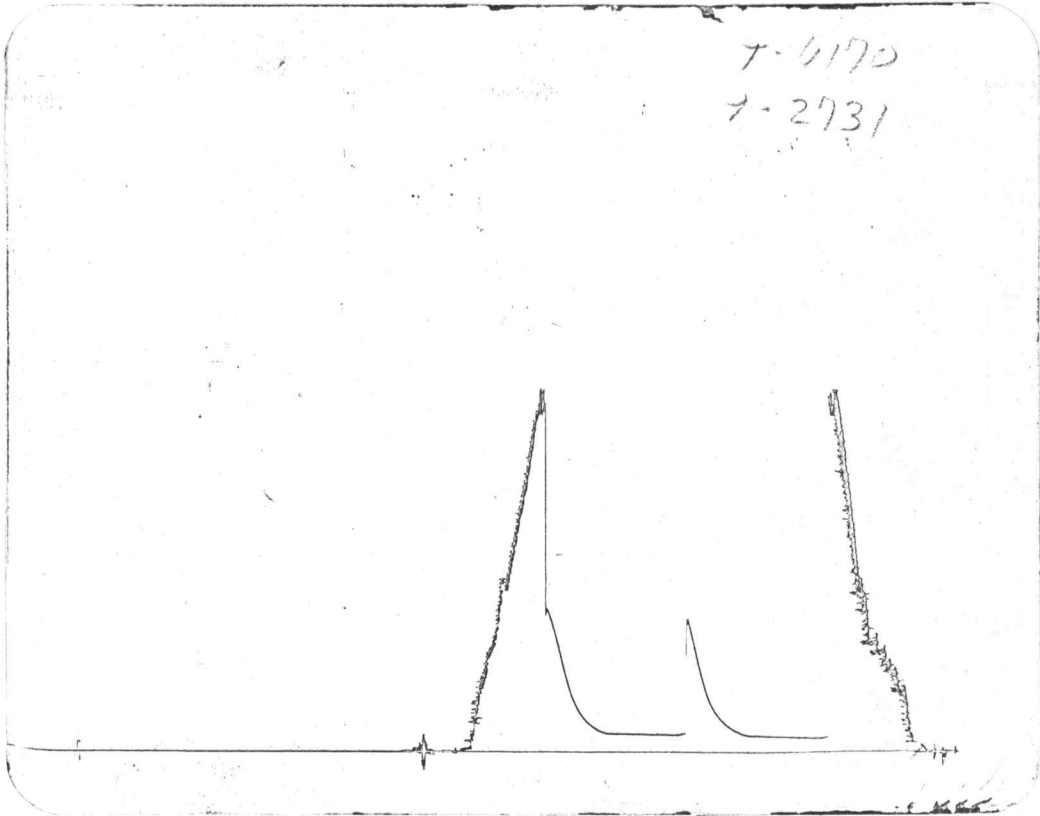
Total Depth 3410 Main Hole Size 7 7/8

Drill Pipe Size \_\_\_\_\_ Wt \_\_\_\_\_ Rubber Size 6 3/4

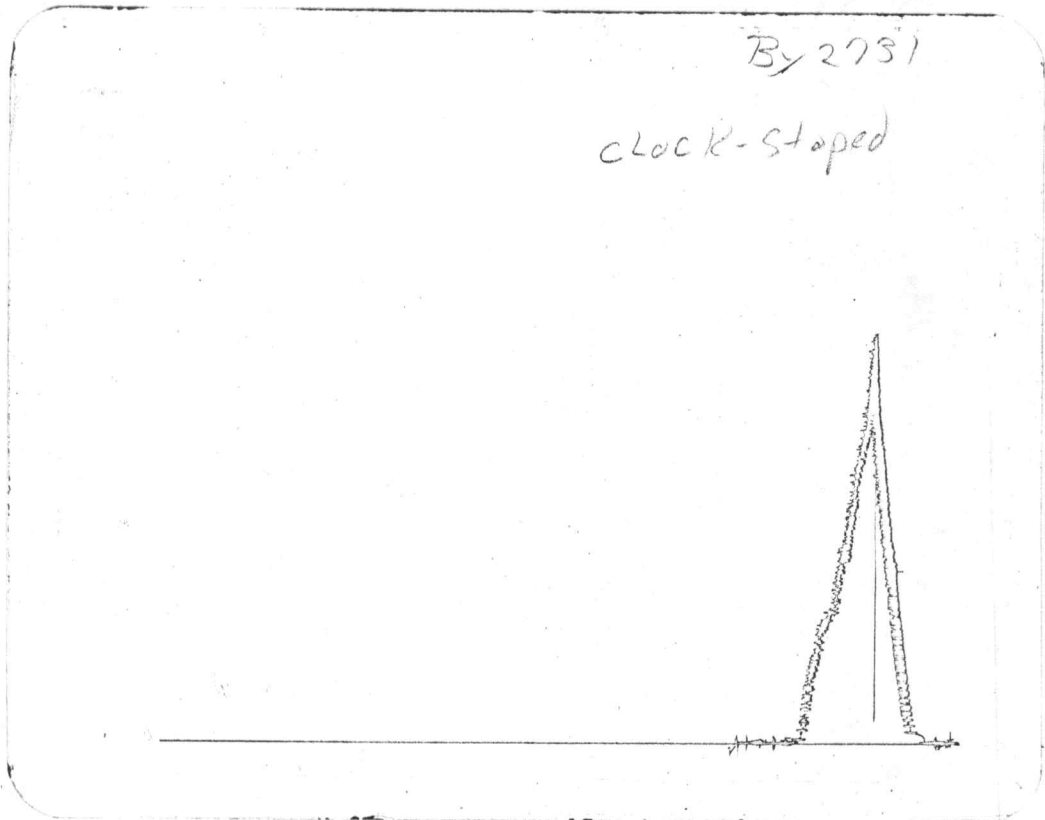
Drill Collar I.D. \_\_\_\_\_ Ft. Run \_\_\_\_\_

Blow Weak, building to strong 42 min. into I.F.P. Strong thru-out F.F.P.

Recovery 345' Gas 75' oil cut gassy mud. (25% oil - 2% water-43% mud  
40% Gas)



BOTTOM



# Sun Oil Well Cementing, Inc.

# DRILL STEM TEST DATA

P.O. Box 169

Great Bend, Kansas 67530

Lease	Putnam	Well No.	3	Date	3-23-78	
County	Barton	Sec.	1	Twp.	17	
		Rng.	14	Elevation		
Company	L. G. Stephenson				Test No.	5
Contractor	Red Tiger DRlg.				Zone Tested	Arb.
Charge To	L. G. Stephenson				Ticket #	2732
Approved By	James W. Spellman				Tester	Roy Bowman

Initial Hydro Mud Press. 1945 P.S.I.

Initial Flow Press. 122 To 304 P.S.I. Initial Flow Period 60 Min.

Initial Shut-in Press. 1083 P.S.I. Initial Shut-in 45 Min.

Final Flow Press. 304 To 418 P.S.I. Final Flow Period 60 Min.

Final Shut-in Press. 1071 P.S.I. Final Shut-in 45 Min.

Final Hydro Mud Press. 1930 P.S.I. TIME TOOL OPEN 5:00 A.M.

Temperature 122

Mud Weight 9.8 Viscosity 43

Fluid Loss 12.0

Interval Tested 3397 To 3457

Top Packer Depth 3392 Surface Choke Size

Bottom Packer Depth 3397 Bottom Choke Size 5/8

Total Depth 3457 Main Hole Size 7 7/8

Drill Pipe Size Wt Rubber Size 6 3/4

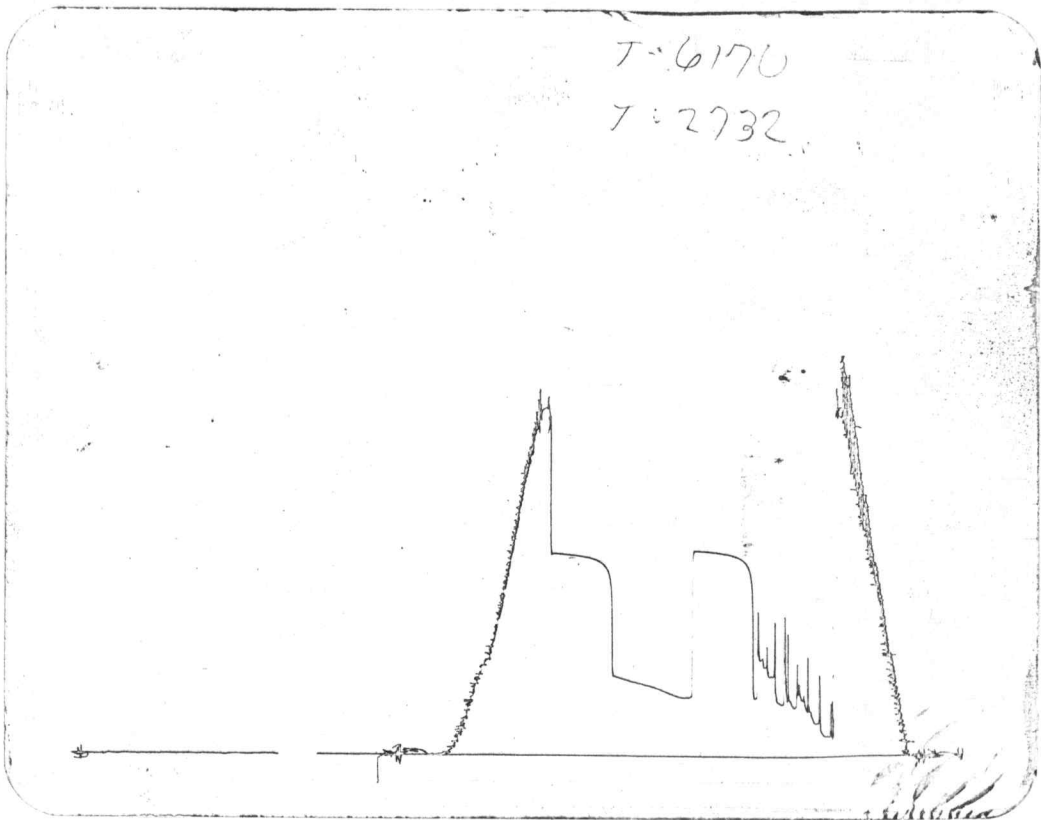
Drill Collar I.D. Ft. Run

Blow Fair, Building to strong 11 min. into I.F.P. Strong thru out F.F.P.

Recovery 600' oil cut gassy mud  
 240' heavy oil cut gassy mud  
 840' Total Fluid

T-6170

T-2732



BOTTOM

B-2732

