

15-009-25557

3-17s-15w

DIAMOND TESTING

P.O. Box 157

HOISINGTON, KANSAS 67544

(620) 653-7550 • (800) 542-7313

STC 30046.D960

Company Reif Oil & Gas Co. LLC Lease & Well No. D. Steinert No. 2
 Elevation 1972 KB Formation Topeka Effective Pay -- Ft. Ticket No. J2755
 Date 5-20-11 Sec. 3 Twp. 17S Range 15W County Barton State Kansas
 Test Approved By Josh R. Austin Diamond Representative John C. Riedl

Formation Test No. 1 Interval Tested from 3,125 ft. to 3,160 ft. Total Depth 3,160 ft.
 Packer Depth 3,120 ft. Size 6 3/4 in. Packer Depth -- ft. Size -- in.
 Packer Depth 3,125 ft. Size 6 3/4 in. Packer Depth -- ft. Size -- in.
 Depth of Selective Zone Set ft.

Top Recorder Depth (Inside) 3,128 ft. Recorder Number 30046 Cap. 6,000 psi
 Bottom Recorder Depth (Outside) 3,157 ft. Recorder Number 11073 Cap. 4,000 psi
 Below Straddle Recorder Depth ft. Recorder Number Cap. psi

Drilling Contractor Southwind Drilling, Inc. - Rig 70 Drill Collar Length 120 ft. I.D. 2 1/4 in.
 Mud Type Chemical Viscosity 54 Weight Pipe Length -- ft. I.D. -- in.
 Weight 9.0 Water Loss 10.4 cc. Drill Pipe Length 2,985 ft. I.D. 3 1/2 in.
 Chlorides 10,400 P.P.M. Test Tool Length 20 ft. Tool Size 3 1/2 - IF in.
 Jars: Make Sterling Serial Number Not Run Anchor Length 35 ft. Size 4 1/2 - FH in.
 Did Well Flow? No Reversed Out No Surface Choke Size 1 in. Bottom Choke Size 5/8 in.
 Main Hole Size 7 7/8 in. Tool Joint Size 4 1/2 - XH in.

Blow: 1st Open: Weak blow. Dead in 18 mins. No blow back during shut-in.
2nd Open: No blow. No blow back during shut-in.

Recovered 70 ft. of drilling mud with a show of oil in top of tool = .344400 bbls.
 Recovered ft. of
 Recovered ft. of
 Recovered ft. of
 Recovered ft. of
 Remarks

Time Set Packer(s) 8:45 ~~XXX~~ P.M. Time Started Off Bottom 10:45 ~~XXX~~ P.M. Maximum Temperature 97°
 Initial Hydrostatic Pressure (A) 1487 P.S.I.
 Initial Flow Period Minutes 30 (B) 69 P.S.I. to (C) 74 P.S.I.
 Initial Closed In Period Minutes 30 (D) 997 P.S.I.
 Final Flow Period Minutes 30 (E) 74 P.S.I. to (F) 78 P.S.I.
 Final Closed In Period Minutes 30 (G) 958 P.S.I.
 Final Hydrostatic Pressure (H) 1464 P.S.I.

GENERAL INFORMATION

Client Information:

Company: REIF OIL+GAS CO LLC

Contact: DON REIF

Phone: Fax: e-mail:

Site Information:

Contact: JOSH AUSTIN

Phone: Fax: e-mail:

Well Information:

Name: D STEINERT #2

Operator: REIF OIL+GAS CO LLC

Location-Downhole:

Location-Surface: S3/17S/15W

Test Information:

Company: DIAMOND TESTING

Representative: JOHN RIEDL

Supervisor: JOSH AUSTIN

Test Type: CONVENTIONAL Job Number: D960

Test Unit:

Start Date: 2011/05/20 Start Time: 18:15:00

End Date: 2011/05/21 End Time: 00:50:00

Report Date: 2011/05/21 Prepared By: JOHN RIEDL

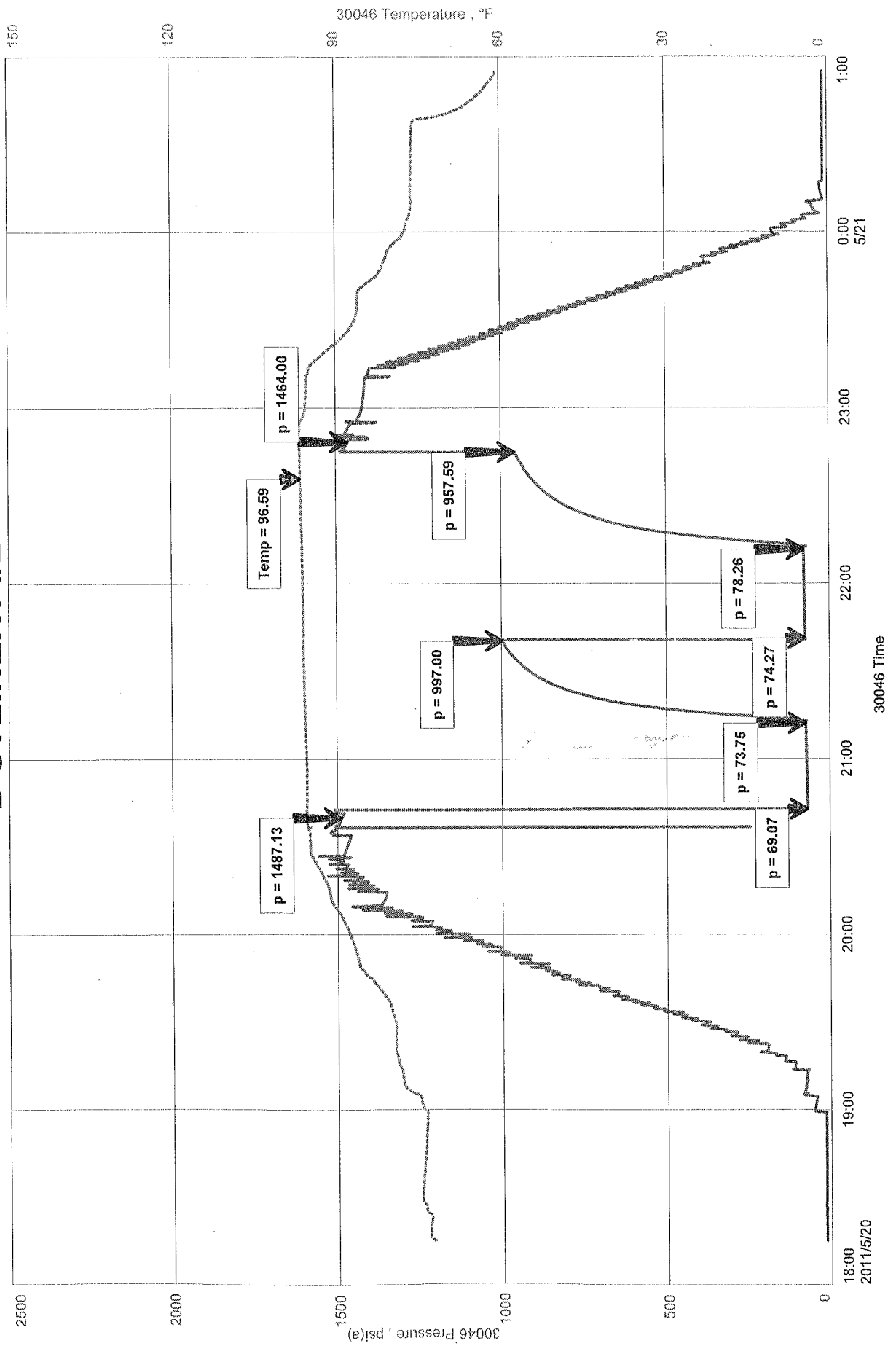
Remarks: Qualified By: JOSH AUSTIN

RECOVERY: 70' DRILLING MUD WITH SHOW OF OIL IN TOOL

REIF OIL+GAS CO LLC
Start Test Date: 2011/05/20
Final Test Date: 2011/05/21

D STEINERT #2
Formation: TOPEKA
Job Number: D960

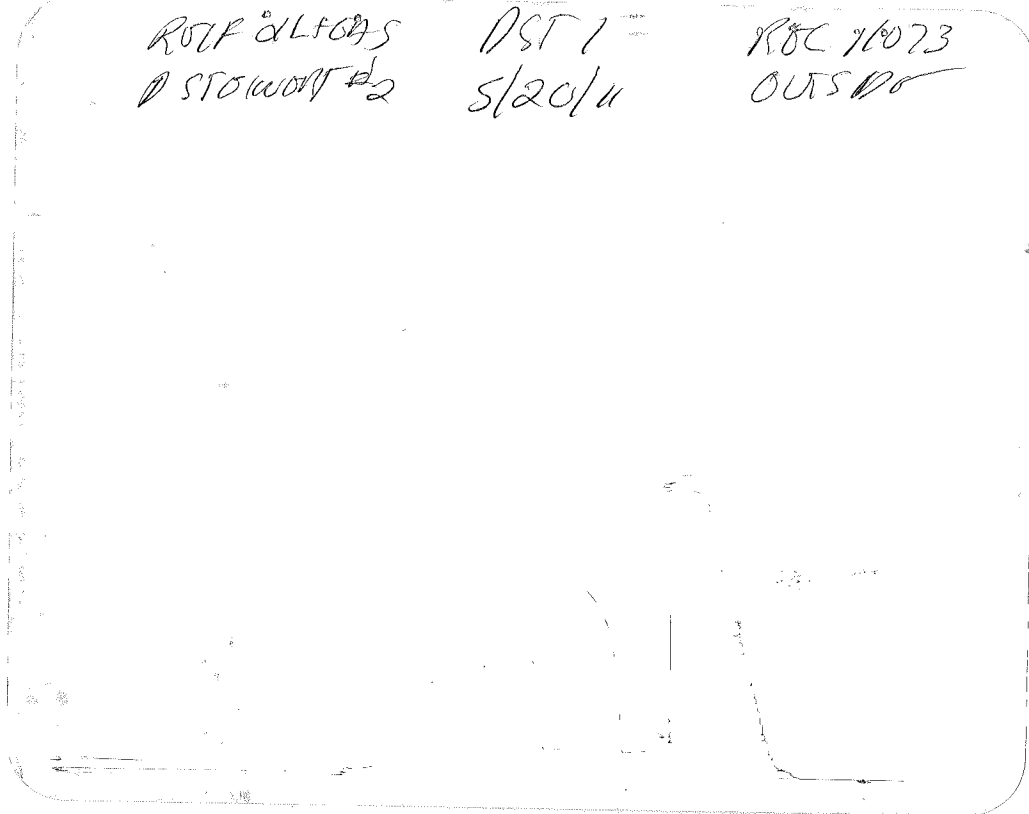
D STEINERT #2



ROOF ALFORDS
 @ STOKWORTH #2

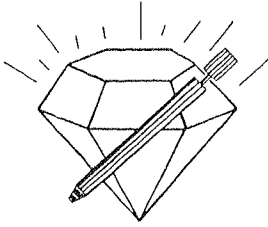
DST 1
 5/20/11

RBC 71073
 OUTSIDE



This is an actual photograph of recorder chart.

| POINT | PRESSURE | | Elec. |
|----------------------------------|---------------|----------------|-------|
| | Field Reading | Office Reading | |
| (A) Initial Hydrostatic Mud | 1487 | 1487 | PSI |
| (B) First Initial Flow Pressure | 69 | 69 | PSI |
| (C) First Final Flow Pressure | 74 | 74 | PSI |
| (D) Initial Closed-in Pressure | 997 | 997 | PSI |
| (E) Second Initial Flow Pressure | 74 | 74 | PSI |
| (F) Second Final Flow Pressure | 78 | 78 | PSI |
| (G) Final Closed-in Pressure | 958 | 958 | PSI |
| (H) Final Hydrostatic Mud | 1464 | 1464 | PSI |



DIAMOND TESTING

P.O. Box 157
HOISINGTON, KANSAS 67544
(620) 653-7550 • (800) 542-7313
STC 30046.D961

Company Reif Oil & Gas Co. LLC Lease & Well No. D. Steinert No. 2
Elevation 1972 KB Formation Lansing "A" - "F" Effective Pay -- Ft. Ticket No. J2756
Date 5-21-11 Sec. 3 Twp. 17S Range 15W County Barton State Kansas
Test Approved By Josh R. Austin Diamond Representative John C. Riedl

Formation Test No. 2 Interval Tested from 3,258 ft. to 3,345 ft. Total Depth 3,345 ft.
Packer Depth 3,253 ft. Size 6 3/4 in. Packer Depth -- ft. Size -- in.
Packer Depth 3,258 ft. Size 6 3/4 in. Packer Depth -- ft. Size -- in.
Depth of Selective Zone Set ft.

Top Recorder Depth (Inside) 3,261 ft. Recorder Number 30046 Cap. 6,000 psi
Bottom Recorder Depth (Outside) 3,342 ft. Recorder Number 11073 Cap. 4,000 psi
Below Straddle Recorder Depth ft. Recorder Number Cap. psi

Drilling Contractor Southwind Drilling, Inc. - Rig 70 Drill Collar Length 120 ft. I.D. 2 1/4 in.
Mud Type Chemical Viscosity 51 Weight Pipe Length -- ft. I.D. -- in.
Weight 9.0 Water Loss 12.0 cc. Drill Pipe Length 3,118 ft. I.D. 3 1/2 in.
Chlorides 10,700 P.P.M. Test Tool Length 20 ft. Tool Size 3 1/2 - IF in.
Jars: Make Sterling Serial Number Not Run Anchor Length 87 ft. Size 4 1/2 - PH in.
Did Well Flow? No Reversed Out No Surface Choke Size 1 in. Bottom Choke Size 5/8 in.
Main Hole Size 7 7/8 in. Tool Joint Size 4 1/2 - XH in.

Blow: 1st Open: Weak, surface blow throughout. No blow back during shut-in.
2nd Open: Weak, 2 in., blow decreasing to 1/2 in. by end. No blow back during shut-in.

Recovered 150 ft. of gas in pipe
Recovered 40 ft. of oil cut mud = .196800 bbls. (Grind out: 25%-oil; 75%-mud)
Recovered 40 ft. of TOTAL FLUID = .196800 bbls.
Recovered ft. of
Recovered ft. of
Remarks

Time Set Packer(s) 8:30 ~~AM~~ P.M. Time Started Off Bottom 11:00 ~~AM~~ P.M. Maximum Temperature 97°
Initial Hydrostatic Pressure (A) 1564 P.S.I.
Initial Flow Period Minutes 30 (B) 30 P.S.I. to (C) 40 P.S.I.
Initial Closed In Period Minutes 30 (D) 153 P.S.I.
Final Flow Period Minutes 30 (E) 45 P.S.I. to (F) 53 P.S.I.
Final Closed In Period Minutes 60 (G) 290 P.S.I.
Final Hydrostatic Pressure (H) 1542 P.S.I.

GENERAL INFORMATION

Client Information:

Company: REIF OIL+GAS CO LLC

Contact: DON REIF

Phone: Fax: e-mail:

Site Information:

Contact: JOSH AUSTIN

Phone: Fax: e-mail:

Well Information:

Name: D STEINERT #2

Operator: REIF OIL+GAS CO LLC

Location-Downhole:

Location-Surface: S3/17S/15W

Test Information:

Company: DIAMOND TESTING

Representative: JOHN RIEDL

Supervisor: JOSH AUSTIN

Test Type: CONVENTIONAL Job Number: D961

Test Unit:

Start Date: 2011/05/21 Start Time: 18:50:00

End Date: 2011/05/22 End Time: 00:50:00

Report Date: 2011/05/22 Prepared By: JOHN RIEDL

Qualified By: JOSH AUSTIN

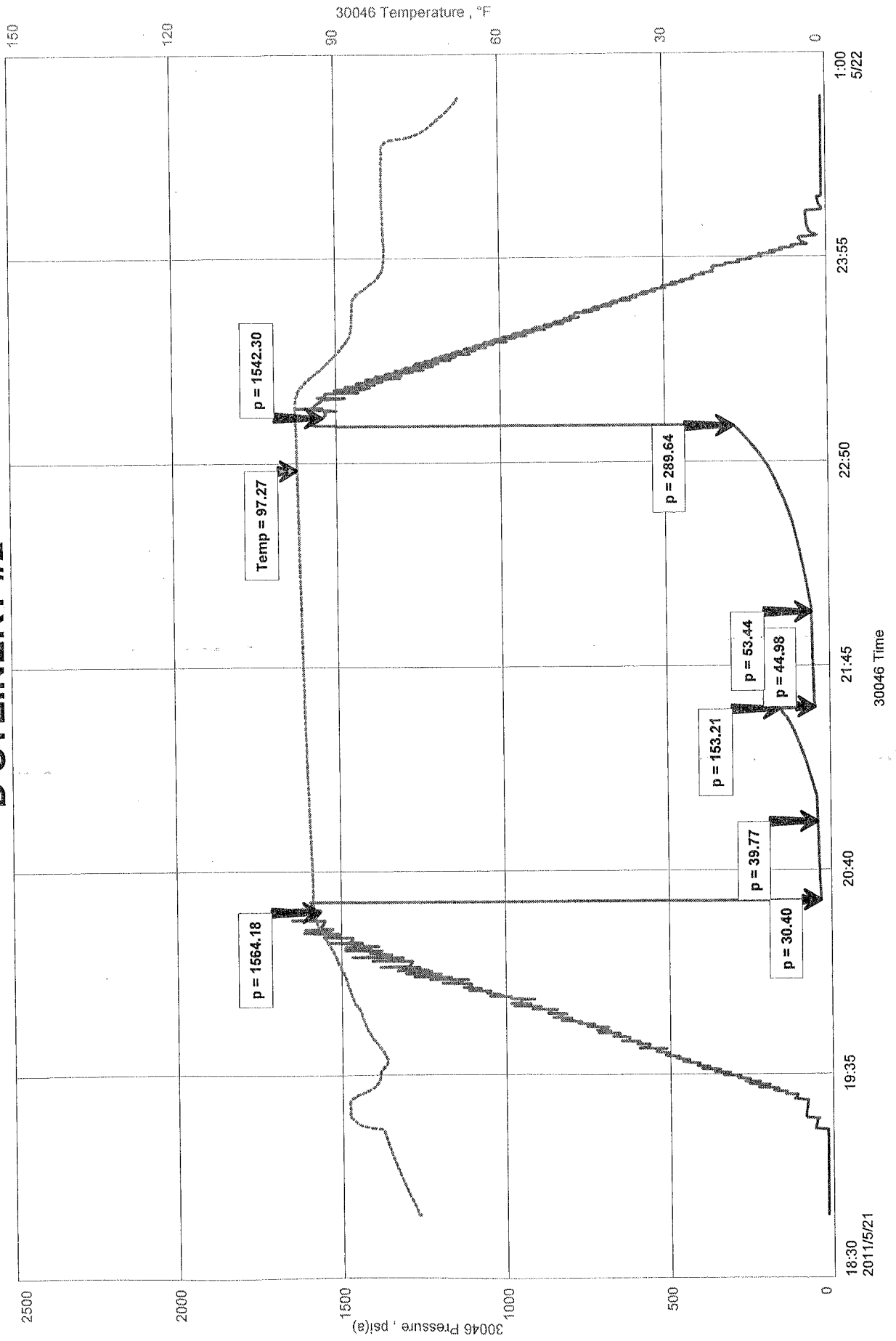
Remarks:

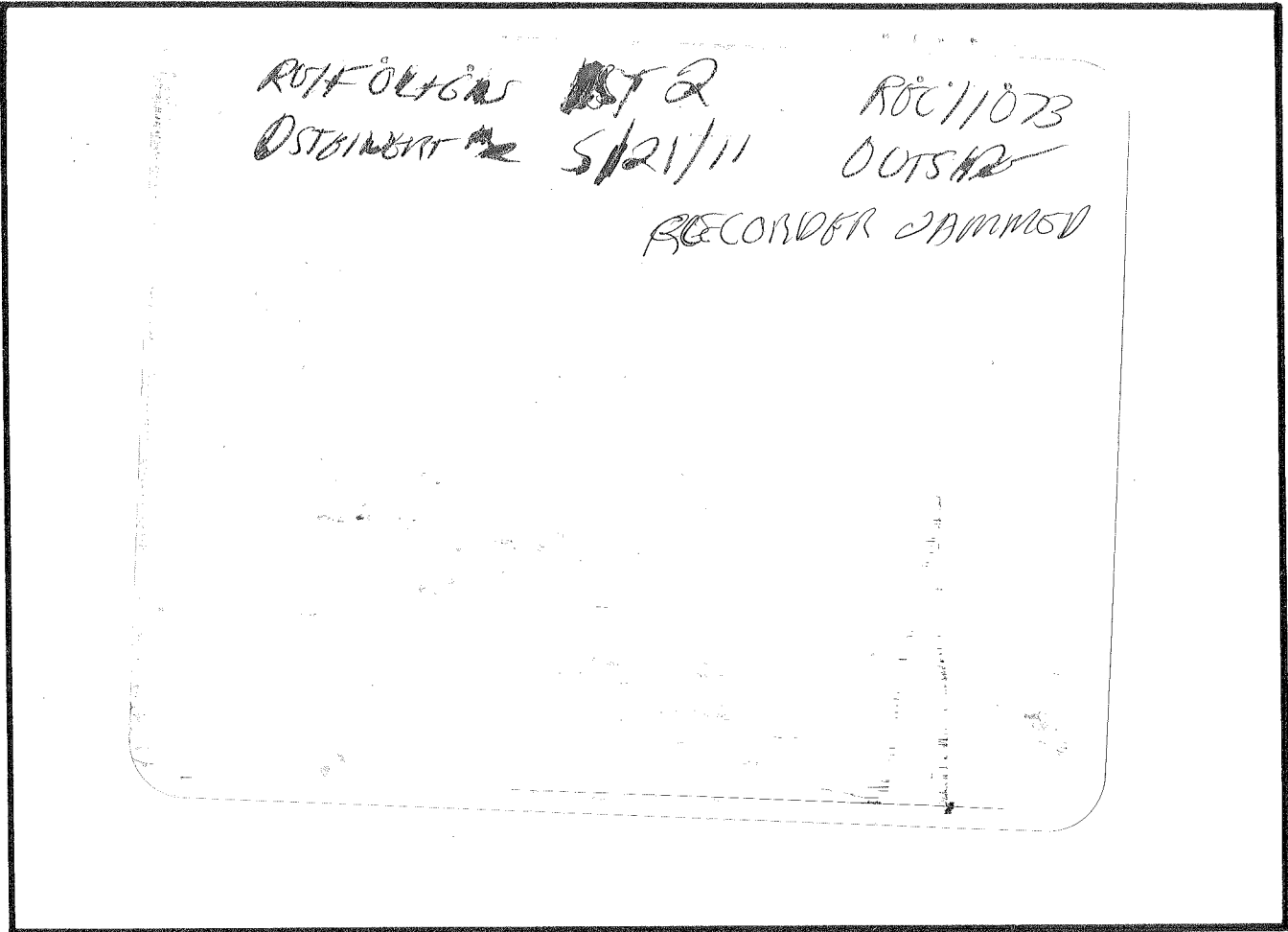
RECOVERY: 150' GAS IN PIPE, 40' OIL CUT MUD

D STEINERT #2
Formation: LANS A-F
Job Number: D961

D STEINERT #2

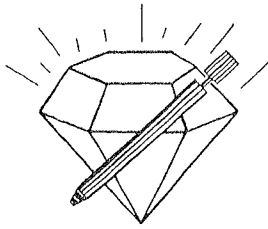
REIF OIL+GAS CO LLC
Start Test Date: 2011/05/21
Final Test Date: 2011/05/22





This is an actual photograph of recorder chart.

| POINT | PRESSURE | | |
|---------------------------------------|---------------|----------------------|-----|
| | Field Reading | Elec. Office Reading | |
| (A) Initial Hydrostatic Mud | 1564 | 1564 | PSI |
| (B) First Initial Flow Pressure..... | 30 | 30 | PSI |
| (C) First Final Flow Pressure | 40 | 40 | PSI |
| (D) Initial Closed-in Pressure | 153 | 153 | PSI |
| (E) Second Initial Flow Pressure..... | 45 | 45 | PSI |
| (F) Second Final Flow Pressure..... | 53 | 53 | PSI |
| (G) Final Closed-in Pressure..... | 290 | 290 | PSI |
| (H) Final Hydrostatic Mud | 1542 | 1542 | PSI |



DIAMOND TESTING

P.O. Box 157
HOISINGTON, KANSAS 67544
(620) 653-7550 • (800) 542-7313
STC 30046.D962

Company Reif Oil & Gas Co. LLC Lease & Well No. D. Steinert No. 2

Elevation 1972 KB Formation Lansing "H" - "K" Effective Pay -- Ft. Ticket No. J2757

Date 5-22-11 Sec. 3 Twp. 17S Range 15W County Barton State Kansas

Test Approved By Josh R. Austin Diamond Representative John C. Riedl

Formation Test No. 3 Interval Tested from 3,393 ft. to 3,470 ft. Total Depth 3,470 ft.

Packer Depth 3,388 ft. Size 6 3/4 in. Packer Depth -- ft. Size -- in.

Packer Depth 3,393 ft. Size 6 3/4 in. Packer Depth -- ft. Size -- in.

Depth of Selective Zone Set -- ft.

Top Recorder Depth (Inside) 3,396 ft. Recorder Number 30046 Cap. 6,000 psi

Bottom Recorder Depth (Outside) 3,467 ft. Recorder Number 11073 Cap. 4,000 psi

Below Straddle Recorder Depth -- ft. Recorder Number -- Cap. -- psi

Drilling Contractor Southwind Drilling, Inc. - Rig 70 Drill Collar Length 120 ft. I.D. 2 1/4 in.

Mud Type Chemical Viscosity 44 Weight Pipe Length -- ft. I.D. -- in.

Weight 9.1 Water Loss 15.0 cc. Drill Pipe Length 3,253 ft. I.D. 3 1/2 in.

Chlorides 10,700 P.P.M. Test Tool Length 20 ft. Tool Size 3 1/2 - IF in.

Jobs: Make Sterling Serial Number Not Run Anchor Length 77 ft. Size 4 1/2 - FH in.

Did Well Flow? No Reversed Out No Surface Choke Size 1 in. Bottom Choke Size 5/8 in.

Main Hole Size 7 7/8 in. Tool Joint Size 4 1/2 - XH in.

Blow: 1st Open: Fair, 4 in., blow. No blow back during shut-in.

2nd Open: Fair, 3 in., blow. No blow back during shut-in.

Recovered 140 ft. of mud cut water = .875000 bbls. (Grind out: 40%-mud; 60%-water)

Recovered -- ft. of Chlorides: 65,000 Ppm

Recovered -- ft. of

Recovered -- ft. of

Recovered -- ft. of

Remarks

Time Set Packer(s) 6:00 P.M. Time Started Off Bottom 9:00 P.M. Maximum Temperature 98°

Initial Hydrostatic Pressure (A) 1684 P.S.I.

Initial Flow Period Minutes 30 (B) 35 P.S.I. to (C) 75 P.S.I.

Initial Closed In Period Minutes 45 (D) 697 P.S.I.

Final Flow Period Minutes 45 (E) 83 P.S.I. to (F) 97 P.S.I.

Final Closed In Period Minutes 60 (G) 532 P.S.I.

Final Hydrostatic Pressure (H) 1623 P.S.I.

GENERAL INFORMATION

Client Information:

Company: REIF OIL+GAS CO LLC

Contact: DON REIF

Phone: Fax: e-mail:

Site Information:

Contact: JOSH AUSTIN

Phone: Fax: e-mail:

Well Information:

Name: D STEINERT #2

Operator: REIF OIL+GAS CO LLC

Location-Downhole:

Location-Surface: S3/17S/15W

Test Information:

Company: DIAMOND TESTING

Representative: JOHN RIEDL

Supervisor: JOSH AUSTIN

Test Type: CONVENTIONAL

Job Number: D962

Test Unit:

Start Date: 2011/05/22

Start Time: 16:45:00

End Date: 2011/05/22

End Time: 23:00:00

Report Date: 2011/05/22

Prepared By: JOHN RIEDL

Remarks:

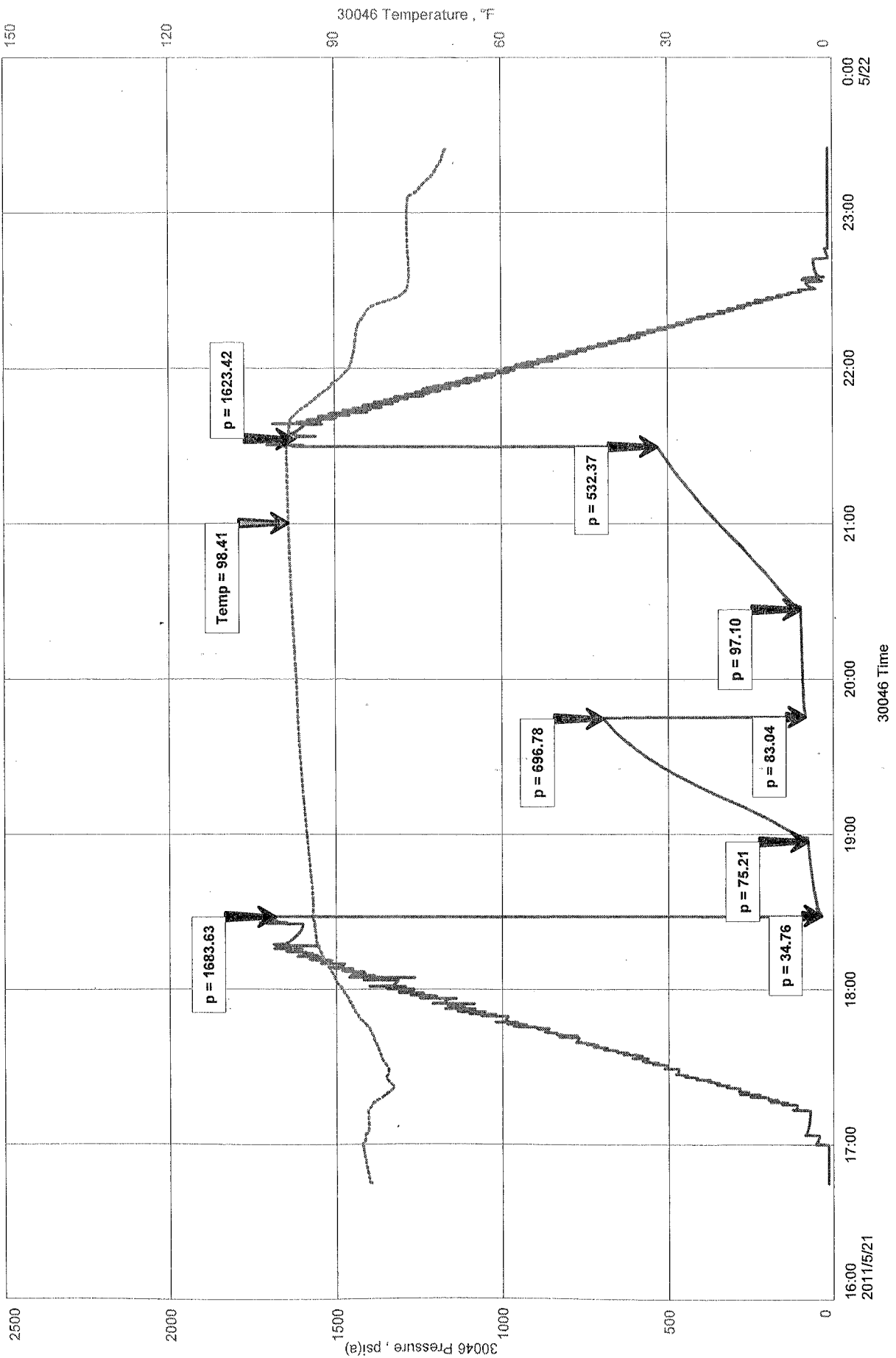
Qualified By: JOSH AUSTIN

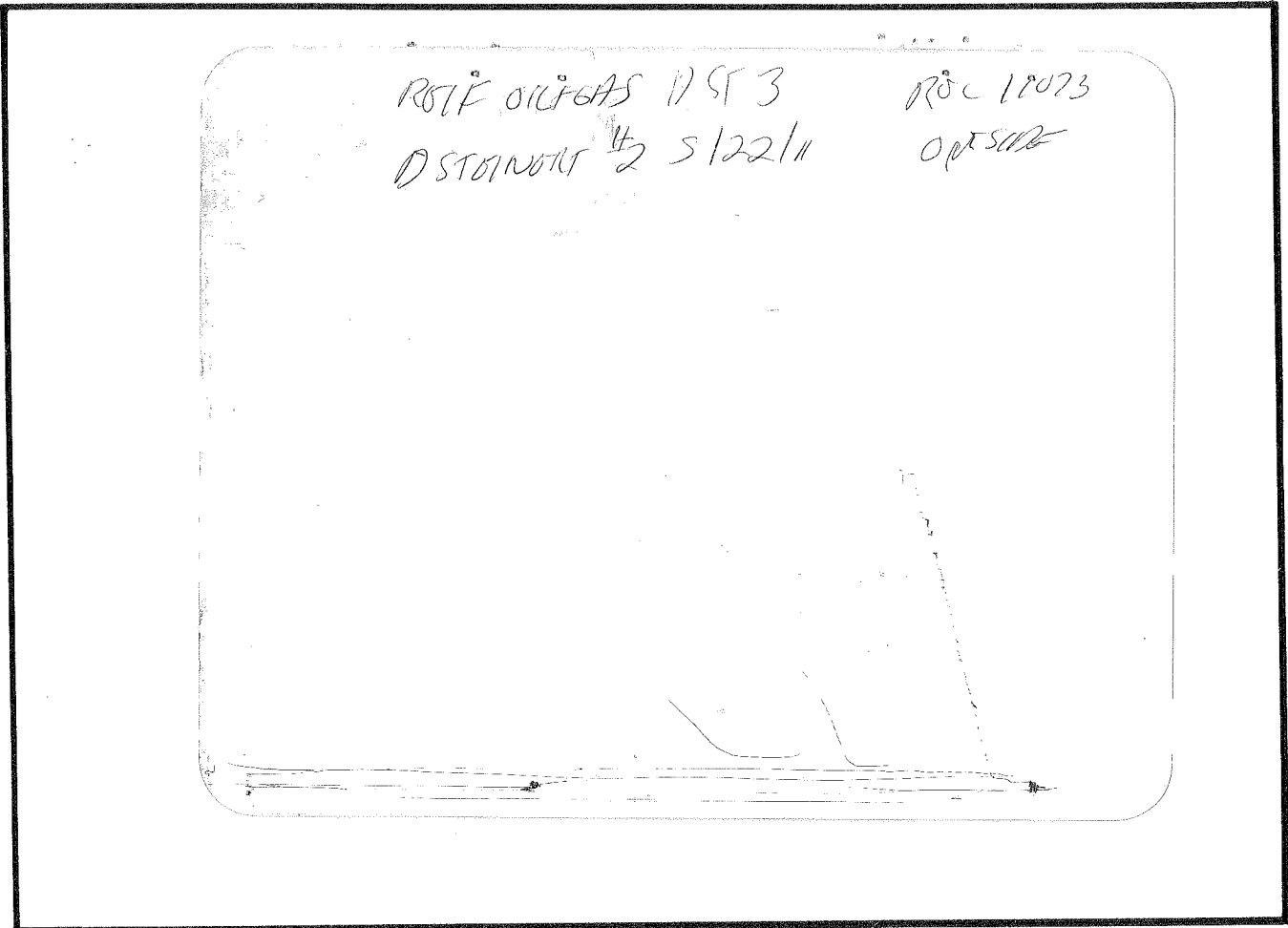
RECOVERY: 140' MUDDY WATER

REIF OIL+GAS CO LLC
Start Test Date: 2011/05/22
Final Test Date: 2011/05/22

D STEINERT #2
Formation: LANSING H-K
Job Number: D962

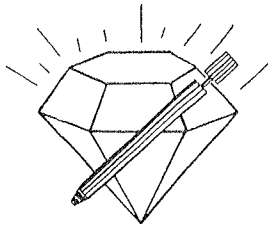
D STEINERT #2





This is an actual photograph of recorder chart.

| POINT | PRESSURE | | Elec. Office Reading | PSI |
|---------------------------------------|------------------|------|----------------------------|-----|
| | Field Reading | | | |
| (A) Initial Hydrostatic Mud | 1684 | 1684 | 1684 | PSI |
| (B) First Initial Flow Pressure..... | 35 | 35 | 35 | PSI |
| (C) First Final Flow Pressure | 75 | 75 | 75 | PSI |
| (D) Initial Closed-in Pressure | 697 | 697 | 697 | PSI |
| (E) Second Initial Flow Pressure..... | 83 | 83 | 83 | PSI |
| (F) Second Final Flow Pressure..... | 97 | 97 | 97 | PSI |
| (G) Final Closed-in Pressure..... | 532 | 532 | 532 | PSI |
| (H) Final Hydrostatic Mud..... | 1623 | 1623 | 1623 | PSI |



DIAMOND TESTING

P.O. Box 157
HOISINGTON, KANSAS 67544
(620) 653-7550 • (800) 542-7313
STC 30046.D963

Company Reif Oil & Gas Co. LLC Lease & Well No. D. Steinert No. 2

Elevation 1972 KB Formation Arbuckle Effective Pay -- Ft. Ticket No. J2758

Date 5-23-11 Sec. 3 Twp. 17S Range 15W County Barton State Kansas

Test Approved By James C. Musgrove Diamond Representative John C. Riedl

Formation Test No. 4 Interval Tested from 3,472 ft. to 3,536 ft. Total Depth 3,536 ft.

Packer Depth 3,467 ft. Size 6 3/4 in. Packer Depth -- ft. Size -- in.

Packer Depth 3,472 ft. Size 6 3/4 in. Packer Depth -- ft. Size -- in.

Depth of Selective Zone Set ft.

Top Recorder Depth (Inside) 3,475 ft. Recorder Number 30046 Cap. 6,000 psi

Bottom Recorder Depth (Outside) 3,533 ft. Recorder Number 11073 Cap. 4,000 psi

Below Straddle Recorder Depth ft. Recorder Number Cap. psi

Drilling Contractor Southwind Drilling, Inc. - Rig 70 Drill Collar Length 120 ft. I.D. 2 1/4 in.

Mud Type Chemical Viscosity 50 Weight Pipe Length -- ft. I.D. -- in.

Weight 9.1 Water Loss 12.0 cc. Drill Pipe Length 3,332 ft. I.D. 3 1/2 in.

Chlorides 11,000 P.P.M. Test Tool Length 20 ft. Tool Size 3 1/2 - IF in.

Jars: Make Sterling Serial Number Not Run Anchor Length 64 ft. Size 4 1/2 - FH in.

Did Well Flow? No Reversed Out No Surface Choke Size 1 in. Bottom Choke Size 5/8 in.

Main Hole Size 7 7/8 in. Tool Joint Size 4 1/2 - XH in.

Blow: 1st Open: Weak, 2 in., blow. No blow back during shut-in.

2nd Open: Very weak, 1/2 in., blow. No blow back during shut-in.

Recovered 20 ft. of gassy oil = .284600 bbls. (Grind out: 10%-gas; 90%-oil)

Recovered 120 ft. of gas & oil cut mud = .590400 bbls. (Grind out: 10%-gas; 30%-oil; 60%-mud)

Recovered 140 ft. of TOTAL FLUID = .875000 bbls.

Recovered ft. of

Recovered ft. of

Remarks

Time Set Packer(s) 1:40 ~~XXX~~ P.M. Time Started Off Bottom 4:25 ~~XXX~~ P.M. Maximum Temperature 97°

Initial Hydrostatic Pressure (A) 1686 P.S.I.

Initial Flow Period Minutes 45 (B) 56 P.S.I. to (C) 81 P.S.I.

Initial Closed In Period Minutes 30 (D) 783 P.S.I.

Final Flow Period Minutes 45 (E) 87 P.S.I. to (F) 87 P.S.I.

Final Closed In Period Minutes 45 (G) 644 P.S.I.

Final Hydrostatic Pressure (H) 1670 P.S.I.

GENERAL INFORMATION

Client Information:

Company: REIF OIL+GAS CO LLC

Contact: DON REIF

Phone: Fax: e-mail:

Site Information:

Contact: JIM MUSGROVE

Phone: Fax: e-mail:

Well Information:

Name: D STEINERT #2

Operator: REIF OIL+GAS CO LLC

Location-Downhole:

Location-Surface: S3/17S/15W

Test Information:

Company: DIAMOND TESTING

Representative: JOHN RIEDL

Supervisor: JIM MUSGROVE

Test Type: CONVENTIONAL

Job Number: D963

Test Unit:

Start Date: 2011/05/23

Start Time: 11:30:00

End Date: 2011/05/23

End Time: 18:10:00

Report Date: 2011/05/23

Prepared By: JOHN RIEDL

Remarks:

Qualified By: JIM MUSGROVE

RECOVERY: 20' CLEAN OIL, 120, OIL+GAS CUT MUD

REIF OIL+GAS CO LLC

Start Test Date: 2011/05/23

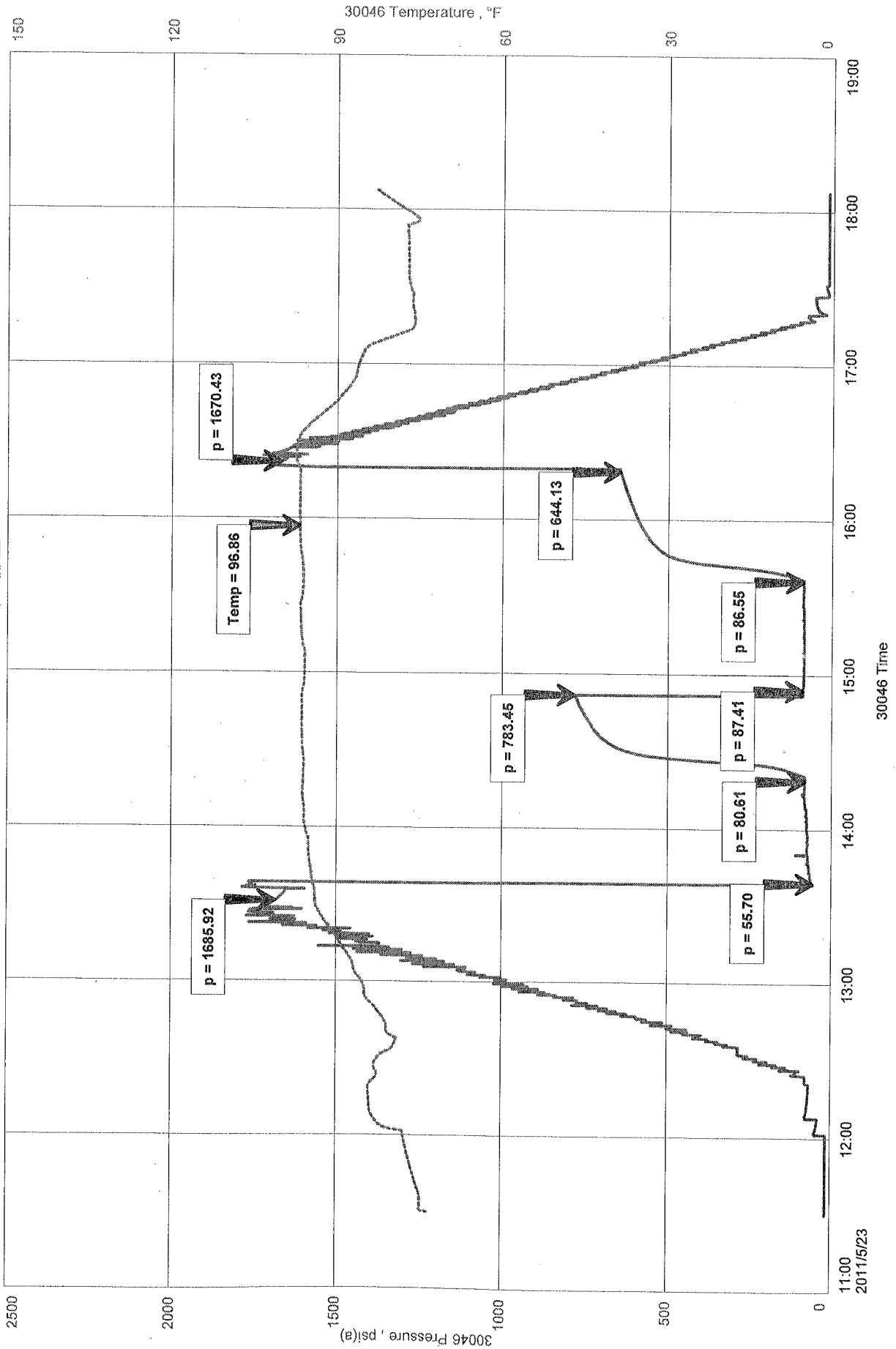
Final Test Date: 2011/05/23

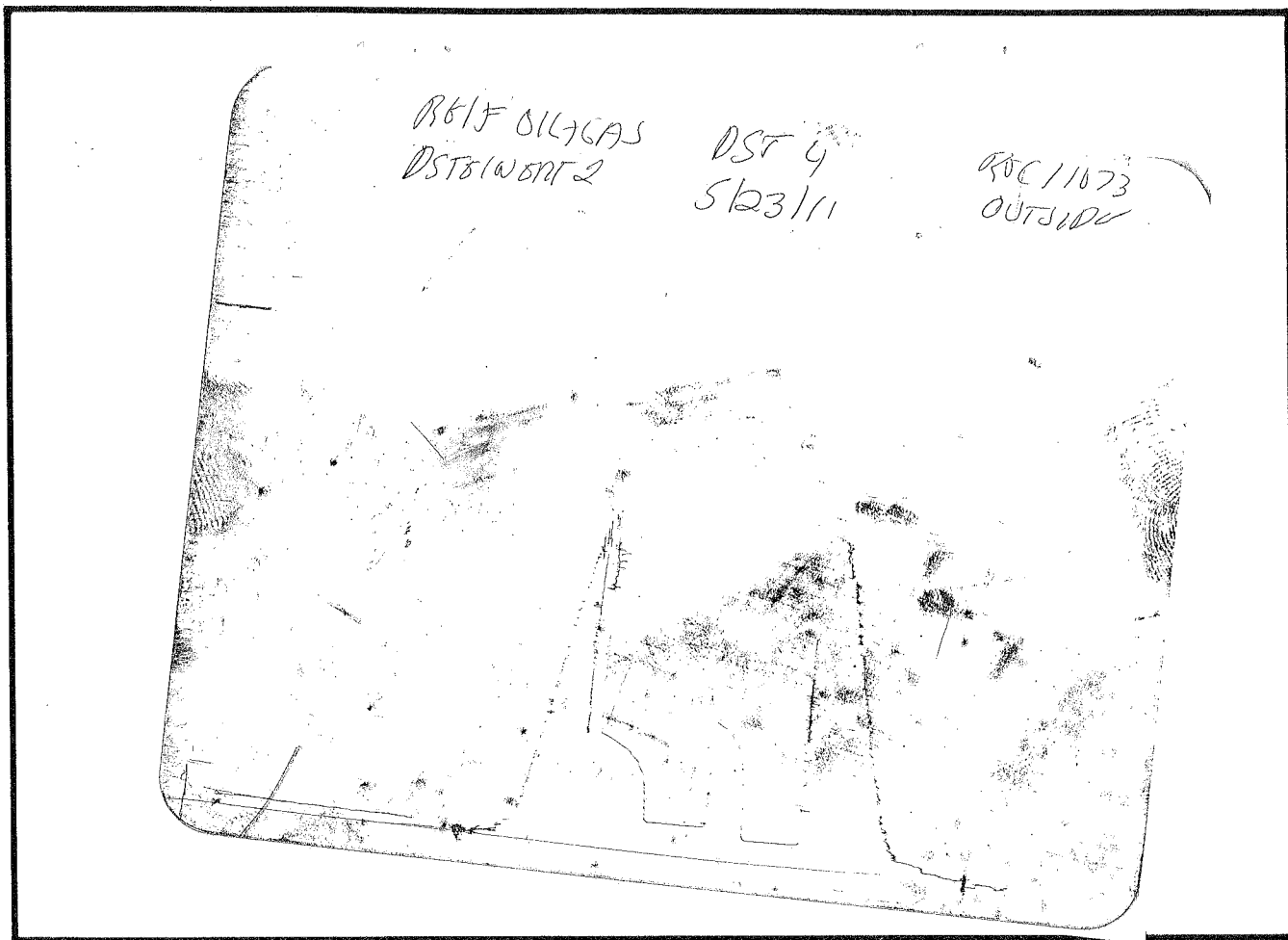
D STEINERT #2

D STEINERT #2

Formation: ARBUCKLE

Job Number: D963





This is an actual photograph of recorder chart.

| POINT | PRESSURE | | Elec. Office Reading | PSI |
|---------------------------------------|------------------|------|----------------------------|-----|
| | Field Reading | | | |
| (A) Initial Hydrostatic Mud | 1686 | 1686 | | PSI |
| (B) First Initial Flow Pressure..... | 56 | 56 | | PSI |
| (C) First Final Flow Pressure | 81 | 81 | | PSI |
| (D) Initial Closed-in Pressure | 783 | 783 | | PSI |
| (E) Second Initial Flow Pressure..... | 87 | 87 | | PSI |
| (F) Second Final Flow Pressure..... | 87 | 87 | | PSI |
| (G) Final Closed-in Pressure..... | 644 | 644 | | PSI |
| (H) Final Hydrostatic Mud..... | 1670 | 1670 | | PSI |

GENERAL INFORMATION

Client Information:

Company: REIF OIL+GAS CO LLC

Contact: DON REIF

Phone: Fax: e-mail:

Site Information:

Contact: JIM MUSGROVE

Phone: Fax: e-mail:

Well Information:

Name: D STEINERT #2

Operator: REIF OIL+GAS CO LLC

Location-Downhole:

Location-Surface: S3/17S/15W

Test Information:

Company: DIAMOND TESTING

Representative: JOHN RIEDL

Supervisor: JIM MUSGROVE

Test Type: CONVENTIONAL

Job Number: D964

Test Unit:

Start Date: 2011/05/24

Start Time: 06:40:00

End Date: 2011/05/24

End Time: 16:05:00

Report Date: 2011/05/24

Prepared By: JOHN RIEDL

Remarks:

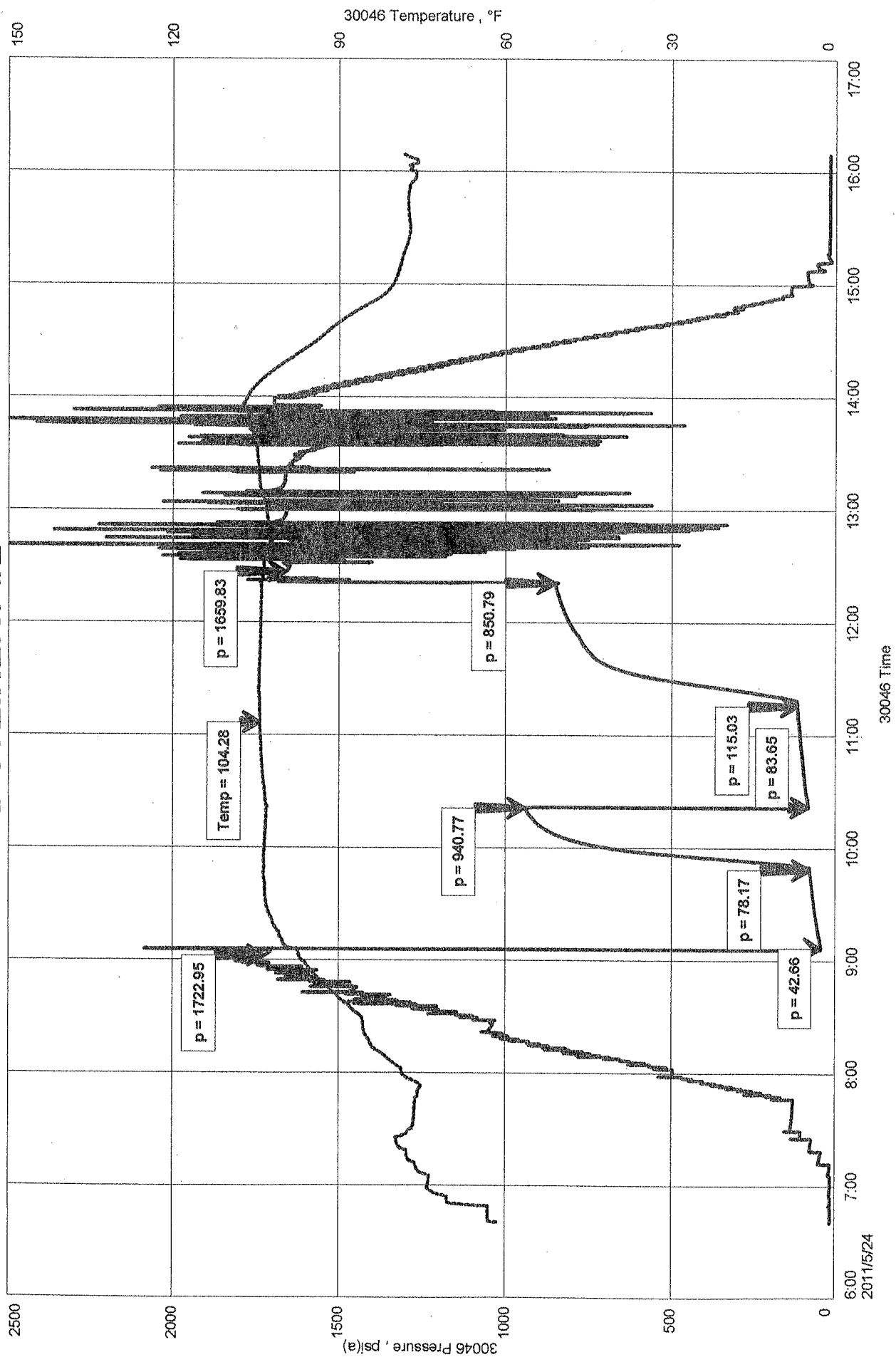
Qualified By: JIM MUSGROVE

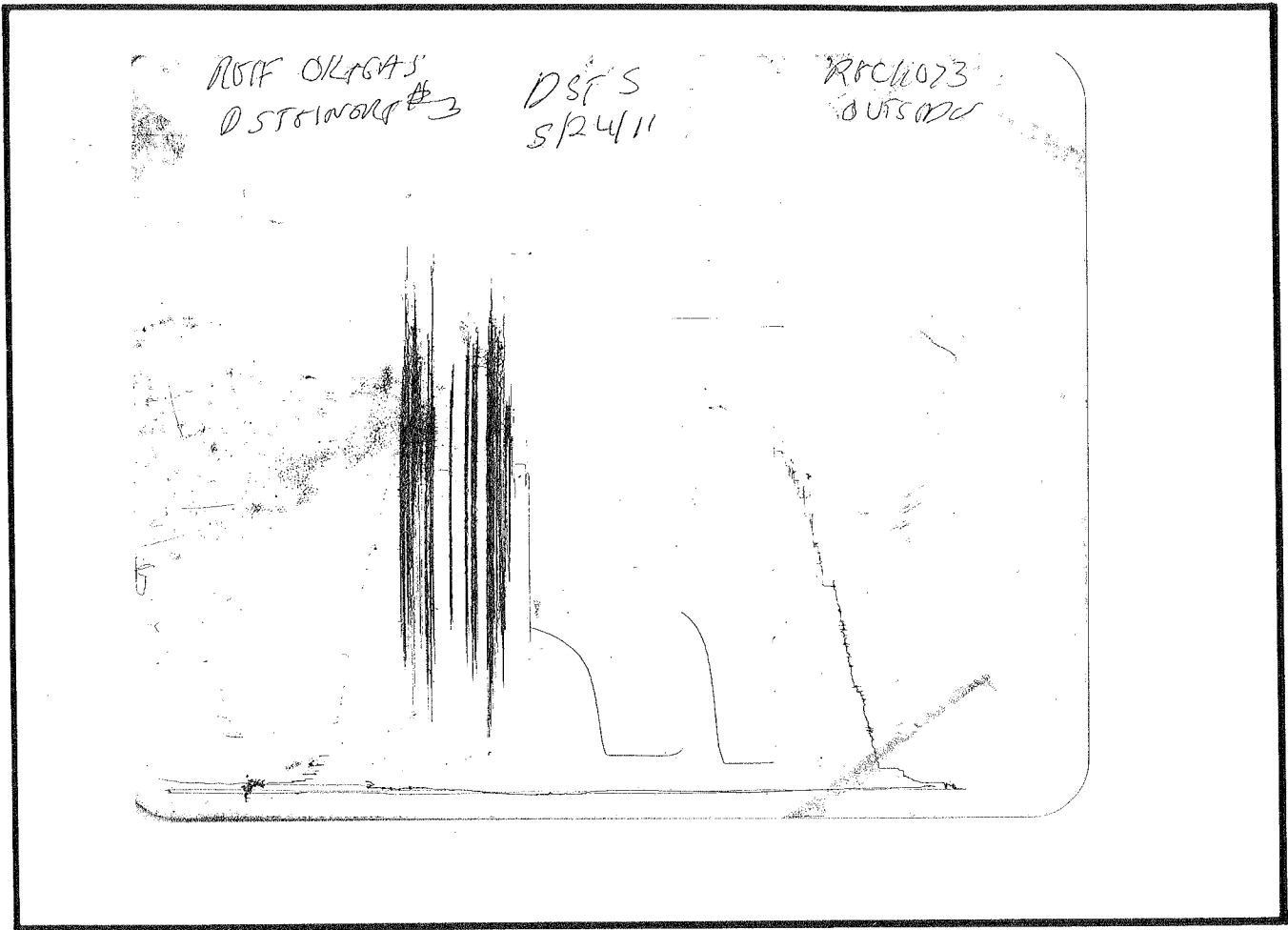
RECOVERY: 90' GAS CUT OIL, 120' SLIGHTLY OIL CUT MUDDY WATER

REIF OIL+GAS CO LLC
Start Test Date: 2011/05/24
Final Test Date: 2011/05/24

D STEINERT #2
Formation: ARBUCKLE
Job Number: D964

D STEINERT #2





This is an actual photograph of recorder chart.

| POINT | PRESSURE | | Elec. Office Reading | PSI |
|---------------------------------------|------------------|------|----------------------------|-----|
| | Field Reading | | | |
| (A) Initial Hydrostatic Mud | 1722 | 1722 | | PSI |
| (B) First Initial Flow Pressure..... | 43 | 43 | | PSI |
| (C) First Final Flow Pressure | 78 | 78 | | PSI |
| (D) Initial Closed-in Pressure | 941 | 941 | | PSI |
| (E) Second Initial Flow Pressure..... | 83 | 83 | | PSI |
| (F) Second Final Flow Pressure..... | 115 | 115 | | PSI |
| (G) Final Closed-in Pressure..... | 851 | 851 | | PSI |
| (H) Final Hydrostatic Mud | 1660 | 1660 | | PSI |