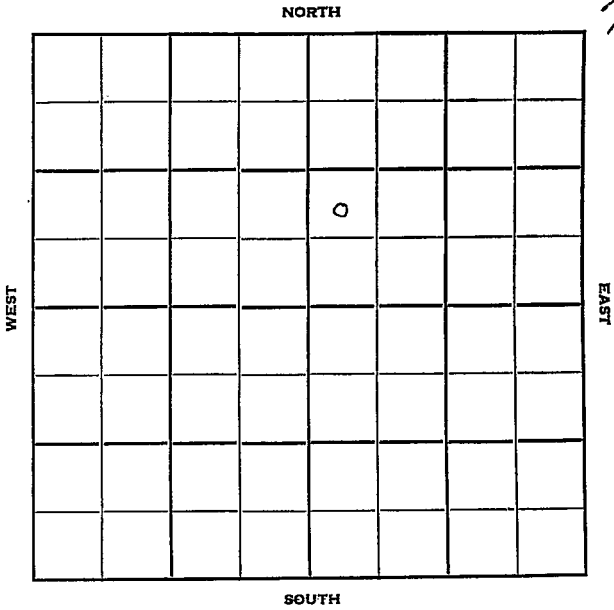


Section 15 Township 17 Range 8W

Well No. #1 Kratzer

Company Continental



Ellsworth

KANSAS ✓
R. 8 W

Sec. 15 Twp. 17

Well No. # 1 Kratzer Farm

Continental Company

Contractor
Edwards

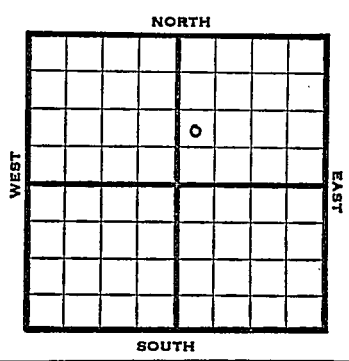
Ft. from N. Line

990 Ft. from S. Line

Ft. from E. Line

330 Ft. from W. Line

NW SW NE



1951 Elev. 1737' REPORT

10/10 Spud 10-4-51
10" @ 316'
Drlg. 2548'

10/24 Spud 10-4-51
D&A TD 3300
10" @ 316
Heeb. 2657 Br. lm. 2779
Lans. 2797 Cong. 3156
Simp. 3266 Arb. 3281
DST 3282-86 open 1 hr.
Rec. 6' mud
TD 3300
D&A

ABANDONED

County Ellsworth State Kansas

Sec. 15 (Blk. 17 (Sur. 8W (Twp.) 17 (Rge.) 8W Map No.

Operator Continental

Well No. 1 Farm Kratzer

Elev. 1737 Location NW SW NE

990 Ft. From S Line NE

330 Ft. From W Line Quarter

Ist. Report

Completion OCT 24 1951

Remarks Edwards Pool

Spudding Date 10-4-51

Drlg. Data D & A TD 3300

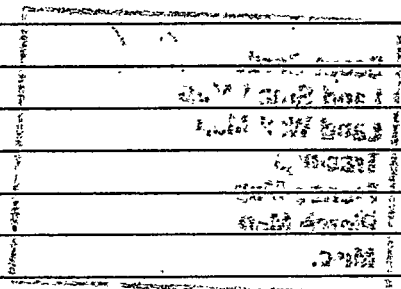
10" @ 316 Heeb. 2657 Br. line 2779

Lans. 2797 Cong. 3156 Simp. 3266

Arb. 3281 DST 3282-86 open 1 hr.

Rec. 6' mud TD 3300

D & A



J. E. TYRA