

# Sun Oil Well Cementing, Inc.

# DRILL STEM TEST DATA

P.O. Box 169

Great Bend, Kansas 67530

Lease	Williams	Well No.	#1	Date	7-29-80
County	Barton	Sec.	2	Twp.	12
		Rng.	14	Elevation	
Company	L. G. Stephenson & Co Inc.			Test No.	#1
Contractor	Red Tiger Drlg.	Rig #4		Zone Tested	Lansing
Charge To	L. G. Stephenson & Co. Inc.			Ticket #	3833
Approved By	James W. Spellman			Tester	Steve Jenkins

Initial Hydro Mud Press. .... 1728 ..... P.S.I.

Initial Flow Press. .... 51 ..... To ..... 41 ..... P.S.I. Initial Flow Period ..... 30 ..... Min.

Initial Shut-in Press. .... 630 ..... P.S.I. Initial Shut-in ..... 30 ..... Min.

Final Flow Press. .... 61 ..... To ..... 51 ..... P.S.I. Final Flow Period ..... 30 ..... Min.

Final Shut-in Press. .... 588 ..... P.S.I. Final Shut-in ..... 30 ..... Min.

Final Hydro Mud Press. .... 1718 ..... P.S.I. TIME TOOL OPEN ..... 12:10 p.m. ....

Temperature ..... 103 .....

Mud Weight ..... 10.1 ..... Viscosity ..... 39 .....

Fluid Loss ..... 11.1 .....

Interval Tested ..... 3226 ..... To ..... 3262 .....

Top Packer Depth ..... 3221 ..... Surface Choke Size .....

Bottom Packer Depth ..... 3226 ..... Bottom Choke Size ..... 5/8 .....

Total Depth ..... 3262 ..... Main Hole Size ..... 7 7/8 .....

Drill Pipe Size 4 1/2 XH Wt 4 1/2 XH Rubber Size ..... 6 3/4 .....

Drill Collar I.D. ... 2.25 ..... Ft. Run ..... none .....

Blow ... 1st opening: ... weak decreasing to very weak blow .....

2nd opening: very weak blow .....

Recovery .....

..... 60' mud .....

.....

.....

.....

Sun Oil Well Cementing, Inc.

DRILL STEM TEST DATA

P.O. Box 169

Great Bend, Kansas 67530

Lease	Williams	Well No.	#1	Date	7-30-80
County	Barton	Sec.	2	Twp.	17
		Rng.	14	Elevation	
Company	L. G. Stephenson & Co. Inc.			Test No.	#2
Contractor	Red Tiger Drlg. Co. Rig #4			Zone Tested	K.C.
Charge To	L. G. Stephenson & Co. Inc.			Ticket #	3834
Approved By	James W. Spellman			Tester	Steve Jenkins

Initial Hydro Mud Press. ....1738..... P.S.I.

Initial Flow Press. ....51 To ....41..... P.S.I. Initial Flow Period .... 30..... Min.

Initial Shut-in Press. ....51..... P.S.I. Initial Shut-in .... 30..... Min.

Final Flow Press. ....41 To ....41..... P.S.I. Final Flow Period .... 30..... Min.

Final Shut-in Press. ....51..... P.S.I. Final Shut-in .... 30..... Min.

Final Hydro Mud Press. ....1728..... P.S.I. TIME TOOL OPEN .....1:10 a.m.....

Temperature ..... 103.....

Mud Weight ....10.1..... Viscosity ..... 39.....

Fluid Loss ....11.6.....

Interval Tested .....3280..... To .....3305.....

Top Packer Depth ..... 3275..... Surface Choke Size .....

Bottom Packer Depth .... 3280..... Bottom Choke Size ..... 5/8.....

Total Depth ..... 3305..... Main Hole Size ..... 7 7/8.....

Drill Pipe Size ...4 1/2 XH Wt ...4 1/2 XH Rubber Size ..... 6 3/4.....

Drill Collar I.D. ....2.25..... Ft. Run .....none.....

Blow ....1st opening: very weak blow.....

2nd opening: very weak decreasing to surface blow dies 15 minutes.

Recovery .....

.....30' oil spotted mud.....

# Sun Oil Well Cementing, Inc.

# DRILL STEM TEST DATA

P.O. Box 169

Great Bend, Kansas 67530

Lease	Williams	Well No.	1	Date	7-30-80
County	Barton	Sec.	2	Twp.	17
		Rng.	14w	Elevation	1984 KB
Company	L. G. Stephenson & Co. Inc.			Test No.	#3
Contractor	Red Tiger Drlg. Co.	Rig #	#4	Zone Tested	K.C.
Charge To	L. G. Stephenson & Co. Inc.			Ticket #	3835
Approved By	James W. Spellman			Tester	Steve Jenkins

Initial Hydro Mud Press. 1769 P.S.I.

Initial Flow Press. 68 To 68 P.S.I. Initial Flow Period 30 Min.

Initial Shut-in Press. 237 P.S.I. Initial Shut-in 30 Min.

Final Flow Press. 88 To 88 P.S.I. Final Flow Period 30 Min.

Final Shut-in Press. 361 P.S.I. Final Shut-in 30 Min.

Final Hydro Mud Press. 1759 P.S.I. TIME TOOL OPEN 9:00 p.m.

Temperature 103

Mud Weight 9.9 Viscosity 41

Fluid Loss 11.0

Interval Tested 3344 To 3435

Top Packer Depth 3339 Surface Choke Size

Bottom Packer Depth 3344 Bottom Choke Size 5/8

Total Depth 3435 Main Hole Size 7 7/8

Drill Pipe Size 4 1/2 XH Wt 4 1/2 XH Rubber Size 6 3/4

Drill Collar I.D. 2.25 Ft. Run none

Blow 1st opening: very weak blow  
2nd opening: Very weak blow

Recovery

40' oil cut mud (15% oil)

# Sun Oil Well Cementing, Inc.

# DRILL STEM TEST DATA

P.O. Box 169

Great Bend, Kansas 67530

Lease	Williams	Well No.	#1	Date	7-31-80
County	Barton	Sec.	2	Twp.	17
		Rng.	14w	Elevation	
Company	L. G. Stephenson & Co. Inc.			Test No.	#4
Contractor	Red Tiger Drlg. Co. Rig #4			Zone Tested	Arbuckle
Charge To	L. G. Stephenson & Co. Inc.			Ticket #	3836
Approved By	James W. Spellman			Tester	Steve Jenkins

Initial Hydro Mud Press. 1787 P.S.I.

Initial Flow Press. 72 To 72 P.S.I. Initial Flow Period 30 Min.

Initial Shut-in Press. 940 P.S.I. Initial Shut-in 30 Min.

Final Flow Press. 88 To 88 P.S.I. Final Flow Period 30 Min.

Final Shut-in Press. 929 P.S.I. Final Shut-in 30 Min.

Final Hydro Mud Press. 1777 P.S.I. TIME TOOL OPEN 11:00 a.m.

Temperature 105

Mud Weight 9.9 Viscosity 40

Fluid Loss 11.0

Interval Tested 3431 To 3495

Top Packer Depth 3426 Surface Choke Size \_\_\_\_\_

Bottom Packer Depth 3431 Bottom Choke Size 5/8

Total Depth 3495 Main Hole Size 7 7/8

Drill Pipe Size 4 1/2 XH Wt 4 1/2 XH Rubber Size 6 3/4

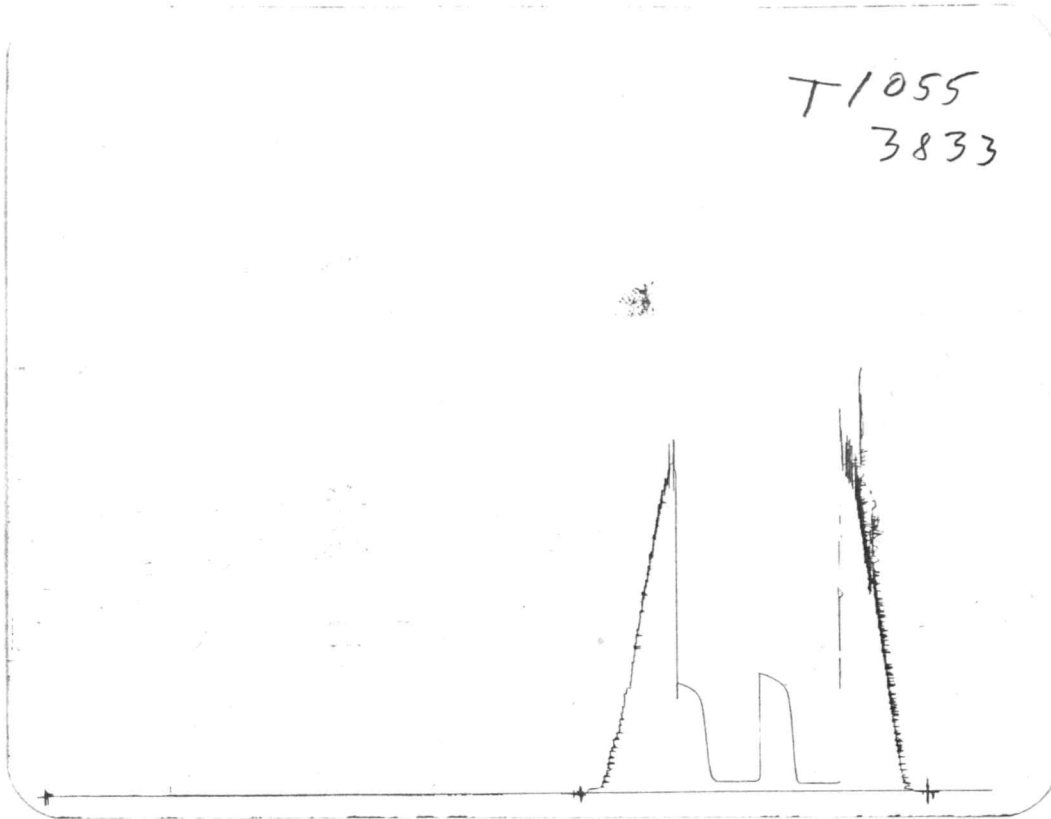
Drill Collar I.D. 2.25 Ft. Run none

Blow 1st opening: very weak blow  
2nd opening: no blow

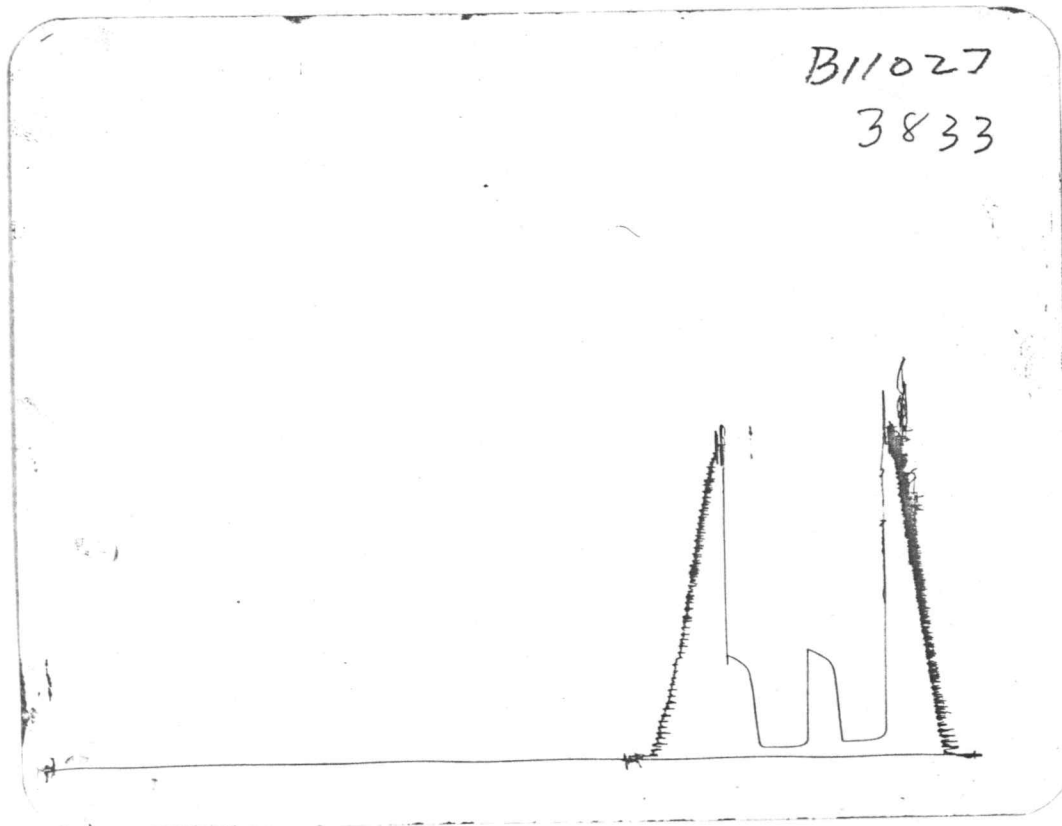
Recovery \_\_\_\_\_

80' mud oil specked mud on tool

TOP

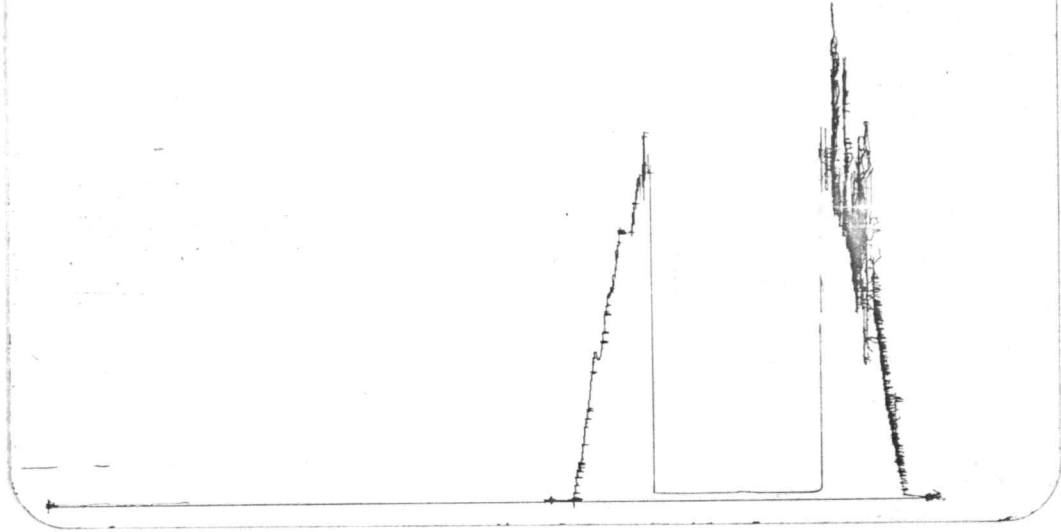


BOTTOM



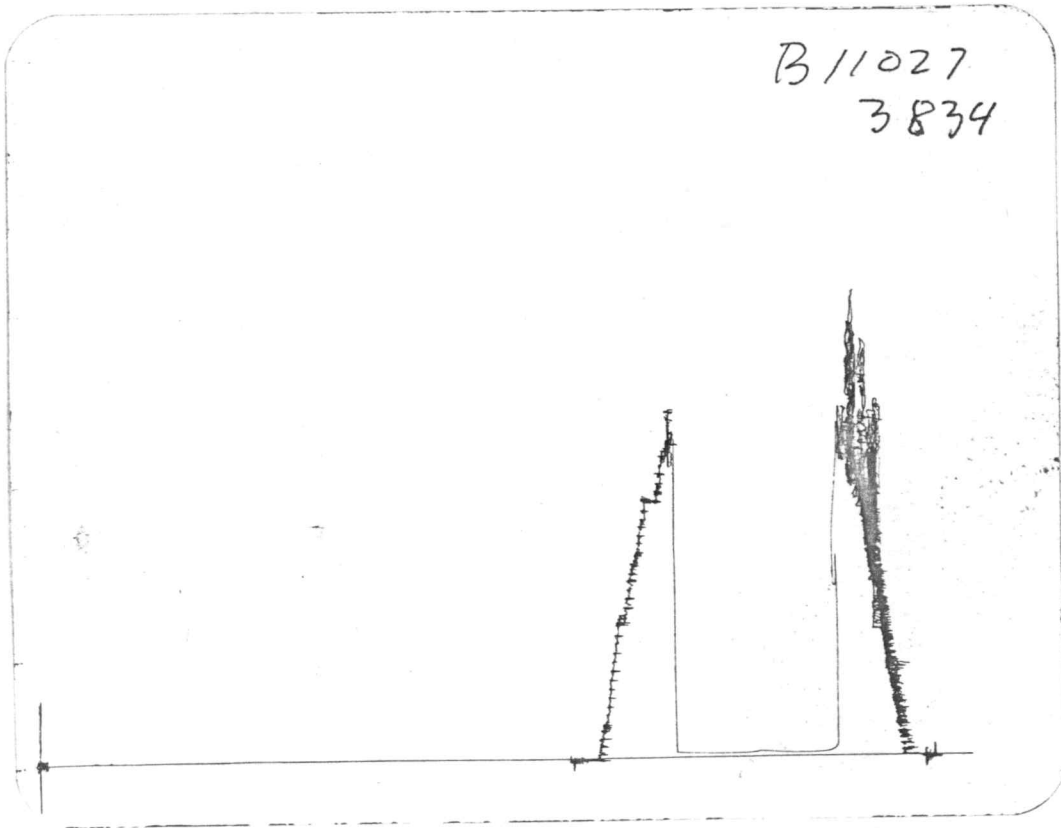
TOP

T 1055  
3834

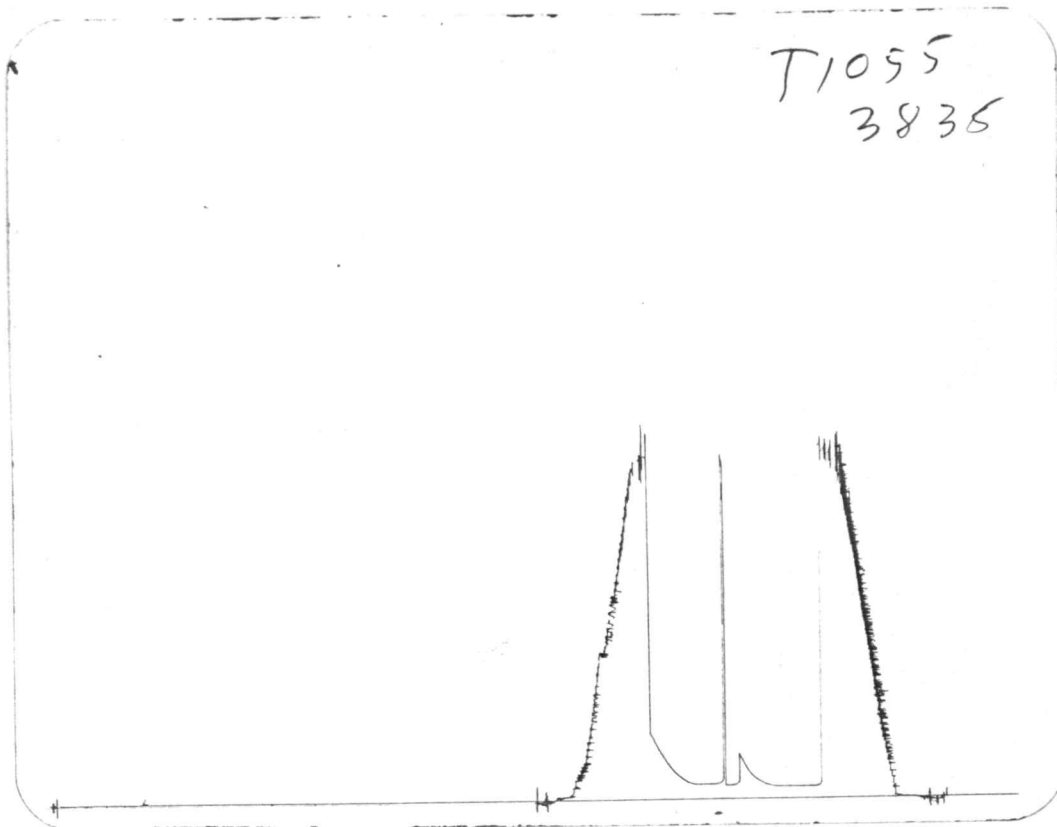


BOTTOM

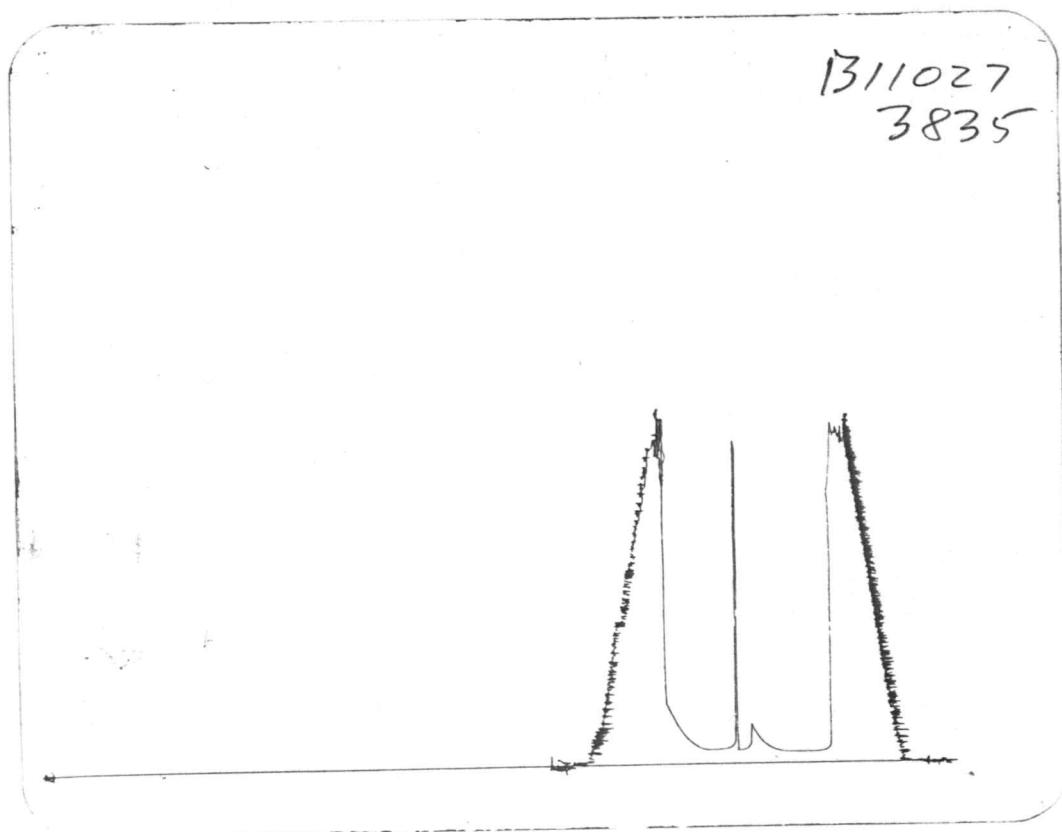
B 11027  
3834



TOP

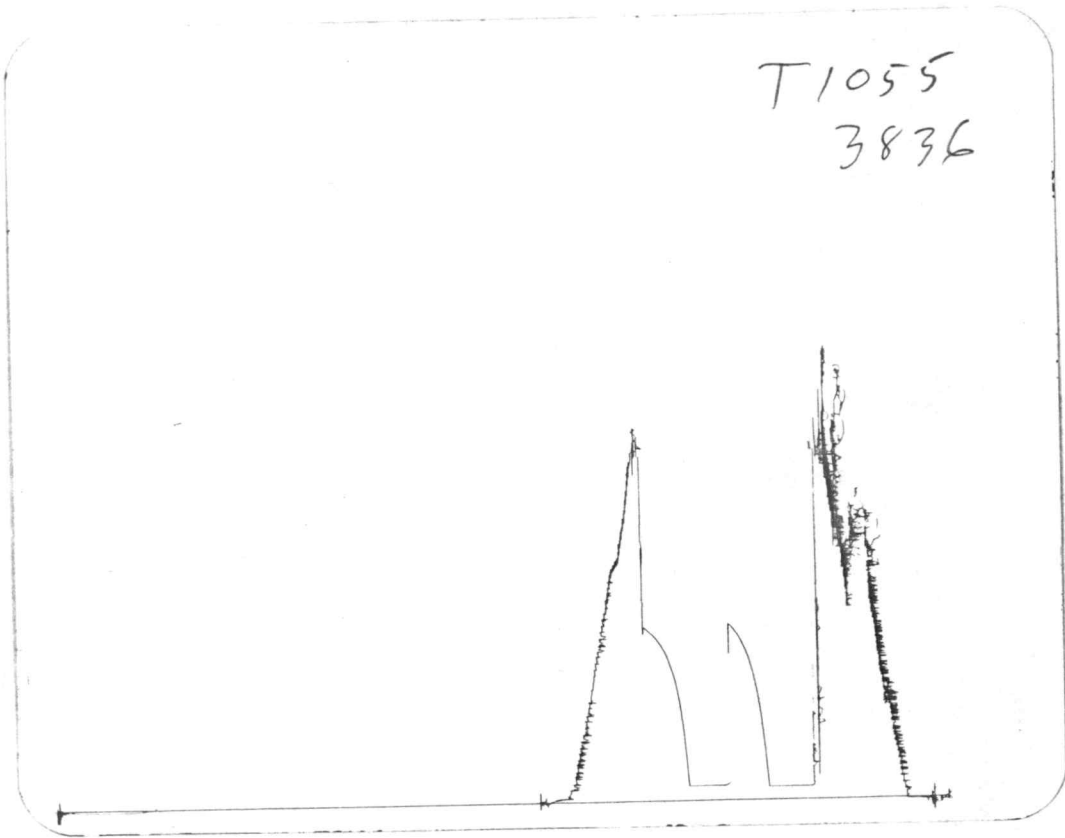


BOTTOM



TOP

T1055  
3836



BOTTOM

B11027  
3836

