

DRILL-STEM TEST DATA

Well Name	Keilman-Noll	Test No.	2
Well Number	1	Zone Tested	Ft Scott
Company	Palomino Pet Inc.	Date	8/4/03
Comp. Rep.	R Scheriber	Tester	Don Fabricius
Contractor	Pickrell Drly	Ticket No.	4101
Location	16-17-24	Elevation	

Recorder No. 3088 Clock Range 12 Recorder No. 4377 Clock Range 12  
 Depth 4262 Depth 4266  
 Initial Hydro Mud Press. 2129 Initial Hydro Mud Press. 2127  
 Initial Shut-in Press. 624 Initial Shut-in Press. 622  
 Initial Flow Press. 58-58 Initial Flow Press. 58-58  
 Final Flow Press. 58-58 Final Flow Press. 58-58  
 Final Shut-in Press. 412 Final Shut-in Press. 410  
 Final Hydro Mud Press. 2129 Final Hydro Mud Press. 2127  
 Temperature Tool Open Before I. S. I. 30 Mins.  
 Mud Weight 9.2 Viscosity 51.0 Initial Shut-in 30 Mins.  
 Fluid Loss 9.6 Flow Period 30 Mins.  
 Interval Tested 4213-70 Final Shut-in 30 Mins.  
 Top Packer Depth 4208 Surface Choke Size 1  
 Bottom Packer Depth 4215 Bottom Choke Size 3/4  
 Total Depth 4270 Main Hole Size 7 7/8  
 Drill Pipe Size 4 1/2 XH Wt. 16.60 Rubber Size 6 3/4  
 Drill Collar I. D. 2 1/4 Ft. Run 90

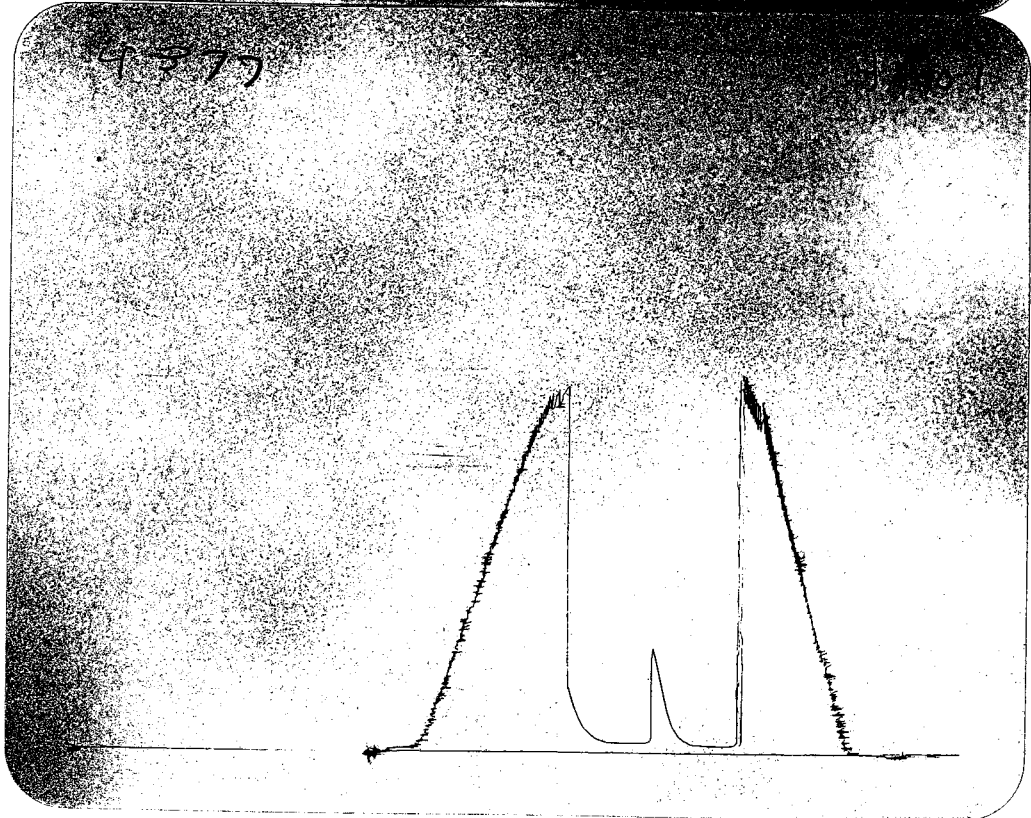
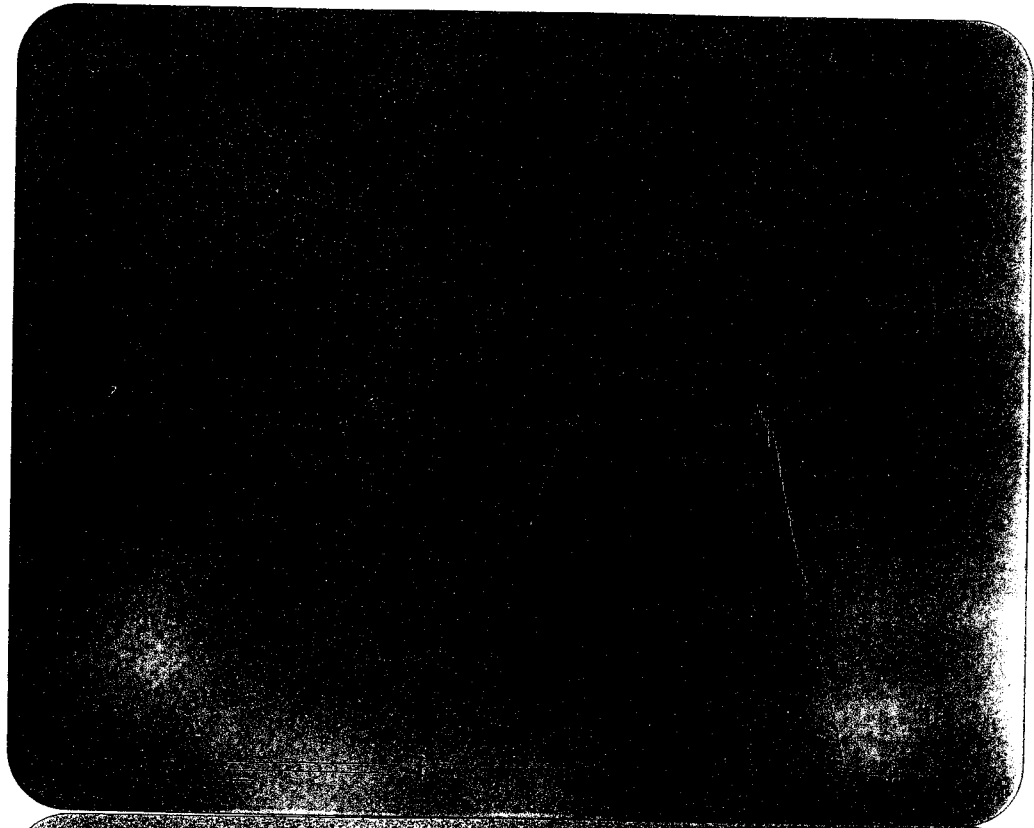
Recovery—Total Feet \_\_\_\_\_  
 Recovered 30 Feet Of Gas in pipe  
 Recovered 30 Feet Of Very slightly oil cut mud  
 Recovered \_\_\_\_\_ Feet Of \_\_\_\_\_  
 Recovered \_\_\_\_\_ Feet Of \_\_\_\_\_

Remarks  
 Weak blow thru-test

**THIS ORDER MUST BE SIGNED BEFORE WORK IS COMMENCED. CONDITIONS:** It is expressly understood and agreed that the above described work shall be done under the exclusive control, direction and supervision of the owner or contractor. As a part of the consideration for this agreement, it is expressly understood and agreed that Arrow Testing Company shall not be responsible for damages or losses of any kind whatsoever occasioned by or incident to the use of the above described Tools, whether run or operated by customer, or by anyone employed directly or indirectly by Arrow Testing Company, nor whether resulting from the acts or omissions of Arrow Testing Company, or any of its agents, servants or employees in any way connected with or related to the use of such Tools.

It is expressly understood and agreed that Arrow Testing Company, shall not be bound by any agreement, not herein contained, and no agent or representative connected with or employed by Arrow Testing Company has authority to alter or extend the terms of this agreement. I have read and understand the terms of this agreement and represent that I am authorized to sign the same as agent of customer.

ORIGINAL



DRILL-STEM TEST DATA

Well Name	Keilman-Noll	Test No.	3
Well Number	1	Zone Tested	Miss
Company	Palomino Pet Inc.	Date	8/5/03
Comp. Rep.	R Scheriber	Tester	Don Fabricius
Contractor	Pickrell Drly	Ticket No.	4102
Location	16-17-24	Elevation	

RECEIVED  
OCT 09 2003  
KCC WICHITA

Recorder No. 3088 Clock Range 12 Recorder No. 4377 Clock Range 12  
Depth 4360 Depth 4364  
Initial Hydro Mud Press. 2095 Initial Hydro Mud Press. 2093  
Initial Shut-in Press. 1128 Initial Shut-in Press. 1123  
Initial Flow Press. 94-141 Initial Flow Press. 93-140  
Final Flow Press. 196-199 Final Flow Press. 176-198  
Final Shut-in Press. 1071 Final Shut-in Press. 1066  
Final Hydro Mud Press. 2095 Final Hydro Mud Press. 2093  
Temperature \_\_\_\_\_ Tool Open Before I. S. I. 30 Mins.  
Mud Weight 9.2 Viscosity 49.0 Initial Shut-in 30 Mins.  
Fluid Loss 8.8 Flow Period 30 Mins.  
Interval Tested 4284-4368 Final Shut-in 30 Mins.  
Top Packer Depth 4279 Surface Choke Size 1  
Bottom Packer Depth 4284 Bottom Choke Size 3/4  
Total Depth 4368 Main Hole Size 7 7/8  
Drill Pipe Size 4 1/2 XH Wt. 16.60 Rubber Size 6 3/4  
Drill Collar I. D. 2 1/4 Ft. Run 90

Recovery—Total Feet \_\_\_\_\_  
Recovered 240 Feet Of Muddy Oil  
Recovered 120 Feet Of Slightly oil cut mud  
Recovered 60 Feet Of Oil specks watery mud  
Recovered 60 Feet Of Muddy water

Remarks  
Weak building to strong blow thru-test

THIS ORDER MUST BE SIGNED BEFORE WORK IS COMMENCED. CONDITIONS: It is expressly understood and agreed that the above described work shall be done under the exclusive control, direction and supervision of the owner or contractor. As a part of the consideration for this agreement, it is expressly understood and agreed that Arrow Testing Company shall not be responsible for damages or losses of any kind whatsoever occasioned by or incident to the use of the above described Tools, whether run or operated by customer, or by anyone employed directly or indirectly by Arrow Testing Company, nor whether resulting from the acts or omissions of Arrow Testing Company, or any of its agents, servants or employees in any way connected with or related to the use of such Tools.  
It is expressly understood and agreed that Arrow Testing Company, shall not be bound by any agreement, not herein contained, and no agent or representative connected with or employed by Arrow Testing Company has authority to alter or extend the terms of this agreement. I have read and understand the terms of this agreement and represent that I am authorized to sign the same as agent of customer.

ORIGINAL

