

DRILL-STEM TEST DATA

Well Name <u>Tilley</u>	Test No. <u>1</u>
Well Number <u>5</u>	Zone Tested <u>Fort Scott</u>
Company <u>Palomino Petroleum Inc.</u>	Date <u>4/3/95</u>
Comp. Rep. <u>R Patton</u>	Tester <u>Don Fabricius</u>
Contractor <u>Pickrell Drlg</u>	Ticket No. <u>3194</u>
Location <u>8-17-24</u>	Elevation _____

Recorder No. 3088 Clock Range 12 Recorder No. 4377 Clock Range 12

Depth 4362 Depth 4366

Initial Hydro Mud Press. 2220 Initial Hydro Mud Press. 2220

Initial Shut-in Press. 129 Initial Shut-in Press. 129

Initial Flow Press. 35-35 Initial Flow Press. 35-35

Final Flow Press. 47-47 Final Flow Press. 46-46

Final Shut-in Press. 117 Final Shut-in Press. 117

Final Hydro Mud Press. 2208 Final Hydro Mud Press. 2208

Temperature _____ Tool Open Before I. S. I. 30 Mins.

Mud Weight 9.4 Viscosity 47 Initial Shut-in 30 Mins.

Fluid Loss 10.4 Flow Period 30 Mins.

Interval Tested 4320-70 Final Shut-in 30 Mins.

Top Packer Depth 4315 Surface Choke Size 1

Bottom Packer Depth 4320 Bottom Choke Size 3/4

Total Depth 4370 Main Hole Size 7 7/8

Drill Pipe Size 4 1/2 X H Wt. 16.60 Rubber Size 6 3/4

Drill Collar I. D. 2 1/4 Ft. Run 150

Recovery—Total Feet _____

Recovered 30 Feet Of Very Slightly oil cut mud

Recovered _____ Feet Of _____

Recovered _____ Feet Of _____

Recovered _____ Feet Of _____

Remarks
Very weak blow dead in 27 min on initial flow
final flow very weak blow dead in 22 min

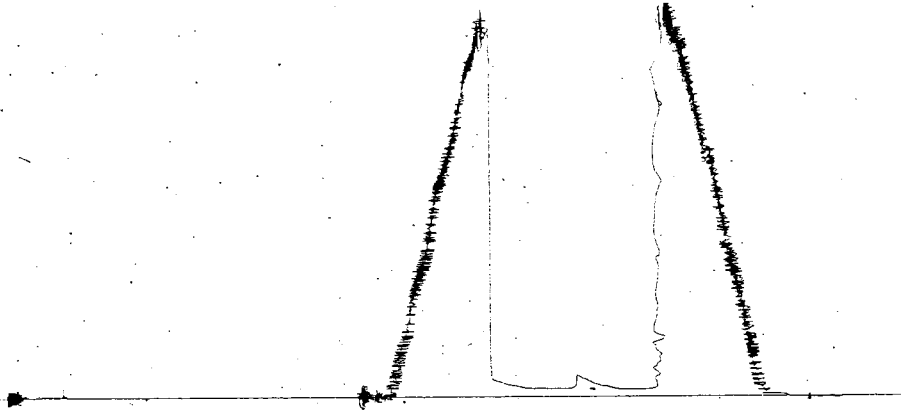
THIS ORDER MUST BE SIGNED BEFORE WORK IS COMMENCED. CONDITIONS: It is expressly understood and agreed that the above described work shall be done under the exclusive control, direction and supervision of the owner or contractor. As a part of the consideration for this agreement, it is expressly understood and agreed that Arrow Testing Company shall not be responsible for damages or losses of any kind whatsoever occasioned by or incident to the use of the above described Tools, whether run or operated by customer, or by anyone employed directly or indirectly by Arrow Testing Company, nor whether resulting from the acts or omissions of Arrow Testing Company, or any of its agents, servants or employees in any way connected with or related to the use of such Tools.

It is expressly understood and agreed that Arrow Testing Company, shall not be bound by any agreement, not herein contained, and no agent or representative connected with or employed by Arrow Testing Company has authority to alter or extend the terms of this agreement. I have read and understand the terms of this agreement and represent that I am authorized to sign the same as agent of customer.

By _____

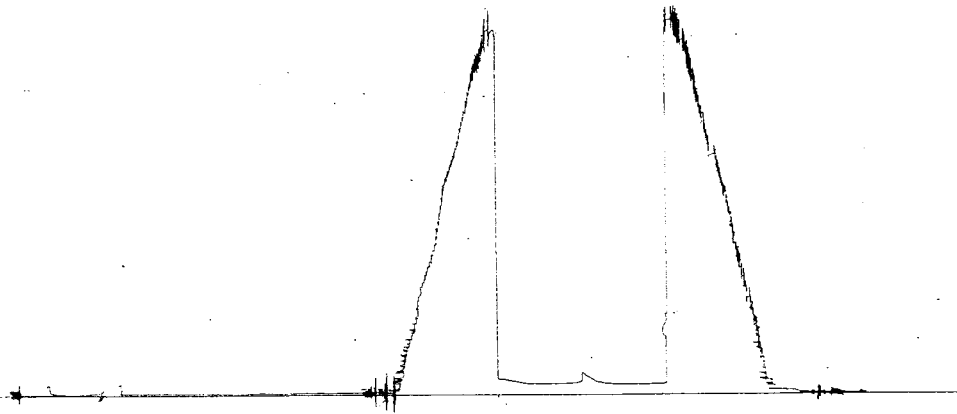
3802

3194



4377

3194



ARROW TESTING COMPANY

P. O. BOX 1051

GREAT BEND, KANSAS 67530

DRILL-STEM TEST DATA

Well Name <u>Tilley</u>	Test No. <u>2</u>
Well Number <u>5</u>	Zone Tested <u>Miss</u>
Company <u>Palomino Petroleum Inc.</u>	Date <u>4/4/95</u>
Comp. Rep. <u>R Patton</u>	Tester <u>Don Fabricius</u>
Contractor <u>Pickrell Drlg</u>	Ticket No. <u>3195</u>
Location <u>8-17-24</u>	Elevation _____

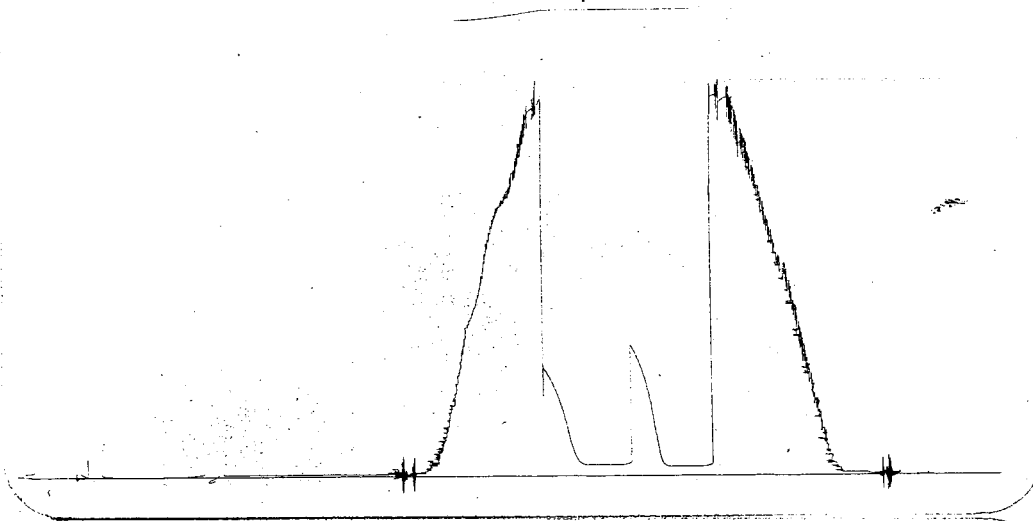
Recorder No. 3088 Clock Range 12 Recorder No. 4377 Clock Range 12
 Depth 4437 Depth 4441
 Initial Hydro Mud Press. 2242 Initial Hydro Mud Press. 2242
 Initial Shut-in Press. 789 Initial Shut-in Press. 786
 Initial Flow Press. 47-47 Initial Flow Press. 46-46
 Final Flow Press. 58-58 Final Flow Press. 58-58
 Final Shut-in Press. 636 Final Shut-in Press. 633
 Final Hydro Mud Press. 2242 Final Hydro Mud Press. _____
 Temperature _____ Tool Open Before I. S. I. 30 Mins.
 Mud Weight 9.4 Viscosity 47 Initial Shut-in 30 Mins.
 Fluid Loss 10.4 Flow Period 30 Mins.
 Interval Tested 4405-45 Final Shut-in 30 Mins.
 Top Packer Depth 4400 Surface Choke Size 1
 Bottom Packer Depth 4405 Bottom Choke Size 3/4
 Total Depth 4445 Main Hole Size 7 7/8
 Drill Pipe Size 4 1/2 X H Wt. 16.60 Rubber Size 6 3/4
 Drill Collar I. D. 2 1/4 Ft. Run 150
 Recovery—Total Feet _____
 Recovered 20 Feet Of Very slightly oil cut mud
 Recovered _____ Feet Of _____
 Recovered _____ Feet Of _____
 Recovered _____ Feet Of _____
 Remarks
Very weak blow dead in 22 min

THIS ORDER MUST BE SIGNED BEFORE WORK IS COMMENCED. CONDITIONS: It is expressly understood and agreed that the above described work shall be done under the exclusive control, direction and supervision of the owner or contractor. As a part of the consideration for this agreement, it is expressly understood and agreed that Arrow Testing Company shall not be responsible for damages or losses of any kind whatsoever occasioned by or incident to the use of the above described Tools, whether run or operated by customer, or by anyone employed directly or indirectly by Arrow Testing Company, nor whether resulting from the acts or omissions of Arrow Testing Company, or any of its agents, servants or employees in any way connected with or related to the use of such Tools.

It is expressly understood and agreed that Arrow Testing Company, shall not be bound by any agreement, not herein contained, and no agent or representative connected with or employed by Arrow Testing Company has authority to alter or extend the terms of this agreement. I have read and understand the terms of this agreement and represent that I am authorized to sign the same as agent of customer.

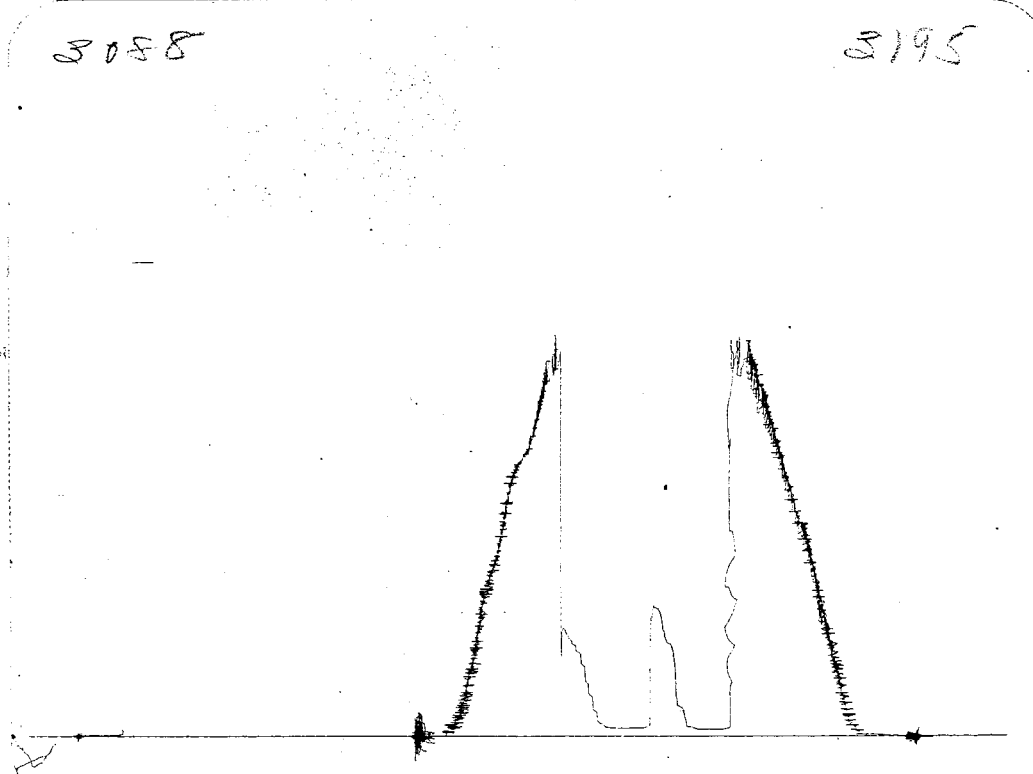
4377

3795



3058

3795



DRILL-STEM TEST DATA

Well Name <u>Tilley</u>	Test No. <u>3</u>
Well Number <u>5</u>	Zone Tested <u>Miss</u>
Company <u>Palomino Petroleum Inc.</u>	Date <u>4/4/95</u>
Comp. Rep. <u>R Patton</u>	Tester <u>Don Fabricius</u>
Contractor <u>Pickrell Drlg</u>	Ticket No. <u>3195</u>
Location <u>8-17-24</u>	Elevation _____

Recorder No. 3088 Clock Range 12 Recorder No. 4377 Clock Range 12
Depth 4443 Depth 4447
Initial Hydro Mud Press. 2254 Initial Hydro Mud Press. 2253
Initial Shut-in Press. 1174 Initial Shut-in Press. 1169
Initial Flow Press. 35-47 Initial Flow Press. 35-46
Final Flow Press. 58-70 Final Flow Press. 58-70
Final Shut-in Press. 1117 Final Shut-in Press. 1112
Final Hydro Mud Press. 2254 Final Hydro Mud Press. 2253
Temperature _____ Tool Open Before I. S. I. 30 Mins.
Mud Weight 9.4 Viscosity 52 Initial Shut-in 45 Mins.
Fluid Loss 12 Flow Period 60 Mins.
Interval Tested 4440-51 Final Shut-in 75 Mins.
Top Packer Depth 4435 Surface Choke Size 1
Bottom Packer Depth 4440 Bottom Choke Size 3/4
Total Depth 4451 Main Hole Size 7 7/8
Drill Pipe Size 4 1/2 X H Wt. 16.60 Rubber Size 6 3/4
Drill Collar I. D. 2 1/4 Ft. Run 180
Recovery—Total Feet _____
Recovered 120 Feet Of Clean oil
Recovered 60 Feet Of Very slightly oil cut mud
Recovered _____ Feet Of _____
Recovered _____ Feet Of _____
Remarks
Weak building to fair blow thru-test

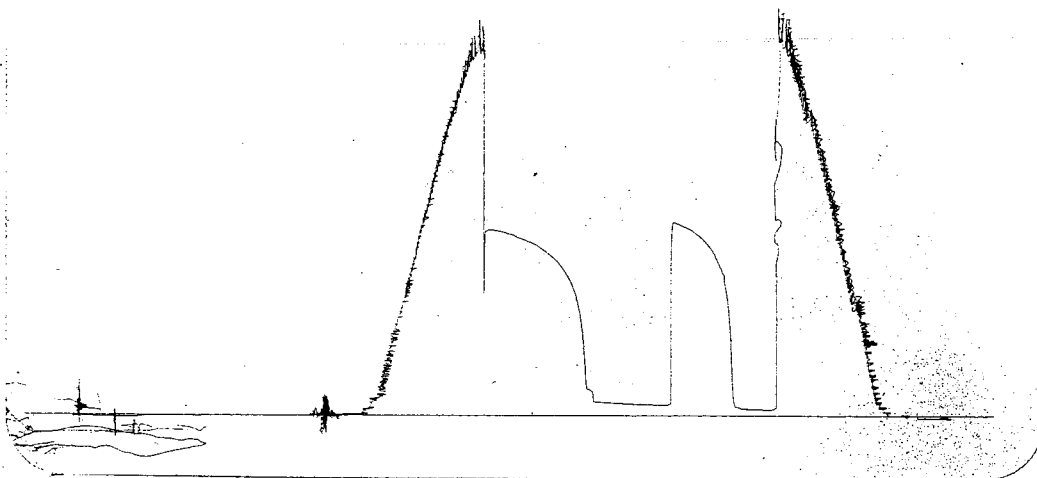
THIS ORDER MUST BE SIGNED BEFORE WORK IS COMMENCED. CONDITIONS: It is expressly understood and agreed that the above described work shall be done under the exclusive control, direction and supervision of the owner or contractor. As a part of the consideration for this agreement, it is expressly understood and agreed that Arrow Testing Company shall not be responsible for damages or losses of any kind whatsoever occasioned by or incident to the use of the above described Tools, whether run or operated by customer, or by anyone employed directly or indirectly by Arrow Testing Company, nor whether resulting from the acts or omissions of Arrow Testing Company, or any of its agents, servants or employees in any way connected with or related to the use of such Tools.

It is expressly understood and agreed that Arrow Testing Company, shall not be bound by any agreement, not herein contained, and no agent or representative connected with or employed by Arrow Testing Company has authority to alter or extend the terms of this agreement. I have read and understand the terms of this agreement and represent that I am authorized to sign the same as agent of customer.

By _____

2058

3196



4377

3196

