



TRILOBITE
TESTING, INC.

DRILL STEM TEST REPORT

Prepared For: **John O Farmer Inc**

P O Box 352
Russell KS 67665

ATTN: John O Farmer IV

1 17 25W Ness KS

Potter E-1

Start Date: 2006.05.02 @ 17:06:58

End Date: 2006.05.03 @ 00:53:57

Job Ticket #: 24282 DST #: 1

Trilobite Testing, Inc

PO Box 362 Hays, KS 67601

ph: 785-625-4778 fax: 785-625-5620

John O Farmer Inc

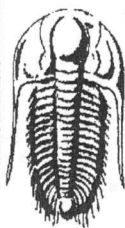
Potter E-1

1 17 25W Ness KS

DST # 1

Ft Scott

2006.05.02



TRILOBITE TESTING, INC.

DRILL STEM TEST REPORT

John O Farmer Inc

Potter E-1

P O Box 352
Russell KS 67665

1 17 25W Ness KS

ATTN: John O Farmer IV

Job Ticket: 24282

DST#: 1

Test Start: 2006.05.02 @ 17:06:58

GENERAL INFORMATION:

Formation: **Ft Scott**

Deviated: **No** Whipstock: **ft (KB)**

Time Tool Opened: 19:38:27

Time Test Ended: 00:53:57

Test Type: Conventional Bottom Hole

Tester: Ray Schwager

Unit No: 28

Interval: **4309.00 ft (KB) To 4350.00 ft (KB) (TVD)**

Total Depth: 4350.00 ft (KB) (TVD)

Hole Diameter: 6.75 inches Hole Condition: Fair

Reference Elevations: 2435.00 ft (KB)

2427.00 ft (CF)

KB to GR/CF: 8.00 ft

Serial #: 8167

Inside

Press@RunDepth: 36.34 psig @ 4320.01 ft (KB)

Start Date: 2006.05.02

End Date:

2006.05.03

Start Time: 17:06:58

End Time:

00:53:57

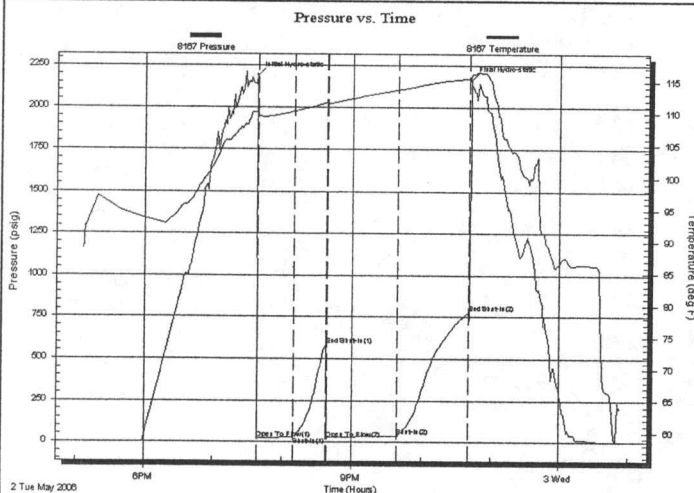
Capacity: 7000.00 psig

Last Calib.: 2006.05.03

Time On Btm: 2006.05.02 @ 19:37:57

Time Off Btm: 2006.05.02 @ 22:41:57

TEST COMMENT: IFP Wk bl thru-out 1/2" to 2 1/2" bl
FFP Wk to a fr bl 2" to 5" bl
Times 30 30 60 60
No bl on shut-in



PRESSURE SUMMARY

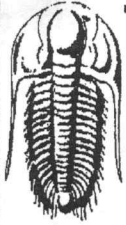
Time (Min.)	Pressure (psig)	Temp (deg F)	Annotation
0	2190.42	110.20	Initial Hydro-static
1	17.47	109.46	Open To Flow (1)
32	27.92	110.28	Shut-In(1)
60	583.51	111.61	End Shut-In(1)
61	20.64	111.49	Open To Flow (2)
121	36.34	113.62	Shut-In(2)
183	777.78	115.45	End Shut-In(2)
184	2164.25	115.94	Final Hydro-static

Recovery

Length (ft)	Description	Volume (bbl)
60.00	GMO 25%G 61%O 14%M	0.57
0.00	360' GIP	0.00

Gas Rates

Choke (inches)	Pressure (psig)	Gas Rate (Mcf/d)



**TRILOBITE
TESTING, INC.**

DRILL STEM TEST REPORT

TOOL DIAGRAM

John O Farmer Inc

Potter E-1

P O Box 352
Russell KS 67665

1 17 25W Ness KS

Job Ticket: 24282

DST#: 1

ATTN: John O Farmer IV

Test Start: 2006.05.02 @ 17:06:58

Tool Information

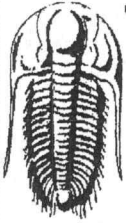
Drill Pipe:	Length: 4288.00 ft	Diameter: 3.80 inches	Volume: 60.15 bbl	Tool Weight: 2200.00 lb
Heavy Wt. Pipe:	Length: 0.00 ft	Diameter: 0.00 inches	Volume: 0.00 bbl	Weight set on Packer: 25000.00 lb
Drill Collar:	Length: 30.00 ft	Diameter: 2.25 inches	Volume: 0.15 bbl	Weight to Pull Loose: 65000.00 lb
			<u>Total Volume: 60.30 bbl</u>	Tool Chased 0.00 ft
Drill Pipe Above KB:	30.00 ft			String Weight: Initial 46000.00 lb
Depth to Top Packer:	4309.00 ft			Final 46000.00 lb
Depth to Bottom Packer:	ft			
Interval between Packers:	41.02 ft			
Tool Length:	62.02 ft			
Number of Packers:	2	Diameter: 6.75 inches		

Tool Comments:

Tool Description

Tool Description	Length (ft)	Serial No.	Position	Depth (ft)	Accum. Lengths
Change Over Sub	1.00			4289.00	
Shut In Tool	5.00			4294.00	
Hydraulic tool	5.00			4299.00	
Packer	5.00			4304.00	21.00 Bottom Of Top Packer
Packer	5.00			4309.00	
Stubb	1.00			4310.00	
Perforations	10.00			4320.00	
Recorder	0.01	8167	Inside	4320.01	
Perforations	27.00			4347.01	
Recorder	0.01	13534	Outside	4347.02	
Bullnose	3.00			4350.02	41.02 Bottom Packers & Anchor

Total Tool Length: 62.02



**TRILOBITE
TESTING, INC**

DRILL STEM TEST REPORT

FLUID SUMMARY

John O Farmer Inc

Potter E-1

P O Box 352
Russell KS 67665

1-17-25W Ness KS

ATTN: John O Farmer IV

Job Ticket: 24282

DST#: 1

Test Start: 2006.05.02 @ 17:06:58

Mud and Cushion Information

Mud Type: Gel Chem

Cushion Type:

Oil API:

deg API

Mud Weight: 10.00 lb/gal

Cushion Length:

ft

Water Salinity:

ppm

Viscosity: 60.00 sec/qt

Cushion Volume:

bbl

Water Loss: 7.97 in³

Gas Cushion Type:

Resistivity: ohm.m

Gas Cushion Pressure:

psig

Salinity: 4000.00 ppm

Filter Cake: 2.00 inches

Recovery Information

Recovery Table

Length ft	Description	Volume bbl
60.00	GMO 25%G 61%O 14%M	0.568
0.00	360' GIP	0.000

Total Length: 60.00 ft Total Volume: 0.568 bbl

Num Fluid Samples: 0

Num Gas Bombs: 0

Serial #:

Laboratory Name:

Laboratory Location:

Recovery Comments:

Serial #: 8167

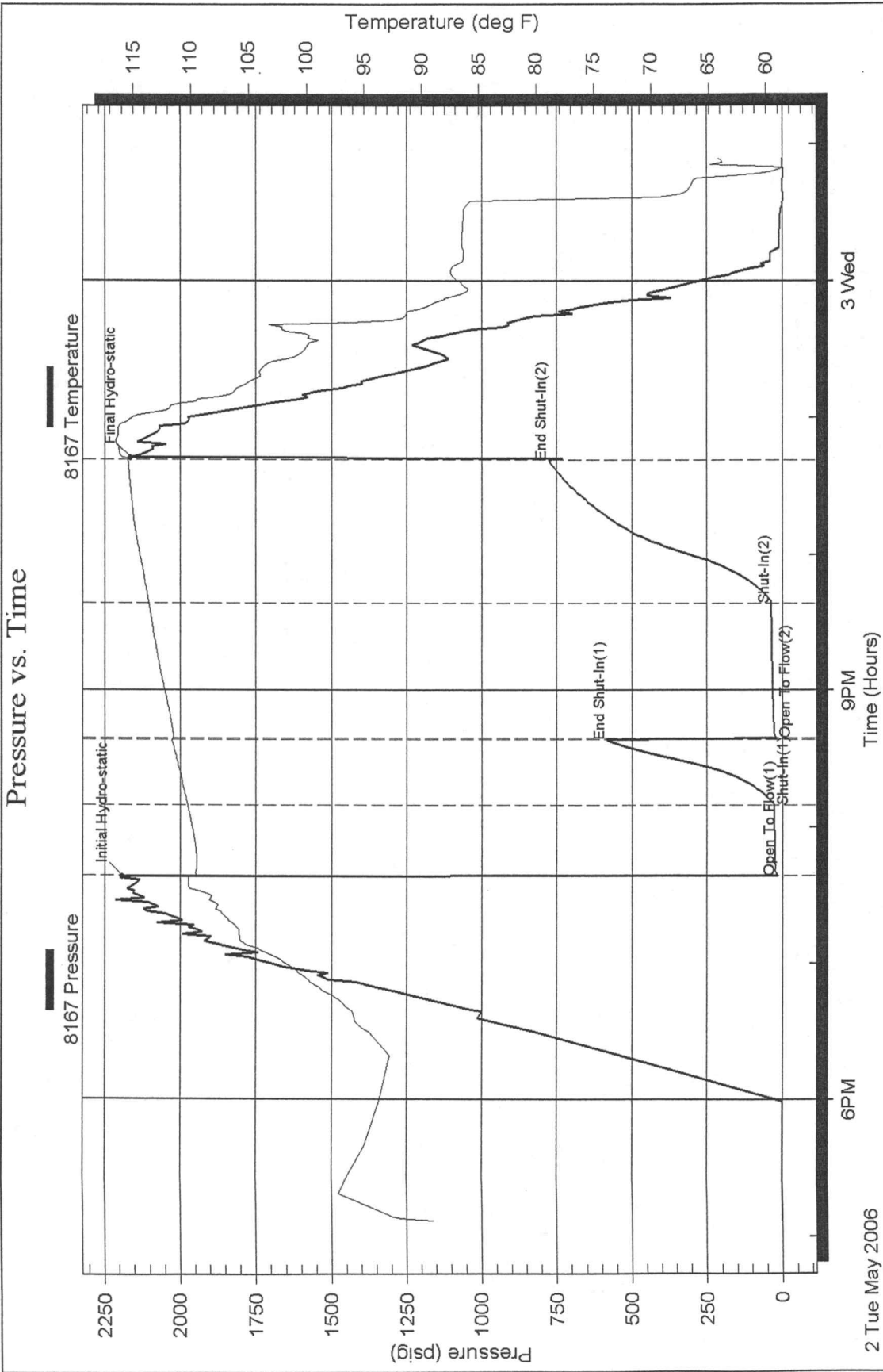
Inside

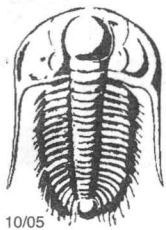
John O Farmer Inc

1 17 25W Ness KS

DST Test Number: 1

Pressure vs. Time





TRILOBITE TESTING INC.

P.O. Box 362 • Hays, Kansas 67601

6710

No 24282

Test Ticket

Well Name & No. POTTER E-1 Test No. 1 Date 5-2-06
 Company John O. Farmer Inc Zone Tested FT SCOTT
 Address P.O. Box 352 Russell, Ks 67665 Elevation 2435 KB 2427 GL
 Co. Rep / Geo. Randy Killian Rig DISCOVERY 193
 Location: Sec. 1 Twp. 17^s Rge. 25^w Co. Ness State Ks
 Comment: _____ Release date / time: _____

Interval Tested 4309-4350 Initial Str Wt./Lbs. 46000 Unseated Str Wt/Lbs. 46000
 Anchor Length 41 Wt. Set Lbs. 25000 Wt. Pulled Loose/Lbs. 65000
 Top Packer Depth 4304 Tool Weight 2200
 Bottom Packer Depth 4309 Hole Size 7 7/8" _____ Rubber Size 6 3/4" _____
 Total Depth 4350 Wt. Pipe Run _____ Drill Collar Run 30
 Mud Wt. 9.5 LCM 1/2# Vis. 60 WL 8 Drill Pipe Size 4 1/2 XH Ft. Run 4288
 Blow Description IFP - WEAK Blow thru-out 1/2" To 2 1/2" Blow
FFP - WEAK TO A FAIR Blow 2" To 5" Blow
NO Blow on shut-in

Recovery - Total Feet 60 GIP 360 Ft. in DC 30 Ft. in DP 30
 Rec. 60 Feet of GMD 25 %gas 61 %oil %water 14 %mud
 Rec. _____ Feet of _____ %gas %oil %water %mud
 Rec. _____ Feet of _____ %gas %oil %water %mud
 Rec. _____ Feet of _____ %gas %oil %water %mud
 Rec. _____ Feet of _____ %gas %oil %water %mud
 BHT _____ °F Gravity _____ °API D @ _____ °F Corrected Gravity _____ °API
 RW _____ @ _____ °F Chlorides _____ ppm Recovery _____ Chlorides 4000 ppm System

	AK-1	Alpine	Recorder No.	Test
(A) Initial Hydrostatic Mud		<u>2137</u> PSI	<u>8167</u>	<u>1100.00</u>
(B) First Initial Flow Pressure		<u>17</u> PSI	(depth) <u>4320</u>	Jars _____
(C) First Final Flow Pressure		<u>279</u> PSI	Recorder No. <u>13534</u>	Safety Jt. _____
(D) Initial Shut-In Pressure		<u>583</u> PSI	(depth) <u>4347</u>	Circ Sub _____
(E) Second Initial Flow Pressure		<u>20</u> PSI	Recorder No. _____	Sampler _____
(F) Second Final Flow Pressure		<u>36</u> PSI	(depth) _____	Straddle _____
(G) Final Shut-In Pressure		<u>777</u> PSI	Initial Opening <u>30</u>	Ext. Packer _____
(Q) Final Hydrostatic Mud		<u>2086</u> PSI	Initial Shut-In <u>30</u>	Shale Packer _____

TRILOBITE TESTING INC. SHALL NOT BE LIABLE FOR DAMAGED OF ANY KIND OF THE PROPERTY OR PERSONNEL OF THE ONE FOR WHOM A TEST IS MADE, OR FOR ANY LOSS SUFFERED OR SUSTAINED, DIRECTLY OR INDIRECTLY, THROUGH THE USE OF ITS EQUIPMENT, OR ITS STATEMENTS OR OPINION CONCERNING THE RESULTS OF ANY TEST. TOOLS LOST OR DAMAGED IN THE HOLE SHALL BE PAID FOR AT COST BY THE PARTY FOR WHOM THE TEST IS MADE.

Approved By _____

Our Representative Ray Schwager Thank you

Final Flow 60
 Final Shut-In 60
 T-On Location 1600
 T-Started 1706
 T-Open 1940
 T-Pulled 2240
 T-Out 0053
 Ruined Packer _____
 Mileage 120 RT 150.00
 Sub Total: 1250
 Std. By _____
 Acc. Chg: _____
 Other: _____
 Total: _____

CHART PAGE

This is a photocopy of the actual AK-1 recorder chart.

13534
OSTH 1
J.O. FAEMER

