

Company Palomino Petroleum, Inc.
Address 4924 SE 84th Street
CSZ Newton, KS 67114
Attn. Mike Kidwell

Lease Name Stutz Unit
Lease # 1
Legal Desc NW NW SW Job Ticket 3045
Section 7 Range 25W
Township 17S
County Ness State KS
Drilling Cont Southwind Drilling #1

Comments Wildcat

15-135-24832

GENERAL INFORMATION

Test # 1 Test Date 8/25/2008
Tester Jimmy Ricketts
Test Type Conventional Bottom Hole
Successful Test

Chokes 3/4 Hole Size 7 7/8
Top Recorder # w1022
Mid Recorder #
Bott Recorder # 11027

of Packers 2.0 Packer Size 6 3/4

Mileage 184 Approved By

Mud Type Gel Chem
Mud Weight 9.4 Viscosity 48.0
Filtrate 9.6 Chlorides 4500

Standby Time 0
Extra Equipmnt Jars & Safety Joint
Time on Site 8:40 AM
Tool Picked Up 9:30 AM
Tool Layed Dwn 4:00 PM

Drill Collar Len 0
Wght Pipe Len 0

Elevation 2566.00 Kelley Bushings 2576.00

Formation Marmaton
Interval Top 4205.0 Bottom 4306.0
Anchor Len Below 101.0 Between 0
Total Depth 4306.0

Start Date/Time 8/25/2008 9:19 AM
End Date/Time 8/25/2008 4:24 PM

Blow Type Weak blow building to strong blow 15 minutes into initial flow period. Strong blow throughout final flow period. Times: 30, 30, 30, 63.

7-175-25W

RECOVERY

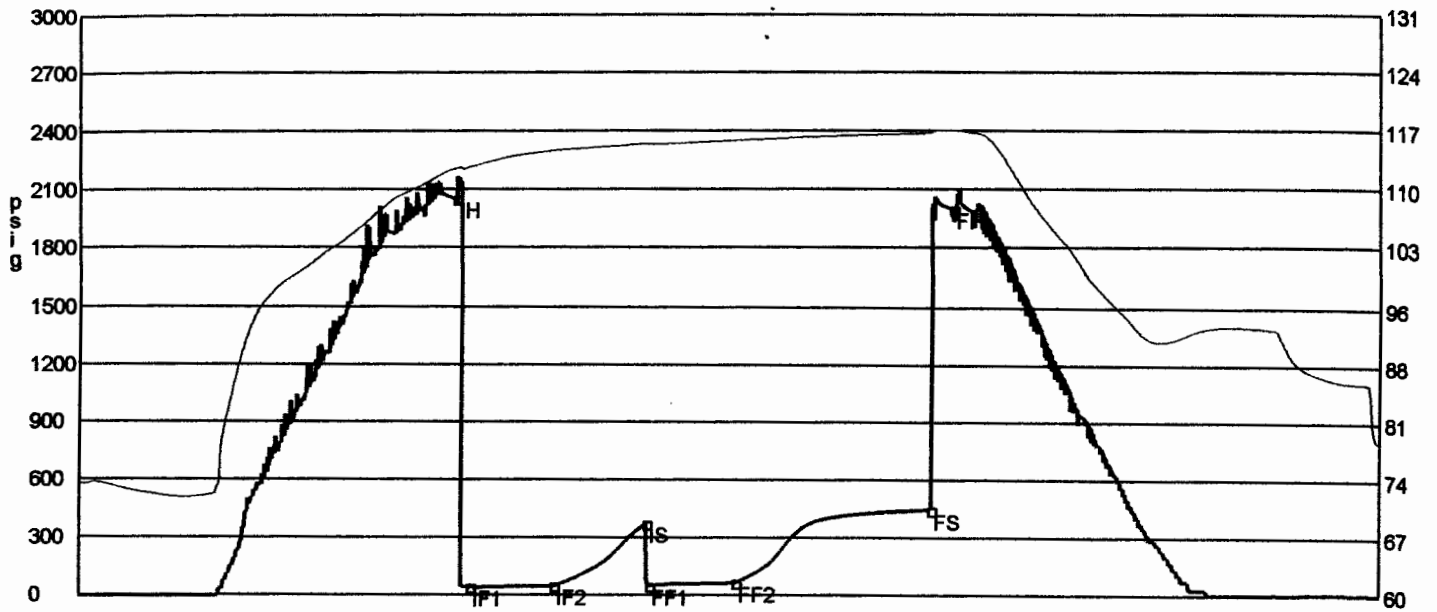
Feet	Description	Gas	Oil	Water	Mud
560	Gas in pipe	100% 560ft	0% 0ft	0% 0ft	0% 0ft
60	Heavy gas and oil cut mud	11% 6.6ft	17% 10.2ft	0% 0ft	72% 43.2ft

DST Fluids 0

RECEIVED
KANSAS CORPORATION COMMISSION

NOV 13 2008

CONSERVATION DIVISION
WICHITA, KS



	Date	Time	Pressure	Temp	
IH	8/25/2008 11:20:30 AM	2.025	2048.492	112.233	Initial Hydro-static
IF1	8/25/2008 11:25:30 AM	2.108333	39.966	112.44	Initial Flow (1)
IF2	8/25/2008 11:52:45 AM	2.5625	46.627	114.409	Initial Flow (2)
IS	8/25/2008 12:23:00 PM	3.066667	371.897	115.211	Initial Shut-In
FF1	8/25/2008 12:24:00 PM	3.083333	47.009	115.187	Final Flow (1)
FF2	8/25/2008 12:52:15 PM	3.554167	63.675	115.612	Final Flow (2)
FS	8/25/2008 1:56:00 PM	4.616667	444.586	116.507	Final Shut-In
FH	8/25/2008 2:03:00 PM	4.733333	1995.988	116.859	Final Hydro-static

GAS FLOWS

Min Into IFP Min Into FFP Gas Flows Pressure Choke

RECEIVED
KANSAS CORPORATION COMMISSION

NOV 13 2008

CONSERVATION DIVISION
WICHITA, KS

Company	Palomino Petroleum, Inc.	Lease Name	Stutz Unit	
Address	4924 SE 84th Street	Lease #	1	
CSZ	Newton, KS 67114	Legal Desc	NW NW SW	Job Ticket 3045
Attn.	Mike Kidwell	Section	7	Range 25W
		Township	17S	
		County	Ness	State KS
		Drilling Cont	Southwind Drilling #1	
Comments	Wildcat			

GENERAL INFORMATION

Test # 2	Test Date 8/26/2008	Chokes 3/4	Hole Size 7 7/8
Tester Jimmy Ricketts		Top Recorder # 11027	
Test Type Conventional Bottom Hole Successful Test		Mid Recorder #	
# of Packers 2.0	Packer Size 6 3/4	Bott Recorder # w1022	
Mud Type Gel Chem		Mileage 60	Approved By
Mud Weight 9.4	Viscosity 48.0	Standby Time 0	
Filtrate 9.6	Chlorides 4500	Extra Equipmnt Jars & Safety Joint	
Drill Collar Len 0		Time on Site 12:40 PM	
Wght Pipe Len 0		Tool Picked Up 1:30 PM	
		Tool Layed Dwn 8:30 PM	
Formation Mississippian		Elevation 2566.00	Kelley Bushings 2576.00
Interval Top 4468.0	Bottom 4505.0	Start Date/Time 8/26/2008 1:09 PM	
Anchor Len Below 37.0	Between 0	End Date/Time 8/26/2008 8:54 PM	
Total Depth 4505.0			
Blow Type Weak blow building to strong blow 16 minutes into initial flow period. 1/2 inch blow back during initial shut-in period. Weak blow building to strong blow 14 minutes into final flow period. 1 inch blow back during final shut-in period. Times 30, 30, 30, 30. API gravity was 37.			

RECOVERY

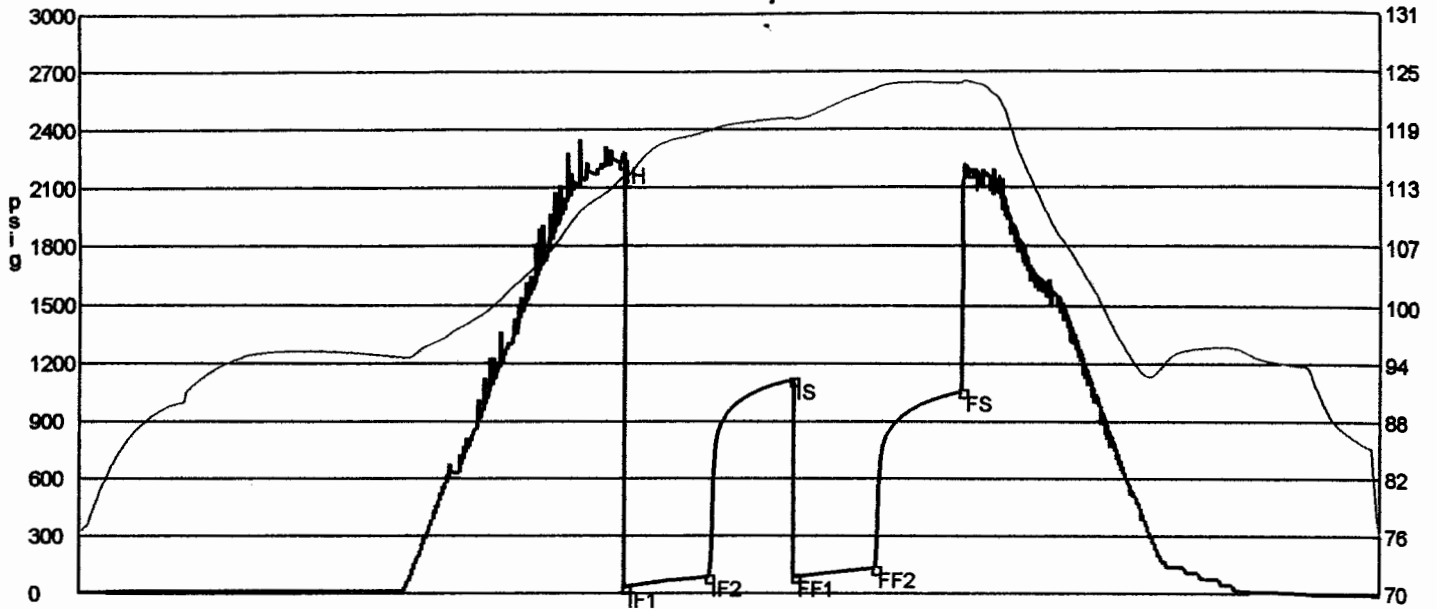
Feet	Description	Gas	Oil	Water	Mud
90	Gassy clean oil	0% 0ft	100% 90ft	0% 0ft	0% 0ft
200	Gassy heavy mud cut oil	22% 44ft	51% 102ft	0% 0ft	27% 54ft

DST Fluids **0**

RECEIVED
KANSAS CORPORATION COMMISSION

NOV 13 2008

CONSERVATION DIVISION
WICHITA KS



	Date	Time	Pressure	Temp	
IH	8/26/2008 4:21:30 PM	3.208333	2220.105	113.616	Initial Hydro-static
IF1	8/26/2008 4:22:45 PM	3.229167	26.577	113.638	Initial Flow (1)
IF2	8/26/2008 4:52:45 PM	3.729167	82.201	118.611	Initial Flow (2)
IS	8/26/2008 5:23:00 PM	4.233333	1112.182	120.016	Initial Shut-In
FF1	8/26/2008 5:23:45 PM	4.245833	84.967	119.875	Final Flow (1)
FF2	8/26/2008 5:52:30 PM	4.725	128.684	122.99	Final Flow (2)
FS	8/26/2008 6:23:30 PM	5.241667	1053.98	123.64	Final Shut-In
FH	8/26/2008 6:26:30 PM	5.291667	2179.425	123.758	Final Hydro-static

GAS FLOWS

Min Into IFP Min Into FFP Gas Flows Pressure Choke

RECEIVED
 KANSAS CORPORATION COMMISSION
NOV 13 2008
 CONSERVATION DIVISION
 WICHITA, KS