

15-135-24120

ARROW TESTING COMPANY
P. O. BOX 1051 GREAT BEND, KANSAS 67530

ORIGINAL
24-17s-26w

DRILL-STEM TEST DATA

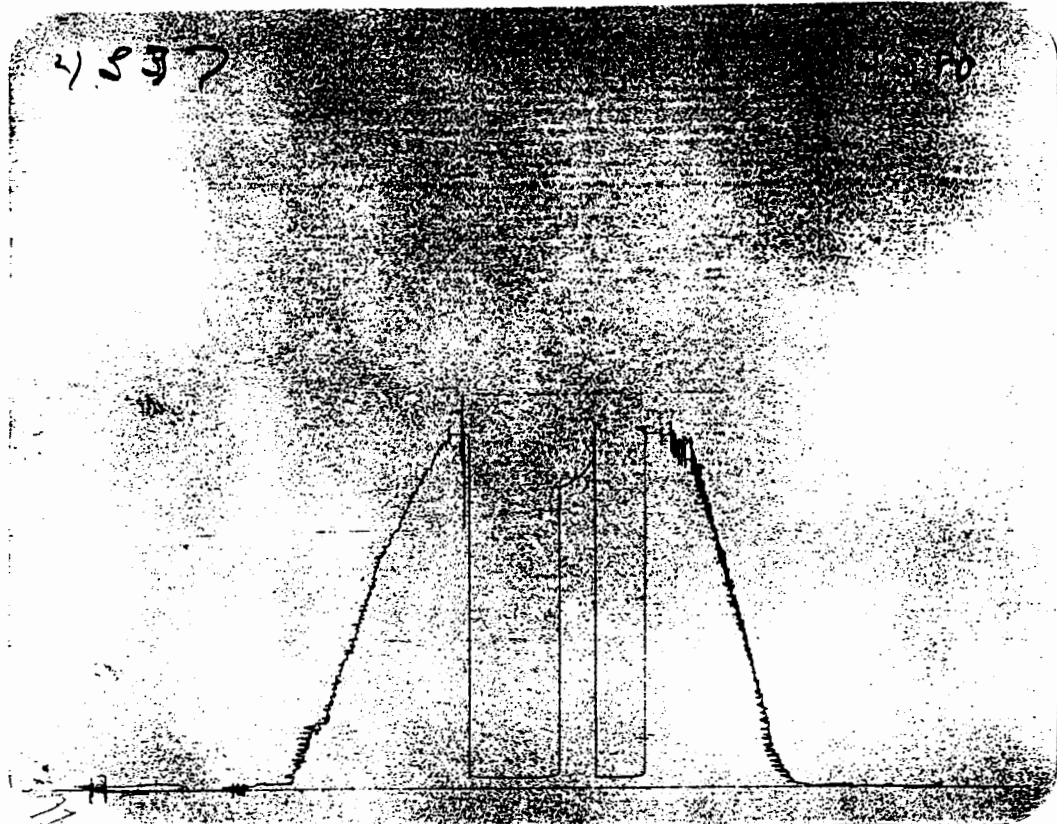
Well Name	Lee Norton	Test No.	1
Well Number	1	Zone Tested	Marm
Company	Palomino Petroleum Inc	Date	11/22/00
Comp. Rep.	J Thompson	Tester	Don Fabricius
Contractor	Pickrell Drlg	Ticket No.	3380
Location	24-17-26	Elevation	

Recorder No. 3088 Clock Range 12 Recorder No. 4377 Clock Range 12
 Depth 4213 Depth 4217
 Initial Hydro Mud Press. 2118 Initial Hydro Mud Press. 2117
 Initial Shut-in Press. 30 Initial Shut-in Press. 30
 Initial Flow Press. 30-30 Initial Flow Press. 30-30
 Final Flow Press. 30-30 Final Flow Press. 30-30
 Final Shut-in Press. 60 Final Shut-in Press. 60
 Final Hydro Mud Press. 2118 Final Hydro Mud Press. 2117
 Temperature _____ Tool Open Before I. S. I. 30 Mins.
 Mud Weight 9.4 Viscosity 45 Initial Shut-in 30 Mins.
 Fluid Loss 10.4 Flow Period 30 Mins.
 Interval Tested 4156-4221 Final Shut-in 30 Mins.
 Top Packer Depth 4151 Surface Choke Size 1
 Bottom Packer Depth 4156 Bottom Choke Size 3/4
 Total Depth 4221 Main Hole Size 7 7/8
 Drill Pipe Size 4 1/2 X H Wt. 16.60 Rubber Size 6 3/4
 Drill Collar I. D. _____ Ft. Run _____
 Recovery—Total Feet _____
 Recovered 5 Feet Of Mud
 Recovered _____ Feet Of _____
 Recovered _____ Feet Of _____
 Recovered _____ Feet Of _____
 Remarks
Very weak blow dead in 19 min
Flushed tool no help

THIS ORDER MUST BE SIGNED BEFORE WORK IS COMMENCED. CONDITIONS: It is expressly understood and agreed that the above described work shall be done under the exclusive control, direction and supervision of the owner or contractor. As a part of the consideration for this agreement, it is expressly understood and agreed that Arrow Testing Company shall not be responsible for damages or losses of any kind whatsoever occasioned by or incident to the use of the above described Tools, whether run or operated by customer, or by anyone employed directly or indirectly by Arrow Testing Company, nor whether resulting from the acts or omissions of Arrow Testing Company, or any of its agents, servants or employees in any way connected with or related to the use of such Tools.

It is expressly understood and agreed that Arrow Testing Company, shall not be bound by any agreement, not herein contained, and no agent or representative connected with or employed by Arrow Testing Company has authority to alter or extend the terms of this agreement. I have read and understand the terms of this agreement and represent that I am authorized to sign the same as agent of customer.

ORIGINAL



ORIGINAL

ARROW TESTING COMPANY
P. O. BOX 1051 GREAT BEND, KANSAS 67530

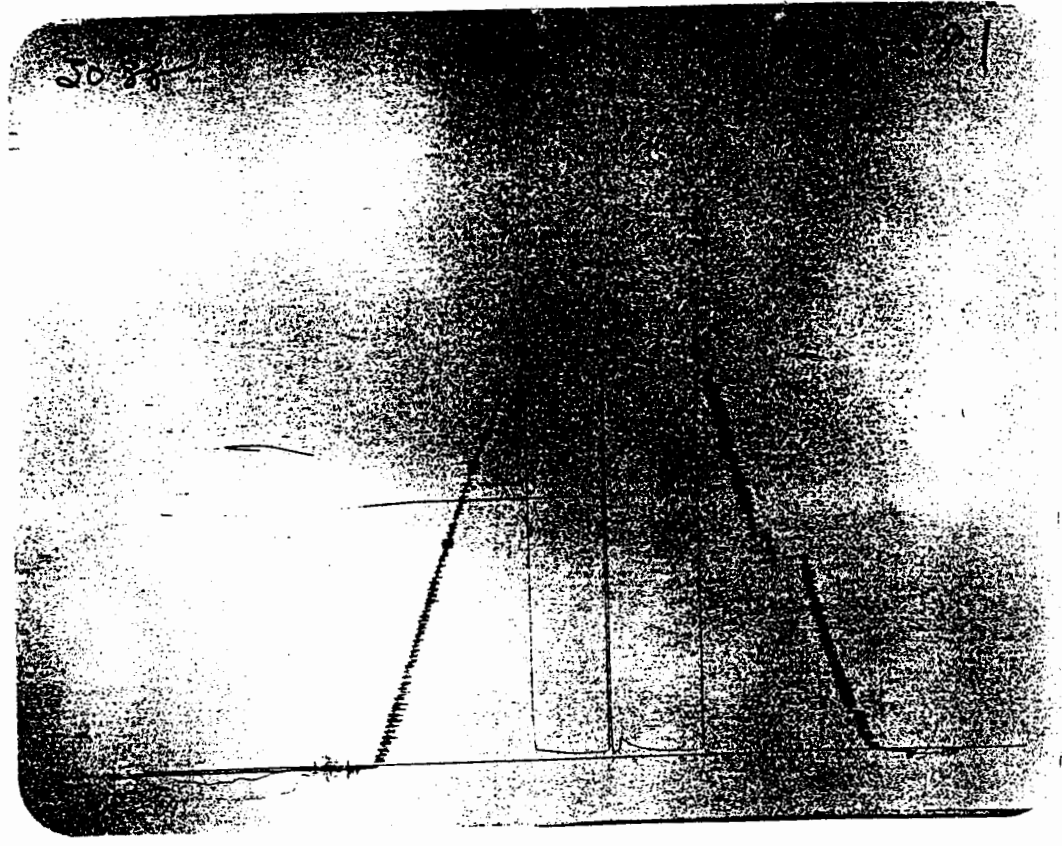
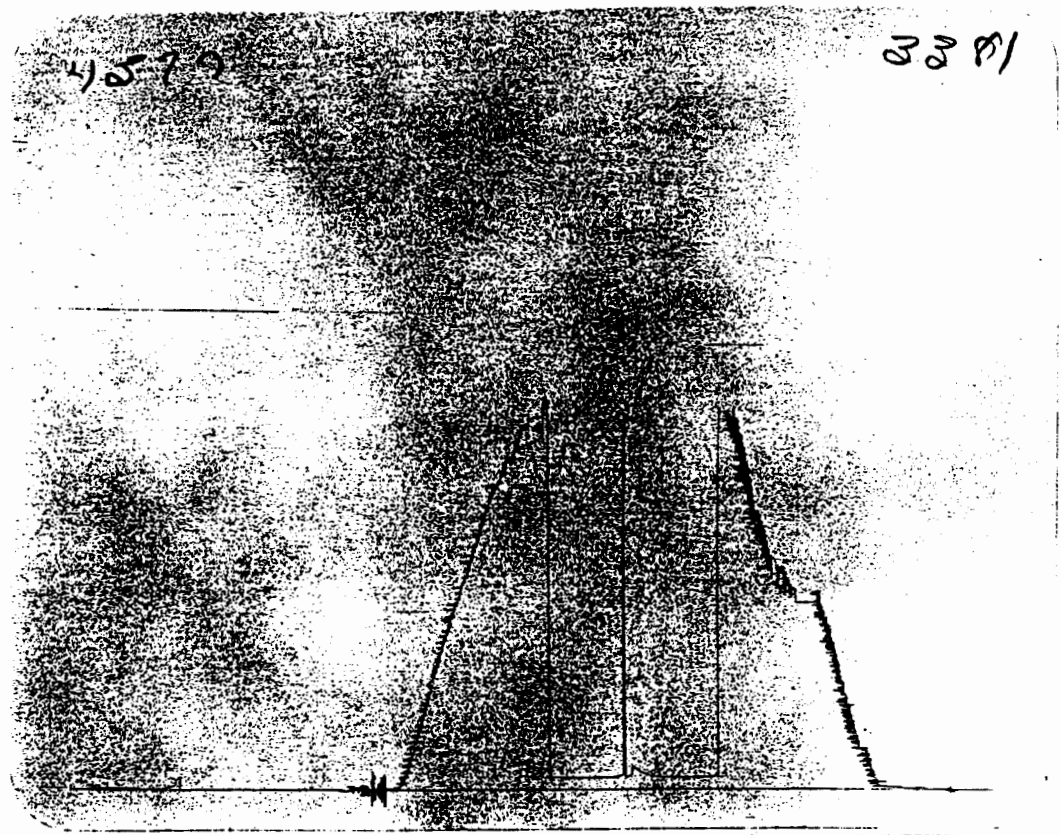
DRILL-STEM TEST DATA

Well Name	Lee Norton	Test No.	2
Well Number	1	Zone Tested	Miss
Company	Palomino Petroleum Inc	Date	11/23/00
Comp. Rep.	J Thompson	Tester	Don Fabricius
Contractor	Pickrell Drlg	Ticket No.	3381
Location	24-17-26	Elevation	

Recorder No. <u>3088</u>	Clock Range <u>12</u>	Recorder No. <u>4377</u>	Clock Range <u>12</u>
Depth <u>4417</u>		Depth <u>4421</u>	
Initial Hydro Mud Press. <u>2208</u>		Initial Hydro Mud Press. <u>2208</u>	
Initial Shut-in Press. <u>94</u>		Initial Shut-in Press. <u>94</u>	
Initial Flow Press. <u>23-23</u>		Initial Flow Press. <u>23-23</u>	
Final Flow Press. <u>35-35</u>		Final Flow Press. <u>35-35</u>	
Final Shut-in Press. <u>58</u>		Final Shut-in Press. <u>58</u>	
Final Hydro Mud Press. <u>2208</u>		Final Hydro Mud Press. <u>2208</u>	
Temperature _____		Tool Open Before I. S. I. <u>30</u>	Mins.
Mud Weight <u>9.2</u>	Viscosity <u>42</u>	Initial Shut-in <u>30</u>	Mins.
Fluid Loss <u>11.2</u>		Flow Period <u>30</u>	Mins.
Interval Tested <u>4375-4425</u>		Final Shut-in <u>30</u>	Mins.
Top Packer Depth <u>4310</u>		Surface Choke Size <u>1</u>	
Bottom Packer Depth <u>4375</u>		Bottom Choke Size <u>3/4</u>	
Total Depth <u>4425</u>		Main Hole Size <u>7 7/8</u>	
Drill Pipe Size <u>4 1/2 X H</u>	Wt. <u>16.60</u>	Rubber Size <u>6 3/4</u>	
Drill Collar I. D. _____	Ft. Run _____		
Recovery—Total Feet _____			
Recovered <u>1</u> Feet Of <u>Free oil on top</u>			
Recovered <u>15</u> Feet Of <u>Thin watery mud</u>			
Recovered _____ Feet Of _____			
Recovered _____ Feet Of _____			
Remarks			
<u>Very weak blow dead in 20 min</u>			
<u>flushed tool on second open-surge</u>			

THIS ORDER MUST BE SIGNED BEFORE WORK IS COMMENCED. CONDITIONS: It is expressly understood and agreed that the above described work shall be done under the exclusive control, direction and supervision of the owner or contractor. As a part of the consideration for this agreement, it is expressly understood and agreed that Arrow Testing Company shall not be responsible for damages or losses of any kind whatsoever occasioned by or incident to the use of the above described Tools, whether run or operated by customer, or by anyone employed directly or indirectly by Arrow Testing Company, nor whether resulting from the acts or omissions of Arrow Testing Company, or any of its agents, servants or employees in any way connected with or related to the use of such Tools.

It is expressly understood and agreed that Arrow Testing Company, shall not be bound by any agreement, not herein contained, and no agent or representative connected with or employed by Arrow Testing Company has authority to alter or extend the terms of this agreement. I have read and understand the terms of this agreement and I am authorized to sign the same as agent of customer.



ORIGINAL

ARROW TESTING COMPANY
P. O. BOX 1051 GREAT BEND, KANSAS 67530

DRILL-STEM TEST DATA

Well Name	Lee Norton	Test No.	3
Well Number	1	Zone Tested	Miss
Company	Palomino Petroleum Inc	Date	11/24/00
Comp. Rep.	J Thompson	Tester	Don Fabricius
Contractor	Pickrell Drig	Ticket No.	3382
Location	24-17-26	Elevation	

Recorder No. 3088 Clock Range 12 Recorder No. 4377 Clock Range 12
 Depth 4418 Depth 4428
 Initial Hydro Mud Press. 2265 Initial Hydro Mud Press. 2265
 Initial Shut-in Press. 1117 Initial Shut-in Press. 1117
 Initial Flow Press. 11-11 Initial Flow Press. 11-11
 Final Flow Press. 11-11 Final Flow Press. 11-11
 Final Shut-in Press. 1048 Final Shut-in Press. 1048
 Final Hydro Mud Press. 2265 Final Hydro Mud Press. 2265
 Temperature _____ Tool Open Before I. S. I. 30 Mins.
 Mud Weight 9.3 Viscosity 46 Initial Shut-in 30 Mins.
 Fluid Loss 11.2 Flow Period 30 Mins.
 Interval Tested 4425-32 Final Shut-in 30 Mins.
 Top Packer Depth 4420 Surface Choke Size 1
 Bottom Packer Depth 4425 Bottom Choke Size 3/4
 Total Depth 4432 Main Hole Size 7 7/8
 Drill Pipe Size 4 1/2 X H Wt. 16.60 Rubber Size 6 3/4
 Drill Collar I. D. _____ Ft. Run _____
 Recovery—Total Feet _____
 Recovered 15 Feet Of Thin watery mud
 Recovered _____ Feet Of _____
 Recovered _____ Feet Of _____
 Recovered _____ Feet Of _____

Remarks

Very weak blow for 30 min flushed

Tool on second open surge

THIS ORDER MUST BE SIGNED BEFORE WORK IS COMMENCED. CONDITIONS: It is expressly understood and agreed that the above described work shall be done under the exclusive control, direction and supervision of the owner or contractor. As a part of the consideration for this agreement, it is expressly understood and agreed that Arrow Testing Company shall not be responsible for damages or losses of any kind whatsoever occasioned by or incident to the use of the above described Tools, whether run or operated by customer, or by anyone employed directly or indirectly by Arrow Testing Company, nor whether resulting from the acts or omissions of Arrow Testing Company, or any of its agents, servants or employees in any way connected with or related to the use of such Tools.

It is expressly understood and agreed that Arrow Testing Company, shall not be bound by any agreement, not herein contained, and no agent or representative connected with or employed by Arrow Testing Company has authority to alter or extend the terms of this agreement. I have read and understand the terms of this agreement and represent that I am authorized to sign the same as agent of customer.

ORIGINAL



Ricketts Testing, Inc.

ORIGINAL



Company PALOMINO PETROLEUM, INC. Lease & Well No. LEE NORTON #1
 Elevation 2456 G.L. Formation MISSISSIPPI Ticket No. 1985
 Date 11-25-00 Sec. 24 Twp. 17S Range 26W County NESS State KS
 Test Approved by _____ Ricketts Representative JIM RICKETTS

Formation Test No. 4 Interval Tested from 4432 ft. to 4462 ft. Total Depth 4462 ft.
 Packer Depth 4432 ft. Size 6 3/4 in. Packer Depth _____ ft. Size _____ in.
 Packer Depth 4429 ft. Size 6 3/4 in. Packer Depth _____ ft. Size _____ in.
 Depth of Selective Zone Set _____

Top Recorder Depth (Inside) 4437 ft. Recorder Number 13306 Cap. 4625
 Bottom Recorder Depth (Outside) 4440 ft. Recorder Number 13565 Cap. 4475
 Below Straddle Recorder Depth _____ ft. Recorder Number _____ Cap. _____

Drilling Contractor Pickrell Drilling Rig #10 Drill Collar Length _____ I.D. _____ in.
 Mud Type Chemical Viscosity 46 Weight Pipe Length _____ I.D. _____ in.
 Weight 9.3 Water Loss 11.2 cc. Drill Pipe Length 4412 I.D. 3.25 in.
 Chlorides 4,000 P.P.M. Test Tool Length 20 ft. Tool Size 5 1/2 in.
 Jars: Make _____ Serial Number _____ Anchor Length 30 ft. Size 5 1/2 in.
 Did Well Flow? No Reversed Out Yes Surface Choke Size 3/4 in. Bottom Choke Size 3/4 in.
 Gravity Oil _____ Main Hole Size 7 7/8 in. Tool Joint Size 4 1/2 xh in.

Blow: Strong blow throughout test.

Recovered 2014 ft. of Salt water.
 Recovered _____ ft. of _____
 Recovered _____ ft. of _____
 Recovered _____ ft. of _____
 Recovered _____ ft. of _____

Remarks: DST Fluid Chlorides 18,000 PPM

Time Set Packer (s) 6:20 A.M. Time Started Off Bottom 8:20 A.M. Maximum Temperature 123°
 Initial Hydrostatic Pressure(A) 2218 P.S.I.
 Initial Flow PeriodMinutes 30 (B) 70 P.S.I. to
 (C) 333 P.S.I.
 Initial Closed In PeriodMinutes 30 (D) 1213 P.S.I.
 Final Flow PeriodMinutes 30 (E) 395 P.S.I. to
 (F) 590 P.S.I.
 Final Closed In PeriodMinutes 30 (G) 1210 P.S.I.
 Final Hydrostatic Pressure(H) 2193 P.S.I.

RICKETTS TESTING, INC.

Pressure Data

ORIGINAL

Date 11-25-00 Test Ticket No. 1985
 Recorder No. 13306 Capacity 4625 Location 4437 Ft.
 Clock No. _____ Elevation 2456 G.L. Well Temperature 123 °F

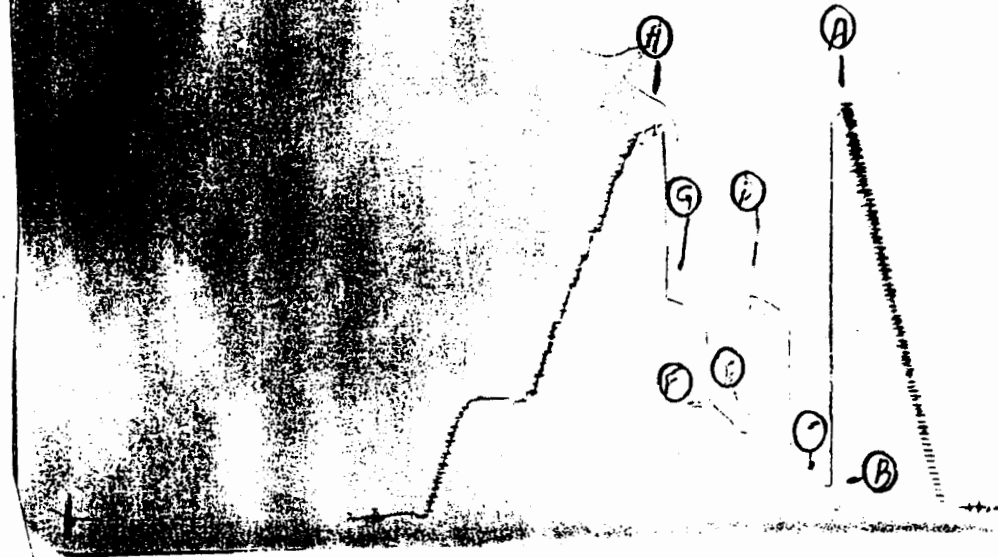
Point	Pressure		Time	
			Given	Computed
A	Initial Hydrostatic Mud	2218 P.S.I.	6:20	A M
B	First Initial Flow Pressure	70 P.S.I.	30	Mins. 30 Mins.
C	First Final Flow Pressure	333 P.S.I.	30	Mins. 30 Mins.
D	Initial Closed-in Pressure	1213 P.S.I.	30	Mins. 30 Mins.
E	Second Initial Flow Pressure	395 P.S.I.	30	Mins. 30 Mins.
F	Second Final Flow Pressure	590 P.S.I.	30	Mins. 30 Mins.
G	Final Closed-in Pressure	1210 P.S.I.		
H	Final Hydrostatic Mud	2193 P.S.I.		

PRESSURE BREAKDOWN

Point Mins.	First Flow Pressure		Initial Shut-In		Second Flow Pressure		Final Shut-In	
	Breakdown:	Inc.	Breakdown:	Inc.	Breakdown:	Inc.	Breakdown:	Inc.
	of 5 mins. and a final inc. of _____ Min.		of 3 mins. and a final inc. of _____ Min.		of 5 mins. and a final inc. of _____ Min.		of 3 mins. and a final inc. of _____ Min.	
Point Mins.	Press.	Point Minutes	Press.	Point Minutes	Press.	Point Minutes	Press.	
P 1 0	70	0	333	0	395	0	590	
P 2 5	81	3	996	5	404	3	1028	
P 3 10	131	6	1060	10	445	6	1083	
P 4 15	193	9	1108	15	487	9	1115	
P 5 20	246	12	1138	20	524	12	1137	
P 6 25	291	15	1158	25	565	15	1158	
P 7 30	333	18	1174	30	590	18	1171	
P 8 35		21	1187	35		21	1179	
P 9 40		24	1198	40		24	1190	
P10 45		27	1207	45		27	1199	
P11 50		30	1213	50		30	1210	
P12 55		33		55		33		
P13 60		36		60		36		
P14 65		39		65		39		
P15 70		42		70		42		
P16 75		45		75		45		
P17 80		48		80		48		
P18 85		51		85		51		
P19 90		54		90		54		
P19 95		57				57		
P20		60				60		

ORIGINAL

DSTI # 4 TK # 1985



This is an actual photograph of recorder chart.

POINT	PRESSURE		
	Field Reading	Office Reading	
(A) Initial Hydrostatic Mud	2212	2218	PSI
(B) First Initial Flow Pressure	80	70	PSI
(C) First Final Flow Pressure	317	333	PSI
(D) Initial Closed-in Pressure	1214	1213	PSI
(E) Second Initial Flow Pressure	399	395	PSI
(F) Second Final Flow Pressure	578	590	PSI
(G) Final Closed-in Pressure	1214	1210	PSI
(H) Final Hydrostatic Mud	2188	2193	PSI