

BEREXCO INC.

**Repshire "A" # 3**

NW NW, Section 23, T17S, R27W

Lane County, Kansas

<u>ZONE</u>	<u>SAMPLES</u>	<u>DRILL STEM TESTS</u>
"A":	Lime, poor to very poor porosity, no shows.	No DST
"B":	Lime, poor to very poor porosity, trace fluorescence in tite spots. No free oil.	No DST
"C-D":	Lime, poor to very poor porosity, 99% barren, trace light free oil on one grain.	No DST
"E":	Lime, poor to very poor porosity, no shows.	No DST
"G":	Lime, fair to very good porosity, oomoldic, no shows.	No DST
"H":	Lime, poor to very poor porosity, no shows.	<b>DST # 1, H , Interval 4135'-4165'</b> Times 30 45 30 45 IF: 3/4"blow. FF: No blow, flush tool, no blow. Recovery: 15' Mud IFP 55-40#, FFP 55-55#, ISIP 624#, FSIP 567#, IHP 2076#, FHP 2065#
"I":	Lime,poor to very poor porosity, trace fair porosity, no shows.	No DST
"J":	Lime, poor to very poor porosity, no shows.	No DST
"K":	Lime, poor to very poor porosity, no shows.	<b>DST # 4, K , Straddle Interval 4227'-4263' rotary measurement</b> Times 30 45 30 45 IF: 1/4" blow. FF: No blow. Recovery: 20' Mud with oil specks. IFP 44-33#, FFP 44-33#, ISIP 333#, FSIP 288#, IHP 2143#, FHP 2132#
"L-1":	Lime, poor porosity, trace stain, slight show free oil.	<b>DST # 2, L-1 &amp; L , Interval 4269'-4310'</b>
"L":	Lime, poor to fair porosity, trace good porosity, spotted to subsaturated stain, slight show free oil.	Times 30 45 30 60 IF: 1/4" blow dead in 29 minutes. FF: No blow, flush tool, weak blow dead in 15 minutes Recovery: 10' Mud with oil scum. IFP 33-22#, FFP 33-22#, ISIP 359#, FSIP 328#, IHP 2129#, FHP 2115#

BEREXCO INC.

**Repshire "A" # 3**

NW NW, Section 23, T17S, R27W

Lane County, Kansas

ZONE SAMPLES

- Marm: Lime, rare poor porosity, very rare very slight show free oil.  
Alt: Lime, poor porosity, trace show free oil.  
Alt C: Lime, very rare trace fair to good porosity, fair show free oil.  
Paw: Lime, very poor porosity, trace show free oil.  
FtSct: Lime, poor to fair porosity, trace good porosity in lower bench, slight show free oil.
- Cher: Lime, very poor porosity, trace show free oil.
- JZ: Lime, very poor to poor porosity, trace show free oil.
- Cher.Sd: Not present.
- Miss.: Lime, fair to good porosity, no shows.

DRILL STEM TESTS

**DST # 3, Marm, Alt. Paw, Fort Scott, Interval 4307'-4518'**

Times 30 45 30 45

IF: Weak surface blow. FF: No blow, flush tool, weak blow dead in 15 minutes.

Recovery: 30' Mud with oil scum.

IFP 55-44#, FFP 55-44#, ISIP 177#, FSIP 88#, IHP 2210#, FHP 2199#

TRILOBITE TESTING L.L.C.

OPERATOR : Berexco, Inc. DATE 3-2-00  
 WELL NAME: Repshire A #3 KB 2675.00 ft TICKET NO: 11191 DST #1  
 LOCATION : 23-17s-27w Lane co KS GR 2670.00 ft FORMATION: "H"  
 INTERVAL : 4135.00 To 4165.00 ft TD 4165.00 ft TEST TYPE: CONVENTIONAL

RECORDER DATA

Mins	Field	1	2	3	4	TIME DATA-----
PF 30 Rec.	11058	11058				PF Fr. 0530 to 0600 hr
SI 45 Range (Psi )	4475.0	4475.0	0.0	0.0	0.0	IS Fr. 0600 to 0645 hr
SF 30 Clock (hrs)	12hr	12hr				SF Fr. 0645 to 0715 hr
FS 45 Depth (ft )	4160.0	4160.0	0.0	0.0	0.0	FS Fr. 0715 to 0800 hr

	Field	1	2	3	4	
A. Init Hydro	2076.0	2072.0	0.0	0.0	0.0	T STARTED 0310 hr
B. First Flow	55.0	64.0	0.0	0.0	0.0	T ON BOTM 0525 hr
B1. Final Flow	44.0	54.0	0.0	0.0	0.0	T OPEN 0530 hr
C. In Shut-in	624.0	626.0	0.0	0.0	0.0	T PULLED 0800 hr
D. Init Flow	55.0	71.0	0.0	0.0	0.0	T OUT 1010 hr
E. Final Flow	55.0	71.0	0.0	0.0	0.0	
F. Fl Shut-in	567.0	572.0	0.0	0.0	0.0	TOOL DATA-----
G. Final Hydro	2065.0	2060.0	0.0	0.0	0.0	Tool Wt. 4000.00 lbs
Inside/Outside	0	0				Wt Set On Packer 24000.00 lbs
						Wt Pulled Loose 65000.00 lbs
						Initial Str Wt 42000.00 lbs
						Unseated Str Wt 42000.00 lbs
						Bot Choke 0.75 in
						Hole Size 7.88 in
						D Col. ID 2.25 in
						D. Pipe ID 3.80 in
						D.C. Length 0.00 ft
						D.P. Length 4128.00 ft

RECOVERY

Tot Fluid 15.00 ft of 0.00 ft in DC and 15.00 ft in DP  
 15.00 ft of Drilling mud  
 0.00 ft of 100% mud  
 0.00 ft of  
 0.00 ft of  
 0.00 ft of  
 0.00 ft of  
 0.00 ft of  
 0.00 ft of  
 SALINITY 0.00 P.P.M. A.P.I. Gravity 0.00

MUD DATA-----

Mud Type	Chemical
Weight	9.40 lb/cf
Vis.	48.00 S/L
W.L.	8.00 in3
F.C.	0.00 in
Mud Drop	
Amt. of fill	0.00 ft
Btm. H. Temp.	114.00 F
Hole Condition	
% Porosity	0.00
Packer Size	6.75 in
No. of Packers	2
Cushion Amt.	0.00
Cushion Type	
Reversed Out	
Tool Chased	
Tester	Shane McBride
Co. Rep.	Roger Martin
Contr.	L.D.
Rig #	1
Unit #	
Pump T.	

BLOW DESCRIPTION

Initial Flow:  
 Weak 3/4" blow.

Initial Shut-In:  
 No return.

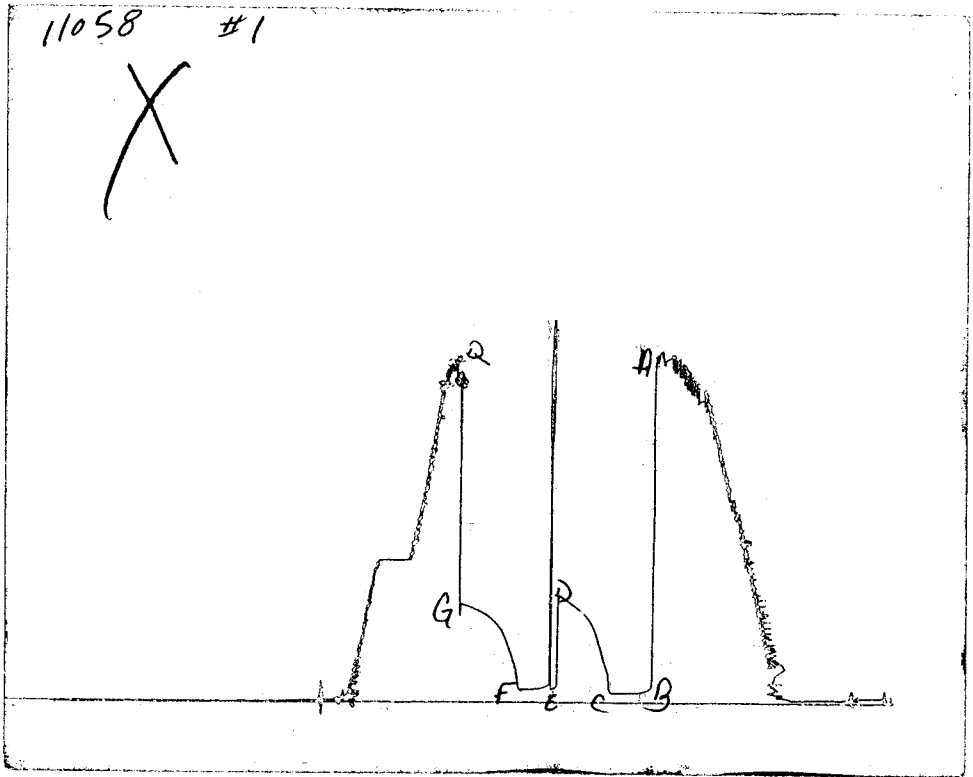
Final Flow:  
 No blow. Flushed tool. No blow.

Final Shut-In:  
 No return.

SAMPLES:  
 SENT TO:

Test Successful: Y

# CHART PAGE



This is a photocopy of the actual AK-1 recorder chart

# TRILOBITE TESTING L.L.C.

P.O. Box 362 • Hays, Kansas 67601

## Test Ticket

No 11191

Well Name & No. Repshire A #3 Test No. 1 Date 3-2-00  
 Company Berexco Inc. Zone Tested "H"  
 Address 100N Broadway Suite 970, Wichita Ks 67202 Elevation 2625' KB 2670' GL  
 Co. Rep / Geo. Roger Martin Cont. L.D. Est. Ft. of Pay      Por.     %  
 Location: Sec. 23 Twp. 17S Rge. 27W Co. Lane State Ks  
 No. of Copies N/A Distribution Sheet (Y, N)      Turnkey (Y, N)      Evaluation (Y, N)     

Interval Tested 4135' 4145' Initial Str Wt./Lbs. 42,000 Unseated Str Wt./Lbs. 42,000  
 Anchor Length      30' Wt. Set Lbs. 24,000 Wt. Pulled Loose/Lbs. 65,000  
 Top Packer Depth      4130' Tool Weight 4,000  
 Bottom Packer Depth      4135' Hole Size — 7 7/8" ✓ Rubber Size — 6 3/4" ✓  
 Total Depth      4165' Wt. Pipe Run      Drill Collar Run       
 Mud Wt. 9.4 LCM T Vis. 48 WL 8.0 Drill Pipe Size 4 1/2 XH Ft. Run 4128'  
 Blow Description Weak 3/4" w blow  
No return  
No blow — Flush tool — No blow  
No return

Recovery — Total Feet	GIP	Ft. in DC	Ft. in DP
<u>15'</u>	<u>    </u>	<u>    </u>	<u>15'</u>
Rec. <u>15'</u> Feet Of <u>Daily Mud</u>	%gas	%oil	%water <u>100%</u> %mud
Rec. <u>    </u> Feet Of <u>    </u>	%gas	%oil	%water <u>    </u> %mud
Rec. <u>    </u> Feet Of <u>    </u>	%gas	%oil	%water <u>    </u> %mud
Rec. <u>    </u> Feet Of <u>    </u>	%gas	%oil	%water <u>    </u> %mud
Rec. <u>    </u> Feet Of <u>    </u>	%gas	%oil	%water <u>    </u> %mud

BHT 114° °F Gravity      °API D@      °F Corrected Gravity      °API

RW      @      °F Chlorides      ppm Recovery Chlorides 2,500 ppm System

(A) Initial Hydrostatic Mud 2076 PSI Recorder No. 11057 T-Started 03:10 a.m.  
 (B) First Initial Flow Pressure 55 PSI (depth) 4150' T-Open 05:30 a.m.  
 (C) First Final Flow Pressure 44 PSI Recorder No. 11058 T-Pulled 08:00 a.m.  
 (D) Initial Shut-in Pressure 624 PSI (depth) 4160' T-Out 10:10 a.m.  
 (E) Second Initial Flow Pressure 55 PSI Recorder No.      on loc. 12:20 a.m.  
 (F) Second Final Flow Pressure 55 PSI (depth)      off loc. 11:00 a.m.  
 (G) Final Shut-in Pressure 567 PSI Initial Opening 30 Test X  
 (H) Final Hydrostatic Mud 2065 PSI Initial Shut-in 45 Jars X  
 Final Flow 30 Safety Joint X  
 Final Shut-in 45 Straddle       
 Circ. Sub X N/A  
 Sampler       
 Extra Packer       
 Elect. Rec.       
 Other       
 TOTAL PRICE \$     

TRILOBITE TESTING L.L.C. SHALL NOT BE LIABLE FOR DAMAGE OF ANY KIND OF THE PROPERTY OR PERSONNEL OF THE ONE FOR WHOM A TEST IS MADE, OR FOR ANY LOSS SUFFERED OR SUSTAINED, DIRECTLY OR INDIRECTLY, THROUGH THE USE OF ITS EQUIPMENT, OR ITS STATEMENTS OR OPINION CONCERNING THE RESULTS OF ANY TEST. TOOLS LOST OR DAMAGED IN THE HOLE SHALL BE PAID FOR AT COST BY THE PARTY FOR WHOM THE TEST IS MADE.

Approved By Roger Martin  
 Our Representative Shane McBurn

TRILOBITE TESTING L.L.C.

OPERATOR : Berexco, Inc. DATE 3-3-00  
 WELL NAME: Repshire A #3 KB 2675.00 ft TICKET NO: 11192 DST #2  
 LOCATION : 2317s 27w Lane co KS GR 2670.00 ft FORMATION: L  
 INTERVAL : 4269.00 To 4310.00 ft TD 4310.00 ft TEST TYPE: CONVENTIONAL

RECORDER DATA

Mins		Field	1	2	3	4	TIME DATA-----
PF 30	Rec.	2023	2023				PF Fr. 1145 to 1215 hr
SI 45	Range(Psi )	4000.0	4000.0	0.0	0.0	0.0	IS Fr. 1215 to 1300 hr
SF 30	Clock(hrs)	12hr	12hr				SF Fr. 1300 to 1330 hr
FS 60	Depth(ft )	4300.0	4300.0	0.0	0.0	0.0	FS Fr. 1330 to 1430 hr

	Field	1	2	3	4	
A. Init Hydro	2129.0	2119.0	0.0	0.0	0.0	T STARTED 1000 hr
B. First Flow	33.0	38.0	0.0	0.0	0.0	T ON BOTM 1140 hr
B1. Final Flow	22.0	19.0	0.0	0.0	0.0	T OPEN 1145 hr
C. In Shut-in	359.0	359.0	0.0	0.0	0.0	T PULLED 1430 hr
D. Init Flow	33.0	49.0	0.0	0.0	0.0	T OUT 1645 hr
E. Final Flow	22.0	27.0	0.0	0.0	0.0	
F. Fl Shut-in	328.0	328.0	0.0	0.0	0.0	TOOL DATA-----
G. Final Hydro	2119.0	2119.0	0.0	0.0	0.0	Tool Wt. 4600.00 lbs
Inside/Outside	I	I				Wt Set On Packer 26000.00 lbs
						Wt Pulled Loose 68000.00 lbs
						Initial Str Wt 44000.00 lbs
						Unseated Str Wt 44000.00 lbs
						Bot Choke 0.75 in
						Hole Size 7.88 in
						D Col. ID 2.25 in
						D. Pipe ID 3.80 in
						D.C. Length 0.00 ft
						D.P. Length 4282.00 ft

RECOVERY

Tot Fluid 10.00 ft of 0.00 ft in DC and 10.00 ft in DP  
 10.00 ft of Drilling mud with oil scum.  
 0.00 ft of 100% mud  
 0.00 ft of  
 0.00 ft of  
 0.00 ft of  
 0.00 ft of  
 0.00 ft of  
 0.00 ft of

SALINITY 0.00 P.P.M. A.P.I. Gravity 0.00

BLOW DESCRIPTION

Initial Flow:  
 Weak 1/4" blow. Died in 29 minutes.

Initial Shut-In:

No return.

Final Flow:

Weak surface blow died in 4 minutes.  
 Flushed tool. Good surge died in 15 minutes.

Final Shut-In:

No return.

SAMPLES:

SENT TO:

MUD DATA-----

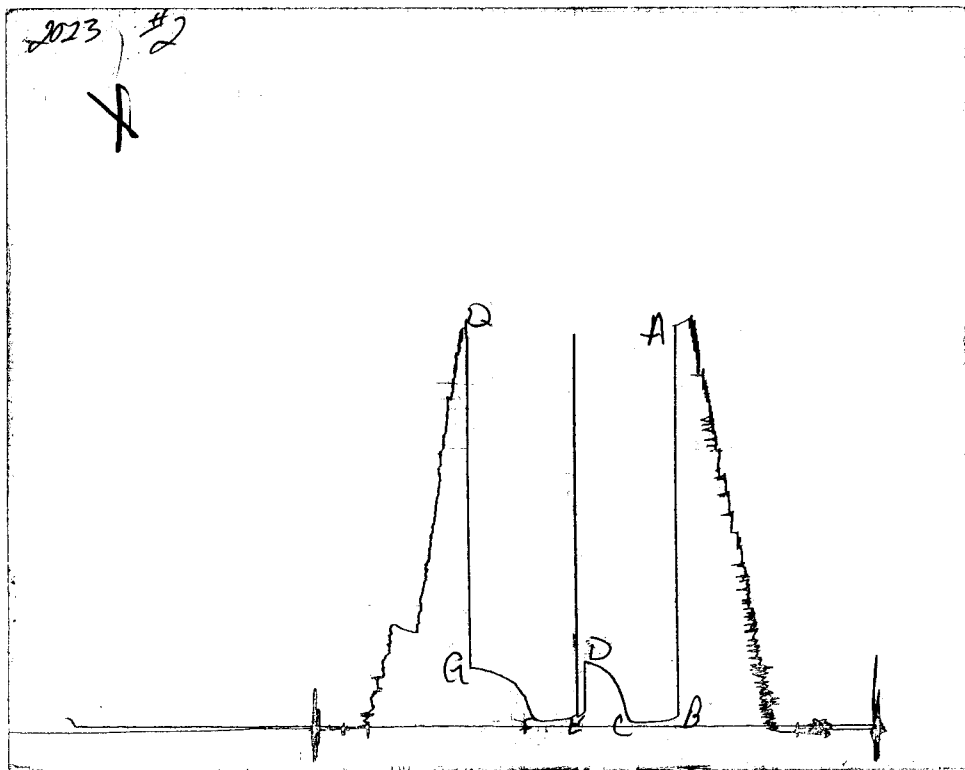
Mud Type Chemical  
 Weight 9.30 lb/c.  
 Vis. 51.00 S/L  
 W.L. 9.60 in3  
 F.C. 0.00 in  
 Mud Drop

Amt. of fill 0.00 ft  
 Btm. H. Temp. 1180.00 F  
 Hole Condition  
 % Porosity 0.00  
 Packer Size 6.75 in  
 No. of Packers 2  
 Cushion Amt. 0.00

Cushion Type  
 Reversed Out  
 Tool Chased  
 Tester Shane McBride  
 Co. Rep. Roger Martin  
 Contr. LD  
 Rig # 1  
 Unit #  
 Pump T.

Test Successful: Y

# CHART PAGE



This is a photocopy of the actual AK-1 recorder chart

# TRILOBITE TESTING L.L.C.

P.O. Box 362 • Hays, Kansas 67601

## Test Ticket

No 11192

Well Name & No. Repshire A #3 Test No. 2 Date 3-3-00  
 Company Berexo Inc. Zone Tested L  
 Address 100 N Broadway, Suite 970, Wichita, Ks 67202 Elevation 2675 KB 2610 GL  
 Co. Rep / Geo. Roger Martin Cont. L.D. Est. Ft. of Pay \_\_\_\_\_ Por. \_\_\_\_\_ %  
 Location: Sec. 23 Twp. 12S Rge. 27W Co. LANE State Ks  
 No. of Copies Norm. Distribution Sheet (Y, N) \_\_\_\_\_ Turnkey (Y, N) \_\_\_\_\_ Evaluation (Y, N) \_\_\_\_\_

Interval Tested 4269' 4310' Initial Str Wt./Lbs. 44,000 Unseated Str Wt./Lbs. 44,000  
 Anchor Length \_\_\_\_\_ 41' Wt. Set Lbs. 26,000 Wt. Pulled Loose/Lbs. 68,000  
 Top Packer Depth \_\_\_\_\_ 4264' Tool Weight 4,800  
 Bottom Packer Depth \_\_\_\_\_ 4269' Hole Size — 7 7/8"  Rubber Size — 6 3/4"   
 Total Depth \_\_\_\_\_ 4310 Wt. Pipe Run \_\_\_\_\_ Drill Collar Run \_\_\_\_\_  
 Mud Wt. 9.3 LCM Tr Vis. 51 WL 9.6 Drill Pipe Size 4 1/2 X 4 Ft. Run 4282'  
 Blow Description Weak 1/4" in blow, died in 29 min.  
No return  
Weak surface blow died in 4 min, Flush Tool-Good Surge died in 15 min.  
No return

Recovery — Total Feet	GIP	Ft. in DC	Ft. in DP
<u>10'</u>	_____	_____	<u>10'</u>
Rec. _____ Feet Of _____	<u>Daily Mud w/ Separator</u>	%gas _____ %oil _____	%water <u>100</u> %mud _____
Rec. _____ Feet Of _____		%gas _____ %oil _____	%water _____ %mud _____
Rec. _____ Feet Of _____		%gas _____ %oil _____	%water _____ %mud _____
Rec. _____ Feet Of _____		%gas _____ %oil _____	%water _____ %mud _____

BHT 118° °F Gravity \_\_\_\_\_ °API D@ \_\_\_\_\_ °F Corrected Gravity \_\_\_\_\_ °API  
 RW \_\_\_\_\_ @ \_\_\_\_\_ °F Chlorides \_\_\_\_\_ ppm Recovery Chlorides 2,500 ppm System  
 (A) Initial Hydrostatic Mud 2129 PSI Recorder No. 2013 T-Started 10:00 a.m.  
 (B) First Initial Flow Pressure 33 PSI (depth) 430' T-Open 11:45 p.m.  
 (C) First Final Flow Pressure 22 PSI Recorder No. 11058 T-Pulled 14:30 p.m.  
 (D) Initial Shut-in Pressure 359 PSI (depth) 4305' T-Out 16:45 p.m.  
 (E) Second Initial Flow Pressure 33 PSI Recorder No. \_\_\_\_\_ 07:46 a.m.  
 (F) Second Final Flow Pressure 22 PSI (depth) \_\_\_\_\_ 05:00 p.m.  
 (G) Final Shut-in Pressure 328 PSI Initial Opening 30 Test 1  
 (H) Final Hydrostatic Mud 2119 PSI Initial Shut-in 45 Jars \_\_\_\_\_  
 Final Flow 30 Safety Joint Y  
 Final Shut-in 60 Straddle \_\_\_\_\_  
 Circ. Sub N/A  
 Sampler \_\_\_\_\_  
 Extra Packer \_\_\_\_\_  
 Elect. Rec. \_\_\_\_\_  
 Other \_\_\_\_\_  
 TOTAL PRICE \$ \_\_\_\_\_

TRILOBITE TESTING L.L.C. SHALL NOT BE LIABLE FOR DAMAGE OF ANY KIND OF THE PROPERTY OR PERSONNEL OF THE ONE FOR WHOM A TEST IS MADE, OR FOR ANY LOSS SUFFERED OR SUSTAINED, DIRECTLY OR INDIRECTLY, THROUGH THE USE OF ITS EQUIPMENT, OR ITS STATEMENTS OR OPINION CONCERNING THE RESULTS OF ANY TEST. TOOLS LOST OR DAMAGED IN THE HOLE SHALL BE PAID FOR AT COST BY THE PARTY FOR WHOM THE TEST IS MADE.

Approved By Roger Martin  
 Our Representative Shane M.B. [Signature]

TRILOBITE TESTING L.L.C.

OPERATOR : Berexco, Inc. DATE 3-4-00  
 WELL NAME: Repshire A #3 KB 2675.00 ft TICKET NO: 11193 DST #3  
 LOCATION : 23-17s-27w Lane co KS GR 2670.00 ft FORMATION: Marmaton/Ft. Scott  
 INTERVAL : 4307.00 To 4518.00 ft TD 4518.00 ft TEST TYPE: CONVENTIONAL

RECORDER DATA

Mins	Field	1	2	3	4	TIME DATA-----
PF 30	Rec. 2023	2023				PF Fr. 1815 to 1845 hr
SI 45	Range(Psi )	4000.0	4000.0	0.0	0.0	IS Fr. 1845 to 1930 hr
SF 30	Clock(hrs)	12hr	12hr			SF Fr. 1930 to 2000 hr
FS 45	Depth(ft )	4324.0	4324.0	0.0	0.0	FS Fr. 2000 to 2045 hr

	Field	1	2	3	4	
A. Init Hydro	2210.0	1945.0	0.0	0.0	0.0	T STARTED 1620 hr
B. First Flow	55.0	36.0	0.0	0.0	0.0	T ON BOTM 1810 hr
Bl. Final Flow	44.0	36.0	0.0	0.0	0.0	T OPEN 1815 hr
C. In Shut-in	177.0	179.0	0.0	0.0	0.0	T PULLED 045 hr
D. Init Flow	55.0	47.0	0.0	0.0	0.0	T OUT 2315 hr
E. Final Flow	44.0	47.0	0.0	0.0	0.0	
F. Fl Shut-in	88.0	86.0	0.0	0.0	0.0	
G. Final Hydro	2199.0	1924.0	0.0	0.0	0.0	TOOL DATA-----
Inside/Outside	I	I				Tool Wt. 6000.00 lbs
						Wt Set On Packer 30000.00 lbs
						Wt Pulled Loose 70000.00 lbs
						Initial Str Wt 46000.00 lbs
						Unseated Str Wt 46000.00 lbs

RECOVERY

Tot Fluid	30.00 ft of	0.00 ft in DC and	30.00 ft in DP			Bot Choke 0.75 in
30.00	ft of Drilling Mud with oil spots					Hole Size 7.88 in
0.00	ft of 100% mud					D Col. ID 2.25 in
0.00	ft of					D. Pipe ID 3.80 in
0.00	ft of					D.C. Length 0.00 ft
0.00	ft of					D.P. Length 4500.00 ft
0.00	ft of					
0.00	ft of					
SALINITY	0.00 P.P.M.	A.P.I. Gravity	0.00			

MUD DATA-----

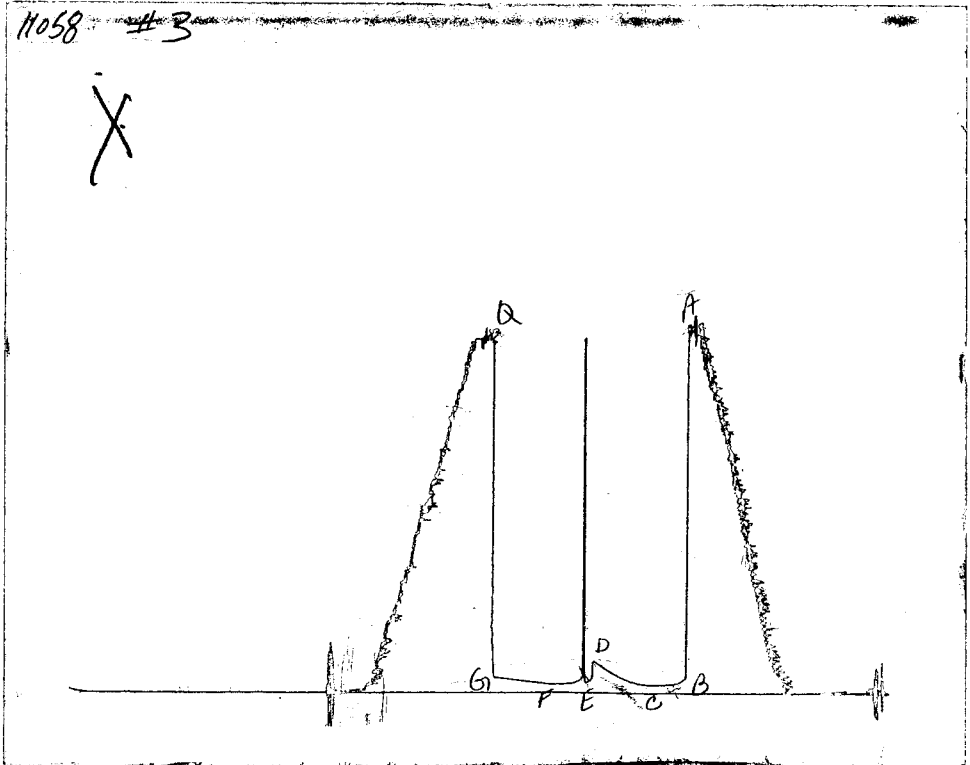
BLOW DESCRIPTION

Initial Flow:  
 Surface blow built to 1" in 20 minutes. Died back to 1/2".  
 Initial Shut-In:  
 No return.  
 Final Flow:  
 No blow, Fluhsed tool 5 minutes into flow. Good surge. Died in 15 minutes  
 Final Shut-In:  
 No return.

Mud Type	Chemical
Weight	9.40 lb/c
Vis.	48.00 S/L
W.L.	9.60 in3
F.C.	0.00 in
Mud Drop	
Amt. of fill	0.00 ft
Btm. H. Temp.	117.00 F
Hole Condition	
% Porosity	0.00
Packer Size	6.75 in
No. of Packers	2
Cushion Amt.	0.00
Cushion Type	
Reversed Out	
Tool Chased	
Tester	Shane McBride
Co. Rep.	Roger Martin
Contr.	LD
Rig #	1
Unit #	
Pump T.	

Test Successful: Y

# CHART PAGE



This is a photocopy of the actual AK-1 recorder chart

# TRILOBITE TESTING L.L.C.

P.O. Box 362 • Hays, Kansas 67601

## Test Ticket

No 11193

Well Name & No. Repshire A #3 Test No. 3 Date 3-4-00  
 Company Berexco Inc. Zone Tested Marathon / Ft. Scott  
 Address 100 N Broadway, Suite 970, Wichita, Ks 67202 Elevation 2675 KB 2670' GL  
 Co. Rep / Geo. Roger Martin Cont. L.D. Est. Ft. of Pay \_\_\_\_\_ Por. \_\_\_\_\_ %  
 Location: Sec. 23 Twp. 17S Rge. 27W Co. LANC State Ks  
 No. of Copies Norm. Distribution Sheet (Y, N) \_\_\_\_\_ Turnkey (Y, N) \_\_\_\_\_ Evaluation (Y, N) \_\_\_\_\_

Interval Tested 4307 4518' Initial Str Wt./Lbs. 46,000 Unseated Str Wt./Lbs. 46,000  
 Anchor Length \_\_\_\_\_ 211' Wt. Set Lbs. 30,000 Wt. Pulled Loose/Lbs. 71,000  
 Top Packer Depth \_\_\_\_\_ 4302' Tool Weight 6,000  
 Bottom Packer Depth \_\_\_\_\_ 4307' Hole Size — 7 7/8"  Rubber Size — 6 3/4"   
 Total Depth \_\_\_\_\_ 4518' Wt. Pipe Run \_\_\_\_\_ Drill Collar Run \_\_\_\_\_  
 Mud Wt. 9.4 LCM #1 Vis. 48 WL 9.6 Drill Pipe Size 4 1/2 XH Ft. Run 4500'  
 Blow Description Surface blow built to 1 1/2" in 20 min. blow died back to 1/2" in.  
No return  
No blow, Flush Tool 5 min into flow - Good Surge blow died in 15 min.  
No return

Recovery — Total Feet	GIP	Ft. in DC	Ft. in DP
<u>30'</u>	—	—	<u>30'</u>
Rec. <u>30'</u>	Feet Of <u>Dr. by MUD w/ oil spots, same on top</u>	%gas <u>sum spots</u>	%oil _____ %water <u>100</u> %mud _____
Rec. _____	Feet Of _____	%gas _____ %oil _____	%water _____ %mud _____
Rec. _____	Feet Of _____	%gas _____ %oil _____	%water _____ %mud _____
Rec. _____	Feet Of _____	%gas _____ %oil _____	%water _____ %mud _____
Rec. _____	Feet Of _____	%gas _____ %oil _____	%water _____ %mud _____

BHT 117° °F Gravity \_\_\_\_\_ °API D@ \_\_\_\_\_ °F Corrected Gravity \_\_\_\_\_ °API  
 RW \_\_\_\_\_ @ \_\_\_\_\_ °F Chlorides \_\_\_\_\_ ppm Recovery Chlorides 3000 ppm System  
 (A) Initial Hydrostatic Mud 2210 PSI Recorder No. 2023 T-Started 16:20 p.m.  
 (B) First Initial Flow Pressure 55 PSI (depth) 4324' T-Open 18:15 p.m.  
 (C) First Final Flow Pressure 44 PSI Recorder No. 11058 T-Pulled 20:45 p.m.  
 (D) Initial Shut-in Pressure 177 PSI (depth) 4515' T-Out 23:15 p.m.  
 (E) Second Initial Flow Pressure 55 PSI Recorder No. \_\_\_\_\_ en loc. 14:30 p.m.  
 (F) Second Final Flow Pressure 44 PSI (depth) \_\_\_\_\_ off loc 12:00 p.m.  
 (G) Final Shut-in Pressure 88 PSI Initial Opening 30 Test   
 (H) Final Hydrostatic Mud 2199 PSI Initial Shut-in 45 Jars \_\_\_\_\_  
 Final Flow 30 Safety Joint   
 Final Shut-in 45 Straddle \_\_\_\_\_

TRILOBITE TESTING L.L.C. SHALL NOT BE LIABLE FOR DAMAGE OF ANY KIND OF THE PROPERTY OR PERSONNEL OF THE ONE FOR WHOM A TEST IS MADE, OR FOR ANY LOSS SUFFERED OR SUSTAINED, DIRECTLY OR INDIRECTLY, THROUGH THE USE OF ITS EQUIPMENT, OR ITS STATEMENTS OR OPINION CONCERNING THE RESULTS OF ANY TEST. TOOLS LOST OR DAMAGED IN THE HOLE SHALL BE PAID FOR AT COST BY THE PARTY FOR WHOM THE TEST IS MADE.

Approved By Roger L. Martin  
 Our Representative Steve McBride

Circ. Sub  N/K  
 Sampler \_\_\_\_\_  
 Extra Packer \_\_\_\_\_  
 Elect. Rec. \_\_\_\_\_  
 Other \_\_\_\_\_  
 TOTAL PRICE \$ \_\_\_\_\_

TRILOBITE TESTING L.L.C.

OPERATOR : Berexco, Inc. DATE 3-6-00  
 WELL NAME: Repshire A #3 KB 2675.00 ft TICKET NO: 11194 DST #4  
 LOCATION : 23-17s-27w Lane co KS GR 2670.00 ft FORMATION: K  
 INTERVAL : 4227.00 To 4263.00 ft TD 4650.00 ft TEST TYPE: CONVENTIONAL

RECORDER DATA

Mins	Field	1	2	3	4	TIME DATA-----
PF 30	Rec.	11058	11058			PF Fr. 0935 to 1005 hr
SI 45	Range(Psi )	4475.0	4475.0	0.0	0.0	IS Fr. 1005 to 1050 hr
SF 30	Clock(hrs)	12hr	12hr			SF Fr. 1050 to 1120 hr
FS 45	Depth(ft )	4237.0	4237.0	0.0	0.0	FS Fr. 1120 to 1205 hr

	Field	1	2	3	4	
A. Init Hydro	2143.0	2169.0	0.0	0.0	0.0	T STARTED 0730 hr
B. First Flow	44.0	47.0	0.0	0.0	0.0	T ON BOTM 0930 hr
B1. Final Flow	33.0	47.0	0.0	0.0	0.0	T OPEN 0935 hr
C. In Shut-in	333.0	340.0	0.0	0.0	0.0	T PULLED 1205 hr
D. Init Flow	44.0	52.0	0.0	0.0	0.0	T OUT 1405 hr
E. Final Flow	33.0	52.0	0.0	0.0	0.0	
F. Fl Shut-in	288.0	300.0	0.0	0.0	0.0	
G. Final Hydro	2132.0	2084.0	0.0	0.0	0.0	TOOL DATA-----
Inside/Outside	I	I				Tool Wt. 10000.00 lbs
						Wt Set On Packer 36000.00 lbs
						Wt Pulled Loose 75000.00 lbs
						Initial Str Wt 49000.00 lbs
						Unseated Str Wt 49000.00 lbs
						Bot Choke 0.75 in
						Hole Size 7.88 in
						D Col. ID 2.25 in
						D. Pipe ID 3.80 in
						D.C. Length 0.00 ft
						D.P. Length 4593.00 ft

RECOVERY

Tot Fluid	20.00 ft of	0.00 ft in DC and	20.00 ft in DP
20.00	ft of Drilling Mud with oil spots in top of tool		
0.00	ft of 100% mud		
0.00	ft of		
0.00	ft of		
0.00	ft of		
0.00	ft of		
0.00	ft of		
0.00	ft of		
0.00	ft of		
SALINITY	0.00 P.P.M.	A.P.I. Gravity	0.00

BLOW DESCRIPTION

Initial Flow:  
 1/4" blow throughout.

Initial Shut-In:  
 No return.

Final Flow:  
 Bubble to open-No blow.

Final Shut-In:  
 No return.

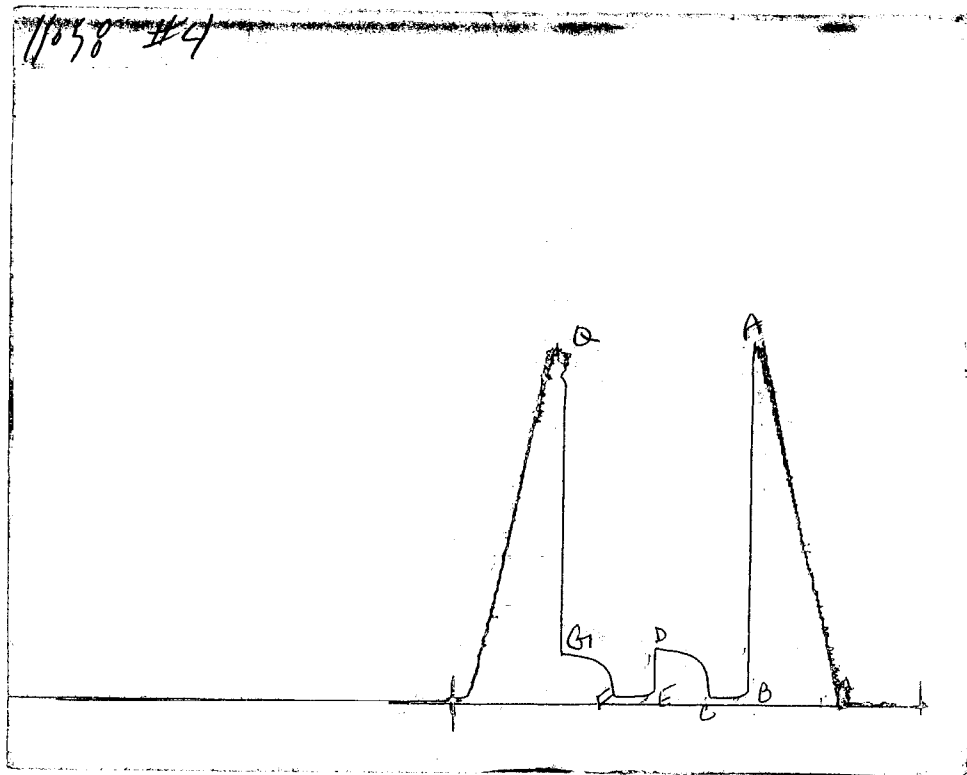
SAMPLES:  
 SENT TO:

MUD DATA-----

Mud Type	Chemical
Weight	9.50 lb/c
Vis.	54.00 S/L
W.L.	9.60 in3
F.C.	0.00 in
Mud Drop	
Amt. of fill	0.00 ft
Btm. H. Temp.	1130.00 F
Hole Condition	
% Porosity	0.00
Packer Size	6.75 in
No. of Packers	2
Cushion Amt.	0.00
Cushion Type	
Reversed Out	
Tool Chased	
Tester	Shane McBride
Co. Rep.	Roger Martin
Contr.	LD
Rig #	1
Unit #	
Pump T.	

Test Successful: Y

# CHART PAGE



This is a photocopy of the actual AK-1 recorder chart

# TRILOBITE TESTING L.L.C.

P.O. Box 362 • Hays, Kansas 67601

No 11194

## Test Ticket

API # 15-101-21779

Well Name & No. <u>Repshire A #3</u>	Test No. <u>4</u>	Date <u>3-6-00</u>
Company <u>Berexco Inc.</u>	Zone Tested <u>K</u>	
Address <u>100 N. Broadway, Suite 970, Wichita, Ks 67202</u>		Elevation <u>2675'</u> KB <u>2670'</u> GL
Co. Rep / Geo. <u>Roger Martin</u>	Cont. <u>L.D.</u>	Est. Ft. of Pay <u>    </u> Por. <u>    </u> %
Location: Sec. <u>23</u>	Twp. <u>17s</u>	Rge. <u>27w</u> Co. <u>LANC</u> State <u>Ks</u>
No. of Copies <u>Norm.</u>	Distribution Sheet (Y, N) <u>    </u>	Turnkey (Y, N) <u>    </u> Evaluation (Y, N) <u>    </u>

Interval Tested <u>Rotary 4227'-4263' / E-log 4231'-4267'</u>	Initial Str Wt./Lbs. <u>49,000</u>	Unseated Str Wt./Lbs. <u>49,000</u>
Anchor Length <u>36'</u>	Wt. Set Lbs. <u>36,000</u>	Wt. Pulled Loose/Lbs. <u>75,000</u>
Top Packer Depth <u>4222'-4227'</u> <u>4226'-4231'</u>	Tool Weight <u>10,000</u>	
Bottom Packer Depth <u>4263'</u> <u>4267'</u>	Hole Size — 7 7/8" <input checked="" type="checkbox"/>	Rubber Size — 6 3/4" <input checked="" type="checkbox"/>
Total Depth <u>RTD 4650'</u> <u>LTD 4654'</u>	Wt. Pipe Run <u>    </u>	Drill Collar Run <u>    </u>
Mud Wt. <u>9.5</u> LCM #1 Vis. <u>54</u> WL <u>9.6</u>	Drill Pipe Size <u>4 1/2 x 14</u>	Ft. Run <u>4593'</u>
Blow Description <u>1/4" in blow blew throughout</u>		
<u>No return</u>		
<u>Bubble to open - No blow</u>		
<u>No return</u>		

Recovery — Total Feet <u>20'</u>	GIP <u>    </u>	Ft. in DC <u>    </u>	Ft. in DP <u>20'</u>	
Rec. <u>20'</u> Feet Of <u>Drlg Mud (w/a</u>	%gas	%oil	%water <u>100%</u> %mud	
Rec. <u>    </u> Feet Of <u>few oil specks in</u>	%gas	%oil	%water	%mud
Rec. <u>    </u> Feet Of <u>top of tool)</u>	%gas	%oil	%water	%mud
Rec. <u>    </u> Feet Of <u>    </u>	%gas	%oil	%water	%mud
Rec. <u>    </u> Feet Of <u>    </u>	%gas	%oil	%water	%mud

BHT 113° °F Gravity      °API D@      °F Corrected Gravity      °API

RW      @      °F Chlorides      ppm Recovery Chlorides 3,200 ppm System

(A) Initial Hydrostatic Mud <u>2143</u> PSI	Recorder No. <u>10258</u>	T-Started <u>07:30 a.m.</u>
(B) First Initial Flow Pressure <u>44</u> PSI	(depth) <u>4237'</u>	T-Open <u>09:35 a.m.</u>
(C) First Final Flow Pressure <u>33</u> PSI	Recorder No. <u>11057</u>	T-Pulled <u>12:05 a.m.</u>
(D) Initial Shut-in Pressure <u>333</u> PSI	(depth) <u>4260'</u>	T-Out <u>14:05 p.m.</u>
(E) Second Initial Flow Pressure <u>44</u> PSI	Recorder No. <u>2023</u>	on loc <u>01:40 a.m.</u>
(F) Second Final Flow Pressure <u>33</u> PSI	(depth) <u><del>4267'</del> 4651'</u>	off loc <u>15:10 p.m.</u>
(G) Final Shut-in Pressure <u>288</u> PSI	Initial Opening <u>30</u>	Test <u>X</u>
(H) Final Hydrostatic Mud <u>2132</u> PSI	Initial Shut-in <u>45</u>	Jars <u>X</u>

Final Flow 30 Safety Joint X

Final Shut-in 45 Straddle X

Circ. Sub X N/C

Sampler     

Extra Packer X

Elect. Rec.     

Other     

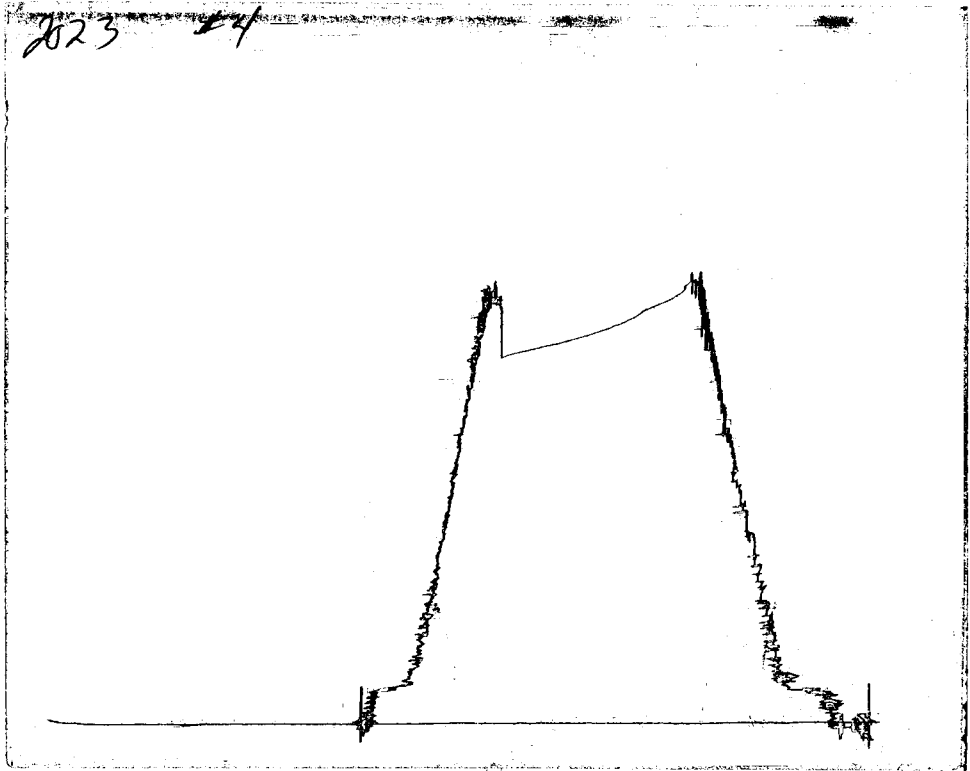
TOTAL PRICE \$     

TRILOBITE TESTING L.L.C. SHALL NOT BE LIABLE FOR DAMAGE OF ANY KIND OF THE PROPERTY OR PERSONNEL OF THE ONE FOR WHOM A TEST IS MADE, OR FOR ANY LOSS SUFFERED OR SUSTAINED, DIRECTLY OR INDIRECTLY, THROUGH THE USE OF ITS EQUIPMENT, OR ITS STATEMENTS OR OPINION CONCERNING THE RESULTS OF ANY TEST. TOOLS LOST OR DAMAGED IN THE HOLE SHALL BE PAID FOR AT COST BY THE PARTY FOR WHOM THE TEST IS MADE.

Approved By Roger L Martin

Our Representative Shirley M B...

# CHART PAGE



This is a photocopy of the actual AK-1 recorder chart