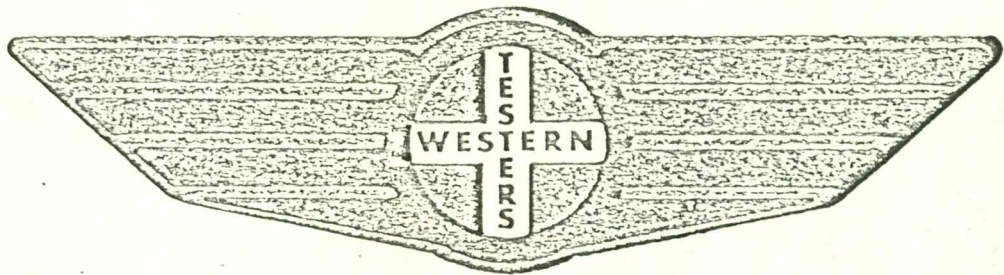


FORMATION

TEST

REPORT



Home Office:

Wichita, Kansas 67201

P.O. Box 1599

Phone (316) 262-5861

WESTERN TESTING CO. INC.
SUBSURFACE PRESSURE SURVEY

DATE: 9-26-85 TICKET #3635
 CUSTOMER: LANDMARK OIL EXPLORATION LEASE: HARLAMERT
 WELL: 1-29 TEST: 1 GEOLOGIST: S. (?)
 ELEVATION (KB): 2717 FORMATION: KANSAS CITY
 SECTION: 29 TOWNSHIP: 17S
 RANGE: 27W COUNTY: LANE STATE: KANSAS
 GAUGE SN #6074 RANGE: 5100 CLOCK: 12

INTERVAL TEST FROM: 4190 FT TO: 4302 FT TOTAL DEPTH: 4302 FT
 DEPTH OF SELECTIVE ZONE: FT
 PACKER DEPTH: 4185 FT SIZE: 6 3/4 IN PACKER DEPTH: 4190 FT SIZE: 6 3/4 IN
 PACKER DEPTH: FT SIZE: IN PACKER DEPTH: FT SIZE: IN

DRILLING CONTRACTOR: MURFIN DRLG. RIG #16
 MUD TYPE: STARCH VISCOSITY: 41
 WEIGHT: 9.5 WATER LOSS (CC): 8.4
 CHLORIDES (P.P.M.): 24000
 JARS - MAKE: SERIAL NUMBER:
 DID WELL FLOW? NO REVERSED OUT? NO
 DRILL COLLAR LENGTH: 120 FT I.D.: 2.25 IN
 WEIGHT PIPE LENGTH: FT I.D.: IN
 DRILL PIPE LENGTH: 4048 FT I.D.: 3.8 IN
 TEST TOOL LENGTH: 22 FT TOOL SIZE: 5 1/2 OD IN
 ANCHOR LENGTH: 112 FT SIZE: 5 1/2 OD IN
 SURFACE CHOKE SIZE: 3/4 IN BOTTOM CHOKE SIZE: 3/4 IN
 MAIN HOLE SIZE: 7 7/8 IN TOOL JOINT SIZE: 4 1/2 XH IN

BLOW: INITIAL FLOW PERIOD WEAL BLOW INCREASING
 TO FAIR BLOW; 10 INCHES IN BUCKET.
 FINAL FLOW PERIOD WEAK BLOW INCREASING
 TO FAIR BLOW; 8 INCHES IN BUCKET.

RECOVERED: 220 FT OF: MUD WITH FEW SPOTS OF OIL.
 RECOVERED: 60 FT OF: WATERY MUD.
 RECOVERED: FT OF: CHLORIDES 36000 PPM.
 RECOVERED: FT OF:
 RECOVERED: FT OF:
 RECOVERED: FT OF:
 RECOVERED: FT OF:
 RECOVERED: FT OF:
 RECOVERED: FT OF:

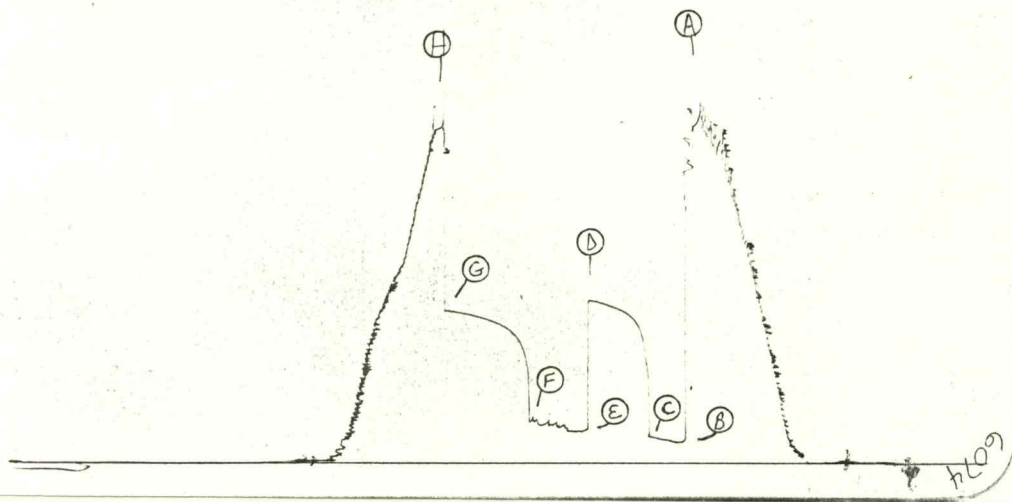
REMARKS: 94 FEET OF DRILL PIPE IN ANCHOR.

TIME SET PACKER(S): 6:15 AM TIME STARTED OFF BOTTOM: 9:15 AM
 WELL TEMPERATURE: 119 °F
 INITIAL HYDROSTATIC PRESSURE: (A) 2220 PSI
 INITIAL FLOW PERIOD MIN: 30 (B) 138 PSI TO (C) 174 PSI
 INITIAL CLOSED IN PERIOD MIN: 45 (D) 1071 PSI
 FINAL FLOW PERIOD MIN: 45 (E) 210 PSI TO (F) 275 PSI
 FINAL CLOSED IN PERIOD MIN: 63 (G) 1004 PSI
 FINAL HYDROSTATIC PRESSURE (H) 2199 PSI

top
0074

TKT # 3635

I

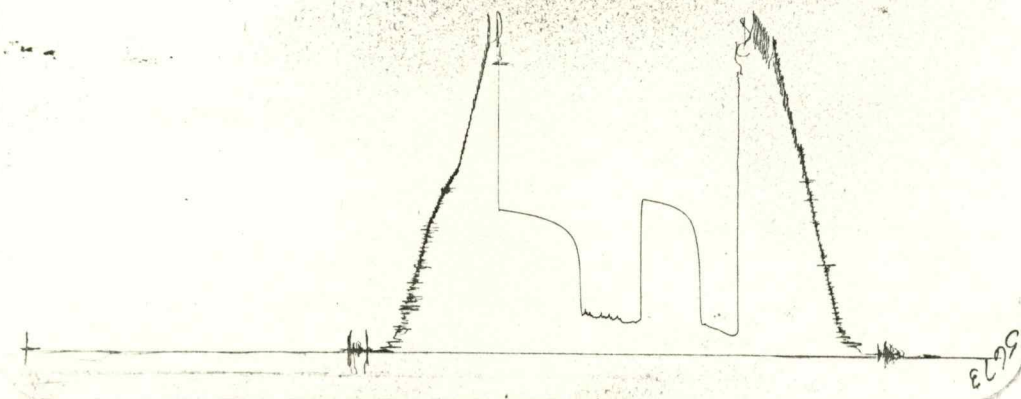


Inside Recorder

bottom
0073

TKT # 3635

O



Outside Recorder