



15-101-21881

DIAMOND TESTING
P.O. Box 157
HOISINGTON, KANSAS 67544
(620) 653-7550 • (800) 542-7313
STC 21083.D97

Company Mull Drilling Co., Inc. Lease & Well No. Reifschneider No. 1-28
Elevation 2718 KB Formation Lansing/Kansas City "A" - "C" Effective Pay -- Ft. Ticket No. J1687
Date 6-11-05 Sec. 28 Twp. 17S Range 28W County Lane State Kansas
Test Approved By Kevin L. Kessler Diamond Representative John C. Riedl

Formation Test No. 1 Interval Tested from 3,940 ft. to 3,995 ft. Total Depth 3,995 ft.
Packer Depth 3,935 ft. Size 6 3/4 in. Packer Depth -- ft. Size -- in.
Packer Depth 3,940 ft. Size 6 3/4 in. Packer Depth -- ft. Size -- in.
Depth of Selective Zone Set ft.

Top Recorder Depth (Inside) 3,943 ft. Recorder Number 21083 Cap. 5,000 psi
Bottom Recorder Depth (Outside) 3,992 ft. Recorder Number 11017 Cap. 3,900 psi
Below Straddle Recorder Depth ft. Recorder Number Cap. psi

Drilling Contractor Duke Drilling Co., Inc. - Rig 4 Drill Collar Length -- ft. I.D. -- in.
Mud Type Chemical Viscosity 46 Weight Pipe Length -- ft. I.D. -- in.
Weight 9.2 Water Loss 8.0 cc. Drill Pipe Length 3,920 ft. I.D. 3 1/2 in.
Chlorides 3,000 P.P.M. Test Tool Length 20 ft. Tool Size 3 1/2 - IF in.
Jars: Make Bowen Serial Number Not Run Anchor Length 55 ft. Size 4 1/2 - FH in.
Did Well Flow? No Reversed Out No Surface Choke Size 1 in. Bottom Choke Size 5/8 in.
Main Hole Size 7 7/8 in. Tool Joint Size 4 1/2 - XH in.

Blow: 1st Open: Weak surface blow throughout.
2nd Open: Weak blow. Dead in 15 mins.

Recovered 35 ft. of drilling mud with some oil specks = .497000 bbls.
Recovered ft. of
Recovered ft. of
Recovered ft. of
Recovered ft. of

Remarks

Time Set Packer(s) 6:25 AM. P.M. Time Started Off Bottom 10:05 AM. P.M. Maximum Temperature 117°
Initial Hydrostatic Pressure (A) 1919 P.S.I.
Initial Flow Period Minutes 10 (B) 20 P.S.I. to (C) 25 P.S.I.
Initial Closed In Period Minutes 30 (D) 1103 P.S.I.
Final Flow Period Minutes 60 (E) 26 P.S.I. to (F) 39 P.S.I.
Final Closed In Period Minutes 120 (G) 1041 P.S.I.
Final Hydrostatic Pressure (H) 1894 P.S.I.



DIAMOND TESTING
 P.O. Box 157
HOISINGTON, KANSAS 67544
 (620) 653-7550 • (800) 542-7313

FLUID SAMPLE DATA

Company Mull Drilling Co., Inc.
 Lease & Well No. Reifschneider No. 1-28
 Date 6-11-05 Sec. 28 Twp. 17 S Range 28 W
 Formation Test No. 1 Interval Tested From 3,940 ft. to 3,995 ft. Total Depth 3,995 ft.
 Formation Lansing/Kansas City "A" - "C"

	<u>MUD PIT</u>	<u>RECOVERY</u>
Viscosity	<u>46</u> CP	<u>58</u> CP
Weight	<u>9.2</u>	<u>9.3</u>
Water Loss	<u>8.0</u> CC	<u>6.0</u> CC
PH Factor	<u>11.5</u>	<u>11.0</u>

	<u>RESISTIVITY</u>	<u>CHLORIDE CONTENT</u>
Recovery Water	<u>-- @ -- °F.</u>	<u>-- ppm</u>
Recovery Mud	<u>-- @ -- °F.</u>	<u>-- ppm</u>
Recovery Mud Filtrate	<u>2.00 @ 65 °F.</u>	<u>3,500 ppm</u>
Mud Pit Sample	<u>-- @ -- °F.</u>	<u>-- ppm</u>
Mud Pit Sample Filtrate	<u>1.80 @ 72 °F.</u>	<u>3,300 ppm</u>

Sample Taken By JOHN C. RIEDL

Witness By KEVIN L. KESSLER

Remarks Pit filtrate triton dish chlorides were 3,000 Ppm
Recovery filtrate triton dish chlorides were 3,000 Ppm

GENERAL INFORMATION

Client Information:

Company: MULL DRILLING CO INC

Contact: ERNIE MORRISON

Phone: Fax: e-mail:

Site Information:

Contact: KEVIN KESSLER

Phone: Fax: e-mail:

Well Information:

Name: REIFSCHNEIDER #1-28

Operator: MULL DRILLING CO INC

Location-Downhole: DST #1 3940-3995

Location-Surface: S28/17S/28W LANE COUNTY

Test Information:

Company: DIAMOND TESTING

Representative: JOHN RIEDL

Supervisor: KEVIN KESSLER

Test Type: CONVENTIONAL

Job Number: D97

Test Unit: 2

Start Date: 2005/06/11

Start Time: 04:44:00

End Date: 2005/06/11

End Time: 11:59:00

Report Date: 2005/06/11

Prepared By: JOHN RIEDL

Remarks:

Qualified By: KEVIN KESSLER

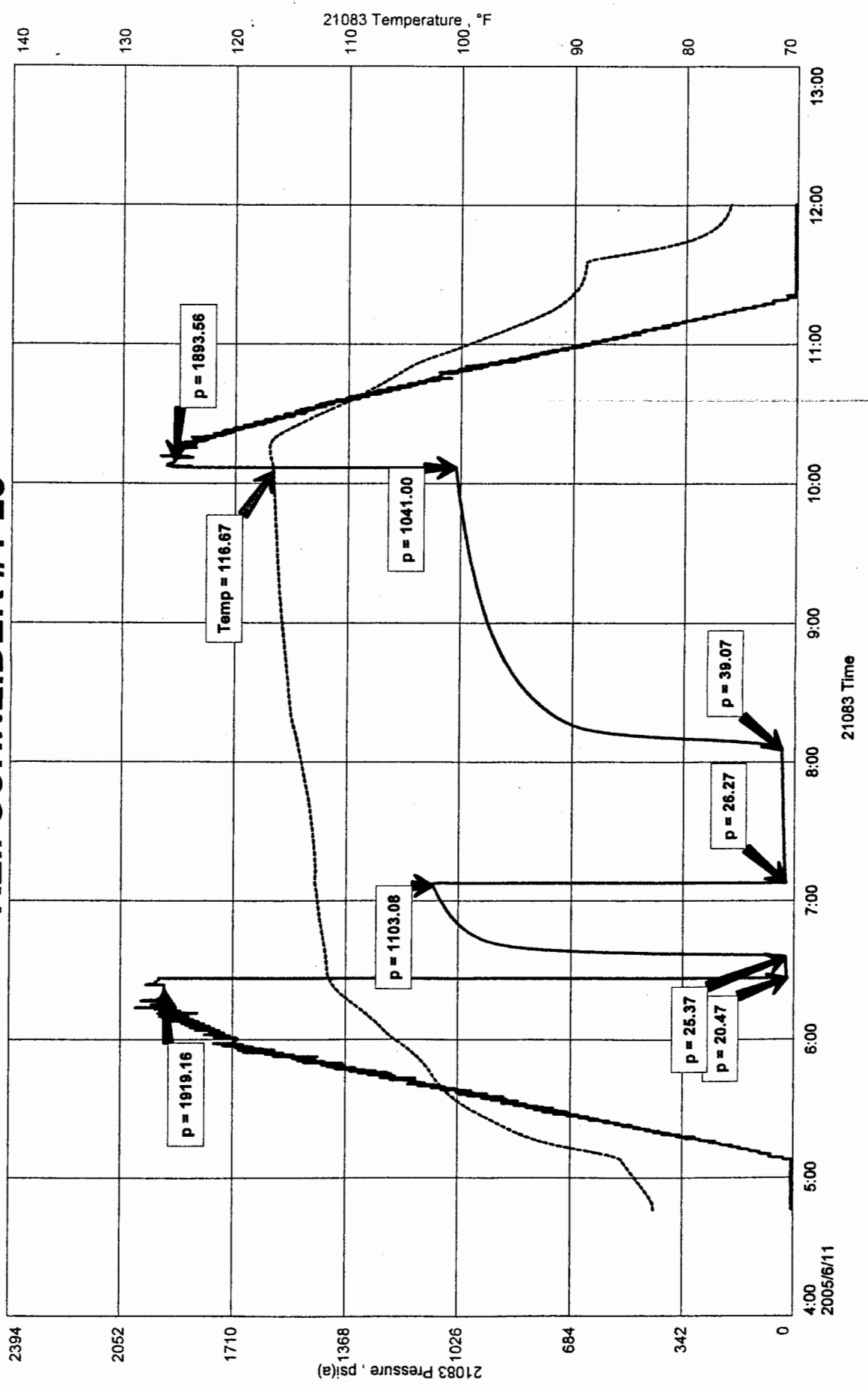
RECOVERY: 35' DRILLING MUD *WITH OIL SPECKS*



REIFSCHNEIDER #1-28
 Formation: LKC "A-C"
 Job Number: D97

MULL DRILLING CO INC
 DST #1 3940-3995
 Start Test Date: 2005/06/11
 Final Test Date: 2005/06/11

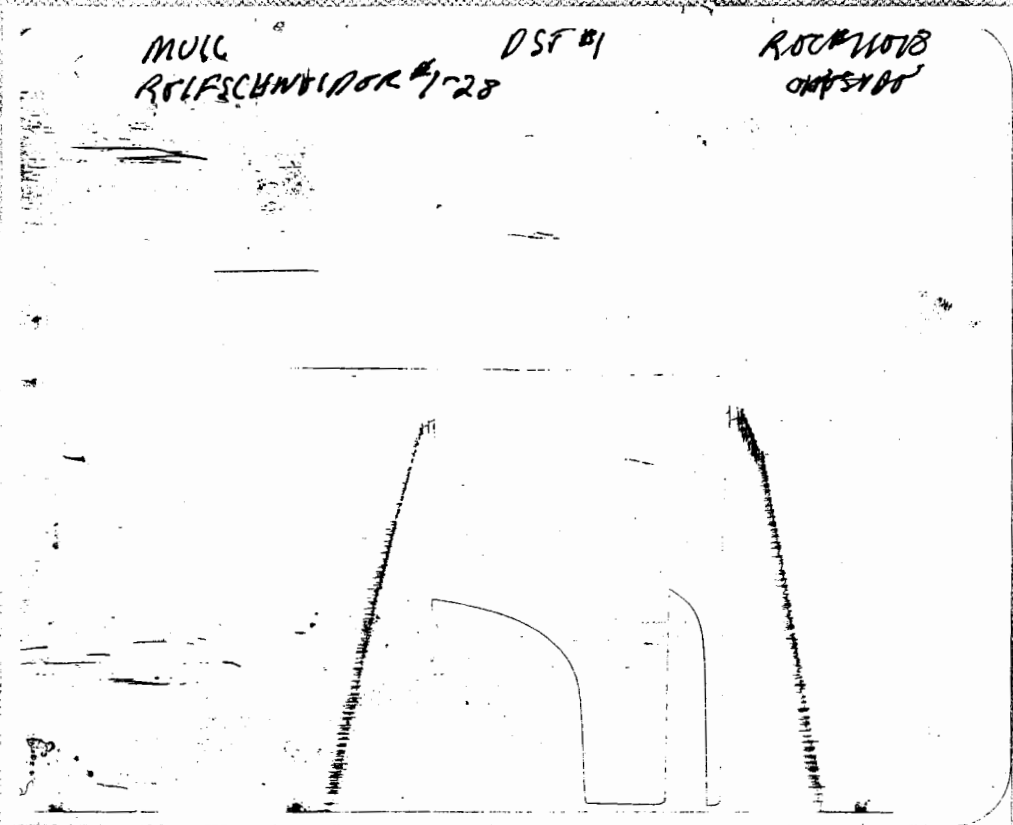
REIFSCHNEIDER #1-28



MULL
ROLFSCHNITTDR #128

DSF #1

ROCK #11018
CHP 5/85





DIAMOND TESTING

P.O. Box 157
HOISINGTON, KANSAS 67544
(620) 653-7550 • (800) 542-7313
STC 21098.D124

Company Mull Drilling Co., Inc. Lease & Well No. Reifschneider No. 1-28
Elevation 2718 KB Formation Lansing/Kansas City "H" - "I" Effective Pay -- Ft. Ticket No. 2013
Date 6-13-05 Sec. 28 Twp. 17S Range 28W County Lane State Kansas
Test Approved By Kevin L. Kessler Diamond Representative Roger D. Friedly

Formation Test No. 2 Interval Tested from 4,105 ft. to 4,170 ft. Total Depth 4,170 ft.
Packer Depth 4,100 ft. Size 6 3/4 in. Packer Depth -- ft. Size -- in.
Packer Depth 4,105 ft. Size 6 3/4 in. Packer Depth -- ft. Size -- in.
Depth of Selective Zone Set ft.

Top Recorder Depth (Inside) 4,093 ft. Recorder Number 21098 Cap. 5,000 psi
Bottom Recorder Depth (Outside) 4,167 ft. Recorder Number 13387 Cap. 4,000 psi
Below Straddle Recorder Depth ft. Recorder Number Cap. psi

Drilling Contractor Duke Drilling Co., Inc. - Rig 4 Drill Collar Length -- ft. I.D. -- in.
Mud Type Chemical Viscosity 42 Weight Pipe Length -- ft. I.D. -- in.
Weight 9.3 Water Loss 8.8 cc. Drill Pipe Length 4,080 ft. I.D. 3 1/2 in.
Chlorides 4,600 P.P.M. Test Tool Length 25 ft. Tool Size 3 1/2 - IE in.
Jars: Make Bowen Serial Number Not Run Anchor Length 34' perf. w/ 31' drill pipe Size 4 1/2 - FH in.
Did Well Flow? No Reversed Out Yes Surface Choke Size 1 in. Bottom Choke Size 5/8 in.
Main Hole Size 7 7/8 in. Tool Joint Size 4 1/2 - XH in.

Blow: 1st Open: Strong blow. Off bottom of bucket in 2 mins. Weak surface blow back during shut-in.
2nd Open: Strong blow. Off bottom of bucket in 3 mins. Fair, 1 1/2 in., blow back during shut-in.

Recovered 430 ft. of gas in pipe
Recovered 1,617 ft. of TOTAL FLUID = 22.961400 bbls. (SEE ATTACHED SHEET.)
Recovered ft. of
Recovered ft. of
Recovered ft. of
Remarks Tool Sample Grind Out: 10%-gas; 20%-mud; 30%-oil; 40%-water

Time Set Packer(s) 12:38 ~~P.M.~~ ^{A.M.} Time Started Off Bottom 4:18 ~~P.M.~~ ^{A.M.} Maximum Temperature 127°
Initial Hydrostatic Pressure (A) 2015 P.S.I.
Initial Flow Period Minutes 10 (B) 70 P.S.I. to (C) 214 P.S.I.
Initial Closed In Period Minutes 30 (D) 1081 P.S.I.
Final Flow Period Minutes 60 (E) 228 P.S.I. to (F) 686 P.S.I.
Final Closed In Period Minutes 120 (G) 1065 P.S.I.
Final Hydrostatic Pressure (H) 2011 P.S.I.



DIAMOND TESTING
P. O. Box 157
HOISINGTON, KANSAS 67544
(800) 542-7313

FLUID SAMPLE DATA

Company Mull Drilling Co., Inc.

Lease & Well No. Reifschneider No. 1-28

Date 6-13-05 Sec. 28 Twp. 17 S Range 28 W

Formation Test No. 2 Interval Tested From 4,105 ft. to 4,170 ft. Total Depth 4,170 ft.

Formation Lansing/Kansas City "H" - "I"

	<u>MUD PIT</u>	<u>RECOVERY</u>	<u>RECOVERY</u>
Viscosity	<u>42</u> CP	<u>--</u> CP	
Weight	<u>9.3</u>	<u>--</u>	
Water Loss	<u>8.8</u> CC	<u>--</u> CC	
PH Factor	<u>10.5</u>	<u>--</u>	<u>Water</u> <u>7.0</u>

	<u>RESISTIVITY</u>	<u>CHLORIDE CONTENT</u>
Recovery Water	<u>.13 @ 76 °F.</u>	<u>50,000 ppm</u>
Recovery Mud	<u>-- @ -- °F.</u>	<u>-- ppm</u>
Recovery Mud Filtrate	<u>-- @ -- °F.</u>	<u>-- ppm</u>
Mud Pit Sample	<u>1.30 @ 58 °F.</u>	<u>5,800 ppm</u>
Mud Pit Sample Filtrate	<u>1.40 @ 60 °F.</u>	<u>5,000 ppm</u>

Sample Taken By ROGER D. FRIEDLY

Witness By KEVIN L. KESSLER

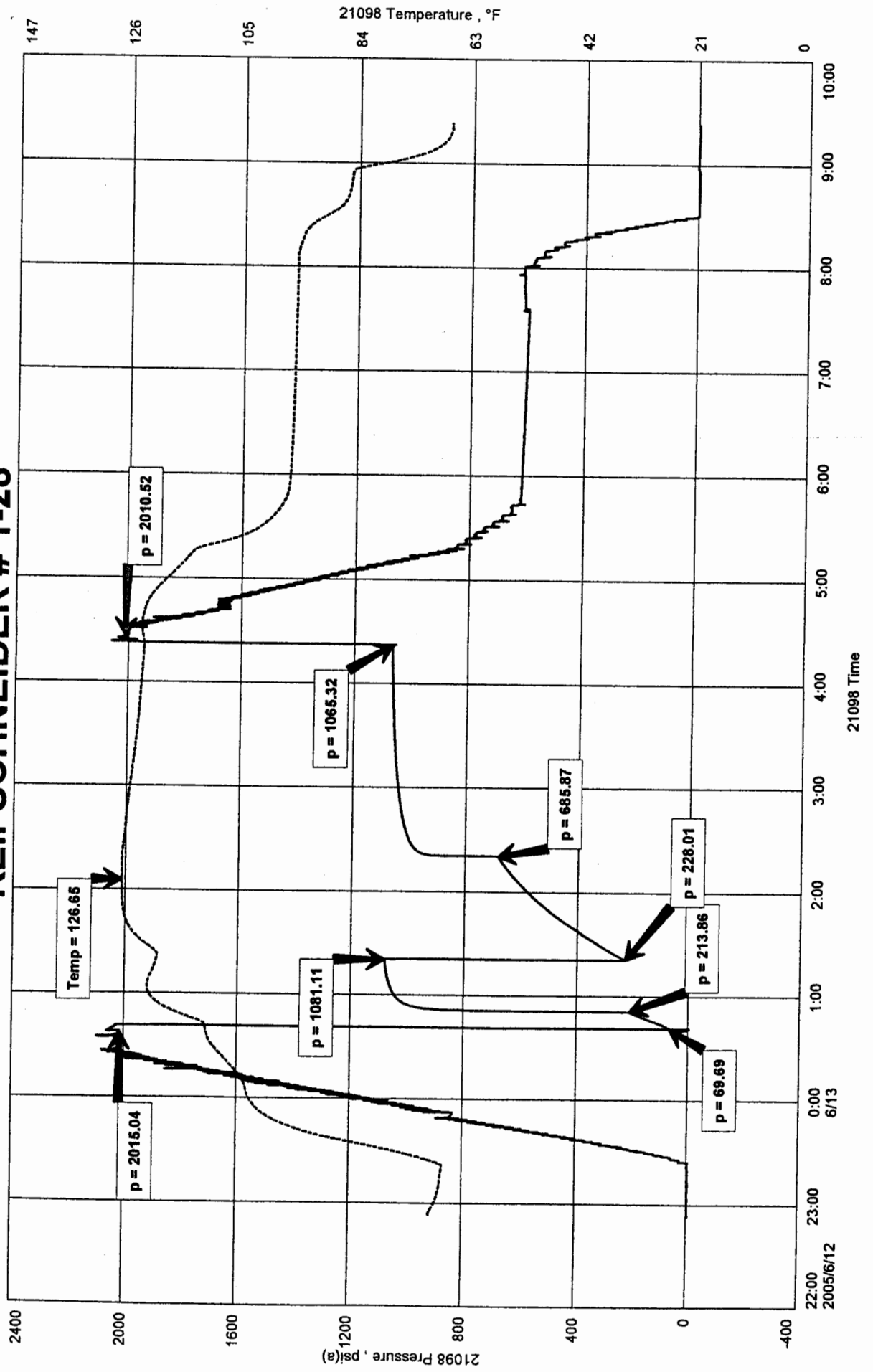
Remarks Pit filtrate triton dish chlorides were 4,600 Ppm
Recovery water dish chlorides were 41,000 Ppm

NUMBER OF FEET	PERCENT GAS	PERCENT OIL	PERCENT WATER	PERCENT EMULSION	PERCENT MUD	PERCENT TOTAL
129	8	49	24	0	19	100
248	12	58	26	0	4	100
558	7	54	28	0	11	100
310	6	43	35	0	16	100
248	2	38	40	0	20	100
62	0	0	50	0	50	100
62	0	0	80	0	20	100
1617 TOTAL RECOVERY						

MULL DRILLING COMPANY, INC
 DST #2 LKC 'H-I' 4,105' - 4,170
 Start Test Date: 2005/06/12
 Final Test Date: 2005/06/13

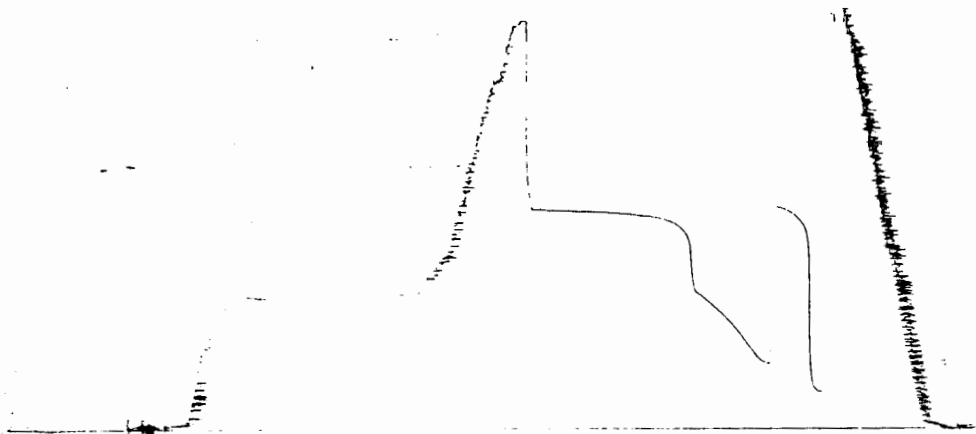
REIFSCHNEIDER # 1-28
 Formation: DST #2 LKC 'H-I' 4,105' - 4,170
 Pool: WILDCAT

REIFSCHNEIDER # 1-28



DST # 269.77ka 13387
LXC # I

4105-4170
LOC 4167





DIAMOND TESTING

P.O. Box 157
HOISINGTON, KANSAS 67544
(620) 653-7550 • (800) 542-7313
STC 21098.D125

Page 1 of 3 Pages

Company Mull Drilling Co., Inc. Lease & Well No. Reifschneider No. 1-28
Elevation 2718 KB Formation Lansing/Kansas City "J" Effective Pay -- Ft. Ticket No. 2014
Date 6-13-05 Sec. 28 Twp. 17S Range 28W County Lane State Kansas
Test Approved By Kevin L. Kessler Diamond Representative Roger D. Friedly

Formation Test No. 3 Interval Tested from 4,175 ft. to 4,190 ft. Total Depth 4,190 ft.
Packer Depth 4,170 ft. Size 6 3/4 in. Packer Depth -- ft. Size -- in.
Packer Depth 4,175 ft. Size 6 3/4 in. Packer Depth -- ft. Size -- in.
Depth of Selective Zone Set ft.

Top Recorder Depth (Inside) 4,163 ft. Recorder Number 21098 Cap. 5,000 psi
Bottom Recorder Depth (Outside) 4,187 ft. Recorder Number 13387 Cap. 4,000 psi
Below Straddle Recorder Depth ft. Recorder Number Cap. psi

Drilling Contractor Duke Drilling Co., Inc. - Rig 4 Drill Collar Length -- ft. I.D. -- in.
Mud Type Chemical Viscosity 52 Weight Pipe Length -- ft. I.D. -- in.
Weight 9.5 Water Loss 8.8 cc. Drill Pipe Length 4,150 ft. I.D. 3 1/2 in.
Chlorides 4,400 P.P.M. Test Tool Length 25 ft. Tool Size 3 1/2 - IE in.
Jars: Make Bowen Serial Number Not Run Anchor Length 15 ft. Size 4 1/2 - FH in.
Did Well Flow? No Reversed Out No Surface Choke Size 1 in. Bottom Choke Size 5/8 in.
Main Hole Size 7 7/8 in. Tool Joint Size 4 1/2 - XH in.

Blow: 1st Open: Weak surface blow. Increasing to 1/2 in. No blow back during shut-in.
2nd Open: No blow.

Recovered 15 ft. of drilling mud (good gassy odor & a few oil specks) = .213000 bbls.
Recovered ft. of
Recovered ft. of
Recovered ft. of
Recovered ft. of
Remarks Tool Sample Grind Out: 2%-oil; 98%-mud

Time Set Packer(s) 6:04 ~~AM~~ P.M. Time Started Off Bottom 10:34 ~~AM~~ P.M. Maximum Temperature 117°
Initial Hydrostatic Pressure (A) 2050 P.S.I.
Initial Flow Period Minutes 30 (B) 7 P.S.I. to (C) 10 P.S.I.
Initial Closed In Period Minutes 60 (D) 821 P.S.I.
Final Flow Period Minutes 60 (E) 10 P.S.I. to (F) 16 P.S.I.
Final Closed In Period Minutes 120 (G) 799 P.S.I.
Final Hydrostatic Pressure (H) 2041 P.S.I.



DIAMOND TESTING
P. O. Box 157
HOISINGTON, KANSAS 67544
(800) 542-7313

FLUID SAMPLE DATA

Company Mull Drilling Co., Inc.

Lease & Well No. Reifschneider No. 1-28

Date 6-13-05 Sec. 28 Twp. 17 S Range 28 W

Formation Test No. 3 Interval Tested From 4,175 ft. to 4,190 ft. Total Depth 4,190 ft.

Formation Lansing/Kansas City "J"

	<u>MUD PIT</u>	<u>RECOVERY</u>
Viscosity	<u>52</u> CP	<u>56</u> CP
Weight	<u>9.5</u>	<u>9.4</u>
Water Loss	<u>8.8</u> CC	<u>8.8</u> CC
PH Factor	<u>10.5</u>	<u>10.5</u>

	<u>RESISTIVITY</u>	<u>CHLORIDE CONTENT</u>
Recovery Water	<u>-- @ -- °F.</u>	<u>-- ppm</u>
Recovery Mud	<u>1.30 @ 58 °F.</u>	<u>5,600 ppm</u>
Recovery Mud Filtrate	<u>1.40 @ 59 °F.</u>	<u>5,200 ppm</u>
Mud Pit Sample	<u>1.40 @ 62 °F.</u>	<u>5,200 ppm</u>
Mud Pit Sample Filtrate	<u>1.50 @ 60 °F.</u>	<u>4,800 ppm</u>

Sample Taken By ROGER D. FRIEDLY

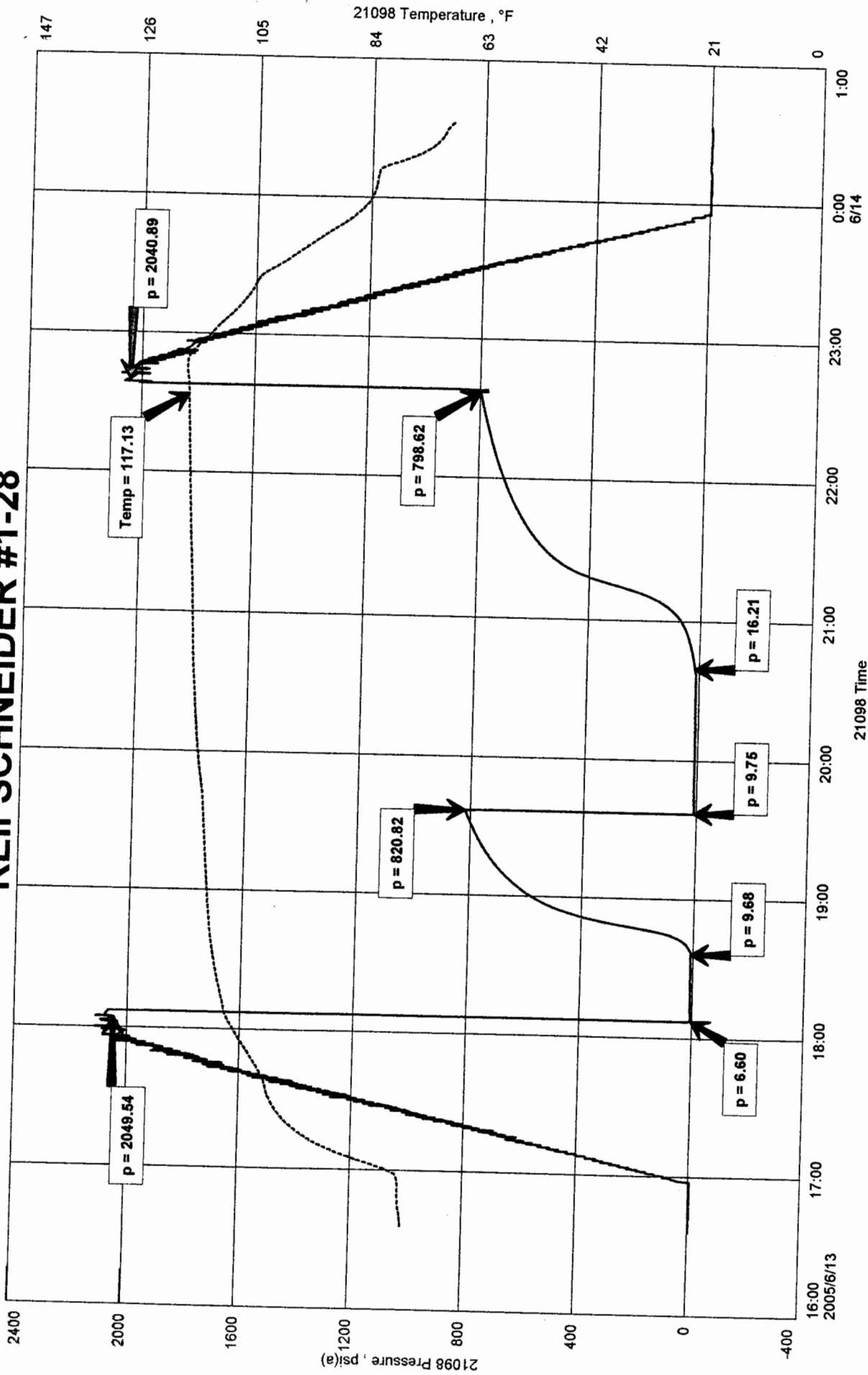
Witness By KEVIN L. KESSLER

Remarks Pit filtrate triton dish chlorides were 4,400 Ppm
Recovery filtrate triton dish chlorides were 4,600 Ppm

MULL DRILLING COMPANY, INC.
 DST #3 LKC 'J' 4,175' - 4,190'
 Start Test Date: 2005/06/13
 Final Test Date: 2005/06/14

REIFSCHNEIDER #1-28
 Formation: DST #3 LKC 'J' 4,175' - 4,190'
 Pool: WILDCAT

REIFSCHNEIDER #1-28



GENERAL INFORMATION

Client Information:

Company: MULL DRILLING COMPANY, INC.
Contact: ERNIE MORRISON
Phone: Fax: e-mail:

Site Information:

Contact: KEVIN KESSLER
Phone: Fax: e-mail:

Well Information:

Name: REIFSCHNEIDER #1-28
Operator: MULL DRILLING COMPANY, INC.
Location-Downhole: DST #3 LKC 'J' 4,175' - 4,190'
Location-Surface: SEC 28-17S-28W LANE COUNTY

Test Information:

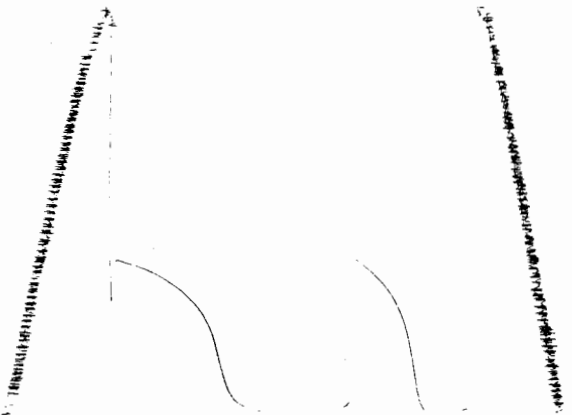
Company: DIAMOND TESTING
Representative: ROGER D. FRIEDLY
Supervisor: KEVIN KESSLER
Test Type: CONVENTIONAL Job Number:
Test Unit: NO. 1
Start Date: 2005/06/13 Start Time: 16:33:00
End Date: 2005/06/14 End Time: 00:30:00
Report Date: Prepared By:
Remarks: Qualified By:

RECOVERED: 15' DRILLING MUD - GOOD GASSY ODOR - WITH A FEW OIL SPECKS

TOOL SAMPLE: 2% OIL, 98% MUD

DST # 3 outside. 13387
LKC J

4175-4190
LOC 4189





DIAMOND TESTING

P.O. Box 157

HOISINGTON, KANSAS 67544

(620) 653-7550 • (800) 542-7313

STC 21098.D126

Company Mull Drilling Co., Inc. Lease & Well No. Reifschneider No. 1-28

Elevation 2718 KB Formation Lansing/Kansas City "K" Effective Pay -- Ft. Ticket No. 2015

Date 6-14-05 Sec. 28 Twp. 17S Range 28W County Lane State Kansas

Test Approved By Kevin L. Kessler Diamond Representative Roger D. Friedly

Formation Test No. 4 Interval Tested from 4,195 ft. to 4,225 ft. Total Depth 4,225 ft.

Packer Depth 4,190 ft. Size 6 3/4 in. Packer Depth -- ft. Size -- in.

Packer Depth 4,195 ft. Size 6 3/4 in. Packer Depth -- ft. Size -- in.

Depth of Selective Zone Set -- ft.

Top Recorder Depth (Inside) 4,183 ft. Recorder Number 21098 Cap. 5,000 psi

Bottom Recorder Depth (Outside) 4,222 ft. Recorder Number 13387 Cap. 4,000 psi

Below Straddle Recorder Depth -- ft. Recorder Number -- Cap. -- psi

Drilling Contractor Duke Drilling Co., Inc. - Rig 4 Drill Collar Length -- ft. I.D. -- in.

Mud Type Chemical Viscosity 52 Weight Pipe Length -- ft. I.D. -- in.

Weight 9.4 Water Loss 8.0 cc. Drill Pipe Length 4,170 ft. I.D. 3 1/2 in.

Chlorides 4,400 P.P.M. Test Tool Length 25 ft. Tool Size 3 1/2 - IF in.

Jars: Make Bowen Serial Number Not Run Anchor Length 30 ft. Size 4 1/2 - FH in.

Did Well Flow? No Reversed Out No Surface Choke Size 1 in. Bottom Choke Size 5/8 in.

Main Hole Size 7 7/8 in. Tool Joint Size 4 1/2 - XH in.

Blow: 1st Open: Weak, 1/2 in., blow. Increasing to 10 ins. Weak surface blow back during shut-in.

2nd Open: Weak, 1/2 in., blow increasing. Off bottom of bucket in 21 3/4 mins.

Recovered 200 ft. of gas in pipe

Recovered 46 ft. of clean oil = .653200 bbls. (Gravity: 36 @ 60°)

Recovered 93 ft. of slightly oil cut muddy water = 1.320600 bbls. (Grind out: 2%-oil; 38%-mud; 60%-water)

Recovered 186 ft. of muddy water with a trace of oil = 2.641200 bbls. (Grind out: 9%-mud; 91%-water)

Recovered 325 ft. of TOTAL FLUID = 4.615000 bbls.

Remarks Tool Sample Grind Out: 1%-mud; 4%-oil; 95%-water

Time Set Packer(s) 11:04 ~~AM.~~ PM. Time Started Off Bottom 2:49 ~~AM.~~ PM. Maximum Temperature 125°

Initial Hydrostatic Pressure (A) 2042 P.S.I.

Initial Flow Period Minutes 15 (B) 7 P.S.I. to (C) 48 P.S.I.

Initial Closed In Period Minutes 30 (D) 1107 P.S.I.

Final Flow Period Minutes 60 (E) 53 P.S.I. to (F) 154 P.S.I.

Final Closed In Period Minutes 120 (G) 1103 P.S.I.

Final Hydrostatic Pressure (H) 2041 P.S.I.



DIAMOND TESTING
 P. O. Box 157
 HOISINGTON, KANSAS 67544
 (800) 542-7313

Page 2 of 3 Pages

FLUID SAMPLE DATA

Company Mull Drilling Co., Inc.

Lease & Well No. Reifschneider No. 1-28

Date 6-14-05 Sec. 28 Twp. 17 S Range 28 W

Formation Test No. 4 Interval Tested From 4,195 ft. to 4,225 ft. Total Depth 4,225 ft.

Formation Lansing/Kansas City "K"

	<u>MUD PIT</u>	<u>RECOVERY</u>	<u>RECOVERY</u>
Viscosity	<u>52</u> CP	<u>--</u> CP	
Weight	<u>9.4</u>	<u>--</u>	
Water Loss	<u>8.0</u> CC	<u>--</u> CC	
PH Factor	<u>10.5</u>	<u>--</u>	<u>Water</u> <u>7.0</u>

	<u>RESISTIVITY</u>	<u>CHLORIDE</u> <u>CONTENT</u>
Recovery Water	<u>.13 @ 89 °F.</u>	<u>44,000 ppm</u>
Recovery Mud	<u>-- @ -- °F.</u>	<u>-- ppm</u>
Recovery Mud Filtrate	<u>-- @ -- °F.</u>	<u>-- ppm</u>
Mud Pit Sample	<u>1.10 @ 82 °F.</u>	<u>4,600 ppm</u>
Mud Pit Sample Filtrate	<u>1.05 @ 90 °F.</u>	<u>4,500 ppm</u>

Sample Taken By ROGER D. FRIEDLY

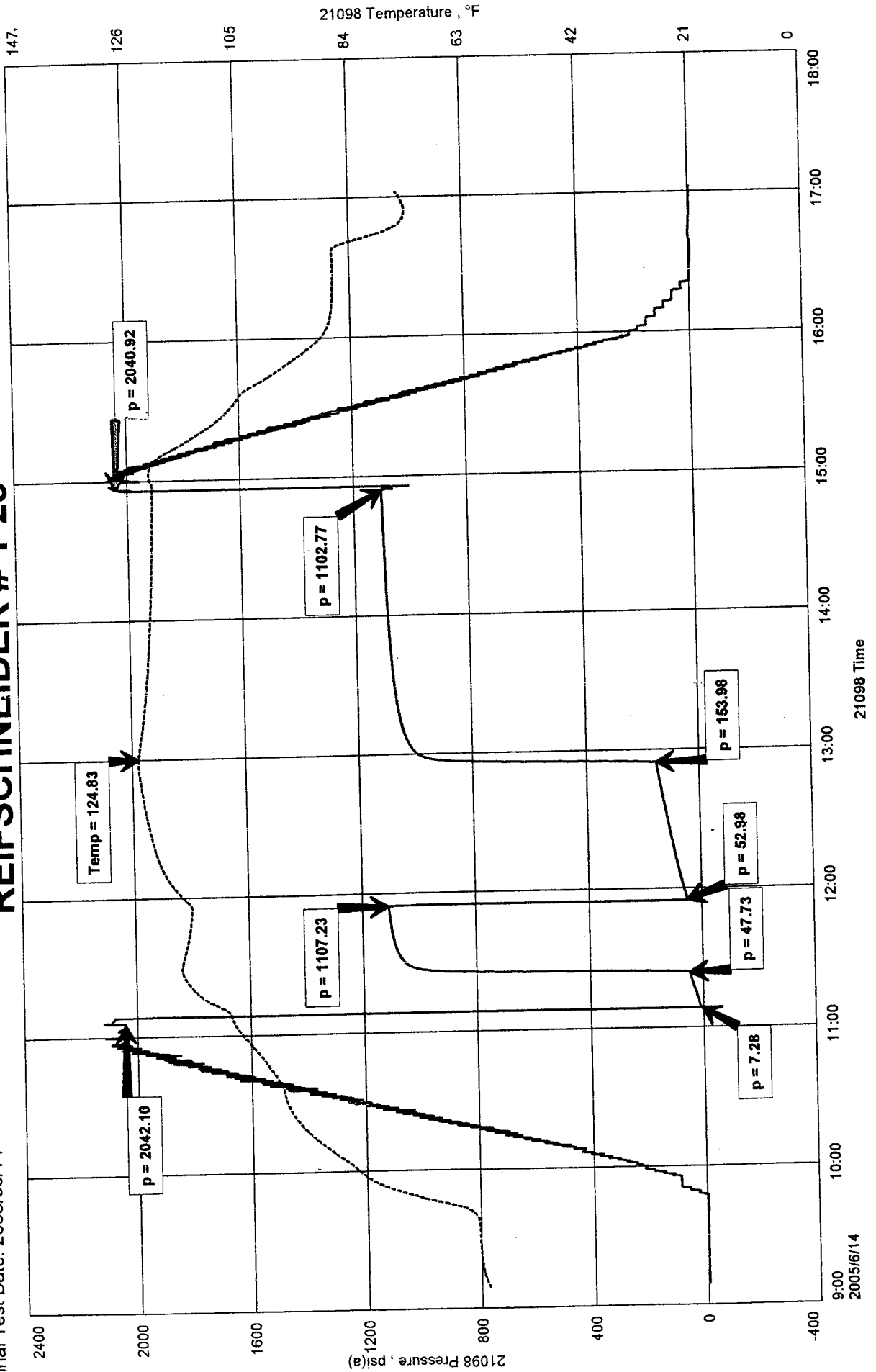
Witness By KEVIN L. KESSLER

Remarks Pit filtrate triton dish chlorides were 4,400 Ppm
Recovery water dish chlorides were 42,000 Ppm

REIFSCHNEIDER # 1-28
Formation: DST #4 LKC 'K' 4,195' - 4,225'
Pool: WILDCAT

MULL DRILLING COMPANY, INC.
DST #4 LKC 'K' 4,195' - 4,225'
Start Test Date: 2005/06/14
Final Test Date: 2005/06/14

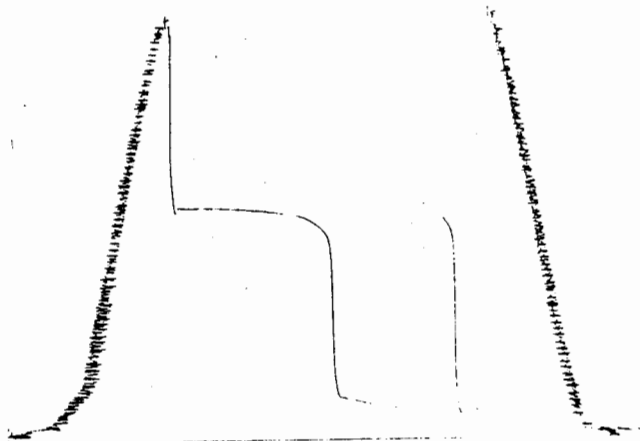
REIFSCHNEIDER # 1-28



RECEIVED

DST# 4 outside 13387
LKC 'K'

W 175-4225
Loc 4222





DIAMOND TESTING

P.O. Box 157

HOISINGTON, KANSAS 67544

(620) 653-7550 • (800) 542-7313

STC 21098.D127

Company Mull Drilling Co., Inc. Lease & Well No. Reifschneider No. 1-28

Elevation 2718 KB Formation Middle Creek Effective Pay Ft. Ticket No. 2016

Date 6-15-05 Sec. 28 Twp. 17S Range 28W County Lane State Kansas

Test Approved By Kevin L. Kessler Diamond Representative Roger D. Friedly

Formation Test No. 5 Interval Tested from 4,223 ft. to 4,240 ft. Total Depth 4,240 ft.

Packer Depth 4,218 ft. Size 6 3/4 in. Packer Depth ft. Size in.

Packer Depth 4,223 ft. Size 6 3/4 in. Packer Depth ft. Size in.

Depth of Selective Zone Set ft.

Top Recorder Depth (Inside) 4,211 ft. Recorder Number 21098 Cap. 5,000 psi

Bottom Recorder Depth (Outside) 4,237 ft. Recorder Number 13387 Cap. 4,000 psi

Below Straddle Recorder Depth ft. Recorder Number Cap. psi

Drilling Contractor Duke Drilling Co., Inc. - Rig 4 Drill Collar Length ft. I.D. in.

Mud Type Chemical Viscosity 49 Weight Pipe Length ft. I.D. in.

Weight 9.4 Water Loss 8.0 cc. Drill Pipe Length 4,198 ft. I.D. 3 1/2 in.

Chlorides 4,400 P.P.M. Test Tool Length 25 ft. Tool Size 3 1/2 - IF in.

Jars: Make Bowen Serial Number Not Run Anchor Length 17 ft. Size 4 1/2 - FH in.

Did Well Flow? No Reversed Out No Surface Choke Size 1 in. Bottom Choke Size 5/8 in.

Main Hole Size 7 7/8 in. Tool Joint Size 4 1/2 - XH in.

Blow: 1st Open: Weak, 1/2 in., blow increasing to 9 1/2 ins. Weak surface blow back during shut-in.

2nd Open: Weak, 1/2 in., blow increasing. Off bottom of bucket in 25 mins. Weak surface blow back during shut-in.

Recovered 156 ft. of gas in pipe

Recovered 77 ft. of clean oil = 1.093400 bbls. (Gravity: 34 @ 60°)

Recovered 46 ft. of gas & water cut muddy oil = .653200 bbls. (Grind out: 2%-gas; 21%-water; 35%-mud; 42%-oil)

Recovered 31 ft. of slightly oil cut muddy water = .440200 bbls. (Grind out: 4%-oil; 29%-mud; 67%-water)

Recovered 154 ft. of TOTAL FLUID = 2.186800 bbls.

Remarks Tool Sample Grind Out: 4%-gas; 27%-mud; 28%-water; 41%-oil

Time Set Packer(s) 12:49 ~~P.M.~~ A.M. Time Started Off Bottom 4:29 ~~P.M.~~ A.M. Maximum Temperature 121°

Initial Hydrostatic Pressure (A) 2056 P.S.I.

Initial Flow Period Minutes 10 (B) 8 P.S.I. to (C) 25 P.S.I.

Initial Closed In Period Minutes 30 (D) 715 P.S.I.

Final Flow Period Minutes 60 (E) 31 P.S.I. to (F) 68 P.S.I.

Final Closed In Period Minutes 120 (G) 470 P.S.I.

Final Hydrostatic Pressure (H) 2050 P.S.I.



DIAMOND TESTING
P. O. Box 157
HOISINGTON, KANSAS 67544
(800) 542-7313

Page 2 of 3 Pages

FLUID SAMPLE DATA

Company Mull Drilling Co., Inc.

Lease & Well No. Reifschneider No. 1-28

Date 6-15-05 Sec. 28 Twp. 17 S Range 28 W

Formation Test No. 5 Interval Tested From 4,223 ft. to 4,240 ft. Total Depth 4,240 ft.

Formation Middle Creek

	MUD PIT	RECOVERY	RECOVERY
Viscosity	<u>49</u> CP	<u>--</u> CP	
Weight	<u>9.4</u>	<u>--</u>	
Water Loss	<u>8.0</u> CC	<u>--</u> CC	
PH Factor	<u>10.5</u>	<u>--</u>	<u>7.0</u> Water

	RESISTIVITY	CHLORIDE CONTENT
Recovery Water	<u>.23 @ 60 °F.</u>	<u>37,000</u> ppm
Recovery Mud	<u>-- @ -- °F.</u>	<u>--</u> ppm
Recovery Mud Filtrate	<u>-- @ -- °F.</u>	<u>--</u> ppm
Mud Pit Sample	<u>1.30 @ 58 °F.</u>	<u>5,200</u> ppm
Mud Pit Sample Filtrate	<u>1.50 @ 56 °F.</u>	<u>4,900</u> ppm

Sample Taken By ROGER D. FRIEDLY

Witness By KEVIN L. KESSLER

Remarks Pit filtrate triton dish chlorides were 4,400 Ppm
Recovery water dish chlorides were 38,500 Ppm

GENERAL INFORMATION

Client Information:

Company: MULL DRILLING COMPANY, INC.
Contact: ERNIE MORRISON
Phone: Fax: e-mail:

Site Information:

Contact: KEVIN KESSLER
Phone: Fax: e-mail:

Well Information:

Name: REIF SCHNEIDER #1-28
Operator: MULL DRILLING COMPANY, INC.
Location-Downhole: DST #5 MIDDLE CREEK 4,223' - 4,240'
Location-Surface: SEC 28-17S-28W LANE COUNTY

Test Information:

Company: DIAMOND TESTING
Representative: ROGER D. FRIEDLY
Supervisor: KEVIN KESSLER
Test Type: CONVENTIONAL Job Number:
Test Unit: NO. 1
Start Date: 2005/06/14 Start Time: 23:13:00
End Date: 2005/06/15 End Time: 06:49:00
Report Date: Prepared By:
Remarks: Qualified By:

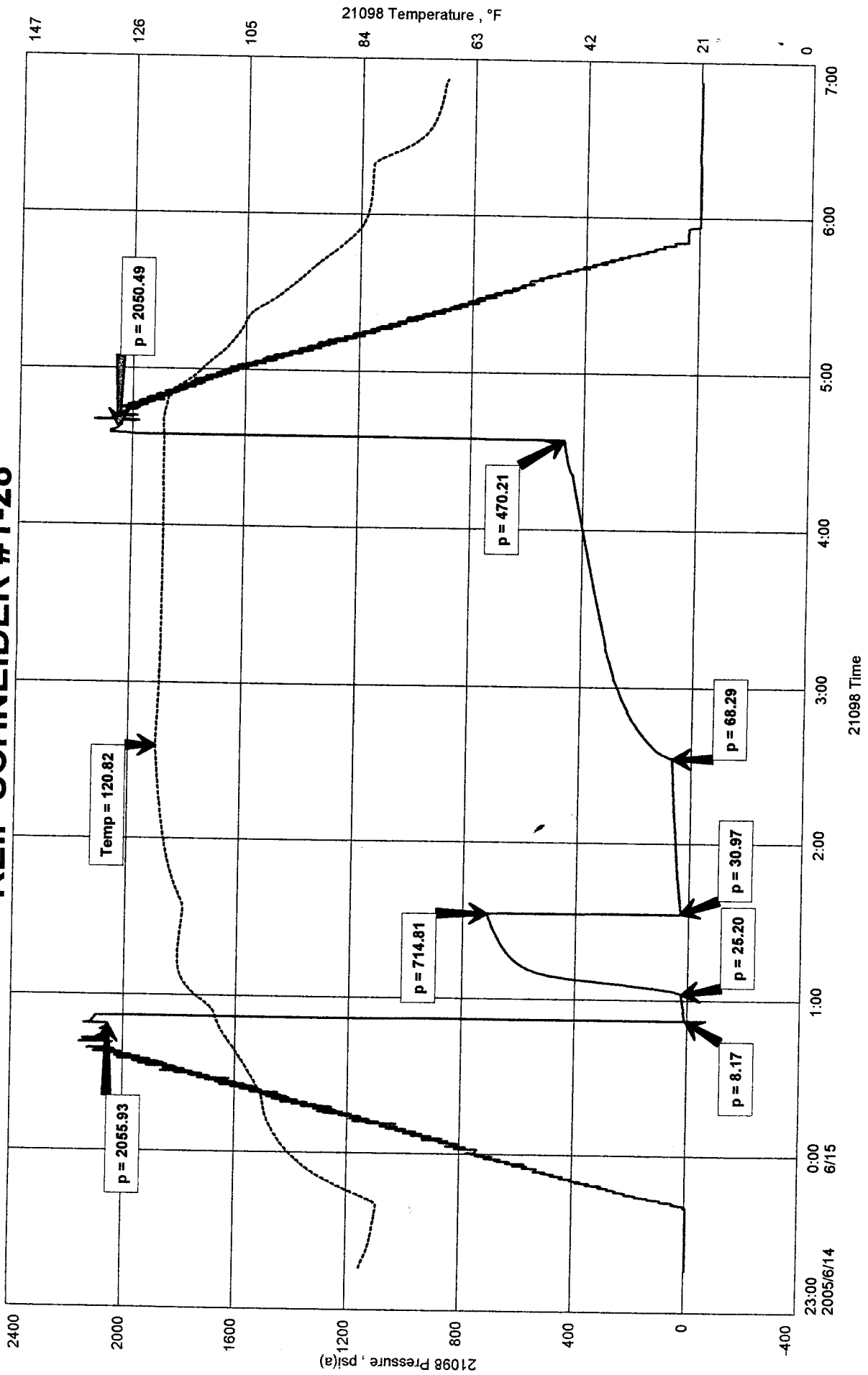
RECOVERED: 156' GAS IN PIPE
77' CLEAN OIL
46' G&WCMO 2% GAS, 21% WTR, 35% MUD, 42% OIL
31' SLTOCMW 4% OIL, 29%, 67% WTR
154' TOTAL FLUID

TOOL SAMPLE: 4% GAS, 27% MUD, 28%WTR, 41% OIL

MULL DRILLING COMPANY, INC.
DST #5 MIDDLE CREEK 4,223' - 4,240'
Start Test Date: 2005/06/14
Final Test Date: 2005/06/15

REIF SCHNEIDER #1-28
Formation: DST #5 MIDDLE CREEK 4,223' - 4,240'
Pool: WILDCAT

REIF SCHNEIDER #1-28



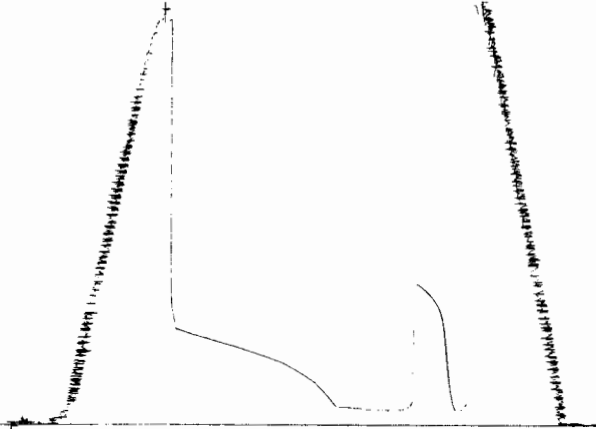
RECEIVED

DST # 5 outside • 13387

Middle Creek

4223 - 4240

Loc 4237





DIAMOND TESTING

P.O. Box 157
HOISINGTON, KANSAS 67544
(620) 653-7550 • (800) 542-7313
STC 21098.D128

Company Mull Drilling Co., Inc. Lease & Well No. Reifschneider No. 1-28
Elevation 2718 KB Formation Marmaton Effective Pay Ft. Ticket No. 2017
Date 6-16-05 Sec. 28 Twp. 17S Range 28W County Lane State Kansas

Test Approved By Kevin L. Kessler Diamond Representative Roger D. Friedly

Formation Test No. 6 Interval Tested from 4,275 ft. to 4,380 ft. Total Depth 4,380 ft.

Packer Depth 4,270 ft. Size 6 3/4 in. Packer Depth ft. Size in.

Packer Depth 4,275 ft. Size 6 3/4 in. Packer Depth ft. Size in.

Depth of Selective Zone Set ft.

Top Recorder Depth (Inside) 4,263 ft. Recorder Number 21098 Cap. 5,000 psi

Bottom Recorder Depth (Outside) 4,377 ft. Recorder Number 13387 Cap. 4,000 psi

Below Straddle Recorder Depth ft. Recorder Number Cap. psi

Drilling Contractor Duke Drilling Co., Inc. - Rig 4 Drill Collar Length ft. I.D. in.

Mud Type Chemical Viscosity 58 Weight Pipe Length ft. I.D. in.

Weight 9.5 Water Loss 7.2 cc. Drill Pipe Length 4,250 ft. I.D. 3 1/2 in.

Chlorides 4,200 P.P.M. Test Tool Length 25 ft. Tool Size 3 1/2 - JF in.

Jars: Make Bowen Serial Number Not Run Anchor Length 43' perf. w/ 62' drill pipe Size 4 1/2 - FH in.

Did Well Flow? No Reversed Out Yes Surface Choke Size 1 in. Bottom Choke Size 5/8 in.

Main Hole Size 7 7/8 in. Tool Joint Size 4 1/2 - XH in.

Blow: 1st Open: Strong blow. Off bottom of bucket in 1 1/2 mins. Strong blow back during shut-in.

2nd Open: Strong blow. Off bottom of bucket in 45 secs. Strong blow back during shut-in.

Recovered 1,953 ft. of gas in pipe

Recovered 1,333 ft. of clean oil = 18.928600 bbls. (Grind out: 2%-gas; 98%-oil) Gravity: 34.6 @ 60°

Recovered 62 ft. of below circulating sub gas cut muddy oil = .880400 bbls. (Grind out: 14%-gas; 41%-mud; 45%-oil)

Recovered 62 ft. of gas cut muddy oil = .880400 bbls. (Grind out: 22%-gas; 35%-mud; 43%-oil)

Recovered 1,457 ft. of TOTAL FLUID = 20.689400 bbls.

Remarks Last sample into truck: 2%-gas; 46%-mud; 52%-oil

Tool Sample grind Out: 2%-gas; 98%-oil (trace of water - .25)

Time Set Packer(s) 2:39 A.M. Time Started Off Bottom 4:49 P.M. Maximum Temperature 129°

Initial Hydrostatic Pressure (A) 2107 P.S.I.

Initial Flow Period Minutes 10 (B) 120 P.S.I. to (C) 229 P.S.I.

Initial Closed In Period Minutes 30 (D) 1151 P.S.I.

Final Flow Period Minutes 30 (E) 261 P.S.I. to (F) 547 P.S.I.

Final Closed In Period Minutes 60 (G) 1035 P.S.I.

Final Hydrostatic Pressure (H) 2105 P.S.I.



DIAMOND TESTING
P. O. Box 157
HOISINGTON, KANSAS 67544
(800) 542-7313

Page 2 of 3 Pages

FLUID SAMPLE DATA

Company Mull Drilling Co., Inc.

Lease & Well No. Reifschneider No. 1-28

Date 6-16-05 Sec. 28 Twp. 17 S Range 28 W

Formation Test No. 6 Interval Tested From 4,275 ft. to 4,380 ft. Total Depth 4,380 ft.

Formation Marmaton

	<u>MUD PIT</u>	<u>RECOVERY</u>
Viscosity	<u>58</u> CP	<u>--</u> CP
Weight	<u>9.5</u>	<u>--</u>
Water Loss	<u>7.2</u> CC	<u>--</u> CC
PH Factor	<u>10.5</u>	<u>--</u>

	<u>RESISTIVITY</u>	<u>CHLORIDE CONTENT</u>
Recovery Water	<u>-- @ -- °F.</u>	<u>--</u> ppm
Recovery Mud	<u>-- @ -- °F.</u>	<u>--</u> ppm
Recovery Mud Filtrate	<u>-- @ -- °F.</u>	<u>--</u> ppm
Mud Pit Sample	<u>1.35 @ 58 °F.</u>	<u>5,400</u> ppm
Mud Pit Sample Filtrate	<u>1.45 @ 60 °F.</u>	<u>4,800</u> ppm

Sample Taken By ROGER D. FRIEDLY

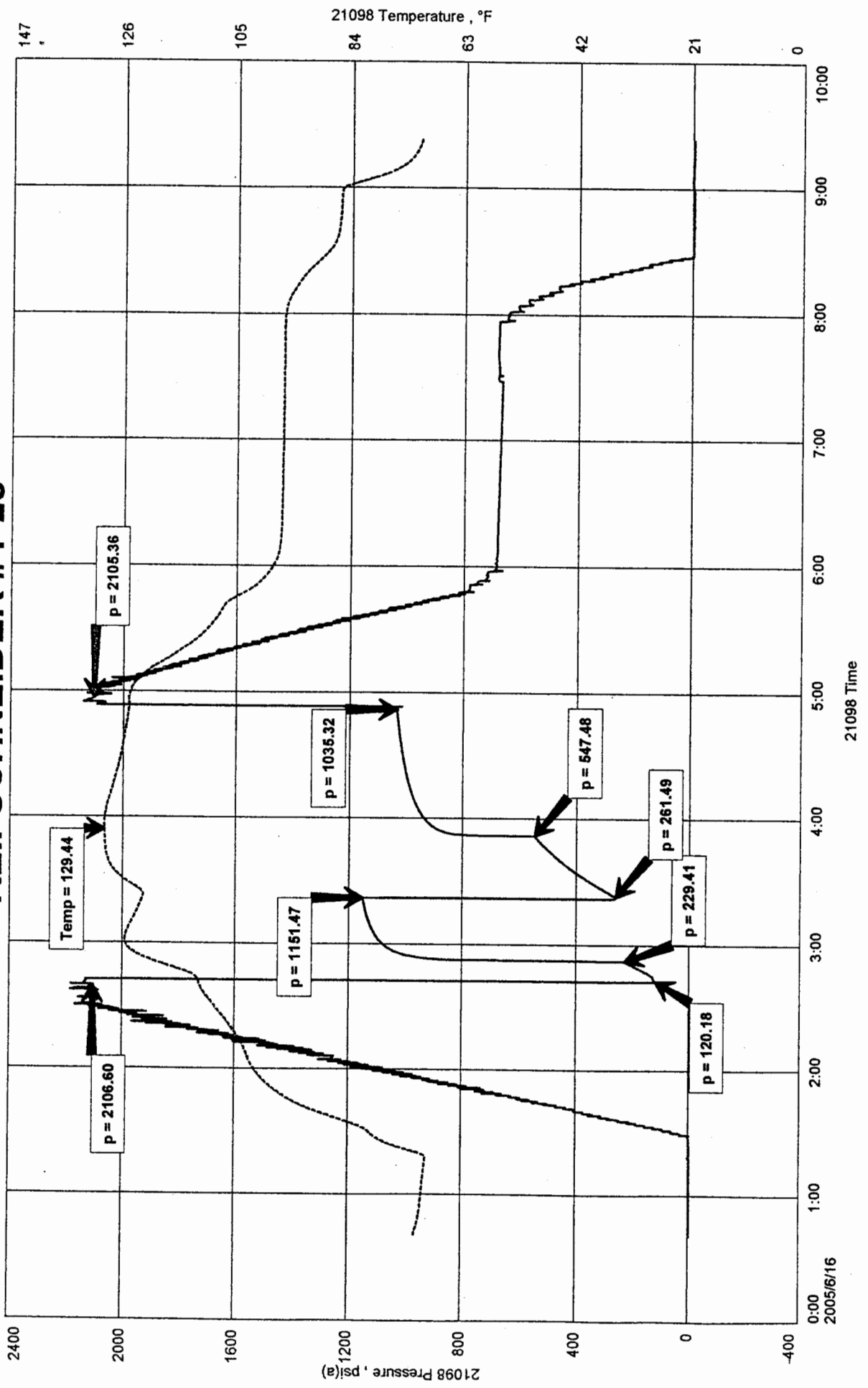
Witness By KEVIN L. KESSLER

Remarks Pit filtrate triton dish chlorides were 4,200 Ppm

REIFSCHNEIDER #1-28
 Formation: DST #6 MARMATON 4,275' - 4,380'
 Pool: WILDCAT

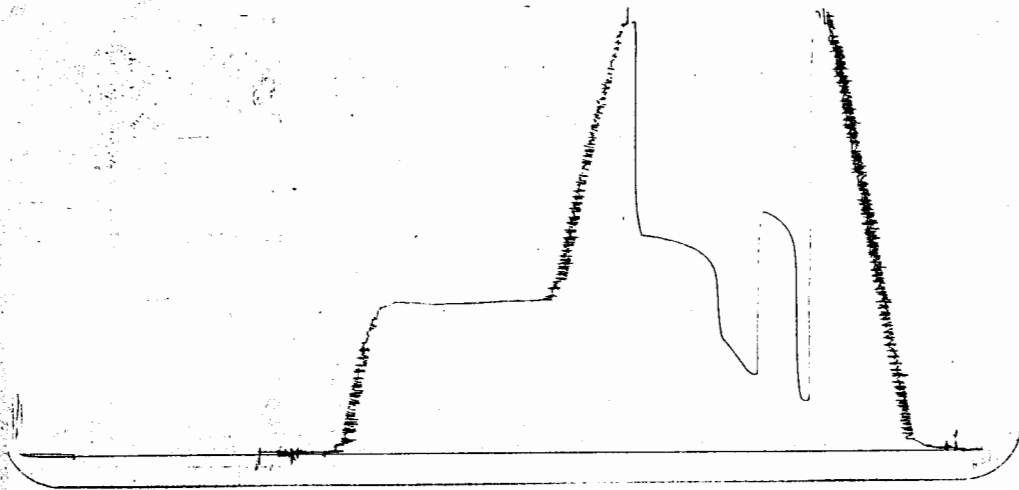
MULL DRILLING COMPANY, INC.
 DST #6 MARMATON 4,275' - 4,380'
 Start Test Date: 2005/06/16
 Final Test Date: 2005/06/16

REIFSCHNEIDER #1-28



DST # L outside 13387
Marmaton

4275-4380





DIAMOND TESTING

P.O. Box 157
HOISINGTON, KANSAS 67544
(620) 653-7550 • (800) 542-7313
STC 21098.D129

Company Mull Drilling Co., Inc. Lease & Well No. Reifschneider No. 1-28
Elevation 2718 KB Formation Altamont/Fort Scott Effective Pay -- Ft. Ticket No. 2018
Date 6-17-05 Sec. 28 Twp. 17S Range 28W County Lane State Kansas

Test Approved By Kevin L. Kessler Diamond Representative Roger D. Friedly

Formation Test No. 7 Interval Tested from 4,385 ft. to 4,470 ft. Total Depth 4,470 ft.
Packer Depth 4,380 ft. Size 6 3/4 in. Packer Depth -- ft. Size -- in.
Packer Depth 4,385 ft. Size 6 3/4 in. Packer Depth -- ft. Size -- in.

Depth of Selective Zone Set ft.

Top Recorder Depth (Inside) 4,373 ft. Recorder Number 21098 Cap. 5,000 psi
Bottom Recorder Depth (Outside) 4,467 ft. Recorder Number 13387 Cap. 4,000 psi
Below Straddle Recorder Depth ft. Recorder Number Cap. psi

Drilling Contractor Duke Drilling Co., Inc. - Rig 4 Drill Collar Length -- ft. I.D. -- in.
Mud Type Chemical Viscosity 56 Weight Pipe Length -- ft. I.D. -- in.
Weight 9.4 Water Loss 8.0 cc. Drill Pipe Length 4,360 ft. I.D. 3 1/2 in.
Chlorides 4,600 P.P.M. Test Tool Length 25 ft. Tool Size 3 1/2 - IE in.
Jars: Make Bowen Serial Number Not Run Anchor Length 23' perf. w/ 62' drill pipe Size 4 1/2 - FH in.
Did Well Flow? No Reversed Out No Surface Choke Size 1 in. Bottom Choke Size 5/8 in.
Main Hole Size 7 7/8 in. Tool Joint Size 4 1/2 - XH in.

Blow: 1st Open: Weak surface blow. Increasing to 1 1/2 ins. No blow back during shut-in.
2nd Open: Fair, 2 in., blow increasing. Off bottom of bucket in 60 mins. No blow back during shut-in.

Recovered 223 ft. of gas in pipe
Recovered 1 ft. of clean oil = .014200 bbls. (Gravity: 36.8 @ 60°)
Recovered 24 ft. of gas cut oily mud = .340800 bbls. (Grind out: 2%-gas; 46%-oil; 52%-mud)
Recovered 25 ft. of TOTAL FLUID = .355000 bbls.
Recovered ft. of
Remarks Tool Sample Grind Out: 3%-gas; 43%-mud; 54%-oil

Time Set Packer(s) 1:51 A.M. P.M. Time Started Off Bottom 5:31 A.M. P.M. Maximum Temperature 120°
Initial Hydrostatic Pressure (A) 2138 P.S.I.
Initial Flow Period Minutes 10 (B) 7 P.S.I. to (C) 10 P.S.I.
Initial Closed In Period Minutes 30 (D) 938 P.S.I.
Final Flow Period Minutes 60 (E) 9 P.S.I. to (F) 18 P.S.I.
Final Closed In Period Minutes 120 (G) 1248 P.S.I.
Final Hydrostatic Pressure (H) 2133 P.S.I.



DIAMOND TESTING
P. O. Box 157
HOISINGTON, KANSAS 67544
(800) 542-7313

FLUID SAMPLE DATA

Company Mull Drilling Co., Inc.

Lease & Well No. Reifschneider No. 1-28

Date 6-17-05 Sec. 28 Twp. 17 S Range 28 W

Formation Test No. 7 Interval Tested From 4,385 ft. to 4,470 ft. Total Depth 4,470 ft.

Formation Altamont/Fort Scott

	<u>MUD PIT</u>	<u>RECOVERY</u>
Viscosity	<u>56</u> CP	<u>--</u> CP
Weight	<u>9.4</u>	<u>--</u>
Water Loss	<u>8.0</u> CC	<u>--</u> CC
PH Factor	<u>10.5</u>	<u>--</u>

	<u>RESISTIVITY</u>	<u>CHLORIDE CONTENT</u>
Recovery Water	<u>-- @ -- °F.</u>	<u>--</u> ppm
Recovery Mud	<u>-- @ -- °F.</u>	<u>--</u> ppm
Recovery Mud Filtrate	<u>-- @ -- °F.</u>	<u>--</u> ppm
Mud Pit Sample	<u>1.35 @ 56 °F.</u>	<u>5,900</u> ppm
Mud Pit Sample Filtrate	<u>1.40 @ 58 °F.</u>	<u>5,200</u> ppm

Sample Taken By ROGER D. FRIEDLY

Witness By KEVIN L. KESSLER

Remarks Pit filtrate triton dish chlorides were 4,600 Ppm

GENERAL INFORMATION

Client Information:

Company: MULL DRILLING COMPANY, INC.
Contact: ERNIE MORRISON
Phone: Fax: e-mail:

Site Information:

Contact: KEVIN KESSLER
Phone: Fax: e-mail:

Well Information:

Name: REIFSCHNEIDER #1-28
Operator: MULL DRILLING COMPANY, INC.
Location-Downhole: DST #7 ALTAMONT/FT SCOTT 4,385' - 4,470'
Location-Surface: SEC 28-17S-28W LANE COUNTY

Test Information:

Company: DIAMOND TESTING
Representative: ROGER D. FRIEDLY
Supervisor: KEVIN KESSLER
Test Type: CONVENTIONAL Job Number:
Test Unit: NO. 1
Start Date: 2005/06/16 Start Time: 23:41:00
End Date: 2005/06/17 End Time: 07:51:00
Report Date: Prepared By:
Remarks: Qualified By:

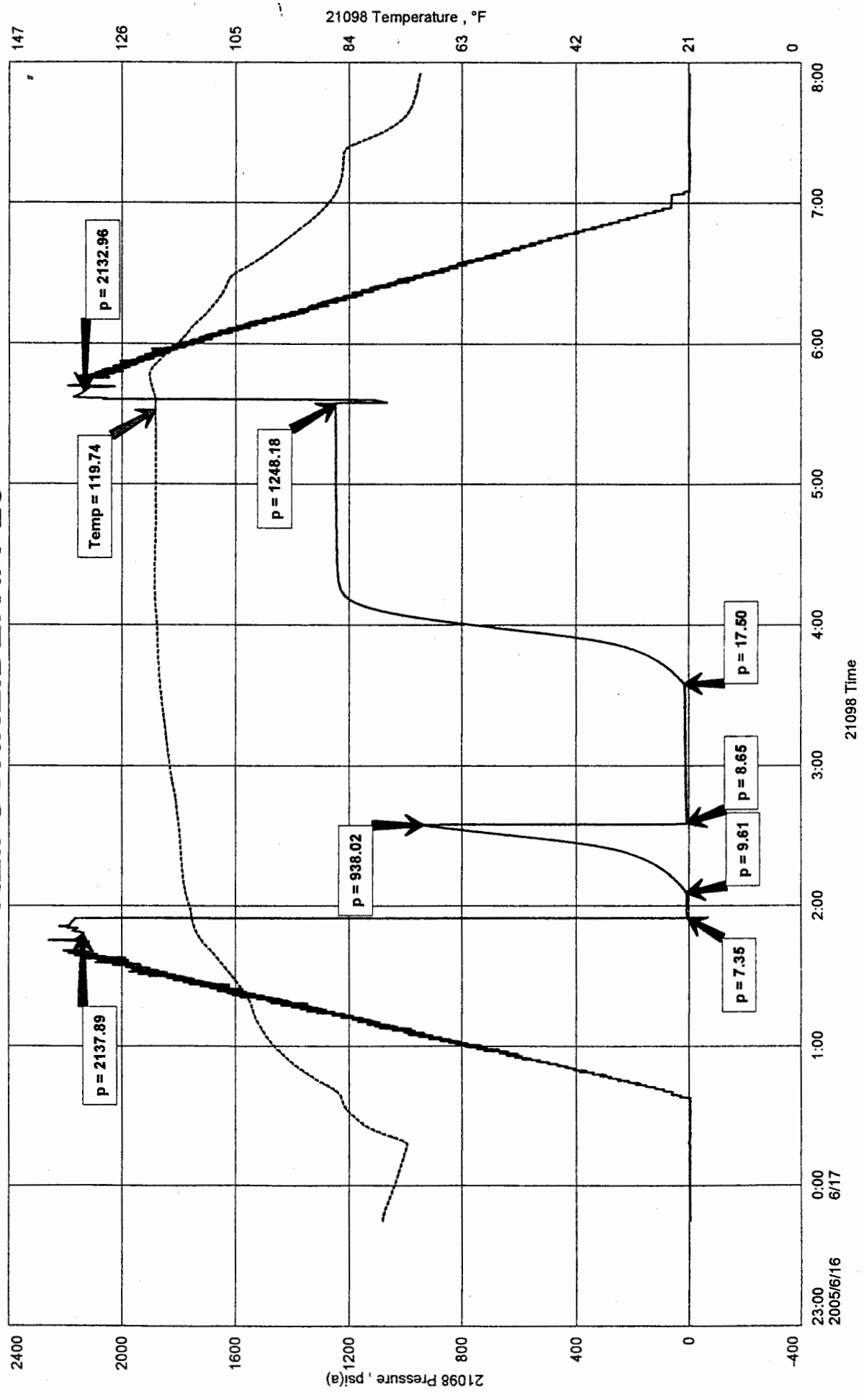
RECOVERED: 223' GAS IN PIPE
1' CLEAN OIL 36.8 GRAVITY @ 60 deg.
24' GCOM 2% GAS, 46% OIL, 52% MUD
25' TOTAL FLUID

TOOL SAMPLE: 3% GAS, 43% MUD, 54% OIL

MULL DRILLING COMPANY, INC.
 DST #7 ALTAMONT/FT SCOTT 4,385' - 4,470'
 Start Test Date: 2005/06/16
 Final Test Date: 2005/06/17

REIFSCHNEIDER #1-28
 Formation: DST #7 ALTAMONT/FT SCOTT 4,385' - 4,470'
 Pool: WILDCAT

REIFSCHNEIDER #1-28





DIAMOND TESTING

P.O. Box 157
HOISINGTON, KANSAS 67544
(620) 653-7550 • (800) 542-7313
STC 21098.D130

Company Mull Drilling Co., Inc. Lease & Well No. Reifschneider No. 1-28
Elevation 2718 KB Formation Cherokee/Johnson Effective Pay -- Ft. Ticket No. 2019
Date 6-17-05 Sec. 28 Twp. 17S Range 28W County Lane State Kansas
Test Approved By Kevin L. Kessler Diamond Representative Roger D. Friedly

Formation Test No. 8 Interval Tested from 4,473 ft. to 4,543 ft. Total Depth 4,543 ft.
Packer Depth 4,468 ft. Size 6 3/4 in. Packer Depth -- ft. Size -- in.
Packer Depth 4,473 ft. Size 6 3/4 in. Packer Depth -- ft. Size -- in.
Depth of Selective Zone Set ft.

Top Recorder Depth (Inside) 4,461 ft. Recorder Number 21098 Cap. 5,000 psi
Bottom Recorder Depth (Outside) 4,540 ft. Recorder Number 13387 Cap. 4,000 psi
Below Straddle Recorder Depth ft. Recorder Number Cap. psi

Drilling Contractor Duke Drilling Co., Inc. - Rig 4 Drill Collar Length -- ft. I.D. -- in.
Mud Type Chemical Viscosity 52 Weight Pipe Length -- ft. I.D. -- in.
Weight 9.3 Water Loss 8.0 cc. Drill Pipe Length 4,448 ft. I.D. 3 1/2 in.
Chlorides 4,600 P.P.M. Test Tool Length 25 ft. Tool Size 3 1/2 - IF in.
Jars: Make Bowen Serial Number Not Run Anchor Length 39' perf. w/ 31' drill pipe Size 4 1/2 - FH in.
Did Well Flow? No Reversed Out No Surface Choke Size 1 in. Bottom Choke Size 5/8 in.
Main Hole Size 7 7/8 in. Tool Joint Size 4 1/2 - XH in.

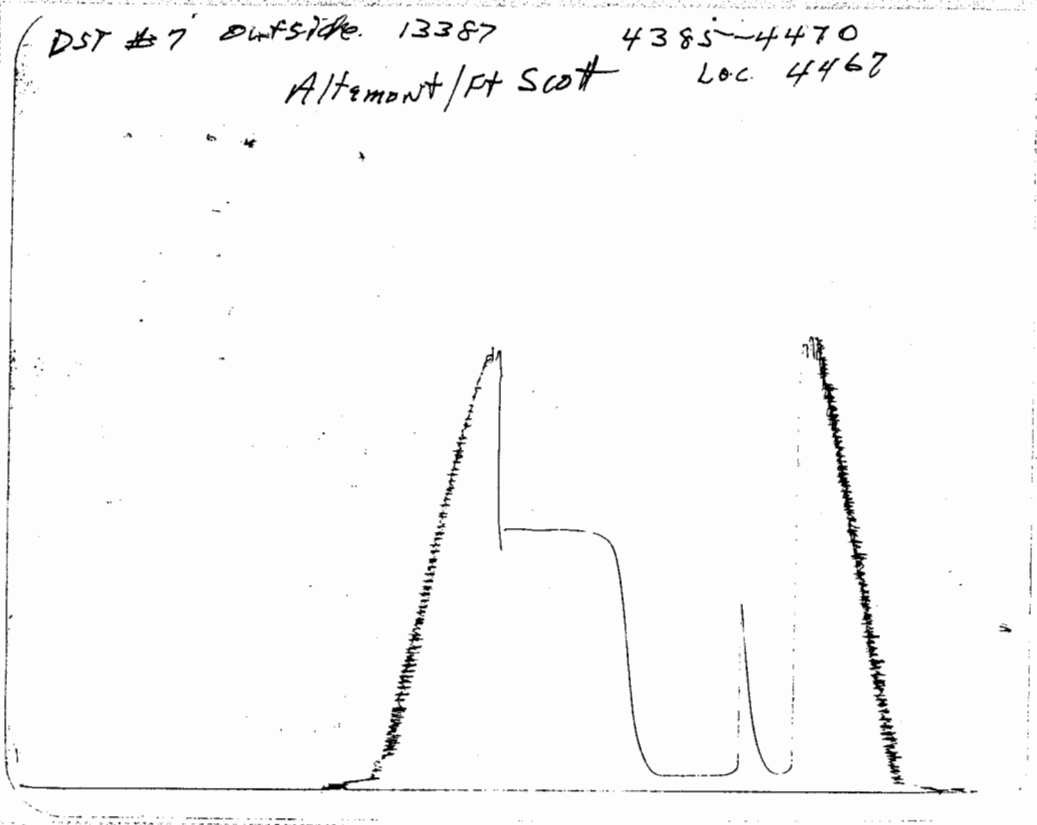
Blow: 1st Open: Weak surface blow increasing to 1/2 in. No blow back during shut-in.
2nd Open: No blow.

Recovered 3 ft. of drilling mud with a few oil specks = .042600 bbls.
Recovered ft. of
Recovered ft. of
Recovered ft. of
Recovered ft. of

Remarks Tool Sample Grind Out: 100%-drilling mud with some free oil spots

Time Set Packer(s)	<u>11:57</u>	<u>XXX</u> P.M.	Time Started Off Bottom	<u>3:37</u>	<u>A.M.</u> P.M.	Maximum Temperature	<u>122°</u>
Initial Hydrostatic Pressure			(A)	<u>2191</u>	P.S.I.		
Initial Flow Period	Minutes	<u>10</u>	(B)	<u>6</u>	P.S.I. to (C)	<u>11</u>	P.S.I.
Initial Closed In Period	Minutes	<u>30</u>	(D)	<u>45</u>	P.S.I.		
Final Flow Period	Minutes	<u>60</u>	(E)	<u>7</u>	P.S.I. to (F)	<u>11</u>	P.S.I.
Final Closed In Period	Minutes	<u>120</u>	(G)	<u>123</u>	P.S.I.		
Final Hydrostatic Pressure			(H)	<u>2189</u>	P.S.I.		

DST #7 outside. 13387 4385-4470
Altamont/Ft Scott Loc 4467





DIAMOND TESTING
 P. O. Box 157
 HOISINGTON, KANSAS 67544
 (800) 542-7313

FLUID SAMPLE DATA

Company Mull Drilling Co., Inc.

Lease & Well No. Reifschneider No. 1-28

Date 6-17-05 Sec. 28 Twp. 17 S Range 28 W

Formation Test No. 8 Interval Tested From 4,473 ft. to 4,543 ft. Total Depth 4,543 ft.

Formation Cherokee/Johnson

	<u>MUD PIT</u>	<u>RECOVERY</u>
Viscosity	<u>52</u> CP	<u>50</u> CP
Weight	<u>9.3</u>	<u>9.4</u>
Water Loss	<u>8.0</u> CC	<u>8.8</u> CC
PH Factor	<u>11.0</u>	<u>10.5</u>

	<u>RESISTIVITY</u>	<u>CHLORIDE CONTENT</u>
Recovery Water	<u>--</u> @ <u>--</u> °F.	<u>--</u> ppm
Recovery Mud	<u>1.40</u> @ <u>64</u> °F.	<u>5,000</u> ppm
Recovery Mud Filtrate	<u>1.30</u> @ <u>66</u> °F.	<u>4,800</u> ppm
Mud Pit Sample	<u>1.30</u> @ <u>60</u> °F.	<u>5,400</u> ppm
Mud Pit Sample Filtrate	<u>1.30</u> @ <u>64</u> °F.	<u>5,000</u> ppm

Sample Taken By ROGER D. FRIEDLY

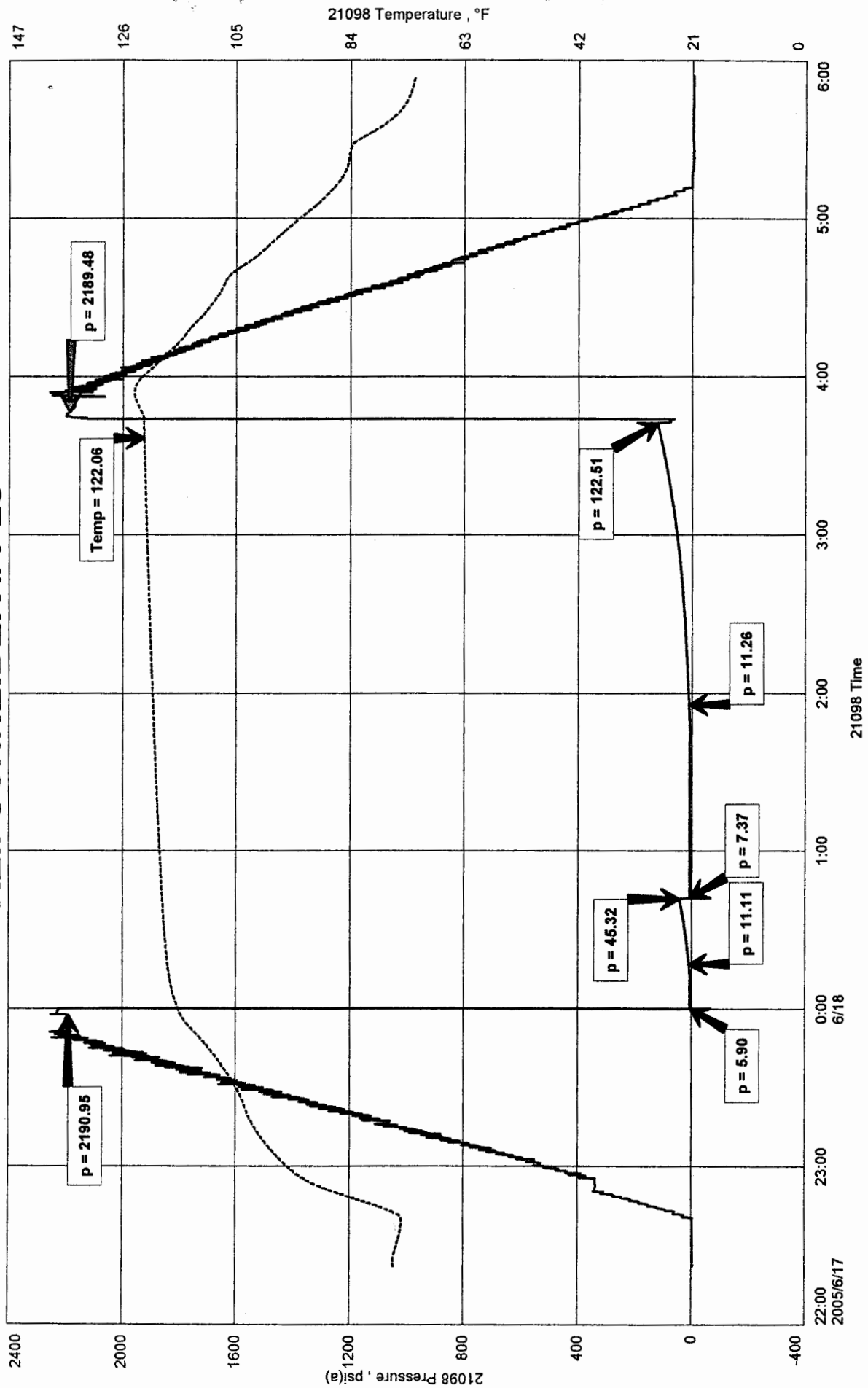
Witness By KEVIN L. KESSLER

Remarks Pit filtrate triton dish chlorides were 4,600 Ppm
Recovery filtrate triton dish chlorides were 4,500 Ppm

MULL DRILLING COMPANY, INC.
DST #8 CHERO./JOHNSON 4,473' - 4,543'
Start Test Date: 2005/06/17
Final Test Date: 2005/06/18

REIFSCHNEIDER #1-28
Formation: DST #8 CHERO./JOHNSON 4,473' - 4,543'
Pool: WILDCAT

REIFSCHNEIDER #1-28



DST # 8 outside 13387

Chero Johnson

4473-4543

LOC 4540

