

# DIAMOND TESTING

P.O. Box 157  
HOISINGTON, KANSAS 67544  
(620) 653-7550 • (800) 542-7313  
STC 21108.D272

Company Mull Drilling Co., Inc. Lease & Well No. McWhirter "A" No. 1-28  
Elevation 2756KB Formation Lansing/Kansas City "E" - "F" Effective Pay -- Ft. Ticket No. J1878  
Date 6-07-06 Sec. 28 Twp. 17S Range 28W County          Lane          State Kansas  
Test Approved By Roger Martin Diamond Representative John C. Riedl

Formation Test No. 1 Interval Tested from 4,042 ft. to 4,078 ft. Total Depth 4,078 ft.  
Packer Depth 4,037 ft. Size 6 3/4 in. Packer Depth -- ft. Size -- in.  
Packer Depth 4,042 ft. Size 6 3/4 in. Packer Depth -- ft. Size -- in.  
Depth of Selective Zone Set          ft.

Top Recorder Depth (Inside) 4,045 ft. Recorder Number 21108 Cap. 5,000 psi  
Bottom Recorder Depth (Outside) 4,075 ft. Recorder Number 11017 Cap. 4,000 psi  
Below Straddle Recorder Depth          ft. Recorder Number          Cap.          psi

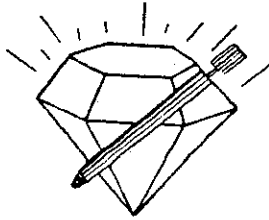
Drilling Contractor Southwind Drilling, Inc. - Rig 1 Drill Collar Length -- ft. I.D. -- in.  
Mud Type Chemical Viscosity 46 Weight Pipe Length -- ft. I.D. -- in.  
Weight 8.8 Water Loss 8.0 cc. Drill Pipe Length 4,022 ft. I.D. 3 1/2 in.  
Chlorides 2,200 P.P.M. Test Tool Length 20 ft. Tool Size 3 1/2 - IE in.  
Jars: Make Bowen Serial Number Not Run Anchor Length 36 ft. Size 4 1/2 - FH in.  
Did Well Flow? No Reversed Out No Surface Choke Size 1 in. Bottom Choke Size 5/8 in.  
Main Hole Size 7/8 in. Tool Joint Size 4 1/2 - XH in.

Blow: 1st Open: Weak blow, slowly building to 1 in.  
2nd Open: Weak, 1 in., blow in 25 mins.; then remained 1 in. throughout.

Recovered 35 ft. of oil cut mud = .497000 bbls. (Grind out: 20%-oil; 80%-mud)  
Recovered          ft. of           
Recovered          ft. of           
Recovered          ft. of           
Recovered          ft. of           
Remarks Tool Sample Grind Out: 30%-oil; 70%-mud

RECEIVED  
SEP 28 2006  
KCC WICHITA

Time Set Packer(s) 10:24 ~~P.M.~~ <sup>A.M.</sup> Time Started Off Bottom 2:24 ~~P.M.~~ <sup>A.M.</sup> Maximum Temperature 118°  
Initial Hydrostatic Pressure          (A) 1941 P.S.I.  
Initial Flow Period          Minutes 15 (B) 31 P.S.I. to (C) 33 P.S.I.  
Initial Closed In Period          Minutes 45 (D) 669 P.S.I.  
Final Flow Period          Minutes 60 (E) 33 P.S.I. to (F) 42 P.S.I.  
Final Closed In Period          Minutes 120 (G) 723 P.S.I.  
Final Hydrostatic Pressure          (H) 1930 P.S.I.



**DIAMOND TESTING**  
 P.O. Box 157  
 HOISINGTON, KANSAS 67544  
 (620) 653-7550 • (800) 542-7313

Page 2 of 3 Pages

**FLUID SAMPLE DATA**

Company Mull Drilling Co., Inc.  
 Lease & Well No. McWhirter "A" No. 1-28  
 Date 6-07-06 Sec. 28 Twp. 17 S Range 28 W  
 Formation Test No. 1 Interval Tested From 4,042 ft. to 4,078 ft. Total Depth 4,078 ft.  
 Formation Lansing/Kansas City "E" - "F"

	<u>MUD PIT</u>	<u>RECOVERY</u>
Viscosity	<u>46</u> CP	<u>--</u> CP
Weight	<u>8.8</u>	<u>--</u>
Water Loss	<u>8.0</u> CC	<u>6.0</u> CC
PH Factor	<u>10.5</u>	<u>10.0</u>

	<u>RESISTIVITY</u>	<u>CHLORIDE CONTENT</u>
Recovery Water	<u>-- @ -- °F.</u>	<u>-- ppm</u>
Recovery Mud	<u>-- @ -- °F.</u>	<u>-- ppm</u>
Recovery Mud Filtrate	<u>3.00 @ 75 °F.</u>	<u>1,800 ppm</u>
Mud Pit Sample	<u>-- @ -- °F.</u>	<u>-- ppm</u>
Mud Pit Sample Filtrate	<u>2.80 @ 80 °F.</u>	<u>2,000 ppm</u>

Sample Taken By JOHN C. RIEDL

Witness By ROGER MARTIN

Remarks Pit filtrate triton dish chlorides were 2,000 Ppm  
Recovery filtrate triton dish chlorides were 2,000 Ppm

**RECEIVED**

SEP 28 2006

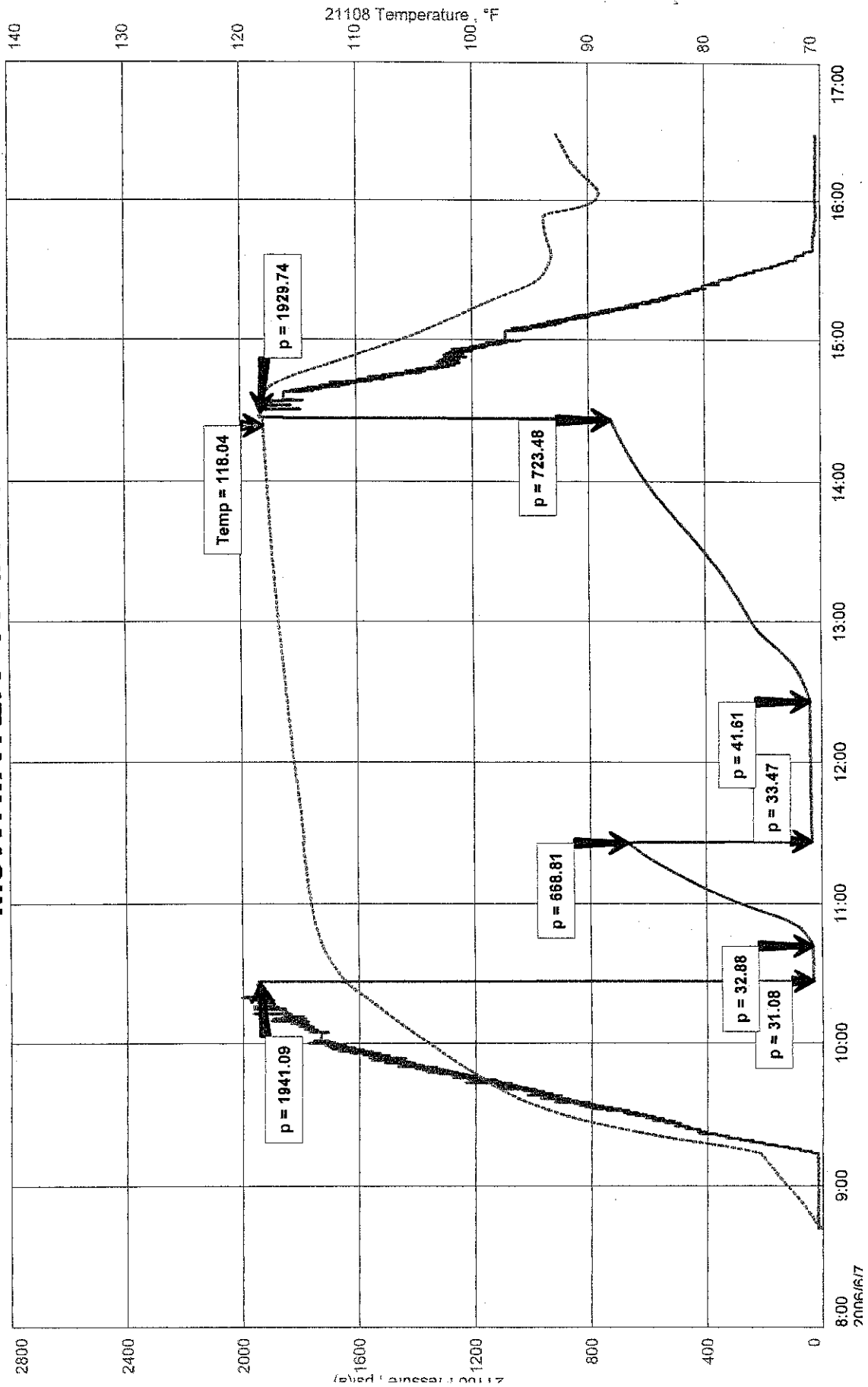
**KCC WICHITA**



McWHIRTER "A" #1-28  
Formation: LKC "E,F"  
Job Number: D272

JLL DRILLING CO INC  
3T #1 4052 TO 4078  
art Test Date: 2006/06/07  
nal Test Date: 2006/06/07

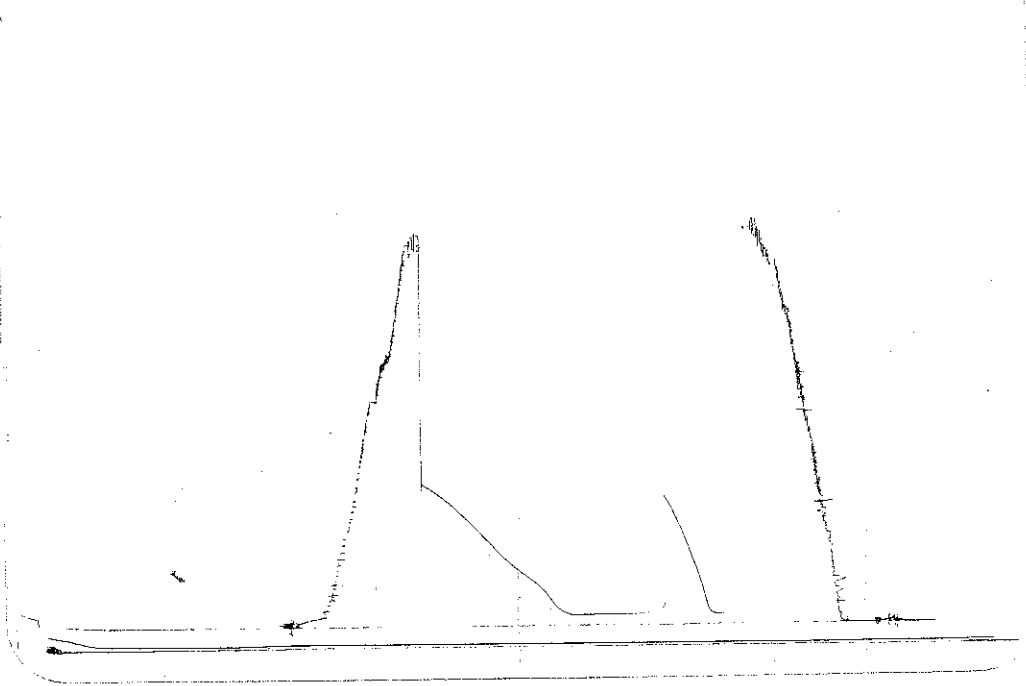
# McWHIRTER "A" #1-28



MELLE  
McWHIRTER #1-28

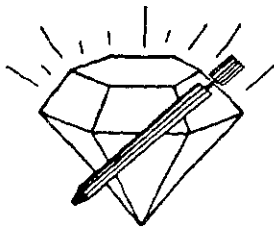
DST #1

REC #11017  
DUSTAN  
LOG 4078



This is an actual photograph of recorder chart.

POINT	PRESSURE		Elec. Office Reading	PSI
	Field Reading			
(A) Initial Hydrostatic Mud .....	1941	1941		PSI
(B) First Initial Flow Pressure.....	31	31		PSI
(C) First Final Flow Pressure .....	33	33		PSI
(D) Initial Closed-in Pressure .....	669	669		PSI
(E) Second Initial Flow Pressure .....	33	33		PSI
(F) Second Final Flow Pressure.....	42	42		PSI
(G) Final Closed-in Pressure.....	723	723		PSI
(H) Final Hydrostatic Mud .....	1930	1930		PSI



**DIAMOND TESTING**  
 P.O. Box 157  
 HOISINGTON, KANSAS 67544  
 (620) 653-7550 • (800) 542-7313  
 STC 21108.D273

Company Mull Drilling Co., Inc. Lease & Well No. McWhirter "A" No. 1-28  
 Elevation 2756KB Formation Lansing/Kansas City "H" - "I" Effective Pay -- Ft. Ticket No. J1879  
 Date 6-08-06 Sec. 28 Twp. 17S Range 28W County          Lane          State Kansas  
 Test Approved By Roger Martin Diamond Representative John C. Riedl

Formation Test No. 2 Interval Tested from 4,134 ft. to 4,200 ft. Total Depth 4,200 ft.  
 Packer Depth 4,129 ft. Size 6 3/4 in. Packer Depth -- ft. Size -- in.  
 Packer Depth 4,134 ft. Size 6 3/4 in. Packer Depth -- ft. Size -- in.  
 Depth of Selective Zone Set          ft.

Top Recorder Depth (Inside) 4,137 ft. Recorder Number 21108 Cap. 5,000 psi  
 Bottom Recorder Depth (Outside) 4,197 ft. Recorder Number 11017 Cap. 4,000 psi  
 Below Straddle Recorder Depth          ft. Recorder Number          Cap.          psi

Drilling Contractor Southwind Drilling, Inc. - Rig 1 Drill Collar Length -- ft. I.D. -- in.  
 Mud Type Chemical Viscosity 55 Weight Pipe Length -- ft. I.D. -- in.  
 Weight 9.2 Water Loss 7.5 cc. Drill Pipe Length 4,114 ft. I.D. 3 1/2 in.  
 Chlorides 3,000 P.P.M. Test Tool Length 20 ft. Tool Size 3 1/2 - IF in.  
 Jars: Make Bowen Serial Number Not Run Anchor Length 66 ft. Size 4 1/2 - FH in.  
 Did Well Flow? No Reversed Out No Surface Choke Size 1 in. Bottom Choke Size 5/8 in.  
 Main Hole Size 7/8 in. Tool Joint Size 4 1/2 - XH in.

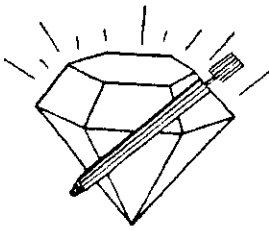
Blow: 1st Open: Strong blow. Off bottom of bucket in 7 mins. No blow back during shut-in.  
2nd Open: Strong blow. Off bottom of bucket in 8 mins. Weak, 1 in., blow back during shut-in.

Recovered 130 ft. of gas cut muddy oil = 1.846000 bbls. (Grind out: 10%-gas; 40%-mud; 50%-oil)  
 Recovered 310 ft. of very gassy free oil = 4.402000 bbls. (Grind out: 40%-gas; 60%-oil)  
 Recovered 125 ft. of clean gassy oil = 1.775000 bbls. (Grind out: 20%-gas; 80%-oil) Gravity: 35 @ 60°  
 Recovered 60 ft. of very slightly water cut muddy gassy oil = .852000 bbls. (Grind out: 3%-water; 10%-mud; 20%-gas;  
 Recovered 625 ft. of TOTAL FLUID = 8.875000 bbls. 67%-oil)

Remarks Tool Sample Grind Out: 10%-gas; 90%-oil

**RECEIVED**  
**SEP 28 2006**  
**KCC WICHITA**

Time Set Packer(s) <u>8:41</u> <b>AM</b> P.M.	Time Started Off Bottom <u>12:41</u> <b>AM</b> P.M.	Maximum Temperature <u>125°</u>
Initial Hydrostatic Pressure <u>2008</u> (A) P.S.I.		
Initial Flow Period <u>15</u> Minutes (B) <u>40</u> P.S.I. to (C) <u>107</u> P.S.I.		
Initial Closed In Period <u>45</u> Minutes (D) <u>1235</u> P.S.I.		
Final Flow Period <u>60</u> Minutes (E) <u>110</u> P.S.I. to (F) <u>279</u> P.S.I.		
Final Closed In Period <u>120</u> Minutes (G) <u>1230</u> P.S.I.		
Final Hydrostatic Pressure <u>1992</u> (H) P.S.I.		



**DIAMOND TESTING**  
 P.O. Box 157  
**HOISINGTON, KANSAS 67544**  
 (620) 653-7550 • (800) 542-7313

**FLUID SAMPLE DATA**

Company Mull Drilling Co., Inc.  
 Lease & Well No. McWhirter "A" No. 1-28  
 Date 6-08-06 Sec. 28 Twp. 17 S Range 28 W  
 Formation Test No. 2 Interval Tested From 4,134 ft. to 4,200 ft. Total Depth 4,200 ft.  
 Formation Lansing/Kansas City "H" - "I"

	<u>MUD PIT</u>	<u>RECOVERY</u>
Viscosity	<u>55</u> CP	<u>--</u> CP
Weight	<u>9.2</u>	<u>--</u>
Water Loss	<u>7.5</u> CC	<u>16.0</u> CC
PH Factor	<u>10.5</u>	<u>8.0</u>

	<u>RESISTIVITY</u>	<u>CHLORIDE CONTENT</u>
Recovery Water	<u>-- @ -- °F.</u>	<u>-- ppm</u>
Recovery Mud	<u>-- @ -- °F.</u>	<u>-- ppm</u>
Recovery Mud Filtrate	<u>.18 @ 100 °F.</u>	<u>24,000 ppm</u>
Mud Pit Sample	<u>-- @ -- °F.</u>	<u>-- ppm</u>
Mud Pit Sample Filtrate	<u>2.80 @ 80 °F.</u>	<u>2,000 ppm</u>

Sample Taken By JOHN C. RIEDL

Witness By ROGER MARTIN

Remarks Pit filtrate triton dish chlorides were 3,000 Ppm  
Recovery filtrate triton dish chlorides were 20,000 Ppm

**RECEIVED**  
**SEP 28 2006**  
**KCC WICHITA**

## GENERAL INFORMATION

### Client Information:

Company: MULL DRILLING CO INC  
Contact: ERNIE MORRISON  
Phone: Fax: e-mail:

### Site Information:

Contact: ROGER MARTIN  
Phone: Fax: e-mail:

### Well Information:

Name: McWHIRTER "A" #1-28  
Operator: MULL DRILLING CO INC  
Location-Downhole: DST #2 4134 TO 4200  
Location-Surface: S28/17S/28W LANE COUNTY

### Test Information:

Company: DIAMOND TESTING  
Representative: JOHN RIEDL  
Supervisor: ROGER MARTIN  
Test Type: CONVENTIONAL Job Number: D273  
Test Unit: 2  
Start Date: 2006/06/08 Start Time: 06:22:00  
End Date: 2006/06/08 End Time: 15:40:00  
Report Date: 2006/06/08 Prepared By: JOHN RIEDL  
Qualified By: ROGER MARTIN

### Remarks:

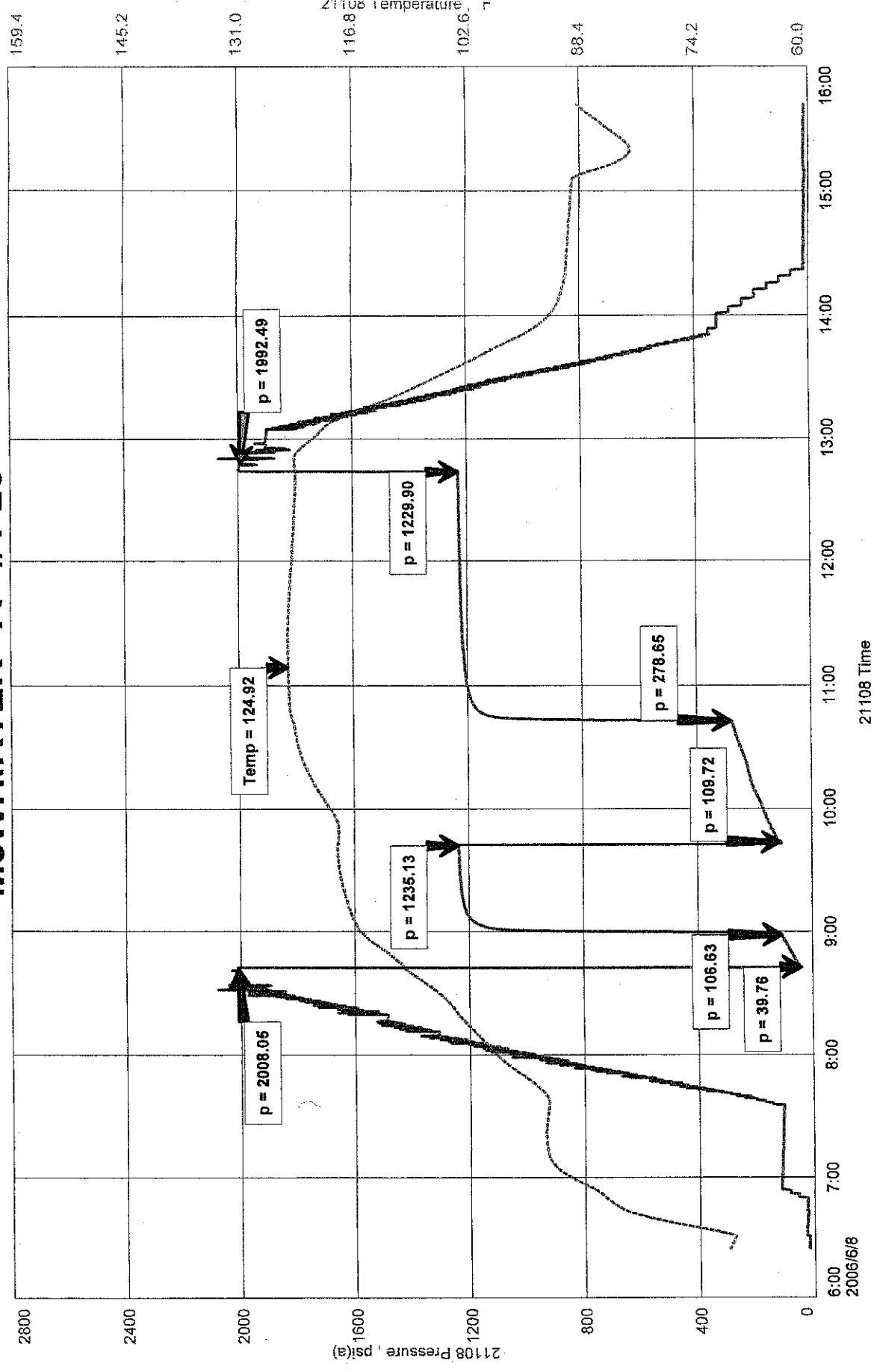
REC: 130' GCMO (10%GAS 40%MUD 50%OIL)  
310' VGFO (40%GAS 60%OIL)  
125' CGO (20%GAS 80%OIL) 25 GRAVITY@60  
60' VSLWCMGO(3%WATER 10%MUD 20%GAS 67%OIL)  
TOTAL FLUID REC. 625' IN DRILL PIPE  
TOOL SAMPLE GRINDOUT (10%GAS 90%OIL)

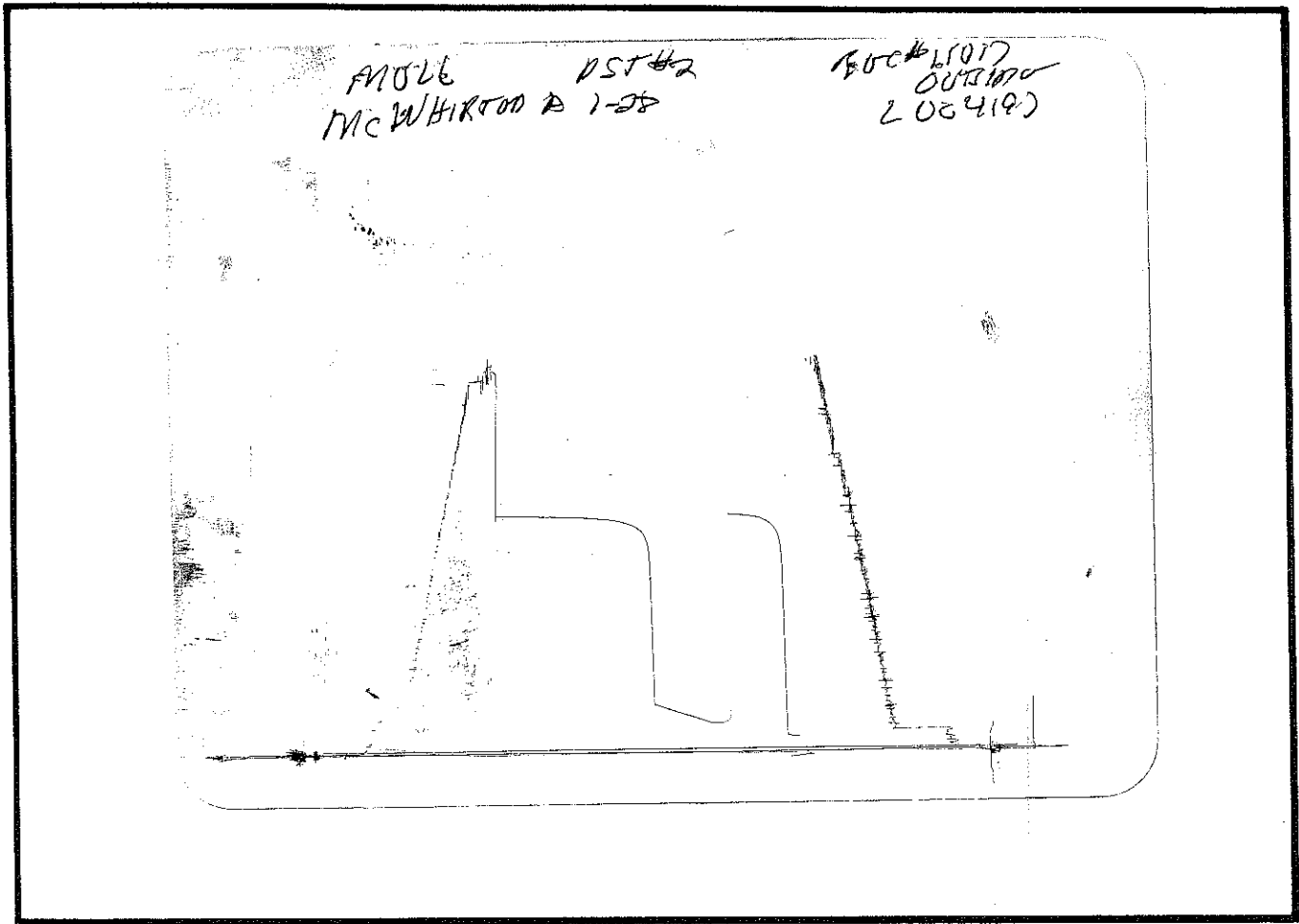
RECEIVED

SEP 28 2006

KCC WICHITA Fast

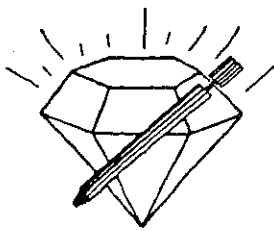
# McWHIRTER "A" #1-28





This is an actual photograph of recorder chart.

POINT	PRESSURE		Elec. Office Reading	PSI
	Field Reading			
(A) Initial Hydrostatic Mud .....	2008	2008		PSI
(B) First Initial Flow Pressure.....	40	40		PSI
(C) First Final Flow Pressure .....	107	107		PSI
(D) Initial Closed-in Pressure .....	1235	1235		PSI
(E) Second Initial Flow Pressure .....	110	110		PSI
(F) Second Final Flow Pressure.....	279	279		PSI
(G) Final Closed-in Pressure.....	1230	1230		PSI
(H) Final Hydrostatic Mud .....	1992	1992		PSI



**DIAMOND TESTING**  
P.O. Box 157  
HOISINGTON, KANSAS 67544  
(620) 653-7550 • (800) 542-7313  
STC 21108.D274

Company Mull Drilling Co., Inc. Lease & Well No. McWhirter "A" No. 1-28  
Elevation 2756KB Formation Lansing/Kansas City "J" Effective Pay      Ft. Ticket No. J1880  
Date 6-09-06 Sec. 28 Twp. 17S Range 28W County      Lane      State Kansas  
Test Approved By Roger Martin Diamond Representative John C. Riedl

Formation Test No. 3 Interval Tested from 4,199 ft. to 4,223 ft. Total Depth 4,223 ft.  
Packer Depth 4,194 ft. Size 6 3/4 in. Packer Depth      ft. Size      in.  
Packer Depth 4,199 ft. Size 6 3/4 in. Packer Depth      ft. Size      in.  
Depth of Selective Zone Set      ft.

Top Recorder Depth (Inside) 4,202 ft. Recorder Number 21108 Cap. 5,000 psi  
Bottom Recorder Depth (Outside) 4,220 ft. Recorder Number 11017 Cap. 4,000 psi  
Below Straddle Recorder Depth      ft. Recorder Number      Cap.      psi

Drilling Contractor Southwind Drilling, Inc. - Rig 1 Drill Collar Length      ft. I.D.      in.  
Fluid Type Chemical Viscosity 49 Weight Pipe Length      ft. I.D.      in.  
Weight 9.1 Water Loss 8.0 cc. Drill Pipe Length 4,179 ft. I.D. 3 1/2 in.  
Chlorides 3,000 P.P.M. Test Tool Length 20 ft. Tool Size 3 1/2 - IF in.  
Pumps: Make Bowen Serial Number Not Run Anchor Length 24 ft. Size 4 1/2 - FH in.  
Did Well Flow? No Reversed Out No Surface Choke Size 1 in. Bottom Choke Size 5/8 in.  
Main Hole Size 7/8 in. Tool Joint Size 4 1/2 - XH in.

1st Open: Good blow. Built throughout to a 6 in. blow at end. No blow back during shut-in.  
2nd Open: Strong blow. Built slowly to 8 ins. at end. Weak, 1/2 in., blow back during shut-in.

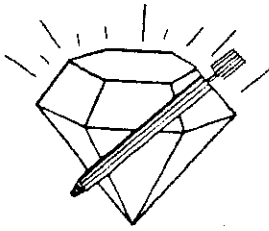
Recovered 10 ft. of gas in pipe  
Recovered 350 ft. of water with a scum of oil on top of stand = 4.970000 bbls. (Chlorides: 34,000 Ppm)  
Recovered 350 ft. of TOTAL FLUID = 4.970000 bbls.  
Recovered      ft. of       
Recovered      ft. of     

**RECEIVED**

**SEP 28 2006**

**KCC WICHITA**

Time Set Packer(s)	A.M. P.M.	Time Started Off Bottom	A.M. P.M.	Maximum Temperature
<u>1:10</u>	<u>    </u>	<u>5:10</u>	<u>    </u>	<u>129°</u>
Initial Hydrostatic Pressure		(A) <u>2039</u>		P.S.I.
Initial Flow Period	Minutes <u>15</u>	(B) <u>31</u>		P.S.I. to (C) <u>68</u> P.S.I.
Initial Closed In Period	Minutes <u>45</u>	(D) <u>1189</u>		P.S.I.
Normal Flow Period	Minutes <u>60</u>	(E) <u>69</u>		P.S.I. to (F) <u>191</u> P.S.I.
Normal Closed In Period	Minutes <u>120</u>	(G) <u>1163</u>		P.S.I.
Normal Hydrostatic Pressure		(H) <u>2019</u>		P.S.I.



**DIAMOND TESTING**  
 P.O. Box 157  
 HOISINGTON, KANSAS 67544  
 (620) 653-7550 • (800) 542-7313

**FLUID SAMPLE DATA**

Company Mull Drilling Co., Inc.  
 Lease & Well No. McWhirter "A" No. 1-28  
 Date 6-09-06 Sec. 28 Twp. 17 S Range 28 W  
 Formation Test No. 3 Interval Tested From 4,199 ft. to 4,223 ft. Total Depth 4,223 ft.  
 Formation Lansing/Kansas City "J"

	<u>MUD PIT</u>	<u>RECOVERY</u>
Viscosity	<u>49</u> CP	<u>--</u> CP
Weight	<u>9.1</u>	<u>--</u>
Water Loss	<u>8.0</u> CC	<u>--</u> CC
PH Factor	<u>10.5</u>	<u>7.5</u>

	<u>RESISTIVITY</u>	<u>CHLORIDE CONTENT</u>
Recovery Water	<u>.21 @ 70 °F.</u>	<u>32,000 ppm</u>
Recovery Mud	<u>-- @ -- °F.</u>	<u>-- ppm</u>
Recovery Mud Filtrate	<u>-- @ -- °F.</u>	<u>-- ppm</u>
Mud Pit Sample	<u>-- @ -- °F.</u>	<u>-- ppm</u>
Mud Pit Sample Filtrate	<u>2.00 @ 70 °F.</u>	<u>3,100 ppm</u>

Sample Taken By JOHN C. RIEDL

Witness By ROGER MARTIN

Remarks Pit filtrate triton dish chlorides were 3,000 Ppm  
Recovery water dish chlorides were 34,000 Ppm

**RECEIVED**  
**SEP 28 2006**  
**KCC WICHITA**

## GENERAL INFORMATION

### Client Information:

Company: MULL DRILLING CO INC

Contact: ERNIE MORRISON

Phone: Fax: e-mail:

### Site Information:

Contact: ROGER MARTIN

Phone: Fax: e-mail:

### Well Information:

Name: McWHIRTER "A" #1-28

Operator: MULL DRILLING CO INC

Location-Downhole: DST #3 4199 TO 4223

Location-Surface: S28/17S/28W LANE COUNTY

### Test Information:

Company: DIAMOND TESTING

Representative: JOHN RIEDL

Supervisor: ROGER MARTIN

Test Type: CONVENTIONAL

Job Number: D274

Test Unit: 2

Start Date: 2006/06/08

Start Time: 23:37:00

End Date: 2006/06/09

End Time: 07:30:00

Report Date: 2006/06/09

Prepared By: JOHN RIEDL

### Remarks:

Qualified By: ROGER MARTIN

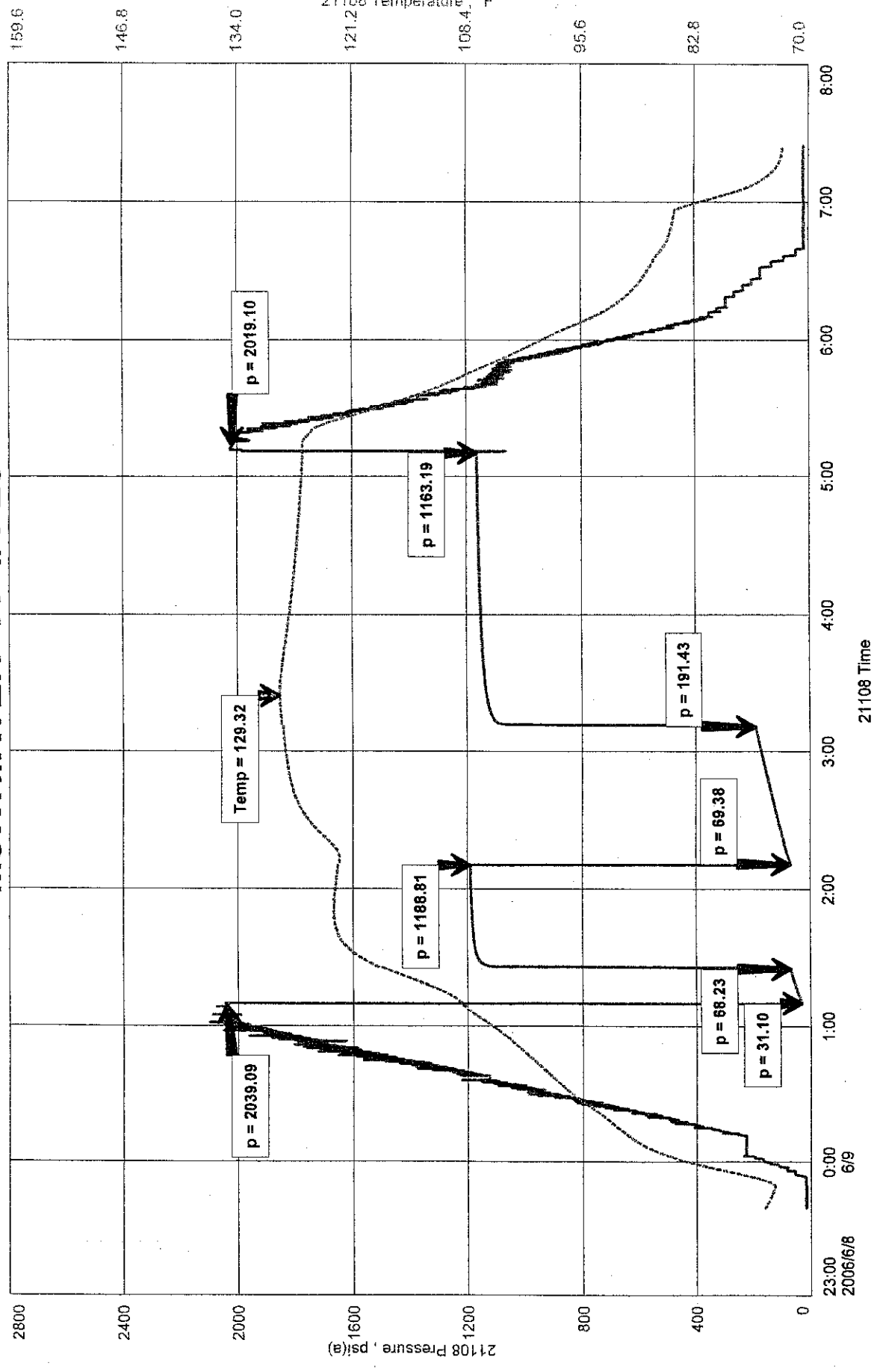
RECOVERY: 10' GIP  
350' WATER WITH SCUM OF OIL IN TOP STAND  
I CHLORIDES 34,000Ppm

RECEIVED  
SEP 28 2006  
KCC WICHITA

Fast

# MCWHIRTER "A" #1-28

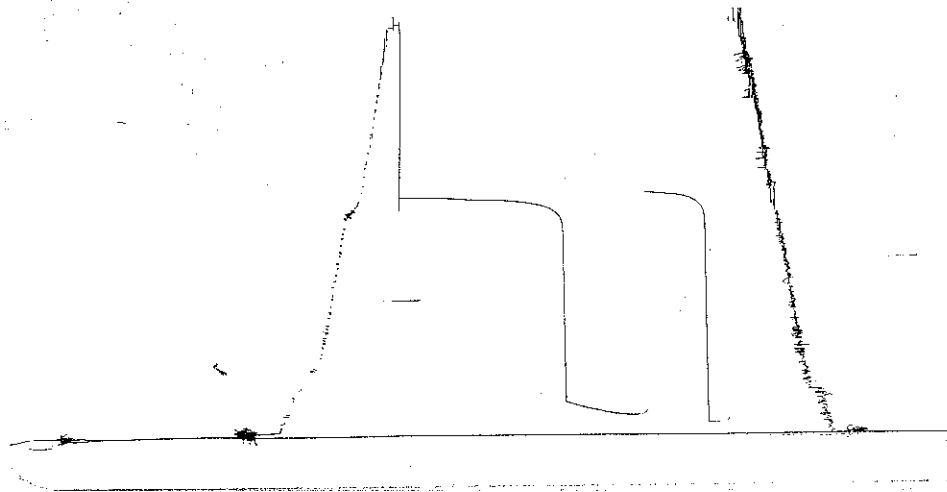
MULL DRILLING CO INC  
 DST #3 4199 TO 4223  
 Start Test Date: 2006/06/08  
 Final Test Date: 2006/06/09



MOLL  
McWHIRTER 106-28

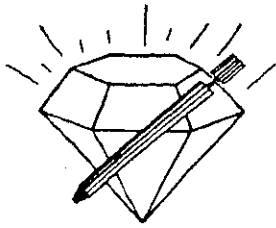
VSV #3

INTEGRATED  
OUTSOURCING  
LOC 4319



This is an actual photograph of recorder chart.

POINT	PRESSURE		
	Field Reading	Elec. Office Reading	
(A) Initial Hydrostatic Mud .....	2039	2039	PSI
(B) First Initial Flow Pressure .....	31	31	PSI
(C) First Final Flow Pressure .....	68	68	PSI
(D) Initial Closed-in Pressure .....	1189	1189	PSI
(E) Second Initial Flow Pressure .....	69	69	PSI
(F) Second Final Flow Pressure .....	191	191	PSI
(G) Final Closed-in Pressure .....	1163	1163	PSI
(H) Final Hydrostatic Mud .....	2019	2019	PSI



**DIAMOND TESTING**  
 P.O. Box 157  
 HOISINGTON, KANSAS 67544  
 (620) 653-7550 • (800) 542-7313  
 STC 21108.D275

Company Mull Drilling Co., Inc. Lease & Well No. McWhirter "A" No. 1-28  
 Elevation 2756KB Formation Lansing/Kansas City "K" & Middle Creek Effective Pay -- Ft. Ticket No. J1881  
 Date 6-09-06 Sec. 28 Twp. 17S Range 28W County          Lane          State Kansas  
 Test Approved By Roger Martin Diamond Representative John C. Riedl

Formation Test No. 4 Interval Tested from 4,226 ft. to 4,273 ft. Total Depth 4,273 ft.  
 Packer Depth 4,221 ft. Size 6 3/4 in. Packer Depth -- ft. Size -- in.  
 Packer Depth 4,226 ft. Size 6 3/4 in. Packer Depth -- ft. Size -- in.  
 Depth of Selective Zone Set          ft.

Top Recorder Depth (Inside) 4,229 ft. Recorder Number 21108 Cap. 5,000 psi  
 Bottom Recorder Depth (Outside) 4,270 ft. Recorder Number 11017 Cap. 4,000 psi  
 Below Straddle Recorder Depth          ft. Recorder Number          Cap.          psi

Drilling Contractor Southwind Drilling, Inc. - Rig 1 Drill Collar Length -- ft. I.D. -- in.  
 Mud Type Chemical Viscosity 49 Weight Pipe Length -- ft. I.D. -- in.  
 Weight 9.2 Water Loss 7.2 cc. Drill Pipe Length 4,206 ft. I.D. 3 1/2 in.  
 Chlorides 3,200 P.P.M. Test Tool Length 20 ft. Tool Size 3 1/2 - JF in.  
 Jars: Make Bowen Serial Number Not Run Anchor Length 47 ft. Size 4 1/2 - FH in.  
 Did Well Flow? No Reversed Out Yes Surface Choke Size 1 in. Bottom Choke Size 5/8 in.  
 Main Hole Size 7/8 in. Tool Joint Size 4 1/2 - XH in.

Blow: 1st Open: Strong blow. Off bottom of bucket in 1 min. No blow back during shut-in.  
2nd Open: Strong blow. Off bottom of bucket in 2 mins. Fair, 4 in., blow back during shut-in.

Recovered 2,260 ft. of slightly mud cut gas & water cut oil = 32.092000 bbls. (Grind out: 5%-mud; 15%-gas; 30%- water; 50%-oil.)

Recovered 120 ft. of slightly mud cut water with a scum of oil throughout = 1.704000 bbls. (Grind out: 10%-mud; 90%-water)

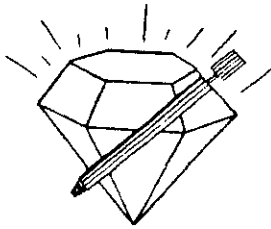
Recovered 2,380 ft. of TOTAL FLUID = 33.796000 bbls. Chlorides: 36,000 Ppm

Recovered          ft. of           
 Recovered          ft. of         

**RECEIVED**  
**SEP 28 2006**  
**KCC WICHITA**

Remarks         

Time Set Packer(s)	<u>8:26</u>	<u>AM.</u>	Time Started Off Bottom	<u>12:06</u>	<u>AM.</u>	Maximum Temperature	<u>128°</u>
Initial Hydrostatic Pressure		<u>P.M.</u>			<u>PM.</u>		
Initial Flow Period	Minutes <u>10</u>	(A)	<u>2057</u>		<u>P.S.I.</u>		
Initial Closed In Period	Minutes <u>30</u>	(B)	<u>200</u>		<u>P.S.I.</u>	to (C) <u>372</u>	<u>P.S.I.</u>
Final Flow Period	Minutes <u>60</u>	(D)	<u>1316</u>		<u>P.S.I.</u>		
Final Closed In Period	Minutes <u>120</u>	(E)	<u>412</u>		<u>P.S.I.</u>	to (F) <u>988</u>	<u>P.S.I.</u>
Final Hydrostatic Pressure		(G)	<u>1313</u>		<u>P.S.I.</u>		
		(H)	<u>2024</u>		<u>P.S.I.</u>		



**DIAMOND TESTING**  
 P.O. Box 157  
 HOISINGTON, KANSAS 67544  
 (620) 653-7550 • (800) 542-7313

**FLUID SAMPLE DATA**

Company Mull Drilling Co., Inc.  
 Lease & Well No. McWhirter "A" No. 1-28  
 Date 6-09-06 Sec. 28 Twp. 17 S Range 28 W  
 Formation Test No. 4 Interval Tested From 4,226 ft. to 4,273 ft. Total Depth 4,273 ft.  
 Formation Lansing/Kansas City "K" & Middle Creek

	<u>MUD PIT</u>	<u>RECOVERY</u>
Viscosity	<u>49</u> CP	<u>--</u> CP
Weight	<u>9.2</u>	<u>--</u>
Water Loss	<u>7.2</u> CC	<u>--</u> CC
PH Factor	<u>10.0</u>	<u>7.5</u>

	<u>RESISTIVITY</u>	<u>CHLORIDE CONTENT</u>
Recovery Water	<u>.19 @ 65 °F.</u>	<u>35,000 ppm</u>
Recovery Mud	<u>-- @ -- °F.</u>	<u>-- ppm</u>
Recovery Mud Filtrate	<u>-- @ -- °F.</u>	<u>-- ppm</u>
Mud Pit Sample	<u>-- @ -- °F.</u>	<u>-- ppm</u>
Mud Pit Sample Filtrate	<u>1.90 @ 80 °F.</u>	<u>3,000 ppm</u>

Sample Taken By JOHN C. RIEDL

Witness By ROGER MARTIN

Remarks Pit filtrate triton dish chlorides were 3,200 Ppm  
Recovery water dish chlorides were 36,000 Ppm

**RECEIVED**

**SEP 28 2006**

**KCC WICHITA**

## GENERAL INFORMATION

### Client Information:

Company: MULL DRILLING CO INC

Contact: ERNIE MORRISON

Phone: Fax: e-mail:

### Site Information:

Contact: ROGER MARTIN

Phone: Fax: e-mail:

### Well Information:

Name: McWHIRTER "A" #1-28

Operator: MULL DRILLING CO INC

Location-Downhole: DST #4 4226 TO 4273

Location-Surface: S28/17S/28W LANE COUNTY

### Test Information:

Company: DIAMOND TESTING

Representative: JOHN RIEDL

Supervisor: ROGER MARTIN

Test Type: CONVENTIONI

Job Number: D275

Test Unit: 2

Start Date: 2006/06/09

Start Time: 19:39:00

End Date: 2006/06/10

End Time: 04:40:00

Report Date: 2006/06/10

Prepared By: JOHN RIEDL

### Remarks:

Qualified By: ROGER MARTIN

RECOVERY: 2260' SLMCG+WCO (5%MUD 15%GAS 30%WATER 50%OIL)  
120' SLMCW (10%MUD 90%WATER) WITH A SCUM OF OIL THROUGHOUT  
CHLORIDES 36,000Ppm  
TOTAL FLUID REC. 2380'

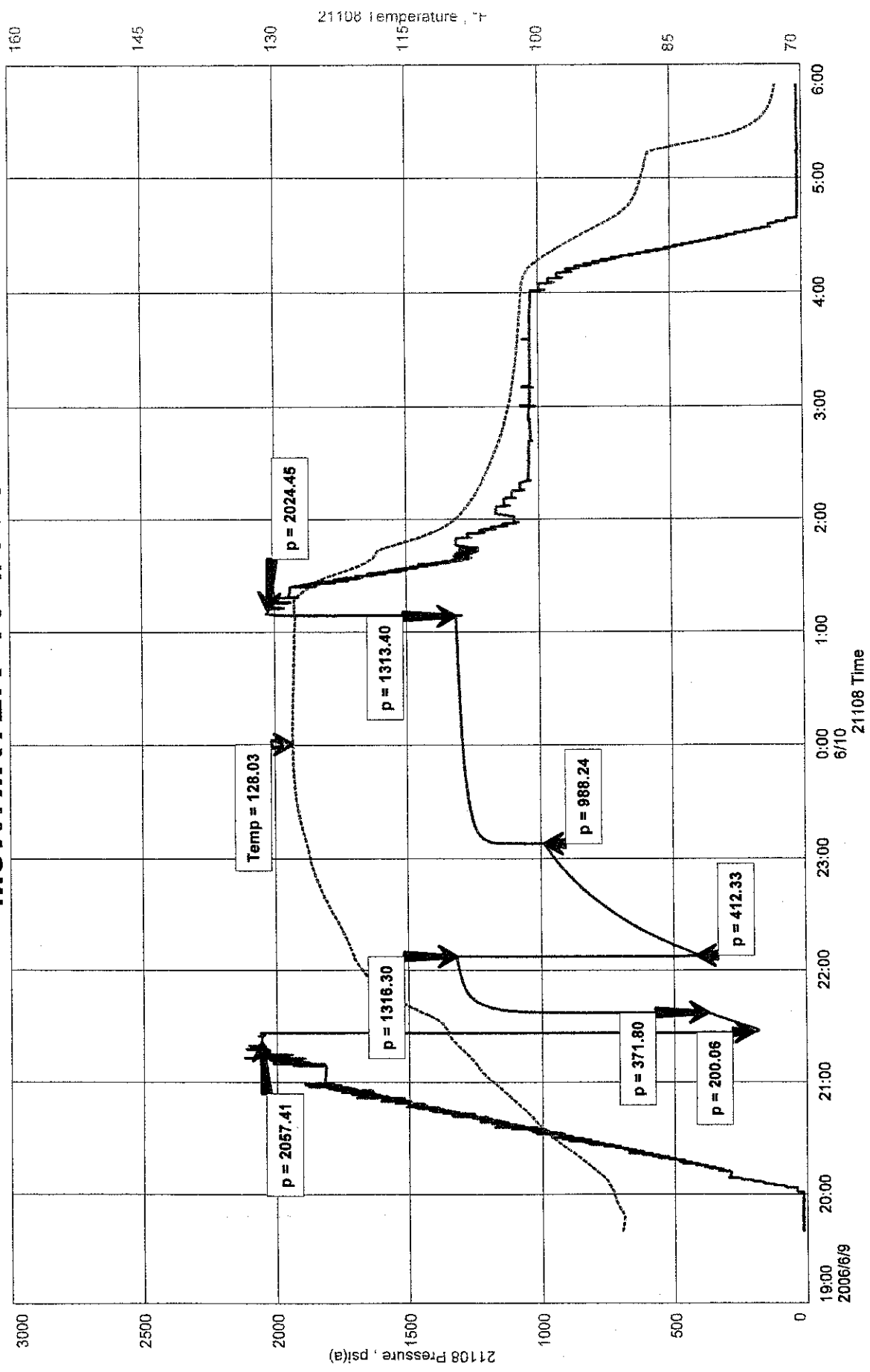
RECEIVED

SEP 28 2006

KCC WICHITA

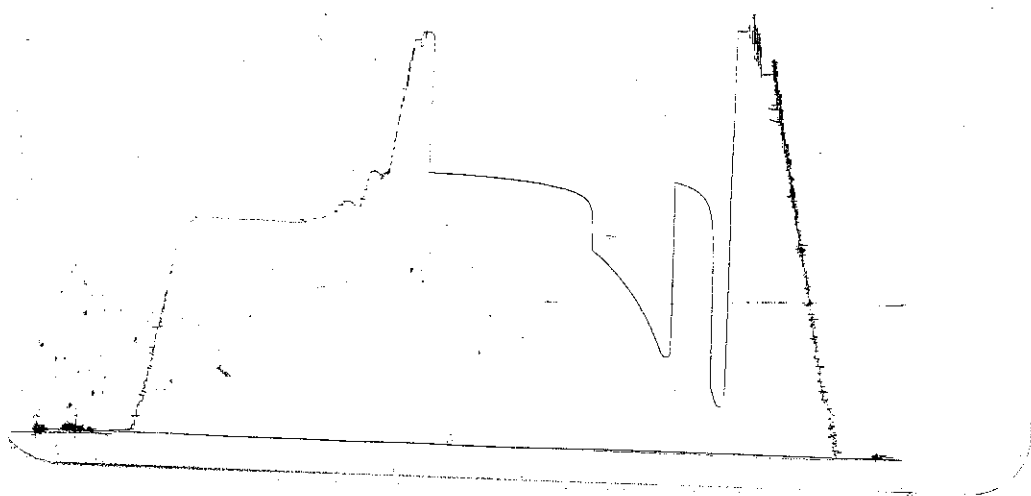
Fast

# McWHIRTER "A" #1-28



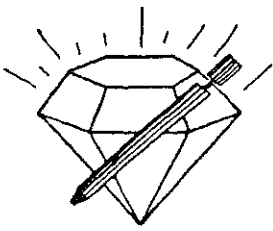
MULL DRUG DST #4  
 McWhorter D #1-28

RSO #11079  
 OUSJW  
 2004270



This is an actual photograph of recorder chart.

POINT	PRESSURE		PSI
	Field Reading	Elec. Office Reading	
(A) Initial Hydrostatic Mud	2057	2057	PSI
(B) First Initial Flow Pressure	200	200	PSI
(C) First Final Flow Pressure	372	372	PSI
(D) Initial Closed-in Pressure	1316	1316	PSI
(E) Second Initial Flow Pressure	412	412	PSI
(F) Second Final Flow Pressure	988	988	PSI
(G) Final Closed-in Pressure	1313	1313	PSI
(H) Final Hydrostatic Mud	2024	2024	PSI



**DIAMOND TESTING**  
P.O. Box 157  
HOISINGTON, KANSAS 67544  
(620) 653-7550 • (800) 542-7313  
STC 21108.D276

**RECEIVED**  
**SEP 28 2006**  
**KCC WICHITA**

Page 1 of 3 Pages

Company Mull Drilling Co., Inc. Lease & Well No. McWhirter "A" No. 1-28  
Elevation 2756KB Formation Lansing/Kansas City "L" / Marmaton & Altamont "B" Effective Pay      Ft. Ticket No. J1882  
Date 6-10-06 Sec. 28 Twp. 17S Range 28W County      Lane      State Kansas  
Test Approved By Roger Martin Diamond Representative John C. Riedl

Formation Test No. 5 Interval Tested from 4,274 ft. to 4,350 ft. Total Depth 4,350 ft.  
Packer Depth 4,269 ft. Size 6 3/4 in. Packer Depth      ft. Size      in.  
Packer Depth 4,274 ft. Size 6 3/4 in. Packer Depth      ft. Size      in.  
Depth of Selective Zone Set      ft.

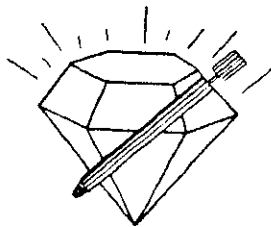
Top Recorder Depth (Inside) 4,277 ft. Recorder Number 21108 Cap. 5,000 psi  
Bottom Recorder Depth (Outside) 4,347 ft. Recorder Number 11017 Cap. 4,000 psi  
Flow Straddle Recorder Depth      ft. Recorder Number      Cap.      psi

Drilling Contractor Southwind Drilling, Inc. - Rig 1 Drill Collar Length      ft. I.D.      in.  
Mud Type Chemical Viscosity 55 Weight Pipe Length      ft. I.D.      in.  
Weight 9.1 Water Loss 6.4 cc. Drill Pipe Length 4,248 ft. I.D. 3 1/2 in.  
Solids 2,900 P.P.M. Test Tool Length 26 ft. Tool Size 3 1/2 - IF in.  
Mud: Make Bowen Serial Number No. 2 Anchor Length 76 ft. Size 4 1/2 - FH in.  
Flow Well Flow? No Reversed Out Yes Surface Choke Size 1 in. Bottom Choke Size 5/8 in.  
Main Hole Size 7 7/8 in. Tool Joint Size 4 1/2 - XH in.

Flow: 1st Open: Strong blow. Off bottom of bucket in 1 1/2 mins. Strong blow back during shut-in.  
2nd Open: Strong blow. Off bottom of bucket in 1 min. Gas to surface in 48 mins. Strong blow back during shut-in.

covered 2,060 ft. of gas cut oil with some slight cuts of mud circulated out = 29.252000 bbls. (Gravity: 35 @ 60°)  
covered 120 ft. of gassy muddy oil (below circulating sub) = 1.704000 bbls. (Grind out: 15%-gas; 40%-mud; 45%-oil)  
covered 2,180 ft. of TOTAL FLUID = 30.956000 bbls.  
covered      ft. of       
covered      ft. of       
Remarks Gas burned. Gas gauged at 3,700 CF/D using 1/2 in. orifice & ins. of water gauge.

Time Set Packer(s)	Time Started Off Bottom	Maximum Temperature
<u>7:37</u> <del>XXX</del> P.M.	<u>11:17</u> <del>XXX</del> P.M.	<u>130°</u>
Initial Hydrostatic Pressure	(A) <u>2097</u> P.S.I.	
Initial Flow Period	Minutes <u>10</u> (B) <u>166</u> P.S.I. to (C) <u>269</u> P.S.I.	
Initial Closed In Period	Minutes <u>30</u> (D) <u>1229</u> P.S.I.	
Initial Flow Period	Minutes <u>60</u> (E) <u>303</u> P.S.I. to (F) <u>780</u> P.S.I.	
Initial Closed In Period	Minutes <u>120</u> (G) <u>1145</u> P.S.I.	
Final Hydrostatic Pressure	(H) <u>2077</u> P.S.I.	



**DIAMOND TESTING**  
 P.O. Box 157  
 HOISINGTON, KANSAS 67544  
 (620) 653-7550 • (800) 542-7313

Page 2 of 3 Pages

**FLUID SAMPLE DATA**

Company Mull Drilling Co., Inc.

Lease & Well No. McWhirter "A" No. 1-28

Date 6-10-06 Sec. 28 Twp. 17 S Range 28 W

Formation Test No. 5 Interval Tested From 4,274 ft. to 4,350 ft. Total Depth 4,350 ft.

Formation Lansing/Kansas City "L"/Marmaton/Altamont "B"

	<u>MUD PIT</u>	<u>RECOVERY</u>
Viscosity	<u>55</u> CP	<u>--</u> CP
Weight	<u>9.1</u>	<u>--</u>
Water Loss	<u>6.4</u> CC	<u>6.0</u> CC
PH Factor	<u>10.5</u>	<u>10.5</u>

	<u>RESISTIVITY</u>	<u>CHLORIDE CONTENT</u>
Recovery Water	<u>-- @ -- °F.</u>	<u>--</u> ppm
Recovery Mud	<u>-- @ -- °F.</u>	<u>--</u> ppm
Recovery Mud Filtrate	<u>2.20 @ 30 °F.</u>	<u>3,300</u> ppm
Mud Pit Sample	<u>-- @ -- °F.</u>	<u>--</u> ppm
Mud Pit Sample Filtrate	<u>1.60 @ 90 °F.</u>	<u>3,000</u> ppm

Sample Taken By JOHN C. RIEDL

Witness By ROGER MARTIN

Remarks Pit filtrate triton dish chlorides were 2,900 Ppm  
Recovery filtrate triton dish chlorides were 3,000 Ppm

**RECEIVED**  
**SEP 28 2006**  
**KCC WICHITA**

## GENERAL INFORMATION

### Client Information:

Company: MULL DRILLING CO INC.

Contact: ERNIE MORRISON

Phone: Fax: e-mail:

### Site Information:

Contact: ROGER MARTIN

Phone: Fax: e-mail:

### Well Information:

Name: McWHIRTER "A" #1-28

Operator: MULL DRILLING CO INC

Location-Downhole: DST #5 4274 TO 4350

Location-Surface: S28/17S/28W LANE COUNTY

### Test Information:

Company: DIAMOND TESTING

Representative: JOHN RIEDL

Supervisor: ROGER MARTIN

Test Type: CONVENTIONAL

Job Number: D276

Test Unit: 2

Start Date: 2006/06/10

Start Time: 17:45:00

End Date: 2006/06/11

End Time: 05:20:00

Report Date: 2006/11/06

Prepared By: JOHN RIEDL

### Remarks:

Qualified By: ROGER MARTIN

REC: 2060' GCO (WITH SOME SLIGHT CUTS OF MUD) CIRCULATED OUT  
120' GMO (15% GAS 40% MUD 45% OIL) BELOW CIRC SUB  
2180' TOTAL FLUID RECOVERY IN DRILL PIPE  
GRAVITY OF OIL 35 @ 60  
GTS 48 MINUTES 2ND FLOW GUAGED 3,700CF/D

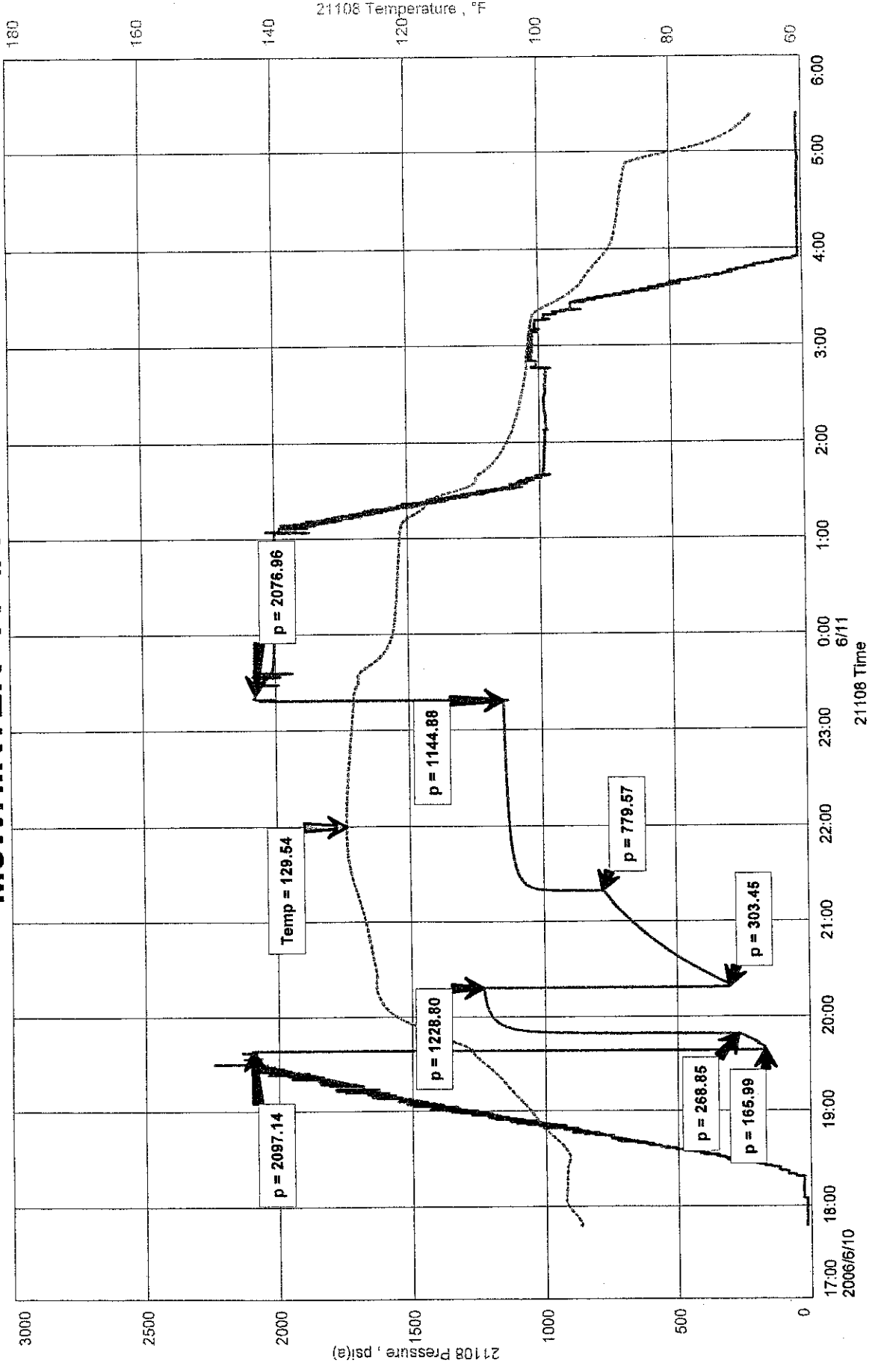
RECEIVED

SEP 28 2006

KCC WICHITA *Fast*

# MCWHIRTER "A" #1-28

DST #5 4274 TO 4350  
Start Test Date: 2006/06/10  
Final Test Date: 2006/06/11



MOLL  
 McWHIRTER #1-2D

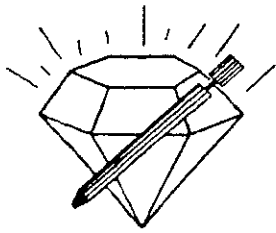
OST#S

RSC #11017  
 005005  
 LOL 4347



This is an actual photograph of recorder chart.

POINT	PRESSURE		Elec. Office Reading	PSI
	Field Reading			
(A) Initial Hydrostatic Mud	2097		2097	PSI
(B) First Initial Flow Pressure	166		166	PSI
(C) First Final Flow Pressure	269		269	PSI
(D) Initial Closed-in Pressure	1229		1229	PSI
(E) Second Initial Flow Pressure	303		303	PSI
(F) Second Final Flow Pressure	780		780	PSI
(G) Final Closed-in Pressure	1145		1145	PSI
(H) Final Hydrostatic Mud	2077		2077	PSI



**DIAMOND TESTING**  
 P.O. Box 157  
 HOISINGTON, KANSAS 67544  
 (620) 653-7550 • (800) 542-7313  
 STC 21108.D277

Company Mull Drilling Co., Inc. Lease & Well No. McWhirter "A" No. 1-28  
 Elevation 2756KB Formation Altamont/Ft. Scott/Cherokee Effective Pay      Ft. Ticket No. J1883  
 Date 6-12-06 Sec. 28 Twp. 17S Range 28W County      Lane      State Kansas  
 Test Approved By Roger Martin Diamond Representative John C. Riedl

Formation Test No. 6 Interval Tested from 4,344 ft. to 4,561 ft. Total Depth 4,561 ft.  
 Packer Depth 4,339 ft. Size 6 3/4 in. Packer Depth      ft. Size      in.  
 Packer Depth 4,344 ft. Size 6 3/4 in. Packer Depth      ft. Size      in.  
 Depth of Selective Zone Set      ft.

Top Recorder Depth (Inside) 4,347 ft. Recorder Number 21108 Cap. 5,000 psi  
 Bottom Recorder Depth (Outside) 4,558 ft. Recorder Number 11017 Cap. 4,000 psi  
 Below Straddle Recorder Depth      ft. Recorder Number      Cap.      psi

Drilling Contractor Southwind Drilling, Inc. - Rig 1 Drill Collar Length      ft. I.D.      in.  
 Mud Type Chemical Viscosity 51 Weight Pipe Length      ft. I.D.      in.  
 Weight 9.3 Water Loss 6.4 cc. Drill Pipe Length 4,318 ft. I.D. 3 1/2 in.  
 Chlorides 2,900 P.P.M. Test Tool Length 26 ft. Tool Size 3 1/2 - IF in.  
 Jars: Make Bowen Serial Number No. 2 Anchor Length 217 ft. Size 4 1/2 - FH in.  
 Did Well Flow? No Reversed Out No Surface Choke Size 1 in. Bottom Choke Size 5/8 in.  
 Main Hole Size 7 7/8 in. Tool Joint Size 4 1/2 - XH in.

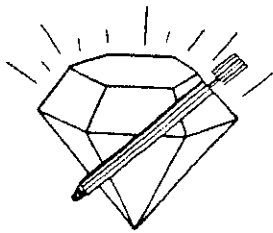
Blow: 1st Open: Weak, 3/8 in., blow steady throughout. No blow back during shut-in.  
 2nd Open: Weak, 1/2 in., blow decreasing to surface blow by end. No blow back during shut-in.

Recovered 80 ft. of gas in pipe  
 Recovered 40 ft. of slightly gassy oil cut mud = .568000 bbls. (Grind out: 1%-water; 5%-gas; 20%-oil; 74%-mud)  
 Recovered 40 ft. of TOTAL FLUID = .568000 bbls. (Chlorides: 3,000 Ppm)

Recovered      ft. of       
 Recovered      ft. of       
 Remarks Tool Sample Grind Out: 1%-water; 25%-oil; 74%-mud

**RECEIVED**  
**SEP 28 2006**  
**KCC WICHITA**

Time Set Packer(s)	<u>12:26</u>	<u>A.M.</u>	Time Started Off Bottom	<u>4:26</u>	<u>XXM.</u>	Maximum Temperature	<u>119°</u>
Initial Hydrostatic Pressure		<u>P.M.</u>		<u>2149</u>	<u>P.S.I.</u>		
Initial Flow Period	Minutes	<u>15</u>		<u>37</u>	<u>P.S.I.</u>	to (C)	<u>40</u> <u>P.S.I.</u>
Initial Closed In Period	Minutes	<u>45</u>		<u>862</u>	<u>P.S.I.</u>		
Final Flow Period	Minutes	<u>60</u>		<u>42</u>	<u>P.S.I.</u>	to (F)	<u>49</u> <u>P.S.I.</u>
Final Closed In Period	Minutes	<u>120</u>		<u>1051</u>	<u>P.S.I.</u>		
Final Hydrostatic Pressure				<u>2113</u>	<u>P.S.I.</u>		



**DIAMOND TESTING**  
 P.O. Box 157  
 HOISINGTON, KANSAS 67544  
 (620) 653-7550 • (800) 542-7313

Page 2 of 3 Pages

**FLUID SAMPLE DATA**

Company Mull Drilling Co., Inc.

Lease & Well No. McWhirter "A" No. 1-28

Date 6-12-06 Sec. 28 Twp. 17 S Range 28 W

Formation Test No. 6 Interval Tested From 4,344 ft. to 4,561 ft. Total Depth 4,561 ft.

Formation Altamont/Ft. Scott/Cherokee

	<u>MUD PIT</u>	<u>RECOVERY</u>
Viscosity	<u>51</u> CP	<u>--</u> CP
Weight	<u>9.3</u>	<u>--</u>
Water Loss	<u>6.4</u> CC	<u>10.0</u> CC
PH Factor	<u>10.5</u>	<u>8.0</u>

	<u>RESISTIVITY</u>	<u>CHLORIDE CONTENT</u>
Recovery Water	<u>-- @ -- °F.</u>	<u>--</u> ppm
Recovery Mud	<u>-- @ -- °F.</u>	<u>--</u> ppm
Recovery Mud Filtrate	<u>1.70 @ 85 °F.</u>	<u>3,000</u> ppm
Mud Pit Sample	<u>-- @ -- °F.</u>	<u>--</u> ppm
Mud Pit Sample Filtrate	<u>2.00 @ 70 °F.</u>	<u>3,100</u> ppm

Sample Taken By JOHN C. RIEDL

**RECEIVED**

Witness By ROGER MARTIN

**SEP 28 2006**

Remarks Pit filtrate triton dish chlorides were 2,900 Ppm  
Recovery filtrate triton dish chlorides were 3,100 Ppm

**KCC WICHITA**

## GENERAL INFORMATION

### Client Information:

Company: MULL DRILLING CO INC

Contact: ERNIE MORRISON

Phone: Fax: e-mail:

### Site Information:

Contact: ROGER MARTIN

Phone: Fax: e-mail:

### Well Information:

Name: McWHIRTER "A" #1-28

Operator: MULL DRILLING CO INC

Location-Downhole: DST #6 4344 TO 4561

Location-Surface: S28/17S/28W LANE COUNTY

### Test Information:

Company: DIAMOND TESTING

Representative: JOHN RIEDL

Supervisor: ROGER MARTIN

Test Type: CONVENTIONAL Job Number: D277

Test Unit: 2

Start Date: 2006/06/12 Start Time: 10:43:00

End Date: 2006/06/12 End Time: 19:30:00

Report Date: 2006/06/12 Prepared By: JOHN RIEDL

Qualified By: ROGER MARTIN

### Remarks:

RECOVERY: 80' GAS IN PIPE  
40' G+OCM (1%WATER 5%GAS 20%OIL 74%MUD)  
TOOL SAMPLE GRINDOUT (1%WATER 25%OIL 74%MUD)

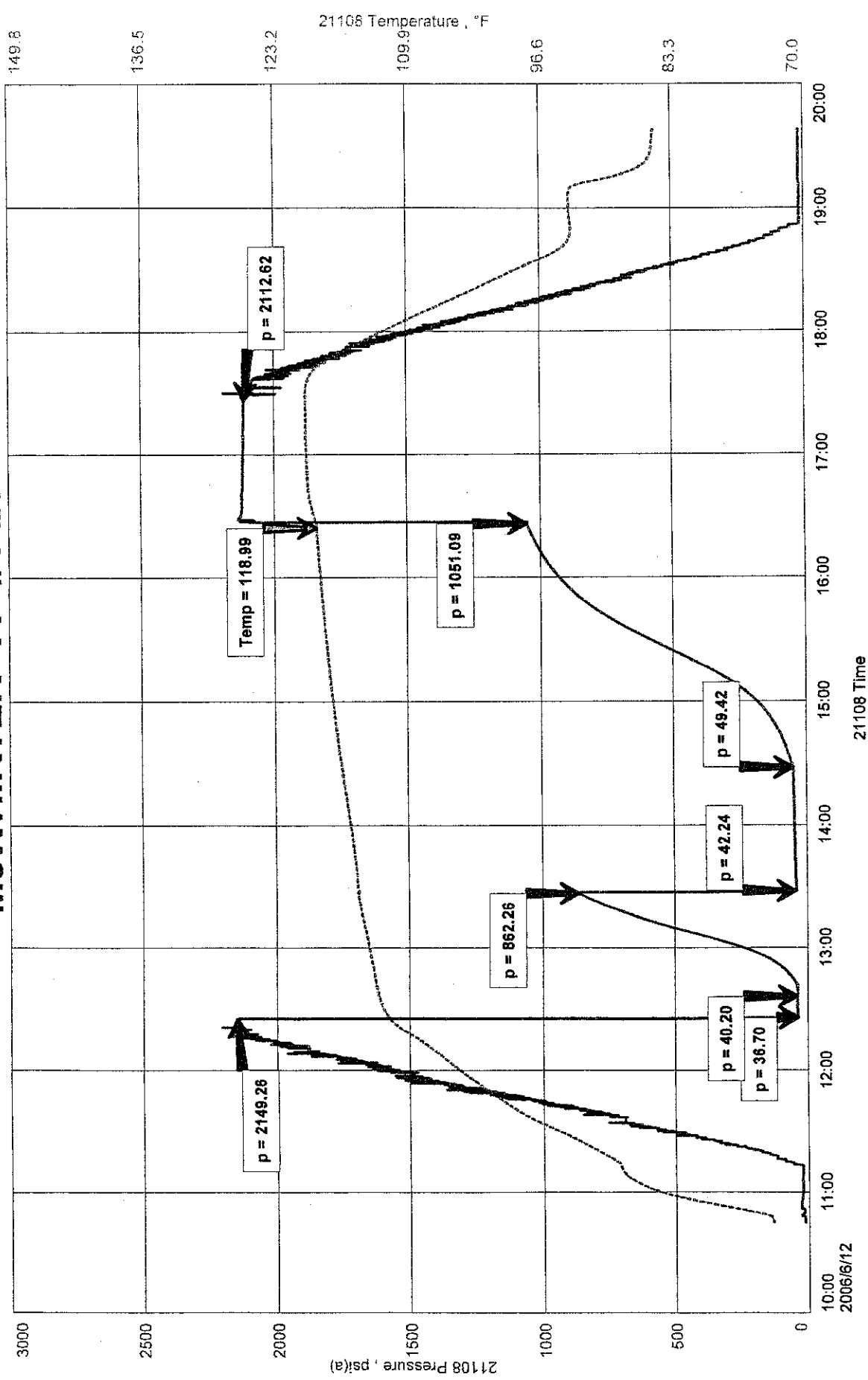
RECEIVED  
SEP 28 2006  
KCC WICHITA



MULL DRILLING COMPANY  
DST #6 4344 TO 4561  
Start Test Date: 2006/06/12  
Final Test Date: 2006/06/12

# McWHIRTER "A" #1-28

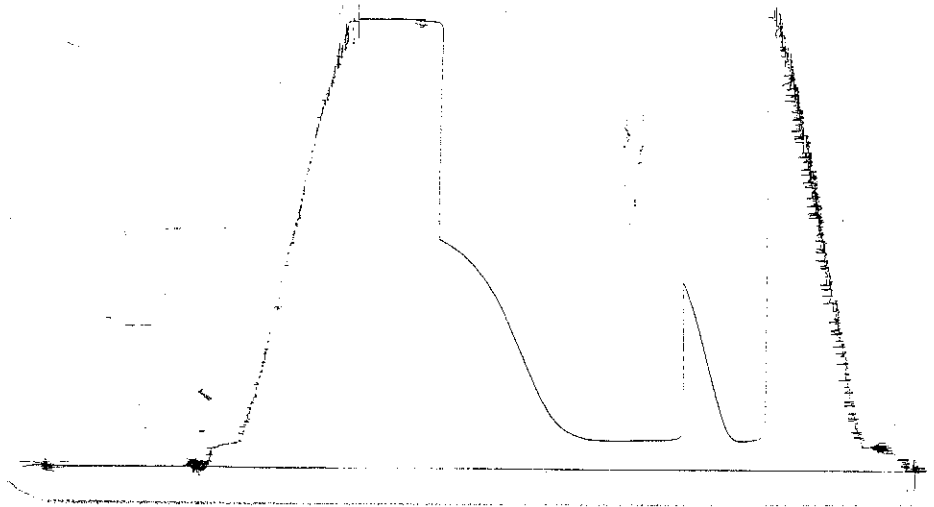
Formation: ALTA, FORT SCOTT, CHEROKEE  
Job Number: D27



MCSL  
 MEWHISTOR A #1-28

DST #6

ROCKWELL  
 OUT



This is an actual photograph of recorder chart.

POINT	PRESSURE		Elec. Office Reading	PSI
	Field Reading			
(A) Initial Hydrostatic Mud .....	2149	2149		PSI
(B) First Initial Flow Pressure .....	37	37		PSI
(C) First Final Flow Pressure .....	40	40		PSI
(D) Initial Closed-in Pressure .....	862	862		PSI
(E) Second Initial Flow Pressure .....	42	42		PSI
(F) Second Final Flow Pressure .....	49	49		PSI
(G) Final Closed-in Pressure .....	1051	1051		PSI
(H) Final Hydrostatic Mud .....	2113	2113		PSI