

15-101-22047

12-17s-28w

DIAMOND TESTING

P.O. Box 157
HOISINGTON, KANSAS 67544
(620) 653-7550 • (800) 542-7313
STC 30044.D 534

Company Mull Drilling Co., Inc. Lease & Well No. Schneider No. 1-12

Elevation 2753KB Formation Lansing/Kansas City Effective Pay Ft. Ticket No. J2137

Date 10-10-07 Sec. 12 Twp. 17S Range 28W County Lane State Kansas

Test Approved By Phil Askey Diamond Representative John C. Riedl

Formation Test No. 1 Interval Tested from 4,080 ft. to 4,105 ft. Total Depth 4,105 ft.

Packer Depth 4,075 ft. Size 6 3/4 in. Packer Depth ft. Size in.

Packer Depth 4,080 ft. Size 6 3/4 in. Packer Depth ft. Size in.

Depth of Selective Zone Set ft.

Top Recorder Depth (Inside) 4,083 ft. Recorder Number 30044 Cap. 5,000 psi

Bottom Recorder Depth (Outside) 4,102 ft. Recorder Number 11073 Cap. 4,000 psi

Below Straddle Recorder Depth ft. Recorder Number Cap. psi

Drilling Contractor W W Drilling, LLC - Rig 2 Drill Collar Length 120 ft. I.D. 2 1/4 in.

Mud Type Chemical Viscosity 52 Weight Pipe Length ft. I.D. in.

Weight 9.1 Water Loss 8.0 cc. Drill Pipe Length 3,936 ft. I.D. 3 1/2 in.

Chlorides 2,000 P.P.M. Test Tool Length 24 ft. Tool Size 3 1/2 - IF in.

Jars: Make Bowen Serial Number Not Run Anchor Length 25 ft. Size 4 1/2 - FH in.

Did Well Flow? No Reversed Out No Surface Choke Size 1 in. Bottom Choke Size 5/8 in.

Main Hole Size 7 7/8 in. Tool Joint Size 4 1/2 - XH in.

Blow: 1st Open: Strong, 12 in., blow. Off bottom of bucket in 4 mins. Fair, 4 in., blow back during shut-in.
2nd Open: Strong blow. Off bottom of bucket in 5 mins. Good, 7 in., blow back during shut-in.

Recovered 1,100 ft. of gas in pipe

Recovered 720 ft. of gas cut oil = 3.542400 bbls. (Grind out: 10%-gas; 90%-oil) Gravity: 31 @ 60°

Recovered 720 ft. of TOTAL FLUID = 3.542400 bbls.

Recovered ft. of

Recovered ft. of

Remarks

Time Set Packer(s) 6:35 ^{XXM.} P.M. Time Started Off Bottom 9:30 ^{XXM.} P.M. Maximum Temperature 127°

Initial Hydrostatic Pressure (A) 1962 P.S.I.

Initial Flow Period Minutes 10 (B) 22 P.S.I. to (C) 78 P.S.I.

Initial Closed In Period Minutes 30 (D) 983 P.S.I.

Final Flow Period Minutes 45 (E) 91 P.S.I. to (F) 247 P.S.I.

Final Closed In Period Minutes 90 (G) 920 P.S.I.

Final Hydrostatic Pressure (H) 1934 P.S.I.

GENERAL INFORMATION

Client Information:

Company: MULLDRILLING CO INC
Contact: ERNIE MORRISON
Phone: Fax: e-mail:

Site Information:

Contact: PHIL ASKEY
Phone: Fax: e-mail:

Well Information:

Name: SCHNEIDER #1-12
Operator: MULL DRILLING CO INC
Location-Downhole: DST #1 4080 TO 4105
Location-Surface: S12W/17S/28W LANE COUN TY

Test Information:

Company: DIAMOND TESTING
Representative: JOHN RIEDL
Supervisor: PHIL ASKEY
Test Type: CONVENTIONAL Job Number: D534
Test Unit: 2
Start Date: 2007/10/10 Start Time: 16:37:00
End Date: 2007/10/11 End Time: 00:20:00
Report Date: 2007/10/10 Prepared By: JOHN RIEDL
Qualified By: PHIL ASKEY

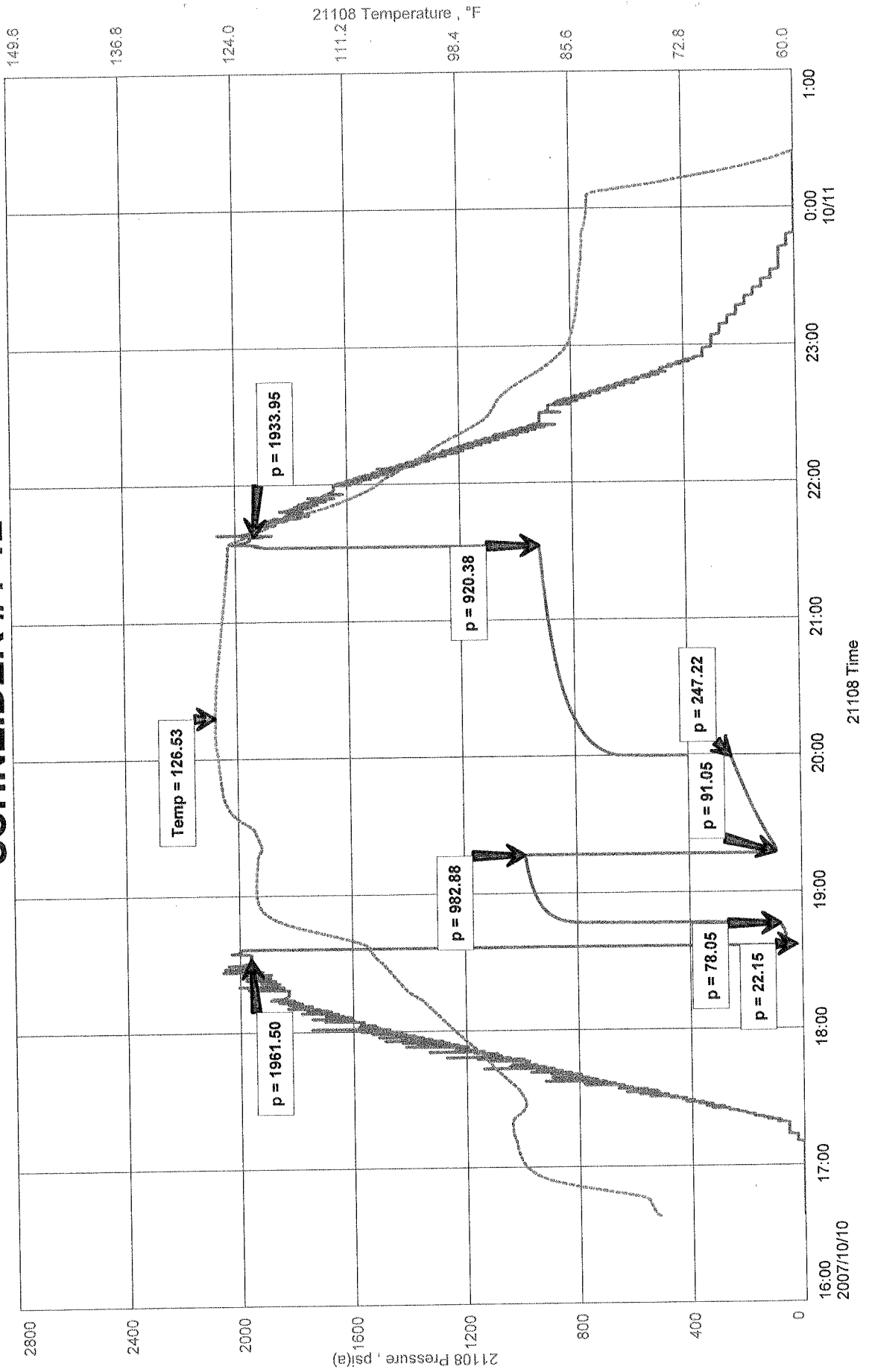
Remarks:

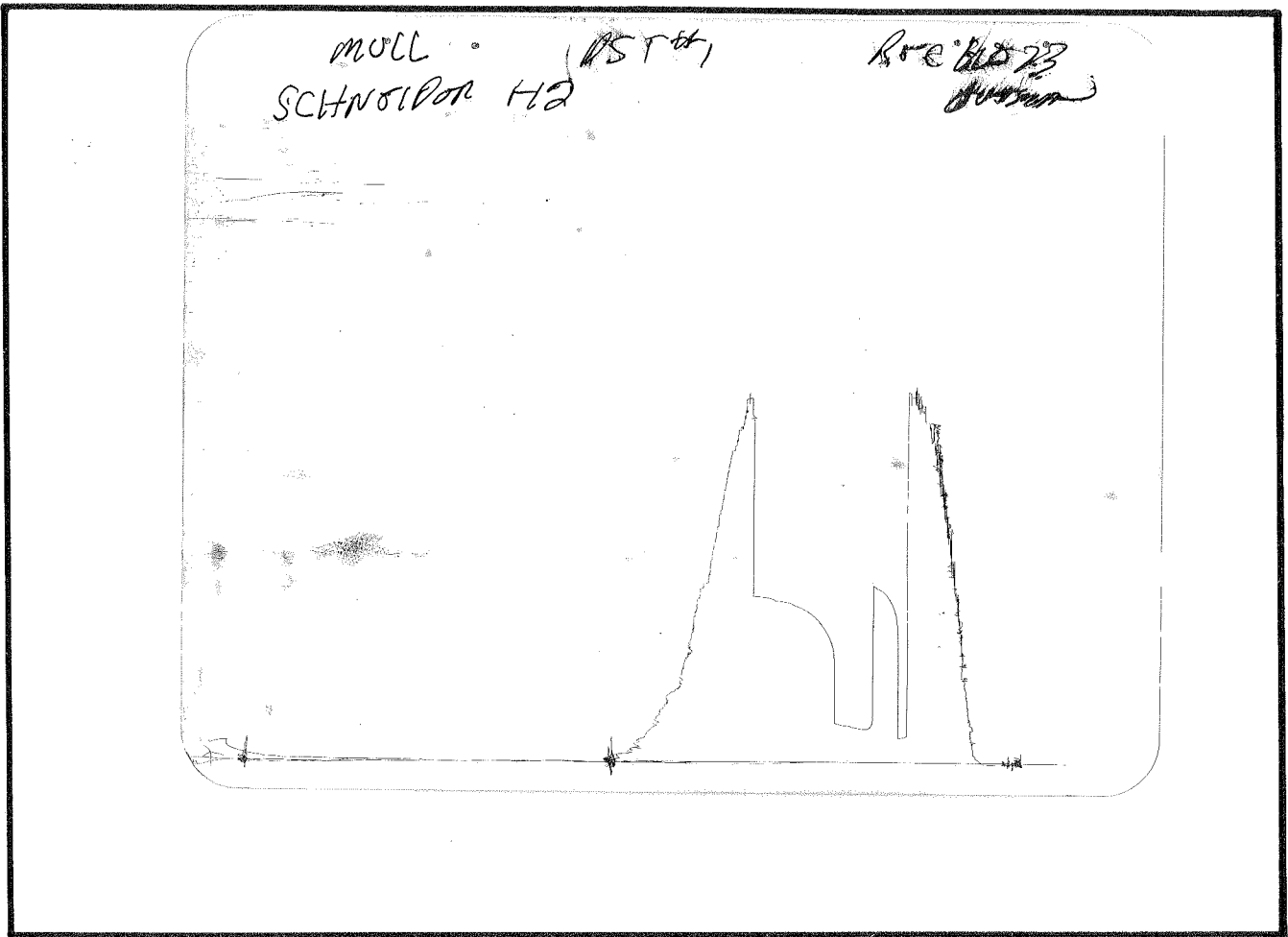
RECOVERY: 1100' GAS IN PIPE
720' GAS CUT OIL

SCHNEIDER #1-12
Formation: LKC E,F
Job Number: D534

MULLDRILLING CO INC
DST #1 4080 TO 4105
Start Test Date: 2007/10/10
Final Test Date: 2007/10/11

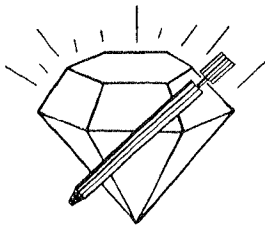
SCHNEIDER #1-12





This is an actual photograph of recorder chart.

POINT	PRESSURE		Elec. Office Reading	PSI
	Field Reading			
(A) Initial Hydrostatic Mud	1962	1962		PSI
(B) First Initial Flow Pressure	22	22		PSI
(C) First Final Flow Pressure	78	78		PSI
(D) Initial Closed-in Pressure	983	983		PSI
(E) Second Initial Flow Pressure	91	91		PSI
(F) Second Final Flow Pressure	247	247		PSI
(G) Final Closed-in Pressure	920	920		PSI
(H) Final Hydrostatic Mud	1934	1934		PSI



DIAMOND TESTING

P.O. Box 157

HOISINGTON, KANSAS 67544

(620) 653-7550 • (800) 542-7313

STC 30044.D 535

Company Mull Drilling Co., Inc. Lease & Well No. Schneider No. 1-12
 Elevation 2753KB Formation Lansing "G" Effective Pay -- Ft. Ticket No. J2138
 Date 10-11-07 Sec. 12 Twp. 17S Range 28W County Lane State Kansas

Test Approved By Phil Askey Diamond Representative John C. Riedl

Formation Test No. 2 Interval Tested from 4,114 ft. to 4,132 ft. Total Depth 4,132 ft.

Packer Depth 4,109 ft. Size 6 3/4 in. Packer Depth -- ft. Size -- in.

Packer Depth 4,114 ft. Size 6 3/4 in. Packer Depth -- ft. Size -- in.

Depth of Selective Zone Set ft.

Top Recorder Depth (Inside) 4,117 ft. Recorder Number 30044 Cap. 5,000 psi

Bottom Recorder Depth (Outside) 4,129 ft. Recorder Number 11073 Cap. 4,000 psi

Below Straddle Recorder Depth ft. Recorder Number Cap. psi

Drilling Contractor WW Drilling, LLC - Rig 2 Drill Collar Length 120 ft. I.D. 2 1/4 in.

Mud Type Chemical Viscosity 49 Weight Pipe Length -- ft. I.D. -- in.

Weight 9.3 Water Loss 7.2 cc. Drill Pipe Length 3,970 ft. I.D. 3 1/2 in.

Chlorides 2,300 P.P.M. Test Tool Length 24 ft. Tool Size 3 1/2 - IF in.

Jars: Make Bowen Serial Number Not Run Anchor Length 18 ft. Size 4 1/2 - FH in.

Did Well Flow? No Reversed Out Yes Surface Choke Size 1 in. Bottom Choke Size 5/8 in.

Main Hole Size 7 7/8 in. Tool Joint Size 4 1/2 - XH in.

Blow: 1st Open: Strong blow. Off bottom of bucket in 1 1/2 mins. Weak blow back during shut-in.
2nd Open: Strong blow. Off bottom of bucket in 1 1/2 mins. Gas to surface in 20 mins. during final shut-in. Strong blow back during shut-in.

Recovered 450 ft. of gas cut oil = 6.390000 bbls. (Grind out: 10%-gas; 90%-oil) Gravity: 28 @ 60°

Recovered 1,700 ft. of gas cut water = 23.026400 bbls. (Grind out: 10%-gas; 90%-water) Chlorides: 36,000 Ppm

Recovered 2,150 ft. of TOTAL FLUID = 29.416400 bbls.

Recovered ft. of

Recovered ft. of

Remarks

Time Set Packer(s) 9:15 ~~XXX~~ A.M. Time Started Off Bottom 12:10 ~~XXX~~ P.M. Maximum Temperature 127°

Initial Hydrostatic Pressure (A) 1987 P.S.I.

Initial Flow Period Minutes 10 (B) 119 P.S.I. to (C) 396 P.S.I.

Initial Closed In Period Minutes 30 (D) 1055 P.S.I.

Final Flow Period Minutes 45 (E) 415 P.S.I. to (F) 969 P.S.I.

Final Closed In Period Minutes 90 (G) 1060 P.S.I.

Final Hydrostatic Pressure (H) 1961 P.S.I.

GENERAL INFORMATION

Client Information:

Company: MULL DRILLING CO INC
Contact: ERNIE MORRISON
Phone: Fax: e-mail:

Site Information:

Contact: PHIL ASKEY
Phone: Fax: e-mail:

Well Information:

Name: SCHNEIDER #1-12
Operator: MULL DRILLING CO INC
Location-Downhole: DST #2 4114 4132
Location-Surface: S12/17S/28W LANE COUNTY

Test Information:

Company: DIAMOND TESTING
Representative: JOHN RIEDL
Supervisor: PHIL ASKEY
Test Type: CONVENTIONAL Job Number: D535
Test Unit: 2
Start Date: 2007/10/11 Start Time: 07:04:00
End Date: 2007/10/11 End Time: 16:20:00
Report Date: 2007/10/11 Prepared By: JOHN RIEDL

Remarks:

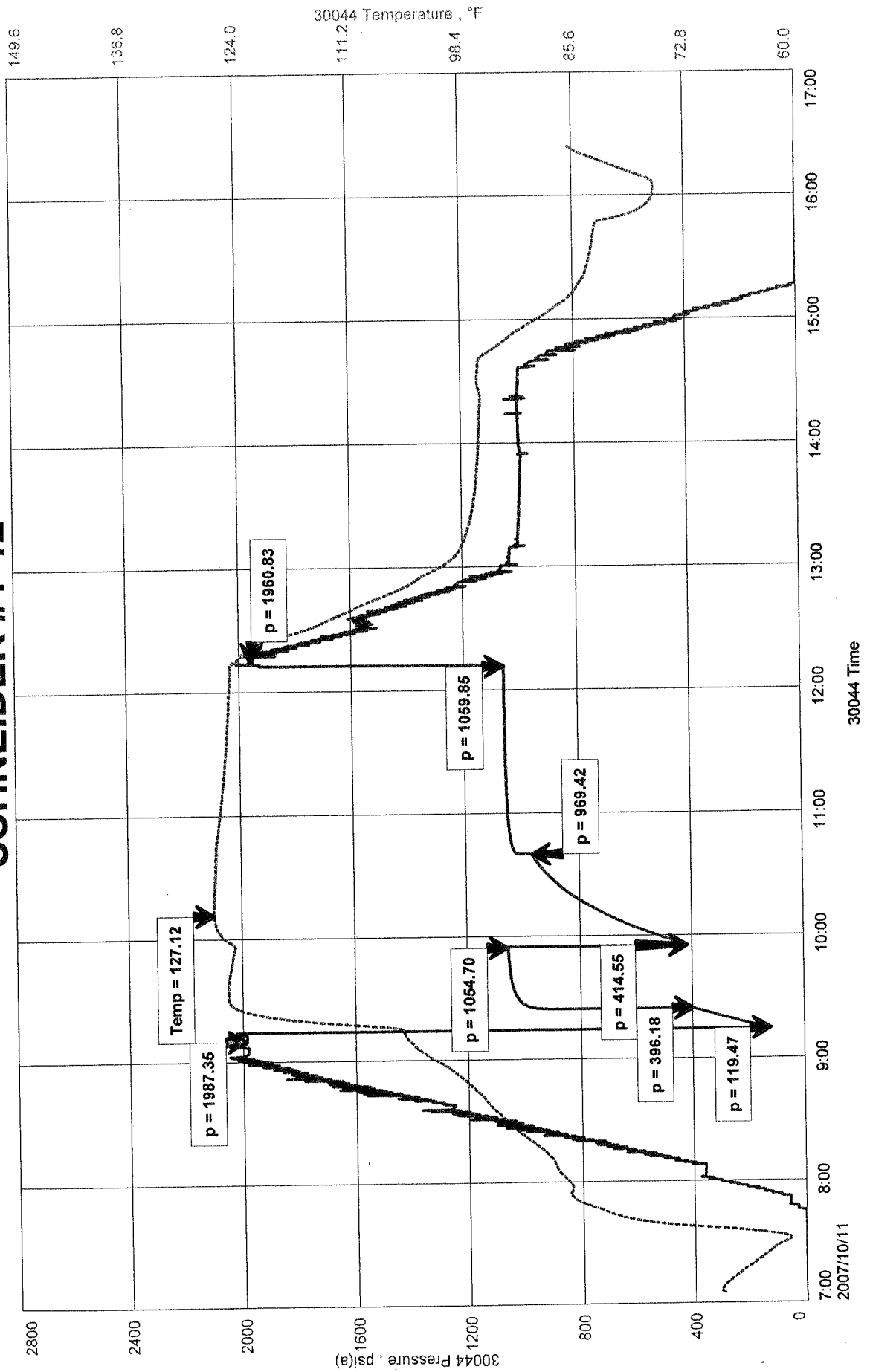
RECOVERY:450' GAS CUT OIL
1700' WATER

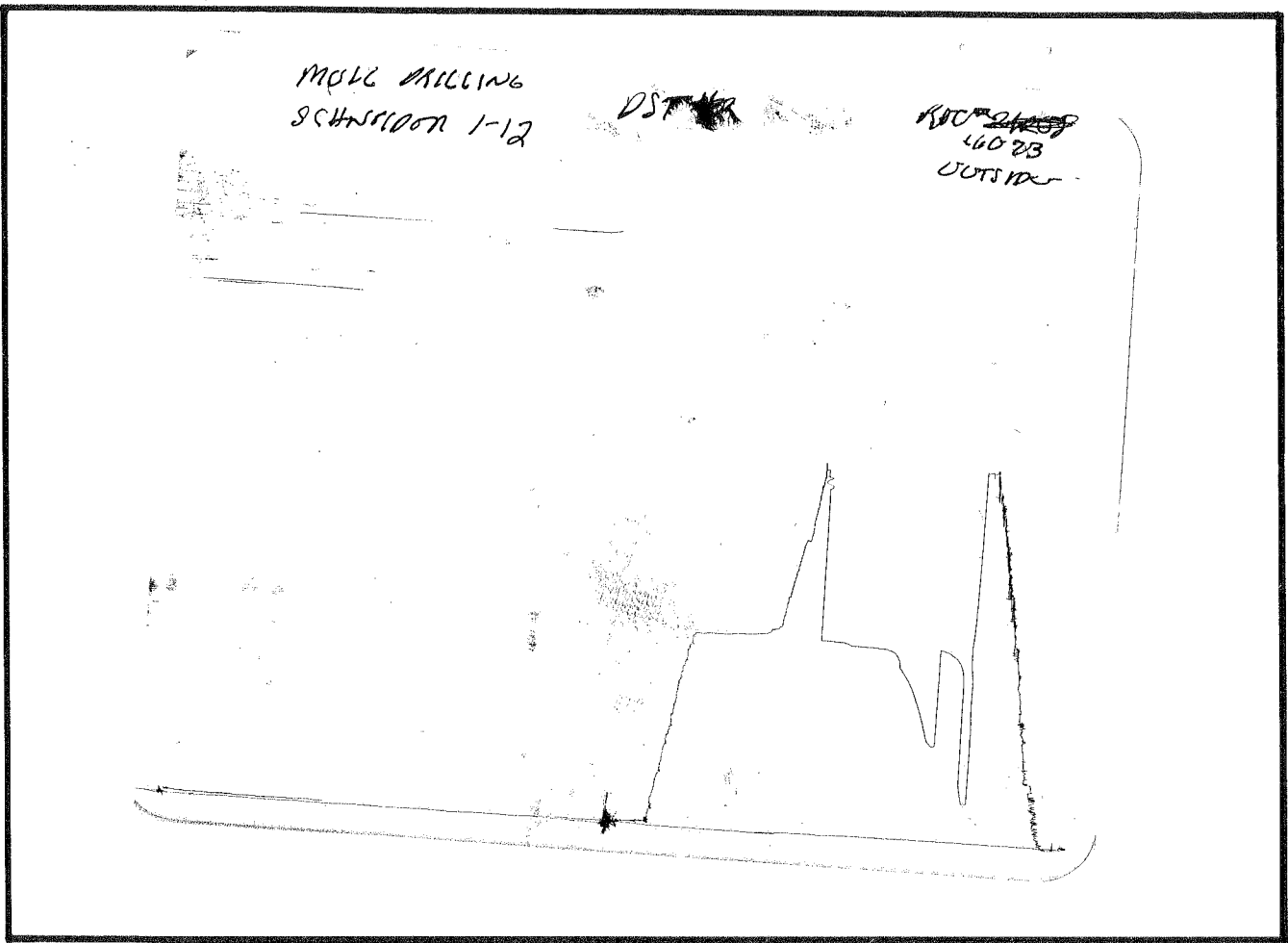
Qualified By: PHIL ASKEY

SCHNEIDER #1-12
Formation: LKC "G"
Job Number: D535

MULL DRILLING CO INC
DST #2 4114 4132
Start Test Date: 2007/10/11
Final Test Date: 2007/10/11

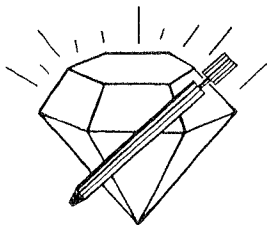
SCHNEIDER #1-12





This is an actual photograph of recorder chart.

POINT	PRESSURE		Elec. Office Reading	PSI
	Field Reading			
(A) Initial Hydrostatic Mud	1987	1987		PSI
(B) First Initial Flow Pressure.....	119	119		PSI
(C) First Final Flow Pressure	396	396		PSI
(D) Initial Closed-in Pressure	1055	1055		PSI
(E) Second Initial Flow Pressure	415	415		PSI
(F) Second Final Flow Pressure.....	969	969		PSI
(G) Final Closed-in Pressure.....	1060	1060		PSI
(H) Final Hydrostatic Mud	1961	1961		PSI



DIAMOND TESTING

P.O. Box 157

HOISINGTON, KANSAS 67544

(620) 653-7550 • (800) 542-7313

STC 30044.D 536

Company Mull Drilling Co., Inc. Lease & Well No. Schneider No. 1-12

Elevation 2753KB Formation Lansing/Kansas City "H" - "I" Effective Pay -- Ft. Ticket No. J2139

Date 10-12-07 Sec. 12 Twp. 17S Range 28W County Lane State Kansas

Test Approved By Phil Askey Diamond Representative John C. Riedl

Formation Test No. 3 Interval Tested from 4,183 ft. to 4,226 ft. Total Depth 4,226 ft.

Packer Depth 4,178 ft. Size 6 3/4 in. Packer Depth -- ft. Size -- in.

Packer Depth 4,183 ft. Size 6 3/4 in. Packer Depth -- ft. Size -- in.

Depth of Selective Zone Set ft.

Top Recorder Depth (Inside) 4,186 ft. Recorder Number 30044 Cap. 5,000 psi

Bottom Recorder Depth (Outside) 4,223 ft. Recorder Number 11073 Cap. 4,000 psi

Below Straddle Recorder Depth ft. Recorder Number Cap. psi

Drilling Contractor WW Drilling, LLC - Rig 2 Drill Collar Length 120 ft. I.D. 2 1/4 in.

Mud Type Chemical Viscosity 48 Weight Pipe Length -- ft. I.D. -- in.

Weight 9.2 Water Loss 7.2 cc. Drill Pipe Length 4,039 ft. I.D. 3 1/2 in.

Chlorides 2,300 P.P.M. Test Tool Length 24 ft. Tool Size 3 1/2 - IF in.

Jars: Make Bowen Serial Number Not Run Anchor Length 43 ft. Size 4 1/2 - FH in.

Did Well Flow? No Reversed Out No Surface Choke Size 1 in. Bottom Choke Size 5/8 in.

Main Hole Size 7 7/8 in. Tool Joint Size 4 1/2 - XH in.

Blow: 1st Open: Weak, 2 in., blow. No blow back during shut-in.

2nd Open: Strong blow. Off bottom of bucket in 28 mins. No blow back during shut-in.

Recovered 50 ft. of gas in pipe

Recovered 130 ft. of gas cut muddy oil = .732400 bbls. (Grind out: 15%-gas; 20%-mud; 65%-oil)

Recovered 130 ft. of TOTAL FLUID = .732400 bbls.

Recovered ft. of

Recovered ft. of

Remarks

Time Set Packer(s) 5:10 ~~P.M.~~ ^{A.M.} Time Started Off Bottom 9:40 ~~P.M.~~ ^{A.M.} Maximum Temperature 118°

Initial Hydrostatic Pressure (A) 2044 P.S.I.

Initial Flow Period Minutes 10 (B) 5 P.S.I. to (C) 16 P.S.I.

Initial Closed In Period Minutes 30 (D) 1159 P.S.I.

Final Flow Period Minutes 60 (E) 19 P.S.I. to (F) 51 P.S.I.

Final Closed In Period Minutes 120 (G) 1192 P.S.I.

Final Hydrostatic Pressure (H) 2013 P.S.I.

GENERAL INFORMATION

Client Information:

Company: MULL DRILLING CO INC
Contact: ERNIE MORRISON
Phone: Fax: e-mail:

Site Information:

Contact: PHIL ASKEY
Phone: Fax: e-mail:

Well Information:

Name: SCHNEIDER #1-12
Operator: MULL DRILLING CO INC
Location-Downhole: DST #3 4183 TO 4226
Location-Surface: S12/17S/28W LANE COUNTY

Test Information:

Company: DIAMOND TESTING
Representative: JOHN RIEDL
Supervisor: PHIL ASKEY
Test Type: CONVENTIONAL Job Number: D536
Test Unit: 2
Start Date: 2007/11/12 Start Time: 03:12:00
End Date: 2007/11/12 End Time: 10:50:00
Report Date: 2007/10/12 Prepared By: JOHN RIEDL
Qualified By: PHIL ASKEY

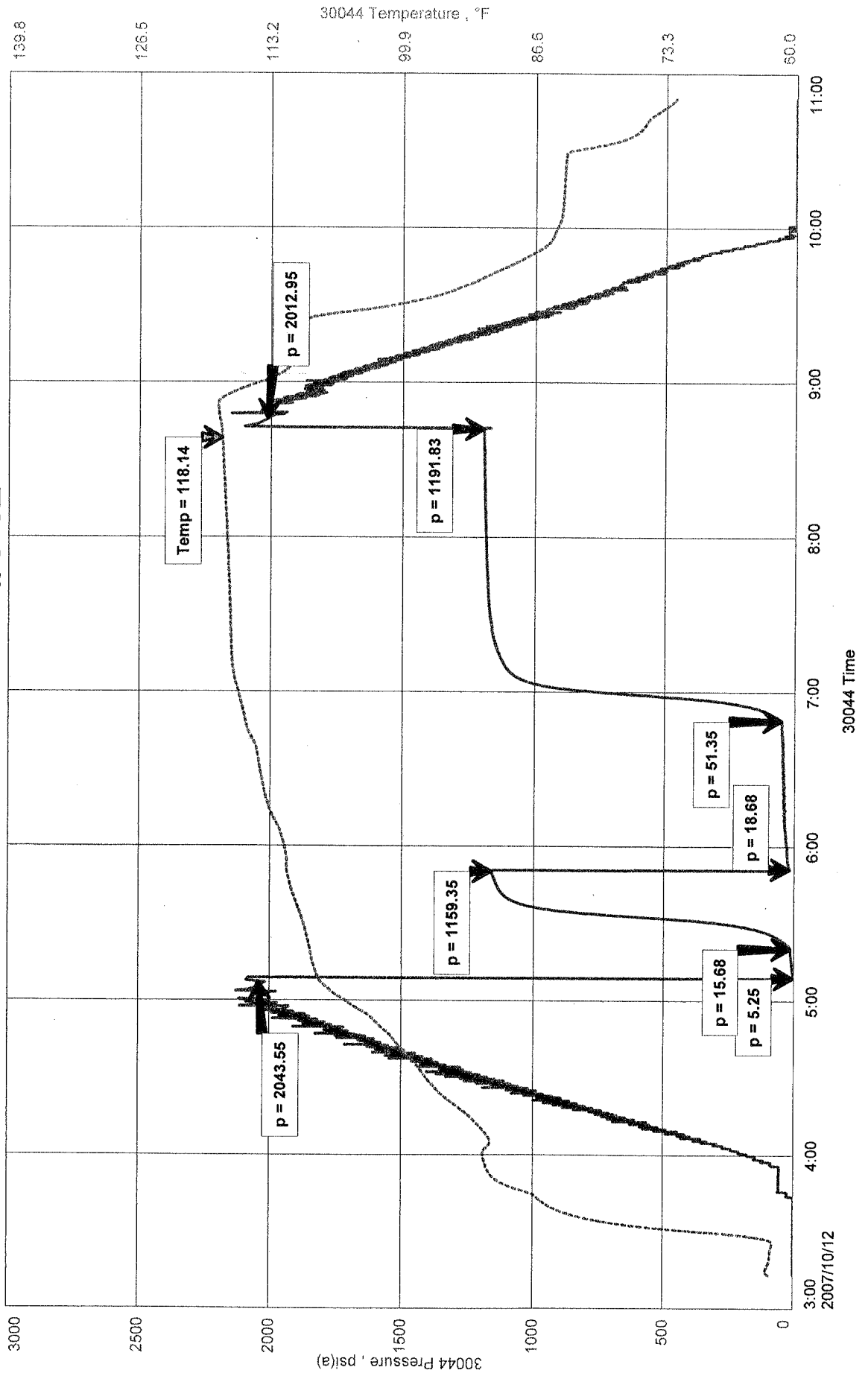
Remarks:

RECOVERY: 50' GAS IN PIPE
130' GAS CUT MUDDY OIL

SCHNEIDER #1-12
 Formation: LKC "H,1"
 Job Number: D536

MULL DRILLING CO INC
 DST #3 4183 TO 4226
 Start Test Date: 2007/11/12
 Final Test Date: 2007/11/12

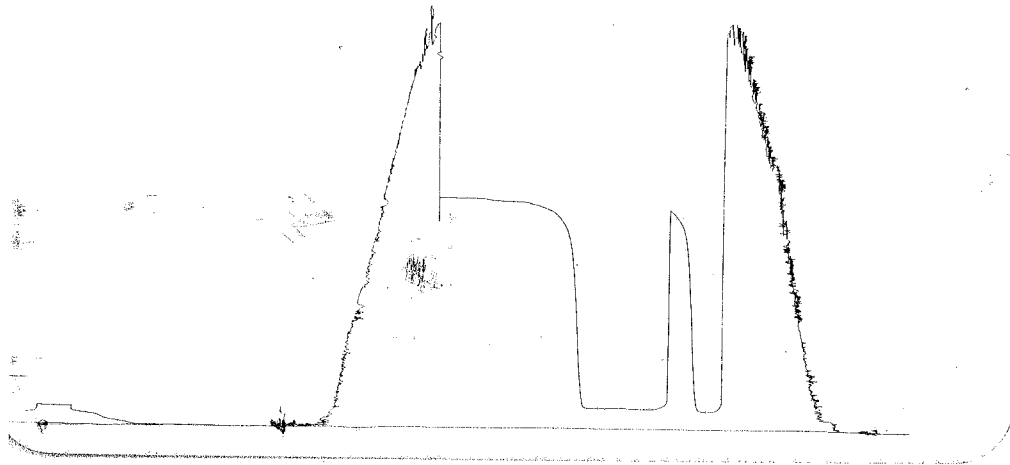
SCHNEIDER #1-12



MOUL DRILL
SCHWIDTR #1-12

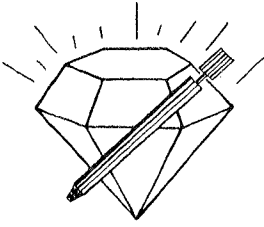
OST #3

ROC #11073
OUTSIDE



This is an actual photograph of recorder chart.

POINT	PRESSURE		PSI
	Field Reading	Elec. Office Reading	
(A) Initial Hydrostatic Mud	2044	2044	PSI
(B) First Initial Flow Pressure	5	5	PSI
(C) First Final Flow Pressure	16	16	PSI
(D) Initial Closed-in Pressure	1159	1159	PSI
(E) Second Initial Flow Pressure	19	19	PSI
(F) Second Final Flow Pressure	51	51	PSI
(G) Final Closed-in Pressure	1192	1192	PSI
(H) Final Hydrostatic Mud	2013	2013	PSI



DIAMOND TESTING
P.O. Box 157
HOISINGTON, KANSAS 67544
(620) 653-7550 • (800) 542-7313
STC 30044.D 537

Company Mull Drilling Co., Inc. Lease & Well No. Schneider No. 1-12
Elevation 2753KB Formation Lansing/Kansas City "J" Effective Pay -- Ft. Ticket No. J2140
Date 10-12-07 Sec. 12 Twp. 17S Range 28W County Lane State Kansas
Test Approved By Phil Askey Diamond Representative John C. Riedl

Formation Test No. 4 Interval Tested from 4,240 ft. to 4,260 ft. Total Depth 4,260 ft.
Packer Depth 4,235 ft. Size 6 3/4 in. Packer Depth -- ft. Size -- in.
Packer Depth 4,240 ft. Size 6 3/4 in. Packer Depth -- ft. Size -- in.
Depth of Selective Zone Set ft.

Top Recorder Depth (Inside) 4,243 ft. Recorder Number 30044 Cap. 5,000 psi
Bottom Recorder Depth (Outside) 4,257 ft. Recorder Number 11073 Cap. 4,000 psi
Below Straddle Recorder Depth ft. Recorder Number Cap. psi

Drilling Contractor WW Drilling, LLC - Rig 2 Drill Collar Length 120 ft. I.D. 2 1/4 in.
Mud Type Chemical Viscosity 50 Weight Pipe Length -- ft. I.D. -- in.
Weight 9.4 Water Loss 9.6 cc. Drill Pipe Length 4,096 ft. I.D. 3 1/2 in.
Chlorides 3,000 P.P.M. Test Tool Length 24 ft. Tool Size 3 1/2 - IF in.
Jars: Make Bowen Serial Number Not Run Anchor Length 20 ft. Size 4 1/2 - FH in.
Did Well Flow? No Reversed Out No Surface Choke Size 1 in. Bottom Choke Size 5/8 in.
Main Hole Size 7 7/8 in. Tool Joint Size 4 1/2 - XH in.

Blow: 1st Open: Strong, 12 in., blow. Off bottom of bucket in 3 mins. Good, 7 in., blow back during shut-in.
2nd Open: Strong, 10 in., blow. Off bottom of bucket in 8 mins. Strong, 10 in., blow back during shut-in.

Recovered 1,000 ft. of gas in pipe
Recovered 150 ft. of clean gassy oil = 2.130000 bbls. (Grind out: 20%-gas; 80%-oil) Gravity: 36 @ 60°
Recovered 300 ft. of water = 3.146400 bbls. (Chlorides: 50,000 Ppm)
Recovered 450 ft. of TOTAL FLUID = 5.276400 bbls.
Recovered ft. of

Remarks

Time Set Packer(s) 7:20 ~~XXX~~ P.M. Time Started Off Bottom 10:15 ~~XXX~~ P.M. Maximum Temperature 128°
Initial Hydrostatic Pressure (A) 2030 P.S.I.
Initial Flow Period Minutes 10 (B) 20 P.S.I. to (C) 79 P.S.I.
Initial Closed In Period Minutes 30 (D) 1012 P.S.I.
Final Flow Period Minutes 45 (E) 93 P.S.I. to (F) 191 P.S.I.
Final Closed In Period Minutes 90 (G) 1005 P.S.I.
Final Hydrostatic Pressure (H) 1999 P.S.I.

GENERAL INFORMATION

Client Information:

Company: MULL DRILLING CO INC
Contact: ERNIE MORRISON
Phone: Fax: e-mail:

Site Information:

Contact: PHIL ASKEY
Phone: Fax: e-mail:

Well Information:

Name: SCHNEIDER #1-12
Operator: MULL DRILLING CO INC
Location-Downhole: DST #4 4040 TO 4060
Location-Surface: S12/17S/28W LANE COUNTY

Test Information:

Company: DIAMOND TESTING
Representative: JOHN RIEDL
Supervisor: PHIL ASKEY
Test Type: CONVENTIONAL Job Number: D537
Test Unit: 2
Start Date: 2007/10/12 Start Time: 17:30:00
End Date: 2007/10/13 End Time: 00:40:00
Report Date: 2007/10/13 Prepared By: JOHN RIEDL

Remarks:

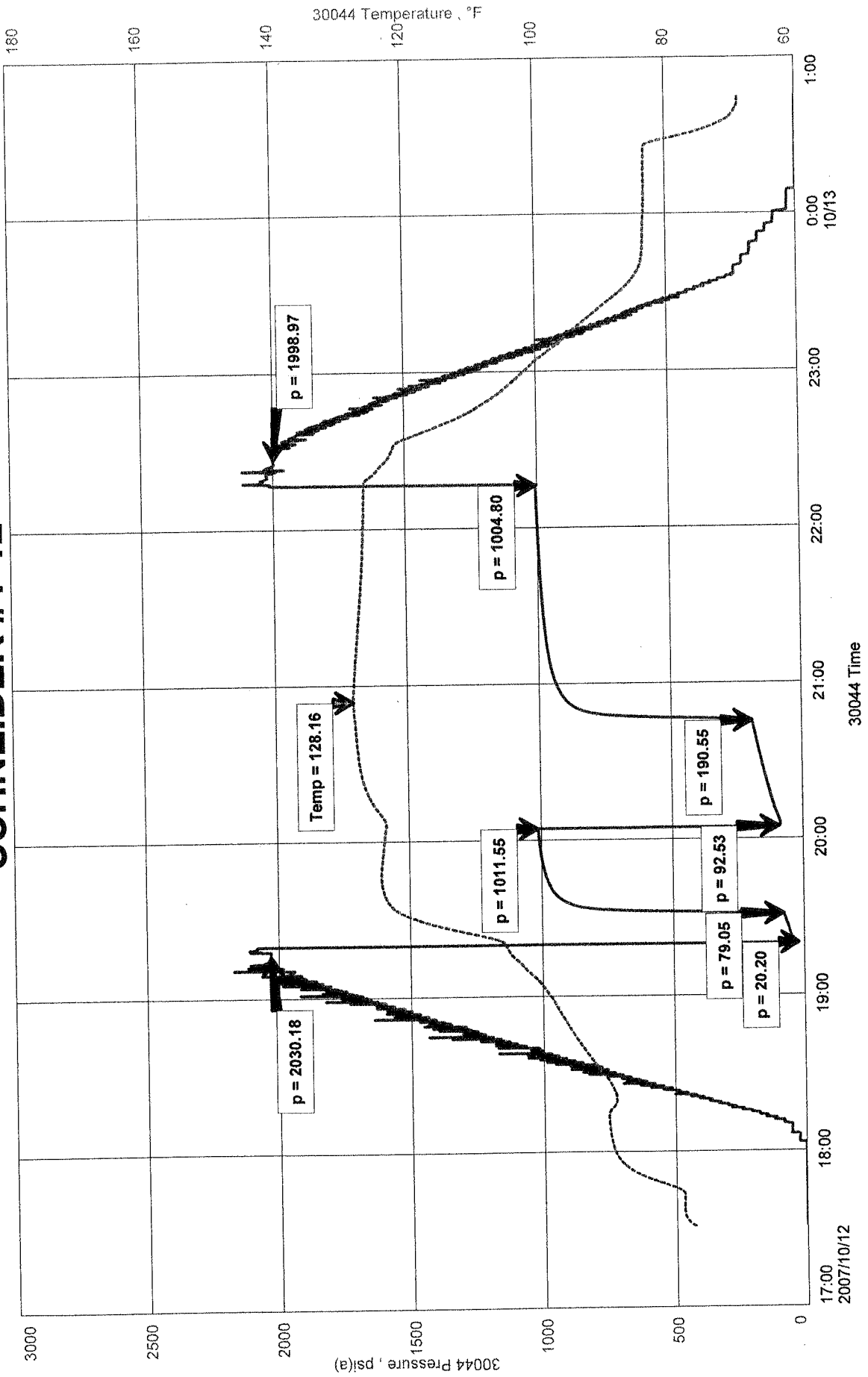
Qualified By: PHIL ASKEY

RECOVERY: 1000' GIP
150' GASSY OIL
300' WATER

SCHNEIDER #1-12
Formation: LKC "J"
Job Number: D537

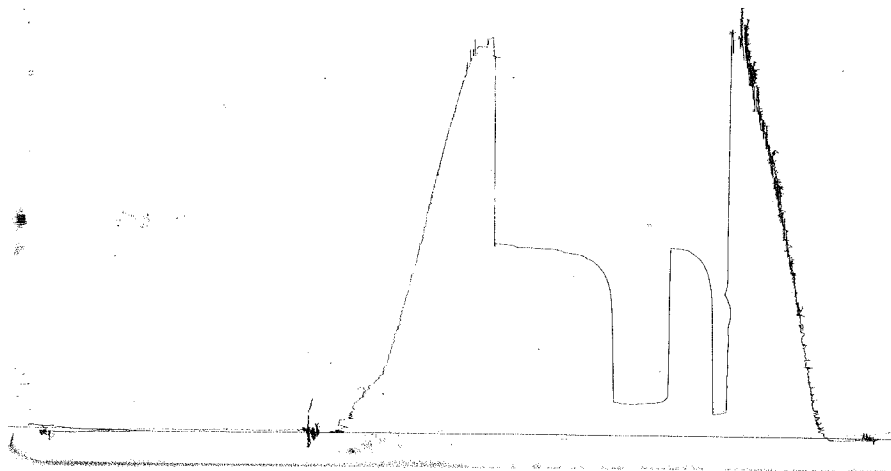
MULL DRILLING CO INC
DST #4 4040 TO 4060
Start Test Date: 2007/10/12
Final Test Date: 2007/10/13

SCHNEIDER #1-12



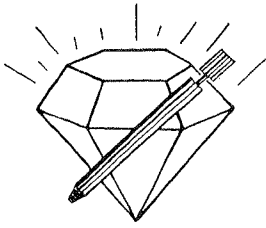
SCANNING #102 DST #4
MULL DRILLING INC

REC #11073
OCT 5 1965



This is an actual photograph of recorder chart.

POINT	PRESSURE		PSI
	Field Reading	Elec. Office Reading	
(A) Initial Hydrostatic Mud	2030	2030	PSI
(B) First Initial Flow Pressure	20	20	PSI
(C) First Final Flow Pressure	79	79	PSI
(D) Initial Closed-in Pressure	1012	1012	PSI
(E) Second Initial Flow Pressure	93	93	PSI
(F) Second Final Flow Pressure	191	191	PSI
(G) Final Closed-in Pressure	1005	1005	PSI
(H) Final Hydrostatic Mud	1999	1999	PSI



DIAMOND TESTING

P.O. Box 157
HOISINGTON, KANSAS 67544
(620) 653-7550 • (800) 542-7313
STC 30044.D 538

Company Mull Drilling Co., Inc. Lease & Well No. Schneider No. 1-12

Elevation 2753KB Formation Lansing/Kansas City 'K' - 'L' Effective Pay -- Ft. Ticket No. J2141

Date 10-13-07 Sec. 12 Twp. 17S Range 28W County Lane State Kansas

Test Approved By Phil Askey Diamond Representative John C. Riedl

Formation Test No. 5 Interval Tested from 4,268 ft. to 4,335 ft. Total Depth 4,335 ft.

Packer Depth 4,263 ft. Size 6 3/4 in. Packer Depth -- ft. Size -- in.

Packer Depth 4,268 ft. Size 6 3/4 in. Packer Depth -- ft. Size -- in.

Depth of Selective Zone Set ft.

Top Recorder Depth (Inside) 4,271 ft. Recorder Number 30044 Cap. 5,000 psi

Bottom Recorder Depth (Outside) 4,332 ft. Recorder Number 11073 Cap. 4,000 psi

Below Straddle Recorder Depth ft. Recorder Number Cap. psi

Drilling Contractor WW Drilling, LLC - Rig 2 Drill Collar Length 120 ft. I.D. 2 1/4 in.

Mud Type Chemical Viscosity 56 Weight Pipe Length -- ft. I.D. -- in.

Weight 9.3 Water Loss 8.0 cc. Drill Pipe Length 4,124 ft. I.D. 3 1/2 in.

Chlorides 3,500 P.P.M. Test Tool Length 24 ft. Tool Size 3 1/2 - IE in.

Jars: Make Bowen Serial Number Not Run Anchor Length 67 ft. Size 4 1/2 - FH in.

Did Well Flow? No Reversed Out No Surface Choke Size 1 in. Bottom Choke Size 5/8 in.

Main Hole Size 7 7/8 in. Tool Joint Size 4 1/2 - XH in.

Blow: 1st Open: Weak, 1 in., blow. No blow back during shut-in.

2nd Open: Good, 7 in., blow. No blow back during shut-in.

Recovered 80 ft. of gas in pipe

Recovered 40 ft. of slightly gas & oil cut mud = .196800 bbls. (Grind out: 5%-oil; 5%-gas; 90%-mud)

Recovered 60 ft. of slightly mud cut gassy oil = .295200 bbls. (Grind out: 10%-mud; 25%-gas; 65%-oil)

Recovered 100 ft. of TOTAL FLUID = .492000 bbls.

Recovered ft. of

Remarks

Time Set Packer(s) 10:55 ~~AM~~ P.M. Time Started Off Bottom 1:50 ~~AM~~ P.M. Maximum Temperature 116°

Initial Hydrostatic Pressure (A) 2038 P.S.I.

Initial Flow Period Minutes 10 (B) 3 P.S.I. to (C) 9 P.S.I.

Initial Closed In Period Minutes 30 (D) 807 P.S.I.

Final Flow Period Minutes 45 (E) 13 P.S.I. to (F) 34 P.S.I.

Final Closed In Period Minutes 90 (G) 845 P.S.I.

Final Hydrostatic Pressure (H) 2022 P.S.I.

GENERAL INFORMATION

Client Information:

Company: MULL DRILLING CO INC
Contact: ERNIE MORRISON
Phone: Fax: e-mail:

Site Information:

Contact: PHIL ASKEY
Phone: Fax: e-mail:

Well Information:

Name: SCHNEIDER #1-12
Operator: MULL DRILLING CO INC
Location-Downhole: DST#5 4268 TO 4335
Location-Surface: S12/17S/28W LANE COUNTY

Test Information:

Company: DIAMOND TESTING
Representative: JOHN RIEDL
Supervisor: PHIL ASKEY
Test Type: CONVENTIONAL Job Number: D538
Test Unit: 2
Start Date: 2007/10/13 Start Time: 20:50:00
End Date: 2007/10/14 End Time: 04:05:00
Report Date: 2007/10/14 Prepared By: JOHN RIEDL

Remarks:

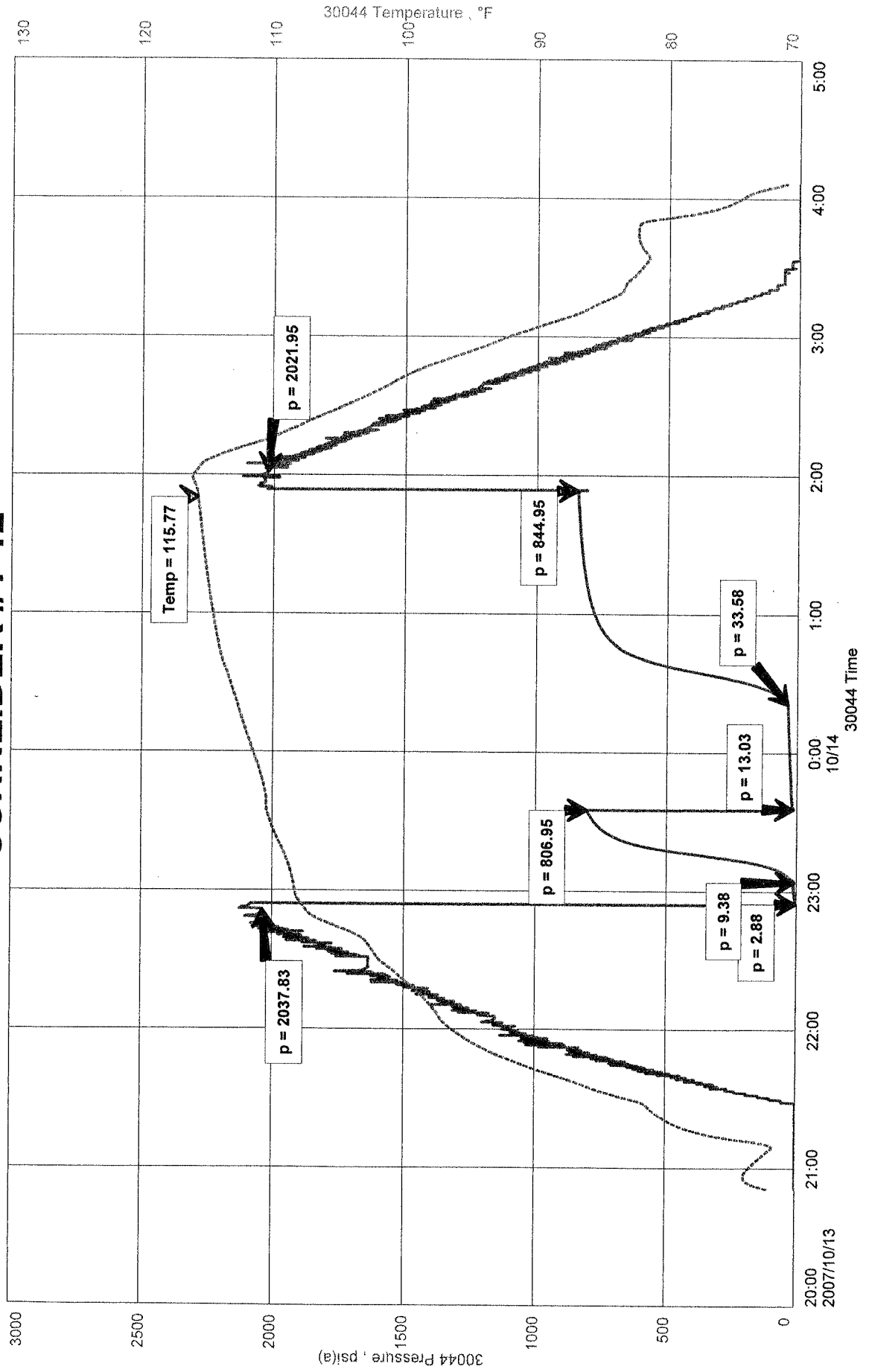
RECOVERY: 80' GIP
40' SLO+GCM
80' SLMCGO
TOTAL FLUID REC. 100' IN DRILL COLLARS

Qualified By: PHIL ASKEY

SCHNEIDER #1-12
Formation: LKC (K,L)
Job Number: D538

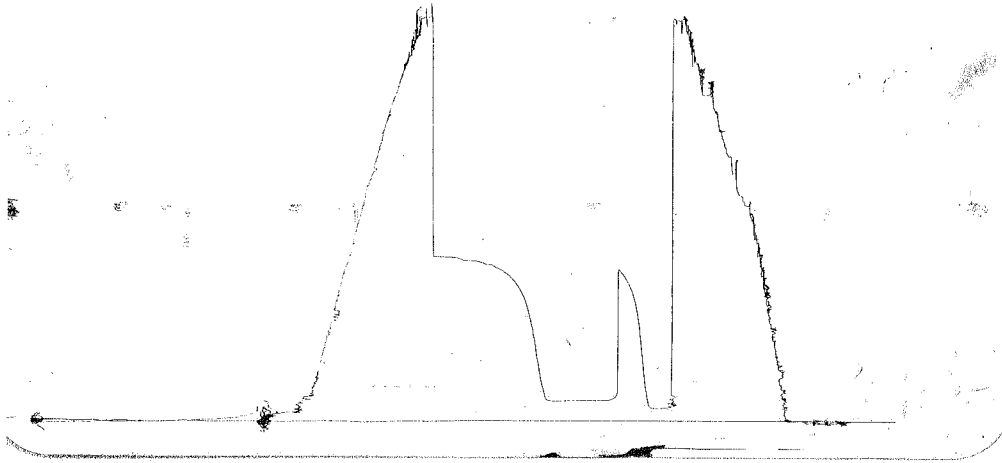
MULL DRILLING CO INC
DST#5 4268 TO 4335
Start Test Date: 2007/10/13
Final Test Date: 2007/10/14

SCHNEIDER #1-12



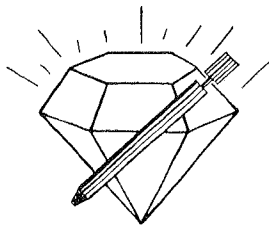
800-572-1112
MILL DRUG

NOV 10 1973
OUTSIDE



This is an actual photograph of recorder chart.

POINT	PRESSURE		Elec. Office Reading	PSI
	Field Reading			
(A) Initial Hydrostatic Mud	2038	2038		PSI
(B) First Initial Flow Pressure.....	3	3		PSI
(C) First Final Flow Pressure	9	9		PSI
(D) Initial Closed-in Pressure	807	807		PSI
(E) Second Initial Flow Pressure	13	13		PSI
(F) Second Final Flow Pressure.....	34	34		PSI
(G) Final Closed-in Pressure.....	845	845		PSI
(H) Final Hydrostatic Mud	2022	2022		PSI



DIAMOND TESTING

P.O. Box 157
HOISINGTON, KANSAS 67544
(620) 653-7550 • (800) 542-7313
STC 30044.D 539

Company Mull Drilling Co., Inc. Lease & Well No. Schneider No. 1-12

Elevation 2753KB Formation Marmaton Effective Pay Ft. Ticket No. J2142

Date 10-14-07 Sec. 12 Twp. 17S Range 28W County Lane State Kansas

Test Approved By Phil Askey Diamond Representative John C. Riedl

Formation Test No. 6 Interval Tested from 4,336 ft. to 4,450 ft. Total Depth 4,450 ft.

Packer Depth 4,331 ft. Size 6 3/4 in. Packer Depth ft. Size in.

Packer Depth 4,336 ft. Size 6 3/4 in. Packer Depth ft. Size in.

Depth of Selective Zone Set ft.

Top Recorder Depth (Inside) 4,339 ft. Recorder Number 30044 Cap. 5,000 psi

Bottom Recorder Depth (Outside) 4,447 ft. Recorder Number 11073 Cap. 4,000 psi

Below Straddle Recorder Depth ft. Recorder Number Cap. psi

Drilling Contractor WW Drilling, LLC - Rig 2 Drill Collar Length 120 ft. I.D. 2 1/4 in.

Mud Type Chemical Viscosity 45 Weight Pipe Length ft. I.D. in.

Weight 9.1 Water Loss 8.8 cc. Drill Pipe Length 4,192 ft. I.D. 3 1/2 in.

Chlorides 2,800 P.P.M. Test Tool Length 24 ft. Tool Size 3 1/2 - IF in.

Jars: Make Bowen Serial Number Not Run Anchor Length 114 ft. Size 4 1/2 - FH in.

Did Well Flow? No Reversed Out No Surface Choke Size 1 in. Bottom Choke Size 5/8 in.

Main Hole Size 7 7/8 in. Tool Joint Size 4 1/2 - XH in.

Blow: 1st Open: Weak, 3/4 in., blow. No blow back during shut-in.

2nd Open: Weak, 1/2 in., blow. No blow back during shut-in.

Recovered 90 ft. of slightly oil cut mud = .442800 bbls. (Grind out: 4%-oil; 96%-mud)

Recovered ft. of

Recovered ft. of

Recovered ft. of

Recovered ft. of

Remarks

Time Set Packer(s) 7:10 ~~XXX~~ P.M. Time Started Off Bottom 9:20 ~~XXX~~ P.M. Maximum Temperature 116°

Initial Hydrostatic Pressure (A) 2105 P.S.I.

Initial Flow Period Minutes 10 (B) 13 P.S.I. to (C) 27 P.S.I.

Initial Closed In Period Minutes 30 (D) 983 P.S.I.

Final Flow Period Minutes 30 (E) 30 P.S.I. to (F) 50 P.S.I.

Final Closed In Period Minutes 60 (G) 924 P.S.I.

Final Hydrostatic Pressure (H) 2057 P.S.I.

GENERAL INFORMATION

Client Information:

Company: MULL DRILLING CO INC

Contact: ERNIE MORRISON

Phone: Fax: e-mail:

Site Information:

Contact: PHIL ASKEY

Phone: Fax: e-mail:

Well Information:

Name: SCHNEIDER #1-12

Operator: MULL DRILLIUNG CO INC

Location-Downhole: DST#6 4336 TO 4450

Location-Surface: S12/17S/28W LANE COUNTY

Test Information:

Company: DIAMOND TESTING

Representative: JOHN RIEDL

Supervisor: PHIL ASKEY

Test Type: CONVENTIONAL

Job Number: D539

Test Unit: 2

Start Date: 2007/10/14

Start Time: 17:00:00

End Date: 2007/10/14

End Time: 23:40:00

Report Date: 2007/10/14

Prepared By: JOHN RIEDL

Remarks:

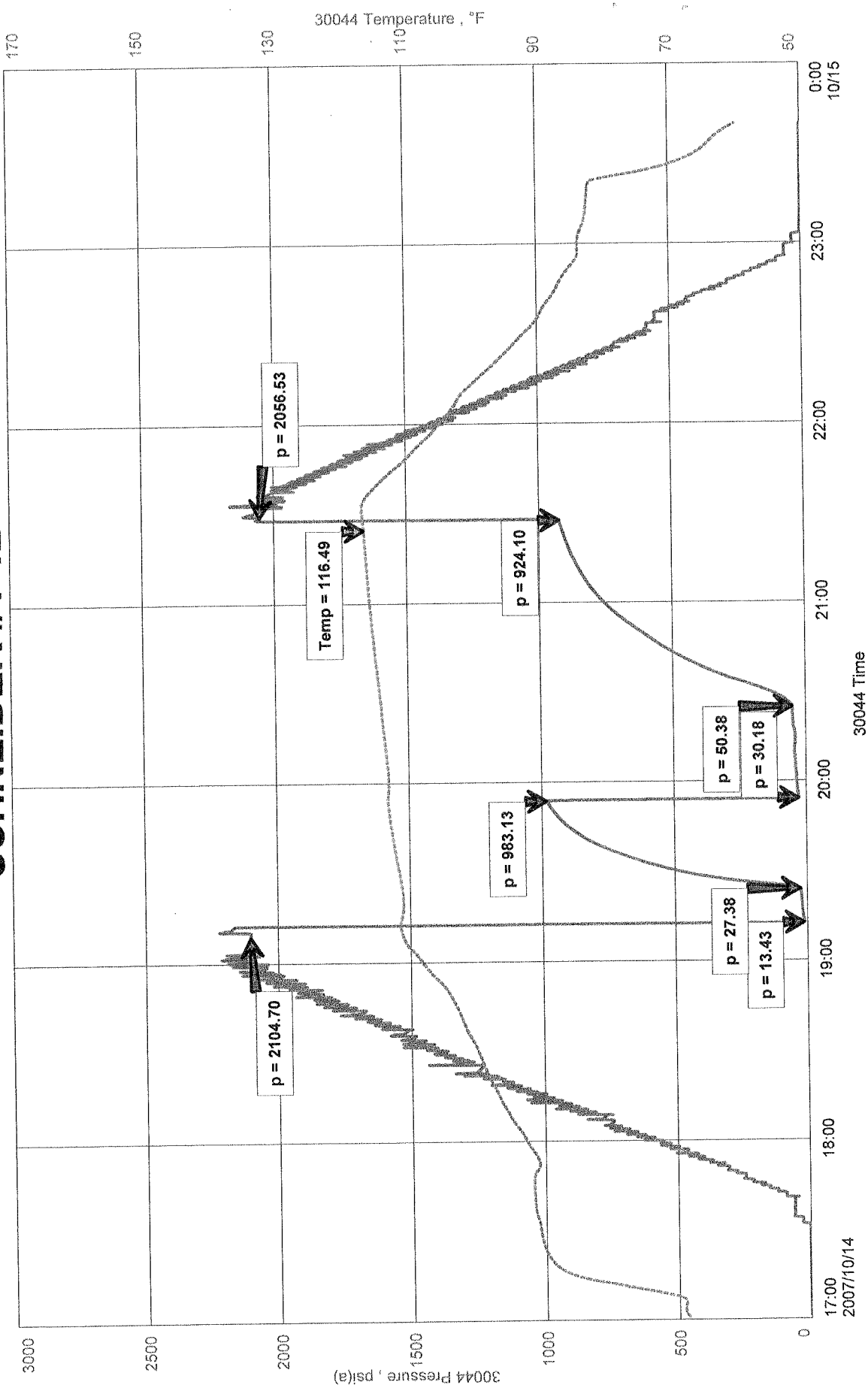
Qualified By: PHIL ASKEY

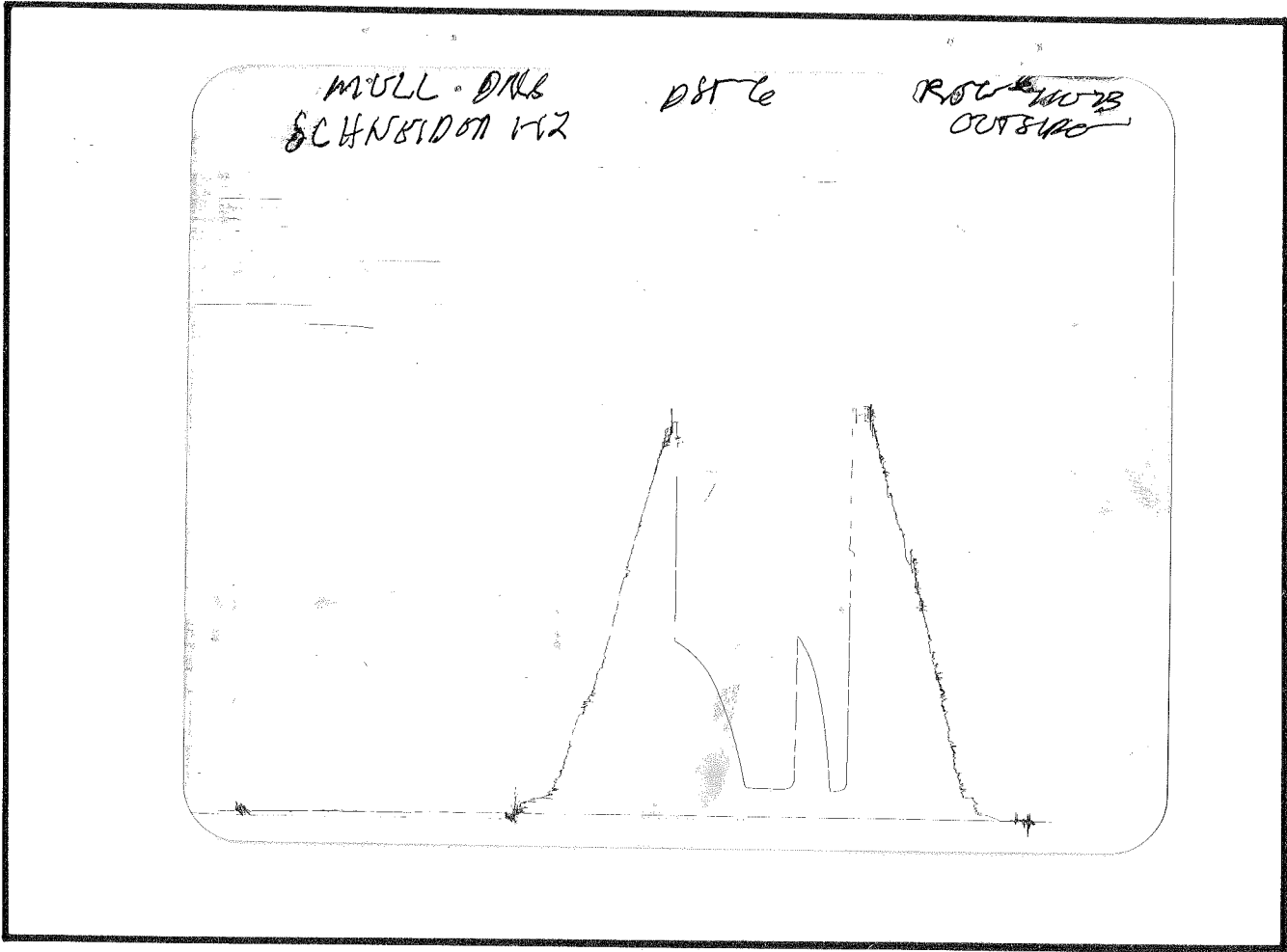
RECOVERY: 90' SLOCM (4%OIL 96%MUD)

SCHNEIDER #1-12
Formation: MARMATON
Job Number: D539

MULL DRILLING CO INC
DST#6 4336 TO 4450
Start Test Date: 2007/10/14
Final Test Date: 2007/10/14

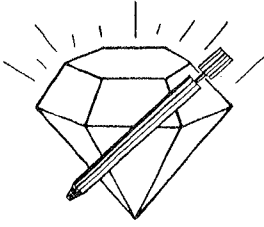
SCHNEIDER #1-12





This is an actual photograph of recorder chart.

POINT	PRESSURE		PSI
	Field Reading	Elec. Office Reading	
(A) Initial Hydrostatic Mud	2105	2105	PSI
(B) First Initial Flow Pressure	13	13	PSI
(C) First Final Flow Pressure	27	27	PSI
(D) Initial Closed-in Pressure	983	983	PSI
(E) Second Initial Flow Pressure	30	30	PSI
(F) Second Final Flow Pressure	50	50	PSI
(G) Final Closed-in Pressure	924	924	PSI
(H) Final Hydrostatic Mud	2957	2957	PSI



DIAMOND TESTING
P.O. Box 157
HOISINGTON, KANSAS 67544
(620) 653-7550 • (800) 542-7313
STC 30044.D 540

Company Mull Drilling Co., Inc. Lease & Well No. Schneider No. 1-12
Elevation 2753KB Formation Fort Scott Effective Pay -- Ft. Ticket No. J2143
Date 10-15-07 Sec. 12 Twp. 17S Range 28W County Lane State Kansas
Test Approved By Phil Askey Diamond Representative John C. Riedl

Formation Test No. 7 Interval Tested from 4,460 ft. to 4,530 ft. Total Depth 4,530 ft.
Packer Depth 4,455 ft. Size 6 3/4 in. Packer Depth -- ft. Size -- in.
Packer Depth 4,460 ft. Size 6 3/4 in. Packer Depth -- ft. Size -- in.
Depth of Selective Zone Set ft.

Top Recorder Depth (Inside) 4,463 ft. Recorder Number 30044 Cap. 5,000 psi
Bottom Recorder Depth (Outside) 4,527 ft. Recorder Number 11073 Cap. 4,000 psi
Below Straddle Recorder Depth ft. Recorder Number Cap. psi

Drilling Contractor WW Drilling, LLC - Rig 2 Drill Collar Length 120 ft. I.D. 2 1/4 in.
Mud Type Chemical Viscosity 46 Weight Pipe Length -- ft. I.D. -- in.
Weight 9.5 Water Loss 9.6 cc. Drill Pipe Length 4,316 ft. I.D. 3 1/2 in.
Chlorides 3,600 P.P.M. Test Tool Length 24 ft. Tool Size 3 1/2 - IF in.
Jars: Make Bowen Serial Number Not Run Anchor Length 70 ft. Size 4 1/2 - FH in.
Did Well Flow? No Reversed Out No Surface Choke Size 1 in. Bottom Choke Size 5/8 in.
Main Hole Size 7 7/8 in. Tool Joint Size 4 1/2 - XH in.

Blow: 1st Open: Weak, 3/8 in., blow. No blow back during shut-in.
2nd Open: No blow. No blow back during shut-in.

Recovered 10 ft. of oil specked mud = .049200 bbls.
Recovered ft. of
Recovered ft. of
Recovered ft. of
Recovered ft. of

Remarks

Time Set Packer(s) 11:40 A.M. Time Started Off Bottom 1:50 XXX P.M. Maximum Temperature 117°
Initial Hydrostatic Pressure (A) 2185 P.S.I.
Initial Flow Period Minutes 10 (B) 9 P.S.I. to (C) 9 P.S.I.
Initial Closed In Period Minutes 30 (D) 126 P.S.I.
Final Flow Period Minutes 30 (E) 9 P.S.I. to (F) 12 P.S.I.
Final Closed In Period Minutes 60 (G) 92 P.S.I.
Final Hydrostatic Pressure (H) 2124 P.S.I.

GENERAL INFORMATION

Client Information:

Company: MULL DRILLING CO INC
Contact: ERNIE MORRISON
Phone: Fax: e-mail:

Site Information:

Contact: PHIL ASKEY
Phone: Fax: e-mail:

Well Information:

Name: SCHNEIDER #1-12
Operator: MULL DRILLING CO INC
Location-Downhole: DST #7 4460 TO 4530
Location-Surface: S12/17S/28W LANE COUNTY

Test Information:

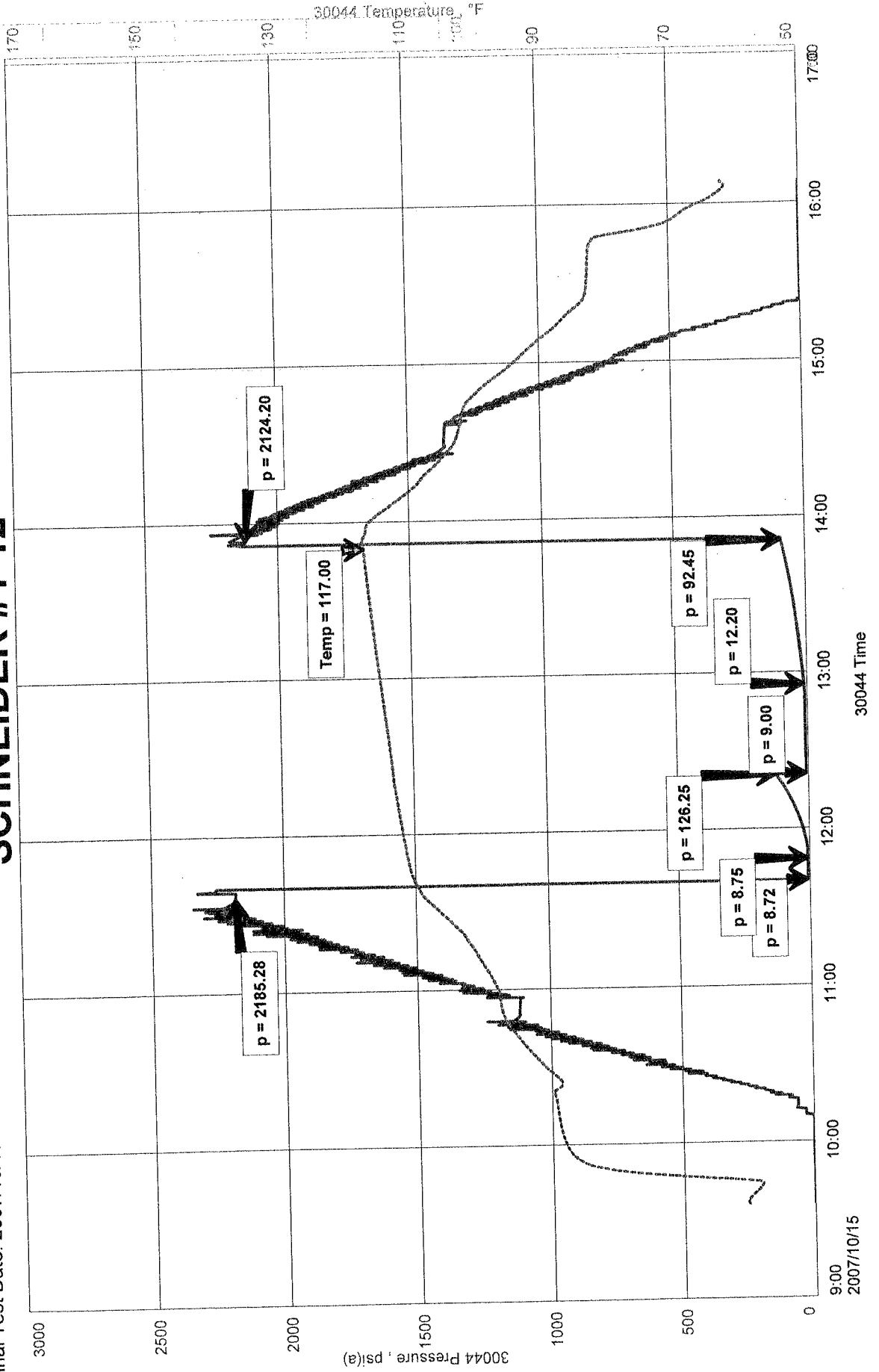
Company: DIAMOND TESTING
Representative: JOHN RIEDL
Supervisor: PHIL ASKEY
Test Type: CONVENTIONAL Job Number: D540
Test Unit: 2
Start Date: 2007/10/15 Start Time: 09:35:00
End Date: 2007/10/15 End Time: 16:05:00
Report Date: 2007/10/15 Prepared By: JOHN RIEDL
Remarks: Qualified By: PHIL ASKEY

RECOVERY: 10' OIL SPECKED MUD

SCHNEIDER#1-12
Formation: FORTSCOTT
Job Number: D540

MULL DRILLING CO INC
DST #7 4460 TO 4530
Start Test Date: 2007/10/15
Final Test Date: 2007/10/15

SCHNEIDER #1-12

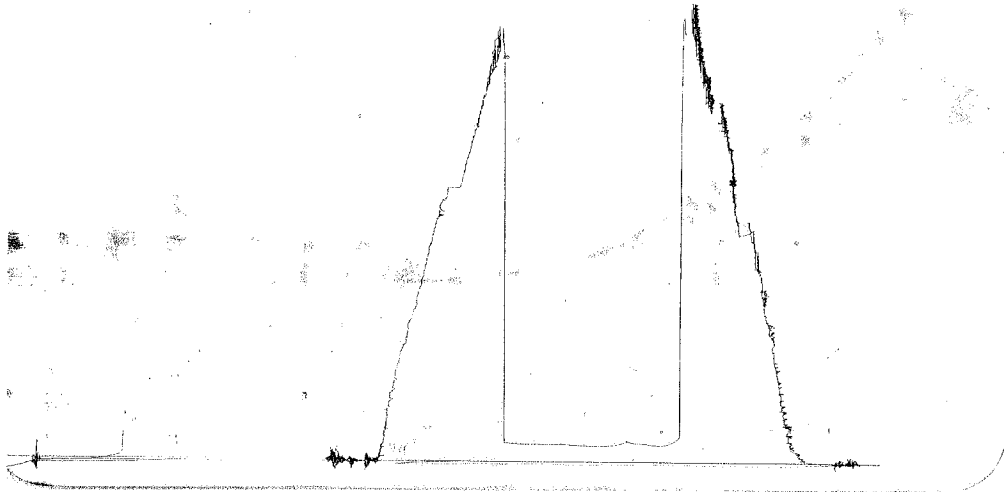


MULL PALG
SCHNOCKEN 2172

OST #7

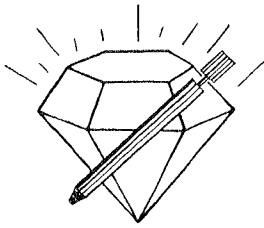
ROC #11023

OUTSIDE



This is an actual photograph of recorder chart.

POINT	PRESSURE		E1ec. Office Reading	PSI
	Field Reading			
(A) Initial Hydrostatic Mud	2185	2185		PSI
(B) First Initial Flow Pressure	9	9		PSI
(C) First Final Flow Pressure	9	9		PSI
(D) Initial Closed-in Pressure	126	126		PSI
(E) Second Initial Flow Pressure	9	9		PSI
(F) Second Final Flow Pressure	12	12		PSI
(G) Final Closed-in Pressure	92	92		PSI
(H) Final Hydrostatic Mud	2124	2124		PSI



DIAMOND TESTING

P.O. Box 157
HOISINGTON, KANSAS 67544
(620) 653-7550 • (800) 542-7313
STC 30044.D 341

Company Mull Drilling Co., Inc. Lease & Well No. Schneider No. 1-12
Elevation 2753KB Formation Cherokee Sand Effective Pay -- Ft. Ticket No. J2144
Date 10-16-07 Sec. 12 Twp. 17S Range 28W County Lane State Kansas
Test Approved By Phil Askey Diamond Representative John C. Riedl

Formation Test No. 8 Interval Tested from 4,550 ft. to 4,600 ft. Total Depth 4,600 ft.
Packer Depth 4,545 ft. Size 6 3/4 in. Packer Depth -- ft. Size -- in.
Packer Depth 4,550 ft. Size 6 3/4 in. Packer Depth -- ft. Size -- in.
Depth of Selective Zone Set -- ft.

Top Recorder Depth (Inside) 4,553 ft. Recorder Number 30044 Cap. 5,000 psi
Bottom Recorder Depth (Outside) 4,597 ft. Recorder Number 11073 Cap. 4,000 psi
Below Straddle Recorder Depth -- ft. Recorder Number -- Cap. -- psi

Drilling Contractor WW Drilling, LLC - Rig 2 Drill Collar Length 120 ft. I.D. 2 1/4 in.
Mud Type Chemical Viscosity 48 Weight Pipe Length -- ft. I.D. -- in.
Weight 9.3 Water Loss 9.0 cc. Drill Pipe Length 4,406 ft. I.D. 3 1/2 in.
Chlorides 3,810 P.P.M. Test Tool Length 24 ft. Tool Size 3 1/2 - IF in.
Jars: Make Bowen Serial Number Not Run Anchor Length 50 ft. Size 4 1/2 - FH in.
Did Well Flow? No Reversed Out No Surface Choke Size 1 in. Bottom Choke Size 5/8 in.
Main Hole Size 7 7/8 in. Tool Joint Size 4 1/2 - XH in.

Blow: 1st Open: Weak, 1/2 in., blow. No blow back during shut-in.
2nd Open: Weak, 1/2 in., blow. Dead in 15 mins. No blow back during shut-in.

Recovered 10 ft. of drilling mud = .049200 bbls.
Recovered -- ft. of
Recovered -- ft. of
Recovered -- ft. of
Recovered -- ft. of
Remarks

Time Set Packer(s) 5:10 A.M. XXX Time Started Off Bottom 7:20 A.M. XXX Maximum Temperature 117°
Initial Hydrostatic Pressure (A) 2212 P.S.I.
Initial Flow Period Minutes 10 (B) 8 P.S.I. to (C) 6 P.S.I.
Initial Closed In Period Minutes 30 (D) 98 P.S.I.
Final Flow Period Minutes 30 (E) 7 P.S.I. to (F) 8 P.S.I.
Final Closed In Period Minutes 60 (G) 71 P.S.I.
Final Hydrostatic Pressure (H) 2179 P.S.I.

GENERAL INFORMATION

Client Information:

Company: MULL DRILLING CO INC

Contact: MARK SHREVE

Phone: Fax: e-mail:

Site Information:

Contact: PHIL ASKEY

Phone: Fax: e-mail:

Well Information:

Name: SCHNEIDER 1-12

Operator: MULL DRILLING CO INC

Location-Downhole: DST #8 4550 TO 4600

Location-Surface: S12/17S/28W LANE COUN TY

Test Information:

Company: DIAMOND TESTING

Representative: JOHN RIEDL

Supervisor: PHIL ASKEY

Test Type: CONVENTIONAL

Job Number: D341

Test Unit: 2

Start Date: 2007/10/16

Start Time: 03:05:00

End Date: 2007/10/16

End Time: 09:50:00

Report Date: 2007/10/16

Prepared By: JOHN RIEDL

Remarks:

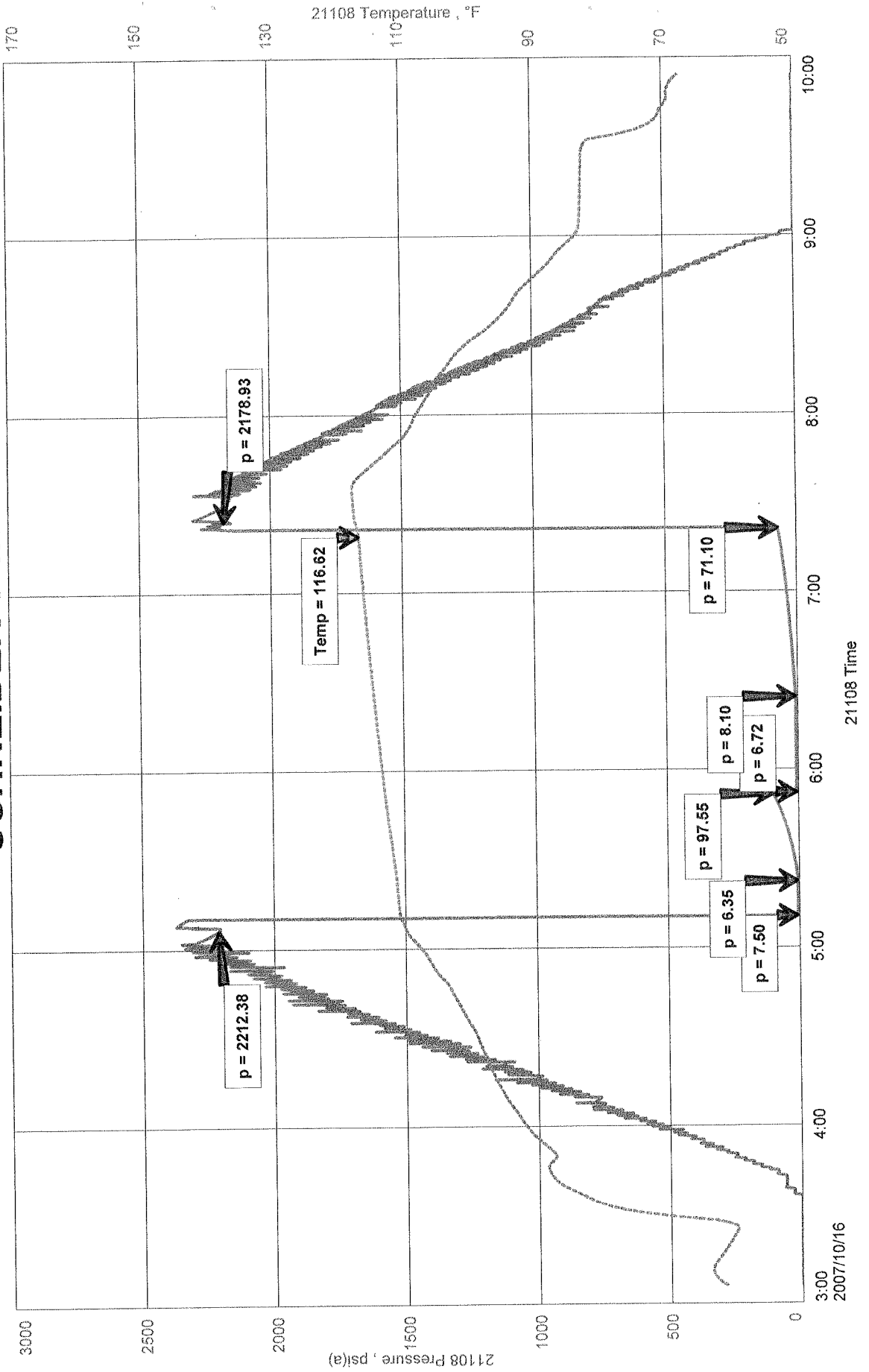
Qualified By: PHIL ASKEY

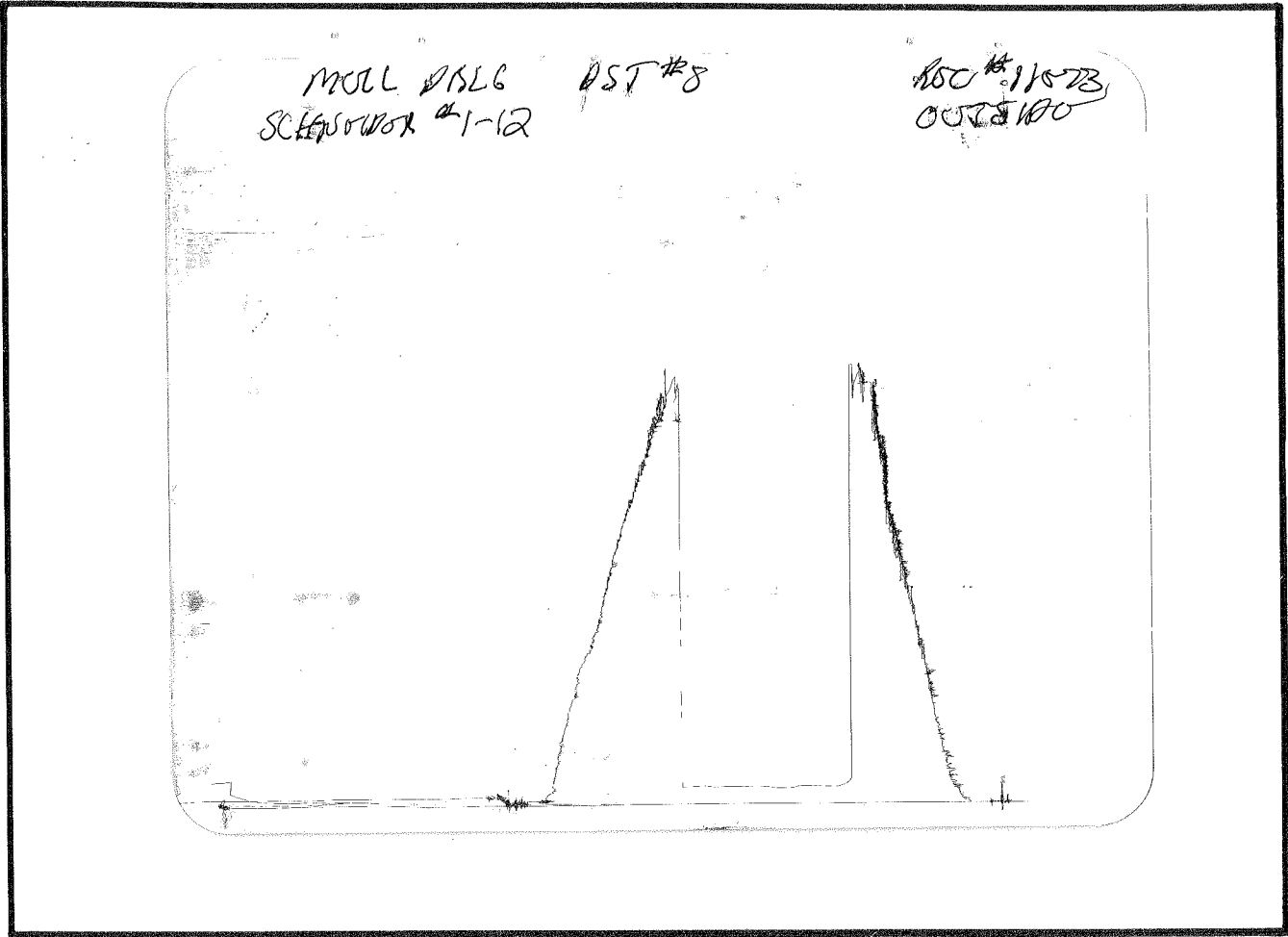
RECOVERY: 10' DRILLING MUD

SCHNEIDER 1-12
Formation: CHEROKEE SAND
Job Number: D341

SCHNEIDER 1-12

MULL DRILLING CO INC
DST #8 4550 TO 4600
Start Test Date: 2007/10/16
Final Test Date: 2007/10/16





This is an actual photograph of recorder chart.

POINT	PRESSURE		Elec. Office Reading	PSI
	Field Reading			
(A) Initial Hydrostatic Mud	2212	2212		PSI
(B) First Initial Flow Pressure.....	8	8		PSI
(C) First Final Flow Pressure	6	6		PSI
(D) Initial Closed-in Pressure	98	98		PSI
(E) Second Initial Flow Pressure	7	7		PSI
(F) Second Final Flow Pressure.....	8	8		PSI
(G) Final Closed-in Pressure.....	71	71		PSI
(H) Final Hydrostatic Mud	2179	2179		PSI