

15-101-22040

7-17s-28w

DIAMOND TESTING

P.O. Box 157

HOISINGTON, KANSAS 67544

(620) 653-7550 • (800) 542-7313

Page 1 of 2 Pages

Company Mull Drilling Co., Inc. Lease & Well No. Dorthea Unit No. 1-7
 Elevation 2790KB Formation Lansing/Kansas City "I" Effective Pay -- Ft. Ticket No. 2367
 Date 9-10-07 Sec. 7 Twp. 17S Range 28W County Lane State Kansas
 Test Approved By Kevin Kessler Diamond Representative Roger D. Friedly

Formation Test No. 1 Interval Tested from 4,155 ft. to 4,195 ft. Total Depth 4,195 ft.
 Packer Depth 4,150 ft. Size 6 3/4 in. Packer Depth -- ft. Size -- in.
 Packer Depth 4,155 ft. Size 6 3/4 in. Packer Depth -- ft. Size -- in.
 Depth of Selective Zone Set ft.

Top Recorder Depth (Inside) 4,144 ft. Recorder Number 30035 Cap. 5,000 psi
 Bottom Recorder Depth (Outside) 4,192 ft. Recorder Number 13387 Cap. 4,000 psi
 Below Straddle Recorder Depth ft. Recorder Number Cap. psi

Drilling Contractor Duke Drilling Co., Inc. - Rig 4 Drill Collar Length -- ft. I.D. -- in.
 Mud Type Chemical Viscosity 48 Weight Pipe Length -- ft. I.D. -- in.
 Weight 9.2 Water Loss 9.6 cc. Drill Pipe Length 4,131 ft. I.D. 3 1/2 in.
 Chlorides 3,200 P.P.M. Test Tool Length 24 ft. Tool Size 3 1/2 - IF in.
 Jars: Make Bowen Serial Number Not Run Anchor Length 40 ft. Size 4 1/2 - FH in.
 Did Well Flow? No Reversed Out No Surface Choke Size 1 in. Bottom Choke Size 5/8 in.
 Main Hole Size 7 7/8 in. Tool Joint Size 4 1/2 - XH in.

Blow: 1st Open: Weak, surface blow throughout. No blow back during shut-in.
2nd Open: No blow. No blow back during shut-in.

Recovered 3 ft. of drilling mud = .042600 bbls.
 Recovered ft. of
 Recovered ft. of
 Recovered ft. of
 Recovered ft. of
 Remarks Tool Sample Grind Out: 100%-drilling mud

Time Set Packer(s)	<u>6:29</u>	AM.	Time Started Off Bottom	<u>8:39</u>	AM.	Maximum Temperature	<u>115°</u>
Initial Hydrostatic Pressure			(A)	<u>2042</u>	P.S.I.		
Initial Flow Period	Minutes	<u>10</u>	(B)	<u>15</u>	P.S.I. to (C)	<u>19</u>	P.S.I.
Initial Closed In Period	Minutes	<u>30</u>	(D)	<u>853</u>	P.S.I.		
Final Flow Period	Minutes	<u>30</u>	(E)	<u>16</u>	P.S.I. to (F)	<u>23</u>	P.S.I.
Final Closed In Period	Minutes	<u>60</u>	(G)	<u>769</u>	P.S.I.		
Final Hydrostatic Pressure			(H)	<u>2032</u>	P.S.I.		

GENERAL INFORMATION

Client Information:

Company: MULL DRILLING CO., INC.
Contact: ERNIE MORRISON
Phone: Fax: e-mail:

Site Information:

Contact: KEVIN KESSLER
Phone: Fax: e-mail:

Well Information:

Name: DORTHEA UNIT #1-7
Operator: MULL DRILLING CO., INC.
Location-Downhole: DST #1 LKC 'I' 4,155' - 4,195'
Location-Surface: SEC 31-16S-28W GOVE COUNTY

Test Information:

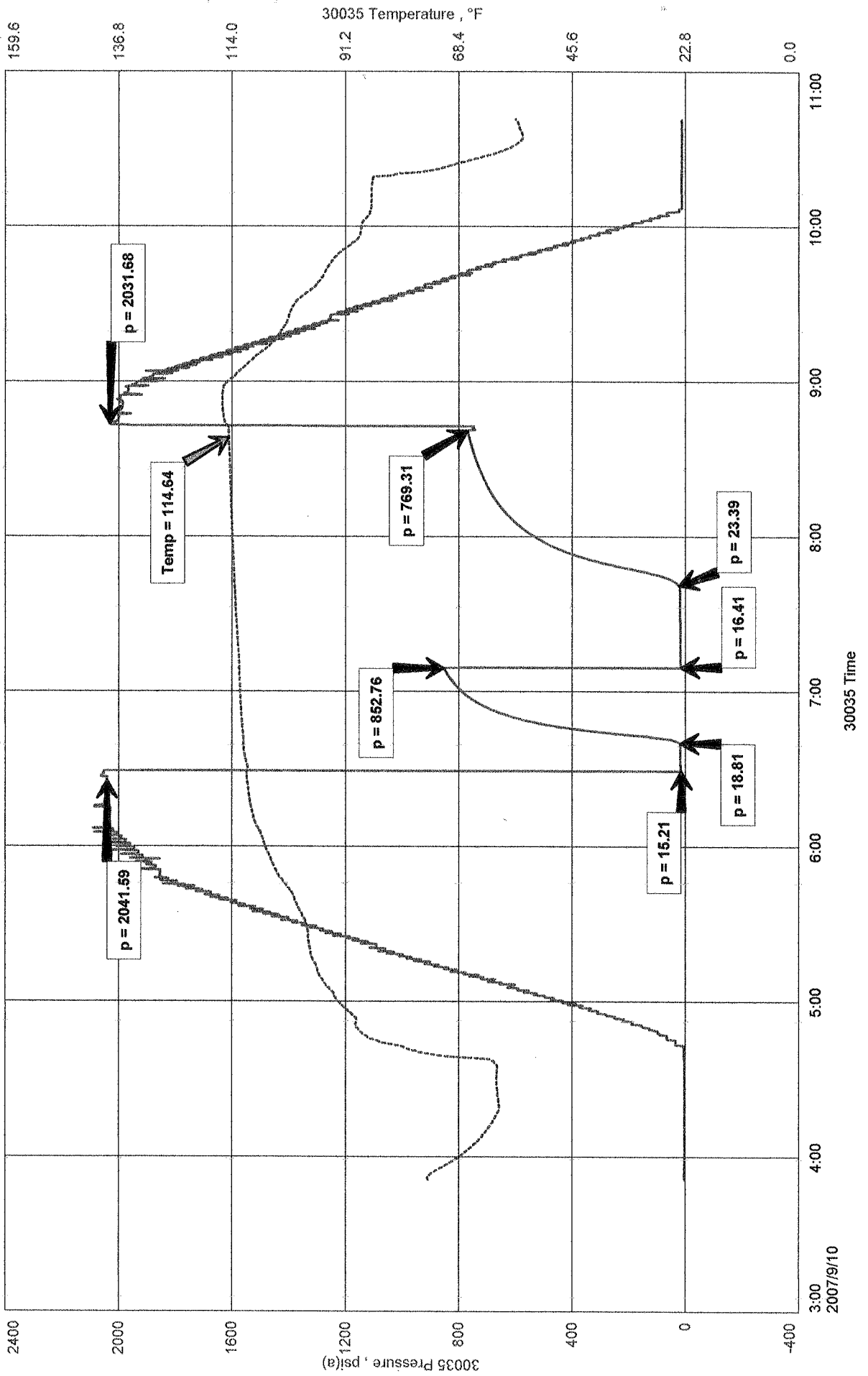
Company: DIAMOND TESTING
Representative: ROGER D. FRIEDLY
Supervisor: KEVIN KESSLER
Test Type: CONVENTIONAL Job Number:
Test Unit: NO. 1
Start Date: 2007/09/10 Start Time: 03:50:00
End Date: 2007/09/10 End Time: 10:42:00
Report Date: Prepared By:
Remarks: Qualified By:

RECOVERED: 3' DRILLING MUD
TOOL SAMPLE: 100% DM

MULL DRILLING CO., INC.
 DST #1 LKC 'I' 4,155' - 4,195'
 Start Test Date: 2007/09/10
 Final Test Date: 2007/09/10

DORTHEA UNIT #1-7
 Formation: DST #1 LKC 'I' 4,155' - 4,195'
 Pool: WILDCAT

DORTHEA UNIT #1-7

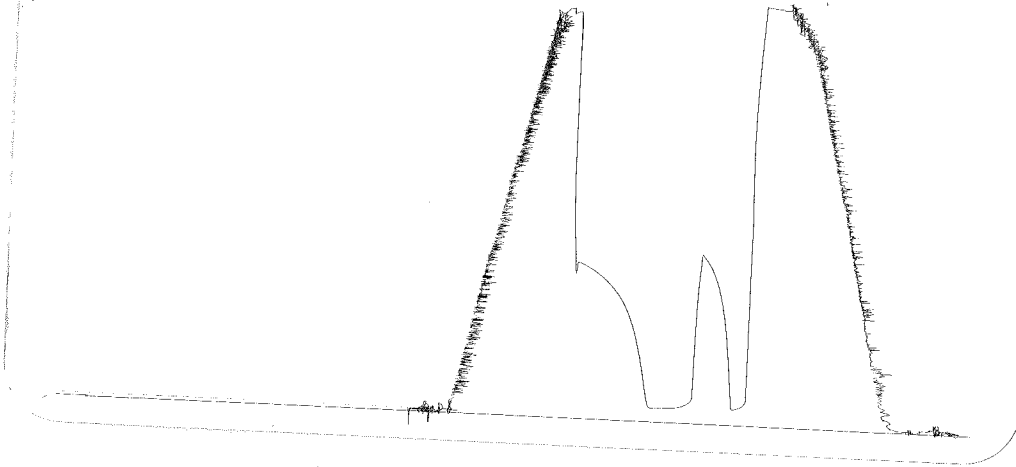


DST #1 outside 13787

WLC D

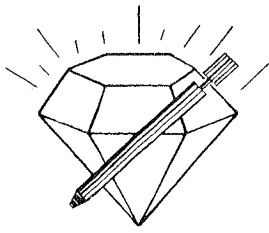
4155 - 4195

WLC 4192



This is an actual photograph of recorder chart.

POINT	PRESSURE		Elec. Office Reading	PSI
	Field Reading	Office Reading		
(A) Initial Hydrostatic Mud	2042	2042		PSI
(B) First Initial Flow Pressure	15	15		PSI
(C) First Final Flow Pressure	19	19		PSI
(D) Initial Closed-in Pressure	853	853		PSI
(E) Second Initial Flow Pressure	16	16		PSI
(F) Second Final Flow Pressure	23	23		PSI
(G) Final Closed-in Pressure	769	769		PSI
(H) Final Hydrostatic Mud	2032	2032		PSI



DIAMOND TESTING

P.O. Box 157

HOISINGTON, KANSAS 67544

(620) 653-7550 • (800) 542-7313

Company Mull Drilling Co., Inc. Lease & Well No. Dorthea Unit No. 1-7
 Elevation 2790KB Formation Lansing/Kansas City 'K' Effective Pay -- Ft. Ticket No. 2368
 Date 9-11-07 Sec. 7 Twp. 17S Range 28W County Lane State Kansas

Test Approved By Kevin Kessler Diamond Representative Roger D. Friedly

Formation Test No. 2 Interval Tested from 4,220 ft. to 4,260 ft. Total Depth 4,260 ft.

Packer Depth 4,215 ft. Size 6 3/4 in. Packer Depth -- ft. Size -- in.

Packer Depth 4,220 ft. Size 6 3/4 in. Packer Depth -- ft. Size -- in.

Depth of Selective Zone Set ft.

Top Recorder Depth (Inside) 4,209 ft. Recorder Number 30035 Cap. 5,000 psi

Bottom Recorder Depth (Outside) 4,257 ft. Recorder Number 13387 Cap. 4,000 psi

Below Straddle Recorder Depth ft. Recorder Number Cap. psi

Drilling Contractor Duke Drilling Co., Inc. - Rig 4 Drill Collar Length -- ft. I.D. -- in.

Mud Type Chemical Viscosity 48 Weight Pipe Length -- ft. I.D. -- in.

Weight 9.2 Water Loss 9.6 cc. Drill Pipe Length 4,196 ft. I.D. 3 1/2 in.

Chlorides 3,200 P.P.M. Test Tool Length 24 ft. Tool Size 3 1/2 - IF in.

Jars: Make Bowen Serial Number Not Run Anchor Length 40 ft. Size 4 1/2 - FH in.

Did Well Flow? No Reversed Out No Surface Choke Size 1 in. Bottom Choke Size 5/8 in.

Main Hole Size 7 7/8 in. Tool Joint Size 4 1/2 - XH in.

Blow: 1st Open: Weak, 1/8 in., blow increasing to 1 1/2 ins. No blow back during shut-in.
2nd Open: Weak, 1/2 in., blow increasing to 7 ins. No blow back during shut-in.

Recovered 75 ft. of gas in pipe

Recovered 35 ft. of gas & oil cut mud = .497000 bbls. (Grind out: 1%-gas; 18%-oil; 81%-mud)

Recovered 35 ft. of TOTAL FLUID = .497000 bbls.

Recovered ft. of

Recovered ft. of

Remarks Tool Sample Grind Out: 2%-gas; 22%oil; 76%-mud

Time Set Packer(s) 12:24 ~~XXX~~ A.M. Time Started Off Bottom 4:04 ~~XXX~~ A.M. Maximum Temperature 116°

Initial Hydrostatic Pressure 2074 (A) P.S.I.

Initial Flow Period 10 Minutes (B) 13 P.S.I. to (C) 17 P.S.I.

Initial Closed In Period 30 Minutes (D) 376 P.S.I.

Final Flow Period 60 Minutes (E) 18 P.S.I. to (F) 29 P.S.I.

Final Closed In Period 120 Minutes (G) 426 P.S.I.

Final Hydrostatic Pressure 2052 (H) P.S.I.

GENERAL INFORMATION

Client Information:

Company: MULL DRILLING CO., INC.

Contact: ERNIE MORRISON

Phone: Fax: e-mail:

Site Information:

Contact: KEVIN KESSLER

Phone: Fax: e-mail:

Well Information:

Name: DORTHEA UNIT #1-7

Operator: MULL DRILLING CO., INC.

Location-Downhole: DST #2 LKC 'K' 4,220' - 4,260'

Location-Surface: SEC 7-17S-28W LANE COUNTY

Test Information:

Company: DIAMOND TESTING

Representative: ROGER D. FRIEDLY

Supervisor: KEVIN KESSLER

Test Type: CONVENTIONAL

Job Number:

Test Unit: NO. 1

Start Date: 2007/09/10

Start Time: 22:16:00

End Date: 2007/09/11

End Time: 06:09:00

Report Date:

Prepared By:

Remarks:

Qualified By:

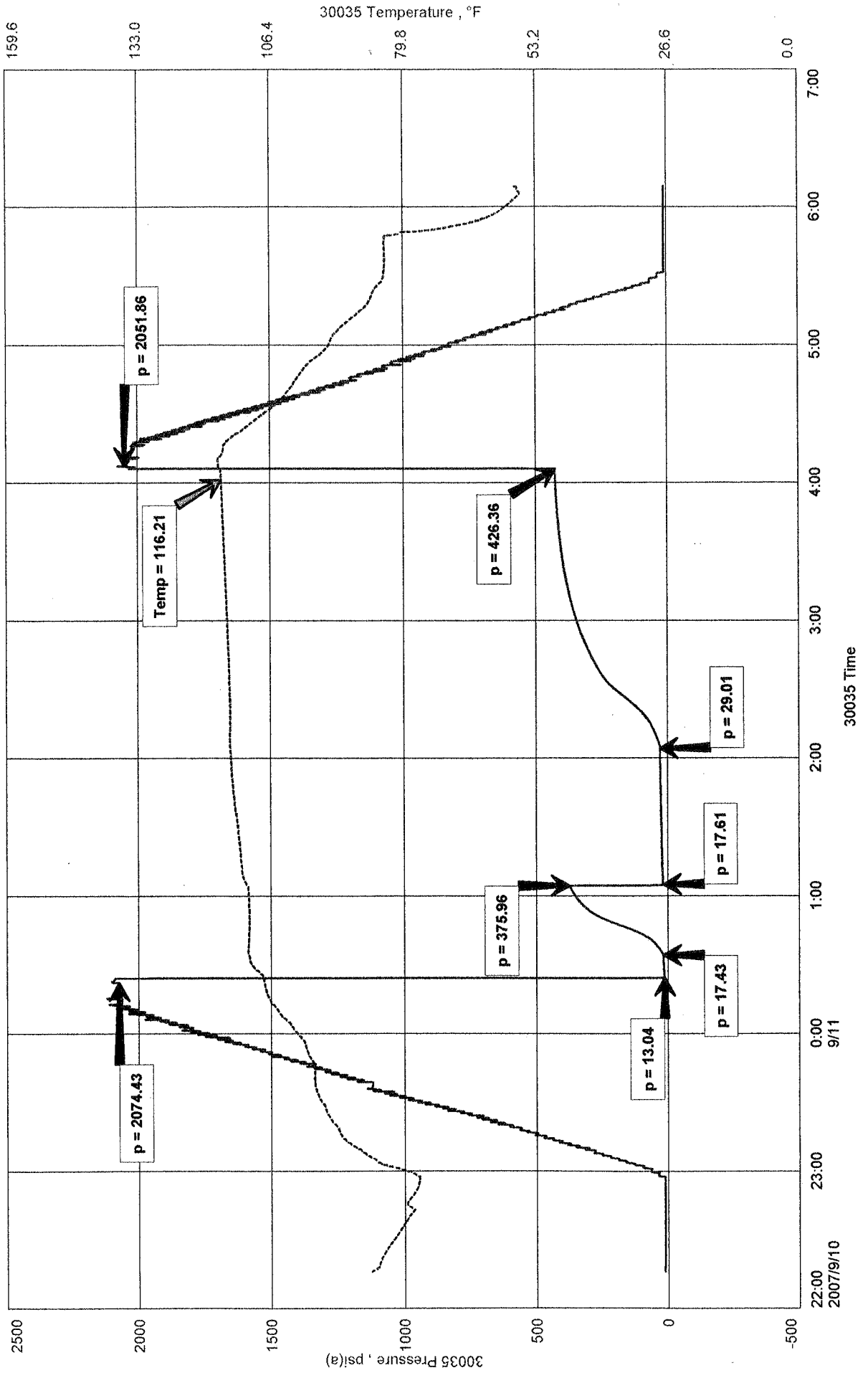
RECOVERED: 75' GAS IN PIPE
35' OCM 1% GAS, 18% OIL, 81% MUD

TOOL SAMPLE: 2% GAS, 22% OIL, 76% MUD

MULL DRILLING CO., INC.
DST #2 LKC 'K' 4,220' - 4,260'
Start Test Date: 2007/09/10
Final Test Date: 2007/09/11

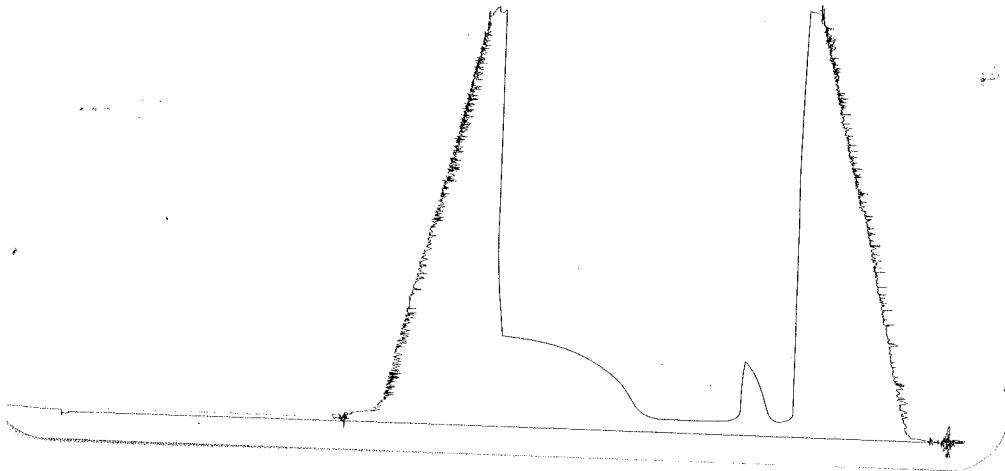
DORTHEA UNIT #1-7
Formation: DST #2 LKC 'K' 4,220' - 4,260'
Pool: WILDCAT

DORTHEA UNIT #1-7



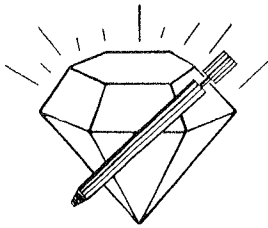
DST # 2 out side 13397
LKC K

4220-4260
LDC 4257



This is an actual photograph of recorder chart.

POINT	PRESSURE		Elec. Office Reading	
	Field Reading			
(A) Initial Hydrostatic Mud	2074	2074	2074	PSI
(B) First Initial Flow Pressure.....	13	13	13	PSI
(C) First Final Flow Pressure	17	17	17	PSI
(D) Initial Closed-in Pressure	376	376	376	PSI
(E) Second Initial Flow Pressure	18	18	18	PSI
(F) Second Final Flow Pressure.....	29	29	29	PSI
(G) Final Closed-in Pressure.....	426	426	426	PSI
(H) Final Hydrostatic Mud	2052	2052	2052	PSI



DIAMOND TESTING

P.O. Box 157
HOISINGTON, KANSAS 67544
(620) 653-7550 • (800) 542-7313

Company Mull Drilling Co., Inc. Lease & Well No. Dorthea Unit No. 1-7
Elevation 2790KB Formation Lansing/Kansas City "L"/Pleasanton Effective Pay -- Ft. Ticket No. 2369
Date 9-11-07 Sec. 7 Twp. 17S Range 28W County Lane State Kansas
Test Approved By Kevin Kessler Diamond Representative Roger D. Friedly

Formation Test No. 3 Interval Tested from 4,250 ft. to 4,350 ft. Total Depth 4,350 ft.
Packer Depth 4,245 ft. Size 63/4 in. Packer Depth -- ft. Size -- in.
Packer Depth 4,250 ft. Size 63/4 in. Packer Depth -- ft. Size -- in.
Depth of Selective Zone Set ft.

Top Recorder Depth (Inside) 4,239 ft. Recorder Number 30035 Cap. 5,000 psi
Bottom Recorder Depth (Outside) 4,347 ft. Recorder Number 13387 Cap. 4,000 psi
Below Straddle Recorder Depth ft. Recorder Number Cap. psi

Drilling Contractor Duke Drilling Co., Inc. - Rig 4 Drill Collar Length -- ft. I.D. -- in.
Mud Type Chemical Viscosity 51 Weight Pipe Length -- ft. I.D. -- in.
Weight 9.2 Water Loss 8.8 cc. Drill Pipe Length 4,226 ft. I.D. 3 1/2 in.
Chlorides 3,300 P.P.M. Test Tool Length 24 ft. Tool Size 3 1/2 - IF in.
Jars: Make Bowen Serial Number Not Run Anchor Length 37' perf. w/ 63' drill pipe Size 4 1/2 - FH in.
Did Well Flow? No Reversed Out No Surface Choke Size 1 in. Bottom Choke Size 5/8 in.
Main Hole Size 7 7/8 in. Tool Joint Size 4 1/2 - XH in.

Blow: 1st Open: Weak, 1/8 in., blow increasing to 1/2 in. No blow back during shut-in.
2nd Open: No blow. No blow back during shut-in.

Recovered 5 ft. of oil specked drilling mud = .071000 bbls.
Recovered ft. of
Recovered ft. of
Recovered ft. of
Recovered ft. of

Remarks Tool Sample Grind Out: 100%-drilling mud with a few oil spots breaking out

Time Set Packer(s) 9:55 ~~AM.~~ P.M. Time Started Off Bottom 12:05 ~~AM.~~ P.M. Maximum Temperature 113°
Initial Hydrostatic Pressure (A) 2094 P.S.I.
Initial Flow Period Minutes 10 (B) 14 P.S.I. to (C) 15 P.S.I.
Initial Closed In Period Minutes 30 (D) 476 P.S.I.
Final Flow Period Minutes 30 (E) 15 P.S.I. to (F) 16 P.S.I.
Final Closed In Period Minutes 60 (G) 480 P.S.I.
Final Hydrostatic Pressure (H) 2082 P.S.I.

GENERAL INFORMATION

Client Information:

Company: MULL DRILLING CO., INC.
Contact: ERNIE MORRISON
Phone: Fax: e-mail:

Site Information:

Contact: KEVIN KESSLER
Phone: Fax: e-mail:

Well Information:

Name: DORTHEA UNIT #1-7
Operator: MULL DRILLING CO., INC.
Location-Downhole: DST #3 LKC 'L' / PLEAS. 4,250' - 4,350'
Location-Surface: SEC 7-17S-28W LANE COUNTY

Test Information:

Company: DIAMOND TESTING
Representative: ROGER D. FRIEDLY
Supervisor: KEVIN KESSLER
Test Type: CONVENTIONAL Job Number:
Test Unit: NO. 1
Start Date: 2007/09/11 Start Time: 20:00:00
End Date: 2007/09/12 End Time: 02:05:00
Report Date: Prepared By:
Remarks: Qualified By:

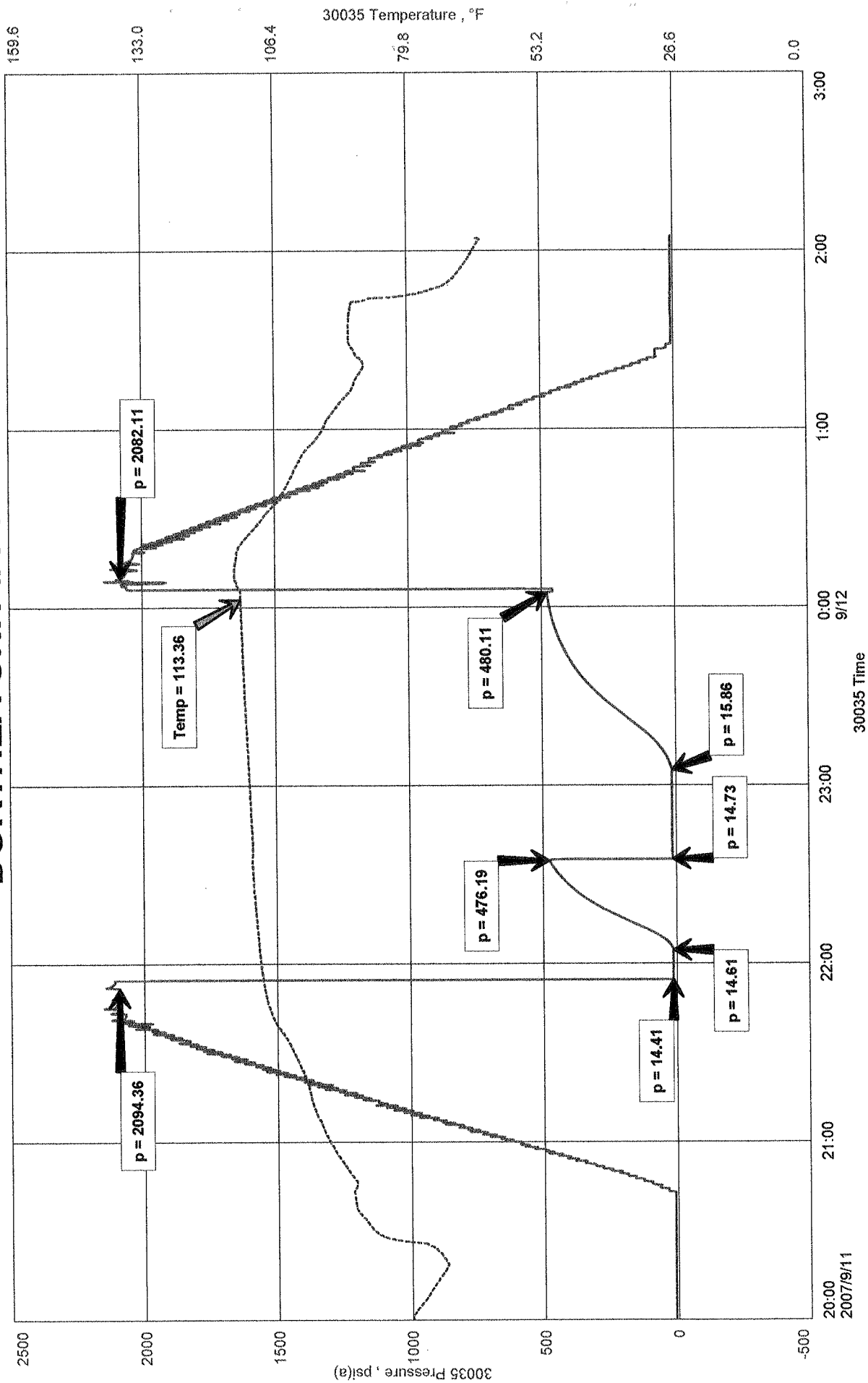
RECOVERED: 5' OIL SPECKED DRILLING MUD

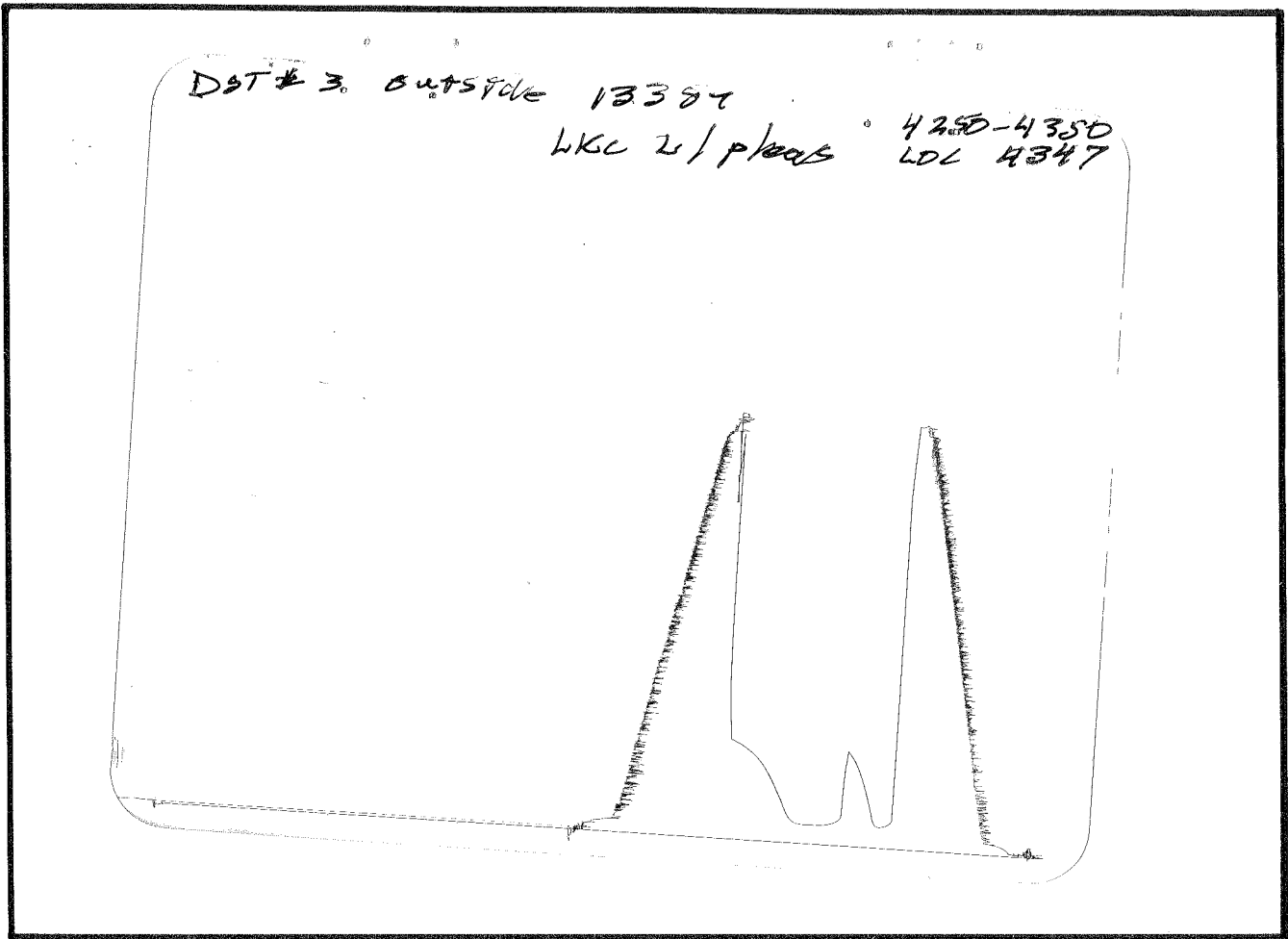
TOOL SAMPLE: 100% DM WITH FEW OIL SPOTS BREAKING OUT.

MULL DRILLING CO., INC.
 DST #3 LKC 'L' / PLEAS. 4,250' - 4,350'
 Start Test Date: 2007/09/11
 Final Test Date: 2007/09/12

DORTHEA UNIT #1-7
 Formation: DST #3 LKC 'L' / PLEAS 4,250' - 4,350'
 Pool: WILDCAT

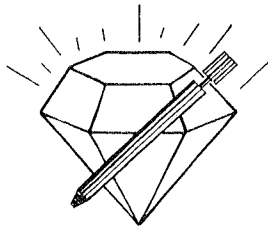
DORTHEA UNIT #1-7





This is an actual photograph of recorder chart.

POINT	PRESSURE		Elec. Office Reading	PSI
	Field Reading			
(A) Initial Hydrostatic Mud	2094	2094		PSI
(B) First Initial Flow Pressure.....	14	14		PSI
(C) First Final Flow Pressure	15	15		PSI
(D) Initial Closed-in Pressure	476	476		PSI
(E) Second Initial Flow Pressure	15	15		PSI
(F) Second Final Flow Pressure.....	16	16		PSI
(G) Final Closed-in Pressure.....	480	480		PSI
(H) Final Hydrostatic Mud.....	2082	2082		PSI



DIAMOND TESTING
P.O. Box 157
HOISINGTON, KANSAS 67544
(620) 653-7550 • (800) 542-7313

Company Mull Drilling Co., Inc. Lease & Well No. Dorthea Unit No. 1-7
Elevation 2790KB Formation Marmaton Effective Pay -- Ft. Ticket No. 2370
Date 9-12-07 Sec. 7 Twp. 17S Range 28W County Lane State Kansas
Test Approved By Kevin Kessler Diamond Representative Roger D. Friedly

Formation Test No. 4 Interval Tested from 4,335 ft. to 4,445 ft. Total Depth 4,445 ft.
Packer Depth 4,330 ft. Size 6 3/4 in. Packer Depth -- ft. Size -- in.
Packer Depth 4,335 ft. Size 6 3/4 in. Packer Depth -- ft. Size -- in.
Depth of Selective Zone Set ft.

Top Recorder Depth (Inside) 4,324 ft. Recorder Number 30035 Cap. 5,000 psi
Bottom Recorder Depth (Outside) 4,442 ft. Recorder Number 13387 Cap. 4,000 psi
Below Straddle Recorder Depth ft. Recorder Number Cap. psi

Drilling Contractor Duke Drilling Co., Inc. - Rig 4 Drill Collar Length -- ft. I.D. -- in.
Mud Type Chemical Viscosity 46 Weight Pipe Length -- ft. I.D. -- in.
Weight 9.2 Water Loss 10.4 cc. Drill Pipe Length 4,311 ft. I.D. 3 1/2 in.
Chlorides 3,700 P.P.M. Test Tool Length 24 ft. Tool Size 3 1/2-IF in.
Jars: Make Bowen Serial Number Not Run Anchor Length 47' perf. w/ 63' drill pipe Size 4 1/2-FH in.
Did Well Flow? No Reversed Out No Surface Choke Size 1 in. Bottom Choke Size 5/8 in.
Main Hole Size 7 7/8 in. Tool Joint Size 4 1/2-XH in.

Blow: 1st Open: Weak, surface blow increasing to 1/4 in. No blow back during shut-in.
2nd Open: No blow. No blow back during shut-in.

Recovered 10 ft. of drilling mud = .142000 bbls.

Recovered ft. of

Recovered ft. of

Recovered ft. of

Recovered ft. of

Remarks Tool Sample Grind Out: 100%-drilling mud with a few oil specks

Time Set Packer(s) 6:40 ~~AM~~ P.M. Time Started Off Bottom 8:50 ~~AM~~ P.M. Maximum Temperature 114°
Initial Hydrostatic Pressure (A) 2140 P.S.I.
Initial Flow Period Minutes 10 (B) 14 P.S.I. to (C) 16 P.S.I.
Initial Closed In Period Minutes 30 (D) 656 P.S.I.
Final Flow Period Minutes 30 (E) 17 P.S.I. to (F) 19 P.S.I.
Final Closed In Period Minutes 60 (G) 664 P.S.I.
Final Hydrostatic Pressure (H) 2121 P.S.I.

GENERAL INFORMATION

Client Information:

Company: MULL DRILLING CO., INC.

Contact: ERNIE MORRISON

Phone: Fax: e-mail:

Site Information:

Contact: KEVIN KESSLER

Phone: Fax: e-mail:

Well Information:

Name: DORTHEA UNIT #1-7

Operator: MULL DRILLING CO., INC.

Location-Downhole: DST #4 MARMATON 4,335' - 4,445'

Location-Surface: SEC 7-17S-28W LANE COUNTY

Test Information:

Company: DIAMOND TESTING

Representative: ROGER D. FRIEDLY

Supervisor: KEVIN KESSLER

Test Type: CONVENTIONAL Job Number:

Test Unit: NO. 1

Start Date: 2007/09/12 Start Time: 16:30:00

End Date: 2007/09/12 End Time: 22:44:00

Report Date: Prepared By:

Qualified By:

Remarks:

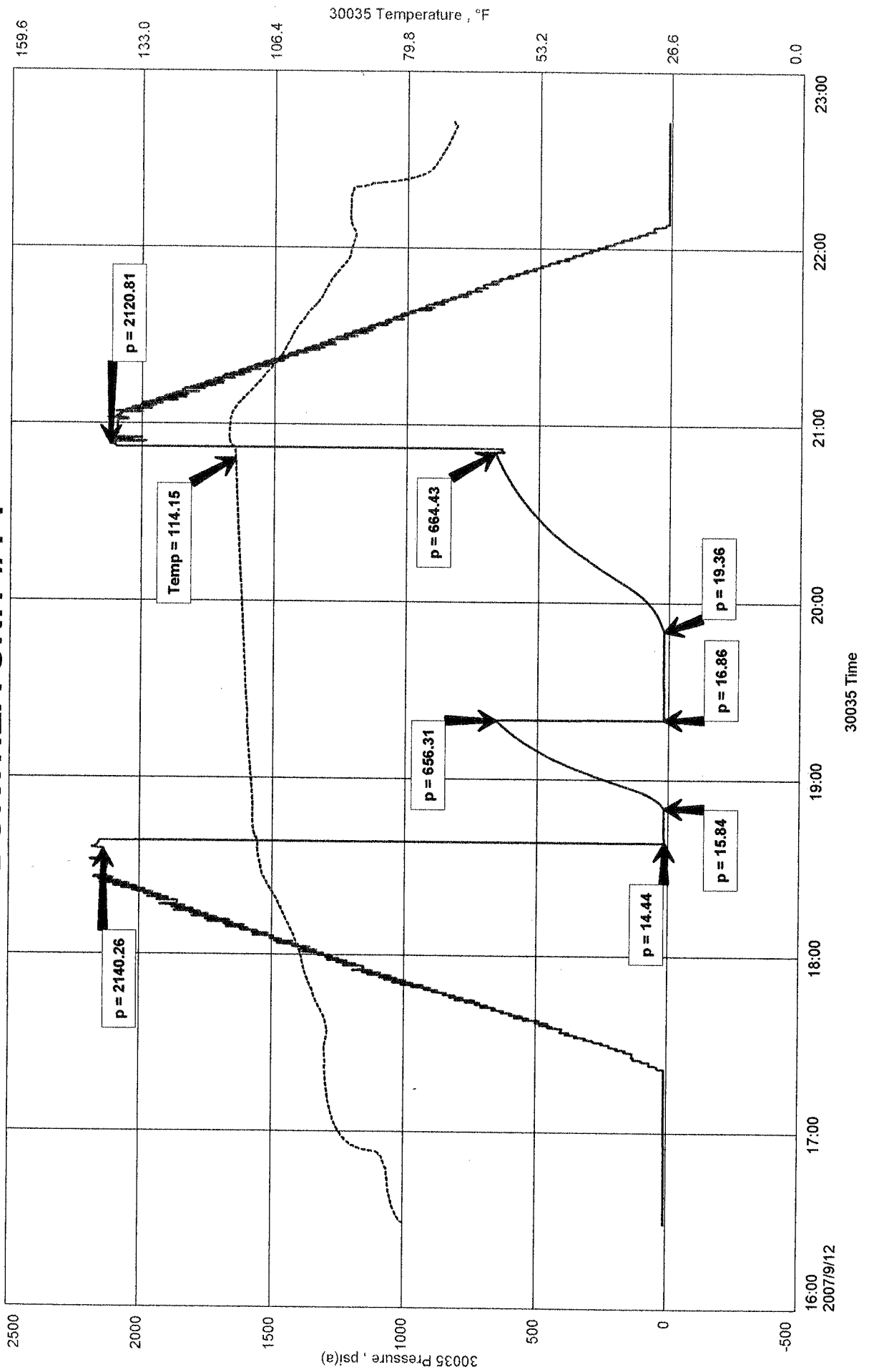
RECOVERED: 10' DRILLING MUD

TOOL SAMPLE: 100% DM WITH A FEW OIL SPECKS

MULL DRILLING CO., INC.
 DST #4 MARMATON 4,335' - 4,445'
 Start Test Date: 2007/09/12
 Final Test Date: 2007/09/12

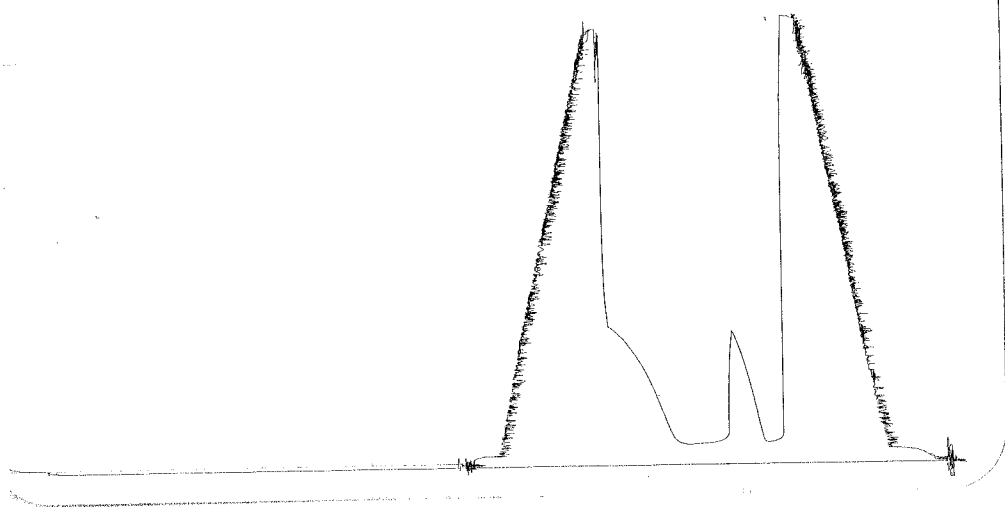
DORTHEA UNIT #1-7
 Formation: DST #4 MARMATON 4,335' - 4,445'
 Pool: WILDCAT

DORTHEA UNIT #1-7



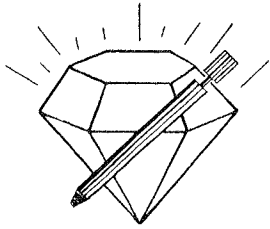
DST # 4 @ W 114 & 03387
 Flare

4335-4445
 LOC 4442



This is an actual photograph of recorder chart.

POINT	PRESSURE		Elec. Office Reading	PSI
	Field Reading			
(A) Initial Hydrostatic Mud	2140	2140		PSI
(B) First Initial Flow Pressure.....	14	14		PSI
(C) First Final Flow Pressure	16	16		PSI
(D) Initial Closed-in Pressure	656	656		PSI
(E) Second Initial Flow Pressure.....	17	17		PSI
(F) Second Final Flow Pressure.....	19	19		PSI
(G) Final Closed-in Pressure	664	664		PSI
(H) Final Hydrostatic Mud	2121	2121		PSI



DIAMOND TESTING

P.O. Box 157
HOISINGTON, KANSAS 67544
(620) 653-7550 • (800) 542-7313

Company Mull Drilling Co., Inc. Lease & Well No. Dorthea Unit No. 1-7
Elevation 2790KB Formation Ft. Scott/Cherokee Effective Pay -- Ft. Ticket No. 2371
Date 9-13-07 Sec. 7 Twp. 17S Range 28W County Lane State Kansas
Test Approved By Kevin Kessler Diamond Representative Roger D. Friedly

Formation Test No. 5 Interval Tested from 4,460 ft. to 4,530 ft. Total Depth 4,530 ft.
Packer Depth 4,455 ft. Size 6 3/4 in. Packer Depth -- ft. Size -- in.
Packer Depth 4,460 ft. Size 6 3/4 in. Packer Depth -- ft. Size -- in.
Depth of Selective Zone Set ft.

Top Recorder Depth (Inside) 4,449 ft. Recorder Number 30035 Cap. 5,000 psi
Bottom Recorder Depth (Outside) 4,527 ft. Recorder Number 13387 Cap. 4,000 psi
Below Straddle Recorder Depth ft. Recorder Number Cap. psi

Drilling Contractor Duke Drilling Co., Inc. - Rig 4 Drill Collar Length -- ft. I.D. -- in.
Mud Type Chemical Viscosity 46 Weight Pipe Length -- ft. I.D. -- in.
Weight 9.2 Water Loss 10.4 cc. Drill Pipe Length 4,436 ft. I.D. 3 1/2 in.
Chlorides 3,900 P.P.M. Test Tool Length 24 ft. Tool Size 3 1/2 - IF in.
Jars: Make Bowen Serial Number Not Run Anchor Length 39' perf. w/ 31' drill pipe Size 4 1/2 - FH in.
Did Well Flow? No Reversed Out No Surface Choke Size 1 in. Bottom Choke Size 5/8 in.
Main Hole Size 7 7/8 in. Tool Joint Size 4 1/2 - XH in.

Blow: 1st Open: Weak, surface blow increasing to 1/2 in. No blow back during shut-in.
2nd Open: Weak, surface blow in 9 mins., increasing to 1/2 in. No blow back during shut-in.

Recovered 20 ft. of oil cut mud = .284000 bbls. (Grind out: 4%-oil; 96%-mud)
Recovered ft. of
Recovered ft. of
Recovered ft. of
Recovered ft. of
Remarks Tool Sample Grind Out: 8%-oil; 92%-mud

Time Set Packer(s) 3:15 ~~XXX~~ P.M. Time Started Off Bottom 5:25 ~~XXX~~ P.M. Maximum Temperature 115°
Initial Hydrostatic Pressure (A) 2160 P.S.I.
Initial Flow Period Minutes 10 (B) 13 P.S.I. to (C) 17 P.S.I.
Initial Closed In Period Minutes 30 (D) 578 P.S.I.
Final Flow Period Minutes 30 (E) 17 P.S.I. to (F) 22 P.S.I.
Final Closed In Period Minutes 30 (G) 485 P.S.I.
Final Hydrostatic Pressure (H) 2155 P.S.I.

GENERAL INFORMATION

Client Information:

Company: MULL DRILLING CO., INC.
Contact: ERNIE MORRISON
Phone: Fax: e-mail:

Site Information:

Contact: KEVIN KESSLER
Phone: Fax: e-mail:

Well Information:

Name: DORTHEA UNIT #1-7
Operator: MULL DRILLING CO., INC.
Location-Downhole: DST #5 FT SCOTT / CHEROKEE 4,460' - 4,530'
Location-Surface: SEC 7-17S-28W LANE COUNTY

Test Information:

Company: DIAMOND TESTING
Representative: ROGER D. FRIEDLY
Supervisor: KEVIN KESSLER
Test Type: CONVENTIONAL Job Number:
Test Unit: NO. 1
Start Date: 2007/09/13 Start Time: 13:10:00
End Date: 2007/09/13 End Time: 19:20:00
Report Date: Prepared By:

Remarks:

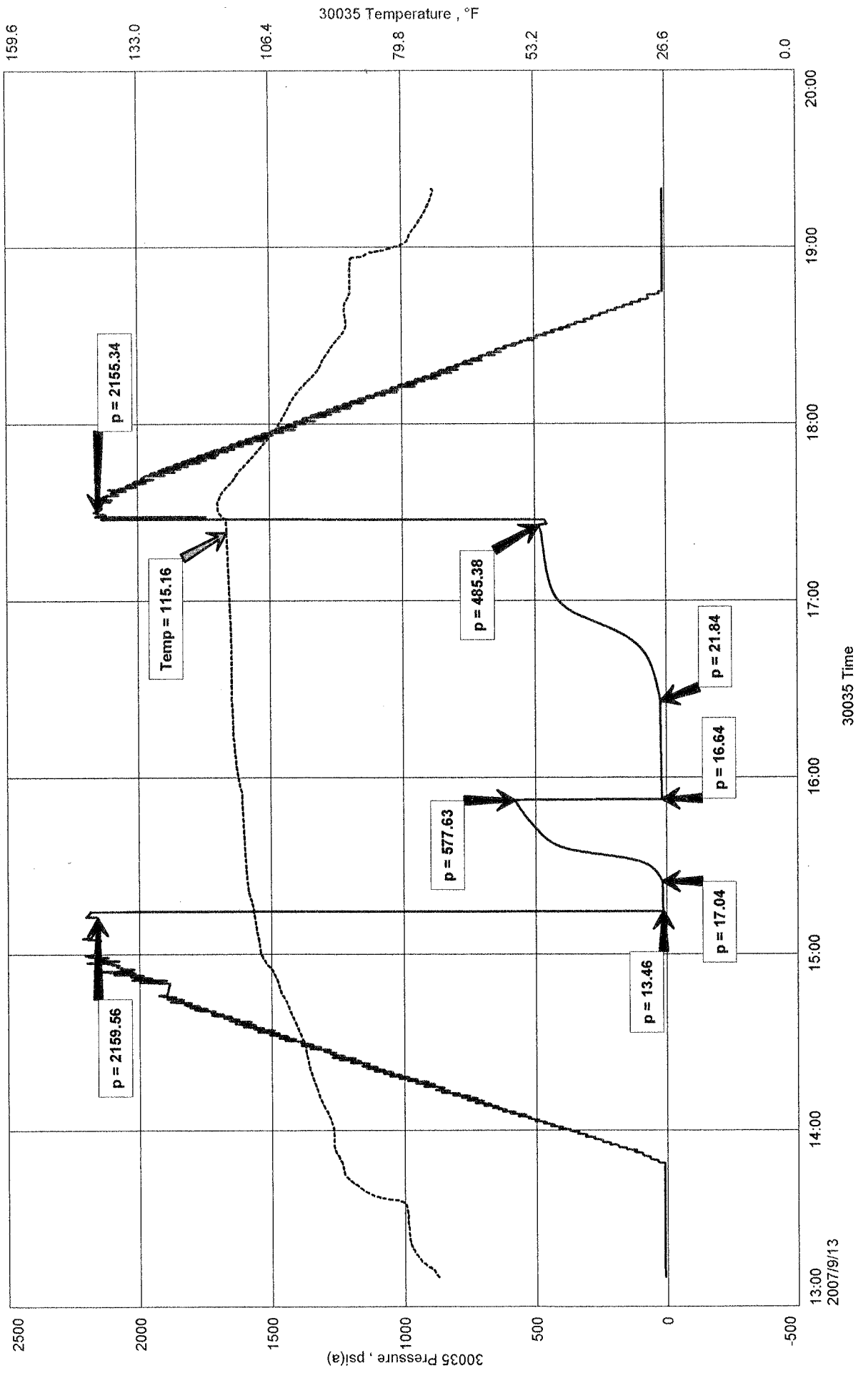
RECOVERED: 20' OCM 4% OIL, 96% MUD
TOOL SAMPLE: 8% OIL, 92% MUD

Qualified By:

MULL DRILLING CO., INC.
 DST #5 FT SCOTT / CHEROKEE 4,460' - 4,530'
 Start Test Date: 2007/09/13
 Final Test Date: 2007/09/13

DORTHEA UNIT #1-7
 Formation: DST #5 FT SCOTT / CHEROKEE 4,460' - 4,530'
 Pool: WILDCAT

DORTHEA UNIT #1-7



30035 Temperature, °F

30035 Pressure, ps(a)

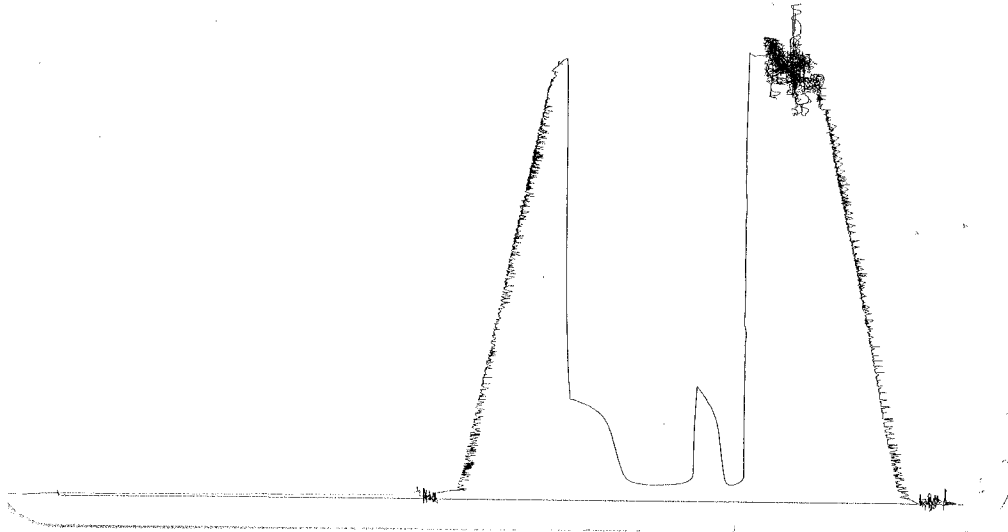
13:00
2007/9/13

30035 Time

159.6
133.0
106.4
79.8
53.2
26.6
0.0

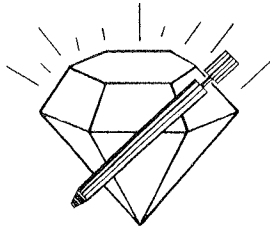
DST # 5 outside 13387
 FT Scott / Chero.

4420 4530
 hbl 4527



This is an actual photograph of recorder chart.

POINT	PRESSURE Elec.		
	Field Reading	Office Reading	
(A) Initial Hydrostatic Mud	2160	2160	PSI
(B) First Initial Flow Pressure	13	13	PSI
(C) First Final Flow Pressure	17	17	PSI
(D) Initial Closed-in Pressure	578	578	PSI
(E) Second Initial Flow Pressure	17	17	PSI
(F) Second Final Flow Pressure	22	22	PSI
(G) Final Closed-in Pressure	485	485	PSI
(H) Final Hydrostatic Mud	2155	2155	PSI



DIAMOND TESTING

P.O. Box 157

HOISINGTON, KANSAS 67544

(620) 653-7550 • (800) 542-7313

Page 1 of 2 Pages

Company Mull Drilling Co., Inc. Lease & Well No. Dorthea Unit No. 1-7

Elevation 2790KB Formation Johnson Effective Pay -- Ft. Ticket No. 2372

Date 9-14-07 Sec. 7 Twp. 17S Range 28W County Lane State Kansas

Test Approved By Kevin Kessler Diamond Representative Roger D. Friedly

Formation Test No. 6 Interval Tested from 4,515 ft. to 4,555 ft. Total Depth 4,555 ft.

Packer Depth 4,510 ft. Size 6 3/4 in. Packer Depth -- ft. Size -- in.

Packer Depth 4,515 ft. Size 6 3/4 in. Packer Depth -- ft. Size -- in.

Depth of Selective Zone Set ft.

Top Recorder Depth (Inside) 4,504 ft. Recorder Number 30035 Cap. 5,000 psi

Bottom Recorder Depth (Outside) 4,552 ft. Recorder Number 13387 Cap. 4,000 psi

Below Straddle Recorder Depth ft. Recorder Number Cap. psi

Drilling Contractor Duke Drilling Co., Inc. - Rig 4 Drill Collar Length -- ft. I.D. -- in.

Mud Type Chemical Viscosity 46 Weight Pipe Length -- ft. I.D. -- in.

Weight 9.2 Water Loss 10.4 cc. Drill Pipe Length 4,491 ft. I.D. 3 1/2 in.

Chlorides 3,900 P.P.M. Test Tool Length 24 ft. Tool Size 3 1/2 - IF in.

Jars: Make Bowen Serial Number Not Run Anchor Length 40 ft. Size 4 1/2 - FH in.

Did Well Flow? No Reversed Out No Surface Choke Size 1 in. Bottom Choke Size 5/8 in.

Main Hole Size 7 7/8 in. Tool Joint Size 4 1/2 - XH in.

Blow: 1st Open: Weak, surface blow, increasing to 1/4 in. No blow back during shut-in.

2nd Open: No blow.

Recovered 2 ft. of drilling mud = .028400 bbls.

Recovered ft. of

Recovered ft. of

Recovered ft. of

Recovered ft. of

Remarks Tool Sample Grind Out: 100%-drilling mud with a few oil specks

Time Set Packer(s) 5:15 ~~XXX~~ A.M. Time Started Off Bottom 7:25 ~~XXX~~ A.M. Maximum Temperature 116°

Initial Hydrostatic Pressure (A) 2202 P.S.I.

Initial Flow Period Minutes 10 (B) 13 P.S.I. to (C) 16 P.S.I.

Initial Closed In Period Minutes 30 (D) 484 P.S.I.

Final Flow Period Minutes 30 (E) 13 P.S.I. to (F) 17 P.S.I.

Final Closed In Period Minutes 60 (G) 563 P.S.I.

Final Hydrostatic Pressure (H) 2203 P.S.I.

GENERAL INFORMATION

Client Information:

Company: MULL DRILLING CO., INC.
Contact: ERNIE MORRISON
Phone: Fax: e-mail:

Site Information:

Contact: KEVIN KESSLER
Phone: Fax: e-mail:

Well Information:

Name: DORTHEA UNIT #1-7
Operator: MULL DRILLING CO., INC.
Location-Downhole: DST #6 JOHNSON 4,515' - 4,555'
Location-Surface: SEC 7-17S-28W LANE COUNTY

Test Information:

Company: DIAMOND TESTING
Representative: ROGER D. FRIEDLY
Supervisor: KEVIN KESSLER
Test Type: CONVENTIONAL Job Number:
Test Unit: NO. 1
Start Date: 2007/09/14 Start Time: 02:55:00
End Date: 2007/09/14 End Time: 09:30:00
Report Date: Prepared By:
Remarks: Qualified By:

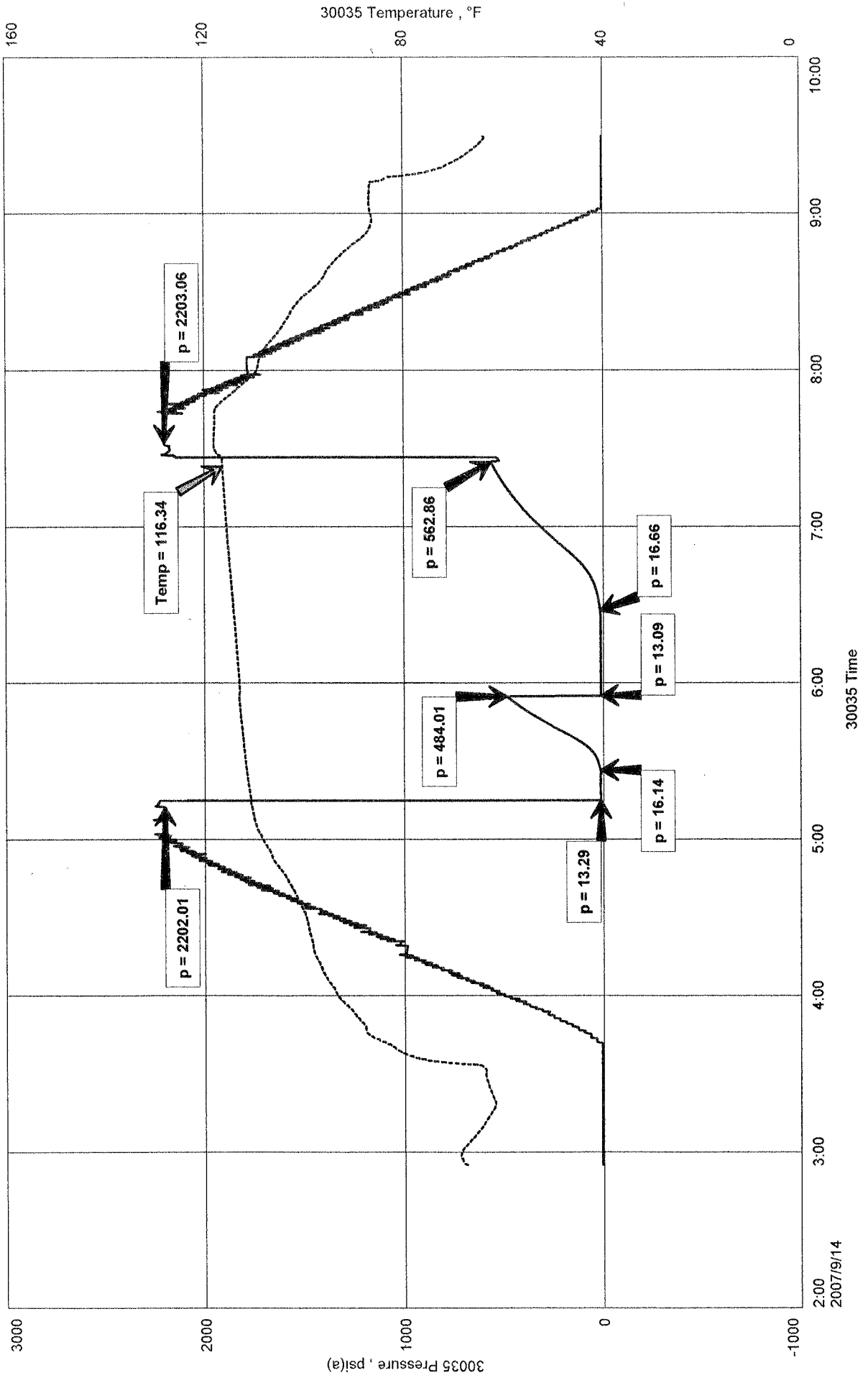
RECOVERED: 2' DRILLING MUD

TOOL SAMPLE: 100% DM WITH FEW OIL SPECKS

MULL DRILLING CO., INC.
 DORTHEA UNIT #1-7
 Formation: DST #6 JOHNSON 4,515' - 4,555'
 Pool: WILDCAT

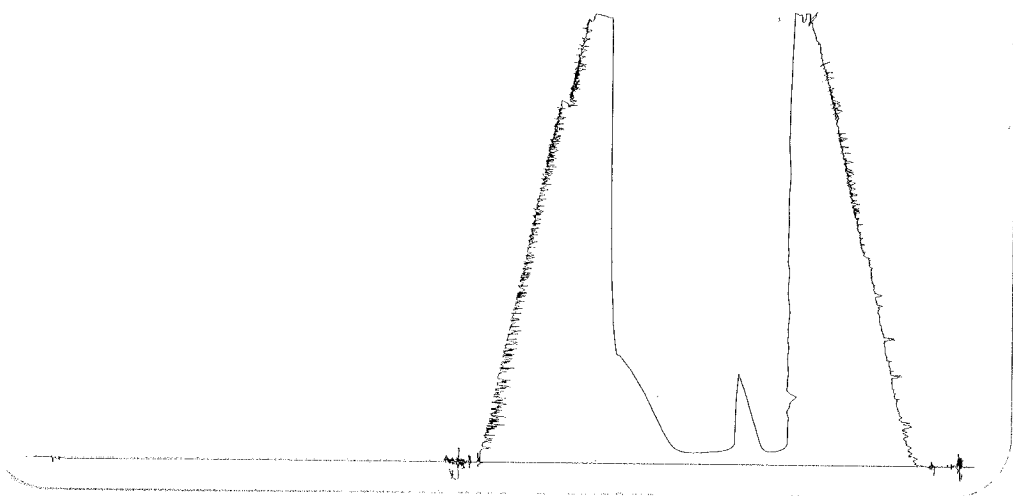
Start Test Date: 2007/09/14
 Final Test Date: 2007/09/14

DORTHEA UNIT #1-7



DIT #6 Outside 13387
 JOHNSON

4515-4555
 WDC 4552



This is an actual photograph of recorder chart.

POINT	PRESSURE Elec.		
	Field Reading	Office Reading	
(A) Initial Hydrostatic Mud	2202	2202	PSI
(B) First Initial Flow Pressure.....	13	13	PSI
(C) First Final Flow Pressure	16	16	PSI
(D) Initial Closed-in Pressure	484	484	PSI
(E) Second Initial Flow Pressure	13	13	PSI
(F) Second Final Flow Pressure.....	17	17	PSI
(G) Final Closed-in Pressure.....	563	563	PSI
(H) Final Hydrostatic Mud	2203	2203	PSI