

15-101-22049

32-17s-29w

DIAMOND TESTING

P.O. Box 157

HOISINGTON, KANSAS 67544

(620) 653-7550 • (800) 542-7313

Company O'Brien Energy Co. Lease & Well No. Dowd No. 32-1

Elevation 2793KB Formation Altamont Effective Pay -- Ft. Ticket No. 2382

Date 10-3-07 Sec. 32 Twp. 17S Range 29W County Lane State Kansas

Test Approved By Kim B. Shoemaker Diamond Representative Roger D. Friedly

Formation Test No. 1 Interval Tested from 4,267 ft. to 4,360 ft. Total Depth 4,360 ft.

Packer Depth 4,262 ft. Size 6 3/4 in. Packer Depth -- ft. Size -- in.

Packer Depth 4,267 ft. Size 6 3/4 in. Packer Depth -- ft. Size -- in.

Depth of Selective Zone Set ft.

Top Recorder Depth (Inside) 4,250 ft. Recorder Number 30035 Cap. 5,000 psi

Bottom Recorder Depth (Outside) 4,357 ft. Recorder Number 13387 Cap. 4,000 psi

Below Straddle Recorder Depth ft. Recorder Number Cap. psi

Drilling Contractor W. W. Drilling - Rig 2 Drill Collar Length 123 ft. I.D. 2 1/4 in.

Mud Type Chemical Viscosity 46 Weight Pipe Length -- ft. I.D. -- in.

Weight 9.6 Water Loss 9.2 cc. Drill Pipe Length 4,113 ft. I.D. 3 1/2 in.

Chlorides 2,000 P.P.M. Test Tool Length 31 ft. Tool Size 3 1/2 - IF in.

Jars: Make Bowen Serial Number No. 1 Anchor Length 31' perf. w/ 62' drill pipe Size 4 1/2 - FH in.

Did Well Flow? No Reversed Out No Surface Choke Size 1 in. Bottom Choke Size 5/8 in.

Main Hole Size 7 7/8 in. Tool Joint Size 4 1/2 - XH in.

Blow: 1st Open: Weak, 1/4 in., blow throughout. No blow back during shut-in.

2nd Open: No blow. No blow back during shut-in.

Recovered 3 ft. of drilling mud = .014760 bbls. (Grind out: 100%-drilling mud)

Recovered ft. of

Recovered ft. of

Recovered ft. of

Recovered ft. of

Remarks Tool Sample Grind Out: 100%-drilling mud with a few oil specks

Time Set Packer(s) 10:58 ~~A.M.~~ ~~R.M.~~ Time Started Off Bottom 1:58 ~~A.M.~~ ~~P.M.~~ Maximum Temperature 117°

Initial Hydrostatic Pressure (A) 2100 P.S.I.

Initial Flow Period Minutes 30 (B) 11 P.S.I. to (C) 13 P.S.I.

Initial Closed In Period Minutes 45 (D) 37 P.S.I.

Final Flow Period Minutes 45 (E) 12 P.S.I. to (F) 12 P.S.I.

Final Closed In Period Minutes 60 (G) 24 P.S.I.

Final Hydrostatic Pressure (H) 2099 P.S.I.

GENERAL INFORMATION

Client Information:

Company: O'BRIEN ENERGY CO.

Contact: JIM ROBBINS

Phone: Fax: e-mail:

Site Information:

Contact: KIM SHOEMAKER

Phone: Fax: e-mail:

Well Information:

Name: DOWD #32-1

Operator: O'BRIEN ENERGY CO.

Location-Downhole: DST #1 ALTAMONT 4,267' - 4,360'

Location-Surface: SEC 32-17S-19W LANE COUNTY

Test Information:

Company: DIAMOND TESTING

Representative: ROGER D. FRIEDLY

Supervisor: KIM SHOEMAKER

Test Type: CONVENTIONAL Job Number:

Test Unit: NO. 1

Start Date: 2007/10/03 Start Time: 08:09:00

End Date: 2007/10/03 End Time: 16:37:00

Report Date: Prepared By:

Remarks: Qualified By:

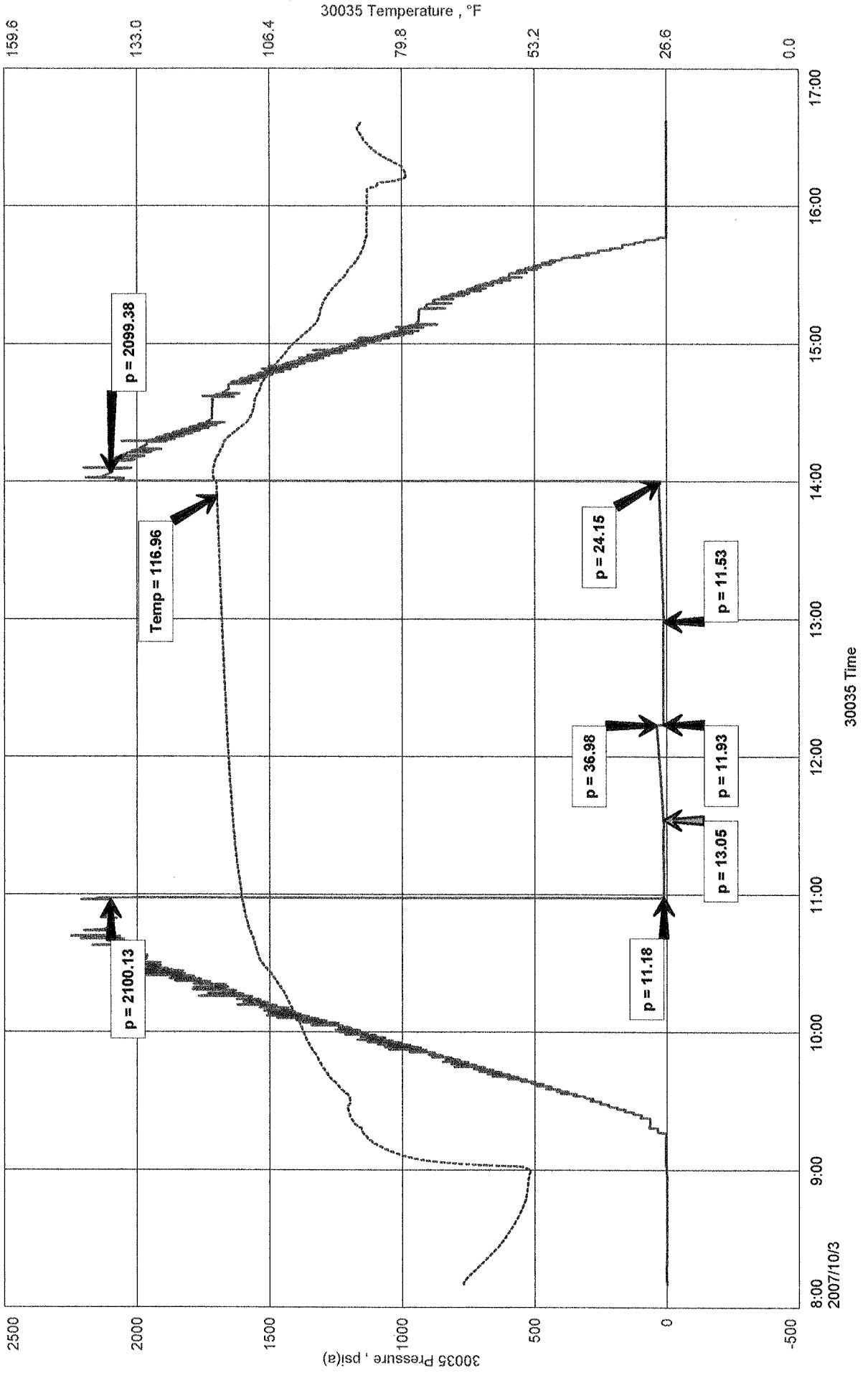
RECOVERED: 3' DRILLING MUD

TOOL SAMPLE: 100% DM WITH A FEW OIL SPECKS

O'BRIEN ENERGY CO.
 DST #1 ALTAMONT 4,267' - 4,360'
 Start Test Date: 2007/10/03
 Final Test Date: 2007/10/03

DOWD #32-1
 Formation: DST #1 ALTAMONT 4,267' - 4,360'
 Pool: WILDCAT

DOWD #32-1



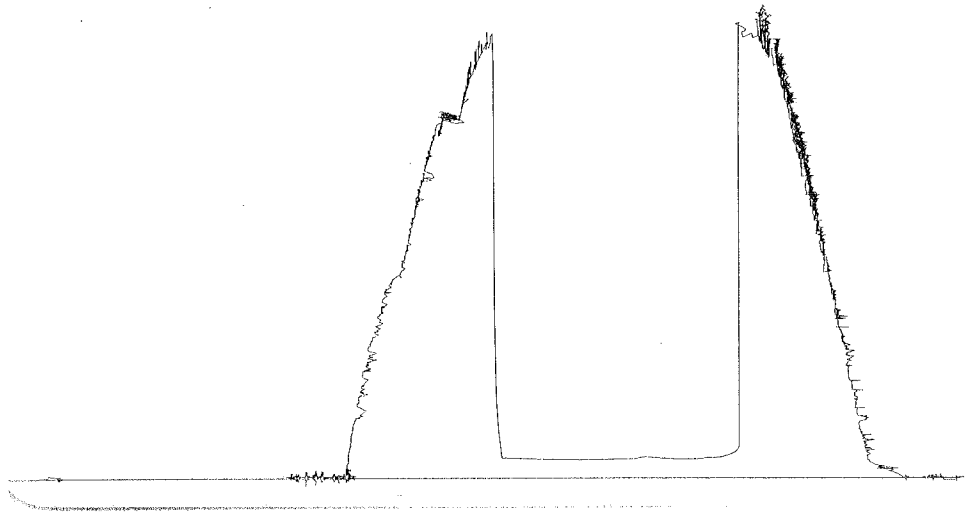
DST #1 BWT-140

13881

Altamont

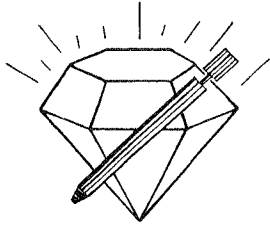
4200 - 13000

206 4357



This is an actual photograph of recorder chart.

POINT	PRESSURE		PSI
	Field Reading	Elec. Office Reading	
(A) Initial Hydrostatic Mud	2100	2100	PSI
(B) First Initial Flow Pressure	11	11	PSI
(C) First Final Flow Pressure	13	13	PSI
(D) Initial Closed-in Pressure	37	37	PSI
(E) Second Initial Flow Pressure	12	12	PSI
(F) Second Final Flow Pressure	12	12	PSI
(G) Final Closed-in Pressure	24	24	PSI
(H) Final Hydrostatic Mud	2099	2099	PSI



DIAMOND TESTING

P.O. Box 157
HOISINGTON, KANSAS 67544
(620) 653-7550 • (800) 542-7313

Company O'Brien Energy Co. Lease & Well No. Dowd No. 32-1
Elevation 2793KB Formation Myrick/Johnson Effective Pay -- Ft. Ticket No. 2383
Date 10-4-07 Sec. 32 Twp. 17S Range 29W County Lane State Kansas
Test Approved By Kim B. Shoemaker Diamond Representative Roger D. Friedly

Formation Test No. 2 Interval Tested from 4,410 ft. to 4,515 ft. Total Depth 4,515 ft.
Packer Depth 4,405 ft. Size 6 3/4 in. Packer Depth -- ft. Size -- in.
Packer Depth 4,410 ft. Size 6 3/4 in. Packer Depth -- ft. Size -- in.
Depth of Selective Zone Set ft.

Top Recorder Depth (Inside) 4,393 ft. Recorder Number 30035 Cap. 5,000 psi
Bottom Recorder Depth (Outside) 4,512 ft. Recorder Number 13387 Cap. 4,000 psi
Below Straddle Recorder Depth ft. Recorder Number Cap. psi

Drilling Contractor W. W. Drilling - Rig 2 Drill Collar Length 123 ft. I.D. 2 1/4 in.
Mud Type Chemical Viscosity 51 Weight Pipe Length -- ft. I.D. -- in.
Weight 9.6 Water Loss 9.2 cc. Drill Pipe Length 4,256 ft. I.D. 3 1/2 in.
Chlorides 2,000 P.P.M. Test Tool Length 31 ft. Tool Size 3 1/2 - IF in.
Jars: Make Bowen Serial Number No. 1 Anchor Length 105 ft. Size 4 1/2 - FH in.
Did Well Flow? No Reversed Out No Surface Choke Size 1 in. Bottom Choke Size 5/8 in.
Main Hole Size 7 7/8 in. Tool Joint Size 4 1/2 - XH in.

Blow: 1st Open: Weak, 1/8 in., blow increasing to 1/4 in. Decreasing in 15 mins. Weak surface blow at end. No blow back during shut-in.
2nd Open: Weak, surface blow throughout. No blow back during shut-in.

Recovered 70 ft. of oil cut mud = .344400 bbls. (Grind out: 6%-oil; 94%-mud)
Recovered ft. of
Recovered ft. of
Recovered ft. of
Recovered ft. of
Remarks Tool Sample Grind Out: 8%-oil; 92%-mud

Time Set Packer(s) 9:39 A.M. RXX Time Started Off Bottom 11:39 A.M. RXX Maximum Temperature 117°
Initial Hydrostatic Pressure (A) 2206 P.S.I.
Initial Flow Period Minutes 30 (B) 13 P.S.I. to (C) 34 P.S.I.
Initial Closed In Period Minutes 30 (D) 878 P.S.I.
Final Flow Period Minutes 30 (E) 36 P.S.I. to (F) 46 P.S.I.
Final Closed In Period Minutes 30 (G) 577 P.S.I.
Final Hydrostatic Pressure (H) 2204 P.S.I.

GENERAL INFORMATION

Client Information:

Company: O'BRIEN ENERGY CO.

Contact: JIM ROBBINS

Phone: Fax: e-mail:

Site Information:

Contact: KIM SHOEMAKER

Phone: Fax: e-mail:

Well Information:

Name: DOWD #32-1

Operator: O'BRIEN ENERGY CO.

Location-Downhole: DST #2 MYRICK / JOHNSON 4,410' - 4,515'

Location-Surface: SEC 32-17S-29W LANE COUNTY

Test Information:

Company: DIAMOND TESTING

Representative: ROGER D. FRIEDLY

Supervisor: KIM SHOEMAKER

Test Type: CONVENTIONAL Job Number:

Test Unit: NO. 1

Start Date: 2007/10/04 Start Time: 06:59:00

End Date: 2007/10/04 End Time: 14:00:00

Report Date: Prepared By:

Remarks: Qualified By:

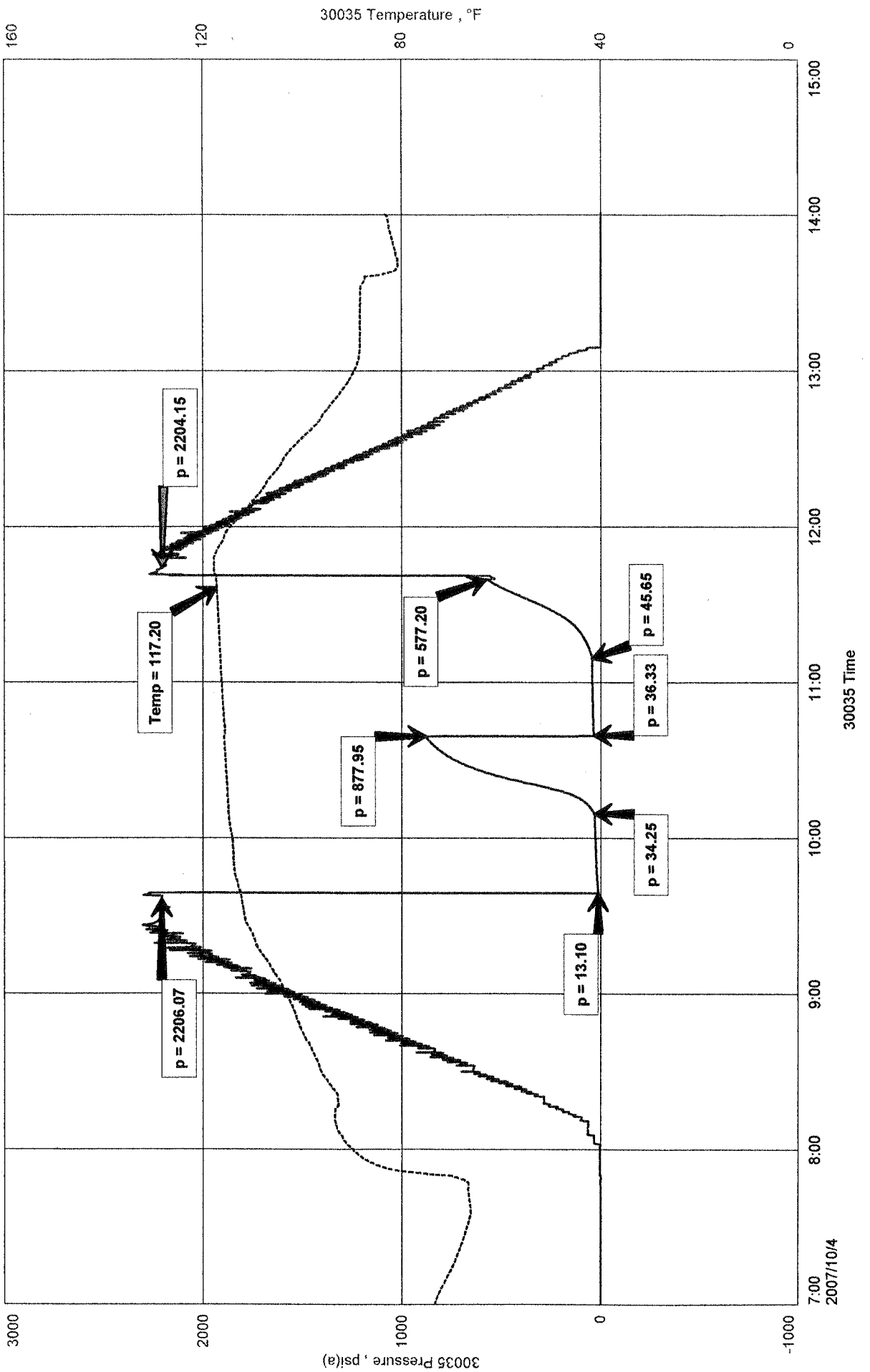
RECOVERED: 70' OCM 6% OIL, 94% MUD

TOOL SAMPLE: 8% OIL, 92% MUD

O'BRIEN ENERGY CO.
 DST #2 MYRICK / JOHNSON 4,410' - 4,515'
 Start Test Date: 2007/10/04
 Final Test Date: 2007/10/04

DOWD #32-1
 Formation: DST #2 MYRICK / JOHNSON 4,410' - 4,515'
 Pool: WILDCAT

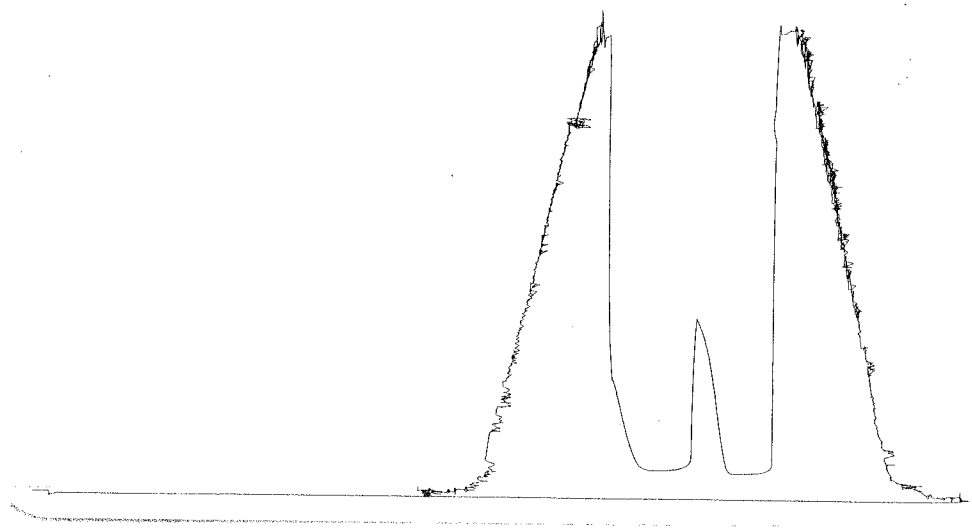
DOWD #32-1



DST # 2 outside 13387

Mirick/John

4410-4518
LOC 4512



This is an actual photograph of recorder chart.

POINT	PRESSURE		Elec. Office Reading	PSI
	Field Reading	Office Reading		
(A) Initial Hydrostatic Mud	2206	2206		PSI
(B) First Initial Flow Pressure	13	13		PSI
(C) First Final Flow Pressure	34	34		PSI
(D) Initial Closed-in Pressure	878	878		PSI
(E) Second Initial Flow Pressure	36	36		PSI
(F) Second Final Flow Pressure	46	46		PSI
(G) Final Closed-in Pressure	577	577		PSI
(H) Final Hydrostatic Mud	2204	2204		PSI