

RECEIVED
JAN 06 2004
KCC WICHITA

DIAMOND TESTING
P.O. Box 157
HOISINGTON, KANSAS 67544
(620) 653-7550 • (800) 542-7313
STC 21076.D80

Company Ritchie Exploration, Inc. Lease & Well No. B. Brooks No. 1
Elevation 2898 KB Formation Lansing/Kansas City "C" Effective Pay --Ft. Ticket No. 1782
Date 10-15-03 Sec. 6 Twp. 17S Range 30W County Lane State Kansas

Test Approved By Kim B. Shoemaker Diamond Representative Roger D. Friedly

Formation Test No. 1 Interval Tested from 3,976 ft. to 4,000 ft. Total Depth 4,000 ft.
Packer Depth 3,971 ft. Size 6 3/4 in. Packer Depth -- ft. Size -- in.
Packer Depth 3,976 ft. Size 6 3/4 in. Packer Depth -- ft. Size -- in.
Depth of Selective Zone Set ft.

Top Recorder Depth (Inside) 3,964 ft. Recorder Number Elec. Cap. 5,000 psi
Bottom Recorder Depth (Outside) 3,997 ft. Recorder Number 13386 Cap. 4,000 psi
Below Straddle Recorder Depth ft. Recorder Number Cap. psi

Drilling Contractor L. D. Drilling, Inc. - Rig 1 Drill Collar Length -- ft. I.D. -- in.
Mud Type Chemical Viscosity 47 Weight Pipe Length -- ft. I.D. -- in.
Weight 9.2 Water Loss 10.0 cc. Drill Pipe Length 3,951 ft. I.D. 3 1/2 in.
Chlorides 3,000 P.P.M. Test Tool Length 25 ft. Tool Size 3 1/2 - IF in.
Jars: Make Bowen Serial Number Not Run Anchor Length 24 ft. Size 4 1/2 - FH in.
Did Well Flow? No Reversed Out No Surface Choke Size 1 in. Bottom Choke Size 5/8 in.
Main Hole Size 7 7/8 in. Tool Joint Size 4 1/2 - XH in.

Blow: 1st Open: Weak, 1/2 in., blow increasing to 1 in. No blow back during shut-in.
2nd Open: Weak, surface blow throughout. No blow back during shut-in.

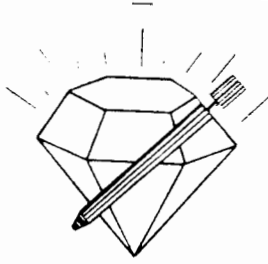
Recovered 20 ft. of drilling mud = .205200 bbls.
Recovered ft. of
Recovered ft. of
Recovered ft. of
Recovered ft. of

Remarks Tool Sample Grind Out: All drilling mud. No show.

RELEASED

FROM CONFIDENTIAL

Time Set Packer(s) 1:05 P.M. Time Started Off Bottom 3:05 P.M. Maximum Temperature 113°
Initial Hydrostatic Pressure (A) 1912 P.S.I.
Initial Flow Period Minutes 30 (B) 10 P.S.I. to (C) 14 P.S.I.
Initial Closed In Period Minutes 30 (D) 968 P.S.I.
Final Flow Period Minutes 30 (E) 14 P.S.I. to (F) 16 P.S.I.
Final Closed In Period Minutes 30 (G) 932 P.S.I.
Final Hydrostatic Pressure (H) 1911 P.S.I.



DIAMOND TESTING
P. O. Box 157
HOISINGTON, KANSAS 67544
(800) 542-7313

FLUID SAMPLE DATA

Company Ritchie Exploration, Inc.
Lease & Well No. B. Brooks No. 1
Date 10-15-03 Sec. 6 Twp. 17 S Range 30 W
Formation Test No. 1 Interval Tested From 3,976 ft. to 4,000 ft. Total Depth 4,000 ft.
Formation Lansing/Kansas City "C"

	RECEIVED	MUD PIT	RECOVERY
Viscosity	JAN 06 2004	<u>47</u> CP	<u>49</u> CP
Weight	KCC WICHITA	<u>9.2</u>	<u>9.15</u>
Water Loss		<u>10.0</u> CC	<u>10.0</u> CC
PH Factor		<u>10.5</u>	<u>10.5</u>

	RESISTIVITY	CHLORIDE CONTENT
Recovery Water	<u>-- @ -- °F.</u>	<u>--</u> ppm
Recovery Mud	<u>.90 @ 80 °F.</u>	<u>6,000</u> ppm
Recovery Mud Filtrate	<u>1.10 @ 82 °F.</u>	<u>5,000</u> ppm
Mud Pit Sample	<u>.86 @ 82 °F.</u>	<u>6,200</u> ppm
Mud Pit Sample Filtrate	<u>.92 @ 84 °F.</u>	<u>5,600</u> ppm

Sample Taken By ROGER D. FRIEDLY

Witness By Kim B. Shoemaker

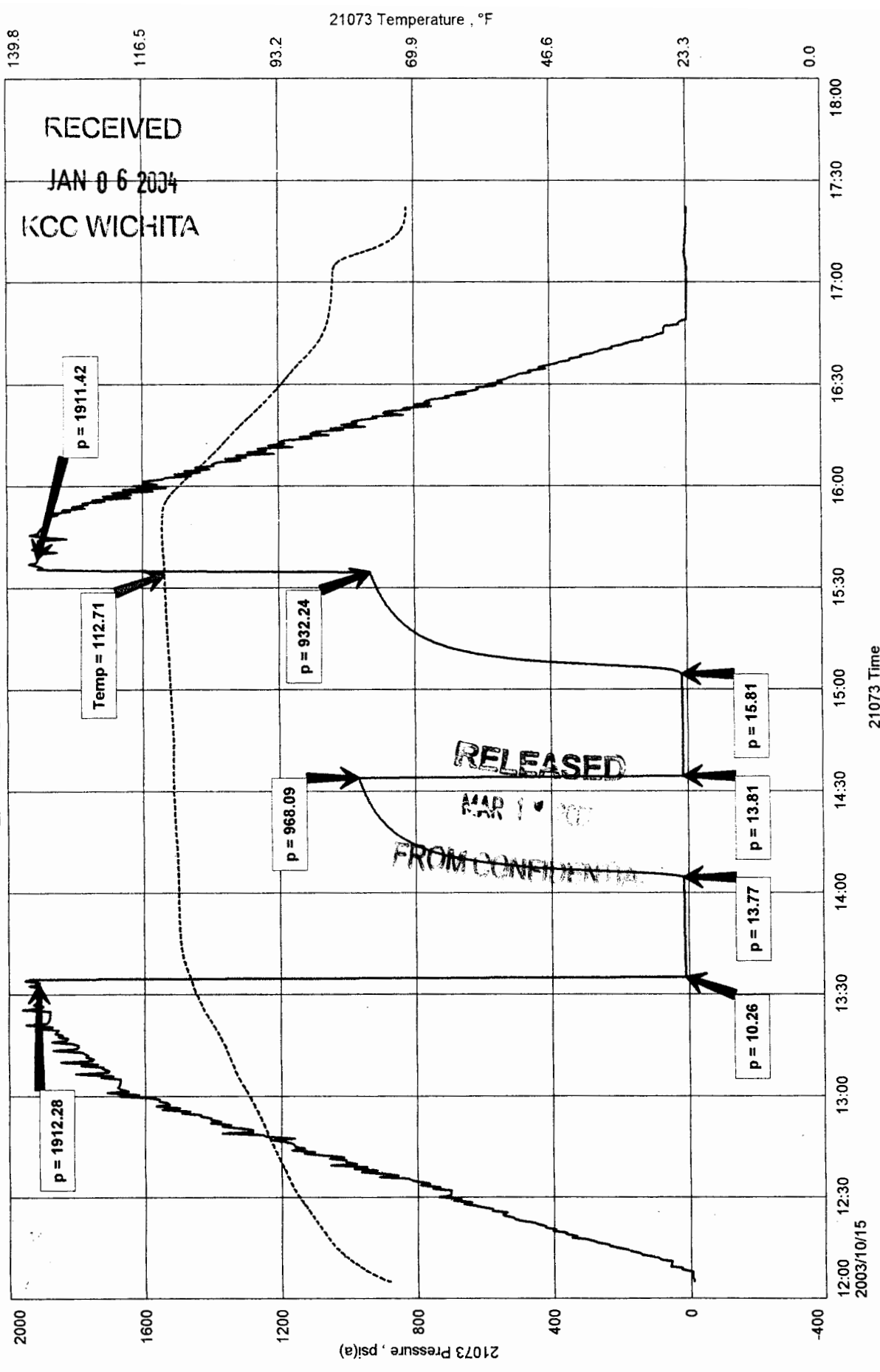
Remarks Pit filtrate triton dish chlorides were 3,000 Ppm.
Recovery filtrate triton dish chlorides were 2,800 Ppm.

RELEASED

MAR

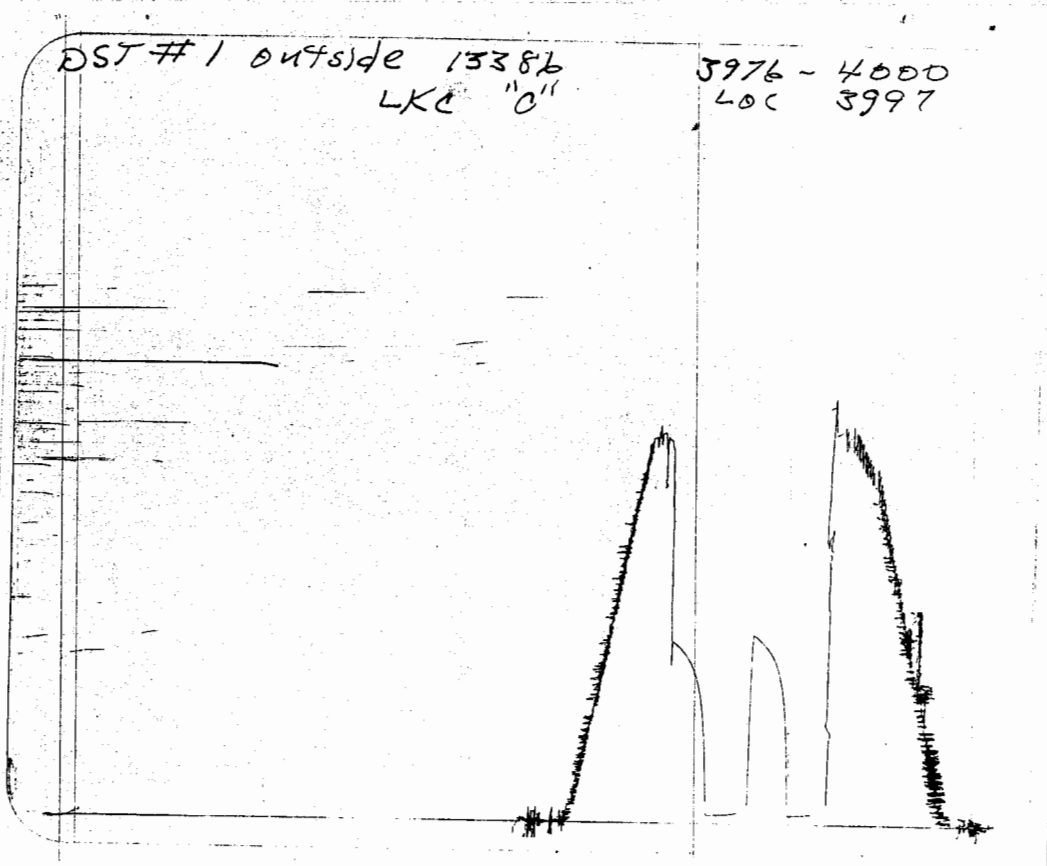
FROM CONFIDENTIAL

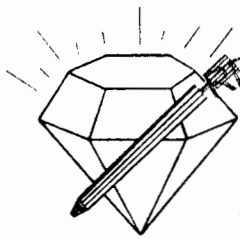
B. BROOKS #1



DST #1 outside 13386
LKC "0"

3976 - 4000
LOC 3997





RECEIVED
JAN 06 2004
KCC WICHITA

DIAMOND TESTING
P.O. Box 157
HOISINGTON, KANSAS 67544
(620) 653-7550 • (800) 542-7313
STC 21076.D81

Company Ritchie Exploration, Inc. Lease & Well No. B. Brooks No. 1

Elevation 2898 KB Formation Lansing/Kansas City ("E"- "F" Zones) Effective Pay -- Ft. Ticket No. 1783

Date 10-16-03 Sec. 6 Twp. 17S Range 30W County Lane State Kansas

Test Approved By Kim B. Shoemaker Diamond Representative Roger D. Friedly

Formation Test No. 2 Interval Tested from 4,030 ft. to 4,055 ft. Total Depth 4,055 ft.

Packer Depth 4,025 ft. Size 6 3/4 in. Packer Depth -- ft. Size -- in.

Packer Depth 4,030 ft. Size 6 3/4 in. Packer Depth -- ft. Size -- in.

Depth of Selective Zone Set ft.

Top Recorder Depth (Inside) 4,018 ft. Recorder Number Elec. Cap. 5,000 psi

Bottom Recorder Depth (Outside) 4,052 ft. Recorder Number 13386 Cap. 4,000 psi

Below Straddle Recorder Depth ft. Recorder Number Cap. psi

Drilling Contractor L. D. Drilling, Inc. - Rig 1 Drill Collar Length -- ft. I.D. -- in.

Mud Type Chemical Viscosity 45 Weight Pipe Length -- ft. I.D. -- in.

Weight 9.2 Water Loss 10.0 cc. Drill Pipe Length 4,005 ft. I.D. 3 1/2 in.

Chlorides 3,200 P.P.M. Test Tool Length 25 ft. Tool Size 3 1/2 - IF in.

Jars: Make Bowen Serial Number Not Run Anchor Length 25 ft. Size 4 1/2 - FH in.

Did Well Flow? No Reversed Out No Surface Choke Size 1 in. Bottom Choke Size 5/8 in.

Main Hole Size 7 7/8 in. Tool Joint Size 4 1/2 - XH in.

Blow: 1st Open: Weak, surface blow increasing to 1 in. No blow back during shut-in.
2nd Open: Weak, surface blow throughout. No blow back during shut-in.

Recovered 5 ft. of drilling mud = .051300 bbls.

Recovered ft. of

Recovered ft. of

Recovered ft. of

Recovered ft. of

Remarks Tool Sample Grind Out: All mud. No show.

Time Set Packer(s) 3:47 ~~PM~~ ^{A.M.} Time Started Off Bottom 5:47 ~~PM~~ ^{A.M.} Maximum Temperature 112°

Initial Hydrostatic Pressure (A) 1958 P.S.I.

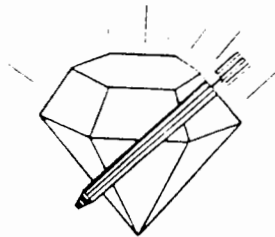
Initial Flow Period Minutes 30 (B) 6 P.S.I. to (C) 12 P.S.I.

Initial Closed In Period Minutes 30 (D) 932 P.S.I.

Final Flow Period Minutes 30 (E) 9 P.S.I. to (F) 10 P.S.I.

Final Closed In Period Minutes 30 (G) 885 P.S.I.

Final Hydrostatic Pressure (H) 1956 P.S.I.



DIAMOND TESTING
P. O. Box 157
HOISINGTON, KANSAS 67544
(800) 542-7313

FLUID SAMPLE DATA

Company Ritchie Exploration, Inc.
Lease & Well No. B. Brooks No. 1
Date 10-16-03 Sec. 6 Twp. 17 S Range 30 W
Formation Test No. 2 Interval Tested From 4,030 ft. to 4,055 ft. Total Depth 4,055 ft.
Formation Lansing/Kansas City ("E"- "F" Zones)

	RECEIVED	<u>MUD PIT</u>	<u>RECOVERY</u>
Viscosity	JAN 05 2004	<u>45</u> CP	<u>42</u> CP
Weight	KCC WICHITA	<u>9.2</u>	<u>9.1</u>
Water Loss		<u>10.0</u> CC	<u>10.0</u> CC
PH Factor		<u>10.5</u>	<u>9.5</u>

	RESISTIVITY	CHLORIDE CONTENT
Recovery Water	<u>-- @ -- °F.</u>	<u>--</u> ppm
Recovery Mud	<u>1.60 @ 64 °F.</u>	<u>4,600</u> ppm
Recovery Mud Filtrate	<u>1.60 @ 66 °F.</u>	<u>4,000</u> ppm
Mud Pit Sample	<u>1.10 @ 66 °F.</u>	<u>5,800</u> ppm
Mud Pit Sample Filtrate	<u>1.20 @ 68 °F.</u>	<u>5,000</u> ppm

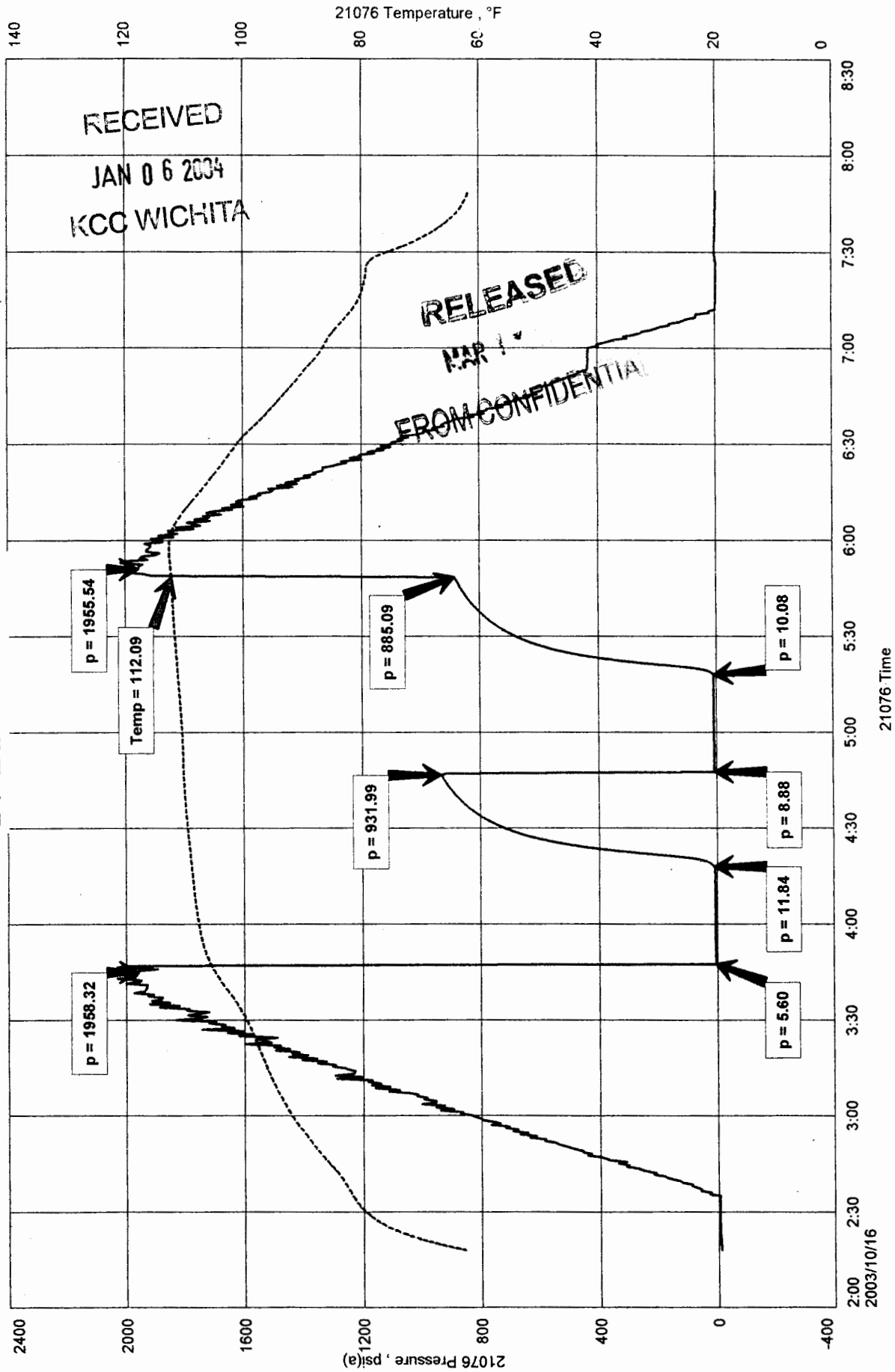
Sample Taken By ROGER D. FRIEDLY
Witness By Kim B. Shoemaker
Remarks Pit filtrate triton dish chlorides 3,200 Ppm.
Recovery filtrate triton dish chlorides were 2,500 Ppm.

RELEASED
FROM CONFIDENTIAL

RITCHIE EXPLORATION, INC.
SEC 6-17S-30W, LANE CO.
Start Test Date: 2003/10/16
Final Test Date: 2003/10/16

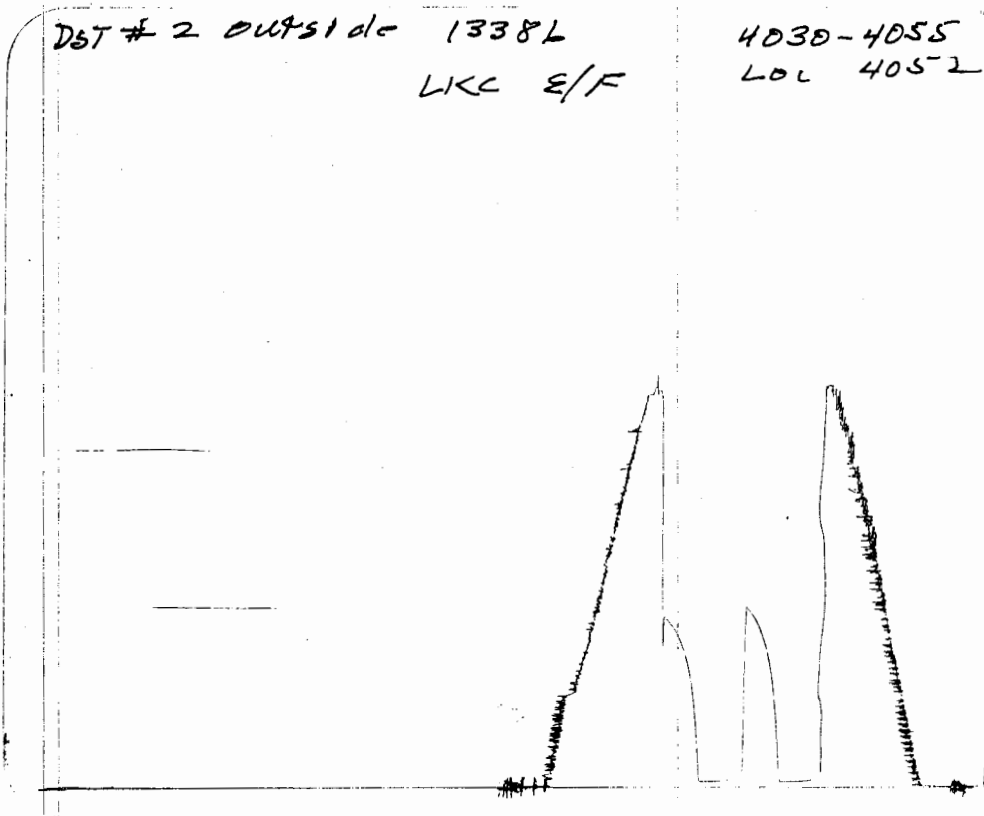
B. BROOKS #1
Formation: DST #2 LKC "E-F" 4030'-4055'

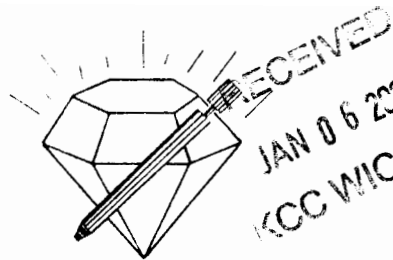
B. BROOKS #1



DST # 2 outside 1338L
LKC E/F

4030-4055
LOL 4052





RECEIVED
JAN 06 2004
KCC WICHITA

DIAMOND TESTING
P.O. Box 157
HOISINGTON, KANSAS 67544
(620) 653-7550 • (800) 542-7313
STC 21076.D82

Company Ritchie Exploration, Inc. Lease & Well No. B. Brooks No. 1
Elevation 2898 KB Formation Lansing/Kansas City ("I"- "J" Zones) Effective Pay 9 Ft. Ticket No. 1784
Date 10-16-03 Sec. 6 Twp. 17S Range 30W County Lane State Kansas

Test Approved By Kim B. Shoemaker Diamond Representative Roger D. Friedly

Formation Test No. 3 Interval Tested from 4,158 ft. to 4,223 ft. Total Depth 4,223 ft.

Packer Depth 4,153 ft. Size 6 3/4 in. Packer Depth -- ft. Size -- in.

Packer Depth 4,158 ft. Size 6 3/4 in. Packer Depth -- ft. Size -- in.

Depth of Selective Zone Set ft.

Top Recorder Depth (Inside) 4,146 ft. Recorder Number Elec. Cap. 5,000 psi

Bottom Recorder Depth (Outside) 4,220 ft. Recorder Number 13386 Cap. 4,000 psi

Below Straddle Recorder Depth ft. Recorder Number Cap. psi

Drilling Contractor L. D. Drilling, Inc. - Rig 1 Drill Collar Length -- ft. I.D. -- in.

Mud Type Chemical Viscosity 48 Weight Pipe Length -- ft. I.D. -- in.

Weight 9.1 Water Loss 10.8 cc. Drill Pipe Length 4,133 ft. I.D. 3 1/2 in.

Chlorides 3,000 P.P.M. Test Tool Length 25 ft. Tool Size 3 1/2 - IF in.

Jars: Make Bowen Serial Number Not Run Anchor Length 34' perf. w/31' drill pipe Size 4 1/2 - FH in.

Did Well Flow? No Reversed Out No Surface Choke Size 1 in. Bottom Choke Size 5/8 in.

Main Hole Size 7 7/8 in. Tool Joint Size 4 1/2 - XH in.

Blow: 1st Open: Fair, 1 in., blow increasing. Off bottom of bucket in 4 1/2 mins. No blow back during shut-in.
2nd Open: Weak, 1/2 in., blow increasing. Off bottom of bucket in 6 1/2 mins. No blow back during shut-in.

Recovered 75 ft. of gas in pipe

Recovered 417 ft of oil & gas cut watery mud = 4.278420 bbls. (Grind out: 6%-oil; 6%-gas; 42%-water; 46%-mud)

Recovered 248 ft. of oil & gas cut muddy water = 2.544480 bbls. (Grind out: 6%-oil; 9%-gas; 16%-mud; 69%-water)

Recovered 310 ft. of oil & mud cut water = 3.180600 bbls. (Grind out: 6%-oil; 4%-mud; 90%-water)

Recovered 186 ft. of salt water with a few oil specks = 1.908360 bbls.

Recovered 1,161 ft. of TOTAL FLUID = 11.911860 bbls.

Remarks Tool Sample Grind Out: 100%-water with oil specks

Time Set Packer(s) 11:55 ^{XXX} P.M. Time Started Off Bottom 2:55 ^{AM} Maximum Temperature 126°

Initial Hydrostatic Pressure (A) 2055 P.S.I.

Initial Flow Period Minutes 30 (B) 26 P.S.I. to (C) 295 P.S.I.

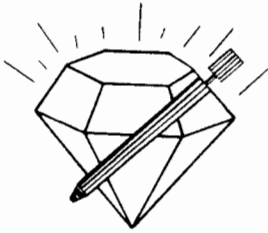
Initial Closed In Period Minutes 45 (D) 996 P.S.I.

Final Flow Period Minutes 45 (E) 290 P.S.I. to (F) 537 P.S.I.

Final Closed In Period Minutes 60 (G) 976 P.S.I.

Final Hydrostatic Pressure (H) 2052 P.S.I.

RELEASED
FROM CONFIDENTIAL



DIAMOND TESTING
 P. O. Box 157
 HOISINGTON, KANSAS 67544
 (800) 542-7313

Page 2 of 5 Pages

FLUID SAMPLE DATA

Company Ritchie Exploration, Inc.

Lease & Well No. B. Brooks No. 1

Date 10-16-03 Sec. 6 Twp. 17 S Range 30 W

Formation Test No. 3 Interval Tested From 4,158 ft. to 4,223 ft. Total Depth 4,223 ft.

Formation Lansing/Kansas City ("I"- "J" Zones)

	<u>MUD PIT</u>	<u>RECOVERY</u>	
Viscosity	<u>48</u> CP	<u>--</u> CP	
Weight	<u>9.1</u>	<u>--</u>	
Water Loss	<u>10.8</u> CC	<u>--</u> CC	
PH Factor	<u>10.0</u>	<u>--</u>	Water <u>6.4</u>

RECEIVED
 JAN 06 2004
 KCC WICHITA

	<u>RESISTIVITY</u>	<u>CHLORIDE CONTENT</u>
Recovery Water	<u>.30 @ 58 °F.</u>	<u>26,000</u> ppm
Recovery Mud	<u>-- @ -- °F.</u>	<u>--</u> ppm
Recovery Mud Filtrate	<u>-- @ -- °F.</u>	<u>--</u> ppm
Mud Pit Sample	<u>1.10 @ 67 °F.</u>	<u>5,600</u> ppm
Mud Pit Sample Filtrate	<u>1.20 @ 68 °F.</u>	<u>5,000</u> ppm

Sample Taken By ROGER D. FRIEDLY

Witness By Kim B. Shoemaker

Remarks Pit filtrate triton dish chlorides were 3,000 Ppm.
Recovery water dish chlorides were 22,500 Ppm.

RELEASED
 MAR 2
 FROM CONFIDENTIAL

RECEIVED
 JAN 06 2004
 KCC WICHITA

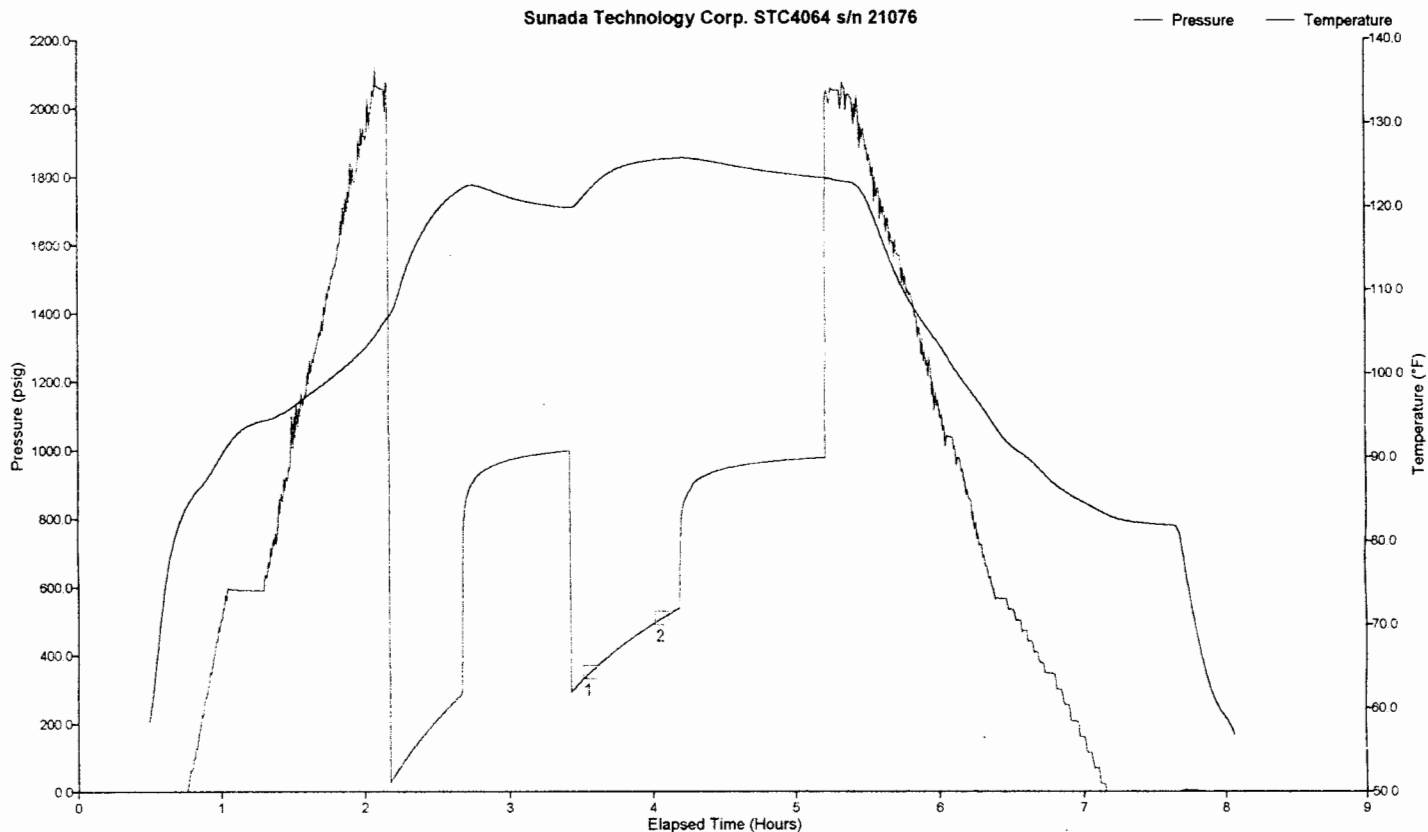
RITCHIE EXPLORATION, INC.

<u>NUMBER OF FEET</u>	<u>GAS</u>	<u>OIL</u>	<u>WATER</u>	<u>MUD</u>	<u>EMULSION</u>	<u>TOTAL PERCENTAGE</u>
45	8	8	39	45	0	100
62	4	6	40	50	0	100
62	4	6	45	45	0	100
62	5	6	44	45	0	100
124	8	5	42	45	0	100
62	6	6	48	40	0	100
124	11	6	60	23	0	100
124	6	6	78	10	0	100
310	0	6	90	4	0	100
186	0 SPECKS		100	0	0	100
						0
						0

1161 TOTAL

RELEASED
 MAR 17 2006
 FROM CONFIDENTIAL

Well DST: DST #3 LKC "I/J" 4158'4223'
 Well Name: B BROOKS #1
 Company: RITCHIE EXPLORATION, INC.
 Battery on: Oct 16, 2003 at 21:44:00
 Notes:



RECEIVED
 JAN 06 2004
 KCC WICHITA

RELEASED
 MAR 1
 FROM CONFIDENTIAL

Tag	Pressure	Temperature	Comment
1	348.39 psig	121.92 °F	2003-10-17 01:18:00
2	506.89 psig	125.60 °F	2003-10-17 01:48:00

RITCHIE EXPLORATION, INC.

DESCRIPTION	SECOND READING	507	FIRST READING	348	PRESSURE CHANGE	159	PIPE SIZE	0.0142	FLUID GRADIENT	0.3595	TIME CHANGE	30	TOTAL TIME	1440	DAILY PRODUCTION	301.4586926	AVERAGE % OIL	0.06	ESTIMATED PRODUCTION	18.088
FINAL FLOW PERIOD																				

RECEIVED
 JAN 06 2004
 KCC WICHITA

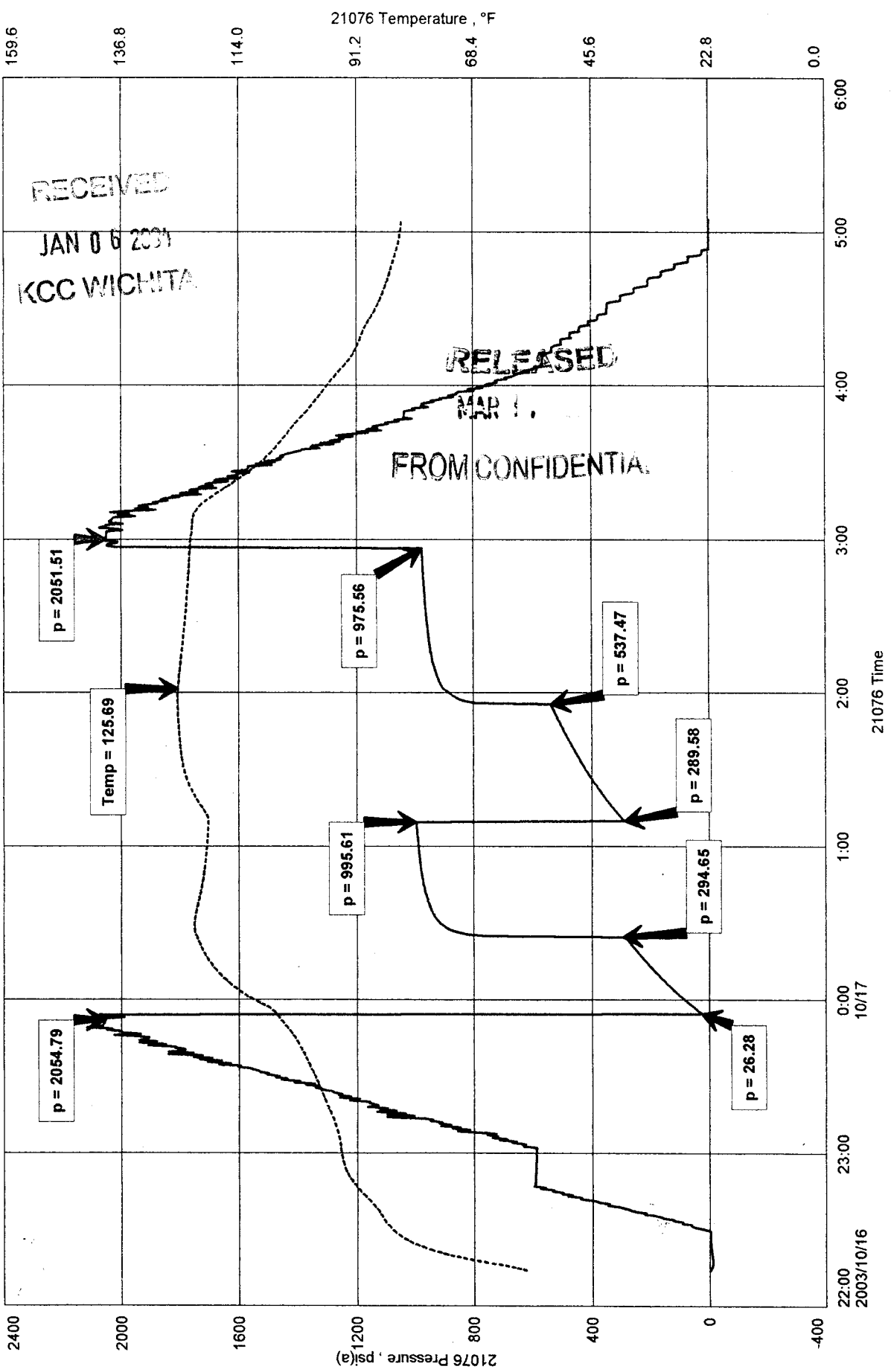
RELEASED
 FROM CONFIDENTIAL

B. BROOKS #1 DST #3 LKC "I/J" 4158'-4223'

RITCHIE EXPLORATION, INC.
SEC 6-17S-30W
Start Test Date: 2003/10/16
Final Test Date: 2003/10/17

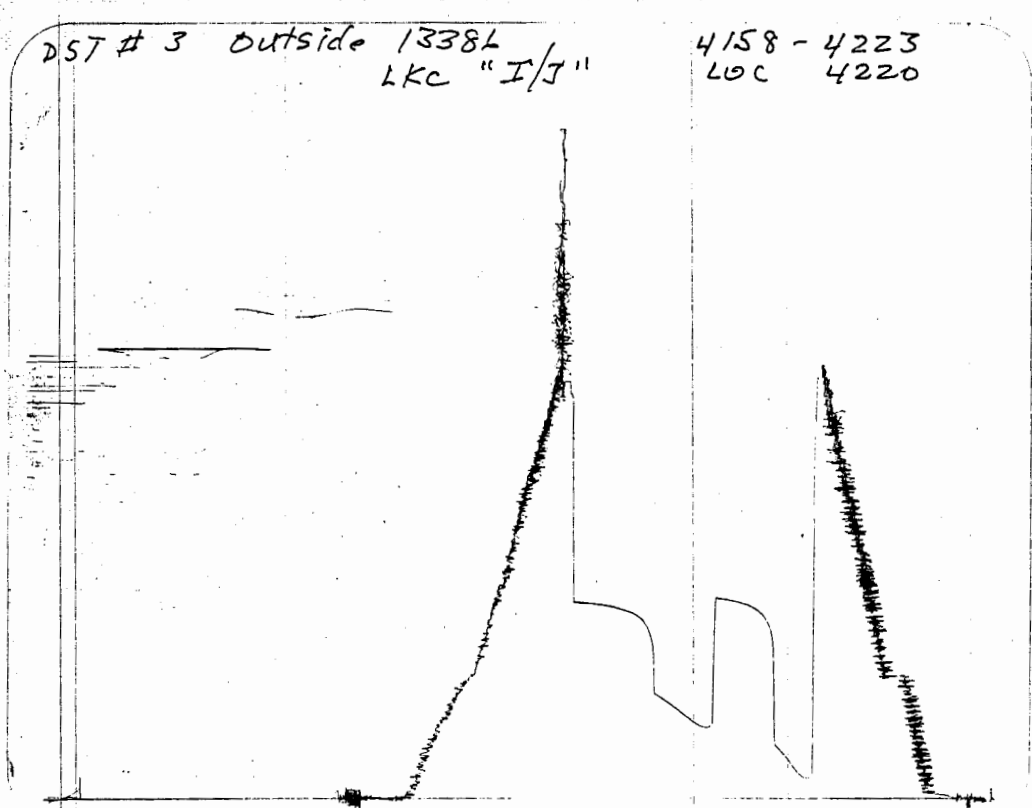
B. BROOKS #1
Formation: DST #3 LKC "I/J" 4158'-4223'

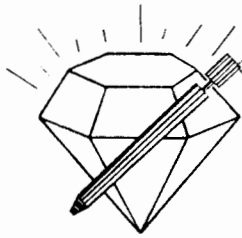
B. BROOKS #1



DST # 3 Outside 1338L
LKC "I/J"

4158 - 4223
LOC 4220





RECEIVED
JAN 06 2004
KCC WICHITA

DIAMOND TESTING
P.O. Box 157
HOISINGTON, KANSAS 67544
(620) 653-7550 • (800) 542-7313
STC 21076.D83

Company Ritchie Exploration, Inc. Lease & Well No. B. Brooks No. 1
Elevation 2898 KB Formation Lansing/Kansas City "L"/Pleasanton Effective Pay -- Ft. Ticket No. 1785
Date 10-17-03 Sec. 6 Twp. 17S Range 30W County Lane State Kansas

Test Approved By Kim B. Shoemaker Diamond Representative Roger D. Friedly

Formation Test No. 4 Interval Tested from 4,258 ft. to 4,317 ft. Total Depth 4,317 ft.

Packer Depth 4,253 ft. Size 6 3/4 in. Packer Depth -- ft. Size -- in.

Packer Depth 4,258 ft. Size 6 3/4 in. Packer Depth -- ft. Size -- in.

Depth of Selective Zone Set ft.

Top Recorder Depth (Inside) 4,246 ft. Recorder Number Elec. Cap. 5,000 psi

Bottom Recorder Depth (Outside) 4,314 ft. Recorder Number 13386 Cap. 4,000 psi

Below Straddle Recorder Depth ft. Recorder Number Cap. psi

Drilling Contractor L. D. Drilling, Inc. - Rig 1 Drill Collar Length -- ft. I.D. -- in.

Mud Type Chemical Viscosity 46 Weight Pipe Length -- ft. I.D. -- in.

Weight 9.5 Water Loss 10.0 cc. Drill Pipe Length 4,233 ft. I.D. 3 1/2 in.

Chlorides 2,600 P.P.M. Test Tool Length 25 ft. Tool Size 3 1/2 - IF in.

Jars: Make Bowen Serial Number Not Run Anchor Length 28' perf. w/31' drill pipe Size 4 1/2 - FH in.

Did Well Flow? No Reversed Out No Surface Choke Size 1 in. Bottom Choke Size 5/8 in.

Main Hole Size 7 7/8 in. Tool Joint Size 4 1/2 - XH in.

Blow: 1st Open: Weak, surface blow increasing to 3 1/2 ins. No blow back during shut-in.
2nd Open: Weak, surface blow increasing to 2 ins. No blow back during shut-in.

Recovered 15 ft. of slightly oil cut watery mud = .153900 bbls. (Grind out: 1%-oil; 97%-water; 97%-mud)

Recovered 62 ft. of watery mud = .636120 bbls. (Grind out: 40%-water; 60%-mud with a trace oil)

Recovered 77 ft. of TOTAL FLUID = .790020 bbls.

Recovered ft. of

Recovered ft. of

Remarks Tool Sample Grind Out: 50%-water; 50%-mud with a trace of oil

Time Set Packer(s) 6:35 ~~XXM.~~ P.M. Time Started Off Bottom 9:35 ~~XXM.~~ P.M. Maximum Temperature 117°

Initial Hydrostatic Pressure 2081 P.S.I. (A)

Initial Flow Period 30 Minutes (B) 8 P.S.I. to (C) 29 P.S.I.

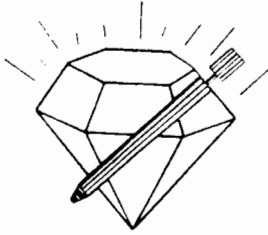
Initial Closed In Period 45 Minutes (D) 1001 P.S.I.

Final Flow Period 45 Minutes (E) 28 P.S.I. to (F) 45 P.S.I.

Final Closed In Period 60 Minutes (G) 953 P.S.I.

Final Hydrostatic Pressure 2088 P.S.I. (H)

RELEASED
FROM CONFIDENTIAL



DIAMOND TESTING
P. O. Box 157
HOISINGTON, KANSAS 67544
(800) 542-7313

FLUID SAMPLE DATA

Company Ritchie Exploration, Inc.

Lease & Well No. B. Brooks No. 1

Date 10-17-03 Sec. 6 Twp. 17 S Range 30 W

Formation Test No. 4 Interval Tested From 4,258 ft. to 4,317 ft. Total Depth 4,317 ft.

Formation Lansing/Kansas City "L"/Pleasanton

	<u>MUD PIT</u>	<u>RECOVERY</u>	
Viscosity	<u>46</u> CP	<u>39</u> CP	
Weight	<u>9.5</u>	<u>9.0</u>	
Water Loss	<u>10.0</u> CC	<u>14.0</u> CC	
PH Factor	<u>8.0</u>	<u>7.5</u>	Water <u>6.2</u>

RECEIVED
JAN 06 2004
KCC WICHITA

	<u>RESISTIVITY</u>	<u>CHLORIDE CONTENT</u>
Recovery Water	<u>.46 @ 66 °F.</u>	<u>15,200 ppm</u>
Recovery Mud	<u>.72 @ 64 °F.</u>	<u>10,000 ppm</u>
Recovery Mud Filtrate	<u>.76 @ 66 °F.</u>	<u>9,200 ppm</u>
Mud Pit Sample	<u>1.30 @ 81 °F.</u>	<u>4,300 ppm</u>
Mud Pit Sample Filtrate	<u>1.30 @ 83 °F.</u>	<u>4,000 ppm</u>

RELEASED
MAR 1 2004
FROM CONFIDENTIAL

Sample Taken By ROGER D. FRIEDLY

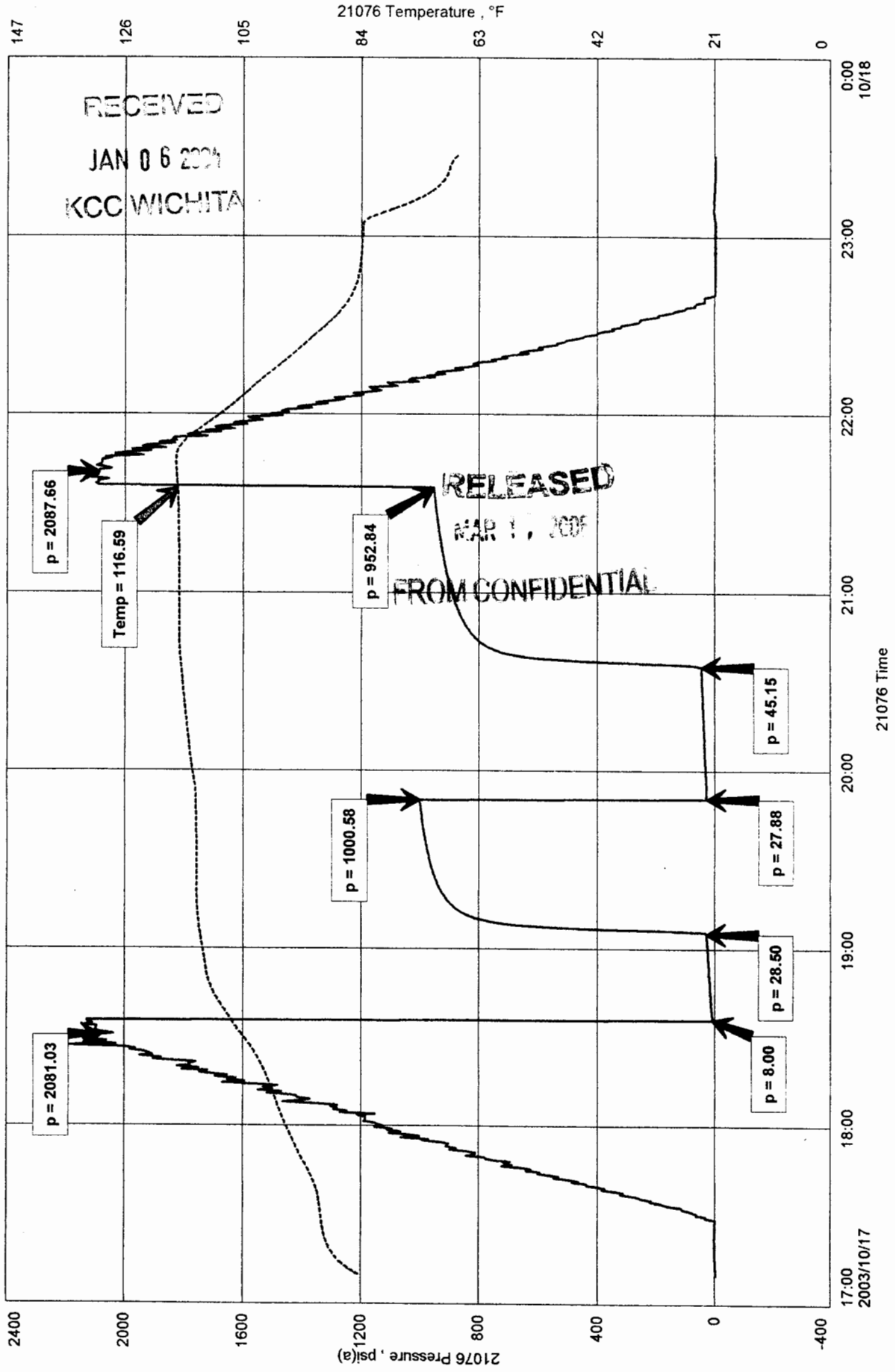
Witness By Kim B. Shoemaker

Remarks Pit filtrate triton dish chlorides were 2,600 Ppm.
Recovery filtrate triton dish chlorides were 8,200 Ppm.
Recovery water dish chlorides were 11,200 Ppm.

RITCHIE EXPLORATION, INC
SEC 6-17S-30W
Start Test Date: 2003/10/17
Final Test Date: 2003/10/17

B. BROOKS #1
Formation: DST #4 LKC "L"/PLEAS. 4258'-4317'

B. BROOKS #1

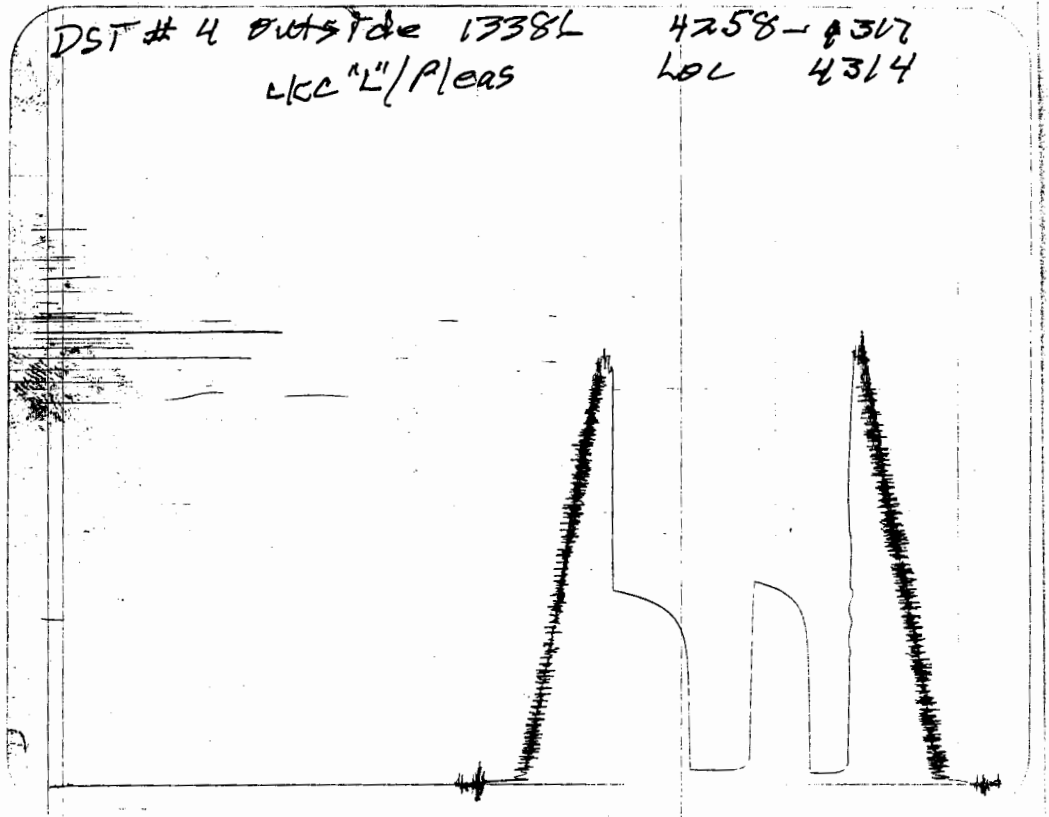


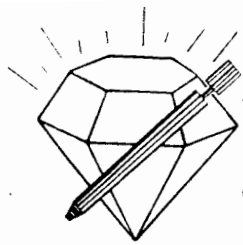
RECEIVED
JAN 06 2004
KCC WICHITA

RELEASED
MAR 1, 2004
FROM CONFIDENTIAL

DST # 4 outside 1338L
LKC "L" / Pleas

4258-8307
L0L 4314





RECEIVED
JAN 06 2004
KCC WICHITA

DIAMOND TESTING
P.O. Box 157
HOISINGTON, KANSAS 67544
(620) 653-7550 • (800) 542-7313
STC 21076.D84

Company Ritchie Exploration, Inc. Lease & Well No. B. Brooks No. 1

Elevation 2898 KB Formation Marmaton/Fort Scott Effective Pay -- Ft. Ticket No. 1786

Date 10-18-03 Sec. 6 Twp. 17S Range 30W County Lane State Kansas

Test Approved By Kim B. Shoemaker Diamond Representative Roger D. Friedly

Formation Test No. 5 Interval Tested from 4,313 ft. to 4,480 ft. Total Depth 4,480 ft.

Packer Depth 4,308 ft. Size 6 3/4 in. Packer Depth -- ft. Size -- in.

Packer Depth 4,313 ft. Size 6 3/4 in. Packer Depth -- ft. Size -- in.

Depth of Selective Zone Set ft.

Top Recorder Depth (Inside) 4,301 ft. Recorder Number Elec. Cap. 5,000 psi

Bottom Recorder Depth (Outside) 4,477 ft. Recorder Number 13386 Cap. 4,000 psi

Below Straddle Recorder Depth ft. Recorder Number Cap. psi

Drilling Contractor L. D. Drilling, Inc. - Rig 1 Drill Collar Length -- ft. I.D. -- in.

Mud Type Chemical Viscosity 43 Weight Pipe Length -- ft. I.D. -- in.

Weight 9.4 Water Loss 8.8 cc. Drill Pipe Length 4,288 ft. I.D. 3 1/2 in.

Chlorides 2,500 P.P.M. Test Tool Length 25 ft. Tool Size 3 1/2 - IF in.

Wires Make Bowen Serial Number Not Run Anchor Length 42' perf. w/125' drill pipe Size 4 1/2 - FH in.

Did Well Flow? No Reversed Out No Surface Choke Size 1 in. Bottom Choke Size 5/8 in.

Main Hole Size 7 7/8 in. Tool Joint Size 4 1/2 - XH in.

Blow: 1st Open: Weak, 3/4 in., blow decreasing to a weak, surface blow. No blow back during shut-in.

2nd Open: No blow.

covered 10 ft. of drilling mud with a few oil specks in tool = .102600 bbls

covered ft. of

covered ft. of

covered ft. of

covered ft. of

Remarks Tool Sample Grind Out: 100%-drilling mud with a few oil specks

Time Set Packer(s) 9:00 P.M. Time Started Off Bottom 11:00 P.M. Maximum Temperature 115°

Initial Hydrostatic Pressure (A) 2127 P.S.I.

Initial Flow Period Minutes 30 (B) 8 P.S.I. to (C) 13 P.S.I.

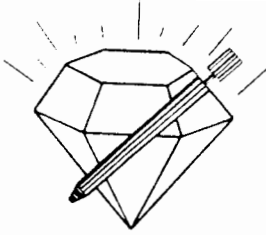
Initial Closed In Period Minutes 30 (D) 176 P.S.I.

Final Flow Period Minutes 30 (E) 13 P.S.I. to (F) 14 P.S.I.

Final Closed In Period Minutes 30 (G) 53 P.S.I.

Final Hydrostatic Pressure (H) 2127 P.S.I.

RELEASED
FROM CONFIDENTIAL



DIAMOND TESTING
P. O. Box 157
HOISINGTON, KANSAS 67544
(800) 542-7313

FLUID SAMPLE DATA

Company Ritchie Exploration, Inc.
Lease & Well No. B. Brooks No. 1
Date 10-18-03 Sec. 6 Twp. 17 S Range 30 W
Formation Test No. 5 Interval Tested From 4,313 ft. to 4,480 ft. Total Depth 4,480 ft.
Formation Marmaton/Fort Scott

		<u>MUD PIT</u>	<u>RECOVERY</u>
Viscosity	RECEIVED	<u>43</u> CP	<u>45</u> CP
Weight	JAN 06 2004	<u>9.4</u>	<u>9.3</u>
Water Loss	KCC WICHITA	<u>8.8</u> CC	<u>9.2</u> CC
PH Factor		<u>10.0</u>	<u>10.5</u>

	<u>RESISTIVITY</u>	<u>CHLORIDE CONTENT</u>
Recovery Water	<u>-- @ -- °F.</u>	<u>--</u> ppm
Recovery Mud	<u>1.20 @ 68 °F.</u>	<u>5,300</u> ppm
Recovery Mud Filtrate	<u>1.30 @ 70 °F.</u>	<u>4,900</u> ppm
Mud Pit Sample	<u>1.40 @ 70 °F.</u>	<u>4,300</u> ppm
Mud Pit Sample Filtrate	<u>1.50 @ 72 °F.</u>	<u>4,000</u> ppm

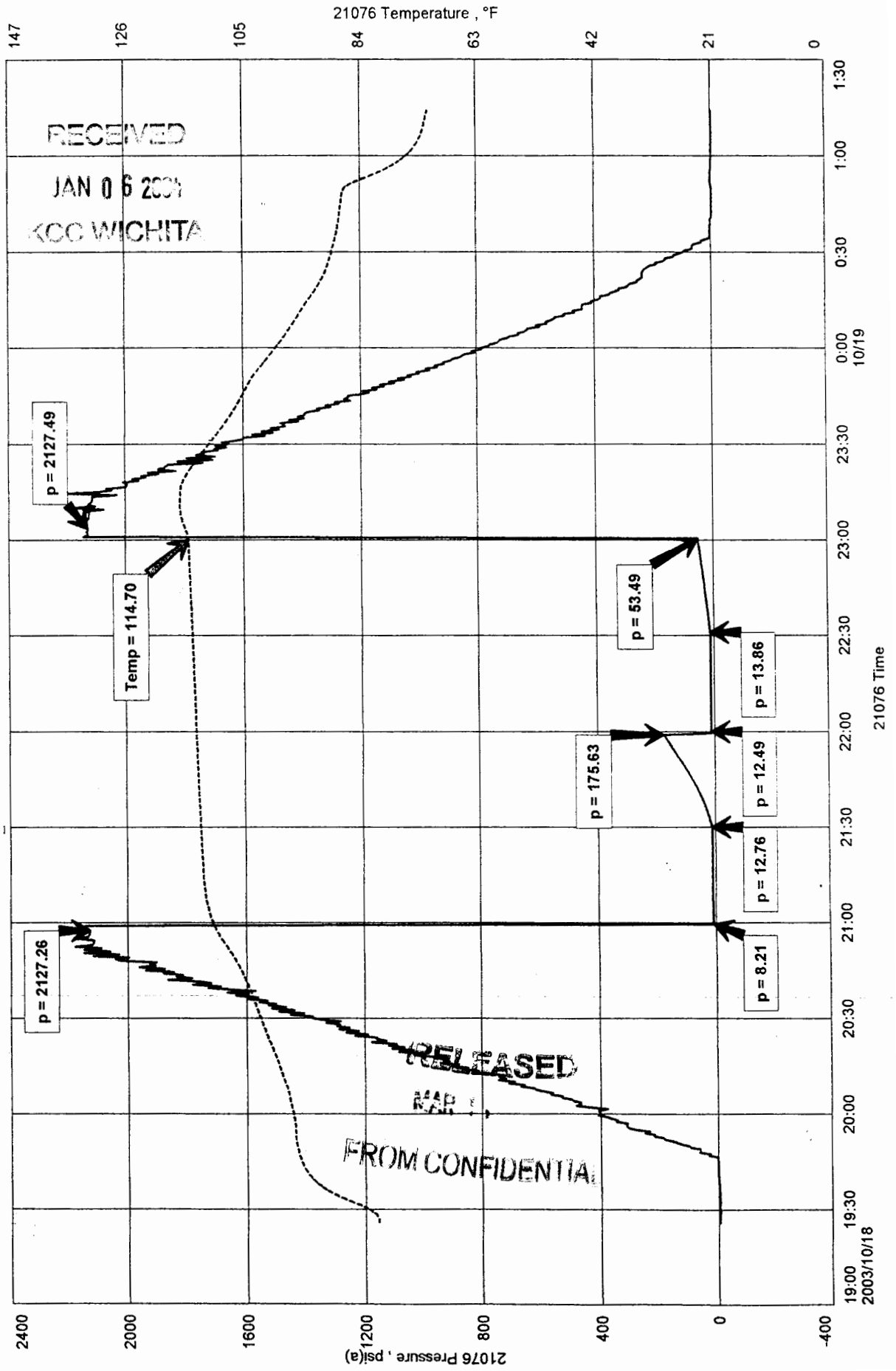
RELEASED
FROM CONFIDENTIAL

Sample Taken By ROGER D. FRIEDLY
Witness By Kim B. Shoemaker
Remarks Pit filtrate triton dish chlorides were 2,500 Ppm.
Recovery filtrate triton dish chlorides were 3,000 Ppm.

RITCHIE EXPLORATION, INC.
SEC 6-17S-30W LANE, CO.
Start Test Date: 2003/10/18
Final Test Date: 2003/10/19

B. BROOKS #1
Formation: DST #5 MARM/FT SCOTT 4313-4480'

B. BROOKS #1

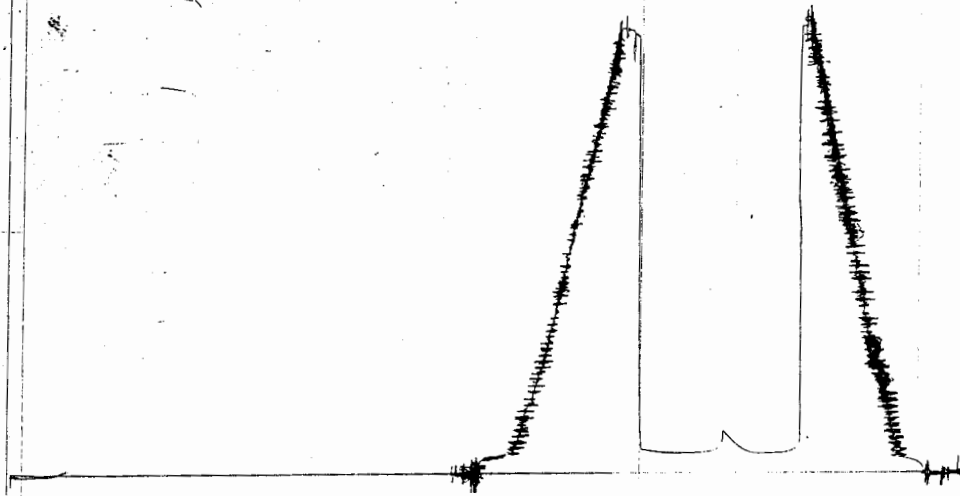


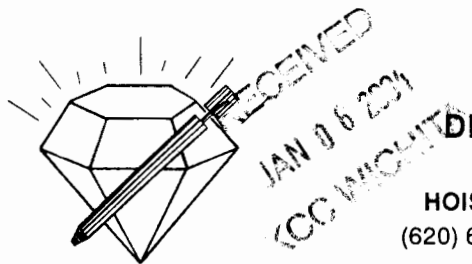
DST # 5 outside 13386

#313-4480

farm/FT SCOTT

LOC 4427





DIAMOND TESTING

P.O. Box 157
HOISINGTON, KANSAS 67544
(620) 653-7550 • (800) 542-7313
STC 21076.D85

Company Ritchie Exploration, Inc. Lease & Well No. B. Brooks No. 1

Elevation 2898 KB Formation Cherokee/Johnson Effective Pay -- Ft. Ticket No. 1787

Date 10-19-03 Sec. 6 Twp. 17S Range 30W County Lane State Kansas

Test Approved By Kim B. Shoemaker Diamond Representative Roger D. Friedly

Formation Test No. 6 Interval Tested from 4,482 ft. to 4,550 ft. Total Depth 4,550 ft.

Packer Depth 4,477 ft. Size 6 3/4 in. Packer Depth -- ft. Size -- in.

Packer Depth 4,482 ft. Size 6 3/4 in. Packer Depth -- ft. Size -- in.

Depth of Selective Zone Set ft.

Top Recorder Depth (Inside) 4,470 ft. Recorder Number Elec. Cap. 5,000 psi

Bottom Recorder Depth (Outside) 4,547 ft. Recorder Number 13386 Cap. 4,000 psi

Below Straddle Recorder Depth ft. Recorder Number Cap. psi

Drilling Contractor L. D. Drilling, Inc. - Rig 1 Drill Collar Length -- ft. I.D. -- in.

Mud Type Chemical Viscosity 44 Weight Pipe Length -- ft. I.D. -- in.

Weight 9.3 Water Loss 10.8 cc. Drill Pipe Length 4,457 ft. I.D. 3 1/2 in.

Chlorides 4,000 P.P.M. Test Tool Length 25 ft. Tool Size 3 1/2 - IF in.

Jars: Make Bowen Serial Number Not Run Anchor Length 37' perf. w/31' drill pipe Size 4 1/2 - FH in.

Did Well Flow? No Reversed Out No Surface Choke Size 1 in. Bottom Choke Size 5/8 in.

Main Hole Size 7 7/8 in. Tool Joint Size 4 1/2 - XH in.

Blow: 1st Open: Weak, surface blow increasing to 1 in. No blow back during shut-in.

2nd Open: Weak, surface blow increasing to 1/2 in. No blow back during shut-in.

Recovered 20 ft. of slightly oil cut mud = .205200 bbls. (Grind out: 2%-oil; 98%-mud)

Recovered ft. of

Recovered ft. of

Recovered ft. of

Recovered ft. of

Remarks Tool Sample Grind Out: 4%-oil; 96%-mud

RELEASED
MAR 17 2006
FROM CONFIDENTIAL

Time Set Packer(s) 2:03 P.M. Time Started Off Bottom 4:03 P.M. Maximum Temperature 115°

Initial Hydrostatic Pressure 2185 P.S.I. (A)

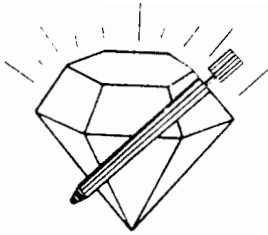
Initial Flow Period 30 Minutes (B) 7 P.S.I. to (C) 13 P.S.I.

Initial Closed In Period 30 Minutes (D) 1000 P.S.I.

Final Flow Period 30 Minutes (E) 13 P.S.I. to (F) 20 P.S.I.

Final Closed In Period 30 Minutes (G) 944 P.S.I.

Final Hydrostatic Pressure 2178 P.S.I. (H)



DIAMOND TESTING
P. O. Box 157
HOISINGTON, KANSAS 67544
(800) 542-7313

FLUID SAMPLE DATA

Company Ritchie Exploration, Inc.

Lease & Well No. B. Brooks No. 1

Date 10-19-03 Sec. 6 Twp. 17 S Range 30 W

Formation Test No. 6 Interval Tested From 4,482 ft. to 4,550 ft. Total Depth 4,550 ft.

Formation Cherokee/Johnson

RECEIVED
JAN 06 2004
CCC WICHITA

	<u>MUD PIT</u>	<u>RECOVERY</u>
Viscosity	<u>44</u> CP	<u>46</u> CP
Weight	<u>9.3</u>	<u>9.2</u>
Water Loss	<u>10.8</u> CC	<u>10.4</u> CC
PH Factor	<u>10.5</u>	<u>10.0</u>

	<u>RESISTIVITY</u>	<u>CHLORIDE CONTENT</u>
Recovery Water	<u>-- @ -- °F.</u>	<u>--</u> ppm
Recovery Mud	<u>.96 @ 79 °F.</u>	<u>5,800</u> ppm
Recovery Mud Filtrate	<u>1.00 @ 82 °F.</u>	<u>5,100</u> ppm
Mud Pit Sample	<u>.85 @ 88 °F.</u>	<u>6,000</u> ppm
Mud Pit Sample Filtrate	<u>.90 @ 92 °F.</u>	<u>5,200</u>

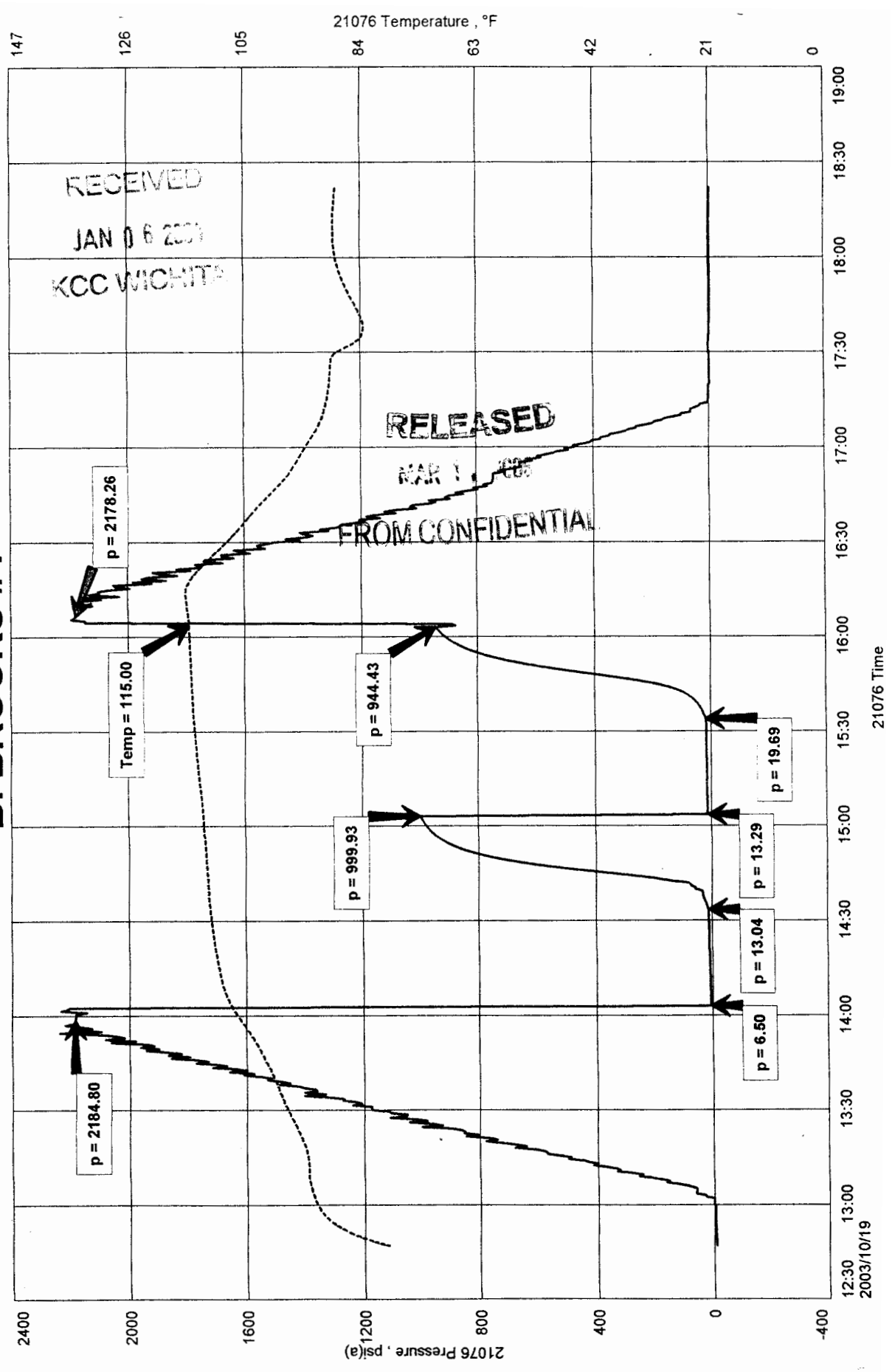
RELEASED
MAR 11
FROM CONFIDENTIAL

Sample Taken By ROGER D. FRIEDLY

Witness By Kim B. Shoemaker

Remarks Pit filtrate triton dish chlorides were 4,000 Ppm.
Recovery filtrate triton dish chlorides were 3,800 Ppm.

B. BROOKS #1



DST # 6 outside 13382

Chero/John

4482-4580

LOC 4547

