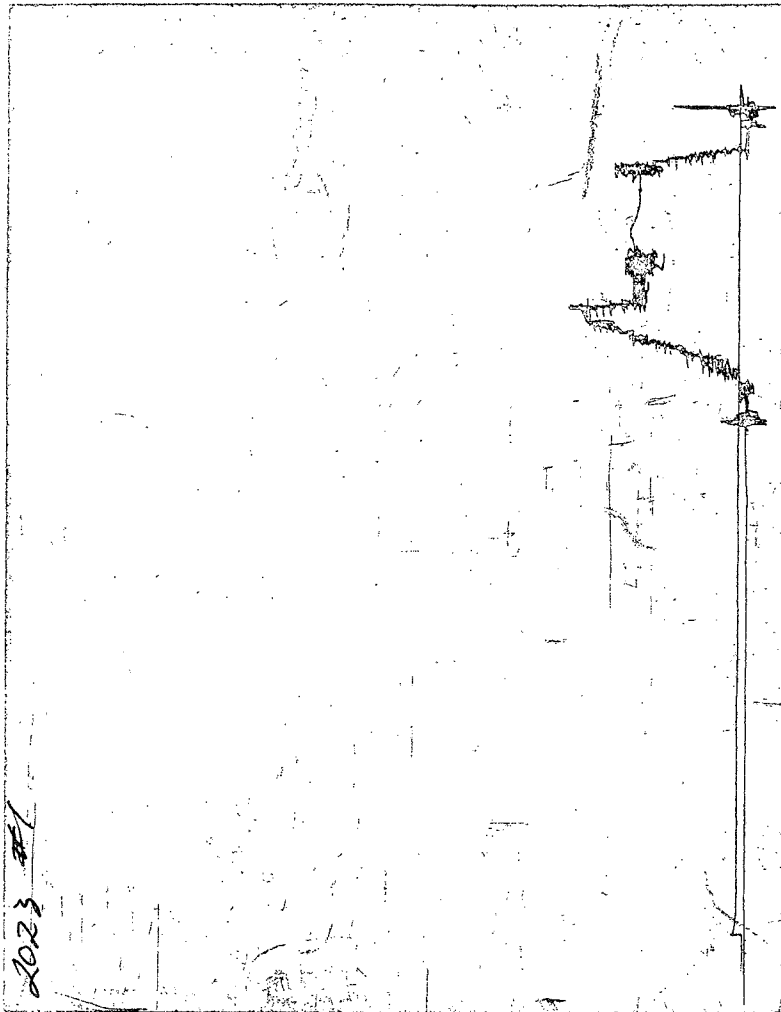




**CHART PAGE**

This is a photocopy of the actual AK-1 recorder chart



RECEIVED

AUG - 9 2001

KCC WICHITA

# TRILOBITE TESTING L.L.C.

P.O. Box 362 • Hays, Kansas 67601

Nº 13743

## Test Ticket

Well Name & No. Glean #2 Test No. #1 Date 7-21-01  
 Company McRae & Henry Ltd Zone Tested KC  
 Address 580 Anderson Bay Centre Blvd Denver, CO Elevation 2863 KB 2855 GL  
 Co. Rep / Geo. Wes Lilley Cont. Discovery Est. Ft. of Pay      Por.      %  
 Location: Sec. 34 Twp. 17 Rge. 30 Co. Garfield State KS  
 No. of Copies Norm Distribution Sheet (Y, N)      Turnkey (Y, N)      Evaluation (Y, N)     

Interval Tested 4002 4052 Initial Str Wt./Lbs. 24000 Unseated Str Wt./Lbs.       
 Anchor Length      50 Wt. Set Lbs.      Wt. Pulled Loose/Lbs.       
 Top Packer Depth      3997 Tool Weight 1500  
 Bottom Packer Depth      4002 Hole Size — 7 7/8" ✓ Rubber Size — 6 3/4" ✓  
 Total Depth      4052 Wt. Pipe Run      Drill Collar Run       
 Mud Wt. 9.1 LCM Tr Vis. 48 WL 8.0 Drill Pipe Size 4 1/2 XH Ft. Run       
 Blow Description Ran tool in hole, hit bridge @ 1715-1730' tried to work thru, would not go. pull tool to run BIT

Recovery — Total Feet	GIP	Ft. in DC	Ft. in DP	%gas	%oil	%water	%mud
Rec. <u>    </u> Feet Of <u>    </u>							
Rec. <u>    </u> Feet Of <u>    </u>							
Rec. <u>    </u> Feet Of <u>    </u>							
Rec. <u>    </u> Feet Of <u>    </u>							
Rec. <u>    </u> Feet Of <u>    </u>							

BHT      °F Gravity      °API D@      °F Corrected Gravity      °API  
 RW      @      °F Chlorides      ppm Recovery Chlorides 500 ppm System

	AK-1	Alpine	PSI Recorder No.	T-On Location
(A) Initial Hydrostatic Mud			<u>11057</u>	<u>20:25 p.m.</u>
(B) First Initial Flow Pressure			<u>4004'</u>	<u>21:30 p.m.</u>
(C) First Final Flow Pressure			<u>2023</u>	<u>    </u>
(D) Initial Shut-In Pressure			<u>4047'</u>	<u>22:30 p.m.</u>
(E) Second Initial Flow Pressure			<u>    </u>	<u>23:40 p.m.</u>
(F) Second Final Flow Pressure			<u>    </u>	<u>12:20 a.m.</u>
(G) Final Shut-in Pressure			<u>    </u>	<u>    </u>
(Q) Final Hydrostatic Mud			<u>    </u>	<u>    </u>

Final Flow      Safety Joint X  
 Final Shut-in      Straddle       
 Circ. Sub X N/C  
 Sampler       
 Extra Packer       
 Elec. Rec.       
 Mileage 20 way  
 Other       
 TOTAL PRICE \$     

TRILOBITE TESTING L.L.C. SHALL NOT BE LIABLE FOR DAMAGE OF ANY KIND OF THE PROPERTY OR PERSONNEL OF THE ONE FOR WHOM A TEST IS MADE, OR FOR ANY LOSS SUFFERED OR SUSTAINED, DIRECTLY OR INDIRECTLY, THROUGH THE USE OF ITS EQUIPMENT, OR ITS STATEMENTS OR OPINION CONCERNING THE RESULTS OF ANY TEST. TOOLS LOST OR DAMAGED IN THE HOLE SHALL BE PAID FOR AT COST BY THE PARTY FOR WHOM THE TEST IS MADE.

Approved By       
 Our Representative     

RECEIVED  
 AUG - 9 2001  
 KCC WICHITA

TRILOBITE TESTING L.L.C.

OPERATOR : McRae & Henry LTD

DATE 7-22-01

WELL NAME: Glenn #2

KB 2863.00 ft

TICKET NO: 13744 DST #2

LOCATION : 34-17-30 Lane co KS

GR 2855.00 ft

FORMATION: KC

INTERVAL : 4002.00 To 4052.00 ft

TD 4052.00 ft

TEST TYPE: CONVENTIONAL

RECORDER DATA

Mins		Field	1	2	3	4	TIME DATA-----
PF 30	Rec.	11057	11057				PF Fr. 0955 to 1025 hr
SI 30	Range(Psi )	4500.0	4500.0	0.0	0.0	0.0	IS Fr. 1025 to 1055 hr
SF 60	Clock(hrs)	12	12				SF Fr. 1055 to 1155 hr
FS 60	Depth(ft )	4004.0	4004.0	0.0	0.0	0.0	FS Fr. 1155 to 1255 hr

	Field	1	2	3	4	
A. Init Hydro	1948.0	1912.0	0.0	0.0	0.0	T STARTED 0830 hr
B. First Flow	145.0	150.0	0.0	0.0	0.0	T ON BOTM 0950 hr
B1. Final Flow	179.0	164.0	0.0	0.0	0.0	T OPEN 0955 hr
C. In Shut-in	1085.0	1076.0	0.0	0.0	0.0	T PULLED 1255 hr
D. Init Flow	201.0	207.0	0.0	0.0	0.0	T OUT 1430 hr
E. Final Flow	257.0	250.0	0.0	0.0	0.0	

	Field	1	2	3	4	
F. Fl Shut-in	1051.0	1041.0	0.0	0.0	0.0	TOOL DATA-----
G. Final Hydro	1937.0	1946.0	0.0	0.0	0.0	Tool Wt. 1500.00 lbs
Inside/Outside	I	I				Wt Set On Packer 30000.00 lbs

RECOVERY							
Tot Fluid	450.00 ft of	0.00 ft in DC and	450.00 ft in DP	Unseated Str Wt	43000.00 lbs	Bot Choke	0.75 in
150.00	ft of Water cut mud			Hole Size	7.78 in	D Col. ID	2.25 in
0.00	ft of 30% water 70% mud			D. Pipe ID	3.80 in	D.C. Length	0.00 ft
300.00	ft of Mud cut water			D.P. Length	4037.00 ft		
0.00	ft of 80%water 20% mud						
0.00	ft of						
0.00	ft of						
0.00	ft of						
0.00	ft of						

SALINITY 26500.00 P.P.M. A.P.I. Gravity 0.00

BLOW DESCRIPTION

Initial Flow:  
 1" @ open built to 9 1/2".  
 Initial Shut-In:  
 No return.  
 Final Flow:  
 Surface blow in 2 minutes. Bottom of bucket in 38 minutes.  
 Final Shut-In:  
 No return.

MUD DATA-----	
Mud Type	Chemical
Weight	9.20 lb/cf
Vis.	43.00 S/L
W.L.	8.00 in3
F.C.	0.00 in
Mud Drop	
Amt. of fill	0.00 ft
Btm. H. Temp.	118.00 F
Hole Condition	
% Porosity	0.00
Packer Size	6.75 in
No. of Packers	2
Cushion Amt.	0.00
Cushion Type	
Reversed Out	
Tool Chased	
Tester	Shane McBride
Co. Rep.	Wes Lilley
Contr.	Discovery
Rig #	
Unit #	
Pump T.	

RECEIVED

AUG - 9 2001

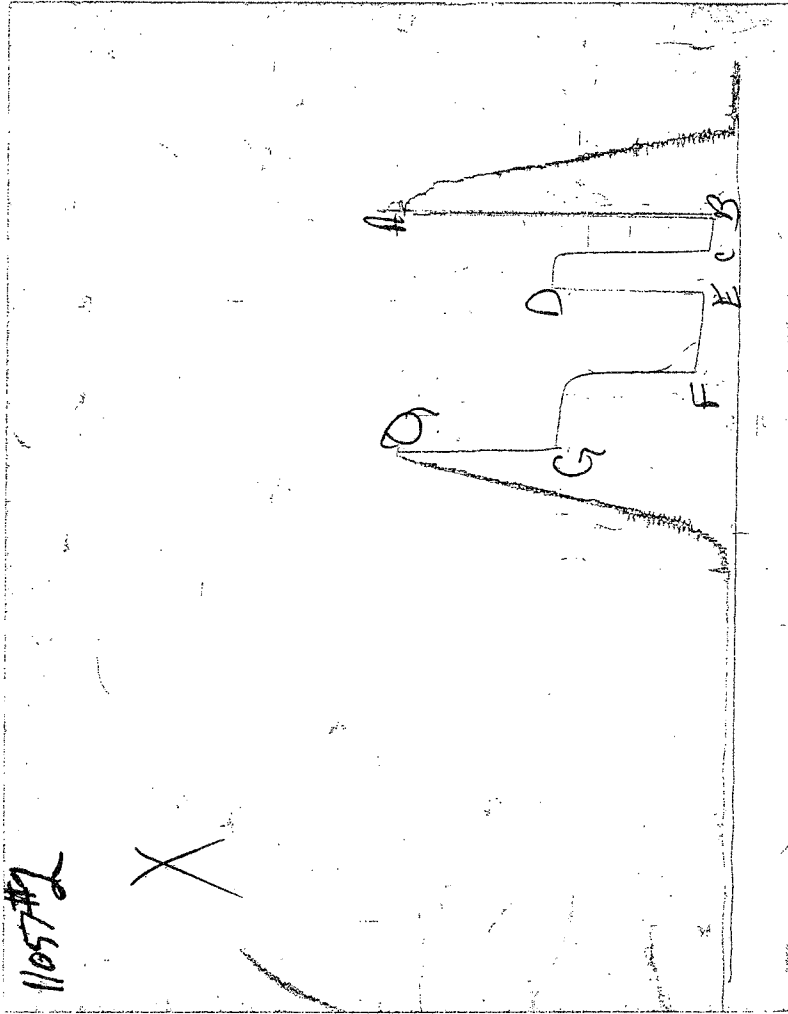
KCC WICHITA

Test Successful: Y

SAMPLES:  
 SENT TO:

# CHART PAGE

This is a photocopy of the actual AK-1 recorder chart



RECEIVED

AUG - 9 2001

KCC WICHITA

# TRILOBITE TESTING L.L.C.

P.O. Box 362 • Hays, Kansas 67601

N<sup>o</sup> 13744

## Test Ticket

Well Name & No. Clem #2 Test No. #2 Date 7-22-01  
 Company McRae & Henry Ltd Zone Tested KC  
 Address 580 Hudson Bay Centre 1600 Stout St Denver Colo. Elevation 2863' KB 2855' GL  
 Co. Rep / Geo. Wes Lilley Cont. Discovery Est. Ft. of Pay      Por.      %  
 Location: Sec. 34 Twp. 17 Rge. 30 Co. Lane State KS  
 No. of Copies None Distribution Sheet (Y, N)      Turnkey (Y, N)      Evaluation (Y, N)     

Interval Tested 4002 4052 Initial Str Wt./Lbs. 44,000 Unseated Str Wt./Lbs. 43,000  
 Anchor Length 50 Wt. Set Lbs. 30,000 Wt. Pulled Loose/Lbs. 60,000  
 Top Packer Depth 3997 Tool Weight 6,500  
 Bottom Packer Depth 4002 Hole Size — 7 7/8"  Rubber Size — 6 3/4"   
 Total Depth 4052 Wt. Pipe Run      Drill Collar Run       
 Mud Wt. 9.2 LCM Tr Vis. 43 WL 8.0 Drill Pipe Size 4 1/2 XH Ft. Run 4037'  
 Blow Description 1" @ open built to 9 1/2" in.

No return  
Surface blow in 2 min, B.O.B in 38 min.  
No return

Recovery — Total Feet 450' GIP      Ft. in DC      Ft. in DP 450'  
 Rec. 150 Feet Of water cut mud %gas      %oil      %water 30% %mud 70%  
 Rec. 300 Feet Of mud cut water %gas      %oil      %water 80% %mud 20%  
 Rec.      Feet Of      %gas      %oil      %water      %mud       
 Rec.      Feet Of      %gas      %oil      %water      %mud       
 Rec.      Feet Of      %gas      %oil      %water      %mud       
 BHT 118° °F Gravity      °API D@      °F Corrected Gravity      °API  
 RW .198 @ 92° °F Chlorides 26,500 ppm Recovery Chlorides 500 ppm System

	AK-1	Alpine	PSI Recorder No.	T-On Location
(A) Initial Hydrostatic Mud	<u>1948</u>		<u>11057</u>	<u>08:00 A.M.</u>
(B) First Initial Flow Pressure	<u>145</u>		(depth) <u>4004'</u>	T-Started <u>08:30 A.M.</u>
(C) First Final Flow Pressure	<u>179</u>		PSI Recorder No. <u>2023</u>	T-Open <u>09:55 A.M.</u>
(D) Initial Shut-In Pressure	<u>1085</u>		(depth) <u>4047'</u>	T-Pulled <u>12:55 P.M.</u>
(E) Second Initial Flow Pressure	<u>201</u>		PSI Recorder No. <u>    </u>	T-Out <u>14:30 P.M.</u>
(F) Second Final Flow Pressure	<u>257</u>		(depth) <u>    </u>	T-Off Location <u>15:10 P.M.</u>
(G) Final Shut-in Pressure	<u>1051</u>		PSI Initial Opening <u>30</u>	Test <u>X</u>
(Q) Final Hydrostatic Mud	<u>1937</u>		PSI Initial Shut-in <u>30</u>	Jars <u>    </u>
			Final Flow <u>60</u>	Safety Joint <u>X</u>
			Final Shut-in <u>60</u>	Straddle <u>    </u>

TRILOBITE TESTING L.L.C. SHALL NOT BE LIABLE FOR DAMAGE OF ANY KIND OF THE PROPERTY OR PERSONNEL OF THE ONE FOR WHOM A TEST IS MADE, OR FOR ANY LOSS SUFFERED OR SUSTAINED, DIRECTLY OR INDIRECTLY, THROUGH THE USE OF ITS EQUIPMENT, OR ITS STATEMENTS OR OPINION CONCERNING THE RESULTS OF ANY TEST. TOOLS LOST OR DAMAGED IN THE HOLE SHALL BE PAID FOR AT COST BY THE PARTY FOR WHOM THE TEST IS MADE.

Approved By John Crawford  
 Our Representative     

RECEIVED

AUG - 9 2001

KCC WICHITA

Circ. Sub X N/C  
 Sampler       
 Extra Packer       
 Elec. Rec.       
 Mileage       
 Other       
 TOTAL PRICE \$

TRILOBITE TESTING L.L.C.

OPERATOR : McRae & Henry LTD

DATE 7-23-01

WELL NAME: Glenn #2

KB 2863.00 ft TICKET NO: 13745 DST #3

LOCATION : 34-17-30 Lane co KS

GR 2855.00 ft FORMATION: KC

INTERVAL : 4228.00 To 4248.00 ft

TD 4248.00 ft TEST TYPE: CONVENTIONAL

RECORDER DATA

Mins		Field	1	2	3	4	TIME DATA-----
PF 30	Rec.	11057	11057				PF Fr. 1200 to 1230 hr
SI 30	Range (Psi )	4500.0	4500.0	0.0	0.0	0.0	IS Fr. 1230 to 1300 hr
SF 30	Clock (hrs)	12	12				SF Fr. 1300 to 1330 hr
FS 30	Depth (ft )	4230.0	4230.0	0.0	0.0	0.0	FS Fr. 1330 to 1400 hr

	Field	1	2	3	4	
A. Init Hydro	2061.0	2054.0	0.0	0.0	0.0	T STARTED 1030 hr
B. First Flow	67.0	66.0	0.0	0.0	0.0	T ON BOTM 1155 hr
B1. Final Flow	67.0	61.0	0.0	0.0	0.0	T OPEN 1200 hr
C. In Shut-in	917.0	891.0	0.0	0.0	0.0	T PULLED 1400 hr
D. Init Flow	78.0	73.0	0.0	0.0	0.0	T OUT 1550 hr
E. Final Flow	78.0	73.0	0.0	0.0	0.0	
F. Fl Shut-in	906.0	890.0	0.0	0.0	0.0	TOOL DATA-----
G. Final Hydro	2049.0	2037.0	0.0	0.0	0.0	Tool Wt. 1500.00 lbs
Inside/Outside	I	I				Wt Set On Packer 30000.00 lbs
						Wt Pulled Loose 62000.00 lbs
						Initial Str Wt 42000.00 lbs
						Unseated Str Wt 42000.00 lbs
						Bot Choke 0.75 in
						Hole Size 7.78 in
						D Col. ID 2.25 in
						D. Pipe ID 3.80 in
						D.C. Length 0.00 ft
						D.P. Length 4226.00 ft

RECOVERY

Tot Fluid 25.00 ft of 0.00 ft in DC and 25.00 ft in DP  
 25.00 ft of Drilling mud  
 0.00 ft of  
 0.00 ft of  
 0.00 ft of  
 0.00 ft of  
 0.00 ft of  
 0.00 ft of

SALINITY 0.00 P.P.M. A.P.I. Gravity 0.00

BLOW DESCRIPTION

Initial Flow:  
 WEak surface blow died in 13 minutes  
 Initial Shut-In:  
 No return.  
 Final Flow:  
 Very weak surface blow died in 6 minutes.  
 Final Shut-In:  
 No return.

MUD DATA-----	
Mud Type	Chemical
Weight	0.00 lb/cf
Vis.	0.00 S/L
W.L.	0.00 in3
F.C.	0.00 in
Mud Drop	
Amt. of fill	0.00 ft
Bot. H. Temp.	118.00 F
Hole Condition	
% Porosity	0.00
Packer Size	6.75 in
No. of Packers	2
Cushion Amt.	0.00
Cushion Type	
Reversed Out	
Tool Chased	
Tester	Shane McBride
Co. Rep.	Wes Lilley
Contr.	Discovery
Rig #	
Unit #	
Pump T.	

RECEIVED

AUG - 9 2001

KCC WICHITA

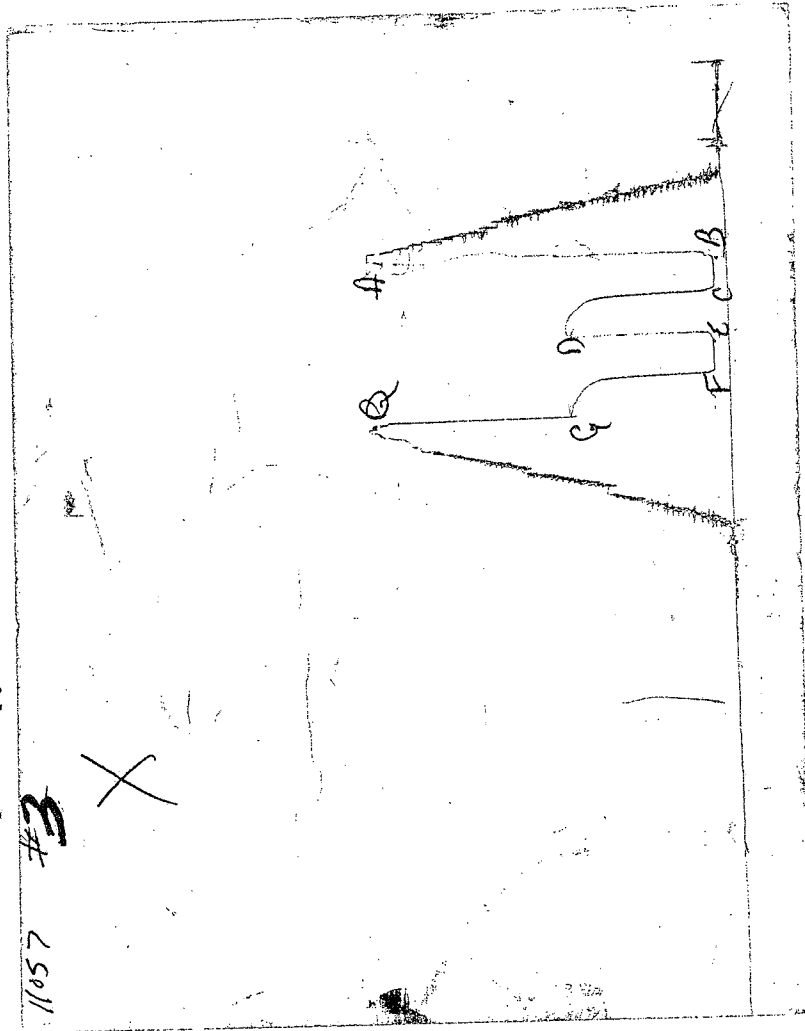
SAMPLES:

SENT TO:

Test Successful: Y

# CHART PAGE

This is a photocopy of the actual AK-1 recorder chart



RECEIVED

AUG - 9 2001

KCC WICHITA

# TRILOBITE TESTING L.L.C.

P.O. Box 362 • Hays, Kansas 67601

No. 13745

## Test Ticket

Well Name & No. Glenn #2 Test No. #3 Date 7-23-01  
Company McRae & Henry Ltd Zone Tested KC  
Address 580 Hudson Bay Centre 1600 Stuart St Denver, Colo Elevation 2863 KB 2055 GL  
Co. Rep / Geo. Wes Lilley Cont. Discovery Est. Ft. of Pay      Por.      %  
Location: Sec. 34 Twp. 17 Rge. 30 Co. Lane State Ks  
No. of Copies norm Distribution Sheet (Y, N)      Turnkey (Y, N)      Evaluation (Y, N)     

Interval Tested 4228' 4248' Initial Str Wt./Lbs. 42000 Unseated Str Wt./Lbs. 42000  
Anchor Length      20' Wt. Set Lbs. 30,000 Wt. Pulled Loose/Lbs. 62000  
Top Packer Depth      4223' Tool Weight 1,500  
Bottom Packer Depth      4228' Hole Size — 7 7/8"  Rubber Size — 6 3/4"   
Total Depth      4248' Wt. Pipe Run      Drill Collar Run       
Mud Wt.      LCM To Vis.      WL      Drill Pipe Size 4 1/2 X H Ft. Run 4224  
Blow Description Weak surface blow died in 13 min

No return  
Very Weak Surface blow died in 6 min  
No return

Recovery — Total Feet 25' GIP      Ft. in DC      Ft. in DP 25'  
Rec. 25' Feet Of Drilling Mud %gas      %oil      %water 100 %mud       
Rec.      Feet Of      %gas      %oil      %water      %mud       
Rec.      Feet Of      %gas      %oil      %water      %mud       
Rec.      Feet Of      %gas      %oil      %water      %mud       
Rec.      Feet Of      %gas      %oil      %water      %mud       
BHT 118° °F Gravity      °API D@      °F Corrected Gravity      °API  
RW      @      °F Chlorides      ppm Recovery Chlorides 500 ppm System

	AK-1	Alpine	PSI Recorder No.	T-On Location
(A) Initial Hydrostatic Mud	<u>2061</u>		<u>11057</u>	<u>09:30 A.M.</u>
(B) First Initial Flow Pressure	<u>67</u>		<u>4230'</u>	<u>10:30 A.M.</u>
(C) First Final Flow Pressure	<u>67</u>		<u>2023</u>	<u>12:00 p.m.</u>
(D) Initial Shut-In Pressure	<u>917</u>		<u>4243'</u>	<u>14:00 p.m.</u>
(E) Second Initial Flow Pressure	<u>78</u>			<u>15:50 p.m.</u>
(F) Second Final Flow Pressure	<u>78</u>			<u>16:30 p.m.</u>
(G) Final Shut-in Pressure	<u>906</u>		Initial Opening <u>30</u>	Test <u>x</u>
(Q) Final Hydrostatic Mud	<u>2049</u>		Initial Shut-in <u>30</u>	Jars <u>    </u>
			Final Flow <u>30</u>	Safety Joint <u>x</u>
			Final Shut-in <u>30</u>	Straddle <u>    </u>

TRILOBITE TESTING L.L.C. SHALL NOT BE LIABLE FOR DAMAGE OF ANY KIND OF THE PROPERTY OR PERSONNEL OF THE ONE FOR WHOM A TEST IS MADE, OR FOR ANY LOSS SUFFERED OR SUSTAINED, DIRECTLY OR INDIRECTLY, THROUGH THE USE OF ITS EQUIPMENT, OR ITS STATEMENTS OR OPINION CONCERNING THE RESULTS OF ANY TEST. TOOLS LOST OR DAMAGED IN THE HOLE SHALL BE PAID FOR AT COST BY THE PARTY FOR WHOM THE TEST IS MADE.

Approved By John A. Crawford  
Our Representative     

RECEIVED  
AUG - 9 2001  
KCC WICHITA

Circ. Sub x A/C  
Sampler       
Extra Packer       
Elec. Rec.       
Mileage 20 way  
Other       
TOTAL PRICE \$

TRILOBITE TESTING L.L.C.

OPERATOR : McRae & Henry LTD  
 WELL NAME: Glenn #2  
 LOCATION : 34-17-30 Lane co KS  
 INTERVAL : 4300.00 To 4370.00 ft

DATE 7-24-01  
 KB 2863.00 ft TICKET NO: 13746 DST #4  
 GR 2855.00 ft FORMATION: Marmaton  
 TD 4370.00 ft TEST TYPE: CONVENTIONAL

RECORDER DATA

Mins		Field	1	2	3	4	TIME DATA-----
PF 30	Rec.	11057	11057				PF Fr. 0835 to 0905 hr
SI 30	Range (Psi )	4500.0	4500.0	0.0	0.0	0.0	IS Fr. 0905 to 0935 hr
SF 30	Clock (hrs)	12	12				SF Fr. 0935 to 1005 hr
FS 30	Depth (ft )	4302.0	4302.0	0.0	0.0	0.0	FS Fr. 1005 to 1035 hr

	Field	1	2	3	4	
A. Init Flow	2083.0	2091.0	0.0	0.0	0.0	T STARTED 0710 hr
B. First Flow	56.0	65.0	0.0	0.0	0.0	T ON BOTM 0830 hr
B1. Final Flow	56.0	65.0	0.0	0.0	0.0	T OPEN 0835 hr
C. In Shut-in	850.0	848.0	0.0	0.0	0.0	T PULLED 1035 hr
D. Init Flow	78.0	95.0	0.0	0.0	0.0	T OUT 1215 hr
E. Final Flow	78.0	87.0	0.0	0.0	0.0	
F. Fl Shut-in	839.0	852.0	0.0	0.0	0.0	
G. Final Hydro	2072.0	2074.0	0.0	0.0	0.0	
Inside/Outside	I	I				

RECOVERY

Tot Fluid 25.00 ft of 0.00 ft in DC and 25.00 ft in DP  
 25.00 ft of Drilling mud  
 0.00 ft of  
 0.00 ft of  
 0.00 ft of  
 0.00 ft of  
 0.00 ft of  
 0.00 ft of  
 0.00 ft of

TOOL DATA-----

Tool Wt.	1500.00 lbs
Wt Set On Packer	30000.00 lbs
Wt Pulled Loose	65000.00 lbs
Initial Str Wt	44000.00 lbs
Unseated Str Wt	44000.00 lbs
Bot Choke	0.75 in
Hole Size	7.78 in
D Col. ID	2.25 in
D. Pipe ID	3.80 in
D.C. Length	0.00 ft
D.P. Length	4314.00 ft

SALINITY 0.00 P.P.M. A.P.I. Gravity 0.00

BLOW DESCRIPTION

Initial Flow:  
 Weak blow died in 12 minutes  
 Initial Shut-In:  
 No return.  
 Final Flow:  
 No blow  
 Final Shut-In:  
 No return.

MUD DATA-----

Mud Type	Chemical
Weight	9.40 lb/cf
Vis.	54.00 S/L
W.L.	7.30 in3
F.C.	0.00 in
Mud Drop	
Amt. of fill	0.00 ft
Btm. H. Temp.	119.00 F
Hole Condition	
% Porosity	0.00
Packer Size	6.75 in
No. of Packers	2
Cushion Amt.	0.00
Cushion Type	
Reversed Out	
Tool Chased	
Tester	Shane McBride
Co. Rep.	Wes Lilley
Contr.	Discovery
Rig #	
Unit #	
Pump T.	

SAMPLES:  
 SENT TO:

RECEIVED

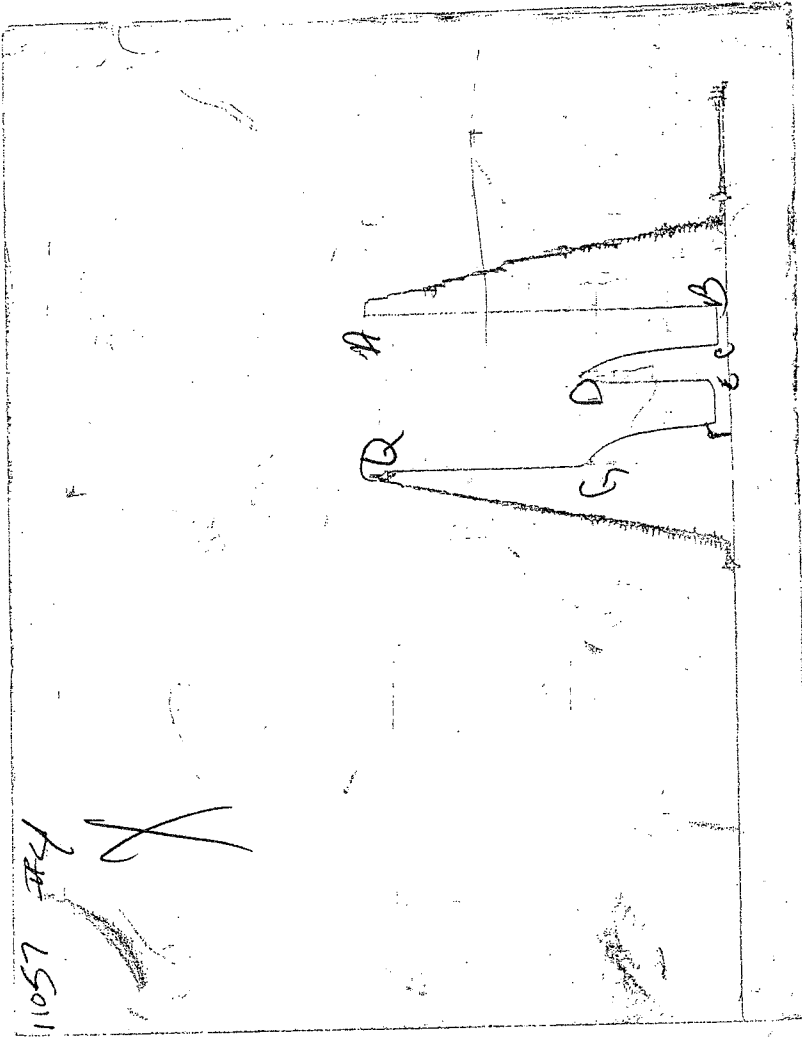
AUG - 9 2001

KCC WICHITA

Test Successful: Y

**CHART PAGE**

This is a photocopy of the actual AK-1 recorder chart



RECEIVED

AUG - 9 2001

KCC WICHITA

# TRILOBITE TESTING L.L.C.

P.O. Box 362 • Hays, Kansas 67601

Nº 13746

## Test Ticket

Well Name & No. Glenn #2 Test No. #4 Date 7-24-01  
 Company McRae & Henry Ltd Zone Tested MINNATOR  
 Address 580 Hudson Bay Centre 1600 Stout St Denver Colo Elevation 2863' KB 2855' GL  
 Co. Rep / Geo. Wes Lilley Cont. Discovery Est. Ft. of Pay      Por.      %  
 Location: Sec. 301 Twp. 17 Rge. 30 Co. Lane State Ks  
 No. of Copies None Distribution Sheet (Y, N) N Turnkey (Y, N)      Evaluation (Y, N)     

Interval Tested 4300 4370 Initial Str Wt./Lbs. 44000 Unseated Str Wt./Lbs. 44000  
 Anchor Length      70 Wt. Set Lbs. 30,000 Wt. Pulled Loose/Lbs. 65,000  
 Top Packer Depth      4295 Tool Weight 1,500  
 Bottom Packer Depth      4300 Hole Size — 7 7/8" ✓ Rubber Size — 6 3/4" ✓  
 Total Depth      4370 Wt. Pipe Run      Drill Collar Run       
 Mud Wt. 9.4 LCM Tr Vis. 54 WL 7.3 Drill Pipe Size 4 1/2 XH Ft. Run 4314'  
 Blow Description Weak blow died in 12 min  
No return  
No blow  
No return

Recovery — Total Feet 25' GIP      Ft. in DC      Ft. in DP       
 Rec. 25' Feet Of Drilling Mud %gas      %oil      %water 100 %mud       
 Rec.      Feet Of      %gas      %oil      %water      %mud       
 Rec.      Feet Of      %gas      %oil      %water      %mud       
 Rec.      Feet Of      %gas      %oil      %water      %mud       
 Rec.      Feet Of      %gas      %oil      %water      %mud       
 BHT 119° °F Gravity      °API D@      °F Corrected Gravity      °API       
 RW      @      °F Chlorides      ppm Recovery Chlorides 500 ppm System

	AK-1	Alpine	PSI	Recorder No.	T-On Location
(A) Initial Hydrostatic Mud	<u>2083</u>			<u>11057</u>	<u>05:30 A.M.</u>
(B) First Initial Flow Pressure	<u>56</u>			(depth) <u>4302'</u>	T-Started <u>07:10 A.M.</u>
(C) First Final Flow Pressure	<u>56</u>			Recorder No. <u>2023</u>	T-Open <u>08:35 A.M.</u>
(D) Initial Shut-In Pressure	<u>850</u>			(depth) <u>4365'</u>	T-Pulled <u>10:35 A.M.</u>
(E) Second Initial Flow Pressure	<u>78</u>			Recorder No. <u>    </u>	T-Out <u>12:15 P.M.</u>
(F) Second Final Flow Pressure	<u>78</u>			(depth) <u>    </u>	T-Off Location <u>13:30 P.M.</u>
(G) Final Shut-in Pressure	<u>839</u>			Initial Opening <u>30</u>	Test X <u>    </u>
(Q) Final Hydrostatic Mud	<u>2072</u>			Initial Shut-in <u>30</u>	Jars <u>    </u>
				Final Flow <u>30</u>	Safety Joint X <u>    </u>
				Final Shut-in <u>30</u>	Straddle <u>    </u>
					Circ. Sub X <u>N/C</u>
					Sampler <u>    </u>
					Extra Packer <u>    </u>
					Elec. Rec. <u>    </u>
					Mileage <u>20</u> / way <u>    </u>
					Other <u>    </u>
					TOTAL PRICE \$ <u>    </u>

TRILOBITE TESTING L.L.C. SHALL NOT BE LIABLE FOR DAMAGE OF ANY KIND OF THE PROPERTY OR PERSONNEL OF THE ONE FOR WHOM A TEST IS MADE, OR FOR ANY LOSS SUFFERED OR SUSTAINED, DIRECTLY OR INDIRECTLY, THROUGH THE USE OF ITS EQUIPMENT, OR ITS STATEMENTS OR OPINION CONCERNING THE RESULTS OF ANY TEST. TOOLS LOST OR DAMAGED IN THE HOLE SHALL BE PAID FOR AT COST BY THE PARTY FOR WHOM THE TEST IS MADE.

Approved By John A Crawford  
 Our Representative     

RECEIVED

AUG - 9 2001

KCC WICHITA