

15-101-22099

1-17s-30w

4-2
IND

GENERAL INFORMATION

RECEIVED
KANSAS CORPORATION COMMISSION

JAN 27 2009

CONSERVATION DIVISION
WICHITA, KS

Client Information:

Company: O'BRIEN ENERGY COMPANY
Contact: JIM ROBBINS
Phone: Fax: e-mail:

Site Information:

Contact: KIM SHOEMAKER
Phone: Fax: e-mail:

Well Information:

Name: JENNISON #1-1
Operator: O'BRIEN ENERGY COMPANY
Location-Downhole: DST #1 LKC 'H-J' 4,098' - 4,193'
Location-Surface: SEC 1-17S-30W LANE COUNTY

CONFIDENTIAL

Test Information:

Company: DIAMOND TESTING
Representative: ROGER D. FRIEDLY
Supervisor: KIM SHOEMAKER
Test Type: CONVENTIONAL Job Number:
Test Unit: NO. 3
Start Date: 2008/06/03 Start Time: 04:04:00
End Date: 2008/06/03 End Time: 09:15:00
Report Date: Prepared By:
Qualified By:

Remarks:

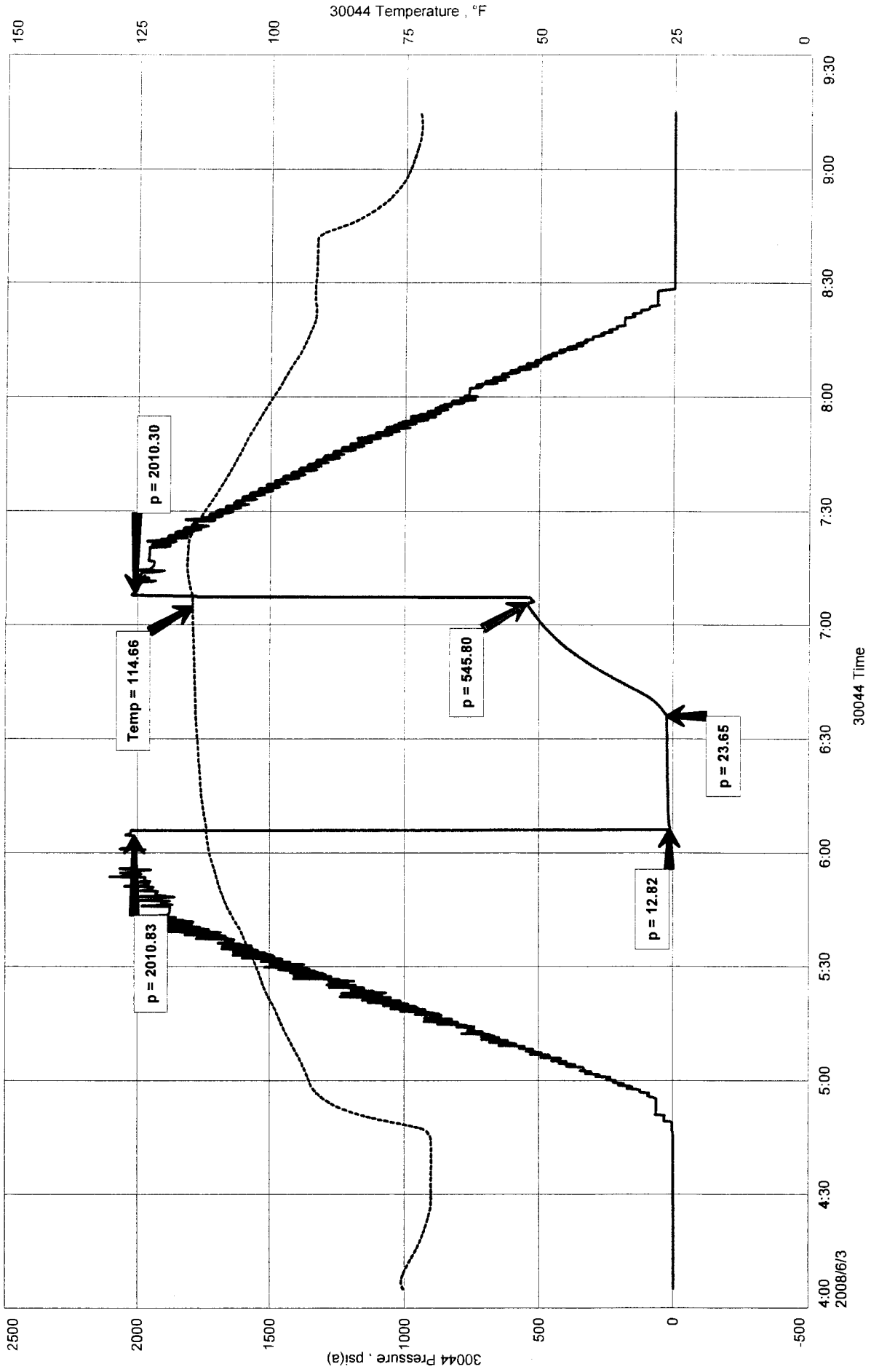
RECOVERED: 20' 100% DM
TOOL SAMPLE: 100% DM WITH A FEW OIL SPECKS

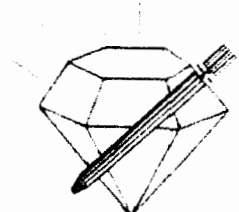
JAN 27 2009

O'BRIEN ENERGY COMPANY
DST #1 LKC 'H-J' 4,098' - 4,193'
Start Test Date: 2008/06/03
Final Test Date: 2008/06/03

JENNISON #1-1
Formation: DST #1 LKC 'H-I' 4,098' - 4,193'
Pool: WILDCAT

JENNISON #1-1





DIAMOND TESTING
 P.O. Box 157
HOISINGTON, KANSAS 67544
 (800) 542-7313

RECEIVED
 KANSAS CORPORATION COMMISSION
JAN 27 2009
 CONSERVATION DIVISION
 WICHITA, KS

CLOCK ON: 04:04
 CLOCK OFF: 09:15

DRILL -STEM TEST TICKET

Company O'BRIEN ENERGY COMPANY Lease & Well No. JENNISON #1-1
 Contractor WW DRILLING RIG 8 Charge to O'BRIEN ENERGY COMPANY
 Elevation 2,847' KB Formation LKC 'H-J' Effective Pay _____ Ft. Ticket No. _____
 Date 6-3-08 Sec. 1 Twp. 17 S Range 30 W County LANE State KANSAS
 Test Approved By KIM SHOEMAKER Diamond Representative ROGER D. FRIEDLY

Formation Test No. 1 Interval Tested from 4,098 ft. to 4,193 ft. Total Depth 4,193 ft.
 Packer Depth 4,093 ft. Size 6 3/4 in. Packer Depth _____ ft. Size _____ in.
 Packer Depth 4,098 ft. Size 6 3/4 in. Packer Depth _____ ft. Size _____ in.

Depth of Selective Zone Set _____
 Top Recorder Depth (Inside) 4,084 ft. Recorder Number 30044 Cap. 5000 P.S.I.
 Bottom Recorder Depth (Outside) 4,190 ft. Recorder Number 3815 Cap. 5700 P.S.I.
 Below Straddle Recorder Depth _____ ft. Recorder Number _____ Cap. _____ P.S.I.

Mud Type CHEMICAL Viscosity 48 Drill Collar Length 123 ft. I.D. 2 1/4 in.
 Weight 9.1 Water Loss 8.0 cc. Weight Pipe Length 0 ft. I.D. 2 7/8 in.
 Chlorides 2,800 P.P.M. Drill Pipe Length 3,949 ft. I.D. 3 1/2 in.
 Jars: Make BOWEN Serial Number SAFTEY JOINT Test Tool Length 26 ft. Tool Size 3 1/2-IF in.
 Did Well Flow? NO Reversed Out NO Anchor Length 95 ft. Size 4 1/2-FH in.
 Main Hole Size 7 7/8 Tool Joint Size 4 1/2 XH in. Surface Choke Size 1 in. Bottom Choke Size 5/8 in.

Blow: 1st Open: WEAK 1/4" BLOW INCREASING TO 1" - DECREASING IN 10 MIN - DIED IN 30 MIN (NObb)
 2nd Open: NOT RUN

Recovered 20 ft. of 100% DM
 Recovered _____ ft. of _____
 Recovered _____ ft. of _____

Recovered _____ ft. of _____	Price Job
Recovered _____ ft. of _____	Other Charges
Remarks: _____	Insurance
TOOL SAMPLE: <u>100% DM WITH A FEW OIL SPECKS</u>	Total

Time Set Packer(s) 6:06 A.M. A.M. P.M. Time Started Off Bottom 7:06 A.M. A.M. P.M. Maximum Temperature 115
 Initial Hydrostatic Pressure (A) 2,011 P.S.I.
 Initial Flow Period Minutes 30 (B) 13 P.S.I. to (C) 24 P.S.I.
 Initial Closed In Period Minutes 30 (D) 546 P.S.I.
 Final Flow Period Minutes 0 (E) _____ P.S.I. to (F) _____ P.S.I.
 Final Closed In Period Minutes 0 (G) _____ P.S.I.
 Final Hydrostatic Pressure (H) 2,010 P.S.I.

Diamond Testing shall not be liable for damages of any kind to the property or personnel of the one for whom a test is made or for any loss suffered or sustained, directly or indirectly, through the use of its equipment, or its statement or opinion concerning the result of any test. Tools lost or damaged in the hole shall be paid for at cost by the party for whom the test is made.

JAN 27 2005

CONSERVATION DIVISION
WICHITA, KS

GENERAL INFORMATION

Client Information:

Company: O'BRIEN ENERGY COMPANY
Contact: JIM ROBBINS
Phone: Fax: e-mail:

Site Information:

Contact: KIM SHOEMAKER
Phone: Fax: e-mail:

Well Information:

Name: JENNISON #1-1
Operator: O'BRIEN ENERGY COMPANY
Location-Downhole: DST #2 LKC 'K-L' 4,191' - 4,260'
Location-Surface: SEC 1-17S-30W LANE COUNTY

Test Information:

Company: DIAMOND TESTING
Representative: ROGER D. FRIEDLY
Supervisor: KIM SHOEMAKER
Test Type: CONVENTIONAL Job Number:
Test Unit: NO. 3
Start Date: 2008/06/03 Start Time: 18:44:00
End Date: 2008/06/03 End Time: 02:24:00
Report Date: Prepared By:
Qualified By:

Remarks:

RECOVERED: 20' CLEAN OIL 24.2 GRAVITY @ 60 deg.
372' OCWM 9% OIL, 20% WTR, 71% MUD
248' OCMW 2% OIL, 41% MUD, 57% WTR
123' SW 100% WTR WITH A SCUM OF OIL (CHLORIDES 29,500 Ppm
763' TOTAL FLUID

TOOL SAMPLE: N 2% OIL, 98% WTR

CONFIDENTIAL

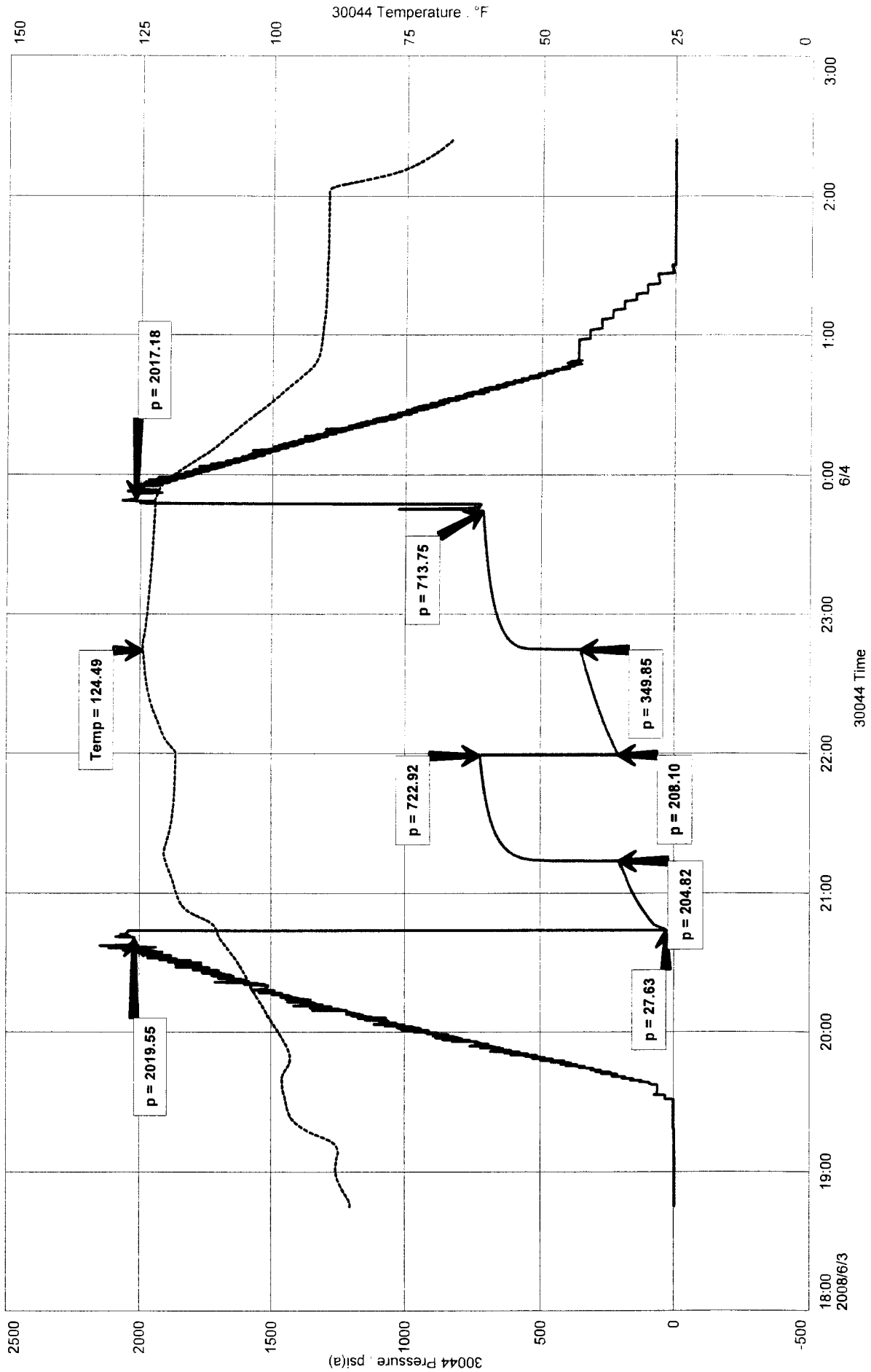
JAN 27 2009

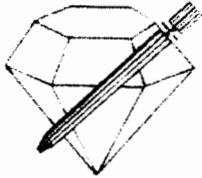
CONSERVATION DIVISION
WICHITA, KS

O'BRIEN ENERGY COMPANY
DST #2 LKC 'K-L' 4,191' - 4,260'
Start Test Date: 2008/06/03
Final Test Date: 2008/06/03

JENNISON #1-1
Formation: DST #2 LKC 'K-L' 4,191' - 4,260'
Pool: WILDCAT

JENNISON #1-1





DIAMOND TESTING
P.O. Box 157
HOISINGTON, KANSAS 67544
(800) 542-7313

CLOCK ON: 18:44

CLOCK OFF: 02:24

DRILL-STEM TEST TICKET

Company O'BRIEN ENERGY COMPANY Lease & Well No. JENNISON #1-1
Contractor WW DRILLING RIG 8 Charge to O'BRIEN ENERGY COMPANY
Elevation 2,847' KB Formation LKC 'K-L' Effective Pay _____ Ft. Ticket No. _____
Date 6-3-08 Sec. 1 Twp. 17 S Range 30 W County LANE State KANSAS
Test Approved By KIM SHOEMAKER Diamond Representative ROGER D. FRIEDLY

Formation Test No. 2 Interval Tested from 4,191 ft. to 4,260 ft. Total Depth 4,260 ft.
Packer Depth 4,186 ft. Size 6 3/4 in. Packer Depth _____ ft. Size _____ in.
Packer Depth 4,191 ft. Size 6 3/4 in. Packer Depth _____ ft. Size _____ in.
Depth of Selective Zone Set _____

Top Recorder Depth (Inside) 4,177 ft. Recorder Number 30044 Cap. 5000 P.S.I.
Bottom Recorder Depth (Outside) 4,257 ft. Recorder Number 3815 Cap. 5700 P.S.I.
Below Straddle Recorder Depth _____ ft. Recorder Number _____ Cap. _____ P.S.I.

Mud Type CHEMICAL Viscosity 53 Drill Collar Length 123 ft. I.D. 2 1/4 in.
Weight 9.3 Water Loss 8.0 cc. Weight Pipe Length 0 ft. I.D. 2 7/8 in.
Chlorides 2,900 P.P.M. Drill Pipe Length 4,042 ft. I.D. 3 1/2 in.
Jars: Make BOWEN Serial Number SAFTEY JOINT Test Tool Length 26 ft. Tool Size 3 1/2-IF in.
Did Well Flow? NO Reversed Out NO Anchor Length 69 ft. Size 4 1/2-FH in.
Main Hole Size 7 7/8 Tool Joint Size 4 1/2 XH in. Surface Choke Size 1 in. Bottom Choke Size 5/8 in.

Blow: 1st Open: WEAK 1/2" BLOW INCREASING TO BOTTOM OF BUCKET IN 11 MIN (NObb)
2nd Open: WEAK 1/8" BLOW INCREASING TO BOTTOM OF BUCKEY IN 15 MIN (NObb)

Recovered 20 ft. of CLEAN OIL 24.2 GRAVITY @ 60 deg.
Recovered 372 ft. of OCWM 9% OIL, 20% WTR, 71% MUD
Recovered 248 ft. of OCMW 2% OIL, 41% MUD, 57% WTR
Recovered 123 ft. of SW 100% WTR WITH A SCUM OF OIL
Recovered 763 ft. of TOTAL FLUID (CHLORIDES 29, 500 Ppm)

Remarks:	Price Job
	Other Charges
	Insurance
TOOL SAMPLE: 2% OIL, 98% WTR	Total

Time Set Packer(s) 8:44 P.M. A.M. P.M. Time Started Off Bottom 11:44 P.M. A.M. P.M. Maximum Temperature 124
Initial Hydrostatic Pressure (A) 2,020 P.S.I.
Initial Flow Period Minutes 30 (B) 28 P.S.I. to (C) 205 P.S.I.
Initial Closed In Period Minutes 45 (D) 723 P.S.I.
Final Flow Period Minutes 45 (E) 208 P.S.I. to (F) 350 P.S.I.
Final Closed In Period Minutes 60 (G) 714 P.S.I.
Final Hydrostatic Pressure (H) 2,017 P.S.I.

RECEIVED
KANSAS CORPORATION COMMISSION

JAN 27 2008

CONSERVATION DIVISION
WICHITA, KS

Diamond Testing shall not be liable for damages of any kind to the property or personnel of the one for whom a test is made or for any other person for any loss or damage, directly or indirectly, through the use of its equipment, or its statement or opinion concerning the result of any test. Tools lost or damaged in the hole shall be paid for at cost by the party for whom the test is made.

JAN 27 2009

CONSERVATION DIVISION
WICHITA, KS

GENERAL INFORMATION

Client Information:

Company: O'BRIEN ENERGY COMPANY
Contact: JIM ROBBINS
Phone: Fax: e-mail:

Site Information:

Contact: KIM SHOEMAKER
Phone: Fax: e-mail:

Well Information:

Name: JENNISON #1-1
Operator: O'BRIEN ENERGY COMPANY
Location-Downhole: DST #3 LKC 'L' 4,230' - 4,260'
Location-Surface: SEC 1-17S-30W LANE COUNTY

CONFIDENTIAL

Test Information:

Company: DIAMOND TESTING
Representative: ROGER D. FRIEDLY
Supervisor: KIM SHOEMAKER
Test Type: CONVENTIONAL Job Number:
Test Unit: NO. 3
Start Date: 2008/06/04 Start Time: 02:59:00
End Date: 2008/06/04 End Time: 09:52:00
Report Date: Prepared By:
Remarks: Qualified By:

RECOVERED: 30' CLEAN OIL 24.6 GRAVITY @ 60 deg.
124' G&OCMW 8% GAS, 20% OIL, 26% MUD, 47% WTR
248' MCOW 4% MUD, 5% OIL, 91% WTR
309' SW 100% SW WITH A SCUM OF OIL (CHLORIDES 27,500 Ppm)
711' TOTAL FLUID

TOOL SAMPLE: 2% OIL, 98% WTR

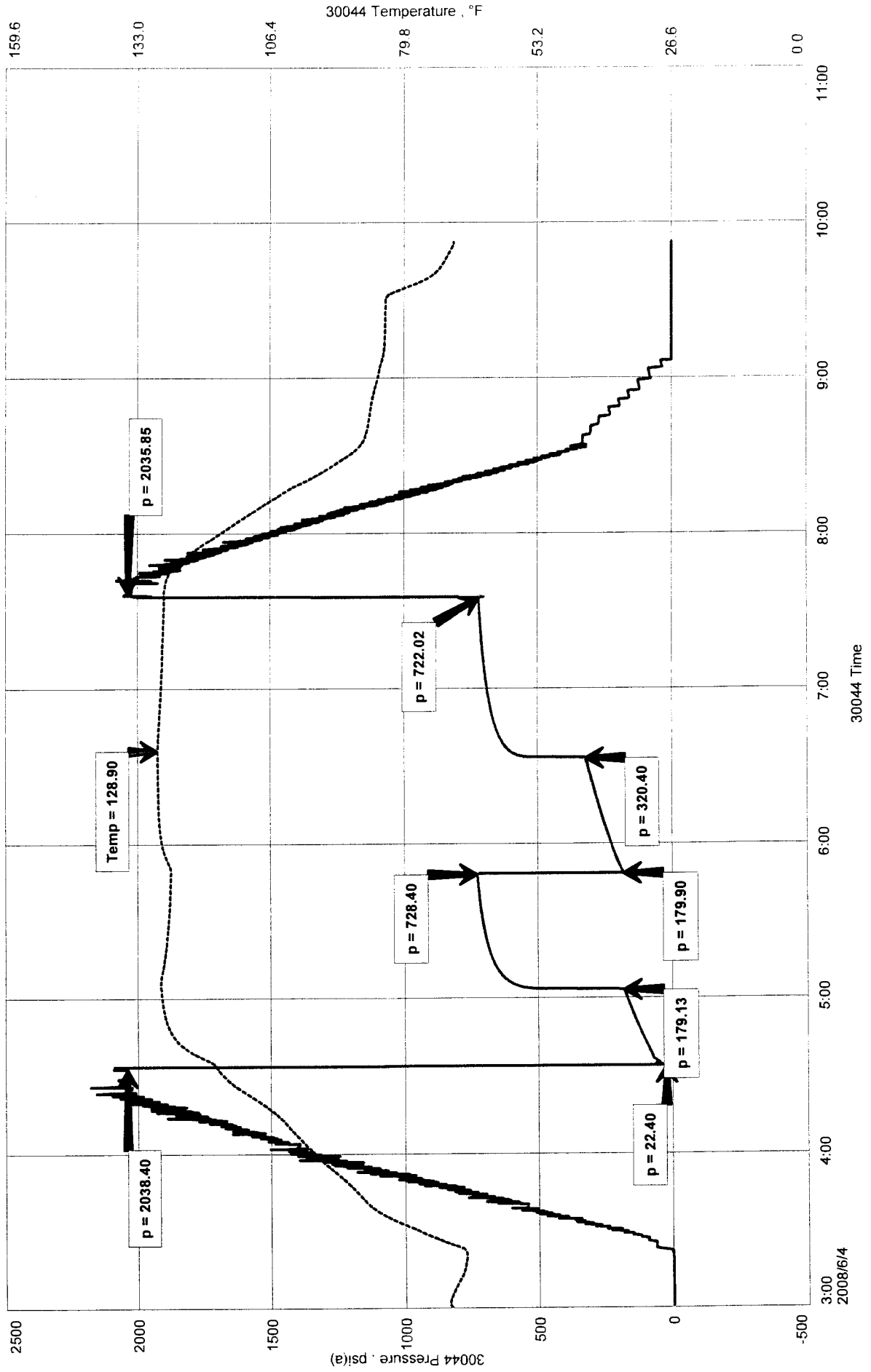
JAN 27 2009

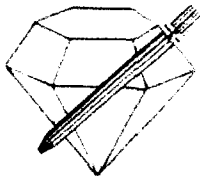
CONSERVATION DIVISION
WICHITA, KS

O'BRIEN ENERGY COMPANY
DST #3 LKC 'L' 4,230' - 4,260'
Start Test Date: 2008/06/04
Final Test Date: 2008/06/04

JENNISON #1-1
Formation: DST #3 LKC 'L' 4,230' - 4,260'
Pool: WILDCAT

JENNISON #1-1





RECEIVED
KANSAS CORPORATION COMMISSION
DIAMOND TESTING
 P.O. Box 157
HOISINGTON, KANSAS 67544
 (800) 542-7313

JAN 27 2005

CLOCK ON: 02:59

CLOCK OFF: 09:52

CONSERVATION DIVISION
WICHITA, KS

DRILL-STEM TEST TICKET

Company O'BRIEN ENERGY COMPANY Lease & Well No. JENNISON #1-1
 Contractor WW DRILLING RIG 8 Charge to O'BRIEN ENERGY COMPANY
 Elevation 2,847' KB Formation LKC 'L' Effective Pay _____ Ft. Ticker No. _____
 Date 6-4-08 Sec. 1 Twp. 17 S Range 30 W County LANE State KANSAS
 Test Approved By KIM SHOEMAKER Diamond Representative ROGER D. FRIEDLY

Formation Test No. 3 Interval Tested from 4,230 ft. to 4,260 ft. Total Depth 4,260 ft.
 Packer Depth 4,225 ft. Size 6 3/4 in. Packer Depth _____ ft. Size _____ in.
 Packer Depth 4,230 ft. Size 6 3/4 in. Packer Depth _____ ft. Size _____ in.

Depth of Selective Zone Set _____
 Top Recorder Depth (Inside) 4,216 ft. Recorder Number 30044 Cap. 5000 P.S.I.
 Bottom Recorder Depth (Outside) 4,257 ft. Recorder Number 3815 Cap. 5700 P.S.I.
 Below Straddle Recorder Depth _____ ft. Recorder Number _____ Cap. _____ P.S.I.

Mud Type CHEMICAL Viscosity 53 Drill Collar Length 123 ft. I.D. 2 1/4 in.
 Weight 9.3 Water Loss 8.0 cc. Weight Pipe Length 0 ft. I.D. 2 7/8 in.
 Chlorides 2,900 P.P.M. Drill Pipe Length 4,081 ft. I.D. 3 1/2 in.
 Jars: Make BOWEN Serial Number SAFTEY JOINT Test Tool Length 26 ft. Tool Size 3 1/2-IF in.
 Did Well Flow? NO Reversed Out NO Anchor Length 30 ft. Size 4 1/2-FH in.
 Main Hole Size 7 7/8 Tool Joint Size 4 1/2 XH in. Surface Choke Size 1 in. Bottom Choke Size 5/8 in.

Blow: 1st Open: FAIR 1" BLOW INCREASING TO BOTTOM OF BUCKET IN 10 1/2 MIN (NObb)
 2nd Open: WEAK 1/2" BLOW INCREASING TO BOTTOM OF BUCKET IN 15 MIN (NObb)

Recovered 30 ft. of CLEAN OIL 24.6 GRAVITY @ 60 deg.
 Recovered 124 ft. of G&OCMW 8% GAS, 20% OIL, 25% MUD, 47% WTR
 Recovered 248 ft. of MCOW 4% MUD, 5% OIL, 91% WTR
 Recovered 309 ft. of SW 100% WTR WITH A SCUM OF OIL
 Recovered 711 ft. of TOTAL FLUID (CHLORIDES 27,500 Ppm)

Remarks: _____	Price Job
_____	Other Charges
_____	Insurance
_____	Total

TOOL SAMPLE: 2% OIL, 98% WTR

Time Set Packer(s) <u>4:34 A.M.</u> A.M. P.M.	Time Started Off Bottom <u>7:34 A.M.</u> A.M. P.M.	Maximum Temperature <u>129</u>
Initial Hydrostatic Pressure _____ (A) <u>2,038</u> P.S.I.		
Initial Flow Period _____ Minutes <u>30</u> (B) <u>22</u> P.S.I. to (C) <u>179</u> P.S.I.		
Initial Closed In Period _____ Minutes <u>45</u> (D) <u>728</u> P.S.I.		
Final Flow Period _____ Minutes <u>45</u> (E) <u>180</u> P.S.I. to (F) <u>320</u> P.S.I.		
Final Closed In Period _____ Minutes <u>60</u> (G) <u>722</u> P.S.I.		
Final Hydrostatic Pressure _____ (H) <u>2,036</u> P.S.I.		

Diamond Testing shall not be liable for damages of any kind to the property or personnel of the one for whom a test is made or for any loss suffered or sustained, directly or indirectly, through the use of its equipment, or its statement or opinion concerning the result of any test. Tools lost or damaged in the hole shall be paid for at cost by the party for whom the test is made.

GENERAL INFORMATION

RECEIVED
KANSAS CORPORATION COMMISSION
JAN 27 2009
CONSERVATION DIVISION
WICHITA, KS

Client Information:

Company: O'BRIEN ENERGY COMPANY
Contact: JIM ROBBINS
Phone: Fax: e-mail:

Site Information:

Contact: KIM SHOEMAKER
Phone: Fax: e-mail:

Well Information:

Name: JENNISON #1-1
Operator: O'BRIEN ENERGY COMPANY
Location-Downhole: DST #4 ALTAMONT/FT SCOTT 4,353' - 4,460'
Location-Surface: SEC 1-17S-30W LANE COUNTY

CONFIDENTIAL

Test Information:

Company: DIAMOND TESTING
Representative: ROGER D. FRIEDLY
Supervisor: KIM SHOEMAKER
Test Type: CONVENTIONAL Job Number:
Test Unit: NO. 3
Start Date: 2008/06/05 Start Time: 07:59:00
End Date: 2008/06/05 End Time: 13:57:00
Report Date: Prepared By:
Qualified By:

Remarks:

RECOVERED: 10' DM 100% MUD
TOOL SAMPLE: 100% DM WITH A FEW OIL SPECKS

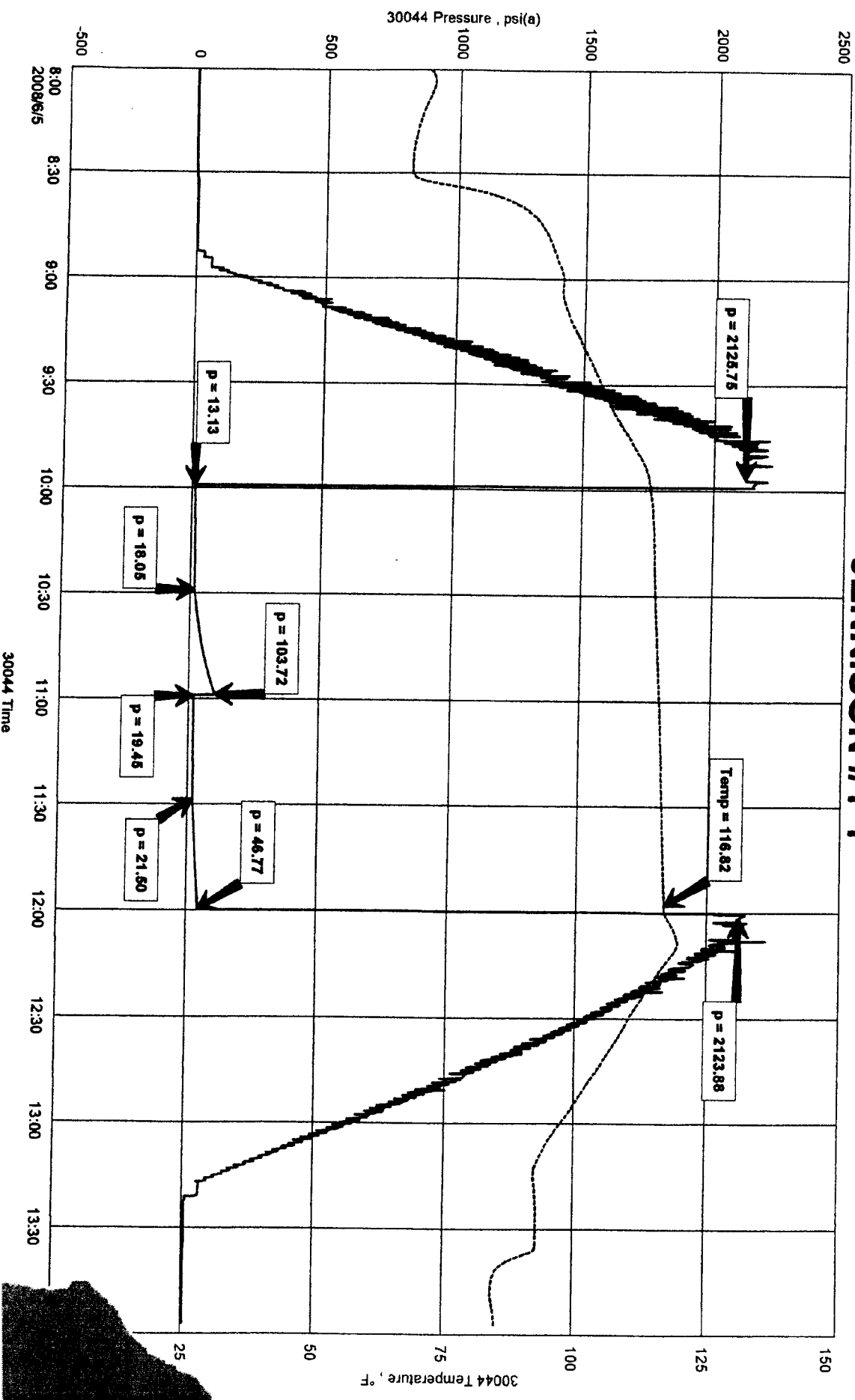
6002 2 NJ

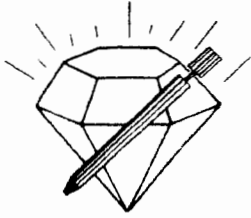
RECEIVED
KANSAS CORPORATION

O'BRIEN ENERGY COMPANY
DST #4 ALTAMONT/FT SCOTT 4,353' - 4,460'
Start Test Date: 2008/06/05
Final Test Date: 2008/06/05

JENNISON #1-1

Formation: DST #4 ALTAMONT/FT SCOTT 4,353' - 4,460'
Pool: WILDCAT





JAN 27 2009

CONSERVATION DIVISION
WICHITA, KS

DIAMOND TESTING
P.O. Box 157
HOISINGTON, KANSAS 67544
(620) 653-7550 • (800) 542-7313

Page 1 of 2 Pages

Company O'Brien Energy Company Lease & Well No. Jennison No. 1-1
Elevation 2847 KB Formation Altamont/Ft. Scott Effective Pay -- Ft. Ticket No. 2456
Date 6-05-08 Sec. 1 Twp. 17S Range 30W County Lane State Kansas
Test Approved By Kim B. Shoemaker Diamond Representative Roger D. Friedly

Formation Test No. 4 Interval Tested from 4,353 ft. to 4,460 ft. Total Depth 4,460 ft.
Packer Depth 4,348 ft. Size 6 3/4 in. Packer Depth -- ft. Size -- in.
Packer Depth 4,353 ft. Size 6 3/4 in. Packer Depth -- ft. Size -- in.
Depth of Selective Zone Set ft.

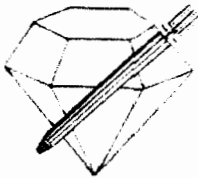
Top Recorder Depth (Inside) 4,339 ft. Recorder Number 30044 Cap. 5,000 psi
Bottom Recorder Depth (Outside) 4,457 ft. Recorder Number 3815 Cap. 5,700 psi
Below Straddle Recorder Depth ft. Recorder Number Cap. psi

Drilling Contractor WW Drilling, LLC - Rig 8 Drill Collar Length 123 ft. I.D. 2 1/4 in.
Mud Type Chemical Viscosity 53 Weight Pipe Length -- ft. I.D. -- in.
Weight 9.4 Water Loss 8.8 cc. Drill Pipe Length 4,204 ft. I.D. 3 1/2 in.
Chlorides 3,100 P.P.M. Test Tool Length 26 ft. Tool Size 3 1/2 - IF in.
Jars: Make Sterling Serial Number Not Run Anchor Length 48' perf. w/59' drill pipe Size 4 1/2 - FH in.
Did Well Flow? No Reversed Out No Surface Choke Size 1 in. Bottom Choke Size 5/8 in.
Main Hole Size 7 7/8 in. Tool Joint Size 4 1/2 - XH in.

Blow: 1st Open: Weak, 1/2 in., blow decreasing in 8 mins. Died in 25 mins. No blow back during shut-in.
2nd Open: No blow. No blow back during shut-in.

Recovered 10 ft. of drilling mud = .049200 bbls. (Grind out: 100%-drilling mud)
Recovered ft. of
Recovered ft. of
Recovered ft. of
Recovered ft. of
Remarks Tool Sample Grind Out: 100%-drilling mud with a few oil specks

Time Set Packer(s) 9:59 ~~P.M.~~ ^{A.M.} Time Started Off Bottom 11:59 ~~P.M.~~ ^{A.M.} Maximum Temperature 117°
Initial Hydrostatic Pressure (A) 2126 P.S.I.
Initial Flow Period Minutes 30 (B) 13 P.S.I. to (C) 18 P.S.I.
Initial Closed In Period Minutes 30 (D) 104 P.S.I.
Final Flow Period Minutes 30 (E) 19 P.S.I. to (F) 22 P.S.I.
Final Closed In Period Minutes 30 (G) 47 P.S.I.
Final Hydrostatic Pressure (H) 2124 P.S.I.



RECEIVED
DIAMOND TESTING WICHITA CORPORATION COMMISSION
 P.O. Box 157
 HOISINGTON, KANSAS 67544 **JAN 27 2009**
 (800) 542-7313
 CONSERVATION DIVISION
DRILL -STEM TEST TICKET WICHITA, KS

CLOCK ON: 00:04

CLOCK OFF: 09:06

Company O'BRIEN ENERGY COMPANY Lease & Well No. JENNISON #1-1
 Contractor WW DRILLING RIG 8 Charge to O'BRIEN ENERGY COMPANY
 Elevation 2,847' KB Formation CHEROKEE / JOHNSON Effective Pay _____ Ft. Ticket No. _____
 Date 6-6-08 Sec. 1 Twp. 17 S Range 30 W County LANE State KANSAS
 Test Approved By KIM SHOEMAKER Diamond Representative ROGER D. FRIEDLY

Formation Test No. 5 Interval Tested from 4,462 ft. to 4,520 ft. Total Depth 4,520 ft.
 Packer Depth 4,457 ft. Size 6 3/4 in. Packer Depth _____ ft. Size _____ in.
 Packer Depth 4,462 ft. Size 6 3/4 in. Packer Depth _____ ft. Size _____ in.
 Depth of Selective Zone Set _____

Top Recorder Depth (Inside) 4,448 ft. Recorder Number 30044 Cap. 5000 P.S.I.
 Bottom Recorder Depth (Outside) 4,517 ft. Recorder Number 3815 Cap. 5700 P.S.I.
 Below Straddle Recorder Depth _____ ft. Recorder Number _____ Cap. _____ P.S.I.

Mud Type CHEMICAL Viscosity 53 Drill Collar Length 123 ft. I.D. 2 1/4 in.
 Weight 9.4 Water Loss 8.8 cc. Weight Pipe Length 0 ft. I.D. 2 7/8 in.
 Chlorides 3,100 P.P.M. Drill Pipe Length 4,313 ft. I.D. 3 1/2 in.
 Jars: Make BOWEN Serial Number SAFTEY JOINT Test Tool Length 26 ft. Tool Size 3 1/2-1F in.
 Did Well Flow? NO Reversed Out YES Anchor Length 58 ft. Size 4 1/2-FH in.
 Main Hole Size 7 7/8 Tool Joint Size 4 1/2 XH in. Surface Choke Size 1 in. Bottom Choke Size 5/8 in.

Blow: 1st Open: GOOD 2" BLOW INCREASING TO BOTTOM OF BUCKET IN 3 1/2 MIN (F2"bb)
 2nd Open: FAIR 1" BLOW INCREASING TO BOTTOM OF BUCKET IN 5 1/2 MIN (F1"bb)

Recovered 1,040 ft. of GAS IN PIPE
 Recovered 40 ft. of OCM 8% OIL, 92% MUD
 Recovered 186 ft. of W&GCMO 9% WTR, 10% GAS, 24% MUD, 57% OIL

Recovered <u>1,301</u> ft. of <u>(CIR OUT) M&GCWO 4% MUD, 14% GAS, 26% WTR, 56% OIL</u>	Price Job
Recovered <u>123</u> ft. of <u>SW 100% WTR WITH SCUM OF OIL</u>	Other Charges
Remarks: <u>1,650'</u> TOTAL FLUID (CHLORIDES 18,000 Ppm)	Insurance
TOOL SAMPLE: <u>10% GAS, 32% WTR, 58% OIL</u>	Total

Time Set Packer(s) 2:14 A.M. A.M. P.M. Time Started Off Bottom 5:14 A.M. A.M. P.M. Maximum Temperature 132
 Initial Hydrostatic Pressure (A) 2,175 P.S.I.
 Initial Flow Period Minutes 30 (B) 58 P.S.I. to (C) 369 P.S.I.
 Initial Closed In Period Minutes 45 (D) 1,125 P.S.I.
 Final Flow Period Minutes 45 (E) 370 P.S.I. to (F) 640 P.S.I.
 Final Closed In Period Minutes 60 (G) 1,103 P.S.I.
 Final Hydrostatic Pressure (H) 2,170 P.S.I.

Diamond Testing shall not be liable for damages of any kind to the property or personnel of the one for whom a test is made or for any loss suffered or sustained, directly or indirectly, through the use of its equipment, or its statement or opinion concerning the result of any test. Tools lost or damaged in the hole shall be paid for at cost by the party for whom the test is made.

RECEIVED
KANSAS CORPORATION COMMISSION

JAN 27 2009

CONSERVATION DIVISION
WICHITA, KS

GENERAL INFORMATION

Client Information:

Company: O'BRIEN ENERGY COMPANY
Contact: JIM ROBBINS
Phone: Fax: e-mail:

Site Information:

Contact: KIM SHOEMAKER
Phone: Fax: e-mail:

Well Information:

Name: JENNISON #1-1
Operator: O'BRIEN ENERGY COMPANY
Location-Downhole: DST #5 CHEROKEE / JOHNSON 4,462' - 4,520'
Location-Surface: SEC 1-17S-30W LANE COUNTY

Test Information:

Company: DIAMOND TESTING
Representative: ROGER D. FRIEDLY
Supervisor: KIM SHOEMAKER
Test Type: CONVENTIONAL NO. 3 Job Number:
Test Unit: 08/06/06
Start Date: 2008/06/06 Start Time: 00:04:00
End Date: 2008/06/06 End Time: 09:06:00
Report Date: Prepared By:
Qualified By:

Remarks:

RECOVERED: 1,040' GAS IN PIPE
40' OCM 8% OIL, 92% MUD
186' W&GCMO 9% WTR, 10% GAS, 24% MUD, 57% OIL
CIR. OUT 1,301' M&GCWO 4% MUD, 14% GAS, 26% WTR, 56% OIL
123' SALT WATER WITH SCUM OF OIL (CHLORIDES 18,000 Ppm)
1,650' TOTAL FLUID
TOOL SAMPLE: 10% GAS, 32% WTR, 58% OIL

CONFIDENTIAL

JAN 27 2009

O'BRIEN ENERGY COMPANY
DST #5 CHEROKEE / JOHNSON 4,462' - 4,520'
Start Test Date: 2008/06/06
Final Test Date: 2008/06/06

JENNISON #1-1
Formation: DST #5 CHEROKEE / JOHNSON 4,462' - 4,520'
Pool: WILDCAT

JENNISON #1-1

