



**DIAMOND TESTING**  
 P.O. Box 157  
 HOISINGTON, KANSAS 67544  
 (620) 653-7550 • (800) 542-7313

RECEIVED

AUG 20 2002

KCC WICHITA

Page 1 of 5 Pages

ORIGINAL

CONFIDENTIAL

Company Ritchie Exploration, Inc. Lease & Well No. M. Wilkens No. 1  
 Elevation 2882 KB Formation Lansing/Kansas City "C" Effective Pay 4 Ft. Ticket No. J1247  
 Date 5-21-02 Sec. 5 Twp. 17S Range 30W County Lane State Kansas  
 Test Approved By Kim B. Shoemaker Diamond Representative John C. Riedl

Formation Test No. 1 Interval Tested from 3,966 ft. to 3,992 ft. Total Depth 3,992 ft.  
 Packer Depth 3,961 ft. Size 6 3/4 in. Packer Depth -- ft. Size -- in.  
 Packer Depth 3,966 ft. Size 6 3/4 in. Packer Depth -- ft. Size -- in.  
 Depth of Selective Zone Set          ft.

Top Recorder Depth (Inside) 3,968 ft. Recorder Number Elec. Cap. 5,000 psi  
 Bottom Recorder Depth (Outside) 3,989 ft. Recorder Number 13556 Cap. 5,475 psi  
 Below Straddle Recorder Depth          ft. Recorder Number          Cap.          psi

Drilling Contractor L. D. Drilling, Inc. - Rig 1 Drill Collar Length -- ft. I.D. -- in.  
 Mud Type Chemical Viscosity 44 Weight Pipe Length -- ft. I.D. -- in.  
 Weight 9.2 Water Loss 9.6 cc. Drill Pipe Length 3,946 ft. I.D. 3 1/2 in.  
 Chlorides 2,500 P.P.M. Test Tool Length 20 ft. Tool Size 3 1/2 - IF in.  
 Jars: Make Bowen Serial Number Not Run Anchor Length 26 ft. Size 4 1/2 - FH in.  
 Did Well Flow? No Reversed Out No Surface Choke Size 1 in. Bottom Choke Size 5/8 in.  
 Main Hole Size 7 7/8 in. Tool Joint Size 4 1/2 - XH in.

Blow: 1st Open: Strong blow. Off bottom of bucket in 16 mins. 3 in. blow back during shut-in.  
 2nd Open: Strong blow. Off bottom of bucket in 17 mins. 7 in. blow back during shut-in.

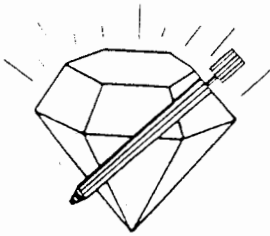
Recovered 300 ft. of gas in pipe  
 Recovered 170 ft. of clean gassy oil = 1.744200 bbls. (Grind out: 10%-gas; 90%-oil) Gravity: 31 @ 60°  
 Recovered 60 ft. of slightly mud cut gassy oil = .615600 bbls. (Grind out: 15%-mud; 15%-gas; 70%-oil)  
 Recovered 60 ft. of muddy gassy oil = .615600 bbls. (Grind out: 40%-mud; 15%-gas; 45%-oil)  
 Recovered 290 ft. of TOTAL FLUID = 2.975400 bbls.

**KCC**  
**AUG 27 2002**

Remarks         

CONFIDENTIAL

Time Set Packer(s) 6:42 <sup>XXM.</sup> P.M. Time Started Off Bottom 9:57 <sup>XXM.</sup> P.M. Maximum Temperature 119°  
 Initial Hydrostatic Pressure ..... (A) 1897 P.S.I.  
 Initial Flow Period ..... Minutes 30 (B) 13 P.S.I. to (C) 59 P.S.I.  
 Initial Closed In Period ..... Minutes 45 (D) 383 P.S.I.  
 Final Flow Period ..... Minutes 60 (E) 61 P.S.I. to (F) 122 P.S.I.  
 Final Closed In Period ..... Minutes 60 (G) 372 P.S.I.  
 Final Hydrostatic Pressure ..... (H) 1897 P.S.I.



**DIAMOND TESTING**  
P.O. Box 157  
**HOISINGTON, KANSAS 67544**  
(620) 653-7550 • (800) 542-7313

**FLUID SAMPLE DATA**

Company Ritchie Exploration, Inc.  
Lease & Well No. M. Wilkens No. 1  
Date 5-21-02 Sec. 5 Twp. 17 S Range 30 W  
Formation Test No. 1 Interval Tested From 3,966 ft. to 3,992 ft. Total Depth 3,992 ft.  
Formation Lansing/Kansas City "C"

	<u>MUD PIT</u>	<u>RECOVERY</u>	
Viscosity	<u>44</u> CP	<u>--</u> CP	TOO OILY TO CHECK.
Weight	<u>9.2</u>	<u>--</u>	
Water Loss	<u>9.6</u> CC	<u>--</u> CC	
PH Factor	<u>10.0</u>	<u>--</u>	

	<u>RESISTIVITY</u>	<u>CHLORIDE CONTENT</u>
Recovery Water	<u>--</u> @ <u>--</u> °F.	<u>--</u> ppm
Recovery Mud	<u>--</u> @ <u>--</u> °F.	<u>--</u> ppm
Recovery Mud Filtrate	<u>--</u> @ <u>--</u> °F.	<u>--</u> ppm
Mud Pit Sample	<u>2.60</u> @ <u>70</u> °F.	<u>2,600</u> ppm
Mud Pit Sample Filtrate	<u>2.20</u> @ <u>70</u> °F.	<u>2,800</u> ppm

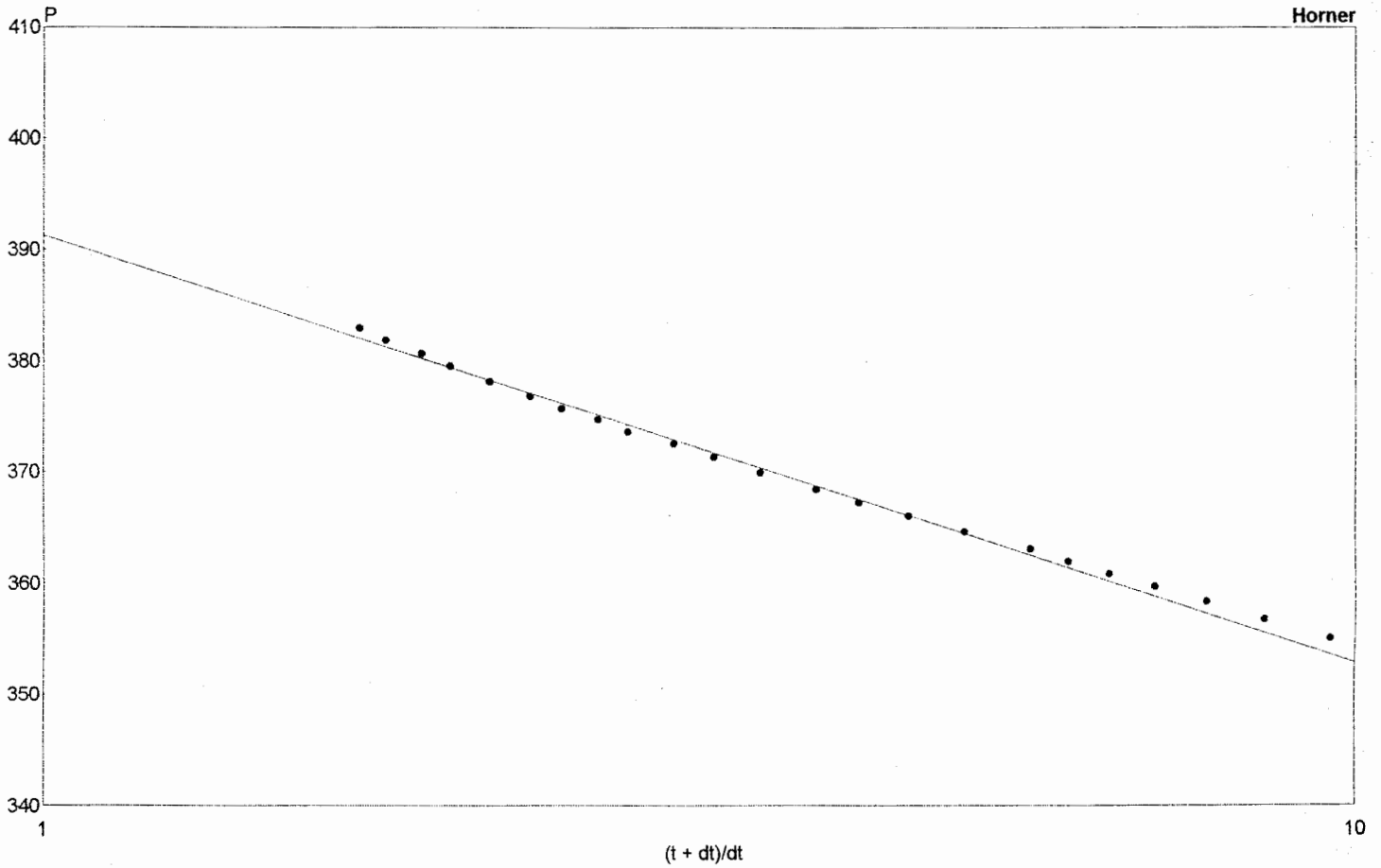
Sample Taken By JOHN C. RIEDL

Witness By Kim B. Shoemaker

Remarks Pit filtrate triton dish chlorides were 2,500 Ppm.

\_\_\_\_\_  
\_\_\_\_\_  
\_\_\_\_\_  
\_\_\_\_\_

WILKENS 1



WILKENS 1

Analysis Results: Horner

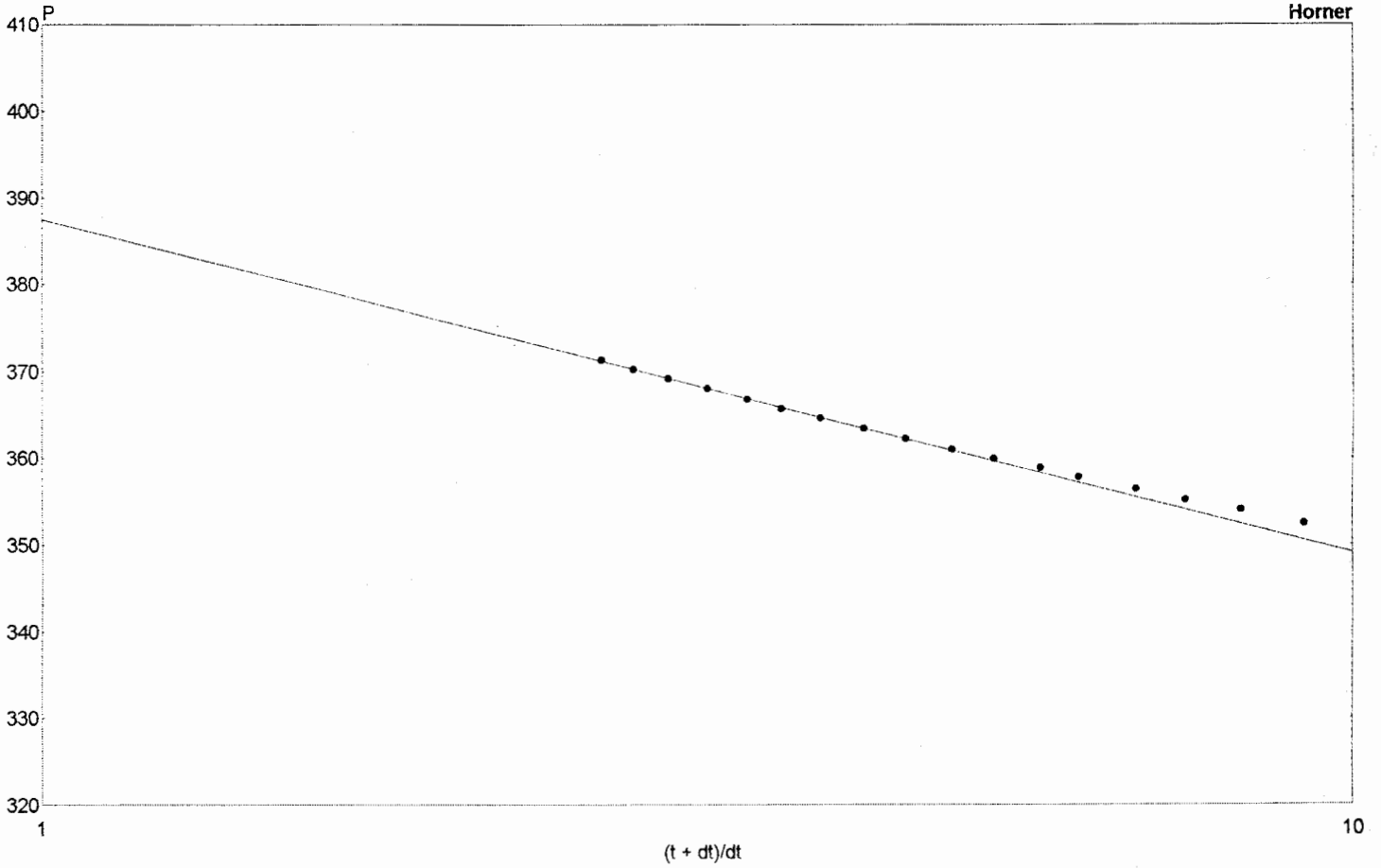
Parameters:

Slope = -38.3847  
m(1 hr) = 384.551  
Prd Time: = 0.5 hr

Calculated Values:

kh = 46.5873 md-ft  
k = 3.88228 md  
Skin = 4.74114  
P\* = 391.31 psi

WILKENS 1



WILKENS 1

Analysis Results: Horner

Parameters:

Slope = -38.3812  
m(1 hr) = 372.239  
Prd Time: = 1.5 hr

Calculated Values:

kh = 46.5916 md-ft  
k = 11.6479 md  
Skin = 5.30372  
P\* = 387.51 psi

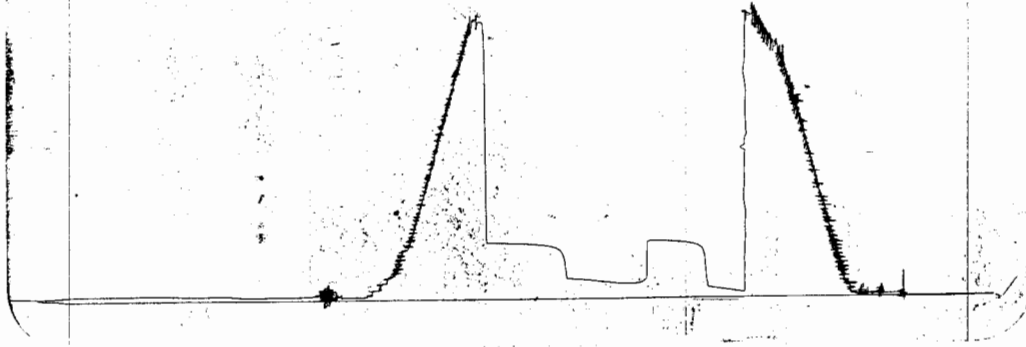
RITCHIE EXPLORATION INC

DESCRIPTION	SECOND	FIRST	PRESSURE	PIPE	FLUID	TIME	BARRELS	TOTAL	DAILY
FINAL FLOW PERIOD	READING	READING	CHANGE	SIZE	GRADIENT	CHANGE	TIME	TIME	PRODUCTION
	103	70	33	0.0074	0.3771	30	11.313	1440	31.08353222
							0		

ROC# 13856  
LOC 3989

OST #1  
WILKON #1

CLOCK #8602

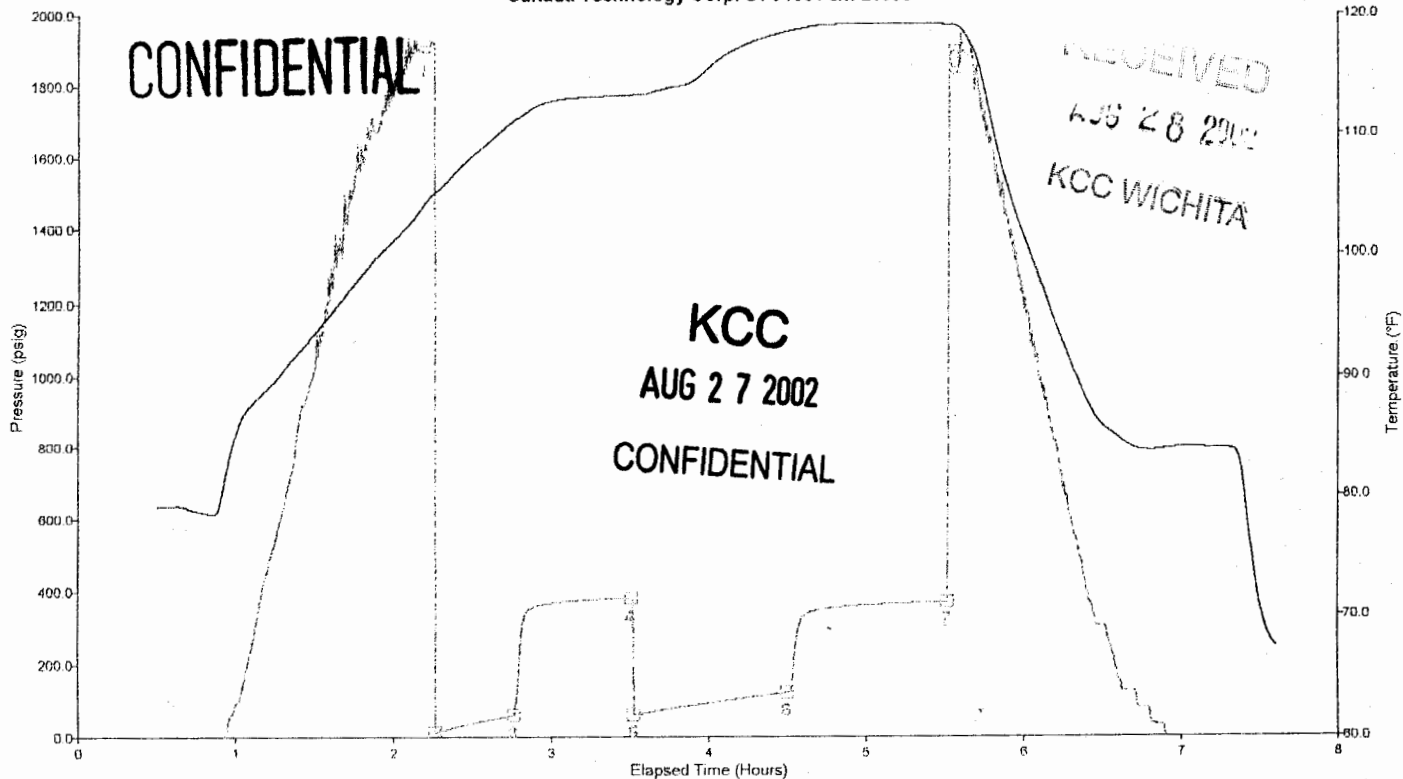


Well LSD: DST 1 LKC 'C' 3966-3992  
 Well Name: M WILKENS 1  
 Company: RITCHIE EXPLORATION INC  
 Battery on: May 21, 2002 at 16:26:00  
 Notes: REC. 300' GIP 170' CLEAN GASSY OIL 120 MUD+GAS CUT OIL

ORIGINAL

Sunada Technology Corp. STC4064 s/n 21098

Pressure — Temperature



Tag Pressure Temperature Comment

1	1897.97 psig	104.17 °F	2002-05-21 18:37:30
2	12.89 psig	105.20 °F	2002-05-21 18:42:00
3	59.02 psig	111.22 °F	2002-05-21 19:12:00
4	383.20 psig	113.29 °F	2002-05-21 19:56:30
5	61.10 psig	113.29 °F	2002-05-21 19:57:30
6	122.38 psig	118.67 °F	2002-05-21 20:56:00
7	372.15 psig	119.19 °F	2002-05-21 21:57:00
8	1896.96 psig	119.13 °F	2002-05-21 22:00:00



DIAMOND TESTING

P.O. Box 157

HOISINGTON, KANSAS 67544

(620) 653-7550 • (800) 542-7313

RECEIVED

AUG 28 2002

KCC WICHITA

Page 1 of 2 Pages

CONFIDENTIAL

ORIGINAL

Company Ritchie Exploration, Inc. Lease & Well No. M. Wilkens No. 4

Elevation 2882 KB Formation Lansing/Kansas City ('E' & 'F' Zones) Effective Pay -- Ft. Ticket No. J1248

Date 5-22-02 Sec. 5 Twp. 17S Range 30W County Lane State Kansas

Test Approved By Kim B. Shoemaker Diamond Representative John C. Riedl

Formation Test No. 2 Interval Tested from 4,036 ft. to 4,054 ft. Total Depth 4,054 ft.

Packer Depth 4,031 ft. Size 6 3/4 in. Packer Depth -- ft. Size -- in.

Packer Depth 4,036 ft. Size 6 3/4 in. Packer Depth -- ft. Size -- in.

Depth of Selective Zone Set -- ft.

Top Recorder Depth (Inside) 4,039 ft. Recorder Number Elec. Cap. 5,000 psi

Bottom Recorder Depth (Outside) 4,051 ft. Recorder Number 13556 Cap. 5,475 psi

Below Straddle Recorder Depth -- ft. Recorder Number -- Cap. -- psi

Drilling Contractor L. D. Drilling, Inc. - Rig 1 Drill Collar Length -- ft. I.D. -- in.

Mud Type Chemical Viscosity 45 Weight Pipe Length -- ft. I.D. -- in.

Weight 9.2 Water Loss 10.0 cc. Drill Pipe Length 4,016 ft. I.D. 3 1/2 in.

Chlorides 3,000 P.P.M. Test Tool Length 20 ft. Tool Size 3 1/2 - IF in.

Jars: Make Bowen Serial Number Not Run Anchor Length 18 ft. Size 4 1/2 - FH in.

Did Well Flow? No Reversed Out No Surface Choke Size 1 in. Bottom Choke Size 5/8 in.

Main Hole Size 7 7/8 in. Tool Joint Size 4 1/2 - XH in.

Blow: 1st Open: Weak blow. Dead in 22 mins.

2nd Open: No blow.

Recovered 5 ft. of oil specked mud = .051300 bbls.

Recovered -- ft. of

Recovered -- ft. of

Recovered -- ft. of

Recovered -- ft. of

Remarks

KCC

AUG 27 2002

CONFIDENTIAL

Time Set Packer(s) 11:16 A.M. Time Started Off Bottom 1:16 P.M. Maximum Temperature 110°

Initial Hydrostatic Pressure (A) 1941 P.S.I.

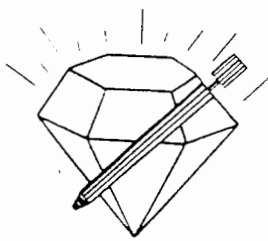
Initial Flow Period Minutes 30 (B) 9 P.S.I. to (C) 12 P.S.I.

Initial Closed In Period Minutes 30 (D) 788 P.S.I.

Final Flow Period Minutes 30 (E) 11 P.S.I. to (F) 12 P.S.I.

Final Closed In Period Minutes 30 (G) 785 P.S.I.

Final Hydrostatic Pressure (H) 1932 P.S.I.



**DIAMOND TESTING**  
P.O. Box 157  
**HOISINGTON, KANSAS 67544**  
(620) 653-7550 • (800) 542-7313

**FLUID SAMPLE DATA**

Company Ritchie Exploration, Inc.  
Lease & Well No. M. Wilkens No. 1  
Date 5-22-02 Sec. 5 Twp. 17 S Range 30 W  
Formation Test No. 2 Interval Tested From 4,036 ft. to 4,054 ft. Total Depth 4,054 ft.  
Formation Lansing/Kansas City ("E" & "F" Zones)

	<u>MUD PIT</u>	<u>RECOVERY</u>
Viscosity	<u>45</u> CP	<u>41</u> CP
Weight	<u>9.2</u>	<u>9.0</u>
Water Loss	<u>10.0</u> CC	<u>11.0</u> CC
PH Factor	<u>10.0</u>	<u>9.5</u>

	RESISTIVITY	CHLORIDE CONTENT
Recovery Water	<u>--</u> @ <u>--</u> °F.	<u>--</u> ppm
Recovery Mud	<u>1.90</u> @ <u>70</u> °F.	<u>3,300</u> ppm
Recovery Mud Filtrate	<u>1.90</u> @ <u>70</u> °F.	<u>3,300</u> ppm
Mud Pit Sample	<u>2.00</u> @ <u>75</u> °F.	<u>3,100</u> ppm
Mud Pit Sample Filtrate	<u>2.00</u> @ <u>75</u> °F.	<u>3,100</u> ppm

Sample Taken By JOHN C. RIEDL

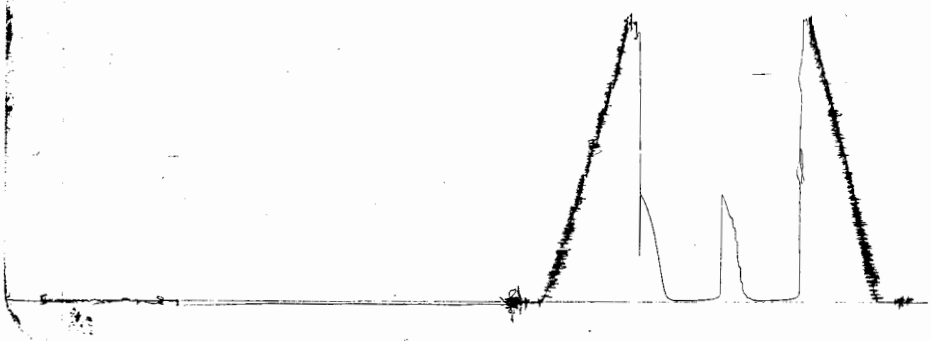
Witness By Kim B. Shoemaker

Remarks Pit filtrate triton dish chlorides were 3,000 Ppm.  
Recovery filtrate triton dish chlorides were 3,200 Ppm.

RSC#13556 OUTSIDE  
206 4051

DST #2  
WILKINS #)

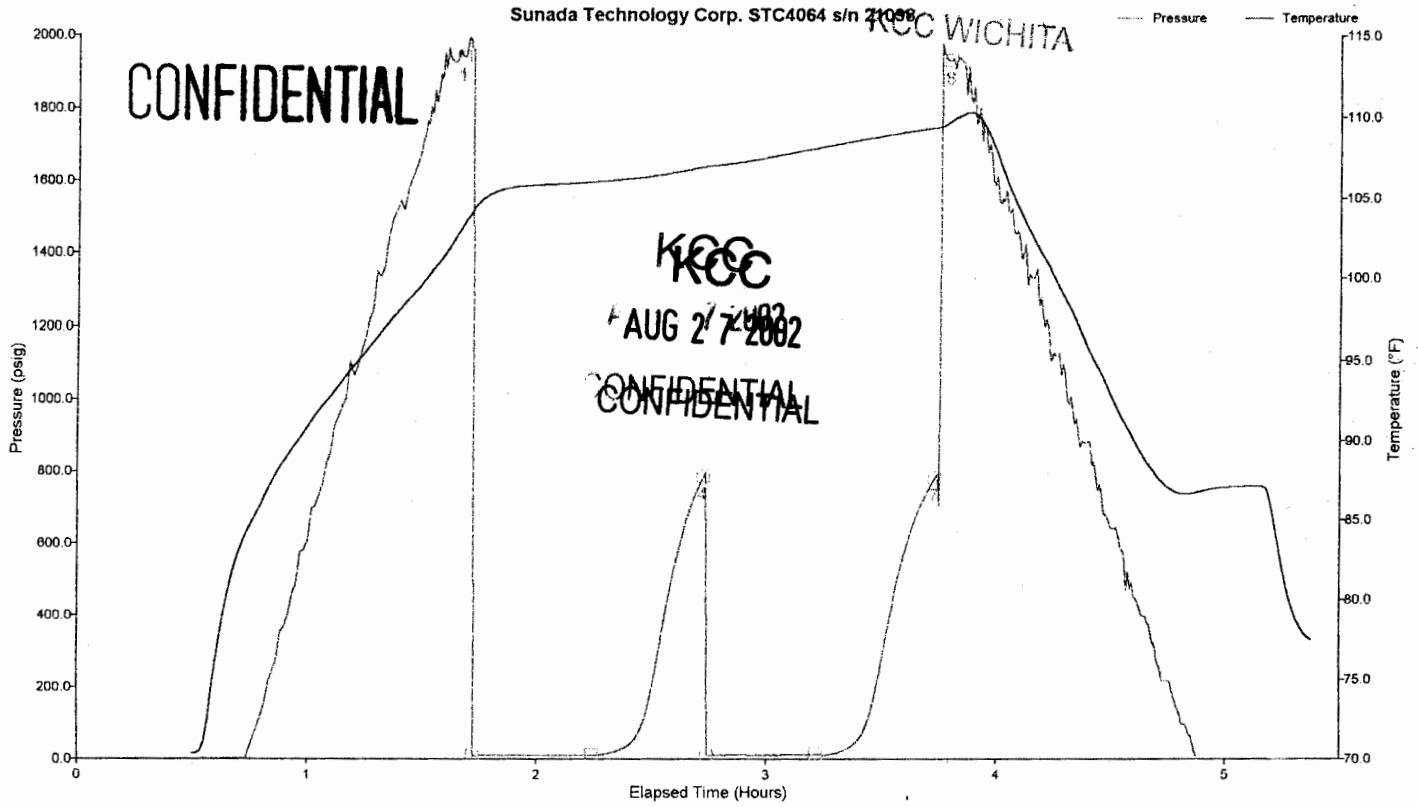
CLOCK 26703



Well LSD: DST 1 LKC E/F ZONES  
 Well Name: M WILKENS 1  
 Company: RITCHIE EXPLORATION INC  
 Battery on: May 22, 2002 at 09:32:00  
 Notes: REC. 5' OIL SPKED MUD

RECEIVED  
 AUG 28 2002

ORIGINAL



Tag	Pressure	Temperature	Comment
1	1941.22 psig	103.24 °F	2002-05-22 11:12:30
2	8.68 psig	104.36 °F	2002-05-22 11:15:30
3	11.47 psig	105.96 °F	2002-05-22 11:46:30
4	788.40 psig	106.92 °F	2002-05-22 12:15:30
5	10.63 psig	106.96 °F	2002-05-22 12:16:30
6	11.96 psig	108.09 °F	2002-05-22 12:45:00
7	784.68 psig	109.36 °F	2002-05-22 13:16:00
8	1932.00 psig	109.75 °F	2002-05-22 13:20:00



CONFIDENTIAL

DIAMOND TESTING

P.O. Box 157
HOISINGTON, KANSAS 67544
(620) 653-7550 • (800) 542-7313

RECEIVED

AUG 28 2002

KCC WICHITA

Page 1 of 2 Pages

ORIGINAL

Company Ritchie Exploration, Inc. Lease & Well No. M. Wilkens No. 1

Elevation 2882 KB Formation Lansing/Kansas City ("H", "I" & "J" Zones) Ticket No. J1249

Date 5-23-02 Sec. 5 Twp. 17S Range 30W County Lane State Kansas

Test Approved By Kim B. Shoemaker Diamond Representative John C. Riedl

Formation Test No. 3 Interval Tested from 4,114 ft. to 4,200 ft. Total Depth 4,200 ft.

Packer Depth 4,109 ft. Size 6 3/4 in. Packer Depth -- ft. Size -- in.

Packer Depth 4,114 ft. Size 6 3/4 in. Packer Depth -- ft. Size -- in.

Depth of Selective Zone Set ft.

Top Recorder Depth (Inside) 4,117 ft. Recorder Number Elec. Cap. 5,000 psi

Bottom Recorder Depth (Outside) 4,197 ft. Recorder Number 13556 Cap. 5,475 psi

Below Straddle Recorder Depth ft. Recorder Number Cap. psi

Drilling Contractor L. D. Drilling, Inc. - Rig 1 Drill Collar Length -- ft. I.D. -- in.

Mud Type Chemical Viscosity 48 Weight Pipe Length -- ft. I.D. -- in.

Weight 9.3 Water Loss 10.4 cc. Drill Pipe Length 4,094 ft. I.D. 3 1/2 in.

Chlorides 3,200 P.P.M. Test Tool Length 20 ft. Tool Size 3 1/2 - IF in.

Jars: Make Bowen Serial Number Not Run Anchor Length 86 ft. Size 4 1/2 - FH in.

Did Well Flow? No Reversed Out No Surface Choke Size 1 in. Bottom Choke Size 5/8 in.

Main Hole Size 7 7/8 in. Tool Joint Size 4 1/2 - XH in.

Blow: 1st Open: Strong blow. Off bottom of bucket in 19 mins. No blow back during shut-in.

2nd Open: Strong blow. Off bottom of bucket in 34 mins. No blow back during shut-in.

Recovered 60 ft. of gas in pipe

Recovered 120 ft. of slightly oil & gas cut watery mud = 1.231200 bbls. (Grind out: 5%-oil; 3%-gas; 20%-water; 72%-mud)

Recovered 120 ft. of very slightly oil & gas cut watery mud = 1.231200 bbls. (Grind out: 2%-oil; 3%-gas; 35%-water;

Recovered 120 ft. of very slightly oil cut muddy water = 1.231200 bbls. (Grind out: 1%-oil; 45%-mud; 54%-water) 60%-mud)

Recovered 360 ft. of TOTAL FLUID = 3.693600 bbls.

KCC

Remarks

AUG 27 2002

CONFIDENTIAL

Time Set Packer(s) 6:08 A.M. Time Started Off Bottom 9:08 A.M. Maximum Temperature 119°

Initial Hydrostatic Pressure (A) 2018 P.S.I.

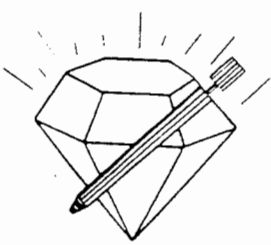
Initial Flow Period Minutes 30 (B) 17 P.S.I. to (C) 97 P.S.I.

Initial Closed In Period Minutes 45 (D) 946 P.S.I.

Final Flow Period Minutes 45 (E) 100 P.S.I. to (F) 181 P.S.I.

Final Closed In Period Minutes 60 (G) 898 P.S.I.

Final Hydrostatic Pressure (H) 2008 P.S.I.



**DIAMOND TESTING**  
P.O. Box 157  
**HOISINGTON, KANSAS 67544**  
(620) 653-7550 • (800) 542-7313

**FLUID SAMPLE DATA**

Company Ritchie Exploration, Inc.  
Lease & Well No. M. Wilkens No. 1  
Date 5-23-02 Sec. 5 Twp. 17 S Range 30 W  
Formation Test No. 3 Interval Tested From 4,114 ft. to 4,200 ft. Total Depth 4,200 ft.  
Formation Lansing/Kansas City ("H", "I" & "J" Zones)

	<u>MUD PIT</u>	<u>RECOVERY</u>
Viscosity	<u>48</u> CP	<u>40</u> CP
Weight	<u>9.3</u>	<u>9.0</u>
Water Loss	<u>10.4</u> CC	<u>50</u> CC
PH Factor	<u>9.5</u>	<u>8.5</u>

	<u>RESISTIVITY</u>	<u>CHLORIDE CONTENT</u>
Recovery Water	<u>2.90</u> @ <u>70</u> °F.	<u>23,000</u> ppm
Recovery Mud	<u>--</u> @ <u>--</u> °F.	<u>--</u> ppm
Recovery Mud Filtrate	<u>3.60</u> @ <u>65</u> °F.	<u>20,000</u> ppm
Mud Pit Sample	<u>1.90</u> @ <u>70</u> °F.	<u>3,400</u> ppm
Mud Pit Sample Filtrate	<u>1.90</u> @ <u>70</u> °F.	<u>3,400</u> ppm

Sample Taken By JOHN C. RIEDL

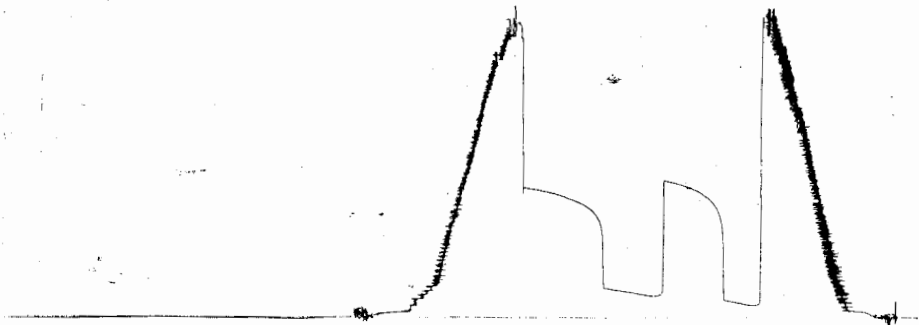
Witness By Kim B. Shoemaker

Remarks Pit filtrate triton dish chlorides were 3,200 Ppm.  
Recovery filtrate triton dish chlorides were 18,000 Ppm.  
Recovery water dish chlorides were 25,000 Ppm.

RDC #18884 LOG #197  
OUTSIDE

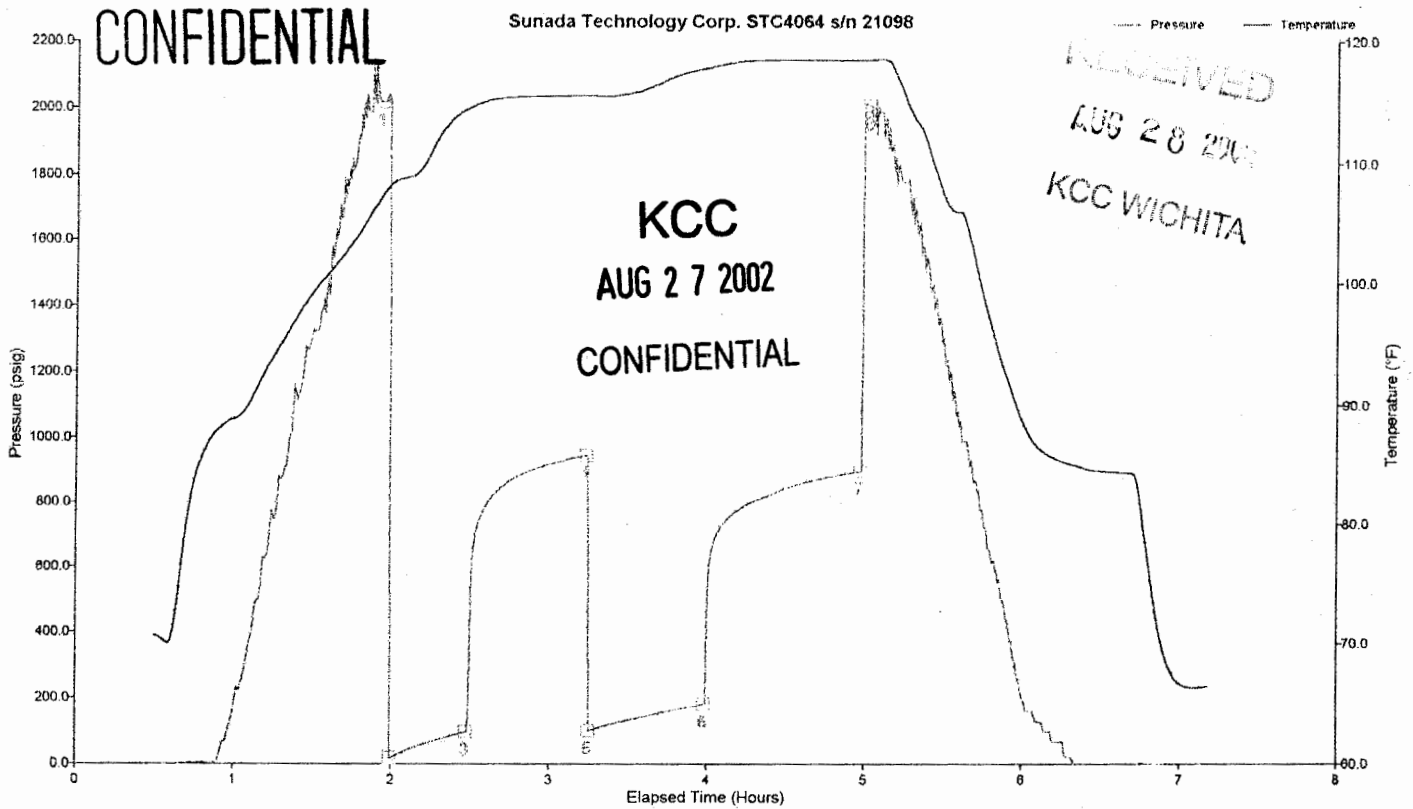
DST #3  
MWILKINS #1

CLOCK #26705



Well LSD: DST 3 LKC H, I, J ZONES  
 Well Name: M WILKENS 1  
 Company: RITCHIE EXPLORATION INC  
 Battery on: May 23, 2002 at 04:10:00  
 Notes: REC. 60' GIP 240' SL OIL+GAS CUT MUDDY WATER 120' MW

ORIGINAL



Tag	Pressure	Temperature	Comment
1	2017.77 psig	107.35 °F	2002-05-23 06:06:00
2	16.93 psig	108.32 °F	2002-05-23 06:09:30
3	96.78 psig	114.51 °F	2002-05-23 06:38:30
4	945.96 psig	115.60 °F	2002-05-23 07:24:00
5	100.48 psig	115.60 °F	2002-05-23 07:25:00
6	181.20 psig	117.85 °F	2002-05-23 08:09:00
7	897.68 psig	118.52 °F	2002-05-23 09:08:30
8	2007.95 psig	118.55 °F	2002-05-23 09:11:30



DIAMOND TESTING

P.O. Box 157
HOISINGTON, KANSAS 67544
(620) 653-7550 • (800) 542-7313

RECEIVED

AUG 28 2002

KCC WICHITA

Page 1 of 2 Pages

ORIGINAL

Company Ritchie Exploration, Inc. Lease & Well No. M. Wilkens No. 1

Elevation 2882 KB Formation Pleasanton/Pawnee Effective Pay -- Ft. Ticket No. J1250

Date 5-24-02 Sec. 5 Twp. 17S Range 30W County Lane State Kansas

Test Approved By Kim B. Shoemaker Diamond Representative John C. Riedl

Formation Test No. 4 Interval Tested from 4,310 ft. to 4,430 ft. Total Depth 4,430 ft.

Packer Depth 4,305ft. Size 6 3/4 in. Packer Depth -- ft. Size -- in.

Packer Depth 4,310ft. Size 6 3/4 in. Packer Depth -- ft. Size -- in.

Depth of Selective Zone Set -- ft.

Top Recorder Depth (Inside) 4,313ft. Recorder Number Elec. Cap. 5,000 psi

Bottom Recorder Depth (Outside) 4,427ft. Recorder Number 13556 Cap. 5,475 psi

Below Straddle Recorder Depth -- ft. Recorder Number -- Cap. -- psi

Drilling Contractor L. D. Drilling, Inc. - Rig 1 Drill Collar Length -- ft. I.D. -- in.

Mud Type Chemical Viscosity 45 Weight Pipe Length -- ft. I.D. -- in.

Weight 9.3 Water Loss 9.6 cc. Drill Pipe Length 4,290 ft. I.D. 3 1/2 in.

Chlorides 2,500 P.P.M. Test Tool Length 20 ft. Tool Size 3 1/2 - IF in.

Jars: Make Bowen Serial Number Not Run Anchor Length 120 ft. Size 4 1/2 - FH in.

Did Well Flow? No Reversed Out No Surface Choke Size 1 in. Bottom Choke Size 5/8 in.

Main Hole Size 7 7/8 in. Tool Joint Size 4 1/2 - XH in.

Blow: 1st Open: Weak, 3/4 in., blow.

2nd Open: Very weak blow. Dead in 15 mins.

Recovered 8 ft. of oil specked mud = .082080 bbls.

Recovered -- ft. of

Recovered -- ft. of

Recovered -- ft. of

Recovered -- ft. of

Remarks

KCC

AUG 27 2002

CONFIDENTIAL

Time Set Packer(s) 11:25 A.M. Time Started Off Bottom 1:25 P.M. Maximum Temperature 114°

Initial Hydrostatic Pressure (A) 2096 P.S.I.

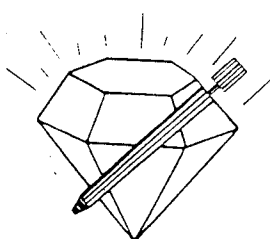
Initial Flow Period Minutes 30 (B) 12 P.S.I. to (C) 12 P.S.I.

Initial Closed In Period Minutes 30 (D) 236 P.S.I.

Final Flow Period Minutes 30 (E) 14 P.S.I. to (F) 15 P.S.I.

Final Closed In Period Minutes 30 (G) 81 P.S.I.

Final Hydrostatic Pressure (H) 2089 P.S.I.



**DIAMOND TESTING**  
P.O. Box 157  
**HOISINGTON, KANSAS 67544**  
(620) 653-7550 • (800) 542-7313

**FLUID SAMPLE DATA**

Company Ritchie Exploration, Inc.  
Lease & Well No. M. Wilkens No. 1  
Date 5-24-02 Sec. 5 Twp. 17 S Range 30 W  
Formation Test No. 4 Interval Tested From 4,310 ft. to 4,430 ft. Total Depth 4,430 ft.  
Formation Pleasanton/Pawnee

	MUD PIT	RECOVERY
Viscosity	<u>45</u> CP	<u>48</u> CP
Weight	<u>9.3</u>	<u>9.2</u>
Water Loss	<u>9.6</u> CC	<u>10.0</u> CC
PH Factor	<u>10.0</u>	<u>10.0</u>

	RESISTIVITY	CHLORIDE CONTENT
Recovery Water	<u>--</u> @ <u>--</u> °F.	<u>--</u> ppm
Recovery Mud	<u>2.10</u> @ <u>70</u> °F.	<u>3,100</u> ppm
Recovery Mud Filtrate	<u>2.10</u> @ <u>70</u> °F.	<u>3,100</u> ppm
Mud Pit Sample	<u>2.50</u> @ <u>60</u> °F.	<u>3,000</u> ppm
Mud Pit Sample Filtrate	<u>2.50</u> @ <u>60</u> °F.	<u>3,000</u> ppm

Sample Taken By JOHN C. RIEDL

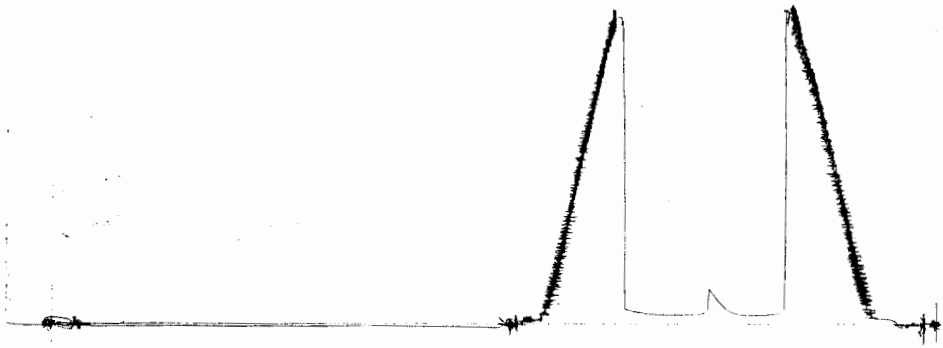
Witness By Kim B. Shoemaker

Remarks Pit filtrate triton dish chlorides were 2,500 Ppm.  
Recovery filtrate triton dish chlorides were 3,000 Ppm.

ROC #1354 905100  
LOC #447

DST #4  
MUSICOMTS #1

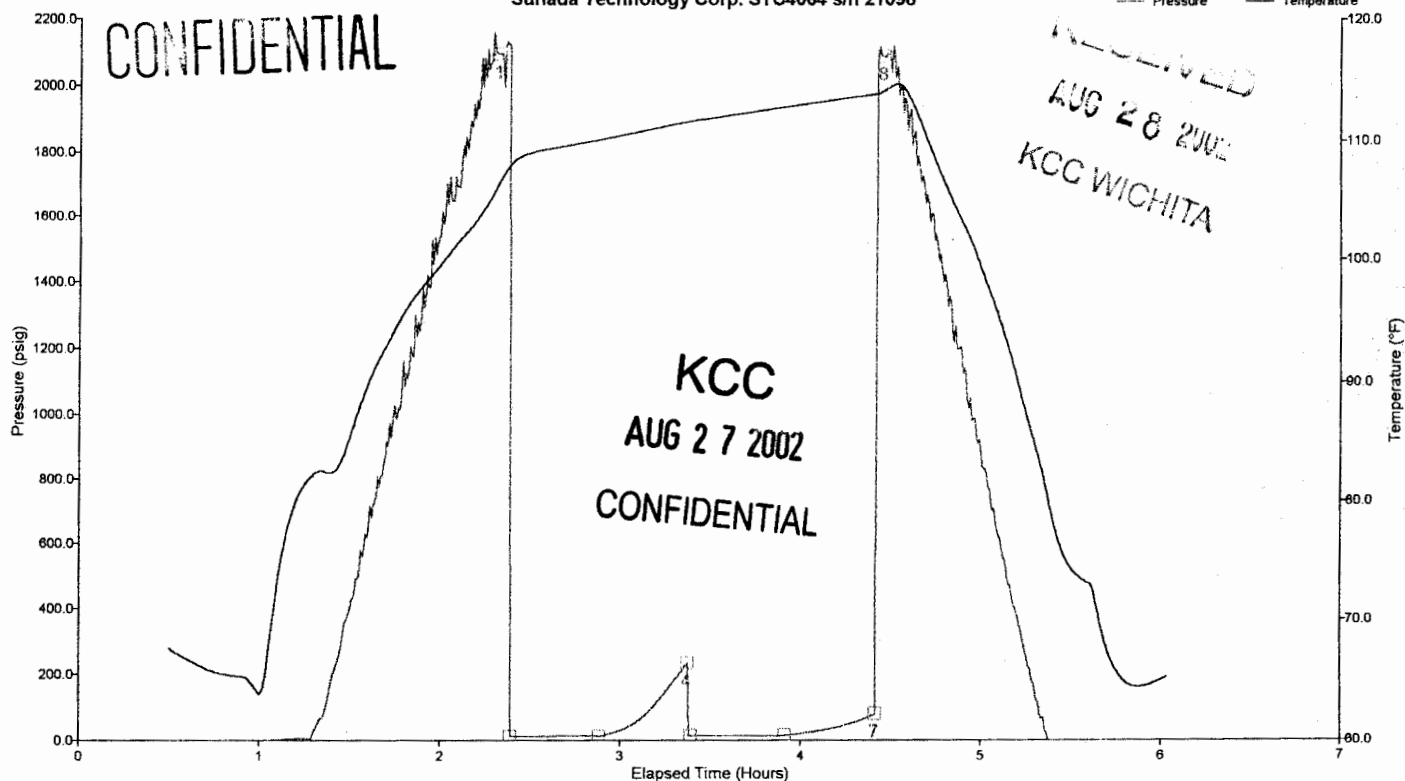
CLOCK #22708



Well LSD: DST 4 PLEASANTON' PAWNEE  
 Well Name: M WILKENS 1  
 Company: RITCHIE EXPLORATION INC  
 Battery on: May 24, 2002 at 09:02:00  
 Notes: RECOVERY 8' OIL SPKED MUD

ORIGINAL

Sunada Technology Corp. STC4064 s/n 21098



Tag	Pressure	Temperature	Comment
1	2095.94 psig	106.51 °F	2002-05-24 11:21:30
2	11.59 psig	108.11 °F	2002-05-24 11:25:30
3	12.31 psig	110.16 °F	2002-05-24 11:55:00
4	235.92 psig	111.63 °F	2002-05-24 12:24:30
5	13.86 psig	111.68 °F	2002-05-24 12:25:30
6	14.83 psig	112.85 °F	2002-05-24 12:57:00
7	80.70 psig	113.91 °F	2002-05-24 13:27:00
8	2089.02 psig	114.18 °F	2002-05-24 13:29:30



DIAMOND TESTING

P.O. Box 157

HOISINGTON, KANSAS 67544

(320) 653-7550 • (800) 542-7313

RECEIVED

AUG 28 2002

KCC WICHITA

Page 1 of 2 Pages

ORIGINAL

CONFIDENTIAL

Company Ritchie Exploration, Inc. Lease & Well No. M. Wilkens No. 1

Elevation 2882 KB Formation Myrick Station/Johnson Effective Pay -- Ft. Ticket No. J1251

Date 5-25-02 Sec. 5 Twp. 17S Range 30W County Lane State Kansas

Test Approved By Kim B. Shoemaker Diamond Representative John C. Riedl

Formation Test No. 5 Interval Tested from 4,425 ft. to 4,545 ft. Total Depth 4,545 ft.

Packer Depth 4,420 ft. Size 6 3/4 in. Packer Depth -- ft. Size -- in.

Packer Depth 4,425 ft. Size 6 3/4 in. Packer Depth -- ft. Size -- in.

Depth of Selective Zone Set -- ft.

Top Recorder Depth (Inside) 4,428 ft. Recorder Number Elec. Cap. 5,000 psi

Bottom Recorder Depth (Outside) 4,542 ft. Recorder Number 13556 Cap. 5,475 psi

Below Straddle Recorder Depth -- ft. Recorder Number -- Cap. -- psi

Drilling Contractor L. D. Drilling, Inc. - Rig 1 Drill Collar Length -- ft. I.D. -- in.

Mud Type Chemical Viscosity 48 Weight Pipe Length -- ft. I.D. -- in.

Weight 9.3 Water Loss 10.0 cc. Drill Pipe Length 4,405 ft. I.D. 3 1/2 in.

Chlorides 3,500 P.P.M. Test Tool Length 20 ft. Tool Size 3 1/2 - IF in.

Jars: Make Bowen Serial Number Not Run Anchor Length 120 ft. Size 4 1/2 - FH in.

Did Well Flow? No Reversed Out No Surface Choke Size 1 in. Bottom Choke Size 5/8 in.

Main Hole Size 7 7/8 in. Tool Joint Size 4 1/2 - XH in.

Blow: 1st Open: Strong blow. Building throughout to 8 ins. by end. No blow back during shut-in.

2nd Open: Strong blow. Building throughout to 9 ins. by end. No blow back during shut-in.

Recovered 270 ft. of gas in pipe

Recovered 95 ft. of oil & gas cut mud = .974700 bbls. (Grind out: 35%-oil; 25%-gas; 40%-mud)

Recovered 95 ft. of TOTAL FLUID = .974700 bbls.

Recovered -- ft. of

Recovered -- ft. of

Remarks

KCC

AUG 27 2002

CONFIDENTIAL

Time Set Packer(s) 5:35 A.M. Time Started Off Bottom 8:35 A.M. Maximum Temperature 117°

Initial Hydrostatic Pressure (A) 2163 P.S.I.

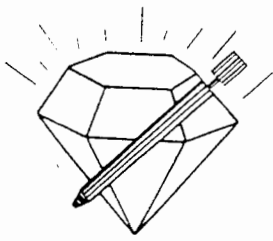
Initial Flow Period Minutes 30 (B) 13 P.S.I. to (C) 32 P.S.I.

Initial Closed In Period Minutes 45 (D) 1000 P.S.I.

Final Flow Period Minutes 45 (E) 35 P.S.I. to (F) 58 P.S.I.

Final Closed In Period Minutes 60 (G) 957 P.S.I.

Final Hydrostatic Pressure (H) 2155 P.S.I.



**DIAMOND TESTING**  
P.O. Box 157  
**HOISINGTON, KANSAS 67544**  
(620) 653-7550 • (800) 542-7313

**FLUID SAMPLE DATA**

Company Ritchie Exploration, Inc.  
Lease & Well No. M. Wilkens No. 1  
Date 5-25-02 Sec. 5 Twp. 17 S Range 30 W  
Formation Test No. 5 Interval Tested From 4,425 ft. to 4,545 ft. Total Depth 4,545 ft.  
Formation Myrick Station/Johnson

	<u>MUD PIT</u>	<u>RECOVERY</u>
Viscosity	<u>48</u> CP	<u>--</u> CP
Weight	<u>9.3</u>	<u>--</u>
Water Loss	<u>10.0</u> CC	<u>--</u> CC
PH Factor	<u>10.0</u>	<u>--</u>

	RESISTIVITY	CHLORIDE CONTENT
Recovery Water	<u>--</u> @ <u>--</u> °F.	<u>--</u> ppm
Recovery Mud	<u>1.90</u> @ <u>70</u> °F.	<u>3,400</u> ppm
Recovery Mud Filtrate	<u>1.80</u> @ <u>70</u> °F.	<u>3,600</u> ppm
Mud Pit Sample	<u>2.20</u> @ <u>60</u> °F.	<u>3,300</u> ppm
Mud Pit Sample Filtrate	<u>2.20</u> @ <u>60</u> °F.	<u>3,300</u> ppm

Sample Taken By JOHN C. RIEDL

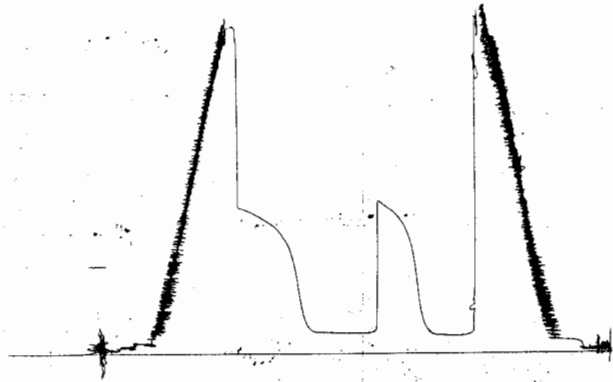
Witness By Kim B. Shoemaker

Remarks Pit filtrate triton dish chlorides were 3,500 Ppm.  
Recovery filtrate triton dish chlorides were 3,300 Ppm.

RFC #13556 OUTLINE  
LOC 4542

DST # 5  
M WILKINS

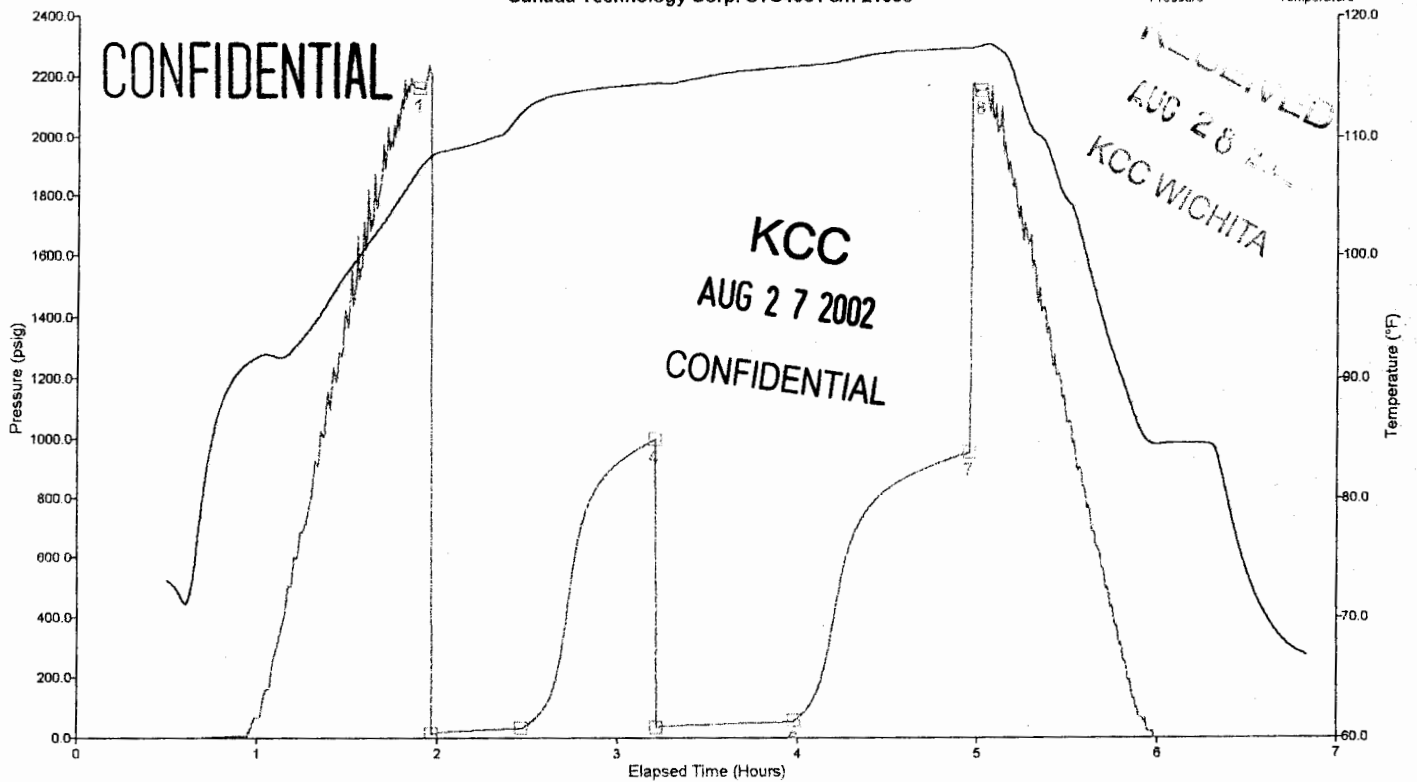
CLOCK # 26705



Well LSD: DST 5 MYRICK ST/JOHNSON ZONES 4425-4545  
 Well Name: M WILKENS 1  
 Company: RITCHIE EXPLORATION INC  
 Battery on: May 25, 2002 at 04:37:00  
 Notes: RECOVERY 270'GIP 95' OIL+GAS CUT MUD

ORIGINAL

Sunada Technology Corp. STC4064 s/n 21098



Tag	Pressure	Temperature	Comment
1	2162.86 psig	107.38 °F	2002-05-25 06:30:30
2	13.13 psig	108.56 °F	2002-05-25 06:35:00
3	31.93 psig	112.19 °F	2002-05-25 07:05:00
4	1000.29 psig	114.48 °F	2002-05-25 07:49:30
5	35.09 psig	114.49 °F	2002-05-25 07:50:00
6	57.65 psig	115.87 °F	2002-05-25 08:36:00
7	956.64 psig	117.38 °F	2002-05-25 09:34:30
8	2155.40 psig	117.58 °F	2002-05-25 09:38:00



DIAMOND TESTING

P.O. Box 157  
HOISINGTON, KANSAS 67544  
(20) 653-7550 • (800) 542-7313

ORIGINAL

RECEIVED  
AUG 26 2002

KCC WICHITA

Company Ritchie Exploration, Inc. Lease & Well No. M. Wilkens No. 1  
Elevation 2882 KB Formation Atoka Sand Effective Pay -- Ft. Ticket No. J1252  
Date 5-25-02 Sec. 5 Twp. 17S Range 30W County Lane State Kansas  
Test Approved By Kim B. Shoemaker Diamond Representative John C. Riedl

Formation Test No. 6 Interval Tested from 4,539 ft. to 4,565 ft. Total Depth 4,565 ft.  
Packer Depth 4,534 ft. Size 6 3/4 in. Packer Depth -- ft. Size -- in.  
Packer Depth 4,539 ft. Size 6 3/4 in. Packer Depth -- ft. Size -- in.  
Depth of Selective Zone Set          ft.

Top Recorder Depth (Inside) 4,542 ft. Recorder Number Elec. Cap. 5,000 psi  
Bottom Recorder Depth (Outside) 4,562 ft. Recorder Number 13556 Cap. 5,475 psi  
Below Straddle Recorder Depth          ft. Recorder Number          Cap.          psi

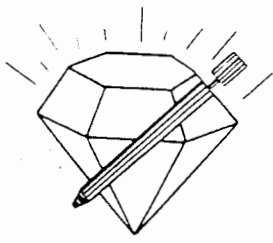
Drilling Contractor L. D. Drilling, Inc. - Rig 1 Drill Collar Length -- ft. I.D. -- in.  
Mud Type Chemical Viscosity 44 Weight Pipe Length -- ft. I.D. -- in.  
Weight 9.5 Water Loss 9.6 cc. Drill Pipe Length 4,519 ft. I.D. 3 1/2 in.  
Chlorides 3,000 P.P.M. Test Tool Length 20 ft. Tool Size 3 1/2 - IF in.  
Jars: Make Bowen Serial Number Not Run Anchor Length 26 ft. Size 4 1/2 - FH in.  
Did Well Flow? No Reversed Out No Surface Choke Size 1 in. Bottom Choke Size 5/8 in.  
Main Hole Size 7 7/8 in. Tool Joint Size 4 1/2 - XH in.

Blow: 1st Open: Weak blow. Dead in 20 mins.  
2nd Open: No blow.

Recovered 2 ft. of drilling mud with a good show of oil in tool = .020520 bbls.  
Recovered          ft. of           
Recovered          ft. of           
Recovered          ft. of           
Recovered          ft. of           
Remarks         

KCC  
AUG 27 2002  
CONFIDENTIAL

Time Set Packer(s) 5:45 <sup>A.M.</sup> P.M. Time Started Off Bottom 7:45 <sup>A.M.</sup> P.M. Maximum Temperature 117°  
Initial Hydrostatic Pressure ..... (A) 2282 P.S.I.  
Initial Flow Period ..... Minutes 30 (B) 10 P.S.I. to (C) 12 P.S.I.  
Initial Closed In Period ..... Minutes 30 (D) 149 P.S.I.  
Final Flow Period ..... Minutes 30 (E) 14 P.S.I. to (F) 13 P.S.I.  
Final Closed In Period ..... Minutes 30 (G) 76 P.S.I.  
Final Hydrostatic Pressure ..... (H) 2199 P.S.I.



**DIAMOND TESTING**  
P.O. Box 157  
**HOISINGTON, KANSAS 67544**  
(620) 653-7550 • (800) 542-7313

**FLUID SAMPLE DATA**

Company Ritchie Exploration, Inc.  
Lease & Well No. M. Wilkens No. 1  
Date 5-25-02 Sec. 5 Twp. 17 S Range 30 W  
Formation Test No. 6 Interval Tested From 4,539 ft. to 4,565 ft. Total Depth 4,565 ft.  
Formation Atoka Sand

	<u>MUD PIT</u>	<u>RECOVERY</u>
Viscosity	<u>44</u> CP	<u>47</u> CP
Weight	<u>9.5</u>	<u>9.3</u>
Water Loss	<u>9.6</u> CC	<u>10.0</u> CC
PH Factor	<u>10.0</u>	<u>10.0</u>

	<u>RESISTIVITY</u>		<u>CHLORIDE CONTENT</u>
Recovery Water	<u>--</u>	@ <u>--</u> °F.	<u>--</u> ppm
Recovery Mud	<u>1.60</u>	@ <u>75</u> °F.	<u>3,300</u> ppm
Recovery Mud Filtrate	<u>1.60</u>	@ <u>75</u> °F.	<u>3,000</u> ppm
Mud Pit Sample	<u>2.00</u>	@ <u>70</u> °F.	<u>3,000</u> ppm
Mud Pit Sample Filtrate	<u>2.00</u>	@ <u>70</u> °F.	<u>3,000</u> ppm

Sample Taken By JOHN C. RIEDL

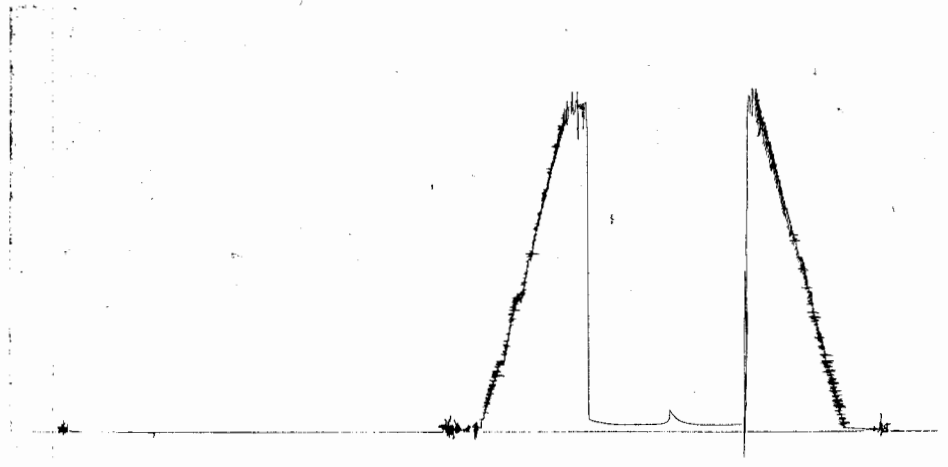
Witness By Kim B. Shoemaker

Remarks Pit filtrate triton dish chlorides were 3,000 Ppm.  
Recovery filtrate triton dish chlorides were 3,200 Ppm.

LOC # 138559 047500  
LOC # 138559

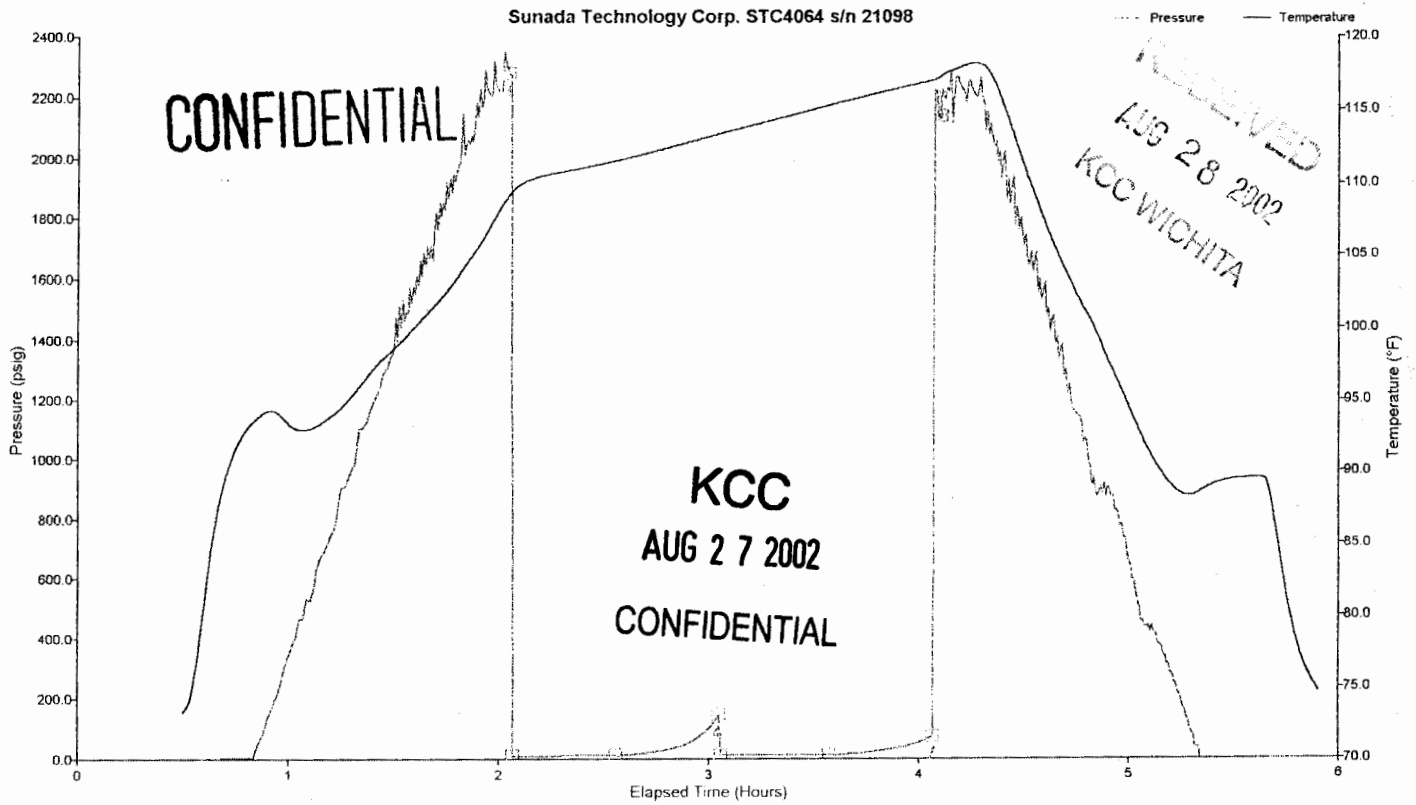
DSI-104  
M WICKONS

CCOCK # 26708



Well LSD: DST 6 ATOKA SAND 4539 4565  
 Well Name: M WILKENS 1  
 Company: RITCHIE EXPLORATION INC  
 Battery on: May 25, 2002 at 15:40:00  
 Notes: REC..2' DRILLING MUD FREE OIL IN TOOL

ORIGINAL



Tag	Pressure	Temperature	Comment
1	2282.01 psig	109.19 °F	2002-05-25 17:43:00
2	10.38 psig	109.48 °F	2002-05-25 17:44:00
3	12.24 psig	111.61 °F	2002-05-25 18:13:30
4	148.91 psig	113.42 °F	2002-05-25 18:43:00
5	13.96 psig	113.46 °F	2002-05-25 18:43:30
6	12.83 psig	115.38 °F	2002-05-25 19:14:30
7	76.28 psig	117.05 °F	2002-05-25 19:44:00
8	2199.46 psig	117.56 °F	2002-05-25 19:47:30