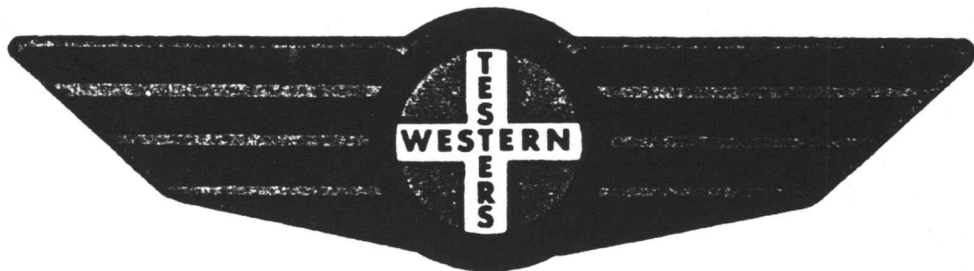


FORMATION TEST REPORT



Home Office:

Wichita, Kansas 67201

P.O. Box 1599

Phone (316) 262-5861

COMPANY RAINS & WILLIAMSON OIL CO., INC. LEASE & WELL NO. #1 JANSSEN SEC. 3 TWP. 17S RGE. 7W TEST NO. 1 DATE 10/30/85

WESTERN TESTING CO. INC.
SUBSURFACE PRESSURE SURVEY

DATE: 10-30-85
CUSTOMER: RAINS & WILLIAMSON OIL CO INC
WELL: 1 TEST: 1
ELEVATION (KB): 1674 FORMATION:
SECTION: 3 TOWNSHIP: 17S
RANGE: 7W COUNTY: ELLSWORTH STATE: KANSAS
GAUGE SN #10270 RANGE: 4150 CLOCK: 12

TICKET #9230
LEASE: JANSSEN
GEOLOGIST: M. ENGELBRECHT

INTERVAL TEST FROM: 3128 FT TO: 3160 FT TOTAL DEPTH: 3160 FT
DEPTH OF SELECTIVE ZONE: FT
PACKER DEPTH: 3123 FT SIZE: 6 5/8 IN PACKER DEPTH: 3128 FT SIZE: 6 5/8 IN
PACKER DEPTH: FT SIZE: IN PACKER DEPTH: FT SIZE: IN

DRILLING CONTRACTOR: RAINS/WILLIAMSON #9
MUD TYPE: STARCH VISCOSITY: 47
WEIGHT: 10 WATER LOSS (CC): 16
CHLORIDES (P.P.M.): 49000
JARS - MAKE: SERIAL NUMBER:
DID WELL FLOW? NO REVERSED OUT? NO
DRILL COLLAR LENGTH: 120 FT I.D.: 2.25 IN
WEIGHT PIPE LENGTH: FT I.D.: IN
DRILL PIPE LENGTH: 2986 FT I.D.: 3.8 IN
TEST TOOL LENGTH: 22 FT TOOL SIZE: 5 1/2 OD IN
ANCHOR LENGTH: 32 FT SIZE: 5 1/2 OD IN
SURFACE CHOKE SIZE: 3/4 IN BOTTOM CHOKE SIZE: 3/4 IN
MAIN HOLE SIZE: 7 7/8 IN TOOL JOINT SIZE: 4 1/2 XH IN

BLOW: INITIAL FLOW PERIOD VERY WEAK
BLOW; DIED IN 8 MINUTES.
FINAL FLOW PERIOD NO BLOW; FLUSHED TOOL.

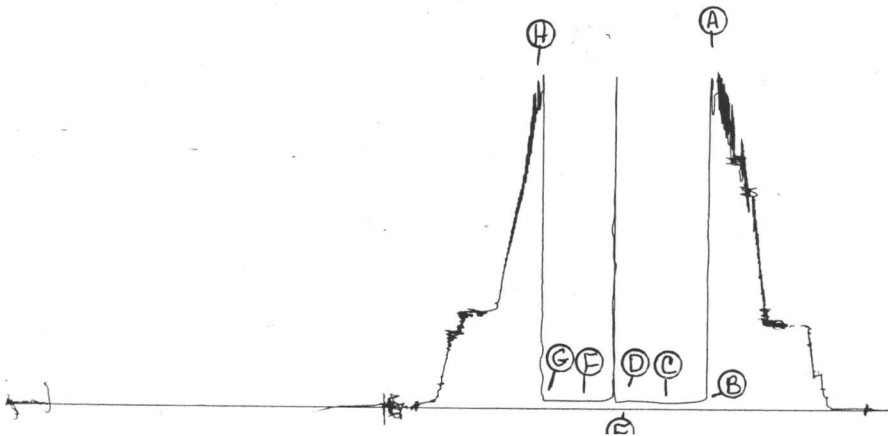
RECOVERED: 5 FT OF: MUD.
RECOVERED: FT OF:
RECOVERED: FT OF:
RECOVERED: FT OF:
RECOVERED: FT OF:
RECOVERED: FT OF:
RECOVERED: FT OF:
RECOVERED: FT OF:
RECOVERED: FT OF:

REMARKS:

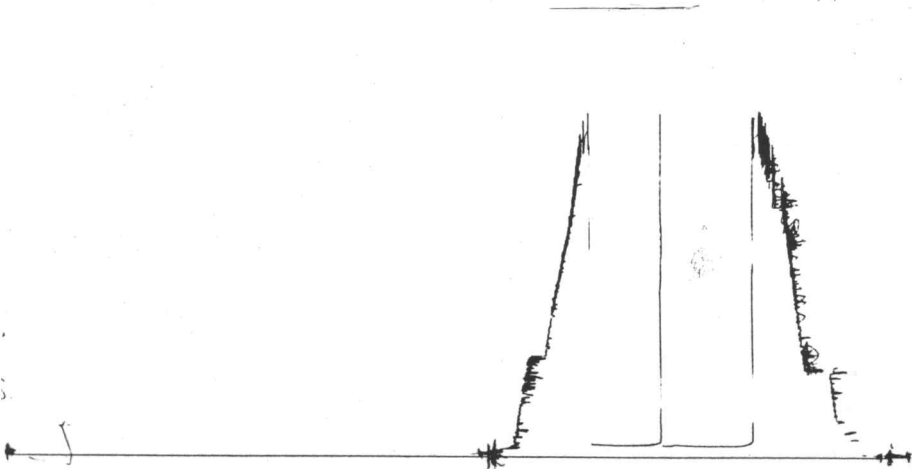
TIME SET PACKER(S): 12:35 PM
WELL TEMPERATURE: 103 °F
INITIAL HYDROSTATIC PRESSURE:
INITIAL FLOW PERIOD MIN: 30
INITIAL CLOSED IN PERIOD MIN: 30
FINAL FLOW PERIOD MIN: 30
FINAL CLOSED IN PERIOD MIN: 30
FINAL HYDROSTATIC PRESSURE

TIME STARTED OFF BOTTOM: 2:35 PM
(A) 1680 PSI
(B) 35 PSI TO (C) 35 PSI
(D) 50 PSI
(E) 41 PSI TO (F) 47 PSI
(G) 48 PSI
(H) 1678 PSI

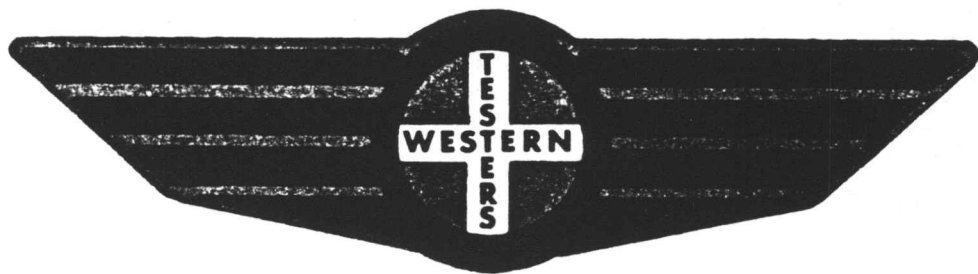
4.22. #9230
I



Ykt. # 9230
0



FORMATION TEST REPORT



Home Office:

Wichita, Kansas 67201

P.O. Box 1599

Phone (316) 262-5861

COMPANY RAINS & WILLIAMSON OIL CO., INC LEASE & WELL NO. #1 JANSSEN SEC. 3 TWP. 17S RGE. 7W TEST NO. 2 DATE 10/31/85

WESTERN TESTING CO. INC.
SUBSURFACE PRESSURE SURVEY

DATE: 10-31-85
CUSTOMER: RAINS & WILLIAMSON OIL CO INC
WELL: 1 TEST: 2
ELEVATION (KB): 1674 FORMATION:
SECTION: 3 TOWNSHIP: 17S
RANGE: 7W COUNTY: ELLSWORTH STATE: KANSAS
GAUGE SN #10270 RANGE: 4150 CLOCK: 12

TICKET #9231
LEASE: JANSSEN
GEOLOGIST: M. ENGELBRECHT

INTERVAL TEST FROM: 3304 FT TO: 3310 FT TOTAL DEPTH: 3310 FT
DEPTH OF SELECTIVE ZONE: FT
PACKER DEPTH: 3299 FT SIZE: 6 5/8 IN Packer DEPTH: 3304 FT SIZE: 6 5/8 IN
PACKER DEPTH: FT SIZE: IN Packer DEPTH: FT SIZE: IN

DRILLING CONTRACTOR: RAINS/WILLIAMSON #9
MUD TYPE: STARCH VISCOSITY: 53
WEIGHT: 10 WATER LOSS (CC): 13.6
CHLORIDES (P.P.M.): 50000

JARS - MAKE: SERIAL NUMBER:
DID WELL FLOW? NO REVERSED OUT? NO
DRILL COLLAR LENGTH: 120 FT I.D.: 2.25 IN
WEIGHT PIPE LENGTH: FT I.D.: IN
DRILL PIPE LENGTH: 3157 FT I.D.: 3.8 IN
TEST TOOL LENGTH: 27 FT TOOL SIZE: 5 1/2 OD IN
ANCHOR LENGTH: 6 FT SIZE: 5 1/2 OD IN
SURFACE CHOKE SIZE: 3/4 IN BOTTOM CHOKE SIZE: 3/4 IN
MAIN HOLE SIZE: 7 7/8 IN TOOL JOINT SIZE: 4 1/2 XH IN

BLOW: INITIAL FLOW PERIOD WEAK BLOW
THROUGHOUT; 1/4 INCH INCREASED TO
1 INCH BLOW. FINAL FLOW PERIOD
WEAK BLOW THROUGHOUT; 1/4 INCH BLOW.

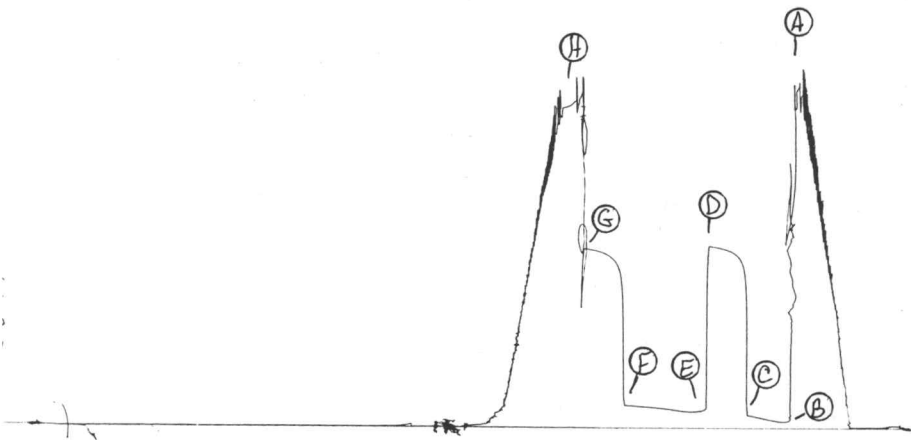
RECOVERED: 190 FT OF: MUDDY WATER.
RECOVERED: FT OF: CHLORIDES 90000 PPM.
RECOVERED: FT OF:
RECOVERED: FT OF:
RECOVERED: FT OF:
RECOVERED: FT OF:
RECOVERED: FT OF:
RECOVERED: FT OF:
RECOVERED: FT OF:
RECOVERED: FT OF:

REMARKS:

TIME SET PACKER(S): 8:10 PM TIME STARTED OFF BOTTOM: 10:40 PM
WELL TEMPERATURE: 106 °F
INITIAL HYDROSTATIC PRESSURE: (A) 1796 PSI
INITIAL FLOW PERIOD MIN: 30 (B) 34 PSI TO (C) 68 PSI
INITIAL CLOSED IN PERIOD MIN: 30 (D) 970 PSI
FINAL FLOW PERIOD MIN: 60 (E) 87 PSI TO (F) 121 PSI
FINAL CLOSED IN PERIOD MIN: 30 (G) 955 PSI
FINAL HYDROSTATIC PRESSURE (H) 1754 PSI

467. #9231

I



4267. #9231
0

