

# Superior Testers Enterprises, Inc.

R.R. 3, Box 295B, Great Bend, Kansas 67530

(316) 792-6902

115 1737

Date 1/25/06 Location 34-T185-R104 Elevation 1727 County Rice

Company Samuel Gary Number of Copies 5

Charts Mailed to 1670 Broadway Ste 3300 Denver, CO 80202

Drilling Contractor Summit Rig 1#

Length Drill Pipe 2670 I.D. Drill Pipe 3.0 Tool Joint Size 4.0

Length Weight Pipe \_\_\_\_\_ I.D. Weight Pipe \_\_\_\_\_ Tool Joint Size \_\_\_\_\_

Length Drill Collars 354 I.D. Drill Collars 2.25 Tool Joint Size L

Top Packer Depth 2930 Bottom Packer Depth 2935 Number of Packers 2 Packer Size 6.75

TESTED FROM 2935 TO 2965 ANCHOR LENGTH 30' TOTAL DEPTH 2965 Hole Size 7 1/4

LEASE & WELL NO. Zink 1-34 FORMATION TESTED Langering TEST NO. 1

Mud Weight 9.15 Viscosity 46 Water Loss 9.2 Chlorides - Pits 5,000 D.S.T. \_\_\_\_\_

Maximum Temp. 105 °F Initial Hydrostatic Pressure (A) 1377 P.S.I. Final Hydrostatic Pressure (H) 1379 P.S.I.

Tool Open I.F.P. from 7:05 p.m. to 7:25 p.m. 20 min

from [B] <u>694</u> P.S.I. to [C] <u>584</u> P.S.I.
[D] <u>1055</u> P.S.I.
from [E] <u>608</u> P.S.I. to [F] <u>583</u> P.S.I.
[G] <u>1077</u> P.S.I.

Tool Closed I.C.I.P. from 7:25 m to 8:25 m 60 min

Tool Open F.F.P. from 8:25 m to 9:10 m 45 min

Tool Closed F.C.I.P. from 9:10 m to 11:25 m 135 min

Initial Blow BOB 14 min

Final Blow 1706 3 min GTS as a D

Total Feet Recovered 1241 Gravity of Oil \_\_\_\_\_ Corrected

124 Feet of slightly gassy mud 5 % Gas 95 % Oil 95 % Mud \_\_\_\_\_ % Water

\_\_\_\_\_ Feet of \_\_\_\_\_ % Gas \_\_\_\_\_ % Oil \_\_\_\_\_ % Mud \_\_\_\_\_ % Water

\_\_\_\_\_ Feet of \_\_\_\_\_ % Gas \_\_\_\_\_ % Oil \_\_\_\_\_ % Mud \_\_\_\_\_ % Water

\_\_\_\_\_ Feet of \_\_\_\_\_ % Gas \_\_\_\_\_ % Oil \_\_\_\_\_ % Mud \_\_\_\_\_ % Water

\_\_\_\_\_ Feet of \_\_\_\_\_ % Gas \_\_\_\_\_ % Oil \_\_\_\_\_ % Mud \_\_\_\_\_ % Water

\_\_\_\_\_ Feet of \_\_\_\_\_ % Gas \_\_\_\_\_ % Oil \_\_\_\_\_ % Mud \_\_\_\_\_ % Water

\_\_\_\_\_ Feet of \_\_\_\_\_ % Gas \_\_\_\_\_ % Oil \_\_\_\_\_ % Mud \_\_\_\_\_ % Water

\_\_\_\_\_ Feet of \_\_\_\_\_ % Gas \_\_\_\_\_ % Oil \_\_\_\_\_ % Mud \_\_\_\_\_ % Water

Remarks Took a drink of mud at beginning of test

Extra Equipment - Jars  Safety Joint  Extra Packer \_\_\_\_\_ Straddle \_\_\_\_\_ Hook Wall \_\_\_\_\_

Top Recorder No. 4005 Clock No. etc Depth 2961 Cir. Sub \_\_\_\_\_ Sampler \_\_\_\_\_

Bottom Recorder No. 3875 Clock No. 3435 Depth 2962 Insurance \_\_\_\_\_

Price of Job \_\_\_\_\_

Tool Operator CG

Approved By \_\_\_\_\_

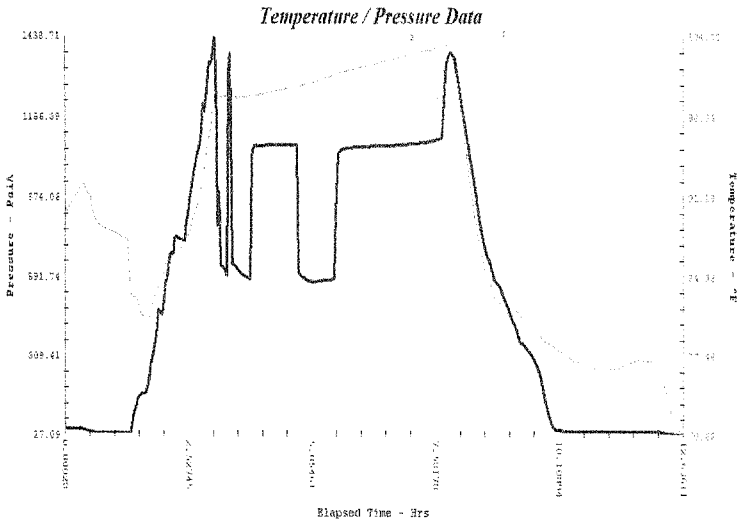
Superior Testers Enterprises, Inc. shall not be liable for damage of any kind to the property or personnel of the one for whom a test is made, of for any loss suffered or sustained, directly or indirectly, through the use of its equipment, or its statements or opinion concerning the results of any test. Tools lost or damaged in the hole shall be paid for at cost by the party for whom the test is made.

# SUPERIOR TESTERS ENTERPRISES L.L.C.

Company: **SAMUEL GARY** Lease & Well No. **Zink #1-34** Test #: **1** Date: **09-25-2006** SEC. **34TWP. 18S**  
**RGE. 10W**

## ST REPORT

GREAT-BEND, KANSAS 67530



- |   |                              |      |
|---|------------------------------|------|
| 1 | Initial Hydrostatic Pressure | 1377 |
| 2 | Initial Flow Pressure        | 634  |
| 3 | Final Initial Flow Pressure  | 584  |
| 4 | Initial Shut-In Pressure     | 1055 |
| 5 | Initial Final Flow Pressure  | 608  |
| 6 | Final Flow Pressure          | 583  |
| 7 | Final Shut-In Pressure       | 1077 |
| 8 | Final Hydrostatic Pressure   | 1339 |

Maximum Temperature 105

### GENERAL INFORMATION

COMPANY NAME ..... **SAMUEL GARY**

TEST DATE ..... **9/25/06**

LEASE AND WELL NUMBER ..... **ZINK 1-34**

SECTION-TOWN-RANGE ..... **34-18S-10W**

FORMATION TESTED ..... **LANSEING**

STATE ..... **KANSAS**

DRILL STEM TEST NUMBER ..... **1**

COUNTY ..... **RICE**

REPORT NUMBER ..... **14193**

ELEVATION GROUND LEVEL ..... **1727**

ELEVATION KELLY BUSHINGS ..... **1737**

COMPANY REPRESENTATIVE ..... **TOM FERTAL**

TESTING ENGINEER ..... **KEVIN WEBSTER**

### TOOL SETTING INFORMATION

TEST INTERVAL (From) ..... **2935**

TOP PACKER DEPTH ..... **2930**

TEST INTERVAL (to) ..... **2965**

BOTTOM PACKER DEPTH ..... **2935**

ANCHOR LENGTH ..... **30**

NUMBER OF PACKERS ..... **2**

TOTAL DEPTH (ft) ..... **2965**

PACKER SIZE ..... **6 3/4**

HOLE SIZE ..... **7 7/8**

### FLOW TIMES

TOOL OPEN (from) ..... **7:05**

TOOL OPEN (from) ..... **8:25**

INITIAL OPEN TOOL OPEN (to) ..... **7:25**

FINAL OPEN TOOL OPEN (to) ..... **9:10**

DURATION (min.) ..... **20**

DURATION (min.) ..... **45**

TOOL CLOSED (from) ..... **7:25**

TOOL CLOSED (from) ..... **9:10**

INITIAL SHUT-IN TOOL CLOSED (to) ..... **8:25**

FINAL SHUT-IN TOOL CLOSED (to) ..... **11:25**

DURATION (min.) ..... **60**

DURATION (min.) ..... **135**

INITIAL FLOW **BOB 14 MIN**

FINAL FLOW **BOB 3 MIN GTS ASAO**

Feet of Recovery	RESISTIVITY	AT	DEGREES	CHLORIDES			
	RECOVERY DESCRIPTION			% GAS	% OIL	% MUD	% WATER
1) 1241	slightly gassy mud			5		95	
2)							
3)							
4)							
5)							

# SUPERIOR TESTERS ENTERPRISES L.L.C.

## DRILL STEM TEST REPORT

GREAT BEND ,KANSAS 67530 (800)792-6902

### GENERAL INFORMATION

COMPANY NAME .....	<b>SAMUEL GARY</b>	LEASE AND WELL NUMBER .....	<b>ZINK 1-34</b>
TEST DATE .....	<b>9/25/06</b>	FORMATION TESTED .....	<b>LANSEING</b>
SECTION-TOWN-RANGE .....	<b>34-18S-10W</b>	DRILL STEM TEST NUMBER .....	<b>1</b>
STATE .....	<b>KANSAS</b>	REPORT NUMBER .....	<b>14193</b>
COUNTY .....	<b>RICE</b>	ELEVATION KELLY BUSHINGS .....	<b>1737</b>
ELEVATION GROUND LEVEL .....	<b>1727</b>	TESTING ENGINEER .....	<b>KEVIN WEBSTER</b>
COMPANY REPRESENTATIVE .....	<b>TOM FERTAL</b>		

### EXTRA EQUIPMENT

JARS .....	<b>YES</b>	EXTRA PACKER (3RD) .....	<b>NO</b>
SAFETY JOINT .....	<b>YES</b>	EXTRA PACKER (4TH) .....	<b>NO</b>
ELECTRONIC RECORDER .....	<b>YES</b>	STRADDLE .....	<b>NO</b>
CIRCULATING SUB .....	<b>NO</b>	HOOK WALL .....	<b>NO</b>
	<b>70 MILES ROUND TRIP FROM</b>	SAMPLER .....	<b>NO</b>
	<b>GREAT BEND</b>		
TOP RECORDER DEPTH .....	<b>2961</b>	BOTTOM RECORDER DEPTH .....	<b>2962</b>
RECORDER NUMBER .....	<b>4005</b>	RECORDER NUMBER .....	<b>7875</b>

### WELL INFORMATION

DRILLING CONTRACTOR .....	<b>SUMMIT RIG#1</b>		
DRILL PIPE LENGTH .....	<b>2630</b>	DRILL COLLAR LENGTH .....	<b>354</b>
DRILL PIPE I.D. ....	<b>3.8</b>	DRILL COLLAR I.D. ....	<b>2.25</b>
TOOL JOINT SIZE .....	<b>4 1/2 X.H.</b>	TOOL JOINT SIZE .....	<b>4 1/2 X.H.</b>
WEIGHT PIPE LENGTH .....	<b>0</b>	MUD WEIGHT #/GAL .....	<b>9.15</b>
WEIGHT PIPE I.D. ....	<b>2.25</b>	VISCOSITY .....	<b>46</b>
TOOL JOINT SIZE .....	<b>4 1/2 X.H.</b>	WATER LOSS .....	<b>9.2</b>
		CHLORIDES-PITS .....	<b>5000</b>
		CHLORIDES-DST .....	

### COMMENTS

**SUPERIOR TESTERS ENTERPRISES L.L.C.**

GREAT BEND, KANSAS

**GAS FLOW RATE**

(800) 792-6902

#

STATE.....	KANSAS	Test Date .....	1/0/1900
COUNTY.....	RICE	Sec Town Range .....	34-18S-10W
FIELD.....		Report Number .....	14193

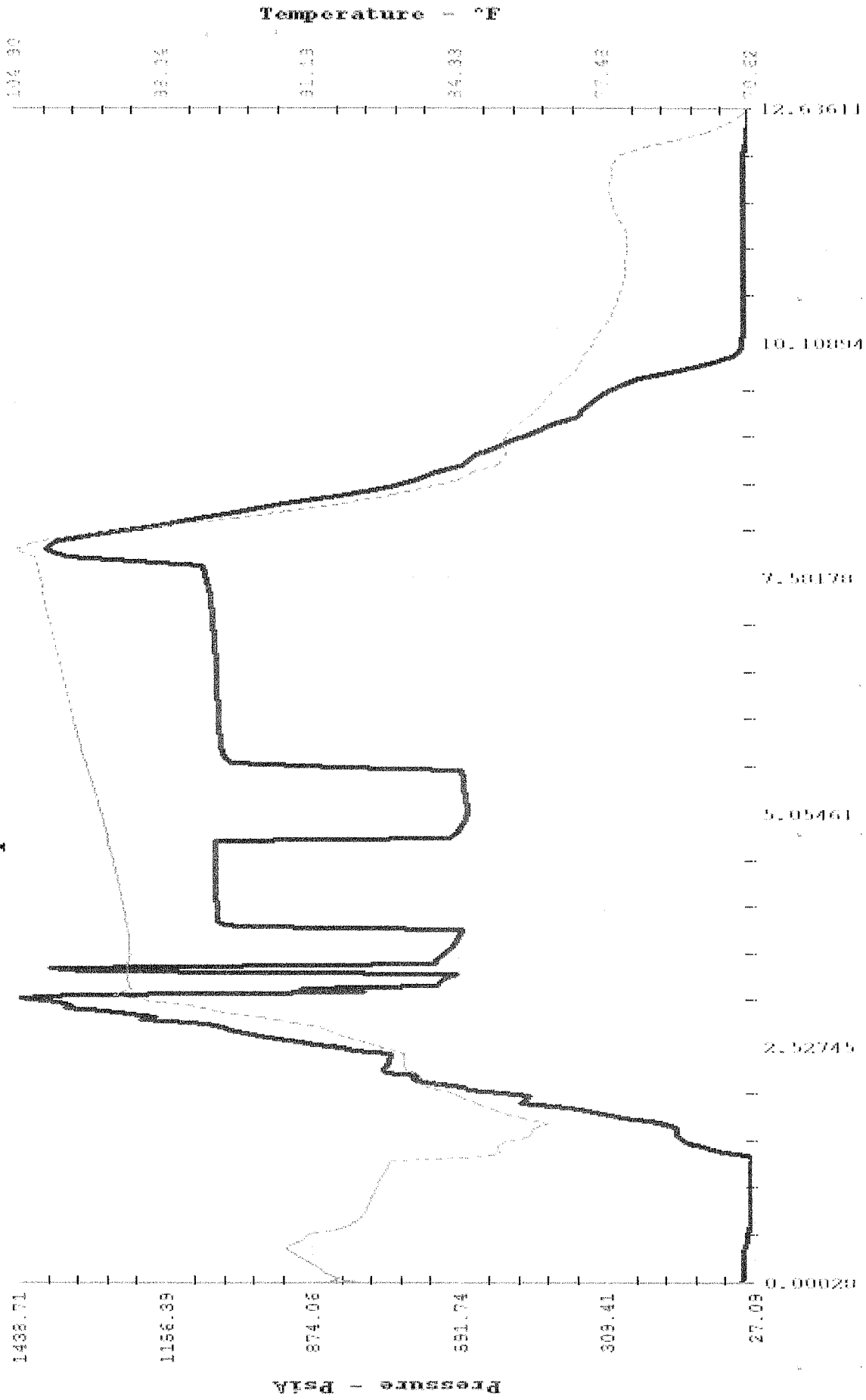
**Initial Flow**

Comments	Time (hh:mm:ss)	Period dt (min)	Inches H2O Orifice Tester	PSI on Orifice Tester	PSI on Pitot Tube	Choke Size (in)	Gas Rate (MCF/Day)

**Final Flow**

Comments	Time (hh:mm:ss)	Period dt (min)	Inches H2O Orifice Tester	PSI on Orifice Tester	PSI on Pitot Tube	Choke Size (in)	Gas Rate (MCF/Day)
	10 MIN		27			1/8	2.790
	20 MIN			4		1/4	5.640
	30 MIN			11		1/4	10.000
	40 MIN			13		1/4	11.000
	45 MIN			15		1/4	12.100

*Temperature / Pressure Data*



Elapsed Time - Hrs

SAMUEL GARY    ZINK 1-34    9/25/06    34-18S-10W

**Superior Testers Enterprises, Inc.** *Arrived 11:30 PM*  
 R.R. 3, Box 295B, Great Bend, Kansas, 67530  
 (316) 792-6902 *K131797*

Date 9/27/06 Location 34485-10w Elevation 1727 County Rice  
 Company Samuel Galy et. and ass. inc. Number of Copies 5  
 Charts Mailed to 1670 Broadway Ste 3300 Denver, CO 80202  
 Drilling Contractor Summit Drilling Rig #1  
 Length Drill Pipe 2787 I.D. Drill Pipe 9.0 Tool Joint Size 4"  
 Length Weight Pipe \_\_\_\_\_ I.D. Weight Pipe \_\_\_\_\_ Tool Joint Size \_\_\_\_\_  
 Length Drill Collars 354 I.D. Drill Collars 2.25 Tool Joint Size 4.5  
 Top Packer Depth 3091 Bottom Packer Depth 3096 Number of Packers 2 Packer Size 6.75  
 TESTED FROM 3096 TO 3129 ANCHOR LENGTH 33 TOTAL DEPTH 3129 Hole Size 07 1/4  
 LEASE & WELL NO. ZINK 1-34 FORMATION TESTED Lansing TEST NO. 2  
 Mud Weight 9.15 Viscosity 50 Water Loss 0.0 Chlorides - Pits 1400 D.S.T. 18,000  
 Maximum Temp. 109 °F Initial Hydrostatic Pressure (A) 1555 P.S.I. Final Hydrostatic Pressure (H) 1460 P.S.I.

Tool Open I.F.P. from 2:20A m to 2:40A m 20 min  
 Tool Closed I.C.I.P. from 2:40A m to 3:40A m 60 min  
 Tool Open F.F.P. from 3:40A m to 4:25A m 45 min  
 Tool Closed F.C.I.P. from 4:25A m to 6:40A m 135 min

from [B]	<u>71</u>	P.S.I. to [C]	<u>90</u>	P.S.I.
[D]	<u>831</u>			P.S.I.
from [E]	<u>93</u>	P.S.I. to [F]	<u>140</u>	P.S.I.
[G]	<u>881</u>			P.S.I.

Initial Blow weak surface blow built to 8" NO blowback  
 Final Blow DAB 5 min NO blowback

Total Feet Recovered 90' Fluid 571' Oil P Gravity of Oil \_\_\_\_\_ Corrected \_\_\_\_\_  
30 Feet of gassy oil cut mud 10 % Gas 17 % Oil 75 % Mud \_\_\_\_\_ % Water  
30 Feet of mud and gas cut oil 9 % Gas 55 % Oil 20 % Mud 20 % Water  
30 Feet of oil and water cut mud \_\_\_\_\_ % Gas 30 % Oil 50 % Mud 20 % Water  
 \_\_\_\_\_ Feet of \_\_\_\_\_ .0266 % Gas .147 % Oil .213 % Mud .051 % Water  
 \_\_\_\_\_ Feet of chlorides 18,000 \_\_\_\_\_ % Gas 66L % Oil 66L % Mud ML % Water  
 \_\_\_\_\_ Feet of \_\_\_\_\_ % Gas \_\_\_\_\_ % Oil \_\_\_\_\_ % Mud \_\_\_\_\_ % Water  
 \_\_\_\_\_ Feet of \_\_\_\_\_ % Gas \_\_\_\_\_ % Oil \_\_\_\_\_ % Mud \_\_\_\_\_ % Water  
 \_\_\_\_\_ Feet of \_\_\_\_\_ % Gas \_\_\_\_\_ % Oil \_\_\_\_\_ % Mud \_\_\_\_\_ % Water  
 \_\_\_\_\_ Feet of \_\_\_\_\_ % Gas \_\_\_\_\_ % Oil \_\_\_\_\_ % Mud \_\_\_\_\_ % Water

Remarks \_\_\_\_\_

Extra Equipment - Jars  Safety Joint  Extra Packer \_\_\_\_\_ Straddle \_\_\_\_\_ Hook Wall \_\_\_\_\_  
 Top Recorder No. 4005 Clock No. Elec Depth 3125 Cir. Sub \_\_\_\_\_ Sampler \_\_\_\_\_  
 Bottom Recorder No. 7875 Clock No. 3435 Depth 3126 Insurance \_\_\_\_\_

Price of Job \_\_\_\_\_  
 Tool Operator [Signature]  
 Approved By \_\_\_\_\_  
 No. 14194 TOM @ SDA SD.COM

Superior Testers Enterprises, inc. shall not be liable for damage of any kind to the property or personnel of the one for whom a test is made, or for any loss suffered or sustained, directly or indirectly, through the use of its equipment, or its statements or opinion concerning the results of any test. Tools lost or damaged in the hole shall be paid for at cost by the party for whom the test is made.

# SUPERIOR TESTERS ENTERPRISES L.L.C.

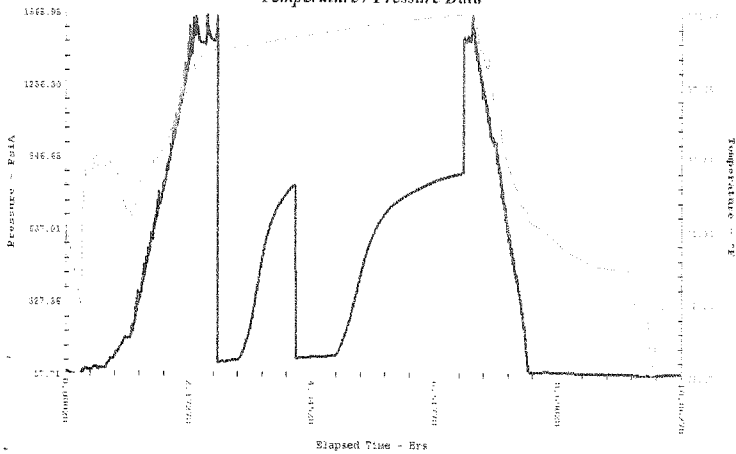
(800)792-6902

## DRILL STEM TEST REPORT

GREAT BEND, KANSAS 67530

Company: SAMUEL GARY JR. AND ASSOCIATES  
 TWP. 18S RGE. 10W  
 Lease & Well No. ZINK 1-34 Test #: 2 Date: 9/27/06 SEC. 34

Temperature / Pressure Data



- |   |                              |      |
|---|------------------------------|------|
| 1 | Initial Hydrostatic Pressure | 1555 |
| 2 | Initial Flow Pressure        | 71   |
| 3 | Final Initial Flow Pressure  | 90   |
| 4 | Initial Shut-In Pressure     | 831  |
| 5 | Initial Final Flow Pressure  | 93   |
| 6 | Final Flow Pressure          | 140  |
| 7 | Final Shut-In Pressure       | 881  |
| 8 | Final Hydrostatic Pressure   | 1460 |

Maximum Temperature 109

**GENERAL INFORMATION**

COMPANY NAME ..... SAMEUL GARY JR. AND ASSOCIATES

TEST DATE ..... 9/27/06

LEASE AND WELL NUMBER ..... ZINK 1-34

SECTION-TOWN-RANGE ..... 34-18S-10W

FORMATION TESTED ..... LANSING J

STATE ..... KS

DRILL STEM TEST NUMBER ..... 2

COUNTY ..... RICE

REPORT NUMBER ..... 14194

ELEVATION GROUND LEVEL ..... 1727

ELEVATION KELLY BUSHINGS ..... 1737

COMPANY REPRESENTATIVE ..... TOM FERTAL

TESTING ENGINEER ..... KEVIN WEBSTER

**TOOL SETTING INFORMATION**

TEST INTERVAL (From) ..... 3096

TOP PACKER DEPTH ..... 3091

TEST INTERVAL (to) ..... 3129

BOTTOM PACKER DEPTH ..... 3096

ANCHOR LENGTH ..... 33

NUMBER OF PACKERS ..... 2

TOTAL DEPTH (ft) ..... 3129

PACKER SIZE ..... 6 3/4

HOLE SIZE ..... 7 7/8

**FLOW TIMES**

TOOL OPEN (from) ..... 2:20

TOOL OPEN (from) ..... 3:40

TOOL OPEN (to) ..... 2:40

FINAL OPEN TOOL OPEN (to) ..... 4:25

DURATION (min.) ..... 20

DURATION (min.) ..... 45

TOOL CLOSED (from) ..... 2:40

TOOL CLOSED (from) ..... 4:25

INITIAL SHUT-IN TOOL CLOSED (to) ..... 3:40

FINAL SHUT-IN TOOL CLOSED (to) ..... 6:40

DURATION (min.) ..... 60

DURATION (min.) ..... 135

**INITIAL FLOW**

**WEAK BUILDING BLOW BUILT TO 8 INCHES INTO THE WATER**

**FINAL FLOW**

**FAIR BLOW BUILT TO THE BOTTOM OF A 5 GALLON BUCKET IN 5 MINUTES**

Feet of Recovery	RESISTIVITY	AT	DEGREES	CHLORIDES			
	RECOVERY DESCRIPTION			% GAS	% OIL	% MUD	% WATER
1) 30	OIL AND GAS CUT MUD			10	15	75	
2) 30	HEAVY OIL CUT WATERY MUD			5	55	20	20
3) 30	OIL CUT MUDDY WATER				30	50	20
4)				0.020	0.147	0.213	0.058
5)				bbls.	bbls.	bbls.	bbls.

**SUPERIOR TESTERS ENTERPRISES L.L.C.**

**DRILL STEM TEST REPORT**

**GREAT BEND ,KANSAS 67530 (800)792-6902**

**GENERAL INFORMATION**

COMPANY NAME .....	<b>SAMEUL GARY JR.AND ASSOCIATES</b>	LEASE AND WELL NUMBER .....	<b>ZINK 1-34</b>
TEST DATE .....	<b>9/27/06</b>	FORMATION TESTED .....	<b>LANSING J</b>
SECTION-TOWN-RANGE .....	<b>34-18S-10W</b>	DRILL STEM TEST NUMBER .....	<b>2</b>
STATE .....	<b>KS</b>	REPORT NUMBER .....	<b>14194</b>
COUNTY .....	<b>RICE</b>	ELEVATION KELLY BUSHINGS .....	<b>1737</b>
ELEVATION GROUND LEVEL .....	<b>1727</b>	TESTING ENGINEER .....	<b>KEVIN WEBSTER</b>
COMPANY REPRESENTATIVE .....	<b>TOM FERTAL</b>		

**EXTRA EQUIPMENT**

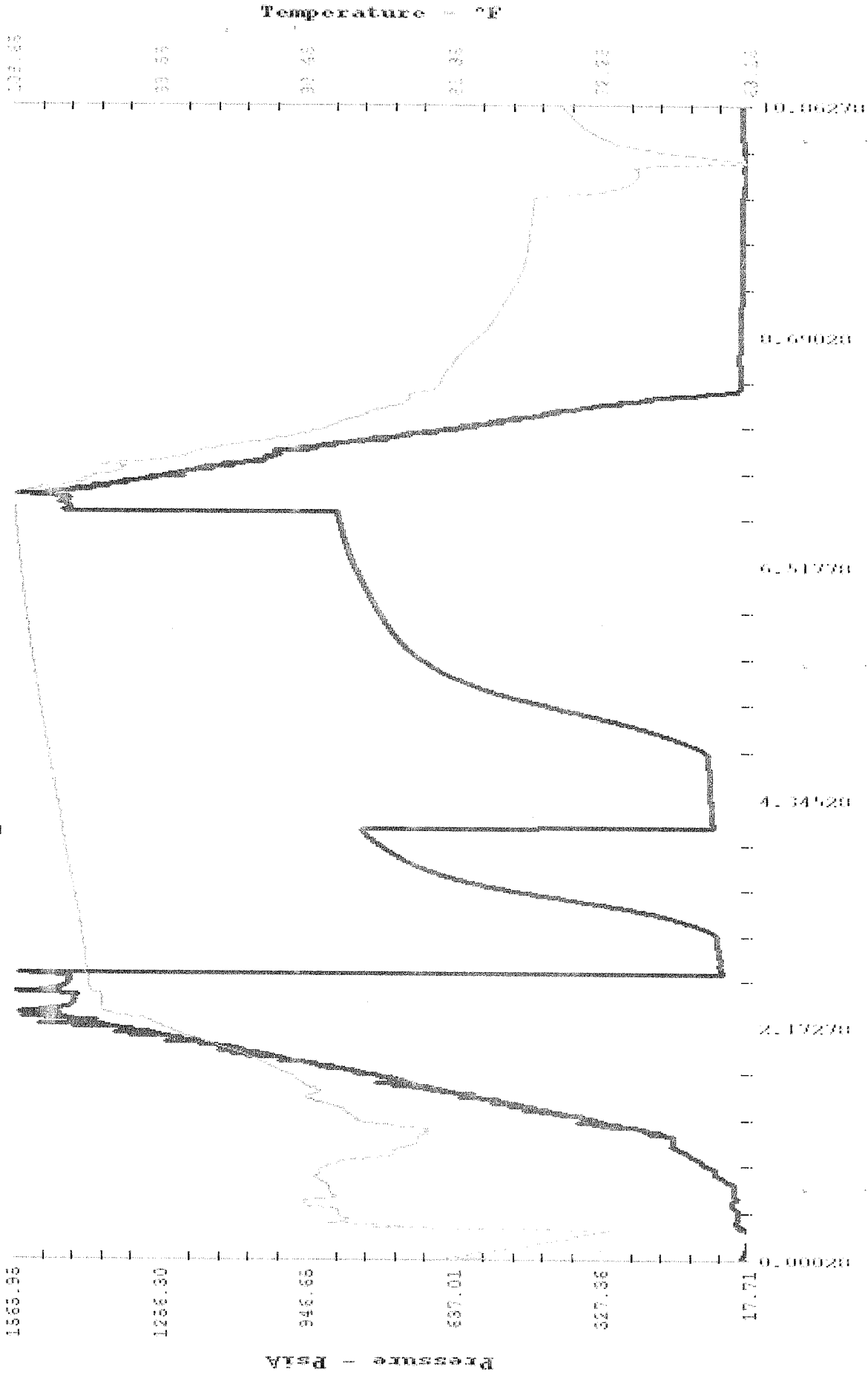
JARS .....	<b>YES</b>	EXTRA PACKER (3RD) .....	<b>NO</b>
SAFETY JOINT .....	<b>YES</b>	EXTRA PACKER (4TH) .....	<b>NO</b>
ELECTRONIC RECORDER .....	<b>YES</b>	STRADDLE .....	<b>NO</b>
CIRCULATING SUB .....	<b>NO</b>	HOOK WALL .....	<b>NO</b>
	<b>MILES ROUND TRIP FROM</b>	SAMPLER .....	<b>NO</b>
	<b>GREAT BEND</b>		
TOP RECORDER DEPTH .....	<b>3125</b>	BOTTOM RECORDER DEPTH .....	<b>3126</b>
RECORDER NUMBER .....	<b>4005</b>	RECORDER NUMBER .....	<b>7875</b>

**WELL INFORMATION**

DRILLING CONTRACTOR .....	<b>SUMMIT DRILLING</b>	DRILL COLLAR LENGTH .....	<b>354</b>
DRILL PIPE LENGTH .....	<b>2787</b>	DRILL COLLAR I.D. ....	<b>2.25</b>
DRILL PIPE I.D. ....	<b>3.8</b>	TOOL JOINT SIZE .....	<b>4 1/2 X.H.</b>
TOOL JOINT SIZE .....	<b>4 1/2 X.H.</b>		
WEIGHT PIPE LENGTH .....	<b>0</b>	MUD WEIGHT #/GAL .....	<b>9.15</b>
WEIGHT PIPE I.D. ....	<b>2.25</b>	VISCOSITY .....	<b>59</b>
TOOL JOINT SIZE .....	<b>4 1/2 X.H.</b>	WATER LOSS .....	<b>8</b>
		CHLORIDES-PITS .....	<b>7400</b>
		CHLORIDES-DST .....	

**COMMENTS**

# Temperature / Pressure Data



Elapsed Time - Hrs

# SUPERIOR TESTERS ENTERPRISES L.L.C.

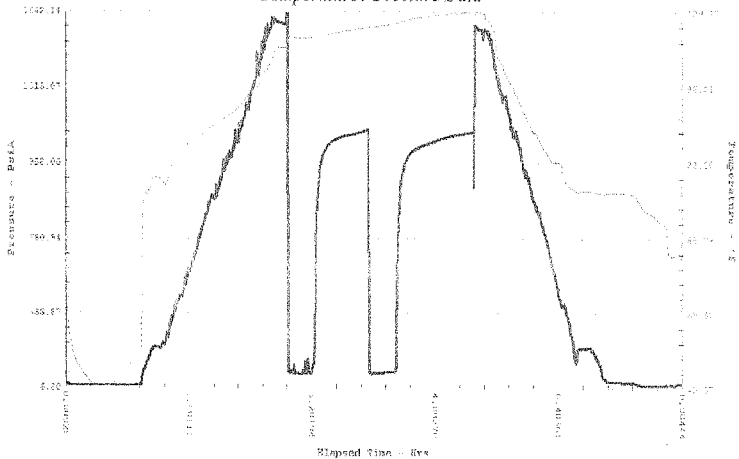
1(800)792-6902

## DRILL STEM TEST REPORT

GREAT BEND, KANSAS 67530

Company: **SAMUEL GARY JR. AND ASSOCIATES** Lease & Well No. **ZINK 1-34** Test #: **3** Date: **9/28/06**  
**SEC. 34 TWP. 18S RGE. 10W**

Temperature / Pressure Data



- 1 Initial Hydrostatic Pressure 1642
- 2 Initial Flow Pressure 79
- 3 Final Initial Flow Pressure 111
- 4 Initial Shut-In Pressure 1132
- 5 Initial Final Flow Pressure 74
- 6 Final Flow Pressure 82
- 7 Final Shut-In Pressure 1119
- 8 Final Hydrostatic Pressure 1584

Maximum Temperature 108

**GENERAL INFORMATION**

COMPANY NAME .... <b>SAMUEL GARY JR. AND ASSOCIATES</b>	LEASE AND WELL NUMBER ..... <b>ZINK 1-34</b>
TEST DATE .... <b>9/28/06</b>	FORMATION TESTED ..... <b>ARBUCKLE</b>
SECTION-TOWN-RANGE .... <b>34-18S-10W</b>	DRILL STEM TEST NUMBER ..... <b>3</b>
STATE .... <b>KANSAS</b>	REPORT NUMBER ..... <b>14195</b>
COUNTY .... <b>RICE</b>	ELEVATION KELLY BUSHINGS ..... <b>1737</b>
ELEVATION GROUND LEVEL ..... <b>1727</b>	TESTING ENGINEER ..... <b>KEVIN WEBSTER</b>
COMPANY REPRESENTATIVE .... <b>TOM FERTAL</b>	

**TOOL SETTING INFORMATION**

TEST INTERVAL (From) .... <b>3264</b>	TOP PACKER DEPTH ..... <b>3259</b>
TEST INTERVAL (to) .... <b>3277</b>	BOTTOM PACKER DEPTH ..... <b>3264</b>
ANCHOR LENGTH .... <b>13</b>	NUMBER OF PACKERS ..... <b>2</b>
TOTAL DEPTH (ft) .... <b>3277</b>	PACKER SIZE ..... <b>6 3/4</b>
	HOLE SIZE ..... <b>7 7/8</b>

**FLOW TIMES**

TOOL OPEN (from) .... <b>11:10</b>	TOOL OPEN (from) ..... <b>12:10</b>	
INITIAL OPEN TOOL OPEN (to) .... <b>11:25</b>	FINAL OPEN TOOL OPEN (to) ..... <b>12:30</b>	
DURATION (min.) .... <b>15</b>	DURATION (min.) ..... <b>20</b>	
TOOL CLOSED (from) .... <b>11:25</b>	TOOL CLOSED (from) ..... <b>12:30</b>	
INITIAL SHUT-IN TOOL CLOSED (to) .... <b>12:10</b>	FINAL SHUT-IN TOOL CLOSED (to) ..... <b>1:30</b>	
DURATION (min.) .... <b>45</b>	DURATION (min.) ..... <b>60</b>	

INITIAL FLOW      **WEAK SURFACE BLOW**      **NO BLOW BACK ON SHUT IN**

FINAL FLOW      **WEAK SURFACE BLOW DIED AS SOON AS OPEN**      **NO BLOW BACK ON SHUT IN**

Feet of Recovery	RESISTIVITY	AT	DEGREES	CHLORIDES			
				% GAS	% OIL	% MUD	% WATER
1) 10	muddy oil				75	25	
2) 30	oil cut mud				20	80	
3)				0.066	0.130		
4)				bbis	bbis		
5)							

**SUPERIOR TESTERS ENTERPRISES L.L.C.**  
**DRILL STEM TEST REPORT**  
**GREAT BEND, KANSAS 67530 (800)792-6902**

**GENERAL INFORMATION**

COMPANY NAME .....	<b>SAMUEL GARY JR. AND ASSOCIATES</b>	LEASE AND WELL NUMBER .....	<b>ZINK 1-34</b>
TEST DATE .....	<b>9/28/06</b>	FORMATION TESTED .....	<b>ARBUCKLE</b>
SECTION-TOWN-RANGE .....	<b>34-18S-10W</b>	DRILL STEM TEST NUMBER .....	<b>3</b>
STATE .....	<b>KANSAS</b>	REPORT NUMBER .....	<b>14195</b>
COUNTY .....	<b>RICE</b>	ELEVATION KELLY BUSHINGS .....	<b>1737</b>
ELEVATION GROUND LEVEL .....	<b>1727</b>	TESTING ENGINEER .....	<b>KEVIN WEBSTER</b>
COMPANY REPRESENTATIVE .....	<b>TOM FERTAL</b>		

**EXTRA EQUIPMENT**

JARS .....	<b>YES</b>	EXTRA PACKER (3RD) .....	<b>NO</b>
SAFETY JOINT .....	<b>YES</b>	EXTRA PACKER (4TH) .....	<b>NO</b>
ELECTRONIC RECORDER .....	<b>YES</b>	STRADDLE .....	<b>NO</b>
CIRCULATING SUB .....	<b>NO</b>	HOOK WALL .....	<b>NO</b>
	<b>70 MILES ROUND TRIP FROM</b>	SAMPLER .....	<b>NO</b>
	<b>GREAT BEND</b>		
TOP RECORDER DEPTH .....	<b>3273</b>	BOTTOM RECORDER DEPTH .....	<b>3274</b>
RECORDER NUMBER .....	<b>4005</b>	RECORDER NUMBER .....	<b>7875</b>

**WELL INFORMATION**

DRILLING CONTRACTOR .....	<b>SUMMIT RIG#1</b>	DRILL COLLAR LENGTH .....	<b>354</b>
DRILL PIPE LENGTH .....	<b>2923</b>	DRILL COLLAR I.D. ....	<b>2.25</b>
DRILL PIPE I.D. ....	<b>3.8</b>	TOOL JOINT SIZE .....	<b>4 1/2 X.H.</b>
TOOL JOINT SIZE .....	<b>4 1/2 X.H.</b>		
WEIGHT PIPE LENGTH .....	<b>0</b>	MUD WEIGHT #/GAL .....	<b>9.4</b>
WEIGHT PIPE I.D. ....	<b>2.25</b>	VISCOSITY .....	<b>65</b>
TOOL JOINT SIZE .....	<b>4 1/2 X.H.</b>	WATER LOSS .....	<b>9.6</b>
		CHLORIDES-PITS .....	<b>8500</b>
		CHLORIDES-DST .....	

**COMMENTS**

# Temperature / Pressure Data



Elapsed Time - Hrs

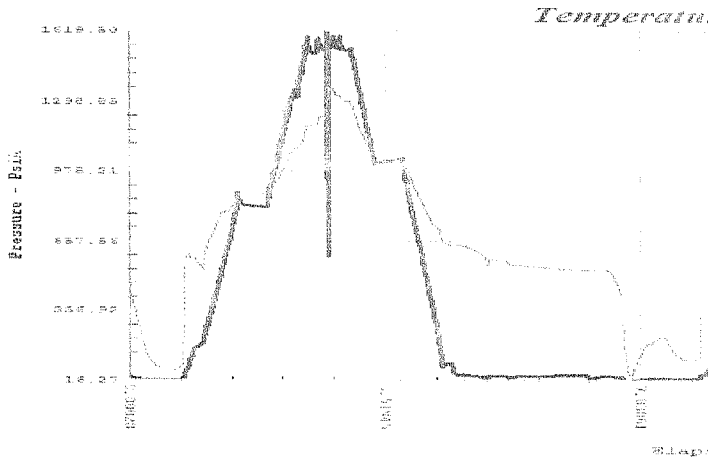
# SUPERIOR TESTERS ENTERPRISES L.L.C.

(800)792-6902

## DRILL STEM TEST REPORT

GREAT BEND, KANSAS 67530

Company: SAMUEL GARY JR. AND ASSOCIATES  
 SEC. 34 TWP. 18S RGE. 10W  
 Lease & Well No. ZINK 1-34 Test #: 4 Date: 9/29/06



- 1 Initial Hydrostatic Pressure **MISS**
- 2 Initial Flow Pressure **RUN**
- 3 Final Initial Flow Pressure **PACKER**
- 4 Initial Shut-In Pressure **FAILURE**
- 5 Initial Final Flow Pressure
- 6 Final Flow Pressure
- 7 Final Shut-In Pressure
- 8 Final Hydrostatic Pressure

Maximum Temperature

### GENERAL INFORMATION

COMPANY NAME .... **SAMUEL GARY JR. AND ASSOCIATES**

TEST DATE .... **9/29/06**

LEASE AND WELL NUMBER ..... **ZINK 1-34**

SECTION-TOWN-RANGE .... **34-18S-10W**

FORMATION TESTED ..... **ARBUCKLE**

STATE .... **KANSAS**

DRILL STEM TEST NUMBER ..... **4**

COUNTY .... **RICE**

REPORT NUMBER ..... **14196**

ELEVATION GROUND LEVEL .... **1727**

ELEVATION KELLY BUSHINGS ..... **1737**

COMPANY REPRESENTATIVE .... **TOM FERTAL**

TESTING ENGINEER ..... **KEVIN WEBSTER**

### TOOL SETTING INFORMATION

TEST INTERVAL (From) .... **3270**

TOP PACKER DEPTH ..... **3265**

TEST INTERVAL (to) .... **3294**

BOTTOM PACKER DEPTH ..... **3270**

ANCHOR LENGTH .... **24**

NUMBER OF PACKERS ..... **2**

TOTAL DEPTH (ft) .... **3294**

PACKER SIZE ..... **6 3/4**

HOLE SIZE ..... **7 7/8**

### FLOW TIMES

TOOL OPEN (from) .....

TOOL OPEN (from) .....

INITIAL OPEN TOOL OPEN (to) .....

FINAL OPEN

TOOL OPEN (to) .....

DURATION (min.) .....

DURATION (min.) .....

TOOL CLOSED (from) .....

TOOL CLOSED (from) .....

INITIAL SHUT-IN TOOL CLOSED (to) .....

FINAL SHUT-IN

TOOL CLOSED (to) .....

DURATION (min.) .....

DURATION (min.) .....

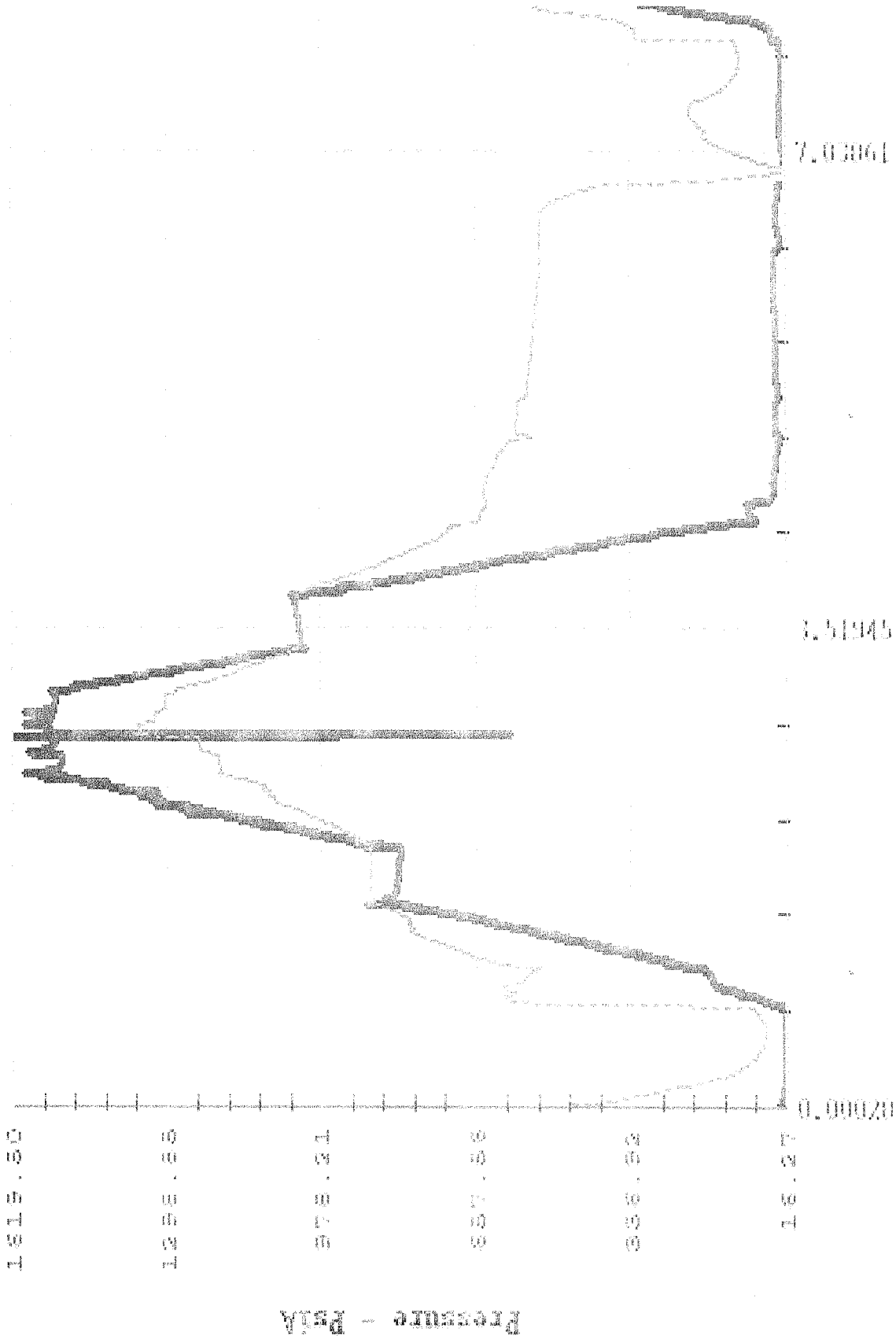
INITIAL FLOW **MISRUN**

### FINAL FLOW

Feet of Recovery	RESISTIVITY	AT	DEGREES	CHLORIDES			
	RECOVERY DESCRIPTION			% GAS	% OIL	% MUD	% WATER
1)							
2)							
3)							
4)							
5)							



# Temperature



ELIQUIS

SAMUEL GARY JR. AND ASSOCIATES      ZINK 1-34      9/29/06      34-18S-10W      DST #4 ARBUCKLE

# SUPERIOR TESTERS ENTERPRISES L.L.C.

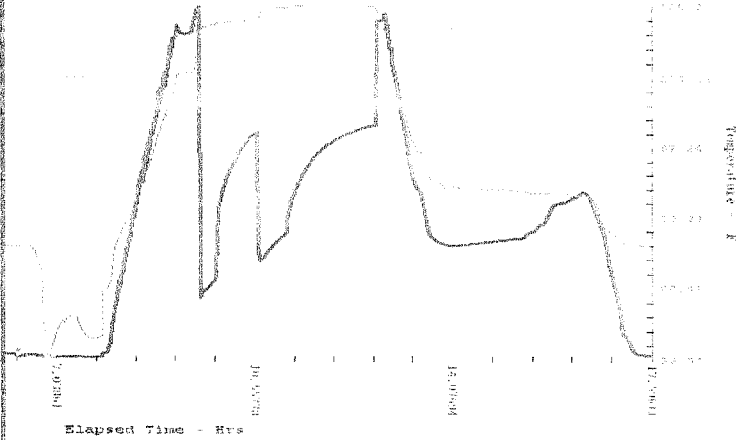
## DRILL STEM TEST REPORT

(800)792-6902

GREAT BEND, KANSAS 67530

Company: SAMUEL GARY JR. AND ASSOCIATES  
 SEC. 34 TWP. 18S RGE. 10W  
 Lease & Well No. ZINK 1-34 Test #: 5 Date: 9/29/06

### Temperature / Pressure Data



1	Initial Hydrostatic Pressure	1619
2	Initial Flow Pressure	290
3	Final Initial Flow Pressure	380
4	Initial Shut-In Pressure	1048
5	Initial Final Flow Pressure	514
6	Final Flow Pressure	586
7	Final Shut-In Pressure	1080
8	Final Hydrostatic Pressure	1555

Maximum Temperature 115

### GENERAL INFORMATION

COMPANY NAME	..... SAMUEL GARY JR. AND ASSOCIATES	LEASE AND WELL NUMBER	..... ZINK 1-34
TEST DATE	..... 9/29/06	FORMATION TESTED	..... ARBUCKLE
SECTION-TOWN-RANGE	..... 34-18S-10W	DRILL STEM TEST NUMBER	..... 5
STATE	..... KANSAS	REPORT NUMBER	..... 14197
COUNTY	..... RICE	ELEVATION KELLY BUSHINGS	..... 1737
ELEVATION GROUND LEVEL	..... 1727	TESTING ENGINEER	..... KEVIN WEBSTER
COMPANY REPRESENTATIVE	..... TOM FERTAL		

### TOOL SETTING INFORMATION

TEST INTERVAL (From)	..... 3285	TOP PACKER DEPTH	..... 3280
TEST INTERVAL (to)	..... 3294	BOTTOM PACKER DEPTH	..... 3285
ANCHOR LENGTH	..... 9	NUMBER OF PACKERS	..... 2
TOTAL DEPTH (ft)	..... 3294	PACKER SIZE	..... 6 3/4
		HOLE SIZE	..... 7 7/8

### FLOW TIMES

TOOL OPEN (from)	..... 11:50	TOOL OPEN (from)	..... 12:50
INITIAL OPEN TOOL OPEN (to)	..... 12:05	FINAL OPEN TOOL OPEN (to)	..... 1:20
DURATION (min.)	..... 15	DURATION (min.)	..... 30
TOOL CLOSED (from)	..... 12:05	TOOL CLOSED (from)	..... 1:20
INITIAL SHUT-IN TOOL CLOSED (to)	..... 12:50	FINAL SHUT-IN TOOL CLOSED (to)	..... 2:50
DURATION (min.)	..... 45	DURATION (min.)	..... 90

INITIAL FLOW BOTTOM OF THE BUCKET IN 1 MINUTE NO BLOW BACK

FINAL FLOW BOTTOM OF THE BUCKET IN 1 MINUTE

Feet of Recovery	RESISTIVITY	AT	DEGREES	CHLORIDES			
	RECOVERY DESCRIPTION			% GAS	% OIL	% MUD	% WATER
1) 60	GASSY MUD CUT OIL			15	50	35	
2) 1149	OIL				100		
3)							
4)				0.0441	8.0868	0.1029	
5)				bbls	bbls	bbls	

**SUPERIOR TESTERS ENTERPRISES L.L.C.**  
**DRILL STEM TEST REPORT**  
**GREAT BEND, KANSAS 67550 (800)792-6902**

**GENERAL INFORMATION**

COMPANY NAME .....	<b>SAMUEL GARY JR. AND ASSOCIATES</b>		
TEST DATE .....	<b>9/29/06</b>	LEASE AND WELL NUMBER .....	<b>ZINK 1-34</b>
SECTION-TOWN-RANGE .....	<b>34-18S-10W</b>	FORMATION TESTED .....	<b>ARBUCKLE</b>
STATE .....	<b>KANSAS</b>	DRILL STEM TEST NUMBER .....	<b>5</b>
COUNTY .....	<b>RICE</b>	REPORT NUMBER .....	<b>14197</b>
ELEVATION GROUND LEVEL .....	<b>1727</b>	ELEVATION KELLY BUSHINGS .....	<b>1737</b>
COMPANY REPRESENTATIVE .....	<b>TOM FERTAL</b>	TESTING ENGINEER .....	<b>KEVIN WEBSTER</b>

**EXTRA EQUIPMENT**

JARS .....	<b>YES</b>	EXTRA PACKER (3RD) .....	<b>NO</b>
SAFETY JOINT .....	<b>YES</b>	EXTRA PACKER (4TH) .....	<b>NO</b>
ELECTRONIC RECORDER .....	<b>YES</b>	STRADDLE .....	<b>NO</b>
CIRCULATING SUB .....	<b>NO</b>	HOOK WALL .....	<b>NO</b>
	<b>70 MILES ROUND TRIP FROM</b>	SAMPLER .....	<b>NO</b>
	<b>GREAT BEND</b>		
TOP RECORDER DEPTH .....	<b>3290</b>	BOTTOM RECORDER DEPTH .....	<b>3291</b>
RECORDER NUMBER .....	<b>4005</b>	RECORDER NUMBER .....	<b>7875</b>

**WELL INFORMATION**

DRILLING CONTRACTOR .....	<b>SUMMIT RIG 1</b>		
DRILL PIPE LENGTH .....	<b>2940</b>	DRILL COLLAR LENGTH .....	<b>354</b>
DRILL PIPE I.D. ....	<b>3.8</b>	DRILL COLLAR I.D. ....	<b>2.25</b>
TOOL JOINT SIZE .....	<b>4 1/2 X.H.</b>	TOOL JOINT SIZE .....	<b>4 1/2 X.H.</b>
WEIGHT PIPE LENGTH .....	<b>0</b>	MUD WEIGHT #/GAL .....	<b>9.4</b>
WEIGHT PIPE I.D. ....	<b>2.25</b>	VISCOSITY .....	<b>65</b>
TOOL JOINT SIZE .....	<b>4 1/2 X.H.</b>	WATER LOSS .....	<b>9.6</b>
		CHLORIDES-PITS .....	<b>8500</b>
		CHLORIDES-DST .....	

**COMMENTS**